

5.25in Dual 2.5/3.5in HDD/SSD SAS SATA Trayless Mobile Rack

HSB2535SATBK



*actual product may vary from photos

DE: Bedienungsanleitung - de.startech.com

FR: Guide de l'utilisateur - fr.startech.com

ES: Guía del usuario - es.startech.com

IT: Guida per l'uso - it.startech.com

NL: Gebruiksaanwijzing - nl.startech.com

PT: Guia do usuário - pt.startech.com

For the most up-to-date information, please visit: www.startech.com

FCC Compliance Statement

This equipment has been tested and found to comply with the limits for a Class B digital device, pursuant to part 15 of the FCC Rules. These limits are designed to provide reasonable protection against harmful interference in a residential installation. This equipment generates, uses and can radiate radio frequency energy and, if not installed and used in accordance with the instructions, may cause harmful interference to radio communications. However, there is no guarantee that interference will not occur in a particular installation. If this equipment does cause harmful interference to radio or television reception, which can be determined by turning the equipment off and on, the user is encouraged to try to correct the interference by one or more of the following measures:

- Reorient or relocate the receiving antenna.
- Increase the separation between the equipment and receiver.
- Connect the equipment into an outlet on a circuit different from that to which the receiver is connected.
- Consult the dealer or an experienced radio/TV technician for help.

Use of Trademarks, Registered Trademarks, and other Protected Names and Symbols

This manual may make reference to trademarks, registered trademarks, and other protected names and/or symbols of third-party companies not related in any way to StarTech.com. Where they occur these references are for illustrative purposes only and do not represent an endorsement of a product or service by StarTech.com, or an endorsement of the product(s) to which this manual applies by the third-party company in question. Regardless of any direct acknowledgement elsewhere in the body of this document, StarTech.com hereby acknowledges that all trademarks, registered trademarks, service marks, and other protected names and/or symbols contained in this manual and related documents are the property of their respective holders.

Table of Contents

Product Diagram	1
Front View	1
Rear View	1
Introduction	2
Packaging Contents	2
System Requirements.....	2
Hardware Installation	3
2.5/3.5in Hard Drive Installation	4
2.5/3.5in Hard Drive Removal	5
How to Use	6
Connecting the Hard Drive.....	6
LED Indicator	6
Initializing the Hard Drive.....	6
Technical Support	8
Warranty Information.....	8

Product Diagram

Front View



1. 2.5" Drive bay
2. 2.5" Drive bay key hole
3. 3.5" Drive bay
4. 3.5" Drive bay key hole
5. 2.5/3.5in LED indicators

Rear View



1. 2.5" Drive SATA port
2. 3.5" Drive SATA/SAS Port
3. LP4 Power Connector

Introduction

Packaging Contents

- 1 x 2.5/3.5in SATA HDD Backplane
- 2 x 18" SATA Cable
- 1 x Molex LP4 to SATA Power Adapter Cable
- 2 x Bay Key
- 1 x Installation Screw kit
- 1 x Instruction Manual

System Requirements

- 1 x Computer System with SATA connectivity and an available 5.25" bay
- 1 x Available SATA or LP4 Power Connection
- 1 x 2.5" SATA Hard Drive **and/or** 1 x 3.5" SATA/SAS Hard Drive

WARNING! Hard drives and storage docks require careful handling, especially when being transported. If you are not careful with your hard disk, lost data may result. Always handle your hard drive and storage device with caution. Be sure that you are properly grounded by wearing an anti-static strap when handling computer components or discharge yourself of any static electricity build-up by touching a large grounded metal surface (such as the computer case) for several seconds.

Hardware Installation

1. Ensure your computer system is powered down, and the power cable has been disconnected from the Power Supply.
2. Open your computer case (refer to the computer user manual for details), and place the 2.5/3.5in SATA HDD Backplane into an available 5.25" slot, lining up the side installation holes on the HSB2535SATBK (pictured below), with installation holes on the 5.25" slot inside the computer.



3. Hold the HSB2535SATBK into place, and fix 4 of the included screws through the installation holes on the 5.25" slot, into the side installation holes on the HSB2535SATBK.
4. Connect one of the included "18in SATA cables" from an available SATA host port on your motherboard to the "2.5" Drive SATA port" on the back of the HSB2535SATBK.
5. Connect one of the included "18in SATA cables" from an available SATA host port on your motherboard to the "3.5" Drive SATA port" on the back of the HSB2535SATBK.
6. Connect a Molex LP4 Power header from your power supply to the "LP4 Power Connector" on the back of the HSB2535SATBK. If you do not have an LP4 connector available, use the included "Molex LP4 to SATA Power Adapter Cable" with an available SATA Power Header from your power supply.

2.5/3.5in Hard Drive Installation

1. Insert either of the included bay keys into the "2.5in/3.5in Drive bay key holes depending on which type of drive you intend to install. And Turn the key clockwise into the unlock position.



2. Pull the drive door handle to open the drive bay.



3. Insert your desired drive.



4. Close the drive door.



2.5/3.5in Hard Drive Removal

1. Insert either of the included bay keys into the "2.5in/3.5in Drive bay key holes depending on which type of drive you intend to install. And Turn the key clockwise into the unlock position.



2. Pull the drive door handle to open the drive bay.



3. Remove your drive.



4. Close the drive door.

Note: It is important to eject or unmount the hard drive from your computer system before physically removing the drive. See How to Use - Disconnecting the Hard Drive section for instructions.

How to Use

Connecting the Hard Drive

Once the drive has been installed in the drive bay, the drivers will install automatically, and the inserted drive will be accessible as though it were installed within the system.

Prior to using the drive, it will need to be formatted according to your operating system requirements.

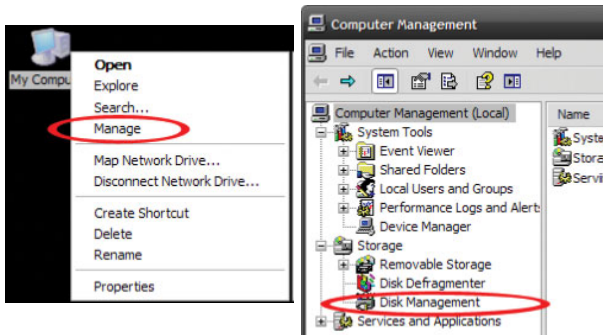
Refer to Initializing the Hard Drive

LED Indicator

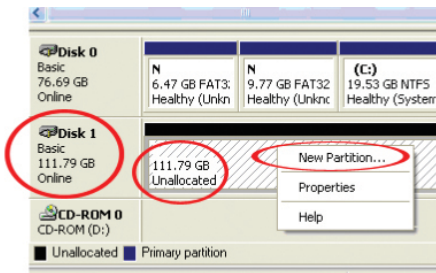
The HSB2535SATBK offers 2.5/3.5in LED indicators, to enable you to monitor drive activity. The LED will flash while the hard drive is being accessed. Do not remove the enclosure from the host computer while the LED is flashing, as it could damage the drive or the enclosure, resulting in data loss.

Initializing the Hard Drive

1. If the SATA Hard Drive is blank it may need to be initialized and formatted before use. From the main Windows desktop, right-click on "My Computer" ("Computer" in Vista/ 7 / 8), then select Manage. In the new Computer Management window, select Disk Management from the left window panel.



2. A dialog window should automatically appear, asking you to initialize the drive. Depending on the version of Windows, it will give you the option of either creating an “MBR” or “GPT” disk. GPT (GUID partition) is required for drives larger than 2TB but is not compatible with some older operating systems, while MBR is supported by newer and older operating systems.
3. Once initialized, locate the Disk that says it is “Unallocated” (check the listed hard drive capacity to confirm it’s the correct hard drive) and then right-click in the section that says “Unallocated” and select “New Partition”.



4. Several on screen prompts will follow walking you through the steps to create the partition. Follow these prompts to complete partition creation.

Technical Support

StarTech.com's lifetime technical support is an integral part of our commitment to provide industry-leading solutions. If you ever need help with your product, visit www.startech.com/support and access our comprehensive selection of online tools, documentation, and downloads.

For the latest drivers/software, please visit www.startech.com/downloads

Warranty Information

This product is backed by a two year warranty.

In addition, StarTech.com warrants its products against defects in materials and workmanship for the periods noted, following the initial date of purchase. During this period, the products may be returned for repair, or replacement with equivalent products at our discretion. The warranty covers parts and labor costs only. StarTech.com does not warrant its products from defects or damages arising from misuse, abuse, alteration, or normal wear and tear.

Limitation of Liability

In no event shall the liability of StarTech.com Ltd. and StarTech.com USA LLP (or their officers, directors, employees or agents) for any damages (whether direct or indirect, special, punitive, incidental, consequential, or otherwise), loss of profits, loss of business, or any pecuniary loss, arising out of or related to the use of the product exceed the actual price paid for the product. Some states do not allow the exclusion or limitation of incidental or consequential damages. If such laws apply, the limitations or exclusions contained in this statement may not apply to you.

Hard-to-find made easy. At StarTech.com, that isn't a slogan. It's a promise.

StarTech.com is your one-stop source for every connectivity part you need. From the latest technology to legacy products — and all the parts that bridge the old and new — we can help you find the parts that connect your solutions.

We make it easy to locate the parts, and we quickly deliver them wherever they need to go. Just talk to one of our tech advisors or visit our website. You'll be connected to the products you need in no time.

Visit www.startech.com for complete information on all StarTech.com products and to access exclusive resources and time-saving tools.

StarTech.com is an ISO 9001 Registered manufacturer of connectivity and technology parts. StarTech.com was founded in 1985 and has operations in the United States, Canada, the United Kingdom and Taiwan servicing a worldwide market.