

## Avens

*Geum sp.* (GEUM)

**Species description:** Avens is a native perennial forb. It is not usually described as a forage species.

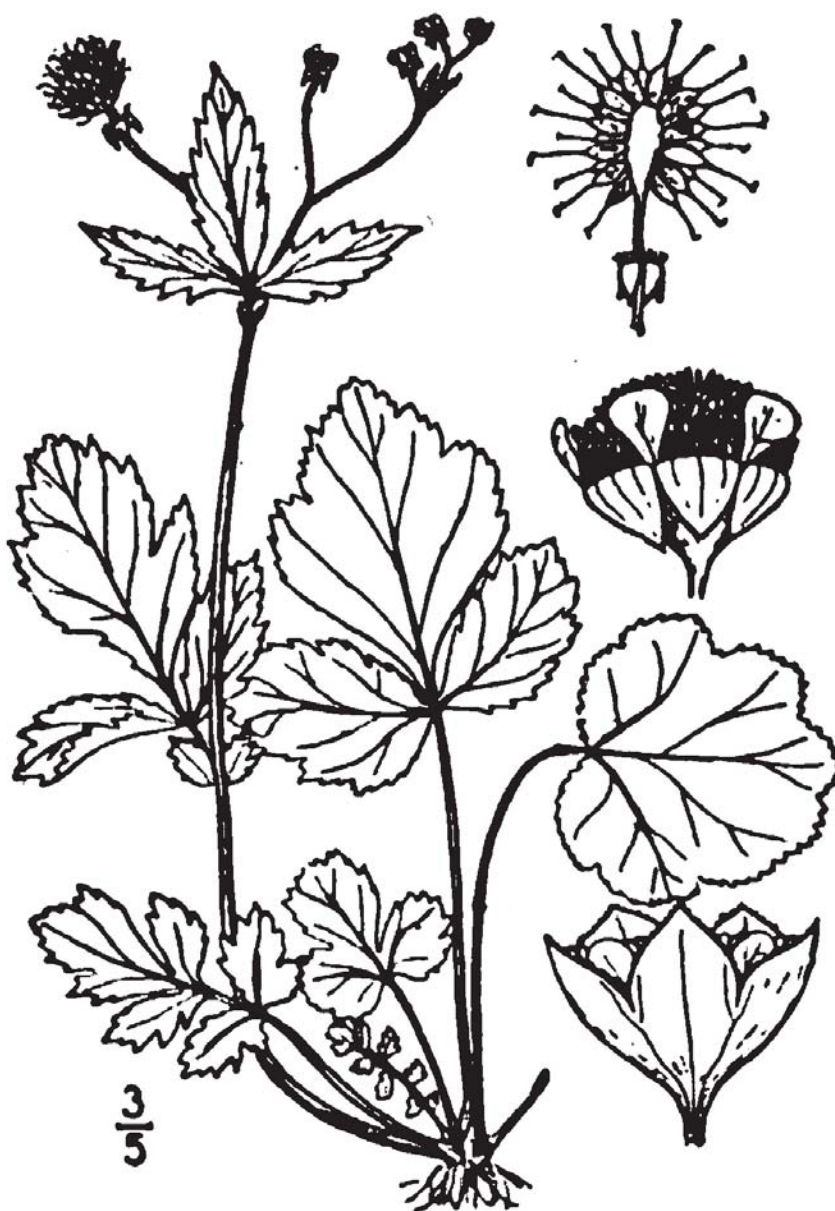
**Identifying characteristics:** Leaves alternate, pinnately divided, basal leaves with large terminal leaflets, and several smaller ones; flowers branched cluster, yellow, 1/2-1" wide.

**Similar species:** strawberries; cinquefoils; buttercups.

**Abundance in the Northeast:** Avens was found on 9% of the farms sampled and 6% of the pastures. Its average cover was 0.4% where present (range 0.2 - 0.6%).



Illustration 159: Avens



## Silver cinquefoil

*Argentina anserina* (L.) Rydb. (ARAN7)

**Species description:** Silver cinquefoil is a native perennial forb. It is not usually described as a forage species.

**Identifying characteristics:** Leaves alternate, palmately compound, 5-7 leaflets, silvery beneath, margins toothed, hairy; stems hairy to smooth, flowers yellow, 7 to 10 mm wide.

**Similar species:** Other cinquefoils; buttercups.

**Abundance in the Northeast:** Silver cinquefoil was found on 7% of the farms sampled and 3% of the pastures. Its average cover was 0.6% where present (range 0.2 - 1.1%).



Illustration 160: Silver cinquefoil



## Old field or rough cinquefoil

*Potentilla norvegica* L. (PONO3)

**Species description:** Old field cinquefoil is a native annual, biennial or perennial forb. It is not usually described as a forage species.

**Identifying characteristics:** Leaves alternate, palmately compound, 3 leaflets, dark green shiny above, hairy to wooly beneath; stems hairy; flowers yellow, 5 petals, leaf axils.

**Similar species:** Other cinquefoils; strawberries.

**Abundance in the Northeast:** Old field cinquefoil was found on 20% of the farms sampled and 10% of the pastures. Its average cover was 0.8% where present (range 0.1 - 1.8%).



Illustration 161: Old field cinquefoil



## Sulphur cinquefoil

*Potentilla recta* L. (PORE5)

**Species description:** Sulphur cinquefoil is an introduced perennial forb. It is not usually described as a forage species.

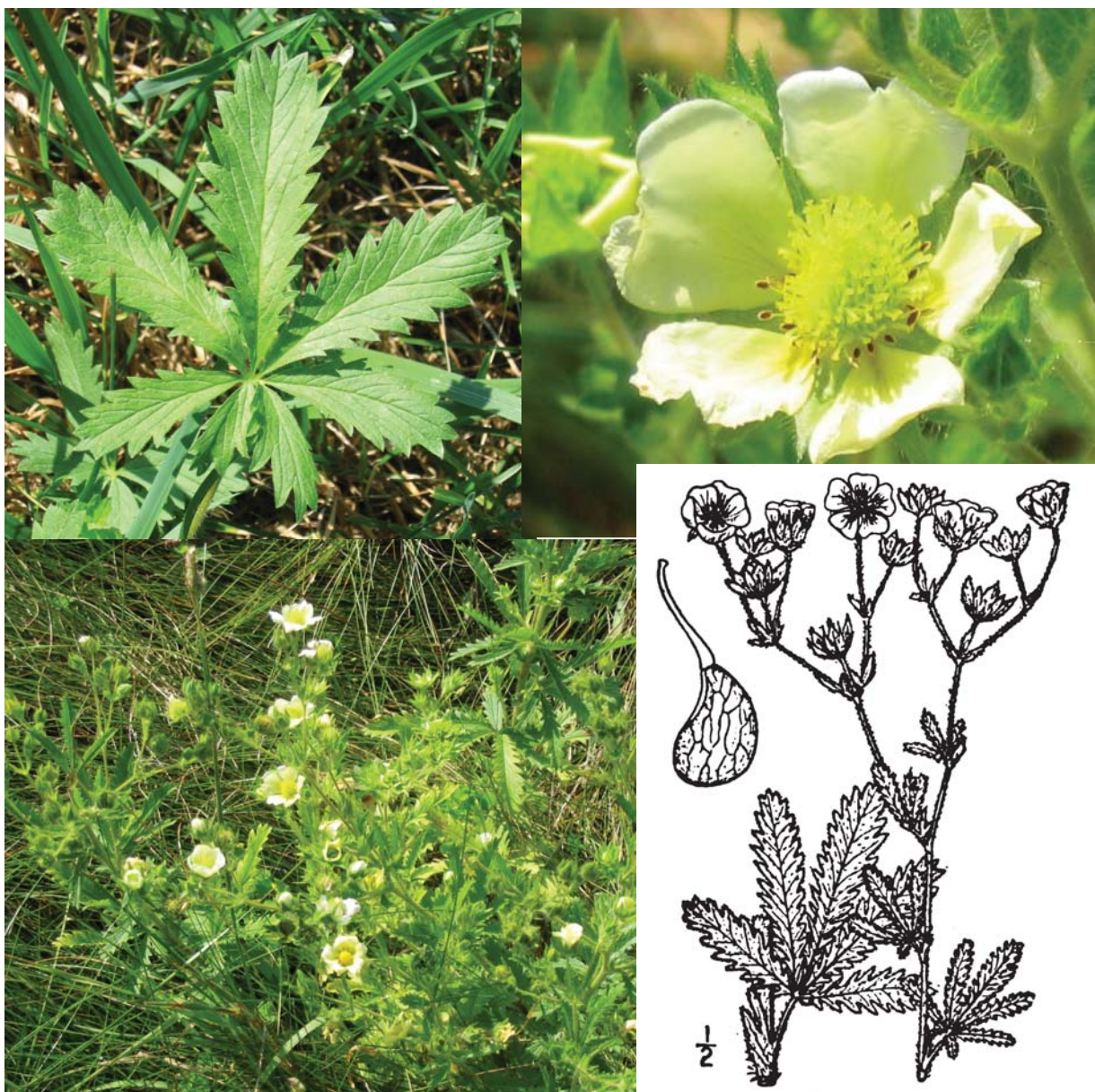
**Identifying characteristics:** Robust plant; leaves alternate, palmately compound, 5-7 leaflets, long hairs, coarsely toothed; stems unbranched, hairy; flowers pale yellow.

**Similar species:** Other cinquefoils; buttercup.

**Abundance in the Northeast:** Sulphur cinquefoil was found on 11% of the farms sampled and 6% of the pastures. Its average cover was 0.8% where present (range 0.1 - 2%).



Illustration 162: Sulphur cinquefoil



## Common cinquefoil

*Potentilla simplex* Michx. (POS12)

**Species description:** Common cinquefoil is a native perennial forb. It is not usually described as a forage species.

**Identifying characteristics:** Leaves alternate, palmately divided, 5 leaflets, toothed margins, mostly smooth; stems viny, reddish; flowers yellow on long stalks from axils.

**Similar species:** Other cinquefoils; strawberries.

**Abundance in the Northeast:** Common cinquefoil was found on 27% of the farms sampled and 23% of the pastures. Its average cover was 1.7% where present (range 0.1 - 9.6%).



Illustration 163: Common cinquefoil



## Bedstraw

*Galium mollugo* L. (GAMO)

**Species description:** Bedstraw is an introduced perennial forb. It is not usually described as a forage species.

**Identifying characteristics:** Leaves in whorls of 7 or 8, 1/2-1.5" long; stems square; flowers very small, branching clusters

**Similar species:** other bedstraws

**Abundance in the Northeast:** Bedstraw was found on 30% of the farms sampled and 25% of the pastures. Its average cover was 4.4% where present (range 0.1 - 25%).



Illustration 164: Bedstraw



## Butter and eggs; yellow toadflax

*Linaria vulgaris* P. Mill. (LIVU2)

**Species description:** Yellow toadflax is an introduced perennial forb. It is not usually described as a forage species.

**Identifying characteristics:** Leaves alternate, pale green, sessile, linear, 2-6 cm long, entire margins, numerous appear whorled; stems smooth; flowers yellow, snapdragon like.

**Similar species:** lobelia; orchids.

**Abundance in the Northeast:** Butter and eggs; yellow toadflax was found on 20% of the farms sampled and 9% of the pastures. Its average cover was 0.4% where present (range 0.1 - 0.7%).



Illustration 165: Butter and eggs; yellow toadflax



## Moth mullein

*Verbascum blattaria* L. (VEBL)

**Species description:** Moth mullein is an introduced biennial forb. It is not usually described as a forage species.

**Identifying characteristics:** Leaves alternate, smooth, crinkled green, toothed margin, short petioles; Flowers 4 petals, white to yellow with purple hairs on stamens.

**Similar species:** common mullein is very fuzzy

**Abundance in the Northeast:** Moth mullein was found on 16% of the farms sampled and 8% of the pastures. Its average cover was 0.4% where present (range 0.1 - 1.2%).



Illustration 166: Moth mullein





## Common mullein

*Verbascum thapsus* L. (VETH)

**Species description:** Common mullein is an introduced biennial forb. It is not usually described as a forage species.

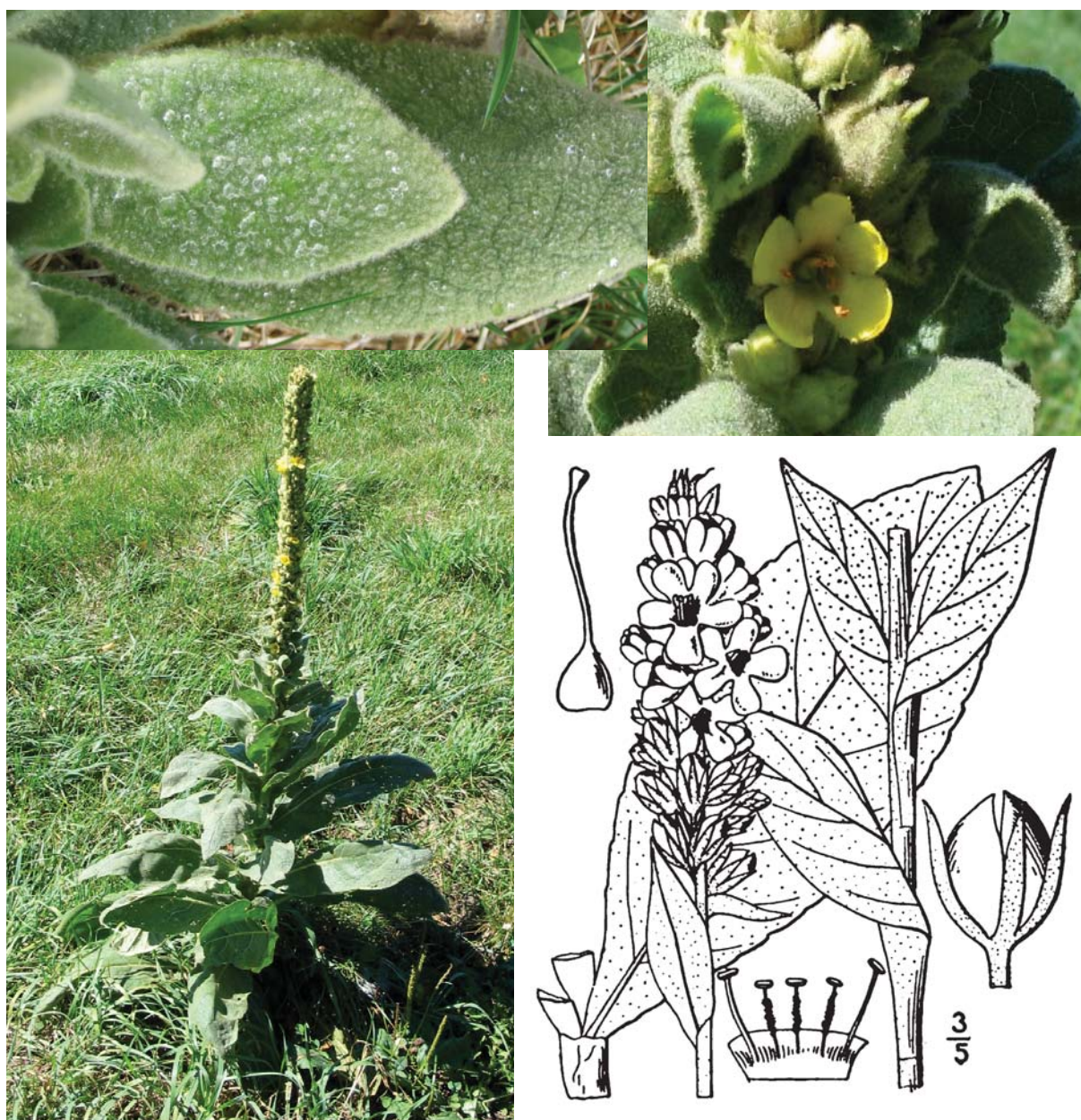
**Identifying characteristics:** Leaves oblong and densely hairy in basal rosette, alternate and woolly on stem; flowers yellow, fused petals, on a spike.

**Similar species:** moth mullein

**Abundance in the Northeast:** Common mullein was found on 9% of the farms sampled and 4% of the pastures. Its average cover was 0% where present (range 0 - 0%).



Illustration 167: Common mullein



## Corn speedwell

*Veronica arvensis* L. (VEAR)

**Species description:** Corn speedwell is an introduced annual forb. It is not usually described as a forage species.

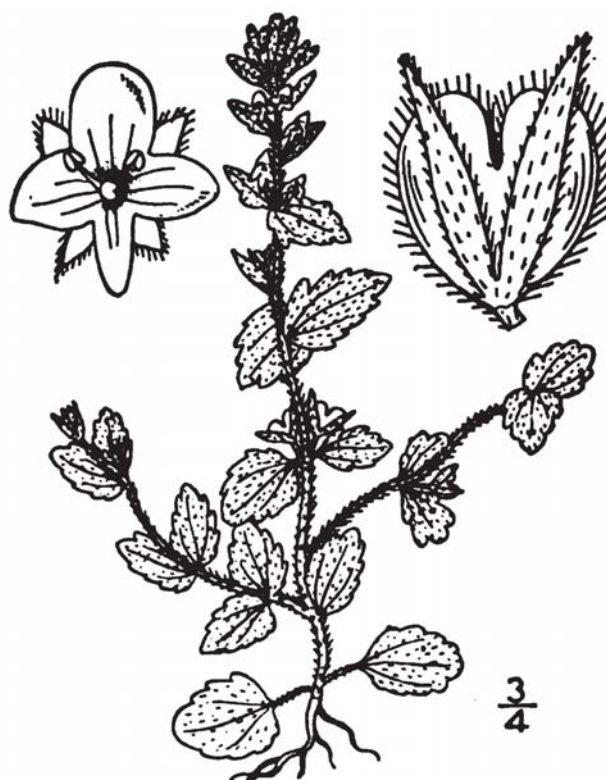
**Identifying characteristics:** Leaves hairy, opposite at bottom, alternate on stem, petiolated, egg shaped, rounded teeth on margin; flowers single tiny blue flowers without stalks in axils.

**Similar species:** Other speedwells.

**Abundance in the Northeast:** Corn speedwell was found on 7% of the farms sampled and 4% of the pastures. Its average cover was 0.5% where present (range 0.2 - 1.1%).



Illustration 168: Corn speedwell



## Germander speedwell

*Veronica chamaedrys* L. (VECH)

**Species description:** Germander speedwell is an introduced perennial forb. It is not usually described as a forage species.

**Identifying characteristics:** Leaves hairy, opposite, egg shaped, coarsely toothed; flowers blue, clustered on stalks; larger flowers than common speedwell (1/2" wide).

**Similar species:** Other speedwells, especially common.

**Abundance in the Northeast:** Germander speedwell was found on 20% of the farms sampled and 18% of the pastures. Its average cover was 3.5% where present (range 0.1 - 13.8%).



Illustration 169: Germander speedwell



## Common speedwell

*Veronica o icinalis* L. (VEOF2)

**Species description:** Common speedwell is a native perennial forb. It is not usually described as a forage species.

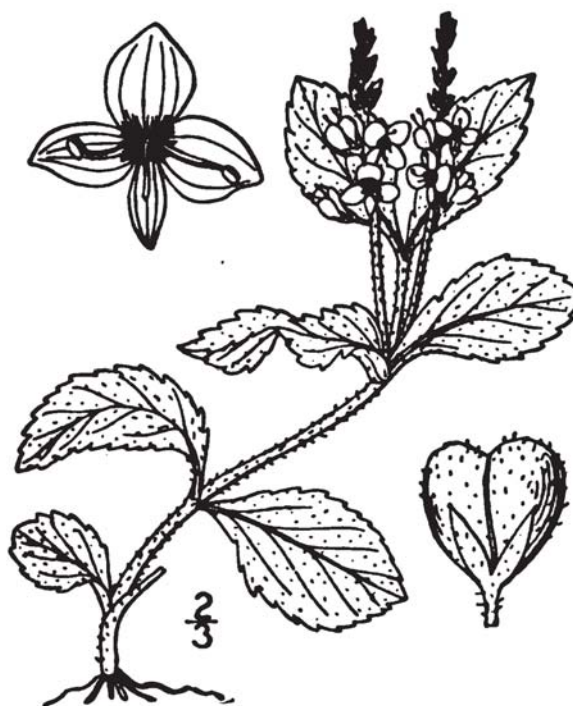
**Identifying characteristics:** Leaves hairy, opposite, elliptical, 1-2" long, sharply toothed; flowers blue, clustered on stalks; smaller flowers than germander speedwell (1/4" wide).

**Similar species:** Other speedwells, especially germander.

**Abundance in the Northeast:** Common speedwell was found on 41% of the farms sampled and 22% of the pastures. Its average cover was 0.6% where present (range 0.1 - 4.5%).



Illustration 170: Common speedwell



## Purslane speedwell or neckweed

*Veronica peregrina* L. (VEPE2)

**Species description:** Purslane speedwell is a native annual forb. It is not usually described as a forage species.

**Identifying characteristics:** Leaves smooth, opposite at bottom, alternate on stem, obscurely toothed; stem erect; flowers single tiny whitish flowers without stalks in axils.

**Similar species:** Other speedwells, especially thymeleaf.

**Abundance in the Northeast:** Purslane speedwell was found on 5% of the farms sampled and 2% of the pastures. Its average cover was 0.1% where present (range 0.1 - 0.1%).



Illustration 171: Purslane speedwell



## Persian or birdeye speedwell

*Veronica persica* Poir. (VEPE3)

**Species description:** Persian speedwell is a native annual forb. It is not usually described as a forage species.

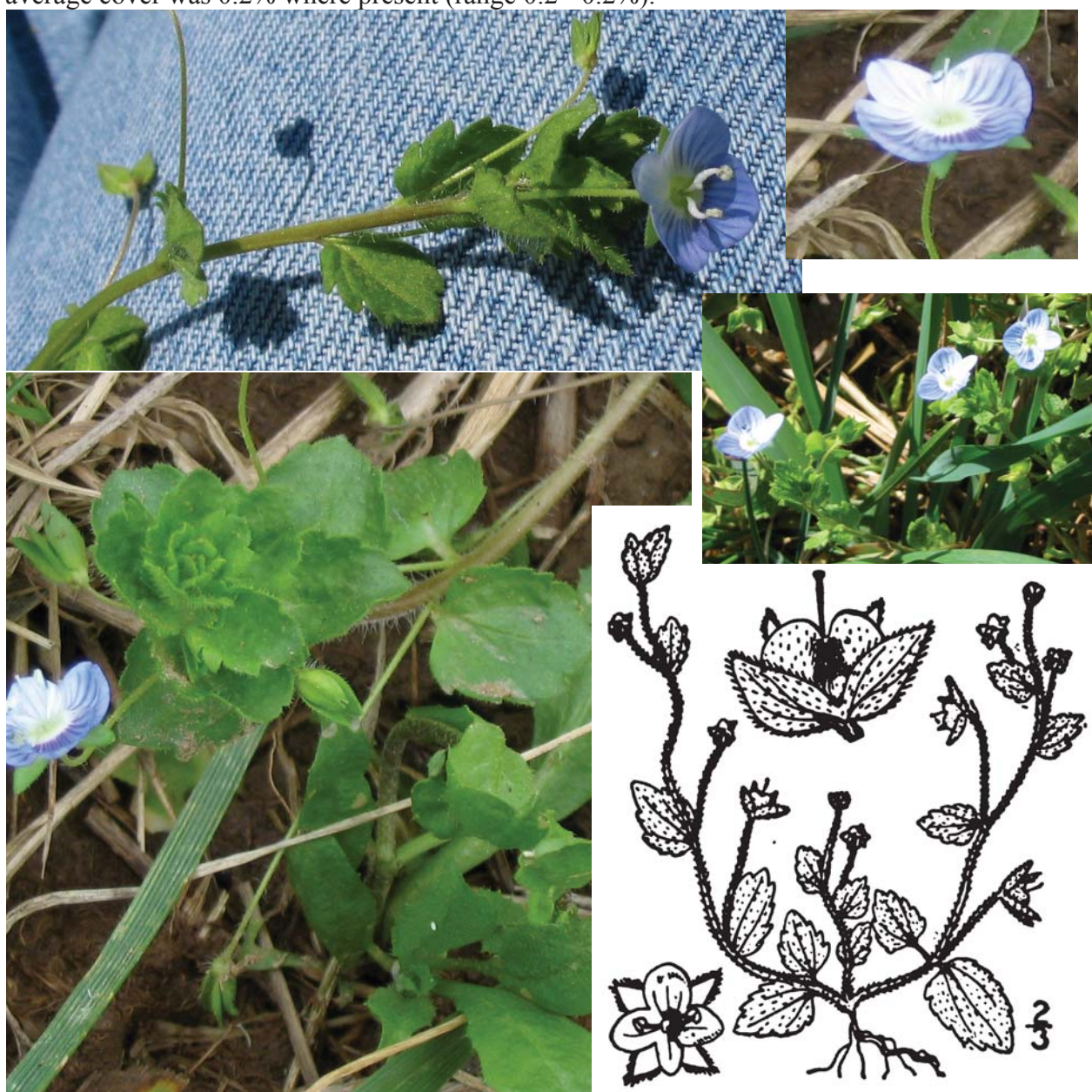
**Identifying characteristics:** Leaves smooth, opposite at bottom, alternate on stem, petiolated, heart shaped, coarse teeth; flowers single blue flowers on long stalks in axils.

**Similar species:** Other speedwells especially corn speedwell

**Abundance in the Northeast:** Persian speedwell was found on 7% of the farms sampled and 3% of the pastures. Its average cover was 0.2% where present (range 0.2 - 0.2%).



Illustration 172:  
Persian speedwell



## Thymeleaf speedwell

*Veronica serpyllifolia* L. (VESE)

**Species description:** Thymeleaf speedwell is a native perennial forb. It is not usually described as a forage species.

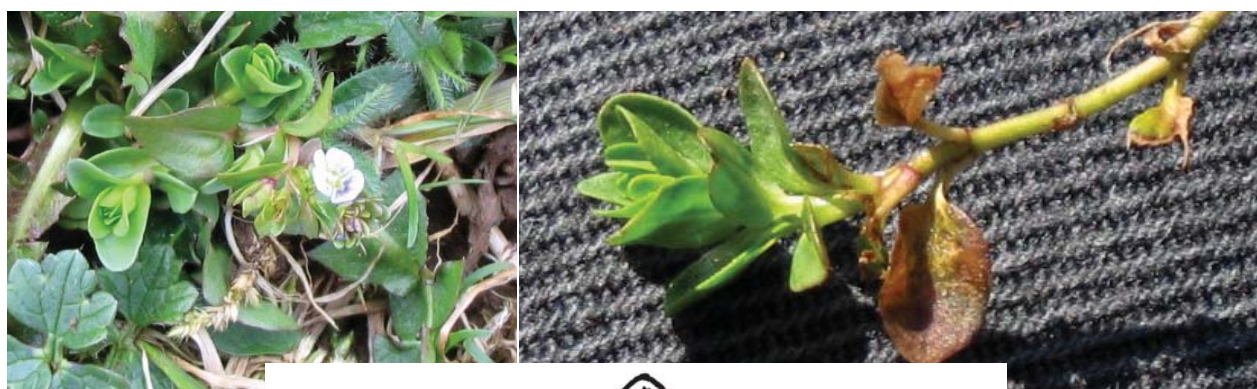
**Identifying characteristics:** Leaves small opposite, obscurely toothed, smooth, egg shaped; flowers single pale whitish flowers with dark stripes, on stalks in axils

**Similar species:** Other speedwells, especially purslane.

**Abundance in the Northeast:** Thymeleaf speedwell was found on 45% of the farms sampled and 27% of the pastures. Its average cover was 0.4% where present (range 0.1 - 1.3%).



Illustration 173: Thymeleaf speedwell



## Jimson weed

*Datura stramonium* L. (DAST)

**Species description:** Jimson weed is an introduced annual forb. It is not usually described as a forage species.

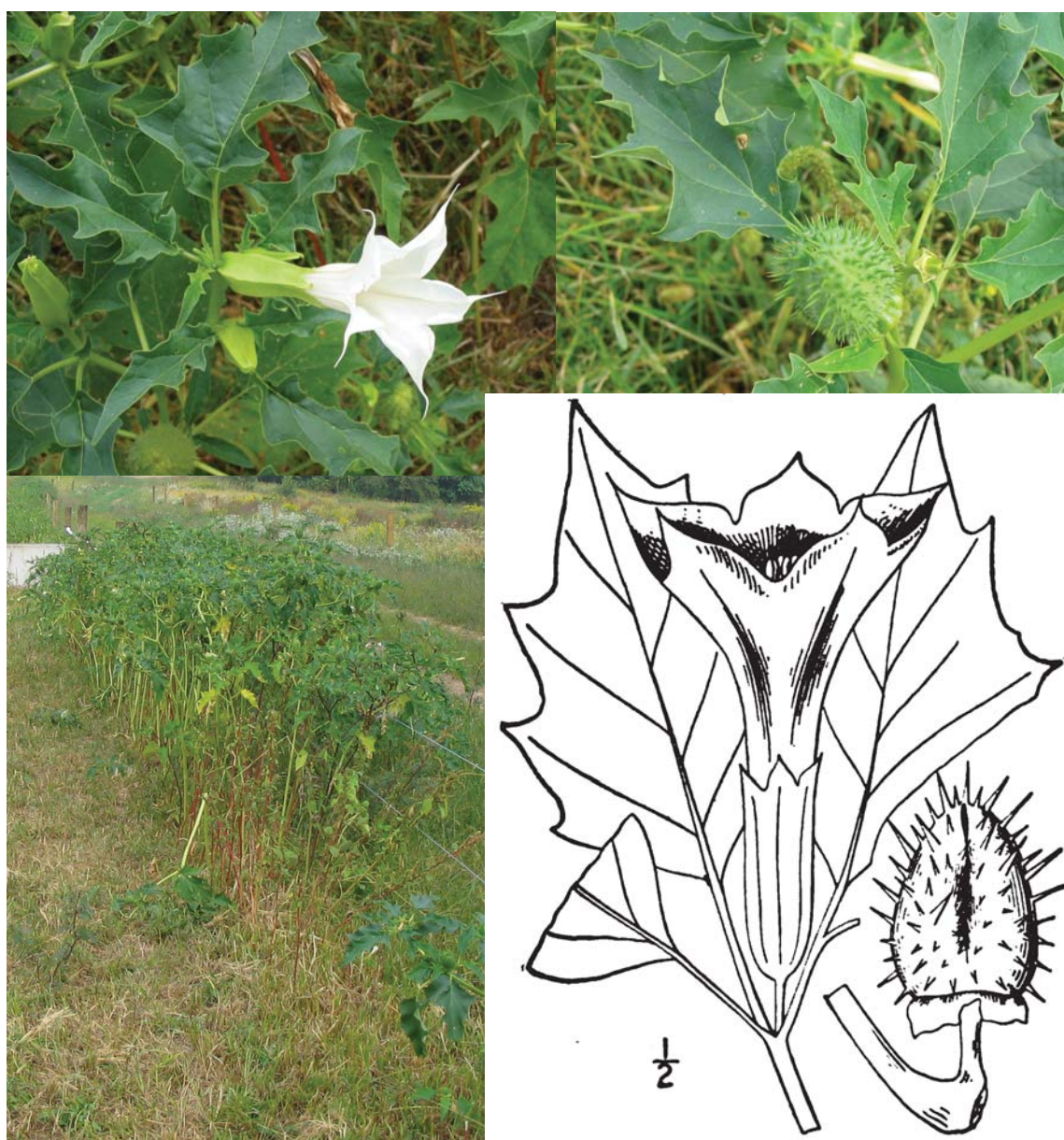
**Identifying characteristics:** Leaves spiny, alternate, large, smooth, dark green, resemble oak leaf; stems are purple; flowers white trumpet-shaped; fruit spiny; POISONOUS.

**Similar species:** horesenttle; nightshade; groundcherry.

**Abundance in the Northeast:** Jimson weed was found on 7% of the farms sampled and 2% of the pastures. Its average cover was 0.1% where present (range 0.1 - 0.1%).



Illustration 174: Jimson weed





## Clammy groundcherry

*Physalis heterophylla* Nees (PHHE5)

**Species description:** Clammy groundcherry is a native perennial forb. It is not usually described as a forage species.

**Identifying characteristics:** Leaves alternate, ovate or heart shaped, pointed at tip, coarsely toothed; stems covered with sticky hairs; flowers yellow, purple center; Inflated fruit husk.

**Similar species:** smooth ground cherry; horsenettle.

**Abundance in the Northeast:** Clammy groundcherry was found on 20% of the farms sampled and 12% of the pastures. Its average cover was 0.5% where present (range 0.1 - 1%).



Illustration 175: Clammy groundcherry



## Horsenettle

*Solanum carolinense* L. (SOCA3)

**Species description:** Horsenettle is a native perennial forb.

It is not usually described as a forage species.

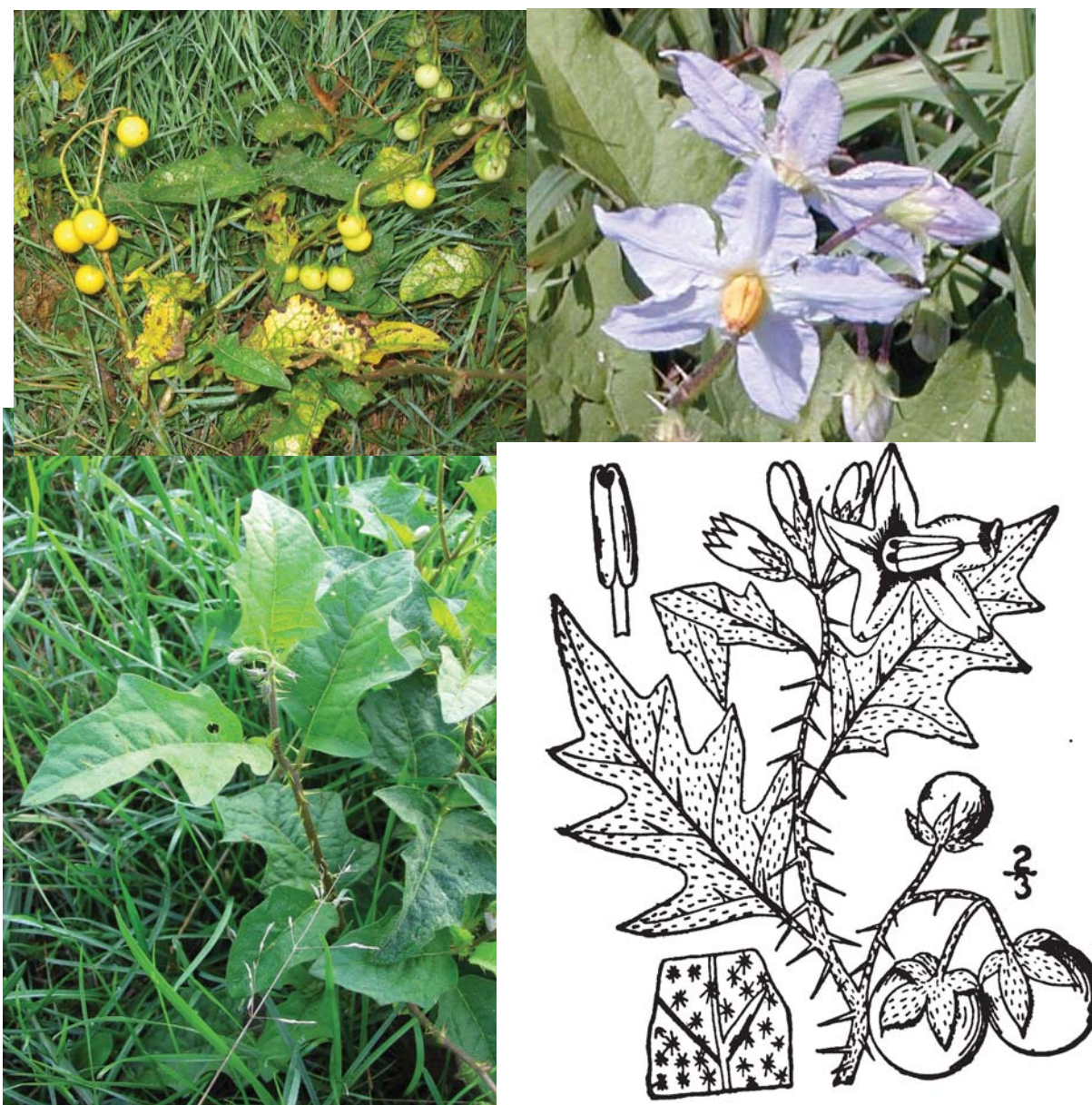
**Identifying characteristics:** Leaves alternate, egg-shaped, 2-5 shallow lobes, hairs on both surfaces; Spines on leaves and stem; flowers 5 fused white to violet petals, yellow anthers; yellow berries

**Similar species:** groundcherries; Jimson weed.

**Abundance in the Northeast:** Horsenettle was found on 32% of the farms sampled and 31% of the pastures. Its average cover was 2% where present (range 0.1 - 26.5%).



Illustration 176: Horsenettle



## Black nightshade

*Solanum nigrum* L. (SONI)

**Species description:** Black nightshade is an introduced annual or perennial forb. It is not usually described as a forage species.

**Identifying characteristics:** Leaves alternate, hairy, triangular, margins entire to wavy toothed; stems hairy; flowers white, drooping, along branches, star shaped; black tomato-like berries

**Similar species:** horsenettle; groundcherries.

**Abundance in the Northeast:** Black nightshade was found on 20% of the farms sampled and 13% of the pastures. Its average cover was 0.1% where present (range 0.1 – 0.1%).



Illustration 177:  
Black nightshade



## Nettle

*Urtica dioica* L. (URDI)

**Species description:** Nettle is an introduced perennial forb. It is not usually described as a forage species.

**Identifying characteristics:** Leaves opposite, ovate, margins deeply toothed, stinging hairs on lower surface; stems square, stinging hairs; flowers green, branched clusters in leaf axils.

**Similar species:** vervains; boneset.

**Abundance in the Northeast:** Nettle was found on 11% of the farms sampled and 5% of the pastures. Its average cover was 0.4% where present (range 0.4 - 0.4%).



Illustration 178: Nettle



## Hoary vervain

*Verbena stricta* Vent. (VEST)

**Species description:** Hoary vervain is a native annual or perennial forb. It is not usually described as a forage species.

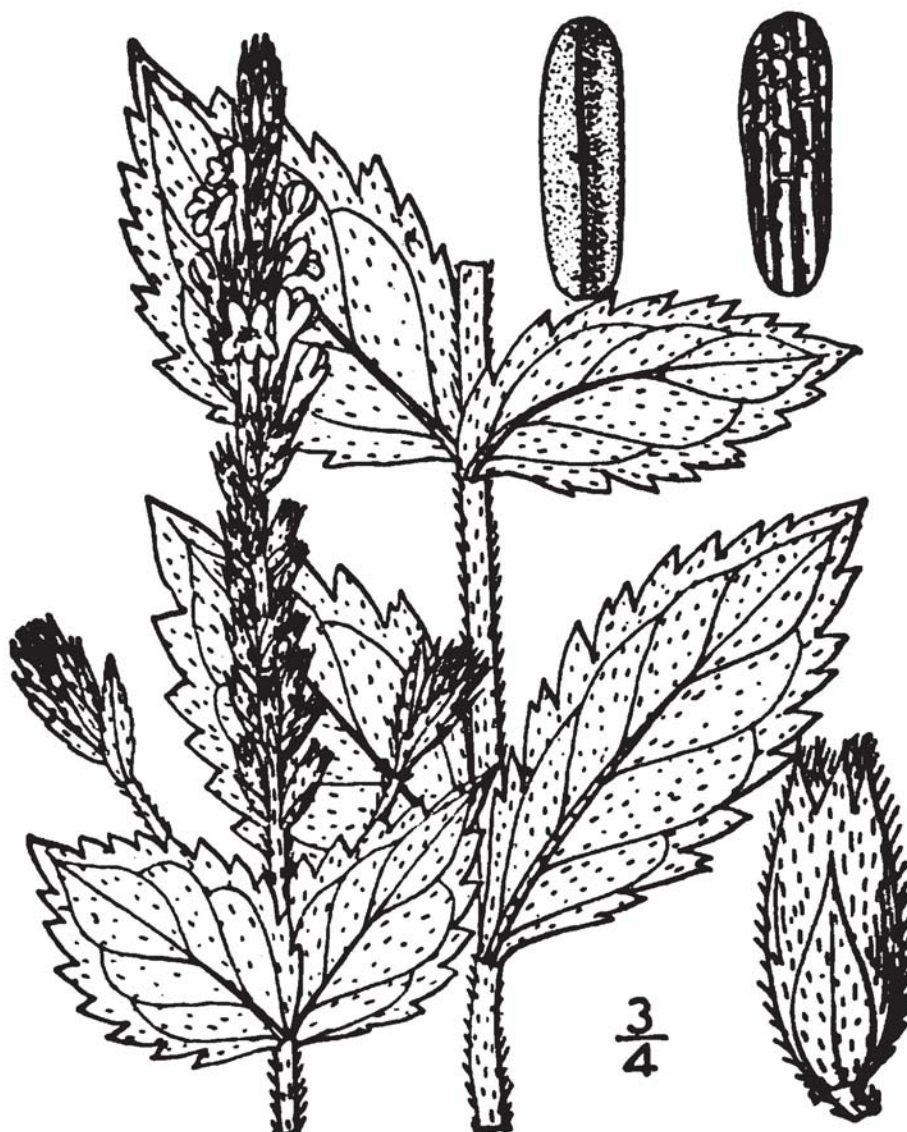
**Identifying characteristics:** Leaves opposite, egg-shaped, coarsely toothed; stems hairy somewhat square; flowers spiked, small, purple.

**Similar species:** White vervain; Nettle.

**Abundance in the Northeast:** Hoary vervain was found on 9% of the farms sampled and 5% of the pastures. Its average cover was 0.2% where present (range 0.2 - 0.2%).



Illustration 179: Hoary vervain



## White vervain

*Verbena urticifolia* L. (VEUR)

**Species description:** White vervain is a native perennial forb. It is not usually described as a forage species.

**Identifying characteristics:** Leaves opposite, egg-shaped, coarsely toothed; stems hairy somewhat square; flower spikes slender, white.

**Similar species:** Hoary vervain; Nettle.

**Abundance in the Northeast:** White vervain was found on 16% of the farms sampled and 8% of the pastures. Its average cover was 0.3% where present (range 0.1 - 0.5%).



Illustration 180: White vervain



## European field pansy

*Viola arvensis* Murr. (VIAR)

**Species description:** European field pansy is an introduced annual forb. It is not usually described as a forage species.

**Identifying characteristics:** Leaves alternate, spatulate, hairy, rounded teeth on margin; Flowers small, similar to garden pansy, pale yellow or yellow with purple.

**Similar species:** Violet.

**Abundance in the Northeast:** European field pansy was found on 2% of the farms sampled and 2% of the pastures. Its average cover was 0.1% where present (range 0.1 - 0.1%).



Illustration 181: European field pansy



## Violet

*Viola spp.* (VIOLA)

**Species description:** Violet is a native perennial forb. It is not usually described as a forage species.

**Identifying characteristics:** Leaves heart-shaped, curled at the base, pointed at apex, smooth, rounded teeth on margin long petioles; flowers asymmetrical, purple.

**Similar species:** European field pansy.

**Abundance in the Northeast:** Violet was found on 48% of the farms sampled and 30% of the pastures. Its average cover was 1.2% where present (range 0.1 - 12.5%).



Illustration 182: Violet

