

GM 26501

DIAMOND DRILL LOG

Documents complémentaires

Additional Files



Licence



Licence

Cette première page a été ajoutée
au document et ne fait pas partie du
rapport tel que soumis par les auteurs.

Énergie et Ressources
naturelles

Québec 

HOLE : 70-W-1

DIAMOND DRILL LOG

TOWNSHIP	: <u>WOLFELTOWN</u>	TOTAL DEPTH	: <u>300'</u>
RANGE	: <u>III (TWO)</u>	ORIENTATION	: <u>AZ: 175°</u>
LOT	: <u>22</u>	ANGLE, COLLAR	: <u>45°</u>
CLAIM NO	: <u>286780-1</u>	ANGLE	: _____
NEARLST	: <u>1700' N.E. + 810' N.W.</u>		: _____
LOT CORNER	: <u>OF THE S.E. CORNER</u>		: _____
GRID	: _____	DATE STARTED	: <u>MAY 6, 1970</u>
CO-ORDS	: <u>70' S.W. OF LINE 1/8-10W</u>	DATE FINISHED	: <u>MAY 12, 1970</u>
ELEVATION	: _____	HOLE SIZE	: <u>AC/W.I.</u>
LOGGED BY	: <u>R.C. BEARD</u>	CONTRACTOR	: <u>ST LAMBERT DIAMOND DRILLING.</u>

FOOTAGE	
FROM	TO
0	36
36	300
300	300

OVERBURDEN

PERIDOTITE.

MASSIVE V.F.G., BRITTLE, BLACK TO DARK GREEN IN COLOR. FEW VISIBLE PXXLS. MOD. SERPENTINIZED, MOD. MAG. W/OCCASS. SL. MAG. ZONES. MTE, XLS, V.F.G. LITTLE SHEARING W/FEW SLIP PLANES. CORE GENERALLY IN LARGE PIECES, ONLY OCCASS. BROKEN. SOME ZONES ARE PALE COLORED, EXHIBITING VAGUE LAYERING PLUS STRINGERING FROM MTE. CONCENTRATIONS. OTHERWISE ROCK IS VERY MASSIVE AND NON-LAYERED.

AVG. FIBRE CONTENT $< 1/2\%$, USUALLY IN WIDELY SCATT. COMPOSITE VEINLETS OF X-FIB., SLIP FIB. + PICROLITE. INDIVIDUAL VEINLETS ARE 1/16" - 3/8" WIDE, WITH X-FIB VEINLETS NARROWER, SELDOM EXCEEDING 1/16"

36 - 43 PALE GREY GREEN IN COLOR W/ SURFACE ALTERATION.

43 - 97 DARK MASSIVE PERIDOTITE. C.A. (LAYERING) = 50° - 63°.

97 - 122 PALE GREY IN COLOR + VAGUELY LAYERED. C.A. 35° - 40°.

122 - 156 DARK MASSIVE PERID., LIKE 43' - 97'. TWO 6" ZONES OF SHEARED ROCK WITH PICROLITE + SLIP FIBRE @ 137' + 142'.

156 - 225 PERDOMINATELY GREY, VAGUELY LAYERED AND SEAMED PERID. LIKE 97' - 122' BUT WITH SCATT. DARKER AND MORE MASSIVE APPEARING ZONES. FIBRE VEINLETS NOT AS NUMEROUS AS ABOVE, BUT SL. WIDER. C.A. (LAYERING): 156' - 175' = 35° - 40°, 200' - 225' = 35°.

225 - 265 SIMILAR TO ABOVE, BUT W/ CONSPICUOUS GREEN PICROLITE ALTERATION AND REPLACEMENT IN SEAMS + SLOTS. CORE LOCALLY FRACTURED + BROKEN. C.A. ERATIC.

265 - 300 SAME AS 156' - 225'. LITTLE FIBRE. CORE MASSIVE, IN LG. PIECES.

Ministère des Richesses Naturelles, Québec
 18 NOV 1970
 SERVICE DES GLITES MINÉRAUX
 No. GM- 26501

HOLE : 70-W-2

10

DIAMOND DRILL LOG

TOWNSHIP	: <u>WOLFESTOWN</u>	TOTAL DEPTH	: <u>307'</u>
RANGE	: <u>1</u>	ORIENTATION	: <u>AZ: 232°</u>
LOT	: <u>24</u>	ANGLE, COLLAR	: <u>45°</u>
CLAIM NO	: <u>283163-1</u>	ANGLE	: _____
NEAREST	: <u>1500' N.E. AND 225' N.W.</u>		: _____
LOT CORNER	: <u>TO THE NORTH LOT CORNER.</u>		: _____
GRID	: <u>50' N.E. OF LINE "R"/2+25E</u>	DATE STARTED	: <u>MAY 13, 1970</u>
CO-ORDS	: _____	DATE FINISHED	: <u>MAY 16, 1970</u>
ELEVATION	: _____	HOLE SIZE	: <u>A.C./W.L.</u>
LOGGED BY	: <u>R.C. BEARD</u>	CONTRACTOR	: <u>ST LAMBERT DIAMOND DRILLING CO.</u>

FOOTAGE		
FROM	TO	
0	52	<u>OVERBURDEN.</u>
52	307	<p><u>PERIDOTITE.</u></p> <p>MASSIVE, V.F.G. BLACK, MOD. SERPENTINIZED. VISIBLE PX,XLS RANGE FROM OCCASSIONAL TO PROMINENT, 1-4 M.M. IN SIZE. MOD. MAG. THROUGHOUT, EXCEPT NEAR CONTACTS WITH GRANITIC INTRUSIVES. LITTLE SHEARING. SLIP PLANES SL. TO MOD. PROMINENT, OFTEN COATED W/PIGROLITE. OCCASS. GRANITIC ZONES 5"-15" WIDE. AVG. FIBRE CONTENT 1-2% , NOT UNIFORMY DISTRIBUTED. VEINLETS ARE OFTEN VERY NUMEROUS, GIVING A FINELY SHATTERED APPEARANCE TO CORE, BUT VERY NARROW, SELDOM EXCEEDING 1/16". SOME VEINLETS CONTAIN CROSS-FIBRE, BUT MUCH OF THE VEIN FILLING IS SLIP FIBRE AND PIGROLITE..</p> <p>52 - 121. 3% FIBRE. VEINLETS VERY NARROW + IRREG. OCCASS VEINS UP TO 1/16" BUT MOSTLY SLIP FIBRE. FROM 103' TO 112', VERY LEAN + LT. COLORED.</p> <p>121 - 128. NON MAG. CONTACT ZONE. LEAN.</p> <p>128 - 134. GRANITIC INTRUSIVE. C.G. FLD + QTZ W/ INTERMIXED SERPENTINE.</p> <p>134 - 153. NON MAG. CONTACT ZONE. CONTAMINATED FROM GRANITE. TR. T.V. FIE. SL. MAG. LEAN.</p> <p>153 - 163. NON MAG. VERY LEAN.</p> <p>163 - 165. GRANITIC INTRUSIVE. MED TO C.G. FLD, QTZ, AND REDDISH BIOTITE, WITH SCATT. PERID. INCLUSIONS.</p> <p>165 - 179. NON MAG. LEAN TO BARREN.</p> <p>179 - 183. TYPICAL PERID. PX,XLS. MORE CONSPIC. THAN ABOVE. 1% FIBRE, BOTH CROSS + SLIP. VEINLETS VERY IRREGULAR AND NARROW. OCCASS SHEARED ZONE CONTAINING MUCH PIGROLITE ALONG SLIP PLANES. SEVERAL 6" - 8" ZONES OF RIBBON TYPE VEINS CONTAINING UP TO 6% FIBRE AT 198', 208', 232', 242'.</p> <p>183 - 245. 7% - 9% FIBRE. NUMEROUS IRREG. VEINLETS, VERY NARROW, SELDOM EXCEEDING 1/16", VARY FROM RANDOMLY ORIENTATED TO SUB-PARALLEL.</p> <p>245 - 271. PERID., LIGHTER GREY IN COLOR, MORE SHEARED AND BROKEN. 1-2% FIE. AS ABOVE. AT 281', A 7" GRANITIC ZONE.</p> <p>271 - 307. END OF HOLE.</p>

HOLE : 70-IV-3

DIAMOND DRILL LOG

TOWNSHIP	:	<u>WOLFESTOWN</u>	TOTAL DEPTH	:	<u>300'</u>
RANGE	:	<u>1</u>	ORIENTATION	:	<u>Az. 3170</u>
LOT	:	<u>24</u>	ANGLE, COLLAR	:	<u>450</u>
CLAIM NO	:	<u>283163-1</u>	ANGLE	:	_____
NEAREST LOT CORNER	:	<u>2501 N.W. AND</u>		:	_____
GRID	:	<u>15101 N.E. TO THE</u>	DATE STARTED	:	<u>MAY 17, 1970</u>
CO-ORDS	:	<u>NORTH LOT CORNER</u>	DATE FINISHED	:	<u>MAY 21, 1970</u>
ELEVATION	:	<u>501 N. OF LINE "B"</u>	HOLE SIZE	:	<u>AG W/1</u>
LOGGED BY	:	<u>R.C. DEARD</u>	CONTRACTOR	:	<u>ST. LAMBERT DRILLING CO.</u>

FOOTAGE		
FROM	To	
0	54	<u>OVERBURDEN</u>
54	72	<u>PERIDOTITE.</u> MASSIVE / DARK GREY TO GREENISH / V.F.G. W/OCCASS VISIBLE PX GRAINS / MOD. SERP / MOD. MAG / CORE MOD. BROKEN / TR. T.V. FIB.
72	108	MOD. ALTERED GRANITIC INTRUSIVE CONSISTING OF GRANULAR APPEARING QUARTZ, FLD. AND CONSPICUOUS DARK RED MICA, WHICH GIVES AN OVERALL PALE REDDISH GREY COLOR / OCCASS. QTZ VEINING / SEVERAL 2' TO 5' ZONES OF WHITE QTZ-FLD / PERID. ALTERED AT CONTACTS.
108	132	<u>PERIDOTITE</u> SIM. TO 54-72. TR. T.V. FIB.
132	151	GRANITIC INTRUSIVE, SAME AS 72-108.
151	215	<u>PERIDOTITE</u> SAME AS 54-72 / LARGELY MASSIVE & UNBROKEN / LESS THAN 1% FIBRE AS THIN. IRREG. THREAD VEINS, OCCASS UP TO 1/32" IN WIDTH / FIBRE LARGELY CONC. IN OCCASS. FR. & SHEAR. ZONES / AT 190, SEVERAL VEINLETS OF X-FIB. UP TO 1/16"
215	270	<u>PERIDOTITE</u> SIM TO ABOVE BUT MORE SHEARED + FRACTURED, W/ CONSPICUOUS WHITE VEINING, ONLY A SMALL PART OF WHICH IS TRUE ASBESTOS FIBRE / 1-2% SLIP FIBRE AS VERY NARROW IRREG. VEINLETS / ONLY TRACES OF X/FIB.
270	300	<u>PERIDOTITE</u> SAME AS 151-215. LESS THAN 1% FIBRE.

EOH

HOLE : 70-V-1

10

DIAMOND DRILL LOG

TOWNSHIP	:	<u>VOLESTOWN</u>	TOTAL DEPTH	:	<u>300</u>
RANGE	:	<u>1</u>	ORIENTATION	:	<u>AZ: 277°</u>
LOT	:	<u>23</u>	ANGLE, COLLAR	:	<u>150</u>
CLAIM NO	:	<u>283164-1</u>	ANGLE	:	
NEAREST LOT CORNER	:	<u>1601 S.E. AND 17601 S.W.</u>		:	
GRID	:	<u>TO THE SOUTH LOT CORNER.</u>	DATE STARTED	:	<u>MAY 25, 1970</u>
Co-ORDS	:	<u>2251 S.W. OF LINE "GN"/1-150W</u>	DATE FINISHED	:	<u>MAY 28, 1970</u>
ELEVATION	:		HOLE SIZE	:	<u>A.O. W.I. (CASING FEET IN HOLE)</u>
LOGGED BY	:	<u>K.V. BERRY</u>	CONTRACTOR	:	<u>ST. LAURENT DIAMOND DRILLING CO.</u>

FOOTAGE
FROM TO

0 28
28 300

OVERBURDEN.

PERIDOTITE, WITH OCCASS. GRANITIC SECTIONS.

MASSIVE, BLACK, MOD. SERP. PERID./MOD. MAGNETIC, VAGUE REMNANT PX. XLS. VISIBLE THROUGHOUT, GIVING A VAGUE SPOTTED APPEARANCE. CORE MOD. BROKEN BY SLIP PLANES, NOT HIGHLY SHEARED.

FIBRE CONSPIC. THROUGHOUT, BUT OCCUREN^{INC}CY ALMOST ENTIRELY ^{IS A STOCKWORK OF} IRREGULAR ^{AND} VERY NARROW VEINLETS 1/32". INDIV. VEINLETS IN THIS STOCKWORK ARE VERY IRREG. AND DISCONTINUOUS AND CONTAIN SOME SHORT CROSS-FIBRE, BUT MUCH SLIP FIBRE ALSO PRESENT. AVG. FIBRE CONTENT 4-5% BUT MUCH OF THE FIBRE IS PROBABLY TOO SHORT TO REPORT OUT IN LAB. CORE RECOVERY 99%.

- 28 - 57 6% FIBRE. PALE COLOR DUE TO FIBRE. CORE MOD. BROKEN. SOME SHEARING NEARLY PARALLEL TO C.A.
- 57 - 76 LEANER. 1-2% FIBER. OCCASS 1/2"-3" ZONE OF RIBBON TYPE FIBRE WITH INDIV. HWY. VEINLETS TO 1/32".
- 76 - 120 6-8% FIBER. SIM. TO 28 - 57. OCCASS 1"-2" LEAN ZONE.
- 120 - 131 GRANITIC INTRUSIVE. MED TO C.G. FLD, QTZ, PLUS SOME BIOTITE. CONTACTS SHARP. NO SERP. INCLUSIONS.
- 131 - 143 5-6% FIBRE. CORE LOC. DARKER, MORE TALCY, PLUS SERP. SLIP FIBRE MORE COMMON.
- 143 - 159 1/2% FIBER. PALE GRAY, DENSE, PLUS MORE BRITTLE, FRESHER PERIDOTITE WITH IRREGULAR ZONES AND STRINGERS OF PALE GREEN PICROLITE ALTERATION.
- 159 - 167 2-3% FIBRE. CORE LOC. HIGHLY BROKEN. LOC. VERY LEAN.
- 167 - 184 7 - 9% FIBRE. VEINLETS VERY NARROW WITH FIBRE POOR QUALITY. SLIP FIBRE MORE PROMINENT.
FROM 170-173, VEINLETS SUB-PARALLEL.
FROM 174-177, FR. PARALLEL TO C.A., WITH SLIP FIBER.
- 184 - 207 GRANITE INTRUSIVE, SIM TO 120-131. SERPENTINE INCLUSIONS @ 187-188 1/2, 189 1/2-190 1/2, 191 1/2-198.
- 207 - 247 3-4% FIBER, BOTH SLIP FIBRE STOCKWORK AND SOME DISTINCT, VERY NARROW X-FIBER VEINLETS < 1/32".
AT 230', A 3" PICROLITE VEIN.
- 247-261 < 1% FIBER, MOSTLY BARREN BLACK SERPENTINE, BUT WITH SOME ZONES OF SHEARED AND ALTERED ROCK.
- 261 - 266 GRANITIC INTRUSIVE. MINOR SERPENTINE INCLUSIONS. GRANITE MATERIAL LOCALLY LEACHED.
- 266-300 3-5% FIBER. MINERALIZATION ERATIC, VARIES FROM FINE SLIP FIBER VEINLETS TO RIBBON TYPE X-FIBER. SOME BARREN ZONES 1-2" WIDE. AT 283 1/2-288, PLUS 10% RIBBON TYPE X-FIBER, BUT INDIV. VEINLETS VERY NARROW, WITH VEINLETS PARALLEL TO C.A.
AT 270-271, SHEARED, CORE BROKEN.

300 END OF HOLE.

HOLE : 70-11-5

DIAMOND DRILL LOG

TOWNSHIP	:	<u>WOLFESTOWN</u>	TOTAL DEPTH	:	<u>305</u>
RANGE	:	<u>1</u>	ORIENTATION	:	<u>N 72° 12' 70"</u>
LOT	:	<u>22</u>	ANGLE, COLLAR	:	<u>15°</u>
CLAIM NO	:	<u>283164-1</u>	ANGLE	:	
NEARLST	:	<u>9601 S.E. + 22801 S.W. TWP</u>		:	
LOT CORNER	:	<u>THE SOUTH LOT CORNER</u>		:	
GRID	:	<u>LINE 0211</u>	DATE STARTED	:	<u>MAY 20, 1970</u>
CO-ORDS	:		DATE FINISHED	:	<u>JUNE 3, 1970</u>
ELEVATION	:		HOLE SIZE	:	<u>A.C. / W.J.</u>
LOGGED BY	:	<u>P.C. HEARD</u>	CONTRACTOR	:	<u>ST. LAMBERT DIAMOND DRILLING CO.</u>

FOOTAGE
 FROM To

0 79

OVERBURDEN.

19 305

PERIDOTITE.

BLACK TO DARK GREEN, MASSIVE AND NON LAYERED, FAIRLY UNIFORM THROUGHOUT, MOD. SERPENTINIZED, F.G. WITH CONSPIC. PX.XLS. VISIBLE, ESPEC ABOVE 200', UNIFORM AND MODERATELY MAGNETIC. / ONE HIGHLY ALTERED GRANITIC ZONE @ 198-199 / MANY ZONES OF HIGHLY BROKEN PLUS SHEARED CORE. / PRESENCE OF SLIP PLANES ONLY MOD. IN LEANER ZONES BUT HIGH IN MORE MINERALIZED ZONES.

AVG. FIBER CONTENT 2-3% LARGELY OCCURRING ALONG VERY THIN IRREGULAR AND OFTEN CLOSELY SPACED THREAD VEINLETS. / SLIP PLANES. MOST OF THE FIBRE IS OF THE SLIP OR SLANT VARIETY. / SOME X-FIBER, VEINLETS UP TO 1/8", BUT NOT COMMON. / NATURE AND AMOUNT OF FIBER GIVES CORE A PALE GRAY TO WHITE TALCY APPEARANCE IN THE MORE HIGHLY MINERALIZED ZONES. / NARROW ZONES OF CLOSELY SPACED RIBBON-LIKE VEINLETS COMMON, BUT MANY OF THESE CONSPICUOUS NARROW VEINLETS CONTAIN ONLY INCIPIENT CROSS FIBER MINERALIZATION OF POOR QUALITY.

CORE RECOVERY 100% WITH FOLLOWING EXCEPTIONS.

105-111' 3' LOST.
 111-117' 2' LOST
 117-137' 5' LOST

79-82	6-8% FIBER AS NUMEROUS THIN VEINLETS AND RIBBONS OF SLIP AND INCIP. FIBER / SOME SURFACE ALTERATION.
82 - 96	1-2% FIBER, BOTH SLIP FIBER VEINLETS AND OCCASS X-FIBER VEINS TO 1/8"
96 - 155	HIGHLY SHEARED AND BROKEN ALONG SLIP PLANES. WHITISH IN COLOR, 3-4% FIBER, MOSTLY SLIP. AT 103, VEIN OF SLIP FIBER WITH FIBER 2" LONG / VERY BRITTLE. AT 105, VEIN OF SLIP FIBER WITH FIBER 1" LONG / VERY BRITTLE. OCCASS 1/16" VEINLET OR RIBBON ZONE OF CROSS FIBER BUT VERY POOR QUALITY.
155 - 198	1% FIBER THREE 1/16" VEINS PLUS THREE 1"-3" RIBBON ZONES CONTAINING POOR QUAL. X-FIBER AND SOME SLIP FIBER VEINLETS.
198 - 199	HIGHLY ALTERED AND LEACHED, WHITE GRANITIC ZONE.
199 - 207	1% FIBER, LIKE 155-198.
207 - 246	1-2% FIBER IN IRREGULAR, SHEARED, STOCKWORKS. / FIBER VERY SHORT AND VERY POOR QUALITY, ALMOST ALL OF THE SLIP VARIETY.
246 - 305	3-5% FIBER, LIKE ABOVE. SOME SLIP FIBER UP TO 1" LONG, BUT VERY HARSH. / PICROLITE OFTEN ASSOC. WITH FIBRE. CORE HIGHLY SHEARED AND BROKEN LOCALLY, ESPEC @ 254 AND 283-285.
305	END OF HOLE.

HOLE : 70-11-6

10

DIAMOND DRILL LOG

TOWNSHIP	: <u>WOLFESTOWN</u>	TOTAL DEPTH	: <u>393'</u>
RANGE	: <u>1</u>	ORIENTATION	: <u>AZ: 127°</u>
LOT	: <u>23</u>	ANGLE, COLLAR	: <u>45°</u>
CLAIM NO	: <u>283164-1</u>	ANGLE	: _____
NEARLST	: <u>410' S.F. AND 710' N.F. TO</u>		: _____
LOT CORNER	: <u>THE EAST LOT CORNER.</u>		: _____
GRID	: <u>LINE "B"</u>	DATE STARTED	: <u>JUNE 4, 1970.</u>
CO-ORDS	: _____	DATE FINISHED	: <u>JUNE 8, 1970.</u>
ELEVATION	: _____	HOLE SIZE	: <u>A.O.W.L. (CASING LEFT IN HOLE)</u>
LOGGED BY	: <u>R.C. BEARD</u>	CONTRACTOR	: <u>ST LAMBERT DIAMOND DRILLING CO.</u>

FOOTAGE
 FROM To

0 50
 50 393

OVERBURDEN.
PERIDOTITE.

BLACK AND MASSIVE, GENERALLY FINE GRAINED AND MOD. SERPENTINIZED, REMNANT PX.XLS. VARY FROM OBSCURE TO PROMINENT, BUT VISIBLE THROUGHOUT, FROM 112'-180', PALE GRAY PX.XLS. VERY PROMINENT AND CONSPICUOUS, GIVING CORE A VERY PALE MOTTLED OR SPOTTED APPEARANCE, TYPICALLY MOD. MAGNETIC, WITH SOME MTE. CONC. IN HI. MAG. ZONES, CORE ONLY MOD. SHEARED WITH SLIP PLANES, ONLY OCCASS HI. BROKEN ZONES.

AVG. FIBER CONTENT 3-5%, WITH BEST MINERALIZATION BELOW 210'. FIBER IS PREDOM GOOD QUALITY X-FIBER, IN VEINS 1/32"-1/8", WITH OCCASS VEINS UP TO 1/4". ALSO SOME SLIP AND SLANT FIBER PRESENT IN ZONES OF SLIP PLANES AND ZONES OF CLOSELY SPACED RIBBON TYPE VEINS, PIGROLITE ASSOC. WITH SOME FIBER VEINS, ALSO AS SEPARATE MASSIVE VEINS.

CORE LOSS 77-87 2' LOST
 95-105 8' LOST
 105-111 1' LOST

50 - 112 2% FIBRE, PERID IS BLACK AND (~~black~~) MASSIVE EXCEPT FOR 50-56 WHICH IS MOTTLED WITH PALE PX.XLS. MOD. SHEARED, WITH CONSPIC. SLIP PLANES COATED WITH WHITE SLIP FIBER, CORE IS LOCALLY BROKEN.

112 - 180 1 - 3% FIBER, PERID. IS VERY MOTTLED WITH PALE PX.XLS.

180 - 205 1-2% FIBER, BLACK MASSIVE PERID, WITH FEW VISIBLE PX.XLS. WIDELY SCATT CROSS FIBER. VEINS UP TO 1/16", AND TWO 5" ZONES, @ 184 AND 139, WHICH CONTAIN NUMEROUS VEINS OF CROSS FIBER, LITTLE SLIP FIBER PRESENT, CORE NOT CONSPICUOUSLY FRACTURED OR BROKEN.

205 - 393 3-5% FIBER, PERID. IS BLACK AND MASSIVE, WITH SOME VISIBLE PX.XLS. CORE IS MOD. SHEARED ALONG SLIP PLANES, WHILE MANY OF THE WIDER VEINS CONTAIN GOOD QUALITY CROSS FIBER, MOD. AMOUNTS OF SLIP FIBER AND SLANT FIBER ARE ALSO PRESENT IN VERY IRREGULAR, CLOSELY SPACED VEINLETS, (STOCKWORKS) ALONG SLIP PLANES.

SHEAR ZONE WITH CONSPIC SLIP FIBER @ 232-233'. ZONES OF RICH (15-35%) CLOSELY SPACED VEINS @ 248, 249 AND 253-256'.

393 END OF HOLE.

DIAMOND DRILL CORE LOG.

HOLE 70-11-6

FIBRE CONTENT

FOOTAGE	T.V	1/32	1/16	1/8	3/16	1/4	+1/4	SLIP, SLANT, T.V, etc	CORE LOSS	CORE ANGLE
50-55	7	8	1							
55-60	1									
60-65		4	2							
65-70	2	4	2							
70-75	20	9	2							
75-80	16	8	7					3% TV + SLIP FIB.		
80-85		15	3					1/2-1% TV SLIP (1% RIBBON VAIN. OF 1/2% FIB. 30-45°)		45°
85-90	5	4	3					< 1% TR SLIP FIB.	1'3"	
90-95	8	13	5					"	1'3"	
95-105	5	4						1/2-1% TV + SLIP	8'	45°
105-110	7	14	2					1% SLIP FIB.		
110-115	1		2					1/2-1% "		
115-120	5	5	2					"		
120-125		4	1					1/2% SLIP FIB		
125-130	12	3	3		1			1/2% " "		
130-135	10	1						"		
135-140	26	7	2					1% T.V. FIB.	6"	25°
140-145	4	3	4					SOME FIBER GROUND UP		
145-150	4	8	6	2				1/2% SLIP FIB.		
150-155		2	1	1				TR SLIP+TV		30°
155-160	9	16	4	2	1			1/2% T.V.		25-35°
160-165	17	7	3	2				"		30-65°
165-170	9	8						TR-1/2% TV		45°
170-175	18	7	3					1/2-1% T.V.		35-40°
175-180	10	4	5					TR-2% T.V.		20-40°
180-185	8	7	6	1				1% TV + SOME SLIP		30-45°
185-190	17	15	4	1				" "		
190-195	5	1						TR TV		
195-200	2	2	1					" + 8&IP		
200-205	6	2						TR-1/2% SLIP		
205-210	14	4	2	1				1% SLIP FIB.		35-40°
210-215	8	9	4	1				1-2% " "		30-40°
215-220	9	8	1	2				2% good qual. slip fib.		35-55°
220-225			1					TR SLIP		
225-230	4		1					TR SLIP		35°
230-235	1	3	1	1				3-3 1/2% good qual. slip fib.		
235-240	3	1	1					1-1/2% SLIP FIB	2'	
240-245	5	8	5	1				1/2-1% SLIP FIB		45°

DIAMOND DRILL CORE LOG.

HOLE 70-W-6

14-2

FIBRE CONTENT

FOOTAGE	TV	1/32	1/16	1/8	3/16	1/4	+1/4	SLIP, SLANT, TV, ETC	CORE LOSS	CORE ANGLE
245-250	7	7	3	1	1			+ 1 SECT. W/ 25% X-FIB ($\frac{1}{16}$ "- $\frac{1}{32}$ ")		
250-255	3	2	2					+ 2 " " 15% "		20°
255-260	1	11	2					+ 1 " " 8% FIB		30°
260-265	5	3						3% SLIP FIB. IN IRREG. ERATIC VEINS		
265-270								4% "		
270-275								3% "		
275-280								1-2% "		
280-285								2% "		
285-290								1% "		
290-295	8	2						1% "		
295-300		1	1					1% "		
300-305		1	1					1/2% "		
305-310	1	1	7	2				1 SECT. W/ 15% RIBBON + TV FIB		45-80°
310-315	11	7	1	2		2		1/2% T.V. FIB		50-60°
315-320	7	5	4		2			1% "		
320-325		3	1	1				+ 1 SECT. W/ 8% X-FIB ($\frac{1}{32}$ "-TV) + 2% SLIP		20-30°
325-330								4-6% SLIP + SHORT X-FIB < $\frac{1}{32}$ "		
330-335	1	2	2	3				2-3% TV + SLIP		
335-340			3					+ 1 SECT. W/ 7-9% RIBBON + 2-3% SLIP		
340-345		9						1-2% SLIP + TV		
345-350			1					+ 2 SECT. W/ 30-70% RIBBON + 4 SECT W/ 10% SLIP.		
350-355		3	1	1				3% SLIP + TV		
355-360		1						2-3% "		
360-365								" "		
365-370								TR TV		
370-375	2	2	3					1% TV + SLIP IN WELL DEFINED VEINS		
375-380								1/2-1% TV + SLIP		
380-385	3	2	2					" TV		
385-390		3	3			1		1% TV + SLIP		
390-393		2						" "		

E O H

HOLE : 70-11-7

81

DIAMOND DRILL LOG

TOWNSHIP	:	WOLFESTOWN	TOTAL DEPTH	:	408'
RANGE	:	1	ORIENTATION	:	12, 1270
LOT	:	24	ANGLE, COLLAR	:	450
CLAIM NO	:	283163-1	ANGLE	:	
NEAREST LOT CORNER	:	720' N.E. AND		:	
GRID	:	107' N.E. TO THE NORTH		:	
CO-ORDS	:	LOT CORNER	DATE STARTED	:	JUNE 26, 1970
ELEVATION	:	LINE "B"	DATE FINISHED	:	JULY 1, 1970
LOGGED BY	:	R.C. BEARD	HOLE SIZE	:	BQ w/L
			CONTRACTOR	:	ST. LAMBERT DIAMOND DRILLING CO.

FOOTAGE FROM TO

0 34
 34 408

OVERBURDEN
 PERIDOTITE w/ OCCASS. GRANITIC ZONE.

PERID. IS MASSIVE, DARK GRAY TO GREENISH GRAY, MOD. SERPENTINIZED, MATRIX V.F.G. w/ REMNANT PX XLS VISIBLE IN VARYING DEGREES THROUGHOUT FOOTAGE. MODERATELY AND UNIFORMLY MAGNETIC.

AVG. FIBRE CONTENT 2-3%. w/ FIBRE LARGELY OCCURRING IN VERY THIN IRREG. VEINLETS CONCENTRATED IN STOCKWORK ZONES. FIBRE IN THESE ZONES ARE A COMBINATION OF BOTH SLIP FIBRE AND CROSS FIBRE, ALTHO THE X FIBRE IS ALL VERY SHORT (<1/32"). THESE RICHER STOCKWORK ZONES ARE PALE GREY TO WHITE IN COLOR DUE TO THE FIBRE CONCENTRATIONS, AND ARE HIGHLY SLIP-PLANED & SERPENTINIZED. THE LEANER ZONES ARE DARKER WITH ONLY OCCASSIONAL SLIP PLANES. SOME WIDER CROSS-FIBRE VEINS (UP TO 1/8") ARE PRESENT BUT THESE ARE WIDELY SCATTERED AND USUALLY OCCUR IN THE LEANER, LESS SHATTERED ZONES.

- 34-58. 1% FIBRE IN SCATT. STOCKWORK ZONES, PREDOM. SLIP.
- 58-60 GRANITIC INTRUSIVE. FRESH MED. GR. FLD & QTZ, PALE PINK IN COLOR. SERP. CONTACTS ALTERED FOR 6" - 12"
- 60-114 3-4% FIBRE. PREDOM. SLIP & SLANT FIBRE OCCURRING IN STOCKWORK-TYPE, THIN IRREG. VEINLETS. ROCK HIGHLY SHEARED w/ SLIP PLANES. ONLY OCCASS 1" TO 4" ZONES OF DARKER, MASSIVE & LEAN PERIDOTITE.
- 114-123 GRANITIC INTRUSIVE. SIM TO 58 1/2 - 60, BUT SL. COARSER GRAINED AT CENTER. CONTACTS ALTERED.
- 123-151 1/2-1% FIBRE, MOSTLY CROSS-FIBRE AS SCATTERED VERY THIN (1/32"-1/16") INDIVIDUAL VEINS AND OCCASS. 1"-6" ZONES OF RIBBON VEINS. CORE DARK & MASSIVE APPEARING.
- 151-190 1-2% FIBRE. SIM TO 60-114. MOSTLY SLIP w/ OCCASS X-FIB VEINS. MANY MASSIVE, BARREN TO LEAN, DARK PERID ZONES 6"-18" WIDE. AT 155, A 6" ZONE OF GRANITE. AT 163, A 2' ZONE w/ SHEAR PARALLEL TO CORE AXIS.
- 190-237 2-4% FIB. VISUALLY APPEARS TO HAVE MORE BUT ALL VERY SHORT, MOST PROBABLY NOT RECOVERABLE. MOSTLY SLIP FIBRE IN STOCKWORKS. CORE CONSPIC VEINED & LT. COLORED. HIGHLY SHEARED, w/ SLIP PLANES. CORE LOC. HIGHLY BROKEN, CRUMBLY.
- 237-240 GRANITIC INTRUSIVE CONTAINING MUCH ABSORBED SERPENTINITE. SOME GREEN XLINE EPIDOTE (?) AND MICA.

HOLE 70-W-7

Pg 2

DIAMOND DRILL LOG

TOWNSHIP	:	_____	TOTAL DEPTH	:	_____
RANGE	:	_____	ORIENTATION	:	_____
LOT	:	_____	ANGLE, COLLAR	:	_____
CLAIM NO	:	_____	ANGLE	:	_____
NEAREST	:	_____		:	_____
LOT CORNER	:	_____		:	_____
GRID	:	_____	DATE STARTED	:	_____
CO-ORDS	:	_____	DATE FINISHED	:	_____
ELEVATION	:	_____	HOLE SIZE	:	_____
LOGGED BY	:	_____	CONTRACTOR	:	_____

FOOTAGE
 FROM TO

- 240-247 DARK BLACK TO REDDISH, SHEARED AND ALTERED PERID. SLIP PLANES ARE EXTREMELY SMOOTH & SHINY, PROBABLY DUE TO EFFECT OF ADJACENT INTRUSIVES.
 $\frac{1}{2}$ - 1% FIB. BOTH X-FIB & SLIP FIB. ALL VEINLETS VERY NARROW.
- 247-251 GRANITIC INTRUSIVE. FRESH QUARTZ & FLD. W/SOME ABSORBED SERP NEAR CONTACTS. CONTACTS IRREG & ALTERED OVER 6" - 12"
- 251-277 BLACK MASSIVE PERID. $\frac{1}{2}$ -1% FIB. MOSTLY AS DISTINCT, SCATTERED VEINS OF X-FIBRE. OCCASS STOCKWORK TYPE SLIP FIBER VEINLETS ALSO PRESENT, ESPEC AT BOTTOM, BUT NOT CONSPIC IN UPPER PART.
- 277-285 PERIDOTITE, HIGHLY ALTERED AND INTRUDED BY GRANITIC MATERIAL. MUCH OF THE PERID IS PALE COLORED & SILICIFIED. A DISTINCT, 6" ZONE OF QTZ-FLD @ 284. OCCASS FIB. VEINLET.
- 285-317 BLACK MASSIVE PERID. 1-2% FIBRE AS DISTINCTIVE X-FIBRE VEINLETS $\frac{1}{32}$ " TO $\frac{1}{8}$ " WIDE. TYPICALLY CONCENTRATED IN 1"-3" ZONES CONTAINING 20-50% FIBRE. C.A. OF FIBRE ZONES 200 - 400. SOME MINOR SLIP FIBRE & PICROLITE.
- 317-328 PALER, MORE ALTERED & SHEARED PERID. 3-4% FIBRE CONSISTING OF X-FIB, SLIP & PICROLITE.
- 328-345 SAME AS 285-317. 1% X-FIBRE.
- 345-380 SAME AS 317-328. 3-4% FIBRE, MOSTLY SLIP FIBRE IN STOCKWORKS. ROCK WELL SHEARED W/ SLIP PLANES.
- 380-408 MASSIVE BLK PERID, SAME AS 285-317, 1-2% FIBRE, MOSTLY DISTINCT X-FIB, VEINLETS.

ECH

DIAMOND DRILL CORE LOG.

HOLE 70-W-7

FIBRE CONTENT

FOOTAGE	T.V	1/32	1/16	1/8	3/16	1/4	+1/4	SLIP, SLANT, T.V, ETC.	CORE LOSS	CORE ANGLE
34-40		5	2					1% SLIP		20°
40-45	1	5	3					1/2-1% "		10-20°
45-50	1							1/2%		30-60°
50-55	7	9	3	1				1/2%		
55-58	5	2	1					1/2%		80°
58-60								GRANITE		
60-65	2	2	1	1				1/2-1%		45°
65-70	1	4						1/2-1%		45°
70-75								3% - MOSTLY SLIP		
75-80								2% " "		
80-85								3-4% SLIP Fib.		
85-90	1	2						3-4% MOSTLY SLIP		
90-95								3-5% BOTH SLIP & CROSS		
95-100								" " " "		
100-105								3-4% SLIP		
105-110	1							2-3% "		
110-114								1/2-1% "		
114-123								GRANITE		
123-125								1/2%		
125-130								1/2% BOTH CROSS + SLIP		
130-140	5	3	1					1/2% SLIP 1% RIBBON X		45-60°
140-150	10	1						" "		
150-155	3	2						1/2-1% RIBBON ORE (1/32")		30-80°
155-160								1/2% X + SL (8% RIBBON ZONE = 6-10%)		
160-165							1	3-4% SLIP SLANT + T.V.		
165-170								2-3% MOSTLY SLIP + T.V.		
170-175								1-2% "		
175-180								1% SLIP		
180-185	2	3						1/2-1% BOTH SLIP + T.V.		45°
185-190	2	1						1% " " "		
190-195								2-3% SLIP		
195-200								2-3% SLIP + T.V. (RIBBON)		
200-205	1	1						2-4% SLIP + T.V.		
205-210	3							1-2% T.V. + SLIP		
210-215		1						2-4% SLIP N/ OCCASS.		
215-220	2	3						" " "		

DIAMOND DRILL CORE LOG.

HOLE 7640-7
(SHEET 2)

FIBRE CONTENT

FOOTWE	TV	1/32	1/16	1/8	3/16	1/4	+1/4	SLIP, SLANT, TV, ETC	CORE LOSS	CORE ANGLE
220-225	2	2						2-4% SLIP + occas TV		
225-230	3	2	3					2-3% w/ SLIP MORE X THAN ABOVE		
230-235	11	2	3					1-3% SLIP + TV Fib.		
235-237		1						1-3% " "		
237-240								GRANITE INTRUSIVE		
240-245	3	1						1% TV (Ribbon) + SLIP		
245-247								1/2-1% TV + SLIP		
247-251								GRANITE INTRUSIVE		
251-255	3	8	4					TV SLIP Fib.		55-65°
255-260	8	3	3	1				1/2% TV + SLIP		"
260-265		4	3					"		45-60°
265-270	6	5	3		1			TR - 1/2% + TV + TR SLIP		
270-275	4	4	4	1				1/2% TV + TR SLIP		
275-277								2% SLIP + TV		
277-285								GRANITE + ALT. PERID		
285-290	6	5	1		1			1" w/ 20% X Fib. 1/2-1/8"		
290-295		1						1/2%		
295-300	1	1						1/2%		
300-305	10	1	1					1" w/ 15% X + SLIP Fib.		
305-310	4	4	1					3% SLIP Fib. 1/4" ZONE	25% X + SLIP	
310-315	5	5	5					1" w/ 30% X Fib up to 1/2"		20-30°
315-320								2% OF X SLIP + TV Fib		
320-325								2-3% X SLIP + TV Fib up to 3/8"		
325-330								3% " " " up to 1/2"		40-45°
330-335	2							LESS THAN 1% TV Fib		
335-340		1						" " "		
340-345								1% TV Fib.		
345-350								3 1/2% MOSTLY SLIP INREG TV		
350-355								" " "		
355-360								" " "		
360-365								3% MOSTLY SLIP INREG TV		
365-370								3 1/2% " " "		
370-375								" " " "		
375-380								" " " "		
380-385								3% " " "		
385-390								" " " "		
390-395			1					1% SLIP LESS THAN 1% TV		
395-408	15	3	3	1				" "		

HOLE: 69-A-1

H.K. PORTER CO. (CANADA) LTD.
THETFORD MINES, QUE.

DIAMOND DRILL LOG

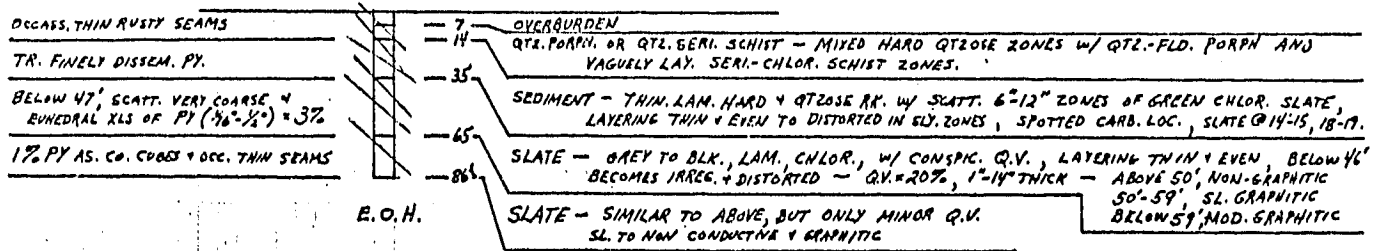
LOCATION : LOT 7, RANGE X
ASCOT TWP.
CLAIM # 271532-1
635' N. + 650' E. OF
S.W. LOT CORNER

TOTAL DEPTH : 86'ⁱ
DATE STARTED : MAY 26, 1969
DATE FINISHED : JUNE 3, 1969
DIP : VERTICAL
LOGGED BY : R.C. BEARD

MACHINE : WINNIE DRILL
HOLE SIZE : 1 EX
HOLE OPEN, W/ 1" PLASTIC HOSE

GRID CO-ORDINATES : 55+00 S. / 1+00 W.

ELEVATION : 23.14'



Ministère des Richesses Naturelles, Québec
 18 NOV 1970
 SERVICE DES GITES MINÉRAUX
 No GM- 26501

HOLE: 69-A-2

H.K. PORTER CO (CANADA) LTD.
THETFORD MINES, QUE.

DIAMOND DRILL LOG

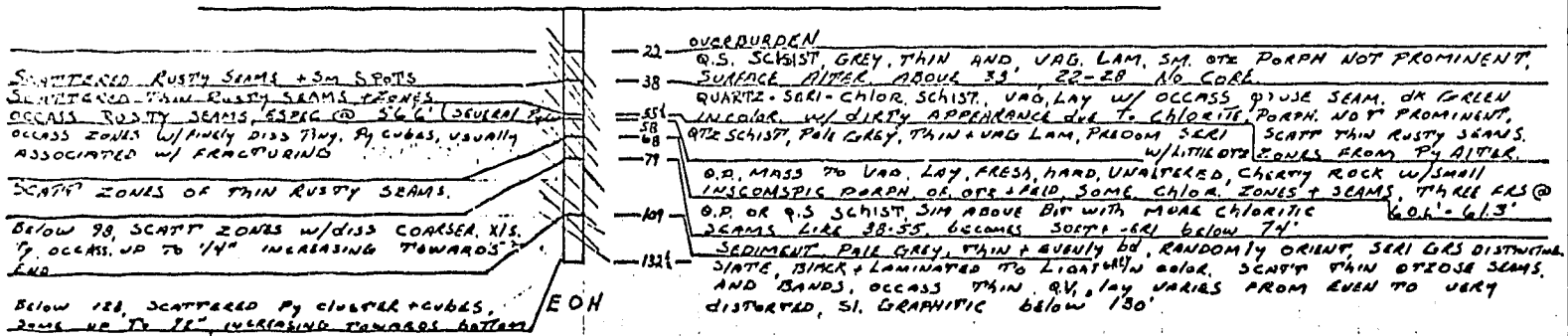
LOCATION: LOT 7, RANGE X
ASCOT TWP.
CLAIM # 271532-1
1200' N. + 800' E. OF
S.W. LOT CORNER

TOTAL DEPTH: 132 1/2'
DATE STARTED: JUNE 4, 1969
DATE FINISHED: JUNE 17, 1969
DIP: VERTICAL
LOGGED BY: R.C. BEARD

MACHINE: WINKIE DRILL
HOLE SIZE: 1EX
HOLE OPEN W/ 1" PLASTIC PIPE

GRID CO-ORDINATES: 52+00s / 1+00w

ELEVATION: 0



HOLE : 69-A-3

H.K. PORTER Co (CANADA) LTD.
THETFORD MINES, QUE

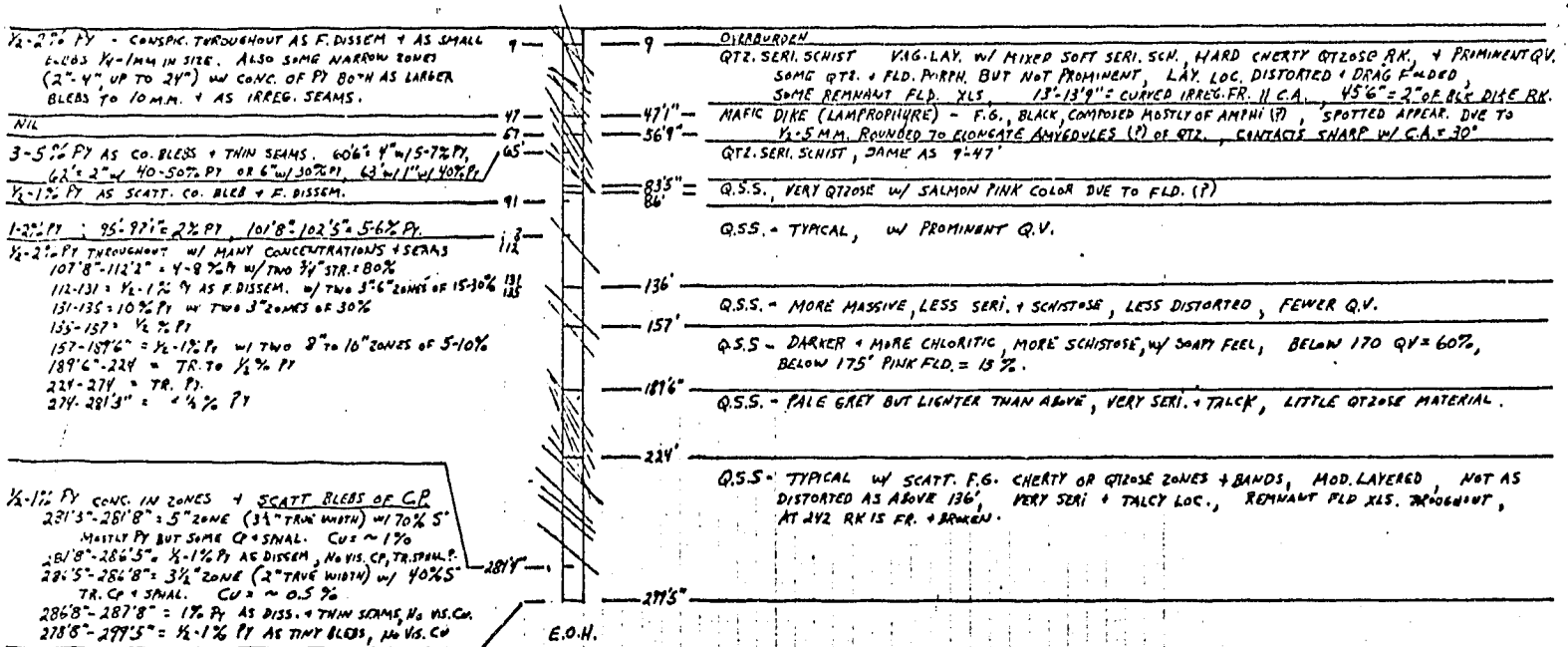
DIAMOND DRILL LOG

LOCATION : LOT 7, RANGE X
ASCOT TWP.
CLAIM # 271532-1
770' N. + 1150' E. OF
S.W. LOT CORNER

TOTAL DEPTH : 299' 8"
DATE STARTED : JUNE 18, 1969
DATE FINISHED : AUG. 5, 1969
DIP : 45°
BEARING : N 4° E
LOGGED BY : R.C. BEARD

MACHINE : WINKIE DRILL
HOLE SIZE : 1EX
HOLE OPEN W/ PLASTIC PIPE

GRID CO-ORDINATES : 54+45 S. / 4+30 E
ELEVATION : 24.60'



E.O.H.

HOLE: 69-A-7

H.K. PORTER Co (CANADA) LTD
THEFORD MINES, QUE.

DIAMOND DRILL LOG

LOCATION: LOT 7, RANGE X
ASCOT TW?
CLAIM # 271532-1
740' N. + 720' E. OF
S.W. LOT CORNER

TOTAL DEPTH: 190'
DATE STARTED: JULY 16, 1969
DATE FINISHED: JULY 19, 1969
DIP: VERTICAL
LOGGED BY: R.C. BEARD

CONTRACTOR: ST. LAMBERT'S D.D. Co.
HOLE SIZE: A.Q. W/L
HOLE OPEN W/ 1" PLASTIC PIPE

GRID CO-ORDINATES: 57+45s/0+52e.

ELEVATION: 84.67'

0-2' FINELY DISSEMINATED PY.	2' OVERBURDEN
2-12' J.E. DISS. PY	25' QZ SERICITE SCHIST, PALE GREY, VAG. + SCH, SMALL PORPH NOT PROMINENT. LAYERED 2-12' GROUND CORRE.
12-170' Py U.F. DISS. SCATT THIN SEAMS, ZONES AND AS OCC MED. XLS. 45'-47' - + 2%	34' Q.P. MASS. WHITE TO BLEUSH, HARD + DENSE, F.G., SMALL. PORPH. OF QZ.
7.5' FINELY DISSEMINATED PY THROUGHOUT.	50' AND FLD SL-MOD PROMINENT.
1-270' Py in seri SE MS, w/ BEST SECT @ 85-88' w/ 6.5% Py.	Q.P. w/ VAGUE SERICITE ZONES, SOME REMN XLS.
72-170' Py, MOSTLY AS MED SIZED B/BS + XLS.	71' Q.S. SCHIST, SAME 34-50, SERI w/ VAGUE, + IRREGULAR. LAY. SL DARKER. THAN ABOVE DUE TO DISSEMINATED PY, REMN XLS VISIBL.
1% Py, MOSTLY AS SM. B/BS + DISS IN MORE MASSIVE ZONES BUT ALSO AS COARSE XLS. IN SLATY ZONES.	100' Q.S. SCHIST TRANSITION ZONE. VAG. BUT THIN + EVENLY LAM, SIMILAR. TO ABOVE BUT MORE LAM, BECOMES SLATY TOWARDS BOTTOM w/ SLATY BANDS @ 124-126 SOME REMN XLS.
2-95% Py AS C. CUBES + XLS UP TO 1/2"	131' SEDIMENTS, MIXED LT COLORED, MASS. TO VAG. BAD O/BSE. ZONES + PALE GREY THIN BD SLATY ZONES, RANDOMLY ORIENT, SERI GR. DISTINCTIVE, SOME REMN XLS.
4-67% Py AS C. CUBES	154' SLATE PALE GRAY, THIN + EVENLY BD w/ CHOR. LAMELLAR INTERBED w/ SOME LT COLORED QZ-SER/ LAMELLAR, AT 170' AN 8" QZ-SER. ZONE.
	170' SLATE BLACK, VERY CHLORITIC, SL GRAPHITIC, BD VERY IRREGULAR. + DISS. SCATT THIN QZ SEAMS, OCCASS 1"-2" Q.Z.

E.O.H.

HOLE : 69-A-8

H.K. PORTER Co (CANADA) LTD.
THETFORD MINES, QUE

DIAMOND DRILL LOG

LOCATION : LOT 7, RANGE X
ASCOT TWP.
CLAIM # 271532-1
510' N. + 550' E. OF
S.W. LOT CORNER

TOTAL DEPTH : 174'
DATE STARTED : JULY 21, 1969
DATE FINISHED : JULY 22, 1969
DIP : VERTICAL
LOGGED BY : R.C. BEARD

CONTRACTOR : ST. LAMBERT P.D. Co.
HOLE SIZE : AQ W/L
HOLE OPEN W/ PLASTIC PIPE

GRID Co-ORDINATES : 59+20s/0+00
ELEVATION : 97.04'

11-22' 2-3% V.F., FINELY DISS., DUSTY PY W/TR. SPH. P
 22-36' 10% PY AS FINE DUSTY DISS. ALONG SCHIST PLANS
 25'7"-27'0" = 60% PY, 32'0"-32'4" = 50% PY
 33'3"-33'8" = 50% PY.

36'-41' 1% PY AS V.F. DUSTY DISS. + OCCASS. FR. FILLING
 41-85'8" TR. FIN. DISS. PY.

TR. DISSEM. PY.

TR. FIN. DISSEM. PY
 TR. PY

145-163 TR. PY
 163-174 2% PY AS CO. CUBES

11 OVERBURDEN

36 QUARTZ SERICITIC SCHIST, PALE GRAY VERY SERI, UAG IAY + SCHISTOSE, OCCASS Q.V. SOME REMN XLS. SURF. ALT? ABOVE 22'

86 QTZ PORPH MASS ANON-LAY, FRESH, HARD DENSE, V.F.G., BLEUISH IN COAR, SMALL QTZ FLD PORPH. MOD PROMINANT.

116 Q.S. SCHIST, PALE, GRAY UAG. IAY, SERI, SM. PORPH. NOT PROMINANT. REMN. XLS VISIBLE. IAY SI MORE AUCNT + DISTINCT BELOW 114

135 Q.S. SCHIST, SIM ABOVE BUT MORE QTZOSE W/MORE. Q.P. ZONES AND MORES Q.V. 124-131. = 70% Q.V.

145 SEDIMENTS, OR SERICITE SCHIST TRANSITION ZONE. VERY SERICITIC + SCH. W/ PROMINENT SCHISTOSITY OR LAYERING. DARKER THAN ABOVE W/ CHLOR, OCCASS LAYER. OR BD OF QTZOSE. MATERIAL, AT 143 1/2 - 145 1/2 EXTREMELY SCH + SERI. THIS UNIT IN THIS HOLE LESS TYPICALLY A SEDIMENT.

174 141 1/2 - 143 1/2 - 145 1/2 - 147 1/2 - 149 1/2 - 151 1/2 - 153 1/2 - 155 1/2 - 157 1/2 - 159 1/2 - 161 1/2 - 163 1/2 - 165 1/2 - 167 1/2 - 169 1/2 - 171 1/2 - 173 1/2

E.O.H.

SLATE, GRAY TO BLACK, WELL BD W/ THIN QTZOSE. SEAMS. Locally GRAPHITIC. SCARCE 1"-4" O.V. AT 145.-152'. 20% Q.V. 4" 15" WIDE.

HOLE: 69-A-9

H.K. PORTER CO (CANADA) LTD.
THETFORD MINES, ONT.

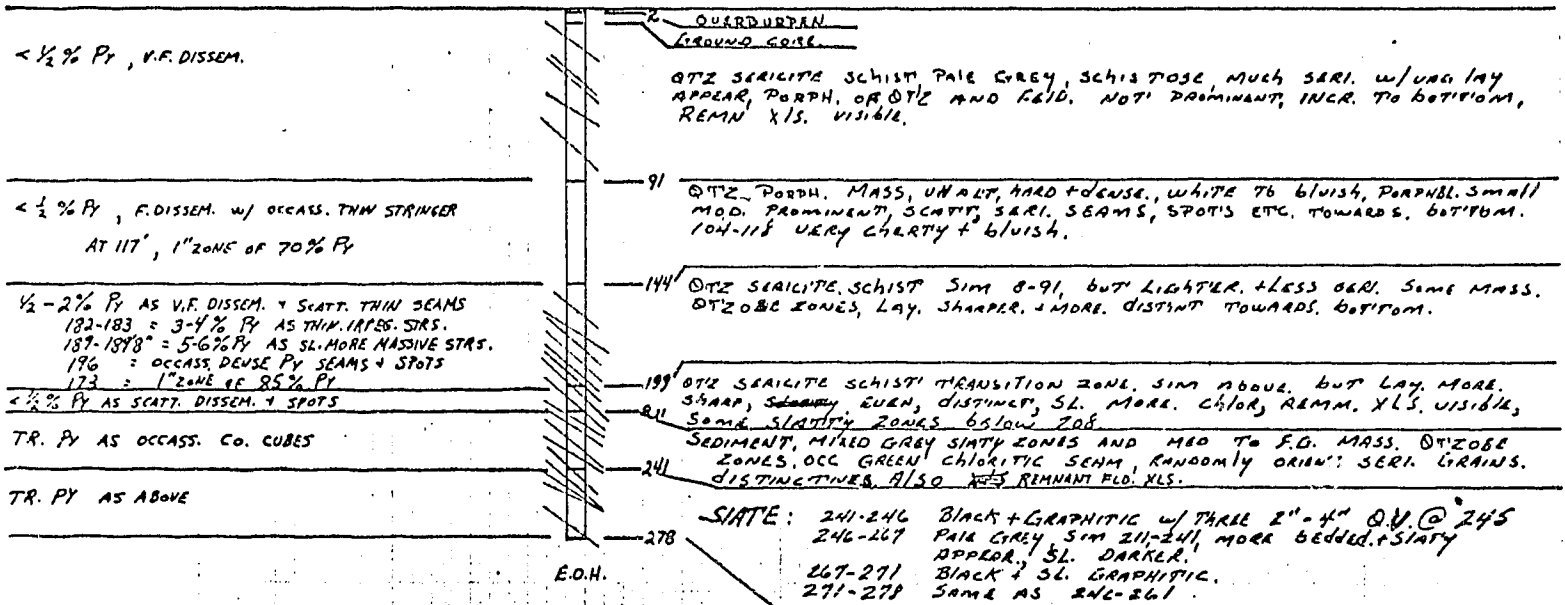
DIAMOND DRILL LOG

LOCATION: LOT 7, RANGE X
ASCOT TWP.
CLAIM # 271532-1
740' N. + 840' E. OF
S.W. LOT CORNER

TOTAL DEPTH: 278'
DATE STARTED: JULY 24, 1969
DATE FINISHED: JULY 26, 1969
DIP: VERTICAL
LOGGED BY: R.C. BEARD

CONTRACTOR: ST. LAMBERT D. D. CO
HOLE SIZE: AQ w/L
HOLE CAVED, NOT OPEN

GRID CO-ORDINATES: 56+00 S. / 1+50 E.
ELEVATION: 55.43'



HOLE : 69-A-10

H.K. PORTER Co (CANADA) LTD.
THETFORD MINES, QUE.

DIAMOND DRILL LOG

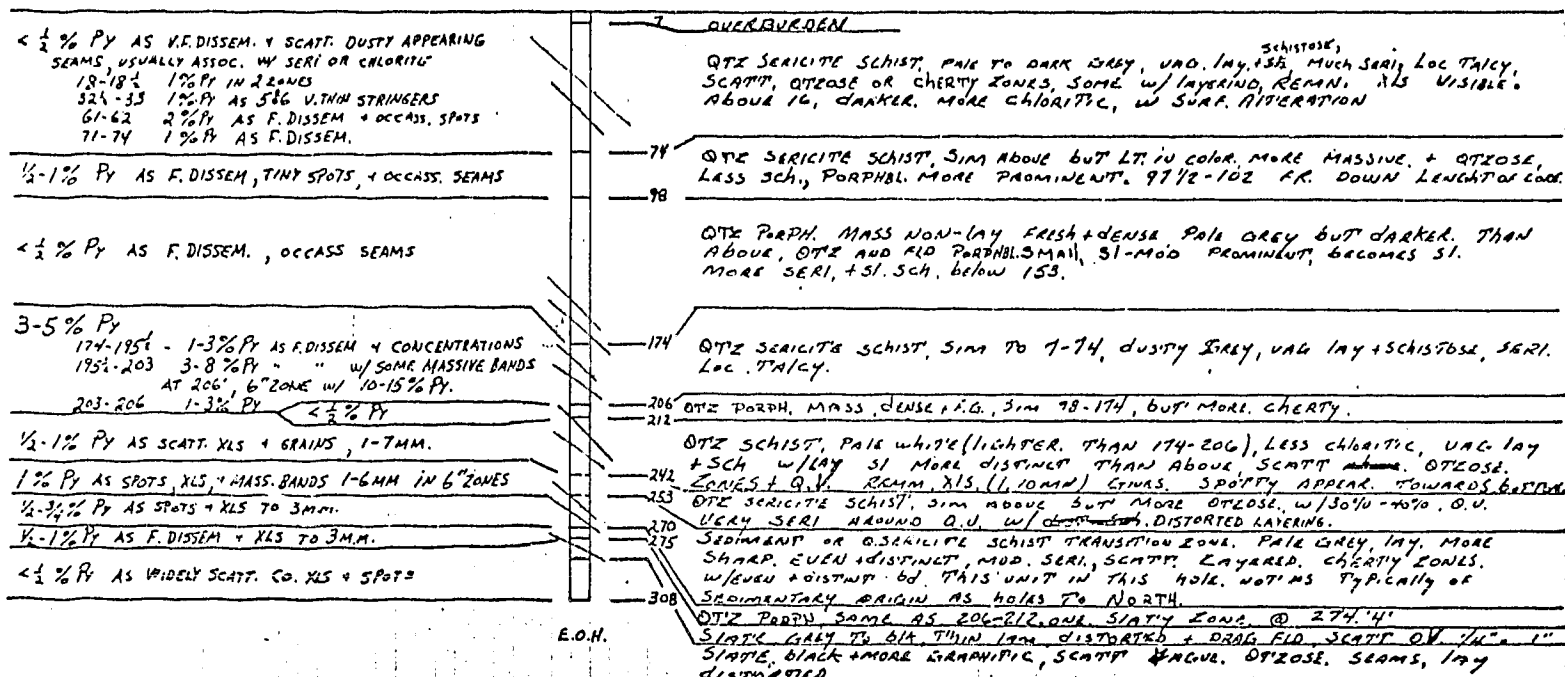
LOCATION : LOT 7, RANGE X
ASCOT TWP.
CLAIM # 271532-1
510' N. + 720' E. OF
S.W. LOT CORNER

TOTAL DEPTH : 308'
DATE STARTED : JULY 30, 1967
DATE FINISHED : AUG. 1, 1967
DIP : VERTICAL
LOGGED BY : R.C. BEARD

CONTRACTOR : ST. LAMBERT D. D Co.
HOLE SIZE : A Q W/L
PLASTIC PIPE IN HOLE, BUT BLOCKED

GRID CO-ORDINATES : 58+50 S. / 1+50 E.

ELEVATION : 90.74'



E.O.H.

DIAMOND DRILL LOG

LOCATION: LOT 7, RANGE X
ASCOT TWP.
CLAIM # 271532-1

600' N. + 1150' E. OF
S.W. LOT CORNER

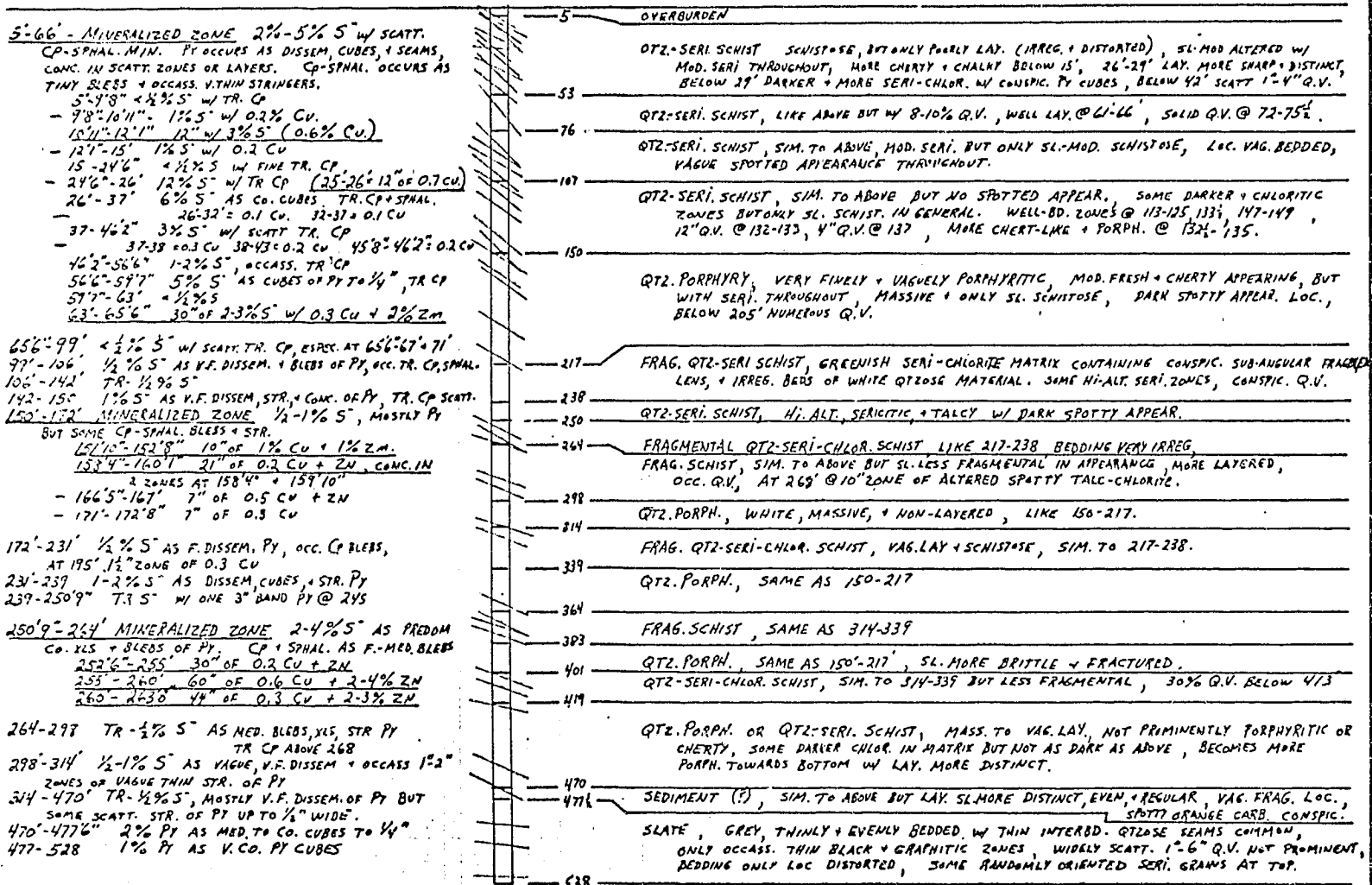
GRID CO-ORDINATES: 56+00 S / 5+00 E.

ELEVATION: 37.85'

TOTAL DEPTH : 528'
DATE STARTED : SEPT. 12, 1969
DATE FINISHED : SEPT. 19, 1969
DIP : COLLAR - VERTICAL
200' - 77°
400' - 69°
528' - 61°

CONTRACTOR: PORTELANCE DRILLING CO,
MONTREAL
HOLE SIZE: AQ W/L
HOLE OPEN W/ 3/4" PLASTIC HOSE,
CASING IN HOLE, BROKE OFF ~ 2' BELOW SURFACE

LOGGED BY: R.C. BEARD



NOTE: ALL METAL VALUES GIVEN ABOVE ARE VISUAL ESTIMATES.

E.O.H.

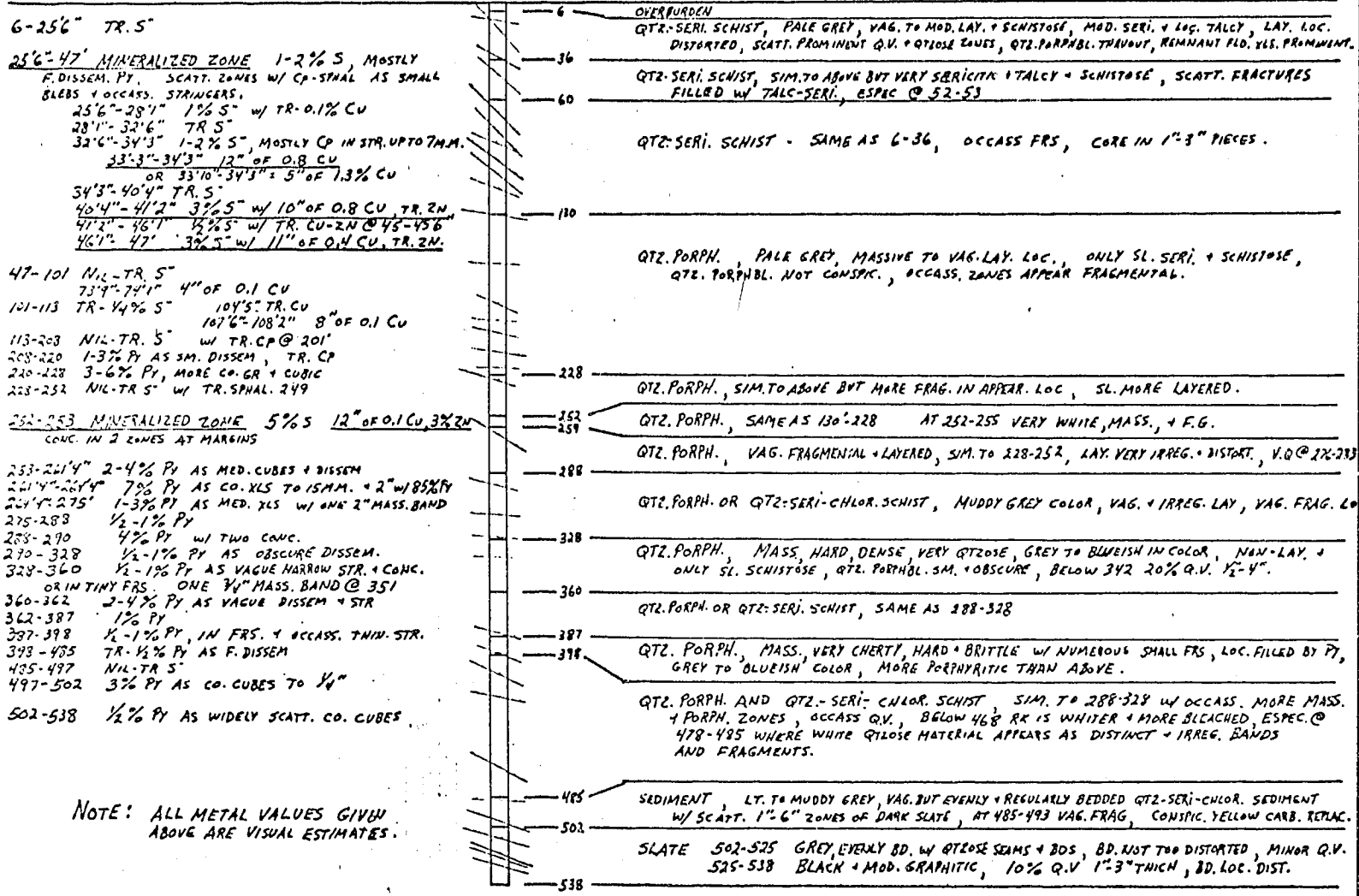
DIAMOND DRILL LOG

LOCATION: LOT 7, RANGE X
ASCOT TWP.
CLAIM #271532-1
370' N + 1030 E. OF
S.W. LOT CORNER

TOTAL DEPTH : 538'
DATE STARTED : SEPT. 30, 1969
DATE FINISHED : OCT. 10, 1969
DIP : COLLAR VERTICAL
170' - 81°
275' - 69°
400' - 64°
538' - 65°
LOGGED BY : R.C. BEARD

CONTRACTOR : PORTELANGE DRILLING Co
HOLE SIZE : A.G. W/L
HOLE OPEN W/ CAP ON CASING

GRID CO-ORDINATE : 58+45, / 5+00E
ELEVATION : 73.27'



NOTE: ALL METAL VALUES GIVEN ABOVE ARE VISUAL ESTIMATES.

NOTE: DUE TO MECHANICAL TROUBLE, ~38' OF CORE WAS GROUND + LOST BETWEEN 6' AND 180', AS FOLLOWS:

6'-36' - 39' OF CORE LOST	95'-179' 422" (35'2") OF CORE LOST
6'-7" 6" LOST	95-102" 6" LOST
7'-12" 9" "	102"-109" 1" "
12'-18" 12" "	109-113" 40" "
18'-24" 3" "	113-114" 0
24'-36" 19" "	114"-116" 0
	116"8"-126"6" 32" LOST
	126"6"-135"6" 80" "
	135"6"-148" 76" "
	143"-153" 108" "
	153"-153"6" 22" "
	155"6"-171" 57" "

36'-95' NO CORE MISSING

DIAMOND DRILL LOG

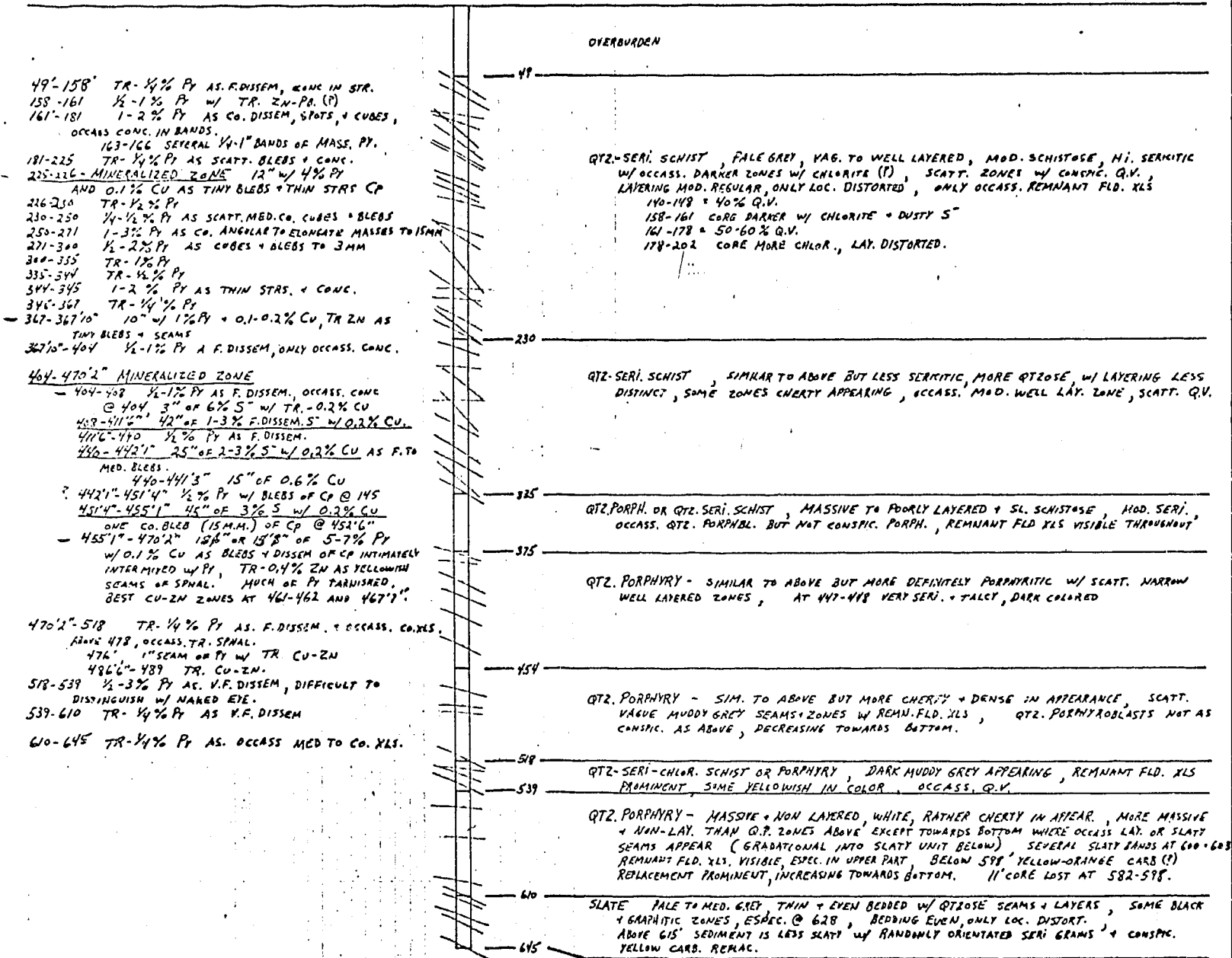
LOCATION: LOT 7, RANGE X
ASCOT TWP.
CLAIM # 271532-1
650' N. + 1390' E. OF
S.W. LOT CORNER

TOTAL DEPTH: 645'
DATE STARTED: OCT. 15, 1967
DATE FINISHED: NOV. 17, 1967
DIP: COLLAR - VERTICAL
100' - 86°
200' - 76°
350' - ?
500' - 60°
650' - 57°
LOGGED BY: R.C. BEARD

CONTRACTOR: PORTELANCE DRILLING CO.
HOLE SIZE: AQ W/L
HOLE OPEN W/ PLASTIC HOSE

GRID CO-ORDINATES: 54+50S/7+00E.

ELEVATION: 40.99'



E.O.H.

NOTE: ALL METAL VALUES GIVEN ABOVE
ARE VISUAL ESTIMATES.

DIAMOND DRILLING ASSAYS

ASCOT TWP., $\bar{R}\bar{X}$, LOT 7

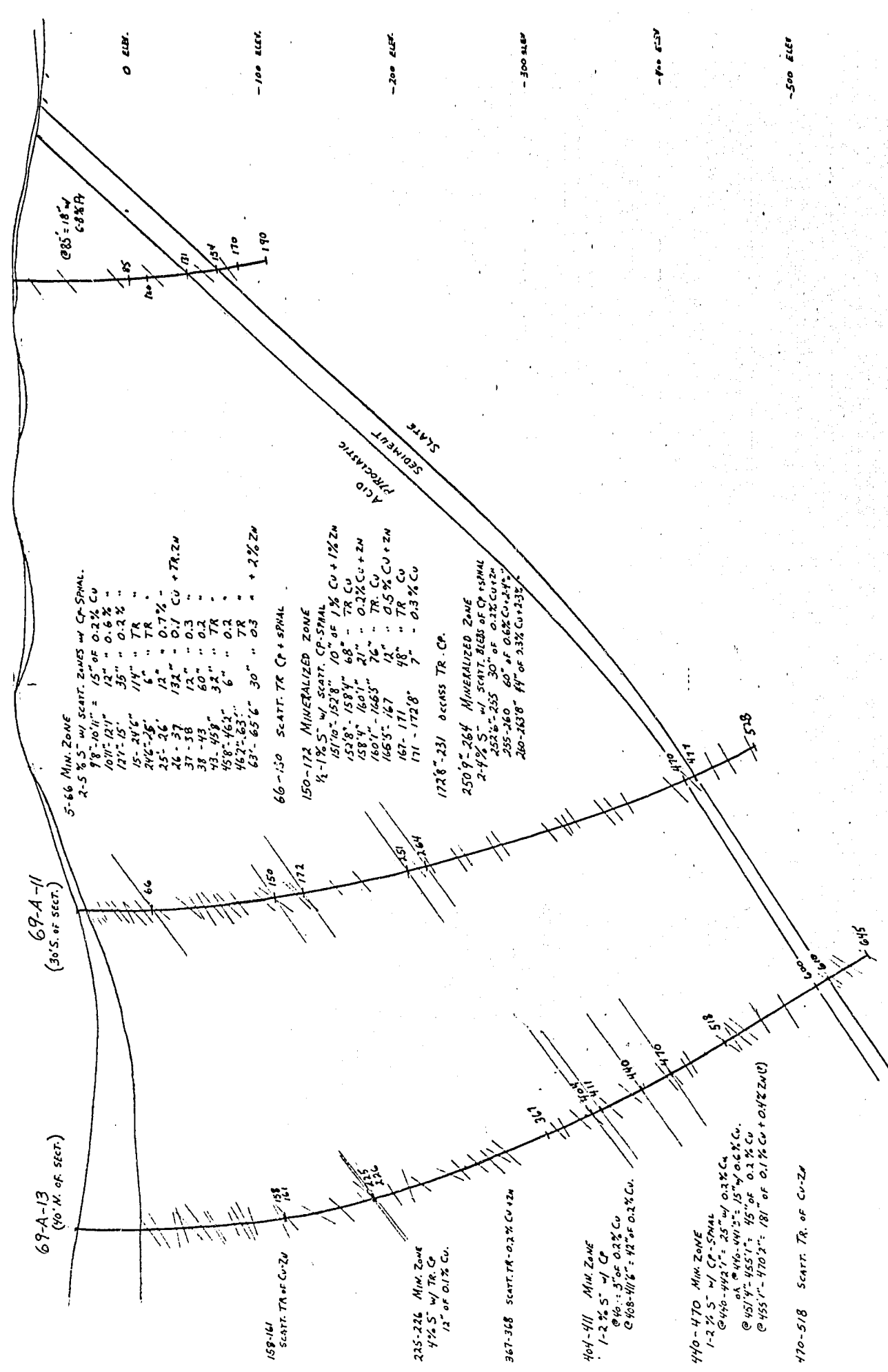
HOLE	FOOTAGE	SAMPLE WIDTH	VISUAL ESTIMATE OF MINERALIZATION	LAB SAMPLE#	ASSAY				
					CU	ZN	AG (oz)	PB	AU (oz)
69-A-11	9'8" - 10'11"	15"	0.6% CU	67	0.07	0.79	0.065	0.04	0.000
	10'11" - 12'1"	14"		46	0.44	2.02	0.150	-	-
	12'1" - 15'0"	35"		68	0.01	0.76	0.005	0.03	0.000
	25'0" - 26'0"	12"	0.7% CU	47	0.30	2.39	0.130	-	-
	26'0" - 32'0"	72"		48	0.14	0.90	0.067	0.03	TR
	32'0" - 37'0"	60"		69	0.12	0.89	0.068	0.03	0.000
	37'0" - 43'0"	72"		70	0.16	1.63	0.142	0.01	0.001
	43'0" - 46'2"	38"		71	0.13	0.87	0.167	0.02	0.000
	63'0" - 65'6"	30"		0.3 CU + 2% ZN	52A	0.12	0.13	0.039	-
	151'10" - 152'8"	10"	1% CU + 1% ZN	52B	0.89	0.77	1.007	0.02	0.017
	158'4" - 160'1"	21"	0.2% CU + ZN	53	0.47	1.32	0.593	-	-
	166'5" - 167'2"	9"		72	0.25	0.21	0.301	0.03	0.000
	167'2" - 172'8"	66"		73	0.01	0.03	0.027	0.01	0.000
	250'9" - 252'6"	21"		74	0.05	0.73	0.045	0.01	0.000
	252'6" - 255'0"	30"	0.2% CU + ZN	54	0.20	1.66	0.084	-	-
255'0" - 261'0"	60"	0.6% CU + 2-4% ZN	55	0.41	2.79	0.374	-	-	
260'0" - 263'8"	44"	0.3% CU + 2-3% ZN	56	0.22	1.97	1.255	-	-	
69-A-12	33'5" - 34'3"	12"	0.8% CU	63	0.93	0.22	0.398	-	-
	40'4" - 41'2"	10"	0.8% CU + TR ZN	62	0.51	0.26	0.163	0.02	0.000
	46'1" - 47'0"	11"	0.4% CU + TR ZN	61	0.46	1.65	0.104	-	-
	252'0" - 253'0"	12"	0.1% CU + 3% ZN	60	0.06	0.56	0.371	-	-
69-A-13	224'6" - 226'0"	18"		75	0.26	1.06	0.118	0.05	TR
	367'2" - 368'3"	13"		76	0.15	0.05	0.555	0.01	TR
	404'0" - 408'0"	48"		77	0.03	0.12	0.010	0.02	0.000
	408'0" - 411'6"	42"	0.2% CU	59	0.20	0.05	0.027	0.01	0.000
	440'0" - 442'1"	25"	0.2% CU	57	0.24	0.79	0.220	-	-
	451'4" - 455'1"	45"	0.2% CU	58	0.21	0.13	0.016	-	-
	459'0" - 460'6"	18"		78	0.01	0.22	0.013	0.03	0.000
	466'0" - 470'6"	54"		79	0.10	0.97	0.101	0.01	0.000
473'10" - 477'10"	48"		80	0.10	1.49	0.246	0.13	0.003	

BASE LINE

69-A-7

69-A-11
(30 S. OF SECT.)

69-A-13
(40 N. OF SECT.)



5-66 MIN. ZONE
2-5% S w/ SCATT. ZONES w/ CP-SPHAL.
98"-1011" = 15" OF 0.2% CU
107"-121" 12" " 0.6% " "
127"-15" 35" " 0.2% " "
15-246" 114" " TR " "
246"-25" 6" " TR " "
25-26" 12" " 0.7% " "
26-37 132" - 0.1% CU + TR.ZN
37-38 12" " 0.3 " "
38-43 60" " 0.2 " "
43-459" 32" " TR " "
458"-463" 6" " 0.2 " "
462"-63" 6" " TR " "
63"-65'6" 30" " 0.3 " + 2% ZN

66-150 SCATT. TR CP + SPHAL

150-172 MINERALIZED ZONE
1/4-1% S w/ SCATT. CP-SPHAL
151'10"-152'8" 10" OF 1% CU + 1% ZN
152'8"-158'4" 68" - TR CU
158'4"-160'1" 21" - 0.2% CU + ZN
160'1"-165'5" 76" - TR CU
165'5"-167" 12" - 0.5% CU + ZN
167-171 14" - TR CU
171-172'8" 7" - 0.3% CU

172'8"-231' across TR. CP.
250'7"-264' MINERALIZED ZONE
2-4% S w/ SCATT. BLEBS OF CP + SPHAL
252'6"-255' 30" OF 0.2% CU + ZN
255-260 60" OF 0.6% CU + 2% ZN
260-263'0" 44" OF 0.3% CU + 2% ZN

159-161
SCATT. TR OF CU-ZN

225-226 MIN. ZONE
4% S w/ TR. CP
1/3 OF 0.1% CU.

367-368 SCATT. TR-0.2% CU + ZN

404-411 MIN. ZONE
1-2% S w/ CP
@ 404-411' = 5" OF 0.2% CU
@ 408-411' = 42" OF 0.2% CU.

440-470 MIN. ZONE
1-2% S w/ CP-SPHAL
@ 440-442' = 25" w/ 0.2% CU
@ 440-441' = 15" w/ 0.2% CU.
@ 451'4"-455'1" = 45" OF 0.2% CU
@ 455'1"-470'2" = 181" OF 0.1% CU + 0.4% ZN(U)

470-518 SCATT. TR. OF CU-ZN

O ELEV.

-100 ELEV.

-200 ELEV.

-300 ELEV.

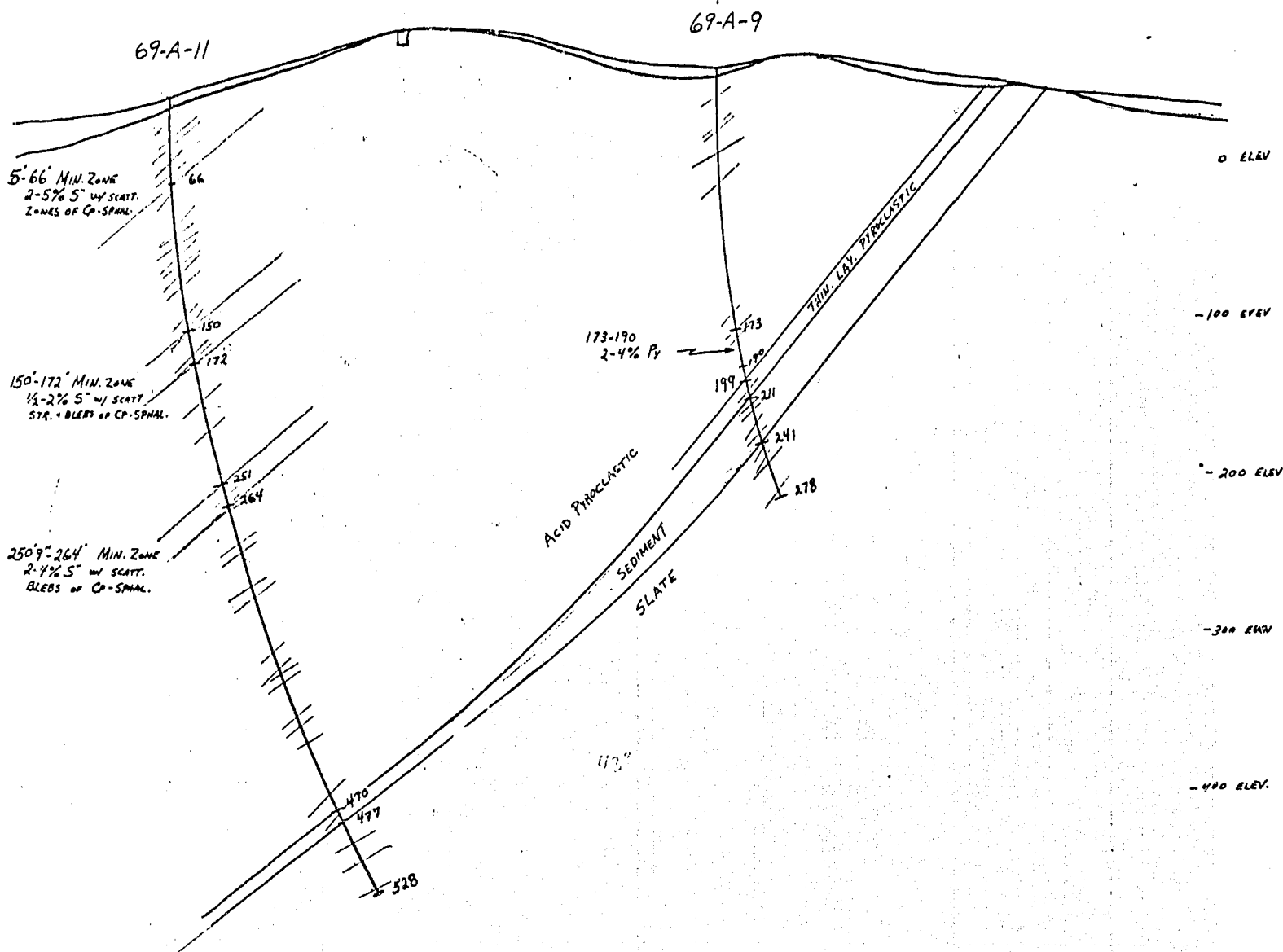
-400 ELEV.

-500 ELEV.

ACID
PYROCLASTIC
SCARP

SE 4E 3E 2E 1E 0 1W

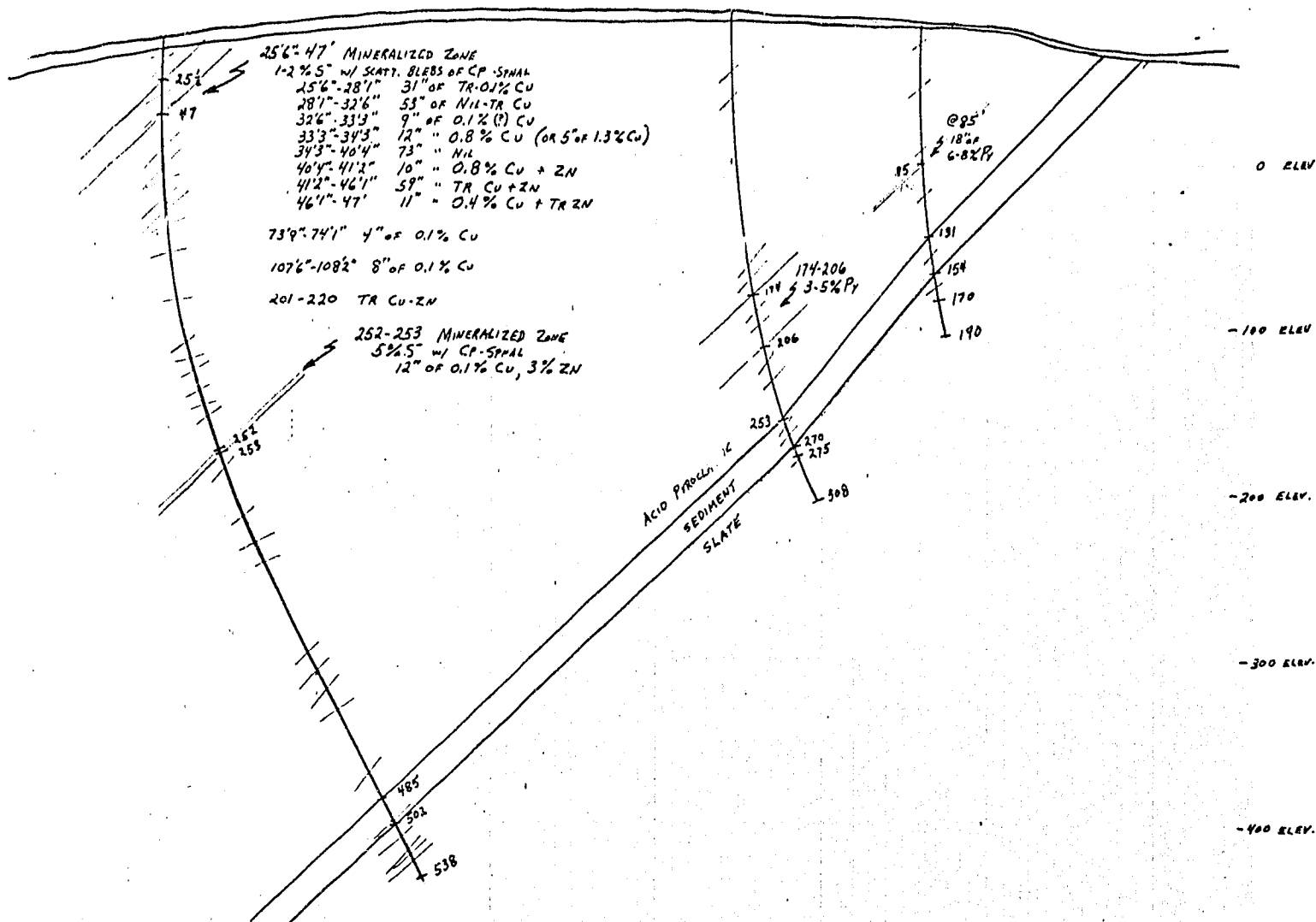
TEST PIT.
(ELEV. ESTIM.)



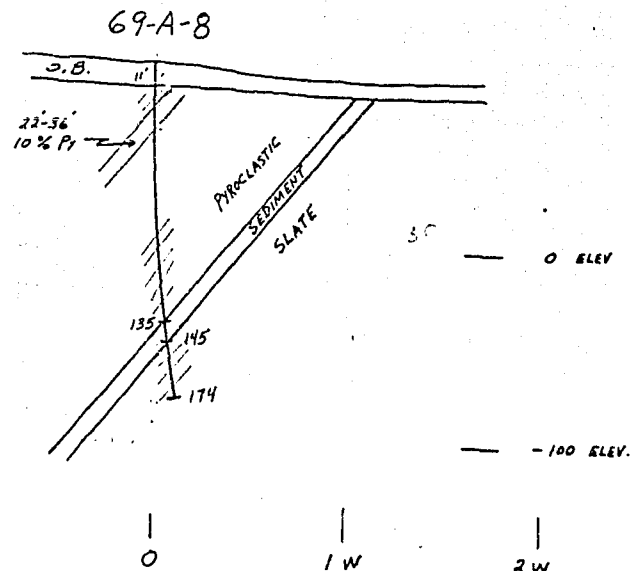
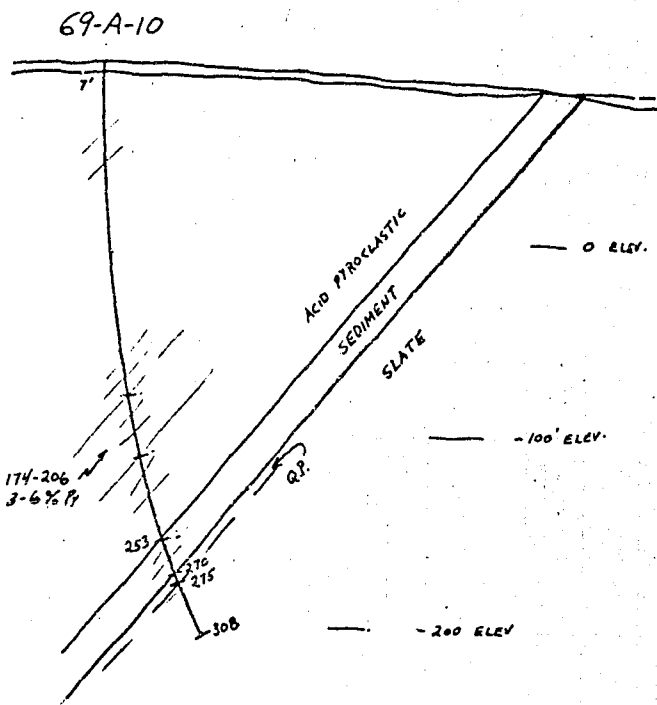
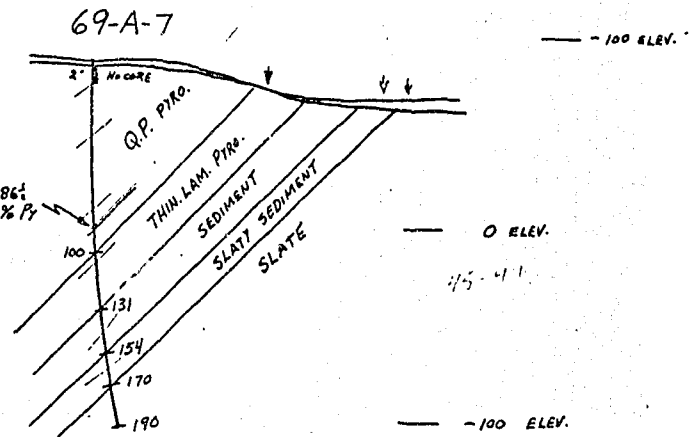
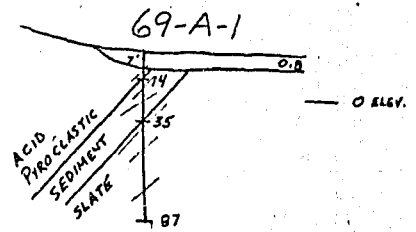
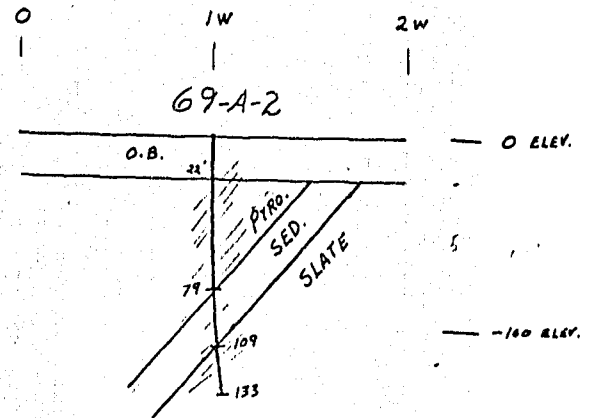
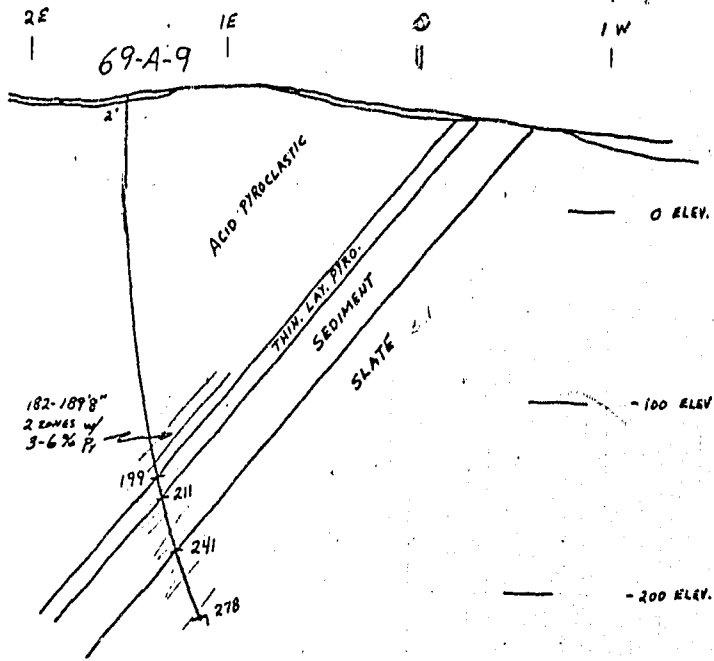
69-A-12

69-A-10
(40' S. OF SECT.)

69-A-7
(50' N. OF SECT.)



ASCOT X
DRILL SECTIONS

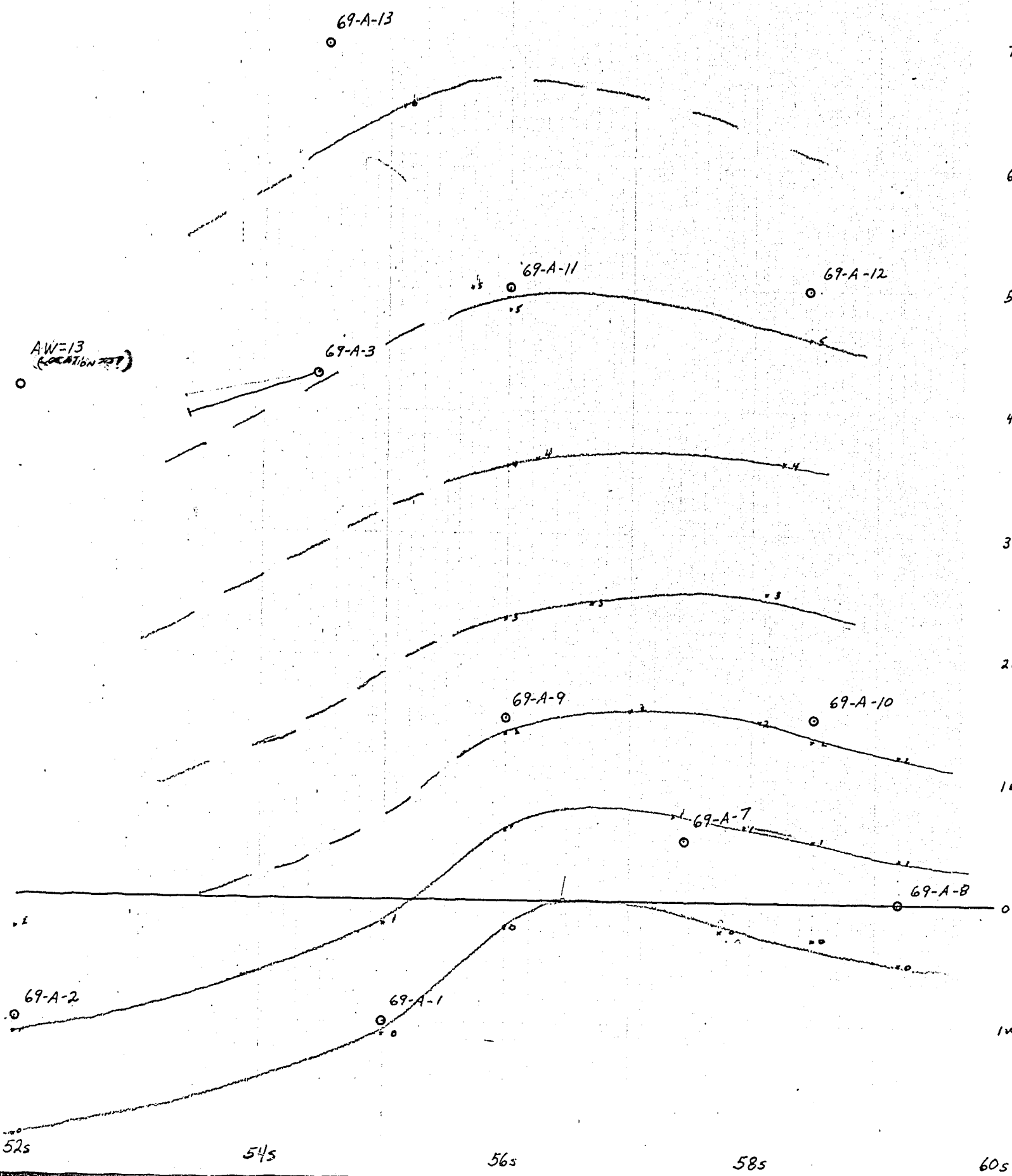


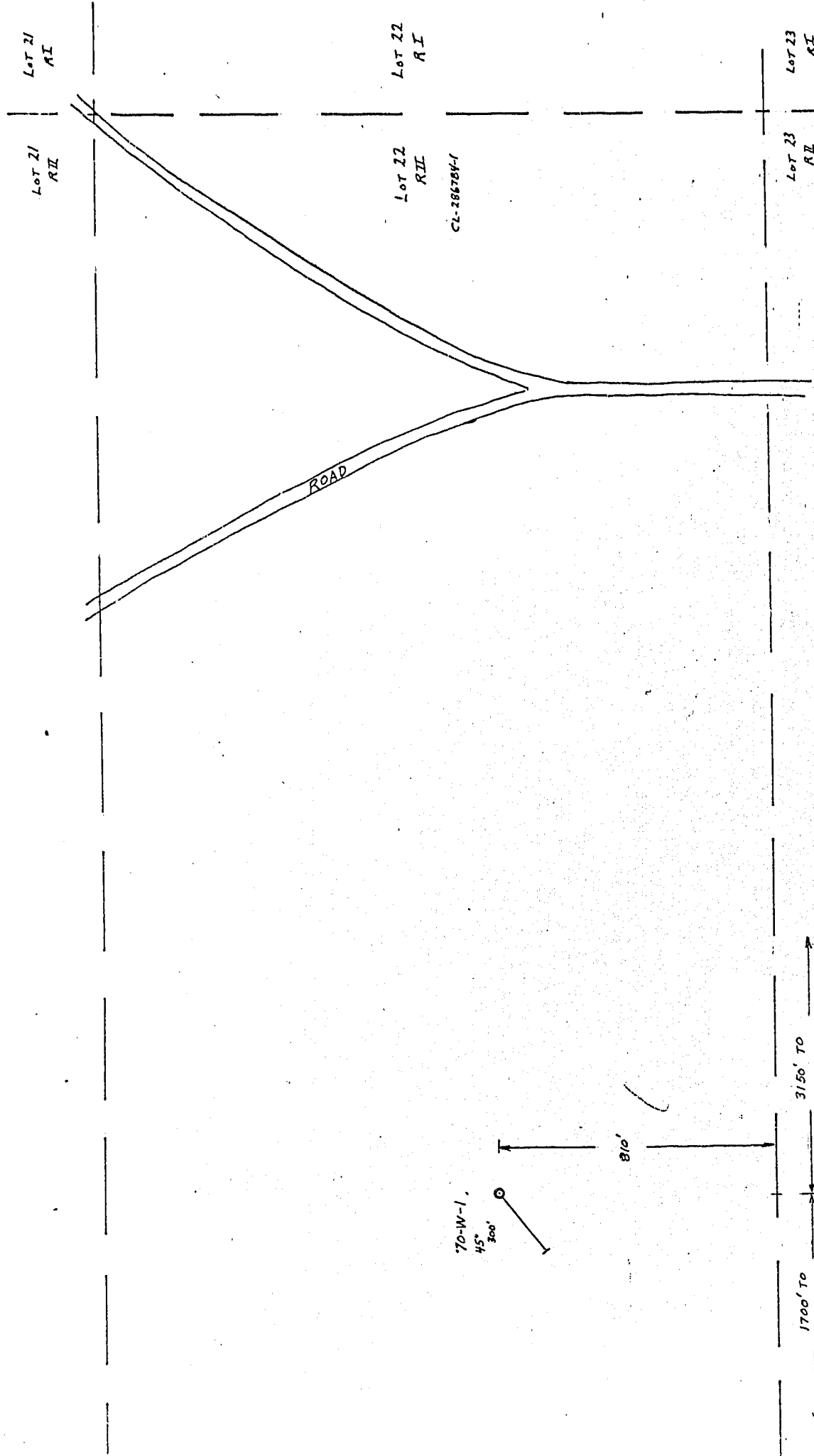
2E | 1E | 0 | 1W

0 | 1W | 2W

ASCOT X
STRUCTURAL
CONTOUR MAP
(TOP OF SLATE)

1" = 100'





H.K. PORTER CO (CANADA) LTD.
 DD.H LOCATION MAP
 Lot 22, RII
 WOLFESTOWN TWP.
 1" = 400'
 SEPT. 1970

70-W-1,
 45°
 300'

810'

3150' TO
 N.E. CORNER

1700' TO
 S.E. CORNER

IRELAND TWP
WOLFESTOWN TWP

Lot 23
RI

CL 283164-1

70-W-6
45°
393'

70-W-7
45°

70-W-3
45°

70-W-2
45°
307'

70-W-5
45°
305'

70-W-4
45°
300'

Lot 15
RI

CL 260217-2

70-W-9

70-W-8
45°
234'
(cont'n 0.6)



H.K. PORTER CO. (CANADA) LTD.
DDH LOCATION MAP
Lots 23, 24, 25, RI
WOLFESTOWN TWP.
1" = 400'

SEPT. 1970