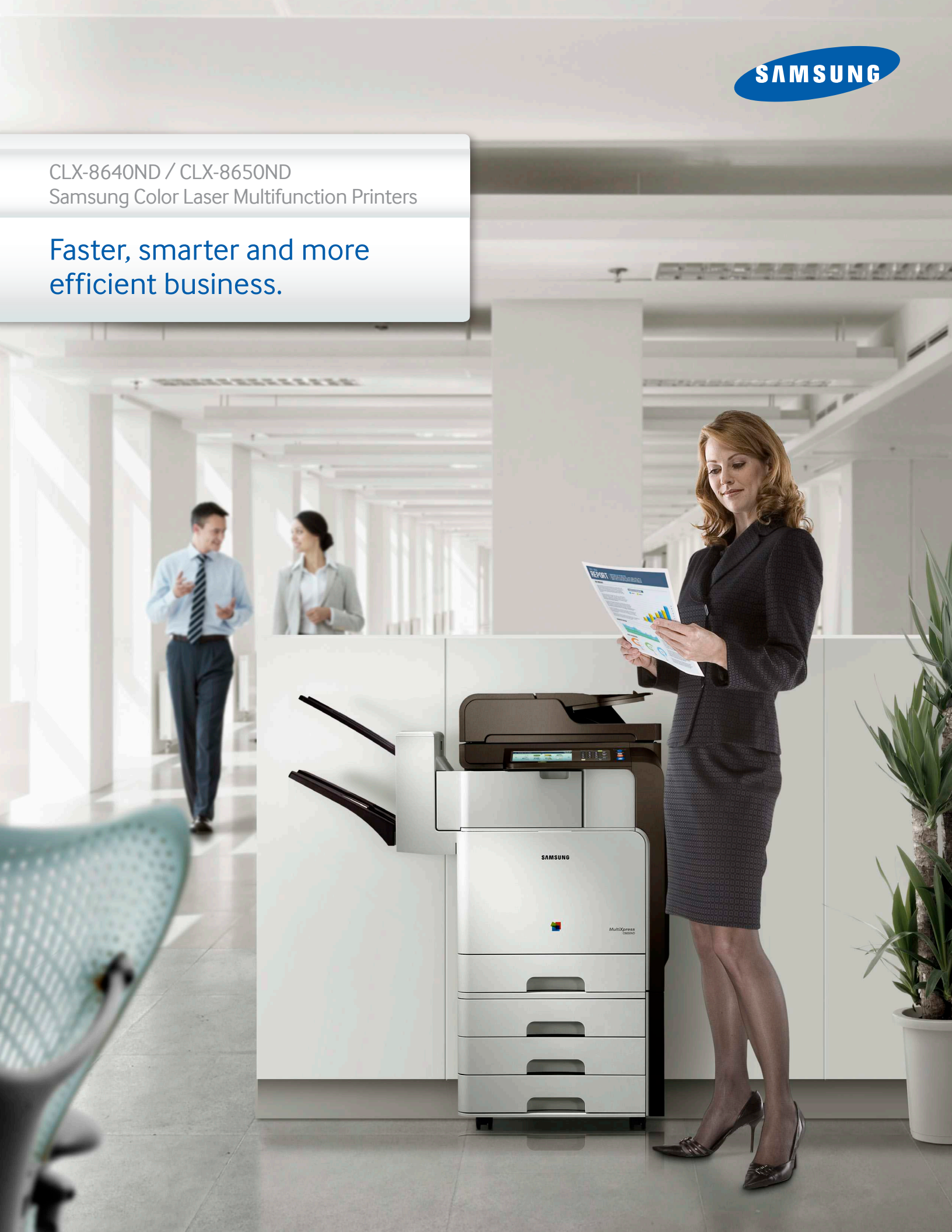




CLX-8640ND / CLX-8650ND  
Samsung Color Laser Multifunction Printers

Faster, smarter and more  
efficient business.



## Samsung CLX-8640ND and CLX-8650ND Color Laser MFPs



There are only so many hours in the day. And the Samsung CLX-8640ND and CLX-8650ND color laser MFPs help you and your team get the very most out of each and every one of them. With professional features designed to simplify and increase workflow efficiencies, along with stunning color output, these high-volume, reliable business machines are the expert answers to every workgroup's needs.



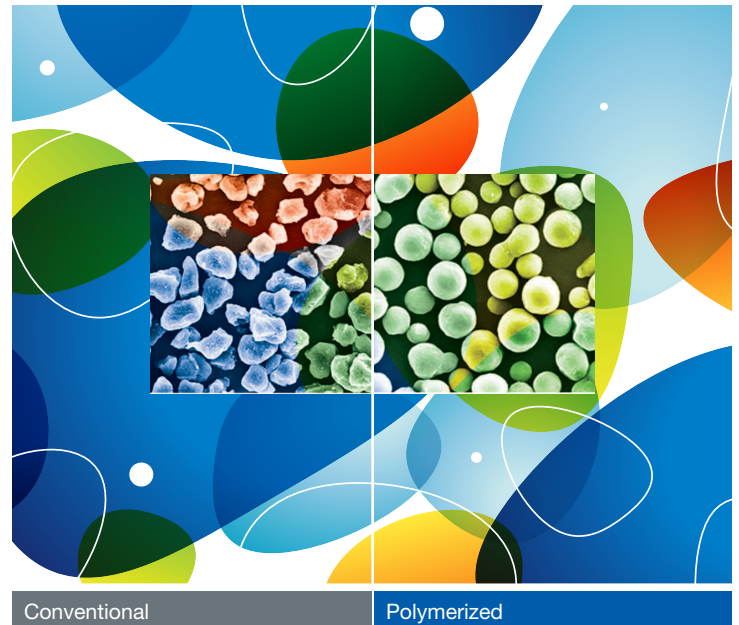
## Samsung raises the bar on professional quality output.

Whether your audience is internal or external, it's important to always represent yourself as professionally as possible. Samsung CLX-8640ND and CLX-8650ND MFPs provide advanced features and deliver professional results that allow you to get more productivity from your workday.

### Superior Samsung Technology Delivers Sharp, Colorful Prints

Samsung's exclusive Rendering Engine for Clean Page (ReCP) technology automatically sharpens both graphics and text for professional results. Color is trapped precisely for crisp images, and the images are de-screened to look cleaner and more natural.

Conventional	ReCP	
		Composite Color Reduction
		De-screening
		Edge Enhancement
		Color Trapping



### Superior, Polymerized Toner

Samsung's polymerized toner features smaller and more uniform particles than conventional toner for crisper lines and more vivid colors. Its higher wax content adds a rich glossiness to images while preventing fading. And its lower fusing temperature eliminates paper curling while saving energy.



### XOA (eXtensible Open Architecture) Platform

The Samsung CLX-8640ND and CLX-8650ND MFPs connect to your line-of-business applications through the unique eXtensible Open Architecture (XOA) platform. Based on open standards, XOA allows third-party vendors to create embedded applications that multiply MFP capabilities in order to improve business processes.

### Powerful Processing

A fully integrated 1GHz Dual Core processor increases office productivity dramatically. Large print and copy jobs are easily handled, as well as scan throughput. Every task is completed up to 1.5 times quicker, so your team can spend more time producing and less time waiting.



### High File Compression

Samsung's Mixed Raster Content (MRC) technology significantly compresses scanned files, with no reduction in quality. Smaller file size means you can save storage space, and send scanned files more easily.



## Simplicity plus efficiency equals productivity.

The simpler and more intuitive your MFP is to use, the faster even the newest members of your team can work. Every feature of the Samsung CLX-8640ND and CLX-8650ND MFPs is designed for efficient and productive operation.

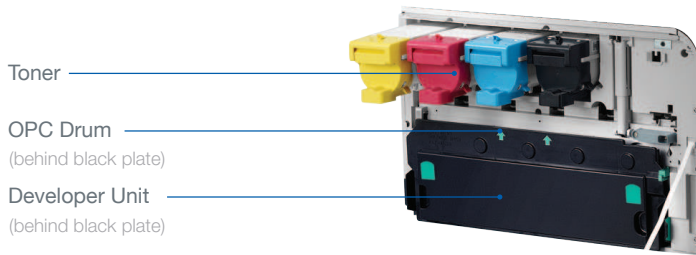
### Quick and Easy Setup

Samsung CLX-8640ND and CLX-8650ND MFPs install easily and get to work quickly. Setup is simple and fast with everything you need, including an installed single pass duplexing Automatic Document Feeder (ADF).

### Easy, Economical and Exceptional Toner and Drum

Separate toners and OPC drums mean you don't have to change both when only one part wears out. Additionally, OPC drums can be used for any color, so you can keep a smaller inventory on hand. The developer unit provides a yield of 300,000 pages\* for even further reduced maintenance.

\*Declared cartridge yield value in accordance with ISO/IEC targets.



### Single Pass Duplexing Saves Time

A dual scan document feeder automatically scans both sides of a document at once to scan stacks of documents faster.

### Space Saver

Compact, streamlined designs mean the CLX-8640ND and CLX-8650ND MFPs occupy very little floor space. The space-saving 350-sheet 2-bin finisher and internal card reader add utility without adding size.



### Free Samsung Mobile Print App

Lets you print, scan and fax to/from mobile devices. Just connect to your MFP wirelessly and print, scan or fax without the need to install any drivers.\*

\*Note: Wireless Access Point (AP) is required



The Samsung Easy Mobile Print App earned the 2012 Outstanding Achievement Award from Buyers Lab, Inc.

## Samsung offers in-house and select partner solutions.

Samsung offers MPS, mobile, security and productivity solutions. These solutions allow you to create a more efficient and secure workgroup.

	<b>Document Management/Workflow</b> <ul style="list-style-type: none"> <li>• DPD - GoldFax<sup>Δ</sup></li> <li>• Drive<sup>Δ</sup></li> <li>• Intellinetics<sup>Δ</sup></li> <li>• MaxxVault<sup>Δ</sup></li> <li>• Perceptive<sup>Δ</sup></li> <li>• Prism<sup>Δ</sup></li> <li>• SmarThru3 (Workflow)*</li> </ul>
	<b>Managed Print Services</b> <ul style="list-style-type: none"> <li>• Compass</li> <li>• GreatAmerica Leasing</li> <li>• LMI</li> <li>• MWAi<sup>Δ</sup></li> <li>• PrintFleet</li> </ul>
	<b>Job Accounting/Pull Printing</b> <ul style="list-style-type: none"> <li>• Bits<sup>Δ</sup></li> <li>• EFI</li> <li>• Equitrac<sup>Δ</sup></li> <li>• Genius Bytes<sup>Δ</sup></li> <li>• ITC</li> <li>• Jetmobile</li> <li>• OCM<sup>Δ</sup></li> <li>• PaperCut<sup>Δ</sup></li> <li>• Pharos<sup>Δ</sup></li> <li>• SafeCom<sup>Δ</sup></li> <li>• Vendapin</li> </ul>
	<b>Device Management</b> <ul style="list-style-type: none"> <li>• SyncThru* (Web Admin)</li> <li>• SyncThru 6* (Web Services)</li> </ul>

<sup>Δ</sup> XOA Platform Solution.

\* Samsung in-house solution.



### Intuitive 7" Color Touch Screen

Get up to speed quickly with an intuitive user interface. The large, easy-to-read color touch screen guides users with smooth scrolling. Even first-time users can manage complex jobs quickly and easily.

- **User Menu Customization (Create up to 40 Shortcut Icons)** Save time with jobs you do regularly.
- **Smart Search** Find specific functions quickly by entering a keyword.
- **Quick Copy** Access all of the copy functions at a glance.



## Protect both resources and data.

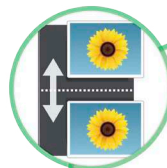
Data security is a major concern of businesses today. The Samsung Security Framework is standard on the CLX-8640ND and CLX-8650ND MFPs. It increases network protection and helps prevent unauthorized access to confidential information.

	Authenticated User	<ul style="list-style-type: none"> <li>• Authentication</li> <li>• Authorization</li> <li>• Accounting</li> </ul>
	Protected Network	<ul style="list-style-type: none"> <li>• Secure Socket Layer (SSL)/ Transport Layer Security (TLS)</li> <li>• Simple Network Management Protocol (SNMP) v3</li> <li>• Internet Protocol Security IPsec (Internet Protocol [IP] v4, IPv6)</li> <li>• 802.1x with Extensible Authentication Protocol [EAP]</li> <li>• Protocol/port management</li> <li>• MAC/IP filtering</li> </ul>
	Secure Document	<ul style="list-style-type: none"> <li>• Secure print</li> <li>• Secure scan</li> <li>• Secure fax</li> <li>• Document tagging (watermark, stamps)</li> </ul>
	Secure Data	<ul style="list-style-type: none"> <li>• Encryption</li> <li>• Hard disk drive image overwrite</li> <li>• Digital signature</li> </ul>
	Secure Management	<ul style="list-style-type: none"> <li>• System logs</li> <li>• System back up</li> <li>• Email notification</li> </ul>

### Security is Paramount

To ensure data security, the Samsung Security Framework is standard, and provides a secure network that helps prevent unauthorized access to confidential information.

Eco Button



Eco Driver



### Efficiency that Saves Money and Resources

Save paper and energy with the CLX-8640ND and CLX-8650ND MFPs' ECO button. With a single touch, you can print more images on every page, including 2-up, 4-up and duplex printing, which saves paper. Save more paper with automatic blank pages skipping. The Easy Eco Driver also allows you to preview your document before printing, thereby reducing wasted printouts and saving even more paper and toner.



Samsung Eco Driver earned the 2012 Outstanding Achievement Award from Buyers Lab, Inc.

### Monitor More, Use Less

With Single Sign On, users log in once to access all Samsung solutions. And with Samsung SyncThru™ Admin, your IT department can easily monitor and manage usage.

## Features and options that match your workgroup's requirements.

### Dual Scan Document Feeder (Standard)

- Single pass duplexing ADF
- 100-sheet capacity
- Two-sided document scanning
- Paper empty / width / length detect

### Two-Bin Finisher (Option)

- 350-sheet capacity
- Corner stapling up to 50 sheets

### Fax Kit (Option)

- ITU-T G3, Super G3

### Triple Cassette Feeder (Option)

- 1,560-sheet capacity
- Paper empty / size detect

### Second Cassette Feeder (Option)

- 520-sheet capacity
- Paper empty / size detect



Specifications	CLX-8650ND	CLX-8640ND
<b>Print</b>		
Speed (Mono/Color)	Up to 51 pages per minute (in letter)	Up to 40 pages per minute (in letter)
First Print Out Time (Mono/Color)	Less than 9 seconds / Less than 11 seconds	Less than 9 seconds / Less than 11 seconds
Resolution	Up to 1200 x 1200 dpi	
Emulation	PCL5, PCL6, PostScript, PDF 1.7	
Duplex	Built-in	
<b>Copy</b>		
Speed (Mono/Color)	Up to 51 pages per minute (in letter)	Up to 40 pages per minute (in letter)
First Copy Out Time (Mono/Color)	Less than 9 seconds	Less than 9 seconds
Resolution (Platen / DADF)	600 x 600 dpi / 600 x 300 dpi	
Reduce & Enlarge	25% ~ 400% (Platen Copy), 25% ~ 200% (Single pass duplexing ADF Copy)	
Multi Copy	1~9,999 pages	
Duplex Copy	Built-in	
Copy Features	ID Card copy (Platen only), Auto fit, Book copy (Platen only), Booklet, N-up	
<b>Scan</b>		
Compatibility	TWAIN (N/W)	
Method	Color CCD, Dual Scan	
Resolution (Optical / Enhanced)	Up to 600 x 600 dpi / Up to 4,800 x 4,800 dpi	
Scan to	HDD, Email, FTP, SMB, USB, PC	
<b>Fax</b>		
Compatibility	ITU-T G3, Super G3	
Modem Speed	33.6 Kbps	
Resolution (Mono)	Up to 600 x 600 dpi	
Memory	HDD Back-up	
Fax Feature	Speed Dial, Group Dial, On-hook Dial, Auto Redial, Caller ID, Secure Reception, Fax Forwarding	
<b>Paper Handling</b>		
Input Capacity and Types	Standard: 520-sheet cassette Tray, 100-sheet MP tray / Max: 2,180 sheets	
Output Capacity and Type	500 sheets Face Down	
Media Size	3.85" x 5.83" ~ 8.5" x 35.4"	
Media Type	Plain Paper, Thick Paper, Thin Paper, Bond Paper, Color Paper, CardStock, Labels, Envelope, Preprinted, Letterhead, Recycled Paper, Cotton, Archive	
ADF Document Size	Width: 5.7"~ 8.5" (145 ~ 216 mm) Length: 5.7" ~ 14.0" (145 ~ 356 mm)	
Capacity	100-sheet single pass duplexing ADF	
<b>General Features</b>		
Display	800 x 480 7" WVGA Color Touch Screen	
Interface	Hi-Speed USB 2.0 Host (2 Ports), Hi-Speed USB 2.0 Peripheral (1 Port), Ethernet 10/100/1000 base TX, FDI (Optional)	
Noise Level	Printing: 55dBA / Copying: 59dBA / Standby: 43dBA / Sleep: 30dBA	
Memory	RAM: 1GB Standard/Max	
HDD Standard	320GB	
Operating System	[Windows] XP 32/64bits, Vista 32/64bits, Windows 7/8 32/64bits, Windows 2003 Server 32/64bits, Windows Server 2008 32/64bits, Windows Server 2008 R2 64bits / [Linux] RedHat Enterprise Linux WS 4, 5 (32/64 bit) Fedora 5, 6, 7, 8, 9, 10, 11, 12, 13 (32/64 bit) / SuSE Linux 10.1 (32 bit) / OpenSuSE 10.2, 10.3, 11.0, 11.1, 11.2 (32/64 bit) / Mandriva 2007, 2008, 2009, 2009.1, 2010 (32/64 bit) / Ubuntu 6.06, 6.10, 7.04, 7.10, 8.04, 8.10, 9.04, 9.10, 10.04 (32/64 bit) / SuSE Linux Enterprise Desktop 10, 11 (32/64 bit) / [UNIX] Sun Solaris 9,10 (x86, SPARC) / HP-UX 11.0, 11i v1, 11i v2, 11i v3 (PA-RISC, Itanium)- IBM AIX 5.1, 5.2, 5.3, 5.4 / [Mac] Mac OS X 10.4 ~ 10.7	
Monthly Duty Cycle	200,000 sheets/month	
Dimension (W x D x H)	21.7" x 20.2" x 30.6"	
Weight	155.2 lbs. with Consumables	
<b>Consumables</b>		
CLT-C659S	Cyan Toner 20K* Yield	
CLT-M659S	Magenta Toner 20K* Yield	
CLT-Y659S	Yellow Toner 20K* Yield	
CLT-K659S	Black Toner 20K* Yield	
CLT-R659	CMYK Imaging Unit 40K* Yield	
CLT-W659	Waste Container 20K* Yield	
<b>Options</b>		
CLX-DSK20M	Second Cassette Feeder + Stand (520 sheet)	
CLX-S8640T	Triple Cassette Feeder (1,560 sheet)	
CLX-FAX170	Fax Kit	
CLX-FIN25S	2-bin Finisher	
SCX-STP000	Finishing Staples Cartridge 15K Yield	

\*Declared yield in accordance with 5% coverage.

Product Support: 1-866-SAM4BIZ | 1-800-SAMSUNG | [samsung.com/printer](http://samsung.com/printer)

Follow us:  @SamsungBizUSA |  [youtube.com/user/samsungbizusa](http://youtube.com/user/samsungbizusa)



©2013 Samsung Electronics America, Inc. Samsung is a registered mark of Samsung Electronics Corp., Ltd. Specifications and designs are subject to change without notice. Print speed will be affected by operating system used, computing performance, application software, connection method, media type, media size and job complexity. Copy speed is based on Single Document Multiple Copy. Non-metric weights and measurements are approximate. All other brand, product, service names and logos are trademarks and/or registered trademarks of their respective manufacturers and companies. Simulated screen images. See [samsung.com](http://samsung.com) for detailed information. Printed in USA on 50% recycled (30% post-consumer waste) paper using soy inks. PNT-CLX8640NDCLX8650ND-MAR13T

