

DATA SHEET

ARUBA CLEARPASS ONGUARD

Enterprise-class endpoint protection, posture assessments and health checks

ClearPass OnGuard agents perform advanced endpoint posture assessments, on leading computer operating systems to ensure compliance is met before devices connect.

Running on the Aruba ClearPass Policy Manager platform, the advanced network access control (NAC) framework in ClearPass OnGuard offers exceptional safeguards against vulnerabilities.

The following operating systems and versions are supported:

- Microsoft – Support for Windows 7 and above.
 - Can be run as a service.
- Apple – Support for Mac OS X 10.7 and above.
- Linux – Support for Red Hat Enterprise Linux 4 and above, Ubuntu 12.x LTS and 14.x LTS, Community Enterprise Operating System (CentOS) 4 and above, Fedora Core 5 and above, and SUSE Linux 10.x.

Supported agents:

	OnGuard Persistent Agent	OnGuard Dissolvable Agent	Microsoft's NAP Agent
Microsoft	X	X	X
Apple	X	X	
Linux	X*	X	

Note: Auto-remediation only supported by persistent agents
* Persistent agent supported on Ubuntu endpoints running 12.x LTS or 14.x LTS

THE CLEARPASS ADVANTAGE

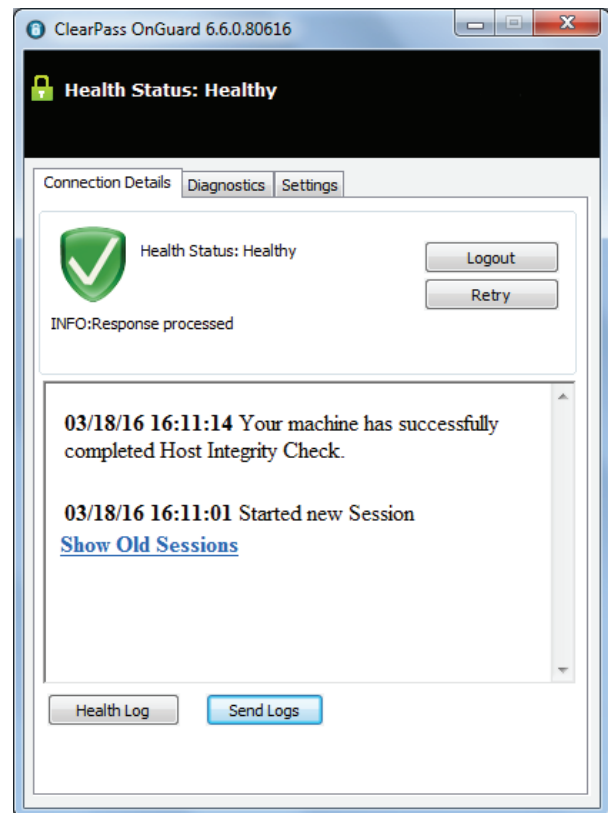
In addition to anti-virus, anti-spyware and personal firewall audits performed by traditional NAC products, OnGuard agents can perform more granular posture and health checks, to ensure a greater level of endpoint compliance and network authorization.

Persistent and dissolvable agents

The difference between the two is that the persistent agent provides nonstop monitoring and automatic remediation and control. When running persistent OnGuard agents, ClearPass Policy Manager can centrally send system-wide notifications and alerts, and allow or deny network access based on real-time changes on the endpoint. The persistent agent also supports auto and manual remediation.

KEY FEATURES

- Enhanced capabilities for endpoint compliance and control
- Supports Microsoft, Apple, and Linux operating systems
- Anti-virus, anti-spyware, firewall checks and more
- Optional auto-remediation and quarantine capabilities
- System-wide endpoint messaging, notifications and session control
- Centrally view the online status of all devices from the ClearPass Policy Manager platform



Successful wireless authentication of a Windows 7 device.

Alternatively, the web-based dissolvable agent is ideal for personal, non IT-issued devices that connect via a captive portal and do not allow agents to be permanently installed. A one-time check at login ensures policy compliance. Devices not meeting compliance can be redirected to a captive portal for manual remediation.

Once the browser page used during authentication is closed, the dissolvable agent is removed leaving no trace.

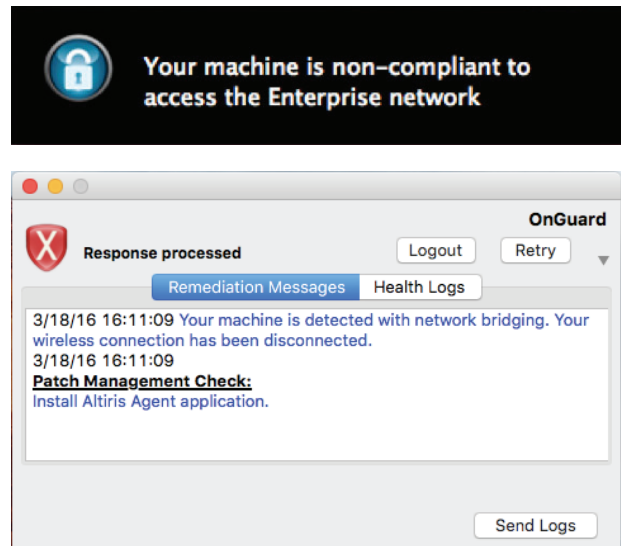
Automatic remediation

If unhealthy endpoints do not meet compliance requirements, the user receives a message about the endpoint status and instructions on how to achieve compliance if auto-remediation is not used.

Messages can include reasons for remediation, links to helpful URLs and helpdesk contact information. ClearPass persistent agents provide the same message and remediation capabilities for 802.1X and combined environments.

IT-managed and BYOD endpoint compliance

OnGuard persistent and dissolvable agents can be used together in environments where endpoints are owned by the organization, employees and visitors. This ensures that all devices are assessed and granted proper privileges before accessing the network.



Detailed Mac OS X quarantine messages.

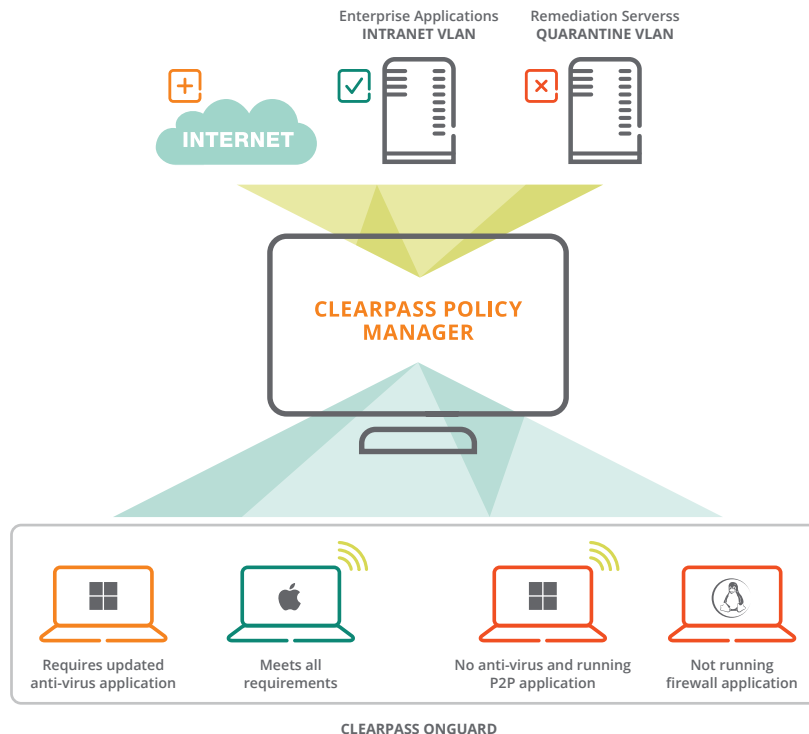


figure 1.0_032916_clearpassonguard-dsa

Persistent and dissolvable agents can be used for endpoint health checks.

Complete endpoint visibility

To simplify troubleshooting, endpoint control and compliance reporting, ClearPass Policy Manager allows IT to centrally manage health-check settings and policies. IT also has the ability to view endpoint activity, including user and device data for each device that connects using OnGuard agents.

Real-time endpoint compliance

Depending on operating system type OnGuard performs the following level of posture and health checks.

	Windows	Mac OS X	Linux
Installed Applications	X	X	
AntiVirus	X	X	X
AntiSpyware	X	X	
Firewall	X	X	
Disk Encryption	X	X	
Network Connections	X	X	
Processes	X	X	
Patch Management	X	X	
Peer to Peer	X	X	
Services	X	X	X
Virtual Machines	X	X	
Windows Hotfixes	X		
USB Devices	X	X	
File Check	X	X	

* Chart represents ClearPass version 6.6 functionality.

** Disclaimer: Not all checks are supported across operating systems and agent type.

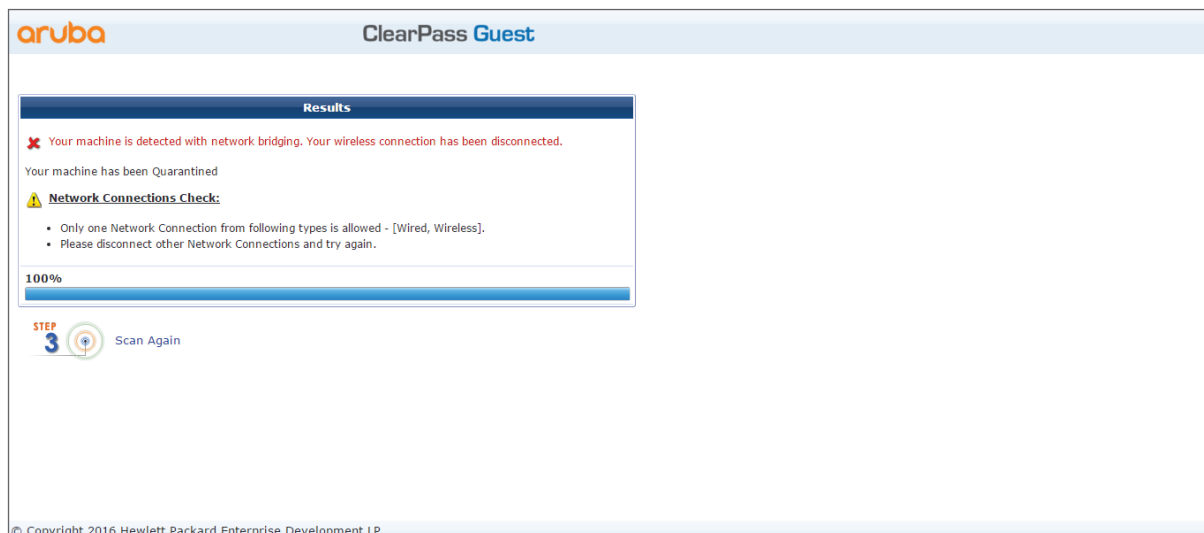
ORDERING GUIDANCE

ClearPass OnGuard can be ordered via persistent licenses where support is separate or by subscription licenses that include ArubaCare support.

Available Enterprise option enables organizations to flexibly use the licenses for either ClearPass OnGuard, Onboard or Guest.

Ordering ClearPass OnGuard involves the following three steps:

1. Determine the number of unique computer endpoints that will have posture/health checks performed prior to network access within your environment.
2. Choose the appropriate ClearPass Policy Manager hardware or virtual appliance to accommodate the total number from above. The Enterprise Starter Bundle that contains 25 licenses can be used.
3. Select the remaining capacity needed to accommodate the total number of endpoints using the OnGuard part numbers. Anything over the capacity of a base appliance will require the purchase of a second ClearPass Policy Manager appliance.



Centralized view of endpoints OnGuard activity.

Example: To support the provisioning of 2,000 devices, make sure that ClearPass Policy Manager is sized to accommodate 2,000 endpoints.

Purchase the following:

- ClearPass Appliance – CP-HW-5K or CP-VA-5K
- ClearPass OnGuard – 2 X LIC-CP-OG-1K or for subscription, SUBX-CP-OG-1K

Additional ClearPass OnGuard capacity can be purchased at any time to meet growth demands. ClearPass OnGuard is licensed on a per endpoint basis.

ORDERING INFORMATION*

Part Number	Description
JW568AAE	Aruba ClearPass OnGuard 100 Endpoint License E-LTU
JW569AAE	Aruba ClearPass OnGuard 500 Endpoint License E-LTU
JW570AAE	Aruba ClearPass OnGuard 1K Endpoint License E-LTU
JW571AAE	Aruba ClearPass OnGuard 2500 Endpoint License E-LTU
JW572AAE	Aruba ClearPass OnGuard 5K Endpoint License E-LTU
JW573AAE	Aruba ClearPass OnGuard 10K Endpoint License E-LTU
JW574AAE	Aruba ClearPass OnGuard 25K Endpoint License E-LTU
JW575AAE	Aruba ClearPass OnGuard 50K Endpoint License E-LTU
JW576AAE	Aruba ClearPass OG 100K Endpoint License E-LTU
OnGuard Subscription Part Numbers	Description
JW419AAE	Aruba ClearPass OnGuard 100 Endpoint Licenses 1-Year Subscription E-STU
JW427AAE	Aruba ClearPass OnGuard 100K Endpoint Licenses 1-Year Subscription E-STU
JW424AAE	Aruba ClearPass OnGuard 10K Endpoint Licenses 1-Year Subscription E-STU
JW421AAE	Aruba ClearPass OnGuard 1K Endpoint Licenses 1-Year Subscription E-STU
JW422AAE	Aruba ClearPass OnGuard 2500 Endpoint Licenses 1-Year Subscription E-STU
JW425AAE	Aruba ClearPass OnGuard 25K Endpoint Licenses 1-Year Subscription E-STU
JW420AAE	Aruba ClearPass OnGuard 500 Endpoint Licenses 1-Year Subscription E-STU
JW426AAE	Aruba ClearPass OnGuard 50K Endpoint Licenses 1-Year Subscription E-STU
JW423AAE	Aruba ClearPass OnGuard 5K Endpoint Licenses 1-Year Subscription E-STU
JW428AAE	Aruba ClearPass OnGuard 100 Endpoint Licenses 3-Year Subscription E-STU
JW436AAE	Aruba ClearPass OnGuard 100K Endpoint Licenses 3-Year Subscription E-STU
JW433AAE	Aruba ClearPass OnGuard 10K Endpoint Licenses 3-Year Subscription E-STU
JW430AAE	Aruba ClearPass OnGuard 1K Endpoint Licenses 3-Year Subscription E-STU
JW431AAE	Aruba ClearPass OnGuard 2500 Endpoint Licenses 3-Year Subscription E-STU
JW434AAE	Aruba ClearPass OnGuard 25K Endpoint Licenses 3-Year Subscription E-STU
JW429AAE	Aruba ClearPass OnGuard 500 Endpoint Licenses 3-Year Subscription E-STU
JW435AAE	Aruba ClearPass OnGuard 50K Endpoint Licenses 3-Year Subscription E-STU
JW432AAE	Aruba ClearPass OnGuard 5K Endpoint Licenses 3-Year Subscription E-STU
JW437AAE	Aruba ClearPass OnGuard 100 Endpoint Licenses 5-Year Subscription E-STU
JW445AAE	Aruba ClearPass OnGuard 100K Endpoint Licenses 5-Year Subscription E-STU
JW442AAE	Aruba ClearPass OnGuard 10K Endpoint Licenses 5-Year Subscription E-STU
JW439AAE	Aruba ClearPass OnGuard 1K Endpoint Licenses 5-Year Subscription E-STU
JW440AAE	Aruba ClearPass OnGuard 2500 Endpoint Licenses 5-Year Subscription E-STU

* Subscription and enterprise licenses can be purchased in 1-, 3- or 5-year increments for 100, 500, 1,000, 2,500, 5,000, 10,000, 25,000, 50,000, and 100,000 endpoints

** Extended with support contract

ORDERING INFORMATION*	
OnGuard Subscription Part Numbers	Description
JW443AAE	Aruba ClearPass OnGuard 25K Endpoint Licenses 5-Year Subscription E-STU
JW438AAE	Aruba ClearPass OnGuard 500 Endpoint Licenses 5-Year Subscription E-STU
JW444AAE	Aruba ClearPass OnGuard 50K Endpoint Licenses 5-Year Subscription E-STU
JW441AAE	Aruba ClearPass OnGuard 5K Endpoint Licenses 5-Year Subscription E-STU
Enterprise Perpetual Part Number	Description
JW595AAE	Aruba ClearPass Enterprise 100 Endpoint License E-LTU
JW603AAE	Aruba ClearPass Enterprise 100K Endpoint License E-LTU
JW600AAE	Aruba ClearPass Enterprise 10K Endpoint License E-LTU
JW597AAE	Aruba ClearPass Enterprise 1K Endpoint License E-LTU
JW598AAE	Aruba ClearPass Enterprise 2500 Endpoint License E-LTU
JW601AAE	Aruba ClearPass Enterprise 25K Endpoint License E-LTU
JW596AAE	Aruba ClearPass Enterprise 500 Endpoint License E-LTU
JW602AAE	Aruba ClearPass Enterprise 50K Endpoint License E-LTU
JW599AAE	Aruba ClearPass Enterprise 5K Endpoint License E-LTU
Enterprise Subscription Part Numbers	Description
JW338AAE	Aruba ClearPass Enterprise 100 Endpoint Licenses 1-Year Subscription E-STU
JW346AAE	Aruba ClearPass Enterprise 100K Endpoint Licenses 1-Year Subscription E-STU
JW343AAE	Aruba ClearPass Enterprise 10K Endpoint Licenses 1-Year Subscription E-STU
JW340AAE	Aruba ClearPass Enterprise 1K Endpoint Licenses 1-Year Subscription E-STU
JW341AAE	Aruba ClearPass Enterprise 2500 Endpoint Licenses 1-Year Subscription E-STU
JW344AAE	Aruba ClearPass Enterprise 25K Endpoint Licenses 1-Year Subscription E-STU
JW339AAE	Aruba ClearPass Enterprise 500 Endpoint Licenses 1-Year Subscription E-STU
JW345AAE	Aruba ClearPass Enterprise 50K Endpoint Licenses 1-Year Subscription E-STU
JW342AAE	Aruba ClearPass Enterprise 5K Endpoint Licenses 1-Year Subscription E-STU
JW347AAE	Aruba ClearPass Enterprise 100 Endpoint Licenses 3-Year Subscription E-STU
JW355AAE	Aruba ClearPass Enterprise 100K Endpoint Licenses 3-Year Subscription E-STU
JW352AAE	Aruba ClearPass Enterprise 10K Endpoint Licenses 3-Year Subscription E-STU
JW349AAE	Aruba ClearPass Enterprise 1K Endpoint Licenses 3-Year Subscription E-STU
JW350AAE	Aruba ClearPass Enterprise 2500 Endpoint Licenses 3-Year Subscription E-STU
JW353AAE	Aruba ClearPass Enterprise 25K Endpoint Licenses 3-Year Subscription E-STU
JW348AAE	Aruba ClearPass Enterprise 500 Endpoint Licenses 3-Year Subscription E-STU
JW354AAE	Aruba ClearPass Enterprise 50K Endpoint Licenses 3-Year Subscription E-STU
JW351AAE	Aruba ClearPass Enterprise 5K Endpoint Licenses 3-Year Subscription E-STU
JW356AAE	Aruba ClearPass Enterprise 100 Endpoint Licenses 5-Year Subscription E-STU
JW364AAE	Aruba ClearPass Enterprise 100K Endpoint Licenses 5-Year Subscription E-STU
JW361AAE	Aruba ClearPass Enterprise 10K Endpoint Licenses 5-Year Subscription E-STU
JW358AAE	Aruba ClearPass Enterprise 1K Endpoint Licenses 5-Year Subscription E-STU
JW359AAE	Aruba ClearPass Enterprise 2500 Endpoint Licenses 5-Year Subscription E-STU
JW362AAE	Aruba ClearPass Enterprise 25K Endpoint Licenses 5-Year Subscription E-STU
JW357AAE	Aruba ClearPass Enterprise 500 Endpoint Licenses 5-Year Subscription E-STU
JW363AAE	Aruba ClearPass Enterprise 50K Endpoint Licenses 5-Year Subscription E-STU
JW360AAE	Aruba ClearPass Enterprise 5K Endpoint Licenses 5-Year Subscription E-STU

* Subscription and enterprise licenses can be purchased in 1-, 3- or 5-year increments for 100, 500, 1,000, 2,500, 5,000, 10,000, 25,000, 50,000, and 100,000 endpoints

** Extended with support contract

ORDERING INFORMATION*

Warranty

Software	90 days**
----------	-----------

* Subscription and enterprise licenses can be purchased in 1-, 3- or 5-year increments for 100, 500, 1,000, 2,500, 5,000, 10,000, 25,000, 50,000, and 100,000 endpoints

** Extended with support contract



1344 CROSSMAN AVE | SUNNYVALE, CA 94089
1.844.473.2782 | T: 1.408.227.4500 | FAX: 1.408.227.4550 | INFO@ARUBANETWORKS.COM