

NEO[®] 200s/400s 2U/4U Tape Libraries

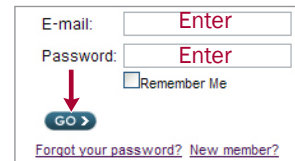


This Quick Start Guide is designed to be used with either the NEO 200s (2U) or the NEO 400s (4U) tape library. Setup and configuration information can be found in the *NEO 200s/400s User Guide* located on the Overland Storage web site (see [Step 6](#)).

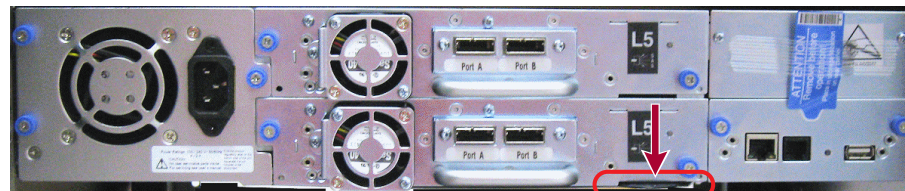
Step 1

It is **essential** that you activate your warranty. Technical and warranty support are **not available** until the warranty is active:

1. Go to <http://www.overlandstorage.com/> and select **Service & Support > My Products**.
2. At the **Site Login**, enter your **e-mail address** and **password**, and click **GO**.
3. Click **Register New Product**.
4. Fill in the information (including serial number) and click **Submit**.



The serial number is located on the pull-out tab at the rear.



Enter only the core characters skipping the parenthesis, "PN:", and "SN:" components.

Example: 11S00V7150Y1N1B78X9938

Your warranty certificate will be emailed to you. Follow the instructions in the email to complete the process.



Step 2

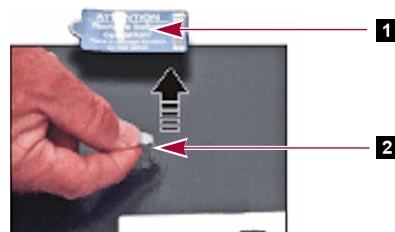
WARNING: Due to the weight of the appliance, it is recommended that at least two people be used to lift the unit out of the box to prevent injury.

AVERTISSEMENT: En raison du poids de l'appareil, il est recommandé d'utiliser deux personnes au moins pour soulever l'appareil hors de la boîte pour éviter les blessures.

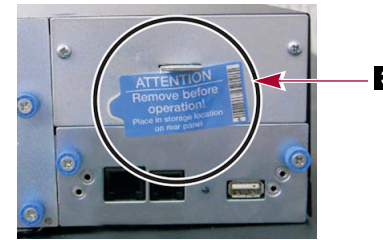
IMPORTANT: The shipping lock, which prevents the library accessor from moving during shipment, must be removed before the library is powered ON.

The shipping lock is held in place with a label and is located in the top center of the library. After the shipping lock is removed, store it on the right side of the back panel for future use.

1. Using two people, remove the **library** from its box and set it on a secure surface.
2. Remove blue securing **label** (1).



3. Lift and remove the **shipping lock** (2).
 4. Store the shipping lock and blue label at the top right (3) of the rear panel of the library.
- Slide the lock into the slot with the bottom of the lock showing below the slot. Press the label over the flat part of the lock.



Step 3

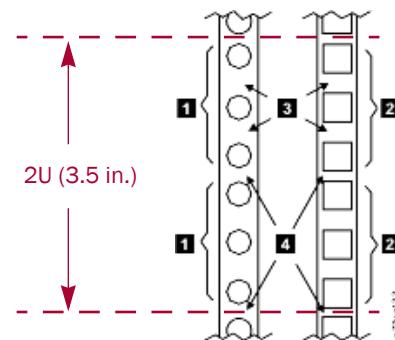
The NEO 200s/400s libraries each come with a rack shelf kit for easy installation and securing of the library into a 19-inch (EIA-310) rack.

IMPORTANT: Two-post telco-style or other racks less than 29 inches in depth will NOT support this unit.

Install the Rack Rails

1. Determine the location in your rack for your library to be installed and, using a pencil, mark the location on each vertical rail in your rack.

NOTE: A 2U library requires 2U (3.5 in.) of rack space. A 4U library requires 4U (7 in.) of rack space.



- 1 Two EIA units (2U) needed for round hole and square hole rail installation
- 2 Wide Gaps within the EIA unit
- 3 Narrow Gaps between EIA units

2. Ensuring that the flange on each rail points toward each other to form a shelf, secure one rail to **each side** of the rack in your chosen rack location:

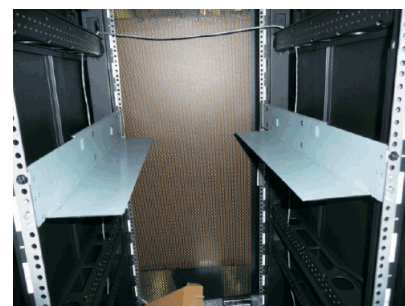
NOTE: Use the screws for your rack type (labeled for round holes or square holes) and a #2 Phillips screwdriver to install the rails.

- a. **Extend the rails** to fit your particular rack depth.

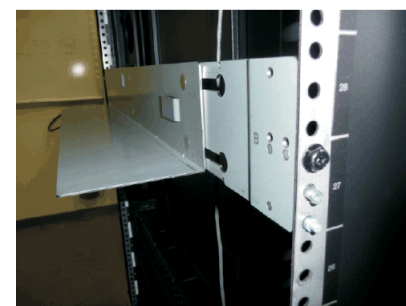
The two alignment pins go into the first and second holes from the bottom of the 2U space. The extension sections should be at the rear.

- b. With the large **black screws**, secure the front and back of each rail to the rack.

The screw securing the rack goes into the fourth hole from the bottom in the front and the middle hole in the rear.



Front View



Rear View

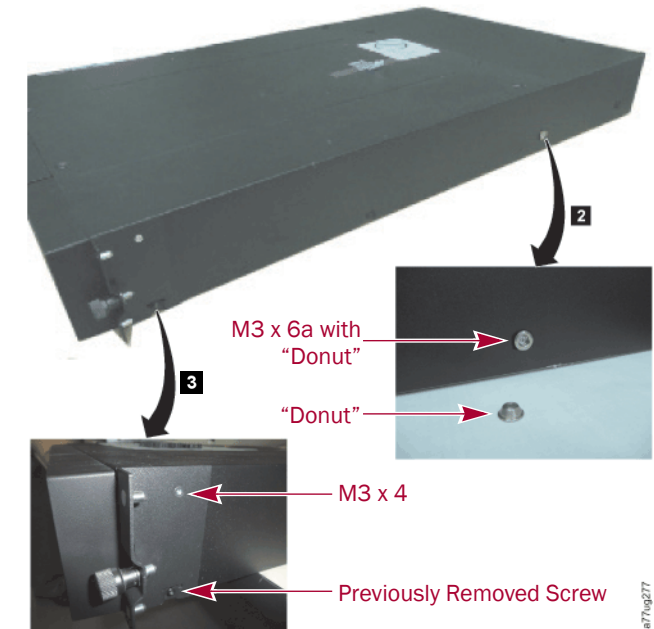
NOTE: The rails must be fastened with the bottom of the each rail parallel to floor and at the same level.

Attach the Rail Brackets

1. Using the Torx wrench included in your shipment, remove the two screws (1) noted from both sides of the library.
Screw locations on the 4U library are similar.



2. Install the library rack anchor "donuts" (2) on each side of your library using the M3 x 6 counter-sunk screws included in the rack kit.



3. Install the library mounting brackets (3) as shown on each side of the 2U library using the screw that was removed from your library and an additional M3 x 4 counter-sunk screw included in the rack kit.

The 4U rack anchors and mounting brackets are similar.

Insert the Library in Rack

WARNING: It is recommended that a mechanical lifter (or at least two people) be used to raise and align the unit to prevent injury during installation. Use care when inserting or removing a unit into or out of a rack to prevent the accidental tipping of the rack, causing damage or personal injury.

AVERTISSEMENT: Afin d'éviter des blessures pendant l'installation, il est recommandé d'utiliser un monte-charge (ou au moins deux personnes) pour élever ou aligner l'appareil. Faites attention lorsque vous insérez ou retirez l'appareil d'un support, pour empêcher le déversement accidentel de la crémaillère causant des dommages et des blessures.

1. Using the mechanical lifter, position the **library** in front of the rack, aligned with the rails.
2. Slide the library onto the **rails** until the mounting brackets are up against the vertical rack rails.
The "donuts" on the side of the library should be under the side bump-out slots at the rear of the rails.
3. Secure it to the rack with the **captive screws**.

Step 4

The NEO 200s/400s libraries are expandable and accept add-on components to enhance performance:

- Additional tape drives can be installed in the empty bays. On the NEO 400s, always install the drives from the bottom up.
- Redundant (second) power supply is available for the NEO 400s.

Once the library is secure in the rack, the additional items should then be installed before hooking up the system. Follow the instructions enclosed with each component.

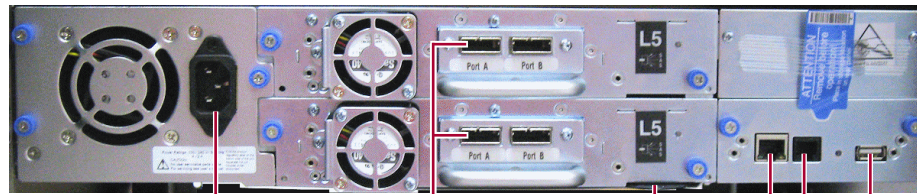
Step 5

Cable Attachment

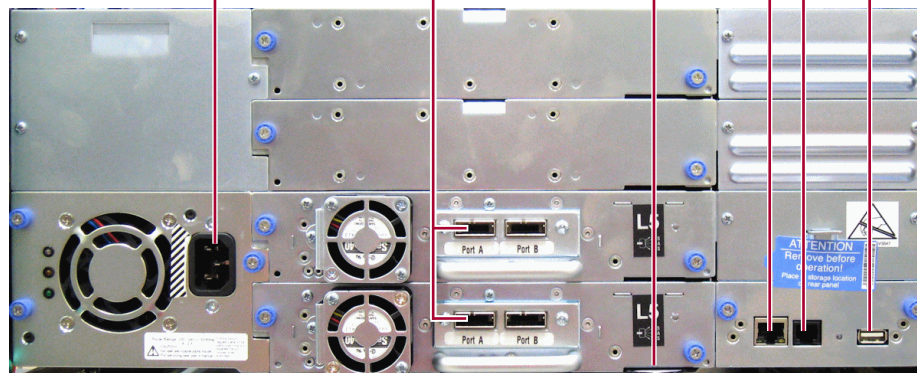
CAUTION: It is recommended that you shut down and turn OFF the associated server. Turn OFF all attached devices. Remove the power cables from the server and all attached accessories. Failure to remove the power cords from these devices before connecting the host interface cable could result in damage to the library.

All cabling, power connections, and cooling are located on the NEO rear panel.

NEO 200s Library



NEO 400s Library



- 1 - AC Power Socket
- 2 - SAS HBA Ports
- 3 - S/N Pull-out Tab
- 4 - Ethernet Port
- 5 - Serial Port
- 6 - USB Connection

1. Attach one end of the **host interface cable** to the library:

- For a Serial Attached SCSI (SAS) connected library, attach one end of the SAS cable to Port A (left) SAS HBA (2) on the drive.
- For a Fibre Channel (FC) library, attach one end of the fibre cable to Port 0 (left) connector on the drive (not shown).

2. Attach the **other end** of the host interface cable as follows:

- For a SAS library, connect the host interface cable to the host HBA, using a direct SFF-8088 connection, or an interposer as required. Unused SAS connectors do not need termination.
 - For a Fibre Channel library, connect the fibre cable to the host or to a switch.
3. Plug the **network ethernet (management) cable** into the ethernet port on the back panel of the library. If the ethernet connection is directly attached to a server or laptop, a crossover ethernet cable may be required.

NOTE: It is the customer's responsibility to supply the crossover cable if one is required.

Step 6

User Guides

For detailed information on configuring your NEO, refer to the NEO 200s/400s *Users Guide*. It is **available online** at:

<http://docs.overlandstorage.com/neo>

An electronic version of this Quick Start Guide is also available on the web page.



Warranty and Technical Support

- WARNING:** This device may have more than one power cord. Disconnect ALL power supply cords before servicing.
- AVERTISSEMENT:** Ce dispositif peut avoir plus d'un cordon d'alimentation. Débranchez TOUTES les cordons d'alimentation avant l'entretien.

For warranty and technical support information, see our **Contact Us** web page:

<http://www.overlandstorage.com/company/contact-us/index.aspx>

To information on contacting Overland Technical Support, see our **Contact Support** web page:

<http://docs.overlandstorage.com/support>

To search for more service information, visit our **Expert Knowledge Base System**:

<http://support.overlandstorage.com/kb>

Verify Firmware & Drivers

Check online for the latest versions for the firmware and drivers for the NEO 200s/400s tape library:

<http://docs.overlandstorage.com/neo>

If needed, the diagnostic tool is also available at the same site.



NEO S-Series Accessories

NEO 200s/400s tape libraries utilize LTO data cartridges, as well as LTO cleaning cartridges. Used in the design, test and manufacture of your NEOs library, Overland LTO media provides superior data availability. Contact your Overland Storage sales representative to place your order for the desired media types and quantities. For the most current information, refer to the Overland Storage price list.

The following LTO cartridges and labels are currently available:

Description	Part Number
Ultrium LTO6 Data Cartridges, with Bar Code Labels	OV-LTO901605
Ultrium LTO5 Data Cartridges, with Bar Code Labels	OV-LTO901505
Ultrium LTO4 Data Cartridges, with Bar Code Labels	OV-LTO901405
Ultrium LTO Cleaning Cartridge	OV-LTO901999
LTO6 Bar Code Labels – 100 Data & 20 Cleaning	OV-LTO901012
LTO5 Bar Code Labels – 100 Data & 20 Cleaning	OV-LTO901011
LTO4 Bar Code Labels – 100 Data & 20 Cleaning	OV-LTO901008

The following NEOs add-on tape drives and accessories are available to enhance the usability of your NEOs backup and archive solutions. Contact your Overland Storage sales representative to place your order for the desired accessories.

Description	Part Number
Add-on Tape Drives	
NEOs LTO6 SAS Add-on Tape Drive	OV-NEOsAD6SA
NEOs LTO6 FC Add-on Tape Drive	OV-NEOsAD6FC
NEOs LTO5 SAS Add-on Tape Drive	OV-NEOsAD5SA
NEOs LTO5 FC Add-on Tape Drive	OV-NEOsAD5FC
NEOs LTO4 SAS Add-on Tape Drive	OV-NEOsAD4SA
NEOs LTO4 FC Add-on Tape Drive	OV-NEOsAD4FC
Optional Accessories	
NEO 400s Redundant Power Option	OV-NEO400sPWR
NEO 200s Left-side Magazine (with 1 Mail Slot)	OV-NEO200sMAGL
NEO 200s/400s Right-side Magazine	OV-NEOsMAGR
NEO 400s Upper Left-side Magazine	OV-NEO400sMAGUL
NEO 400s Lower Left-side Magazine (with 3-cart. Mail Slot)	OV-NEO400sMAGLL
Cabling	
LTO SAS Connectivity Kit	OV-SAS901711
3M Library/Host SAS Cable (SFF8088/SFF8088)	OV-CBL908088
3M Library/Host SAS Cable (SFF8470/SFF8088)	10600087-001



<http://support.overlandstorage.com>
You can get additional technical support on the Internet at the **Overland Storage Support web page**, or by contacting Overland Storage using the information found on the **Contact Us** page on our web site.
05/2013 ©2012-13 Overland Storage, Inc.