

MATERIAL & DISMANTLING INFORMATION

Evolis High Trust® Consumables



How to optimize the way you recycle your Evolis High Trust® cards, cleaning kits and ribbons (color, monochrome and security ribbons).

This document shows you the main components for each consumable and how to dismantle them. Each element must be separately sorted to optimize recycling.

Recycling facilities and waste treatment regulations vary depending on the location and profile of each user (private individuals, associations, businesses, local authorities, public sector, etc.). To find out about your options and to set up a suitable collection procedure, please contact your local waste treatment companies.

CARDS

CARD TYPE	PART #	MATERIAL
PVC cards without encoding All formats and colors	C4001, C4152, C4122, C4002, C4512, C4521, C8001, C8152, C8122, C8521, C4101, C4301, C4401, C4601, C4701, C9001, CBGC0030W, CBGC0020W	PVC
Magnetic stripe PVC cards	C4003, C4004	PVC + Mag Stripe
Rewritable cards	C5101, C5201	PVC + PET
Composite PET cards	C3001	PETF + PVC overlays
Paper cards	C2501, C2511, CBGCP030W	Paper
PLA/WOOD cards	C7001	PLA + Wood



PVC is recyclable, whatever the color and format of the card. The more technical the card (encoding, rewritable zones, etc.), the more complex recycling becomes. It may even be prevented entirely.

Paper cards can be sorted with cardboard waste.

Card Customization and Recycling

Color or monochrome card printing does not affect recycling. Blank and printed cards can be collected together.

During lamination, a layer of PET is added to the card. This makes it harder to recycle the card, or may even prevent recycling.



CLEANING KITS

Evolis cleaning kits are not recyclable.
Only the cardboard packaging should be sorted with cardboard waste.



COLOR, MONOCHROME AND SECURITY RIBBONS

European WEEE legislation

In Europe, every ribbon and activation key containing a RFID chip are considered as a waste of electrical and electronic equipment (WEEE) in accordance with European directive 2012/19.

Application of this symbol on your equipment is confirmation that they must be sorted with all waste electrical and electronic equipment, in compliance with agreed national procedures. It is not necessary to dismantle the consumables. They can be disposed directly as they are.

Ribbons themselves are not recyclable because of their chemical properties. But some components of the consumable can still be recycled. In order to optimize how each element is recycled, you will need to remove the ribbon, the labels, and the chip (for the references concerned).



RIBBON – QUANTUM2, SECURION RANGE

- Reference types (non-exhaustive list): R3011, R2131, R2011, R3012, R4002, R4221, etc.
- Compatible printers: Quantum2, KM500B & KM2000B and Securion.

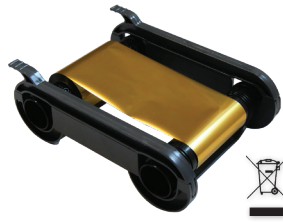


COMPONENT	MATERIAL
RIBBON	Inked PET + label
CORES	POM
PLASTIC PACKAGING	Polyolefin
CARDBOARD	Cardboard

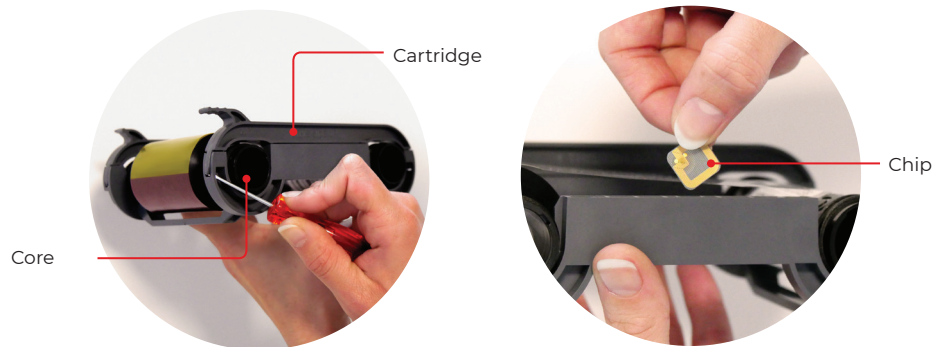


RIBBON CARTRIDGE – ZENIUS/PRIMACY RANGE

- Reference types (non-exhaustive list): R5F008xxx, R5H004xxx, RCT023NAA, RVA022NAA, etc.
- Compatible printers: Primacy, Zenius, Edikio Flex & Duplex, Elyspo, Kiosk KC (KC Essential, KC Prime, KC Max, KC200, KC200B), Altess & Altess Elite, Issengo, Privelio & Privelio XT



COMPONENT	MATERIAL
RIBBON	Inked PET + label
CORES	Recycled PET To limit the environmental footprint, the ribbon cores gradually transit to 100% recycled PET from January 1st., 2018. The new generation cores have the >PET< mark. The older generation ribbon cores were made of POM.
CARTRIDGE	Regenerated PS + label
RFID CHIP	Has to be recycled as a WEEE (WEEE European Directive 2012/19).
BLISTER	APET (Minimum 50% of recycled plastic) + label



How to dismantle a Zenius/Primacy cartridge and to remove the chip

RIBBON – PRIMACY EASY4PRO RANGE

- Reference types (non-exhaustive list): N5F008xxx, NCT023NAA, etc.
- Compatible printers: Primacy

COMPONENT	MATERIAL
RIBBON	Inked PET + label
CORES	Recycled PET To limit the environmental footprint, the ribbon cores gradually transit to 100% recycled PET from January 1st., 2018. The new generation cores have the >PET< mark. The older generation ribbon cores were made of POM.
ACTIVATION KEY + RFID CHIP	Recycled PET. Has to be recycled as a WEEE (WEEE European Directive 2012/19).
PLASTIC PACKAGING	Transparent PE



DATASHEET

RIBBON – AVANSIA RANGE

- Reference types (non-exhaustive list): RT4F010xxx, RTCL009NAA, etc.
- Compatible printers: Avansia

COMPONENT	MATERIAL
RIBBON	Inked PET + label
CORES	POM
ACTIVATION KEY + RFID CHIP	ABS. Has to be recycled as a WEEE (WEEE European Directive 2012/19).
CLEANING ROLL	Cardboard + Adhesive surface
BLISTER	Recycled transparent APET
NOTICE	Cardboard

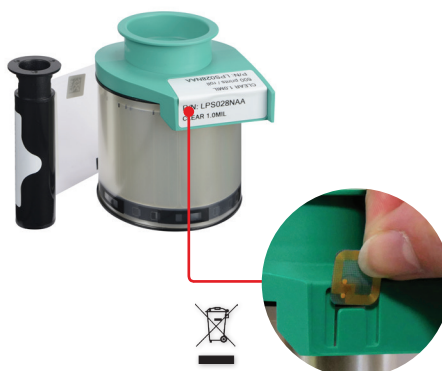


Activation key

RIBBON – LAMINATION RANGE

- Reference types (non-exhaustive list): LPS028NAA, LPA047NAA, LVA036NAA, LVR037NAA, etc.
- Compatible printers: Primacy Lamination, Avansia Lamination

COMPONENT	MATERIAL
RIBBON	Inked PET + label
CORES	POM + PS
CHIP SUPPORT	PS
RFID CHIP	Has to be recycled as a WEEE (WEEE European Directive 2012/19).
BLISTER	APET (30% of Recycled plastic) + label

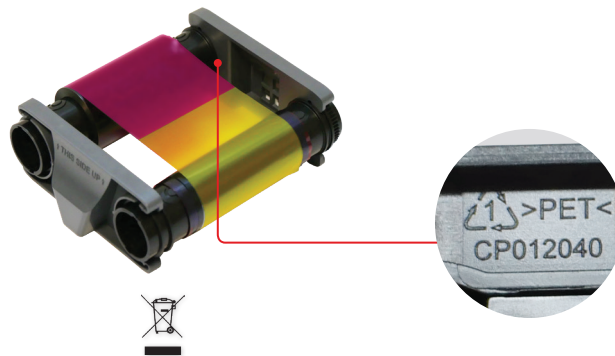


How to remove the chip from the support

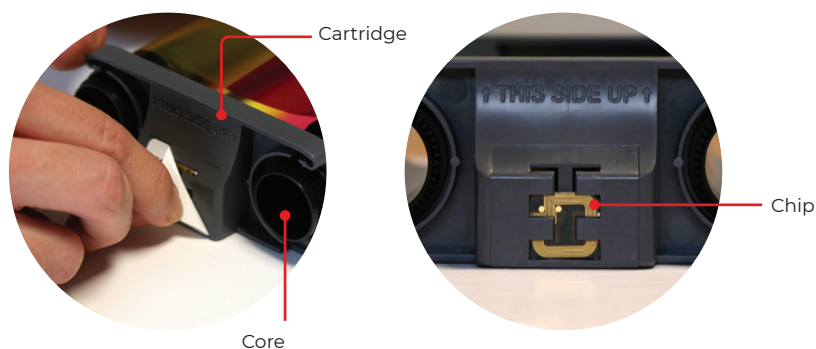


RIBBON CARTRIDGE – BADGY RANGE

- Reference types (non-exhaustive list): CBGR0100C, CBGR0500K, RCT052NAA, etc.
- Compatible printers: Badgy 100 & 200, Apteo, Edikio Access



COMPONENT	MATERIAL
RIBBON	Inked PET + label
CORES	Recycled PET To limit the environmental footprint, the ribbon cores gradually transit to 100% recycled PET from January 1st., 2018. The new generation cores have the >PET< mark. The older generation ribbon cores were made of POM.
CARTRIDGE	Regenerated PS + label
RFID CHIP	Has to be recycled as a WEEE (WEEE European Directive 2012/19).
BLISTER	APET (30% of recycled plastic) + label
NOTICE	Cardboard



How to dismantle a Badgy cartridge and to remove the chip



RIBBON – PRIMACY2 RANGE

- Cartridge > Reference types (non-exhaustive list): R5F208xxxx, R5H204xxxx, RCT223NAAA, RVA222NAAA, etc.
- Easypro > Reference types (non-exhaustive list): N5F208xxxx, N5H204xxxx, NCT223NAAA, etc.
- Compatible printers: Primacy2



COMPONENT	MATERIAL
RIBBON	Inked PET + label
CORES	Recycled PET
CARTRIDGE	Regenerated PS + label
TAG SUPPORT + RFID CHIP	Has to be recycled as a WEEE (WEEE European Directive 2012/19).
BLISTER	APET (Minimum 50% of recycled plastic) + label
PLASTIC PACKAGING	PEBD (50% Recycled PEBD)

RIBBON – AGILIA RANGE

- Reference types (non-exhaustive list): RTCL100NAAA, RT4F101xxxx, RT5F102xxxx...
- Compatible printer : Agilia

COMPONENT	MATERIAL
RIBBON	Inked PET + label
CORES	ABS
TAG SUPPORT	PC + ABS
RFID TAG	Has to be recycled as a WEEE (WEEE European Directive 2012/19).
BLISTER	APET (30% of recycled plastic) + label



How to remove the chip from the support



Evolis - 14 avenue de la Fontaine - Z.I. Angers-Beaucouzé 49070 Beaucouzé - France
 T +33 (0) 241 367 606 - F +33 (0) 241 367 612 - info@evolis.com

www.evolis.com