

BrightLink® Interactive Series

575Wi
Widescreen

585Wi
Widescreen
Ultra bright



BrightLink 585Wi shown.
Wall mount included.

The bright choice in interactive projectors for today's BYOD classroom.

One measurement of brightness is not enough — look for both high color brightness and high white brightness. The BrightLink 575Wi and 585Wi have:

Color/Interactive Brightness: 2,700 lumens (575Wi) and 3,300 lumens (585Wi)¹

Color/Interactive Brightness: 2,700 lumens (575Wi) and 3,300 lumens (585Wi)¹



PC-free interactivity — display and write on content from an iPad®/iPod®/iPhone®, Android™ device, document camera, DVD player, or no source at all

Convenient collaboration for BYOD classrooms — wirelessly share² and compare students' work from multiple devices, simultaneously, with Moderator software⁴

Wireless interactivity² — use EasyMP® software with a networked BrightLink projector to share and interact with content from your laptop as you move freely about the classroom

Dual pen support — allows two users to annotate simultaneously anywhere on the surface on which the image is projected

Includes SMART Notebook® collaborative learning software — plus a 1-year subscription to the SMART Notebook Advantage software maintenance program





The bright choice in interactive projectors for today's BYOD classroom.

The BrightLink 575Wi and 585Wi bring cutting-edge kinesthetic learning to the BYOD classroom. The 575Wi and 585Wi ultra short-throw projectors deliver dynamic images, whatever the task at hand. And, they display images up to 100" from just 12" away. Best of all, with PC-free interactivity, these projectors make it easy to walk in and start an interactive session on any wall or whiteboard. Instructors can use the Moderator software³ to share students' work over the network from multiple devices, simultaneously. Or, they can wirelessly project content² from iOS[®] or Android devices or utilize popular learning applications.

Projectors at a glance

Model	575Wi	585Wi
Resolution	WXGA resolution (1280 x 800)	WXGA resolution (1280 x 800)
Color Brightness	2,700 lumens ¹	3,300 lumens ¹
White Brightness	2,700 lumens ¹	3,300 lumens ¹
Interactive Brightness	2,700 lumens ¹	3,300 lumens ¹

Advanced connectivity



Wireless interactivity².

When using Epson's EasyMP software with a networked BrightLink projector, teachers are no longer tied down by restrictive and confining cables. Educators can wirelessly display and interact with content as they move about the classroom with their laptop, experiencing a whole new level of interactive freedom.

Advanced network connectivity and management capabilities.

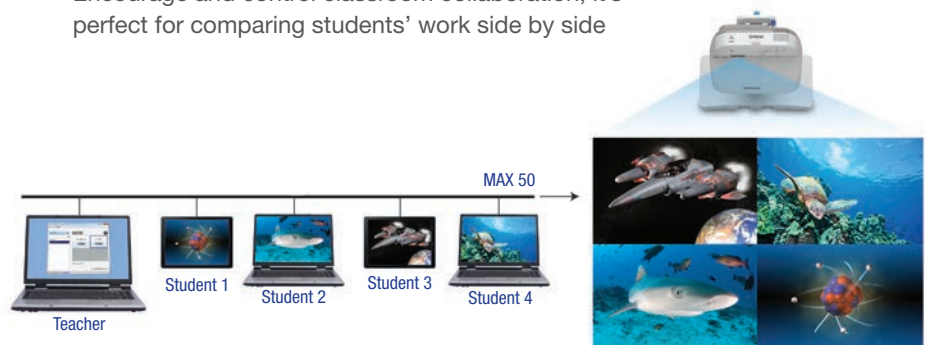
Present A/V content over the LAN or annotate on network content using BrightLink's instant annotation tools. With Epson's EasyMP Monitor software, IT administrators can configure and monitor the status of their Epson networked projectors, including the remote viewing of power status, lamp hours and temperature/filter conditions.

Classroom collaboration

Teaching tools.

Support BYOD classroom collaboration and wirelessly share and control content from personal devices to the projector with Epson's Moderator device management software³.

- Wirelessly connect up to 50 Windows® and Mac® devices, plus iOS or Android mobile devices running the Epson iProjection™ App⁴
- The teacher can share content from up to four device screens simultaneously to the projector and control which device screens to display
- Encourage and control classroom collaboration; it's perfect for comparing students' work side by side



Easy Interactive Tools 3.0.

This new annotation software from Epson allows users to control projector settings over the network; record and save video from Epson document cameras; save, re-open and edit annotation files; access archived curriculum; and program the interactive pen button to provide instant access to the most used tools. Best of all, Easy Interactive Tools is free and ships with each BrightLink projector.



SMART Notebook software for BrightLink.

SMART Notebook collaborative learning software helps teachers create engaging and interactive learning experiences. Make learning fun with SMART Notebook's subject-specific functionality, easy integration with mobile devices, and thousands of pieces of pre-created content. Each BrightLink includes a 4-seat user license (available for Windows and Macintosh®) for SMART Notebook, as well as a 1-year subscription to the SMART Notebook Advantage software maintenance program.

Energy saving

Save energy and reduce operating costs.

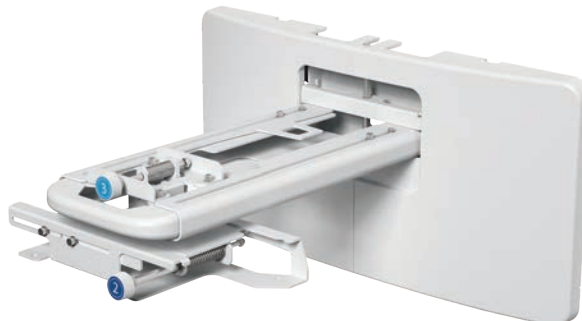
- ECO Mode — operates the projector at a lower brightness setting
- Light Optimizer Mode — adjusts the lamp brightness, based on the projected image
- Auto Mode — sensor automatically adjusts the lamp brightness, based on the room environment
- Lamp dimming — after a certain period of inactivity, the projector lamp dims, thereby extending the lamp life
- Sleep Mode (A/V Mute) — control your presentation; it's right at your fingertips
- Direct Power Off/On — power the projector on/off with the flip of a wall switch
- Standby audio out — use the projector's internal speakers or continue to pass audio out to an external speaker and play your audio even when the projector is "off" (in Standby Mode)

Easy to use

Simple Setup Suite from Epson.

Epson projectors offer a suite of innovative features that ensure flexible placement and fast, easy setup.

- Flexible wall mount (included) — the telescopic arm makes it easy to mount the projector and then adjust the image on any surface, including plain walls and existing boards, as well as thicker boards
- Auto calibration — get up and running in no time
- 2x HDMI® — use with multiple high-definition A/V devices (compatible with the latest laptops, Blu-Ray Disc® and media players)
- MHL® — the latest in connectivity⁵
- Display content with MHL-enabled smartphones, tablets and Roku® devices⁶
- Use the projector remote to control MHL-enabled devices
- Charge your MHL-enabled device when it's plugged into the projector
- Get instant access to movies, games and more
- Quick Corner® — this innovative feature allows you to move any of the four corners of an image independently, to adjust each corner for a perfectly rectangular picture
- Quick, convenient control — Instant Off® means no cool-down time required; it's ready to shut down when you are
- Copy menu settings for multiple projector installations — save on installation time; copy settings via a USB flash drive, USB cable or LAN



1 Color brightness (color light output) and white brightness (white light output) will vary depending on usage conditions. Color light output measured in accordance with IDMS 15.4; white light output measured in accordance with ISO 21118. | **2** Check your owner's manual to determine if a wireless LAN module must be purchased separately to enable wireless connection on your Epson projector. Epson projectors can be networked either through the Ethernet port on the projector (check model specifications for availability) or via a wireless connection. Not all Epson projectors are able to be networked. Availability varies depending on model. | **3** Moderator feature is part of EasyMP Multi-PC Projection software. | **4** To use Epson iProjection, the projector must be configured on a network. Epson projectors can be networked either through the Ethernet port on the projector (check model specifications for availability) or via a wireless connection. Check your owner's manual to determine if a wireless LAN module must be purchased separately to enable wireless connection on your Epson projector. Not all Epson projectors are able to be networked. Availability varies depending on model. | **5** Includes one Mobile High-Definition Link® (MHL) HDMI port. | **6** Roku Streaming Stick® allows you to watch content from popular Internet streaming services. Roku Streaming Stick only available in the U.S. | **7** Lamp life will vary depending upon mode selected, environmental conditions and usage. Lamp brightness decreases over time. | **8** See our website for convenient and reasonable recycling options at www.epson.com/recycle | **9** SmartWay is an innovative partnership of the U.S. Environmental Protection Agency that reduces greenhouse gases and other air pollutants and improves fuel efficiency.

Specifications and terms are subject to change without notice. EPSON, EasyMP, Instant Off, Quick Corner and PowerLite are registered trademarks, EPSON Exceed Your Vision is a registered logomark and Better Products for a Better Future and Epson iProjection are trademarks of Seiko Epson Corporation. BrightLink and PrivateLine are registered trademarks, Pilot is a trademark and Epson Connection is a service mark of Epson America, Inc. iPad, iPhone, iPod, Mac, Mac OS and Macintosh are trademarks of Apple Inc., registered in the U.S. and other countries. Android is a trademark of Google Inc. SmartWay is a registered trademark of the U.S. Environmental Protection Agency. All other product and brand names are trademarks and/or registered trademarks of their respective companies. Epson disclaims any and all rights in these marks. Copyright 2019 Epson America, Inc. Com-SS-Oct-13 CPD-52680R1 1/19

Specifications

Projection System Epson 3LCD, 3-chip technology
Projection Method Front/rear/wall mount/table
Driving Method Epson Poly-silicon TFT Active Matrix
Pixel Number 1,024,000 dots (1280 x 800) x 3
Color Brightness¹
 (Color Light Output) 575Wi: 2,700 lumens, 585Wi: 3,300 lumens
White Brightness¹
 (White Light Output) 575Wi: 2,700 lumens, 585Wi: 3,300 lumens
Interactive Color Brightness¹
 (Color Light Output) 575Wi: 2,700 lumens, 585Wi: 3,300 lumens
Interactive White Brightness¹
 (White Light Output) 575Wi: 2,700 lumens 585Wi: 3,300 lumens
Aspect Ratio 16:10
Native Resolution 1280 x 800 (WXGA)
Lamp Type⁷ 575Wi: 215 W UHE, 585Wi: 245 W UHE
Lamp Life⁷ 575Wi: Up to 10,000 hours (ECO Mode)
 Up to 5,000 hours (Normal Mode)
Lamp Life⁷ 585Wi: Up to 6,000 hours (ECO Mode)
 Up to 4,000 hours (Normal Mode)
Size (projected)
 Area: 4:3 53" – 88"
 16:10 60" – 100"
 16:9 59" – 97"
Keystone Correction (manual)
 Horizontal: ± 3 degrees; Vertical: ± 3 degrees
USB Plug 'n Play
 Mac OS® 10.5/10.6/10.7/10.8/10.9
USB Plug 'n Play for Windows
 2000 XP/Windows Vista®/Windows 7/Windows 8
Contrast Ratio Up to 10,000:1
Color Reproduction Up to 1 billion colors

Projection Lens

Type Manual focus
F-number 1.80
Focal Length 3.71 mm
Throw Ratio Range
 (16:10) 0.27 – 0.37, (4:3) 0.33 – 0.44, (16:9) 0.27 – 0.37
Zoom Ratio Digital zoom 1.0 – 1.35x

Other

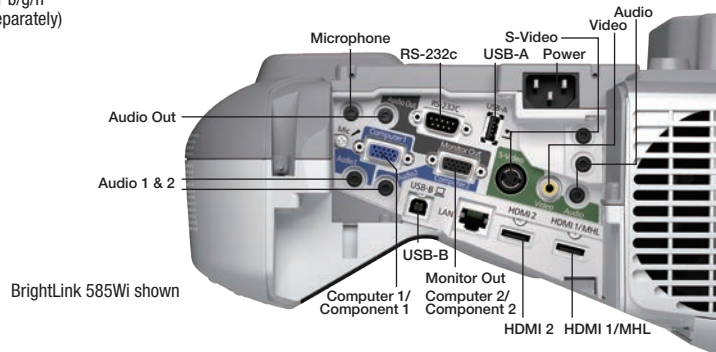
Display Performance NTSC: 480 lines, PAL: 576 lines
 (Depends on observation of the multi-burst pattern) Color Modes
Input Signal NTSC/NTSC4.43/PAL/M-PAL/N-PAL/PAL60/SECAM
Speaker 16 W monaural
Operating Temperature 41° to 95° F (5° to 35° C)
Power Supply Voltage 100 – 240 V ±10%, 50/60 Hz
Power Consumption 575Wi: 333 W, 585Wi: 376 W
 4.3 W standby (Communication On)
 0.33 W standby (Communication Off)
Fan Noise 35 dB (Normal Mode), 28 dB (ECO Mode)
Security Kensington lock provision, security anchor bar,
 password protection function

Interactivity

Interactive Technology Infrared, 940 nm
Interactive Area (image size)
 575Wi/585Wi: 60" – 100" diagonal (16:10, WXGA)
Interactive Modes Computer interactivity/input, Interactive
 and Whiteboard Modes annotation, Dual user
PC-free Annotation Dual user
Annotation Tools Epson Easy Interactive Tools, dual user
PC Annotation Sources USB, HDMI, Computer 1, Computer 2, LAN
PC-free Annotation Devices Document Cameras,
 DVD/Blu-Ray Disc player, iPod/iPad devices
Calibration Method Automatic or Manual
Interactive Connectivity USB cable for non-networked and LAN
Interactive Software Requirements
 Epson Easy Interactive Driver (Mac only)
 Windows and Linux: no driver required
 Macintosh®: Mac OS X 10.5/10.6/10.7/10.8/10.9
 Epson Easy Interactive Tools for Windows and Macintosh

Interfaces

Wireless LAN Port 802.11 b/g/n
 (optional — module sold separately)



Interactivity (continued)

System Compatibility
 Microsoft Windows XP SP2, Windows XP SP3 (Home Edition/
 Professional), Windows Vista, Windows Vista SP1, Windows
 Vista SP2 (All editions except for Starter), Windows 8.x,
 Windows 7 SP1 (All editions except for Starter),
 Mac OS X 10.5/10.6/10.7/10.8/10.9
SMART Notebook
 Windows: Pentium® 4 processor or better, 2GB of RAM, 2.5GB
 of free hard disk space for SMART® education software
 installation (an additional 600MB is required for complete
 Gallery installation), Windows XP SP3, Windows 7 SP1 or
 Windows 8 operating system
 Macintosh: Intel® Core™ 2 Duo processor or better, 2GB of
 RAM, 2GB of free hard disk space for SMART education
 software installation (an additional 600MB is required for
 complete Gallery installation), Mac OS X 10.7 or 10.8 operating
 system software

Interactive Input Device

Type of Interactive Input Device Digital pen
Interactive Pen Functions Mouse functions (left and right
 click), Electronic pen, LED battery status indicator
Interactive Pen Power AA battery, rechargeable
Compatible Pen Battery Types SANYO Eneloop® HR-3UTG/
 HR-UTGA (Eneloop batteries included. Eneloop is registered
 trademark of Sanyo Electronic Co. Ltd.), Manganese dry cell,
 alkaline dry cell
Interactive Pen Dimensions 6.4" x 0.94"
Interactive Pen Weight 1.1 oz (without battery)

Dimensions (W x D x H)

Excluding feet: 14.5" x 14.8" x 6.1"
 Weight: 12.1 lb

Remote Control

Features computer, video, USB, LAN, source search, power,
 aspect, color mode, volume, e-zoom, A/V mute, freeze, menu,
 help, auto, enter, esc, pointer, user
Operating Angle
 Rear: Right/left: -55 to +55 degrees, Upper/lower: +75 to +15 degrees
 Front: Right/left: -30 to +30 degrees, Upper/lower: 0 to +60 degrees
Operating Distance 19.7 ft (6 m)

Support

The Epson ConnectionSM
 Pre-sales support U.S. and Canada 800-463-7766
 www.epson.com, www.epson.com/brightlink
Service Programs
 2-year projector limited warranty, Epson Road Service
 program, PrivateLine® dedicated toll-free support and 90-day
 limited lamp warranty

What's In the Box

A BrightLink 575Wi or 585Wi ultra short-throw interactive
 projector, projector wall mount, projector template sheet,
 installation guide, quick user's guide, power cable, USB A/B
 cable, computer/VGA cable, electronic user manual, interactive
 driver for Mac, Epson Easy Interactive Tools, Network
 Management software, projector remote control, two (2)
 interactive pens, pen tray, two (2) AA batteries (for interactive
 pens) + battery charger, two (2) AA batteries (for remote),
 SMART Notebook redemption code

Eco Features

Energy-efficient 3LCD light engine, RoHS compliant, recyclable
 product®, Epson America, Inc. is a SmartWay® Transport Partner®

Ordering Information

BrightLink 575Wi	V11H601022
BrightLink 585Wi	V11H600022
Accessories	
Genuine Epson lamp 575Wi:	V13H010L79
585Wi:	V13H010L80
Replacement air filter	V13H134A40
Component video cable HD15/3RCA (male), 3.0 m	ELPKC19
Wall mount	V12H675020
Table projection mount	V12H516020
Wireless microphone	V12H4430M2
External speakers (ELSP02)	V12H467020
Wireless 802.11b/g/n LAN unit	V12H418P12
Quick wireless USB key	V12H005M09
DC-06 USB document camera	V12H321005
DC-11 document camera	V12H377020
DC-12 document camera	V12H594020
DC-20 document camera	V12H500020
Easy interactive pen A (orange)	V12H666010
Easy interactive pen B (blue)	V12H667010
Replacement pen tips	V12H668010
Interactive pen extension	V12H590001
USB extension cable	V12H525001
PowerLite® Pilot™ connection and control box	V12H614020
16:10 height adjustable cart for Epson	V12H457008
90" whiteboard	V12H468002
96" whiteboard	V12H468001

Contact:

