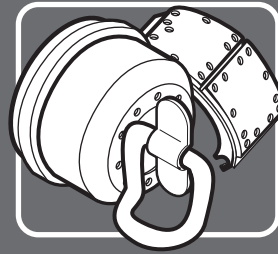


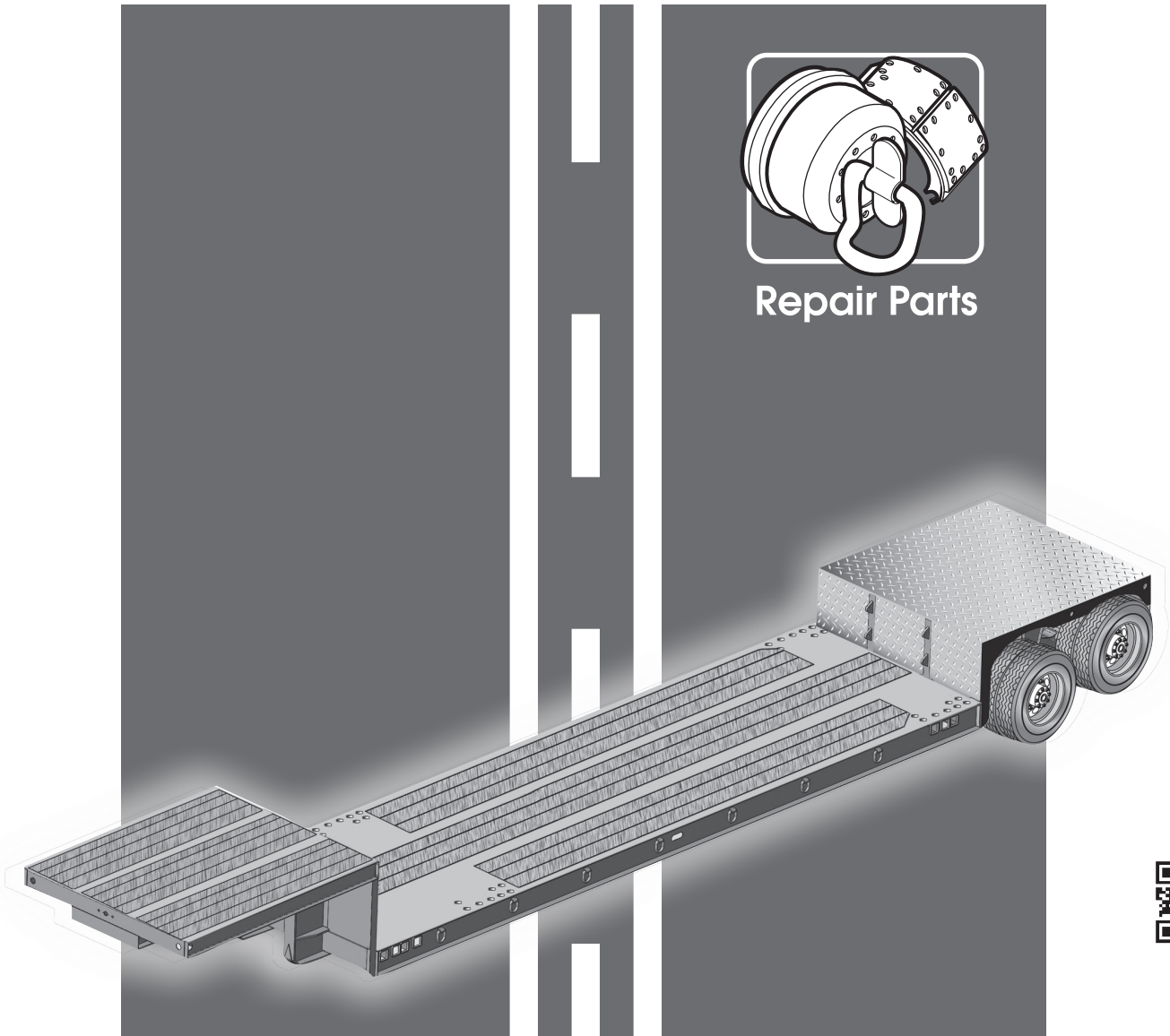


MP-R30TD-15
Serial Numbers Q31823 thru Q31834

R30TD TRAILER



Repair Parts



E. D. ETNYRE & CO. 1333 S. Daysville Road, Oregon, Illinois 61061
Phone: 815-732-2116 or 800-995-2116 Fax: 800-521-1107 www.etnyre.com

MP-R30TD-15

R30TD TRAILER PARTS MANUAL

HOW TO ORDER PARTS

To assure prompt delivery when ordering parts, please furnish the following information: **1)** Complete name and address of consignee. **2)** Method of shipment preferred. **3)** Is shipment to be prepaid or collect? **4)** Serial numbers of units to which parts apply. **5)** Complete part numbers and descriptions. **6)** Any special instructions.

Specify unit serial number when ordering parts!

WARRANTY

E. D. Etnyre & Co. warrants to the original Purchaser, its new product to be free from defects in material and workmanship for a period of one (1) year after date of delivery to original Purchaser. The obligation of the Company is limited to repairing or replacing any defective part returned to the Company and will not be responsible for consequential damages or any further loss by reason of such defect.

The company excludes all implied warranties of merchantability and fitness for a particular purpose. There are no warranties, express or implied, which extend beyond the description of the goods contained in this contract.

This warranty does not obligate the Company to bear the cost of machine transportation in connection with the replacement or repair of defective parts, nor does it guarantee repair or replacement of any parts on which unauthorized repairs or alterations have been made or for components not manufactured by the Company except to the extent of the warranty given by the original Manufacturer.

This warranty does not apply to:

- (1) Normal start-up services, normal maintenance services or adjustments usually performed by the selling dealer, factory service representative or customer personnel.
- (2) Any product manufactured by E. D. Etnyre & Co. purchased or subjected to rental use.
- (3) Any product or part thereof which shows improper operation, improper maintenance, abuse, neglect, damage or modification after shipment from factory.
- (4) Any product or part thereof damaged or lost in shipment. Inspection for damage should be made before acceptance or signing any delivery documents releasing responsibility of the delivering carrier.

This warranty and foregoing obligations are in lieu of all other obligations and liabilities including negligence and all warranties of merchantability or otherwise, express or implied in fact or by law.



E. D. Etnyre & Co., Oregon, Illinois 61061-9778

1333 South Daysville Road Phone: 800-995-2116 Fax: 800-521-1107 www.etnyre.com

Safety Precautions, Hazard Seriousness Level

You will find safety information boxes throughout this manual. These boxes contain information alerting you to situations or actions to avoid.

Signal words (DANGER, WARNING and CAUTION) are used to identify levels of hazard seriousness. Their selection is based on the likely consequence of human interaction with a hazard. Definitions of hazard levels are as follows.



DANGER - Immediate hazards which **will** result in severe personal injury or death.



WARNING - Hazards or unsafe practices which **could** result in severe personal injury or death.



CAUTION - Hazards or unsafe practices which could result in minor personal injury or product or property damage.

CALIFORNIA

Proposition 65 WARNING

Diesel engine exhaust and some of its constituents are known to the State of California to cause cancer, birth defects, and other reproductive harm.

Please note this warning and remember -

Always start and operate an engine in a well ventilated area;

If in an enclosed area, vent the exhaust to the outside;

Do not modify or tamper with the exhaust system.



WARNING

Do not use this trailer for any operation which is not described in this manual.

If you have any questions about operation of this trailer, contact the Etnyre Service Department at

1-800-995-2116 or 1-815-732-2116.

Operations that are not approved could cause serious injury or death.



WARNING

FLUROELASTOMER HANDLING

Some O-rings and seals used in this vehicle are made from fluoroelastomers. When used under design conditions, fluoroelastomers do not require special handling. However, when fluoroelastomers are heated to temperatures beyond their design temperature (around 600° Fahrenheit), decomposition may occur with the formation of hydrofluoric acid. Hydrofluoric acid can be extremely corrosive to human tissue if not handled properly.

A degraded seal may appear as a charred or black sticky mass. Do not touch either the seal or the surrounding equipment without wearing neoprene or PVC gloves if degradation is suspected. Wash parts and equipment with 10% lime water (calcium hydroxide solution) to neutralize any hydrofluoric acid.

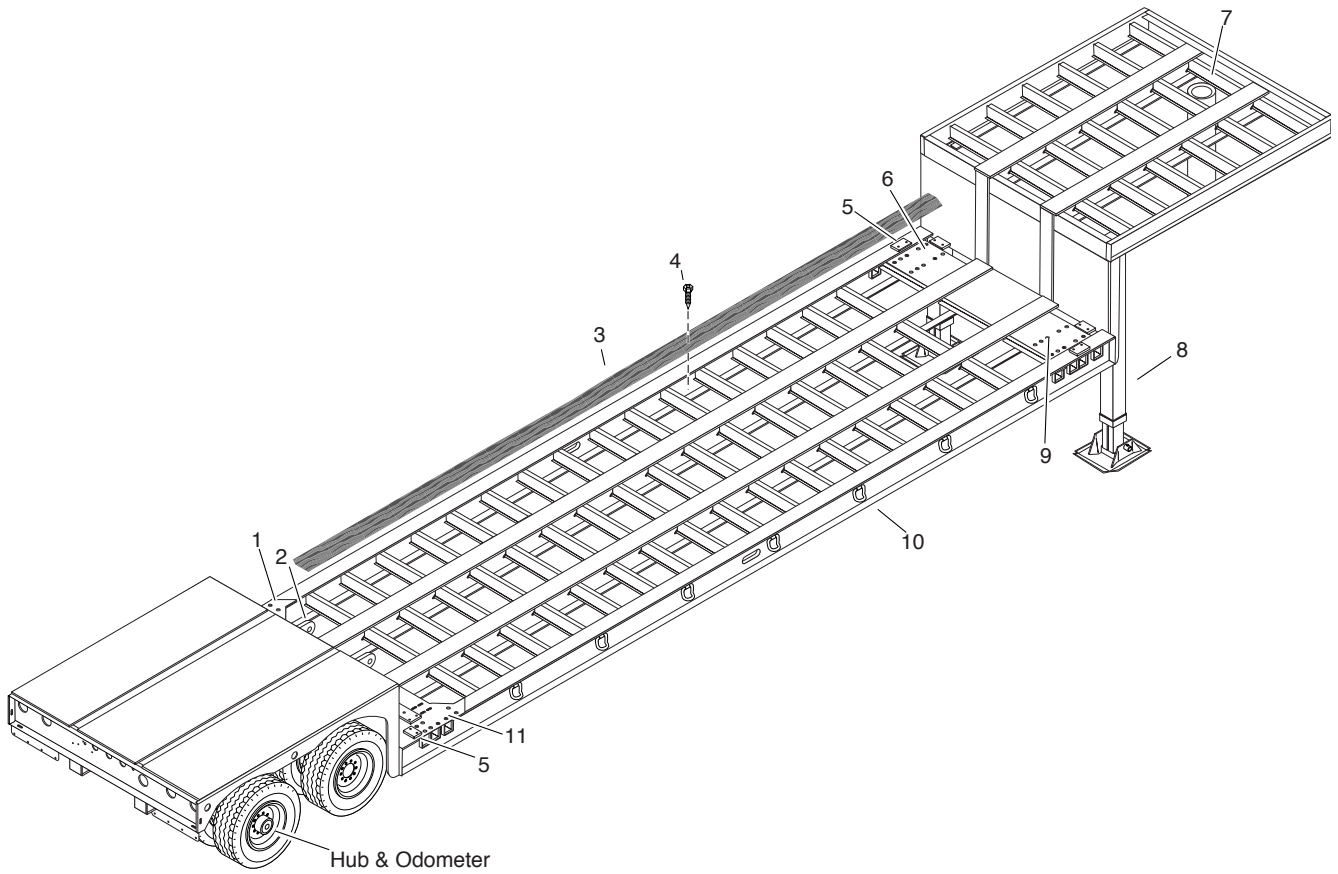
If contact with the skin occurs, wash the affected areas immediately with water. Then rub a 2.5 calcium gluconate gel into the skin until there is no further irritation, while seeking prompt medical attention.

Note to Physicians: For advice or treatment of HF burns, call the DuPont Medical Emergency number, 1-800-441-3637.

Table Of Contents

HOW TO ORDER PARTS	1
WARRANTY	1
Safety Precautions,	2
Hazard Seriousness Level.....	2
DECALS & ID	
General Identification.....	4
Decal Location.....	5
SUSPENSION	
Hendrickson Suspension Assembly	6
Hendrickson Suspension Assembly	7
Limiter Chain	8
UNDERCARRIAGE	
2 Speed landing Legs - Q563101	9
Steel Hubs and Cast Drums - HN (Tapered) Spindles....	10
Tire & Wheel Assemblies.....	11
BRAKES	
Brake Kit.....	12
ELECTRICAL	
Electrical Group, LED - Q519546.....	14
SCHEMATICS	
Electrical Schematic - ABS 4S / 2M.....	15
Air Schematic	16
AXLE	
Axle.....	18
INDEX	19
COMMENT / SUGGESTION FORM.	20

General Identification



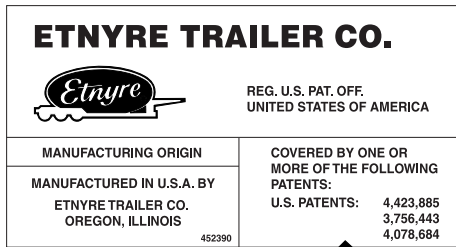
REF	PART NO.	QTY	DESCRIPTION	REF	PART NO.	QTY	DESCRIPTION
1	Q563303	4	Pad Eye-Rear				
2	Q563096	1	Plate-Mounting, LH Rear				
3	6321035	AR	Board-Apitong				
4	6100648	AR	Screw-3/16" x 3.00"				
5	Q563098	8	Plate-Stopper				
6	Q563094	1	Plate-Mounting, LH Front				
7	Q400449	1	Kingpin				
8	Q563101	2	Landing Gear Installation				
9	Q563122	1	Plate-Mounting, RH Front				
10	Q400200	14	Ring-Lash				
11	Q563125	1	Plate-Mounting, RH Rear				

Decal Location

⚠ WARNING

For proper Trailer Operation:
 Check to insure that the kingpin is locked into the tractor fifth wheel.
 Check to insure that all air and electrical systems are connected and operate.
 Inspect trailer frame structure.
 Read and understand the manuals before operating or performing maintenance.

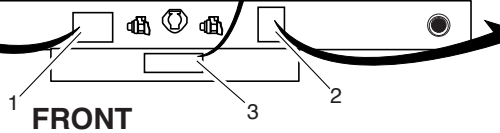
Q452415



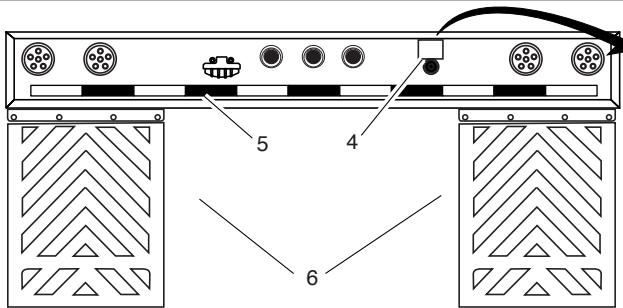
⚠ WARNING

Do not attempt any operation which is not described in the manuals.
 Other operations could cause serious injury or death.
 Read, understand and follow the manuals when operating or performing maintenance.
 Please notify Etnyre Service if you bought this machine used.
 For service, instructions, or to get manuals, call Etnyre Service at 800-995-2116.

3390678A



FRONT



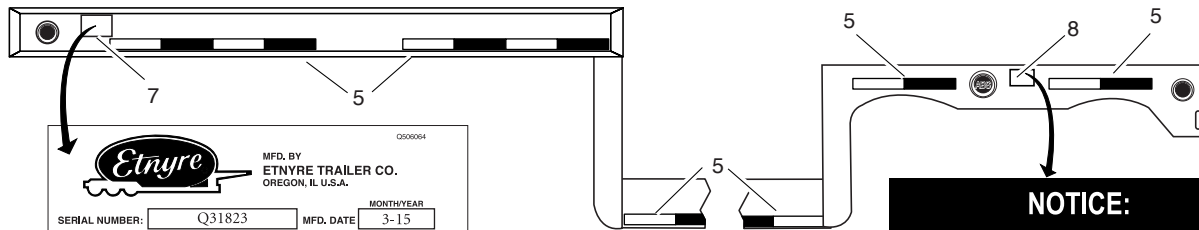
REAR

MANUAL RAISE and LOWER

In - Off
Out - On

NORMAL HIGHWAY OPERATION
 When vehicle is in motion, switch must be in "Off" position for normal height control valve automatic operation.
RAISING and LOWERING
 To raise or lower vehicle, place switch in "On" position and regulate the height of the vehicle

Q512963



LEFT SIDE

Etnyre MFD. BY ETNYRE TRAILER CO. OREGON, IL U.S.A.

Q506064

SERIAL NUMBER: MFD. DATE:

GVWR: KG (LBS)

GAWR: KG (LBS) ALL AXLES

WITH TIRES RIMS, DUALS

INFLATION PRESSURE KPa (PSI) COLD

THIS VEHICLE CONFORMS TO ALL APPLICABLE FEDERAL MOTOR VEHICLE SAFETY STANDARDS IN EFFECT ON THE DATE OF MANUFACTURE SHOWN ABOVE.

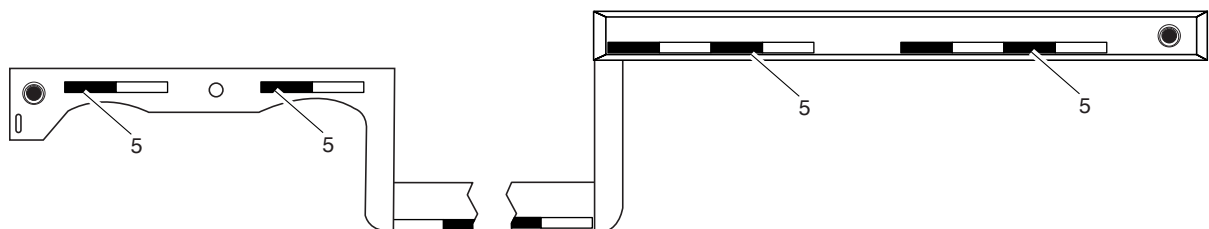
VIN: WEIGHT: (LBS)

CLASSIFICATION: TRAILER MODEL:

NOTICE:

If the ABS indicator lamp comes on *and* stays on when you apply the brakes to a *moving* vehicle, the trailer ABS is not working properly. The ABS must be serviced as soon as possible upon completion of your trip to ensure full anti-lock braking capability.

TP-95172 **MERITOR WABCO** Rev. 7/01

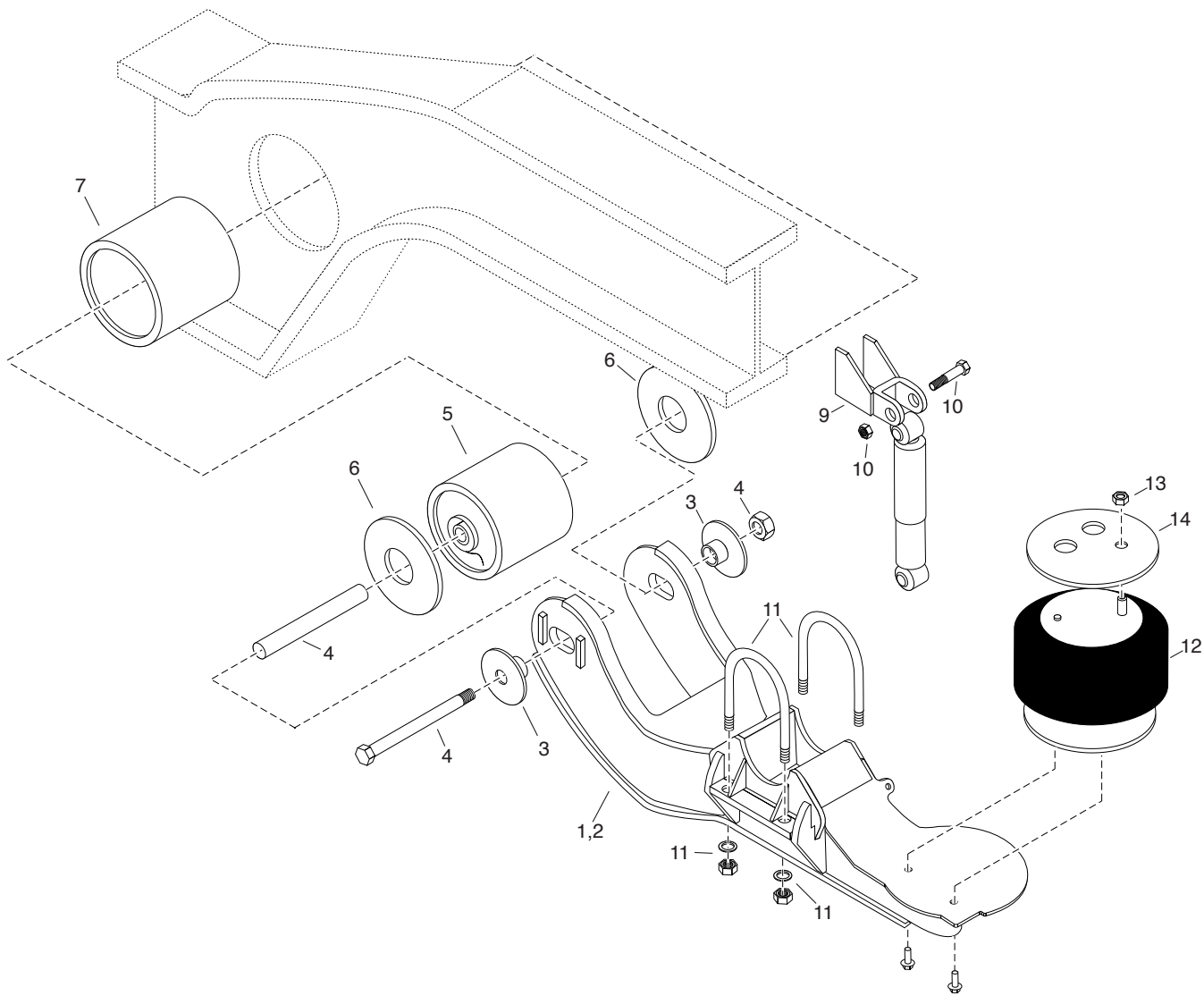


RIGHT SIDE

REF	PART NO.	QTY	DESCRIPTION	REF	PART NO.	QTY	DESCRIPTION
1	Q452415	1	Decal-Warning, Kingpin Is Locked	5	2790527	60	Tape-Conspicuity, 2 In., Red/White
2	3390678A	1	Decal-Warning, Manuals	6	XB30232	2	Splash Guard
3	Q452390	1	Plate-Patent, Trailer	7	Q506064	1	Plate-VIN, Trailer
4	Q512963	1	Decal-Manual Raise and Lower	8	6320704	1	Notice-ABS Lamp

Hendrickson Suspension Assembly 6450710

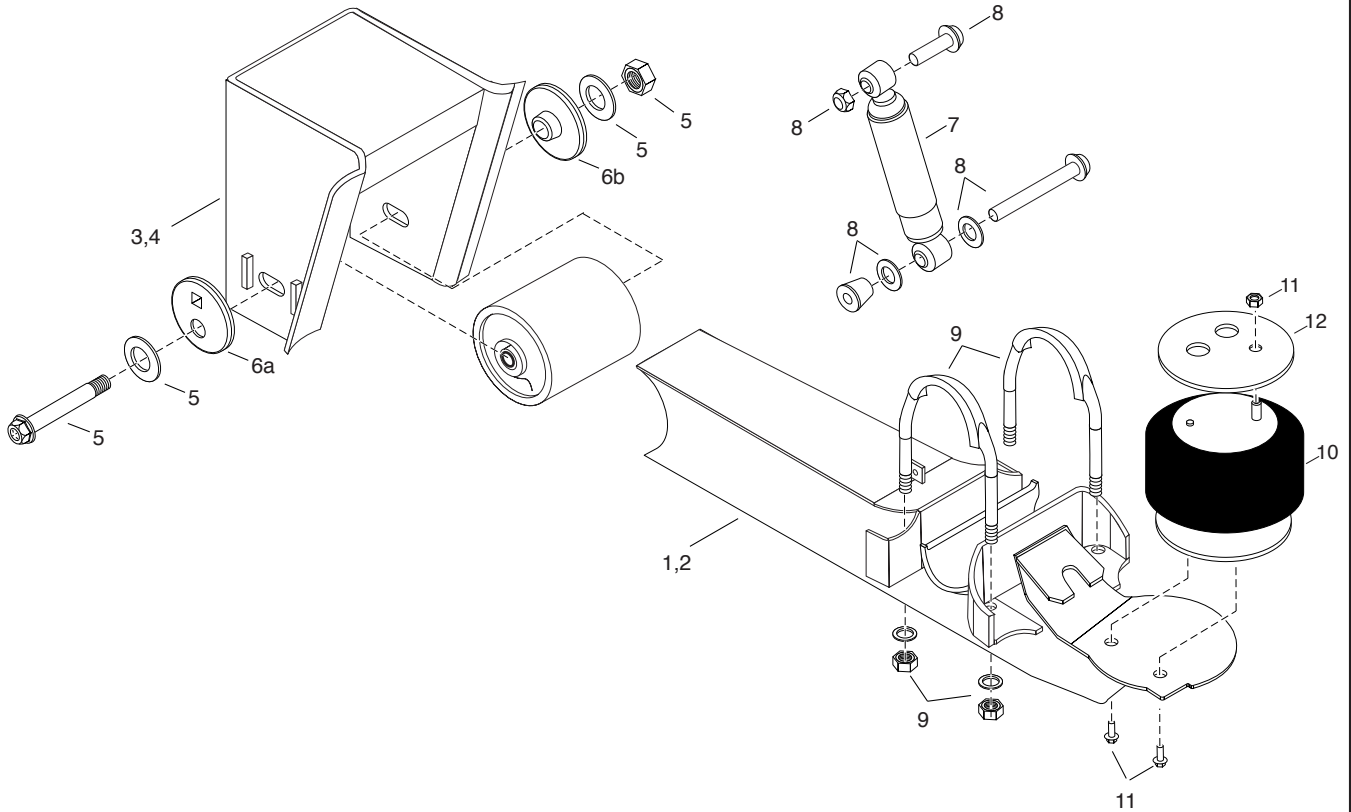
SUSPENSION



REF	PART NO.	QTY	DESCRIPTION	REF	PART NO.	QTY	DESCRIPTION
1	S-20131-1	1	Beam & Axle Seat Asm				
2	S-20131-2	1	Beam & Axle Seat Asm				
3	Q502874	4	Alignment Collar				
4	Q499134	2	Pivot Bolt Kit				
5	Q492054	2	Bushing Asm				
6	Q498615	4	Wear Pad Bushing				
7	S-7342	2	Tube Sleeve				
8	6451519	2	Shock Absorber				
9	S-2592	2	Shock Clevis				
10	S-2157	1	Shock Bolt Kit				
11	PAR2155	1	U-Bolt Kit				
12	Q488170	2	Air Spring				
13	S-20033	2	Air Spring Bolt Kit				
14	S-21209	2	Air Spring Mounding Plate				

Hendrickson Suspension Assembly

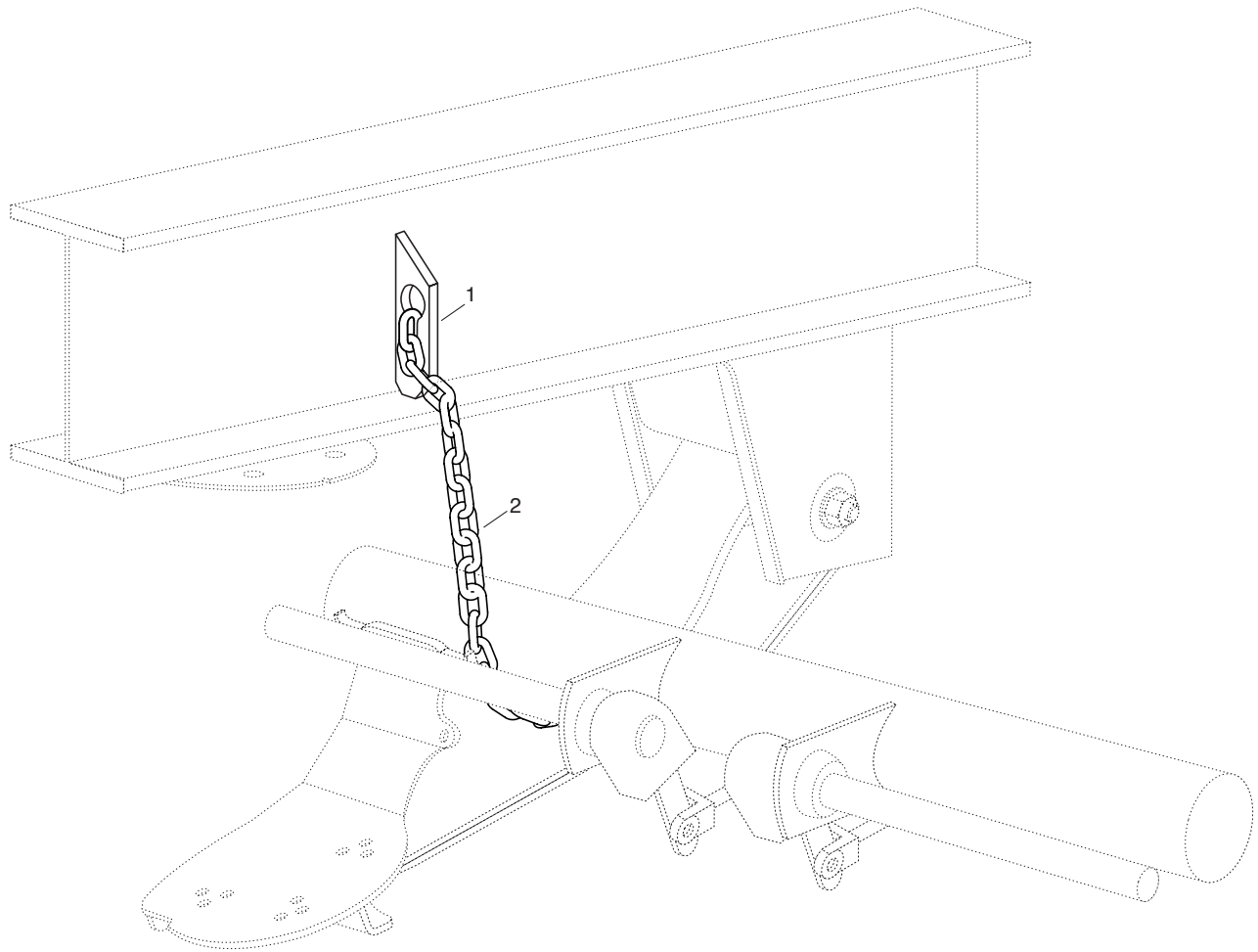
6453055



SUSPENSION

REF	PART NO.	QTY	DESCRIPTI ON	REF	PART NO.	QTY	DESCRIPTION
1	S-24186-1	1	Beam & Axle Seat Asm-Roadside				
2	S-24186-2	1	Beam & Axle Seat Asm-Curbside				
3	S-22827-3	1	Frame Bracket Asm-Roadside				
4	S-22827-4	1	Frame Bracket Asm-Curbside				
5	S-24679	2	Pivot Bolt Kit				
6a	S-20925	2	Alignment Collar-Eccentric				
6b	S-20924	2	Alignment Collar-Concentric				
7	S-23743	2	Shock Absorber				
8	S24185/2	2	Shock Bolt Kit				
9	S-21140/4	4	U-Bolt Kit				
10	S-20124	2	Air Spring				
11	S-20033/2	2	Air Spring Bolt Kit				
12	S-21209	2	Air Spring Mounting Plate				

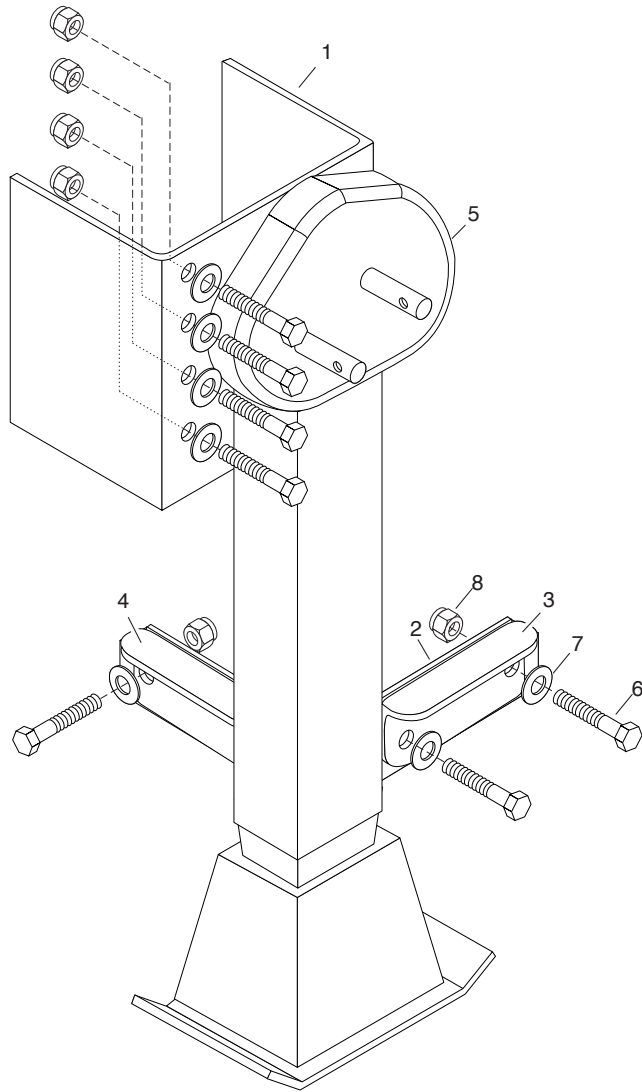
Limiter Chain
Q543365



SUSPENSION

REF	PART NO.	QTY	DESCRIPTION	REF	PART NO.	QTY	DESCRIPTION
1	LD12027	2	Bracket-Chain Lift				
2	Q543364	2	Chain Assembly				

2 Speed landing Legs - Q563101

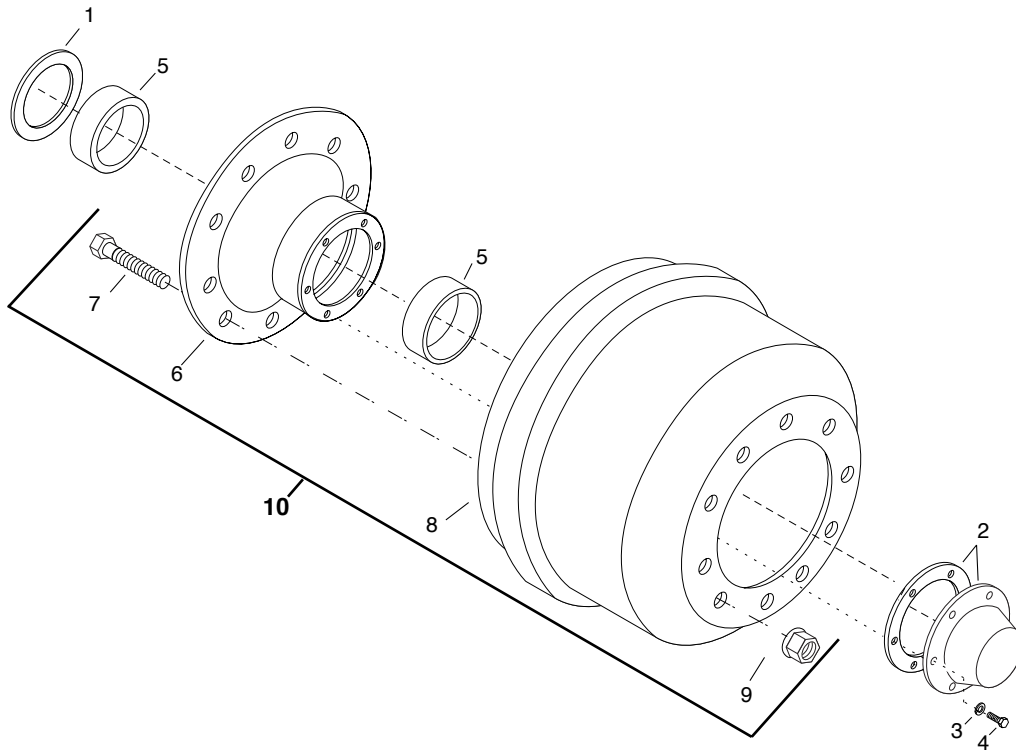


UNDERCARRIAGE

REF	PART NO.	QTY	DESCRIPTION	REF	PART NO.	QTY	DESCRIPTION
1	Q563102	2	Bracket-Landing Gear Mount				
2	Q542521	4	Plate-Landing Gear Mount				
3	Q563103	2	Brace-Landing Gear				
4	Q563104	2	Brace-Landing Gear				
5	6452871	1	Landing Gear-2 Speed				
6	0223512	24	Screw-Hex, 0.63"NC x 1.75", PD, GR8				
7	Q015125	24	Washer-Flat, 5/8"				
8	9419530	24	Nut-Hex,Lock Insert, 0.62", 301, PD				

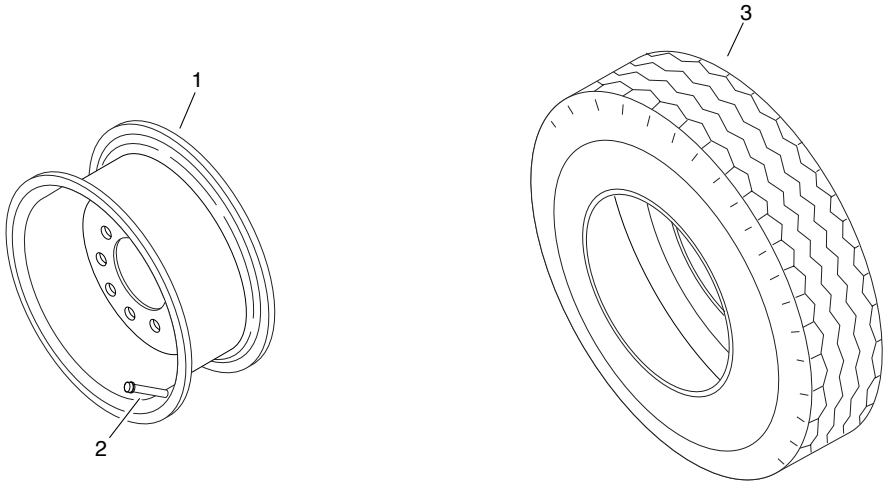
Specify Unit Serial No., Part No., & Part Description

Steel Hubs and Cast Drums - HN (Tapered) Spindles Hub and Drum - 6453284 with ABS



REF	PART NO.	QTY	DESCRIPTION	REF	PART NO.	QTY	DESCRIPTION
1	Q476230	2	Seal-Oil / Grease	8*	Q525211	1	Drum, 16.5" x 7.00"
2	Q413457	2	Hub Cab & Gasket	9*		8	Nut-Flange, 22mm Hex
3	Q015155	6	Washer-Lock, 5/16"	10	6453284	1	Hub & Drum Assembly
4	Q016836	6	Capscrew-5/16"UNC x 3/4", Gr5				<i>*(Includes Ref #'s 6-9, but NOT Ref # 5)</i>
5	6452774	1	Axle Bearing Kit				
6*		1	Hub				
7*		8	Wheel Stud				

Tire & Wheel Assemblies

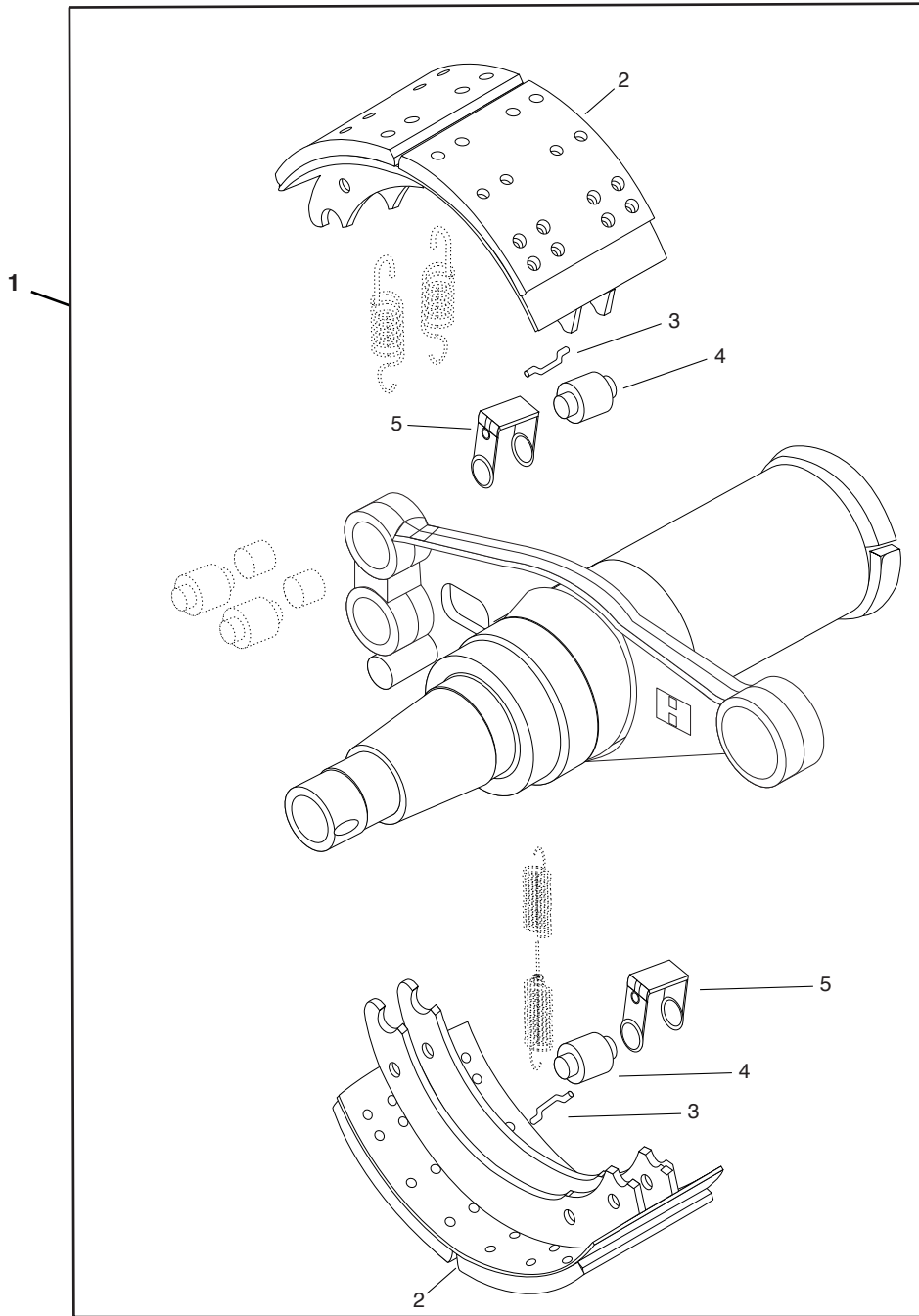


UNDERCARRIAGE

REF	PART NO.	QTY	DESCRIPTION	REF	PART NO.	QTY	DESCRIPTION
1	6451378	8	Wheel-Disc,Steel,22.5 x 8.25 (PW)				
2	6450266	8	Valve-Tire, Tubeless				
3	6453135	8	Tire-11R22.5 14-G, ST250				

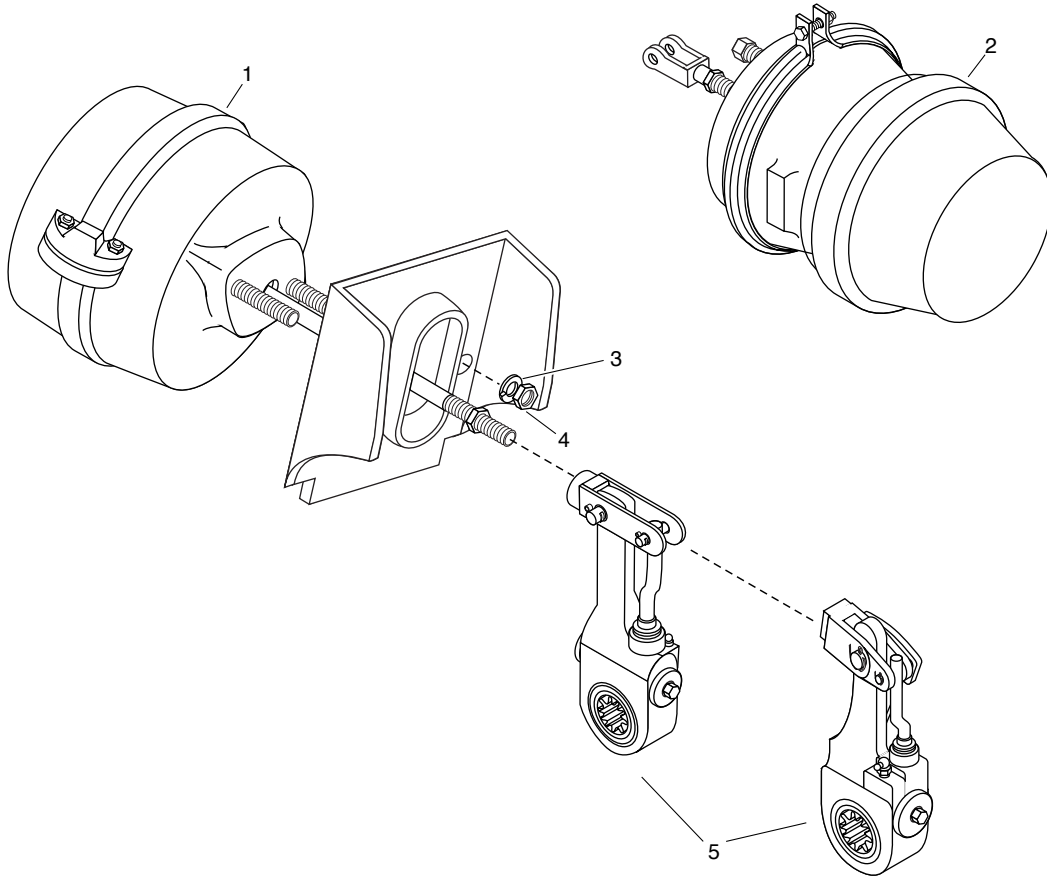
Specify Unit Serial No., Part No., & Part Description

Brake Kit



REF	PART NO.	QTY	DESCRIPTION	REF	PART NO.	QTY	DESCRIPTION
1	Q559443	1	Shoe Kit-Brake, 16.5 x 7 Brakes 20K Rating (Includes Ref #'s 2-5)				
2		2	Brake Shoe-Lined				
3		2	Pin-Spring, Return				
4		2	Roller-Shoe, Brake				
5		2	Clip-Spring, Roller				

Air Chamber - Slack Adjuster

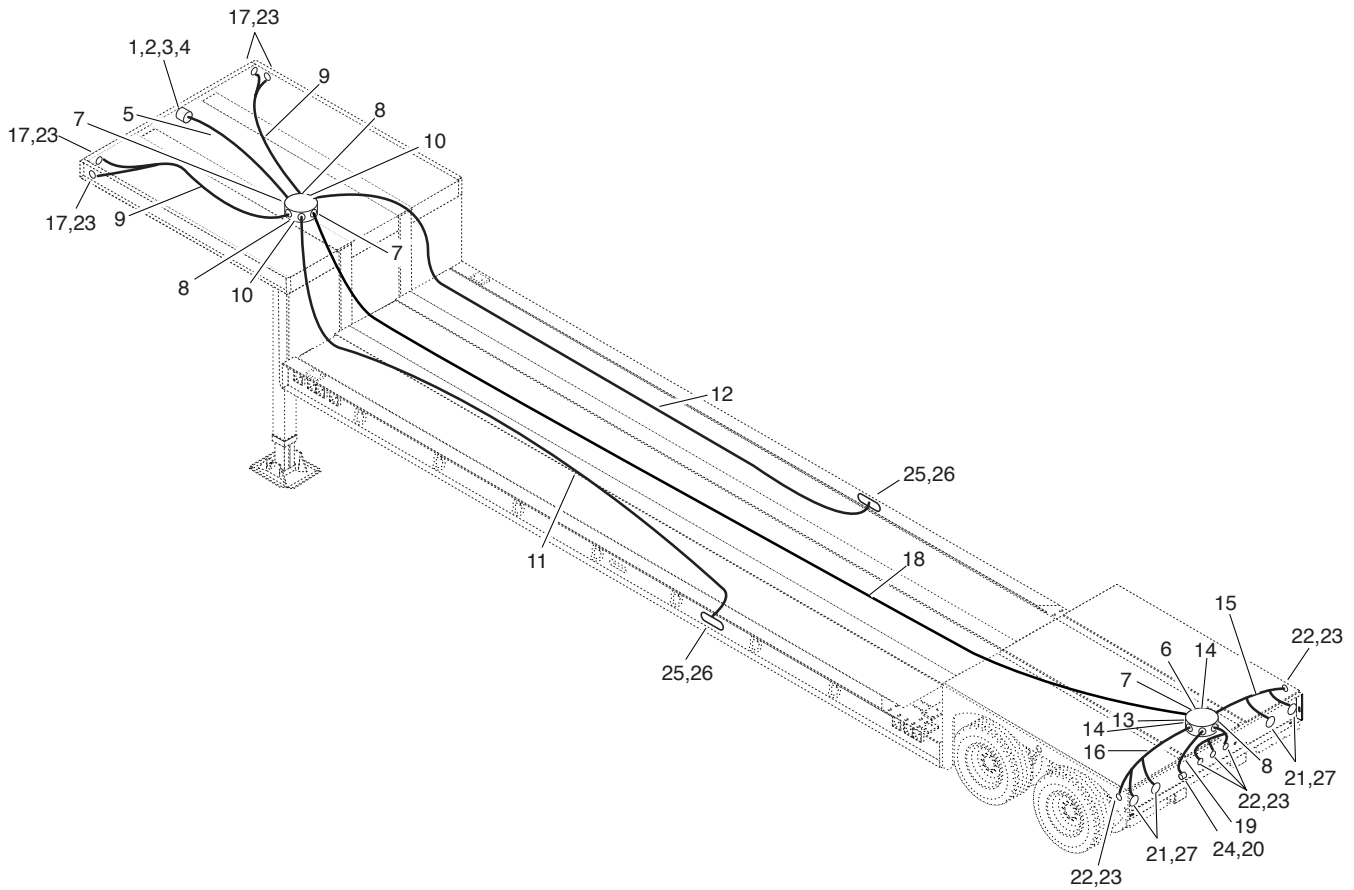


BRAKES

REF	PART NO.	QTY	DESCRIPTION	REF	PART NO.	QTY	DESCRIPTION
1	Q527685	1	Air Chamber Asm, w/o Clevis				
2	Q537460	1	Air Chamber Asm- Type 30/30				
3	Q015160	2	5/8" Lockwasher Pkg				
4	Q015030	2	Nut				
5	6450827	2	Slack Adjuster-Auto, 6.0 - 28 Spline				

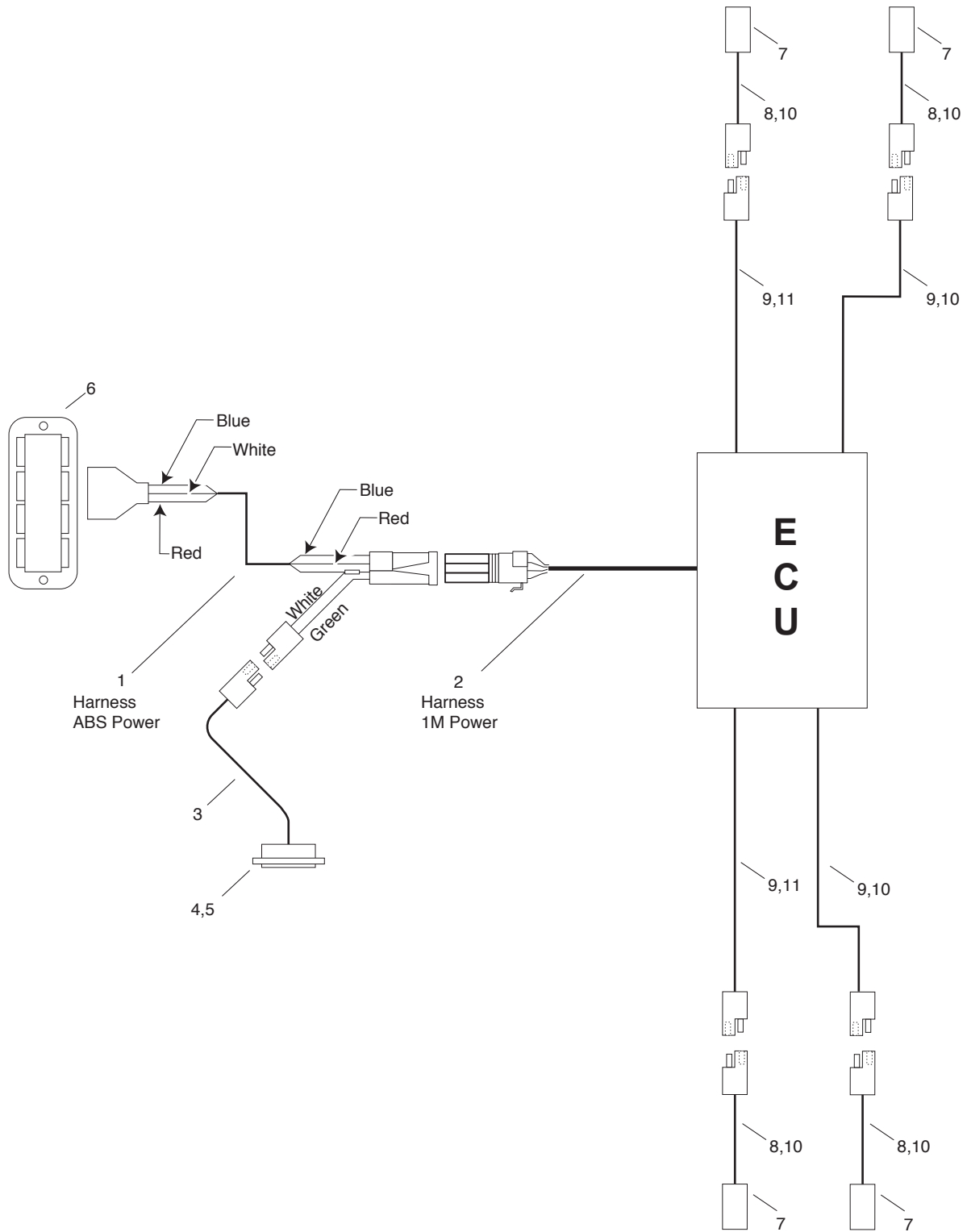
Electrical Group, LED - Q519546

ELECTRICAL



REF	PART NO.	QTY	DESCRIPTION	REF	PART NO.	QTY	DESCRIPTION
1	Q402185	1	Socket Asm-7 Pole w/Boot	15	6703109	1	Harness-Marker,S-T-T,RH,LED
2	Q018465	2	CPSCR-1/4 UNC x 1,Gr 5	16	6703110	1	Harness-Marker,S-T-T,LH,LED
3	Q015154	2	Lockwasher-1/4"	17	6702368	4	Lamp-M/C,Mdl 10,Amber,12V,LED
4	Q015054	2	Nut-Hex,Full,1/4 UNC	18	6703111	1	Harness-Lower,Identification Light
5	6702504	50	Cable-7 Way, Berkshire, #81012	19	6703112	1	Harness-Clear,Marker,Center
6	Q495725	2	Distribution Module-8 Outlet	20	6702116	1	Bracket-License Lamp
7	Q492774	3	Connector Asm-3/4"	21	Q478488	4	Grommet-4" Lamp
8	Q495726	4	Connector Asm-3/8",2 Cond Cable	22	6702369	5	Lamp-M/C,Mdl 10,Red,12V,LED
9	6703128	2	Harness-Mrkr/Clrnc,2Plug,LED	23	Q450083	9	Grommet-2 1/2",Clearance Light
10	Q495728	4	Connctor-Flat,3 Cond Cable	24	6702455	1	Lamp-License Plate
11	6703460	1	Harness-Turn/Tail,LED	25	6702364	2	Lamp-Mdl 60,Turn/Stop,12V,LED
12	6703285	1	Harness-Brake,LED	26	Q475295	2	Grommet-Oval
13	Q492775	5	Connector Asm-Filler	27	6703071	4	Lamp-Stop/Turn,Tail,6 Diode,LED
14	Q495727	2	Connector Asm-1/2",3 Cond Cable				

Electrical Schematic - ABS 4S / 2M Q565711

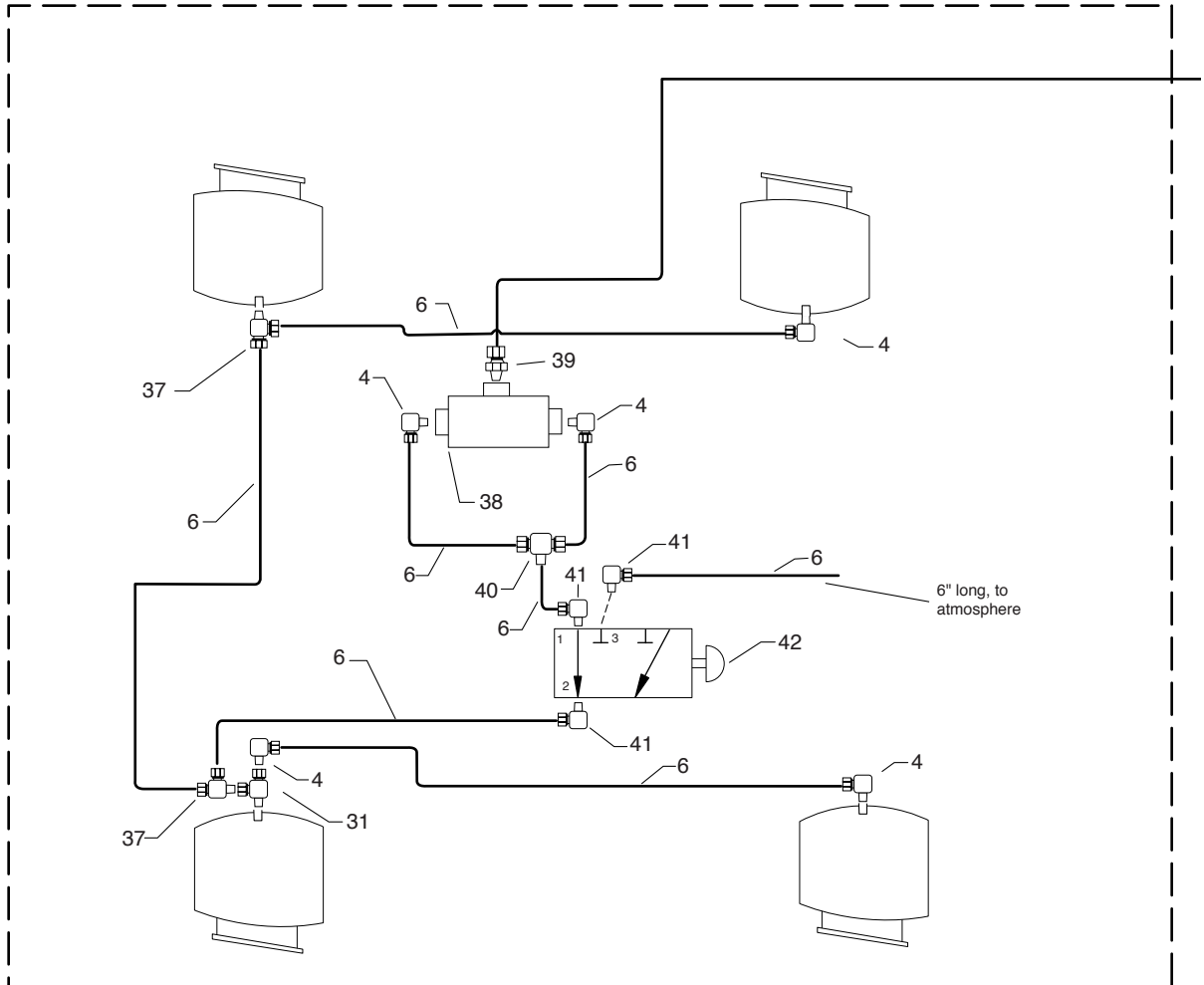
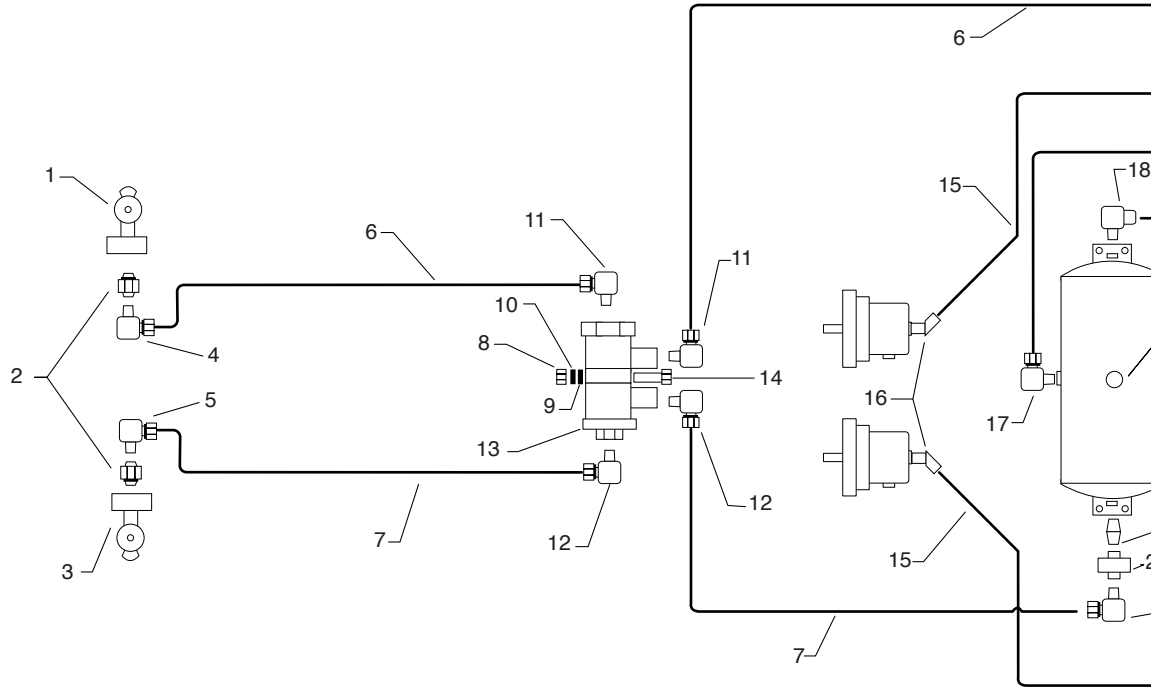


SCHEMATICS

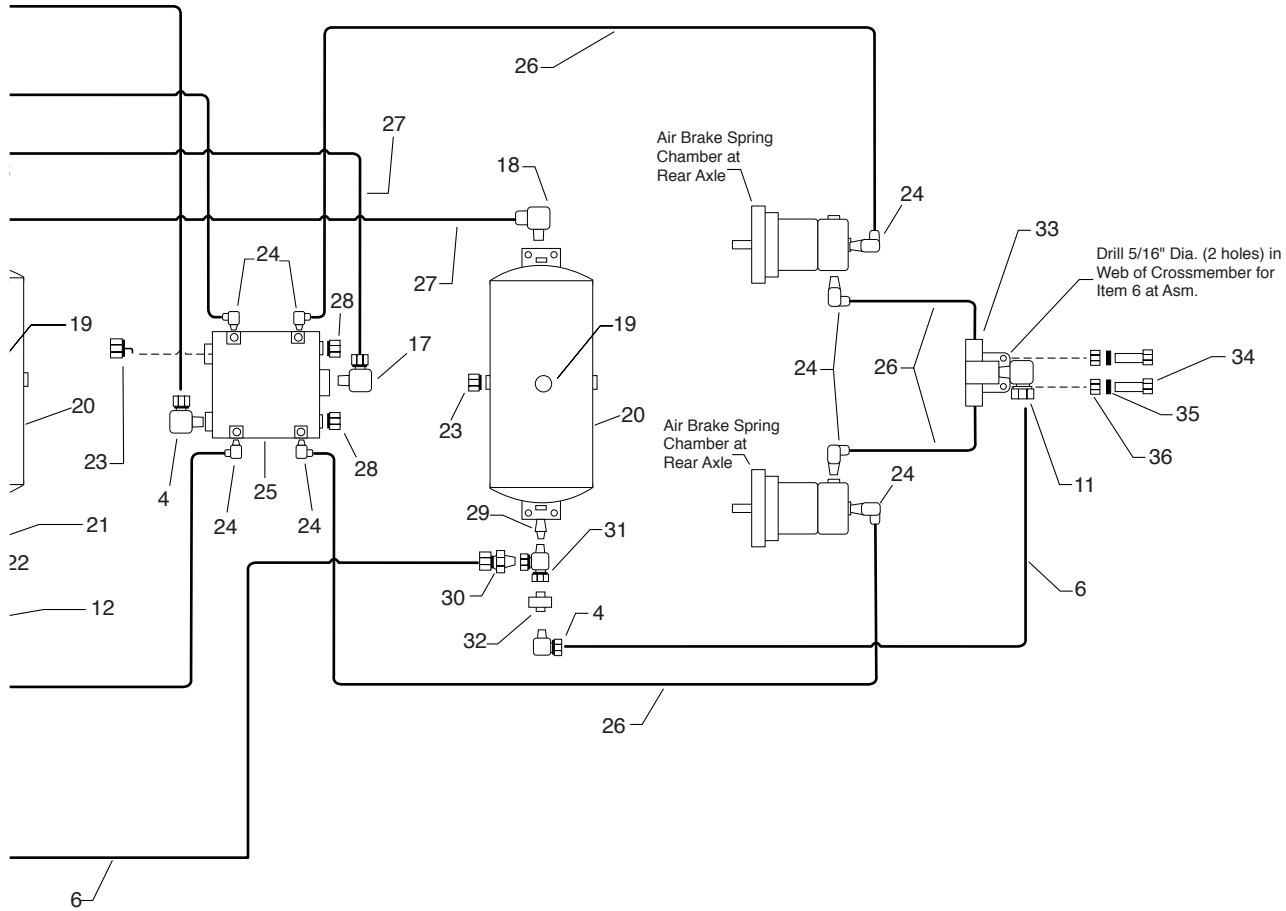
REF	PART NO.	QTY	DESCRIPTION	REF	PART NO.	QTY	DESCRIPTION
1	6702353	1	Harness-ABS Power TL52100 x 180"	7	6450956	4	Sensor Spring Clip
2	6703016	1	Harness-1M Power Cable	8	6451097	4	Sensor Asm-441 032 808 0
3	6702354	1	Harness-ABS Lamp Jumper-SR	9	6451076	4	Cable-Sensor, 1.8M Long
4	6702505	1	Light-Marker, 2" ABS, TL 30257Y	10	6700169	32	Tie-Plt-4 SCP-0, Black, Extra Long
5	6702151	1	Grommet-Mounting	11	6451088	2	Cable Sensor-3M, w/ Plug
6	Q495727	2	Connector, 0.5" ID (5 Cond. Cable)				

Specify Unit Serial No., Part No., & Part Description

Air Schematic



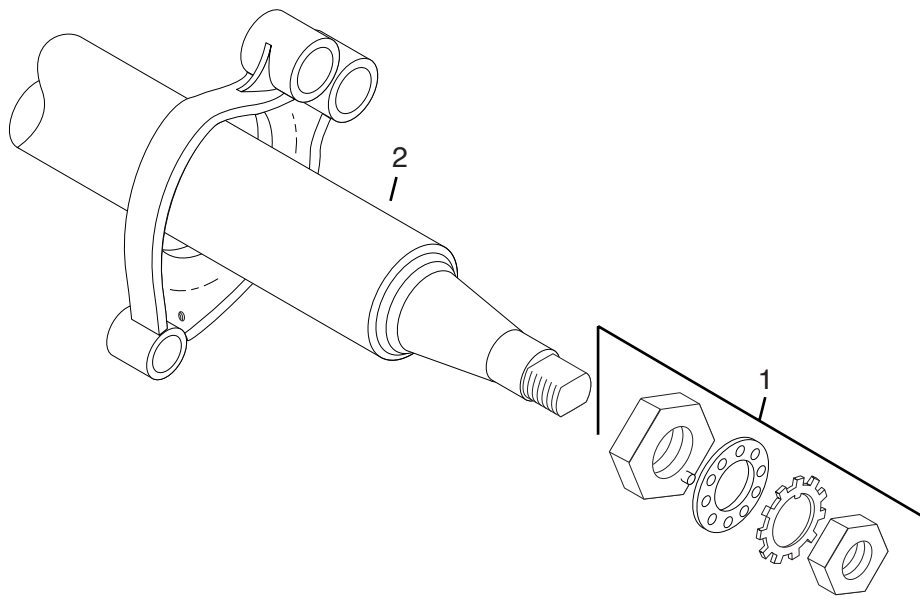
Air Schematic



SCHEMATICS

REF	PART NO.	QTY	DESCRIPTION	REF	PART NO.	QTY	DESCRIPTION
1	6601254	1	Coupling-Hose, w/ Filter, Service	22	6450962	1	Valve-Pressure Protection
2	Q400278	2	Clamping Stud	23	0273469	2	Plug-Auto, 3/4"
3	6601253	1	Coupling-Hose, w/ Filter, Emergency	24	6602465	8	Elbow-06MP-06FP
4	6600832	4	Elbow, 04MP-06MT	25	6451271	1	Valve-ECU
5	6602476	1	Elbow, 08FP-08MT	26	6602380-14	4	Hose Asm-Air Brake, 0.38" ID x 20"
6	6309162	AR	Tube-Nylon, Air, 3/8"	27	Q431000	2	Tube-Nylon, Air, 0.63"
7	6309169	AR	Tube-Nylon, Air, 1/2"	28	0444867	2	Plug-Auto, 3/8"
8	0120376	1	Nut-Hex, 0.31"NC	29	Q012836	1	06MP-04MP
9	0120214	1	Washer-Lock, 0.31", Spring	30	6600831	2	04MP-06MT
10	0446363	1	Washer-Flat, 0.31"	31	Q461540	2	Tee-Street, 1/4"
11	6600945	3	Elbow, 06MP-06MT	32	6450575	1	Valve-Pressure Protect
12	6600942	3	Elbow, 06MP-08MT	33	6450351	1	Tee-Frame, Bogie
13	6450963	1	Valve-Emergency Release	34	Q018466	2	1/4" - 20 x 1-1/4" Hex Head
14	6100328	1	Screw-Hex, 0.31"NC x 2.75"	35	Q015154	2	Lockwasher, 1/4"
15	6602380-16	2	Hose-Air Brake, 0.38" x 104"	36	Q015054	2	Nut-Hex, Full, 1/4"
16	0444494	2	Elbow-45°, 06FP-06MP	37	6600829	2	Tee-06MT-04MP-06MT
17	6602445	2	Elbow-10MT-12MP	38	Q559522	1	Air Kit-AKH 236-3
18	Q444344	2	Elbow-Male 90°, #1469X10X6	39	6600831	2	ST, 04MP-06MT
19	6600162	2	Cock-Drain, 0.25"	40	6600830	1	Tee-Arbk, 06MT-06MT-06MT
20	6450357	2	Air Reservoir	41	6604255	3	Elbow,06MP-06MT
21	4470271	1	06MP-06MP	42	6604429	1	Valve-Air, 3 Way

Axle



REF	PART NO.	QTY	DESCRIPTION	REF	PART NO.	QTY	DESCRIPTION
1	Q527019	2	Spindle Nut Kit				
2	Q551368-01	1	Axle Asm-Spicer Model D-22				

Part No.	Page No.	Part No.	Page No.	Part No.	Page No.	Part No.	Page No.	Part No.	Page No.
0120214	17	6702116	14	Q495727	15				
0120376	17	6702151	15	Q495728	14				
0223512	9	6702353	15	Q498615	6				
0273469	17	6702354	15	Q499134	6				
0444494	17	6702364	14	Q502874	6				
0444867	17	6702368	14	Q506064	5				
0446363	17	6702369	14	Q512963	5				
2790527	5	6702455	14	Q525211	10				
3390678A	5	6702504	14	Q527019	18				
4470271	17	6702505	15	Q527685	13				
6100328	17	6703016	15	Q537460	13				
6100648	4	6703071	14	Q542521	9				
6309162	17	6703109	14	Q543364	8				
6309169	17	6703110	14	Q543365	8				
6320704	5	6703111	14	Q551368-01	18				
6321035	4	6703112	14	Q559443	12				
6450266	11	6703128	14	Q559522	17				
6450351	17	6703285	14	Q563094	4				
6450357	17	6703460	14	Q563096	4				
6450575	17	9419530	9	Q563098	4				
6450710	6	LD12027	8	Q563101	4				
6450827	13	PAR2155	6	Q563102	9				
6450956	15	Q012836	17	Q563103	9				
6450962	17	Q015030	13	Q563104	9				
6450963	17	Q015054	14	Q563122	4				
6451076	15	Q015054	17	Q563125	4				
6451088	15	Q015125	9	Q563303	4				
6451097	15	Q015154	14	Q565711	15				
6451271	17	Q015154	17	S-20033	6				
6451378	11	Q015155	10	S-20033/2	7				
6451519	6	Q015160	13	S-20124	7				
6452774	10	Q016836	10	S-20131-1	6				
6452871	9	Q018465	14	S-20131-2	6				
6453055	7	Q018466	17	S-20924	7				
6453135	11	Q400200	4	S-20925	7				
6453284	10	Q400278	17	S-21140/4	7				
6453284	10	Q400449	4	S-21209	6				
6600162	17	Q402185	14	S-21209	7				
6600829	17	Q413457	10	S-2157 6					
6600830	17	Q431000	17	S-22827-3	7				
6600831	17	Q444344	17	S-22827-4	7				
6600831	17	Q450083	14	S-23743	7				
6600832	17	Q452390	5	S-24186-1	7				
6600942	17	Q452415	5	S-24186-2	7				
6600945	17	Q461540	17	S-24679	7				
6601253	17	Q475295	14	S-2592 6					
6601254	17	Q476230	10	S-7342 6					
6602380-14	17	Q478488	14	S24185/2	7				
6602380-16	17	Q488170	6	XB30232	5				
6602445	17	Q492054	6						
6602465	17	Q492774	14						
6602476	17	Q492775	14						
6604255	17	Q495725	14						
6604429	17	Q495726	14						
6700169	15	Q495727	14						



Something Wrong with this manual?

If you find inaccurate or confusing information in this manual, or just have a suggestion for improvement, please let us know.

Mail or FAX this form to us at: E. D. ETNYRE & CO. 1333 S. Daysville Rd. Oregon, Illinois 61061 • Fax: 800-521-1107 • www.etnyre.com

Attn: Service Manager

Recommended changes from: _____

Address _____

City, State, Zip _____

Phone _____

Date Sent _____

Manual Number (upper right corner of front cover) _____

Manual Title _____

Explain the problem in the space below.

Page Number	Reference Number	Paragraph Number	Figure Number	Problem (please be specific)