

FABRICS & COLOURS STANDARD COLLECTION



Flokk

Standard Collection

TECHNICAL SPECIFICATIONS

	XTREME by Camira	SELECT by Gabriel	CAPTURE by Gabriel	PATINA by Camira	NEXUS by Camira	NOTE by Gabriel	STEELCUT TRIO 3 by Kvadrat	SIRDAL/SULDAL by GU*	COMFORT+ by Gabriel	PALOMA SOFT by Wollsdorf
COMPOSITION (%)										
Wool	-	85	85	69	-	85	90	-	-	-
Norwegian wool	-	-	-	-	-	-	-	100	-	-
Flax	-	-	-	22	-	-	-	-	-	-
Polyurethane	-	-	-	-	-	-	-	-	12	-
Polyamide	-	15	15	8	-	15	10	-	-	-
Polyester	-	-	-	-	100	-	-	-	51	-
Post-consumer recycled Polyester	100	-	-	-	-	-	-	-	-	-
Recycled Polyester	-	-	-	-	-	-	-	-	37	-
Viscose	-	-	-	1	-	-	-	-	-	-
Cattle hides	-	-	-	-	-	-	-	-	-	100
ENVIRONMENTAL FACTS										
EU Ecolabel	◆	◆	◆	◆	-	◆	◆	-	-	-
Oeko-Tex® Standard 100	◆	◆	◆	◆	◆	◆	-	-	◆	◆
ISO 14001 certified (company)	◆	◆	◆	◆	◆	◆	◆	◆	◆	◆
100% free of heavy metals	◆	◆	◆	◆	◆	◆	◆	◆	◆	◆
ECO2L	-	-	-	-	-	-	-	-	-	◆
Blue Angel RAL-U2 148	-	-	-	-	-	-	-	-	-	◆
Chrome-free leather tanning	-	-	-	-	-	-	-	-	-	◆
Greenguard Gold	-	-	-	-	-	-	◆	-	-	-
Indoor Advantage Gold	◆	-	-	◆	-	-	-	-	-	-
FLAMMABILITY										
BS EN 1021 - Cig. & Match	◆	◆	◆	◆	◆	◆	◆	◆	◆ ³⁾	◆
BS 7176 Low Hazard	◆	-	-	◆	◆ ¹⁾	-	-	-	-	-
BS 7176 Medium Hazard	◆	-	-	◆ ¹⁾	-	-	-	-	-	-
BS 5852 Part 1 0,1 Cig. & Match	-	◆	◆	-	-	◆	◆	-	◆ ¹⁾	-
BS 5852 Crib 5	◆	◆ ¹⁾	◆ ^{1&2)}	◆ ¹⁾	-	◆ ¹⁾	◆ ²⁾	-	-	◆
DIN 4102 BI	◆	-	-	-	-	-	-	-	-	-
NF D 60-013	◆	-	-	-	-	-	-	-	-	-
CA TB 117-2013	-	◆	◆	◆	◆	◆	◆	-	◆	-
IMO MSC 307 (88) Annex 1 part 8	-	◆	-	-	-	◆	◆	◆	-	◆
FASTNESS TO RUBBING										
Dry	4	4-5	4-5	4	4	4-5	4-5	4-5	4-5	1000/4
Wet	4	4-5	4-5	3	4	4	3-5	4	4	80/4
OTHER										
Weight (g/m2)	310	510	475	305	330	510	770	800	385	-
Width (cm)	140	140	140	140	173	140	140	133	140	-
Abrasion (Martindale)	>100 000	200 000	200 000	>100 000	>100 000	200 000	100 000	>57 000	150 000	-
Pilling	4	4	4-5	3	4	4	4	3-4	5	-
Light fastness	6	5-8	5-7	5	5	5-8	6-7	5-7	5-7	6

MAINTENANCE

To be vacuumed with a furniture brush or wiped with a clean, white cloth or sponge slightly dampened with clean lukewarm water.

FOR COMPLETE SPECIFICATION SEE OUR SUPPLIERS WEBISTES

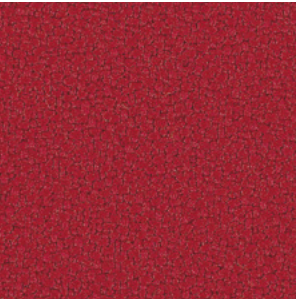
camirafabrics.com
gabriel.dk
gu.no
kvadrat.dk
wollsdorf.com

1) Pass with CMHR foam
2) Pass with flame retardant treatment
3) Pass match with CMHR foam
GU* Gudbrandsdalens Uldvarefabrik

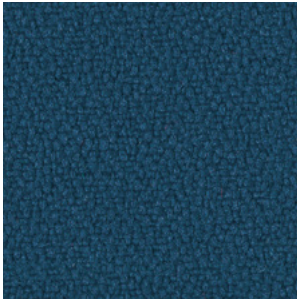
Xtreme – PRICE GROUP 1

100% recycled polyester – crêpe structure – stretchy – durable

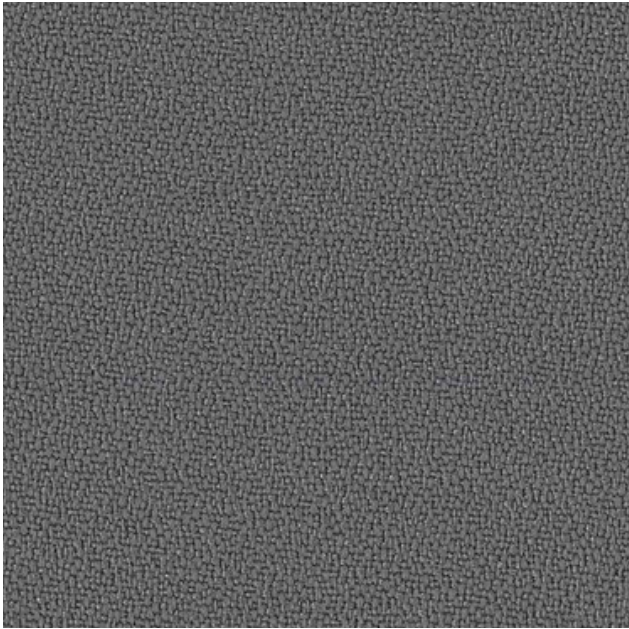
XTREME is a crêpe fabric made from 100% recycled polyester that features exceptional Euro flammability performance. Extra stretch and structure gives an irregular, shiny finish.



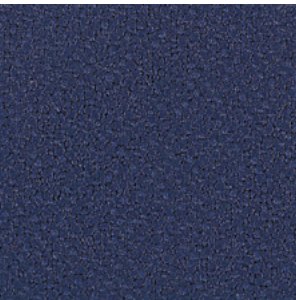
Xtreme – EXR079



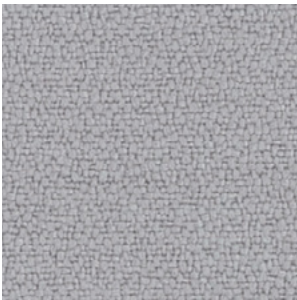
Xtreme – EXR026



Xtreme – EXR081



Xtreme – EXR024



Xtreme – EXR094



Xtreme – EXR145

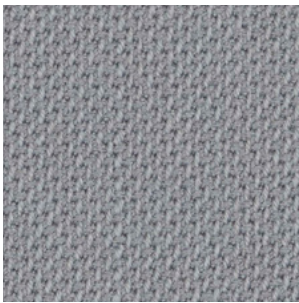


Xtreme – EXR009

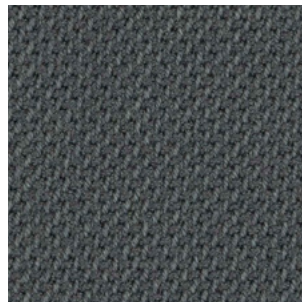
Select – PRICE GROUP 2

New Zealand wool worsted – diagonal relief structure – soft – durable

SELECT is a classic woolen fabric with a tightly woven relief structure, combining excellent softness, stretch and durability. Its rich texture with the interplay of light and shadow add depth to its structure and colours



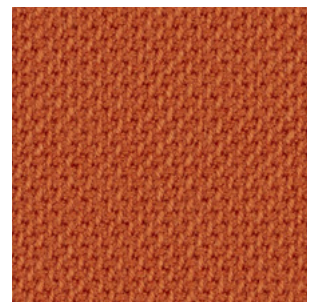
SC 60139



SC 60003



SC 68209



SC 63102



SC 60999



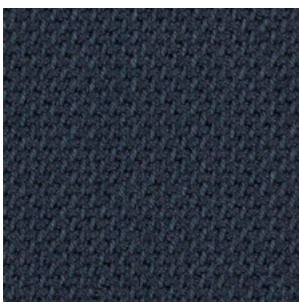
SC 60134



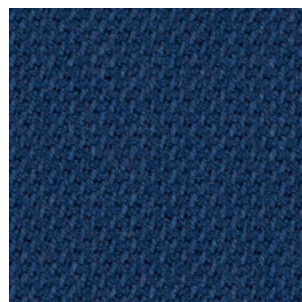
SC 60051



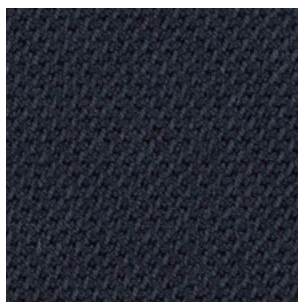
SC 61190



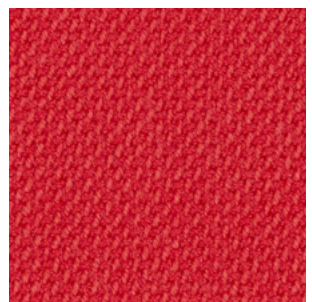
SC 66194



SC 66071



SC 66144



SC 64216

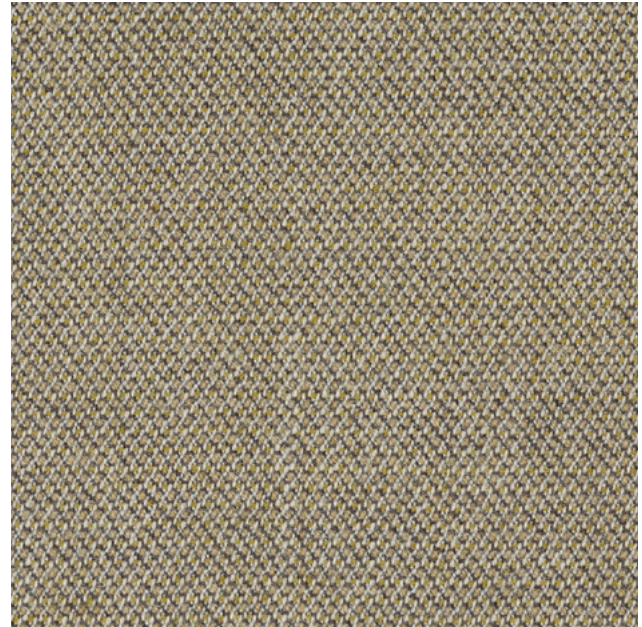
Capture – PRICE GROUP 3

New Zealand wool – lightly felted – soft – durable

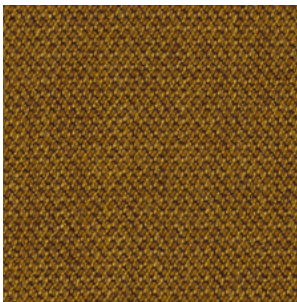
CAPTURE is a lightly felted and multi-coloured wool fabric combining softness, stretch and strength. It fuses light and dark colours to a refined *mélange* pattern in subtle nuances, which add richness and depth to the design.



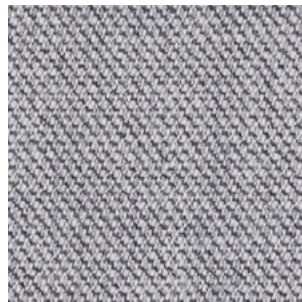
CPT6101



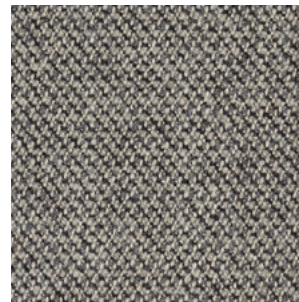
CPT5102



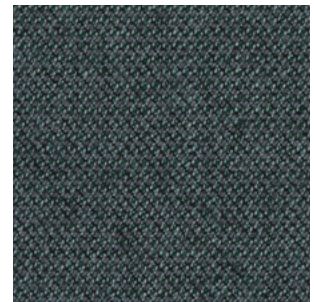
CPT6401



CPT4102



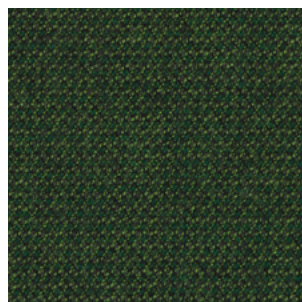
CPT4401



CPT6601



CPT4601



CPT6501



CPT5501

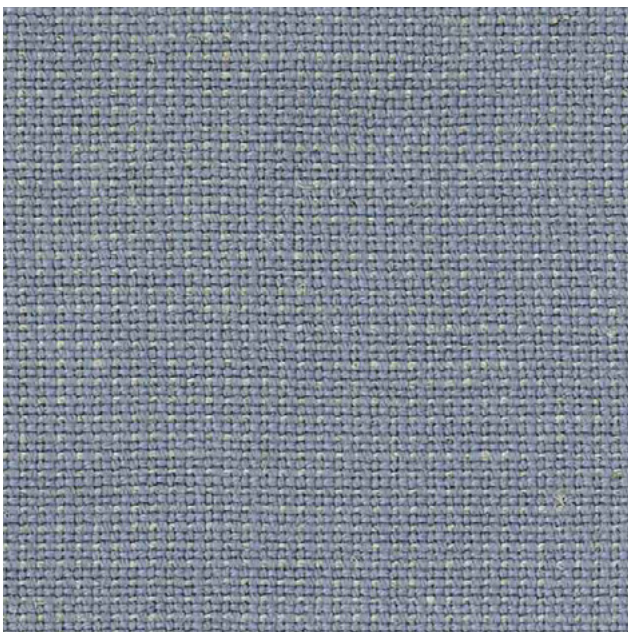


CPT5701

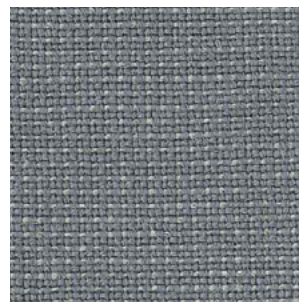
Patina – PRICE GROUP 3

Wool/flax blend - fine structure - delicate feel -
natural mélange effect - durable

PATINA has a high content of natural fibers, combining wool and flax for a delicate feel. Drawing inspiration from Pattern in Nature revealed to us by its fine structure and carefully balanced colours. It is about designing with nature to achieve beauty with performance.



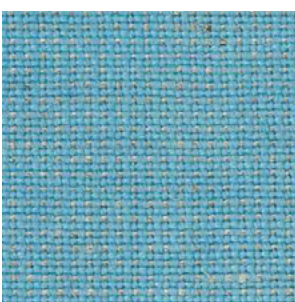
PAT04



PAT34



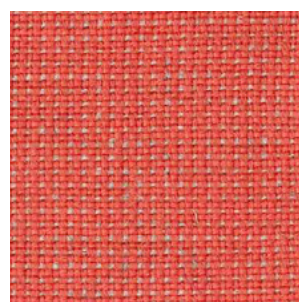
PAT24



PAT01



PAT16

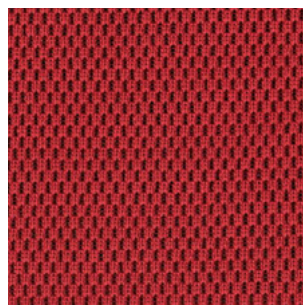


PAT15

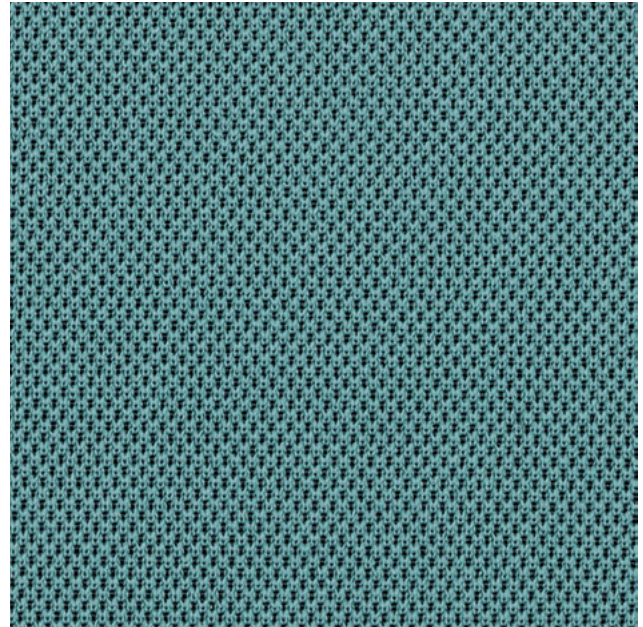
Nexus – PRICE GROUP 3

Polyester knit – Piqué structure – two-dimensional stretch – durable

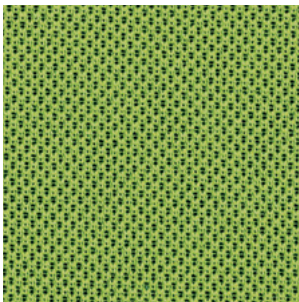
NEXUS is a polyester knit in a sleek and stylish pinprick dot matrix design effect giving a granulated structured surface. The black yarn foundation highlights the structured surface in combination with fresh but subtle colours.



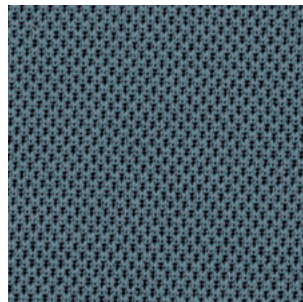
Nexus – NEX16



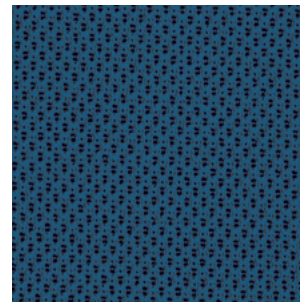
Nexus – NEX10



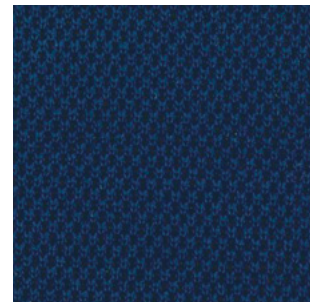
Nexus – NEX05



Nexus – NEX08



Nexus – NEX03



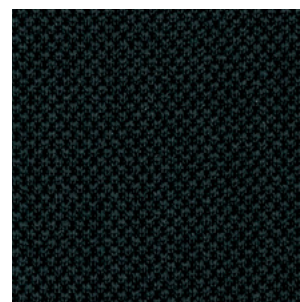
Nexus – NEX15



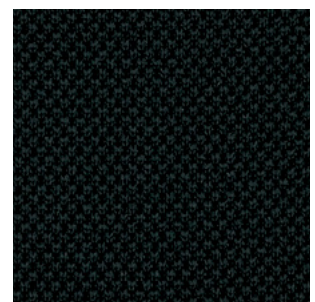
Nexus – NEX07



Nexus – NEX01



Nexus – NEX11

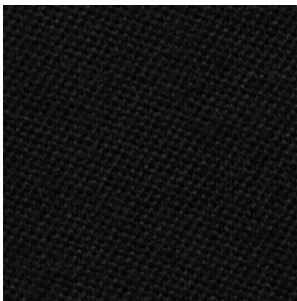


Nexus – NEX13

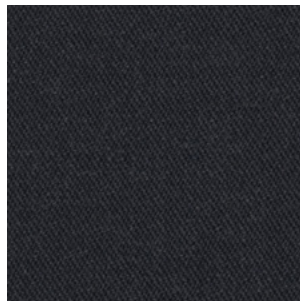
Note – PRICE GROUP 3

New Zealand wool worsted – satin structure – soft – strong

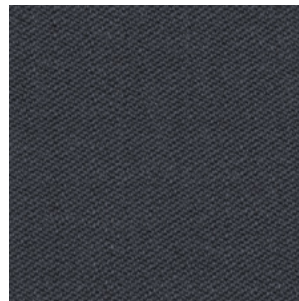
NOTE is a soft and noble fabric which, with its classic satin structure, allows the wool's natural lustre to shine and impress.



Note – NT60999



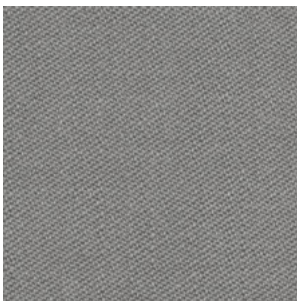
Note – NT60087



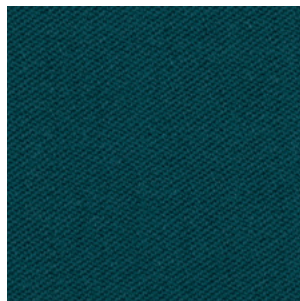
Note – NT60003



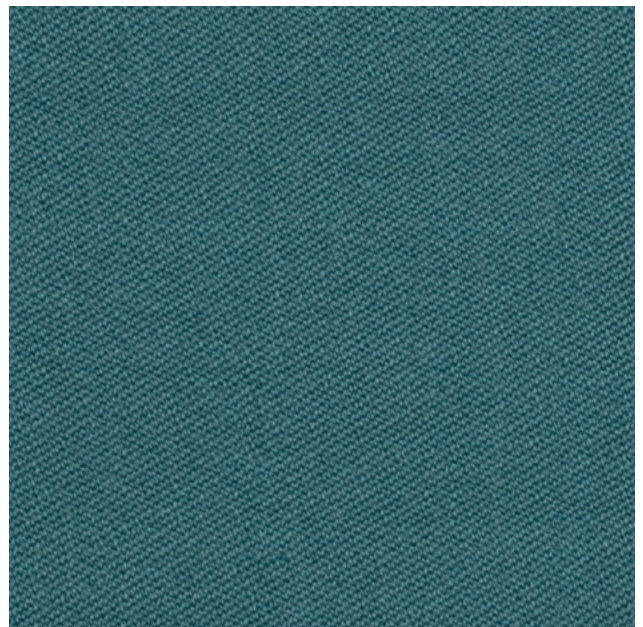
Note – NT60088



Note – NT61148



Note – NT67033



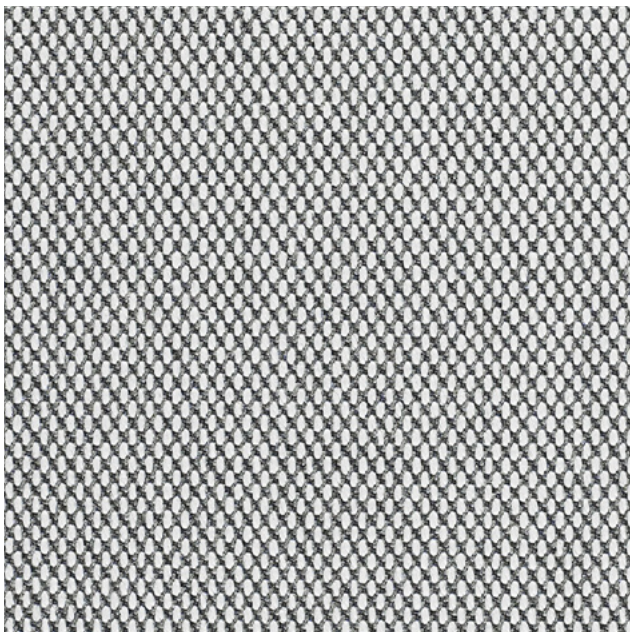
Note – NT67066

Steelcut trio 3 – PRICE GROUP 4

New wool worsted – semi-plain structure – tricoloured 3D effect

solid – hard wearing

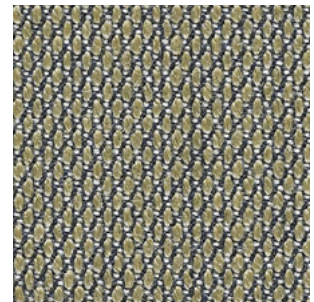
STEELCUT TRIO 3 is a strong worsted wool and polyamide woven fabric, made with three different coloured yarns. The colours and the special weave create a three-dimensional surface where the colours seem to change depending on the angle of perspective.



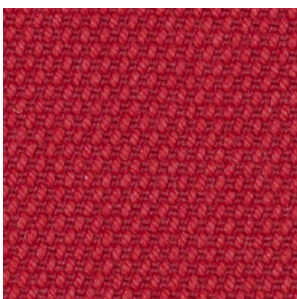
Steelcut Trio 2 – STT133



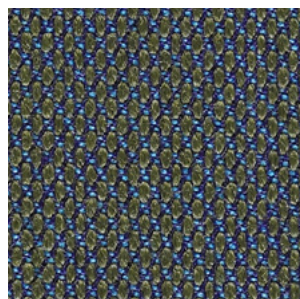
Steelcut Trio 2 – STT153



Steelcut Trio 2 – STT253



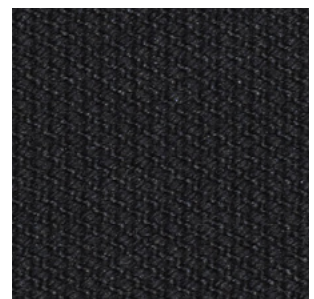
Steelcut Trio 2 – STT1652



Steelcut Trio 2 – STT883



Steelcut Trio 2 – STT383



Steelcut Trio 2 – STT1192

Sirdal and Suldal – PRICE GROUP 4

100% pure Norwegian wool – wollen – granité structure
high resilience – durable

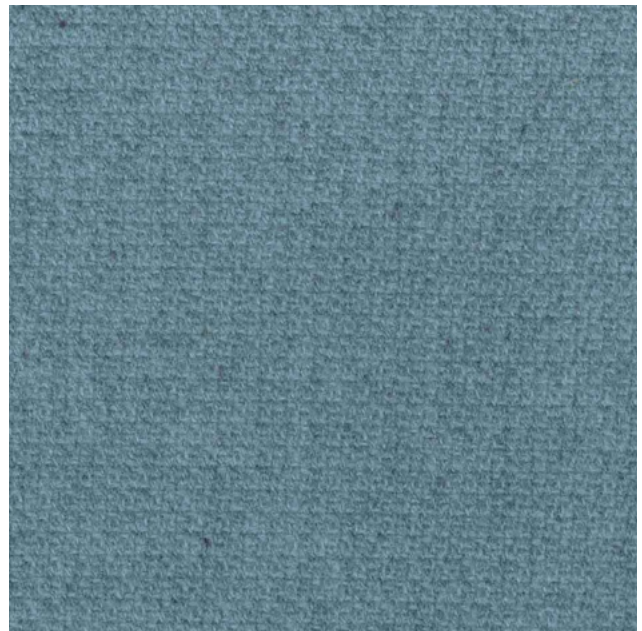
SIRDAL AND SULDAL are part of the 100% Norwegian wool trio Sirdal, Suldal and Setesdal. These fabrics are uniquely short-travelled in every part of the process – 100% pure Norwegian wool manufactured in Norway. Norwegian wool with its distinctive brilliance, resilience and durability is expressed through rich structures that evoke authenticity paired with chic and modern comfort.



Sirdal – SRD 190



Suldal – SUL 180



Suldal – SUL 810



Sirdal – SRD 730

Comfort+ – PRICE GROUP 4

37% recycled polyester – microfibre – soft – hard wearing

COMFORT+ has a uniform stretchability and excellent non-pilling properties. A unique combination of fibres giving a durable soft surface.



Comfort+ – CMF1414



Comfort+ – CMF0049



Comfort+ – CMF0040

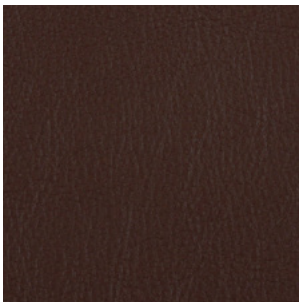


Comfort+ – CMF0050

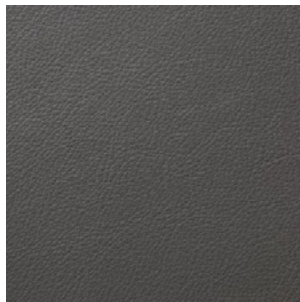
Paloma soft – PRICE GROUP 6

Semi-aniline leather – chrome-free – soft – high durability

A HIGH-QUALITY chrome-free semi-aniline leather. All our standard colours from Paloma have a special finish adding a particular softness to the leather. Excellent friction and breathing properties.



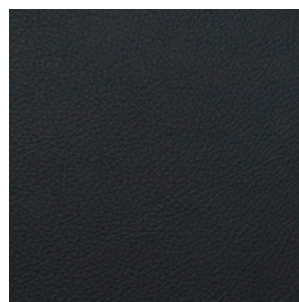
Paloma Soft – ATG55130



Paloma Soft – ATG55206



Paloma Soft – ATG55115



Paloma Soft – ATG55185



Paloma Soft – ATG56100

Please note that colours show in these illustrations may vary from the actual colours.