

 **EMI** Presents
ENVIROair

Single and Multi-Zone Ductless Inverter Split Systems

MZI Series

Replacement Parts Manual

Air Handler (Indoor) Models:

MWHA

Condenser (Outdoor) Models:

MHA/B

Ordering Instructions

Order Parts through your nearest supplier.

When ordering parts, obtain Model Number and Serial Number from data plate on your unit.

Include following information when ordering.

Part Number _____

Part Description _____

Air Handler Model Number _____

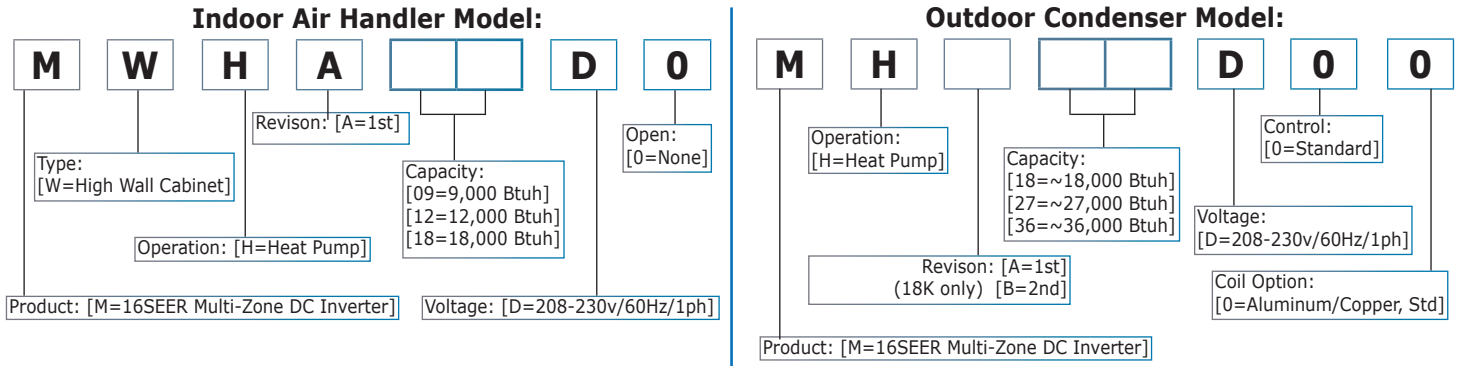
Air Handler Serial Number _____

Condenser Model Number _____

Condenser Serial Number _____



MZI Series Model Decoding



Information and specifications outlined in this manual in effect at the time of printing of this manual. ECR International reserves the right to discontinue, change specifications or system design at any time without notice and without incurring any obligation, whatsoever.

[EMI Limited Warranty](#) applies, 1-year parts and 5-year compressor.

Table of Contents

MZI Series - Active Models

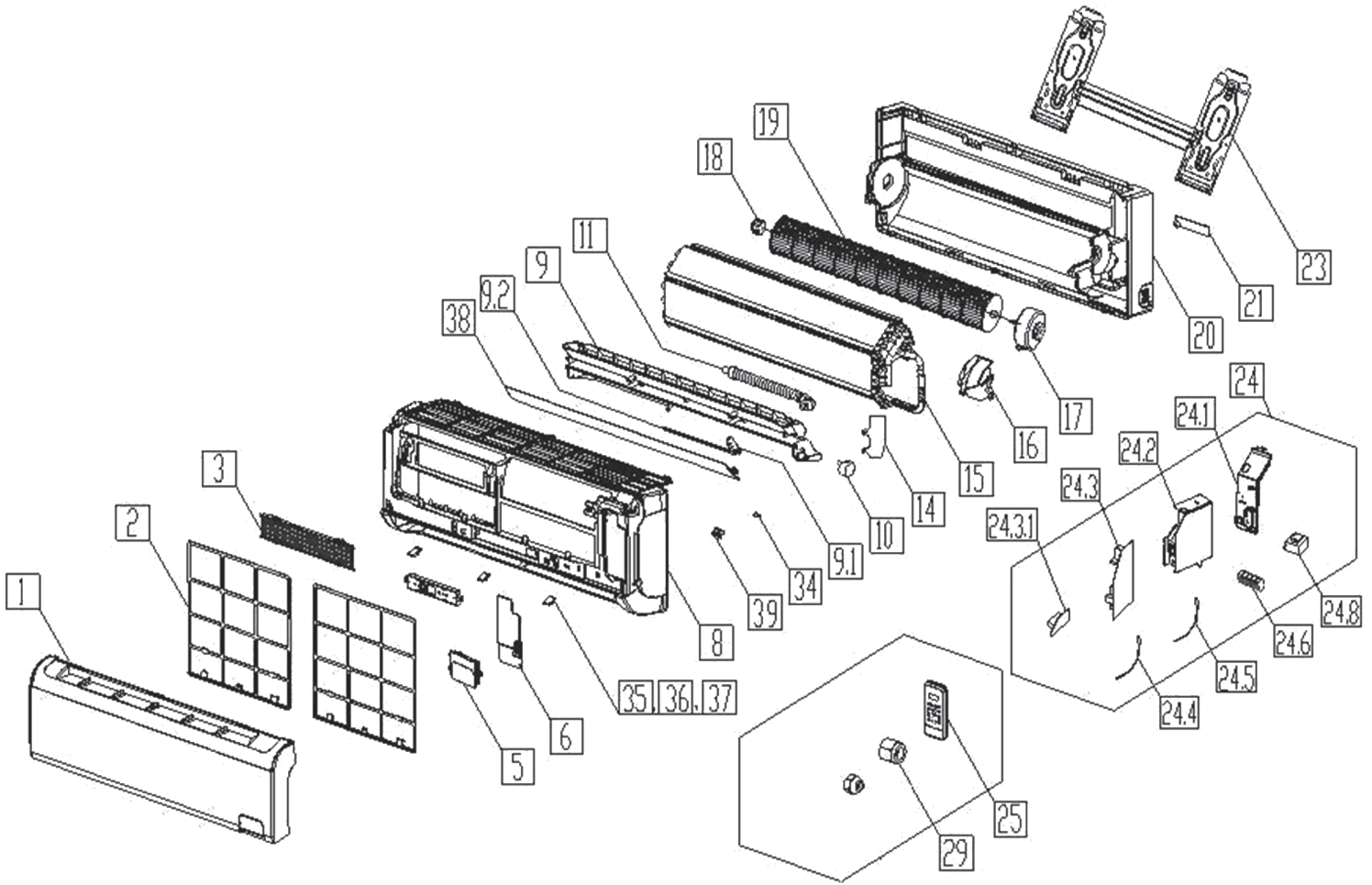
MZI Series MWHA09D0: 9,000 Btuh 230v Heat Pump 16SEER High Wall Air Handler	4
MZI Series MWHA12D0: 12,000 Btuh 230v Heat Pump 16SEER High Wall Air Handler	5
MZI Series MWHA18D0: 18,000 Btuh 230v Heat Pump 16SEER High Wall Air Handler	6
MZI Series MHB18D00: 18,000 Btuh 230v Heat Pump 16SEER Multi-Zone Condenser.....	7
MZI Series MHA27D00: 27,000 Btuh 230v Heat Pump 16SEER Multi-Zone Condenser....	8-11
MZI Series MHA36D00: 36,000 Btuh 230v Heat Pump 16SEER Multi-Zone Condenser..	10-12

MZI Series - Inactive Models

MZI Series MHA18D00: 18,000 Btuh 230v Heat Pump 16SEER Multi-Zone Condenser.	12-13
--	-------

Replacement parts are available for "Inactive Models". Consult Factory for availability, lead times and minimum order quantities.

MZI Series - Active Model 9,000 Btuh 230v Heat Pump MWHA09D0 High-Wall Air Handler

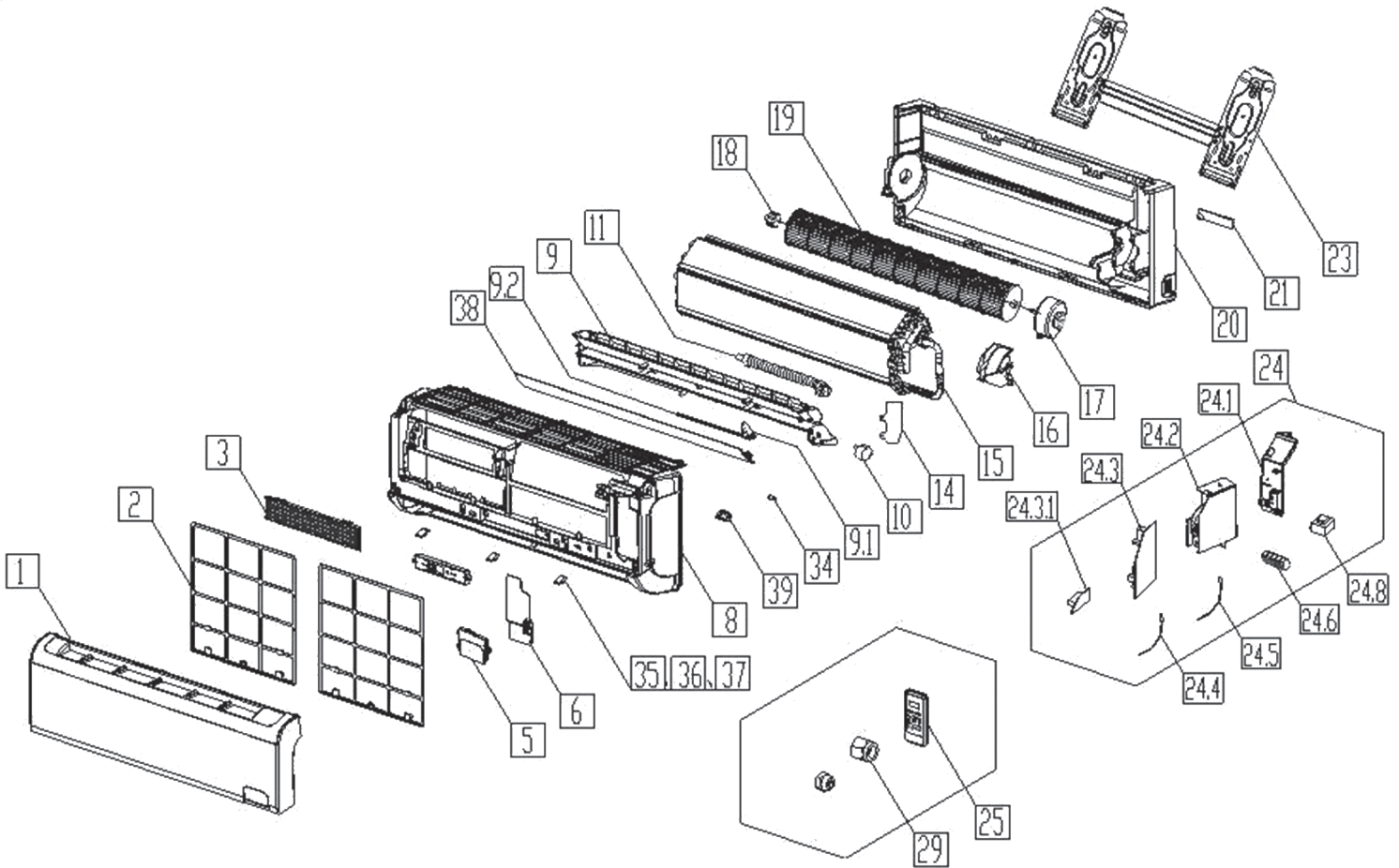


Ref#	Part Number	Description	Qty
1	2011325A3642	Panel assy	1
2	201132591022	Air filter	2
3	201131410703	Air cleaner	1
5	2033323A1413	Display box assy	1
6	#N/A	Electronic Control Box Cover	1
8	201132590918	Panel frame assy	1
9	#N/A	Air outlet assy	1
9.1	201132590445	Vertical vane	10
9.2	201130410358	Louver holder	2
10	202400200006	Louver motor	1
11	201101020037	Drain hose	1
14	#N/A	Waterproof board	1
15	201532590459	Evaporator assy	1
16	#N/A	Fan motor cover	1
17	202400300137	Asynchronous motor	1
18	202730100201	Bearing base	1
19	201100200039	Cross flow fan	1
20	#N/A	Chassis assy	1

Ref#	Part Number	Description	Qty
21	201130100204	Pipe clamp board	1
23	201230390006	Installation plate	1
24	#N/A	Electronic control box assy	1
24.1	#N/A	Electronic Control Box Cover	1
24.2	#N/A	Electronic control box	1
24.3	201352090316	Main control board assy	1
24.4	202433190000	Ambient temperature sensor assy	1
24.5	202301300080	Pipe temperature sensor assy	1
24.6	#N/A	Wire joint	1
24.8	202300900095	Transformer	1
25	240010011	Remote Controller	1
29	201600330002	Nut	1
29	201600330001	Nut	1
35	#N/A	Screw cap	1
36	#N/A	Screw cap	1
37	#N/A	Screw cap	1
38	201132590920	Horizontal louver	1
39	201102000305	Temp Sensor Fix Clamp Clip	1

Items may be subject to minimum order quantity.
#NA: Contact Factory for availability and lead time.

MZI Series -- Active Model 12,000 Btuh 230v Heat Pump MWHA12D0 High-Wall Air Handler

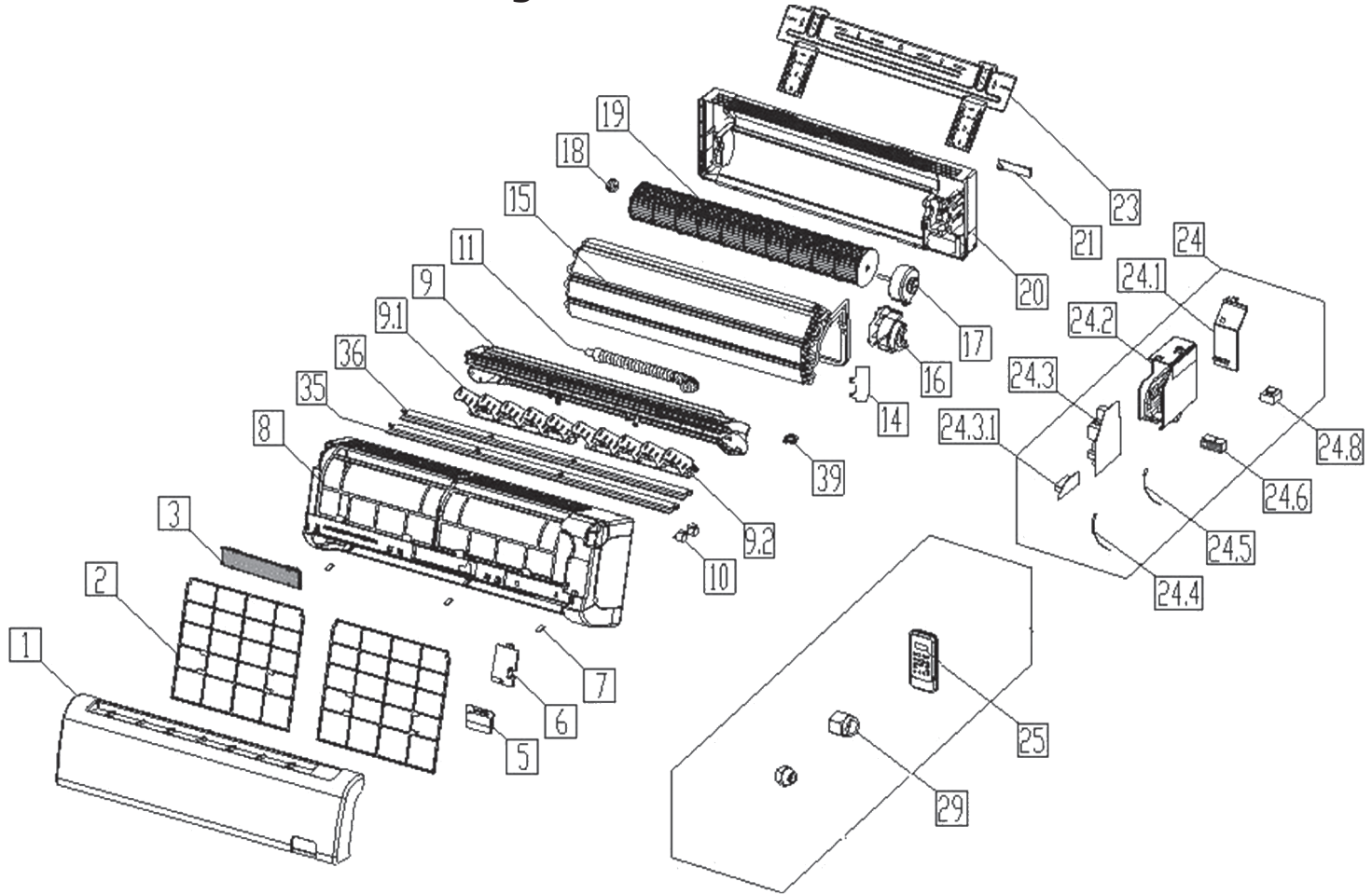


Ref#	Part Number	Description	Qty
1	201132590464	Panel assy	1
2	201132591022	Air filter	2
3	201131410703	Air cleaner	1
5	203332390661	Display box assy	1
6	#N/A	Electronic Control Box Cover	1
8	201132590918	Panel frame assy	1
9	#N/A	Air outlet assy	1
9.1	201132590445	Vertical vane	10
9.2	201130410358	Louver holder	2
10	202400200006	Louver motor	1
11	201101020037	Drain hose	1
14	#N/A	Waterproof board	1
15	201532590397	Evaporator assy	1
16	#N/A	Fan motor cover	1
17	202400300137	Asynchronous motor	1
18	202730100201	Bearing base	1
19	201100200039	Cross flow fan	1
20	#N/A	Chassis assy	1
21	201130100204	Pipe clamp board	1

Ref#	Part Number	Description	Qty
23	201230390006	Installation plate	1
24	#N/A	Electronic control box assy	1
24.1	#N/A	Electronic Control Box Cover	1
24.2	#N/A	Electronic control box	1
24.3	201352090317	Main control board assy	1
24.4	202433190000	Ambient temperature sensor assy	1
24.5	202301300080	Pipe temperature sensor assy	1
24.6	#N/A	Wire joint	1
24.8	202300900095	Transformer	1
25	240010011	Remote Controller	1
29	201600330003	Nut	1
29	201600330001	Nut	1
35	#N/A	Screw cap	1
36	#N/A	Screw cap	1
37	#N/A	Screw cap	1
38	201132590920	Horizontal louver	1
39	201102000305	Temp Sensor Fix Clamp Clip	1
N/S	240010091	Suction/Gas Line, Tube Adapter	1

Items may be subject to minimum order quantity.
#NA: Contact Factory for availability and lead time.

MZI Series - Active Model 18,000 Btuh 230v Heat Pump MWHA18D0 High-Wall Air Handler

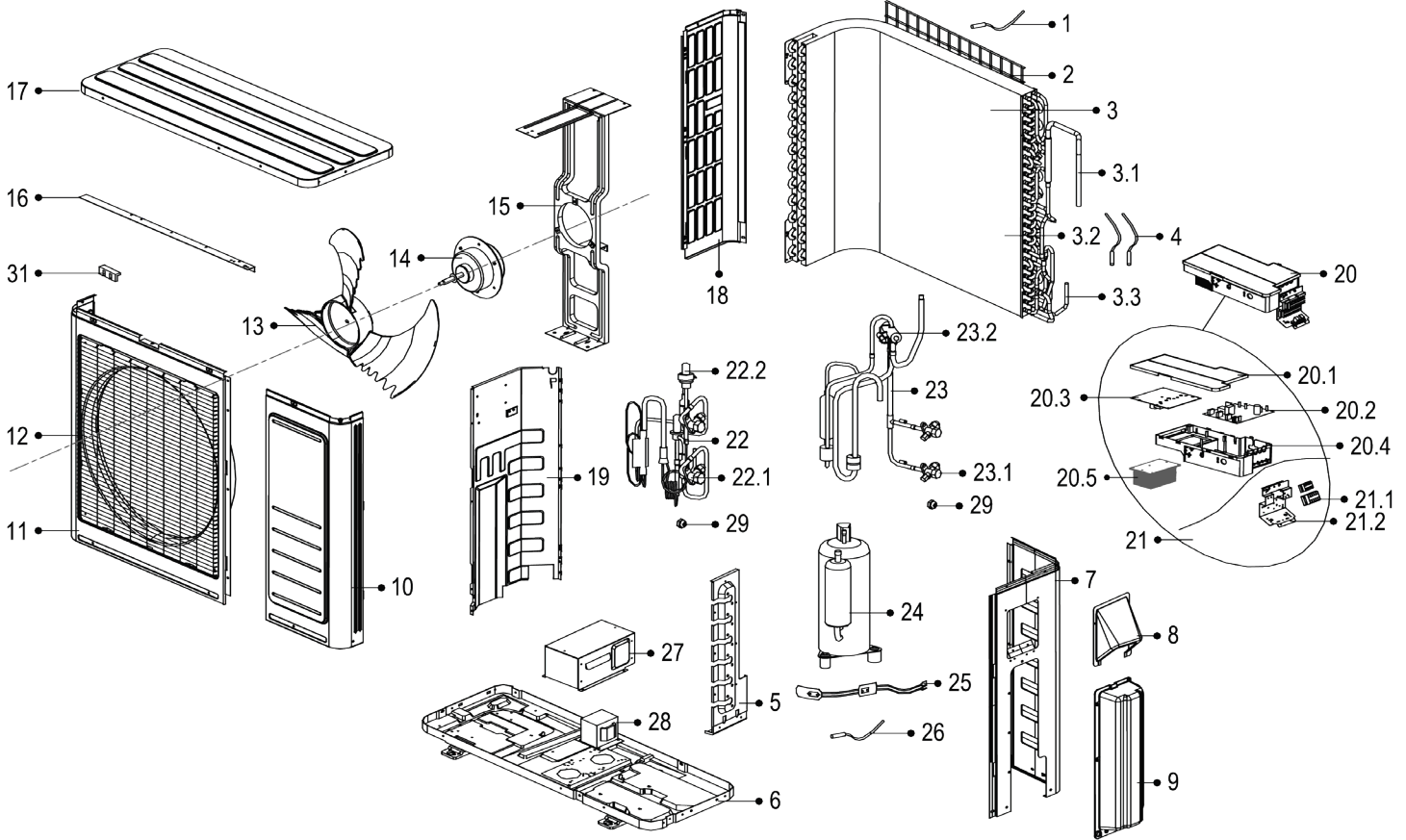


Ref#	Part Number	Description	Qty
1	201132890609	Panel assy	1
2	201132890704	Air filter	2
3	201131410703	Air cleaner	1
5	203332890292	Display box assy	1
6	#N/A	Electronic Control Box Cover	1
7	#N/A	Screw cap	3
8	201132890616	Panel frame assy	1
9	#N/A	Air outlet assy	1
9.1	201130290212	Vertical vane	12
9.2	201130210066	Louver holder	3
10	202400200120	Louver motor	1
11	201101020038	Drain hose	1
14	#N/A	Waterproof board	1
15	201532790059	Evaporator assy	1
16	#N/A	Fan motor cover	1
17	202400300419	Asynchronous motor	1
18	202730100201	Bearing base	1
19	201100200014	Cross flow fan	1

Ref#	Part Number	Description	Qty
20	#N/A	Chassis assy	1
21	201232800103	Pipe clamp board	1
23	201232790012	Installation plate	1
24	#N/A	Electronic control box assy	1
24.1	#N/A	Electronic Control Box Cover	1
24.2	#N/A	Electronic control box	1
24.3	201352090271	Main control board assy	1
24.4	202433190000	Ambient temperature sensor assy	1
24.5	202301300080	Pipe temperature sensor assy	1
24.6	#N/A	Wire joint	1
24.8	202300900573	Transformer	1
25	240010011	Remote Controller	1
29	201600330001	Nut	1
29	201600330003	Nut	1
35	201132890617	Horizontal louver (above)	1
36	201132890618	Horizontal louver (below)	1
39	201102000305	Temp Sensor Fix Clamp Clip	1
N/S	240010091	Suction/Gas Line, Tube Adapter	1

Items may be subject to minimum order quantity.
#NA: Contact Factory for availability and lead time.

MZI Series - Active Model 18,000 Btuh 230v Heat Pump MHB18D00 Two-Zone Condenser

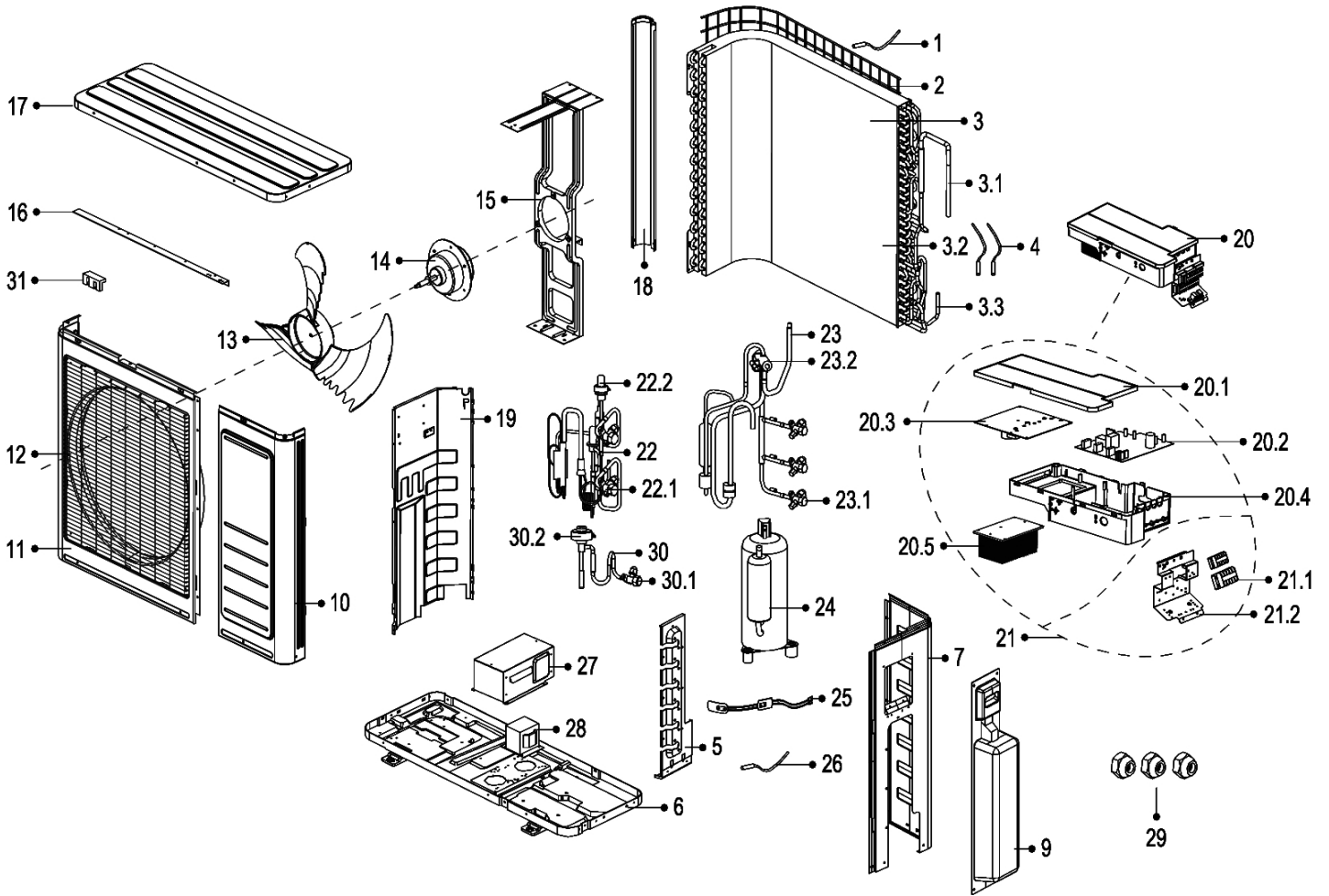


Ref#	Part Number	Description	Qty
1	202301310075	Ambient temperature sensor assembly	1
2	#N/A	Rear net	1
3	201557090037	Condenser assembly	1
3.1	#N/A	Input pipe assembly	1
3.2	#N/A	Condenser	1
3.3	#N/A	Output pipe	1
4	202440500004	Pipe temperature sensor assembly	1
4	202301300423	Pipe temperature sensor assembly	1
5	#N/A	Valve plate	1
6	#N/A	Chassis assembly	1
7	#N/A	Rear right clapboard assembly	1
8	#N/A	Big handle	1
9	#N/A	Water collector	1
10	#N/A	Front right clapboard assembly	1
11	201248100356	Front panel	1
12	#N/A	Air outlet grille	1
13	201100300553	Axial flow fan	1
14	202400300535	Brushless DC Motor	1
15	#N/A	Supporter assembly of fan motor	1
16	#N/A	Rear supporter	1
17	201257190097	Top cover assembly	1
18	201248100364	Left supporter	1

Ref#	Part Number	Description	Qty
19	#N/A	Partition board assembly	1
20	#N/A	Electronic control box assembly	1
20.1	#N/A	Cover of electronic control box	1
20.2	201357090067	Outdoor main control board assembly	1
20.3	201357190108	Inverter control board assembly	1
20.4	#N/A	Installation plate of electric parts	1
20.5	#N/A	Radiator	1
21	#N/A	Terminal board assembly	1
21.1	#N/A	Wire joint	1
21.2	201257190117	Terminal board	1
22	#N/A	Liquid valve assembly	1
22.1	201600740097	Liquid valve	2
22.2	201601300554	Electronic expansion valve assembly	2
23	#N/A	4-ways valve assembly	1
23.1	201600720091	Gas valve	2
23.2	201600690011	4-ways valve	1
24	201400600540	Compressor	1
25	202403100500	Crankcase electric heater	1
26	202448200000	Discharge temperature sensor assembly	1
27	#N/A	Cover of inductance	1
28	202301000943	Reactor	1
29	201600320000	Copper nut	2
31	201135110801	Clamp of front net	8

Items may be subject to minimum order quantity.
#NA: Contact Factory for availability and lead time.

MZI Series - Active Model
27,000 Btuh 230v Heat Pump MHA27D00
Three-Zone Condenser



Items may be subject to minimum order quantity.
#NA: Contact Factory for availability and lead time.

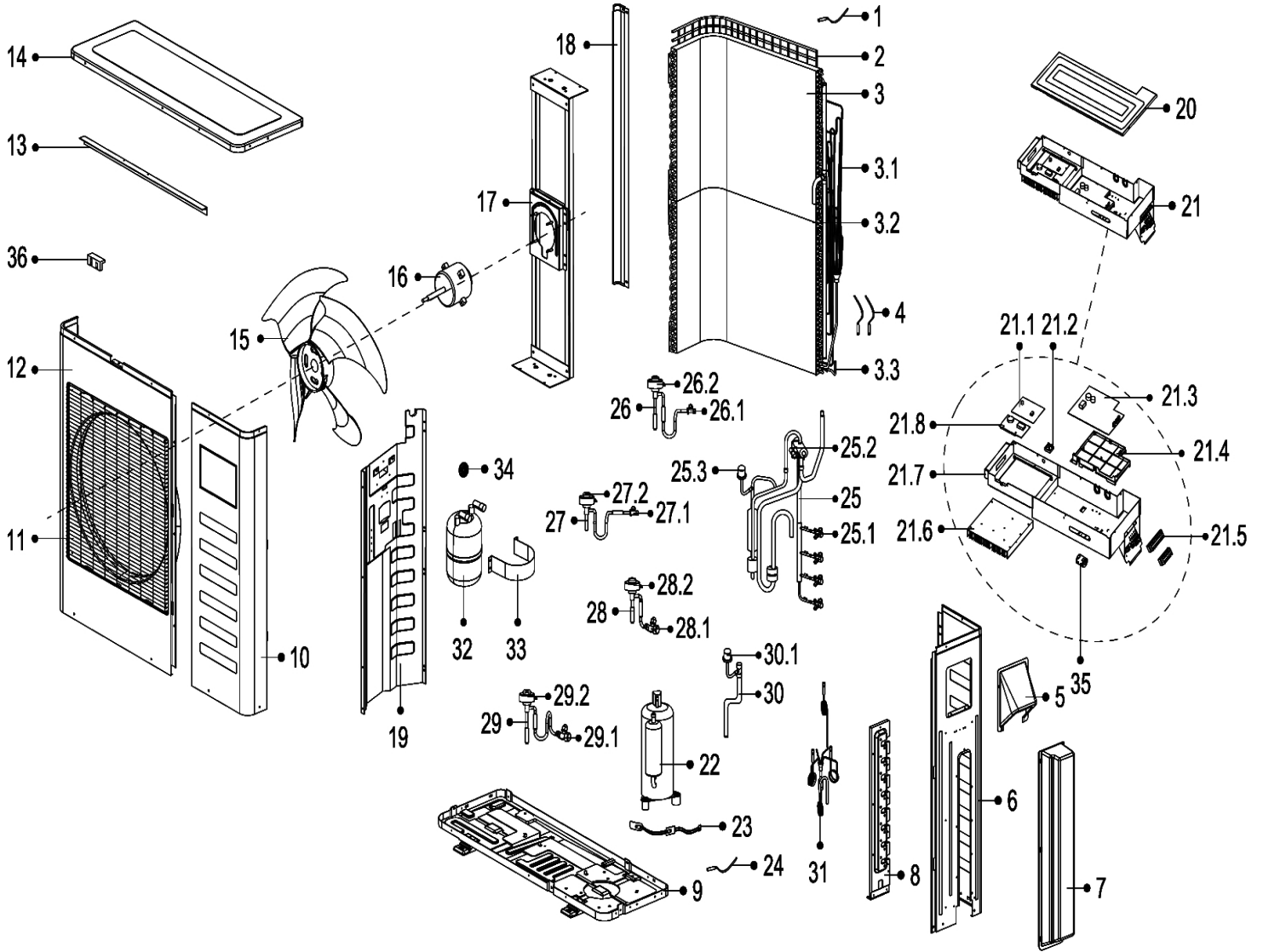
MZI Series - *Active Model* - continued 27,000 Btuh 230v Heat Pump **MHA27D00** Three-Zone Condenser

Ref#	Part Number	Description	Qty
1	202301310075	Ambient temperature sensor assembly	1
2	#N/A	Rear net	1
3	201537891070	Condenser assembly	1
3.1	#N/A	Input pipe assembly	1
3.2	#N/A	Condenser assembly	1
3.3	#N/A	Fluted pipe assembly	1
4	202440500004	Pipe temperature sensor assembly	1
4	202301300422	Pipe temperature sensor assembly	1
5	#N/A	Valve plate	1
6	#N/A	Chassis assembly	1
7	#N/A	Rear right clapboard assembly	1
8	#N/A	Big handle	1
9	#N/A	Water collector	1
10	#N/A	Front right clapboard assembly	1
11	201248100390	Front panel	1
12	201237890112	Air outlet grille	1
13	201100320622	Axial flow fan	1
14	202400401241	Asynchronous motor	1
15	#N/A	Supporter assembly of fan motor	1
16	#N/A	Rear supporter	1
17	201257190097	Top cover assembly	1
18	201248100367	Left supporter	1
19	#N/A	Partition board assembly	1
20	#N/A	Electronic control box assembly	1

Ref#	Part Number	Description	Qty
20.1	#N/A	Cover of electronic control box	1
20.2	201357190087	Main control board assembly	1
20.3	201357190108	Inverter control board assembly	1
20.4	#N/A	Installation board for E-parts	1
20.5	#N/A	Radiator	1
21	#N/A	Terminal board assembly	1
21.1	#N/A	Wire joint	2
21.2	201257190117	Terminal board	1
22	#N/A	Liquid valve assembly	1
22.1	201600740097	Liquid valve	2
22.2	201601300554	Electronic expansion valve assembly	2
23	#N/A	4-way valve assembly	1
23.1	201600720091	Gas valve	3
23.2	201600690011	4-Ways valve	1
24	201400600530	Compressor	1
25	202403100500	Crankcase electric heater	1
26	202448200000	Discharge temperature sensor assembly	1
27	#N/A	Cover of inductance	1
28	202301000943	Reactor, Choke Coil	1
29	201600320000	Copper nut	3
30	#N/A	Liquid valve assembly	1
30.1	201600740097	Liquid valve	1
30.2	201601300554	Electronic expansion valve assembly	1
31	201135110801	Clamp for front net	8

Items may be subject to minimum order quantity.
#NA: Contact Factory for availability and lead time.

MZI Series - Active Model
36,000 Btuh 230v Heat Pump MHA36D00
Four-Zone Condenser



Items may be subject to minimum order quantity.
 #NA: Contact Factory for availability and lead time.

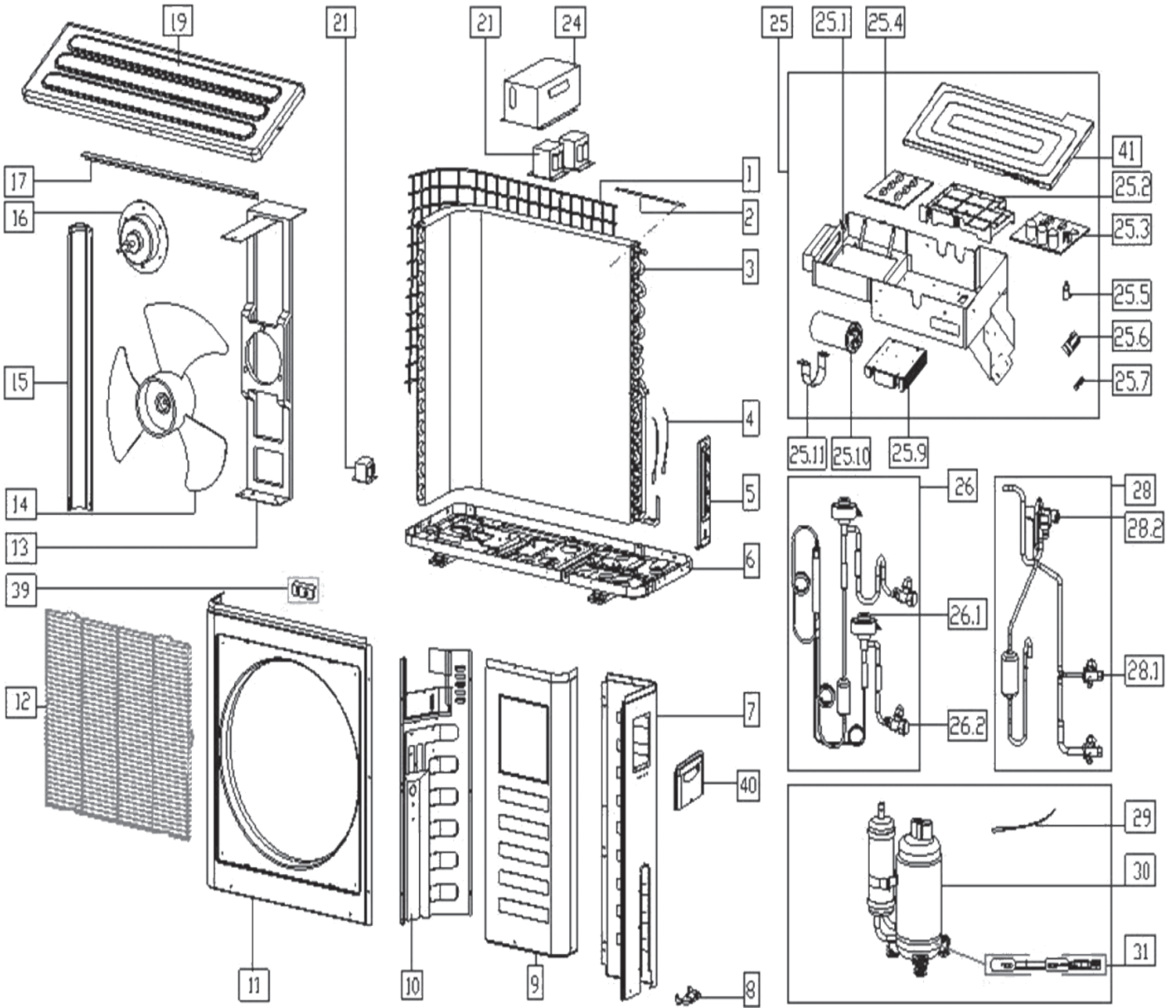
MZI Series - *Active Model* - continued 36,000 Btuh 230v Heat Pump MHA36D00 Four-Zone Condenser

Ref#	Part Number	Description	Qty
1	202301310075	Ambient temperature sensor assembly	1
2	#N/A	Rear net	1
3	201557190043	Condenser assembly	1
3.1	#N/A	Input pipe assembly	1
3.2	#N/A	Condenser assembly	1
3.2	#N/A	Condenser assembly	1
3.3	#N/A	Fluted pipe assembly	1
4	202301300111	Pipe temperature sensor assembly	1
4	202301300421	Pipe temperature sensor assembly	1
5	#N/A	Big handle	1
6	#N/A	Rear right clapboard assembly	1
7	#N/A	Water collector	1
8	#N/A	Valve plate	1
9	#N/A	Chassis assembly	1
10	#N/A	Front right clapboard assembly	1
11	201248700055	Air outlet grille	1
12	201248700072	Front panel	1
13	#N/A	Rear supporter	1
14	201257190096	Top cover assembly	1
15	201100320624	Axial flow fan	1
16	202400300051	Asynchronous motor	1
17	#N/A	Supporter assembly of fan motor	1
18	201248700262	Left supporter	1
19	#N/A	Partition board assembly	1
20	#N/A	Cover of electronic control box	1
21	#N/A	Electronic control box assembly	1
21.1	201357190031	Variable-frequency Module Subassembly	1
21.2	#N/A	Insulation plate	1
21.3	201357190091	Main control board assembly	1
21.4	#N/A	Installation plate of electric parts	1
21.5	#N/A	Wire joint	1

Ref#	Part Number	Description	Qty
21.5	#N/A	Wire joint	1
21.6	#N/A	Radiator	1
21.7	#N/A	Installation plate of electric parts	1
21.8	201319901145	Active PFC Module Subassembly	1
22	201401500220	Compressor	1
23	202403101715	Crankshaft Electrical Heating Strip	1
24	202448200000	Discharge temperature sensor assembly	1
25	#N/A	4-Ways valve assembly	1
25.1	201600720091	Gas valve	4
25.2	201600600124	4-Ways valve	1
25.3	202301820042	Pressure Controller(RoHS)	1
26	#N/A	liquid valve assembly	1
26.1	201600740091	Liquid valve	1
26.2	201601300554	liquid valve assembly(35X2)	1
27	#N/A	liquid valve assembly	1
27.1	201600740091	Liquid valve	1
27.2	201601300554	liquid valve assembly(35X2)	1
28	#N/A	liquid valve assembly	1
28.1	201600740091	Liquid valve	1
28.2	201601300554	liquid valve assembly(35X2)	1
29	#N/A	liquid valve assembly	1
29.1	201600740091	Liquid valve	1
29.2	201601300554	liquid valve assembly(35X2)	1
30	201657190421	Suction pipe assembly	1
30.1	202301820021	Pressure Controller(RoHS)	1
31	201657290009	Capillary assembly	1
32	201601000074	Accumulator cylinder	1
33	#N/A	Fix clamp of segregator	1
34	202301000523	PFC Inductor	1
35	202301000020	Magnetic Loop	2
36	201135110801	Clamp of front net	10

Items may be subject to minimum order quantity.
#NA: Contact Factory for availability and lead time.

MZI Series - Inactive Model
18,000 Btuh 230v Heat Pump MHA18D00
Two-Zone Condenser



Items may be subject to minimum order quantity.
 #NA: Contact Factory for availability and lead time.

MZI Series - *Inactive Model* - continued **18,000 Btuh 230v Heat Pump MHA18D00 Two-Zone Condenser**

Ref#	Part Number	Description	Qty
1	#N/A	Rear net	1
2	202301310075	Ambient temperature sensor assy	1
3	201557090037	Condenser assy	1
4	202440500004	Pipe temperature sensor assy	1
4	202301300423	Pipe temperature sensor assy	1
5	#N/A	Valve plate	1
6	#N/A	Chassis assy	1
7	#N/A	Rear right clapboard assy	1
8	#N/A	Water collector	1
9	201248100389	Front right clapboard assy	1
10	#N/A	Partition board assy	1
11	201248100359	Front panel	1
12	201237890112	Air outlet grille	1
13	#N/A	Fan Motor Support Assy	1
14	201145500002	Axial flow fan	1
15	201248100367	Left Support	1
16	202400400955	Asynchronous motor	1
17	#N/A	Rear net frame	1
19	#N/A	Top cover assy	1
21	202301000818	Reactor, Choke Coil	1
21	202301000832	Reactor, Choke Coil	1
21	202301040055	Reactor, Choke Coil	1
24	#N/A	Inductor Cover	1

Ref#	Part Number	Description	Qty
25	#N/A	Electronic control box assy	1
25.1	#N/A	Electronic control box	1
25.2	201157390005	Installation plate of PCB	1
25.3	201357090035	Main control board assy	1
25.4	201357190062	Inverter control board assy	1
25.5	202401100353	Fan motor capacitor	1
25.6	#N/A	Wire joint	1
25.7	#N/A	Insulation plate	1
25.9	#N/A	Heat Sink	1
25.10	202401000508	Compressor Capacitor	1
25.11	#N/A	Capacitor clip	1
26	#N/A	Liquid valve assy	1
26.1	201601300554	Electronic expansion valve assy	1
26.2	201600740097	Liquid valve	1
28	#N/A	4-way valve assy	1
28.1	201600720091	Gas valve	1
28.2	201600690011	4-Way valve	1
29	202448200000	Discharge temperature sensor assy	1
30	201400600540	Compressor	1
31	202403100500	Crankcase electric heater	1
39	201135110801	Clamp of front net	1
40	#N/A	Big Handle	1
41	#N/A	Electronic Control Box Cover	1

Items may be subject to minimum order quantity.
 #NA: Contact Factory for availability and lead time.



ECR International, Inc.
2201 Dwyer Avenue • Utica, New York 13501
Phone: 800.325.5279 • Web: enviromaster.com