

# Industrial Vacuum

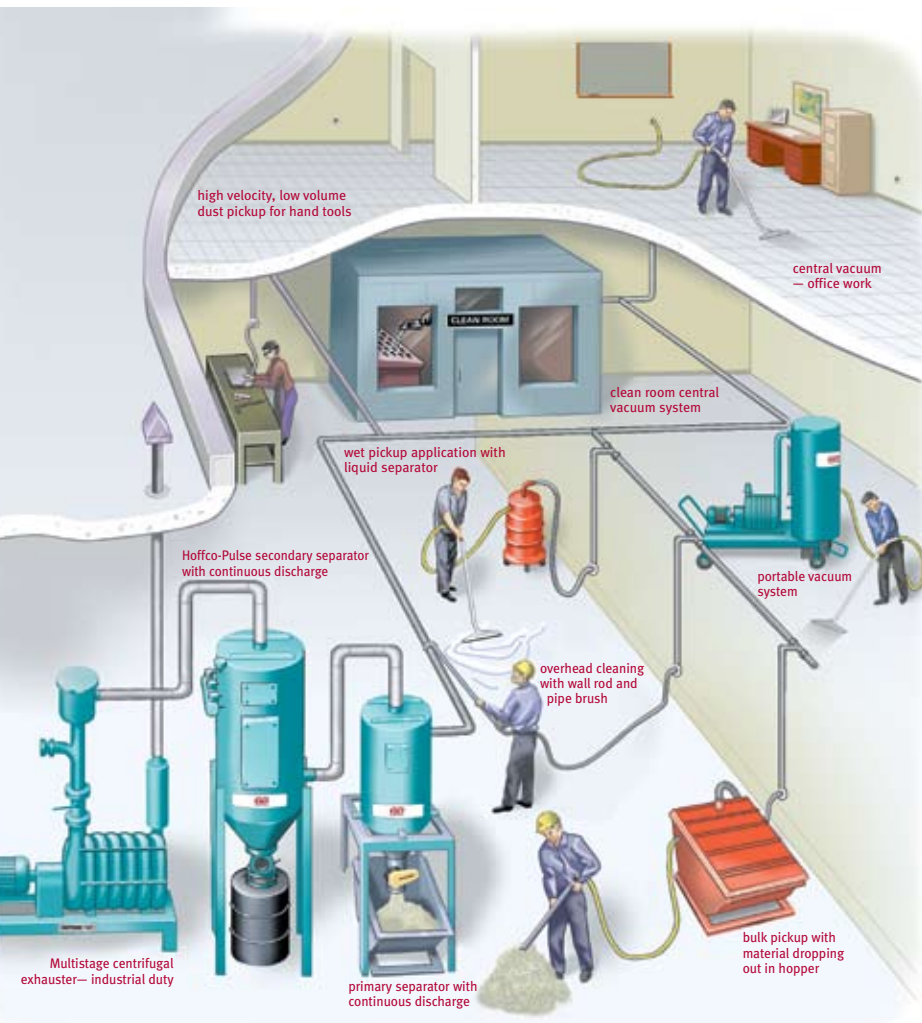
Hose, Tools and Accessories



Experience Proven Results™

# Gardner Denver

## Engineered Vacuum Systems



For more than 100 years, three names have been synonymous with engineered vacuum system solutions for industrial applications: Lamson®, Hoffman® and Invincible®. Today these legacies are joined under the Gardner Denver name, creating a superior line of engineered vacuum products.

In making buying decisions, today more than ever, it is critical to be concerned with factors other than price. Other variables such as efficiency, convenience, future requirements, healthy work environment and compliance with domestic and international regulations must also be considered. Our broad line of products and engineering expertise make it possible to design a complete vacuum system with optimum performance and capability at the lowest operational expense possible.

Hose, tools and accessories are a small part of the Gardner Denver products offered to the vacuum marketplace. This vast product offering ranges from the rugged industrial portables and the MultiFlow™ and T-Vac™ pre-engineered stationary systems to the custom designed, engineered vacuum system that services an entire facility using a fabricated or cast multistage centrifugal vacuum producer. Controls are available to protect your vacuum system or to seamlessly integrate the system into a distributed control system. A complete line of Smooth Flow tubing and fittings simplify installation and reduce piping loss. A variety of valves, collectors and filters are available to increase the efficiency of your system.

### Vacuum Producers



Cast Series



T-Series Fabricated



TST Series Standard  
Overhung Fabricated



Gardner Denver  
TurboTron® Exhausters



MultiFlow™

# Industrial Vacuum

## Hose, Tools & Accessories



### Commercial Duty Hoses

Crushproof Plastic.....	4
Flexible Plastic.....	4
Heavy-Duty Corrugated PVC.....	4
Vinylife.....	4
Heavy-Duty Rubber	
Smooth.....	5
Corrugated Exterior.....	5
F-Style, PVC.....	5
HC Style, Clear PVC.....	5
VF Style, Vinyl Foam.....	5
RS Style, Rubber.....	5

### Commercial Duty Rods and Tools

Commercial Duty Floor Rods.....	6
Commercial Duty Floor Tools.....	6
Commercial Duty Hand Tools.....	7
Commercial Duty Utility Tools.....	7

### Industrial Heavy-Duty Rods and Tools

Industrial Heavy-Duty Floor Rods.....	8
Industrial Heavy-Duty Floor Tools.....	8
Industrial Heavy-Duty Hand Tools.....	9
Industrial Heavy-Duty Bulk Pickup Tools.....	9
Industrial Heavy-Duty Adjustable Bleeder Tools.....	9

### Hose Accessories

Hose Accessories.....	10
Inlet Valves.....	10

### Hose and Tools Kits/Storage

Commercial Duty Hose and Tool Kits.....	11
Industrial Duty Hose and Tool Kits.....	11
Storage and Hose Rack.....	11

### Accessories



HEPA Filter



Smooth Flow™  
Tubings and Fittings



Hoffco-Pulse

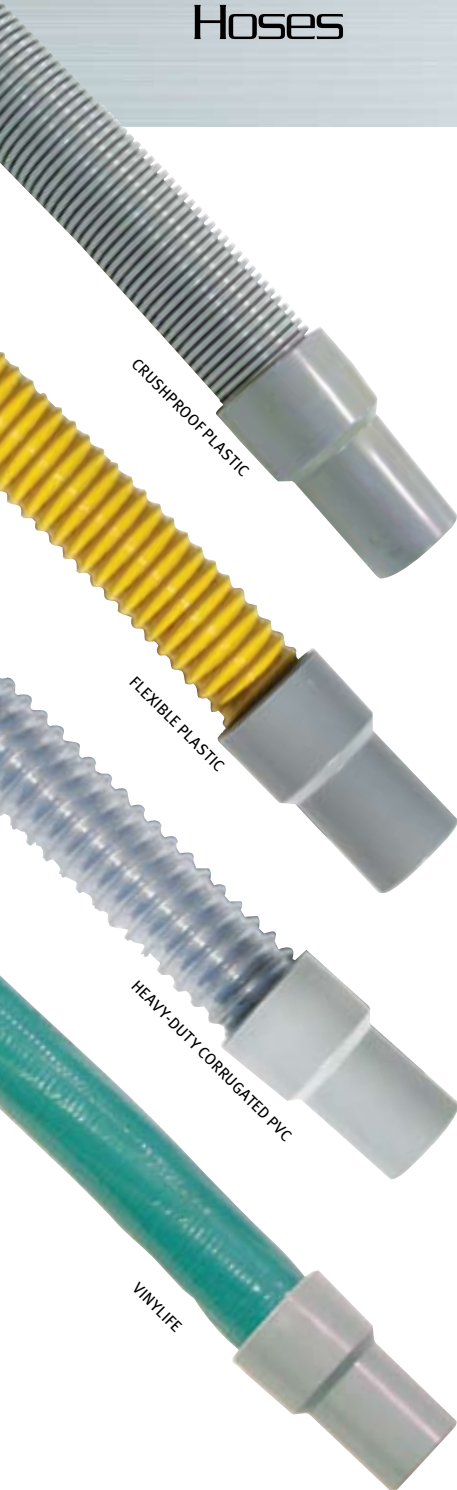


TurboClean™ Cartridge Style  
Pulse-Jet Filtration Unit



Self-Contained  
Vacuum Systems

# Commercial Duty Hoses



## Crushproof Plastic

Lightweight, flexible, crush-resistant hose. Ideal for housekeeping applications and conveying light, non-abrasive materials. Constructed of ethylene vinyl acetone copolymer, this hose is non-conductive and not recommended for applications where static build-up is a concern. Not available in a grounded version.

Dia.	Wt/Ft in Lbs.	Bend Radius	Temp. Range degree °F	10'	15'	25'	50'
1.5"	0.23	3"	-20° to 100°	AFW7115100	AFW7115150	AFW7115250	AFW7115500
2.0"	0.34	4"		AFW7120100	AFW7120150	AFW7120250	AFW7120500
2.5"	0.47	6"	0° to 140°	AFW7125100	AFW7125150	AFW7125250	AFW7125500
3.0"	0.70	12"		AFW7130100	AFW7130150	AFW7130250	AFW7130500

## Flexible Plastic

Lightweight, very flexible, wire reinforced hose. Designed for use in housekeeping or applications requiring repeated flexing. Utilizes high strength reinforcing yarns and a coated spring steel wire helix between layers of ethylene vinyl acetate or polyvinyl chloride (larger sizes).

Dia.	Wt/Ft in Lbs.	Bend Radius	Temp. Range degree °F	10'	15'	25'	50'
1.5"	0.20	1"	-20° to 120°	AFW7515101	AFW7515151	AFW7515251	AFW7515501
2.0"	0.25	1"		AFW7520101	AFW7520151	AFW7520251	AFW7520501
2.5"	0.30	1"		AFW7525100	AFW7525150	AFW7525250	AFW7525500
3.0"	0.45	2"		AFW7530100	AFW7530150	AFW7530250	AFW7530500

## Heavy-Duty Corrugated PVC

Food grade, clear material handling hose. Intended for use in pneumatic conveying systems handling dry powders, pellets or granulars. Designed with a convoluted cover for increased flexibility and a smooth bore to eliminate material build up, reduce wear and minimize pressure loss.

Dia.	Wt/Ft in Lbs.	Bend Radius	Temp. Range degree °F	10'	15'	25'	50'
1.5"	0.49	3"	14° to 104°	AFW7015101	AFW7015151	AFW7015251	AFW7015501
2.0"	0.58	4"		AFW7020101	AFW7020151	AFW7020251	AFW7020501
2.5"	0.88	5"		AFW7025100	AFW7025150	AFW7025250	AFW7025500
3.0"	1.25	6"		AFW7030100	AFW7030150	AFW7030250	AFW7030500
4.0"	1.92	10"		AFW7040100	AFW7040150	AFW7040250	AFW7040500
5.0"	2.53	16"		AFW7050100	AFW7050150	AFW7050250	AFW7050500
6.0"	3.75	18"		AFW7060100	AFW7060150	AFW7060250	AFW7060500
8.0"	5.25	36"		AFW7080100	AFW7080150	AFW7080250	AFW7080500

## Vinylife

Medium weight, flexible and versatile wire reinforced hose. Corrosion, oil and abrasion resistant with smooth inner bore. Constructed of vinyl, cellular foam wall, reinforced with multiple spirals of wire, woven with nylon cord.

Dia.	Wt/Ft in Lbs.	Bend Radius	Temp. Range degree °F	10'	15'	25'	50'
1.5"	0.46	3"	-20° to 210°	AFW7715101	AFW7715151	AFW7715251	AFW7715501
2.0"	0.62	5"		AFW7720101	AFW7720151	AFW7720251	AFW7720501
2.5"	0.80	6"		AFW7725100	AFW7725150	AFW7725250	AFW7725500
3.0"	1.00	7"		AFW7730100	AFW7730150	AFW7730250	AFW7730500

Note regarding all Gardner Denver Hoses with Part Numbers starting with "AFW"

Part numbers that end in "1" are grounded, having a braided SST wire protruding from the cuff of the hose. The wire provides a grounded path from an inserted hand tool or floor rod connection to the inlet valve. Part numbers that end in "0" are not grounded. All hoses come with removable hose adapters/nipples that provide a convenient connection for use with the "HF" style accessories. However, the hose adapters/nipples can be removed for connection to the "AFW" style commercial-duty and industrial-duty hand tools and floor rods.

Note regarding all Gardner Denver Hoses with Part Numbers starting with "HF"

All hoses are grounded, with permanently attached (riveted) steel nipples at both ends. These hoses cannot be used with AFW style accessories.

"HF" Style Nipple

"AFW" Style Cuff



# Commercial Duty Hoses

## Heavy-Duty Rubber

Thick wall, wire reinforced rubber hose. Ideal for pneumatic conveying systems handling abrasive material. Special EPDM compound and smooth bore resist abrasion and result in longer life. Heavy spring steel wire helix and fabric reinforcement provide crush resistance and durability. The corrugated version provides greater flexibility.

### Smooth

Dia.	Wt/Ft in Lbs.	Bend Radius	Temp. Range degree °F	10'	15'	25'	50'
1.5"	0.71	3"	0° to 212°	AFW7315101	AFW7315151	AFW7315251	AFW7315501
2.0"	0.88	4"		AFW7320101	AFW7320151	AFW7320251	AFW7320501
2.5"	1.12	5"		AFW7325100	AFW7325150	AFW7325250	AFW7325500
3.0"	1.32	6"		AFW7330100	AFW7330150	AFW7330250	AFW7330500

### Corrugated Exterior

Dia.	Wt/Ft in Lbs.	Bend Radius	Temp. Range degree °F	10'	15'	25'	50'
1.5"	0.42	3"	0° to 212°	AFW7615101	AFW7615151	AFW7615251	AFW7615501
2.0"	0.53	3"		AFW7620101	AFW7620151	AFW7620251	AFW7620501
2.5"	0.66	4"		AFW7625100	AFW7625150	AFW7625250	AFW7625500
3.0"	0.77	4"		AFW7630100	AFW7630150	AFW7630250	AFW7630500
4.0"	1.39	7"	-40° to 158°	AFW7640100	AFW7640150	AFW7640250	AFW7640500
5.0"	2.47	10"		AFW7650100	AFW7650150	AFW7650250	AFW7650500
6.0"	3.08	18"		AFW7660100	AFW7660150	AFW7660250	AFW7660500
8.0"	5.65	36"		AFW7680100	AFW7680150	AFW7680250	AFW7680500

## F-Style, PVC

(For product description, see Flexible Plastic hose)

Dia.	Wt/Ft in Lbs.	Bend Radius	Temp. Range degree °F	10'	15'	25'	50'
1.5"	0.20	1"	-20° to 120°	HF10392560	HF10392561	HF10392562	HF10392563
2.0"	0.25	1"		HF10390426	HF10390427	HF10390428	HF10390429

## HC Style, Clear PVC

(For product description, see Heavy-Duty Corrugated PVC hose)

Dia.	Wt/Ft in Lbs.	Bend Radius	Temp. Range degree °F	10'	15'	25'	50'
1.5"	0.49	3"	14° to 104°	HF10392609	HF10392610	HF10392611	HF10392612
2.0"	0.58	4"		HF10390461	HF10390462	HF10390463	HF10390464

## VF Style, Vinyl Foam

(For product description, see Vinylife hose)

Dia.	Wt/Ft in Lbs.	Bend Radius	Temp. Range degree °F	10'	15'	25'	50'
1.5"	0.46	3"	-20° to 210°	HF10392403	HF10390395	HF10390394	HF10392414
2.0"	0.62	5"		HF10390406	HF10390407	HF10390408	HF10390412

## RS Style, Rubber

(For product description, see Heavy-Duty Rubber hose)

Dia.	Wt/Ft in Lbs.	Bend Radius	Temp. Range degree °F	10'	15'	25'	50'
1.5"	0.71	3"	0° to 212°	HF10392582	HF10392573	HF10392574	HF10392576
2.0"	0.88	4"		HF10390443	HF10390434	HF10390435	HF10390437



# Commercial Duty Rods and Tools



## Commercial Duty Floor Rods

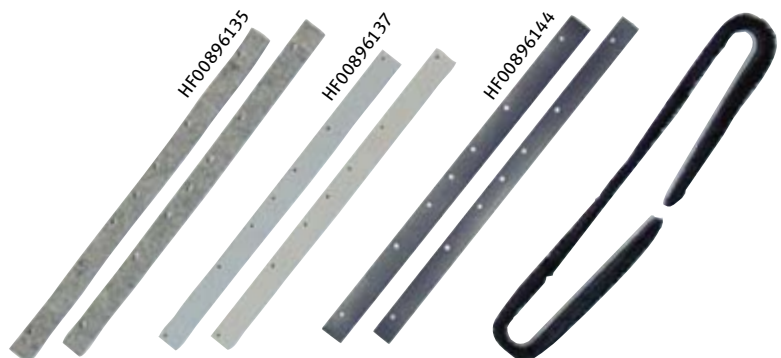
For use with commercial duty tools, these rods offer durability, versatility and lighter weight for the user.

Description	1 1/2"
54" double curved aluminum floor rod w/ hose swivel	HF10392605
54" double curved steel floor rod w/ hose swivel	HF10392606
54" double curved aluminum floor rod w/ friction fit	HF00896110
54" straight aluminum rod for overhead cleaning	HF00896111
Replacement aluminum nut	HF00896113
Replacement ring	HF00896114
Replacement aluminum hose swivel	HF10390325
54" straight aluminum extension rod for HF00896111	HF00896112

## Commercial Duty Floor Tools

For general clean-up and lighter duty floor vacuuming on carpeted or hard surface flooring. Commercial duty floor tools are only compatible with commercial duty floor rods.

Description	1 1/2"
14" cast aluminum carpet tool	HF00896131
12" cast aluminum gulper tool	HF00896132
18" cast aluminum gulper tool	HF00896133
14" cast aluminum floor tool with felt blades	HF00896134
Felt blades, replacement set for HF00896134 (above)	HF00896135
14" cast aluminum floor tool with fiber inserts	HF00896136
Fiber inserts, replacement set for HF00896136 (above)	HF00896137
14" cast aluminum floor tool with nylon bristles	HF00896138
Nylon bristles, replacement set for HF00896138 (above)	HF00896139
14" cast aluminum floor tool with squeegee inserts	HF00896143
Squeegee blades, replacement set for HF00896143 (above)	HF00896144



# Commercial Duty Rods and Tools

## Commercial Duty Hand Tools

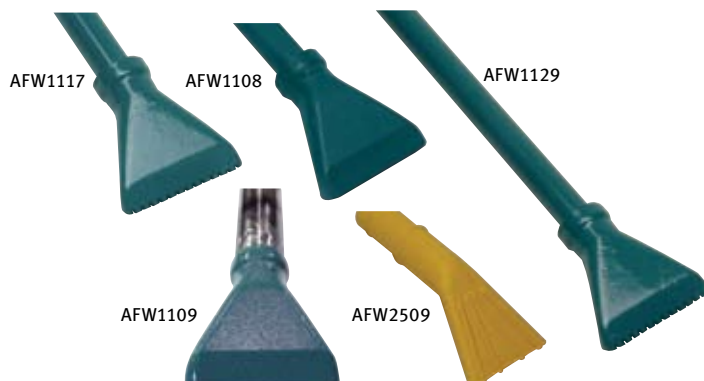
These tools are generally used attached directly to the hose or with overhead or extension rods and are for close-up cleaning jobs such as upholstery, crevices or corners, stairs or overhead pipes. Most commercial duty hand tools can be used with industrial duty overhead rods, with the use of the hand tool adapter.

Tapered hand tool adapter (when using tools with "HF" style hose)  
HF00896145



## Commercial Duty Utility Tools

These tools are designed for vacuuming materials around machinery, bins, work tables or flooring. Recommended for car wash applications. Use with 1½" hose unless otherwise noted.



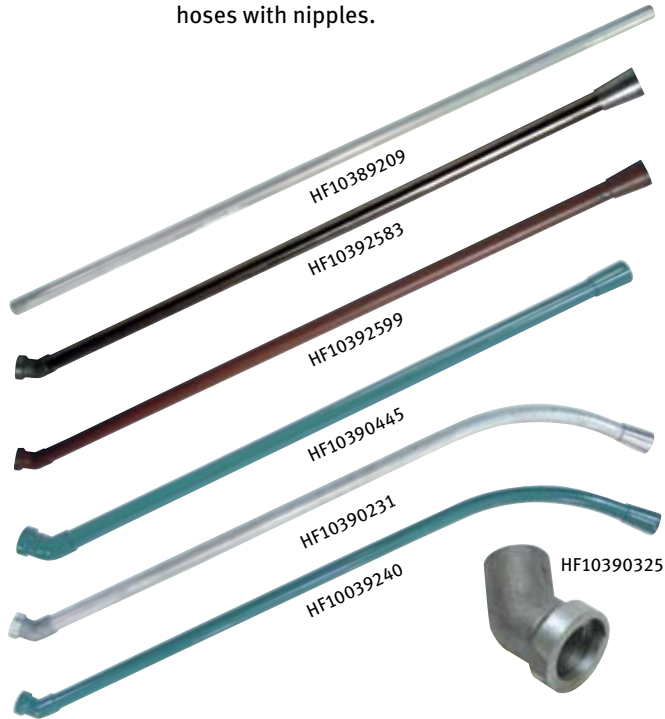
Description	1½"
Tapered hand tool adapter	HF00896145
5" aluminum upholstery tool (without bristles)	HF00896115
Bristle assembly for HF00896115 (above)	HF00896116
6" aluminum utility tool (without bristles)	HF00896117
6" aluminum utility tool with horsehair bristle assembly	HF20014524
Horsehair bristles only for HF20014524 (above)	HF00896119
3" aluminum dust brush with horsehair bristles	HF00896122
Horsehair bristles only for HF00896122 (above)	HF00896123
3" aluminum dust brush with nylon bristles	HF20014520
Nylon bristles only for HF20014520 (above)	HF20014521
5" aluminum dust brush with horsehair bristles	HF00896124
Horsehair bristles only for HF00896124 (above)	HF00896126
5" aluminum dust brush with nylon bristles	HF20014522
Nylon bristles only for HF20014522 (above)	HF20014523
24" anodized aluminum crevice tool	HF00896128
15" plated steel crevice tool	HF00896129
18" anodized aluminum pick-up nozzle	HF00896130
9" aluminum wall or stair brush	HF00896102
Horsehair bristles only for HF00896102 (above)	HF00896103
Aluminum overhead pipe brush for 6" diameter pipes	HF00896104
Bristles only for HF00896104 (above)	HF00896105
Aluminum overhead pipe brush for 4"-6" diameter pipes	HF00896106
Bristles only for HF00896106 (above)	HF00896107
Aluminum overhead pipe brush for 1"-3" diameter pipes	HF00896108
Bristles only for HF00896108 (above)	HF00896109
6" aluminum swivel hand tool	AFW1112
Brush only w/ clamp for AFW1112	AFW1107
Brush only for AFW1112	AFW1106

Description	1½"
Slotted aluminum tool with 6" non-swivel wand	AFW1115
Slotted aluminum tool with 18" non-swivel wand	AFW1127
Slotted aluminum tool with 6" swivel wand	AFW1117
Slotted aluminum tool with 18" swivel wand	AFW1129
Slotted aluminum tool only	AFW1133
Replacement 6" wand w/ swivel ring	AFW1118
Replacement 18" wand w/ swivel ring	AFW1130
1½" x 4½" non-metallic hand tool	AFW2508
2" x 4½" non-metallic hand tool	AFW2509
1½" w 6" cast iron non-slotted hand tool	AFW1108
2" x 6" cast iron non-slotted hand tool	AFW1109

# Industrial Heavy-Duty Rods and Tools

## Industrial Heavy-Duty Floor Rods

For use with industrial duty tools, these rods offer durability in the most severe industrial conditions. These rods must connect to hoses with nipples.



Description	1½"	2"
60" steel floor rod with 45° female tool swivel	HF10392583	HF10390445
60" aluminum floor rod w/ female tool swivel	HF10392599	N/A
Replacement 45° aluminum tool swivel	HF10038305	HF10038426
Replacement aluminum hose swivel	HF10038305	HF10390450
60" curved steel floor rod with 45° female tool swivel	HF10039240	HF10039447
60" curved aluminum floor rod with 45° female tool swivel	HF10390231	N/A
60" straight steel overhead rod with hose swivel	HF10392584	N/A
60" straight aluminum overhead rod with hose swivel	HF10392600	N/A
18" straight steel extension rod for overhead rods	HF10038228	N/A
72" straight steel extension rod for overhead rods	HF10039234	N/A
72" straight aluminum extension rod for overhead rods	HF10389209	N/A

N/A = not available

Description	1½"	2"
8" aluminum gulper floor nozzle	N/A	HF10038410
15" steel back floor tool w/ fiber inserts	HF10390234	HF10039555
15" steel back floor tool w/ nylon inserts	HF10390279	HF10039546
15" steel back floor tool w/ hair inserts	HF10390280	HF10039547
15" steel back floor tool w/ rubber inserts	N/A	HF10039558
Replacement fiber strip (for HF10390234 and HF10039555)	HF00890295	HF00890295
Replacement hair bristles (for HF10390280 and HF10039547)	HF00895951	HF00895951
Replacement nylon bristles (for HF10390279 and HF10039546)	HF00895953	HF00895953
Replacement rubber strips (for HF10039558)	N/A	HF10038408
12" aluminum bare floor tool	HF10390206	N/A

N/A = not available

## Industrial Heavy-Duty Floor Tools

Designed to offer years of service in the toughest industrial applications. Industrial floor tools are only compatible with industrial floor rods.





# Industrial Heavy-Duty Rods and Tools

## Industrial Heavy-Duty Hand Tools

These tools are generally used attached directly to the hose or with overhead or extension rods and are for close-up industrial applications, such as vacuuming metal chips or broken glass around machinery. These hand tools connect to hoses with nipples.



## Industrial Heavy-Duty Bulk Pickup Tools

Designed for pickup of larger volume dry materials. Available in stainless steel by special order. Bulk pickup tools require "AFW" style hoses.



Description	1½"	2"
Aluminum hand nozzle with 3" x ½" slot	HF10039334	N/A
8" round aluminum brush with hair bristles in plastic block	HF10392585	N/A
8" round brush with hair bristles in plastic block	HF00890276	HF00890276
8" round aluminum brush with nylon bristles in plastic block	HF10392587	HF10039519
8" round brush with nylon bristles in plastic block	HF00890290	HF00890290
8" aluminum back brush, hair bristles	HF10039241	N/A
Hair brush only, replacement for HF10039241	HF00890258	N/A
6½" aluminum back brush, hair bristles	HF10039370	N/A
Hair brush only, replacement for HF10039370	HF10038360	N/A
20" flexible rubber nozzle	HF00890403	HF00895221
4" aluminum gulper tool	N/A	HF10038444
6" aluminum hand nozzle	N/A	HF10039414
Aluminum hand nozzle with 6" x ½" slot	HF10389382	N/A
5" aluminum round brush, hair bristles	HF10039246	N/A
Hair brush in plastic block, replacement for HF10039246	HF00890256	N/A

N/A = not available

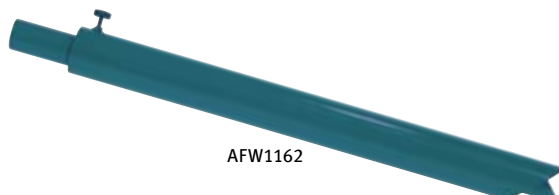


Description	1½"
1½" x 23" plastic gulper tool	AFW1331
1½" x 40" steel gulper tool	AFW1174
2" x 40" steel gulper tool	AFW2593
2½" x 40" steel gulper tool with handle	AFW1397
3" x 40" steel gulper tool with handle	AFW1154
4" x 40" steel gulper tool with handle	AFW1155

Description	1½"
1½" x 36" adjustable bleeder tool	AFW1161
2" x 36" adjustable bleeder tool	AFW1162
2½" x 36" adjustable bleeder tool	AFW1163
3" x 36" adjustable bleeder tool	AFW1164
3½" x 36" adjustable bleeder tool	AFW1152
4" x 36" adjustable bleeder tool	AFW1153

## Industrial Heavy-Duty Adjustable Bleeder Tools

Engineered to efficiently pick up dense materials, such as sand, where airflow is restricted. Available in stainless steel by special order. Bleeder tools require "AFW" style hoses.



# Hose Accessories

## Hose Accessories

Various hose adapters and connectors to provide flexibility in your system. A nipple is required for connection to hose.



HF10389381

HF10389380

HF10390241

## Inlet Valves

All 1/2" inlet valves have 1/2" female slip joint connections for 1/2" hoses and 2" male NPT for installation. Latching type inlet valves require special hose connections.



HF20011860

HF20011821

HF20013339

Description	1 1/2"	2"
Aluminum thumb valve	HF10390241	HF10039528
Cast aluminum hose connector for joining 1 1/2" to 1" hoses	HF10038018	N/A
Steel hose connector for joining two 1 1/2" hoses	HF10389378	N/A
Steel hose connector for joining 1 1/2" to 2" hoses	HF10389379	HF10389379
Cast aluminum hose connector for joining two 1 1/2" hoses	HF10389391	N/A
Cast aluminum hose connector for joining two 2" hoses	N/A	HF10038411
Steel adapter for joining 1 1/2" hose to 2" valve	HF10389380	N/A
Steel adapter for joining 1" hose to 1 1/2" valve	HF10389381	N/A
45° steel elbow, 1 1/2", to adapt hand tools for overhead use	HF10038391	N/A
45° stainless steel elbow, 1 1/2", to adapt hand tools for overhead use	HF10389238	N/A

N/A = not available

Description	1 1/2"	2"
Zinc body standard inlet valve with zinc plated cover	HF10392604	HF20003220
Zinc body latching inlet valve with zinc plated cover	HF20002221	HF44003220
Cast iron inlet valve with aluminum cover	HF10039328	HF10039463
Replacement valve cap for HF10039463	N/A	HF10038401
Replacement spring for HF10039463	N/A	HF00610122
Nickel plated standard inlet valve with stainless steel cover	HF20011860	HF10390465
Nickel plated latching inlet valve with stainless steel cover	HF20005248	HF44390465
Stainless steel standard inlet valve and cover	HF20011821	HF20012105
Stainless steel latching inlet valve and cover	HF20013339	HF44012105
Flat wall plate, nickel plated brass	HF10389303	N/A
Recessed wall plate, nickel plated steel	HF20016065	N/A
Recessed wall plate, stainless steel	HF20014517	N/A
1 1/2" inlet valve wrench for standard inlet valves	HF20012280	N/A
1 1/2" and 2" inlet valve wrench for standard or latching inlet valves	HF20012281	HF20012281

N/A = not available

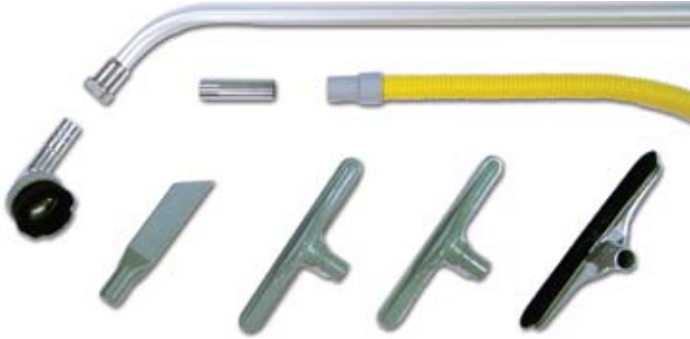


HF10389303

HF20014517

HF20012281

### Hose and Tool Kits



#### Commercial Duty Hose and Tool Kit – “AFW” Style, P/N 302RMA6031

This commercial duty kit comes complete with the following hose and tools.

Description	1½"
5" round aluminum dust brush with horsehair bristles	HF00896124
11" plastic crevice tool	AFW6511
14" non-metallic floor tool with nylon bristles	AFW6505
14" non-metallic squeegee tool	AFW6506
14" non-metallic carpet tool	AFW6507
Double curved aluminum floor rod with tool swivel	AFW6502
Flexible plastic wire reinforced hose, 25 foot, with nipple	AFW7515250

#### Industrial Duty Hose and Tool Kit – “AFW” Style, P/N 301RMA6031

This industrial duty kit comes complete with the following hose and tools.

Description	1½"
5" round aluminum dust brush with horsehair bristles	HF00896124
15" plated steel crevice tool	HF00896129
6" aluminum utility tool (without bristles)	HF00896117
13" steel floor tool with nylon bristles	AFW2271
Double curved aluminum floor rod with tool swivel	AFW1003
Flexible plastic wire reinforced hose, 25 foot, with nipple	AFW7515250

#### Commercial Duty Hose and Tool Kit – “HF” Style, P/N 300RMA6031

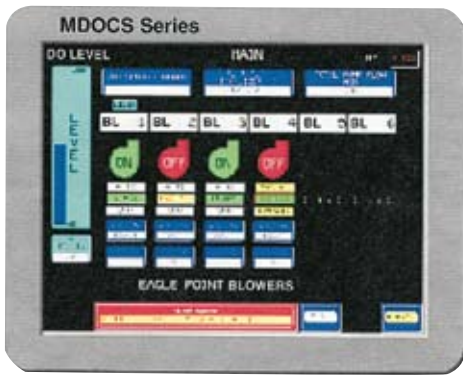
This commercial duty kit comes complete with the following hose and tools.

Description	1½"
Tapered hand tool adapter (when using tool with hose)	HF00896145
5" round aluminum dust brush with horsehair bristles	HF00896124
15" plated steel crevice tool	HF00896129
14" cast aluminum floor tool with nylon bristles	HF00896138
54" double curved aluminum floor rod with hose swivel	HF10392605
1½" x 25-foot Style F plastic wire reinforced hose	HF10392562

### Storage



Description	
Steel tool cabinet – 36" x 18" x 78"	AFW1646
Steel hose rack – holds up to 50 feet of 1½" or 2" hose	AFW0526



## Gardner Denver® Monitoring and Control Systems

Whether you're responsible for a wastewater treatment plant, the smelting operation at a foundry or the precise material handling needs of a manufacturing facility, Gardner Denver offers control systems to properly operate your Lamson and Hoffman blowers and exhausters and protect them from conditions that may lead to catastrophic mechanical failure, costly downtime or voiding your manufacturer's warranty. At Gardner Denver we

engineer a variety of control systems and monitors capable of providing you with the protection and information you need to keep your operation running at peak efficiency.

Our control systems can monitor a variety of conditions that include motor current, motor temperature, blower vibration, bearing temperature, bearing oil level, discharge air temperature, inlet vacuum and outlet pressure.



## Genuine Gardner Denver Factory Service and Parts

- Factory Trained Service Professionals
- On-site, On-Demand Service
- System Optimization
- Blower Remanufacturing
- Training, Troubleshooting and Consulting
- Warranty Renewal Programs
- Genuine GD Quality Replacement Parts
- Highest Quality Lubricants
  - AEON® Centrifugal Lubricating Grease
  - AEON CF-46 Centrifugal Blower Oil



## Accessories

- Engines
- Motors
- Turbines
- Variable Frequency Drives
- Butterfly Valves
- Check Valves
- Filters
- Silencers
- Expansion Joints
- Gauges
- SmartMeter
- Blower Control Panels

# Gardner Denver®

[www.GardnerDenverProducts.com](http://www.GardnerDenverProducts.com) [cf.blowers@gardnerdenver.com](mailto:cf.blowers@gardnerdenver.com)

Gardner Denver, Inc. 100 Gardner Park, Peachtree City, GA 30269

New Equipment Sales: (800) 543-7736 Phone: (770) 632-5000 Fax: (700) 486-5628  
 Aftermarket Parts Sales: (800) 982-3009 Phone: (770) 632-5000 Fax: (700) 486-5530



Member



Please recycle after use.

Specifications subject to change without notice

©2010 Gardner Denver, Inc. Litho in U.S.A.  
 GDCF-1-205-2nd Ed. 01/10