



**GE INDUSTRIAL MOTORS**  
a **WOLONG** company

Saturday, December 15, 2018

Technical Data Center  
3050 post Oak Blvd.,  
Suite 630, Houston,  
TX 77056  
Phone: +1 877-450-6026

Customer: EAST COAST ELECTRICAL  
245 BERT WINSTON RD  
YOUNGSVILLE, NC 27596

DataPack Document, Version: v18121855.01

**Inside Sales Representative:**

**Inside Sales Rep Phone:**

**Model Number:** 5KS511SAA1077

**Sales Order No:** 5200025660

**Order Line No:** 2.1

**Instruction Manual:** GEI-56128

**Connection Diagram:** GEM2034E-FIG2

**Alternate Phone:** 260-439-2000

**Customer Order No:** 17277

**Customer Item No:**

**Customer Part No:**

**Outline Drawing:** 239C6B00XA

**Accessory Connection Diagrams**

**Bearing Thermocouple:** None

**RTD:** 235A3027XY

**Thermostat:** None

**Bearing RTD:** 235A3027NA

**Heater:** 3027JE-1C

**Thermistor:** None

**Winding Thermocouple:** None

**Revision History**

<u>Version</u>	<u>Date</u>	<u>Comments</u>
v18121855.01	12/15/2018	Original Version

**Distribution Information**

<u>Quantity</u>	<u>Recipient</u>
1	daniel.moreno@ge.com DANIEL.MORENO@GE.COM E-Mail Distribution
1	diane@eastcoastmotor.com DIANE@EASTCOASTMOTOR.COM E-Mail Distribution

<u>Quantity</u>	<u>Recipient</u>
1	tim@eastcoastmotor.com TIM@EASTCOASTMOTOR.COM E-Mail Distribution
1	Tripati.Nath@ge.com TRIPATI.NATH@GE.COM E-Mail Distribution



**GE INDUSTRIAL MOTORS**  
a **WOLONG** company

Saturday, December 15, 2018

Technical Data Center  
3050 post Oak Blvd.,  
Suite 630, Houston,  
TX 77056  
Phone: +1 877-450-6026

Customer: EAST COAST ELECTRICAL  
245 BERT WINSTON RD  
YOUNGSVILLE, NC 27596

DataPack Document, Version: v18121855.01

<b>Customer Order / Item:</b>	17277	<b>Sales Order No:</b>	5200025660
<b>Customer Part:</b>	None	<b>Order Line No:</b>	2.1
<b>MODEL NUMBER:</b> 5KS511SAA1077		<b>Estimated Weight:</b> 5800 Lbs	
Outline Drawing: 239C6B00XA		Time Rating: CONT	
Connection Diagram: GEM2034E-FIG2		Enclosure: TEFC	
Instruction Book: GEI-56128		Encl Construction: SD	
Design Code: 50BD0158EA		Ambient Max(°C): 40	
Type: KS		Insulation Class: F	
Frame: 5011LS		NEMA Design: B	
Phases: 3		Nominal Efficiency: 95.4%	
Poles: 2		3/4 Load Efficiency: 95.7%	
Output Power: 400HP 298.3KW		KVA Code: G	
RPM: 3570		Max KVAR: 44.4	
Voltage: 2300/4000		Power Factor: 94.5	
Hertz: 60		Bearing - DE: 6315ZC3	
Amps - FL: 83.1/47.8		Bearing - ODE: 6315ZC3	
Service Factor: 1.15			

**Enclosure is Totally Enclosed Fan-Cooled**

**Stamped Nameplate Notes:**

HTR LDS HE1-HE2 115V 350W  
ROT CW FACING ODE LEAD/PH SEQUENCE 1-2-3/1-2-3  
INVERTER DUTY  
ALTERNATE RATING FOR PWM CONTROL:1.0SF 40C AMBIENT  
VAR TORQUE RANGE 0-60 HZ  
FOR DIRECT COUPLED LOAD ONLY  
NOTE TO MANUFACTURING :  
STAMP NP249A5574BE AS PER 5KS511SAA1077RA1 & MOUNT  
BOTH NAMEPLATES ON MOTOR 5KS511SAA1077

**Additional Information:**

2P - LS EXTN  
C/BOX 2500 CU IN - 2(4.00" NPT)  
INPRO SEAL BOTH ENDS  
OIL RESISTANT SLEEVING ON LEADS  
100 OHM WINDING RTD LEADS TO AUX BOX W/TERM BOARD OPP C/BOX  
SUGGESTED WINDING RTD SETTINGS



**GE INDUSTRIAL MOTORS**  
a **WOLONG** company

**Saturday, December 15, 2018**

**Technical Data Center**  
3050 post Oak Blvd.,  
Suite 630, Houston,  
TX 77056  
Phone: +1 877-450-6026

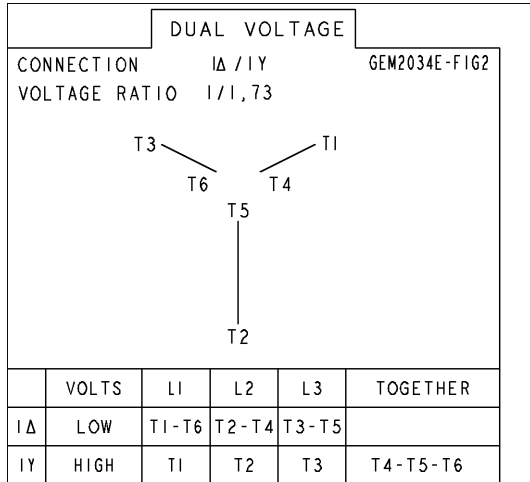
**Customer: EAST COAST ELECTRICAL**  
245 BERT WINSTON RD  
YOUNGSVILLE, NC 27596

**DataPack Document, Version: v18121855.01**

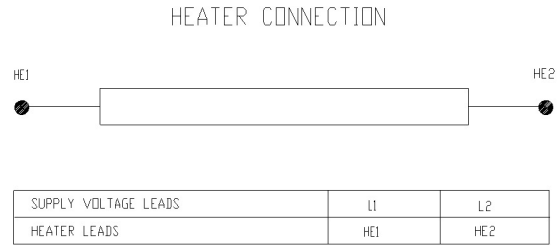
ALARM 165C TRIP 175C  
115V HTR LDS TO AUX BOX W/ TERM BOARD OPP C BOX  
SPACE HEATER CAUTION NAMEPLATE  
BEARING RTD 100 OHM ON BOTH ENDS  
SUGGESTED BEARING RTD SETTINGS  
ALARM 115C TRIP 125C  
NEMA TYPE GRD PAD  
F1 MOUNTING  
SIMILAR TO 5KS511SAA168B EXCEPT INPROSEAL AND  
ADDITIONAL NAMEPLATE FOR 350 HP RATING PROVIDED

Diagrams for Model: 5KS511SAA1077

**Connection Diagram**  
**GEM2034E-FIG2**



**Heater Connection**  
**3027JE-1C**



**Performance Characteristics**

1st Winding 1st Connection

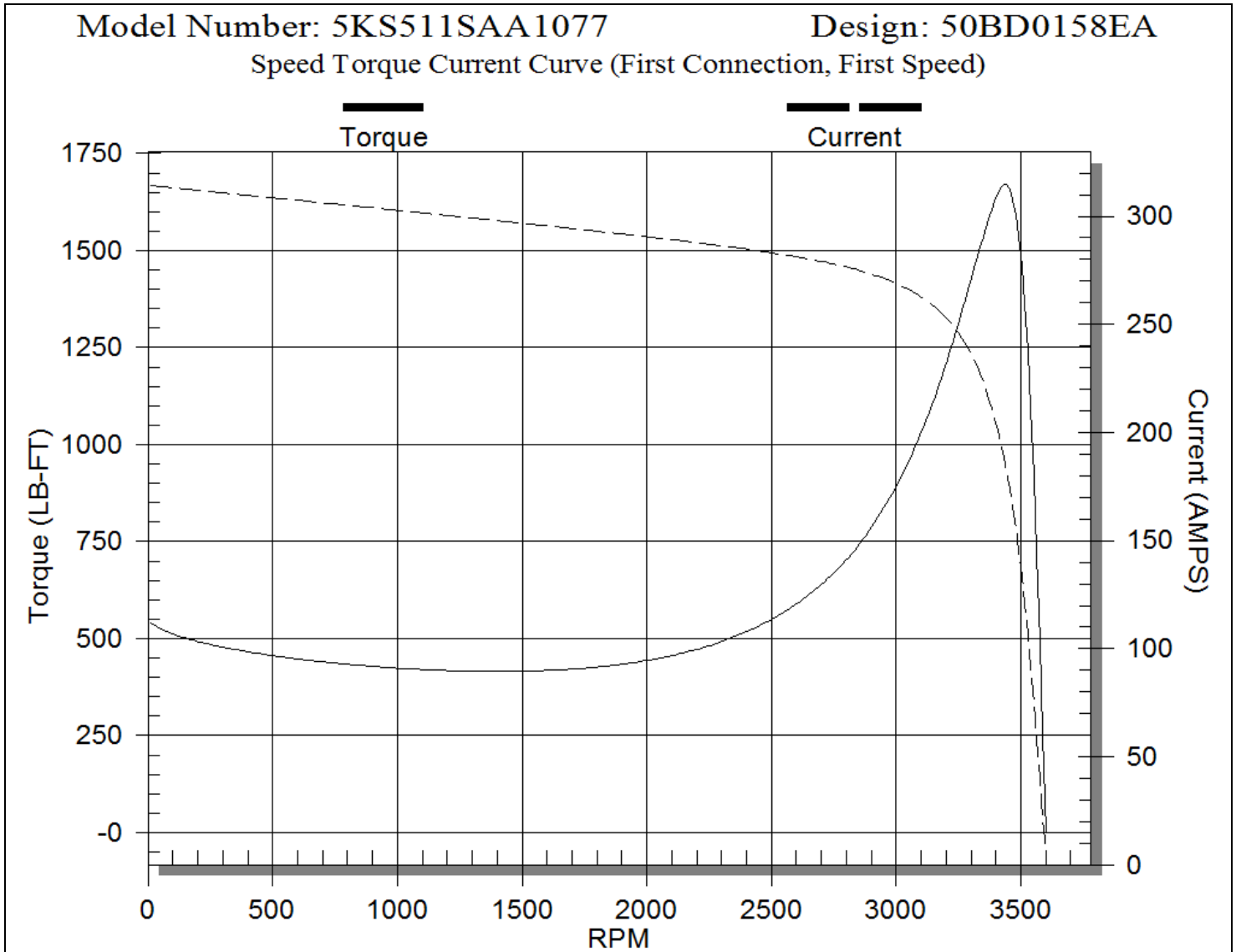
**Design: 50BD0158EA**

LOAD %	125.0	115.0	100.0	75.0	50.0	25.0	0.0
% EFF	95.03	95.24	95.40	95.72	95.40	93.17	0.00
% PF	93.87	94.12	94.50	94.08	92.11	82.53	9.23
AMPS	60.34	55.24	47.80	35.86	24.50	14.00	7.12

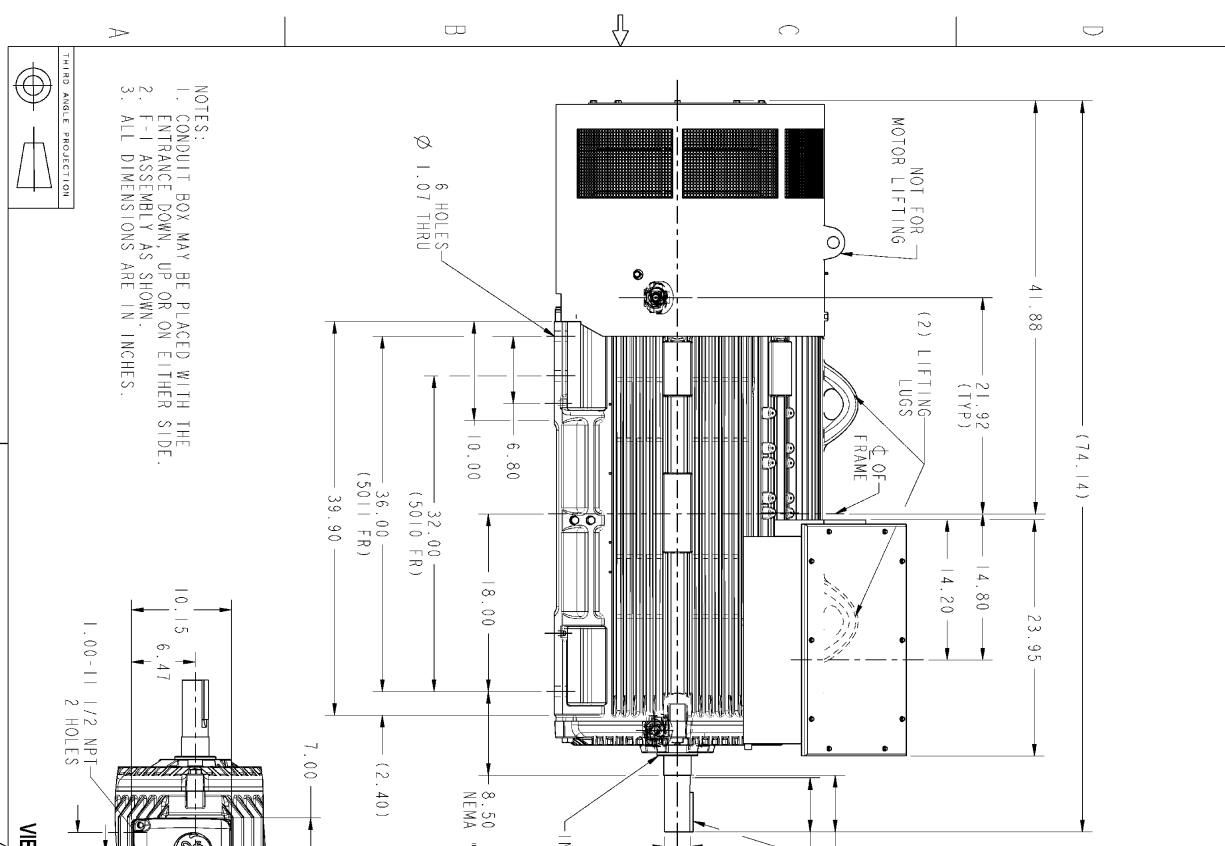
**TORQ(FL)#FT** 588.38      **TORQ(LR)%FL** 94.52      **TORQ(BD)%FL** 283.53  
**AMPS(LR)** 314.25      **PF AT START** 0.17

This motor is capable of two cold or one hot start with a maximum connected load inertia of 1215.0 Lb-Ft Sq (51.2 Kg-meter Sq) at 100% voltage, where the load torque varies with the square of the speed. Acceleration time with maximum inertia and the above load type is 37 seconds. Safe stall time at 100% voltage is 74 seconds cold, 45 seconds hot. Rotor inertia is 126.61 Lb-Ft Sq (5.335 Kg-meter Sq).

**Open Circuit A-C:** 2.114      **Short Circuit D-C:** 0.035  
**Short Circuit A-C:** 0.051      **X/R Ratio:** 13.336  
**Stator Slots:** 48      **Rotor Slots:** 40

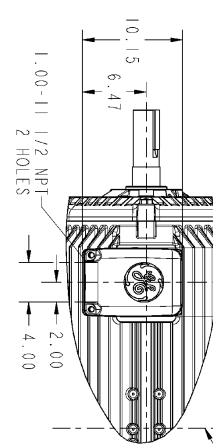
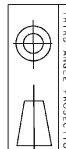


14 13 12 11



NOTES:

1. CONDUIT BOX MAY BE PLACED WITH THE ENTRANCE DOWN, UP OR ON EITHER SIDE.
2. F-I ASSEMBLY AS SHOWN.
3. ALL DIMENSIONS ARE IN INCHES.



SIGNATURES		DATE	
MODEL	5KS511SAA1077	REV	000
DRAWN	BIASIH	DATE	12/27/18
CHECKS	KARTHIM	DATE	12/27/18
ENGR	TRINAI	DATE	12/27/18
QA			
ISSUED	BIASIH	DATE	12/27/18

TITLE		SCALE	
GE INDUSTRIAL MOTORS of WINDOR company		SCALE	9:125
OUTLINE		REF. NO.	239C6B00XA
QUANTUM 5010/5011 LS TFC 2500 CU. IN. C/BOX			
ACC BOX, BTD/TTC, IMPROSEAL			
239C6B00XA			
SHEET 1 OF 1			

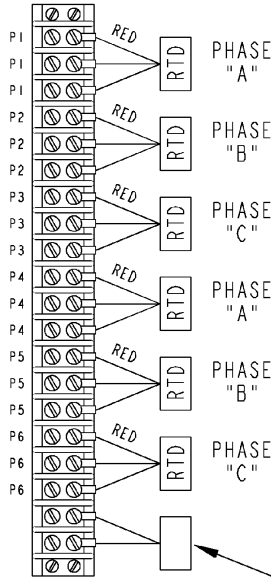
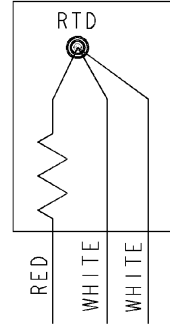
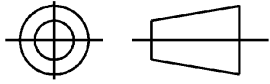
REVISIONS

REV	DESCRIPTION	DATE	APPROVED

239C6B00XA 000



SHEET <b>2</b>	GE PROPRIETARY INFORMATION <small>This document is the property of General Electric Company ("GE") and contains proprietary information of GE. This document is loaned on the express condition that neither it nor the information contained therein shall be disclosed to others without the express written consent of GE Industrial Systems, and that the information shall be used by the recipient only as approved expressly by GE Industrial Systems. This document shall be returned to GE upon its request. This document may be subject to certain restrictions under U.S. export control laws and regulations.</small>	REVISIONS			
	THIRD ANGLE PROJECTION	REV.	DESCRIPTION	DATE	APPROVED
		1	ISAAC# 15-0790 HARIKIRAN	07/28/15	DHEERAJ
		2	ISAAC# 16-0422 SAGAR K	05/04/2016	ADINARAYANA



AUXILIARY LEADS (NOTE 1)

NOTE 1: AUXILIARY LEADS SHOWN MAY OR MAY NOT BE PROVIDED IN MOTOR.  
 NOTE 2: SPARE RTDS (P7 & P8) FURNISHED IN CASE OF FAILURE IN OTHER RTDS (P1-P6). PHASE LOCATION WILL DEPEND UPON NUMBER OF POLES WINDING CONFIGURATION.

Part must conform to SI 900000 Sect. 4, Toxicity Procedure

FOR ADDITIONAL INFO REFER TO:	SIGNATURES	DATE	<b>GE Motors</b> GENERAL ELECTRIC COMPANY	
APPLIED PRACTICES	MODEL		TITLE <b>CONNECTION DIAGRAM</b> WINDING RTD & AUXILIARY LEADS	
DIMENSIONS ARE IN INCHES	DETAIL	VIVEK 06/26/15		
TOLERANCE ON: 1 PL DECIMALS ± 0.1 2 PL DECIMALS ± 0.02 3 PL DECIMALS ± 0.005 ANGLES ± 0.5 FRACTIONS ±	CHECKED	KARTHIK 06/26/15	SIZE DRAWING <b>235A3027XY</b> REV <b>2</b>	
	ENGRG			
	NFG			
	QUALITY			
FINISH	ISSUED	VIVEK 06/26/15	SCALE: N. T. S.	REF: - 235A4594AX
MATERIAL	SOLID MODEL: MODEL NAME			SHEET 1 of 1



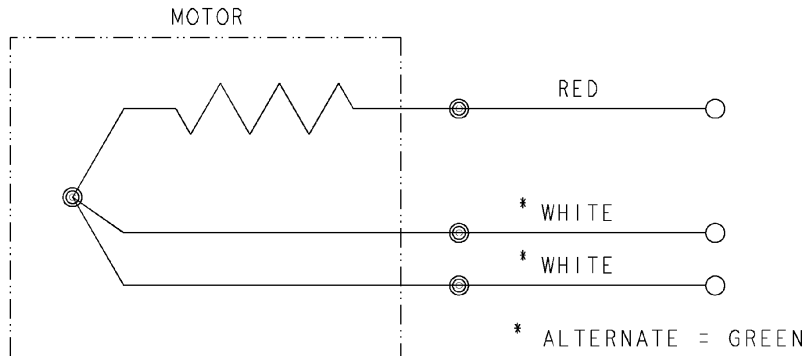
235A3027XY

SIZE DRAWING NO. A

REV SH SIZE DWG NO A	THIRD ANGLE PROJECTION		REVISIONS		
		REV	DESCRIPTION	DATE	APPROVED
		1	ISAAC #12-1124	HARI	11/19/12

**CONFIDENTIAL AND PROPRIETARY**  
 This document is the property of General Electric Company and contains proprietary and confidential information of the Motor Business Group (MBG). The document is loaned on the express conditions that neither it nor the information contained therein shall be disclosed to others without the express consent of MBG and that the information shall be used by the recipient only as approved expressly by MBG. Also, the document shall be returned to MBG upon its request.

# BEARING RTDS



UNLESS OTHERWISE SPECIFIED DIMENSIONS ARE IN INCHES TOLERANCES ON: 2 PL DECIMALS ± 3 PL DECIMALS ± ANGLES ± FRACTIONS ± MATERIAL: APPLIED PRACTICES:	SIGNATURES	DATE	<b>GE Motors</b> Fort Wayne, Indiana	
	DRAWN D.E. BAIR	12/16/92		
	CHECKED D.E. BAIR	12/16/92		
	ENGRG K. DESAI	12/16/92		
	ISSUED D.E. BAIR	12/16/92	CONNECTION DIAGRAM BEARING RTDS	
	CAD NO. F500:235A3027NA	SIZE A	FSCM NO	DWG NO 235A3027NA
		SCALE 1/1		SHEET 1 OF 1

DISTR TO