

SanDisk Connect™ Wireless Media Drive

USER MANUAL (For Use with iOS™ Mobile Devices)



SanDisk®
a Western Digital brand

SanDisk is a trademark of Western Digital Corporation or its affiliates, registered in the United States and other countries. SanDisk Connect is a trademark of Western Digital Corporation or its affiliates. The SD, SDHC and SDXC marks are trademarks of SD-3C, LLC. Wi-Fi is a registered trademark of the Wi-Fi Alliance. Android and Google Play are a trademark of Google Inc. Apple, Apple logo, iPhone, iPad, iPod touch and Mac are trademarks of Apple Inc., registered in the U.S. and other countries. App Store is a service mark of Apple Inc. Amazon, the Amazon logo and the Amazon Apps logos are trademarks of Amazon.com, Inc. or its affiliates. All other trademarks are the property of their respective owners. All other trademarks are the property of their respective owners.

There are third party licenses associated with this product. To see these licenses, please go to www.sandisk.com/products/connect/disclaimer

©2016 Western Digital Corporation or its affiliates. All rights reserved.

Contents

1. Introduction.....	1
Media Drive Overview	1
Features.....	1
System Requirements	2
Supported File Formats.....	2
Laptops, Tablets, and Smart Phones.....	2
Hardware Specifications	2
2. Getting Started.....	3
Charging the Media Drive	3
Battery LED.....	3
Downloading the Media Drive App.....	4
Connecting to the Media Drive.....	4
Loading Content on the Media Drive.....	4
From a Computer.....	5
From a Mobile Device.....	5
3. Working with Media Files	9
Media Drive Application Overview.....	9
Media Drive Main Screen	9
Common In-App Icons	10
Common In-App Actions	10
Selecting Files.....	10
Moving Files.....	11
Uploading Multiple Files	11
Uploading a Single File	14
Downloading Multiple Files	14
Downloading a Single File.....	15

Sharing Your Files	16
Allowing Access to your Media Drive	16
Sending Files to Others	17
Deleting Files and Folders	18
Deleting Files	18
Deleting Folders	19
Searching Files	20
Unsupported File Formats.....	21
Working with Photos.....	21
Photo Screen Icons	22
Viewing Photos	22
Playing Slideshows	23
Editing Photos.....	24
Rotating a Photo.....	25
Enhancing a Photo	25
Correcting Red-eye	25
Cropping a Photo	25
Creating a New Album.....	26
Streaming Videos	28
Playing Music	30
Sorting Music	31
Playing a Song	32
Using the Music Song Controls	33
Using Playlists.....	33
Creating a Playlist.....	33
Adding Songs to a Playlist	36
Controlling Music from Outside the Play Screen	37
Managing the Files Folder	39
Deleting Folders	41

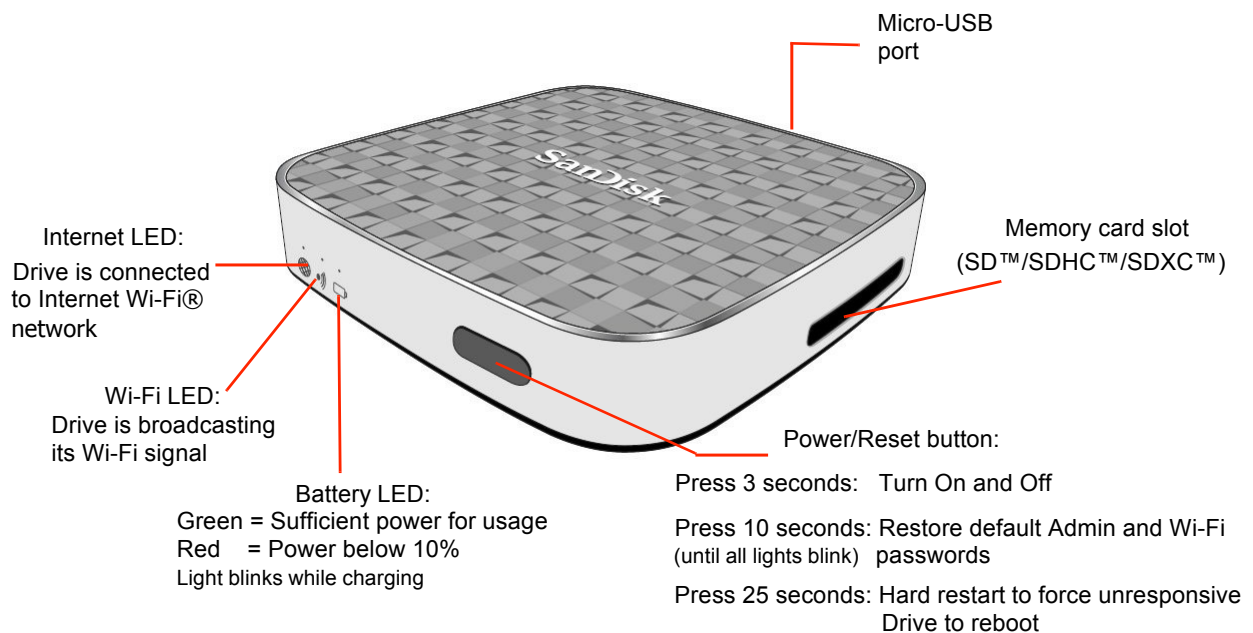
Sorting Files	42
Opening Documents	42
Using a Memory Card	44
Getting Help	45
4. Managing the Media Drive	46
Using the Power Button.....	46
Managing Auto-shutdown	46
Restarting the App	47
Media Drive Settings Overview	48
General Settings	48
Admin Settings	49
Status Gauges	49
Using Admin Settings	50
Admin Login/Logout	50
Change Admin Password	51
Wi-Fi Settings.....	52
Change Wi-Fi Name	52
Set/Change a Wi-Fi Security Password	54
Connect to/Disconnect from the Internet	55
Connecting	55
Disconnecting	57
Upgrade Media Drive	58
Restore Factory Settings	61
Format Drive	62
USB Access	63
5. Product and Safety Information	64
Product Specifications	64
Regulatory Information	64
Safety and Care	66

Cleaning	67
Maintenance and Storage	67
Standard Maintenance	67
Long Term Storage	68
Recycling	68
Index	69

1. Introduction

Media Drive Overview

The SanDisk Connect™ Wireless Media Drive stores, shares, and streams digital content wirelessly across multiple mobile devices.



Features

These are some of the things you can do with the Media Drive:

- **Share media with others.** The Media Drive functions as a mobile Wi-Fi Access Point. Up to eight people at one time can select the Media Drive Wi-Fi network on their mobile devices and view media stored on the Drive. Up to five people can watch high definition videos simultaneously. Got three kids who want to watch three different movies on a plane trip? No problem.
- **Browse the Internet while accessing content from the Media Drive.** In areas where Wi-Fi is available, you can stream content from the Media Drive and access the Internet at the same time.

- **Use the Media Drive to connect two mobile devices to a Wi-Fi network.**
Rather than paying two separate fees to connect a smart phone and a tablet to a hotel Wi-Fi network, you can connect your Media drive to the hotel Wi-Fi and then connect two mobile devices to the Media Drive.

System Requirements

- Mobile devices running iOS version 6.0 or higher or other Wi-Fi-enabled devices with a web browser
- Computers running Windows® 8, Windows 7, Windows Vista®, Windows XP or Mac OS 10.6, or later operating systems
- Supported web browsers include Chrome, Firefox, Internet Explorer and Safari

Supported File Formats

Laptops, Tablets, and Smart Phones

- Any file formats supported by the device

Hardware Specifications

- Drive Capacity: 32 GB or 64 GB¹
- USB 2.0 port
- Battery: Non-user replaceable lithium-ion battery
- Battery Life: Up to 8 hours of continuous streaming
- Maximum Wi-Fi range: 150 feet (45 meters)
- Media Drive Internal Memory File System: exFAT

¹ 1GB=1,000,000,000 bytes. Actual user storage less.

² Based on streaming 720p content at 2mbps to one device; actual life and performance may vary depending upon usage and settings; battery not replaceable.

2. Getting Started

Charging the Media Drive

Although the Media Drive is shipped with a charged battery, we urge you to fully charge the Drive before you begin to use it. (This can take up to three hours.)



Battery LED

The battery indicator light on the front the Media Drive indicates the current battery strength and tells you whether the Drive is charging when it's connected to an outlet:

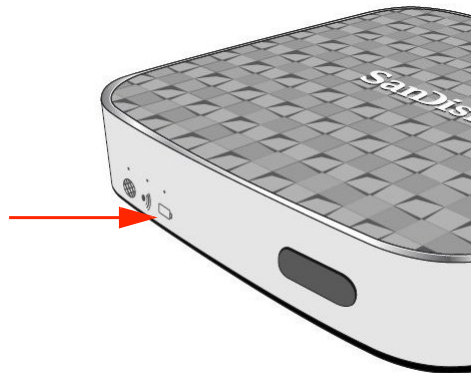


Table 1: Battery LED States

Battery Strength	LED In Use	LED While Charging
Below 20%	Steady red	Blinking Red
Above 20%	Steady green	Blinking Green

Downloading the Media Drive App

After your Media Drive is charged, download the free Media Drive app from the App store onto each mobile device you want to use with the Drive.

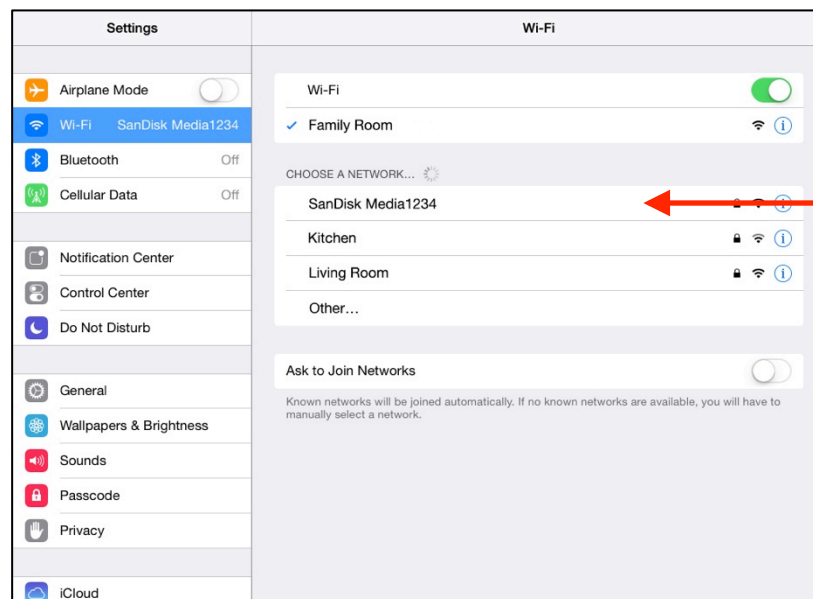
1. Download the Media Drive app.
2. Find the Media Drive app icon on your mobile device and tap it to open the Media Drive app.



Connecting to the Media Drive

Once the app has been installed, connect your mobile device to the Media Drive Wi-Fi network.

1. Make sure your Media Drive is turned on and its Wi-Fi network is connected. The power and Wi-Fi LEDs on the Drive should both be lit.
2. In your mobile device Wi-Fi settings, select the Wireless Drive network from the list of available Wi-Fi networks. It appears as SanDisk MediaXXXX (in the example below, SanDisk Media1234):



Loading Content on the Media Drive

You can load content in two ways:

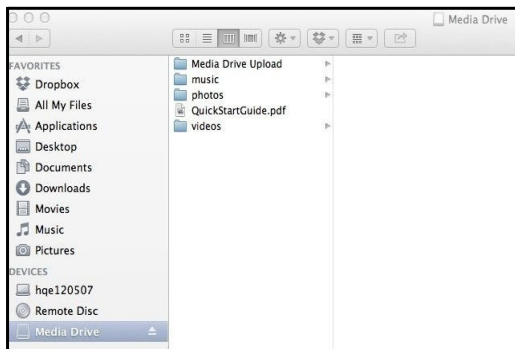
- Connect your Media Drive to your computer and drag and drop content onto it.
- Use the Media Drive app to transfer content via Wi-Fi from a mobile device to your Media Drive.

From a Computer via USB

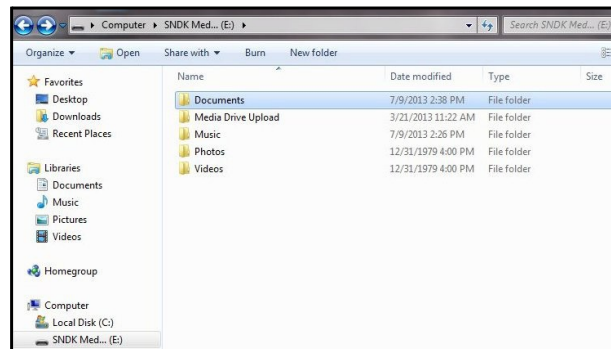
You can transfer content between your Media Drive and your computer using a USB connection.

1. Connect your Media Drive to your computer and open the Media Drive window.
2. Drag and drop music, videos, photos, and documents from your computer into the Media Drive window. You can drop your files anywhere on the Media Drive or you can create folders and add content to them; for example, the **Music**, **Photos**, **Videos**, and **Documents** folders in the windows below:

On a Mac:



On a PC:

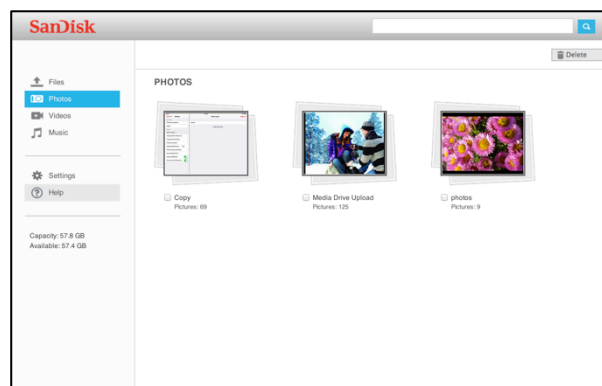


You can also drag content from the Wireless Drive window onto your computer to move files between your mobile devices and your computer.

Note: If you've connected your Media Drive to your computer but the computer doesn't see the Drive, go to the Media Drive **Admin Settings** and make sure **USB Access** is turned on.

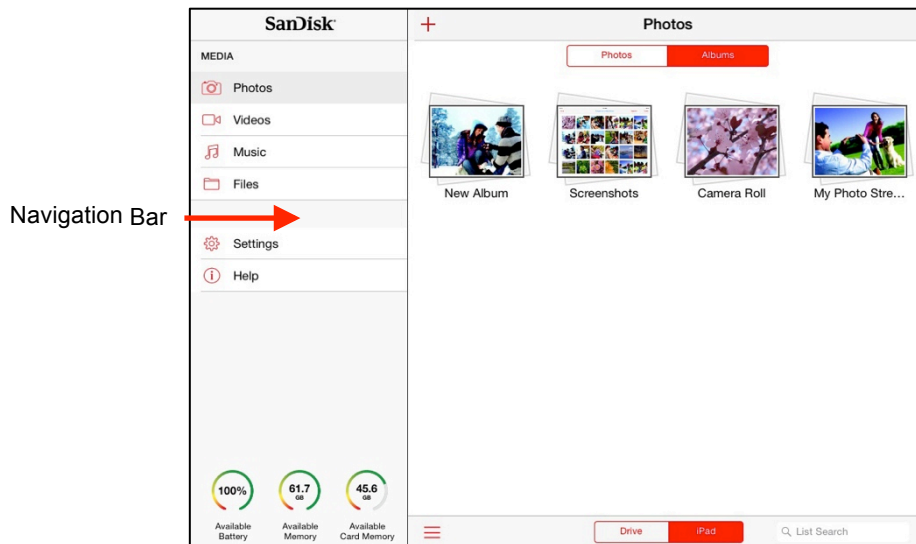
From a Computer Wirelessly (web access)

1. On your computer's Network Settings, connect to the Media Drive's Wi-Fi network
2. Open one of the supported web browsers (Chrome, Firefox, Internet Explorer, Safari)
3. Type in **mediadrive.sandisk.com** or **192.168.11.1**
4. You can now access your content to and from your computer and the Media Drive.



From a Mobile Device

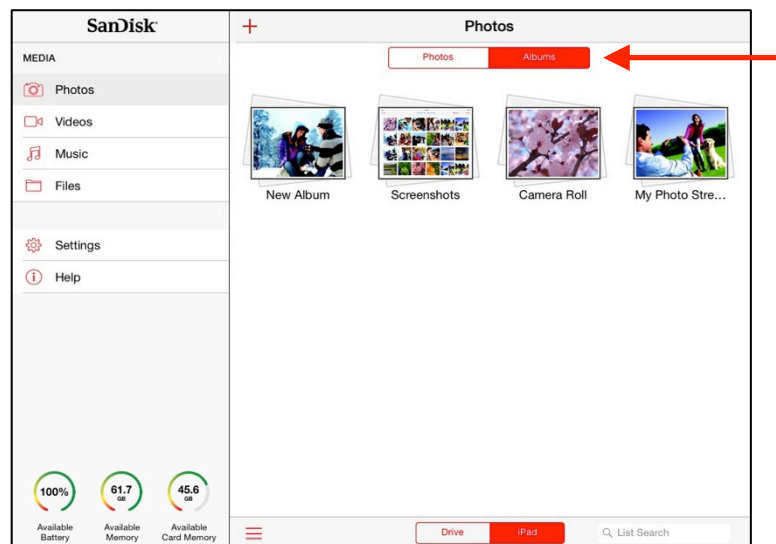
1. In your mobile device Wi-Fi settings, connect to the Media Drive Wi-Fi network.
2. Launch the Media Drive app.
3. In the Navigation Bar, select the type of files you want to upload, then tap **iPad** (or **iPhone** or **iPod touch**) at the bottom of the screen to access the files to be uploaded from your mobile device to the Media Drive:



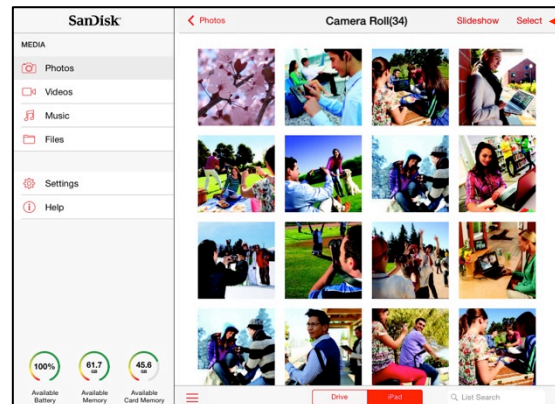
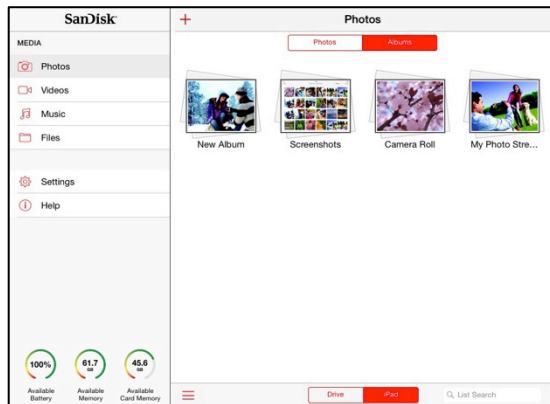
- You can upload videos, photos, or documents, but not music files, from your mobile device to the Media Drive.
- If you're uploading photos, you can select Photos or Albums for easier navigation to the pictures you want to upload


In the example below, photos are being uploaded to a Media Drive.

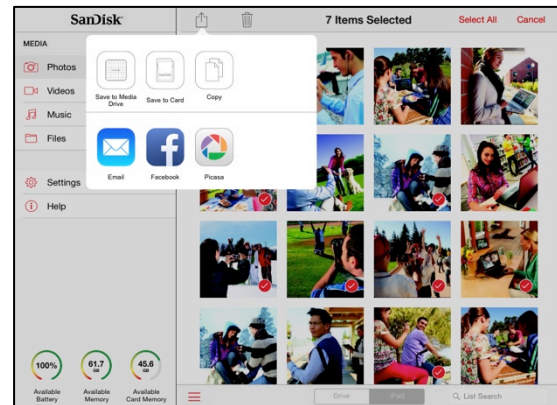
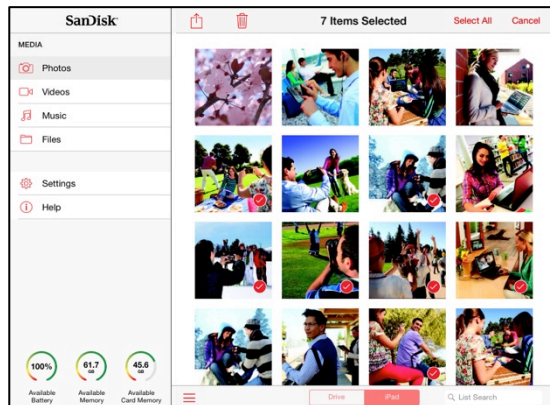
4. Tap **Photos** or **Albums** at the top of the screen and navigate to the pictures you want to upload to the Media Drive:



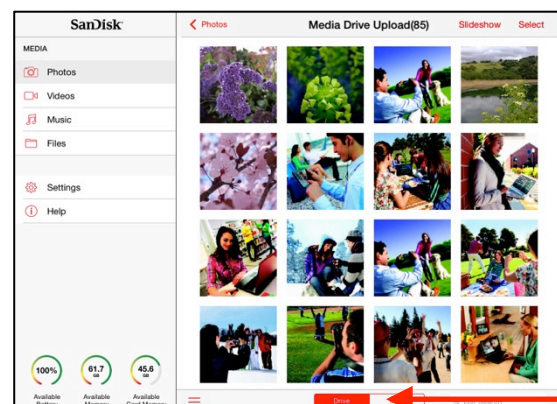
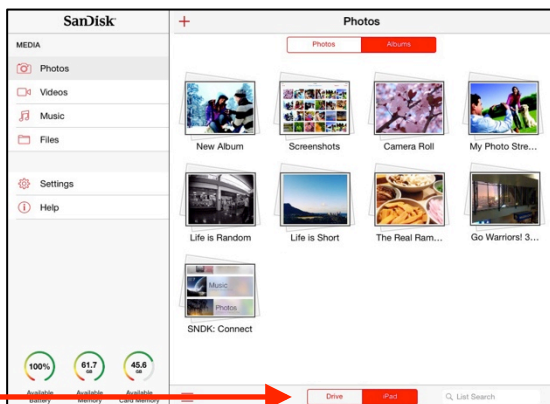
5. Tap the iPad (or iPhone or iPod touch) photo album containing the photos you want to upload, then tap **Select**:



6. Tap photos to select them for upload, then tap the upload icon  at the top of the screen and tap **Save to Media Drive** to load the photos onto your Media Drive:



7. When all photos have been uploaded, switch back from iPad (or iPhone or iPod touch) to Drive

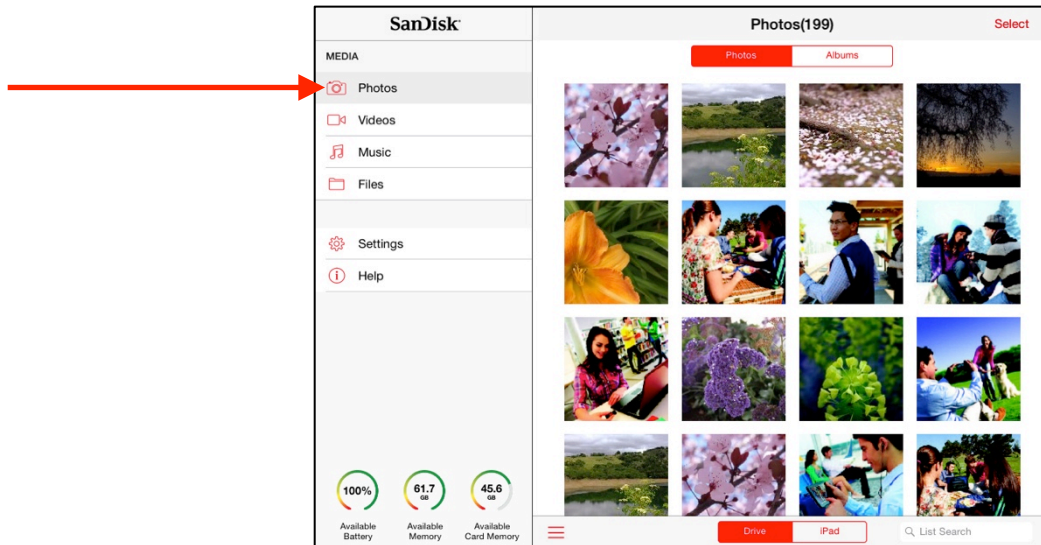


The files have been uploaded to the **Media Drive Upload** folder in **Photos**.

Note: For more detailed information on using photo, music, and video files, see Chapter 3, *Working with Media Files*.

From an SD Card

1. Insert an SD card into the Media Drive.
2. Open up the Media Drive app.
3. Ensure that **Drive** is selected.
4. Select the **Media** type and browse the content (e.g. any photos on the SD Card would be located under **Photos** in the Navigation Bar.)



5. You can also use the SD Card slot to expand the Wireless Media Drive memory

Note: When inserting an SD card, if you do not see the content from the memory card, you can refresh the screen by selecting a different media type in the navigation bar.

3. Working with Media Files

Easily access your content on the SanDisk Connect Wireless Media Drive with the SanDisk Media Drive app. Just download the app from your app store and instantly play songs, stream movies, and view photos and documents stored on your Media Drive or SD card.

Media Drive App Overview

Media Drive Home Screen

When you launch the Media Drive app, the Home screen displays the content that was last viewed prior to closing the app. The example below shows Photos.

All Media Drive content and settings are accessed through the Navigation Bar and in-app icons:

Photo Screen:










- To view all your photos, videos, music, and documents at once, select **Files** in the Navigation Bar.

The Files folder contains all the content stored on the Media Drive and provides access to the files stored on an SD™, SDHC™, or SDXC™ card inserted in the Drive.

Common In-app Icons

These icons are used throughout the Media Drive app. They function in the same way no matter where in the application you're working.

Table 2: Media Drive Icons

	Open Media Drive settings
	Select files to move, share, or delete
	Toggle between showing and hiding the Navigation Bar
	Get answers to questions or problems with the app
	Toggle between files on your Media Drive and files on your iPad or iPhone or iPod touch
	Save/upload selected files
	Delete files

Common In-app Actions

A few basic actions are performed in the same way throughout the Media Drive app regardless of the type of content you're working with or where you are in the app:

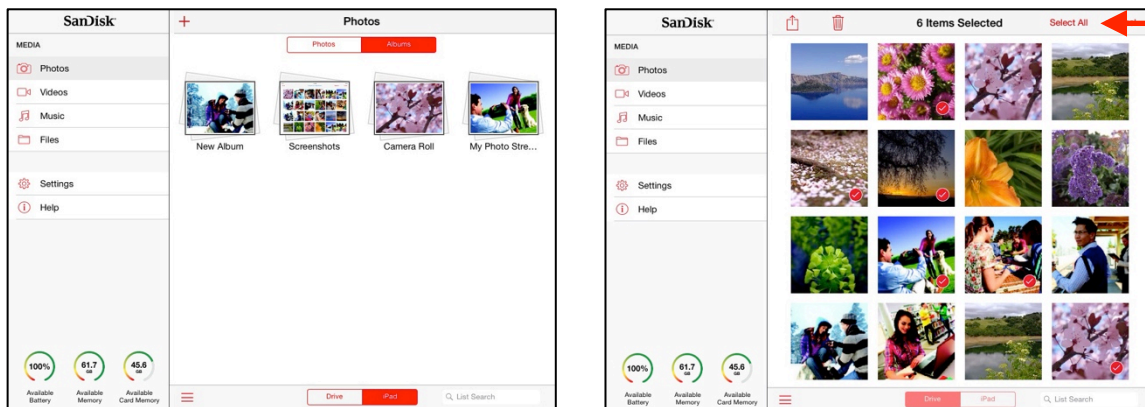
- Selecting Files
- Moving (Uploading, Downloading, or Sharing) Files
- Deleting Files

Selecting Files

You select files in order to move, share, or delete them. Whether you're working with videos, photos, songs, or documents, the selection process is the same.

1. Navigate to the content you want to select.

2. Tap **Select** or **Select All**, then tap the content you want to select:



3. Tap the upload icon  or trash icon  at the top of the screen to move (add to), share, or delete the selected content.

Moving Files

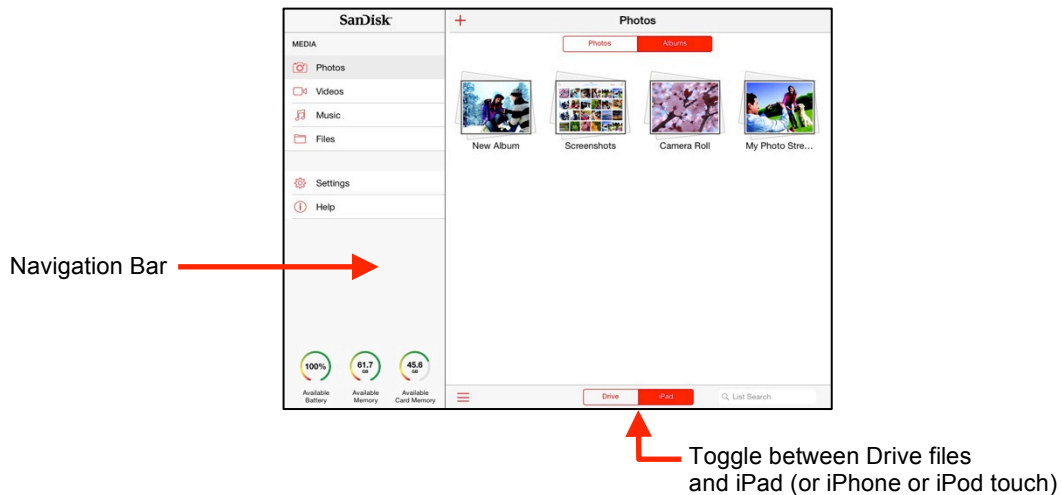
Files can be moved in three ways:

- Upload files from a mobile device to your Media Drive or to a memory card inserted in your Drive.
- Download files from your Media Drive to a mobile device or a memory card.
- Share your files with others directly from the Media Drive mobile app.

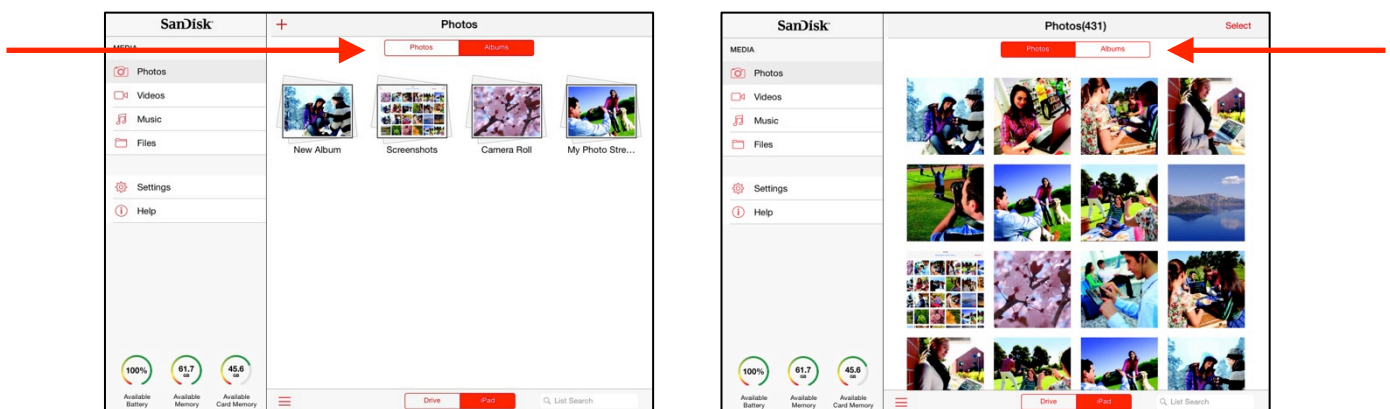
Uploading Multiple Files

To upload files from your iPad (or iPhone or iPod touch) to the Media Drive or an inserted memory card:

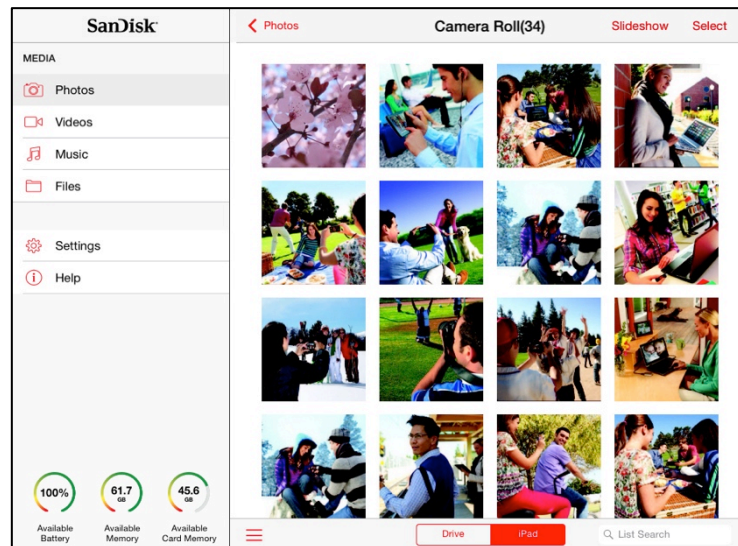
1. In the Navigation Bar, select the type of files you want to upload, then tap **iPad** (or **iPhone** or **iPod touch**) at the bottom of the screen to access the files to be uploaded. In this example, photos are being uploaded:




2. At the top of the screen, tap **Photos** to display all the pictures stored on your mobile device at one time or **Albums** to display specific photos:



3. Navigate to the pictures you want to upload and tap **Select**:



4. Tap photos to select them for upload (you'll see a red check on selected items), then tap the upload icon  at the top of the screen to display the Upload options:




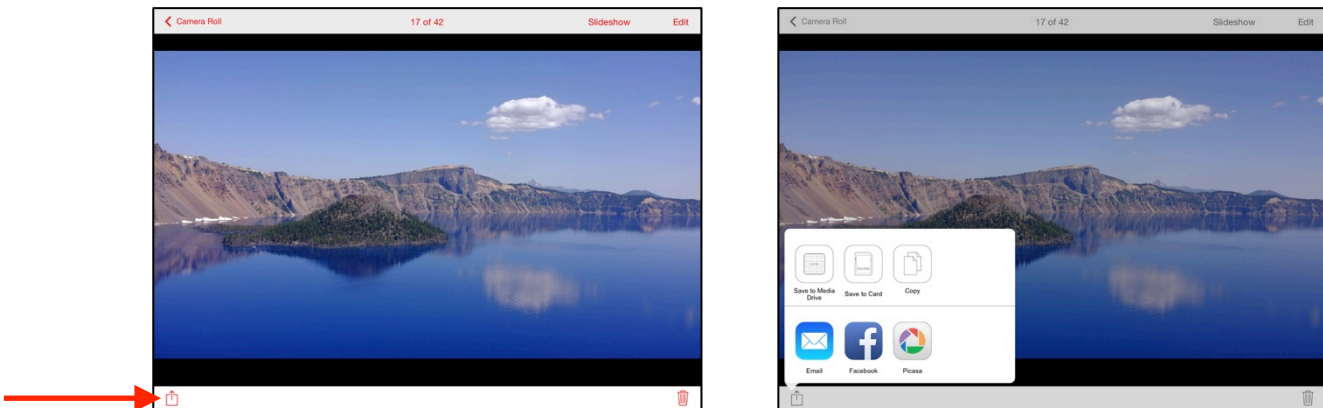
5. Choose whether to add the files to the Media Drive or to a memory card inserted in the Drive:
- **Media Drive Upload:** Upload files from your mobile device to the Media Drive Upload folder on your Drive.

- **Media Drive Card Upload:** Upload files from your mobile device to the Media Drive Card Upload folder on the memory card currently inserted in your Drive.
6. When all photos have been uploaded, switch back from **iPad** (or **iPhone** or **iPod touch**) to **Drive** at the bottom of the screen to find the content you've uploaded.

Uploading a Single File

To upload a single file from your iPad (or iPhone or iPod touch) to the Media Drive or an inserted memory card,

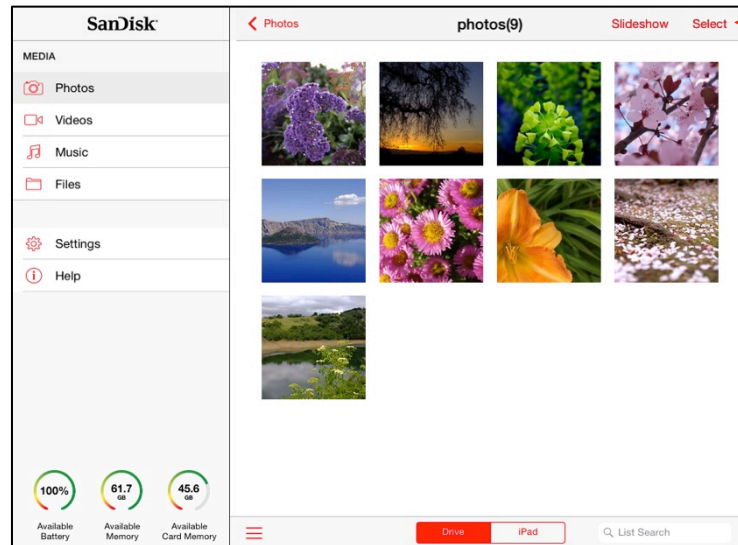
- Open the photo to be uploaded, tap the upload icon  and choose whether to add the file to the Media Drive or to a memory card inserted in the Drive:




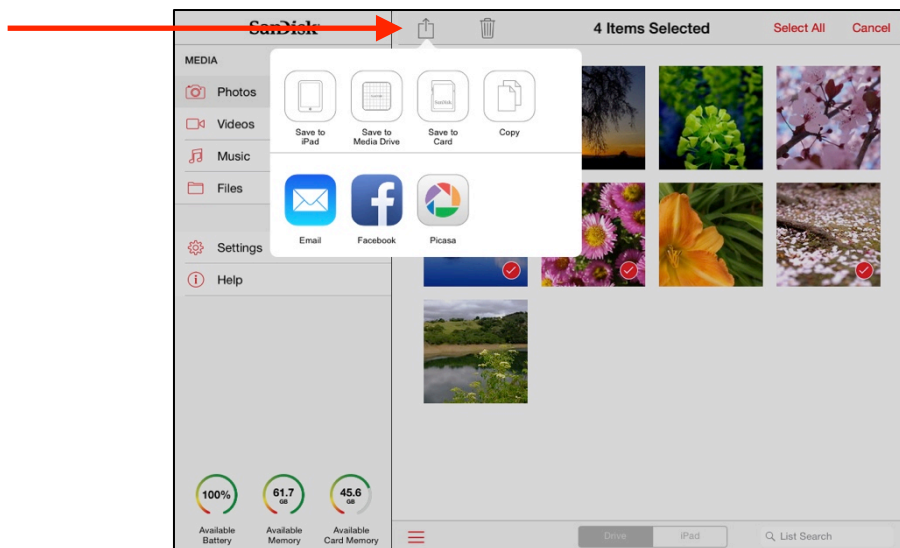
Downloading Multiple Files

To download files from the Media Drive or from an inserted memory card to your iPad (or iPhone or iPod touch):

1. Navigate to the files you want to download, then tap **Select**:




2. Tap the files to be downloaded, tap the upload icon  at the top of the screen to open the Download options:

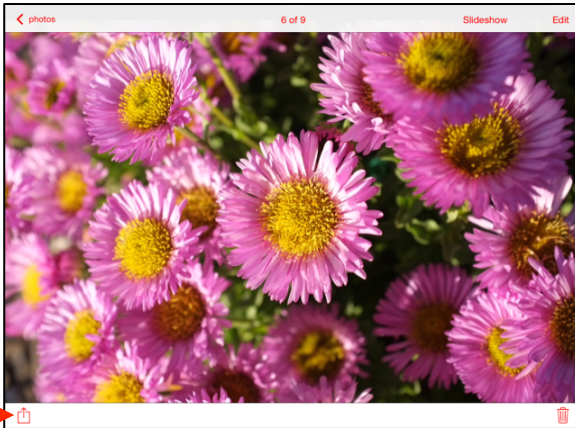


3. Tap **Save to iPad** (or **iPhone** or **iPod touch**) to start the download.
The selected files are downloaded to the Camera Roll album.

Downloading a Single File

To download a single file from the Media Drive or an inserted memory card to your iPad (or iPhone or iPod touch)

- Open the file you want to download, tap the upload icon , and choose **Save to iPad** (or **iPhone** or **iPod touch**) to download the file:



Sharing Your Files

You can share media content in two ways:

- Give others Wi-Fi access to your Media Drive so they can connect to the content on your Drive from their mobile devices.
- Send files via email, social media, messaging, or Bluetooth. The methods available vary depending upon the features provided on your mobile device.

Allowing Access to your Media Drive

You can allow others to connect directly to your Media Drive so they can view your files and download them to their mobile devices.

People sharing your content must install the free Media Drive app on their mobile devices. They do not need to own their own Media Drives.

Suppose you want to share your content with a friend:

1. Make sure she's downloaded the Media Drive app from her mobile device application store.
2. Turn on your Media Drive and place it within range (150 feet/45 meters) of your friend.
3. Tell her the Wi-Fi network name of your Drive so she can find it in the list of available networks in Wi-Fi settings on her mobile device.
4. If your Drive is password-protected, give her the password.


When your friend's mobile device has connected to your Media Drive, she can open the Media Drive app on her mobile device and see your main screen. Now she can view your media content and download it to her mobile device.

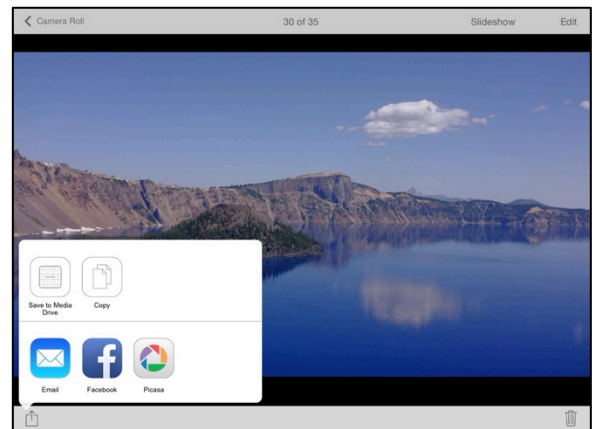
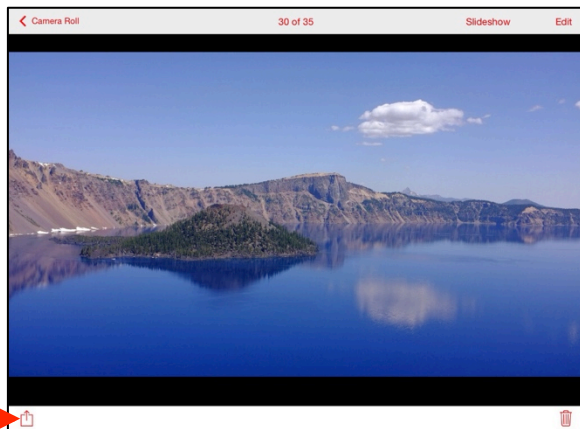
Sending Files to Others

You can share content by sending it to others in a variety of ways: email, social media, messaging, and Bluetooth, to name a few. The available methods vary depending upon the features provided by your mobile device and the apps installed on the device.


Note: Make sure your mobile device is connected to the Internet before you try to share your files. For instructions on how to connect your mobile device to the Internet while you use the Media Drive app, see *Connecting to the Internet* in Chapter 4, "Managing the Media Drive."

The sharing process is the same no matter what type of media content you're sharing. You can share multiple files at one time or share a single file.

1. In the Media Drive app, open a photo you want to share, tap the upload icon , to display the Share options:



– OR –

Open an album, tap **Select**, select photos to share, and tap the upload icon , to display the Share options:




2. Select a method to share your photo and provide the required information (the options available on your mobile device vary).

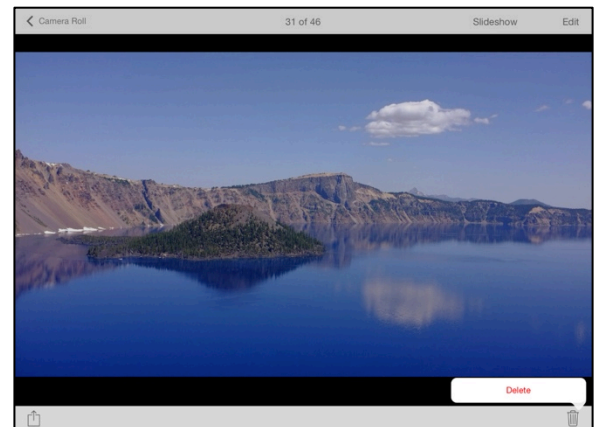
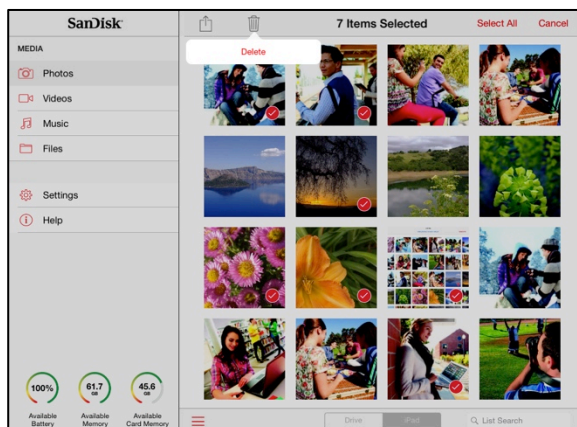
Deleting Files and Folders

You can use the Media Drive app to delete files and folders stored on your Media Drive or memory card, but not those stored on your iPad (or iPhone or iPod touch).

Deleting Files

You delete multiple files or a single file in the same way:

1. Open the file or files to be deleted.
2. Tap the Select icon and select the files to be deleted.
3. Tap the **Trash** icon  (at the top in tile view, at the bottom in single view):

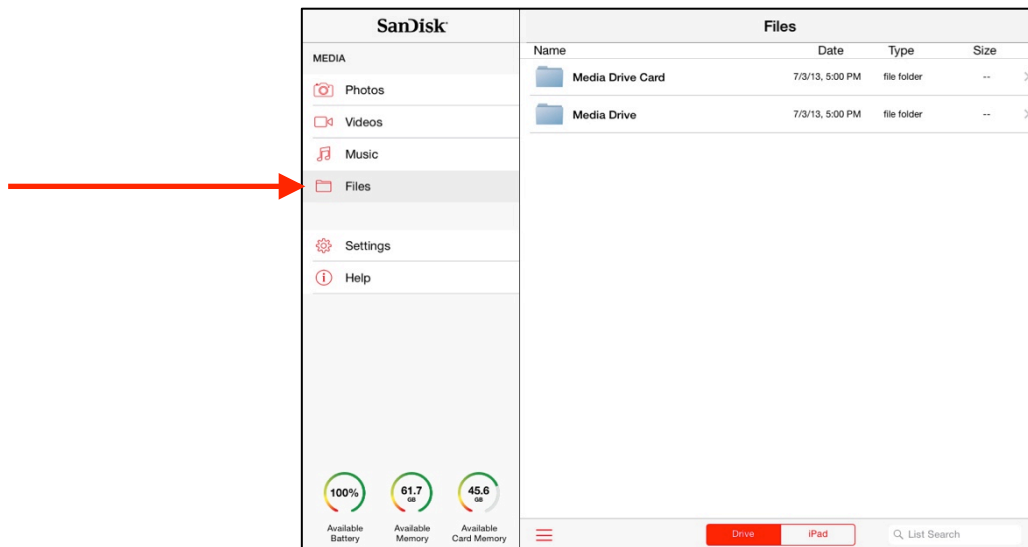



Deleting Folders

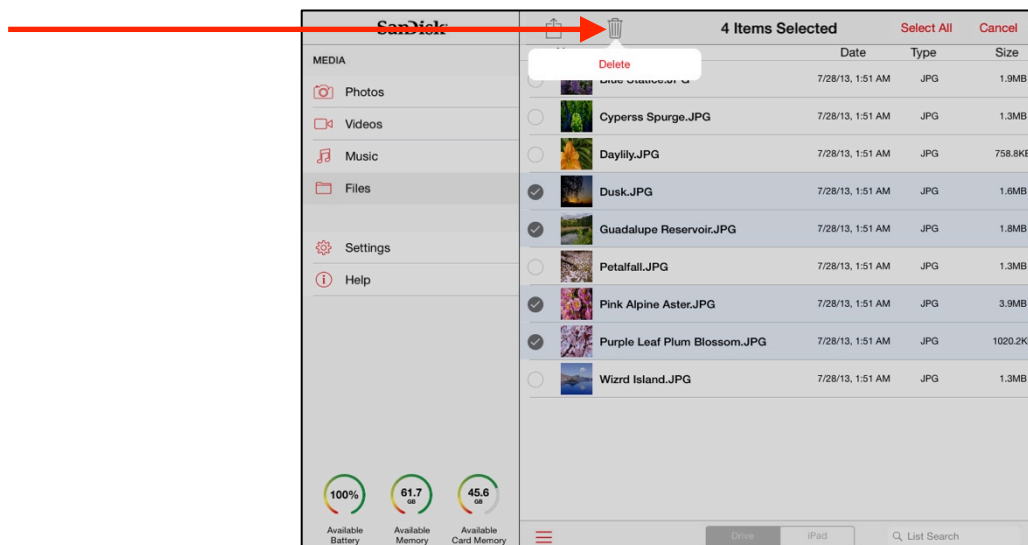
You can delete files from any screen in the Media Drive app, but the only screen from which you can delete folders is the **Files** screen.

To delete a folder:

1. In the Navigation Bar, tap **Files** to display the **Files** main screen:



2. Tap **Media Drive Card** or **Media Drive**, navigate to the files and folders to be deleted, tap **Select** to select the files and folders to be deleted, and tap the trash icon  at the top of the screen:



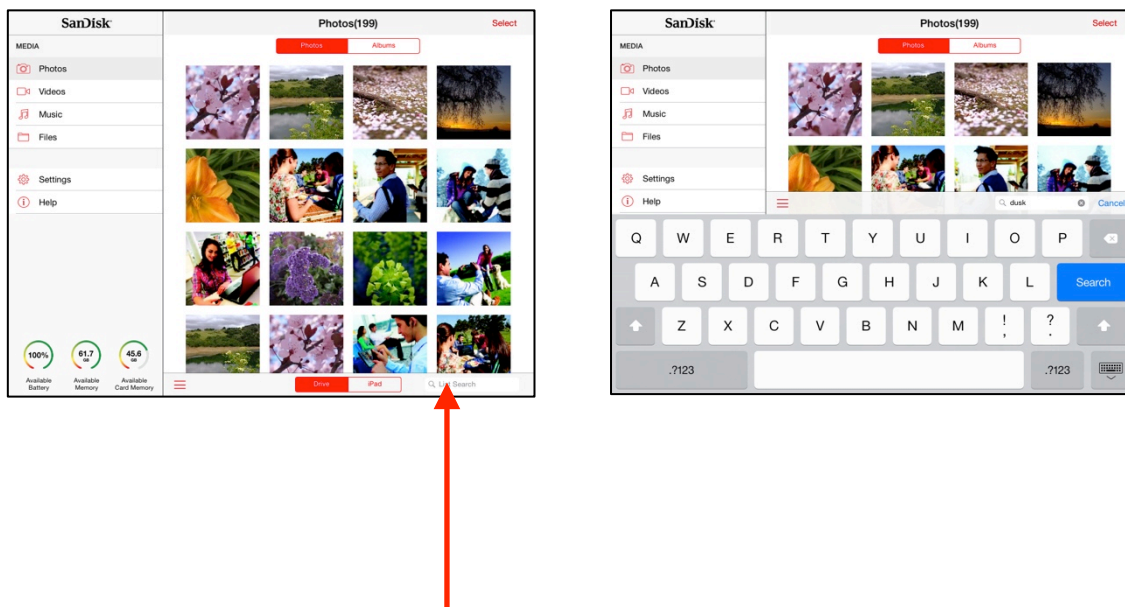
3. Tap the **Trash** icon and confirm that you want to delete these files and folders.

Note: For complete information on how to use the Files folder, see “Managing the Files Folder” in this chapter.

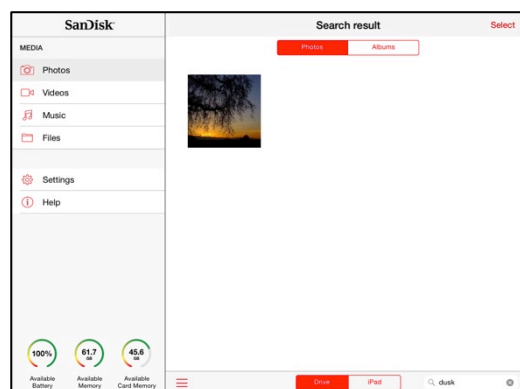
Searching Files

You can search for files on any of the Media Drive app screens. Your search is limited to the files displayed on that screen.

1. Tap the Search area at the bottom of any app screen, enter a search value, and tap **Search**:



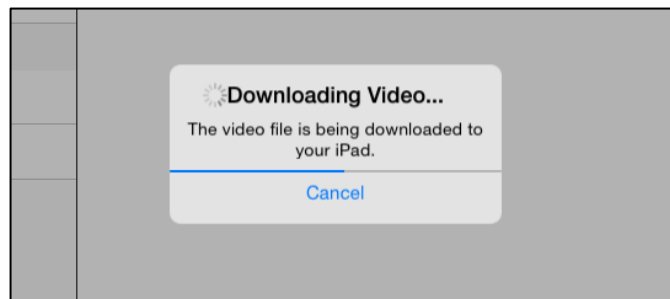
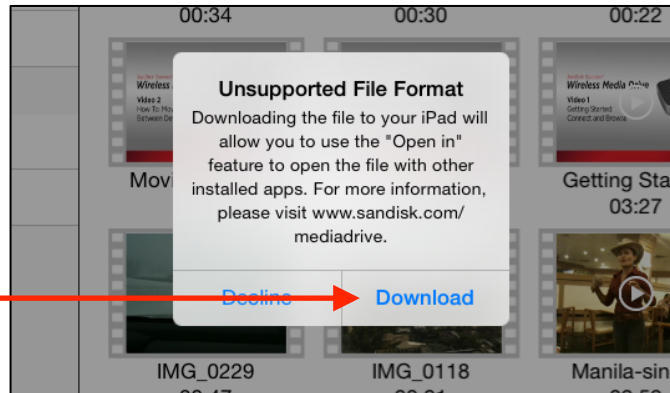
2. Your search results are displayed:



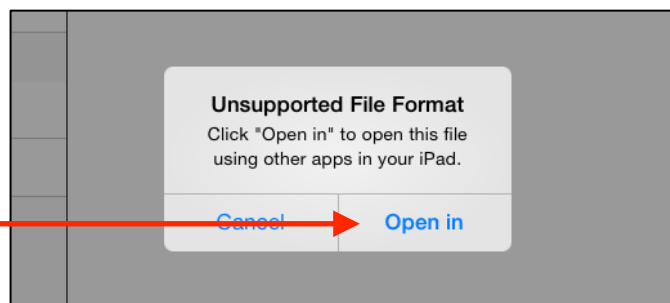
Unsupported File Formats

The Media Drive can open all file formats supported by your mobile device. If you try to open an unsupported format, follow the additional instructions how to access different file formats using 3rd party apps:

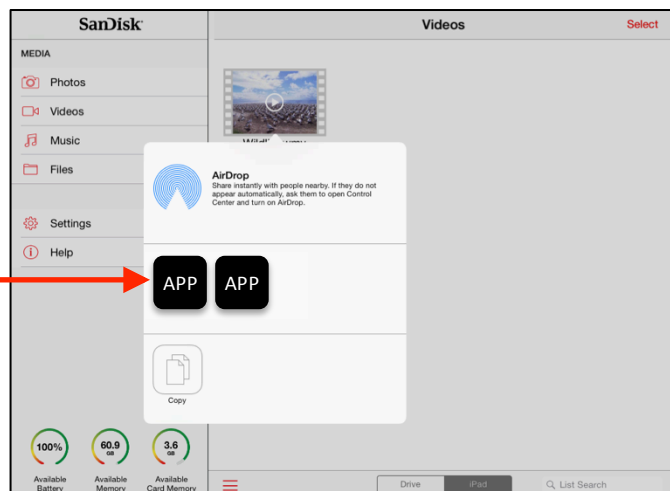
Download the unsupported file to your mobile device



Tap **Open in** to activate app selection window



Select compatible 3rd party app to playback files

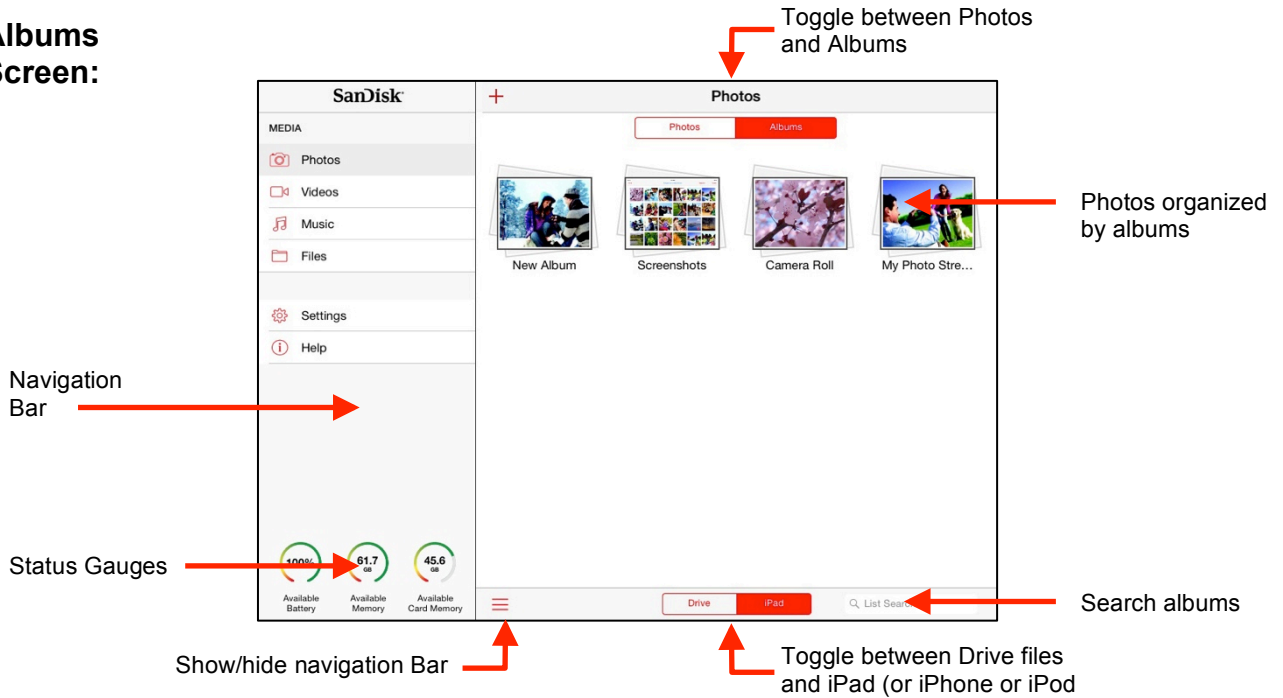


Working with Photos

You can use the Media Drive app to work with photos stored on your mobile device, an inserted memory card, and the Media Drive itself.

Photo Screen Icons

Albums Screen:

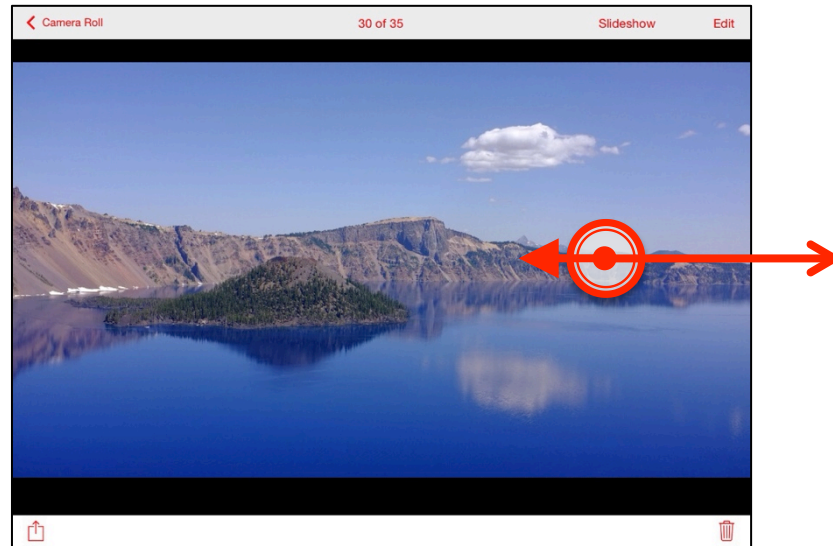


Photos Screen:



Viewing Photos

1. In the Navigation Bar on the Media Drive main screen, tap **Photos**.
2. On the Albums screen, navigate to the photo you want to view.
3. Tap a thumbnail to display a photo, then swipe forward or back to display the next or the previous photo:

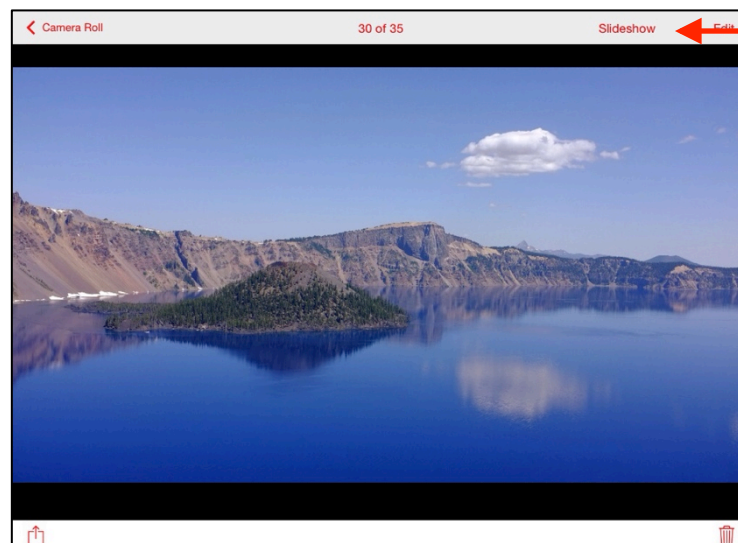


Playing Slideshows

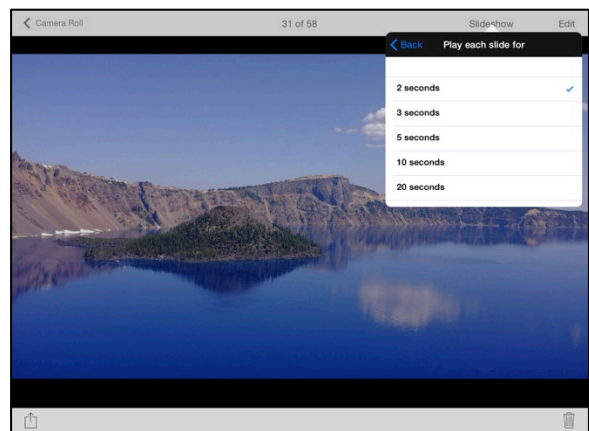
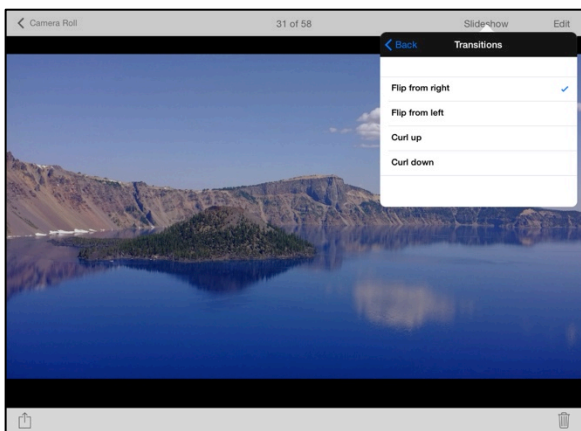
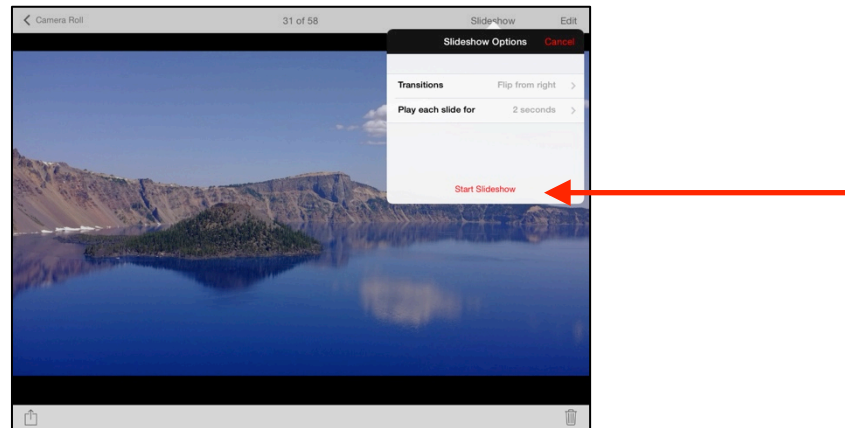
You can play a slideshow from any photo screen, whether you're displaying a single photo or a screen full of thumbnails.

To play a slideshow,

1. Open a photo or photo screen and tap **Slideshow**:



2. Tap the Slideshow options to select the transitions and timing for the slideshow, then tap **Start Slideshow**:



Editing Photos

You can use the photo controls to edit photos in these ways:

- Rotate a photo
- Enhance a photo
- Correct Red-eye
- Crop a photo

To display the photo controls,

- Open a photo and tap **Edit**:

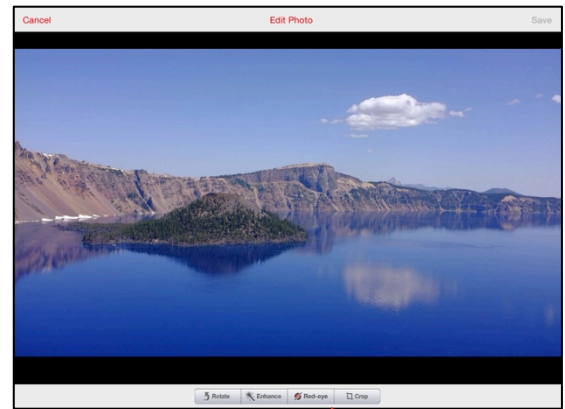
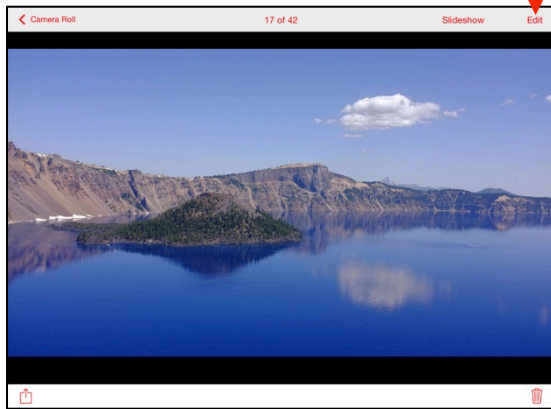
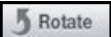



Photo editing controls

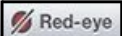
Rotating a Photo

- Tap the **Rotate** icon  until the photo is oriented the way you want it.

Enhancing a Photo

- Tap the **Enhance** icon  to sharpen the image and deepen the color.

Correcting Red-eye

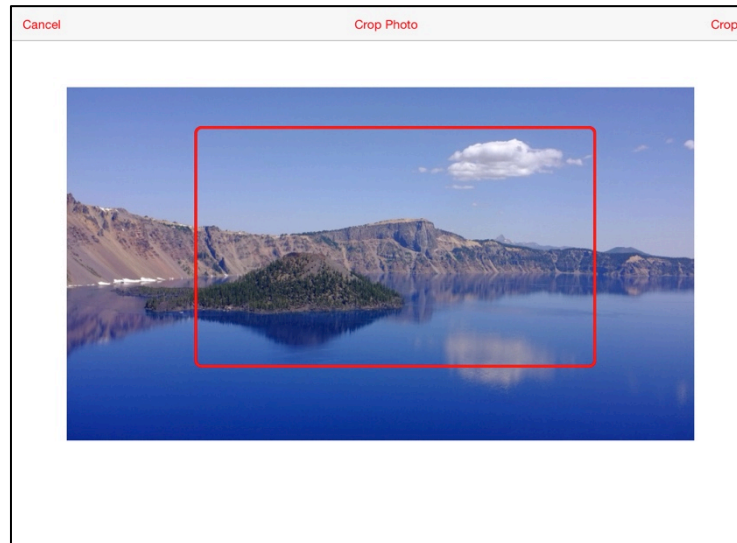
- Tap the **Red-eye** icon  to remove red-eye from images of people.

Cropping a Photo

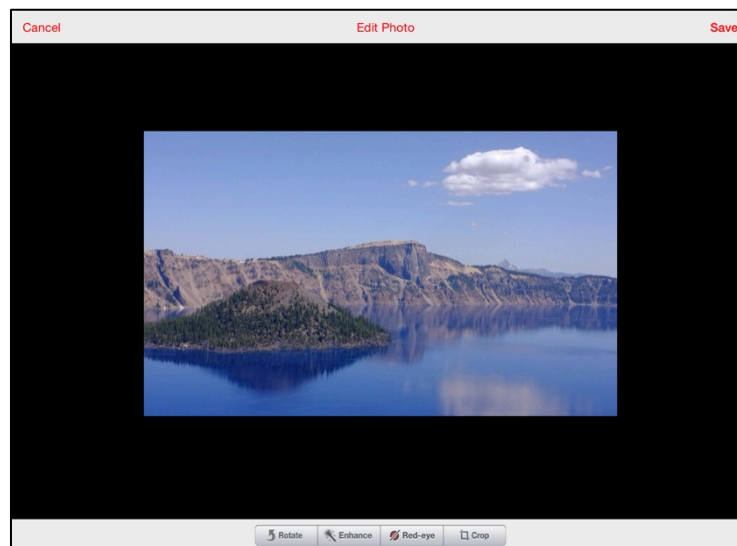
1. Tap the **Crop** icon .

A black box appears around the photo.

2. Use your fingertip to move and resize the crop box, which turns red as you move it, until it covers the desired area of the photo, then tap **Crop**:



3. Tap **Save** to save the cropped version of the photo:



Creating a New Album

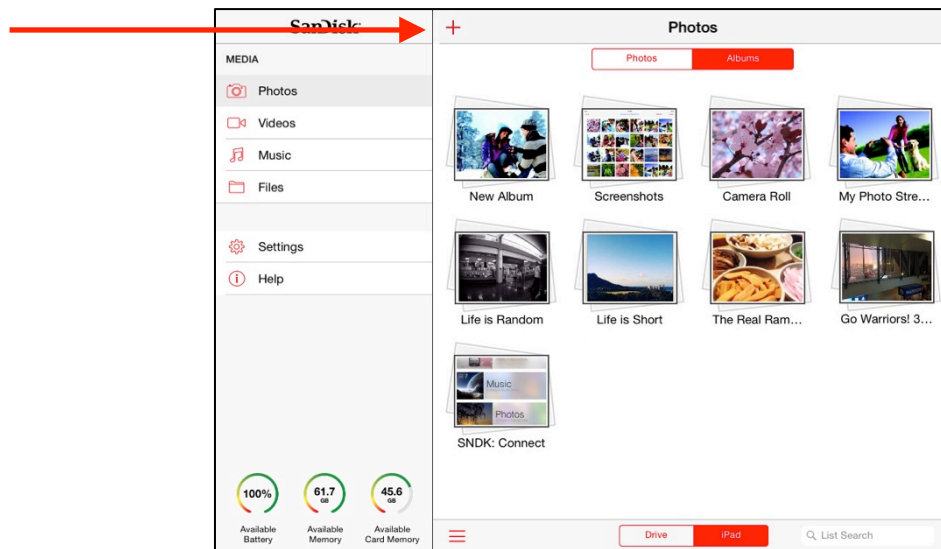
You can use the Media Drive app to create a new album on your mobile device, then populate it with photos stored on the Media Drive or on the mobile device itself.

Note: This feature is supported only on the iPad in Version 1.0 of the Wireless Media Drive app.

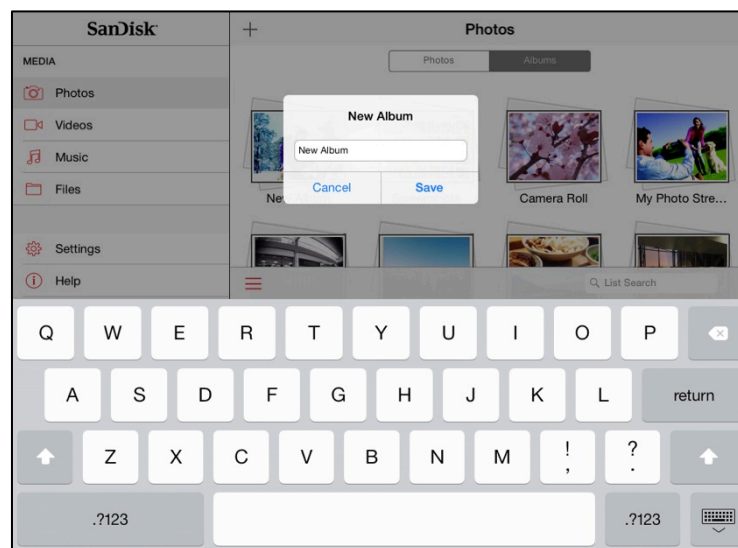
To do that, you must connect the Media Drive to your computer and create the new folder in the Drive window.

To create a new album on your mobile device,

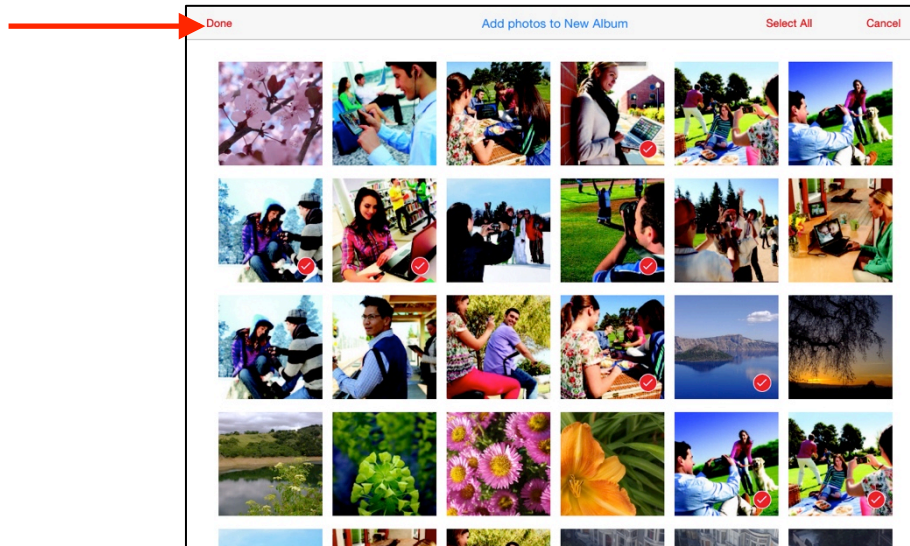
1. On the **Photos** main screen, select **iPad** (or **iPhone** or **iPod touch**) at the bottom of the screen, then tap the **+** icon:



2. Enter a name for the new album and tap **Save**:

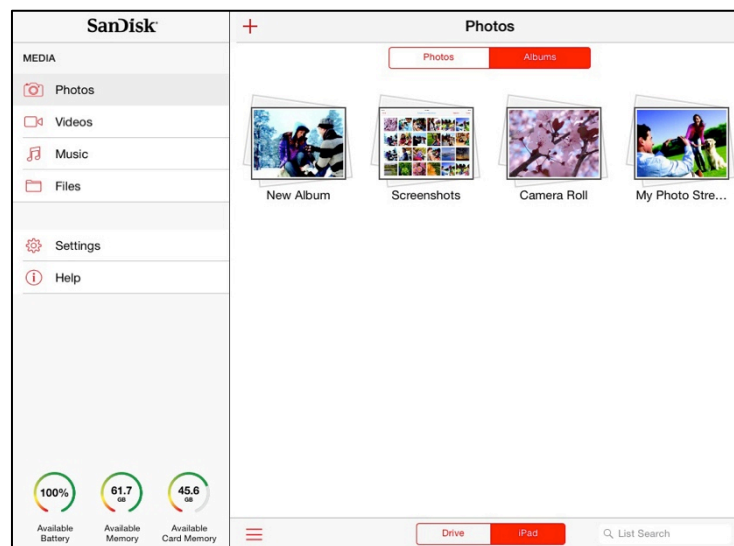


3. Tap the **Drive** or **iPad** (or **iPhone** or **iPod touch**) button at the bottom of the screen to navigate to the pictures you want to add to the new album, then tap photos to select them, and finally, tap **Done**:



A Progress window informs you when the new album has been created.

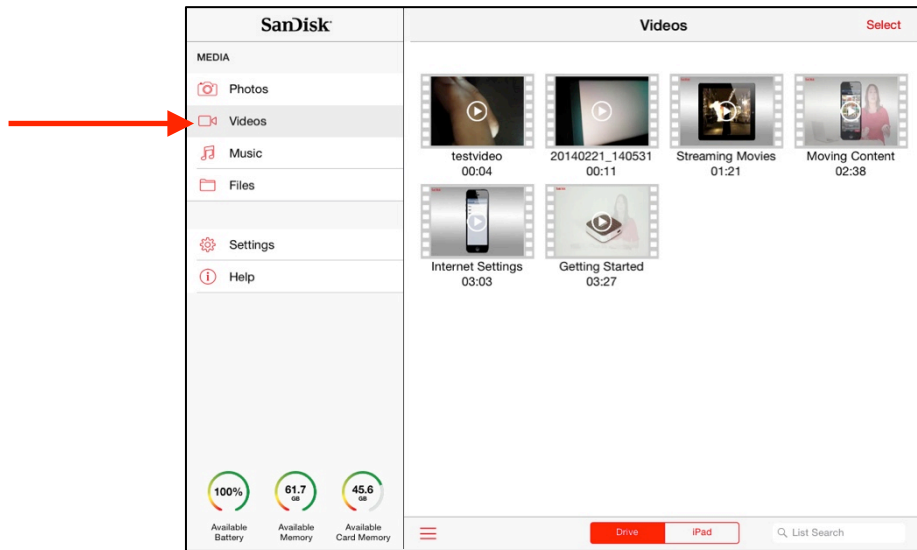
4. Tap **iPad** (or **iPhone** or **iPod touch**) at the bottom of the **Photos** screen to find the new album:



Streaming Videos

You can use the Media Drive app to stream videos stored on your mobile device as well as those stored on the Media Drive.

1. In the Navigation Bar on the Media Drive main screen, tap **Videos**:



2. Navigate to the video you want to stream and tap the thumbnail to start streaming it. Tap the video while it's playing to display the Play controls:

Progress Bar: Press and slide to move video forward or back



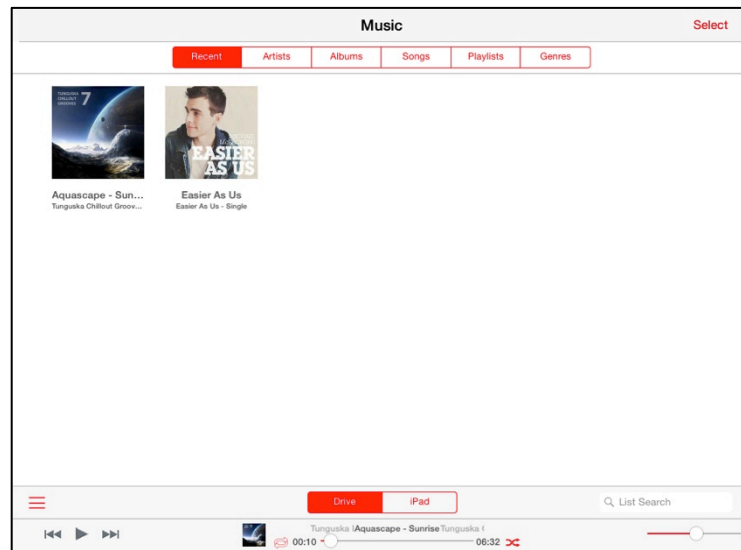
Playing Music

You can use the Media Drive app to play music stored on either your Media Drive or your mobile device. You can play music in the background while you're doing other things both inside the app and outside it on your mobile device.

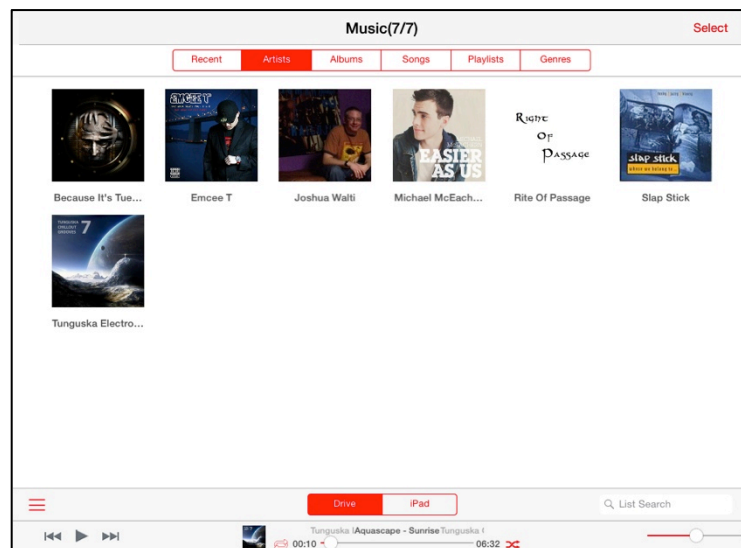
Sorting Music

The Music screen provides six ways to sort and view your music:

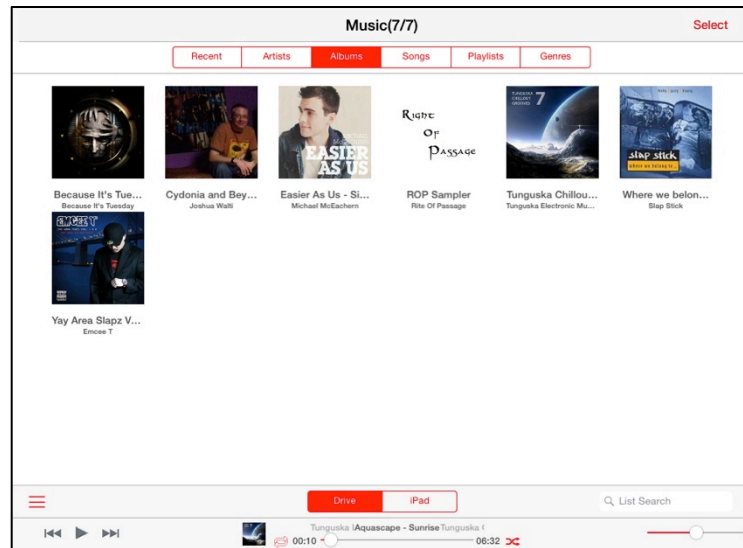
- By most recently played:



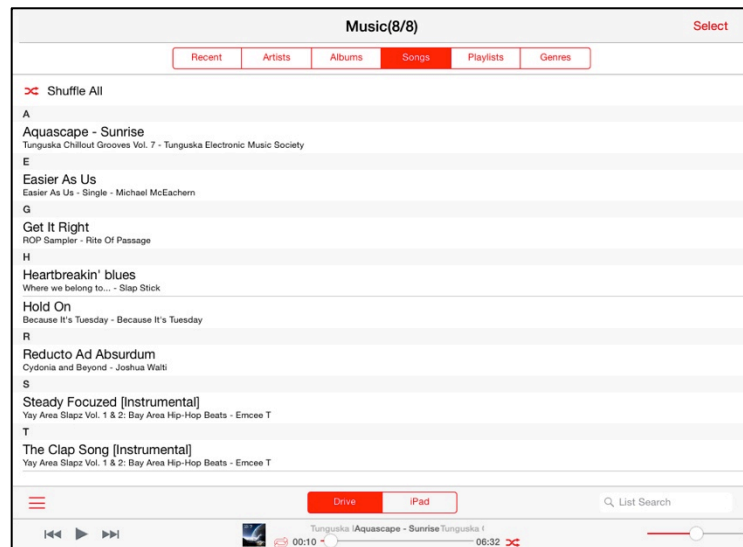
- By artist:



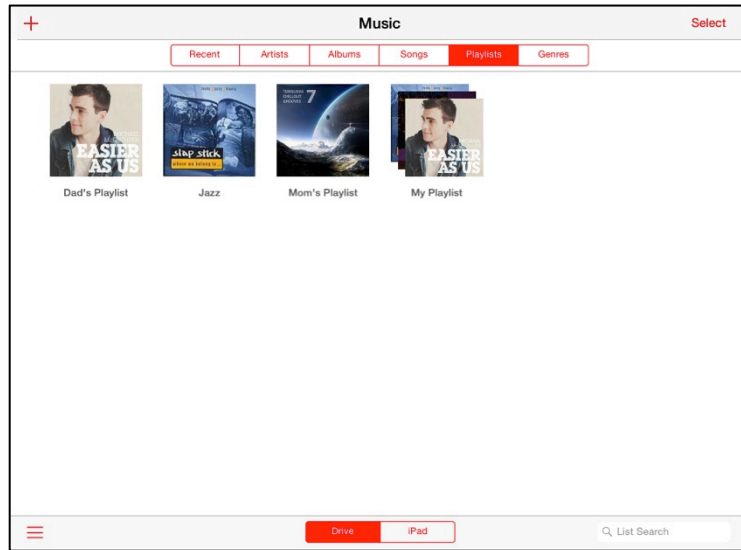
- By album:



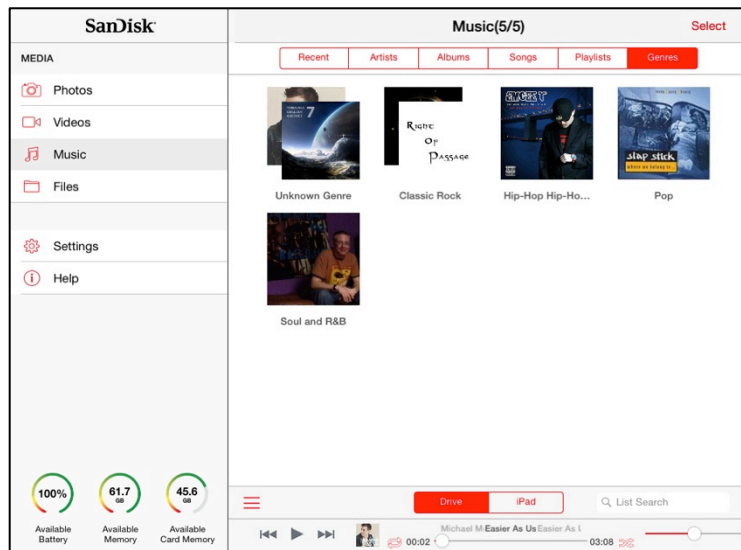
- By song:



- By playlist:



- By genre:



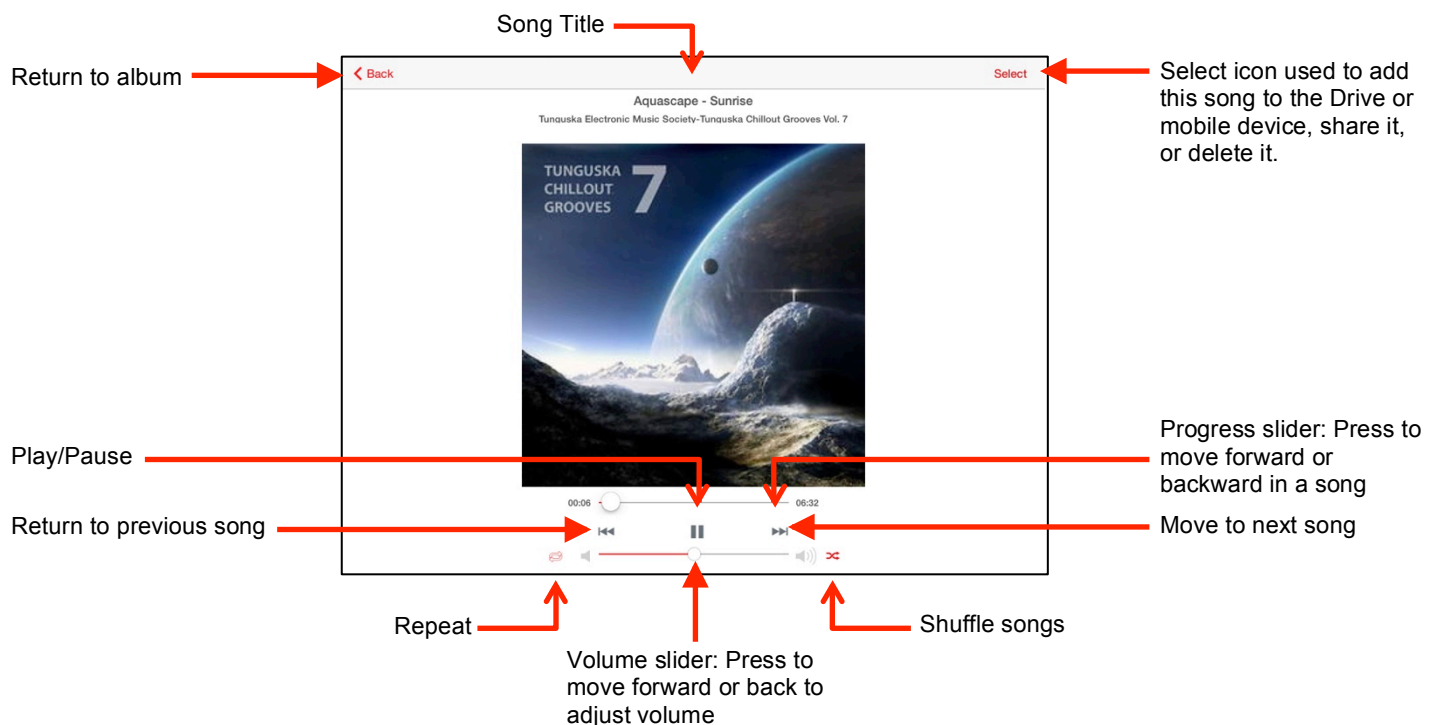
Playing a Song

The way you access the song you want to play depends on how you've sorted your music.

- If you've sorted by **Recent** or **Songs**, tap the song to go directly to the song Play screen:
- If you've sorted by **Album**, **Artist**, **Playlists**, or **Genres**, navigate to the Album containing the song you want to play and tap the song.

Using the Music Song Controls

The song Play controls are displayed across the bottom of a Now Playing screen:



Using Playlists

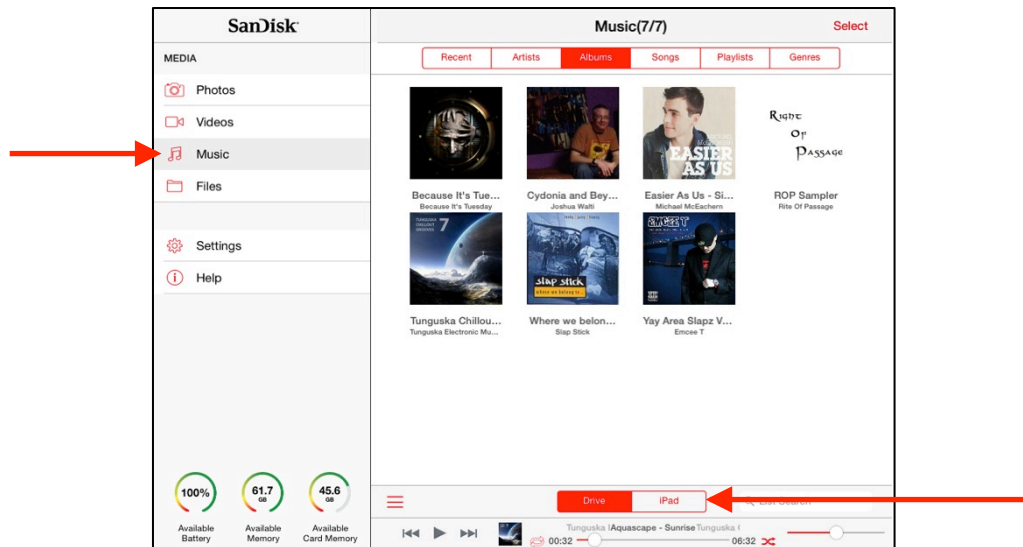
You can create playlists on both your Media Drive and your iPad (or iPhone or iPod touch). You can create as many playlists as you like to organize your music into easily-accessed lists. So on a road trip, each person in the car can stream his or her own music selections on a mobile device.

- To create a new playlist, use the Playlist view.
- To add music to an existing playlist, open the playlist itself.

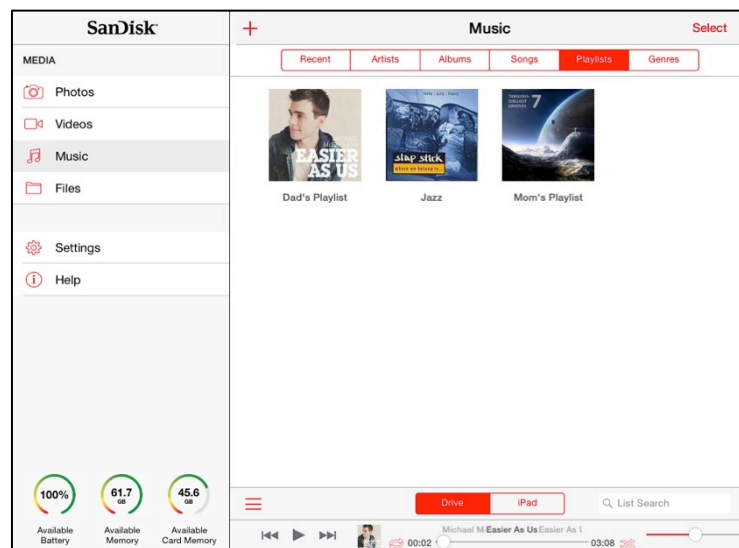
Creating a Playlist

To create a new playlist,

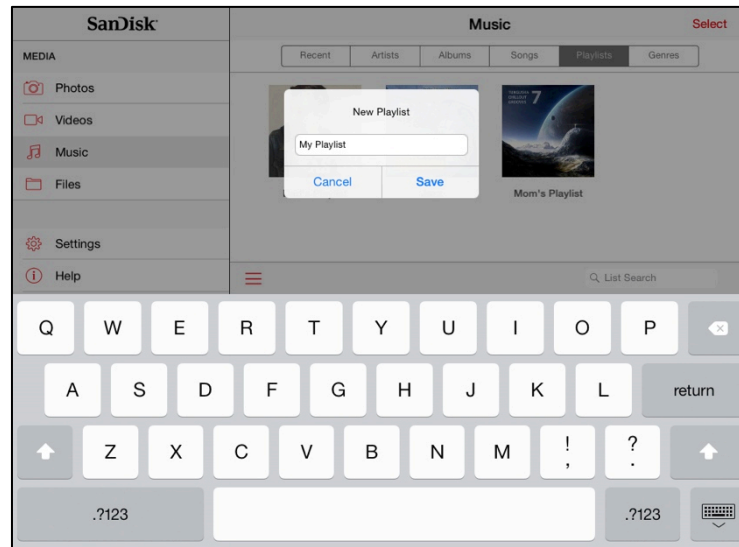
1. In the Navigation Bar, tap **Music**, then select **Drive** or **iPad** (or **iPhone** or **iPod touch**) at the bottom of the Music screen:



2. Tap **Playlist** in the **Music** screen view options, then tap the **+** icon. If you haven't created any playlists yet, the screen is blank:

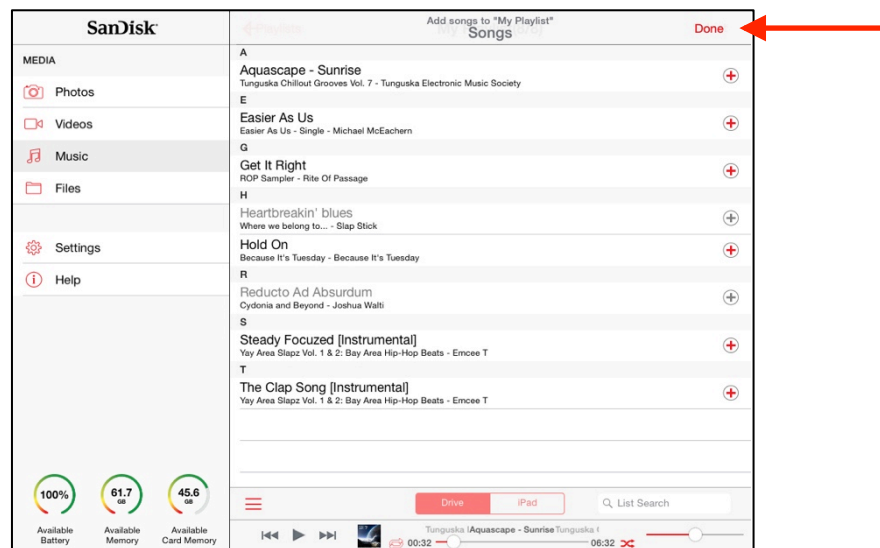


3. Enter a name for the playlist in the **New Playlist** window and tap **Save**:



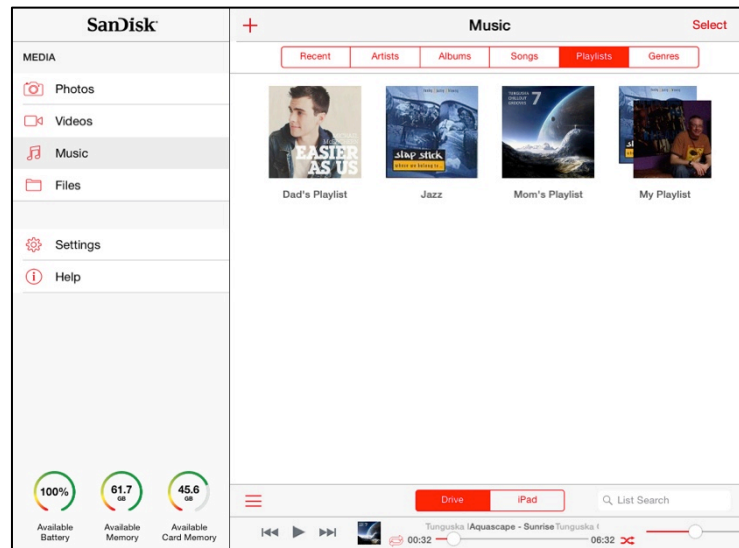
A list of all the music stored on the Media Drive or on your iPad (or iPhone or iPod touch), whichever you're creating the Playlist on, opens.

4. Scroll through the song list and tap the music to be added to this playlist (each tapped song grays out to show that it's been selected). Then tap **Done**:



5. Click **OK** in the Playlist Saved confirmation window.

The new playlist is displayed on the Playlists window:



Adding Songs to a Playlist

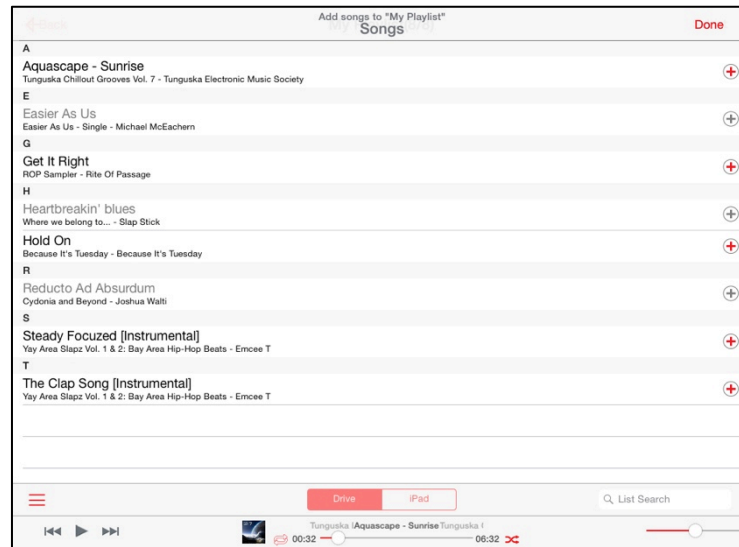
To add songs to a playlist,

1. Open the playlist you want to add to and tap **Add Songs** underneath the list of songs on the right side already in the playlist:



Your Song list opens.

2. Tap the songs to be added to the playlist, then tap **Done**:



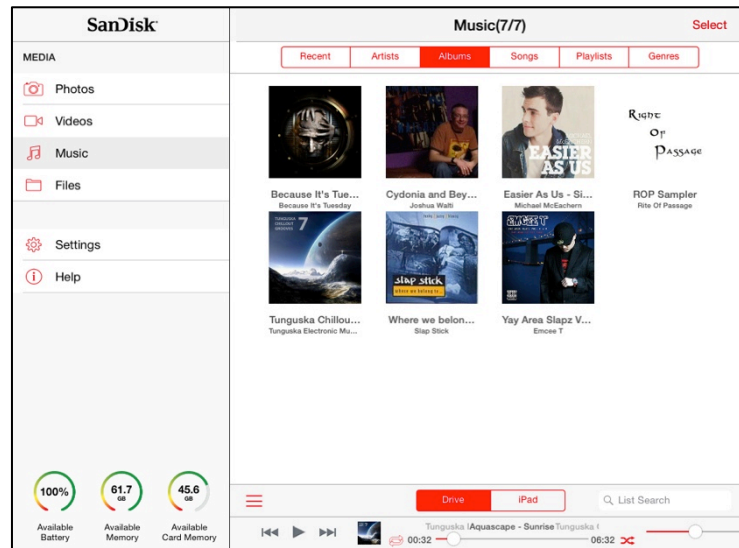
A notification window confirms that your list has been saved and displays the playlist with the newly-added songs

Controlling Music from Outside the Play Screen

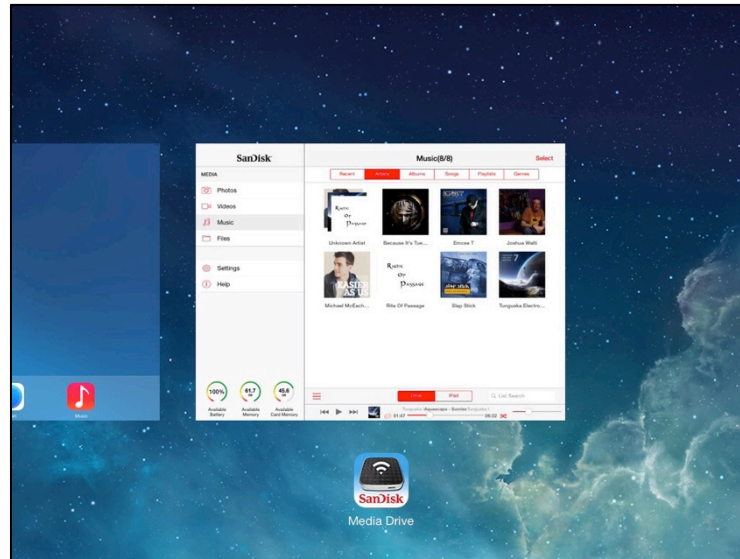
You can play music in the background while you use other Media Drive app features or exit the app to use your mobile device. You always have access to the currently playing song whether you're still inside the Media Drive app or outside it on your mobile device.

1. Start the music playing.
2. Leave the music Play screen.

- If you stay in the Music directory, the music controls remain accessible at the bottom of the screen:



- If you exit the Media Drive app and use your mobile device for other purposes while the music plays in the background, double-tap the Home button, then tap the Media Drive icon to return to the Now Playing screen in the app:



Managing the Files Folder

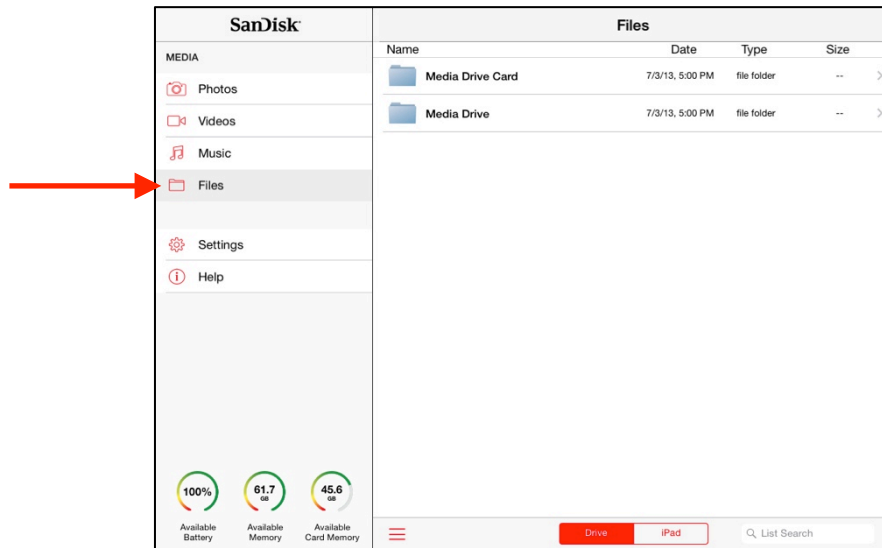
The Media Drive Files folder provides access to all the content stored on your Media Drive and on a memory card if one is inserted in the Drive.

On the **Files** app screen, you can perform actions not available on other app screens:

- See all your media content in one central location
- Sort the contents of the Media Drive or an inserted memory card
- Delete folders stored on your Media Drive or on an inserted memory card
- Open documents

To access the contents of the Files folder,

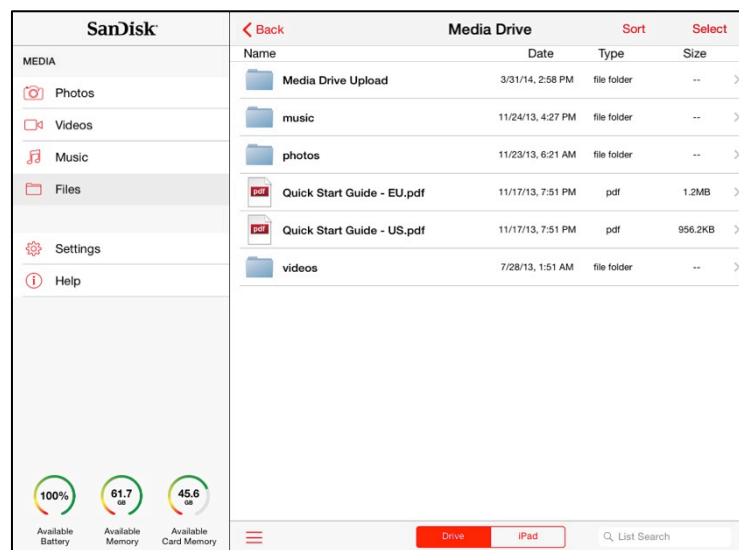
1. In the Navigation Bar, tap **Files** to display the Files main screen:



The **Files** screen provides access to all files stored on the Media Drive and all files stored on a memory card if one is inserted in the Drive.

Note: If no memory card is currently inserted in the Media Drive, only the **Media Drive** folder is displayed.

2. Tap **Media Drive** or **Media Drive Card** to access the desired files, In this example, the **Media Drive** folder has been selected:

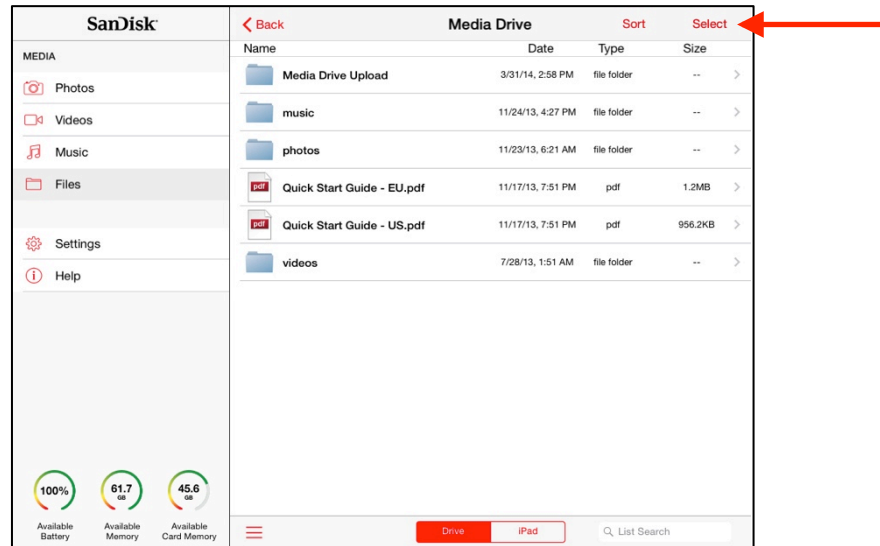


You now have access to all the music, videos, photos, and documents stored on your Media Drive.

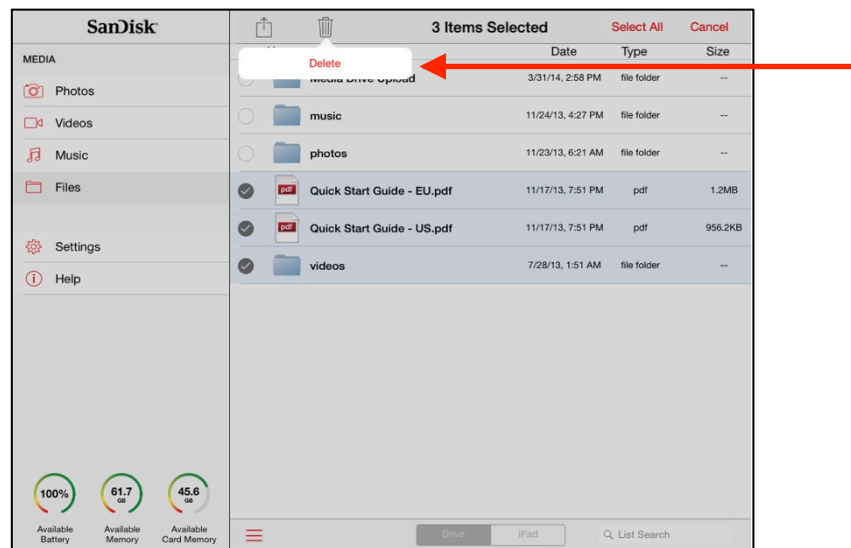
Deleting Folders

The **Files** screen is the only screen in the Media Drive app from which you can delete folders.

1. Navigate to the **Files** screen displaying the folders to be deleted and tap **Select**:



2. Tap the folders to be deleted, tap **Trash** icon  at the top of the screen, and tap the delete button:



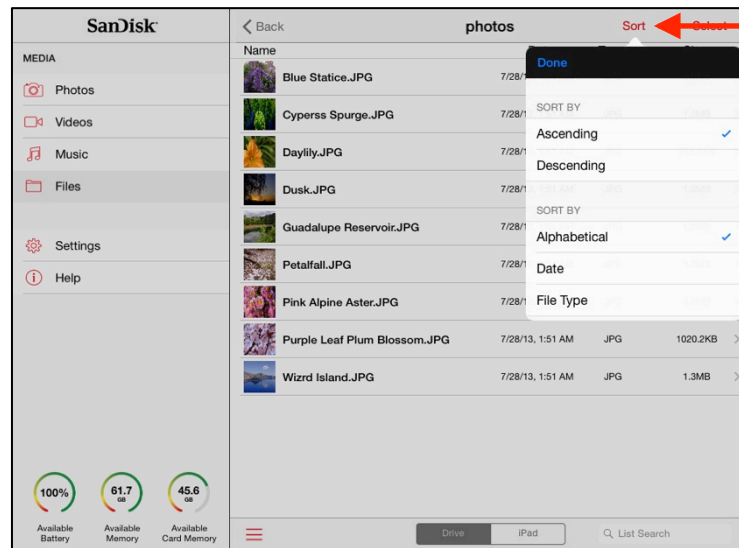
3. Confirm that you want to delete the folders.

Sorting Files

You can sort the files and folders displayed on any **Files** screen.

To access the Sort options,

1. On any Files screen, tap **Sort** to display the **Sort by** options:

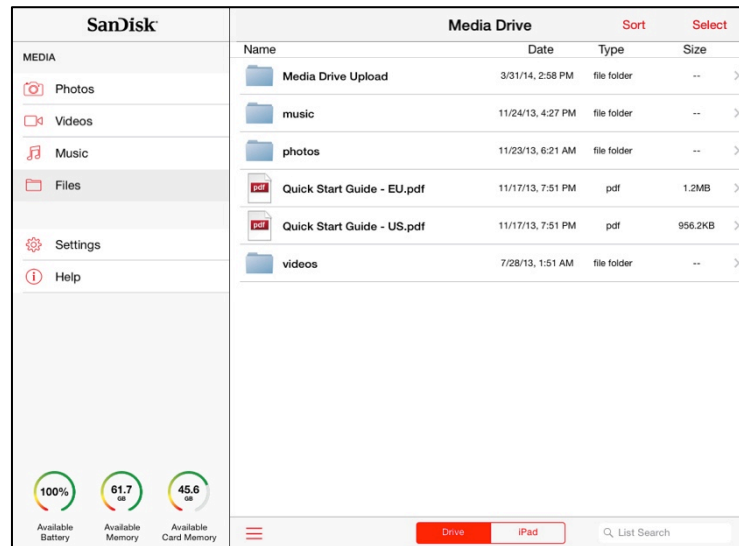


2. Select sort options for the content displayed on this screen, then click **Done**.

Opening Documents

You can use the Media Drive app to view documents stored on the Drive. The Media Drive app displays links to other apps on your mobile device that can open the document you want to view.

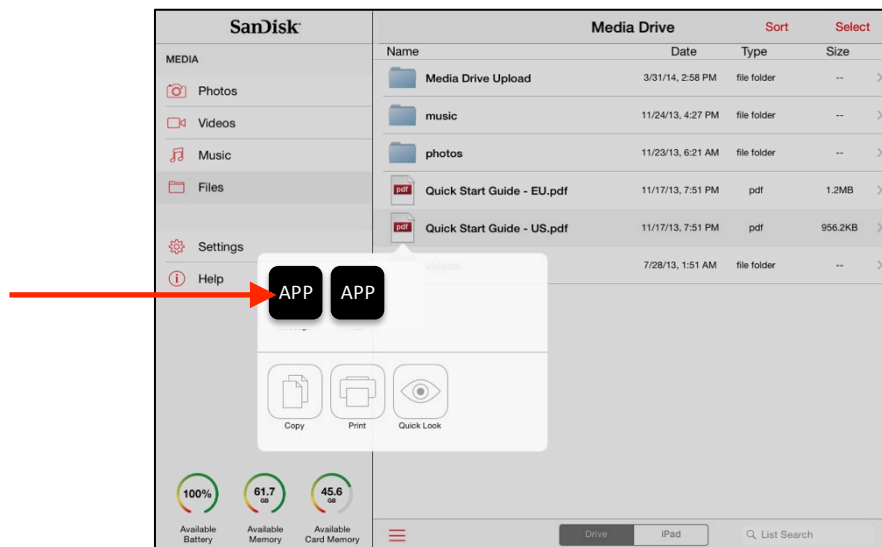
1. Navigate to the document you want to view and tap it:



The icons for all the apps on your mobile device that can open the selected document are displayed. The apps you see in this window vary depending on which apps you've installed on your mobile device.

Note: The one icon all iOS users will always see is **Quick Look**, a program that comes already installed on devices and can open most file types.

2. Tap the icon for the program you want to use to open the document:



2. The document is opened in the selected app:



4. To return to the Media Drive app, tap **Done**.

Using a Memory Card

You can use a memory card to upload content to your Media Drive from another device (for example, a camera) or download content from your Media Drive to the memory card to move the content to another device.

The Media Drive supports SD™, SDHC™, and SDXC™ cards.


- Insert a memory card in the face-up position pointing toward the card slot.

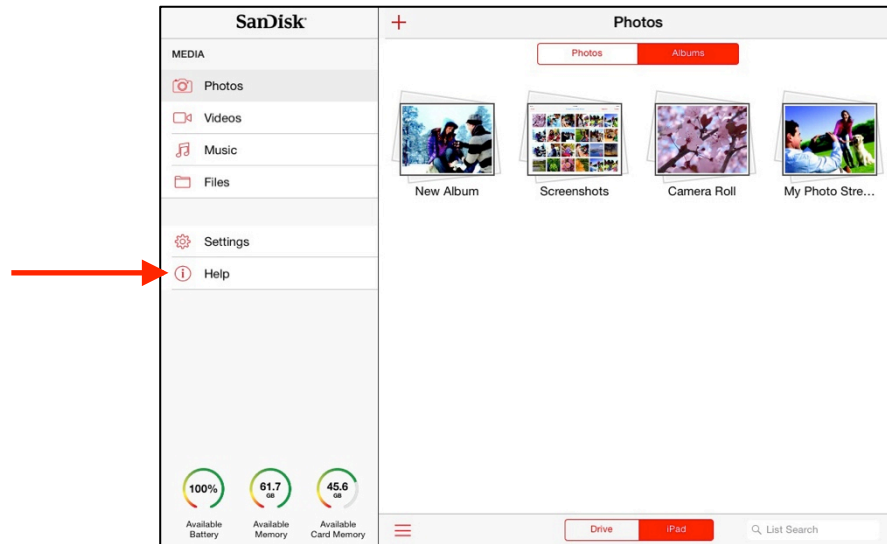


Note: The card slides in easily when it's in the correct position, so if you feel resistance, don't force it. Make sure it's in the correctly lined up and try again.

- To remove the card, use your fingernail to push the card in and release it. It will pop out of the slot.

Getting Help

1. In the middle of the Navigation Bar, underneath Settings, tap the Help icon .
2. Tap **Getting Started Guide** to open the *Media Drive Quick Start Guide* on your mobile device or **Online Support** to connect to a support tech.

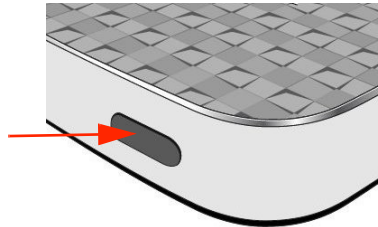


4. Managing the Media Drive

Using the Power Button

Power Button

- Turns the Drive on and off
- Resets the Admin and Wi-Fi password
- Forces a hard restart to reboot an unresponsive Drive



The power button performs three functions, depending on how long you hold in the button.

Table 3: Using the Power Button

On/Off	Reset	Hard Restart
Press and hold for 3 seconds to turn the Drive on and off.	Press and hold for 10 seconds to reset Admin and Wi-Fi passwords to their defaults: <ul style="list-style-type: none"> • Admin default = “admin” • Security default = no password 	Press and hold for 25 seconds to force a frozen Drive to restart.

Note: Resetting the Media Drive or forcing a hard start does NOT delete any content from the Drive.

Managing Auto-shutdown

When the Media Drive is not connected to a power source, it automatically shuts down after it's been idle for 10 minutes. When you turn the Drive back on, it searches for the strongest available Wi-Fi signal and connects to that network.

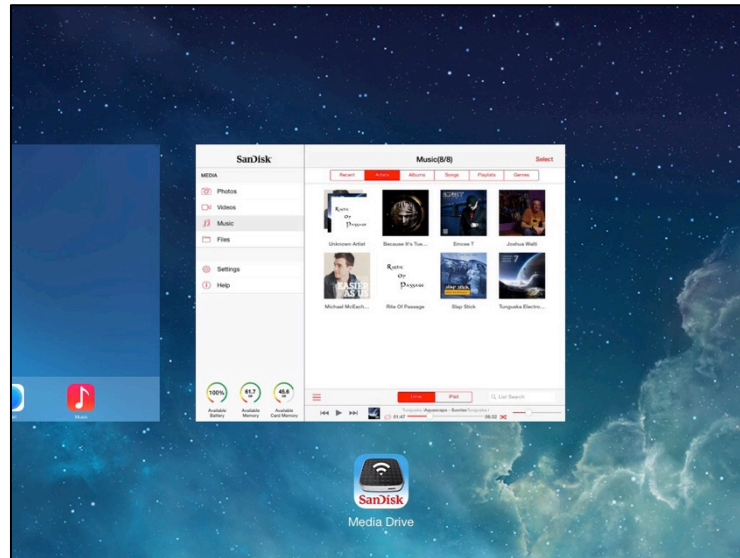
If the strongest Wi-Fi signal belongs to the Media Drive, there's no need to do anything further. But if it's found another, stronger available Wi-Fi signal, you must reconnect to the Drive.

1. Press the Media Drive power button for 3 seconds to restart it.
2. Go to Settings > Wi-Fi In your mobile device and select your Media Drive from the list of available Wi-Fi networks.

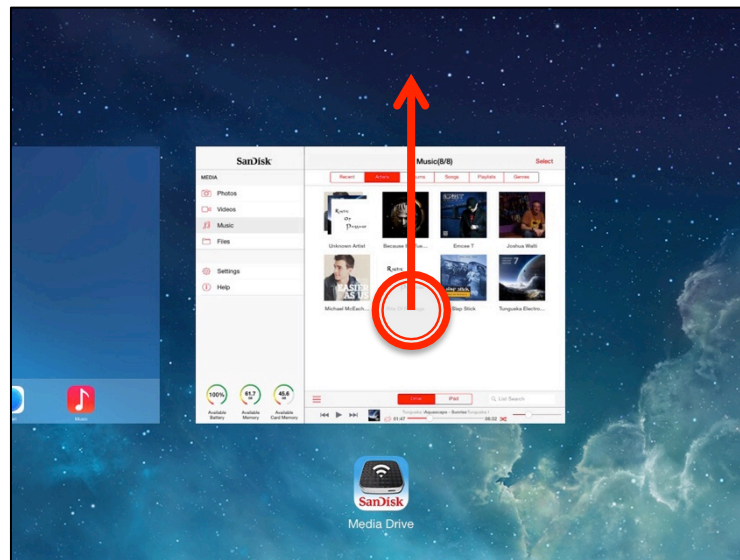
Restarting the App

If your Media Drive becomes unresponsive, you can force it to restart.

1. Double-press the Home button to display your open apps in the dock across the bottom of the screen:




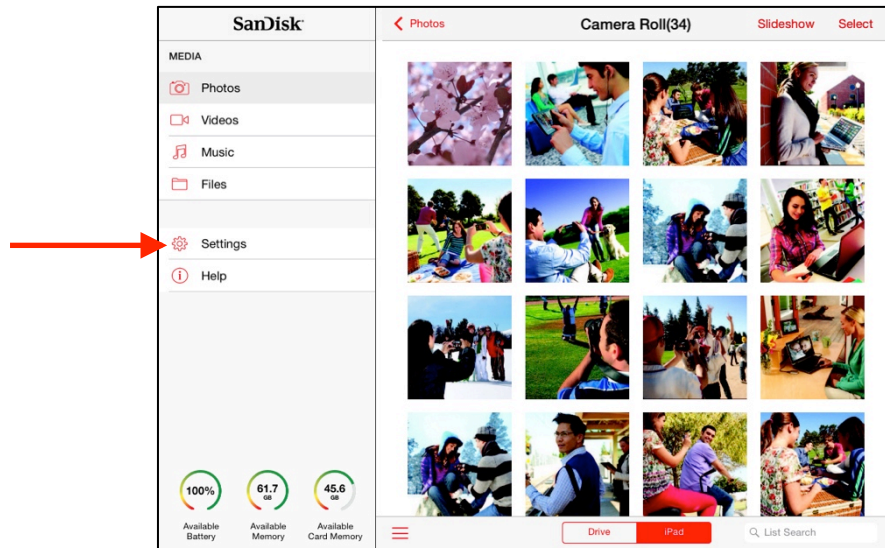
2. Tap on the representative Media Drive home screen and slide upwards.



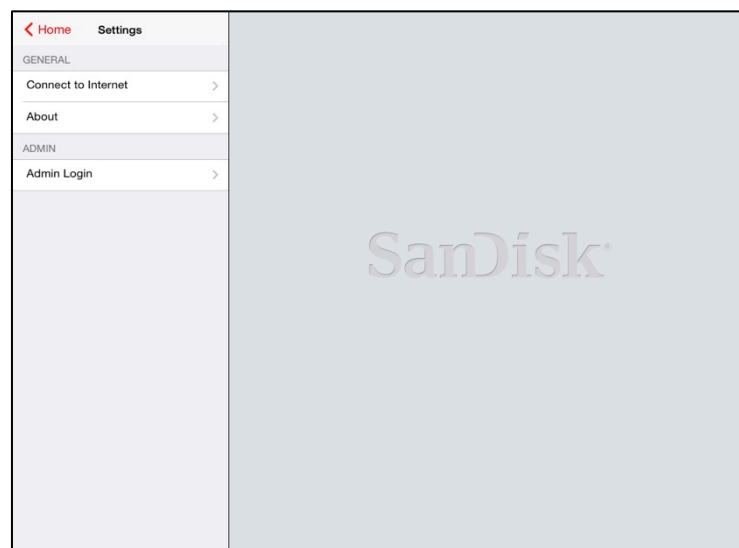
3. Tap the minus sign on the Media Drive icon to close the app.
4. Double-press the Home button again to close the open app icons.
5. Tap the Media Drive icon on your iPad (or iPhone or iPod touch) home screen to re-open the app.

Media Drive Settings Overview

At the bottom of the Navigation Bar, tap the Settings icon  to open Media Drive settings:



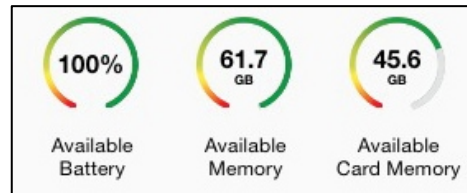
The **Settings** screen is divided into **General** and **Admin** settings:



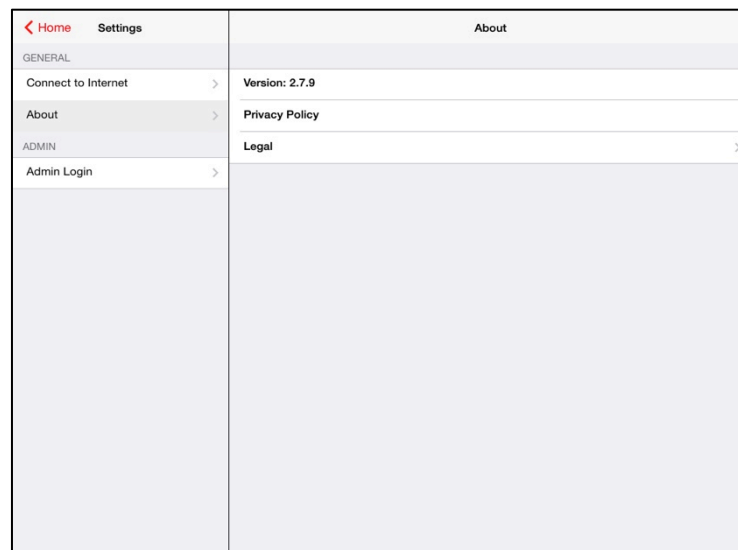
General Settings

General Settings can be accessed without logging in as an Admin. They provide basic information about your Media Drive:

- **Battery Level:** Displays the strength of the charge remaining in your Media Drive battery.
- **Status Gauges:** Media Drive status gauges are located at the bottom of the navigation bar providing easy access to information about your drive including available battery, internal memory and SD card memory.



- **About:** Provides access to the SanDisk Privacy Policy and displays the version number of the Media Drive application software currently installed on your mobile device:



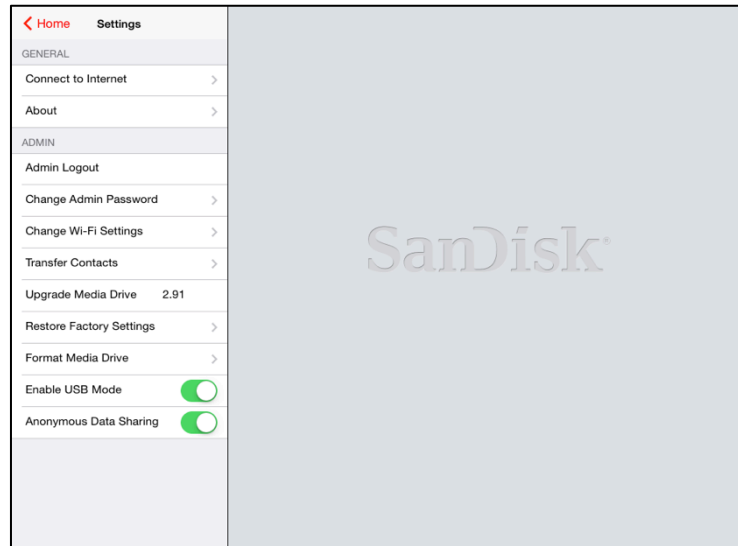
Admin Settings

You must be logged on as an Admin to access Admin Settings. You use them to

- Control Admin login, security, Wi-Fi, and USB settings
- Connect to the Internet
- Upgrade the Drive Firmware
- Reformat the Drive

Using Admin Settings

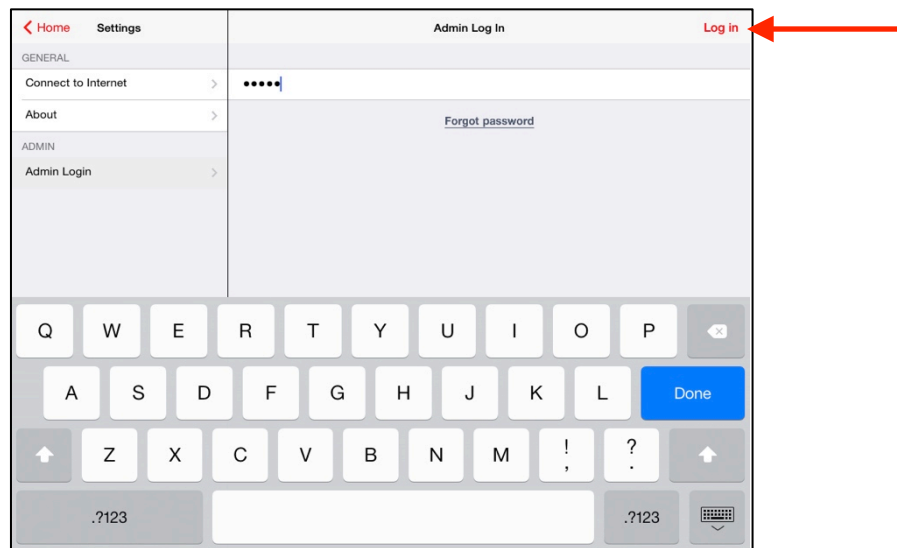
After you log in as an Admin, the Settings screen provides access to all the functions you can perform in the Media Drive app:



Admin Login/Logout

To log into Admin settings,

1. In **Admin Settings**, tap **Admin Login**.
2. On the **Admin Password** screen, enter the default password “admin” and tap **Log in**:

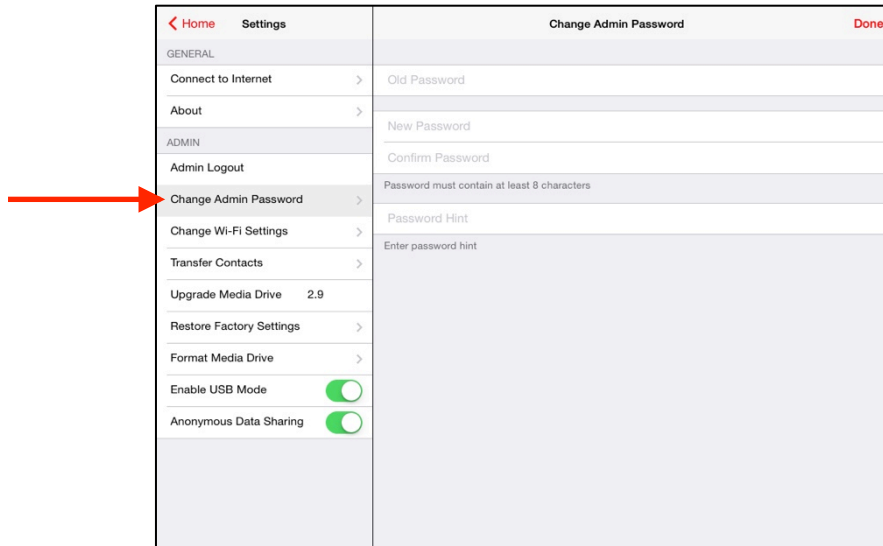


3. When you're ready to log out, return to Admin Settings and tap **Admin Logout**.

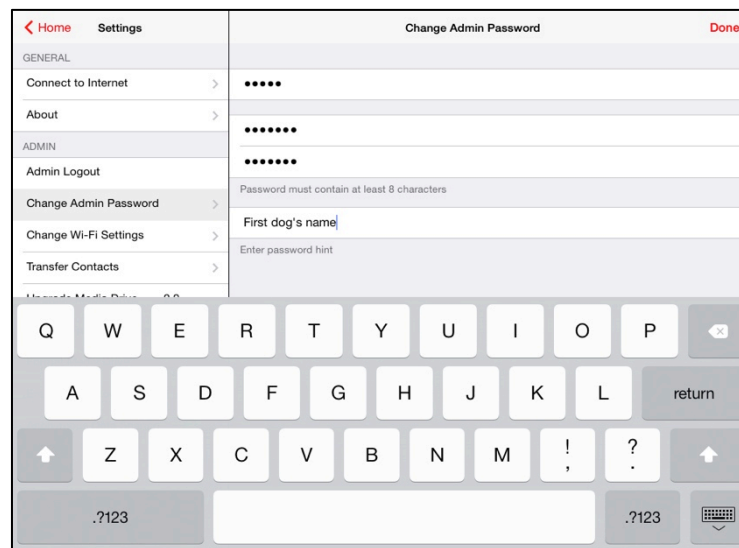
Change Admin Password

To change the Admin password,

1. In **Admin Settings**, tap **Change Admin Password**:



2. Follow the directions in the **Change Admin Password** window to enter the old password, enter and confirm a new one, and create a password hint question and answer:

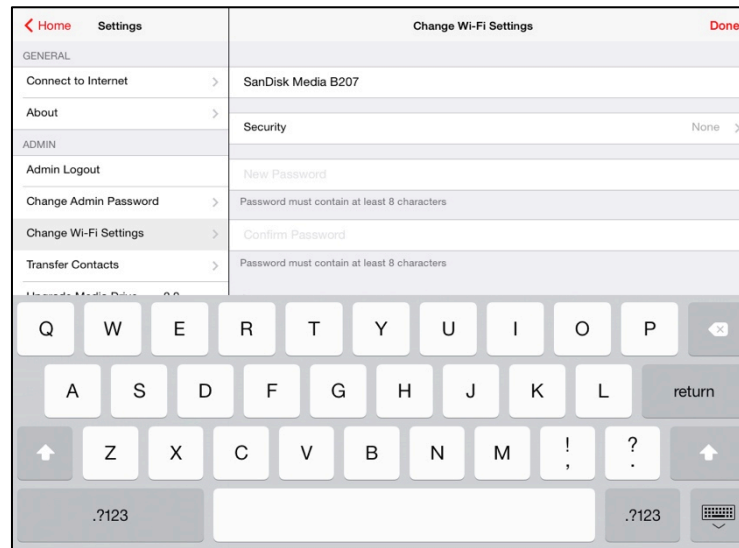


3. Tap **Done**.

Wi-Fi Settings

Use **Wi-Fi Settings** to change the name of your Media Drive Wi-Fi network and to set or change a Wi-Fi security password.

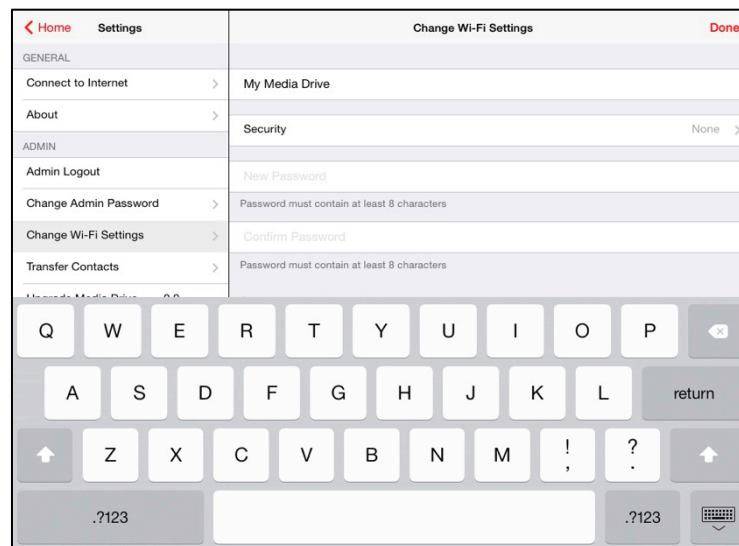
- In **Admin Settings**, tap **Change Wi-Fi Settings** to open the **Change Wi-Fi** window:



Change Wi-Fi Name

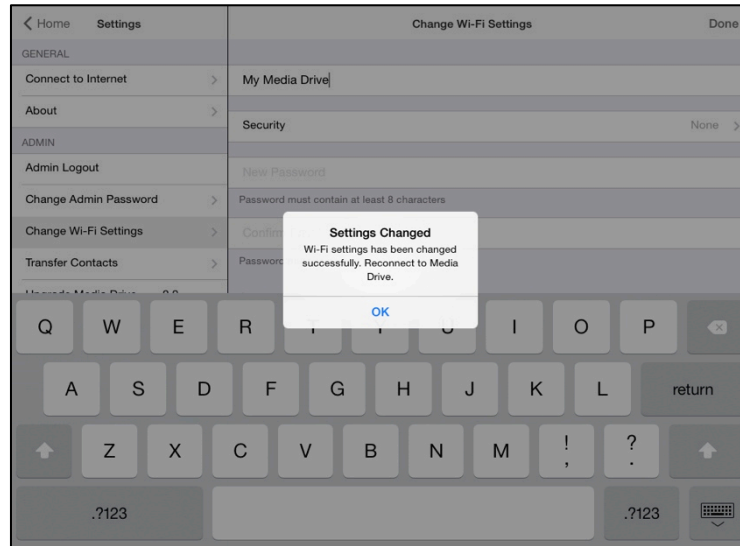
You can change the name of your Media Drive Wi-Fi network to make it easier to find in a list of available networks or when you want to share your files with friends.

1. In the **Change Wi-Fi** window, tap the current Wi-Fi name to display the keyboard, replace the current Wi-Fi name with a new one, and tap **Done**:

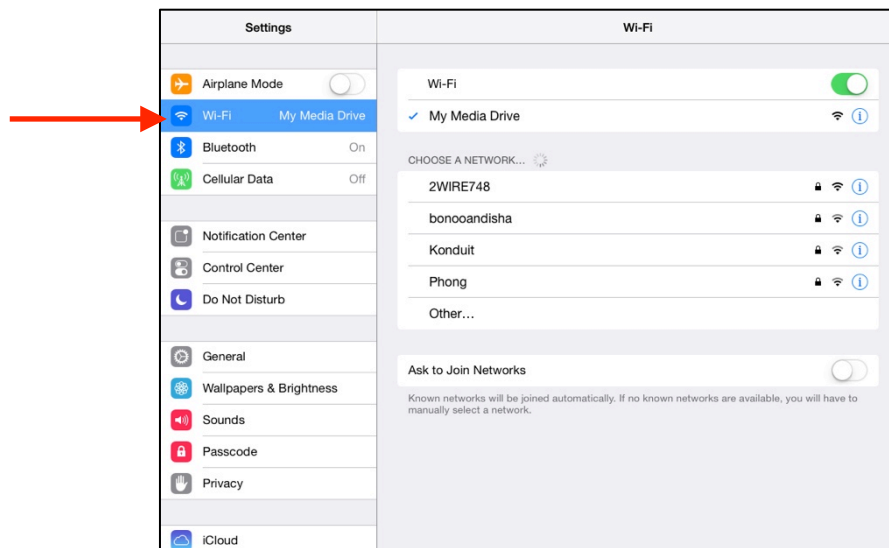


The Media Drive reboots. A **Setting Changed** message confirms that your name change has been saved and indicates that once the Media Drive has restarted, you must reconnect to it under its new name.

2. Click **OK**:



3. On your iPad (or iPhone or iPod touch), go to Settings > Wi-Fi, tap the new name of your Media Drive Wi-Fi in the list of available networks, and connect to it:

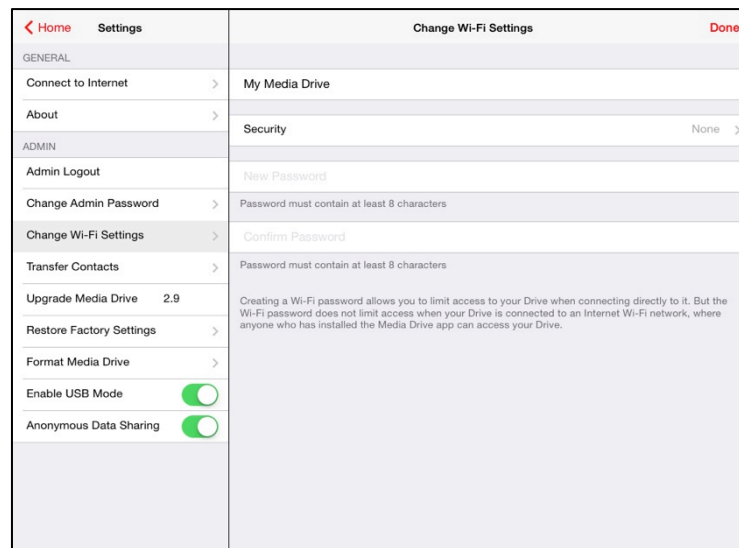


4. Stop and then restart the Media Drive app.

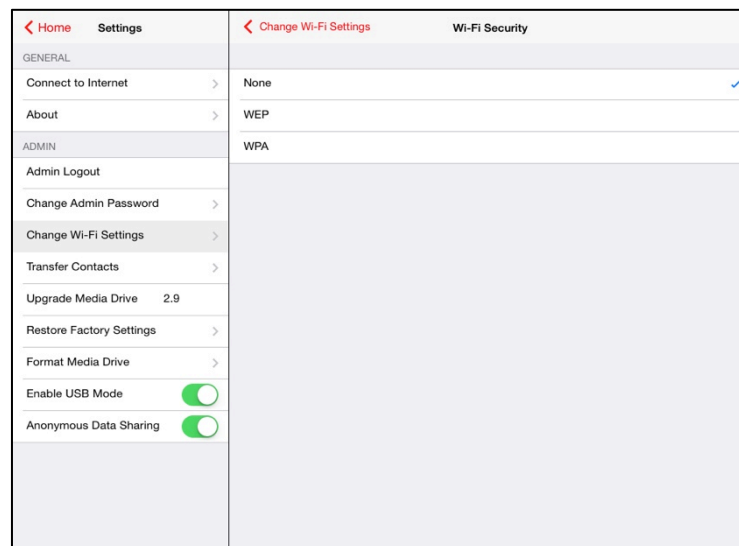
Set/Change a Wi-Fi Security Password

The default Wi-Fi security setting is no password. We recommend that you set a Wi-Fi password so that your Drive contents can't be accessed by strangers in areas where the Drive might automatically connect to an available Wi-Fi network.

1. On the **Change Wi-Fi** screen, tap **Security**:



2. In the **Wi-Fi Security** window, tap **WEP** or **WAP**, follow the on-screen directions to enter and confirm a security password, and tap **OK**:



3. In the **Setting Changed** message, click **OK**
4. On your iPad (or iPhone or iPod touch), go to Settings > Wi-Fi and reconnect to the Media Drive Wi-Fi.

5. Stop and then restart the Media Drive app.

Note: Creating a Wi-Fi password allows you to limit access to your Drive when connecting directly to it. But the Wi-Fi password does not limit access when your Drive is connected to an Internet Wi-Fi network, where anyone who has installed the Media Drive app can access your Drive.

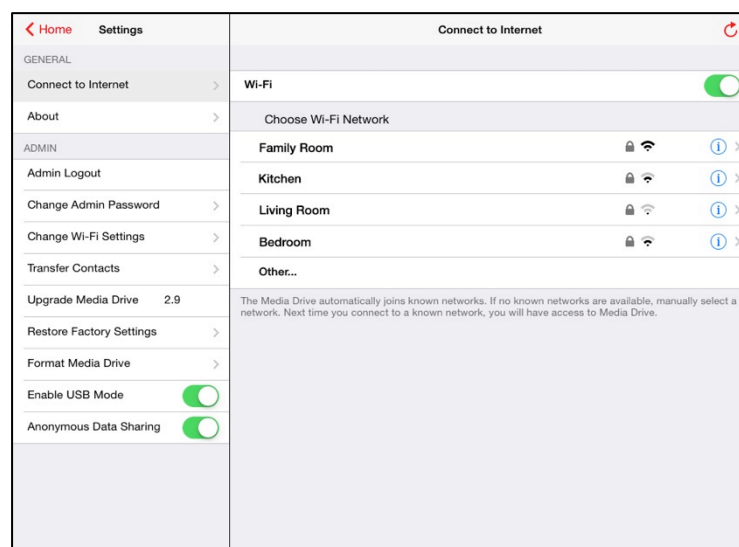
Connect to/Disconnect from the Internet

The Media Drive app allows you to access your files and browse the Internet at the same time. The Drive automatically joins known networks. If no known networks are available, you manually select one from a list of available networks. The next time you connect to a known network, you will have access to your Media Drive.

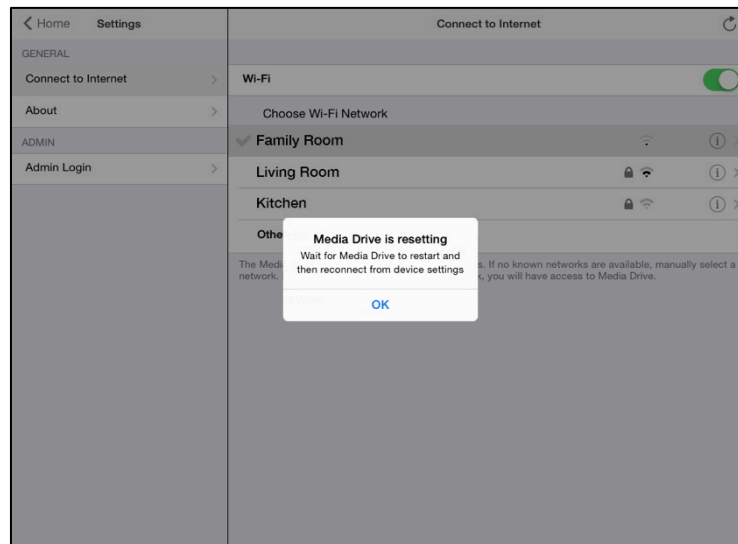
Note: Some wireless networks might block this functionality.

Connecting

1. In **Admin Settings**, tap **Connect to Internet**.
2. In the **Connect to Internet** window, turn on **Wi-Fi**, then tap a Wi-Fi network under **Choose Wi-Fi Network**:



A message informs you that the Media Drive is resetting and instructs you to reconnect to the Media Drive after the Drive has reset:

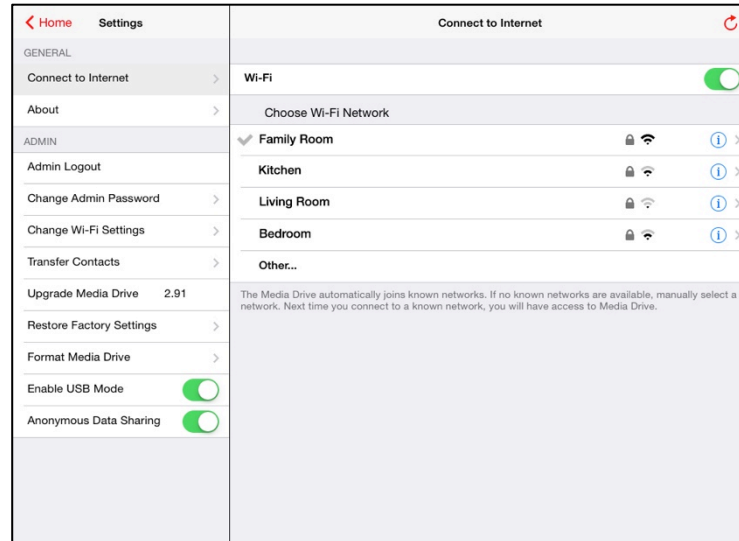


3. Click **OK**.

When the Drive restarts, the Wi-Fi LED on the front of the Drive shines green to indicate that your mobile device is now connected to the Internet.

4. On your mobile device, go to Settings > Wi-Fi and reconnect to the Media Drive Wi-Fi network.
5. Stop and then restart the Media Drive app.

6. In Admin settings, the **Connect to Internet** screen now displays the Wi-Fi network that is connecting your mobile device to the Internet even while you are connected to and are using your Media Drive:



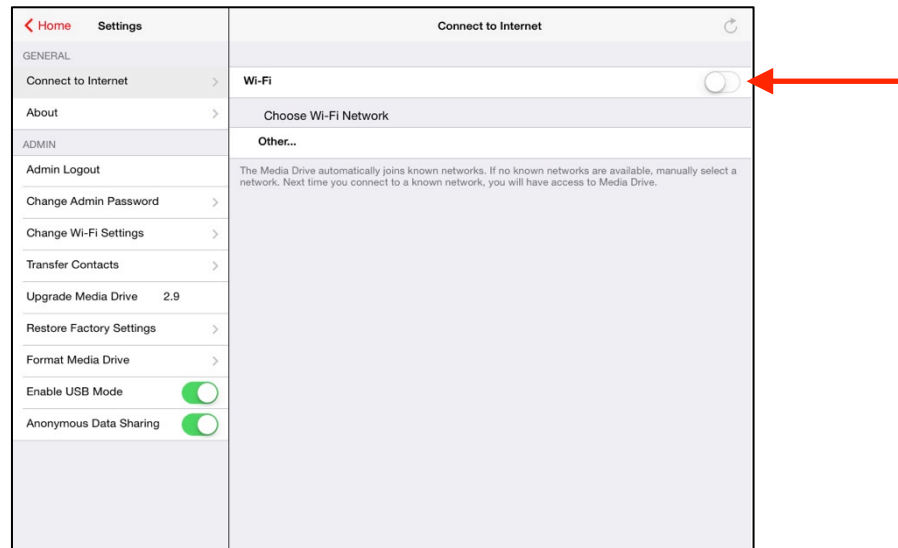
You're now connected to both the Media Drive and the Internet. Whenever your mobile device connects to this Internet network and you launch the Media Drive app, the mobile device will automatically find the Drive.

Note: Some firewalls may prevent you from connecting to the Internet and the Drive at the same time.

Disconnecting

1. In **Admin Settings**, tap **Connect to Internet**.

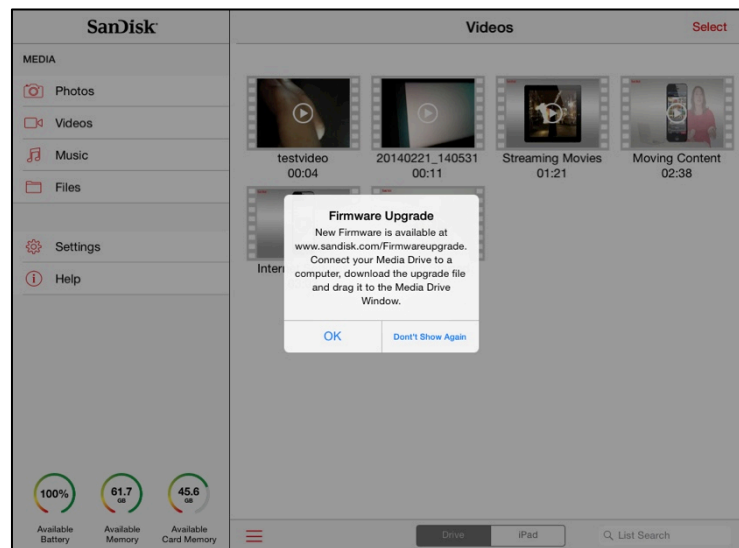
2. In the **Connect to Internet** window, turn Wi-Fi off:



Upgrade Media Drive

When the Media Drive app detects that your Media Drive is not running the latest Firmware, it displays a **Firmware Upgrade** notice in the app informing you that a later version of the Firmware is available.

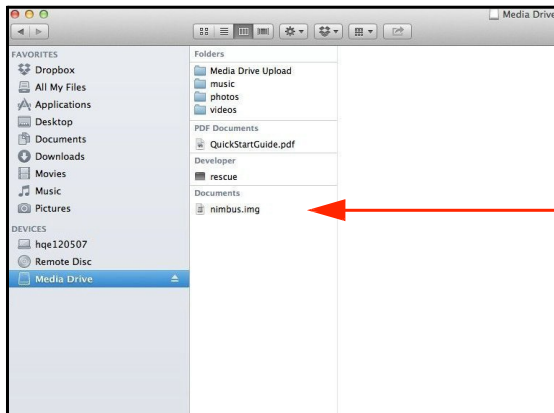
You can also trigger this notice by tapping **Upgrade Media Drive** in Settings:



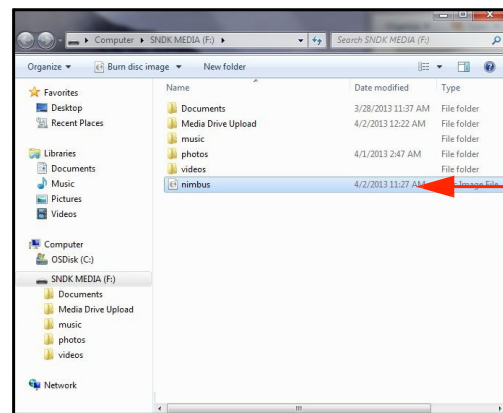
1. Click **OK** and close the Media Drive app.
2. Connect your Media Drive to your computer via a USB port and open the Media Drive window.

3. Go to www.sandisk.com/support and download the Media Drive Firmware upgrade file to your computer.
4. Drag the Firmware file into the main Media Drive window, which contains the photos, videos, music, and documents you've loaded on the Media Drive:

On a Mac:



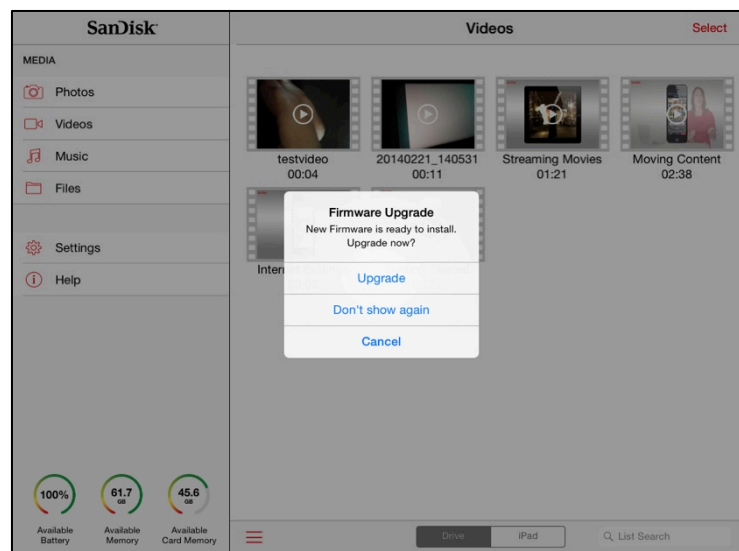
On a PC:



Note: Once you've completed the Firmware upgrade, the Media Drive app deletes the Upgrade file from the Drive.

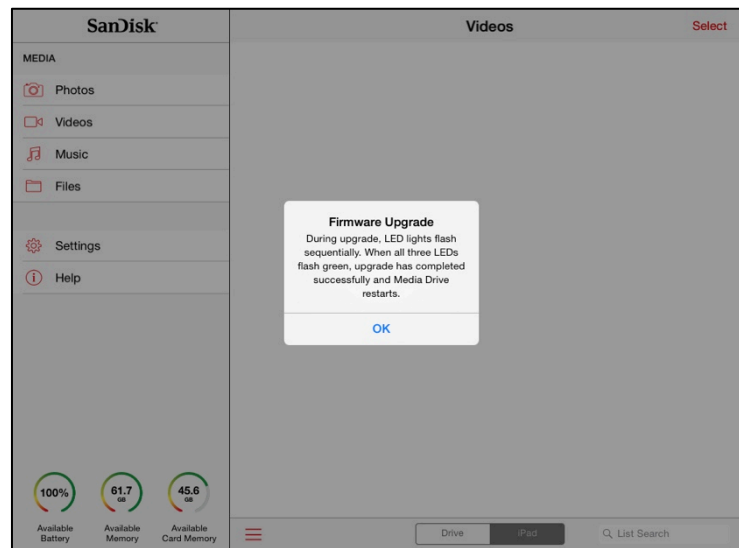
5. Disconnect the Media Drive from the computer and launch the Media Drive app.

A **Firmware Upgrade** notice asks to upgrade the Firmware:



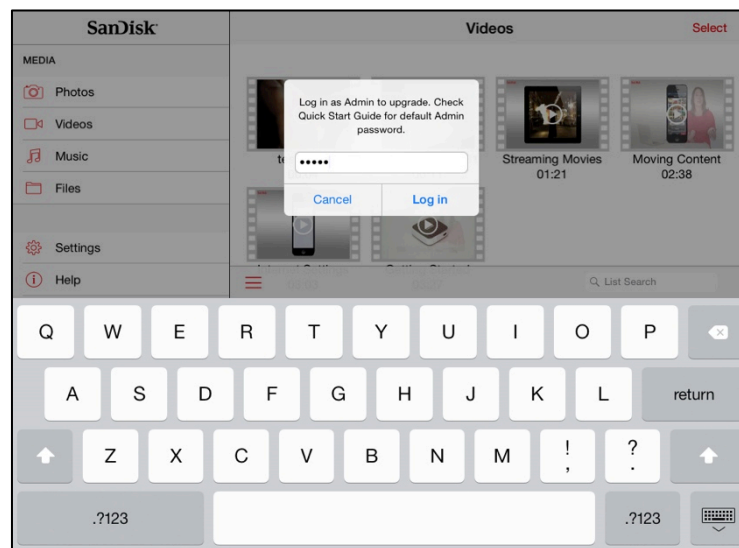
6. Tap **Upgrade** to begin the Firmware upgrade.

A Firmware Upgrade window details the upgrade process and confirms the upgrade:



7. Tap **Upgrade**.

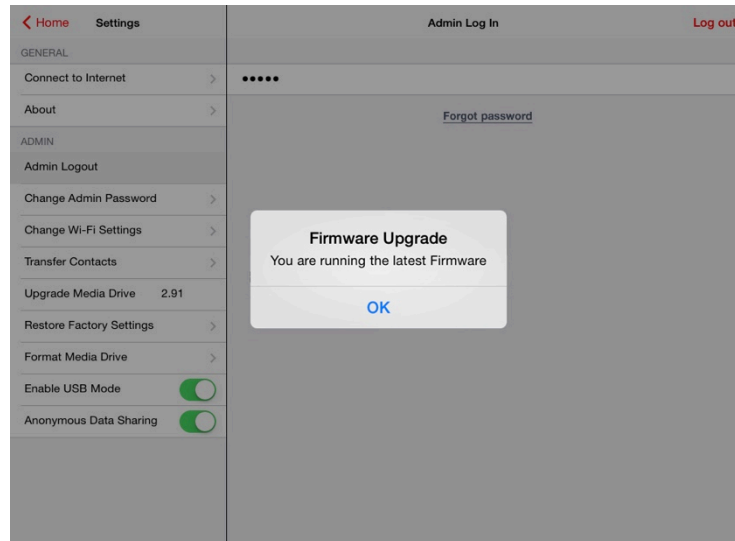
If you are not currently logged in as an Admin, you are prompted to do so:



The upgrade takes two to three minutes, during which you cannot access the content on the Media Drive. When the upgrade is complete, the Media Drive restarts.

8. Relaunch the app, go to Settings, and tap **Upgrade Media Drive**.

A **Firmware Upgrade** notice informs you that you are running the latest version of the Firmware.



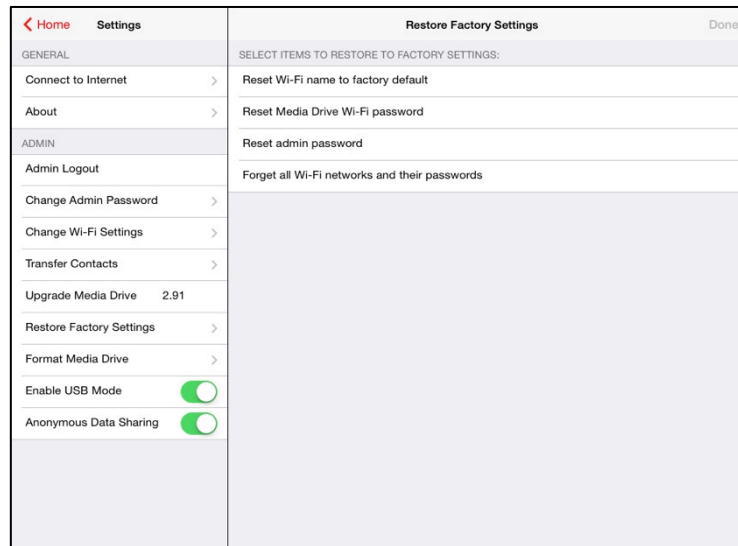
Note: If you choose not to upgrade the Firmware right away, you can go to Settings > Upgrade Media Drive and start the process whenever it's convenient for you.

Restore Factory Settings

You can restore Media Drive settings to the factory defaults. The Drive allows you to choose which settings to restore and which to leave as they are.

Note: Restoring factory settings does NOT delete any content from the Drive.

1. In **Admin Settings** tap **Restore Factory Settings**:



2. In the **Restore Factory Settings** window, select the settings you want to restore to factory defaults and tap **Done**.

A message confirms that the selected defaults have been reset.

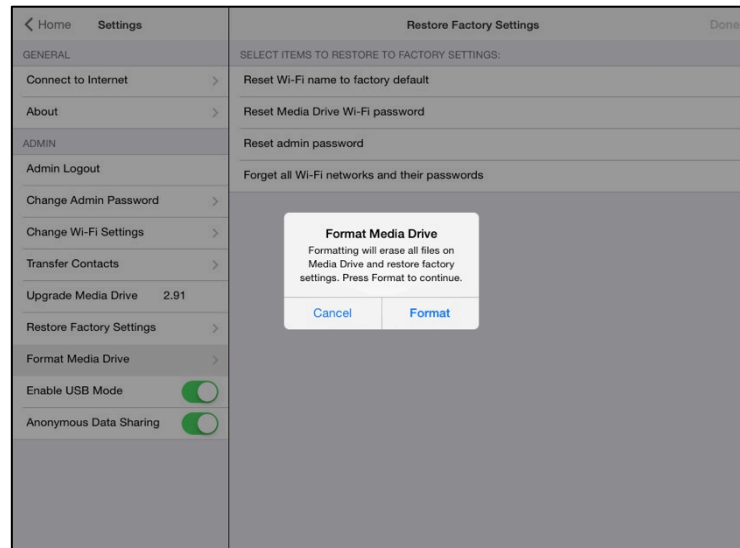
3. Go to your mobile device Wi-Fi settings and reconnect to the Media Drive.

Format Drive

You format a Media Drive to erase all content on the Drive and restore factory settings. This is recommended if you plan to recycle your Media Drive.

Note: Formatting a Media Drive DOES delete all content.

1. In **Admin Settings**, tap **Format Media Drive**:

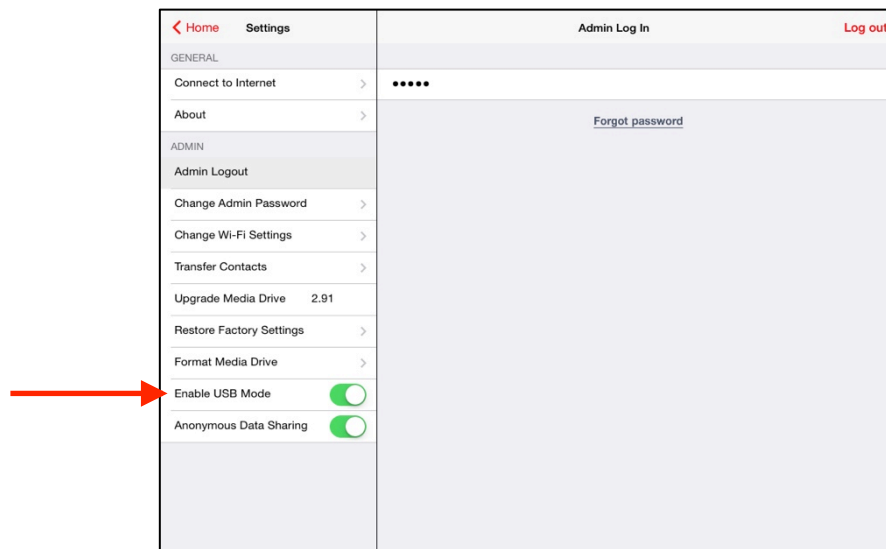


2. In the **Format Media Drive** window, tap **OK** if you're certain you want to proceed.

A message confirms that the formatting is complete and instructs you to restart the app.

USB Access

In order for your computer to see the Media Drive when you connect it, you must turn on **USB Access** in Admin Settings:



5. Product and Safety Information

Product Specifications

Dimensions	66.01x66.01x13.80mm
Weight	70.8g
Memory Card	SD/SDHC up to 32GB SDXC up to 64GB
Battery Type	3.7V/1500mAh Li -polymer
Operating Duration	Up to 8 hours
Battery Charging	Over USB 2.0 powered connection (500mA) or AC adaptor (3 hours to charge)
USB Connectivity	USB 2.0 High Speed USB Mass Storage Class
Wireless Range	45m line-of-sight
Security	None WEP 128-bit WPA2
Environmental Requirements	40C with non-condensing 90%RH
Wireless access System Requirements	WiFi b/g/n 2.4GHz capable device APP of mobile device
USB Access System Requirements	Systems that accept USB 2.0 storage USB 2.0 powered connection (500mA)
Software	Built-in web server Built-in media streamer Upgradeable Firmware
Dimensions	66.01x66.01x13.80mm
Weight	70.8g

Regulatory Information

FCC Compliance Statement: This device complies with Part 15 of the FCC Rules. Operation is subject to the following two conditions: (1) This device may not cause harmful interference, and (2) This device must accept any interference received, including interference that may cause undesired operation.

Note: This equipment has been tested and found to comply with the limits of a Class B digital device, pursuant to Part 15 of the FCC Rules. These limits are designed to provide reasonable protection against harmful interference in a residential

installation. This equipment generates, uses, and can radiate radio frequency energy and if not installed and used in accordance with the instructions, may cause harmful interference to radio communications. However, there is no guarantee that interference will not occur in a particular installation. If this equipment does cause interference to radio or television reception, which can be determined by turning the equipment off and then on, the user is encouraged to try to connect the interference by one or more of the following measures:

- Reorient or relocate the receiving antenna.
- Increase the separation between the equipment and receiver.
- Connect the equipment to a different outlet so that the equipment and receiver are on different branch circuits.
- Consult the dealer or an experienced radio/TV technician for help.

Important: Changes or modifications to this product not authorized by SanDisk could void the electromagnetic compatibility (EMC) and wireless compliance and negate your authority to operate the product. This product has demonstrated EMC compliance under conditions that include the use of compliant peripheral devices and shielded cables between system components. It is important that you use compliant peripheral devices and shielded cables between system components to reduce the possibility of causing interference to radios, televisions, and other electronic devices.

Radiation Exposure: This device complies with the FCC's radio frequency radiation exposure limits set forth for general population/uncontrolled environment. To maintain compliance, this device must not be collocated or operated in conjunction with any other antenna or transmitter. The product complies with the FCC portable RF exposure limit set forth for an uncontrolled environment and is safe for intended operation as described in this manual. Further RF exposure reduction can be achieved if the product is kept as far as possible from the user's body or the device is set to a lower power output if such a function is available.

EU Disposal Information: Disposal & Recycling - Applicable in the European Union and other countries with separate collection systems. To prevent possible harm to the environment or human health from uncontrolled waste disposal, please separate the SanDisk Connect Media Drive from other types of wastes and recycle it responsibly to promote the sustainable reuse of material resources. Household users should contact either the retailer where they purchased this product, or their local government office, for details of where and how they can take this item for environmentally safe recycling. Business users should contact their supplier and check the terms and conditions of the purchase contract. This product should not be mixed with other commercial waste for disposal.

Recycling SanDisk Connect Media Drive: Do not dispose of either the SanDisk Connect Media Drive with your household waste. In some countries or regions, collection systems are set up to handle electrical and electronic waste items. Contact your regional authorities for more details. If collection systems are not available, please return unwanted accessories to any SanDisk Approved Service Center in your region.

EU Declaration of Conformity: Hereby, SanDisk declares that this SanDisk Connect Media Drive is in compliance with the essential requirements and other relevant provisions of Directive 1999/5/EC.

EN 300 328 V1.7.1 (2006-10)
EN 301 489-1 V1.9.2 (2011-09)
EN 301 489-17 V2.2.1(2012-09)
EN 62311:2008
EN 55022:2010
EN 55024:2010

Safety and Care

All wireless devices are susceptible to interference which might affect the performance of a Media Drive.

Do not switch on a Media Drive in restricted areas or areas where wireless devices are prohibited. When instructed to do so, switch off the Media Drive in restricted areas such as those near medical equipment, fuel/chemicals, or blasting areas, or when instructed to in aircraft.

The Wireless Drive contains a lithium polymer battery that has been fully tested for safety. However, several precautions should be taken when using a Wireless Drive:

- When a Wireless Drive is in a pocket with other metallic objects, make sure the cap is in place.
- Never charge a Wireless Drive unattended.
- Charge a Wireless Drive in an area away from flammable materials.
- Never intentionally heat a Wireless Drive in a microwave oven or dryer or place it a fire. Never use the Wireless Drive in temperatures above 60° C (140° F).
- Stop using a Wireless Drive if any abnormal heat, odor, deformation, discoloration, or other abnormal condition is detected. If any liquid leaks from a Wireless Drive, wash your hands well with fresh water immediately. If liquid gets into your eyes, wash with edible oil and see a doctor immediately.

The Media Drive is not water resistant.

Do not store a Media Drive in extreme temperatures. High temperatures can shorten the life of the device by damaging the battery or cause warping or melting of the

plastic enclosure. Cold temperatures can also shorten the life of the Drive by damaging the battery, causing the plastic enclosure to crack, or causing moisture to condense on or inside the device.

Keep the Media Drive dry. Water or other liquids can damage it. In addition, high humidity can cause condensation to form. If a Media Drive gets wet, turn it off, place it in a low-humidity environment, and allow it to completely dry.

Do not store a Media Drive in a dusty or dirty area because mechanical parts may be damaged or cease to work.

Do not attempt to open or modify a Media Drive. It contains no internal serviceable parts. Attempting to modify a Media Drive can damage the device and cause it to operate in violation of government regulations and can cause a safety concern.

Do not drop, shake, strike, crush, or blend a Media Drive as this may damage the device.

If a Media Drive becomes damaged, halt use immediately.

Cleaning

Before cleaning a Media Drive, disconnect it from any USB port or cable, turn off Wi-Fi, and remove the memory card from the card slot. If the outside of the Media Drive is soiled, use a cloth that has been slightly dampened with water to clean the outside. Do not allow water to enter the Media Drive around the power button, USB connector, or card slot.

If foreign material enters the Media Drive through the card slot, attempt to free it by lightly shaking the Drive with the card slot facing down. If this does not work, try using a can of compressed air.

Maintenance and Storage

The Media Drive contains a lithium ion battery that needs proper care for best usage. Note that while the lithium does not have any memory effect, proper care is required for the best usage.

Standard Maintenance

For proper maintenance of the battery, it is best to periodically let the Media Drive discharge. We do not recommend keeping the Media Drive plugged in. For the best battery life, we recommend charging and discharging the Media Drive battery at least once a month.

Long Term Storage

If the Media Drive will not be used, it is best to keep the battery around 50% charged. To charge the battery to approximately 50%, fully discharge the Media Drive until it turns itself off, then let it charge for 1 hour. Store the Media Drive at a temperature between 20° C and 45° C (4° F and 113° F) at a relative humidity of 65% ± 20%.

Recycling

Please recycle all the Media Drive packaging.

When the Media Drive has reached the end of its useful life, return it to a recycling station in your community to prevent uncontrolled waste disposal and dispose of the battery properly.

Index

A

- accessing all media content in one place *40*
- adding to a playlist *36*
- admin login/logout *50*
- adminsettings *49, 50*
 - change admin password *51*
 - change Wi-Fi name *52*
 - connecting to the Internet *55*
 - Firmware upgrade *58*
 - format drive *62*
 - login/logout *50*
 - restore factory settings *61*
 - set/change Wi-Fi security password *54*
 - USB access *63*
 - Wi-Fi settings *52*

- allowing access to your Media Drive *16*

B

- battery LED *3*

C

- change admin password *51*
- change Wi-Fi name *52*
- charging the Media Drive *3*
- cleaning *68*
- common in-app actions *10*
- connecting to the Internet *55*
- connecting to the Media Drive *4*
- controlling music from outside the play screen *37*
- correcting red-eye *25*
- creating a new album *26*
- creating a playlist *33*
- cropping a photo *25*

D

- deleting files *18*
- deleting files and folders *18*
- deleting folders *19, 41*
- downloading a single file *15*

- downloading multiple files *14*
- downloading the Media Drive app *4*

E

- editing photos *24*
- enhancing a photo *25*

F

- files
 - deleting *18*
 - moving *11*
 - opening documents *42*
 - searching *20*
 - selecting *10*
 - sorting *42*
- Firmware upgrade *58*
- folders
 - deleting *19, 41*
- force-closing the app *47*
- format drive *62*

G

- general settings *48*
- getting help *45*

H

- hardware specifications *2*

I

L

- loading content *4*
 - from a computer *5*
 - from a mobile device *5*

M

- maintenance and storage *67*
- managing auto-shutdown *476*
- managing files folder *39*
- managing the Media Drive *46*
- media content
 - loading *4*
 - searching *20*

Media Drive

- adminsettings *49*
- allowing access *16*
- auto-shutdown *46*
- battery LED *3*
- charging *3*
- common in-app actions *10*
- common in-app icons *10*
- connecting to *4*
- downloading the app *4*
- features *1*
- Firmware upgrade *58*
- general settings *48*
- getting started *3*
- hardware specifications *2*
- help *45*
- loading content *4*
- main screen *9*
- managing *46*
- overview *1*
- power button *46*
- settings overview *48*
- supported file formats *2*
- system Requirements *2*
- using a memory card *44*
- Media Drive application overview *9*
- Media Drive Card Upload folder
 - upload files to *14*
- Media Drive Upload folder
 - upload files to *13*
- moving files *11*
 - downloading a single file *15*
 - downloading multiple files *14*
 - sending to others *17*
 - sharing *16*
 - uploading a single file *14*
 - uploading multiple files *11*
- music
 - adding songs to a playlist *36*
 - creating a playlist *33*

- playing *30*
- playing from outside the play screen *37*
- song controls *33*
- sorting *31*
- using playlists *33*
- O**
- opening documents *42*
- P**
- photo
 - enhancing *25*
- photo screen icons *22*
- photos
 - correcting red-eye *25*
 - creating a new album *26*
 - editing *24*
 - playing slideshows *23*
 - rotating *25*
 - using the icons *22*
- playing a song *32*
- playing music
 - 30*
- playing slideshows *23*
- playlists *33*
 - adding to *36*
 - creating *33*
- product and safety information *64*
- product specifications *64*
- R**
- regulatory information *64*
- restarting the app *47*
- restore factory settings *61*
- rotating a photo *25*
- S**
- safety and care *66*
- searching files *20*
- selecting files *10*
- sending files to others *17*
- set/change a Wi-Fi security password *54*

settings

- admin 49
- general 48
- overview 48

sharing files 16

slideshows 23

sorting files 42

sorting music 31

streaming videos 28

supported file formats 2

system requirements 2

U

unresponsive Drive 47

unsupported file formats 21

upgrade media drive 58

upload files to Media Drive Card Upload folder 14

upload files to Media Drive Upload folder 13

uploading a single file 14

uploading multiple files 11

USB access 63

using a memory card 43

using app icons 10

using the music song controls 33

using the power button 46

V

viewing photos 22

W

Wi-Fi settings 52

Wireless Drive

- cleaning 67

- maintenance and storage 67

- product specifications 64

- recycling 68

- regulatory information 64

- safety and care 66

working with media content 9

working with photos 21

- cropping 25

- viewing 22