



USER GUIDE

# IEEE C37.94™ Testing

## Optical Interface between Teleprotection & Multiplexer Equipment (TX320SM and MTTplus-320)

April 2017 | Rev. B00

P/N: D08-00-014

This informative user guide is suitable for novice, intermediate and experienced users, and it is intended to help in successfully using the features and capabilities of the test platform. It is assumed that users have basic computer experience and skills, and are familiar with the required telecommunication concepts, terminology, interfaces, connectors handling and safety.

Every effort was made to ensure that the information contained in this document is accurate. However, information is subject to change without notice. We accept no responsibility for any errors or omissions. In case of discrepancy, the web version takes precedence over any printed literature.

©Copyright VeEX Inc. All rights reserved. VeEX, VePAL are registered trademarks of VeEX Inc. and/or its affiliates in the USA and certain other countries. All trademarks or registered trademarks are the property of their respective companies. No part of this document may be reproduced or transmitted electronically or otherwise without written permission from VeEX Inc.

This device uses software either developed by VeEX Inc. or licensed by VeEX Inc. from third parties. The software is confidential and proprietary of VeEX Inc. The software is protected by copyright and contains trade secrets of VeEX Inc. or VeEX's licensors. The purchaser of this device agrees that it has received a license solely to use the software as embedded in the device, and the purchaser is prohibited from copying, reverse engineering, decompiling, or disassembling the software.



Safety precautions should be observed during all phases of operation of this instrument. The instrument has been designed to ensure safe operation; however, please observe all safety markings and instructions. Do not operate the instrument in the presence of flammable gases or fumes or any other combustible environment. VeEX Inc. assumes no liability for the customer's failure to comply with safety precautions and requirements.

Optics Safely: The test set platform displays a laser warning icon when the laser source is active to alert the user about a potentially dangerous situation. It is recommended to:

1. Deactivate the laser before connecting or disconnecting optical cables or patch cords.
2. Never look directly into an optical patch cord or CFP, XFP or SFP connector interface while the laser is enabled. Even though pluggable optical transceivers are typically fitted with Class 1 lasers, which are considered eye safe, optical radiation for an extended period can cause irreparable damage to the eyes.
3. Never use a fiber microscope to check the optical connectors when the laser source is active.

For more technical resources, visit the VeEX Inc. website at [www.veexinc.com](http://www.veexinc.com).

For assistance or questions related to the use of this product, please contact our local representative or contact VeEX directly by calling or e-mail our Customer Care department for customer support. Before contacting our Customer Care department, have the product serial number and software versions ready. Locate the serial number for a test platform or module on the back of the chassis. The platform and modules serial numbers, as well as software versions, can be found in the test set >Utilities >About menu. Please provide this information when contacting VeEX customer service.

VeEX Customer Care

Phone: +1 510 651 0500

E-mail: [customercare@veexinc.com](mailto:customercare@veexinc.com)

Website: [www.veexinc.com](http://www.veexinc.com)

# IEEE C37.94™ Testing

## *Optical Interface between Teleprotection & Multiplexer Equipment*

### Introduction

The IEEE C37.94™-2002 standard (reaffirmed in 2008) defined a multi-vendor optical transmission interface to be used by power utility companies to replace existing electrical supervisory control and data acquisition links. Low level electrical links were considered unreliable for use in the power industry as they are prone to interference and damages due to intra-substation electromagnetic interference (EMI), electric shock, signal ground loops, ground potential rise and safety, among other electrical issues. Optical links and fiber optics don't have such problems.

C37.94 was originally defined as an 850 nm MMF interface with ST (BFOC/2.5) connectors, but 1310 nm MMF and SMF variants with other connector types could be found today. It is capable of transmitting a single data stream at Nx64 kbit/s, with N being 1 to 12 (64 to 768 kbit/s). It uses a simple framing structure and a line rate of 2048 kbit/s. Every bit in the data channel is encoded as a two-bit symbol consisting of the original data bit and its complement (01 or 10) assuring enough transitions to help with clock recovery.

The frame alignment signal is carried in the header, as a 16-bit pattern that alternates every frame:

- Framing pattern 1: 1001 1011 0000 1111
- Framing pattern 2: 11y1 1111 0000 1111 (y = yellow alarm indication bit. 1 indicates alarmed condition)

The framing pattern is followed by a 48-bit p -p q -q r -r s -s 1 0 1 0 1 0 1 0...1 0 overhead pattern, where the **pqrs** bits represent the N value or data rate multiplier. The alternate trailing **10101010** pattern in the following five time slots is used to seed the clock recovery circuitry and serve as a preamble to client data.

### Loss of Signal (LOS) and Loss of Frame Alignment (LOF)

Although the standard recognizes the ITU-T G.706 LOF definition as the event that starts after the detection of three consecutive incorrect frame alignment signals, IEEE considers loss of framing a link Loss of Signal (LOS) condition. In C37.94, LOS is declared when the optical signal is too low or the frame alignment is lost.

Per IEEE, the LOS condition is declared upon receiving two or more errors in eight consecutive framing patterns, and cleared upon receiving eight consecutive correct framing patterns.

VeEX test sets report Frame (induced) LOS and Signal (induced) LOS separately to provide extra information to users for better problem isolation and troubleshooting purposes.

### Remote Defect Indication (RDI) and Yellow Alarm

Although the IEEE C37.94 refers to RDI path defects (as defined by ITU-T G.775), their official name for this far-end alarm status is **Yellow alarm**. RDI has become a more common term, but some users may use RDI and others Yellow, to refer to the alarm sent by the far end to indicate that there is a problem with the received signal. The yellow alarm indicator is carried by the third bit (y) in the second frame alignment signal.

### Alarm Indication Signal (AIS)

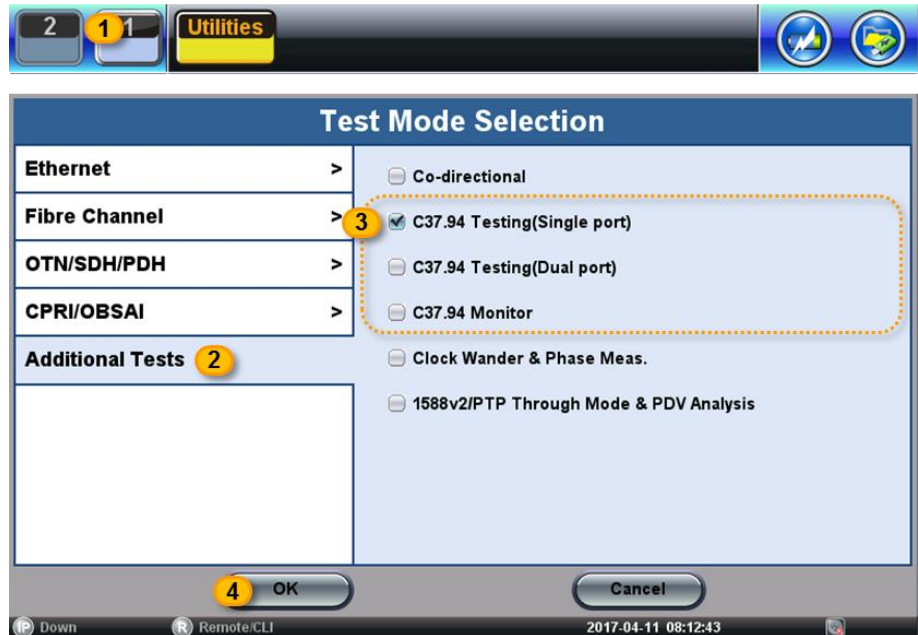
When a network element declares loss of signal at its receiver, it sends a Yellow (RDI) alarm back to the originating equipment to notify the problem and an AIS alarm to all other equipment located upstream (in the direction of the original transmission). The AIS consist in replacing data channels' line bits (time slots 8 to 31) with an All 1s pattern.

## Getting Started

### Starting the C37.94 Test Application

Turn the test set ON.

- From the welcome screen, select the Test Application button **1**.
- Select **Additional Tests** from the technologies section.
- Check the **C37.94 Testing (Single Port)** or (**Dual Port**) test mode, for single or dual BERT capabilities. A **C37.94 Monitor** test mode is also available for bidirectional monitoring (Rx-only with optical splitters) or in-line pass-through<sup>1</sup> mode (each port retransmits what it receives).
- Press **OK** to start the C37.94 application.



After a few seconds the C37.94 Menu is displayed and the application button turns yellow (active), displaying C37.94 as the application running.

### User Interface Elements

- Utilities button – Provides access to the test platform setting and global functions.
- Test Application button – Indicates the current active test application. Tap on this button to release or change the current Test Mode.
- Testing – Indicates that a test is currently running.
- Laser Status – Indicates if the laser is currently ON or OFF.
- Alarm Generation – Indicates that an alarm is being inserted to the TX test signal.





<sup>1</sup> In-line pass-through, also known as “transparent” mode, is an intrusive test that is usually not recommended for the following reasons: (a) It changes the condition of the link under tests. The signal is regenerated with clean shape and full power, removing the effects from long fiber links, which are common causes of problems in point-to-point optical links. (b) Changing the settings or losing power will make the link fail. Avoid using this test configuration in live links. (c) If connected incorrectly, the test set may loopback both directions of the traffic, which is a condition that could be difficult to identify.

- f. Error Generation – Indicates that errors are being injected into the TX test signal.
- g. Home – Goes back to the Main Menu.
- h. Exit – Goes back to the previous screen or menu level.
- i. Soft LED indicators – Show the main test signal health status. Green = good, Red = bad, Blinking = historical event reminder (e.g. some events that happened while the user was away).
- j. History – Acknowledges and resets the blinking historical reminder. The LED goes back to display its current status. No events or counters are deleted from the test.


In Dual Port mode, Port 1 and Port 2 buttons are shown below the History button, to allow users to quickly switch between the two independent tests. Dual LED columns are also displayed.


- k. Interface Status – Shows that the test set's interface is configured to transmit and receive C37.94 signals.
- l. Start/Stop button – Initiates and terminates a BER test. Tests can also be timed so they stop after a set amount of time.
- m. Error Injection button – Activates and deactivates the error injection function. The type of error and behavior can be programmed using the Alarm/Err button.
- n. Alarm Generation button – Activates and deactivates the alarm generation function. The type of alarm and behavior can be programmed using the Alarm/Err button.
- o. Alarms/Error Settings button – Provides access to the Alarm Generation and Error Injection configuration menu at any time, from any screen.
- p. Laser ON/OFF button – Use this button to turn the test interface laser ON and OFF.
- q. Restart button – Restarts the test, clearing all records and counters, without saving.
- r. The C37.94 Main Menu items are shown in the center of the screen. Results and Configurations are also shown in this main screen area.

## Physical Buttons

Save: Use the  or  button on the test set to save the current test results.

History: The  button has the same effect as the History function. Clears the LED reminders (blinking).

Lock: Use the  button to temporarily disable the touch screen and prevent accidental changes during unattended or long-term tests. An icon on the top-right corner of the screen will indicate whether the screen lock is enabled or disabled.

Capture: The  button can also be temporarily programmed to capture and store screen shots (PNG format). To enable this alternate function go to [>Utilities >Settings >Global >Save Settings](#), select [Save Screen](#), set desired quality (compression) level and the maximum number of images to store in Files.

## Testing C37.94

Fiber optics links or network elements using this simple transmission technology can be verified like regular PDH signals, performing bit error rate tests (BERT), monitoring signal levels, payload errors and alarms.

### Important Notes:

- l. C37.94 Testing is an optional feature and it must be activated in order to have access to its functions.

- II. The C37.94 optical data rate is very low by today's standards and not all modern SFPs are compatible with it (most are designed for rates  $\geq 100$  Mbit/s). Only use SFPs recommended by VeEX, which have are non-blocking and have a clock and data recovery (CDR) capable of working at 2048 kbit/s.
- III. The output signal of modern 850nm SFP modules is stronger than the original standard teleprotection equipment input range. To avoid saturation or invalid measurements, use an optical loopback cord to measure the actual SFP output power. Then add the appropriate in-line attenuator, in the TX direction, to match network elements' output, if necessary (e.g. 5 or 10 dB). Although some modern C37.94 equipment can accept higher power inputs, the original IEEE standard refers to a maximum of -11 dBm output at the TX port. The original dynamic range at the RX was defined as -32 to -11 dBm.
- IV. Although C37.94 defines an optical interface operating at  $830 \pm 40$  nm over multi-mode fiber (MMF) with BFOC/2.5 (ST) connector, it is not uncommon today to find implementations running at 1310 nm MMF or SMF, for longer reach or to reuse existing SMF fiber used for other telecommunication purposes. Common fiber optics connectors or adapters, other than BFOC, may also be found in the field.

## Test Setup

### Signal

The C37.94 Test Application uses VeEX's signature layered test signal configuration user interface, allowing users to build the desired test signal using an intuitive flow chart structure. Tap on each box to have access to all applicable parameters that can be configured.

Hierarchy: No selection. Fixed to C37.94.

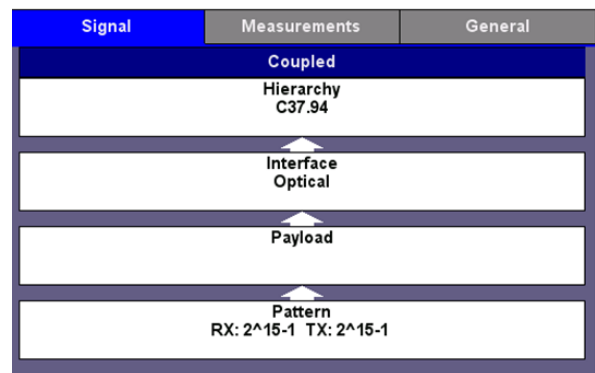
Interface: Let users select the [Clock Source](#) to be used to drive the optical interface.

[Internal](#) – Uses the test set's oscillator to generate the TX test signal.

[External](#) – Uses an external reference clock source applied to the CLK input in the connector panel.

[From RX](#) – Uses the clock recovered from the received signal to time the TX test signal.

[Offset](#) – Adds frequency offset to the internal oscillator to stress the far end receiver clock recovery circuits and verify it complies with the minimum  $\pm 100$  ppm deviation tolerance required by the standard.



Payload: Allow users to configure the TX data rate by entering the number of  $N \times 64$  kbit/s data [Channels](#) to be used for the test. N can be any number between 1 and 12.

If the RX is already connected to the far-end signal, this screen will also show the N value sent by the far end equipment and auto configure the test set's receiver to match. The [Received Channels](#) information can also be used to confirm the N value to be configured in test set's TX channels.

Pattern: C37.94 is a datacom interface and it is always tested with a bulk constant bit rate (CBR) payload carrying a pseudo random bit sequence (PRBS) or test pattern, to identify any data errors.

### Measurement Setup

Select this tab to configure how the BER test behaves. The menu fields will change depending on the selections made.

Mode: **Manual** – User starts and stops the test.  
**Timed** – Allow users to program the duration of the test. When the set time has elapsed, the test set automatically stops the test.  
**Auto** – Programmable start time. Users can enter the exact date and time when they want the test to start and its duration. Press the **Start** button to trigger the function and leave the test set on. Note that no measurements are made until the test starts.

Signal	Measurements	General
Mode		Auto
<b>Start</b>		
Start Time [YYYY-MM-DD hh:mm:ss]		2015 12 31 23 59 00
<b>Duration</b>		
Duration		10
Units		Hours
Results Auto Save		ON
Results Save Interval (min)		60
Auto Server Upload		R-Server
<b>Analysis</b>		
G.821 Allocation		100.00

**Auto Save:** The test set can also be programmed to automatically save results at specific intervals. When enabled, users can also select to automatically upload these results to a centralized R300-Server (requires Advanced Management option and R-Server account) or to an FTP server. Requires server login.

**Analysis:** User can program the hypothetical reference configuration (HRX) allocation to be used for the ITU-T G.821 Pass/Fail performance evaluation. Three distinct quality levels are defined for an end-to-end path (link); two access links (one at each end) with Local and Medium grade and one long-haul link in the middle with High grade. Local links are allowed 15%, Medium grade are allowed 15% and High grade are allowed 40%, for a total of 100% (Local+Medium+High+Medium+Local). Enter the appropriate allocation depending on the section of the end-to-end path being tested. In practice, users testing complete links usually leave this at 100% block error allocation.

## General Setup

Provides extra configuration parameters applicable to the test.

**Audible Alarm:** Enables or disables the audible alarm. When enabled the test set buzzer emits a warning tone. This function is test application dependent and not functional in C37.94 test modes.

**Results on start:** When turned ON, the test set automatically jumps to the Results screen when the **Start** button is pressed. If set to OFF, user has to manually navigate to the test **Results** section.

Signal	Measurements	General
Audible Alarm		OFF
Results on start		ON
Auto Save		OFF
Measurement Clock Source		Internal

**Auto Save:** When turned ON, the test set automatically saves the test results when the **Stop** button is pressed. The file is saved with a temporary name based on the yyyyymmdd-hhmmss time stamp format.

**Meas. Clock Source:** This is a selection for the reference clock that will be used to perform frequency-related measurement on the received signal. **Internal** mode uses the test set's crystal oscillator, while **TX Clock Source** uses the same clock selection set for the transmitter, as configured in >Setup>Signal>Interface.

## Test Results

In general, the following color coding is used to identify the status.

- Red: Errors or alarms are present.
- Yellow: Errors or alarms have been detected but are no longer present.
- Green: Good! No errors or alarms have been detected.

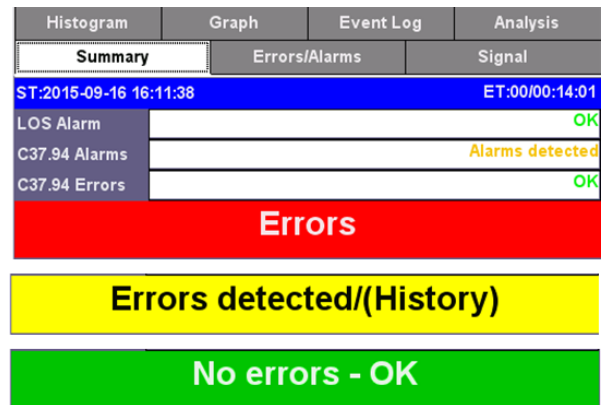


## Summary

Shows the overall status of the current test.

- ST: Start Time. Date and time when the test started.
- ET: Elapsed Time. Total time that the current test has been running.
- RT: Remaining Time. During timed tests it indicates how much time is still left before the test stops.

The bottom banner shows the overall status, while the individual fields at the top provide more information about which layers may have been affected.



## Errors/Alarms Summary

The first page of this detailed test results report shows a layer-by-layer summary of all Alarms and Errors being monitored. Tap on the individual indicators to quickly access detailed count and rate measurements. The arrow buttons on the bottom can also be used to navigate the results page by page.

## Signal

All physical layer information can be found in this tab.

**Level** – Received optical power readings as reported by the transceiver. Presented in numerical and graphical format.

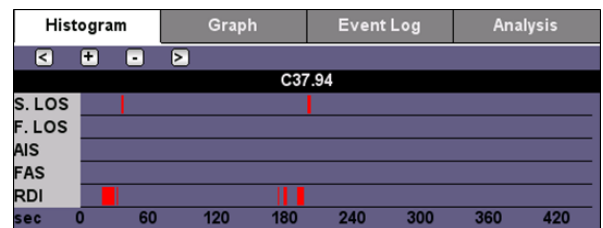
**Frequency** – Received clock measurement and clock offset calculation in parts per million (ppm).

**Optical** – Displays transceiver related information.

**SFP** – Graphical display of received power level fluctuations over time.

## Histogram

Shows the sequence of errors and alarms over time. It can be used to correlate intermittent problems to other events (e.g. power loss, storms, vibration, etc.) or identify if the problem is cyclic or random in nature. User can zoom in and zoom out using the [+] and [-] buttons to view the results in hours, minutes or seconds. In zoom mode, use the [<] and [>] icons to navigate the different time windows.



## Graph

Displays the behavior of individual error or alarm in a bar graph format over time. It is used to identify the severity of each event over time to understand its behavior. User can zoom in and zoom out using the [+] and [-] buttons to view the results in hours, minutes or seconds. In zoom mode, use the [<] and [>] icons to navigate the different time windows.

## Event Log

Shows a time-stamped sequence of all events detected during the test, including length or error count for each of the events.

#	Type	Start	Dur/Count
1	Start	2015-09-15 16:28:40.0	
2	RDI (Yellow)	2015-09-15 16:28:40.1	00:00:08.6
3	Bit	2015-09-15 16:28:41.0	767
4	Bit	2015-09-15 16:28:42.0	768
5	Bit	2015-09-15 16:28:43.0	768



### Analysis

Shows G.821 out-of-service (OOS) BER performance analysis with Pass/Fail evaluation. Errored Second (ES), Severely Errored Seconds (SES), Available Seconds (AS), Unavailable Seconds (UAS), Error Free Seconds (EFS).

### Alarm and Error Generation

Configures the behavior of the Alarm Generation and Error Injection soft buttons.

**Alarms:** The test set can generate Signal-based LOS, Frame-based LOS, AIS and RDI (Yellow), in Continuous or Count (timed) modes. In timed mode the alarms can be set to last 0.1, 1, 10 or 100 seconds.

**Errors:** **Error Mode** – The test set can inject errors to the C37.94 structure or to the test Pattern.

**Error Type** – FAS, Bit

**Error Flow** – Determines the behavior of the error injection. It can be set to inject a **Single** error, a **Count** or specific number of errors from 1 to 1000, or a continuous error **Rate** from as low as 1E-9 (1x10<sup>-9</sup>) to as high as 1E-3 (1x10<sup>-3</sup>).

Alarm	
Alarm Mode	C37.94
C37.94 Alarm	RDI (Yellow)
Alarm Flow	Count
Alarm Length	10s
Error	
Error Mode	Pattern
Pattern Error Type	Bit
Error Flow	Rate
Error Rate	1E-3

### C37.94 Data (Received)

Displays a sampling of the C37.94 raw data being received, including framing bits (yellow), Overhead N bits and their complements (blue) and the overhead preamble bits (light gray), followed by data bits and their respective complements (white). Note that only the active channels' pair of bytes will update (depending on the N value). Unused channels (two bytes) will display the idle code 10101010 10101010 (FF).

Use the **Pause** button to capture 16 consecutive frames.

The **Page** field at the bottom is to review up to 16 captured frames. Odd frames show Framing Pattern 1 and even frames show Framing Pattern 2, including the RDI (Yellow) alarm bit.

T/S	Line bits	Hex	T/S	Line bits	Hex	T/S	Line bits	Hex
0	10011011	9B	1	00001111	0F	2	01001010	4
3	11111111	F	4	11111111	F	5	11111111	F
6	11111111	F	7	11111111	F	8	01010101	6
9	00001010	1	10	10001010	8	11	01001010	4
12	10001010	8	13	10101010	E	14	10011010	A
15	00101010	2	16	10101010	F	17	10101010	F
18	10101010	F	19	10101010	F	20	10101010	F
21	10101010	F	22	10101010	F	23	10101010	F
24	10101010	F	25	10101010	F	26	10101010	F
27	10101010	F	28	10101010	F	29	10101010	F
30	10101010	F	31	10101010	F			

Page 1 Prev Next

### Test Profiles

Test configurations can be saved and later retrieved using the Test Profiles function.

- To save the current test configuration, select the **Save As** function and use the keypad to give it a name that represents the use case or test scenario for that specific configuration (site, network element, type of link, data rate, etc.). Press **Apply** to save.
- To update the current test profile with the current test configuration, open the profile menu and select **Save**.
- To retrieve a saved test profile, open the profile menu, select the desired profile from the list and press **Load**. The setting are immediately copied to the test set.

Histogram	Graph	Event Log	Analysis
Summary	Errors/Alarms		Signal
Signal	C37.94	Pattern	
LOS	LOS	LSS	
	AIS	Bit	
	FAS		
	RDI		

- To delete a test profile, open the profile menu, select the desired profile from the list and select **Delete**.

Test profiles can also be managed using the test platform File Manager. Go to **>Utilities >Files >Saved**.

## File Manager

Use the **>Utilities >Files >Saved** function to manage (view, rename, delete, lock) test results, test profiles and captured screens. Here you can also export and import test results to/from a USB memory stick or create PDF reports (directly saved into the USB memory).

## Round Trip Delay (RTD)

With a loopback at the far-end, the test set can measure the time it takes especially-marked bits to make the round trip. This measures the total of fiber length and equipment delay combined. The loopback can be fiber optics, electrical (in case it terminates in other Datacom interface) or logical (triggered inside network elements).

The test can be configured to run a single measurement, **Repeat = OFF**, if the total delay is not expected to change over time, or **Repeat = ON** to run it continuously. When Repeat is enabled, the test set will keep track of the Current (last), Maximum, Minimum and Average times measured. Turn the **Laser ON** and **Calibrate** it by looping the test patch cord, before measuring the link's RTD. Measurement resolution is 1  $\mu$ s.

Setup	
Repeat	ON
ST:2015-10-22 15:10:17      Results      ET:00/00:00:32	
Time [ms]	0.012 ms
Max Time [ms]	0.012 ms
Min Time [ms]	0.012 ms
Average Time [ms]	0.012 ms
Result	Running...

Round Trip Delay (RTD) is a popular communication path length verification tool, due to its simplicity. It only requires one test set and a logical or physical loopback at the far-end. The link delay (cable plus active network elements) is calculated as  $RTD/2$ . It assumes that all TDM links are symmetrical. That assumption may have been true for Datacom, C37.94, PDH, DS<sub>n</sub>, SDH and SONET, except for certain SDH/SONET ring configurations. Today, with the introduction of packet networks, circuit emulation and the encapsulation of legacy streams into Ethernet, the situation may have changed in some cases.


## One-Way Delay Measurements (Latency and Asymmetry)

Certain timing-sensitive applications require symmetric data links so a dual-ended One-Way Delay (OWD) test is required to verify the data latency in each direction of the link. The two test sets used, one at each end, require access to accurate time. This timing source is provided by a 1PPS signal from GPS Clock (built-in or external). The rising edge of the one-pulse-per-second signal indicates the beginning of a second everywhere in the world. The 1PPS is used to synchronize the clocks in both test sets.

The OWD test must work with C37.94 bursty behavior (data transmitted every 125 $\mu$ s) and be compatible with any Nx64k data rate, network element, multiplexer, DS<sub>n</sub>, PDH, SDH or SONET equipment in the path, to achieve meaningful resolution and accuracy.

OWD is a coordinated test that requires both test sets (and users) to be ready and following each other's status over the phone or any other communication mean. Users in sites A and B must have access to:

- A traceable **External 1PPS** signal (from a GPS clock) connected to the test set's CLK (SMA) input port, or
- The built-in **GPS** option in the test set and have its antenna installed with unobstructed wide view to the sky.

For the built-in GPS receiver, connect the antenna to the SMA connector, go to >Utilities >Settings >More >High Precision Clock Source >GPS, turn GPS ON, wait until satellites are detected (at least four with >36 dBHz) and the GPS Status = Lock (the GPS icon  on the bottom-right of the screen turns green). Notify your partner at the far end and go back to the C37.94 app to begin testing. This is not required if an External 1PPS is used as reference.

Network elements and multiplexers are usually responsible for most of the latency added to the path (link), with fiber being responsible for adding around 0.5μs for every 100m of cable. The example diagram only includes the fiber part of the link, as it is considered the worst case scenario (shortest delays) and highlights the importance of having enough accuracy and resolution (1μs or better) in order to measure cables' contribution.



Once both test sets are synchronized to the standard second (1PPS), connect them to their respective local C37.94 ports, turn the laser ON and verify proper end-to-end connectivity (Signal, Frame, Pattern and no errors or alarms).

Enter the One Way Delay function and confirm with the far-end that they are also in the OWD measurement screen. Press the **Start** button to start measuring the incoming delay (Return Path) and receiving the outgoing delay from the far end (forward path).

Important: Keep both test sets in the One Way Delay screen. If one of the test sets leaves the OWD test feature, the other test set may start reporting invalid results. **Stop** the test and save the results before quitting the OWD application.

In Dual Port mode, the test set allows running a bi-directional OWD test with only one meter. This is useful for troubleshooting problems in a lab or repair center or fine-tuning network settings when access to both ends of the links are available in one site.

