

Aurora R6/R7

U.2 Solid-State Drive Installation Guide



Notes, cautions, and warnings

 | **NOTE:** A NOTE indicates important information that helps you make better use of your product.

 | **CAUTION:** A CAUTION indicates either potential damage to hardware or loss of data and tells you how to avoid the problem.

 | **WARNING:** A WARNING indicates a potential for property damage, personal injury, or death.

© 2018 Dell Inc. or its subsidiaries. All rights reserved. Dell, EMC, and other trademarks are trademarks of Dell Inc. or its subsidiaries. Other trademarks may be trademarks of their respective owners.

Contents

1 Before working inside your computer	4
Before you begin	4
Safety instructions.....	4
Recommended tools.....	5
2 Installing the U.2 solid-state drive	6
3 After working inside your computer	15
4 Getting help and contacting Alienware	16
Self-help resources.....	16
Contacting Alienware.....	16

Before working inside your computer

NOTE: The images in this document may differ from your computer depending on the configuration you ordered.

Topics:

- [Before you begin](#)
- [Safety instructions](#)
- [Recommended tools](#)

Before you begin

- 1 Save and close all open files and exit all open applications.
- 2 Shut down your computer.

Windows 10: Click or tap **Start** > **Power** > **Shut down**.

NOTE: If you are using a different operating system, see the documentation of your operating system for shut-down instructions.

- 3 Disconnect your computer and all attached devices from their electrical outlets.
- 4 Disconnect all cables such as telephone cables, network cables, and so on, from your computer.
- 5 Disconnect all attached devices and peripherals, such as keyboard, mouse, monitor, and so on, from your computer.
- 6 Remove any media card and optical disc from your computer, if applicable.
- 7 After the computer is unplugged, press and hold the power button for 5 seconds to ground the system board.

Safety instructions

Use the following safety guidelines to protect your computer from potential damage and ensure your personal safety.

- WARNING:** Before working inside your computer, read the safety information that shipped with your computer. For more safety best practices, see the Regulatory Compliance home page at www.dell.com/regulatory_compliance.
- WARNING:** Disconnect all power sources before opening the computer cover or panels. After you finish working inside the computer, replace all covers, panels, and screws before connecting to the electrical outlet.
- CAUTION:** To avoid damaging the computer, ensure that the work surface is flat and clean.
- CAUTION:** To avoid damaging the components and cards, handle them by their edges, and avoid touching pins and contacts.
- CAUTION:** You should only perform troubleshooting and repairs as authorized or directed by the Dell technical assistance team. Damage due to servicing that is not authorized by Dell is not covered by your warranty. See the safety instructions that shipped with the product or at www.dell.com/regulatory_compliance.
- CAUTION:** Before touching anything inside your computer, ground yourself by touching an unpainted metal surface, such as the metal at the back of the computer. While you work, periodically touch an unpainted metal surface to dissipate static electricity, which could harm internal components.
- CAUTION:** When you disconnect a cable, pull on its connector or on its pull tab, not on the cable itself. Some cables have connectors with locking tabs or thumb-screws that you must disengage before disconnecting the cable. When disconnecting cables, keep them evenly aligned to avoid bending any connector pins. When connecting cables, ensure that the ports and connectors are correctly oriented and aligned.

 **CAUTION:** Press and eject any installed card from the media-card reader.

Recommended tools

The procedures in this document may require the following tools:

- Philips screwdriver #1
- Flat-head screwdriver
- Plastic scribe

Installing the U.2 solid-state drive

NOTE: Ensure that you remove the security cable and security screw from the security-cable slot—if applicable.

- 1 Remove the screw (#6-32 X 1/2") that secures the side-panel release latch to the chassis.
- 2 Pull the side-panel release latch.
- 3 Release the left-side cover away from the chassis and then lift it from the computer.



Figure 1. Removing the left-side cover

- | | | | |
|---|-----------|---|--------------------------|
| 1 | screw | 2 | side-panel release latch |
| 3 | top cover | 4 | left-side cover |
- 4 Lay the computer on the right side.
 - 5 Disconnect the data and power cables from the hard drive.
 - 6 Press the release tabs on the hard-drive carrier and slide the hard-drive carrier out of the hard-drive cage.



Figure 2. Removing the hard drive

- | | | | |
|---|--------------------|---|--------------|
| 1 | data cable | 2 | power cable |
| 3 | hard-drive cage | 4 | release tabs |
| 5 | hard-drive carrier | | |

7 Place the U.2 solid-state drive in the hard-drive carrier and align the tabs on the carrier with the slots on the U.2 solid-state drive.

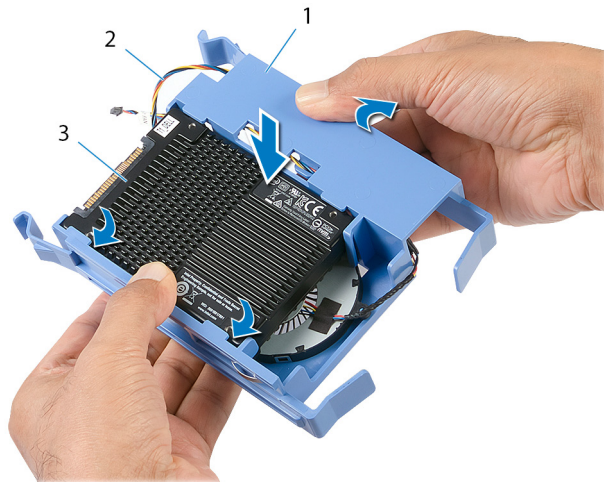


Figure 3. Assembling the U.2 solid-state drive

- | | | | |
|---|--------------------|---|-----------|
| 1 | hard-drive carrier | 2 | fan cable |
|---|--------------------|---|-----------|

3 U.2 solid-state drive

8 Slide the U.2 solid-state drive assembly into the hard-drive cage until it snaps into place.

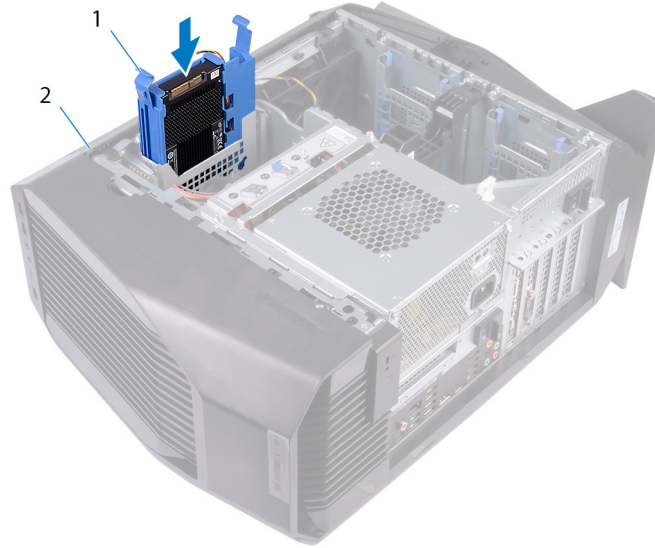


Figure 4. U.2 solid-state drive assembly

1 solid-state drive assembly

2 chassis

9 Slide the power-supply unit cage release latches towards the unlock position.

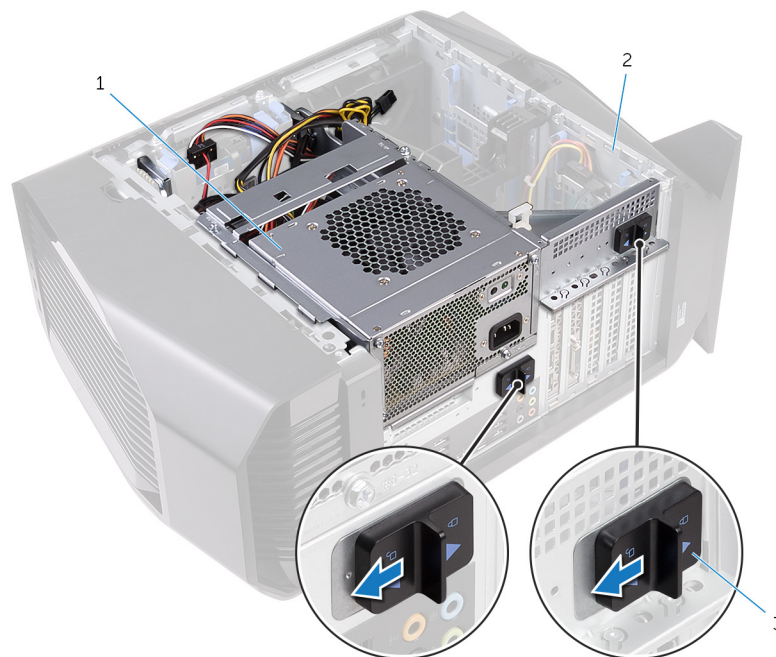


Figure 5. Sliding the power-supply unit cage release latches

1 power-supply unit

2 chassis

3 power-supply unit cage release cage latches (2)

10 Lift the power-supply unit cage while pressing and holding the graphics-card bracket.

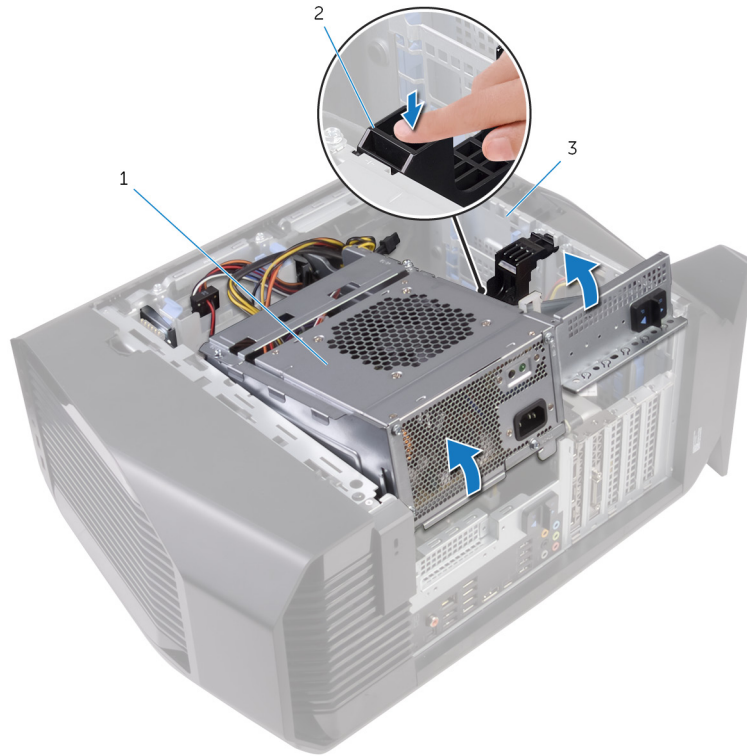


Figure 6. Rotating the power-supply unit

1 power-supply unit cage

2 graphics-card bracket

3 chassis

11 Rotate the power-supply unit cage away from the chassis.

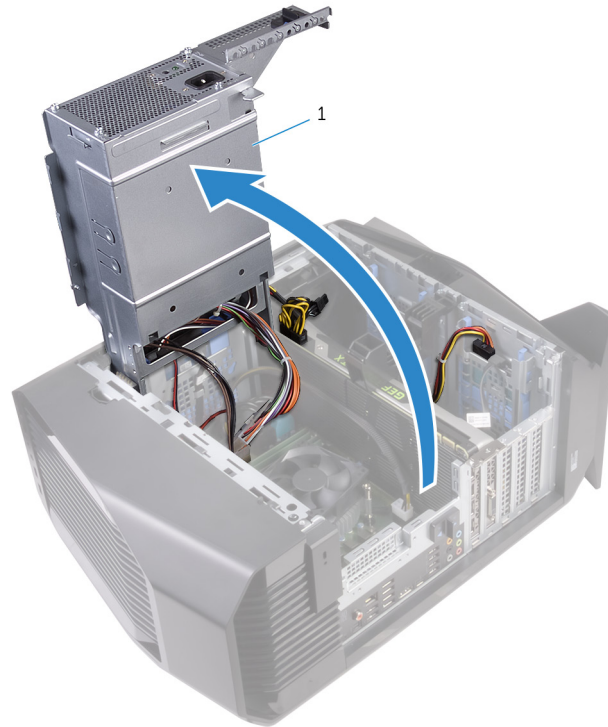


Figure 7. Rotating the power-supply unit

1 power-supply unit

12 Lift to release the graphics-card bracket from the chassis.

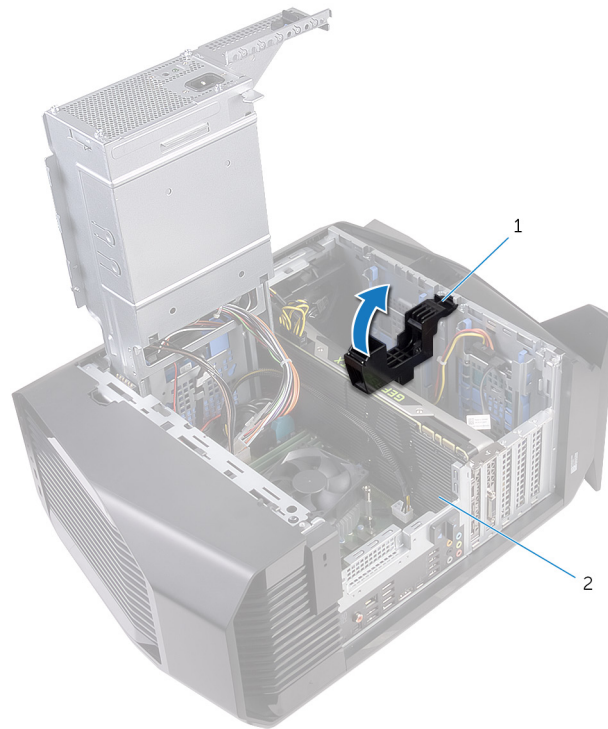


Figure 8. Removing the graphics card

1 graphics-card bracket

2 graphics card

- 13 Press the releasing clip on the power-cable connectors and disconnect the power cables from the graphics card.
- 14 Push the securing tab on the PCIe slot away from the graphics card, grasp the card by its top corner, and ease it out of the slot.

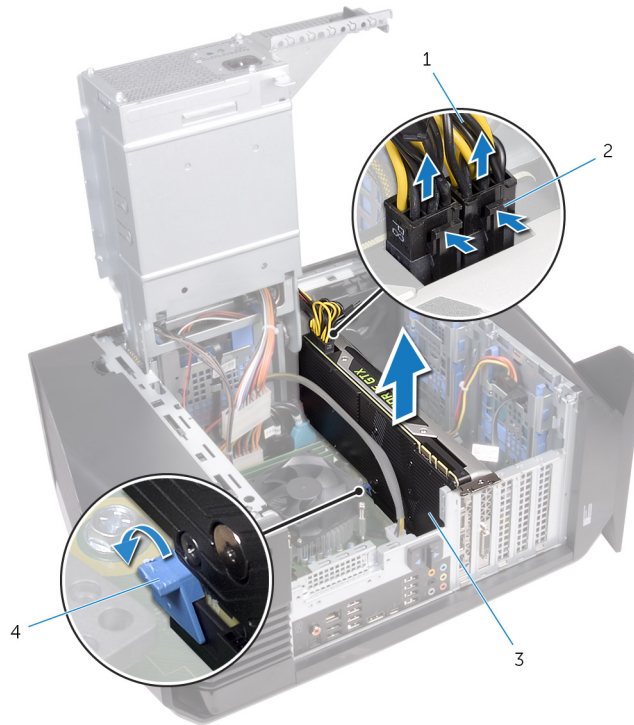


Figure 9. Removing the graphics card

- | | | | |
|---|---------------|---|---------------------|
| 1 | power cables | 2 | releasing clips (2) |
| 3 | graphics card | 4 | securing tab |

- 15 Slide the fan cable and the data and power cable through the power-supply unit cage.
- 16 Connect the fan cable to the system board.
- 17 Connect the power cable to the power-supply unit.
- 18 Connect the data cable to the connector on the solid-state drive adapter.
- 19 Slide the solid-state drive adapter to the solid-state drive slot and replace the screw that secures the solid-state drive adapter to the system board.

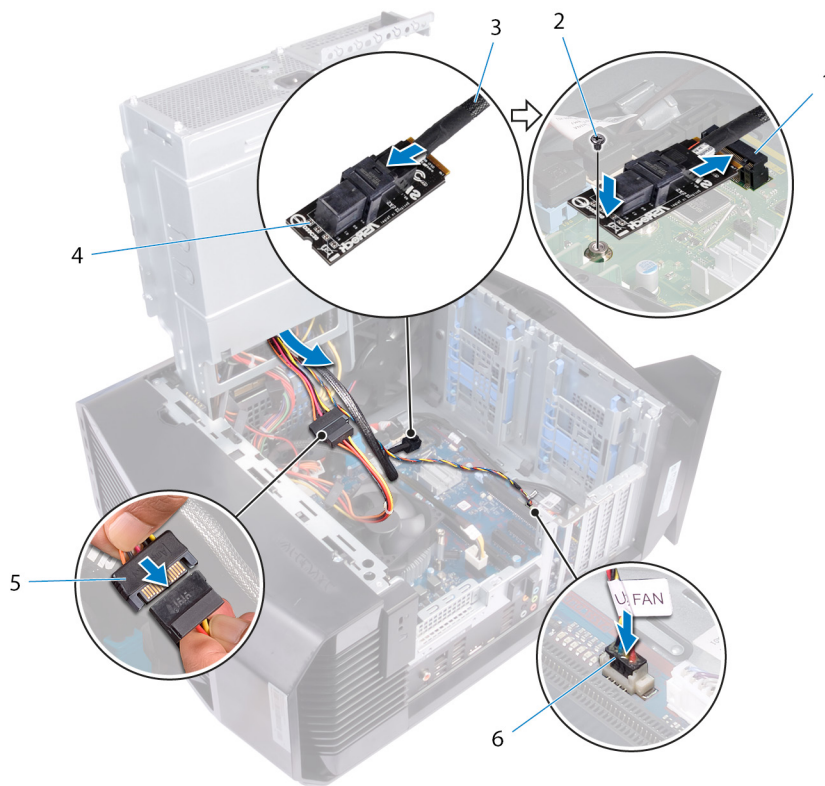


Figure 10. Connecting the cables

- | | | | |
|---|------------------------|---|---------------------------|
| 1 | solid-state drive slot | 2 | screw |
| 3 | data cable | 4 | solid-state drive adapter |
| 5 | power cable | 6 | fan cable |

- 20 Align the graphics card with the slot on the system board.
- 21 Place the graphics card into the slot and press down firmly until the graphics card snaps into place.
- 22 Connect the power cables to the graphics card.
- 23 Slide the tab on the graphics-card bracket into the slot on the chassis and snap it into place.
- 24 Rotate the power-supply unit cage towards the chassis until the unit snaps into place.
- 25 Connect the power cable to the U.2 solid-state drive.

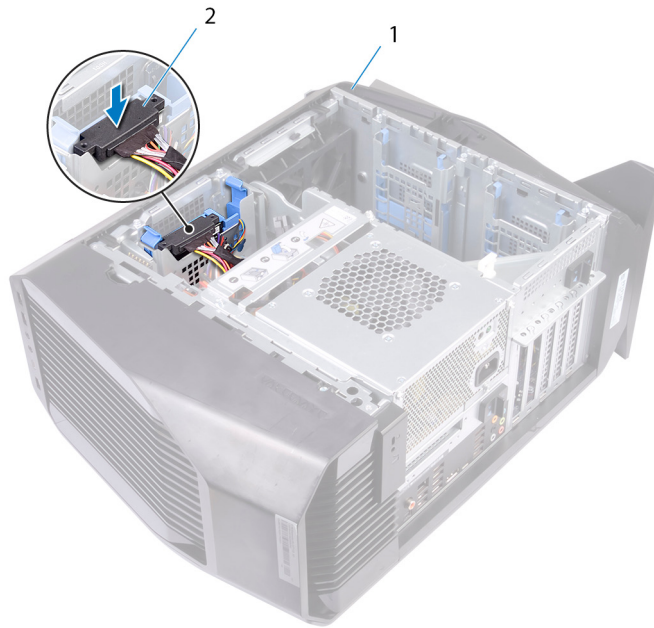


Figure 11. Connecting the power cable

1 chassis

2 power cable

- 26 Place the computer in an upright position.
- 27 Align the tabs on the left-side cover with the slots on the chassis.
- 28 Snap the left-side cover to lock it in place.

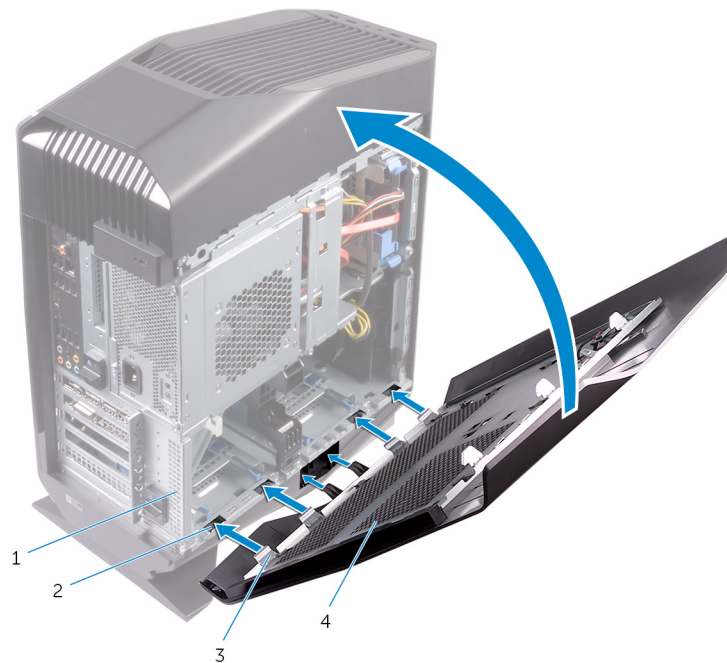


Figure 12. Replacing the left-side cover

1 chassis


2 slots

3 tabs

4 left-side cover

- 29 Replace the screw (#6-32 X 1/2") that secures the side-panel release latch to the chassis.

After working inside your computer

 **CAUTION:** Leaving stray or loose screws inside your computer may severely damage your computer.

- 1 Replace all screws and ensure that no stray screws remain inside your computer.
- 2 Connect any external devices, peripherals, or cables you removed before working on your computer.
- 3 Replace any media cards, discs, or any other parts that you removed before working on your computer.
- 4 Connect your computer and all attached devices to their electrical outlets.
- 5 Turn on your computer.

Getting help and contacting Alienware

Self-help resources

You can get information and help on Alienware products and services using these online self-help resources:

Table 1. Self-help resources

Information about Alienware products and services	www.alienware.com
Troubleshooting information, user manuals, setup instructions, product specifications, technical help blogs, drivers, software updates, and so on	www.alienware.com/gamingservices
Videos providing step-by-step instructions to service your computer	www.youtube.com/alienwareservices

Contacting Alienware

To contact Alienware for sales, technical support, or customer service issues, see www.alienware.com.

- ① **NOTE: Availability varies by country and product, and some services may not be available in your country.**
- ① **NOTE: If you do not have an active internet connection, you can find contact information on your purchase invoice, packing slip, bill, or Dell product catalog.**