




Dell S2418H Dell S2418HX User's Guide

Model: S2418H/S2418HX
Regulatory model: S2418Ht



-  **NOTE:** A NOTE indicates important information that helps you make better use of your computer.
-  **CAUTION:** A CAUTION indicates potential damage to hardware or loss of data if instructions are not followed.
-  **WARNING:** A WARNING indicates a potential for property damage, personal injury, or death.

Copyright © 2017 Dell Inc. All rights reserved. This product is protected by U.S. and international copyright and intellectual property laws.

Dell™ and the Dell logo are trademarks of Dell Inc. in the United States and/or other jurisdictions. All other marks and names mentioned herein may be trademarks of their respective companies.

Contents


About Your Monitor	5
Package Contents	5
Product Features	6
Identifying Parts and Controls	7
Monitor Specifications	9
Plug-and-Play	16
LCD Monitor Quality and Pixel Policy	16
Setting Up the Monitor	17
Attaching the Stand	17
Connecting Your Monitor	17
Setting Up Your Speaker	18
Organizing Your Cables	21
Computer Playback Default Setting (HDMI Cable Connected)	21
Speaker Volume Controls Setting	22
Computer Volume Controls Setting	23
The Speaker of monitor are ready to play music	26
Removing the Monitor Stand	27
Operating the Monitor	28
Turning on the Monitor	28
Using the Front Panel Controls	28
Using the On-Screen Display (OSD) Menu	31

Troubleshooting	45
Self-Test	45
Built-in Diagnostics	46
Speaker Quick Troubleshooting Guide	47
Common Problems.	49
Product Specific Problems	50
Appendix	51
Safety Instructions51
FCC Notices (U.S. only) and Other Regulatory Information51
Contacting Dell51
Setting Up Your Monitor	52
Maintenance Guidelines.	54




About Your Monitor

Package Contents

Your monitor ships with the components shown below. Make sure that you have received all the components and [contact Dell](#) if something is missing.

 **NOTE:** Some items may be optional and may not ship with your monitor. Some features or media may not be available in certain countries.

	Monitor
	Stand
	Speaker
	Power cable (varies by country)
	Power adapter

	VGA cable (S2418HX only)
	HDMI cable
	<ul style="list-style-type: none"> • Drivers and documentation media • Quick Setup Guide • Safety and Regulatory Information

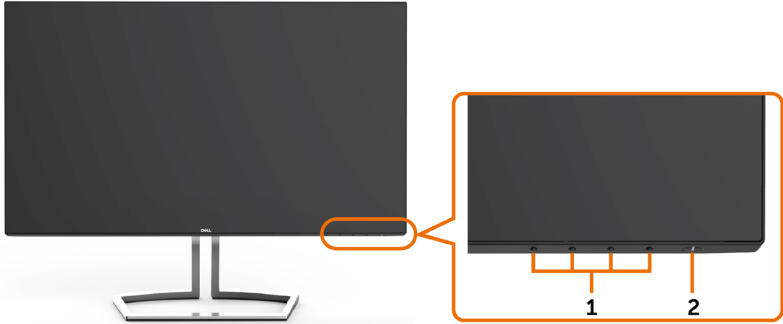
Product Features

The **Dell S2418H/S2418HX** monitor has an active matrix, thinfilm transistor (TFT), liquid crystal display (LCD), and LED backlight. The monitor features include:

- 60.47 cm (23.8-inch) viewable area display (measured diagonally).
1920 x 1080 resolution with full-screen support for lower resolutions.
- Mega dynamic contrast ratio (8,000,000:1).
- Tilt capability.
- Removable stand.
- Plug and play capable if supported by your system.
- Color gamut of sRGB 99% (typical).
- Adapted “High Dynamic Range” appropriate for monitor usage.
- Supports AMD FreeSync™ technology.
- External Speaker.
- On-screen display (OSD) adjustments for easy setup and screen optimization.
- Software and documentation media includes an information file (INF), Image-color matching file (ICM), and product documentation.
- Dell display manager software (available on the disc shipped with the monitor).
- Energy saver feature for energy star compliance.
- Security-lock slot.
- Capability of switching from wide aspect to standard aspect ratio while maintaining image quality.
- BFR/PVC-Reduced (Its circuit boards are made from BFR/PVC-free laminates).
- Arsenic-free glass and mercury-free for the panel only.
- 0.5 W standby power when in the sleep mode.
- Energy gauge shows the energy level being consumed by the monitor in real time.
- Analog backlight dimming control for flicker free display.

Identifying Parts and Controls

Front view



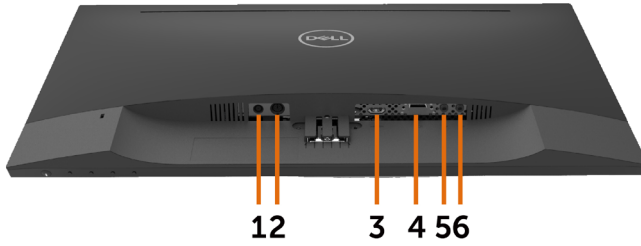
Label	Description
1	Function buttons (For more information, see Operating the Monitor)
2	Power on/off button (with LED indicator)

Back View



Label	Description	Use
1	Security-lock slot	Secures monitor with security lock (sold separately).
2	Barcode, serial number, and Service Tag label	Refer to this label if you need to contact Dell for technical support.
3	Letter etching	Lists the regulatory approvals.
4	Cable-management slot	Use to organize cables by placing them through the slot.

Bottom View



Label	Description	Use
1	DC power connector	To connect the monitor power adapter.
2	mini DIN port	Connect speakers to playback audio coming through HDMI audio channel or audio line-in channels.
3	HDMI port	Connect your computer with HDMI cable.
4	VGA port	Connect your computer with VGA cable (optional).
5	Audio-in port	Connect to your computer audio output.
6	Audio line-out port	Connect to active speakers to playback audio coming through HDMI audio channel or audio line-in channels. Only supports 2-channel audio. NOTE: The audio line-out port does not support headphones. ⚠ WARNING: Excessive sound pressure from earphones or headphones can cause hearing damage or loss.

Monitor Specifications

Flat Panel Specifications

Screen type	Active matrix - TFT LCD
Panel type	In-Plane Switching (IPS)
Viewable image	
Diagonal	60.47 cm (23.80 inches)
Active Area	
Horizontal	527.04 mm (20.75 inches)
Vertical	296.46 mm (11.67 inches)
Area	156246.28 mm ² (242.18 inches ²)
Pixel pitch	0.2745 mm x 0.2745 mm
Viewing angle (CR>10)	
Horizontal	178° (typical)
Vertical	178° (typical)
Luminance output	250 cd/m ² (typical)
Contrast ratio	1000 to 1 (typical) 8,000,000 to 1 (dynamic contrast on)
Faceplate coating	Anti-glare treatment of the front polarizer (3H)
Backlight	LED
Response Time	8 ms (normal), 6 ms (fast)
Color depth	16.7M (6 Bits.+ High FRC)
Color gamut	99% of sRGB

Resolution Specifications

Horizontal scan range	30 kHz to 83 kHz (VGA) 30 kHz to 83 kHz (HDMI1.4) 30 kHz to 140 kHz (HDMI2.0)
Vertical scan range	56 Hz to 76 Hz (VGA) 56 Hz to 76 Hz (HDMI1.4) 29 Hz to 75 Hz (HDMI2.0)
Maximum preset resolution	1920 x 1080 at 60 Hz(VGA/HDMI1.4) 3840 x 2160 at 60 Hz (HDMI2.0)
Video display capabilities (HDMI playback)	480p, 576p, 720p, 1080p,2160p (HDMI2.0)



Preset Display Modes

Display Mode	Horizontal Frequency (kHz)	Vertical Frequency (Hz)	Pixel Clock (MHz)	Sync Polarity (Horizontal/Vertical)
720 x 400	31.5	70.0	28.3	-/+
640 x 480	31.5	60.0	25.2	-/-
640 x 480	37.5	75.0	31.5	-/-
800 x 600	37.9	60.0	40.0	+/+
800 x 600	46.9	75.0	49.5	+/+
1024 x 768	48.4	60.0	65.0	-/-
1024 x 768	60.0	75.0	78.8	+/+
1152 x 864	67.5	75.0	108.0	+/+
1280 x 1024	64.0	60.0	108.0	+/+
1280 x 1024	80.0	75.0	135.0	+/+
1600 x 900	60.0	60.0	108.0	-/+
1920 x 1080	67.5	60.0	148.5	+/+
1920 x 1080	83.9	75.0	174.5	+/-
3840 x 2160	67.5	30.0	297.0	+/+
3840 x 2160	135.0	60.0	594.0	+/+

Electrical Specifications

Video input signals	<ul style="list-style-type: none"> Digital video signal for each differential line Per differential line at 100 ohm impedance VGA/HDMI1.4/HDMI2.0 signal input support
---------------------	--

AC/DC adapter:	
Input voltage/ frequency/current	Delta: 100-240 VAC / 50 or 60 Hz \pm 3 Hz / 1.6 A (maximum) Chicony: 100-240 VAC / 50 or 60 Hz \pm 3 Hz / 1.7 A (maximum)
Output voltage/current	Output: 19.5 VDC / 3.34 A
Inrush current	At 115V/230V, maximum inrush current less than 150A (cold start)

Brand	Manufacturer	Model	Polarity
Dell	Delta	DA65NM111-00	
Dell	Chicony	HA65NS5-00	

Speaker Specifications

Speaker rated power	12W Max.
Loudness number in	2x
Frequency response	100 Hz - 20 kHz
Impedance	8 ohm

Physical Characteristics

Connector type	<ul style="list-style-type: none"> • Speaker connector • HDMI connector • VGA connector • Audio-in • Audio-out
Signal cable type	VGA 1.5 M cable HDMI2.0 1.8 M cable
Dimensions (with stand)	
Height	412.4 mm (16.24 inches)
Width	539.0 mm (21.22 inches)
Depth	162.2 mm (6.39 inches)
Dimensions (without stand)	
Height	315.2 mm (12.41 inches)
Width	539.0 mm (21.22 inches)
Depth	43.8 mm (1.72 inches)
Stand dimensions	
Height	173.7 mm (6.84 inches)
Width	264.0 mm (10.39 inches)
Depth	162.2 mm (6.39 inches)
Weight	
Weight without stand assembly (For wall mount or VESA mount considerations - no cables)	2.66 kg (5.86 lb)
Weight of stand assembly	0.76 kg (1.68 lb)
Weight of speaker	0.38 kg (0.836 lb)

	S2418H	S2418HX
Weight with packaging	6.71 kg (14.79 lb)	6.88 kg (15.17 lb)
Weight with stand assembly and cables	3.83 kg (8.44 lb)	4.0 kg (8.82 lb)
Weight with stand assembly, cables and speaker	4.21 kg (9.28 lb)	4.38 kg (9.66 lb)

Environmental Characteristics

Temperature	
Operating	0°C to 40°C (32°F to 104°F)
Non-operating	-20°C to 60°C (-4°F to 140°F)
Humidity	
Operating	10% to 80% (non-condensing)
Non-operating	5% to 90% (non-condensing)
Altitude	
Operating	5,000 m (16,404 ft) (maximum)
Non-operating	12,192 m (40,000 ft) (maximum)
Thermal dissipation	153.6 BTU/hour (maximum) 88.7 BTU/hour (typical)

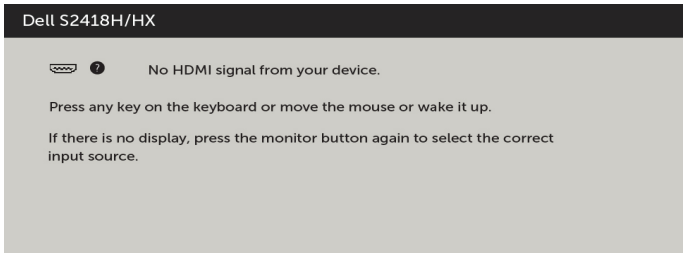
Power Management Modes

If you have VESA's DPM-compliant video card or software installed in your PC, the monitor can automatically reduce its power consumption when not in use. This is referred to as power save mode*. If the computer detects input from the keyboard, mouse, or other input devices, the monitor automatically resumes functioning. The following table shows the power consumption and signaling of this automatic power saving feature.

VESA Modes	Horizontal Sync	Vertical Sync	Video	Power Indicator	Power Consumption
Normal operation	Active	Active	Active	White	45 W (maximum)** 26 W (typical)
Active-off mode	Inactive	Inactive	Off	White (blinking slowly)	Less than 0.5 W
Switch off	-	-	-	Off	Less than 0.3 W

Energy Star	Power Consumption
P _{ON}	14.32 W***
E _{TEC}	45.1 kWh****

The OSD operates only in the normal operation mode. If you press any button in the active-off mode, one of the following message is displayed:



*Zero power consumption in OFF mode can only be achieved by disconnecting the AC mains cable from the monitor.


**Maximum power consumption with maximum luminance.

***Power consumption of on mode as defined in Energy Star 7.0 version.

****Total energy consumption in kWh as defined in Energy Star 7.0 version.

This document is informational only and reflects laboratory performance. Your product may perform differently, depending on the software, components and peripherals you ordered and shall have no obligation to update such information. Accordingly, the customer should not rely upon this information in making decisions about electrical tolerances or otherwise. No warranty as to accuracy or completeness is expressed or implied.

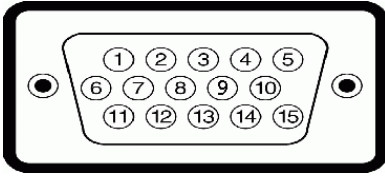
Activate the computer and the monitor to gain access to the OSD.

 **NOTE:** This monitor is **ENERGY STAR** -compliant.



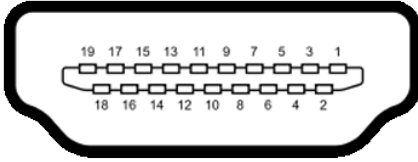
Pin Assignments

VGA connector



Pin number	15-pin side of the connected signal cable
1	Video-Red
2	Video-Green
3	Video-Blue
4	GND
5	Self-test
6	GND-R
7	GND-G
8	GND-B
9	Computer 5 V / 3.3 V
10	DDC-GND
11	GND
12	DDC data
13	H-sync
14	V-sync
15	DDC clock

HDMI connector



Pin number	19-pin side of the connected signal cable
1	TMDS DATA 2+
2	TMDS DATA 2 SHIELD
3	TMDS DATA 2-
4	TMDS DATA 1+
5	TMDS DATA 1 SHIELD
6	TMDS DATA 1-
7	TMDS DATA 0+
8	TMDS DATA 0 SHIELD
9	TMDS DATA 0-
10	TMDS CLOCK+
11	TMDS CLOCK SHIELD
12	TMDS CLOCK-
13	CEC
14	Reserved (N.C. on device)
15	DDC CLOCK (SCL)
16	DDC DATA (SDA)
17	DDC/CEC Ground
18	+5 V POWER
19	HOT PLUG DETECT

Plug-and-Play

You can install the monitor in any Plug-and-Play-compatible system. The monitor automatically provides the computer system with its extended display identification data (EDID) using display data channel (DDC) protocols so the computer can configure itself and optimize the monitor settings. Most monitor installations are automatic; you can select different settings if desired. For more information about changing the monitor settings, see [Operating the Monitor](#).

LCD Monitor Quality and Pixel Policy

During the LCD monitor manufacturing process, it is not uncommon for one or more pixels to become fixed in an unchanging state which are hard to see and do not affect the display quality or usability. For more information on LCD Monitor Pixel Policy, see Dell support site at: <http://www.dell.com/support/monitors>.

Setting Up the Monitor

Attaching the Stand



NOTE: The stand riser and stand base are detached when the monitor is shipped from the factory.



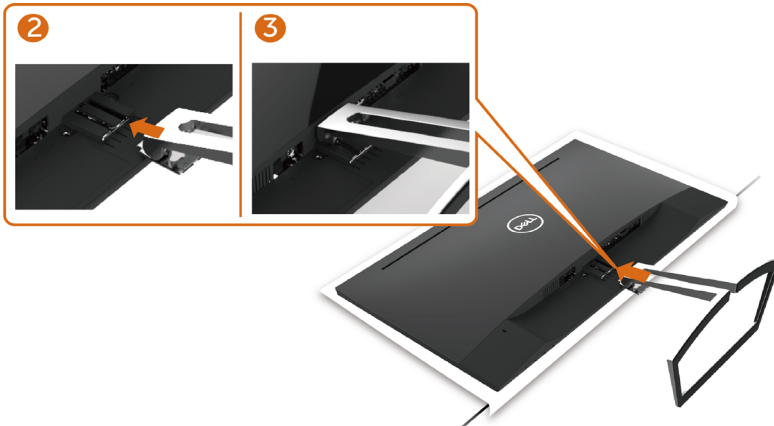
NOTE: The procedure below is applicable for the default stand. If you purchased any other stand, see the documentation shipped with the stand to set it up.



CAUTION: Place monitor on a flat, clean, and soft surface to avoid scratching the display panel.

To attach the monitor stand:

- 1 Remove the monitor protective cover and place the monitor with its front facing downward on it.
- 2 Align the stand bracket with the monitor groove.
- 3 Insert the stand bracket into monitor groove till it snaps into its place.



Connecting Your Monitor

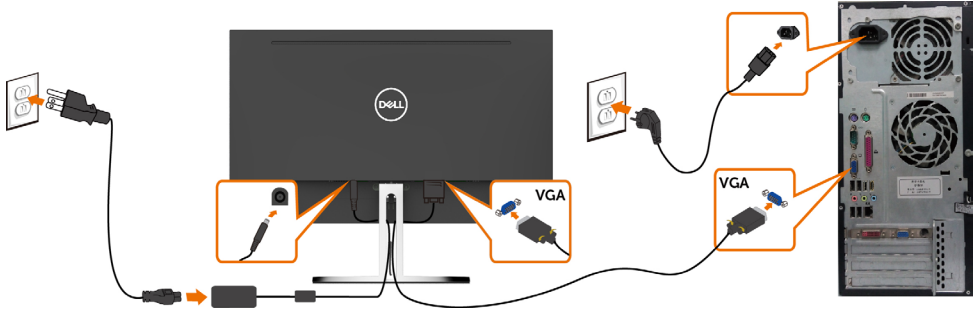


WARNING: Before you begin any of the procedures in this section, follow the [Safety Instructions](#).

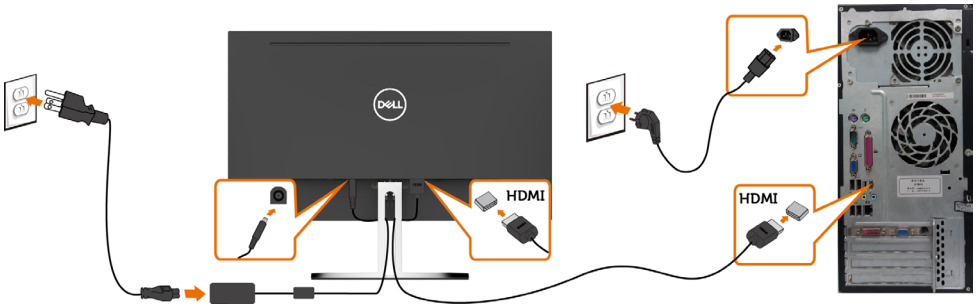
To connect your monitor to the computer:

- 1 Turn off your computer.
- 2 Connect the VGA (Optional)/HDMI cable from your monitor to the computer.
- 3 Place the Speaker into monitor stand.
- 4 Connect the mini DIN cable of Speaker to the monitor.
- 5 Put cable holder of Speaker to the monitor stand.
- 6 Switch on your monitor.
- 7 Select the correct input source at Monitor OSD Menu and turn on your computer.

Connecting the VGA cable (Optional)



Connecting the HDMI cable



Setting Up Your Speaker

Identify the parts of the speaker and Setting Up Your Speaker

- 1 Speaker System consists of the cables connected to the system, Right side of the speaker has 2 buttons: volume + (Up) and Volume - (Down).



- 2 Place the monitor on a stable surface.



- 3** While holding the speaker above the base, insert the speaker cable through the stand slot.



- 4** Insert the speaker in a inclined angle onto the hollow space of stand base.



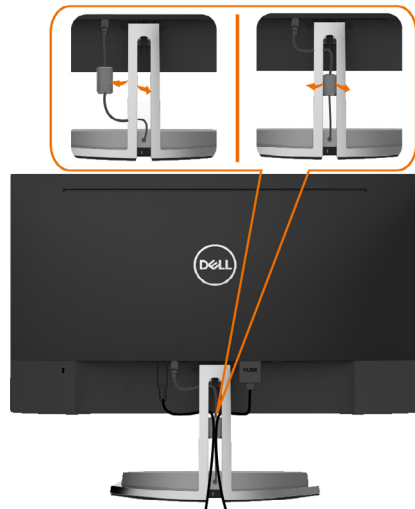
- 5** Ensure the speaker fully inserted and seated stably on the stand base.



- 6 Plug in the mini DIN cable to mini DIN connector located at the back of the Dell monitor, as shown below.



- 7 Insert the cable holder attached on the speaker cable into the stand slot. Adjust the cable holder position along the slot accordingly.



Organizing Your Cables



After attaching all necessary cables to your monitor and computer, (see [Connecting Your Monitor](#) for cable attachment) organize all cables as shown above.

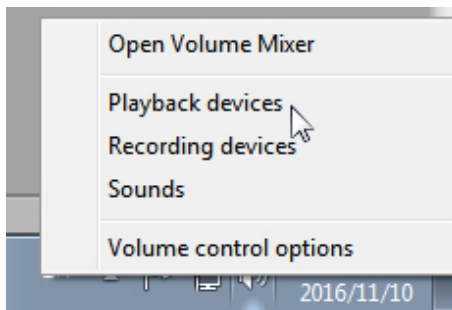
Computer Playback Default Setting (HDMI Cable Connected)

Playback Setting

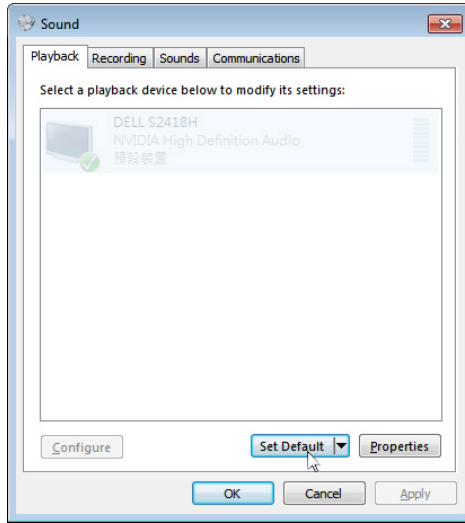
- 1 Right Click the speaker icon.



- 2 Select Playback devices.



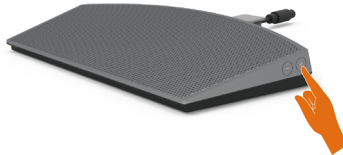
3 Set the speaker as default playback device.



Speaker Volume Controls Setting

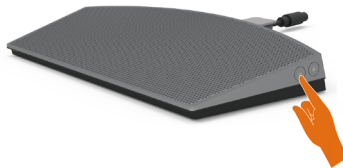
1 Volume +

Press the Volume + button to increase volume.



2 Volume -

Press the Volume - button to decrease volume.



NOTE: Button feedback tone of beep to indicate a button + (volume up to 100) or a button - (volume down to 0).

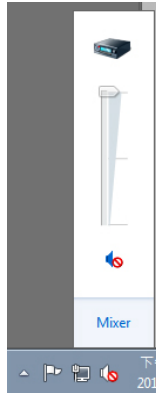
Computer Volume Controls Setting

On board Audio Volume

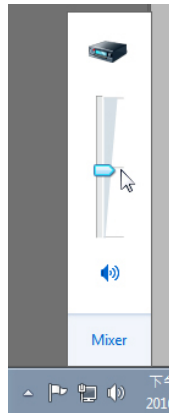
- 1 Left Click the speaker icon.



- 2 Check that the volume bar is no mute.



- 3 Check that the volume bar level is not 0% , UP to increase volume and Down to decrease volume.

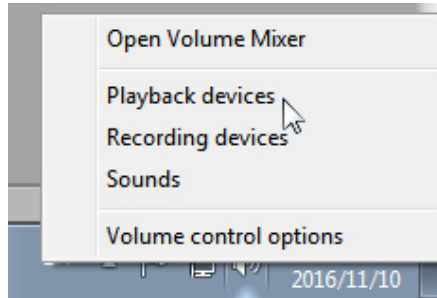


Volume Balance Setting

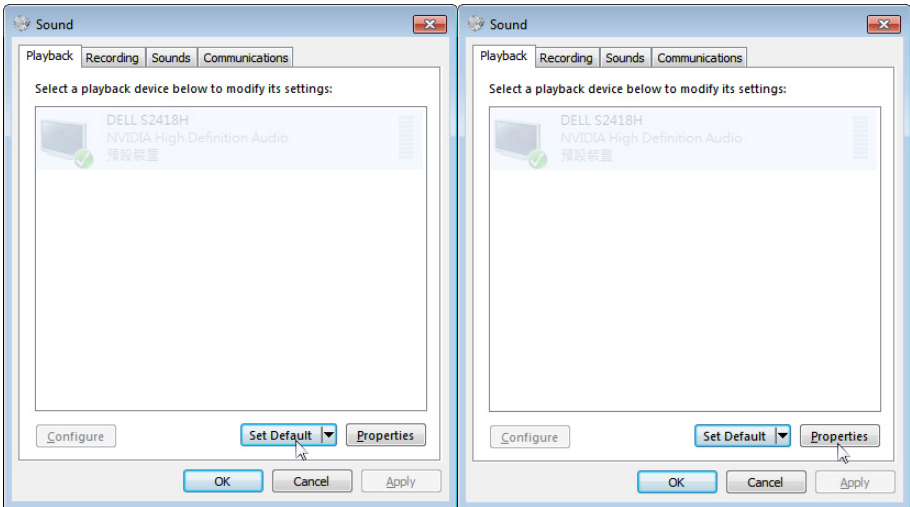
- 1 Right Click the speaker icon.



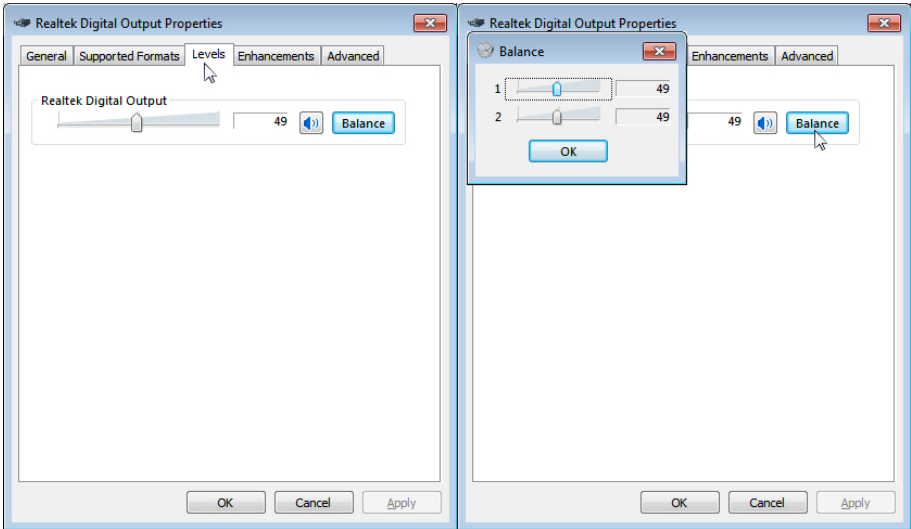
- 2 Select Playback devices.



- 3 Right Click Default Playback devices and select Properties.



4 Select Levels and click Balance.

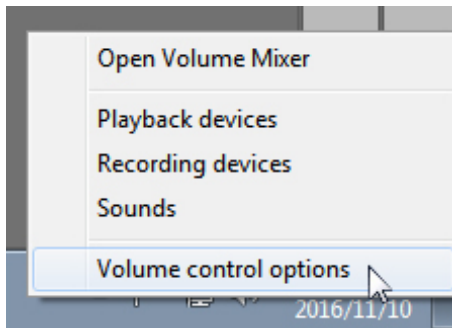


Volume Control Options

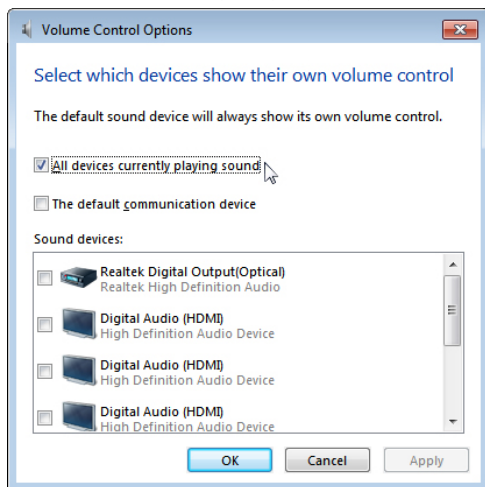
- 1 Right Click the speaker icon.



- 2 Select Volume control options.



- 3 Click the box: All devices currently playing sound.



The Speaker of monitor are ready to play music



Removing the Monitor Stand



CAUTION: To prevent scratches on the LCD screen while removing the stand, make sure that the monitor is placed on a soft, clean surface.



NOTE: The procedure below is applicable for the default stand. If you purchased any other stand, see the documentation shipped with the stand to set it up.


To remove the stand:

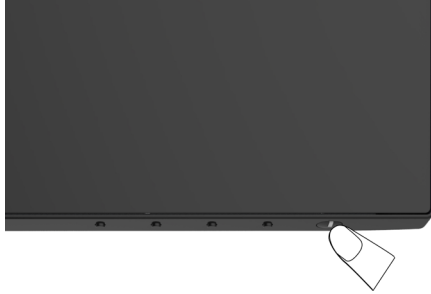
- 1 Place the monitor on the cushion or thick sitting mat near the edge of table.
- 2 Tilt the stand downwards to access to the release latch.
- 3 Use a long and thin screwdriver to push the release latch.
- 4 While pushing the release latch, pull the stand in the arrow direction to remove the stand.



Operating the Monitor

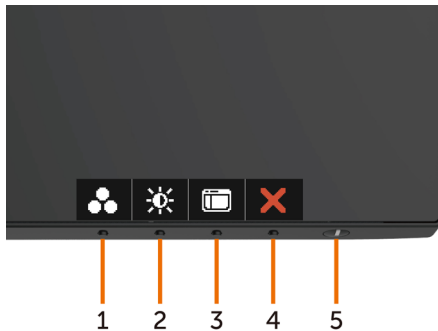
Turning on the Monitor

Press the  button to turn on the monitor.








Using the Front Panel Controls

Use the control buttons on the front of the monitor to adjust the characteristics of the image being displayed. As you use these buttons to adjust the controls, an OSD shows the numeric values of the characteristics as they change.

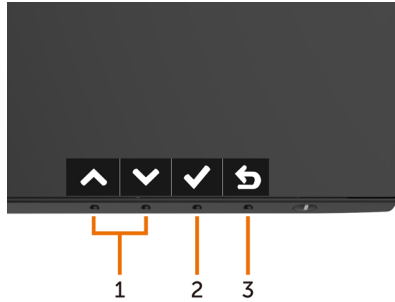






The following table describes the front panel buttons:

Front-Panel Button	Description
1  Shortcut key: Preset Modes	Use this button to choose from a list of preset color modes.
2  Shortcut key: Brightness/Contrast	Use this button to directly access the "Brightness/Contrast" bar.
3  Menu	Use this menu button to launch the on-screen display (OSD) and select the OSD menu. See Accessing the Menu System .
4  Exit	Use this button to go back to the main menu or exit the OSD main menu.
5  Power (with power light indicator)	Use the Power button to turn the monitor On and Off. The white LED indicates the monitor is On and fully functional. A glowing white LED indicates DPMS Power Save Mode.

Front-Panel Button


Use the buttons on the front of the monitor to adjust the image settings.




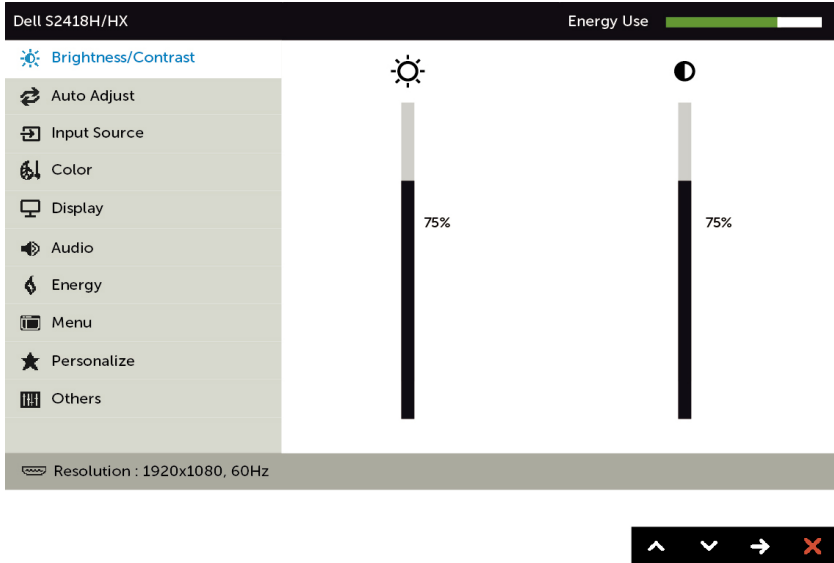
Front Panel Button	Description
1   Up Down	Use the Up (increase) and Down (decrease) keys to adjust items in the OSD menu.
2  OK	Use the OK button to confirm your selection.
3  Back	Use the Back button to go back to the previous menu.








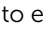
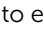
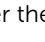


Using the On-Screen Display (OSD) Menu

Accessing the Menu System

 **NOTE:** Any changes you make using the OSD menu are automatically saved if you move to another OSD menu, exit the OSD menu, or wait for the OSD menu to disappear.

- 1 Press the  button to launch the OSD menu and display the main menu.



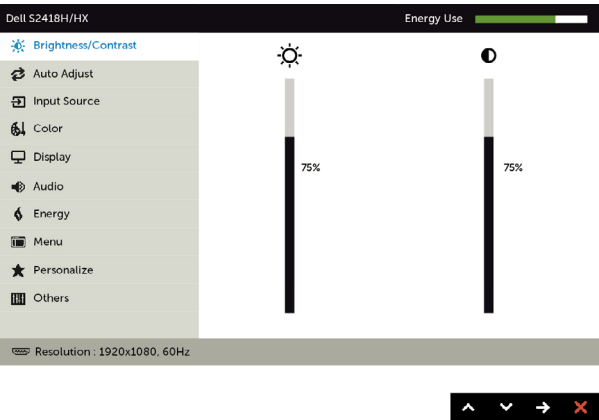
- 2 Press the  and  buttons to move between options. As you move from one icon to another, the option name is highlighted.
- 3 Press the , , or  button once to activate the highlighted option.
- 4 Press the  and  buttons to select the desired parameter.
- 5 Press  to enter the slide bar and then use the  or  button, according to the indicators on the menu, to make your changes.
- 6 Select the  to return to previous menu or  to accept and return to previous menu.




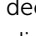
Icon	Menu and Submenus	Description
------	-------------------	-------------



Brightness/Contrast

Use this menu to activate **Brightness/Contrast** adjustment.



Brightness	<p>Brightness adjusts the luminance of the backlight (minimum 0; maximum 100). Press the  button to increase brightness. Press the  button to decrease brightness. NOTE: Manual adjustment of Brightness is disabled when Dynamic Contrast is switched on.</p>
Contrast	<p>Adjust the Brightness first, and then adjust Contrast only if further adjustment is necessary. Press the  button to increase contrast and press the  button to decrease contrast (between 0 and 100). Contrast adjusts the difference between darkness and lightness on the monitor.</p>

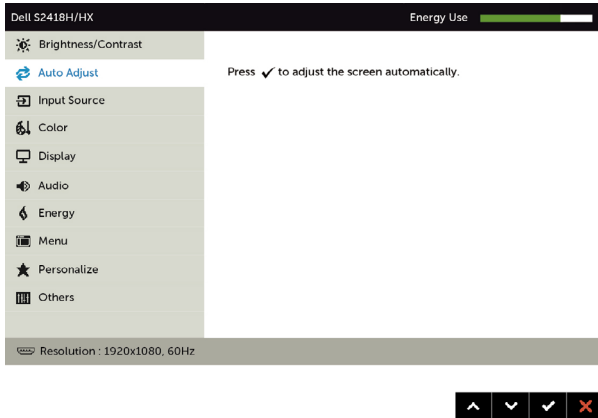
Icon	Menu and Submenus	Description
------	-------------------	-------------



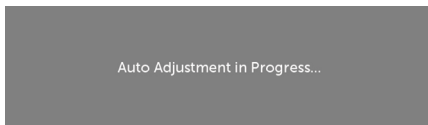
Auto Adjust

Even though your computer recognizes your monitor on startup, the **Auto Adjustment** function optimizes the display settings for use with your particular setup.

Auto Adjustment allows the monitor to self-adjust to the incoming video signal. After using **Auto Adjustment**, you can further tune your monitor by using the **Pixel Clock** (Coarse) and **Phase** (Fine) controls under **Display** menu.



The following dialog appears on a black screen as the monitor automatically adjusts to the current input:



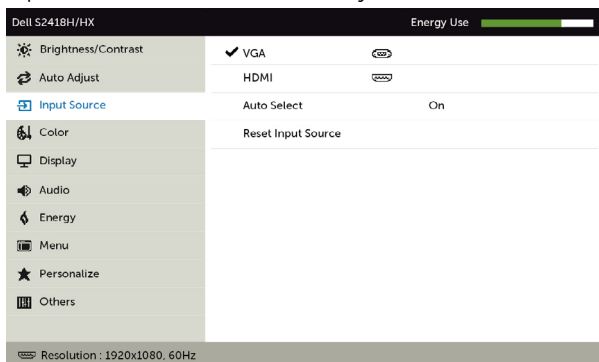
NOTE: In most cases, **Auto Adjust** produces the best image for your configuration.

Icon	Menu and Submenus	Description
------	-------------------	-------------



Input Source

Use the **Input Source** menu to select between different video inputs that are be connected to your monitor.



VGA

Select the **VGA** input when you are using the analog (VGA) connector.

Use to select the VGA input source.

HDMI

Select the **HDMI** input when you are using the HDMI connector.

Use to select the HDMI input source.

Auto Select

Use to select **Auto Select**, the monitor scans for available input sources.

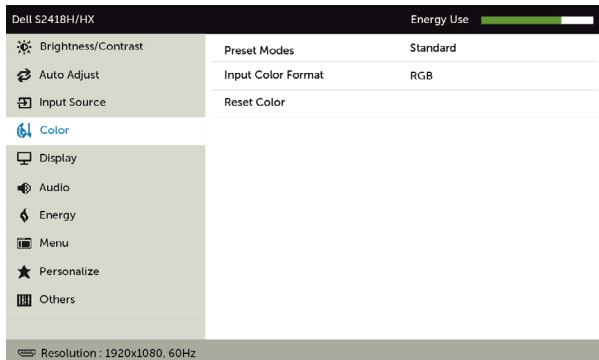
Reset Input Source

Resets your monitor's Input Source settings to the factory defaults.



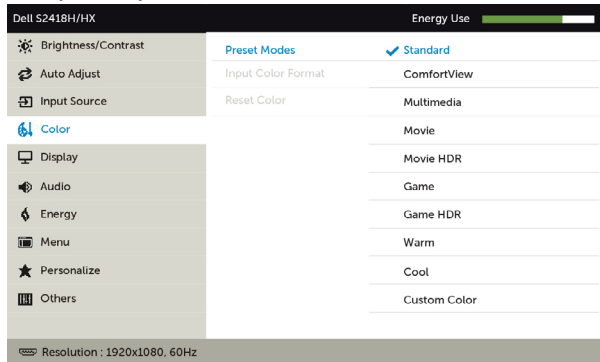
Color



Use the **Color** menu to adjust the color setting mode.



Icon	Menu and Submenus	Description
------	-------------------	-------------

Preset Modes When you select **Preset Modes**, you can choose **Standard, ComfortView, Multimedia, Movie, Movie HDR, Game, Game HDR, Warm, Cool or Custom Color** from the list.



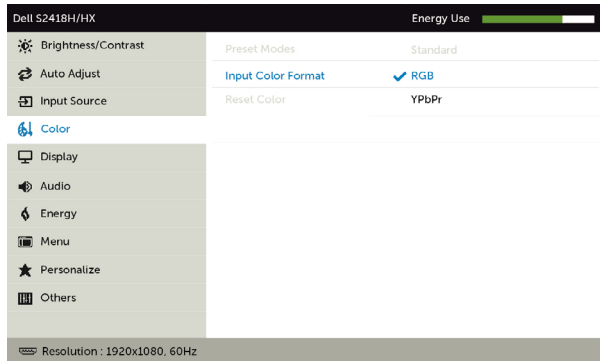
- **Standard:** Default color settings. This is the default preset mode.
 - **ComfortView:** Decreases the level of blue light emitted from the screen to make viewing more comfortable for your eyes.
 - **Multimedia:** Ideal for multimedia applications.
 - **Movie:** Loads color settings ideal for movies.
 - ***Movie HDR:** Loads color settings ideal for movies with HDR supporting.
 - **Game:** Loads color settings ideal for most gaming applications.
 - ***#Game HDR:** Loads color settings ideal for games with HDR supporting.
 - **Warm:** Increases the color temperature. The screen appears warmer with a red/yellow tint.
 - **Cool:** Decreases the color temperature. The screen appears cooler with a blue tint.
 - **Custom Color:** Allows you to manually adjust the color settings. Press the  and  buttons to adjust the Red, Green, and Blue values and create your own preset color mode.
- *HDR:** Adapted “High Dynamic Range” appropriate for monitor usage.
- #Game HDR:** Not compatible with AMD FreeSync™.

Icon	Menu and Submenus	Description
------	-------------------	-------------

Input Color Format

Allows you to set the video input mode to:

- **RGB**: Select this option if your monitor is connected to a computer (or DVD player) using the HDMI.
- **YPbPr**: Select this option if your DVD player supports only YPbPr output.



Reset Color

Resets your monitor's color settings to the factory defaults.



Display

Use the **Display** menu to adjust image.










Aspect Ratio

Adjust the image ratio to **Wide 16:9**, **4:3**, or **5:4**.

Horizontal Position

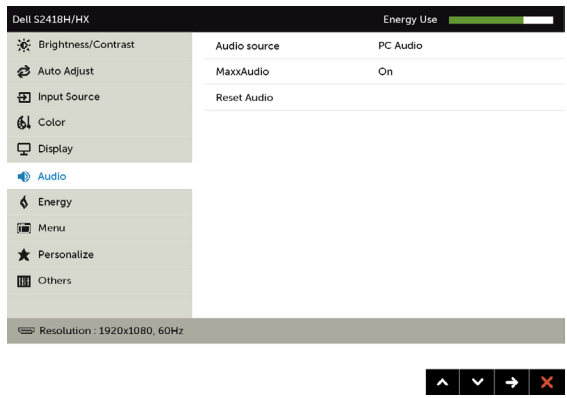
Use or to adjust the image left or right. Minimum is '0' (-). Maximum is '100' (+).

Icon	Menu and Submenus	Description
	Vertical Position	Use  or  to adjust the image up or down. Minimum is '0' (-). Maximum is '100' (+). NOTE: Horizontal Position and Vertical Position adjustments are only available for "VGA" input.
	Sharpness	Makes the image look sharper or softer. Use  or  to adjust the sharpness from '0' to '100'.
	Pixel Clock	The Phase and Pixel Clock adjustments allow you to adjust your monitor to your preference. Use the  or  buttons to adjust for best image quality.
	Phase	If satisfactory results are not obtained using the Phase adjustment, use the Pixel Clock (coarse) adjustment and then use Phase (fine) again. NOTE: Pixel Clock and Phase Adjustments are only available when your monitor is connected using the VGA cable.
	Dynamic Contrast	Allows you to increase the level of contrast to provide sharper and more detailed image quality. Push the  button to select the Dynamic Contrast "On" or "Off". NOTE: For Game and Movie preset mode only. NOTE: Dynamic Contrast provides higher contrast if you select Game or Movie preset mode.
	Response Time	Allows you to set the Response Time to Normal or Fast .
	Reset Display	Restores the display settings to factory defaults.

Icon	Menu and Submenus	Description
------	-------------------	-------------



Audio



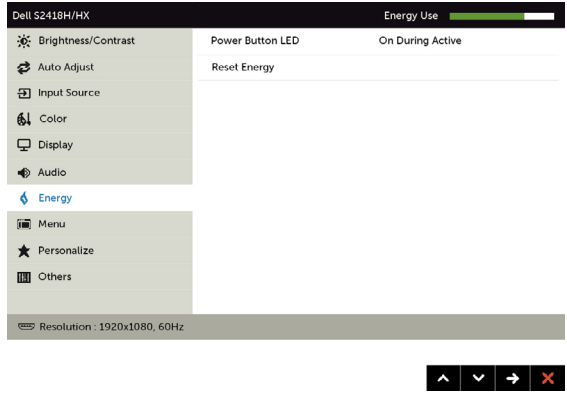
Audio Source Allows you to set the audio source from the main window or the sub-window.

MaxxAudio **ON:** MaxxAudio effect and native frequency response of Diplo Speakers.
OFF: Bypass mode using native frequency response of Diplo Speakers.

Reset Audio Select this option to restore default audio settings.

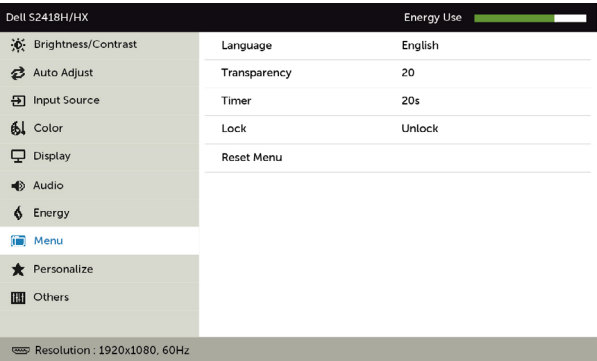






Energy



Power Button LED Allows you to set the state of the power light to save energy.

Reset Energy Select this option to restore default **Energy** settings.

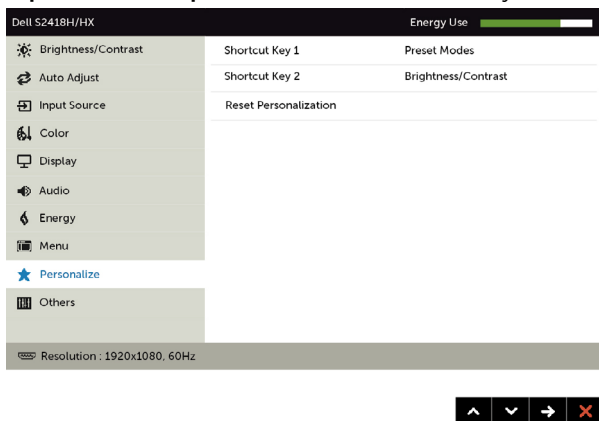
Icon	Menu and Submenus	Description
	Menu	<p>Select this option to adjust the settings of the OSD, such as, the languages of the OSD, the amount of time the menu remains on screen, and so on.</p> 
	Language	<p>Set the OSD display to one of eight languages. (English, Spanish, French, German, Brazilian Portuguese, Russian, Simplified Chinese, or Japanese).</p>
	Transparency	<p>Select this option to change the menu transparency by using  and  (min. 0 / max. 100).</p>
	Timer	<p>OSD Hold Time: Sets the length of time the OSD remains active after you press a button.</p> <p>Use the  and  buttons to adjust the slider in 1-second increments, from 5 to 60 seconds.</p>
	Lock	<p>Controls user access to adjustments. When Lock is selected, no user adjustments are allowed. All buttons are locked.</p> <p>NOTE:</p> <p>Lock function – Either soft lock (through OSD menu) or hard lock (Press and hold the exit button 6 sec)</p> <p>Unlock function – Only hard unlock (Press and hold the exit button 6 sec)</p>
	Reset Menu	<p>Restore the menu settings to factory defaults.</p>

Icon	Menu and Submenus	Description
------	-------------------	-------------



Personalize

Select from **Preset Modes, Brightness/Contrast, Auto Adjust, Input Source, Aspect Ratio** set as shortcut key.



Reset Personalization

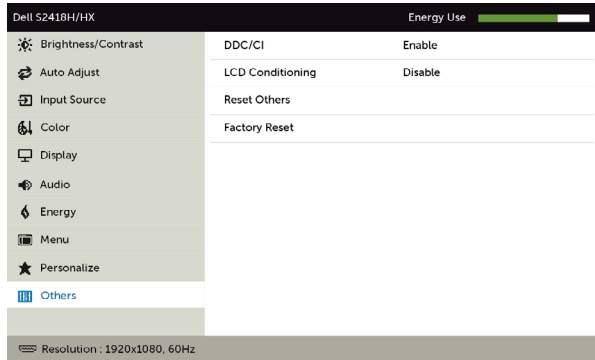
Restores shortcut keys to factory defaults.

Icon Menu and Submenus

Description



Other



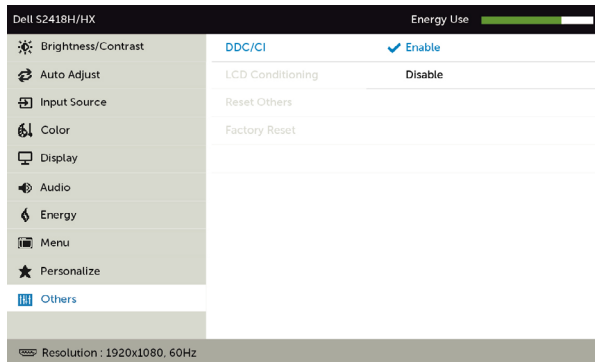
Select this option to adjust the OSD settings, such as the **DDC/CI**, **LCD conditioning**, and so on.

DDC/CI

DDC/CI (Display Data Channel/Command Interface) allows you to adjust the monitor settings using software on your computer.

Select **Disable** to turn off this feature.

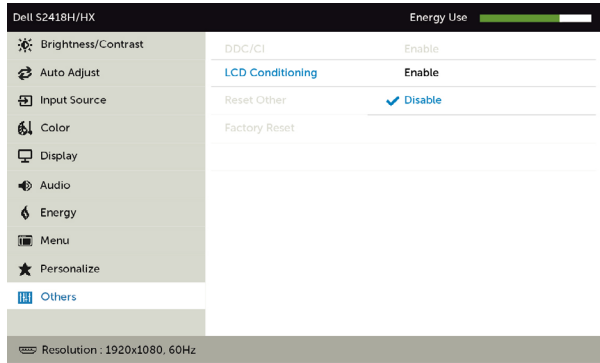
Enable this feature for best user experience and optimum performance of your monitor.



Icon	Menu and Submenus	Description
------	-------------------	-------------

LCD Conditioning

Helps reduce minor cases of image retention. Depending on the degree of image retention, the program may take some time to run. Select **Enable** to start the process.



Reset Others Restores other settings, such as **DDC/CI**, to factory defaults.

Factory Reset Restores all OSD settings to the factory defaults.



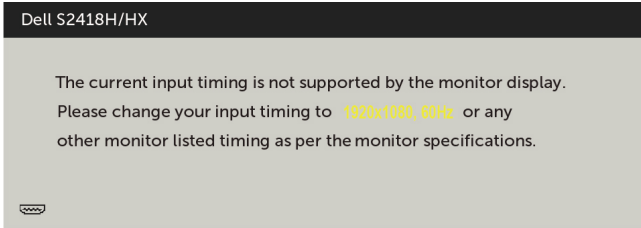
NOTE: This monitor has a built-in feature to automatically calibrate the brightness to compensate for LED aging.

OSD Warning Messages

When the **Dynamic Contrast** feature is enabled (in these preset modes: **Game** or **Movie**), manual brightness adjustment is disabled.

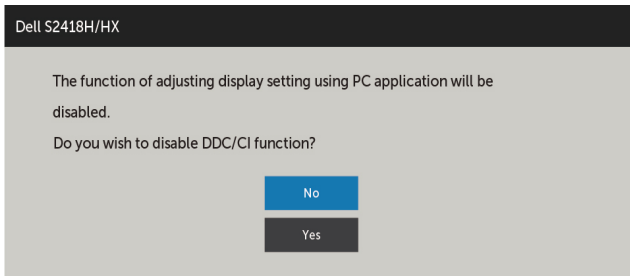


When the monitor does not support a particular resolution mode, you can see the following message:

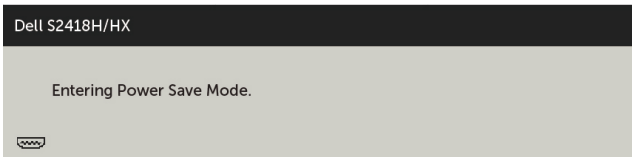


This means that the monitor cannot synchronize with the signal that it is receiving from the computer. See [Monitor Specifications](#) for the Horizontal and Vertical frequency ranges addressable by this monitor. Recommended mode is 1920 x 1080.

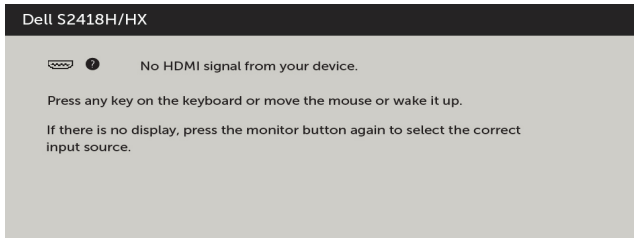
You can see the following message before the DDC/CI function is disabled:



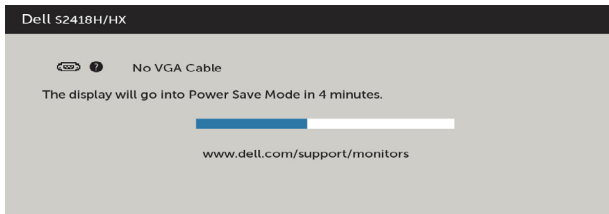
When the monitor enters the **Power Save** mode, the following message appears:



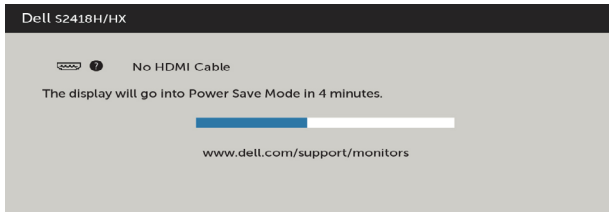
Activate the computer and wake up the monitor to gain access to the [OSD](#).
If you press any button other than the power button, the following messages will appear depending on the selected input:



If either VGA, HDMI input is selected and the corresponding cable is not connected, a floating dialog box as shown below appears.



or



See [Troubleshooting](#) for more information.

Troubleshooting

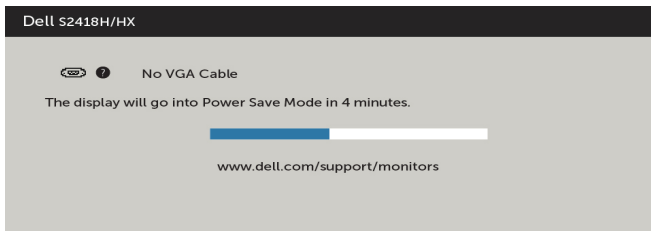
⚠ WARNING: Before you begin any of the procedures in this section, follow the [Safety Instructions](#).

Self-Test

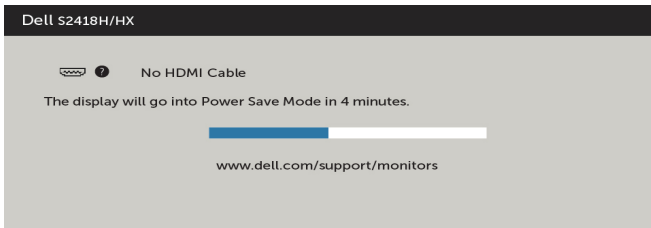
Your monitor provides a self-test feature that allows you to check whether your monitor is functioning properly. If your monitor and computer are properly connected but the monitor screen remains dark, run the monitor self-test by performing the following steps:

- 1 Turn off both your computer and the monitor.
- 2 Unplug the video cable from the back of the computer. To ensure proper Self-Test operation, remove all digital and the analog cables from the back of computer.
- 3 Turn on the monitor.

The floating dialog box should appear on-screen (against a black background), if the monitor cannot sense a video signal and is working correctly. While in self-test mode, the power LED remains white. Also, depending upon the selected input, one of the dialogs shown below will continuously scroll through the screen.



or




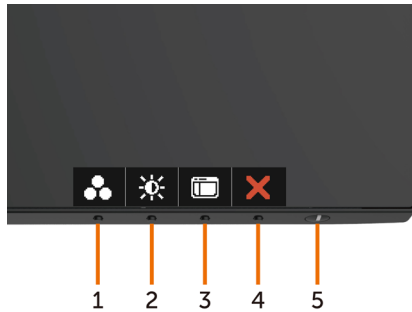
- 4 This box also appears during normal system operation, if the video cable becomes disconnected or damaged.
- 5 Turn off your monitor and reconnect the video cable; then turn on both your computer and the monitor.

If your monitor screen remains blank after you use the previous procedure, check your video controller and computer, because your monitor is functioning properly.

Built-in Diagnostics

Your monitor has a built-in diagnostic tool that helps you determine if the screen abnormality you are experiencing is an inherent problem with your monitor, or with your computer and video card.

 **NOTE:** You can run the built-in diagnostics only when the video cable is unplugged and the monitor is in self-test mode.



To run the built-in diagnostics:


- 1 Make sure that the screen is clean (no dust particles on the surface of the screen).
- 2 Unplug the video cable(s) from the back of the computer or monitor. The monitor then goes into the self-test mode.
- 3 Press and hold **Button 1** for 5 seconds. A gray screen appears.
- 4 Carefully inspect the screen for abnormalities.
- 5 Press **Button 1** on the front panel again. The color of the screen changes to red.
- 6 Inspect the display for any abnormalities.
- 7 Repeat steps 5 and 6 to inspect the display in green, blue, black, white, and text screens.


The test is complete when the text screen appears. To exit, press **Button 1** again. If you do not detect any screen abnormalities upon using the built-in diagnostic tool, the monitor is functioning properly. Check the video card and computer.

Speaker Quick Troubleshooting Guide

A Symptoms:

- Speaker has No Sound

 **NOTE:** mini DIN Cable should be plugged into mini DIN connector of Dell Monitor.

 **NOTE:** OSD audio input source setting is properly selected.

Troubleshooting Guide:

- 1 Checking for mini DIN cable and speaker set-up.
 - i Check the mini DIN plug pins are not damaged.
 - ii Check if the speaker is properly set-up. Proceed to [Setting Up your Speaker](#).

- 2 The Speaker is connected to the Dell Monitor but no sound is coming out. Go to the Link [Playback Default Setting](#).
 - i Make sure that the audio source player is playing music.
 - ii Check the computer volume and media player volume level is at desirable level and not muted. Go to the Link [Volume Controls Setting](#).
 - iii Check the playback default setting on the computer, and ensure the default device is set.

- 3 Audio source playing music but no sound is coming out of the speakers.
 - i Press the Volume + button to increase the volume.
 - ii Check that the computer volume is not 0% by doing the following steps [Volume Controls Setting](#).
 - i Click the speaker icon.
 - ii Adjust the volume level on the volume bar.

- 4 Set the Volume control options by doing the following steps. [Volume Controls Setting](#).
 - i Right click the speaker icon.
 - ii Select the volume control options.
 - iii Click the box: All devices currently playing sound.

B Symptom:

- Abnormal Sound (Distorted or Buzzing)

Troubleshooting Guide:

- 1 Abnormal sound coming out of the speaker. Go to the Link [Setting Up your Speaker](#).
 - i Ensure that the mini DIN jack is properly inserted or not loose.
 - ii Unplug and plug the mini DIN cable to make sure it is fully seated.

- iii Try to adjust the volume level Up and Down. Go to the Link [Volume Controls Setting](#).
- iv Observe if the abnormal noise will change along side with the volume level.
- v Check if the speaker is properly seated on the monitor stand.

C Symptom:

- Low sound output level

Troubleshooting Guide:

- 1 Audio source volume level is high. Go to the Link [Volume Controls Setting](#).
 - i Press the Volume + button to increase the volume.

D Symptom:

- Unbalanced sound from the speakers

Troubleshooting Guide:

Check the computer Volume Balance setting by doing the following steps:
[Volume Controls Setting](#).

- i Right Click the speaker icon.
- ii Select Playback devices.
- iii Right Click Default Playback devices and select Properties.
- iv Select Levels and click Balance. The L and R value must be the same.

Common Problems

The following table contains general information about common monitor problems you might encounter and the possible solutions:

Common Symptoms	What You Experience	Possible Solutions
No Video/Power LED off	No picture	<ul style="list-style-type: none">• Ensure that the video cable connecting the monitor and the computer is properly connected and secure.• Verify that the power outlet is functioning properly using any other electrical equipment.• Ensure that the power button is depressed fully.• Ensure that the correct input source is selected in the Input Source menu.
No Video/Power LED on	No picture or no brightness	<ul style="list-style-type: none">• Increase brightness & contrast controls via OSD.• Perform monitor self-test feature check.• Check for bent or broken pins in the video cable connector.• Run the built-in diagnostics.• Ensure that the correct input source is selected in the Input Source menu.
Missing Pixels	LCD screen has spots	<ul style="list-style-type: none">• Cycle power on-off.• Pixel that is permanently off is a natural defect that can occur in LCD technology.• For more information on Dell Monitor Quality and Pixel Policy, see Dell Support site at: http://www.dell.com/support/monitors.
Stuck-on Pixels	LCD screen has bright spots	<ul style="list-style-type: none">• Cycle power On-Off.• Pixel that is permanently off is a natural defect that can occur in LCD technology.• For more information on Dell Monitor Quality and Pixel Policy, see Dell Support site at: http://www.dell.com/support/monitors.
Brightness Problems	Picture too dim or too bright	<ul style="list-style-type: none">• Reset the monitor to factory settings.• Adjust brightness & contrast controls via OSD.
Safety Related Issues	Visible signs of smoke or sparks	<ul style="list-style-type: none">• Do not perform any troubleshooting steps.• Contact Dell immediately.
Intermittent Problems	Monitor malfunctions on & off	<ul style="list-style-type: none">• Ensure that the video cable connecting the monitor to the computer is connected properly and is secure.• Reset the monitor to factory settings.• Perform monitor self-test feature check to determine if the intermittent problem occurs in self-test mode.

Common Symptoms	What You Experience	Possible Solutions
Missing Color	Picture missing color	<ul style="list-style-type: none"> • Perform monitor self-test. • Ensure that the video cable connecting the monitor to the computer is connected properly and is secure. • Check for bent or broken pins in the video cable connector.
Wrong Color	Picture color not good	<ul style="list-style-type: none"> • Change the settings of the Preset Modes in the Color menu OSD depending on the application. • Adjust R/G/B value under Custom. Color in Color menu OSD. • Change the Input Color Format to PC RGB or YPbPr in the Color menu OSD. • Run the built-in diagnostics.
Image retention from a static image left on the monitor for a long period of time	Faint shadow from the static image displayed appears on the screen	<ul style="list-style-type: none"> • Use the Power Management feature to turn off the monitor at all times when not in use (for more information, see Power Management Modes). • Alternatively, use a dynamically changing screensaver.


Product Specific Problems

Specific Symptoms	What You Experience	Possible Solutions
Screen image is too small	Image is centered on screen, but does not fill entire viewing area	<ul style="list-style-type: none"> • Check the Aspect Ratio setting in the Display menu OSD. • Reset the monitor to factory settings.
Cannot adjust the monitor with the buttons on the front panel	OSD does not appear on the screen	<ul style="list-style-type: none"> • Turn off the monitor, unplug the monitor power cable, plug it back, and then turn on the monitor. • Check whether the OSD menu is locked. If yes, press and hold the button beside the power button for 6 seconds to unlock (for more information, see Lock).
No Input Signal when user controls are pressed	No picture, the LED light is white	<ul style="list-style-type: none"> • Check the signal source. Ensure the computer is not in the power saving mode by moving the mouse or pressing any key on the keyboard. • Check whether the signal cable is plugged in properly. Re-plug the signal cable if necessary. • Reset the computer or video player.
The picture does not fill the entire screen	The picture cannot fill the height or width of the screen	<ul style="list-style-type: none"> • Due to different video formats (aspect ratio) of DVDs, the monitor may display in full screen. • Run the built-in diagnostics.

Appendix

Safety Instructions

For displays with glossy bezels the user should consider the placement of the display as the bezel may cause disturbing reflections from surrounding light and bright surfaces.


 **WARNING: Use of controls, adjustments, or procedures other than those specified in this documentation may result in exposure to shock, electrical hazards, and/or mechanical hazards.**

For information on safety instructions, see the Safety, Environmental, and Regulatory Information (SERI).

FCC Notices (U.S. only) and Other Regulatory Information

For FCC notices and other regulatory information, see the regulatory compliance website located at www.dell.com/regulatory_compliance.

Contacting Dell

 **NOTE:** If you do not have an active Internet connection, you can find contact information on your purchase invoice, packing slip, bill, or Dell product catalog.

Dell provides several online and telephone-based support and service options. Availability varies by country and product, and some services may not be available in your area.


To get online Monitor support content:

See www.dell.com/support/monitors.

To contact Dell for sales, technical support, or customer service issues:

- 1 Go to www.dell.com/support.
- 2 Verify your country or region in the Choose A Country/Region drop-down menu at the top-left corner of the page.
- 3 Click **Contact Us** next to the country dropdown.
- 4 Select the appropriate service or support link based on your need.
- 5 Choose the method of contacting Dell that is convenient for you.

Setting Up Your Monitor

 **NOTE:** The maximum input resolution to **3840 x 2160** while you select movie HDR or game HDR in Color on OSD functions can be supported.

Setting Display Resolution to 1920 x 1080

For best performance, set the display resolution to 1920 x 1080 pixels by performing the following steps:

In Windows Vista, Windows 7, Windows 8 or Windows 8.1:

- 1 For Windows 8 or Windows 8.1 only, select the Desktop tile to switch to classic desktop.
- 2 Right-click on the desktop and click **Screen Resolution**.
- 3 Click the Dropdown list of the Screen Resolution and select 1920 x 1080.
- 4 Click **OK**.


In Windows 10:

- 1 Right-click on the desktop and click **Display Settings**.
- 2 Click **Advanced display settings**.
- 3 Click the dropdown list of **Resolution** and select 1920 x 1080.
- 4 Click **Apply**.

If you do not see the recommended resolution as an option, you may need to update your graphics driver. Please choose the scenario below that best describes the computer system you are using, and follow the given steps.

Dell computer

- 1 Go to www.dell.com/support, enter your service tag, and download the latest driver for your graphics card.
- 2 After installing the drivers for your graphics adapter, attempt to set the resolution to 1920 x 1080 again.

 **NOTE:** If you are unable to set the resolution to 1920 x 1080, please contact Dell to inquire about a graphics adapter that supports these resolutions.

Non-Dell computer

In Windows Vista, Windows 7, Windows 8 or Windows 8.1:

- 1 For Windows 8 or Windows 8.1 only, select the Desktop tile to switch to classic desktop.
- 2 Right-click on the desktop and click **Personalization**.
- 3 Click **Change Display Settings**.
- 4 Click **Advanced Settings**.
- 5 Identify your graphics controller supplier from the description at the top of the window (e.g. NVIDIA, ATI, Intel etc.).
- 6 Refer to the graphic card provider website for updated driver (for example, <http://www.ATI.com> or <http://www.NVIDIA.com>).
- 7 After installing the drivers for your graphics adapter, attempt to set the resolution to **1920 x 1080** again.

In Windows 10:

- 1 Right-click on the desktop and click **Display Settings**.
- 2 Click **Advanced display settings**.
- 3 Click **Display adapter properties**.
- 4 Identify your graphics controller supplier from the description at the top of the window (e.g. NVIDIA, ATI, Intel etc.).
- 5 Refer to the graphic card provider website for updated driver (for example, <http://www.ATI.com> or <http://www.NVIDIA.com>).
- 6 After installing the drivers for your graphics adapter, attempt to set the resolution to 1920 x 1080 again.



NOTE: If you are unable to set the recommended resolution, please contact the manufacturer of your computer or consider purchasing a graphics adapter that supports the video resolution.

Maintenance Guidelines

Cleaning Your Monitor



WARNING: Before cleaning the monitor, unplug the monitor power cable from the electrical outlet.



CAUTION: Read and follow the [Safety Instructions](#) before cleaning the monitor.

For best practices, follow these instructions in the list below while unpacking, cleaning, or handling your monitor:

- To clean your anti-static screen, lightly dampen a soft, clean cloth with water. If possible, use a special screen-cleaning tissue or solution suitable for the anti-static coating. Do not use benzene, thinner, ammonia, abrasive cleaners, or compressed air.
- Use a lightly-dampened, soft cloth to clean the monitor. Avoid using detergent of any kind as some detergents leave a milky film on the monitor.
- If you notice white powder when you unpack your monitor, wipe it off with a cloth.
- Handle your monitor with care as a darker-colored monitor may get scratched and show white scuff marks more than a lighter-colored monitor.
- To help maintain the best image quality on your monitor, use a dynamically changing screen saver and turn off your monitor when not in use.