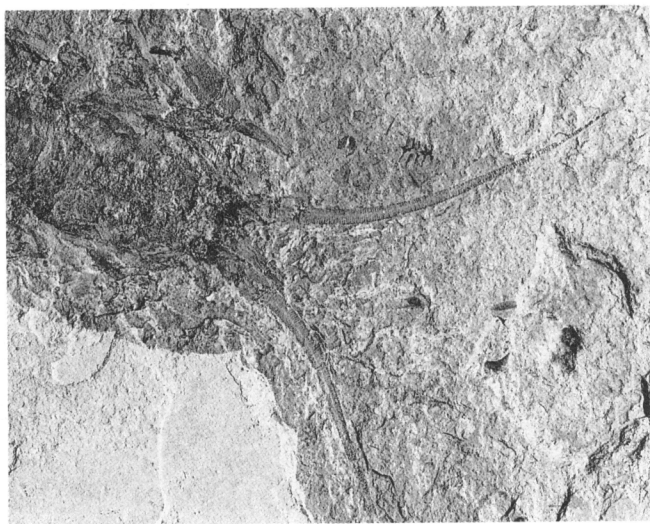
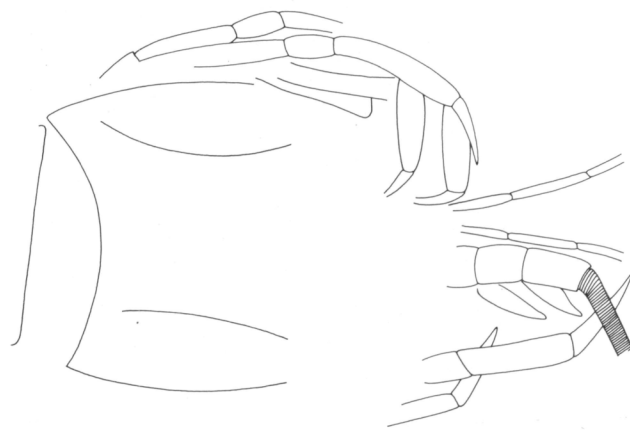
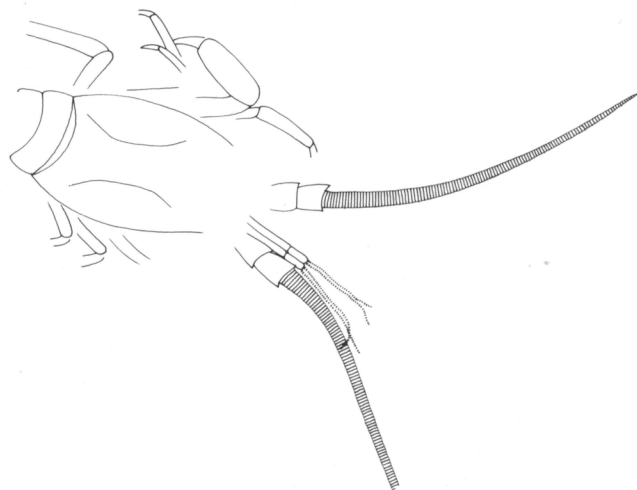




1



2



3

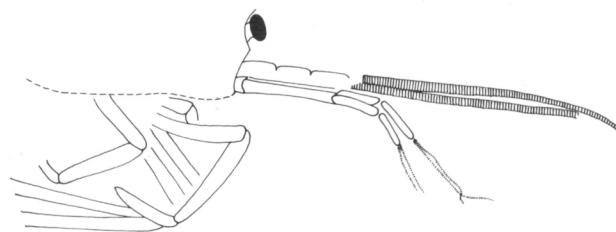


Plate XIII - 1) *Palinurus* sp., n.cat. MSNM i12179, photo and reconstruction (x 0.75); 2) *Palinurus* sp., n.cat. MSNM i6045, photo and reconstruction (x 0.4); 3) *Palinurus* sp., n.cat. MSNM i12635, photo and reconstruction (x 0.4).

Notes to Authors

Typescripts

Papers for publication should be sent to the Editorial Office, which reserves the right to accept them or not after submitting them to the journal's international referees.

Contributions in English, French and Italian are accepted, but English is preferred.

Typescripts, with double spacing on one side only of A4 paper, must be sent in duplicate, preceded by a summary in English and, optionally, a summary in the author's original language.

Words and phrases to be printed in italics should be underlined.

Typescripts should be complete with captions for tables and figures.

Illustrations

The journal will carry figures in the text, and plates.

Figures in the text shall be numbered serially with Arabic numerals. Their position must be indicated on the typescript in the page margin. They must be produced camera ready, so that they can be reduced to a base size of 18 cm or 8.5 cm, with a maximum height of 25.4 cm.

Plates must have an 18 cm base with a height of 25.4 cm and shall be numbered serially with Roman numerals.

Photographic illustrations may be supplied either as slides or as black and white prints; in either case they will be printed in black and white in the journal.

Authors are responsible for providing and composing figures. The originals, mounted on card, shall be natural size or enlarged one and a half times.

The Editorial Office will only accept original photographs and drawings: photocopies are unacceptable.

Authors are asked to take the utmost care with illustrations: poorly executed photographs and drawings will not be accepted.

The Editorial Office reserves the right to rearrange figures and plates if necessary.

References

In listing references, authors should observe the following layout:

EMMONS L. H., GAUTIER-HION A. & DUBOST G., 1983 - Community structure of the frugivorous-folivorous forest mammals of Gabon. *Journal of Zoology*, London, 199: 209-222.

References should include only works referred to in the text. Text references should be made by quoting the name/s of the author/s followed by the date of publication: e.g. Pinna and Nosotti (1989) or (Pinna and Nosotti, 1989). No other forms of reference are acceptable.

The volumes of *Paleontologia Lombarda* are on sale in the bookshop of the
Museo di Storia Naturale di Milano
They can also be purchased writing to the secretariat of the
Società Italiana di Scienze Naturali, Corso Venezia 55 - 20121 Milano (Italy)