


Doing Business Since 1983



CHEMICAL CONTAINERS, INC.



Tank & Accessory Catalog

"Your Specialists In Liquid Handling Products"

P.O. Box 1307 · Lake Wales, Florida 33859
Local: (863) 638-1407 · Fax: (863) 638-1863

Nationwide - 1-800-346-7867

www.chemicalcontainers.com

The Chemical Containers Organization



Chemical Containers, Inc. is the largest and most diverse distributor in the South Eastern United States for all your liquid handling product needs. We stock a complete line of liquid storage and holding tanks made from top quality high density polyethylene for agricultural and industrial use.

Sales. Our sales staff is renowned for their innovative problem-solving capabilities.... whether providing start-up help for new projects, resolving existing problems, or making recommendations to help save future dollars... our sales staff are technical professionals in the liquid handling industry. For information about chemical compatibility or answers to your questions, just call us TOLL FREE NATIONWIDE: 1-800-346-7867, local, (863) 638-1407 or use our FAX: (863) 638-1863.

Parts Department. Stop by for over-the-counter pick-up of your parts or phone in your order. We stock a tremendous inventory, owever, hard-to-find items or items not frequently requested are available by special order. All our tanks are backed by a 1, 3 or 5 year warranty.

Delivery. We provide immediate delivery for most items in stock, and some items are drop shipped direct from the manufacturer. Our delivery fleet provides extra help with many larger products. Shipping with Federal Express, UPS, Contract and Common Carriers can be arranged upon request.

Custom Design. Design, fabrication, and repair capabilities are some of the extra services we offer. Our sales and service personnel will work with you to produce customized products to meet your special needs.

Service Department. Emergency help, weekend troubleshooting, polyethylene welding, service and repair in the field or in the shop.

CHEMICAL CONTAINERS, INC. Whether you need to store, pump, transport, mix or contain liquids, we'll help you get the job done. Call us TOLL FREE NATIONWIDE: 1-800-346-7867.

Chemical Containers, Inc. - Your specialists in liquid handling products.

Product pricing and specifications in this catalog are believed to be accurate at the time of publication. Chemical Containers does however, reserve the right to override information deemed to be in error.



Contents

Vertical Storage Tanks	4 - 5
Cone Bottom Tanks.....	6 - 7
Double Wall & Containment Basins	8
Septic, Cistern, & Elliptical Tanks.....	9
Horizontal Tanks	10 - 11
Polyethylene Pest Control, Transport & Loaf Tanks	12
Specialty, Total Drain, Open Top Cylindrical & Spot Sprayer Tanks	13
Tank Accessories.....	14 - 15
Couplers, Adapters and Strainers	16
Polypropylene Ball Valves	17
CPP Fittings and Adapters	18
Polyethylene Tank Facts	19

Vertical Storage Tanks

Dome Top

Vertical polyethylene storage tanks are designed for handling bulk quantities of water and chemicals. While being resilient to ranging temperatures and weather, tanks can be deployed in either interior or exterior applications for liquid containment.



Dome Top Vertical Tanks

Part #	Gallons	Diameter	Height	Fill	Price
T1004A	10	12"	25"	8"	\$112.00
T1007A	20	16"	28"	8"	\$161.00
T1006N	22	20"	20"	8"	\$161.00
T1008N	25	18"	29"	5"	\$148.00
T1009A	40	18"	43"	5"	\$170.00
T1011N	45	20"	37"	5"	\$184.00
T1010N	50	18"	53"	5"	\$230.00
T1011A	55	20"	47"	5"	\$215.00
T1012A	65	23"	42"	5"	\$247.00
T1012N	65	23"	43"	8"	\$263.00
T1014A	75	23"	50"	7"	\$266.00
T1016D	100	31"	37"	8"	\$423.00
T1018A	100	28"	45"	7"	\$357.00
T1018N	100	28"	43"	8"	\$371.00
T1020N	105	23"	63"	8"	\$392.00
T1024N	120	38"	31"	5"	\$425.00
T1026A	135	23"	82"	16"	\$440.00
T1026N	150	30"	56"	8"	\$495.00
T1028D	165	31"	57"	8"	\$450.00
T1028N	165	31"	56"	16"	\$501.00
T1030N	200	30"	72"	8"	\$599.00
T1032N	210	32"	67"	16"	\$617.00
T1040N	220	42"	44"	5"	\$545.00
T1046N	250	30"	89"	8"	\$706.00
T1048A	300	42"	55"	8"	\$678.00
T1048N	300	35"	79"	16"	\$796.00
T1052N	305	46"	50"	16"	\$717.00
T1058A	425	42"	75"	8"	\$881.00
T1059P	450	46"	73"	8"	\$1,105.00
T1060N	500	48"	73"	16"	\$1,057.00
T1068A	550	52"	66"	8"	\$1,014.00
T1068N	550	67"	44"	16"	\$1,056.00
T1070A	625	64"	50"	8"	\$943.00
T1072N	750	48"	103"	16"	\$1,574.00
T1076A	850	54"	94"	16"	\$1,512.00
T1076N	850	48"	118"	16"	\$1,705.00
T1086A	900	46"	132"	16"	\$1,755.00

Dome Top Vertical Tanks Cont.

Part #	Gallons	Diameter	Height	Fill	Price
T1088N	1000	64"	80"	16"	\$2,033.00
T1092A	1050	86"	54"	16"	\$1,608.00
T1096N	1100	87"	53"	16"	\$1,706.00
T1100A	1200	64"	97"	16"	\$2,160.00
T1100D	1200	76"	68"	16"	\$2,010.00
T1104N	1500	64"	116"	16"	\$2,810.00
T1108N	1550	87"	67"	16"	\$2,038.00
T1112A	1650	86"	74"	16"	\$2,194.00
T1114N	1700	87"	74"	16"	\$2,276.00
T1116A	2000	91"	84"	16"	\$2,921.00
T1120N	2000	64"	152"	16"	\$3,988.00
T1124N	2100	87"	89"	16"	\$3,071.00
T1125A	2150	102"	71"	16"	\$3,294.00
T1128A	2500	91"	103"	16"	\$3,394.00
T1128N	2500	95"	91"	16"	\$3,519.00
T1132A	3000	91"	120"	16"	\$4,098.00
T1132N	3000	95"	109"	16"	\$4,325.00
T1133A	3100	102"	103"	16"	\$4,357.00
T1136A	4000	96"	140"	16"	\$6,504.00
T1136N	4000	102"	125"	16"	\$7,011.00
T1138N	4200	102"	131"	16"	\$7,051.00
T1140N	5000	102"	152"	16"	\$9,481.00
T1144N	5500	138"	92"	16"	\$8,867.00
T1148N	6000	102"	182"	16"	\$11,579.00
T1152N	6100	119"	140"	16"	\$10,782.00
T1156N	6500	120"	149"	16"	\$11,223.00
T1156O	6502	102"	196"	16"	\$12,701.00
T1158A	7000	142"	125"	16"	\$11,660.00
T1158N	7800	119"	176"	16"	\$14,707.00
T1159N	8400	120"	187"	16"	\$15,672.00
T1160N	9000	141"	146"	22"	\$16,767.00
T1164N	10000	141"	160"	22"	\$18,678.00
T1165A	10500	142"	177"	16"	\$17,878.00
T1166N	10500	130"	202"	22"	\$20,960.00
T1165N	11000	144"	167"	22"	\$20,960.00
T1168N	13000	144"	198"	22"	\$26,618.00
T1170N	15000	165"	186"	22"	\$38,318.00
T1175N	20000	165"	242"	22"	\$48,463.00

Call to ask about color availability, or heavy duty tanks.
 Prices include shipping to Lake Wales, FL. **Discounts and special pricing available.**

Vertical Storage Tanks

Flat Top & Water Only



Flat Top Vertical Tanks

Part #	Gallons	Diameter	Height	Fill	Price
T1005N	20	16"	28"	8"	\$166.00
T1011AF	55	23"	38"	8"	\$239.00
T1012D	65	23"	43"	8"	\$363.00
T1018AF	100	23"	64"	7"	\$357.00
T1024AA	130	32"	46"	8"	\$435.00
T1027A	160	28"	68"	8"	\$505.00
T1029A	175	31"	61"	8"	\$469.00
T1047A	265	31"	88"	8"	\$685.00
T1056R	330	46"	51"	16"	\$803.00
T1060A	500	46"	77"	8"	\$1,007.00
T1064R	550	46"	79"	16"	\$1,174.00
T1071D	650	56"	71"	16"	\$1,333.00
T1075AHD	800	46"	118"	16"	\$1,664.00
T1076A	850	54"	94"	8"	\$1,512.00
T1112R	1650	86"	78"	16"	\$2,401.00
T1128D	2500	94.5"	92"	16"	\$3,162.00

Water Only Vertical Tanks

Part #	Gallons	Diameter	Height	Fill	Price
T1096NWTB	1100	87"	53"	16"	\$1,511.00
T1124NWTB	2100	87"	89"	16"	\$2,435.00
T1128NWTB	2500	95"	91"	16"	\$2,989.00
T1129N	3000	95"	109"	16"	\$3,159.00
T1132NWTB	3000	102"	93"	16"	\$3,536.00
T1140NWTB	5000	102"	152"	16"	\$7,011.00
T1164NWOB	10000	141"	159"	22"	\$16,818.00



Vertical polyethylene water and chemical storage tanks out-perform the more expensive, traditional water storage systems like aluminum, steel, carbon steel fiberglass, for a variety of reasons; because our tanks are rotationally molded, they are seamless and water tight, they will never rust or corrode and are nearly indestructible, made of 100% virgin resin listed by the

FDA for potable water storage, our polyethylene water tanks contain no colorants. All are efficiently lightweight for easy transportation and installation.

Common Fittings

Bulkhead fittings

Part #	Size	Thread	Material	Price
TA1199	1/2"	FPT x FPT	Polypropylene	\$10.00
TA1200	3/4"	FPT x FPT	Polypropylene	\$11.00
TA1201	1"	FPT x FPT	Polypropylene	\$13.00
TA1203	1 1/4"	FPT x FPT	Polypropylene	\$11.00
TA1205	1 1/2"	FPT x FPT	Polypropylene	\$14.00
TA1206	2"	FPT x FPT	Polypropylene	\$13.00
TA1207	2"	FPT x FPT	Heavy Duty	\$22.00
TA1209	3"	FPT x FPT	Polypropylene	\$42.00

Bolted fittings

Part #	Size	Thread	Material	Price
BBF075	3/4"	FPT x FPT	Polypropylene	\$64.87
BBF100	1"	FPT x FPT	Polypropylene	\$64.87
BBF150	1 1/2"	FPT x FPT	Polypropylene	\$53.21
BBF200	2"	FPT x FPT	Polypropylene	\$44.34
BBF300	3"	FPT x FPT	Polypropylene	\$79.15

Polypropylene Ball Valves

Part #	Size	Thread	Material	Price
BV100	1"	FPT	Polypropylene	\$44.24
BV125	1 1/4"	FPT	Polypropylene	\$48.77
BV150	1 1/2"	FPT	Polypropylene	\$62.70
BV200	2"	FPT	Polypropylene	\$62.70
BV300	3"	FPT	Polypropylene	\$142.13

See Many More
Tank Accessories
on pages 14-15

Cone Bottom Tanks

Closed Top & Mini Bulk

These one piece tanks are molded from rugged high density polyethylene. They feature conical bottoms for quick and complete drainage. Designed for either indoor or outdoor service.

Cone Bottom Mini-Bulk Tanks

These polyethylene tanks come with bases that allow stacking up to three high fully loaded. Forklift pockets are built in for easy loading/unloading. Both size tanks have 6" fill lids and bottom discharge.



Cone Bottom Mini-Bulk Tanks

Part #	Gallons	Diameter	Height	Price
T2026R*	110	45"	38"	\$1,021.00
T2038R*	220	45"	54"	\$1,236.00



Cone bottom tanks with steel stands.

Steel stands can be modified to suit custom applications.

Inductor Tanks

These tanks are suitable for mixing chemicals when filling a larger tank or used as supply tanks for application systems.

Inductor Tanks

Part #	Gallons	Diameter	Height	Fill	Price	Stand	Total Height / Clearance	Price w/ Stand
T2004A	15	19"	24"	8"	\$149.00	ST6308	36" / 12"	\$399.00
T2004N	15	19"	23"	8"	\$159.00	ST6308	35" / 12"	\$409.00
T2006A	15	19"	27"	12"	\$149.00	ST6308	39" / 12"	\$399.00
T2007A	30	24"	30"	12"	\$195.00	ST6309AS	42" / 12"	\$317.00
T2008A*	35	24"	49"	12"	\$328.00		49" / 13"	INCLUDED
T2008N	35	23"	29"	8"	\$190.00	ST6309	38" / 9"	\$490.00
T2009A	40	30"	34"	12"	\$274.00	ST6309C	49" / 15"	\$492.00
T2015A	55	24"	42"	12"	\$251.00	ST6309AS	54" / 12"	\$373.00
T2015A*	60	24"	62"	12"	\$385.00		62" / 13"	INCLUDED
T2015N	60	31"	32"	16"	\$279.00	ST6309B	44" / 12"	\$731.00
T2020O	80	32"	37"	10"	\$387.00	ST6309N	52" / 15"	\$1,455.00
T2021A	85	30"	43"	12"	\$365.00	ST6309C	58" / 15"	\$583.00
T2025A	110	30"	51"	12"	\$432.00	ST6309C	66" / 15"	\$650.00

Items in red include Polyethylene stand.



Cone bottom tank with polyethylene stand.

Closed Top Cone Bottom Tanks

Part #	Gal.	Deg.	Dia.	Height	Fill	Price	Stand	Total Height / Clearance	Price w/ Stand
T2010A*	55	15°	23"	39"	8"	\$725.00		60" / 20"	INCLUDED
T2024A*	100	15°	23"	65"	8"	\$789.00		86" / 20"	INCLUDED
T2028N*	125	15°	48"	40"	8"	\$795.00		40" / 12"	INCLUDED
T2030A	150	45°	36"	51"	12"	\$545.00	ST6311AC	65" / 14"	\$920.00
T2032N*	175	30°	42"	49"	16"	\$1,088.00		49" / 10"	INCLUDED
T2037A	200	45°	42"	55"	12"	\$671.00	ST6309S	68" / 13"	\$1,123.00
T2040D	250	45°	47"	51"	16"	\$1,108.00	ST6311	64" / 13"	\$2,979.00
T2044A	300	45°	42"	67"	16"	\$847.00	ST6309S	80" / 13"	\$1,299.00
T2044N*	300	30°	49"	61"	16"	\$1,608.00		61" / 9"	INCLUDED
T2045N*	310	30°	43"	72"	8"	\$1,331.00		72" / 9"	INCLUDED
T2047A	350	45°	42"	81"	12"	\$961.00	ST6309S	94" / 13"	\$1,413.00
T2048D	400	45°	47"	72"	16"	\$1,215.00	ST6311	85" / 13"	\$3,086.00
T2052A	500	45°	52"	81"	12"	\$1,072.00	ST6311AS	94" / 13"	\$1,787.00
T2052N*	500	30°	49"	87"	16"	\$2,079.00		87" / 9"	INCLUDED
T2062N*	750	20°	73"	67"	16"	\$2,839.00		67" / 11"	INCLUDED
T2067A	1000	45°	64"	98"	16"	\$1,912.00	ST6309A	112" / 14"	\$3,066.00
T2068N*	1050	20°	73"	86"	16"	\$3,142.00		86" / 11"	INCLUDED
T2070A	1490	45°	64"	132"	16"	\$2,576.00	ST6309A	146" / 14"	\$3,730.00
T2074N*	1600	30°	89"	96"	16"	\$4,505.00		96" / 11"	INCLUDED
T2080N	2500	30°	96"	105"	16"	\$3,820.00	ST6310	116" / 11"	\$8,108.00
T2082N*	2500	30°	99"	116"	16"	\$6,547.00		116" / 10"	INCLUDED
T2086N	3000	30°	96"	123"	16"	\$4,439.00	ST6310	134" / 11"	\$8,727.00
T2086N*	3000	30°	99"	134"	16"	\$7,166.00		134" / 10"	INCLUDED
T2087N	3000	15°	91"	120"	16"	\$4,695.00	-	-	-
T2089A	4900	15°	102"	159"	16"	\$9,022.00	ST6314A	170" / 11"	\$11,166.00
T2090N	5500	30°	119"	148"	16"	\$11,823.00	ST6315	160" / 12"	\$19,278.00
T2092N	6000	15°	102"	195"	16"	\$12,255.00	ST6317	207" / 12"	\$17,753.00
T2094N	7500	30°	141"	148"	16"	\$15,683.00	ST6318	175" / 27"	\$24,007.00
T2100N	10000	30°	141"	190"	16"	\$20,531.00	ST6321	217" / 27"	\$28,855.00
T2101N	10000	15°	142"	173"	16"	\$19,493.00	ST6324	184" / 11"	\$28,926.00

Cone Bottom Tanks

Open Top and Mix Tanks

Heavy walled tanks designed to withstand rugged service. Open top for convenient mixing and filling, self supporting, translucent-visible content level, FDA approved material. Optional steel stands with corrosion resistant coating, or stainless steel, constructed stands are available. Lids for tanks are sold separately.



55 Gallon cone bottom tank with custom stand, mixer bracket, 3/4 H.P. mixer, & chemical feed pump

Open Top Cone Bottom Tanks

Part #	Gallons	Diameter	Height	Price	Stand	Total Height / Clearance	Agitation Mount	Price w/ Stand
T2530C	55	22"	36"	\$385.00	ST6580	52" / 16"	YES	\$1,177.00
T2540C	100	30"	36"	\$826.00	ST6582	52" / 16"	YES	\$1,571.00
T2550A	145	36"	41"	\$491.00	ST6311AP	59" / 18"	NO	\$1,055.00
T2550U	147	31"	53"	\$1,370.00	ST6584	69" / 16"	YES	\$2,115.00
T2559A	200	36"	53"	\$512.00	ST6311AP	71" / 18"	NO	\$1,076.00
T2560A	250	36"	65"	\$672.00	ST6311AP	83" / 18"	NO	\$1,236.00
T2560C	250	42"	46"	\$1,521.00	ST6588	61" / 15"	YES	\$2,375.00
T2562A	325	36"	82"	\$787.00	ST6311AP	100" / 18"	NO	\$1,351.00
T2570C	500	52"	64"	\$3,580.00	ST6590	80" / 16"	YES	\$4,909.00
T2571A	840	91"	49"	\$1,642.00	ST6310AA	60" / 11"	NO	\$3,233.00
T2575A	1010	64"	99"	\$1,874.00	ST6309A	113" / 14"	NO	\$3,028.00
T2580A	1050	91"	57"	\$1,854.00	ST6310AA	68" / 11"	NO	\$3,445.00
T2585A	1150	91"	60"	\$1,990.00	ST6310AA	71" / 11"	NO	\$3,581.00
T2590A	1450	91"	79"	\$2,207.00	ST6312AA	92" / 13"	NO	\$4,193.00
T2595A	1500	64"	134"	\$2,573.00	ST6309A	148" / 14"	NO	\$3,727.00
T2600A	1710	86"	87"	\$2,410.00	ST6313A	98" / 11"	NO	\$3,967.00
T2620A	2350	91"	106"	\$3,307.00	ST6310AA	117" / 11"	NO	\$4,898.00
T2625A	2440	91"	117"	\$3,814.00	ST6312AA	130" / 13"	NO	\$5,800.00
T2630A	2610	86"	147"	\$3,882.00	ST6312A	158" / 11"	NO	\$5,852.00

Complete Mix Stations

Gallons	Diameter	Height	Price
35	26"	43"	\$885.00
55	26"	55"	\$1,415.00
100	22"	60"	\$1,819.00
147	33"	69"	\$2,296.00
250	44"	56"	\$2,396.00
500	55"	80"	\$3,496.00

Complete Cone Bottom Mix Tanks

With steel support stands, mixer support brackets and 115V mixer with 316 stainless steel shaft and propeller.

Vent Fittings

Part #	Size	Type	Material	Price
TA3272N	3"	With Screen	Polypropylene	\$29.75
BVC200	2"	Anti Vortex, Without Screen	Polypropylene	\$19.99
BVC230	2"	Anti Vortex, With Screen	Polypropylene	\$22.77
BVC300	3"	Anti Vortex, Without Screen	Polypropylene	\$31.54
BVC330	3"	Anti Vortex, With Screen	Polypropylene	\$38.50



BVC200
2" Anti Vortex Cap
Without Screen

Call to ask about color availability, or heavy duty tanks.
Prices include shipping to Lake Wales, FL. **Discounts and special pricing available.**

Double Wall & Containment Basins

Polyethylene fluid containment basins are designed as a secondary containment system. Based on chemical volume quantities, these systems will meet state and federal requirement for containment.

Made from 100% virgin resin, these vertical polyethylene tanks have double walls for extra strength and durability when storing water or liquid chemicals. Seamless and water tight as a result of being rotationally molded. The food grade material used to make this tank is approved by the FDA as safe to hold potable water.



Containment Basins Rectangle

Part #	Gallons	L x W	Height	Price
T6084A	100	55" x 31"	25"	\$207.00
T6088D	150	72" x 36"	12"	\$566.00
T6090A	150	75" x 31"	25"	\$348.00
T6092D	175	48" x 48"	18"	\$614.00
T6096D	240	48" x 65"	18"	\$853.00
T6103A	325	60" x 96"	24"	\$879.00
T6104D	350	68" x 68"	18"	\$1,115.00
T6109A	425	69" x 71"	25"	\$822.00
T6124A	690	108" x 72"	24"	\$1,206.00
T6124D	690	106" x 59"	26"	\$1,640.00
T6125P	700	96" x 72"	25"	\$2,835.00
T6128A	1150	73" x 73"	66"	\$2,017.00
T6136C	1150	73" x 73"	66"	\$4,784.00
T6141N	1300	175" x 97"	22"	\$2,136.00
T6140A	1650	84" x 84"	60"	\$2,616.00
T6161A	2075	96" x 96"	62"	\$3,735.00
T61695A	2275	96" x 96"	68"	\$4,714.00
T6176T	3500	218" x 108"	40"	\$12,266.00

Containment Basins Round

Part #	Gallons	Diameter	Height	Price
T6082D	90	43"	18"	\$398.00
T6112D	450	75"	31"	\$1,213.00
T6091A	610	96"	24"	\$750.00
T6116C	675	66"	46"	\$2,529.00
T6117C	675	82"	30"	\$2,477.00
T6127A	920	106"	29"	\$1,060.00
T6139A	1200	86"	54"	\$1,656.00
T6164NG	2000	139"	36"	\$3,448.00
T6169A	2200	91"	85"	\$3,005.00
T6170N	2800	102"	104"	\$4,715.00



Double Wall Storage Tanks

Part #	Gallons	Diameter	Height	Fill	Price
T7011PDBL	55	36"	29"	7"	\$1,109.00
T7012ADBL	65	28"	44"	16"	\$656.00
T7016PDBL	105	36"	42"	7"	\$1,719.00
T7020ADBL	120	36"	50"	16"	\$1,098.00
T7023ADBL	150	36"	60"	16"	\$1,276.00
T7024PDBL	160	36"	59"	7"	\$2,295.00
T7029ADBL	300	57"	45"	16"	\$1,910.00
T7029PDBL	405	48"	69"	7"	\$2,594.00
T7030PDBL	540	77"	48"	17"	\$5,692.00
T7030ADBL	550	57"	69"	16"	\$2,431.00
T7034ADBL	1000	77"	82"	16"	\$4,344.00
T7034PDBL	1000	77"	79"	17"	\$7,862.00
T7040ADBL	1500	77"	119"	16"	\$5,625.00
T7040PDBL	1550	96"	83"	17"	\$10,242.00
T7041ADBL	2000	102"	97"	16"	\$7,184.00
T7046ADBL	2500	102"	119"	16"	\$8,686.00
T7046PDBL	2500	96"	119"	19"	\$17,807.00
T7050PDBL	3150	122"	91"	24"	\$23,024.00
T7060PDBL	4400	123"	123"	24"	\$31,951.00
T7066PDBL	5400	143"	117"	24"	\$29,179.00
T7067ADBL	6000	120"	191"	16"	\$19,958.00
T7068ADBL	6500	120"	207"	16"	\$21,088.00
T7070PDBL	6650	122"	171"	24"	\$35,659.00
T7080PDBL	8700	143"	174"	24"	\$54,355.00

Common Fittings

Part #	Item Type	Size	Material	Price
BVSF200	Ball Valve	2"	Polypropylene	\$69.02
BV100	Ball Valve	1"	Polypropylene	\$44.24
BV150	Ball Valve	1 1/2"	Polypropylene	\$62.70
BV200	Ball Valve	2"	Polypropylene	\$62.70
BVSMT200	Ball Valve	2"	Polypropylene	\$69.02
B200CAP	Camlock Cap	2"	Polypropylene	\$21.83
TA1201	Ball Valve	1"	Polypropylene	\$13.00
TA1205	Ball Valve	1 1/2"	Polypropylene	\$14.00
TA1206	Ball Valve	2"	Polypropylene	\$13.00

Septic, Cistern, & Elliptical Tanks

Our below ground cisterns feature the same rugged, ribbed design found in our septic tanks. Cisterns are ideal for instances when drinking water must be hauled in, or when a well just doesn't meet consumption needs. Bulkhead fittings are available in full range of sizes to help adapt the cistern to suit specific needs or applications.

Polyethylene Septic Tanks

Part #	Gallons	Length	Width	Height	Height to Inlet	Height to Outlet	Price
T6020N	300	Sphere	54"	54"	44"	42"	\$1,197.00
T6026N	500	101"	51"	47"	36"	33"	\$1,646.00
T6036N	1000	102"	60"	63"	51"	48"	\$2,775.00
T6044N	1500	135"	55"	70"	59"	56"	\$4,275.00



Any septic tank can be transported to the job in a pickup truck and carried by two men. Contractors can pick up tank, pipe and fittings

in one trip, and install the tank on schedule because there's no waiting for the tank to be delivered. Because our polyethylene septic tanks are rotationally molded they are seamless and water tight with no joints or seams to leak.

Below Ground Cistern Tanks

Part #	Gallons	Length	Width	Height	Manhole Diameter	Price
T6046N	325	Sphere	54"	54"	20"	\$1,283.00
T6048N	600	101"	51"	47"	20"	\$2,169.00
T6050A	850	60"	70"	60"	24"	\$1,810.00
T6052N	1200	102"	60"	63"	20"	\$3,184.00
T6058N	1700	135"	55"	70"	20"	\$4,837.00
T6059N	2500	159"	99"	51"	20"	\$7,406.00
T6059A	2500	98"	158"	54"	24"	\$6,381.00



Elliptical Leg Tanks

This elliptical leg tank style is designed to provide the greatest capacity with the lowest center of gravity, making it the best design for transporting larger volumes. Elliptical tanks feature molded-in legs that act as "baffles" to reduce sloshing and provide increased stability during transport.

Polyethylene Elliptical Leg Tanks

Part #	Gallons	Width	Length	Height	Price	# of Bands	Band	Bands Price	Price w/ Bands
T3130N	335	48"	71"	33"	\$988.00	2	ST6124	\$228.00	\$1,216.00
T3140A	510	57"	80"	39"	\$1,275.00	2	ST6125A	\$343.00	\$1,618.00
T3140N	535	57"	80"	39"	\$1,404.00	2	ST6127	\$258.00	\$1,662.00
T3144N	1035	79"	89"	54"	\$2,333.00	3	ST6130	\$459.00	\$2,792.00
T3148N	1235	66"	128"	53"	\$3,358.00	4	ST6220	\$624.00	\$3,982.00
T3149N	1335	66"	126"	55"	\$3,563.00	4	ST6223	\$620.00	\$4,183.00
T3151A	1610	78"	139"	56"	\$4,419.00	4	ST6261A	\$600.00	\$5,019.00
T3152N	1635	71"	142"	58"	\$4,290.00	4	ST6260	\$644.00	\$4,934.00
T3154A	1850	78"	139"	63"	\$4,641.00	4	ST6266A	\$623.00	\$5,264.00
T3156N	2035	84"	142"	56"	\$5,548.00	4	ST6303	\$1,112.00	\$6,660.00
T3157A	2350	88"	146"	63"	\$6,704.00	4	ST6299A	\$1,126.00	\$7,830.00
T3160N	2635	90"	140"	72"	\$7,625.00	4	ST6301	\$1,432.00	\$9,057.00
T3163A	2750	88"	146"	70"	\$8,112.00	4	ST6305A	\$1,254.00	\$9,366.00
T3164N	3135	88"	150"	80"	\$8,933.00	4	ST6301A	\$1,556.00	\$10,489.00
T3166A	3250	88"	146"	79"	\$8,589.00	4	ST6306A	\$1,438.00	\$10,027.00
T3168N	4035	92"	192"	75"	\$13,846.00	4	ST6301B	\$1,640.00	\$15,486.00



Polyethylene Elliptical Tanks

Part #	Gallons	Width	Length	Height	Fill	Price	Skid	Total Height	Price w/ Skid
T8008N	200	40"	66"	30"	8"	\$746.00	ST6603	38"	\$1,514.00
T8012N	300	48"	70"	36"	8"	\$951.00	ST6605	44"	\$1,771.00
T8016N	500	57"	82"	44"	16"	\$1,365.00	ST6610	52"	\$2,553.00
T8020N	750	69"	88"	48"	16"	\$1,913.00	ST6615	56"	\$3,508.00
T8024N	1000	78"	90"	55"	16"	\$2,413.00	ST6620	63"	\$4,270.00
T8025N	1600	78"	138"	54"	16"	\$3,778.00	ST6631N	62"	\$8,155.00

Call to ask about color availability, or heavy duty tanks.
Prices include shipping to Lake Wales, FL. **Discounts and special pricing available.**

Horizontal Tanks

Leg Tanks & Bases



Horizontal Leg Tanks
Used primarily for transport and nursing applications, leg tanks feature molded-in legs that act as “baffles” to reduce sloshing.

Polyethylene Horizontal Leg Tanks

Part #	Gallons	Diameter	Length	Fill	Price	# of Bands	Band	Bands Price	Price w/ Bands
T3004A	35	18"	34"	5"	\$159.00	2 (set)	ST6010A	\$63.00	\$222.00
T3004N	35	20"	29"	5"	\$170.00	2	ST6010	\$33.00	\$236.00
T3008A	65	24"	39"	5"	\$304.00	2 (set)	ST6020A	\$42.00	\$346.00
T3008N	65	23"	43"	5"	\$318.00	2	ST6020	\$50.00	\$418.00
T3012A	125	32"	44"	8"	\$501.00	2 (set)	ST6030A	\$95.00	\$596.00
T3012N	125	32"	41"	8"	\$513.00	2	ST6030	\$72.00	\$657.00
T3002A	165	32"	54"	8"	\$621.00	2 (set)	ST6030A	\$95.00	\$716.00
T3016A	225	38"	52"	8"	\$724.00	2 (set)	ST6040A	\$319.00	\$1,043.00
T3016N	225	38"	49"	8"	\$748.00	2	ST6040	\$118.00	\$984.00
T3020A	325	38"	72"	12"	\$884.00	2 (set)	ST6040A	\$319.00	\$1,203.00
T3020N	325	38"	68"	16"	\$916.00	2	ST6040	\$118.00	\$1,152.00
T3022A	335	44"	56"	16"	\$893.00	2 (set)	ST6041A	\$107.00	\$1,000.00
T3021N	425	49"	60"	16"	\$1,126.00	2	ST6210	\$124.00	\$1,374.00
T3024N	525	49"	71"	16"	\$1,304.00	2	ST6210	\$124.00	\$1,552.00
T3025A	535	48"	78"	16"	\$1,229.00	2 (set)	ST6210A	\$114.00	\$1,343.00
T3028N	725	49"	101"	16"	\$2,008.00	3	ST6210	\$124.00	\$2,380.00
T3029A	735	48"	103"	16"	\$1,880.00	3 (set)	ST6211A	\$332.00	\$2,212.00
T3032A	925	62"	81"	16"	\$2,156.00	2 (set)	ST6213A	\$273.00	\$2,429.00
T3031A	1010	48"	130"	16"	\$2,548.00	4 (set)	ST6129A	\$445.00	\$2,993.00
T3032N	1025	49"	139"	16"	\$2,740.00	4	ST6210	\$124.00	\$3,236.00
T3033A	1065	56"	105"	16"	\$2,487.00	3 (set)	ST6131A	\$490.00	\$2,977.00
T3033N	1325	66"	99"	16"	\$3,362.00	3	ST6222	\$172.00	\$3,878.00
T3036N	1625	63"	139"	16"	\$4,877.00	4	ST6300	\$161.00	\$5,521.00
T3036A	1750	62"	147"	16"	\$4,742.00	4 (set)	ST6216A	\$617.00	\$5,359.00
T3038N	3725	92"	145"	16"	\$10,257.00	4	ST6301C	\$579.00	\$12,573.00
T3037N	5025	92"	190"	16"	\$17,442.00	5	ST6301C	\$579.00	\$20,337.00



Picture for illustration purposes only, tank and bands not included.

Horizontal Tank Bases (Base Only)

Part #	Tank Size	Length	Width	Price
ST6080	35	29"	22"	\$236.25
ST6085	65	44"	29"	\$121.00
ST6090	125	42"	38"	\$326.00
ST6095	225	64"	42 3/4"	\$371.00
ST6100	325	64"	42 3/4"	\$459.00
ST6110	525	67"	53 3/4"	\$552.00
ST6200	1025	133"	53 3/4"	\$982.00
ST6233	1325	99"	66"	\$956.00
ST6302	2625 (LADDER)	-	-	\$689.00

Horizontal Tanks

Applicator Tanks & Slimline Space Saver

Horizontal Applicator Tanks

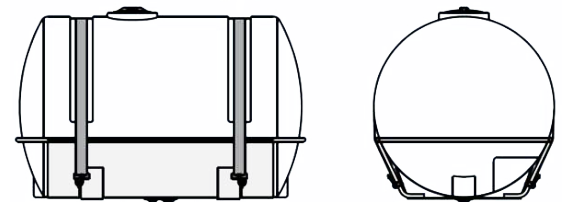
Part #	Gallons	Diameter	Length	Fill	Drain	Price	Saddle	Saddle Price	Price w/ Saddle
T4020N	20	15"	31"	5"	3/4"	\$160.00	NO SADDLE		
T4028N	30	23"	21"	5"	3/4"	\$152.00	ST6330	\$208.00	\$360.00
T4032A	55	23"	38"	5"	3/4"	\$231.00	ST6340A	\$115.00	\$346.00
T4032N	55	23"	34"	5"	3/4"	\$244.00	ST6340	\$249.00	\$493.00
T4036N	85	23"	52"	5"	3/4"	\$388.00	ST6340	\$249.00	\$637.00
T4040A	95	24"	56"	5"	3/4"	\$373.00	ST6342A	\$194.00	\$567.00
T4044N	110	30"	41"	8"	1 1/4" + 1 1/4"	\$406.00	ST6410	\$393.00	\$799.00
T4048A	150	32"	52"	8"	3/4" + 1 1/4"	\$473.00	ST6410A	\$317.00	\$790.00
T4048N	150	32"	46"	8"	1 1/4" + 1 1/4"	\$498.00	ST6410	\$393.00	\$891.00
T4056N	200	32"	62"	8"	1 1/4" + 1 1/4"	\$602.00	ST6420	\$696.00	\$1,298.00
T4060N	200	38"	47"	8"	1 1/4" + 1 1/4"	\$602.00	ST6430	\$476.00	\$1,078.00
T4072N	300	38"	68"	8"	1 1/4" + 1 1/4"	\$783.00	ST6440	\$842.00	\$1,625.00
T4076N	400	42"	74"	8"	1 1/4" + 1 1/4"	\$1,135.00	ST6500	\$840.00	\$1,975.00
T4080N	500	48"	75"	8"	1 1/4" + 1 1/4"	\$1,127.00	ST6510	\$832.00	\$1,959.00

Whether you're looking for a new or replacement tank, you will find it at Chemical Containers. These rugged polyethylene tanks will take all the tough knocks that is expected from fieldwork. Corrosion resistant, lightweight and seamless. And the uniquely designed sealant system on the lids will eliminate excessive loss of material.



Horizontal Applicator Tank Saddles

Support sections include two curved sections for small tanks, and one for large tanks, with bands for one tank, which lets you mount it on your own equipment. Cradles are ideal for replacement tank support. The cradles come with a pre-stamped hole, designed to fit the sump.



Slimline Space Saver Tanks

Part #	Gallons	Width	Length	Height	Price	Saddle	Saddle Price	Price w/ Saddle
T4052N	150	28"	50"	41"	\$639.00	ST6419	\$962.00	\$1,601.00
T4064A	200	24"	55"	46"	\$655.00	ST6421	\$684.00	\$1,339.00
T4068A	250	24"	61"	51"	\$752.00	ST6425A	\$677.00	\$1,429.00

- Cut away style for better visibility.
- Suited for trailer and truck bed mounting when space is limited.
- Bottom sump for drainage.
- Molded in gallonage indicator.
- 8" fill opening.



Call to ask about color availability, or heavy duty tanks.
Prices include shipping to Lake Wales, FL. **Discounts and special pricing available.**

Polyethylene Pest Control, Transport & Loaf Tanks

Pest Control Operators (PCO) Tanks

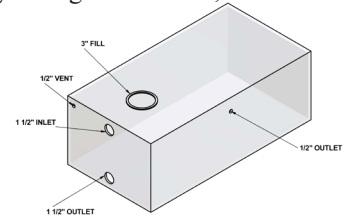
Rotationally molded polyethylene with a ribbed design for extra strength. The standard color is white, and UV inhibitors are added for protection against sunlight. Standard features include; a 8" fill well and splash guard cover, two flat spots on tank ends for mechanical or jet agitation, optional bulkheads and lid strainer bracket. They are ideal for agricultural, nursery, lawn care and commercial turf sprayers.



Loaf tanks

Molded, noncorrosive polyethylene with one-piece seamless construction. Although extremely strong and durable, these tanks weigh only a fraction of aluminum or stainless and are unaffected by electrolysis or corrosion.

Water tanks meet F. D. A. standards for potable water use.



Fitting Location Examples

Pest Control Tanks

Part #	Gallons	Length	Width	Height	Price
T5520N	30	25"	19"	23"	\$253.00
T5530A	50	38"	19"	23"	\$266.00
T5530AS (SUMP)	50	38"	19"	23"	\$266.00
T5530N	50	38"	19"	23"	\$280.00
T5540A	100	38"	30"	29"	\$418.00
T5540N	100	38"	30"	30"	\$444.00
T5550A	150	48"	37"	29"	\$508.00
T5550N	150	48"	37"	29"	\$542.00
T5560A	200	48"	37"	38"	\$631.00
T5560N	200	48"	37"	37"	\$675.00
T5570A	300	69"	37"	40"	\$1,324.00
T5570N	300	69"	36"	37"	\$1,299.00

Transport Tanks

These one-piece, molded polyethylene tanks are designed for transporting, hauling, low spaces, etc. The low profile, flat bottom rectangular design saves space and does not need stands or cradles for support. The tank comes complete with an 8" anti-surge vented fill cap and molded-in calibrations.

Transport Tanks

Part #	Gallons	Length	Width	Height	Fill	Price
T5191A	45	37"	18"	22"	5"	\$205.00
T5192A	50	38"	19"	23"	8"	\$267.00
T9620R	50	38"	26"	13"	8"	\$367.00
T5239A	68	27"	18"	44"	8"	\$357.00
T5245A	100	43"	27"	29"	8"	\$407.00
T9640R	110	38"	26"	26"	8"	\$707.00
T5252A	150	48"	36"	29"	8"	\$487.00
T5261A	200	48"	36"	38"	8"	\$606.00
T9680R	300	62"	42"	29"	8"	\$1,058.00
T9640A	110 (Low Profile)	48"	35"	19"	5"	\$470.00
T9658A	200 (Low Profile)	60"	48"	19"	8"	\$616.00
T9890N	1250 (Low Profile)	130"	81"	38"	16"	\$3,361.00
T9892N	1275 (Low Profile)	126"	84"	36"	2"	\$3,366.00
T9891N	1500 (Low Profile)	130"	81"	44"	16"	\$3,999.00
T9645N	1600 (Low Profile)	126"	84"	42"	16"	\$4,019.00
T9700N	2400 (Box)	150"	90"	53"	16"	\$6,015.00

Polyethylene Loaf Tanks

Part #	Gallons	Length	Width	Height	Price
T5023D	2	23"	7"	4"	\$78.00
T5034R	6	18"	12"	8"	\$111.00
T5042D	10	16"	12"	12"	\$140.00
T5047D	11	30"	10"	8"	\$149.00
T5052AS	12	16"	12"	22"	\$108.00
T5052D	12	22"	16"	9"	\$131.00
T5052R	12	23"	10"	14"	\$146.00
T5058R	13	20"	17"	9"	\$123.00
T5066R	14	24"	14"	10"	\$172.00
T5088R	15	23"	14"	12"	\$153.00
T5094R	16	27"	14"	10"	\$160.00
T5102R	20	22"	19"	11"	\$176.00
T5116R	20	26"	14"	13"	\$162.00
T5124R	21	27"	14"	13"	\$257.00
T5132R	21	36"	20"	7"	\$211.00
T5142A	26	25"	18"	19"	\$181.00
T5142N	26	25"	18"	20"	\$191.00
T5154R	29	30"	20"	12"	\$272.00
T5174R	30	43"	16"	11"	\$330.00
T5166R	31	30"	24"	10"	\$279.00
T5187D	38	37"	22"	12"	\$306.00
T5191A	45	37"	18"	22"	\$205.00
T5192A	50	38"	19"	23"	\$267.00
T5192R	50	36"	18"	18"	\$312.00
T5196A	55	18"	18"	44"	\$264.00
T5198R	61	35"	27"	15"	\$408.00
T5206R	60	69"	27"	9"	\$601.00
T5213A	68	42"	26"	17"	\$376.00
T5239N	68	42"	27"	17"	\$359.00
T5239A	80	27"	18"	44"	\$357.00
T5242D	90	55"	22"	18"	\$747.00
T5245A	100	43"	27"	29"	\$407.00
T5245D	100	46"	20"	26"	\$825.62
T5251D	120	59"	31"	17"	\$1,001.00
T5252A	150	48"	36"	29"	\$487.00
T5261A	200	48"	36"	38"	\$606.00
T9680R	300	62"	42"	33"	\$1,058.00

*These tanks do not include lids or fittings. Please refer to page 12 for fitting types and lids.

Specialty, Total Drain, Open Top Cylindrical & Spot Sprayer Tanks

Specialty Tanks

Part #	Type	Gallons	Length	Width	Height	Fill	Price
T5042A	Rinse Tank	10	13"	13"	21"	8"	\$142.00
T5131A	Upright	20	15"	11"	31"	5"	\$169.00
T5174A	Total Drain	35	28"	19"	20"	5"	\$189.00
T5198A	Total Drain	56	38"	20"	26"	5"	\$262.00
T9686N	Free Standing Narrow	100	36"	18"	43"	8"	\$452.00
T9689A	Free Standing	250	62"	29"	42"	16"	\$846.00
T0930A	Space Saver	300	70"	41"	42"	12"	\$1,074.00
T9687N	Free Standing	300	62"	29"	48"	16"	\$1,138.00
T9690A	Free Standing	400	62"	29"	66"	16"	\$1,401.00
T9690N	Free Standing	400	66"	29"	70"	16"	\$1,470.00
T9691N	Free Standing	500	74"	31"	70"	16"	\$1,674.00
T9692N	Free Standing	750	82"	35"	85"	16"	\$2,559.00
T9693N	Free Standing	1000	92"	40"	89"	16"	\$3,655.00
T9700N	Horizontal Box	2400	150"	90"	53"	16"	\$6,015.00
T9680A	Dock Float	-	48"	24"	12"	-	\$223.00



Open Top Cylindrical Tanks

Part #	Gallons	Diameter	Height	Price	Cover	Price w/ Cover
T60199C	7	10"	21"	\$131.00	T60199CA	\$156.00
T60240C	15	15"	19"	\$123.00	T60240CA	\$148.00
T60260C	17	18"	15"	\$164.00	T60260CA	\$208.00
T60280C	30	18"	29"	\$221.00	T60280CA	\$267.00
T60320C	36	15"	48"	\$500.00	T60320CA	\$525.00
T60360A	55	23"	36"	\$283.00	T60360CA	\$343.00
T60360C	55	22"	36"	\$322.00	T60360CA	\$382.00
T60400C	73	30"	24"	\$999.00	T60400CA	\$1,056.00
T60440C	90	24"	48"	\$544.00	T60440CA	\$634.00
T60480C	100	28"	42"	\$711.00	T60480CA	\$822.00
T60561C	125	36"	30"	\$1,496.00	T60561CA	\$1,635.00
T60600C	150	31"	48"	\$895.00	T60600CA	\$1,019.00
T60680C	200	36"	48"	\$1,027.00	T60680CA	\$1,185.00
T60720C	275	42"	48"	\$1,289.00	T60720CA	\$1,490.00
T60500C	330	45"	48"	\$3,014.00	T60500CA	\$3,520.00
T60520C	360	48"	48"	\$1,562.00	T60520CA	\$1,846.00
T60530A	500	56"	65"	\$1,246.00	Incl. bolt on	
T60530C	500	52"	60"	\$2,522.00	T60530CA	\$2,868.00
T60540C	600	48"	84"	\$5,355.00	T60540CA	\$5,675.00
T6123A	650	61"	53"	\$935.00	Incl. bolt on	
T6125A	1000	74"	64"	\$1,984.00	Incl. bolt on	
T60560C	1250	69"	84"	\$6,898.00	T60560CA	\$7,704.00
T6126A	1500	86"	68"	\$1,987.00	Incl. bolt on	
T6169A	2200	91"	85"	\$3,005.00	Incl. bolt on	

Total Drain Tanks

Part #	Gallons	Length	Width	Height	Fill	Price
T5025ATD	2.5	15"	7"	14"	5"	\$66.00
T5027A	4	11"	11"	15"	5"	\$102.00
T5028ATD	5	11"	11"	20"	5"	\$102.00
T5042A	10	13"	13"	21"	8"	\$142.00
T4012N	12	18"	14"	15"	5"	\$138.00
T5174A	35	28"	19"	20"	5"	\$189.00
T5198A	56	38"	20"	26"	5"	\$262.00



Spot Sprayer Tanks

Part #	Gallons	Width	Length	Height	Price
T4016R	15	14"	32"	14"	\$129.00
T4017A	15	16"	34"	13"	\$78.00
T4024A	25	18"	36"	17"	\$90.00
T4024R	25	16"	35"	18"	\$168.00
T4029A	40	24"	36"	19"	\$147.00
T4035A	60	24"	36"	26"	\$194.00

Tank Accessories

Bolted, Bulkhead & Coupling Tank Fittings

At Chemical Containers, we have the ability to place tank fittings in the appropriate place on your tank to customize your piping and containment needs. We complete all of our custom work with the level of excellence that industry professionals have come to trust.

Polyethylene Coupling Tank Fittings

Part #	Size	Thread	Material	Type	Price
TA4007	1/2"	Weld X FPT	Polyethylene	Full Coupling	\$40.00
TA4007A	3/4"	Weld X FPT	Polyethylene	Full Coupling	\$149.00
TA4008	1"	Weld X FPT	Polyethylene	Full Coupling	\$55.00
TA4008B	1 1/4"	Weld X FPT	Polyethylene	Full Coupling	\$80.00
TA4009	1 1/2"	Weld X FPT	Polyethylene	Full Coupling	\$85.00
TA4010	2"	Weld X FPT	Polyethylene	Full Coupling	\$100.00
TA4011	3"	Weld X FPT	Polyethylene	Full Coupling	\$170.00
TA4012	4"	Weld X FPT	Polyethylene	Full Coupling	\$210.00
TA4007B	1/2"	Weld X FPT	Polyethylene	Half Coupling	\$35.00
TA4007C	3/4"	Weld X FPT	Polyethylene	Half Coupling	\$45.00
TA4008A	1"	Weld X FPT	Polyethylene	Half Coupling	\$50.00
TA4008C	1 1/4"	Weld X FPT	Polyethylene	Half Coupling	\$65.00
TA4009A	1 1/2"	Weld X FPT	Polyethylene	Half Coupling	\$70.00
TA4010A	2"	Weld X FPT	Polyethylene	Half Coupling	\$80.00
TA4011A	3"	Weld X FPT	Polyethylene	Half Coupling	\$140.00
TA4012A	4"	Weld X FPT	Polyethylene	Half Coupling	\$175.00
TA0001	1"	Weld	Polyethylene	Flange	\$82.00
TA0002	2"	Weld	Polyethylene	Flange	\$160.00
TA0003	3"	Weld	Polyethylene	Flange	\$190.15
TA0004	4"	Weld	Polyethylene	Flange	\$331.75
TA0006	6"	Weld	Polyethylene	Flange	\$285.00
TA1199EXL	1/2"	Weld X FPT	Polyethylene	Transition Fitting	\$78.85
TA1200EXL	1"	Weld X FPT	Polyethylene	Transition Fitting	\$102.30
TA1205EXL	1 1/2"	Weld X FPT	Polyethylene	Transition Fitting	\$132.80
TA1206EXL	2"	Weld X FPT	Polyethylene	Transition Fitting	\$132.80



Poly Coupling



316 SS Bolted Fitting



Spinweld Fitting



Bulkhead Fitting



Self-Aligning PVC Fitting



Poly Bolted Fitting

Bulkhead Tank Fittings

Part #	Size	Thread	Material	Price
TA1105	1/2"	FPT X FPT	PVC	\$25.70
TA1107	3/4"	FPT X FPT	PVC	\$29.94
TA1110	1"	FPT X FPT	PVC	\$44.15
TA1112	1 1/4"	FPT X FPT	PVC	\$58.35
TA1115	1 1/2"	FPT X FPT	PVC	\$63.72
TA1120	2"	FPT X FPT	PVC	\$82.25
TA1125	2 1/2"	FPT X FPT	PVC	\$128.27
TA1130	3"	FPT X FPT	PVC	\$157.00
TA1140	4"	FPT X FPT	PVC	\$296.00
TA1160	6"	FPT X FPT	PVC	\$536.29
TA1199	1/2"	FPT X FPT	Polypropylene	\$10.00
TA1200	3/4"	FPT X FPT	Polypropylene	\$11.00
TA1201	1"	FPT X FPT	Polypropylene	\$13.00
TA1203	1 1/4"	FPT X FPT	Polypropylene	\$11.00
TA1205	1 1/2"	FPT X FPT	Polypropylene	\$14.00
TA1206	2"	FPT X FPT	Polypropylene	\$13.00
TA1209	3"	FPT X FPT	Polypropylene	\$42.00
TA1211	4"	FPT X FPT	Polypropylene	\$135.00
TA1207	2"	FPT X FPT	Heavy Duty	\$22.00
TA1207A	2"	FPT X FPT	P/Pro Siphon Tube	\$13.00
TA1210A	3"	FPT X FPT	P/Pro Siphon Tube	\$15.00

Bolted Tank Fittings

Part #	Size	Thread	Material	Price
TA3000A	1/2"	FPT X FPT	316 Stainless	\$243.89
BBF075	3/4"	FPT X FPT	Polypropylene	\$64.87
TA3010A	3/4"	FPT X FPT	316 Stainless	\$250.19
TA3011A	1"	FPT X FPT	316 Stainless	\$187.65
BBF100	1"	FPT X FPT	Polypropylene	\$64.87
BBF150	1 1/2"	FPT X FPT	Polypropylene	\$53.21
BBF200	2"	FPT X FPT	Polypropylene	\$44.34
BBF200BD	2" x 2"	FPT X FPT	Polypropylene	\$61.71
BBF300	3"	FPT X FPT	Polypropylene	\$79.15
BBF300BD	3" x 3"	FPT X FPT	Polypropylene	\$95.87
TA3058A	3/4"	MPT X MPT	316 Stainless	\$187.40
TA3059A	1"	MPT	316 Stainless	\$143.89
TA3060A	1 1/2"	FPT X FPT	316 Stainless	\$170.88
TA3061A	2"	FPT X FPT	316 Stainless	\$239.96
TA3063A	4"	FPT X FPT	316 Stainless	\$394.83
TA3072	3"	FPT X FPT	316 Stainless	\$417.09
TA3079	2"	MPT X MPT	316 Stainless	\$249.36
TA3080	3"	MPT X MPT	316 Stainless	\$489.38
TA3085	3/4"	MPT X FPT	316 Stainless	\$110.00
TA3086	1"	MPT X FPT	316 Stainless	\$118.00
TA3092	1 1/2"	FPT X FPT	316 Stainless	\$158.98
TA3093	2"	FPT X FPT	316 Stainless	\$256.00
TA3095	4"	FPT X FPT	316 Stainless	\$785.00

Tank Accessories

Spinweld & Self Aligning Fittings, Tank Lids

Polyethylene Spinweld Tank Fittings

Part #	Size	Thread	Material	Price
TA4000	3/8"	Spin Weld X FPT	Polyethylene	\$5.00
TA4001HD	1/2"	Spin Weld X FPT	Polyethylene	\$5.00
TA4002	3/4"	Spin Weld X FPT	Polyethylene	\$6.25
TA4003	1"	Spin Weld X FPT	Polyethylene	\$7.50
TA4004	1 1/2"	Spin Weld X FPT	Polyethylene	\$7.55
TA4005	2"	Spin Weld X FPT	Polyethylene	\$8.75
TA4006	3"	Spin Weld X FPT	Polyethylene	\$11.30



16" Lid With Vent



5" Lid w/ check



8" Lid With Ring and Vent



16" Hinged Lid with Ring and Vent

Self Aligning Bulkhead Fittings

Part #	Size	Thread	Material	Price
TA1201A	1"	FPT X FPT	PVC	\$187.75
TA1206A	2"	FPT X FPT	PVC	\$289.00
TA1206N	2"	FPT X FPT	P/Pro	\$109.00
TA1209A	3"	FPT X FPT	PVC	\$448.56

Tank Lids

Part #	Size	Type	Price
TL5524	4"	Lid with Ring	\$16.25
TL4000	5"	Lid with Check	\$20.00
TL4100	5"	Lid with Check	\$86.00
TL4300D	8"	Lid with Ring and Vent	\$27.00
TL4200	8"	Lid with Ring and Vent	\$34.00
TL4300	8"	Lid With Vent	\$24.00
TL4400	8"	Ring	\$11.00
TL5527	12"	Lid with Ring and Vent	\$38.25
TL4700	16"	Lid with Ring and Vent	\$52.00
TL4800	16"	Lid With Vent	\$46.00
TL4900	16"	Ring	\$14.00
TL5025	16"	Vent	\$18.00
TL4700NH	16"	Hinged Lid w/ Ring and Vent	\$160.00
TL5501A	20"	Septic Lid	\$66.00
TL5028NV	22"	Lid with Ring and Vent	\$155.00

Tank Accessories

Part #	Size	Thread	Material	Type	Price
D387	1"	FPT	PVC	Flange	\$31.21
D388	1 1/4"	FPT	PVC	Flange	\$33.60
D389	1 1/2"	FPT	PVC	Flange	\$38.63
D390	2"	FPT	PVC	Flange	\$43.77
D392	3"	FPT	PVC	Flange	\$103.57
D393	4"	FPT	PVC	Flange	\$184.90
D375	1"	SLIP	PVC	Flange	\$16.28
D376	1 1/4"	SLIP	PVC	Flange	\$16.77
D377	1 1/2"	SLIP	PVC	Flange	\$21.55
D378	2"	SLIP	PVC	Flange	\$25.16
D380	3"	SLIP	PVC	Flange	\$45.25
D381	4"	SLIP	PVC	Flange	\$54.30
V130	1/2"	FPT	PVC	Ball Valve	\$30.79
V131	3/4"	FPT	PVC	Ball Valve	\$38.22
V132	1"	FPT	PVC	Ball Valve	\$43.43
V133	1 1/4"	FPT	PVC	Ball Valve	\$77.15
V134	1 1/2"	FPT	PVC	Ball Valve	\$89.80
V135	2"	FPT	PVC	Ball Valve	\$104.03
BV050	1/2"	FPT	Bolted Polypropylene	Ball Valve	\$44.24
BV075	3/4"	FPT	Bolted Polypropylene	Ball Valve	\$44.24
BV100	1"	FPT	Bolted Polypropylene	Ball Valve	\$44.24
BV100FP	1"	FPT	Bolted Polypropylene	Ball Valve	\$48.77
BV125	1 1/4"	FPT	Bolted Polypropylene	Ball Valve	\$48.77
BV150	1 1/2"	FPT	Bolted Polypropylene	Ball Valve	\$62.70
BV200	2"	FPT	Bolted Polypropylene	Ball Valve	\$62.70
BV200FP	2"	FPT	Bolted Polypropylene	Ball Valve	\$88.30
BV300	3"	FPT	Bolted Polypropylene	Ball Valve	\$142.13
BV300FP	3"	FPT	Bolted Polypropylene	Ball Valve	\$211.00
V332	1/2"	FPT	316 SS	Ball Valve	\$35.63
V333N	3/4"	FPT	316 SS	Ball Valve	\$28.35
V334N	1"	FPT	316 SS	Ball Valve	\$38.75
V335	1 1/4"	FPT	316 SS	Ball Valve	\$73.00
V336	1 1/2"	FPT	316 SS	Ball Valve	\$103.25
V337	2"	FPT	316 SS	Ball Valve	\$140.00
V338	3"	FPT	316 SS	Ball Valve	\$473.85
V200	1/2"	FPT	PVC	Gate Valve	\$25.46
V201	3/4"	FPT	PVC	Gate Valve	\$29.90
V202	1"	FPT	PVC	Gate Valve	\$41.20
V203	1 1/4"	FPT	PVC	Gate Valve	\$34.56
V204	1 1/2"	FPT	PVC	Gate Valve	\$74.45
V205	2"	FPT	PVC	Gate Valve	\$91.70
BUV050FP	1/2"	FPT	Polypropylene	Union Valve	\$22.61
BUV075FP	3/4"	FPT	Polypropylene	Union Valve	\$22.61
BUV100FP	1"	FPT	Polypropylene	Union Valve	\$28.27
BUV125FP	1 1/4"	FPT	Polypropylene	Union Valve	\$48.52
BUV150FP	1 1/2"	FPT	Polypropylene	Union Valve	\$48.19
BUV200FP	2"	FPT	Polypropylene	Union Valve	\$61.19

Couplers, Adapters and Strainers

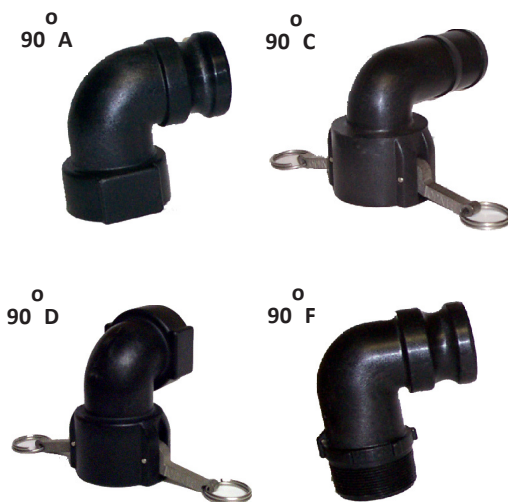


Cam Action Couplers

1/2"		3/4"		1"		1 1/4"		1 1/2"		2"		3"	
Part #	Price	Part #	Price	Part #	Price	Part #	Price	Part #	Price	Part #	Price	Part #	Price
B050A	\$6.98	B075A	\$5.82	B100A	\$5.82	B125A	\$5.82	B150A	\$6.61	B200A	\$7.79	B300A	\$18.83
B050B	\$15.97	B075B	\$13.31	B100B	\$15.29	B125B	\$15.29	B150B	\$17.93	B200B	\$21.83	B300B	\$36.69
B050C	\$13.31	B075C	\$13.31	B100C	\$15.29	B125C	\$15.29	B150C	\$17.93	B200C	\$21.83	B300C	\$36.69
B050D	\$13.31	B075D	\$13.31	B100D	\$15.29	B125D	\$15.29	B150D	\$17.93	B200D	\$21.83	B300D	\$36.69
B050E	\$6.29	B075E	\$6.29	B100E	\$6.99	B125E	\$6.99	B150E	\$7.01	B200E	\$9.20	B300E	\$24.13
B050F	\$6.29	B075F	\$6.29	B100F	\$6.99	B125F	\$6.99	B150F	\$7.01	B200F	\$8.89	B300F	\$24.13
B050CAP	\$0.00	B075CAP	\$13.31	B100CAP	\$14.69	B125CAP	\$0.00	B150CAP	\$17.93	B200CAP	\$21.83	B300CAP	\$36.69
B050PL	\$0.00	B075PL	\$6.29	B100PL	\$6.04	B125PL	\$0.00	B150PL	\$8.11	B200PL	\$9.13	B300PL	\$19.13

90° Cam Action Couplers

Part #	Price
B150A90	12.51
B200A90	14.27
B150C90	25.77
B200C90	26.63
B150D90	25.77
B200D90	26.63
B150F90	14.99
B200F90	13.4



Manufactured from glass reinforced polypropylene. Smooth Operating 304 Stainless Steel cam arms and pins. Pressure rating 1/2" - 2" 125 PSI, 3" 100 PSI. Standard with EPDM gaskets, Viton Available. Interchangeable with other couplers and adapters.



Basket Strainers		
Part #	Size	Price
TL3050	8"	\$32.00
TL3052	10"	\$100.00
TL3051	16"	\$66.40



We stock a huge assortment of Strainers and screen meshes, in a variety of configurations for virtually any application. Give our expert sales staff a call and let them help you choose which is right for your needs.

Polypropylene Ball Valves



BVSFHB200

2" Standard Port Ball Valves

Part #	Fitting	Max PSI	Opening Thru Ball	Price
BVSF200	2" Male Adapter X 2" Female NPT	100	1 1/2"	\$69.02
BVSMT200	2" Male NPT X 2" Female NPT	100	1 1/2"	\$69.02
BVSFMT200	2" Male Adapter X 2" Male NPT	100	1 1/2"	\$73.44
BVSFHB200	2" Male Adapter X 2" Male Hose Barb	100	1 1/2"	\$84.17



BVSMT200

6 Bolt Polypropylene Bolted Ball Valve

Part #	Port	Max PSI	Fitting Size	Opening Thru Ball	Price
BV200FP	Full	150	2"	2"	\$88.30
BV300	Standard	150	3"	2 1/2"	\$142.13
BV300FP	Full	150	3"	3"	\$211.00
BV400	Standard	75	4"	3 1/2"	\$461.15



BVSF200

4 Bolt Polypropylene Bolted Ball Valve

Part #	Port	Max PSI	Fitting Size	Opening Thru Ball	Price
BV050	Full	150	1/2"	3/4"	\$44.24
BV075	Full	150	3/4"	3/4"	\$44.24
BV100	Standard	150	1"	3/4"	\$44.24
BV100FP	Full	150	1"	1"	\$48.77
BV125	Standard	150	1 1/4"	1"	\$48.77
BV125FP	Full	150	1 1/4"	1 1/2"	\$62.70
BV150	Full	150	1 1/2"	1 1/2"	\$62.70
BV200	Standard	150	2"	1 1/2"	\$62.70

2" Full Port Ball Valves

Part #	Fitting	Max PSI	Opening Thru Ball	Price
BVSMT204FP	2" Male NPT X 2" Female NPT	100	2"	\$83.32
BVSF204FP	2" Male Adapter X 2" Female NPT	100	2"	\$83.32
BVS204FP	2" Female NPT X 2" Female NPT	100	2"	\$83.32
BVSFMT204FP	2" Male Adapter X 2" Male NPT	100	2"	\$83.32

3" Standard Port Ball Valves

Part #	Fitting	Max PSI	Opening Thru Ball	Price
BMVSF300	3" Manifold Flange X 3" Male Adapter	100	2 1/2"	\$170.32
BMVSMT300	3" Manifold Flange X 3" Male NPT	100	2 1/2"	\$212.83
BVSMT300	3" Female NPT X 3" Male NPT	100	2 1/2"	\$212.83
BVSF300	3" Female NPT X 3" Male Adapter	100	2 1/2"	\$170.32
BVSFMT300	3" Male NPT X 3" Male Adapter	100	2 1/2"	\$170.32

CPP Fittings and Adapters

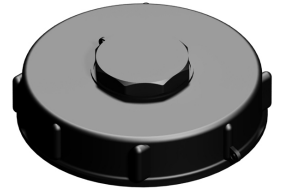


Chemical Containers inc offers a variety of CPP fittings including camlocks, IBC valves, key-lock, easy-seal, hose fittings and more.



- 275 Gallon UN Transport Tanks (Reconditioned)
- 6" Top Lid
- 2" Bottom Valve
- Polyethylene Bottle
- Galvanized Steel Cage
- 40"W x 48"D x 45"H
- Call For Pricing

Part # - T9670CCS



CPP Fittings		
Part #	Description	Price
CPP200SVALVEC	SCHUETZ CONT. VALVE 2" CAM, CAP	\$40.00
CPP200SVALVEB	SCHUETZ CONT. VALVE 2" CAM, CAP	\$40.00
CPP2BCS/20B/024	2" BSP SHORT DUST CAP, BLK	\$1.62
CPP2BC20N024	2" NPT FEMALE DUST CAP	\$2.76
CPP200UD	2" DUST CAP, IBC THREAD	\$3.84
CPP21B024	2 1/8" DUST CAP, IBC VALVE CAM OULET	\$3.00
CPP1020M027	1" PART A CAM X 2" NPS FEMALE	\$10.08
CPP200ABPS	2" PART A, 2" CAM ADAPTOR	\$9.60
CPP200200C	2" PART C, 2" CAM X 2" HB	\$16.29
CPP200150C	2" PART C, 2" CAM X 1 1/2" HB	\$23.34
CPP200125C	2" PART C, 2" CAM X 1 1/4" HB	\$23.34
CPP200100C	2" PART C, 2" CAM X 1" HB	\$23.34
CPP150P20BV	IBC LID, 6" FILL, W/ 2" VENT	\$33.51



Polyethylene Tank Facts

Tank Warranty

The heavy duty tanks carry a 5 year warranty, premium weight tanks carry a 3 year warranty and and water tanks a 1 year warranty, from date of manufacture.

FDA Approval for Potable Water

The resins used for above ground tanks and cistern below ground tanks are safe for holding potable water. When storing potable water, it is important to keep all light out of the tank to prevent mold build up.



What Can My Tank Hold

Premium tanks, which are 1.5-1.6 specific gravity, for liquids weighing up to 12.5 pounds per gallon. Heavy duty tanks, which are 1.9 specific gravity, for liquids weighing up to 15.8 pounds per gallon. Storing chemicals that have a higher specific gravity than the tanks maximum capacity will void the warranty.

What is the Maximum Temperature for the Tank

Polyethylene tanks can withstand temperatures up to 120 degrees F, but do not have a minimum temperature rating. Storing contents above this temperature can permanently weaken the tank. Due to the maximum allowed temperature of 120 degrees F, liquids with low flash points cannot be held in poly tanks.

What Chemicals Can I Store in the Tank

There are a variety of chemicals that can be stored in a poly tank, but due to the vast amount of different chemical concentrations, we strongly encourage you to contact our expert salesman to ensure that the chemical is compatible with our tanks.

What Tanks Can I bury

The only tanks that can be buried are the cistern and septic tanks. They have ribbed walls for structural integrity and will not collapse from the backfill procedure.

What Type of Surface do I Need for My Tanks

We recommend that you properly install a concrete pad for any vertical tanks over 2,000 gallons.

For any questions not answered by our tank facts page, please contact our expert salesman and they can answer any questions you may have.

1-800-346-7867



- 275 Gallon UN Transport Tanks (Reconditioned)
- 6" Top Lid
- 2" Bottom Valve
- Polyethylene Bottle
- Galvanized Steel Cage
- 40"W x 48"D x 45"H
- Call For Pricing

Part # - T9670CCS

Molded to fit full-size American made pickups, the 325 and 425 sizes now have low profiles for better rear vision and feature fill openings offset to the side of the tank for safe and easy access. Tough circular design adds strength. The 210 gallon tanks fits both "mini" pickups as well as full-size models.



Keep your liquids at nominal temperature this winter. Custom heat tracing panels can be installed to virtually any size tanks. Latex mastic coating is applied to the external tank surface to achieve the correct "R" value.

Call Today for pricing and availability.

CHEMICAL CONTAINERS, INC.



Pickup Truck Tanks

Part #	Gallons	Diameter	Height	Fill	Price
T0904N	210	60" / 51"	28"	8"	\$501.00
T0908N	325	62"	32"	8"	\$774.00
T0912N	425	65"	37"	8"	\$912.00



500 gallon fuel tank shown in T6124D containment basin

Carbon Steel Fuel Tanks Available in 3 popular sizes, 280 Gallon, 500 Gallon and 1000 Gallon. Available in Single wall and Double wall, Also available with or without UL Label. All Carbon Steel Fuel tanks include Roll Over Brackets.

Call for current pricing.

Visit Or Call Any Of Our Convenient Locations

CCI Lake Wales
413 ABC road
Lake wales, FL 33898
(863) 638-1407

CCI Sebring
6402 US Hwy 27 South
Sebring, FL 33876
(863) 314-6647

CCI Clewiston
742 E Sagamore
Clewiston, FL 33440
(863) 301-3520

CCI Ft. Pierce
15897 Orange Avenue
Ft. Pierce, FL 34945
(772) 801-5326

CCI Plant City
601 Hitchcock Street
Suite 103
Plant City, FL 33563
(813) 752-1982

CCI Homestead
24852 SW 177th Ave.
Homestead, FL 33031
(786) 504-3492

CCI Arcadia
440 N Brevard Avenue
Arcadia, FL 34266
(863) 491-0165

CCI Lyons, GA
699 South State Street
Lyons, Ga 30436
(912) 388-2154

OR VISIT US ONLINE:
WWW.CHEMICALCONTAINERS.COM