



PVC Entrance Caps

For rigid • IMC • EMT • Rigid PVC. Sizes 1/2" - 2" include adapter sleeve for EMT.



PVC100 - PVC104



PVC105, PVC106, & PVC129



PVC109

For 3" conduit use both sleeves. For 3-1/2" conduit use the larger adapter sleeve.

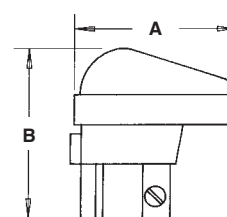
CATALOG NUMBER	UPC/DCI/NAED MFG #01 8997	TRADE SIZE	MAST SIZE	STD PKG	DIM A	DIM B
PVC100	73100	1/2	1/2	25	2.630	2.900
PVC101	73101	3/4	3/4	25	3.340	3.150
PVC102	73102	1	1	20	3.340	3.360
PVC103	73103	1-1/4	1-1/4	10	4.125	3.530
PVC104	73104	1-1/2	1-1/2	10	4.145	3.770
PVC105	73105	2	2	5	7.790	6.660
PVC129	73129	2	2-1/2	1	7.750	6.660
PVC106	12512	2-1/2	2-1/2	1	9.790	7.620
PVC109*	12513	4	3, 3-1/2, 4	1	12.650	9.070

*Includes adapters for 3" and 3-1/2"

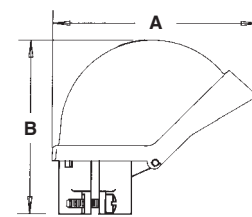


E105706 LR49636

PVC109
PRICED LIKE A 3" SIZED LIKE OUR 4" ALUMINUM CAP (149). SAVES MONEY WHEN USED WITH A 3-1/2" OR 4" MAST SIZE.



PVC100 - PVC104



PVC105 - PVC129

Entrance Caps Clamp-On Type

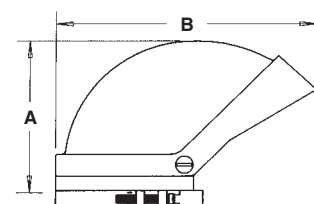
For rigid • IMC • EMT.



CATALOG NUMBER	UPC/DCI/NAED MFG #01 8997	TRADE SIZE	UNIT PKG	STD PKG	DIM A	DIM B	HOLE SIZES
140	00140	1/2	10	10	2.60	2.68	(4).30
141	00141	3/4	10	10	2.72	3.80	(2).38 (3).40
142	00142	1	10	10	3.11	3.32	(2).44 (3).50
143	00143	1-1/4	5	25	3.20	4.46	(2).42 (3).63
144	00144	1-1/2	3	15	4.34	4.85	(2).60 (3).75
145	00145	2	10	10	4.55	6.62	(2).75 (3)1.00 (1).53
146	00146	2-1/2	1	1	7.80	9.74	(3)1.31 (3).87 (1).99
147	00147	3	1	1	8.00	10.50	(3)1.73 (4)1.10
148	00148	3-1/2	1	1	9.25	12.50	(3)1.73 (4)1.10
149	00149	4	1	1	9.25	12.50	(3)1.73 (4)1.10



E105706 LR49636



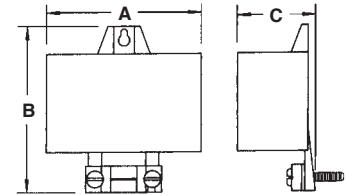


Service Entrance Hoods

Non-metallic.



CATALOG NUMBER	UPC/DCI/NAED MFG #01 8997	WIRE SIZE	STD PKG	DIM A	DIM B	DIM C
EH200	58201	(3) 1/0 to (3) 2/0	1	4.250	6.000	2.000
EH201	43630	(3) 1/0 to (3) 4/0	1	6.000	6.187	2.500

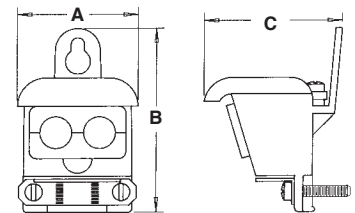


Service Entrance Cable Caps

Zinc die-cast.



CATALOG NUMBER	UPC/DCI/NAED MFG #01 8997	WIRE SIZE	STD PKG	DIM A	DIM B	DIM C	HOLE SIZES
660	00660	7/8" Diam. Max.	50	2.060	2.970	2.260	(2).58
662	00662	1/0 to 4/0	10	3.180	4.520	3.600	(2).80

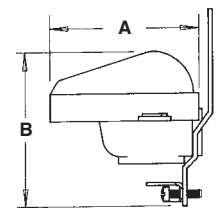


PVC Entrance Caps

With galvanized steel strap.



CATALOG NUMBER	UPC/DCI/NAED MFG #01 8997	WIRE SIZE	STD PKG	DIM A	DIM B	HOLE SIZES
PVC660	73660	(2) 3, 6, 4, 2	50	2.700	2.520	(2).53
PVC662	73662	(2) 1/0 to (2) 4/0	10	4.125	3.750	(2).69

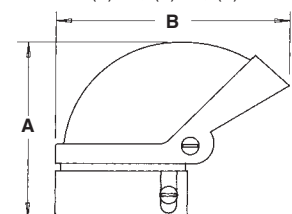


Mast Reducer Entrance Caps

Set-screw type.



CATALOG NUMBER	UPC/DCI/NAED MFG #01 8997	MAST SIZE	CAP SIZE	UNIT PKG	STD PKG	DIM A	DIM B	HOLE SIZES
128	00128	2	1-1/4	1	6	4.020	4.842	(2).43, (3).63
129	00129	2-1/2	2	1	6	5.236	6.506	(1).53, (2).75, (3)1.00



Mast Parts

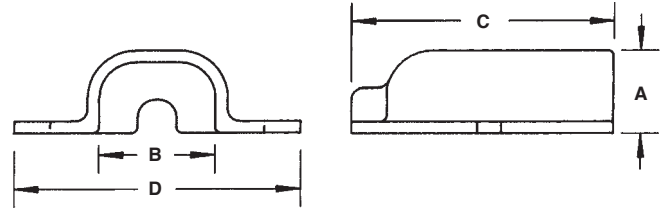


Sill Plates

With screws and compound.
Cast aluminum.



CATALOG NUMBER	UPC/DCI/NAED MFG #01 8997	WIRE SIZE	STD PKG	DIM A	DIM B	DIM C	DIM D
663	00663	(3)#4 to (3)#2	10	.875	1.200	2.750	2.965
664	00664	(3) 3/0 to (3) 4/0	10	2.475	1.850	6.250	3.725

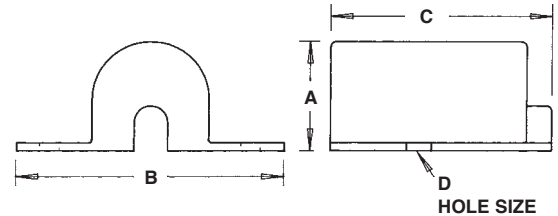


Sill Plates with Duct Seal and Wood Screws

Zinc die-cast. For EMT • SEU cable.



CATALOG NUMBER	UPC/DCI/NAED MFG #01 8997	WIRE SIZE	STD PKG	DIM A	DIM B	DIM C	DIM D
SP360	17360	1/2 EMT & 3/4 EMT	10	.812	2.593	2.421	.218
SP362	17361	1 EMT & 3/3 SEU	10	1.250	3.000	2.500	.218
SP363	17362	1-1/4 EMT & 2/3 SEU	10	1.650	3.812	2.625	.218
SP364	17363	1-1/2 EMT & 4/0 SEU	10	1.750	3.562	3.750	.281
SP365	17364	2 EMT	10	2.312	4.093	4.125	.281

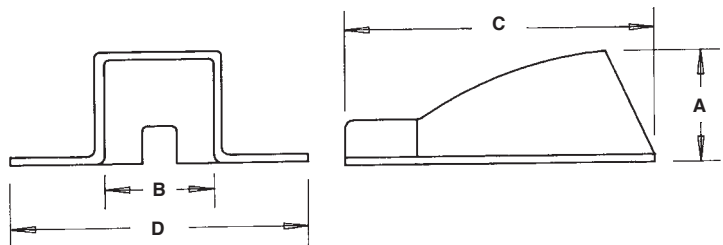


PVC Sill Plates

With screws and compound.



CATALOG NUMBER	UPC/DCI/NAED MFG #01 8997	WIRE SIZE	UNIT PKG	STD PKG	DIM A	DIM B	DIM C	DIM D
PVC85	00085	(3)#4 to (3)#0	10	100	1.188	1.093	3.093	2.970





Porcelain Wire Holder

With solid rivet through head.
Porcelain and galvanized steel.

CATALOG NUMBER	UPC/DCI/NAED MFG #01 8997	SCREW SIZE	STD PKG	DIM A	DIM B	DIM C
612	00612	2-1/4 Lag	5	4.750	2.750	2.250
613	00613	3/8 x 1/2 Match Screw	5	3.350	2.750	2.250
616	00616	2-1/4 Lag	5	5.615	3.200	1.750
617	00617	3/8 x 1/2 Match Screw	5	3.775	3.200	1.750

UL/CSA NOT APPLICABLE



612



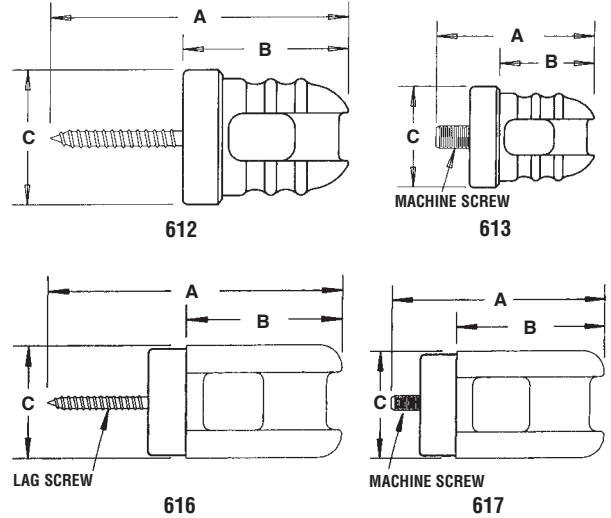
613



616



617

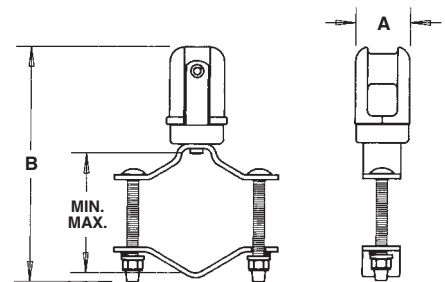


Porcelain Wire Holder

With steel clip. Fits 1-1/4" to 3" pipe.

CATALOG NUMBER	UPC/DCI/NAED MFG #01 8997	CONDUIT SIZE	STD PKG	DIM A	DIM B	MIN	MAX
610	00610	1-1/4 to 3	5	1.875	7.625	1.620	3.930

UL/CSA NOT APPLICABLE



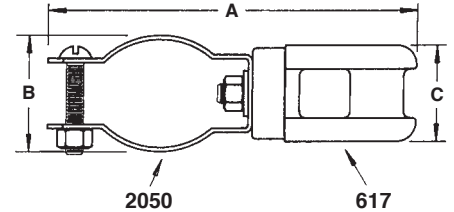


Porcelain Wire Holder

With hanger. Fits 2" rigid or 2" EMT.



CATALOG NUMBER	UPC/DCI/NAED MFG #01 8997	CONDUIT SIZE	STD PKG	DIM A	DIM B	DIM C
645	00645	2	5	7.062	2.450	1.750
UL/CSA NOT APPLICABLE						

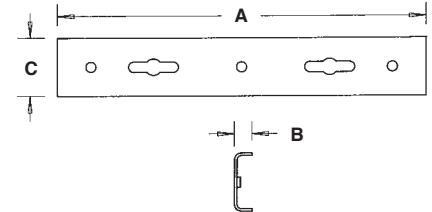


Channel Bar

11" long galvanized.



CATALOG NUMBER	UPC/DCI/NAED MFG #01 8997	DESCRIPTION	STD PKG	DIM A	DIM B	DIM C
611	00611	For two or three 617's or 613's	5	11.000	.525	1.750
UL/CSA NOT APPLICABLE						

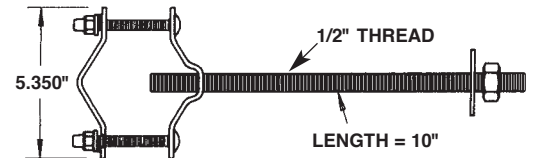


Universal Pipe Support

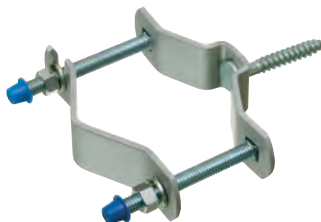
10" bolt.



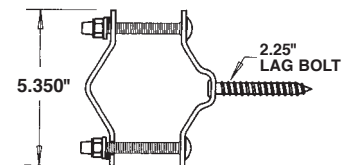
CATALOG NUMBER	UPC/DCI/NAED MFG #01 8997	MAST SIZE	STD PKG
615	00615	1-1/4 to 3	5
UL/CSA NOT APPLICABLE			



Universal Pipe Support



CATALOG NUMBER	UPC/DCI/NAED MFG #01 8997	MAST SIZE	STD PKG
620	00620	1-1/4 to 3	5
UL/CSA NOT APPLICABLE			





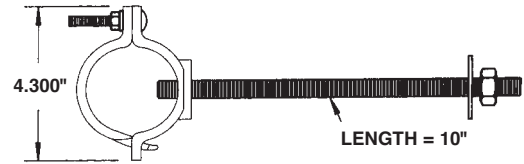
Universal Pipe Support

10" bolt. Sand cast aluminum with steel screw.



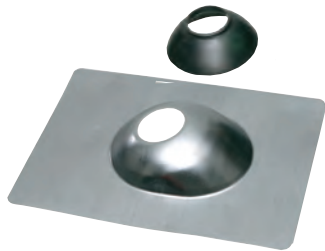
CATALOG NUMBER	UPC/DCI/NAED MFG #01 8997	MAST SIZE	STD PKG
2350	02350	2	5
2850	28550	2-1/2	5

UL/CSA NOT APPLICABLE



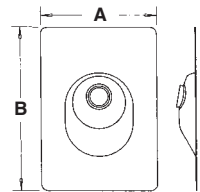
Roof Flashing

Galvanized steel with neoprene seal. 10-3/4" x 14-1/2" x 22 gauge.



CATALOG NUMBER	UPC/DCI/NAED MFG #01 8997	TRADE SIZE	STD PKG	DIM A	DIM B
624	00624	1-1/4 to 1-1/2	10	10.750	12.500
625	00625	2	10	10.750	14.500
626	00626	2-1/2	10	10.750	14.500

UL/CSA NOT APPLICABLE



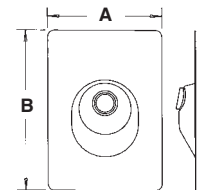
Roof Flashing

All neoprene. Black, one-piece design.



CATALOG NUMBER	UPC/DCI/NAED MFG #01 8997	TRADE SIZE	STD PKG	DIM A	DIM B
634	00634	1-1/4 to 1-1/2	12	9.000	11.500
635	00635	2	12	9.000	11.500
636	00636	2-1/2	12	9.000	11.500
637	00637	3	12	10.000	13.500
639	00639	4	12	11.500	14.000

UL/CSA NOT APPLICABLE





Roof Flashing

Cast aluminum. Includes set-screw(s) to secure pipe and compound.



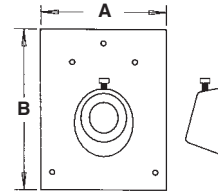
723



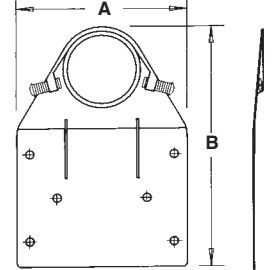
726

CATALOG NUMBER	UPC/DCI/NAED MFG #01 8997	TRADE SIZE	STD PKG	DIM A	DIM B
723	00723	1-1/4	10	7.250	9.500
724	00724	1-1/2	10	9.000	11.000
725	00725	2	5	9.000	11.000
726	00726	1-1/4 to 2	10	7.750	15.000

UL/CSA NOT APPLICABLE



723



726

Mast Kits

Service entrance mast kits provide an assortment of S.E. mast components for installing overhead service drops in residential or commercial buildings using conduit.



MK200WH

CATALOG NUMBER	UPC/DCI/NAED MFG #01 8997	TRADE SIZE	STD PKG	ENTRANCE CAP	ROOF FLASHING	WIRE HOLDER	STRAPS	LAG BOLTS	BOTTOM REDUCER	AMPERE SERVICE
MK200	42200	2	1	145	625	-	(2) 345	(2) 3/8 x 3	650	125-150-200
MK200WH	42205	2	1	145	625	645	(2) 355	-	-	125-150-200
MK200ASF	42210	2	1	145	625	-	(2) 345	(2) 3/8 x 3	-	125-150-200
MK200PS	32044	2	1	145	625	(1) 610, (1) 620	-	-	-	125-150-200
MK250ASF	42250	2-1/2	1	129	626	-	(2) 346	(2) 1/2 x 4	651	125-150-200
MK250ASFX	42255	2-1/2	1	129	626	(2) 615, (1) 610	-	-	-	125-150-200
MK250A	32027	2-1/2	1	129	626	-	(2) 356	-	-	125-150-200