

## Fixing the Panel view for the J9309A 4SFP ZL module in IMC

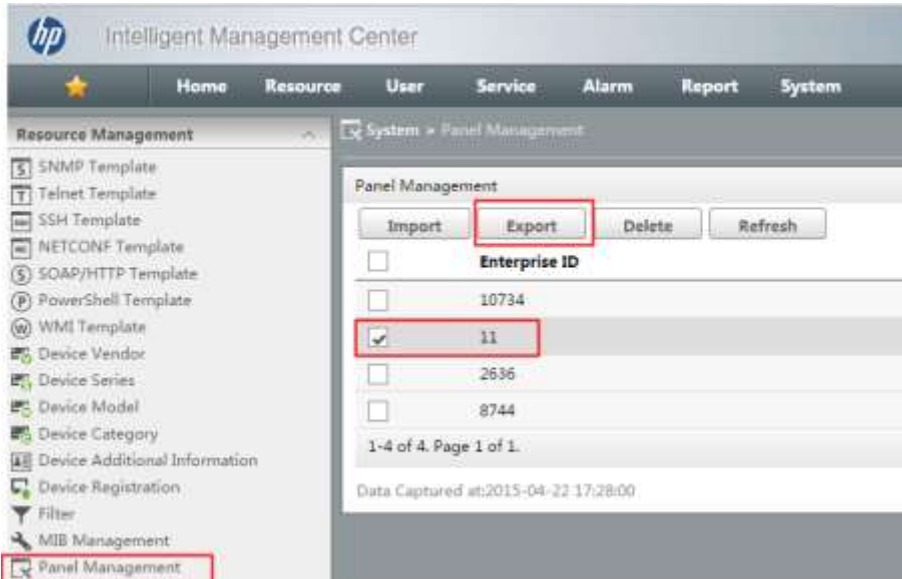
The J9309A is mis-identified in IMC as the OID is missing a digit. Once you have the correct OID from a mib walk, you then can fix the value in IMC.

The incorrect value stored with the J9039A is 1.3.6.1.4.11.2.3.7.11.50.22

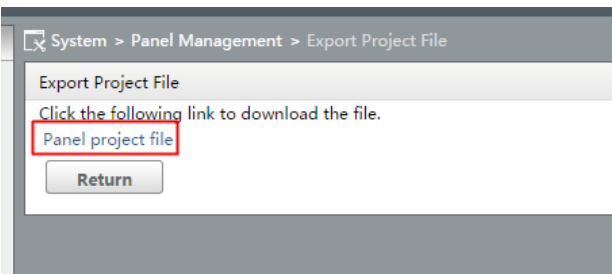
The value should be 1.3.6.1.4.**1**.11.2.3.7.11.50.22

Start by installing the Visual Panel Designer application. It in the IMC install -  
iMC\_PLAT\_7.1\_E0303\_Standard\_Windows\windows\tools\VPD\windows\install

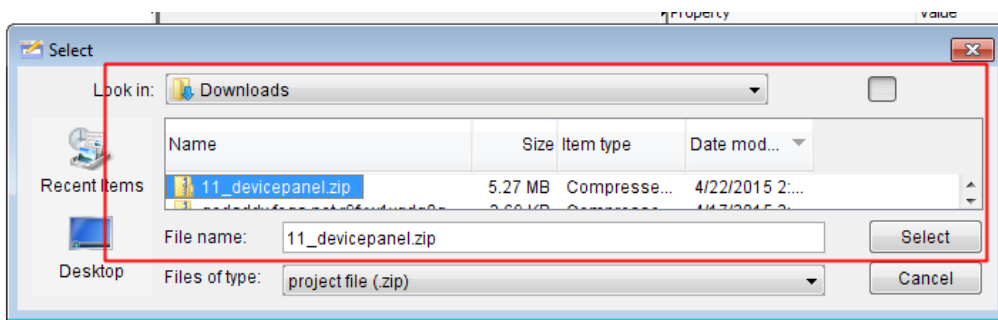
Then export the existing Panel files from IMC – Enterprise ID =11 for HP



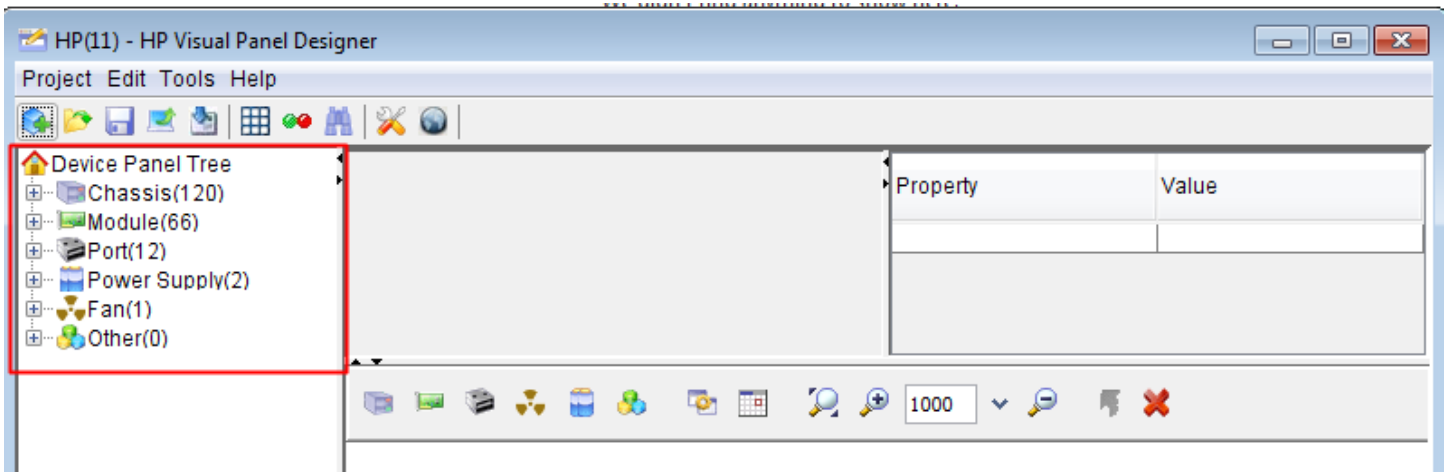
Click the link to download – it will be in your browser's download folder as **11\_devicepanel.zip**



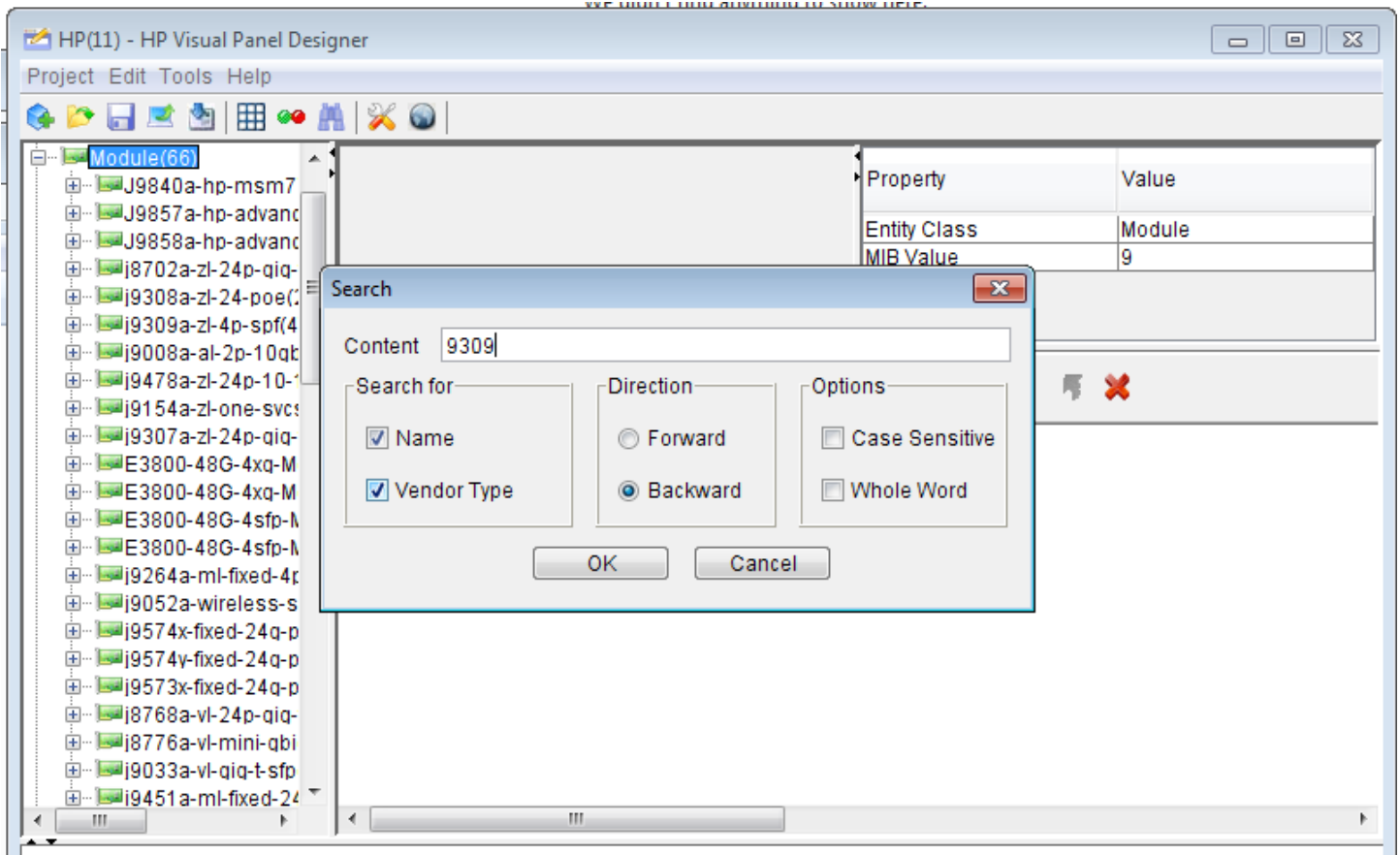
Open VPD and import the zip file



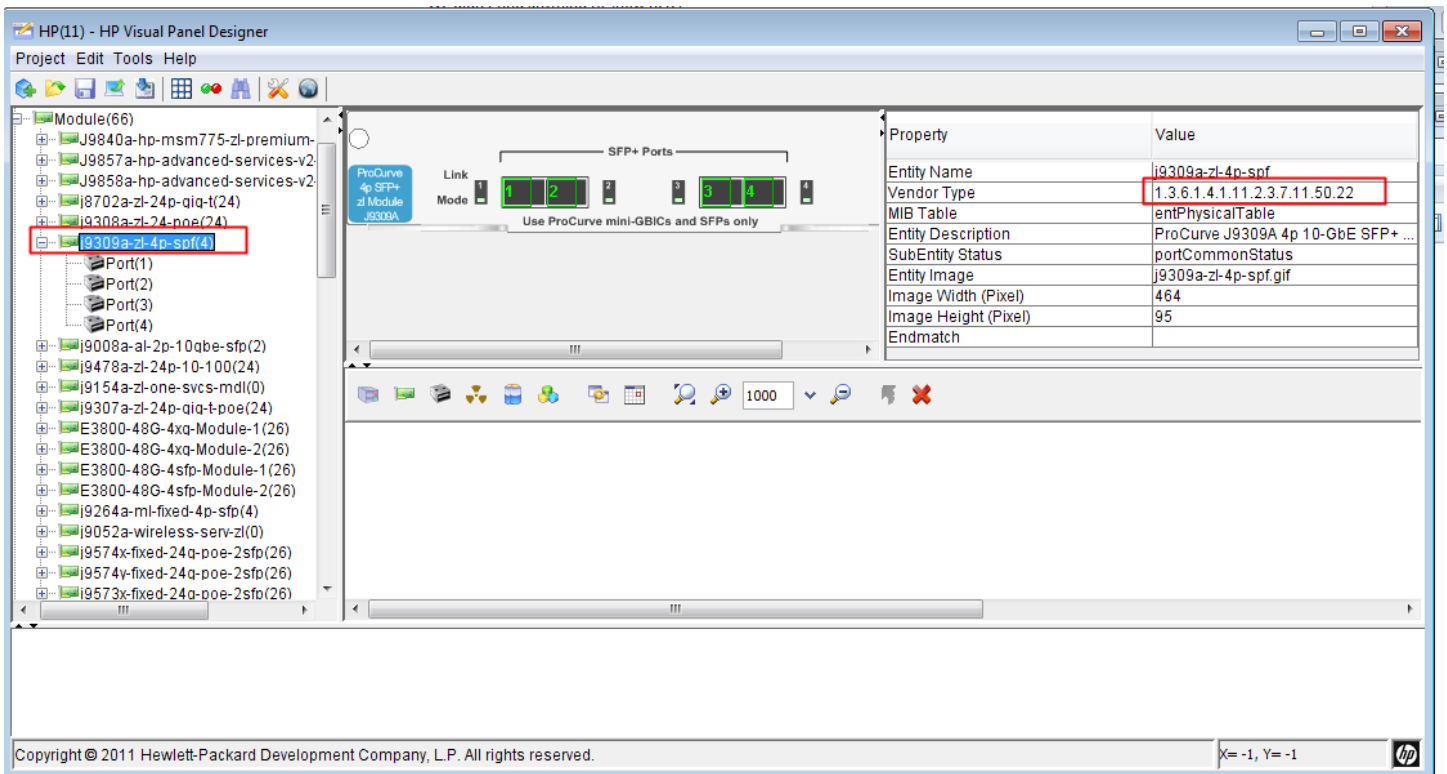
You the should see the list of panels broken down by components



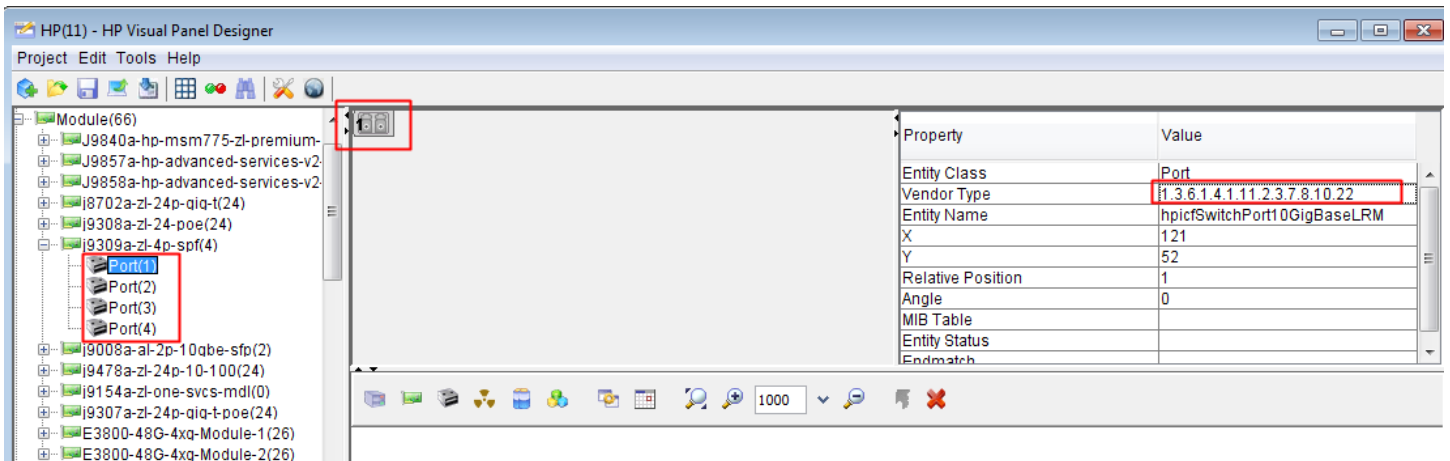
Scroll through or use ctrl-F to find – Direction is reversed? Use backwards



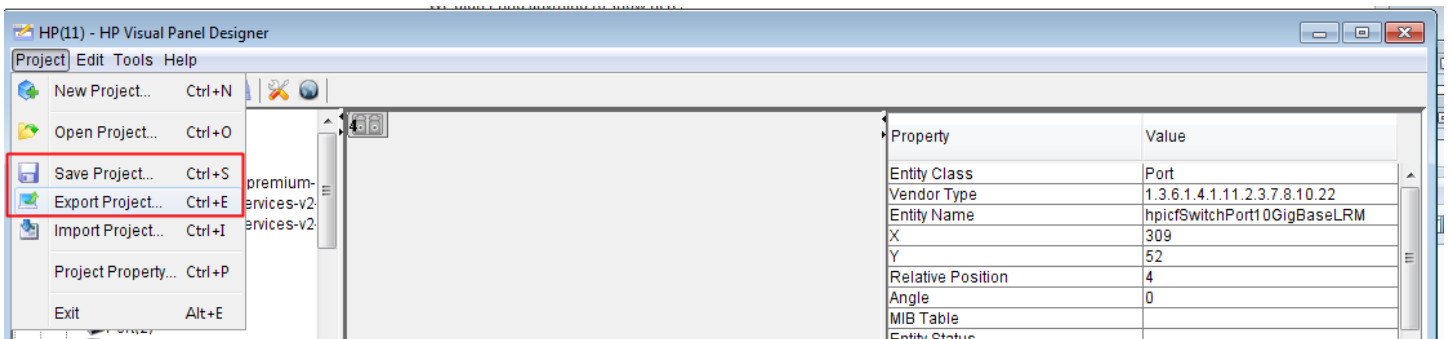
Select the module and edit the vendor type to add the missing 1(or paste in the string from above) – hit enter. Check the rest of the entries match the screenshot. This step will now display the module but not the port status



To display the ports, a port object needs to be referenced. Select each port and add the vendor type OID to reference a port from the port section further down. Set Vendor type to 1.3.6.1.4.1.11.2.3.7.8.10.22 to specify a generic optical transceiver type on all 4 ports. The entity name will populate and the transceiver image is shown.



Save the Project. Then export the project



I had errors saving the project – apparently bad data somehow was included. You can't export the project until its cleaned up. The error reference specific ports on specific chassis – find them and clear the entries for Vendor type. It looks like these are internal bus ports anyway so no need to visually display them anyway.

The screenshot shows the HP Visual Panel Designer interface. On the left is the Device Panel Tree with a hierarchy: Chassis(120) -> j9003a-redundant-wireless-services-xl -> Port(0). A red arrow points from this Port(0) entry to the Property table on the right. The Property table has the following data:

Property	Value
Entity Class	Port
Vendor Type	9999
Entity Name	
X	170
Y	76
Relative Position	0
Angle	0
MIB Table	
Entity Status	
Endmatch	

Below the tree, a red box highlights an error message in the console:

```
Check failed. The specific template cannot be found: 11Device Panel Tree => Chassis => j9003a-redundant-wireless-services-xl-module => Port(0) => 9999 .
```

Other error messages in the console include:

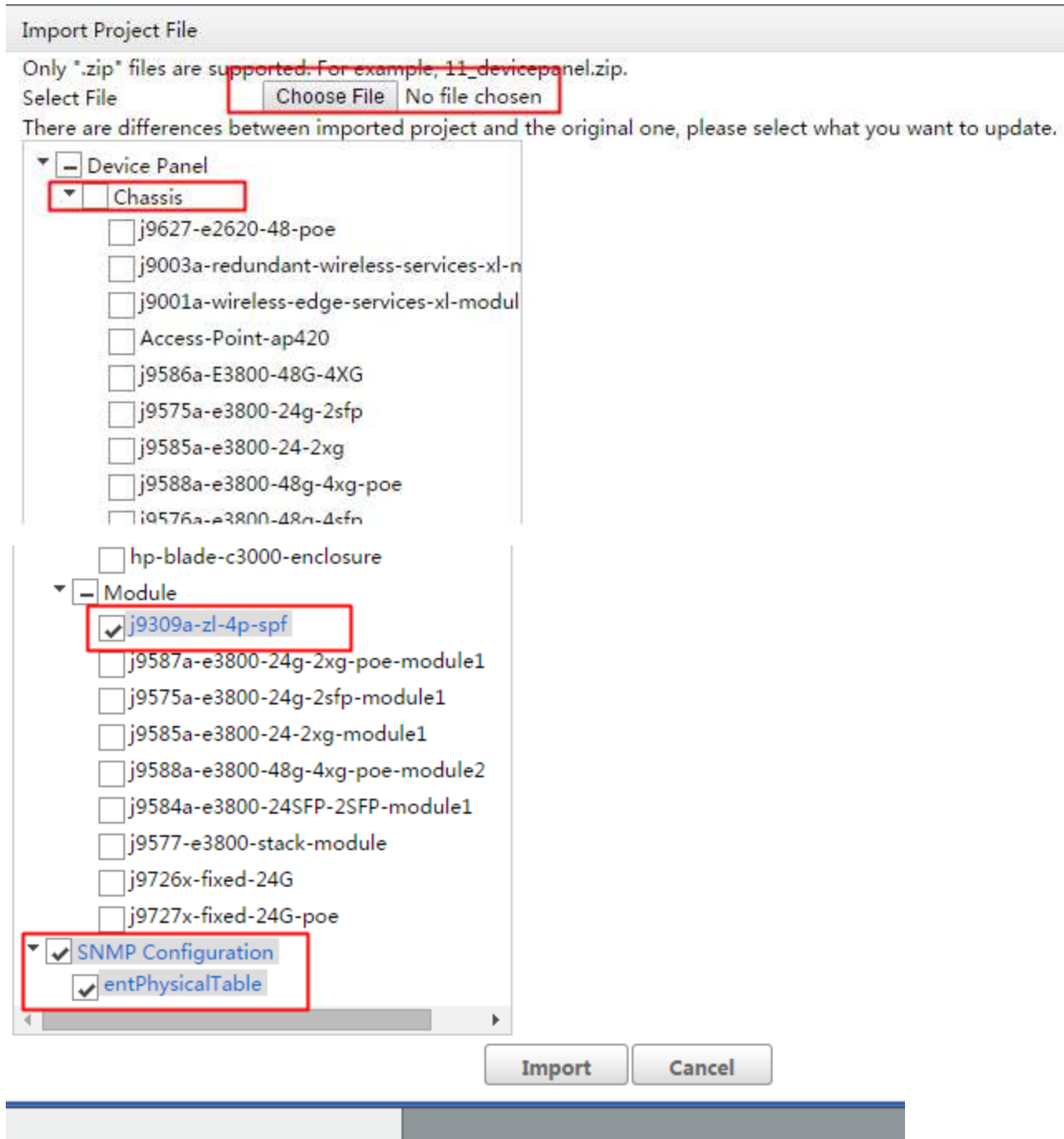
```
Check failed. The specific template cannot be found: 11Device Panel Tree => Chassis => j9003a-redundant-wireless-services-xl-module => Port(1) => 9999 .
Check failed. The specific template cannot be found: 11Device Panel Tree => Chassis => j9001a-wireless-edge-services-xl-module => Port(0) => 9999 .
Check failed. The specific template cannot be found: 11Device Panel Tree => Chassis => j9001a-wireless-edge-services-xl-module => Port(1) => 9999 .
Check failed. The specific template cannot be found: 11Device Panel Tree => Chassis => Access-Point-ap420 => Port(2) => 71 .
```

The bottom status bar shows "Copyright © 2011 Hewlett-Packard Development Company, L.P. All rights reserved." and "X=-1, Y=-1".

Once the errors are cleared the file can be exported. Save it somewhere else from the workspace.

Then go back to IMC panel management and import from the newly created file.

Expand the Device panel and **only pick the ones that were changed**.



Once the panel file is imported, test the device panel.