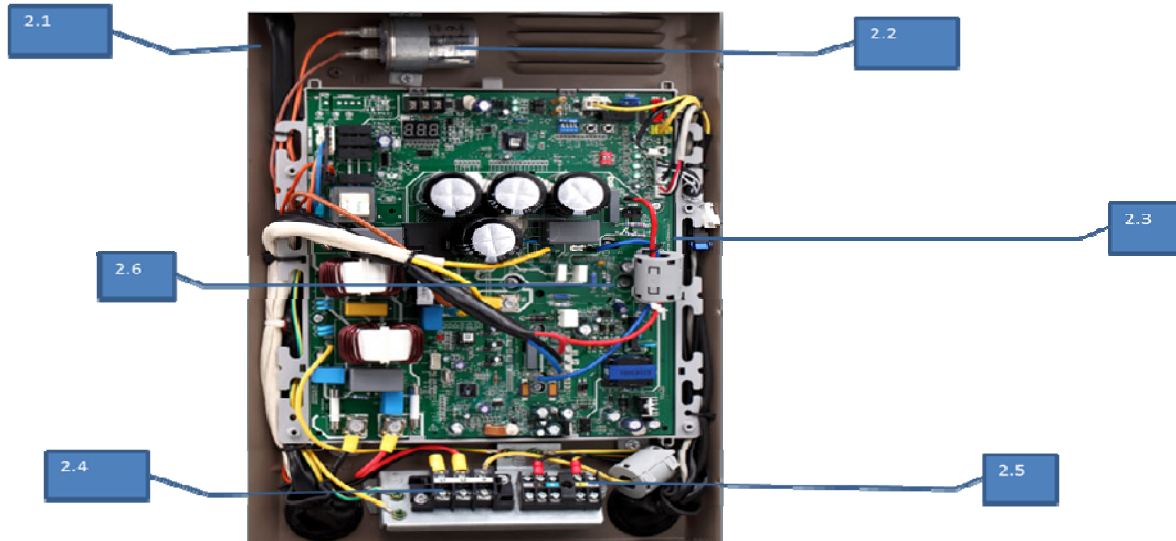
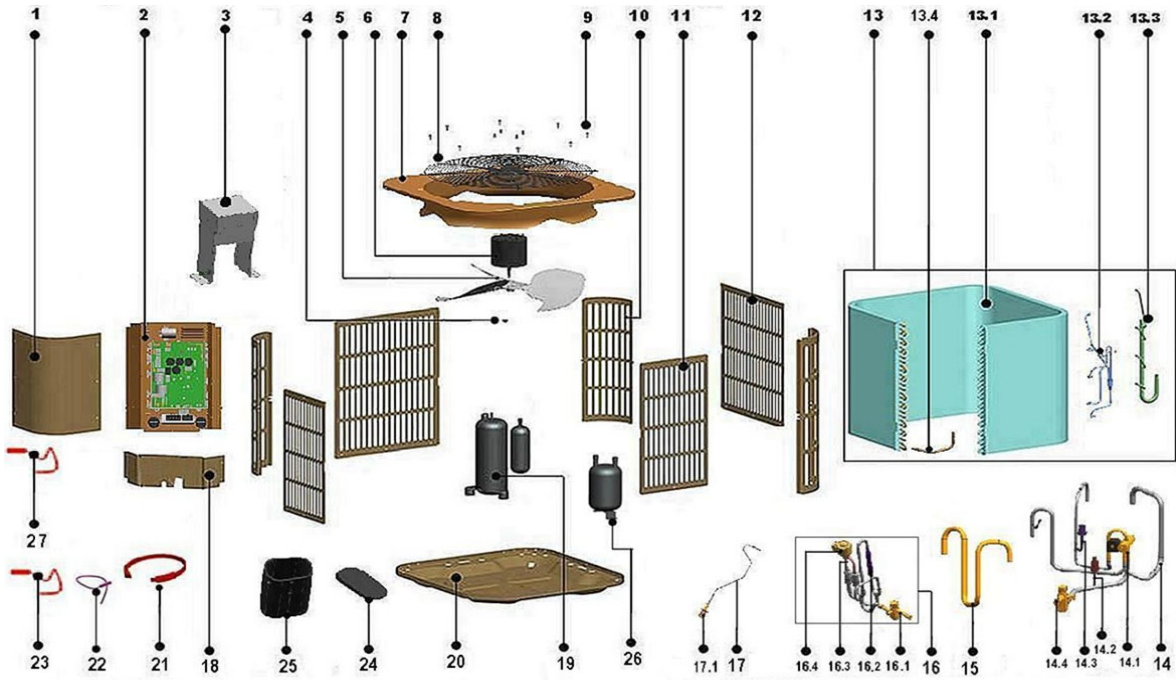


Exploded View

ComfortStar®

Model

MRH24-410



EX_ID	Spare Parts Code	Part Name(EN)	Qty.	Remark2	Remarks
1	12223000002721	Upside board ass'y	1		
2	17223000000489	E-part box ass'y	1		
2.1	12223000001188	Installation board	1		
2.2	17400103000152	Capacitor	1		
2.3	17123000000938	Main control board ass'y	1		
2.4	17400401000186	Wire joint	1		
2.5	17400401000171	Wire joint, 5p	1		
3	17223000000512	E-part box ass'y	1		
4	11301512000143	Nut	1		
5	12200104000033	Axial fan	1		
6	110020120006105	Single phase asynchronous motor	1		
7	12223000001096	Top cover ass'y	1		
8	12227700003729	Top cover	1		
9	11301002000001	Stainless steel bolts	8		
10	12223000003961	Supporting board	3		
11	12223000003979	Side panel assembly	2		
12	12223000003986	Side panel assembly	2		
13	15823000A03262	Condenser assembly	1		
13.1	15823000A03263	Condenser A	1		
13.2	15423000000435	Output tube condenser components	1		
13.3	15123000002037	Condenser input pipe assembly	1		
14	15423000000675	4-way valve ass'y	1		
14.1	15500216000091	4-way valve ass'y	1		
14.2	11201008000028	Pressure sensor	1		
14.3	17400516000077	Pressure switch	1		
14.4	15500206000026	Block valve	1		
15	15123000002681	Suction pipe ass'y	1		
16	15423000000738	High pressure valve Ass'y	1		
16.1	15500206000018	Block valve	1		
16.2	15500203000051	One way valve	1		
17	15123000007173	Meter connector	1		
17.1	15500301000014	Meter connector	1		
18	12223000002730	Rear clapboard ass'y	1		
19	11103020000078	DC Inverter Rotary Compressor	1		
20	12223000002440	Chassis Parts	1		
21	17402001000065	Compressor electric heater	1		
22	11201007001782	Pipe Temperature Sensor	1		
23	11201007002463	Discharge Temperature Sensor	1		
24	12600901000103	Rubber Cap	1		
25	12400301000422	Sponge	1		
26	15500501000040	Gas-liquid separator	1		