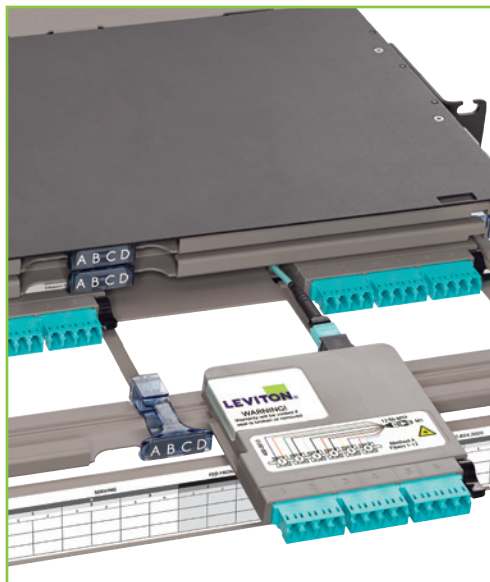
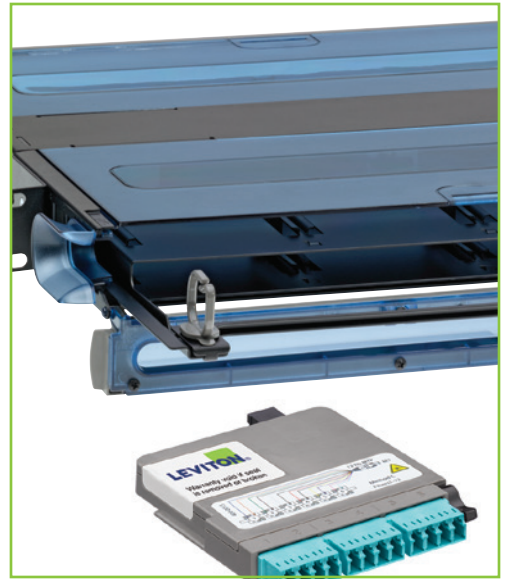


FIBER SYSTEMS

Enclosure and Panel Selection Guide



FIBER SYSTEMS

Whether your installation is small or large, simple or complex, you can rely on Leviton for a network patching platform that meets your requirements. From cloud data center to remote telecom room, from service provider to enterprise office building, Leviton solutions are versatile enough to meet specific customer demands, ensuring migration options for future bandwidth growth and strong return on infrastructure investment.

System Features:	Ultra high density (144F per RU)
	High density (96F per RU)
	Standard density (72F per RU)
	Angled panel eliminates need for patch cord cable manager
	Individual sliding trays minimize impact on surrounding fibers
	Trays lock into place when open, simplifying network maintenance
	One-handed, single-click installation for easy deployment
	10/40/100G Unity migration simplify tech upgrades
	OM4+ fiber type for extended-reach fiber networks
	OM1 / OM2 / OM3 / OM4 / OS2 fiber types for backward compatibility
	Precision-molded adapter plates for durable network connections
	Copper and fiber capability for network flexibility
	Cassettes with adjustable rear MTPs for improved bend radius



Opt-X® SDX
Enterprise

Versatile solutions in multiple sizes and styles for small data centers and enterprise applications.



e2XHD
Mission Critical

High-density snap-in cassettes allow a mix of fiber or copper patching for large enterprise applications.



Opt-X HDX
Mission Critical

High density to expand capabilities with large enterprise applications.

Ultra high density to help meet increasing network demands in data centers.

	Opt-X® SDX Enterprise	e2XHD Mission Critical	Opt-X HDX Mission Critical	
				✓
		✓	✓	
	✓			
		✓		✓
				✓
				✓
		✓	✓	✓
	✓	✓	✓	✓
	✓	✓	✓	✓
	✓	✓	✓	✓
		✓		✓
		✓		



Opt-X® UHDX Enclosures

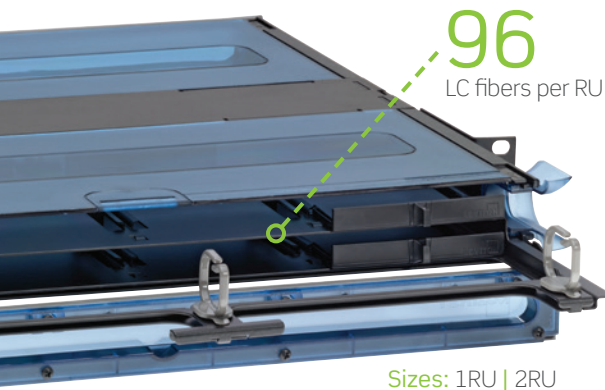
UHDX offers the highest fiber density per rack unit along with easier port identification and cable management. Offered in 1RU, 2RU, and 4RU sizes, UHDX Enclosures help consolidate patching and free-up rack space.

- Up to 144 LC fibers in a 1RU enclosure, 288 LC fibers in a 2RU enclosure, and 576 LC fibers in a 4RU enclosure using HDX adapter plates or MTP® cassettes
- Individual sliding trays remove completely to facilitate field terminations
- Sliding tray glides forward, providing accessibility to front and rear bulkheads after installation
- Removable rear cover/door for open access in 1RU and 2RU enclosures

Opt-X® UHDX Panel

This high-density 1RU angled panel minimizes rack space in a rack or cabinet. The panel allows for easy plug-and-play of pre-terminated solutions and open access to patch cords.

- Up to 144 LC fibers and up to 864 fibers (using 12-fiber MTP) or 1,728 fibers (using 24-fiber MTP) capacity
- Angled panel eliminates the need for patch cord horizontal cable managers
- One-hand installation and removal of HDX MTP cassettes or adapter plates
- Fixed bulkhead shelf minimizes stress on fiber during moves, adds, and changes
- Rear cable manager (sold separately) provides support, routing, and protection



Opt-X 2000i HDX Enclosures

Designed for large enterprise and data center applications, 2000i HDX Enclosures are offered in 1RU and 2RU sizes and support easy field termination of connectors or installation of pre-terminated solutions.

- Up to 96 LC fibers in a 1RU enclosure and 192 fibers in a 2RU enclosure using HDX adapter plates or MTP cassettes
- Sliding tray removes completely to facilitate field terminations
- Sliding tray glides forward and backward providing accessibility to front and rear bulkhead after installation
- Removable rear cover/door for open access

Opt-X 1000i HDX Enclosures

With a simplified look and similar features to the 2000i HDX Enclosure, the 1000i HDX Enclosure is ideal for data centers as well as smaller facilities, such as equipment rooms and telecommunication rooms.

- Up to 96 LC fibers in a 1RU enclosure and 192 fibers in a 2RU enclosure using HDX cassettes and adapter plates
- Sliding tray removes completely from enclosure for ease of field terminations
- Front and rear covers remove for access to interior of enclosure





HDX Adapter Plates & Cassettes

HDX Adapter Plates and Cassettes work with UHDx Enclosures and Panels, HDX Enclosures, and the HDX Frame. They are ideal for data centers or telecommunication rooms with space limitations and growth needs, and can speed deployment and MACs through easy one-hand installation and removal. The HDX platform is recommended for 10G or higher applications.



HDX Adapter Plates

- Connect to field-terminated backbone cabling or pre-terminated trunks
- Easy, one-hand installation and removal
- LC, SC, and MTP® styles in 6, 12, or up to 72/144 fiber configurations are available
- Visible sequential numbering to identify ports (for Tx and Rx)

HDX MTP Cassettes

- 12- or 24-fiber MTP configurations
- Select from LC or MTP connectors for 10G, 40G, or 100G applications
- Configure up to 48 fibers for 6 channels (40G)
- Easy to migrate from 10G to 40/100G when used with Opt-X Unity™ trunks, harnesses, or patch cords
- A variety of fiber types are available including single-mode, multimode, and laser-optimized multimode
- Easy, one-hand installation and removal



Migrate to the HDX Platform

Using your Existing Opt-X® 2000i SDX or 1000i SDX Enclosures



Retrofit trays are available to upgrade your current 1RU or 2RU 2000i SDX or 1000i SDX enclosure to accept high-density HDX cassettes and adapter plates.

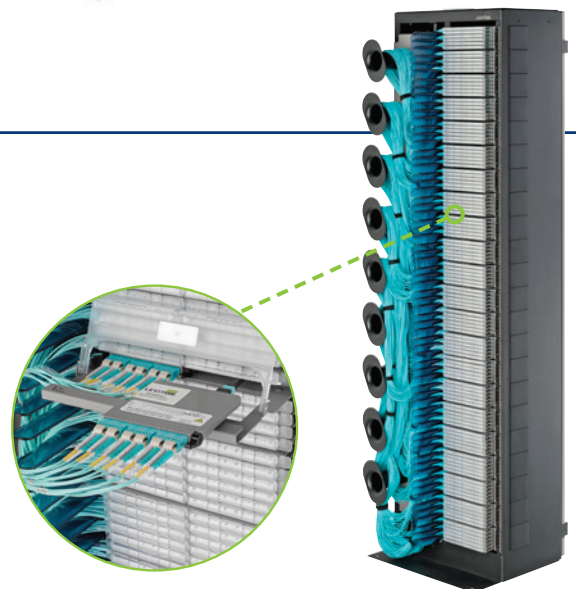
SPOTLIGHT

HDX Fiber Distribution Frame

The HDX Frame is a main cross-connect or interconnect patching frame for all fiber channels in the data center. One frame consolidates patching into an incredibly small footprint, with capacity for up to 3,168 LC fibers, or 15,552 fibers using 24-fiber MTP connections.

The HDX Frame accomplishes such high-density through its unique patch deck design. One frame holds 22 decks, each configured with HDX fiber cassettes and adapter plates, or splice trays. And since it occupies only one data center floor tile, it's easier than ever to access space beneath a raised floor.

For more information, please visit Leviton.com/HDXFrame.



e2XHD Snap-In Cassette Patching System

The e2XHD Fiber and Copper Patching System is an easy-to-connect, high-density solution for applications where fast deployment and simple maintenance are critical. The system includes 1RU and 4RU panels, copper and fiber snap-in cassettes, and accessories for additional cable protection and management.

96

LC fibers per RU



Sizes: 1RU | 4RU

Panels

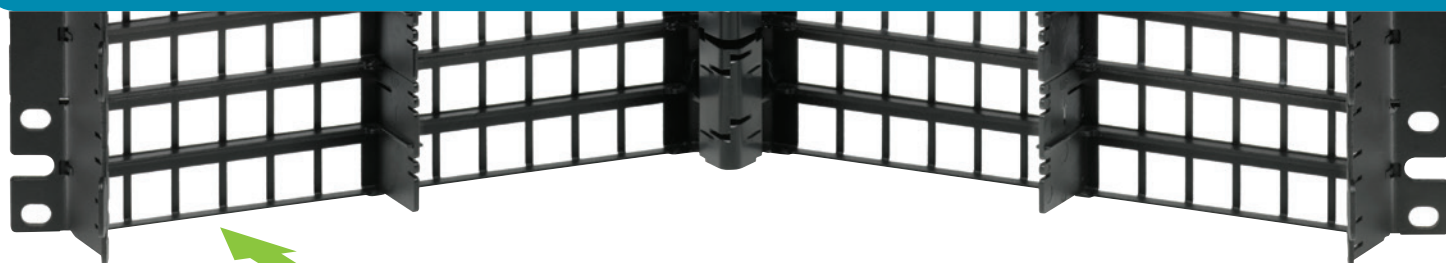
- Flat and angled panels allow for fiber and copper cabling in the same panel
- 1RU panels hold up to 96 fibers (using LC) (8 cassettes) or 48 copper ports (8 cassettes)
- 4RU panels accept up to 192 fiber channels (32 cassettes) or 192 copper ports (32 cassettes)
- Alignment tabs on panels ensure upright insertions of cassettes



Panel Accessories

- Rear cable managers support incoming fiber and copper cables
- Cable management rings are included to help manage and route incoming fiber cables
- Cable clamp kits provide cable strain relief for incoming cables
- The angled panel cover adds protection against dust and debris; it attaches directly to the panel without taking up additional rack space





e2XHD Cassettes

e2XHD fiber and copper cassettes are used exclusively with e2XHD Panels. They quickly snap in and pull out of the panels, making moves, adds, and changes easier than ever.

Fiber Cassettes

- Allow for a simple migration path to 40 GbE and 100 GbE networks with MTP® cassettes
- MTP adapter swivel allows for easy cable routing and proper bend radius
- 12- and 24-fiber MTP and LC adapter cassettes use QuickPort® modular fiber adapters which can be removed with a QuickPort removal tool
- 100G to 10G and 40G to 10G conversion cassettes available



e2XHD Fiber Cassettes feature an MTP adapter that swivels to three positions for easier cable routing. Used in conjunction with a rear cable manager and cable management rings, the adapter delivers an ideal solution for eliminating cable tension and ensuring proper bend radius.



swivel left



center



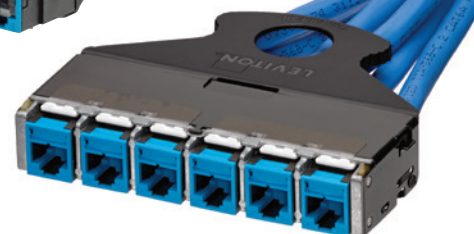
swivel right

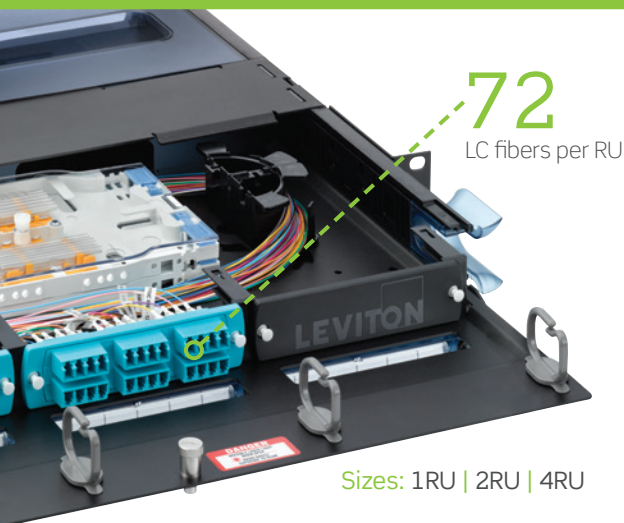
SPOTLIGHT

Copper Cassettes

e2XHD copper cassettes accept six QuickPort connectors. The connectors easily snap into the cassette after termination, and can be removed using a QuickPort Connector Removal Tool. An AXT barrier on the cassette reduces alien crosstalk between ports.

The cassettes are also available on pre-terminated copper trunks (see Leviton.com/configurator).





Sizes: 1RU | 2RU | 4RU

Opt-X® 2000i SDX Enclosures

Designed for enterprise and data center applications, the Opt-X 2000i SDX Enclosure combines all our most popular features into one eye-catching platform.

- Up to 72 LC fibers in a 1RU enclosure
- Removable sliding tray releases from front or rear of enclosure to facilitate field terminations and splicing
- 17-inch depth for high-density fiber termination and/or splicing
- Removable, transparent hinged doors and slide-away covers allow easy access and visibility
- Accepts injection-molded splice trays and 4" x 7" metal splice trays

Opt-X 1000i SDX Enclosures

These durable enclosures allow for easy field termination of connectors, splicing, or patching pre-terminated plug-n-play solutions.

- Sliding tray (optional in 1RU and 2RU) removes completely from enclosure for easy field terminations and splicing
- 15-inch depth for high-density fiber termination and/or splicing
- Removable front and rear covers for better access to interior of enclosure
- Accepts injection-molded splice trays and 4" x 7" metal splice trays



Sizes: 1RU | 2RU | 3RU | 4RU



Sizes: 1RU | 2RU | 3RU

Opt-X 500i SDX Enclosures

Ideal for small enterprise applications, the economical 500i Rack-Mount Enclosure features a one-piece removable cover for complete accessibility to the back of the enclosure.

- Flush-mount adapter bulkhead for ease of moves, adds, and changes
- Accepts injection-molded splice trays and 4" x 7" metal splice trays
- Flush-mount panels available in 1RU and 3RU sizes
- Optional patch cord management tray installs directly to front of enclosure

Opt-X 500i SDX Panels

Designed to use minimum rack space in a frame or cabinet, the 500i Panel supports easy field termination and is ideal for small-enterprise applications.

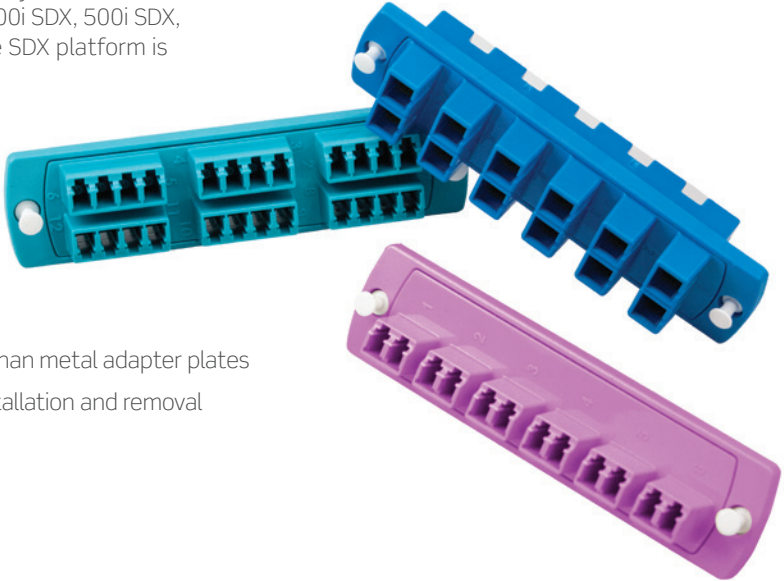
- Flush-mount adapter bulkhead makes moves, adds, and changes easy
- Stackable fiber rings simplify cable routing and organization



Sizes: 1RU | 3RU

SDX Adapter Plates & Cassettes

SDX cassettes and adapter plates offer a standard-density solution where space is less of an issue. They are ideal for maintaining pre-existing infrastructure that requires easier cable management. They work with SDX series enclosures and panels, including the 2000i SDX, 1000i SDX, 500i SDX, and wall-mount 1000 SDX, as well as VertiGO® panels. The SDX platform is recommended for 1G applications or higher.



SDX Adapter Plates

- Unique precision-molded design is eight times stronger than metal adapter plates
- Captive push/pull fasteners allow for quick, tool-free installation and removal
- Available in 6- to 24-fiber plates for LC, SC, and ST
- Available in 72- to 192-fiber plates for MTP®



SDX MTP Cassettes

- Plug-n-play cassette eliminates the need for field termination or splices
- Each cassette supports up to 48 fibers using MTP-MTP, or 24 fibers using MTP-LC
- All cassettes use either 24-fiber or 12-fiber low-loss MTP connectors
- Bend-insensitive fiber used in all cassettes
- Low insertion loss of 0.5 dB maximum
- 100% factory tested with test results included with each cassette
- Violet color option available for OM4+
- Allows easy migration from 10G to 40G or 100G
- MTP-MTP cassettes are used with MTP array cords



Two 24-fiber configurations available:



1x24-Fiber MTP (back view)



2x12-Fiber MTP (back view)

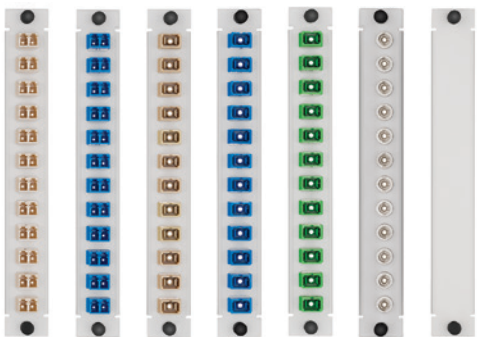
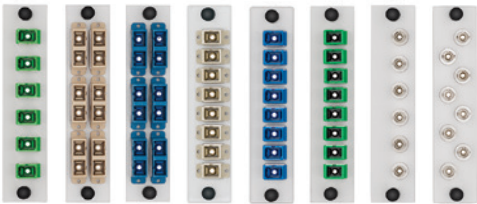
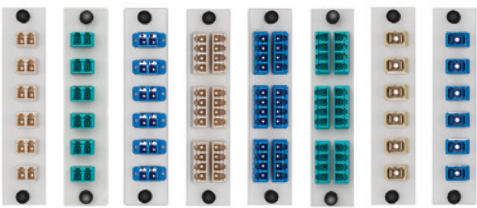


Series: DP | DPS | DPC

LightSpace® Enclosures

LightSpace Rack-Mount Enclosures are specifically designed to meet the requirements of service providers that follow the legacy Lightguide Cross-Connect (LGX®) fiber distribution frame system guideline. Ideal for central office applications, DP and DPS Enclosures are available in 3RU, 4RU, and 6RU sizes. DPC Series Fiber Termination and Splice Enclosures are “combo” units that feature all the benefits of the DP and DPS Series Enclosures, and are available in 6RU, 7RU, and 8RU.

- Large cable management rings for enhanced jumper routing
- Stackable for customized sizing
- Front cable management saddles
- Side entry for backbone cable
- Mounts on standard 19-inch and 23-inch racks and cabinets

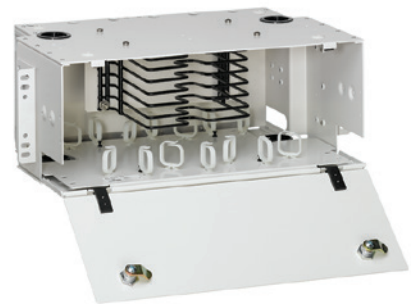


Adapter Plates



DP Optical Distribution Enclosure

DPS Optical Splice Enclosure



DPC Optical Distribution & Splice Enclosure





Flush-Mount Enclosures & Panels

Leviton high-density Flush-Mount Enclosures and Panels are ideal for data center server, zone, or MDA cabinet applications where space is crucial. These enclosures utilize MTP® connections on the back with choice of fiber connectors on the front, or can be pre-assembled with harnesses. Panels can accommodate up to 576 multimode or single-mode fibers, depending on connector style, and mount on standard 19-inch racks and cabinets.

Sizes: 1RU | 4RU | 6RU | 8RU



Vertical Patching Brackets



Brocade 12/24k Replicator 8RU Enclosure, 96 channel, MTP to LC, OM3



Cisco 9513 Replicator 8RU Enclosure, 288 channel, MTP to LC, OM3

Equipment-Specific Solutions

Leviton works closely with the biggest names in active network equipment to create scalable, high-density data center networks. When combined with the latest data center switches from Arista, Brocade, Cisco, and Extreme Networks, Leviton connectivity provides design flexibility for your equipment architecture. These solutions include new conversion harnesses and cassettes that break out 40GbE or 100GbE connections into individual 10GbE channels.



1 Select your Rack-Mount Enclosures & Panels

	Maximum Capacity				Part No.	High Density	Enterprise / DC	Service Provider	
	Fibers using LC	Adapter Plates pass-through	AND Splice Trays*	OR Cassettes					
1RU	UHDX Enclosure, empty	144	12	—	12	5R1UD-S12	X		
	UHDX Angled Panel, empty	144	12	—	12	HDX1A-144	X		
	2000i HDX Enclosure, empty	96	8	—	8	5R1UH-S08	X		
	1000i HDX Enclosure, empty	96	8	—	8	5R1UM-S08	X		
	e2XHD Panel, empty, flat	96	8	—	8	E2X1F-D48	X		
	e2XHD Panel, empty, angled	96	8	—	8	E2X1A-D48	X		
	Flush-Mount Panel	96	—	—	—	MTO			
	Flush-Mount Enclosure	96	—	—	—	MTO			
	2000i SDX Enclosure, empty, with sliding tray	72	3	3	3	5R1UH-S03		X	
	1000i SDX Enclosure, empty	72	3	3	3	5R1UM-F03		X	
	1000i SDX Enclosure, empty, with sliding tray	72	3	3	3	5R1UM-S03		X	
	500i SDX Panel, empty	72	3	—	3	5R1UE-0PX		X	
	500i SDX Enclosure, empty, metal cover/door	72	3	3	3	5R1UL-F03		X	
	2RU	UHDX Enclosure, empty	288	24	—	24	5R2UD-S24	X	
2000i HDX Enclosure, empty		192	16	—	16	5R2UH-S16	X		
1000i HDX Enclosure, empty		192	16	—	16	5R2UM-S16	X		
2000i SDX Enclosure, empty, sliding tray		144	6	6	6	5R2UH-S06		X	
1000i SDX Enclosure, empty, metal door		144	6	6	6	5R2UM-F06		X	
1000i SDX Enclosure, empty, metal door, with sliding tray		144	6	6	6	5R2UM-S06		X	
500i SDX Enclosure, empty, metal cover/door		144	6	6	6	5R2UL-F06		X	
3RU	1000i SDX Enclosure, empty, metal door (vertical adapter/module)	288	12	12	12	5R3UM-F12		X	
	500i SDX Enclosure, empty, metal cover	288	12	12	12	5R3UL-F12		X	
	500i SDX Panel, empty	288	12	12	12	5R3UE-0PX		X	
	1000i SDX Enclosure, empty, metal door (horizontal adapter/module)	216	9	9	9	5R3UM-F09		X	
	LightSpace® DP-525 Enclosure, empty	144	6	—	—	DP03U-STD			X
	LightSpace DPS-525 Enclosure, empty	—	—	4	—	DPS3U-STD			X
4RU	UHDX Enclosure, empty	576	48	—	48	5R4UD-S48	X		
	e2XHD Panel, empty, flat	384	32	—	32	E2X4F-192	X		
	e2XHD Panel, empty, angled	384	32	—	32	E2X4A-192	X		
	1000i SDX Enclosure, empty, metal door (horizontal adapter/module)	360	15	15	15	5R4UM-F15		X	
	2000i SDX Enclosure	360	12	12	12	5R4UH-S12		X	
	1000i SDX Enclosure, empty, metal door (vertical adapter/module)	288	12	12	12	5R4UM-F12		X	
	Flush-Mount Enclosure	288	—	—	—	MTO		X	
	LightSpace DP-700 Enclosure, empty	288	12	—	—	DP04U-STD			X
	LightSpace DPS-700 Enclosure, empty	—	—	6	—	DPS4U-STD			X
6RU	Flush-Mount Enclosure	288	—	—	—	MTO		X	
	LightSpace DP-105 Enclosure, empty	288	12	—	—	DP06U-STD			X
	LightSpace DPS-105 Enclosure, empty	—	—	12	—	DPS6U-STD			X
	LightSpace DPC-525 Enclosure, empty	144	6	4	—	DPC6U-033			X
7RU	LightSpace DPC-752 Enclosure, empty	288	12	4	—	DPC7U-043			X
8RU	LightSpace DPC-700 Enclosure, empty	288	12	6	—	DPC8U-STD			X
	Flush-Mount Enclosure	288	—	—	—	MTO		X	

* Max splice tray capacity is dependent on height of splice tray. See page 13.

2 Select Enclosure Accessories

Description		Part No.	UHDX	2000i HDX	1000i HDX	e2XHD	2000i SDX	1000i SDX	500i SDX	LightSpace®
Fan-out Kit	24" Fiber Optic Fan-out Kit, 6-fiber	49887-06S					X	X	X	X
	24" Fiber Optic Fan-out Kit, 12-fiber	49887-12S					X	X	X	X
	36" Fiber Optic Fan-out Kit, 6-fiber	49887-06L					X	X	X	X
	36" Fiber Optic Fan-Out Kit, 12-fiber	49887-12L					X	X	X	X
Fiber Rings	Fiber Cable Management ¼ Ring Kit	5R100-14R				X	X	X	X	
Cable Clamp Kit	Enclosure-mount Universal Clamp Kit (single cable grommet)	5RCMP-KIT	X	X	X	X	X	X	X	
	Enclosure-mount Universal Clamp Kit (multiple cable grommet)	5RCMP-KT2	X	X	X	X	X	X	X	
	Rack-mount Universal Clamp Kit (single and multiple cable grommet)	5RCMR-KIT	X	X	X	X	X	X	X	X
	DP/DPS/DPC Series Cable Clamp Kit (.25" - 1.25" Ø cable)	DPCMP-UNV								X
Grounding Kit	Universal Grounding Kit	DPGRD-KIT	X	X	X	X	X	X	X	X
Locks & Keys	DP/DPS/DPC Series Lock and Key	DPLOK-KIT								X
	SDX Series Lock and Key	5L000-LOK						X		
e2XHD	e2XHD Rear Cable Manager for Angled Panel, with cable management rings	E2XHD-CMB				X				
	e2XHD Rear Cable Manager for Flat Panel, with cable management rings	E2XIF-CMB				X				

3 Select Adapter Plates

		HDX ^	SDX*	LightSpace®**
LC	12-fiber, OM1 & OM2, quad LC (beige), phosphor bronze sleeve	5FUHD-2IL		APLW6-LDM
	12-fiber, OM3 & OM4, quad LC (aqua), zirconia ceramic sleeve	5FUHD-2QL		APLW6-LDL
	12-fiber, OM4+, quad LC (violet), zirconia ceramic sleeve	5FUHD-2PL		
	12-fiber, OS2, quad LC (blue), zirconia ceramic sleeve	5FUHD-2LL		APLW6-LDS
	12-fiber, OS2, quad LC/APC (green), zirconia ceramic sleeve	5FUHD-2VL		
	12-fiber, OM1, duplex LC, 62.5 µm (beige), zirconia ceramic sleeve		5F100-2IL	
	12-fiber, OM2, duplex LC, 50 µm (black), zirconia ceramic sleeve		5F100-2EL	
	12-fiber, OM3 & OM4, duplex LC, 50 µm (aqua), zirconia ceramic sleeve		5F100-2QL	
	12-fiber, OM4+, duplex LC, 50 µm (violet), zirconia ceramic sleeve		5F100-2PL	
	12-fiber, OS2, duplex LC (blue), zirconia ceramic sleeve		5F100-2LL	
	12-fiber, OS2, duplex LC/APC (green), zirconia ceramic sleeve		5F100-2VL	
	24-fiber, OM1, quad LC, 62.5 µm (beige), zirconia ceramic sleeve		5F100-4IL	
	24-fiber, OM2, quad LC, 50 µm (black), zirconia ceramic sleeve		5F100-4EL	
	24-fiber, OM3 & OM4, quad LC, 50 µm (aqua), zirconia ceramic sleeve		5F100-4QL	
	24-fiber, OM4+ duplex LC, 50 µm (violet), zirconia ceramic sleeve		5F100-4PL	
	24-fiber, OS2, quad LC (blue), zirconia ceramic sleeve		5F100-4LL	
	24-fiber, OM1 & OM2, quad LC (beige), phosphor bronze sleeve			APLW6-LQM
	24-fiber, OM1 & OM2, duplex LC (aqua), zirconia ceramic sleeve			APLW6-LQL
	24-fiber, OS2, duplex LC (blue), zirconia ceramic sleeve			APLW6-LQS

Additional configurations available. Contact inside sales at 800.722.2082.
 ^ = HDX fits all Opt-X UHDX / HDX enclosures and panels and HDX Frame patch decks
 * = SDX fits all Opt-X 2000i, 1000i, and 500i SDX enclosures and panels.
 ** = LightSpace (LGX Footprint) fits all LightSpace enclosures.

continued...

3 Select Adapter Plates (continued)

	HDX ^	SDX*	LightSpace®**
SC	6-fiber, OM1 & OM2, duplex SC (beige), phosphor bronze sleeve	5FUHD-6IC	APLW6-SCM
	6-fiber, OM3 & OM4, duplex SC (aqua), zirconia ceramic sleeve	5FUHD-6QC	
	6-fiber, OS2, duplex SC (blue), zirconia ceramic sleeve	5FUHD-6LC	APLW6-SCS
	6-fiber, OM1, duplex SC, 62.5 µm MM (beige), zirconia ceramic sleeve		5F100-6IC
	6-fiber, OM2, duplex SC, 50 µm MM (black), zirconia ceramic sleeve		5F100-6EC
	6-fiber, OM3 & OM4, duplex SC, 50 µm MM (aqua), zirconia ceramic sleeve		5F100-6QC
	6-fiber, OS2, duplex SC, SM (blue), zirconia ceramic sleeve		5F100-6LC
	6-fiber, OS2, duplex SC/APC, SM (green), zirconia ceramic sleeve		5F100-6VC
	12-fiber, OM1, duplex SC, 62.5 µm MM (beige), zirconia ceramic sleeve		5F100-2IC
	12-fiber, OM2, duplex SC, 50 µm MM (black), zirconia ceramic sleeve		5F100-2EC
	12-fiber, OM3 & OM4, duplex SC, 50 µm LOMM (aqua), zirconia ceramic sleeve		5F100-2QC
	12-fiber, OS2, duplex SC, (blue), zirconia ceramic sleeve		5F100-2LC
	12-fiber, OS2, duplex SC/APC, (green), zirconia ceramic sleeve		5F100-2VC
	6-fiber, OS2, SC/APC, (green), zirconia ceramic sleeve		APLW6-SCA
	12-fiber, OM1 & OM2, duplex SC, (beige), phosphor bronze sleeve		APLW6-SDM
	8-fiber, OM1 & OM2, SC, (beige), phosphor bronze sleeve		APLW8-SCM
	8-fiber, OS2, SC, (blue), zirconia ceramic sleeve		APLW8-SCS
	8-fiber, OS2, SC/APC, (green), zirconia ceramic sleeve		APLW8-SCA
	12-fiber, OS2, SC, (blue), zirconia ceramic sleeve		APLW6-SDS
	12-fiber, OS2, SC/APC, (green), zirconia ceramic sleeve		APLW6-SDA
ST	6-fiber, ST, MM, SM, (black), zirconia ceramic sleeve		5F100-6MT
	8-fiber, ST, MM, SM, (black), zirconia ceramic sleeve		5F100-8MT
	6-fiber, OM1 & OM2, ST, phosphor bronze sleeve		APLW6-STM
	6-fiber, OS2, ST, zirconia ceramic sleeve		APLW6-STS
	8-fiber, OM1 & OM2, ST, phosphor bronze sleeve		APLW8-STM
	8-fiber, OS2, ST, zirconia ceramic sleeve		APLW8-STS
MTP®	6-position MTP, key up/key up	5FUHD-6MB	5F100-6MB
	6-position MTP, key up/key down	5FUHD-6MP	5F100-6MP
	8-position MTP, key up/key down		5F100-8MP
	8-position MTP, key up/key up		5F100-8MB
Blanks	Blank	5FUHD-BLK	5F100-PLT
	6-pk QuickPort®, empty		5F100-6QP

Additional configurations available. Contact inside sales at 800.722.2082.

* = SDX fits all Opt-X 2000i, 1000i, and 500i SDX enclosures and panels.

^ = HDX fits all Opt-X UHDX / HDX enclosures and panels and HDX Frame patch decks

** = LightSpace (LGX Footprint) fits all LightSpace enclosures.

OR Select MTP® Cassettes

	HDX ^ fits HDX Frame, UHDX, and HDX Enclosures and Panels	SDX fits 2000i, 1000i, and 500i Enclosures and Panels	e2XHD fits e2XHD panels
MTP Cassette, 12-fiber MTP-LC, OM3	31LM1-xxN	FM-E012CAC0*	FME2XHD-E012CKQD*
MTP Cassette, 24-fiber 1x24F MTP-LC, OM3	32LM2-xxN	FM-E024CDC0*	FME2XHD-E024CHQE*
MTP Cassette, 24-fiber, 2x12F MTP - 3x8F MTP, OM3	32MM1-xxN	FM-E024NCC0*	FME2XHD-E024MKKE*
MTP Cassette, 24-fiber, 1x24F MTP - 3x8F MTP, OM3	32MM2-xxN	FM-E024NDC0*	FME2XHD-E024MHKD*
MTP Cassette, 48-fiber, 2x24F MTP - 6x8F MTP, OM3	34MM2-xxN	FM-E048NDC0*	

OS2, OM1, OM2, OM4, and OM4+ fiber types available, as well as additional configurations. Contact inside sales or visit Leviton.com/configurator.

xx = Polarity: AN = Method A, CN = Method C, BC = Method B (core), BE = Method B (edge)

* = Polarity: A = Method A, C = Method C, BC = Method B (core), BE = Method B (edge)

Note: For Method B, each channel must have 1 core and 1 edge cassette.

* = Polarity: BC = Method B (core), BE = Method B (edge)

4 Select Splice Trays / Modules

	Heat Shrink (Plastic)	Bare Fusion	Heat Shrink (Foam)	2000i SDX	1000i SDX	500i SDX	LightSpace DPS	LightSpace DPC
Metal Splice Tray								
12-Fiber Mini, 4" x 7" x 0.35"	T47HS-P06	T47BF-P06		X	X	X	X	X
12-Fiber Mini, with standoff, 4" x 7" x 0.57"	5T000-00T			X	X	X		
12-Fiber Standard, 4" x 11.75" x 0.35"	T4LHS-P06	T4LBF-P06	T4LHS-F06				X	X
24-Fiber High-Density, 4" x 11.75" x 0.35"	T4LHS-P12	T4LBF-P12	T4LHS-F12				X	X
12-Fiber Mini, 5" x 7" x 0.35"	T5MHS-P06	T5MBF-P06	T5MHS-F06				X	X
12-Fiber Standard, 5" x 11.75" x 0.35"	T5LHS-P06	T5LBF-P06	T5LHS-F06				X	X
24-Fiber High-Density, 5" x 11.75" x 0.35"	T5LHS-B12	T5LBF-P12	T5LHS-F12				X	X
Precision-Molded Splice Trays								
12-Fiber Mini, 3.74" x 5.59" x 0.56" (14 Heat shrink splice sleeves included)	T5PLS-12F			X	X	X		
24-Fiber High-Density, 4.5" x 7.63" x 0.50" (26 Heat shrink splice sleeves included)	T5PLS-24F			X	X	X		
Ribbon Style Splice Tray								
72-Fiber Ribbon Style, quartz, 6" x 10" x 0.35"	T6XRB-40Q						X	X
SDX 12- & 24-Fiber Splice Modules								
SDX 12-Fiber LC Splice Module		SPLCS-12x		X	X	X		
SDX 24-Fiber LC Splice Module		SPLCS-24x		X	X	X		
SDX 12-Fiber SC Splice Module		SPSCS-12x		X	X	X		

x = OM3 (A), OS2 (L), APC OS2 (V)

5 Select Connectors

	62.5/125µm Multimode	50/125µm Multimode	50/125µm Laser Opt. Multimode	Single-Mode	APC Single-Mode
Fast-Cure® Anaerobic Adhesive					
LC (with 2 - 3 mm boot)	49990-ML2	49990-ML2	49990-LL2	49990-SL2	
LC (with 0.9 mm boot)	49990-MDL	49990-MDL	49990-LDL	49990-SDL	
SC	49990-MSC	49990-MSC	49990-LSC	49990-SSC	
ST	49990-MST	49990-MST		49990-SST	
FastCAM® Pre-Polished					
LC*	49991-MLC	49991-5LC	49991-LLC	49991-SLC	
SC*	49991-MSC	49991-5SC	49991-LSC	49991-SSC	49991-ASC**
ST*	49991-MST	49991-5ST		49991-SST	

** = Termination of angled pre-polished connectors requires a precision angled cleaver

* = Termination of pre-polished connectors requires a precision cleaver

THE SMART CHOICE FOR A BETTER NETWORK

High-performance connectivity backed by
the industry's best service and support

We invent the industry's best technologies. We build them to last. And we stand behind every product and every installation – delivering industry-leading performance and unbeatable service and support – throughout the life of your structured cabling system. Add in the peace of mind that comes from working with a stable, century-old supplier and you get far and away the highest return on infrastructure investment.

Leviton Network Solutions Division Headquarters
leviton.com/networksolutions
2222-222nd Street S.E., Bothell, WA 98021 USA

Inside Sales

T 800.722.2082

E insidesales@leviton.com

Technical Support

T 800.824.3005 / +1.425.486.2222

E appeng@leviton.com

Leviton Corporate Headquarters
leviton.com

201 N. Service Road, Melville, NY 11747 USA

Customer Service

T 800.323.8920 / +1.631.812.6000

E customerservice@leviton.com

International Inside Sales

T +1.425.486.2222

E intl@leviton.com

Leviton International Offices

Asia / Pacific

T +1.631.812.6228

E infoasean@leviton.com

China

T +852.2774.9876

E infochina@leviton.com

India / SAARC

T +971.4.886.4722

E infoindia@leviton.com

Middle East & Africa

T +971.4.886.4722

E imeinfo@leviton.com

Canada

T +1.514.954.1840

E pcservice@leviton.com

Colombia

T +57.1.743.6045

E infocolombia@leviton.com

Latin America

T +52.55.5082.1040

E lsamarketing@leviton.com

South Korea

T +82.2.3273.9963

E infokorea@leviton.com

Caribbean

T +1.954.593.1896

E infocaribbean@leviton.com

Europe

T +33.6.8869.1380

E infoeurope@leviton.com

Mexico

T +52.55.5082.1040

E lsamarketing@leviton.com

All Other International Inquiries

E international@leviton.com

