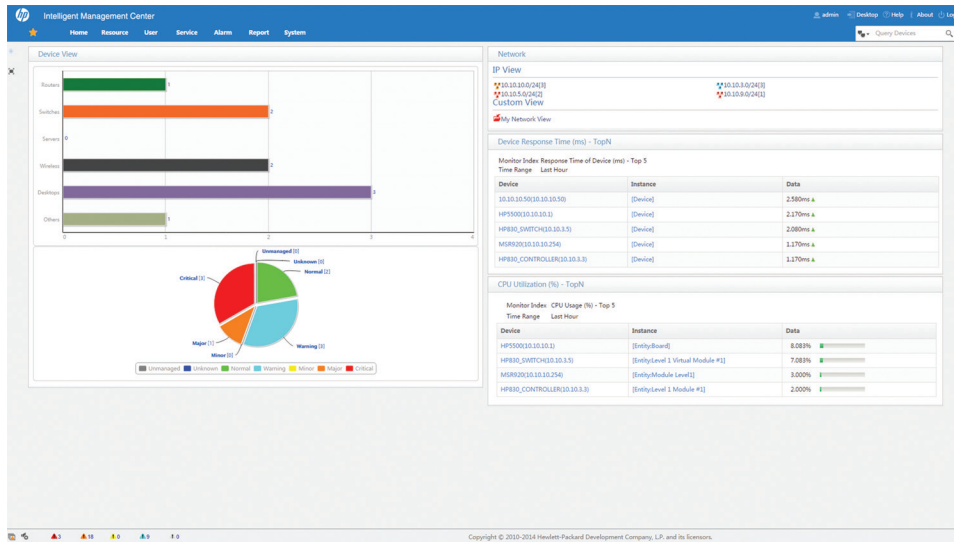


HP Intelligent Management Center Enterprise Software Platform



Key features

- Highly flexible and scalable deployment options
- Powerful administration control
- Rich resource management
- Detailed performance monitoring and management
- Flexible centralized reporting
- Fault, Configuration, Accounting, Performance and Security (FCAPS) capabilities within the IMC Platform
- IMC Network Traffic Analyzer software are included with IMC Enterprise software, as is the IMC eAPI Library

Product overview

IMC is a comprehensive management platform that was built from the ground up to support the Fault, Configuration, Accounting, Performance, Security (FCAPS) model. It provides features and functions that are designed for comprehensive management of the network infrastructure.

IMC was designed to provide the following functions:

- Supports the ITIL operational center of excellence IT practices model.
- Uses a single-pane management paradigm to enable end-to-end business management of IT services.
- Provides scalability by supporting distributed and hierarchical system architectures, through additional operating system and database support.
- Uses an SOA model to provide full resource, service, and user management.
- Enables the integration of traditionally separate management tools using a modular design.
- Enables enterprises to expand their infrastructure management in scale and to seamlessly accommodate new technologies at the same time.

The software is compatible with Microsoft® Windows® Server as well as Red Hat® Linux®, and supports the management of HP and third-party devices. The base license supports 50 managed devices; additional node licenses can be purchased. Five nodes of IMC Network Traffic Analyzer software are included with IMC Enterprise Software, as is the IMC eAPI Library.

Features and benefits

Management

- Resource management

Provides comprehensive element management for multivendor devices using a single Web portal. Operators have access to a feature set for managing and monitoring many different networking devices and can manage them individually or in a group. Operators can also add devices manually, by CSV file, or through auto-discovery. Operators can view devices by topology, IP view, device view, and custom view and see key device details.

- Configuration and change management

Combines the tasks of network device change and configuration management to effectively manage devices and audit changes. Like the IMC Resource Management feature, the configuration center has a portal for accessing most of IMC change and configuration management features. Operators can view and deploy software to devices, access configuration templates, utilize a system software library, clean the device for new deployments, and back up the system.

- Performance monitoring and management

Provides the ability to monitor the performance of devices managed by IMC. The performance management features provide the ability to customize the collection, alarming, and presentation of performance data. IMC enables real-time and historical performance management for managed devices such as routers and switches on data like IPSec VPNs, WSM, and QoS. Also customizable are threshold settings, performance views and data, and global monitors.

- Virtualization management
 - HP IMC Software is one of the first management tools to integrate management and monitoring of both virtual and physical networks.
 - Provides insight and management of virtual networks and reduces migration complexity by aligning as well as automating network policies with virtual images
 - Supports VMware®, Hyper-V, and KVM; IMC Virtual Network Management Software also supports automatic tracking of the network access port of virtual machines
- Flexible, centralized reporting

Offers administrator performance, operator performance, and resource reporting options by template. Other reports offered include real-time reports and quick custom reports. Quick custom reports also give device and link reports. Device reports give information such as IP address, status, location, hardware or software version on devices while link reports show connected to either end of a link. Reports can be customized in the interface to meet specific needs.
- Global ACL management

Provides operators with a comprehensive feature set for managing ACLs including viewing and configuring ACLs on devices managed by IMC, and importing ACLs. An ACL manager supports basic, advanced, link, and user-defined ACLs. An ACL assistant facilitates the template rule creation and easier management. An ACL resource list provides a portal for viewing and managing ACLs with a rule set list. An ACL deployment wizard assists in the deployment of ACLs.
- Role-based administrative controls

Provides administrators with both the tools and the ability to grant access to only those features and resources operators need. IMC also provides controls and audit trails to support IT management best practices. Management rights and access to all resources managed by IMC are granted through operator groups, device groups, and custom views of the devices. An administrator can use operator groups to grant or restrict access to a variety of IMC features.
- Compliance center

IMC includes predefined policies for the compliance center as well as alarm generation when devices fail compliance checks
- Network asset management

With network asset manager, administrators and operators can track assets as well as changes to assets. This feature provides operators with a list of asset and drilldown capabilities into individual device details or device audit details. Operators can also query IMC for specific audit records and manage the device auditing process.
- Real-time fault management

Integrates network management system of fault, performance, auditing, security, and configuration. It also reduces the effort required to manage complex network infrastructures, allowing network managers to have one database of network devices in IMC that drives various tasks of network management. The database integrates with all IMC functions. The alarm or event management system in IMC uses the existing device database and generates alarms in an events of interest.

- Customized functions and third-party device support

IMC Enterprise Software extends device management and configuration functions; users can either extend an existing function to support third-party devices by compiling interactive scripts and XML files, or customize a function by compiling interactive scripts, XML files, and UI configuration files.

- Security Control Center

The Security Control Center (SCC) can be used to define policies and enforce device settings consistently on selected devices; you can also use policies to manage VLANs and VLAN port settings or automatically apply a configuration template on newly discovered devices; you can configure policies to send alarms when device configurations become noncompliant.

- Network data collection

Generates, packages, and sends archived information about your network, device, or IMC Software to the appropriate HP support or sales organizations in one simple step; this feature gathers the data you selected and generates reports and data files containing the relevant information; it delivers the reports to your selected destination, either by email, FTP, SFTP, or to a file location.

- Intuitive user interface

Includes many features enabling administrators and operators to manage the network infrastructure. The tabular navigation system is located at the top of every IMC page to provide one-click access to most of IMC features. IMC also provides operators with many paths to the same destination. Operators are provided with quick start guides. With the "My Favorites" feature, operators can create links to the IMC features they use most often.

- Network traffic analyzer

Informs administrator of real-time network bandwidth consumption by users. IMC Enterprise Software includes five nodes.

- Extensible platform and module services

IMC Software has an open platform to support a service-oriented architecture (SOA); features within the software can be integrated with third-party software, utilizing the available APIs

- Features-based administrative controls

Supports secure operator access to IMC via LDAP or RADIUS authentication, the ability to view the online activity of IMC operators, logging operator access temporarily or permanently, IP-address access, as well as audit trails that detail changes that IMC operators have made to devices in the infrastructure.

- eAPI library and third-party applications

The IMC eAPI library utilizes a RESTful implementation for simplified integration with HP and third-party applications; more than 200 eAPI calls are available in the library, which is included with IMC Enterprise software.

- High availability (Optional software)

Provides high availability for the IMC system by offering one or multiple standby IMC servers for redundancy. IMC HA can be implemented after deployment with a remote database or shared storage.

Warranty and support

- Electronic and telephone support

Limited electronic and business-hours telephone support is available from HP for the entire warranty period; to reach our support centers, refer to hp.com/networking/contact-support; for details on the duration of support provided with your product purchase, refer to hp.com/networking/warrantysummary

- Software releases

To find software for your product, refer to hp.com/networking/support; for details on the software releases available with your product purchase, refer to hp.com/networking/warrantysummary

HP Intelligent Management Center Enterprise Software Platform

Specifications

HP IMC Enterprise Software Platform with 50-node E-LTU (JG748AAE)

Minimum system requirements

Refer to the [IMC Enterprise Release Notes](#) for details about minimum system requirements

Systems requirements recommended

Refer to the [IMC Enterprise Release Notes](#) for details about system requirements recommended

Software Requirements

Operating system (Versions marked X64 are recommended):

- Windows Server 2008 with Service Pack 2
- Windows Server 2008 X64 with Service Pack 2
- Windows Server 2008 R2 with Service Pack 1
- Windows Server 2012 with KB2836988
- Windows Server 2012 R2
- Red Hat Enterprise Linux 5 (Enterprise and Standard versions only)
- Red Hat Enterprise Linux 5 X64 (Enterprise and Standard versions only)
- Red Hat Enterprise Linux 5.5 (Enterprise and Standard versions only)
- Red Hat Enterprise Linux 5.5 X64 (Enterprise and Standard versions only)
- Red Hat Enterprise Linux 5.9 (Enterprise and Standard versions only)
- Red Hat Enterprise Linux 5.9 X64 (Enterprise and Standard versions only)
- Red Hat Enterprise Linux 6.1 X64 (Enterprise and Standard versions only)
- Red Hat Enterprise Linux 6.4 X64 (Enterprise and Standard versions only)

VMware:

- VMware Workstation 6.5.x
- VMware Workstation 9.0.x
- VMware ESX Server 4.x
- VMware ESX Server 5.x

Hyper-V:

- Windows Server 2008 R2 Hyper-V
- Windows Server 2012 Hyper-V

Database:

- Microsoft SQL Server 2008 Service Pack 3 (Windows only)
 - Microsoft SQL Server 2008 R2 Service Pack 2 (Windows only)
 - Microsoft SQL Server 2012 Service Pack 2 (Windows only)
 - Microsoft SQL Server 2014 (Windows only)
 - Oracle 11g Release 1 (Linux only)
 - Oracle 11g Release 2 (Linux only)
 - MySQL Enterprise Server 5.1 (Linux and Windows) (Up to 1000 devices are supported)
 - MySQL Enterprise Server 5.5 (Linux and Windows) (Up to 1000 devices are supported)
 - MySQL Enterprise Server 5.6 (Linux and Windows) (Up to 1000 devices are supported)
-

Browser supported

Refer to the [IMC Enterprise Release Notes](#) for details about browser supported

Notes

Refer to the [IMC Enterprise Release Notes](#) for details about deployment and scalability

Services

Refer to the HP website at hp.com/networking/services for details on the service-level descriptions and product numbers. For details about services and response times in your area, please contact your local HP sales office.

HP Intelligent Management Center Enterprise Software Platform accessories License

License

HP IMC Standard and Enterprise Additional 50-node E-LTU (JG749AAE)
HP IMC Network Traffic Analyzer Software Module Additional 5-node E-LTU (JG751AAE)

Software

HP IMC High Availability Software E-LTU (JG771AAE)
HP IMC User Access Manager Software Module with 50-user E-LTU (JG752AAE)
HP IMC Endpoint Admission Defense Software Module with 50-user E-LTU (JG754AAE)
HP IMC User Behavior Auditor Software Module with 50-user E-LTU (JG760AAE)
HP IMC Wireless Service Manager Software Module with 50-Access Point E-LTU (JF414AAE)
HP IMC TACACS+ Authentication Manager Software Module with 50-node E-LTU (JG764AAE)
HP IMC Application Performance Manager Software Module with 25-monitor E-LTU (JG489AAE)
HP IMC Branch Intelligent Management System Software Module with 50-node E-LTU (JG265AAE)
HP IMC MPLS VPN Software Module with 50-node E-LTU (JF410AAE)
HP IMC IPSec VPN Manager Base LTU (JG144AAE)
HP Intelligent Management Center QoS Manager Software Module E-LTU (JF408AAE)
HP IMC Intelligent Analysis Reporting Module E-LTU (JG138AAE)
HP IMC Service Operation Management Software Module E-LTU (JG139AAE)
HP IMC Service Health Manager Software Module E-LTU (JG398AAE)
HP IMC Remote Site Manager Software Module with E-LTU (JG495AAE)
HP IMC VAN Connection Manager SW Module E-LTU (JG494AAE)
HP IMC VAN Fabric Manager SW Module E-LTU (JG770AAE)
HP IMC VAN Resource Automation Manager Module E-LTU (JG826AAE)
HP IMC VAN Software Defined Networking Manager Module E-LTU (JG827AAE)

Learn more at
hp.com/networking

Sign up for updates
hp.com/go/getupdated



Share with colleagues



Rate this document

© Copyright 2010-2014 Hewlett-Packard Development Company, L.P. The information contained herein is subject to change without notice. The only warranties for HP products and services are set forth in the express warranty statements accompanying such products and services. Nothing herein should be construed as constituting an additional warranty. HP shall not be liable for technical or editorial errors or omissions contained herein.

Microsoft, Windows, and Windows Server are trademarks of the Microsoft Group of companies. Linux is the registered trademark of Linus Torvalds in the U.S. and other countries. VMware is a registered trademark or trademark of VMware, Inc. in the United States and/or other jurisdictions. Oracle is a registered trademark of Oracle and/or its affiliates. Red Hat is a registered trademark of Red Hat, Inc. in the United States and other countries.

