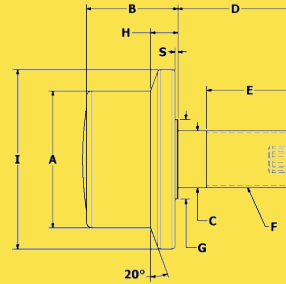
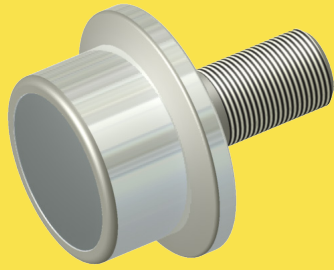


CARTER®

Hi-Roller™ Idler Rollers



Flanged Hi-Roller™ FHR Bearings



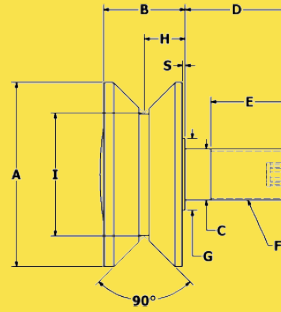
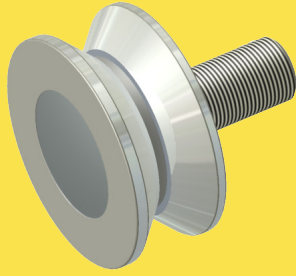
Flanged High Roller

Part Number	Roller		Stud					Other Spec					
	A	B	C	D	E	F	G	H	I	S	Basic Dynamic Rating Pounds	Dynamic Thrust Load* Rating	Max Static Capacity
ID	Roller O.D.	Roller Width	Stud Dia. +.001 -0.000	Stud Length +.030 -.030	Min. Eff. Thread Length	Thread Class	Shlder. Dia.	Flange Width	Flange Dia.	Shlder. Length			
FHR-100	1.000	0.781	0.437	1.000	0.500	7/16-20	0.500	0.219	1.375	0.031	630	140	230
FHR-112	1.125	0.781	0.437	1.000	0.500	7/16-20	0.500	0.219	1.500	0.031	630	140	230
FHR-125	1.250	0.844	0.500	1.250	0.625	1/2-20	0.625	0.219	1.563	0.031	1,350	370	600
FHR-137	1.375	0.844	0.500	1.250	0.625	1/2-20	0.625	0.219	1.688	0.031	1,350	370	600
FHR-150	1.500	1.188	0.625	1.500	0.750	5/8-18	0.750	0.344	2.188	0.062	2,750	1,700	1,100
FHR-175	1.750	1.188	0.750	1.750	0.875	3/4-16	1.000	0.344	2.438	0.062	2,750	1,700	1,100
FHR-200	2.000	1.688	0.875	2.000	1.125	7/8-14	1.000	0.594	2.688	0.062	3,820	2,380	1,620
FHR-225	2.250	1.688	0.875	2.000	1.125	7/8-14	1.000	0.594	2.938	0.062	3,820	2,380	1,620
FHR-250	2.500	1.688	1.000	2.250	1.500	1-14	1.250	0.594	3.188	0.062	5,180	3,185	2,270
FHR-275	2.750	1.688	1.000	2.250	1.500	1-14	1.250	0.594	3.438	0.062	5,180	3,185	2,270
FHR-300	3.000	2.000	1.250	2.500	1.750	1 1/4-12	1.750	0.594	3.938	0.062	14,300	5,790	20,000
FHR-325	3.250	2.000	1.250	2.500	1.750	1 1/4-12	1.750	0.594	4.188	0.062	14,300	5,790	20,000
FHR-350	3.500	2.000	1.250	2.750	1.750	1 1/4-12	1.750	0.594	4.438	0.062	14,300	5,790	20,000
FHR-400	4.000	2.000	1.250	2.750	1.750	1 1/4-12	1.750	0.594	4.938	0.062	14,300	5,790	20,000
FHR-450	4.500	2.000	1.250	2.750	1.750	1 1/4-12	1.750	0.594	5.438	0.062	14,300	5,790	20,000
FHR-500	5.000	3.000	2.000	4.500	3.250	2-12	3.250	0.719	5.938	0.062	35,800	14,200	56,400
FHR-600	6.000	3.000	2.500	5.500	3.250	2 1/2-12	3.250	0.719	6.938	0.062	35,800	14,200	56,400
FHR-700	7.000	3.000	2.500	5.500	3.250	2 1/2-12	3.250	0.719	7.938	0.062	35,800	14,200	56,400
FHR-800	8.000	3.000	2.500	5.500	3.250	2 1/2-12	3.250	0.719	8.938	0.062	35,800	14,200	56,400

Flanged High Roller Eccentric

Part Number	Roller		Stud					Other Spec							
	A	B	D	E	F	G	H	I	L	M	N	S	Basic Dynamic Rating Pounds	Dynamic Thrust Load* Rating	Max Static Capacity
ID	Roller O.D.	Roller Width	Stud Length +.030 -.030	Min. Eff. Thread Length	Thread Class	Shlder. Dia.	Flange Width	Flange Dia.	Ecc. Length +.000 -.010	Ecc. Dia. +.001 -.001	Ecc.	Shlder. Length			
FHRE-100	1.000	0.781	1.000	0.500	7/16-20	0.750	0.219	1.375	0.500	0.625	0.030	0.031	630	140	230
FHRE-112	1.125	0.781	1.000	0.500	7/16-20	0.750	0.219	1.500	0.500	0.625	0.030	0.031	630	140	230
FHRE-125	1.250	0.844	1.250	0.625	1/2-20	0.812	0.219	1.563	0.625	0.687	0.030	0.031	1,350	370	600
FHRE-137	1.375	0.844	1.250	0.625	1/2-20	0.812	0.219	1.688	0.625	0.687	0.030	0.031	1,350	370	600
FHRE-150	1.500	1.188	1.500	0.750	5/8-18	1.125	0.344	2.188	0.730	0.875	0.030	0.062	2,760	680	1,100
FHRE-175	1.750	1.188	1.750	0.875	3/4-16	1.240	0.344	2.438	0.855	1.000	0.030	0.062	2,760	680	1,100
FHRE-200	2.000	1.688	2.000	1.125	7/8-14	1.500	0.594	2.688	0.980	1.187	0.030	0.062	3,830	1,000	1,620
FHRE-225	2.250	1.688	2.000	1.125	7/8-14	1.500	0.594	2.938	0.980	1.187	0.030	0.062	3,830	1,000	1,620
FHRE-250	2.500	1.688	2.250	1.500	1-14	1.687	0.594	3.188	1.105	1.375	0.030	0.062	5,190	1,400	2,270
FHRE-275	2.750	1.688	2.250	1.500	1-14	1.687	0.594	3.438	1.105	1.375	0.030	0.062	5,190	1,400	2,270
FHRE-300	3.000	2.000	2.500	1.750	1 1/4-12	2.312	0.594	3.938	1.230	1.750	0.060	0.062	14,270	12,000	20,000
FHRE-325	3.250	2.000	2.500	1.750	1 1/4-12	2.312	0.594	4.188	1.230	1.750	0.060	0.062	14,270	12,000	20,000
FHRE-350	3.500	2.000	2.750	1.750	1 1/4-12	2.312	0.594	4.438	1.355	1.812	0.060	0.062	14,270	12,000	20,000
FHRE-400	4.000	2.000	2.750	1.750	1 1/4-12	2.312	0.594	4.938	1.355	1.812	0.060	0.062	14,270	12,000	20,000

V-Groove Hi-Roller™ VHR Bearings



V-Groove High Roller

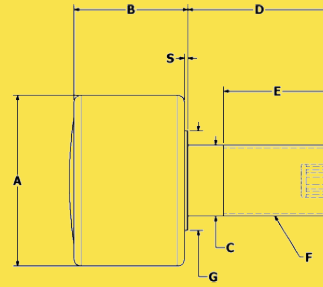
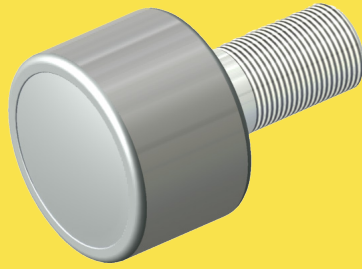
Part Number	Roller		Stud					Other Spec					
	A	B	C	D	E	F	G	H	I	S			
ID	Roller O.D. +.000 -.001	Roller Width	Stud Dia. +.001 -.000	Stud Length +.030 -.030	Min. Eff. Thread Length	Thread Class	Shlder. Dia.	Groove Loc.	Point Dia.	Shlder. Length	Basic Dynamic Rating Pounds	Dynamic Thrust Load* Rating	Max Static Capacity
VHR-150	1.500	0.781	0.437	1.000	0.500	7/16-20	0.500	0.391	1.125	0.031	630	140	230
VHR-250	2.500	1.313	0.750	1.750	0.875	3/4-16	1.000	0.688	1.500	0.062	2,750	1,700	1,100
VHR-350	3.500	1.688	0.875	2.000	1.125	7/8-14	1.000	0.875	2.250	0.062	5,180	3,185	2,270
VHR-450	4.500	2.000	1.250	2.500	1.750	1 1/4-12	1.750	1.000	3.000	0.062	14,300	5,790	20,000
VHR-550	5.000	2.000	1.250	2.750	1.750	1 1/4-12	1.750	1.000	4.000	0.062	14,300	5,790	20,000
VHR-650	6.000	3.000	2.000	4.500	2.500	2-12	3.250	1.500	5.000	0.062	35,800	12,800	56,400
VHR-750	7.000	3.000	2.500	5.500	3.250	2 1/2-12	3.250	1.500	6.000	0.062	35,800	12,800	56,400
VHR-850	8.000	3.000	2.500	5.500	3.250	2 1/2-12	3.250	1.500	7.000	0.062	35,800	12,800	56,400

V-Groove High Roller Eccentric

Part Number	Roller		Stud					Other Spec								
	A	B	C	D	E	F	G	H	I	L	M	N	S			
ID	Roller O.D. +.000 -.001	Roller Width	Stud Dia. +.001 -.000	Stud Length +.030 -.030	Min. Eff. Thread Length	Thread Class	Shlder. Dia.	Groove Loc.	Point Dia.	Ecc. Length +.000 -.010	Ecc. Dia. +.001 -.001	Ecc.	Shlder. Length	Basic Dynamic Rating Pounds	Dynamic Thrust Load* Rating	Max Static Capacity
VHRE-150	1.500	0.781	0.437	1.000	0.500	7/16-20	0.500	0.391	1.125	0.500	0.625	0.030	0.031	630	140	230
VHRE-250	2.500	1.313	0.750	1.750	0.875	3/4-16	1.000	0.688	1.500	0.855	1.000	0.030	0.062	2,760	680	1,100
VHRE-350	3.500	1.688	0.875	2.000	1.125	7/8-14	1.000	0.875	2.250	0.980	1.187	0.060	0.062	5,190	1,400	2,270
VHRE-450	4.500	2.000	1.250	2.500	1.750	1 1/4-12	1.750	1.000	3.000	1.230	1.750	0.060	0.062	14,270	12,000	20,000

Don't see the bearing you want? Call us! We specialize in custom solutions and will work with your design team to make sure you get the features needed for your specific application.

Plain Hi-Roller™ PHR Bearings



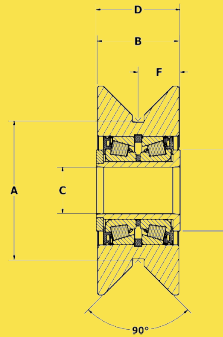
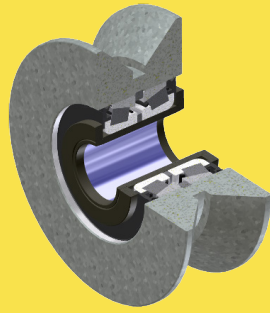
Plain High Roller

Part Number	Roller		Stud					Other Specs			
	A	B	C	D	E	F	G	S	Basic Dynamic Rating Pounds	Dynamic Thrust Load* Rating	Max Static Capacity
ID	Roller O.D. +.000 -.001	Roller Width	Stud Dia. +.001 -.000	Stud Length +.030 -.030	Min. Eff. Thread Length	Thread Class	Shlder. Dia.	Shlder. Length			
PHR-100	1.000	0.781	0.437	1.000	0.500	7/16-20	0.500	0.031	630	140	230
PHR-112	1.125	0.781	0.437	1.000	0.500	7/16-20	0.500	0.031	630	140	230
PHR-125	1.250	0.844	0.500	1.250	0.625	1/2-20	0.625	0.031	1,350	370	600
PHR-137	1.375	0.844	0.500	1.250	0.625	1/2-20	0.625	0.031	1,350	370	600
PHR-150	1.500	1.187	0.625	1.500	0.750	5/8-18	0.750	0.062	2,760	680	1,100
PHR-175	1.750	1.187	0.750	1.750	0.875	3/4-16	1.000	0.062	2,760	680	1,100
PHR-200	2.000	1.687	0.875	2.000	1.125	7/8-14	1.000	0.062	3,830	1,000	1,620
PHR-225	2.250	1.687	0.875	2.000	1.125	7/8-14	1.000	0.062	3,830	1,000	1,620
PHR-250	2.500	1.687	1.000	2.250	1.500	1-14	1.250	0.062	5,190	1,400	2,270
PHR-275	2.750	1.687	1.000	2.250	1.500	1-14	1.250	0.062	5,190	1,400	2,270
PHR-300	3.000	2.000	1.250	2.500	1.750	1 1/4-12	1.750	0.062	14,290	12,000	20,000
PHR-325	3.250	2.000	1.250	2.500	1.750	1 1/4-12	1.750	0.062	14,290	12,000	20,000
PHR-350	3.500	2.000	1.250	2.750	1.750	1 1/4-12	1.750	0.062	14,270	12,000	20,000
PHR-400	4.000	2.000	1.250	2.750	1.750	1 1/4-12	1.750	0.062	14,270	12,000	20,000
PHR-450	4.500	2.000	1.250	2.750	1.750	1 1/4-12	1.750	0.062	14,270	12,000	20,000
PHR-500	5.000	3.000	2.000	4.500	2.500	2-12	2.500	0.062	33,290	32,500	51,900
PHR-600	6.000	3.000	2.500	5.500	3.250	2 1/2-12	3.250	0.062	35,840	33,100	56,400
PHR-700	7.000	3.000	2.500	5.500	3.250	2 1/2-12	3.250	0.062	35,840	33,100	56,400
PHR-800	8.000	3.000	2.500	5.500	3.250	2 1/2-12	3.250	0.062	35,840	33,100	56,400
PHR-1000	10.000	3.000	2.500	5.500	3.250	2 1/2-12	3.250	0.062	35,840	33,100	56,400

Plain High Roller Eccentric

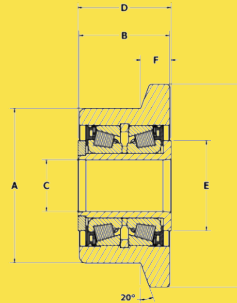
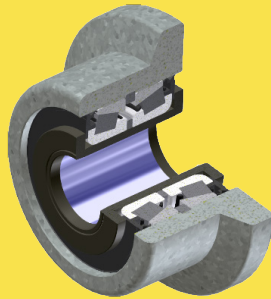
Part Number	Roller					Other Specs							
	A	B	D	E	F	G	L	M	N	S	Basic Dynamic Rating Pounds	Dynamic Thrust Load* Rating	Max Static Capacity
ID	Roller O.D. +.000 -.001	Roller Width	Stud Length +.030 -.030	Min. Eff. Thread Length	Thread Class	Shlder. Dia.	Ecc. Length +.001 -.010	Ecc. Dia. +.001 -.001	Ecc.	Shlder. Length			
PHRE-100	1.000	0.781	1.000	0.500	7/16-20	0.750	0.500	0.625	0.030	0.031	630	140	230
PHRE-112	1.125	0.781	1.000	0.500	1/2-20	0.750	0.500	0.625	0.030	0.031	630	140	230
PHRE-125	1.250	0.844	1.250	0.625	1/2-20	0.812	0.625	0.687	0.030	0.031	1,350	370	600
PHRE-137	1.375	0.844	1.250	0.625	5/8-18	0.812	0.625	0.687	0.030	0.031	1,350	370	600
PHRE-150	1.500	1.188	1.500	0.750	5/8-18	1.125	0.730	0.875	0.030	0.062	2,760	680	1,100
PHRE-175	1.750	1.188	1.750	0.875	3/4-16	1.240	0.855	1.000	0.030	0.062	2,760	680	1,100
PHRE-200	2.000	1.688	2.000	1.125	7/8-14	1.500	0.980	1.187	0.030	0.062	3,830	1,000	1,620
PHRE-225	2.250	1.688	2.000	1.125	7/8-14	1.500	0.980	1.187	0.030	0.062	3,830	1,000	1,620
PHRE-250	2.500	1.688	2.250	1.500	1-14	1.687	1.105	1.375	0.030	0.062	5,190	1,400	2,270
PHRE-275	2.750	1.688	2.250	1.500	1-14	1.687	1.105	1.375	0.030	0.062	10,880	4,570	7,630
PHRE-300	3.000	2.000	2.500	1.750	1 1/4-12	2.312	1.230	1.750	0.060	0.062	5,190	1,400	2,270
PHRE-325	3.250	2.000	2.500	1.750	1 1/4-12	2.312	1.230	1.750	0.060	0.062	14,270	12,000	20,000
PHRE-350	3.500	2.000	2.750	1.750	1 1/4-12	2.312	1.355	1.812	0.060	0.062	14,270	12,000	20,000
PHRE-400	4.000	2.000	2.750	1.750	1 1/4-12	2.312	1.355	1.812	0.060	0.062	14,270	12,000	20,000
PHRE-450	4.500	2.000	2.750	1.750	1 1/4-12	2.312	2.125	2.625	0.060	0.062	14,270	12,000	20,000
PHRE-500	5.000	3.000	4.500	2.500	2-12	3.250	2.125	2.625	0.060	0.062	33,290	32,500	51,900
PHRE-600	6.000	3.000	5.500	3.250	2 1/2-12	3.625	2.875	3.125	0.060	0.062	35,840	33,100	56,400

Yoke Style Hi-Rollers™



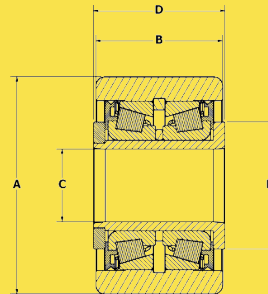
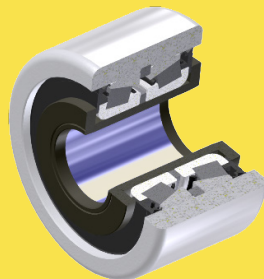
V-Grooved Yoke High Roller

Part Number	Roller					Other Specs			
	A	B	C	D	E	F			
ID	Roller O.D. +0.000 -0.001	Roller Width +0.000 -0.005	Bore Dia. +0.0005/ -0.0000	Total Width +0.005 -0.010	Shoulder Ref. Dia.	Groove Location Ref.	Max Static Capacity	Basic Dynamic Rating Pounds	Thrust Capacity
VHRY-375-A	2.500	1.500	0.750	1.562	1 1/4	25/32	7,630	10,880	4,570
VHRY-450-A	3.000	1.750	1.000	1.812	1 3/4	29/32	20,000	14,270	12,000



Flanged Yoke High Roller

Part Number	Roller						Other Specs			
	A	B	C	D	E	F	G			
ID	Roller O.D. +0.000 -0.001	Roller Width +0.000 -0.005	Bore Dia. +0.0005/ -0.0000	Total Width +0.005 -0.010	Shoulder Ref. Dia.	Flange Ref. Thickness	Flange Ref. Dia.	Max Static Capacity	Basic Dynamic Rating Pounds	Thrust Capacity
FHRY-250-A	2.500	1.500	0.750	1.562	1 1/4	1/2	3 3/16	7,630	10,880	4,570
FHRY-300-A	3.000	1.750	1.000	1.812	1 3/4	23/39	3 15/16	20,000	14,270	12,000



Plain Yoke High Roller

Part Number	Roller				Other Specs			
	A	B	C	D	E			
ID	Roller O.D. +0.000 -0.001	Roller Width +0.000 -0.005	Bore Dia. +0.0005/ -0.0000	Total Width +0.005 -0.010	Shoulder Ref. Dia.	Max Static Capacity	Basic Dynamic Rating Pounds	Thrust Capacity
PHRY-250-A	2.500	1.500	0.750	1.562	1 1/4	21,140	8,090	4,570
PHRY-300-A	3.000	1.750	1.000	1.812	1 3/4	20,000	14,270	12,000



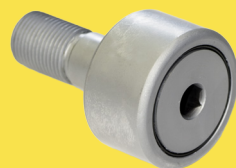
Standard Cam Followers and Cam Yoke Rollers

Carter's standard bearings are available as sealed bearings with a slotted head, a hexagonal socket, a heavy duty stud, eccentric stud or a crowned O.D.



Xtenda™ Stainless Steel

Made completely from 440c stainless steel and utilizing food grade grease, our Xtenda™ line meets FDA requirements and extends bearing life through frequent wash-downs.



Chrome Plated

Chrome plated cam followers and yoke rollers contain stainless steel needles and offer higher corrosion and wear resistance than a standard bearing.



Polyurethane Coated

Our comprehensive line of poly-coated bearings can be used in applications where noise reduction, reduced wear and non-marking are important factors.



Neverlube Cam Followers and Cam Yoke Rollers

The Neverlube line is an economical sintered bushing design with large lube reservoirs for dependable long-term performance.



Made in the USA for over 50 years