



Education Network Solutions Product Guide for E-Rate

Reliable school networks made simple

COMMSCOPE®
RUCKUS® | SYSTIMAX®

version .1

Why choose CommScope for your school project?

As your school continues its digital transformation to 1:1 mobile learning, CommScope helps you address the top three challenges of school IT: network scaling, securing student data privacy, and network reliability for digital instruction.

The digital classroom of tomorrow promises an outstanding education. Is your network ready?

The classroom of tomorrow promises an outstanding education. Blended learning, digital curriculum and other modern learning models can better engage students and help educators be more effective.

With this digital transformation, lesson plans now depend on consistent, reliable connectivity to the school's network. Instead of leaving tools locked in the classroom, students walk in the door with their laptops, tablets or other devices every morning, and take them home with them each night.

As such, there are three major concerns that school IT administrators are currently facing.

NETWORK AND BROADBAND SCALING



THE TOP PRIORITY FOR IT IS BROADBAND AND NETWORK CAPACITY.

More devices are coming onto the network, stretching the limits of aging infrastructure. SETDA recommends 10Gbps per 1000 students by 2020-21. Plan for growth, not rip-and-replace.

SECURITY AND STUDENT DATA PRIVACY



FACING THE TASK OF PROTECTING STUDENT DATA FROM MISUSE OR BREACH.

Buying or receiving 1:1 computers for digital learning will require schools to securely on-board devices for student data privacy.

TRANSITION TO DIGITAL LEARNING



THE TRANSITION FROM TEXT-BASED CURRICULA TO BLENDED LEARNING.

Reliable connectivity is critical for classroom and distance learning. Cloud managed networks combined with network analytics can reduce digital downtime.

Education Solutions for E-Rate

Expectations for your communications network have never been higher, as both students and teachers engage in new ways. To keep up with this demand, the communication infrastructure must be up to the task. That's where CommScope solutions can help your communications network do more—and do it better.

CommScope's communications infrastructure solutions are built to make your communications network simpler to deploy and manage, improve its reliability, and give it the adaptability to evolve as students and teachers' requirements change.

Our Education Network solutions portfolio for E-Rate covers every connection and cable, from copper and fiber structured cabling to the latest Wi-Fi 6 access points, high capacity switching and the best in control management using cloud or on-prem. CommScope is the only vendor who can fully support your entire communications network for your school, home, and community.

CommScope's portfolio of products will provide you with the most reliable networks made simple.



FUTURE PROOF

Our ICX access switch uplinks can be upgraded without replacing the switch. We also support stacking up to 12 switches, while Campus Fabric supports up to 36 switches with a single point of management. Our flexible switch deployment options include standalone, stacking and Campus Fabric (with the same switches). With RUCKUS Cloud, you can easily add in RUCKUS Wi-Fi AP's and switches, or Internet of Things (IoT) infrastructure. For the latter two, simply plug into pre-existing RUCKUS Wi-Fi AP's – without having to rip and replace!



WIRED AND WIRELESS NETWORK MANAGEMENT

With RUCKUS SmartZone Network Controllers, it is possible to manage both your wired and wireless network using a single network element. SmartZone network controllers simplify network set-up and management, enhance security, minimize troubleshooting and ease upgrades, and ensure provisioning consistency across networks built on RUCKUS access points and switches.



HIGH PERFORMANCE NETWORK CABLING

The Foundation for a high performance network is the structured cabling infrastructure. This is required to support your networks bandwidth, capacity and power requirements. CommScope Cat 6A copper cabling ensures your structured cabling infrastructure is ready and able to support 10Gig speeds and High Powered PoE. CommScope's fiber solutions also provide the scalable bandwidth you need for your network backbone and for high performance applications in education, VR and Wi-Fi 6 AP's.

Education Solutions for E-Rate

Wireless Technology

Indoor and outdoor Wi-Fi (access points with Wi-Fi 6 that enables high device density, high-quality video, IoT sensors and cloud-managed control)

Mobile Hotspot (mobile-wireless access point is designed to leverage LTE networks as a backhaul and provide outdoor coverage)

Fiber and Copper Cabling

Cat 6A and Powered Fiber (indoor and outdoor cabling to connect security cameras, sensors and small cells)

Switching Technology

Multigigabit stackable switches with PoE (delivers high-end routing and security capabilities suitable for any school or district network)

Cloud-Managed Solutions

SaaS offerings (Cloudpath ES, RUCKUS Cloud Network Monitoring, IoT Networking, RUCKUS SPoT, RUCKUS Analytics)

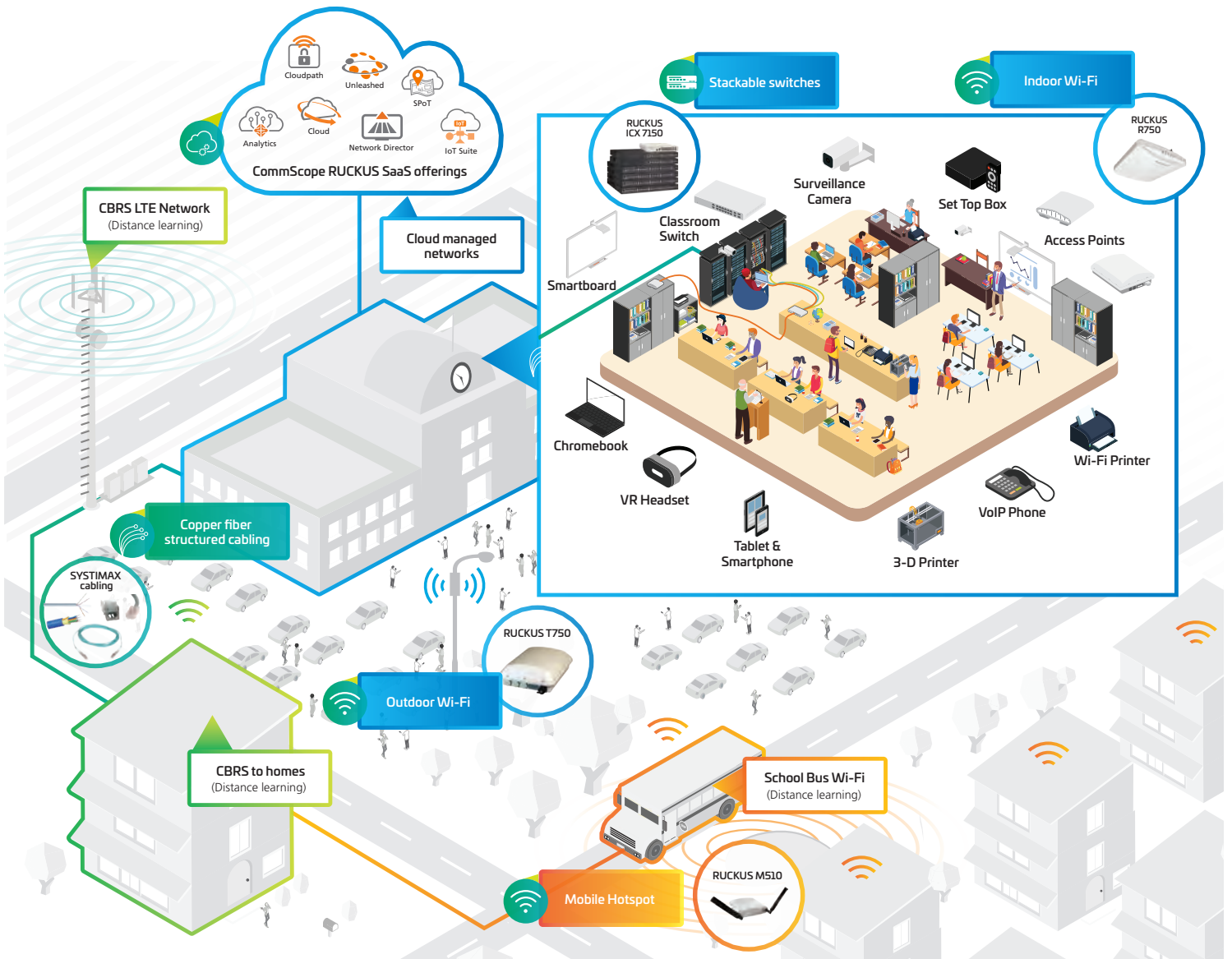


Table of contents

SYSTIMAX®

Fiber Solutions for E-Rate	9
Optical Fiber Cables	9
Premises Distribution Cables.....	10
Indoor/outdoor Cables	11
All-dry Outside Plant Cables	14
Outside Plant Composite Fiber Cables	15
Fiber Panel Portfolios	16
G2 Family.....	16
G2 Adapter Packs	17
G2 Modules.....	18
G2 Pigtail Cassettes.....	20
G2 Wall Boxes and Accessories.....	21
EHD Fiber Solutions.....	22
CHD Fiber Solutions	24
Specialty Solutions	27
Fiber Connectivity for E-Rate.....	29
QWIK-FUSE Connector Kits, Tool Kits and Accessories	29
QWIK II Connector Kits	30
Fiber Optic Connectors	32
Fiber Optic Adapters	33
Faceplate Adapters	34
Splice Wallet Kits	34
Fiber Cleaning and Inspection Kits	35
Fiber Breakout Kits	35
Consumables	35
Fiber Cable Clamps	35
Modular Panels for E-Rate.....	36
SYSTIMAX 360™ Modular Panels	36
M-Series Modular Panels.....	36
Copper solutions for E-Rate.....	37
Category 6A Products.....	37
GigaSPEED® X10D U/UTP Copper Cables.....	37
GigaSPEED X10D UTP Panels.....	38
GigaSPEED X10D UTP Information Outlets	39
GigaSPEED X10D UTP Patch Cords	39
Ceiling Connector Assemblies	39
GigaSPEED X10D FTP Copper Cables.....	40
GigaSPEED X10D Shielded High Density Information Outlet	40
GigaSPEED X10D G10SP Modular Patch Cords.....	40
GigaSPEED X10D Evolve High Density Shielded Modular Panels.....	41

Table of contents

Category 6 Products	42
GigaSPEED® XL UTP Copper Cables	42
GigaSPEED XL Panels.....	43
GigaSPEED XL Information Outlets	44
GigaSPEED XL Patch Cords.....	44
Ceiling Connector Assemblies	44
Category 5e Products	45
PowerSUM U/UTP Copper Cables.....	45
PowerSUM Patch Panels.....	46
PowerSUM Information Outlets.....	47
PowerSUM Patch Cords	47
Faceplates for E-Rate.....	48
Cable Management for E-Rate	52
19" Equipment Racks.....	52
Filler Panels	52
Horizontal Cable Management.....	53
Cable Managers.....	53
Vertical Cable Management	54

RUCKUS®

Access Points for E-Rate.....	56
Indoor Access Points	56
Outdoor Access Points.....	57
T710	57
T750	57
T650	58
T350	58
T310	59
ICX Switches for E-Rate.....	60
ICX 7150 – Compact.....	60
ICX 7150	60
ICX 7150 Z-Series.....	62
ICX 7250	62
ICX 7450	63
ICX 7550	64
ICX 7650	65
ICX 7750	66
ICX 7850	66

Table of contents

Accessories for E-Rate.....	67
Accessories (Optics, Cables, Connectors & Power Cords).....	67
Software, Licenses, and Services for E-Rate	69
SmartZone.....	69
Virtual SmartZone.....	69
SmartZone Data Plane and Virtual Data Plane	70
ZoneDirector.....	71
RUCKUS Cloud.....	71
RUCKUS Cloud Bundle	73
RUCKUS Analytics.....	74
Watchdog Remote Support for ICX.....	74
Watchdog Support for Unleashed Access Points.....	75
Education Watchdog Support for ZoneDirector 1205.....	75

APPENDIX

SYSTIMAX ULL Preterminated Trunk Cables	76
SYSTIMAX ULL Preterminated Trunk & Fanout Cables	77
SYSTIMAX ULL Array Cords	78
SYSTIMAX ULL Patch Cords	79
SYSTIMAX Uniboot ULL Patch Cords.....	81
SYSTIMAX InstaPatch 360 Trunk Cables.....	82
SYSTIMAX InstaPatch 360 Array Cords	83
SYSTIMAX Fiber Optic Patchcords & Pigtails	84
InstaPATCH® Cu Configurator.....	87

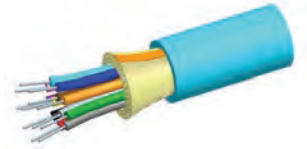


SYSTEMAX[®]

Optical Fiber Cables for E-Rate

Indoor Premises Distribution Fiber Cables

Distribution cables are color coded 900um tight buffered fibers for easy connectorization. Fiber counts above 24 are unitized for manageability. All fiber types are bend insensitive. Single mode fiber is ITU-T G.657.A1 compliant, as well as backwards compatible to G.652.D.



ALL-DIELECTRIC (NON-ARMORED)

Fiber Count	OM3		OM4		OM5		Singlemode		E-Rate Eligibility	E-Rate Category
	Material ID	Product Number	Material ID	Product Number	Material ID	Product Number	Material ID	Product Number		
RISER										
6	700208143	R-006-DS-5L-FSUAQ	760012104	R-006-DS-5K-FSUAQ	760229724	R-006-DS-5G-FSULM	760004424	R-006-DS-8W-FSUYL	100%	Cat 2 (IC, MIBS)
12	700208150	R-012-DS-5L-FSUAQ	760012112	R-012-DS-5K-FSUAQ	760229740	R-012-DS-5G-FSULM	760004440	R-012-DS-8W-FSUYL		
24	760018556	R-024-DS-5L-FSUAQ	760018564	R-024-DS-5K-FSUAQ	760229765	R-024-DS-5G-FSULM	760018515	R-024-DS-8W-FSUYL		
36	700208176	R-036-DS-5L-FMUAQ	760026831	R-036-DS-5K-FMUAQ	760229773	R-036-DS-5G-FMULM	760152496	R-036-DS-8W-FMUYL		
48	700208218	R-048-DS-5L-FMUAQ	760026849	R-048-DS-5K-FMUAQ	760229781	R-048-DS-5G-FMULM	760004473	R-048-DS-8W-FMUYL		
PLENUM										
6	700009772	P-006-DS-5L-FSUAQ	760012138	P-006-DS-5K-FSUAQ	760229377	P-006-DS-5G-FSULM	760004333	P-006-DS-8W-FSUYL	100%	Cat 2 (IC, MIBS)
12	700009731	P-012-DS-5L-FSUAQ	760006411	P-012-DS-5K-FSUAQ	760229393	P-012-DS-5G-FSULM	760004358	P-012-DS-8W-FSUYL		
24	760018689	P-024-DS-5L-FSUAQ	760018697	P-024-DS-5K-FSUAQ	760229419	P-024-DS-5G-FSULM	760018630	P-024-DS-8W-FSUYL		
36	700009673	P-036-DS-5L-FMUAQ	760024547	P-036-DS-5K-FMUAQ	760229427	P-036-DS-5G-FMULM	760004374	P-036-DS-8W-FMUYL		
48	760163022	P-048-DS-5L-FMUAQ	760024554	P-048-DS-5K-FMUAQ	760229435	P-048-DS-5G-FMULM	760004382	P-048-DS-8W-FMUYL		

Optical Fiber Cables for E-Rate Indoor Premises Distribution Fiber Cables

Distribution cables are color coded 900um tight buffered fibers for easy connectorization. Fiber counts above 24 are unitized for manageability. All fiber types are bend insensitive. Single mode fiber is ITU-T G.657.A1 compliant, as well as backwards compatible to G.652.D.



INTERLOCKING ARMORED										
Fiber Count	OM3		OM4		OM5		Singlemode		E-Rate Eligibility	E-Rate Category
	Material ID	Product Number	Material ID	Product Number	Material ID	Product Number	Material ID	Product Number		
RISER										
6	760127175	R-006-DZ-5L-FSUAQ	760127506	R-006-DZ-5K-FSUAQ	760229856	R-006-DZ-5G-FSULM	760127308	R-006-DZ-8W-FSUYL	100%	Cat 2 (IC, MIBS)
12	760127183	R-012-DZ-5L-FSUAQ	760127514	R-012-DZ-5K-FSUAQ	760229872	R-012-DZ-5G-FSULM	760127316	R-012-DZ-8W-FSUYL		
24	760127381	R-024-DZ-5L-FSUAQ	760127407	R-024-DZ-5K-FSUAQ	760229898	R-024-DZ-5G-FSULM	760127373	R-024-DZ-8W-FSUYL		
36	760127191	R-036-DZ-5L-FMUAQ	760126532	R-036-DZ-5K-FMUAQ	760229906	R-036-DZ-5G-FMULM	760127332	R-036-DZ-8W-FMUYL		
48	760127209	R-048-DZ-5L-FMUAQ	760126540	R-048-DZ-5K-FMUAQ	760229914	R-048-DZ-5G-FMULM	760127340	R-048-DZ-8W-FMUYL		
PLENUM										
6	760127639	P-006-DZ-5L-FSUAQ	760128181	P-006-DZ-5K-FSUAQ	760229492	P-006-DZ-5G-FSULM	760127795	P-006-DZ-8W-FSUYL	100%	Cat 2 (IC, MIBS)
12	760127647	P-012-DZ-5L-FSUAQ	760128017	P-012-DZ-5K-FSUAQ	760229518	P-012-DZ-5G-FSULM	760127803	P-012-DZ-8W-FSUYL		
24	760127902	P-024-DZ-5L-FSUAQ	760127910	P-024-DZ-5K-FSUAQ	760229534	P-024-DZ-5G-FSULM	760127886	P-024-DZ-8W-FSUYL		
36	760127662	P-036-DZ-5L-FMUAQ	760128074	P-036-DZ-5K-FMUAQ	760229542	P-036-DZ-5G-FMULM	760127829	P-036-DZ-8W-FMUYL		
48	760127670	P-048-DZ-5L-FMUAQ	760125971	P-048-DZ-5K-FMUAQ	760229559	P-048-DZ-5G-FMULM	760127837	P-048-DZ-8W-FMUYL		

Optical Fiber Cables for E-Rate
 Indoor/Outdoor Fiber Cables



TIGHT BUFFERED - ALL-DIELECTRIC (NON-ARMORED)

Fiber Count	OM3		OM4		Singlemode		E-Rate Eligibility	E-Rate Category
	Material ID	Product Number	Material ID	Product Number	Material ID	Product Number		
RISER								
12	700210982	Z-012-DS-5L-FSUBK/D	760006650	Z-012-DS-5K-FSUBS/K/D	760004184	Z-012-DS-8W-FSUBK/D	100%	Cat 2 (IC, MIBS)
24	760070292	Z-024-DS-5L-FSUBK/D	760070300	Z-024-DS-5K-FSUBK/D	760070276	Z-024-DS-8W-FSUBK/D		
48	760010371	Z-048-DS-5L-FMUBK/C	760130864	Z-048-DS-5K-FMUBK/C	760090309	Z-048-DS-8W-FMUBK/C		
72	760019612	Z-072-DS-5L-FMUBK/B2	760150961	Z-072-DS-5K-FMUBK/B2	760067595	Z-072-DS-8W-FMUBK/B2		
PLENUM								
12	760037374	P-012-OD-5L-FSUBK	760037432	P-012-OD-5K-FSUBK	760037192	P-012-OD-8W-FSUBK	100%	Cat 2 (IC, MIBS)
24	760037390	P-024-OD-5L-FSUBK	760037457	P-024-OD-5K-FSUBK	760037218	P-024-OD-8W-FSUBK		
48	760038083	P-048-OD-5L-FMUBK	760038141	P-048-OD-5K-FMUBK	760037903	P-048-OD-8W-FMUBK		
72	760038109	P-072-OD-5L-FMUBK	760038166	P-072-OD-5K-FMUBK	760037929	P-072-OD-8W-FMUBK		



TIGHT BUFFERED - INTERLOCKING ARMORED

Fiber Count	OM4		Singlemode		E-Rate Eligibility	E-Rate Category
	Material ID	Product Number	Material ID	Product Number		
RISER						
12	760164046	Z-012-DZ-5K-FSUBK/B2	760134759	Z-012-DZ-8W-FSUBK/B2	100%	Cat 2 (IC, MIBS)
24	760140525	Z-024-DZ-5K-FSUBK/B2	760134858	Z-024-DZ-8W-FSUBK/B2		
48	760239118	Z-048-DZ-5K-FMUBK/B2	760134833	Z-048-DZ-8W-FMUBK/B2		
PLENUM						
12	760171470	P-012-OZ-5K-FSUBK	760134924	P-012-OZ-8W-FSUBK	100%	Cat 2 (IC, MIBS)
24	760134981	P-024-OZ-5K-FSUBK	760134932	P-024-OZ-8W-FSUBK		
48	760149203	P-048-OZ-5K-FMUBK	760134957	P-048-OZ-8W-FMUBK		

Optical Fiber Cables for E-Rate Indoor/Outdoor Stranded Loose Tube Cables

Indoor/outdoor cables are tough enough for outdoor use while also being listed for indoor use. Stranded Loose Tube I/O cables contain S-Z stranded gel-free buffer tubes with twelve 250um colored fibers per color coded tube.



ALL-DIELECTRIC (NON-ARMORED)								
Fiber Count	OM3		OM4		Singlemode		E-Rate Eligibility	E-Rate Category
	Material ID	Product Number	Material ID	Product Number	Material ID	Product Number		
RISER								
12	760136036	R-012-LN-5L-F12BK/25D	760101295	R-012-LN-5K-F12BK/25D	760086371	R-012-LN-8W-F12BK/25D	100%	Cat 2 (IC, MIBS)
24	760086413	R-024-LN-5L-F12BK/25D	760101303	R-024-LN-5K-F12BK/25D	760086405	R-024-LN-8W-F12BK/25D		
48	760136044	R-048-LN-5L-F12BK/25D	760228247	R-048-LN-5K-F12BK/25D	760086470	R-048-LN-8W-F12BK/25D		
72	760130062	R-072-LN-5L-F12BK/25D	760101329	R-072-LN-5K-F12BK/25D	760086538	R-072-LN-8W-F12BK/25D		
96	760130930	R-096-LN-5L-F12BK/25D	760242106	R-096-LN-5K-F12BK/25D	760086561	R-096-LN-8W-F12BK/25D		
144	760136051	R-144-LN-5L-F12BK/25D	760139980	R-144-LN-5K-F12BK/25D	760086652	R-144-LN-8W-F12BK/25D		
PLENUM								
12	760106914	P-012-LN-5L-F12BK/25D	760107805	P-012-LN-5K-F12BK/25D	760106880	P-012-LN-8W-F12BK/25D	100%	Cat 2 (IC, MIBS)
24	760094953	P-024-LN-5L-F12BK/25D	760106807	P-024-LN-5K-F12BK/25D	760106922	P-024-LN-8W-F12BK/25D		
48	760094995	P-048-LN-5L-F12BK/25D	760103531	P-048-LN-5K-F12BK/25D	760094961	P-048-LN-8W-F12BK/25D		
72	760095026	P-072-LN-5L-F12BK/25D	760105536	P-072-LN-5K-F12BK/25D	760095000	P-072-LN-8W-F12BK/25D		
96	760095059	P-096-LN-5L-F12BK/25D	760105700	P-096-LN-5K-F12BK/25D	760095034	P-096-LN-8W-F12BK/25D		
144	760095083	P-144-LN-5L-F12BK/25D	760139998	P-144-LN-5K-F12BK/25D	760095067	P-144-LN-8W-F12BK/25D		

Optical Fiber Cables for E-Rate
 Indoor/Outdoor Stranded Loose Tube Cables



INTERLOCKING ARMORED								
Fiber Count	OM3		OM4		Singlemode		E-Rate Eligibility	E-Rate Category
	Material ID	Product Number	Material ID	Product Number	Material ID	Product Number		
RISER								
12	760130955	R-012-LZ-5L-F12BK/25D	760149534	R-012-LZ-5K-F12BK/25D	760120261	R-012-LZ-8W-F12BK/25D	100%	Cat 2 (IC, MIBS)
24	760130963	R-024-LZ-5L-F12BK/25D	760239119	R-024-LZ-5K-F12BK/25D	760130088	R-024-LZ-8W-F12BK/25D		
48	760130989	R-048-LZ-5L-F12BK/25D	760171488	R-048-LZ-5K-F12BK/25D	760132670	R-048-LZ-8W-F12BK/25D		
PLENUM								
12	760162883	P-012-LZ-5L-F12BK/25D			760140475	P-012-LZ-8W-F12BK/25D	100%	Cat 2 (IC, MIBS)
24	760164749	P-024-LZ-5L-F12BK/25D	760164764	P-024-LZ-5K-F12BK/25D	760140939	P-024-LZ-8W-F12BK/25D		
48	760169722	P-048-LZ-5L-F12BK/25D	760199109	P-048-LZ-5K-F12BK/25D	760175232	P-048-LZ-8W-F12BK/25D		

Optical Fiber Cables for E-Rate

All Dry Outside Plant Cables

The OSP cables are S-Z stranded gel-free loose tube cables with twelve 250um colored fibers per color coded buffer tube.



ALL-DIELECTRIC (NON-ARMORED)

Fiber Count	OM3		OM4		Singlemode		E-Rate Eligibility	E-Rate Category
	Material ID	Product Number	Material ID	Product Number	Material ID	Product Number		
12	760054171	D-012-LN-5L-F12NS	760054288	D-012-LN-5K-F12NS	760053843	D-012-LN-8W-F12NS	100%	Cat 2 (IC, MIBS)
24	760054189	D-024-LN-5L-F12NS	760054296	D-024-LN-5K-F12NS	760053850	D-024-LN-8W-F12NS		
48	760054205	D-048-LN-5L-F12NS	760054312	D-048-LN-5K-F12NS	760053876	D-048-LN-8W-F12NS		



ARMORED

Fiber Count	OM3		OM4		Singlemode		E-Rate Eligibility	E-Rate Category
	Material ID	Product Number	Material ID	Product Number	Material ID	Product Number		
12	760053629	D-012-LA-5L-F12NS	760053736	D-012-LA-5K-F12NS	760053280	D-012-LA-8W-F12NS	100%	Cat 2 (IC, MIBS)
24	760053637	D-024-LA-5L-F12NS	760053744	D-024-LA-5K-F12NS	760053298	D-024-LA-8W-F12NS		
48	760053652	D-048-LA-5L-F12NS	760053769	D-048-LA-5K-F12NS	760053314	D-048-LA-8W-F12NS		
72	760053678	D-072-LA-5L-F12NS	760053785	D-072-LA-5K-F12NS	760053330	D-072-LA-8W-F12NS		

Optical Fiber Cables for E-Rate Outside Plant Composite Fiber Cables (MM +SM in same cable)

Composite cables are useful when running different network speeds, ie, data and building automation control/access control. Instead of running two cables with different fiber types, composite cables allow you to run one cable that contains multiple fiber types.

NOTE: Other cable constructions available; contact your Customer Service Representative for more information.



ALL-DIELECTRIC (NON-ARMORED)

Fiber Count	Material ID	Product Number	Description	E-Rate Eligibility	E-Rate Category
24	760175588	D-024-LN-CM-F12NS/8W012/5K012	Contains 12 Single Mode and 12 OM4 fibers	100%	Cat 2 (IC, MIBS)
24	760141655	D-024-LN-CM-F12NS/8W012/5L012	Contains 12 Single Mode and 12 OM3 fibers		
48	760166207	D-048-LN-CM-F12NS/8W024/5K024	Contains 24 Single Mode and 24 OM4 fibers		
48	760140731	D-048-LN-CM-F12NS/8W024/5L024	Contains 24 Single Mode and 24 OM3 fibers		
72	760229625	D-072-LN-CM-F12NS/8W036/5K036	Contains 36 Single Mode and 36 OM4 fibers		
72	760161687	D-072-LN-CM-F12NS/8W036/5L036	Contains 36 Single Mode and 36 OM3 fibers		



ARMORED

Fiber Count	Material ID	Product Number	Description	E-Rate Eligibility	E-Rate Category
24	760101360	D-024-LA-CM-F12NS/8W012/5K012	Contains 12 Single Mode and 12 OM4 fibers	100%	Cat 2 (IC, MIBS)
24	760163741	D-024-LA-CM-F12NS/8W012/5L012	Contains 12 Single Mode and 12 OM3 fibers		
48	760154633	D-048-LA-CM-F12NS/8W024/5K024	Contains 24 Single Mode and 24 OM4 fibers		
48	760154690	D-048-LA-CM-F12NS/8W024/5L024	Contains 24 Single Mode and 24 OM3 fibers		
72	760142752	D-072-LA-CM-F12NS/8W036/5K036	Contains 36 Single Mode and 36 OM4 fibers		
72	760091066	D-072-LA-CM-F12NS/8W036/5L036	Contains 36 Single Mode and 36 OM3 fibers		

Fiber Panel Portfolios for E-Rate G2 Family

The G2 family of panels and modules is a versatile solution that is available in configurations for any application. No matter what polarity, fiber count or performance needed; the G2 family has a solution. Our G2 family modules fit into any AGL, HD or UD panels offering density up to 72f duplex LC or 48f MPO adding flexibility to any configuration.

The following high-level overview provides details of the AGL, HD and UD panels and associated modules and components.

G2 PANELS						
Series	Density	Concept	Material ID	Description	E-Rate Eligibility	E-Rate Category
AGL - AGILE Simple & Cost Effective	96 LC/RU 32 MPO/RU	Open Rear Fixed	760241517	AGL-1U-FX	100%	Cat 2 (IC, MIBS)
			760241518	AGL-1U-ANG-FX		
		Open Rear Sliding	760242453	AGL-1U-SL		
			760242454	AGL-1U-ANG-SL		
		Basic 2-Piece Drawer	760242455	AGL-1U-DRW-SL		
		Basic Enclosed Fixed	760242475	AGL-1U-ENC-FX		
Basic Enclosed Sliding	760242476	AGL-1U-ENC-SL				
HD - High Density Premium Features	96 LC/RU 32 MPO/RU	Standard Fixed	760210732	HD-1U-FX		
			760210740	HD-2U-FX		
			760210757	HD-4U-FX		
		Standard Sliding	760209940	HD-1U		
			760209957	HD-2U		
			760209965	HD-4U		
		Standard w/Splicing	760231506	HD-1U-SP		
			760231514	HD-2U-SP		
			760231522	HD-4U-SP		
UD - Ultra Density Premium Features	144 LC/RU 48 MPO/RU	Premium Sliding	760227306	UD-2U		
			760227314	UD-4U		

AGL, HD and UD Panels

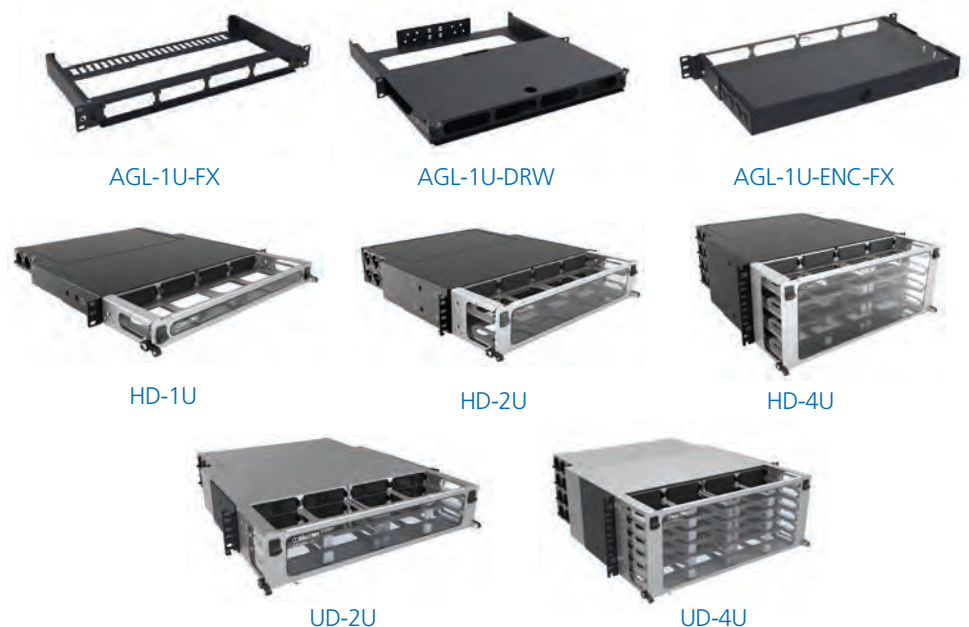
The AGL, HD and UD fiber panels support the G2 style module and adapter panels, which are backwards compatible with previous hardware such as the InstaPATCH360 and 360G2 fiber panels.

The HD and UD panels also both support intelligence through the Automated Infrastructure Management (AIM) imVision solution. Please download the [imVision Solutions Guide](#) for more information.

The AGL panel is a low cost solution for usable density in a 1U format.

The HD (High Density) panel is available in 1U, 2U and 4U sizes, and supports high density applications in data centers and buildings.

The UD (Ultra Density) panel is designed for even higher density applications and is available in 2U and 4U sizes.



Fiber Panel Portfolios for E-Rate
 G2 Adapter Packs



360DPis-24LC-LS

G2 ADAPTER PACKS						
	12 Fiber		24 Fiber		E-Rate Eligibility	E-Rate Category
	Material ID	Description	Material ID	Description		
LC Multimode (OM3-OM4)	760230938	360DPis-12LC-LS	760216754	360DPis-24LC-LS	100%	Cat 2 (IC, MIBS)
LC Multimode (OM5)	760236043	360DPis-12LC-WB	760236041	360DPis-24LC-WB		
LC Singlemode	760230946	360DPis-12LC-SM	760216762	360DPis-24LC-SM		
LC Singlemode APC	760230961	360DPis-12LCA-SM	760216770	360DPis-24LCA-SM		
SC Multimode (OM3-OM4)	760134551	360DP-12SC-LS	X	X		
SC Singlemode	760135087	360DP-12SC-SM	X	X		
SC Singlemode APC	760135095	360DP-12SCA-SM	X	X		



360DP-2MPO



360DP-4MPO



360DP-6MPO



360DP-8MPO

G2 MPO ADAPTER PACKS				
	Material ID	Description	E-Rate Eligibility	E-Rate Category
2 MPO	760107490	360DP-2MPO	100%	Cat 2 (IC, MIBS)
4 MPO	760107508	360DP-4MPO		
6 MPO	760107516	360DP-6MPO		
8 MPO	760107524	360DP-8MPO		

Fiber Panel Portfolios for E-Rate G2 Modules

G2 ULL modules support higher speeds over longer distances allowing you to meet the loss budgets of today's ultra low-loss links and can be used for the CommScope Application Assurance Guarantee. G2 ULL modules are factory tested to .35 dB IL multimode and 0.60 dB singlemode.



DM12-24LC-WB-ULL

G2 MODULES - ULTRA LOW LOSS SOLUTIONS METHOD B ENHANCED

	MPO 8 - 24 Fiber		MPO 12 - 12 Fiber		MPO 12 - 24 Fiber		MPO 24 - 24 Fiber		E-Rate Eligibility	E-Rate Category
	Material ID	Description	Material ID	Description	Material ID	Description	Material ID	Description		
LC Multimode (OM3-OM4)	760236108	DM08-24LC-LS-ULL	760238838	DM12-12LC-LS-ULL	760236110	DM12-24LC-LS-ULL	760236112	DM24-24LC-LS-ULL	100%	Cat 2 (IC, MIBS)
LC Multimode (OM5)	760236109	DM08-24LC-WB-ULL	760238839	DM12-12LC-WB-ULL	760236111	DM12-24LC-WB-ULL	760236113	DM24-24LC-WB-ULL		
LC Singlemode UPC	760238082	DM08-24LC-SM-ULL	760238837	DM12-12LC-SM-ULL	760238083	DM12-24LC-SM-ULL	X	X		



360DMis-12LC-LS



360DMis-12LC-SM



360DMis-12LCA-SM



360DMis-24LC-LS

G2 MODULES - LOW LOSS SOLUTIONS METHOD B

	MPO12 - 12 Fiber		MPO12 - 24 Fiber		E-Rate Eligibility	E-Rate Category
	Material ID	Description	Material ID	Description		
LC Multimode (OM3-OM4)	760224071	360DMis-12LC-LS	760206532	360DMis-24LC-LS, AQUA	100%	Cat 2 (IC, MIBS)
LC Multimode (OM5)	760224113	360DMis-12LC-LS-WB	760217950	360DMis-24LC-WB		
LC Singlemode UPC	760224089	360DMis-12LC-SM	760206540	360DMis-24LC-SM BLUE		
LC Singlemode APC	760224238	360DMis-12LCA-SM	760206565	360DMis-24LCA-SM		
SC Multimode (OM3-OM4)	760109967	360DM-12SC-LS	X	X		
SC Singlemode UPC	760109975	360DM-12SC-SM	X	X		
SC Singlemode APC	760109991	360DM-12SCA-SM	X	X		

Fiber Panel Portfolios for E-Rate G2 Modules



360CM12-2x3-LS

G2 conversion modules are available in low-loss, 0.50 dB MM/1.34 dB SM IL and ultra low-loss 0.40 dB MM/0.70 dB SM IL performance.

G2 CONVERSION MODULES

	Low Loss Method B		Ultra Low Loss Method B Enhanced		E-Rate Eligibility	E-Rate Category
	Material ID	Description	Material ID	Description		
MPO12 (2) / MPO8 (3)	760200345	360CM12-2x3-LS	760237217	CM12-2X3-LS-ULL	100%	Cat 2 (IC, MIBS)
MPO12 (4) / MPO8 (6)	760200352	360CM12-4x6-LS	760237220	CM12-4X6-LS-ULL		
MPO12 (2) / MPO8 (3) Singlemode	760220400	360CM12-2x3-TS	760237216	CM12-2X3-SM-ULL		
MPO12 (4) / MPO8 (6) Singlemode	760220418	360CM12-4x6-TS	760237219	CM12-4X6-SM-ULL		
MPO12 (2) / MPO8 (3) OM5	X	X	760237218	CM12-2X3-WB-ULL		
MPO12 (4) / MPO8 (6) OM5	X	X	760237221	CM12-4X6-WB-ULL		



G2-SP-24LCG-PT



G2-SP-24LCV-PT

G2 SPLICE CASSETTES

	Stranded		Ribbon		E-Rate Eligibility	E-Rate Category
	Material ID	Description	Material ID	Description		
LC Multimode (OM4)	760244927	G2-SP-24LCX-PT	760244928	G2-SP-24LCX-RPT	100%	Cat 2 (IC, MIBS)
	760245399	G2-SP-12LCX-PT	760245400	G2-SP-12LCX-RPT		
LC Multimode (OM5)	760245398	G2-SP-24LCV-PT	N/A	N/A		
	760245403	G2-SP-12LCV-PT	N/A	N/A		
LC UPC Singlemode	760244929	G2-SP-24LCG-PT	760244930	G2-SP-24LCG-RPT		
	760245401	G2-SP-12LCG-PT	760245402	G2-SP-12LCG-RPT		
LC APC Singlemode	760245961	G2-SP-24LAG-PT	N/A	N/A		
	760245960	G2-SP-12LAG-PT	N/A	N/A		
Empty Cassette No Fiber	760245494	G2-SP-24LC	N/A	N/A		
	760245495	G2-SP-12LC	N/A	N/A		
	760245497	G2-SP-0000	N/A	N/A		

Fiber Panel Portfolios for E-Rate G2 Pigtail Cassettes



360G2 Cartridge 12-LC-LS-AQ



360G2 Cartridge 12-LCA-SM-GR



360G2 Cartridge 12-LC-SM-BL

G2 PIGTAIL CASSETTES

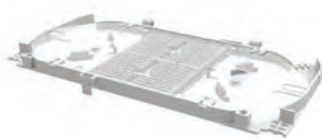
	No Pigtails		Pigtails Included		E-Rate Eligibility	E-Rate Category
	Material ID	Description	Material ID	Description		
LC Multimode (OM3-OM4)	760109256	360G2 Cartridge 12-LC-LS-AQ	760109470	360G2 Cartridge 12-LC-LS-AQ-Pigtails	100%	Cat 2 (IC, MIBS)
LC Singlemode UPC	760109272	360G2 Cartridge 12-LC-SM-BL	760109496	360G2 Cartridge 12-LC-SM-BL-Pigtails		
LC Singlemode APC	760109280	360G2 Cartridge 12-LCA-SM-GR	760109504	360G2 Cartridge 12-LCA-SM-GR-Pigtails		
SC Multimode (OM3-OM4)	760109298	360G2 Cartridge 6-SC-LS-AQ	760109512	360G2 Cartridge 6-SC-LS-AQ-Pigtails A		
	X	X	760109520	360G2 Cartridge 6-SC-LS-AQ-Pigtails B		
SC Singlemode UPC	760109314	360G2 Cartridge 6-SC-SM-BL	760109553	360G2 Cartridge 6-SC-SM-BL-Pigtails A		
	X	X	760109561	360G2 Cartridge 6-SC-SM-BL-Pigtails B		
SC Singlemode APC	760109322	360G2 Cartridge 6-SCA-SM-GR	760109579	360G2 Cartridge 6-SCA-SM-GR-Pigtails A		
	X	X	760109587	360G2 Cartridge 6-SCA-SM-GR-Pigtails B		

Fiber Panel Portfolios for E-Rate G2 Wall Boxes & G2 Accessories

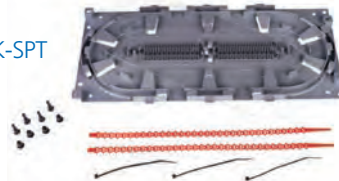


Wall Mount Building Enclosures provide fiber distribution management when space is at a premium. The WB2-MOD's are compatible with all G2 modules and, G2 splice cassettes and adapter packs.

G2 WALLBOXES				
Density	Material ID	Description	E-Rate Eligibility	E-Rate Category
24 LC	760248900	WB2-EMT-BK-1P-MOD	100%	Cat 2 (IC, MIBS)
48 LC	760248901	WB2-EMT-BK-2P-MOD		
96 LC	760248902	WB2-EMT-BK-4P-MOD		
192 LC	760248903	WB2-EMT-BK-8P-MOD		



360 LP-STACK-SPT



G2 ACCESSORIES				
Material ID	Product Code	Description	E-Rate Eligibility	E-Rate Category
AGILE Panel Accessories				
760241378	AGL-SPLICE-48	AGILE Splice Tray Kit	100%	Cat 2 (IC, MIBS)
760193938	AGL-1U-TROUGH	AGILE panel 1U Jumper Management Trough		
Panel Accessories				
760039867	RS-2AF-16SF	RoloSplice Kit with 2 fusion splice trays for 1U and 2U rack mount, 2 and 4 port wall mount	100%	Cat 2 (IC, MIBS)
760031856	RS-4AF-16SF	RoloSplice Kit with 4 fusion splice trays for 1U and 2U rack mount, 2 and 4 port wall mount		
760031054	SW-6AF-16SF	Fusion Splice Wallet Kit with 6 splice trays for 4U rack mount and 8 port wall mount.		
760148502	360-LP-STACK-SPT	Fusion Splice Tray Kit, stackable, large format for 1U and 2U rack mount		
Miscellaneous				
760207944	HD-1U-REAR-EXT	1U Rear cable extension	100%	Cat 2 (IC, MIBS)
760239082	SD-HD-UD-UDS2U-DOOR-LOCK-KT	Door lock kit for SD, HD, UD and UDS2U panels, including one (1) lock and one (1) key		
760209619	CABLE-MOUNT-KIT-12	Cable attachment molding x 12		
760058677	RMB-6-1/2	InstaPATCH Plus attachment bracket, rack mounted, six 1/2" fittings		
760058685	RMB-6-3/8	InstaPATCH Plus attachment bracket, rack mounted, six 3/8" fittings		
760109462	360G2-MOD-BLANK-4PK	Mod Panel Blank Adapter Pack, 4 Panels		
760039875	G2-SRF	Small Diameter Cable Entrance Kit		
760039883	G2-23BRKT	Mounting Bracket		
760185595	KIT, FIBER DRUM	Fiber Drum Kit (2 per kit)		
760238380	BK-FP-SML	Ribbon splice cassette blocking kit for HD-1U, HD-2U and UD-2U		
760238381	BK-FP-LRG	Ribbon splice cassette blocking kit for HD-4U and UD-4U		

Fiber Panel Portfolios for E-Rate EHD Fiber Solutions

EHD fiber solutions are designed for today's more crowded and demanding environments. Available in 1U, 2U or 4U configurations, they support 72 duplex LC ports or 72 MPO ports per RU. EHD modules, adapter packs and cassettes are 24 fiber solutions.



EHD-1U



EHD-2U



EHD-4U

EHD PANELS

Density	Material ID	Description	E-Rate Eligibility	E-Rate Category
144 LC	EHD-1U	EHD-1U	100%	Cat 2 (IC, MIBS)
288 LC	EHD-2U	EHD-2U		
576 LC	EHD-4U	EHD-4U		



EHD-DP-12LC-WB

EHD LC ADAPTER PACKS

24 Fiber			E-Rate Eligibility	E-Rate Category
	Material ID	Description		
LC Multimode (OM3-OM4)	760238903	EHD-DP-12LC-LS	100%	Cat 2 (IC, MIBS)
LC Multimode (OM5)	760238902	EHD-DP-12LC-WB		
LC Singlemode UPC	760238904	EHD-DP-12LC-SM		



EHD-DP-12MPO-ALL-A

EHD MPO ADAPTER PACKS

	Material ID	Description	E-Rate Eligibility	E-Rate Category
MPO 12 Method A	760235621	EHD-DP-12MPO-ALL-A	100%	Cat 2 (IC, MIBS)
MPO 12 Method B	760235622	EHD-DP-12MPO-ALL-B		

Fiber Panel Portfolios for E-Rate EHD Fiber Solutions

EHD ULL modules support higher speeds over longer distances allowing you to meet the loss budgets of today's ultra low-loss links and can be used for the CommScope Application Assurance Guarantee. EHD ULL modules are factory tested to 0.35 dB IL multimode and 0.60 dB singlemode.



EHD08-DM-24LC-LS-B-ULL



EHD08-DM-24LC-WB-B-ULL

EHD LC-MPO MODULES - 24 FIBER

	MPO 8 Method B Enhanced		MPO 12 Method B Enhanced		MPO 24 Method B Enhanced		E-Rate Eligibility	E-Rate Category
	Material ID	Description	Material ID	Description	Material ID	Description		
LC Multimode (OM3-OM4)	760237958	EHD08-DM-24LC-LS-B-ULL	760237993	EHD12-DM-24LC-LS-B-ULL	760237999	EHD24-DM-24LC-LS-B-ULL	100%	Cat 2 (IC, MIBS)
LC Multimode (OM5)	760237959	EHD08-DM-24LC-WB-B-ULL	760237994	EHD12-DM-24LC-WB-B-ULL	760238000	EHD24-DM-24LC-WB-B-ULL		
LC Singlemode UPC	760237957	EHD08-DM-24LC-SM-B-ULL	760237992	EHD12-DM-24LC-SM-B-ULL	X	X		
LC Singlemode APC	X	X	760239368	EHD12-DM-24LA-SM-B-LL	X	X		

The EHD solution uses modular splice cassettes for integrated splicing and patching applications.



EHD-SP-24LC-LS-AS-ULL



EHD-SP-24LC-SM-AS-ULL

EHD SPLICE CASSETTES - 24 FIBER

	Stranded		Ribbon		E-Rate Eligibility	E-Rate Category
	Material ID	Description	Material ID	Description		
LC Multimode (OM3-OM4)	760237943	EHD-SP-24LC-LS-AS-ULL	760237941	EHD-SP-24LC-LSR-AS-ULL	100%	Cat 2 (IC, MIBS)
LC Singlemode	760237944	EHD-SP-24LC-SM-AS-ULL	760237942	EHD-SP-24LC-SMR-AS-ULL		

Fiber Panel Portfolios for E-Rate CHD Fiber Solutions

CHD fiber solutions have the same densities as EHD, supporting 72 duplex LC ports or 72 MPO ports per RU. CHD offers more flexibility with 12 fiber modules, adapter packs and cassettes.



CHD-1U



CHD-2U



CHD-4U

CHD PANELS

Density	Material ID	Description	E-Rate Eligibility	E-Rate Category
144 LC	CHD-1U	CHD-1U	100%	Cat 2 (IC, MIBS)
288 LC	CHD-2U	CHD-2U		
576 LC	CHD-4U	CHD-4U		



CHD-DP-6MPO-ALL-A



CHD-DP-12LC-WB

CHD LC ADAPTER PACKS

12 Fiber			E-Rate Eligibility	E-Rate Category
	Material ID	Description		
LC Multimode OM4	760245730	CHD-DP-12LC-LS	100%	Cat 2 (IC, MIBS)
LC Multimode OM5	760245729	CHD-DP-12LC-WB		
LC Singlemode UPC	760243203	CHD-DP-12LC-SM		

CHD MPO ADAPTER PACKS

	Material ID	Description	E-Rate Eligibility	E-Rate Category
MPO 4 Method A	760243199	CHD-DP-4MPO-ALL-A	100%	Cat 2 (IC, MIBS)
MPO 4 Method B	760243200	CHD-DP-4MPO-ALL-B		
MPO 6 Method A	760243197	CHD-DP-6MPO-ALL-A		
MPO 6 Method B	760243198	CHD-DP-6MPO-ALL-B		

Fiber Panel Portfolios for E-Rate CHD Fiber Solutions

CHD ULL modules support higher speeds over longer distances allowing you to meet the loss budgets of today's ultra low-loss links and can be used for the CommScope Application Assurance Guarantee. CHD ULL modules are factory tested to 0.35 dB IL multimode and 0.60 dB singlemode.

CHD LC-MPO MODULES - 12 FIBER				
12 Fiber			E-Rate Eligibility	E-Rate Category
	Material ID	Description		
LC Multimode (OM3-OM4)	760245723	CHD12-DM-12LC-LS-B-ULL	100%	Cat 2 (IC, MIBS)
LC Multimode (OM5)	760245728	CHD12-DM-12LC-WB-B-ULL		
LC Singlemode UPC	760245724	CHD12-DM-12LC-SM-B-ULL		



CHD-SP-12LC-SMR-B-ULL

CHD SPLICE CASSETTES - 12 FIBER						
	Stranded		Ribbon		E-Rate Eligibility	E-Rate Category
	Material ID	Description	Material ID	Description		
LC Multimode (OM3-OM4)	760244973	CHD-SP-12LC-LS-B-ULL	760245733	CHD-SP-12LC-LSR-B-ULL	100%	Cat 2 (IC, MIBS)
LC Singlemode UPC	760244824	CHD-SP-12LC-SM-B-ULL	760244826	CHD-SP-12LC-SMR-B-ULL		
LC Singlemode APC	760245736	CHD-SP-12LA-SM-AS-LL	760245737	CHD-SP-12LA-SMR-AS-LL		
Field Term Cassette - No Fiber	760244827	CHD-FT-00-LC-00	N/A	N/A		

Fiber Panel Portfolios for E-Rate
 CHD Fiber Solutions



EHD-CMB



EHD-CMB-GAB



BK-FP-SML



BK-FP-LRG

EHD AND CHD ACCESSORIES

Material ID	Product Code	Description	E-Rate Eligibility	E-Rate Category
EHD-CMB	EHD-CMB	EHD and CHD external cable management cabinet mounting bracket	100%	Cat 2 (IC, MIBS)
EHD-CMB-GAB	EHD-CMB-GAB	EHD and CHD external cable management cabinet mounting bracket for trunk gland adapters		
760238380	BK-FP-SML	Ribbon splice cassette blocking kit for EHD-1U, EHD-2U and CHD-1U		
760238381	BK-FP-LRG	Ribbon splice cassette blocking kit for EHD-4U		
760245038	CHD-BK-2U	Ribbon splice cassette blocking kit for CHD-2U and CHD-4U (x2 needed for 4U)		

Fiber Panel Portfolios for E-Rate Specialty Solutions



The pre-stubbed EHD panel has LC connectors at the panel and stub on the far end. It allows customers to meet demands for increasing bandwidth and more connections in a timely, cost-effective manner while reducing optical loss. Installers simply reel out cable from the stub end and splice to large fiber count Outside Plant or Backbone cables.

EHD PRE-TERMINATED PANELS					
Density	Concept	Material ID	Description	E-Rate Eligibility	E-Rate Category
144 LC	Premium Sliding	HCC0-1ADDL0AxxxM	1RU Pre-stubbed Patch Panel with LC Adapter and 144f I/O, Riser/LSZH cable, right cable entry, singlemode	100%	Cat 2 (IC, MIBS)
144 LC	Premium Sliding	HCD0-1ADDL0AxxxM	1RU Pre-stubbed Patch Panel with LC Adapter and 144f I/O, Riser/LSZH cable, left cable entry, singlemode		
288 LC	Premium Sliding	HCC0-2BDDL0AxxxM	2RU Pre-stubbed Patch Panel with LC Adapter and 288f I/O, Riser/LSZH cable, right cable entry, singlemode		
288 LC	Premium Sliding	HCD0-2BDDL0AxxxM	2RU Pre-stubbed Patch Panel with LC Adapter and 288f I/O, Riser/LSZH cable, left cable entry, singlemode		

xxx - Denotes cable length in meters (lengths from 25m, and in 25m increments thereafter to 400m)
 Other configurations are available. Contact your CommScope representative for more details.



UDS-2U-BK-LA-A

The ultra-density splice family of splicing panels features a modular, ultra-dense design that scales effortlessly while holding maintenance costs and space requirements to a minimum. Perfect for areas like meeting rooms and interconnects.

UDS -ULTRA DENSITY SPLICING							
Low Loss			Ultra Low Loss			E-Rate Eligibility	E-Rate Category
Density	Material ID	Description	Density	Material ID	Description		
288 LC APC Method A	760239066	UDS-2U-BK-LA-A	288 LC UPC Method A	760239074	UDS-2U-BK-LC-A-ULL	100%	Cat 2 (IC, MIBS)
288 LC APC Method B Enhanced	760239068	UDS-2U-BK-LA-B	288 LC UPC Method B Enhanced	760239076	UDS-2U-BK-LC-B-ULL		
864 LC APC Method A	760239070	UDS-6U-BK-LA-A	864 LC UPC Method A	760239078	UDS-6U-BK-LC-A-ULL		
864 LC APC Method B Enhanced	760239072	UDS-6U-BK-LA-B	864 LC UPC Method B Enhanced	760239080	UDS-6U-BK-LC-B-ULL		

Fiber Panel Portfolios for E-Rate Specialty Solutions

CommScope's Rapid Fiber panel offers unmatched savings in installation time, labor costs and performance. Rapid Fiber panels utilize CommScope's unique RapidReel fiber cable spools, which means the cable is always the right length. The Rapid Fiber panel's combination of cable, RapidReel spooling and connector technology in a single panel not only relieves cable congestion but also simplifies the ordering and inventory of equipment.



RCPB-4KBPUE06100-B

RAPID FIBER PANELS

Material ID	Descriptions	E-Rate Eligibility	E-Rate Category
RCPB-1K2PUE03100-B	1RU 24f Rapid Panel with LC/UPC to MPO, Plenum, singlemode, 31m, Method B Enhanced	100%	Cat 2 (IC, MIBS)
RCPB-1K2PUE06100-B	1RU 24f Rapid Panel with LC/UPC to MPO, Plenum, singlemode, 61m, Method B Enhanced		
RCPB-1K2PUE12200-B	1RU 24f Rapid Panel with LC/UPC to MPO, Plenum, singlemode, 122m, Method B Enhanced		
RCPB-4KBPUE03100-B	4RU 288f Rapid Panel with LC/UPC to MPO, Plenum, singlemode, 31m, Method B Enhanced		
RCPB-4KBPUE06100-B	4RU 288f Rapid Panel with LC/UPC to MPO, Plenum, singlemode, 61m, Method B Enhanced		
RCPB-4KBPUE12200-B	4RU 288f Rapid Panel with LC/UPC to MPO, Plenum, singlemode, 122m, Method B Enhanced		

Fiber Connectivity for E-Rate QWIK-FUSE Connector Kits, Tool Kits & Accessories

Field installable connectors by CommScope offer flexible network solutions are ideal for campus environments where exact measurements are not possible, or when there's a need for a fast repair to restore network connections. The factory pre-polished ferrule eliminates the need for polishing, adhesives, and crimping in the field—minimizing the potential for operator error and expensive connector scrap. Easy to use and quick to install, CommScope field installable connectors and tool kits are designed to simplify the termination process and enable you to terminate and move to your next project with minimal investment in time and cost.

- Fast to install
- No requirement for pre-engineered lengths
- Eliminates unwanted slack storage
- Consistent and reliable terminations
- No epoxy, no polish, no crimp
- Reduces scrap and waste
- Compatible with industry-leading splicers

CommScope offers an extended line of field installable connectors and tool kits, including mechanical splice Qwik II and fusion splice-on Qwik-Fuse connectors. At CommScope, we know campus network solutions are not a one size fits all. You can trust in our products and team of experts to help add the flexibility you need to create a quality solution.



QWIK-FUSE CONNECTOR KITS, TOOL KITS AND ACCESSORIES								E-Rate Eligibility	E-Rate Category
Material ID	Description	Connector	Fiber	Cable	Housing color	Package			
760242874	MFC-LCF-09-5Y-12-PACK	LC	OM3/4/5	0.25/0.9 mm	Aqua	12/pack	100%	Cat 2 (IC, MIBS)	
760243371	MFC-LCF-20-5Y-12-PACK	LC	OM3/4/5	1.6/2.0 mm	Aqua	12/pack			
760243372	SFC-LCF-09-8Y-12-PACK	LC-UPC	OS2	0.25/0.9 mm	Blue	12/pack			
760243388	SFC-LCF-20-8Y-12-PACK	LC-UPC	OS2	1.6/2.0 mm	Blue	12/pack			
760243389	SFC-LCAF-09-8Y-12-PACK	LC-APC	OS2	0.25/0.9 mm	Green	12/pack			
760243390	SFC-LCAF-20-8Y-12-PACK	LC-APC	OS2	1.6/2.0 mm	Green	12/pack			
760243391	MFC-SCF-09-5Y-12-PACK	SC	OM3/4/5	0.25/0.9 mm	Aqua	12/pack			
760243392	MFC-SCF-20-5Y-12-PACK	SC	OM3/4/5	1.6/2.0 mm	Aqua	12/pack			
760243393	MFC-SCF-30-5Y-12-PACK	SC	OM3/4/5	3.0 mm	Aqua	12/pack			
760243394	SFC-SCF-09-8Y-12-PACK	SC-UPC	OS2	0.25/0.9 mm	Blue	12/pack			
760243395	SFC-SCF-20-8Y-12-PACK	SC-UPC	OS2	1.6/2.0 mm	Blue	12/pack			
760243396	SFC-SCF-30-8Y-12-PACK	SC-UPC	OS2	3.0 mm	Blue	12/pack			
760243397	SFC-SCAF-09-8Y-12-PACK	SC-APC	OS2	0.25/0.9 mm	Green	12/pack			
760243398	SFC-SCAF-20-8Y-12-PACK	SC-APC	OS2	1.6/2.0 mm	Green	12/pack			
760243399	SFC-SCAF-30-8Y-12-PACK	SC-APC	OS2	3.0 mm	Green	12/pack			
760243402	Qwik-Fuse Termination Tool Kit, LC, SC (for splice-on connector termination)								
760243403	Qwik-Fuse Installer Tool Kit, LC, SC, with Qwik-Fuse Installer and termination tools								
760244684	Qwik-Fuse cord tool, 1.6, 2.0, 3.0 mm								
760243576	Qwik-Fuse Installer								
760243617	Qwik-Fuse fiber holder, tight buffer and cordage (for use with Qwik-Fuse Installer and many AFL and Sumitomo splicers)								
760244521	Qwik-Fuse fiber holder, loose buffer and 250µm fiber (for use with Qwik-Fuse Installer and many AFL and Sumitomo splicers)								
760244706	Qwik-Fuse fiber holder, Fitel, set								
760245135	Qwik-Fuse connector duplex clip, LC, 10 per pack								
760245136	Qwik-Fuse connector duplex clip, SC, 10 per pack								

Fiber Connectivity for E-Rate QWIK II Connector Kits



QWIK II CONNECTOR KITS

Material ID	Description	Connector	Fiber	Cable	Housing color	Package	E-Rate Eligibility	E-Rate Category
760117887	MFC-LCF-09-5X	LC	OM3/4/5	0.25/0.9 mm	Aqua	Singles	100%	Cat 2 (IC, MIBS)
760117911	MFC-LCF-09-5X-25-PACK	LC	OM3/4/5	0.25/0.9 mm	Aqua	25/pack		
760242343	MFC-LCF-UNV-5X*	LC	OM3/4/5	0.25/0.9/2.0/3.0 mm	Aqua	Single		
760117903	MFC-LCF-09-6X	LC	OM1	0.25/0.9 mm	Beige	Single		
760117937	MFC-LCF-09-6X-25-PACK	LC	OM1	0.25/0.9 mm	Beige	25/pack		
760117895	SFC-LCF-09-8X	LC-UPC	OS2	0.25/0.9 mm	Blue	Single		
760117929	SFC-LCF-09-8X-25-PACK	LC-UPC	OS2	0.25/0.9 mm	Blue	25/pack		
760242344	SFC-LCF-UNV-8X*	LC-UPC	OS2	0.25/0.9/2.0/3.0 mm	Blue	Single		
760184697	SFC-LCF-09-8A-25-PACK	LC-APC	OS2	0.25/0.9 mm	Green	25/pack		
760242345	SFC-LCAF-UNV-8X*	LC-APC	OS2	0.25/0.9/2.0/3.0 mm	Green	Single		
760117945	MFC-SCF-09-5X	SC	OM3/4/5	0.25/0.9 mm	Aqua	Single		
760117978	MFC-SCF-09-5X-25-PACK	SC	OM3/4/5	0.25/0.9 mm	Aqua	25/pack		
760242346	MFC-SCF-UNV-5X*	SC	OM3/4/5	0.25/0.9/2.0/3.0 mm	Aqua	Single		
760117960	MFC-SCF-09-6X	SC	OM1	0.25/0.9 mm	Beige	Single		
760117994	MFC-SCF-09-6X-25-PACK	SC	OM1	0.25/0.9 mm	Beige	25/pack		
760117952	SFC-SCF-09-8X	SC-UPC	OS2	0.25/0.9 mm	Blue	Single		
760117986	SFC-SCF-09-8X-25-PACK	SC-UPC	OS2	0.25/0.9 mm	Blue	25/pack		
760242347	SFC-SCF-UNV-8X*	SC-UPC	OS2	0.25/0.9/2.0/3.0 mm	Blue	Single		
760184689	SFC-SCF-09-8A-25-PACK	SC-APC	OS2	0.25/0.9 mm	Green	25/pack		
760242348	SFC-SCAF-UNV-8X*	SC-APC	OS2	0.25/0.9/2.0/3.0 mm	Green	Single		
760118034	MFC-STF-09-5X-25 PACK	ST	OM3/4/5	0.25/0.9 mm	Aqua	25/pack		
760118059	MFC-STF-09-6X-25 PACK	ST	OM1	0.25/0.9 mm	Beige	25/pack		
760118042	SFC-STF-09-8X-25 PACK	ST-UPC	OS2	0.25/0.9 mm	Blue	25/pack		

* Field terminated fiber patch cords are not included in CommScope Extended System Warranty

Fiber Connectivity for E-Rate QWIK II Connector Kits

QWIK II CONNECTOR TOOL KIT COMPONENTS

Component	Qwik II termination kit (760242377)	Qwik II termination kit, premium (760248225)
Premium Case	√	√
0.9 mm cable clamp	√	√
2.0 mm cable clamp		√
3.0 mm cable clamp		√
Visual fault identifier (VFI)		√
High-precision fiber cleaver		√
Precision fiber cleaver	√	
Fiber stripper, 3-hole	√	√
Cutter, Kevlar	√	√
Marker, Sharpie	√	√
Fiber prep fluid	√	√
Fiber wipes	√	√
Termination instruction	√	√



QWIK II CONNECTOR TOOL KITS AND ACCESSORIES

Material ID	Description	E-Rate Eligibility	E-Rate Category
760242377	Qwik II connector termination tool kit	100%	Cat 2 (IC, MBS)
760248225	Qwik II connector termination tool kit, premiums		
760243353	Replacement blade for high-precision cleaver		
760249056	Optical Fiber Visual Fault Locator		
760249518	High-precision Fiber Cleaver		
760243349	Fiber clamp, buffer tube, 900 µm		
760243350	Fiber clamp, 2.0 mm		
760243351	Fiber clamp, 3.0 mm		
760243081	Qwik II LC duplex clip, 6 per pack		

Fiber Connectivity for E-Rate
 Fiber Optic Connectors

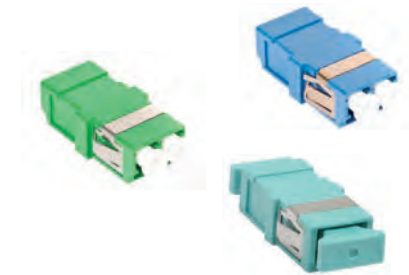


ANAEROBIC FIBER OPTIC CONNECTORS

Material ID	Product Number	Description	E-Rate Eligibility	E-Rate Category
760034181	MFC-LCR-09-BG	Behind The Wall Pre-Radiused LC Connector for 0.9 mm Fiber, multimode	100%	Cat 2 (IC, MIBS)
760034140	MFC-LCR-16-BG	Pre-Radiused LC Connector simplex for 1.6 mm Fiber, multimode		
760034157	MDC-LCR-16-BG	Pre-Radiused LC Duplex Connector for 1.6 mm fiber, multimode		
760034199	SFC-LCR-09-BL	Behind The Wall Pre-Radiused LC Connector for 0.9 mm Fiber, single-mode		
760034173	SFC-LCR-16-BL	Pre-Radiused LC Connector simplex for 1.6 mm Fiber, single-mode		
760091439	SDC-LCR-16-BL	Pre-Radiused LC Connector duplex for 1.6 mm Fiber, single-mode		
760007070	MFC-SCR-09-BG	Behind The Wall Pre-Radiused SC Connector for 0.9 mm Fiber, multimode		
760112227	MFC-SCR-16-BG	Pre-Radiused SC Connector for 1.6 mm Fiber Cordage, Simplex, multimode		
760112268	MDC-SCR-16-BG	Pre-Radiused SC Connector for 1.6 mm Fiber Cordage, Duplex, multimode		
760007112	SFC-SCR-09-BL	Behind The Wall Pre-Radiused SC Connector for 0.9 mm Fiber, single-mode		
760112243	SFC-SCR-16-BL	Pre-Radiused SC Connector for 1.6 mm Fiber Cordage, Simplex, single-mode		
760112300	SDC-SCR-16-BL	Pre-Radiused SC Connector for 1.6 mm Fiber Cordage, Duplex, single-mode		

Fiber Connectivity for E-Rate Fiber Optic Adapters

COMMSCOPE®
SYSTIMAX®



ADAPTERS

Material ID	Product Number	Description	E-Rate Eligibility	E-Rate Category
760056002	MFA-LC02-AQ/LP-SHUTTERED	LC Duplex Low Profile Shuttered Adapter, Aqua, Single Pack	100%	Cat 2 (IC, MIBS)
760115212	MFA-LC02-AQ/LP	LC Duplex Low Profile Adapter, Aqua, Single Pack		
760115220	MFA-LC02-BG/LP	LC Duplex Low Profile Adapter, Beige, Single Pack		
760056010	MFA-LC02-BG/LP-SHUTTERED	LC Duplex Low Profile Shuttered Adapter, Beige, Single Pack		
760056036	AFA-LC02-GR/LP-SHUTTERED	LC-APC Duplex Low Profile Suttered Adapter, Green, Single Pack		
760115246	AFA-LC02-GR/LP	LC-APC Duplex Low Profile Adapter, Green, Single Pack		
760056028	SFA-LC02-BL/LP-SHUTTERED	LC Duplex Low Profile Shuttered Adapter, Blue, Single Pack		
760115238	SFA-LC02-BL/LP	LC Duplex Low Profile Adapter, Blue, Single Pack		
760115626	MFA-SC02-BG-FLANGELESS	SC Duplex Flangeless Adapter, Beige, Single Pack		
108223181	MFA-SC01-BG	SC Simplex Adapter, Beige, Single Pack		
108622895	MFA-SC02-AQ	SC Duplex Adapter, Aqua, Single Pack		
700004880	MFA-SC02-BG	SC Duplex Adapter, Beige, Single Pack		
760115543	MFA-SC01-AQ	SC Simplex Adapter, Aqua, Single Pack		
760115568	MFA-SC01-BG-FLANGELESS	SC Simplex Flangeless Adapter, Beige, Single Pack		
760115592	MFA-SC01-AQ-FLANGELESS	SC Simplex Flangeless Adapter, Aqua, Single Pack		
760115600	MFA-SC02-AQ-FLANGELESS	SC Duplex Flangeless Adapter, Aqua, Single Pack		
760036277	AFA-SC01-GR	SC-APC Simplex Adapter, Green, Single Pack		
760036285	AFA-SC02-GR	SC-APC Duplex Adapter, Green, Single Pack		
760115667	AFA-SC01-GR-FLANGELESS	SC-APC Simplex Flangeless Adapter, Green, Single Pack		
760115675	AFA-SC02-GR-FLANGELESS	SC-APC Duplex Flangeless Adapter, Green, Single Pack		
700004799	SFA-SC01-BL-FLANGELESS	SC Simplex Flangeless Adapter, Blue, Single Pack		
700004807	SFA-SC01-BL	SC Simplex Adapter, Blue, Single Pack		
700004815	SFA-SC02-BL	SC Duplex Adapter, Blue, Single Pack		
760115642	SFA-SC02-BL-FLANGELESS	SC Duplex Flangeless Adapter, Blue, Single Pack		

Fiber Connectivity for E-Rate

FACEPLATE ADAPTERS				
Material ID	Product Number	Description	E-Rate Eligibility	E-Rate Category
760237006	UNFA-EMM-SC01/LC02-AQ-PACK-25	SC Simplex/LC Duplex Low Profile Adapter Mounting Module/Collar Assembly, aqua – 25 pack	100%	Cat 2 (IC, MIBS)
760155952	UNFA-EMM-SC01/LC02-BL-PACK-25	SC Simplex/LC Duplex Low Profile Adapter Mounting Module/Collar Assembly, blue – 25 pack		
760010090	M81LC-029-Collar	Clear Plastic Collar for M81Series LC Adapter – 25 pack		

SPLICE WALLET KITS				
Material ID	Product Number	Description	E-Rate Eligibility	E-Rate Category
760148411	KIT-SW-48-SFS-2FD	Splice Wallet Kit, 48 Single Fusion Splices (1x3x16), 1U/2U Shelf, 2 Fiber Drums	100%	Cat 2 (IC, MIBS)
760148429	KIT-SW-36-MES-2FD	Splice Wallet Kit, 36 Mechanical Splices (1x3x12), 1U/2U Shelf, 2 Fiber Drums		
760154682	KIT-SW-96-SFS-2FD-1U	Splice Wallet Kit, 96 Single Fusion Splices (2x3x16), 1U/2U Shelf, 2 Fiber Drums		
760148437	KIT-SW-96-SFS-2FD	Splice Wallet Kit, 96 Single Fusion Splices (1x6x16), 2U Shelf, 2 Fiber Drums		
760148445	KIT-SW-72-MES-2FD	Splice Wallet Kit, 72 Mechanical Splices (1x6x12), 2U Shelf, 2 Fiber Drums		
760148452	KIT-SW-96-SFS-4FD	Splice Wallet Kit, 96 Single Fusion Splices (1x6x16), 4U Shelf, 4 Fiber Drums		
760148460	KIT-SW-72-MES-4FD	Splice Wallet Kit, 72 Mechanical Splices (1x6x12), 4U Shelf, 4 Fiber Drums		
760148478	KIT-SW-192-SFS-4FD	Splice Wallet Kit, 192 Single Fusion Splices (2x6x16), 4U Shelf, 4 Fiber Drums		
760148486	KIT-SW-144-MES-4FD	Splice Wallet Kit, 144 Mechanical Splices (2x6x12), 4U Shelf, 4 Fiber Drums		
760148502	360-LP-STACK-SPT	Fusion Splice Tray, stackable 48 Fusion Splices (0.5x6.5x14), 1U, 2U, & 4U		
760031054	SW-6AF-16SF	Splice Wallet Kit, 96 Single Fusion Splices (1x6x16), WBE Shelf		
760057075	SW-03-FUS	Splice Wallet Kit, 48 Single Fusion Splices (1x3x16), WBE Shelf		

Fiber Connectivity for E-Rate

FIBER CLEANING/INSPECTION KITS

Material ID	Description	E-Rate Eligibility	E-Rate Category
760053207	Cleaning Consumables Kit, Fiber Optic	100%	Cat 2 (IC, MIBS)
760053199	Cleaning and Inspection Kit, Fiber Optic		



FIBER BREAK-OUT KITS

Material ID	Description	E-Rate Eligibility	E-Rate Category
760018820	6 Fiber Breakout kit, loose tube, 24 inch, indoor	100%	Cat 2 (IC, MIBS)
760018838	12 Fiber Breakout kit, loose tube, 24 inch, indoor		
108459488	2 x 12 Fiber Breakout Kit, outside plant, gel blocking		



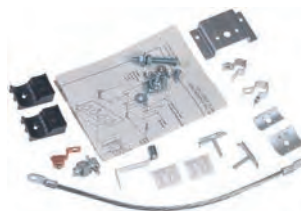
CONSUMABLES

Material ID	Description	E-Rate Eligibility	E-Rate Category
501857-2	Alcohol wipes	100%	Cat 2 (IC, MIBS)
1457630-1	Curing sleeve; Used with: LC 900 μm, 12 pack		
502656-1	Curing sleeve; Used with: SC Connectors		
1985374-1	Heat shrink		



FIBER CABLE CLAMPS

Material ID	Product Number	Description	E-Rate Eligibility	E-Rate Category
700025653	12A2 Clamp	Grounding Clamp Kit, non-metallic sheath cable	100%	Cat 2 (IC, MIBS)
700025513	12A1 CLAMP	Grounding Clamp Kit, metallic sheath cable		



Modular Panels for E-Rate



SYSTIMAX 360™ MODULAR PANELS

MATERIAL ID	PRODUCT NUMBER	DESCRIPTION	E-Rate Eligibility	E-Rate Category
760187187	360-E-MOD-1U-24s	24-Port Evolve Patch Panel	100%	Cat 2 (IC, MIBS)
760187195	360-E-MOD-2U-48	48-Port Evolve Patch Panel		
760187203	360-E-ANG-MOD-1U-24	24-Port Evolve Angled Patch Panel		
760187211	360-E-ANG-MOD-2U-48	48-Port Evolve Angled Patch Panel		
760187179	360 Evolve M-Series Adapter - 4 Pk	Evolve M-Series Adapter - 4 Pack		
760187278	360 E Mod Label Sheet US LTR	Modular Panel Label Sheet US LTR		



M-SERIES MODULAR PANELS

MATERIAL ID	PRODUCT NUMBER	DESCRIPTION	E-Rate Eligibility	E-Rate Category
760105429	M4800-1U-GS	M4800 1U 48-Port Panel - GS	100%	Cat 2 (IC, MIBS)
760104307	M4800-1U-PS	M4800 1U 48-Port Panel - PS		
760109744	M4800A-1U-GS	M4800A 1U Angled 48-Port Panel - GS		
760109736	M4800A-1U-PS	M4800A 1U Angled 48-Port Panel - PS		
760104737	360-RCM-RM	Rear Cable Management System (Rack Mountable)		
760118315	M2400-1U-PS	M2400 1U 24 Port Panel - PS		
760118323	M2400 -1U-GS	M2400 1U 24-port panel - GS		
760118331	M2400A-1U-PS	M2400A 1U Angled 24 Port Panel - PS		
760118349	M2400A 1U-GS	M2400 1U Angled 24 Port Panel - GS		
760207274	CPP-UDDM-M-1U-24	Discrete Distribution Module Panel, M-series, UTP, 1U, 24 port		
760207282	CPP-UDDM-M-2U-48	Discrete Distribution Module Panel, M-series, UTP, 2U, 48 port		
760207290	CPPA-UDDM-M-1U-24	Angled Discrete Distribution Module Panel, M-series, UTP, 1U, 24 port		
760207308	CPPA-UDDM-M-2U-48	Angled Discrete Distribution Module Panel, M-series, UTP, 2U, 48 port		

Copper solutions for E-Rate
 Category 6A UTP products



GIGASPEED® X10D U/UTP 1091B NON-PLENUM CABLES

MATERIAL ID	PRODUCT NUMBER	PAIR COUNT	JACKET COLOR	LENGTH	PACKAGING	E-Rate Eligibility	E-Rate Category
760107144	1091B WH 4/23 W1000	4	White	1000 ft (305 M)	We Tote Box	100%	Cat 2 (IC, MIBS)
760107078	1091B SL 4/23 W1000	4	Slate	1000 ft (305 m)	We Tote Box		
760107094	1091B BL 4/23 W1000	4	Blue	1000 ft (305 m)	We Tote Box		
760107102	1091B LB 4/23 W1000	4	Light Blue	1000 ft (305 m)	We Tote Box		
760107151	1091B YL 4/23 W1000	4	Yellow	1000 ft (305 m)	We Tote Box		

GIGASPEED® X10D U/UTP 1091SD NON-PLENUM CABLES

MATERIAL ID	PRODUCT NUMBER	PAIR COUNT	JACKET COLOR	LENGTH	PACKAGING	E-Rate Eligibility	E-Rate Category
760240218	1091SD BL 4/23 R1000	4	Blue	1000 ft (305 M)	Reel	100%	Cat 2 (IC, MIBS)
760240220	1091SD WH 4/23 R1000	4	White	1000 ft (305 m)	Reel		
760240222	1091SD SL 4/23 R1000	4	Slate	1000 ft (305 m)	Reel		

GIGASPEED® X10D U/UTP 2091B PLENUM CABLES

MATERIAL ID	PRODUCT NUMBER	PAIR COUNT	JACKET COLOR	LENGTH	PACKAGING	E-Rate Eligibility	E-Rate Category
760107268	2091B WH 4/23 W1000	4	White	1000 ft (305 M)	We Tote Box	100%	Cat 2 (IC, MIBS)
760107250	2091B SL 4/23 W1000	4	Slate	1000 ft (305 m)	We Tote Box		
760107201	2091B BL 4/23 W1000	4	Blue	1000 ft (305 m)	We Tote Box		
760107276	2091B YL 4/23 W1000	4	Yellow	1000 ft (305 m)	We Tote Box		

GIGASPEED® X10D U/UTP 2091B PLENUM CABLES

MATERIAL ID	PRODUCT NUMBER	PAIR COUNT	JACKET COLOR	LENGTH	PACKAGING	E-Rate Eligibility	E-Rate Category
760234859	2091SD BL 4/23 R1000	4	Blue	1000 ft (305 M)	Reel	100%	Cat 2 (IC, MIBS)
760234860	2091SD WH 4/23 R1000	4	White	1000 ft (305 m)	Reel		
760234861	2091SD SL 4/23 R1000	4	Slate	1000 ft (305 m)	Reel		

Copper solutions for E-Rate
 Category 6A UTP products



GIGASPEED® X10D 1100GS6 PANELS

MATERIAL ID	PRODUCT NUMBER	DESCRIPTION	iPATCH READY	E-Rate Eligibility	E-Rate Category
760152587	360-IPR-1100-E-GS6-1U-24	24-Port Evolve Patch Panel	Yes	100%	Cat 2 (IC, MIBS)
760152595	360-IPR-1100-E-GS6-2U-48	48-Port Evolve Patch Panel	Yes		
760151324	360-IPR-1100A-E-GS6-1U-24	24-Port Evolve Angled Patch Panel	Yes		
760151779	360-IPR-1100A-E-GS6-2U-48	48-Port Evolve Angled Patch Panel	Yes		
760151183	360-IPR-1100-GS6-DM6	1100GS6 Evolve Distribution Module 6-Port	–		
760155739	360-E-KIT-1U	1U Evolve Panel Kit	Yes		
760155747	360-E-KIT-2U	2U Evolve Panel Kit	Yes		
760152785	360-A-E-KIT-1U	Angled 1U Evolve Panel Kit	Yes		
760152793	360-A-E-KIT-2U	Angled 2U Evolve Panel Kit	Yes		
760183244	360 and UNP Label Sheet US LTR	Label Sheet for 360 and Universal Panels, US letter	–		



GIGASPEED® X10D PATCHMAX GS6 PANELS

MATERIAL ID	PRODUCT NUMBER	DESCRIPTION	iPATCH READY	E-Rate Eligibility	E-Rate Category
760102251	360-PM-GS6-2U-24	24-Port Patch Panel	Yes	100%	Cat 2 (IC, MIBS)
760128207	360-PM-GS6-2U-48	48-Port Patch Panel	Yes		
760102277	360-PM-GS6-DM6	GS6 6-Port Distribution Module	–		
760108993	360-PM-KIT-2U-24	2U Panel Kit, 24-Port	Yes		
760117408	360-PM-KIT-2U-48	2U Panel Kit, 48-Port	Yes		
760183244	360 and UNP Label Sheet US LTR	Label Sheet for 360 and Universal Panels, US letter	–		

Copper solutions for E-Rate
 Category 6A UTP products



GIGASPEED® X10D MGS600 SERIES INFORMATION OUTLET				
MATERIAL ID	PRODUCT NUMBER	COLOR	E-Rate Eligibility	E-Rate Category
760092361	MGS600-003	Black	100%	Cat 2 (IC, MIBS)
760092379	MGS600-112	Orange		
760092387	MGS600-123	Yellow		
760092403	MGS600-226	Green		
760092411	MGS600-246	Ivory		
760092429	MGS600-262	White		
760092437	MGS600-270	Gray		
760092445	MGS600-317	Red		
760092452	MGS600-318	Blue		
760092460	MGS600-361	Violet		
760092478	MGS600-148	Almond		

GIGASPEED® X10D 360GS10E MODULAR PATCH CORDS								
MATERIAL ID	PRODUCT NUMBER	DESCRIPTION	MODULAR JACK COLOR	CORD COLOR OPTIONS	UOM	CABLE/CORDAGE LENGTH OPTIONS	E-Rate Eligibility	E-Rate Category
CPCSSX2	360GS10E	360GS10E Solid Cordage	0	1,2,3,4,6,7,8,9,B,C,Z	F, M	3-100ft / 1-30m	100%	Cat 2 (IC, MIBS)
CPCSSY2	360GS10E-P	360GS10E Solid Plenum Cordage	0	1,4,6,7,8,9,C,Z	F, M	3-100ft / 1-30m		
CPCS4X2	360GS10E117	360GS10E Single-ended Solid Cordage	0	1,2,3,4,6,7,8,9,B,C,Z	F, M	3-100ft / 1-30m		
CO199K2	MiNo6A	MiNo6A reduced Diameter Cat 6A LS-CM Patch Cord	0	1,2,3,4,7,8,9,L,Z	F, M	1-130ft / 1-40m		

For information concerning Zone Extension Cords visit our eCatalog at www.commscope.com



CEILING CONNECTOR ASSEMBLIES				
MATERIAL ID	PRODUCT NUMBER	DESCRIPTION	E-Rate Eligibility	E-Rate Category
760235591	CCA-CAT6A-PLENUM-BLACK-N018	Category 6A U/UTP cord, plenum, RJ45 to ceiling connector, 1.5 ft, black	100%	Cat 2 (IC, MIBS)

Copper solutions for E-Rate
 Category 6A FTP products



GIGASPEED® X10D F/UTP 1291B NON-PLENUM CABLES

MATERIAL ID	PRODUCT NUMBER	PAIR COUNT	JACKET COLOR	LENGTH	PACKAGING	E-Rate Eligibility	E-Rate Category
760081364	1291B BL 4/23 R1000	4	Blue	1000 ft (305 M)	Reel	100%	Cat 2 (IC, MIBS)
760081406	1291B WH 4/23 R1000	4	White	1000 ft (305 m)	Reel		
760081398	1291B SL 4/23 R1000	4	Slate	1000 ft (305 m)	Reel		

GIGASPEED® X10D F/UTP 2291B PLENUM CABLES

MATERIAL ID	PRODUCT NUMBER	PAIR COUNT	JACKET COLOR	LENGTH	PACKAGING	E-Rate Eligibility	E-Rate Category
760122630	2291B BL 4/23 R1000	4	Blue	1000 ft (305 M)	Reel	100%	Cat 2 (IC, MIBS)
760122648	2291B WH 4/23 R1000	4	White	1000 ft (305 m)	Reel		
760122655	2291B SL 4/23 R1000	4	Slate	1000 ft (305 m)	Reel		



GIGASPEED® X10D SHIELDED HIGH DENSITY INFORMATION OUTLET

MATERIAL ID	PRODUCT NUMBER	DESCRIPTION	E-Rate Eligibility	E-Rate Category
760152801	HGS620	GigaSPEED X10D Shielded High Density Information Outlet	100%	Cat 2 (IC, MIBS)
760152819	HGS620-BULK100	GigaSPEED X10D Shielded High Density Information Outlet, 100 pack		



GIGASPEED® X10D G10SP MODULAR PATCH CORDS

MATERIAL ID	DESCRIPTION	MODULAR JACK COLOR	CORD COLOR OPTIONS	UOM	CABLE/CORDAGE LENGTH OPTIONS	E-Rate Eligibility	E-Rate Category
CA111H2	GigaSPEED X10D G10SP CM Modular Patch Cords	0	1,6,7,8,9,C,M,Z	F, M	3-328ft/1-100m	100%	Cat 2 (IC, MIBS)
CA111K2	GigaSPEED X10D G10SP LSZH Modular Patch Cords	0	1,3,6,7,8,9,C,M,Z	F, M	3-328ft/1-100m		

Copper solutions for E-Rate
 Category 6A FTP products



GIGASPEED X10D® EVOLVE HIGH DENSITY SHIELDED MODULAR PANELS

MATERIAL ID	PRODUCT NUMBER	DESCRIPTION	E-Rate Eligibility	E-Rate Category
760150144	360-IPR-MFTP-E-HD6B-1U-24	SYSTIMAX 360™ GigaSPEED X10D® Evolve High Density Shielded Modular Panel, 24 port	100%	Cat 2 (IC, MIBS)
760151290	360-IPR-MFTPA-E-HD6B-1U-24	SYSTIMAX 360™ GigaSPEED X10D® Evolve High Density Shielded Modular Panel, 24 port		
760151498	360-IPR-MFTP-E-HD6B-2U-48	SYSTIMAX 360™ GigaSPEED X10D® Evolve High Density Shielded Modular Panel, 48 port		
760151746	360-IPR-MFTPA-E-HD6B-2U-48	SYSTIMAX 360™ GigaSPEED X10D® Evolve High Density Shielded Modular Panel, 48 port		

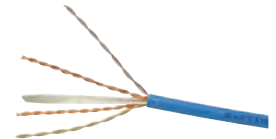
Copper solutions for E-Rate
 Category 6 UTP products



GIGASPEED® XL U/UTP 1071E NON-PLENUM CABLES

MATERIAL ID	PRODUCT NUMBER	PAIR COUNT	JACKET COLOR	LENGTH	PACKAGING	E-Rate Eligibility	E-Rate Category
700212046	1071E WH 4/23 W1000	4	White	1000 ft (305 M)	We Tote Box	100%	Cat 2 (IC, MIBS)
700211931	1071E SL 4/23 W1000	4	Slate	1000 ft (305 m)	We Tote Box		
760004689	1071E BL 4/23 W1000	4	Blue	1000 ft (305 m)	We Tote Box		
700211964	1071E LB 4/23 W1000	4	Light Blue	1000 ft (305 m)	We Tote Box		
700211998	1071E YL 4/23 W1000	4	Yellow	1000 ft (305 m)	We Tote Box		

* Other colors available, contact your local sales representative



GIGASPEED® XL U/UTP 2071E PLENUM CABLES

MATERIAL ID	PRODUCT NUMBER	PAIR COUNT	JACKET COLOR	LENGTH	PACKAGING	E-Rate Eligibility	E-Rate Category
700208101	2071E WH 4/23 W1000	4	White	1000 ft (305 M)	We Tote Box	100%	Cat 2 (IC, MIBS)
700214372	2071E SL 4/23 W1000	4	Slate	1000 ft (305 m)	We Tote Box		
700208093	2071E BL 4/23 W1000	4	Blue	1000 ft (305 m)	We Tote Box		
700210123	2071E YL 4/23 W1000	4	Yellow	1000 ft (305 m)	We Tote Box		

* Other colors available, contact your local sales representative

Copper solutions for E-Rate
 Category 6 UTP products



GIGASPEED® XL 1100GS3 PANELS

MATERIAL ID	PRODUCT NUMBER	DESCRIPTION	iPATCH READY	E-Rate Eligibility	E-Rate Category
760152561	360-IPR-1100-E-GS3-1U-24	24-Port Evolve Patch Panel	Yes	100%	Cat 2 (IC, MIBS)
760152579	360-IPR-1100-E-GS3-2U-48	48-Port Evolve Patch Panel	Yes		
760151308	360-IPR-1100A-E-GS3-1U-24	24-Port Evolve Angled Patch Panel	Yes		
760151753	360-IPR-1100A-E-GS3-2U-48	48-Port Evolve Angled Patch Panel	Yes		
760151167	360-IPR-1100-GS3-DM6	GS3 Evolve Distribution Module 6-Port	–		
760155739	360-E-KIT-1U	1U Evolve Panel Kit	Yes		
760155747	360-E-KIT-2U	2U Evolve Panel Kit	Yes		
760152785	360-A-E-KIT-1U	Angled 1U Evolve Panel Kit	Yes		
760152793	360-A-E-KIT-2U	Angled 2U Evolve Panel Kit	Yes		
760183244	360 and UNP Label Sheet US LTR	Label Sheet for 360 and Universal Panels, US letter	–		



GIGASPEED® XL PATCHMAX® GS3 PANELS

MATERIAL ID	PRODUCT NUMBER	DESCRIPTION	iPATCH READY	E-Rate Eligibility	E-Rate Category
760102244	360-PM-GS3-2U-24	24-Port Patch Panel	Yes	100%	Cat 2 (IC, MIBS)
760117366	360-PM-GS3-2U-48	48-Port Patch Panel	Yes		
760108993	360-PM-KIT-2U-24	2U Panel Kit, 24-Port	Yes		
760117408	360-PM-KIT-2U-48	2U Panel Kit, 48-Port	Yes		
760117382	360-PM-GS3-DM-12	GS3 12-Port Distribution Module Kit	–		
760102269	360-PM-GS3-DM-6	GS3 6-Port Distribution Module Kit	–		
760183244	360 and UNP Label Sheet US LTR	Label Sheet for 360 and Universal Panels, US letter	–		

Copper solutions for E-Rate
 Category 6 UTP products



SYSTEMAX 360 GIGASPEED XL MGS 400

MATERIAL ID	PRODUCT NUMBER	COLOR	E-Rate Eligibility	E-Rate Category
700206667	MGS400-003	Black	100%	Cat 2 (IC, MIBS)
700206683	MGS400-112	Orange		
700206691	MGS400-123	Yellow		
700206709	MGS400-226	Green		
700206725	MGS400-262	White		
700206741	MGS400-317	Red		
700206758	MGS400-318	Blue		
700206675	MGS400-361	Violet		
760074211	MGS400-148	Almond		
700206717	MGS400-246	Ivory		
700206733	MGS400-270	Gray		



SYSTEMAX 360GS8E MODULAR PATCH CORDS

MATERIAL ID	PRODUCT NUMBER	DESCRIPTION	MODULAR JACK COLOR	CORD COLOR OPTIONS	UOM	CABLE/CORD-AGE LENGTH OPTIONS	E-Rate Eligibility	E-Rate Category
CPC3312	GS8E	GS8E Stranded Cordage Modular Patch Cord	0	1,2,3,4,6,7,8,9,B,Z	F, M	1-100ft / 1-30m	100%	Cat 2 (IC, MIBS)
CPC3372	GS8E-SP	GS8E Solid Plenum Cable Modular Cord	0	1,4,6,7,8,9,B,C,Z	F, M	1-100ft / 1-30m		
CPC3482	GS8E117-S	GS8E Single-ended Solid Cable	0	1,2,3,4,6,7,8,9,B,C,Z	F, M	1-100ft / 1-30m		
CPC3472	GS8E117-SP	GS8E Single End Solid Plenum Modular Cord	0	1,4,6,7,8,9,B,C,Z	F, M	1-100ft / 1-30m		

Information regarding T568A standard (A-wired) patch cord is available from your local sales representative.
 Information concerning Zone Extension Cords visit our eCatalog at www.commscope.com



CEILING CONNECTOR ASSEMBLIES

MATERIAL ID	PRODUCT NUMBER	DESCRIPTION	E-Rate Eligibility	E-Rate Category
760235587	CCA-CAT6-PLENUM-BLACK-N018	Category 6 U/UTP cord, plenum, RJ45 to ceiling connector, 1.5 ft, black	100%	Cat 2 (IC, MIBS)

Copper solutions for E-Rate
 PowerSUM (Category 5e UTP products)



POWERSUM U/UTP 1061B SERIES NON-PLENUM CABLES

MATERIAL ID	PRODUCT NUMBER	PAIR COUNT	JACKET COLOR	LENGTH	PACKAGING	E-Rate Eligibility	E-Rate Category
107147787	1061C WH 4/24 W1000	4	White	1000 ft (305 M)	We Tote Box	100%	Cat 2 (IC, MIBS)
106836950	1061C SL 4/24 W1000	4	Slate	1000 ft (305 m)	We Tote Box		
107251696	1061B BL 4/24 W1000	4	Blue	1000 ft (305 m)	We Tote Box		
106871809	1061C LB 4/24 W1000	4	Light Blue	1000 ft (305 m)	We Tote Box		
107001687	1061C YL 4/24 W1000	4	Yellow	1000 ft (305 m)	We Tote Box		



POWERSUM U/UTP 2061F SERIES PLENUM CABLES

MATERIAL ID	PRODUCT NUMBER	PAIR COUNT	JACKET COLOR	LENGTH	PACKAGING	E-Rate Eligibility	E-Rate Category
760041921	2061F WH 4/24 W1000	4	White	1000 ft (305 M)	We Tote Box	100%	Cat 2 (IC, MIBS)
760103044	2061B WH 25/24 R1000	25	White	1000 ft (305 m)	Reel		
760103051	2061B WH 25/24 R4000	25	White	4,000 ft (1,219 m)	Reel		
760041939	2061F SL 4/24 W1000	4	Slate	1000 ft (305 m)	We Tote Box		
760041913	2061F BL 4/24 W1000	4	Blue	1000 ft (305 m)	We Tote Box		

Copper solutions for E-Rate
 PowerSUM (Category 5e UTP products)



POWERSUM 1100 PATCH PANELS

MATERIAL ID	PRODUCT NUMBER	DESCRIPTION	E-Rate Eligibility	E-Rate Category
760182907	1100-U-PS 24	24-Port Patch Panel	100%	Cat 2 (IC, MIBS)
760182915	1100-U-PS 48	48-Port Patch Panel		
760182923	1100A-U-PS-24	24-Port Angled Patch Panel		
760182931	1100A-U-PS-48	48-Port Angled Patch Panel		
760183244	360 and UNP Label Sheet US LTR	Label Sheet for 360 and Universal Panels, US letter		



PATCHMAX® POWERSUM 1100 PATCH PANELS

MATERIAL ID	PRODUCT NUMBER	DESCRIPTION	E-Rate Eligibility	E-Rate Category
760205260	PM2150PSE-24	24-Port Patch Panel	100%	Cat 2 (IC, MIBS)
760205278	PM2150PSE-48	48-Port Patch Panel		

Copper solutions for E-Rate
 PowerSUM (Category 5e UTP products)



POWERSUM INFORMATION OUTLETS

MATERIAL ID	PRODUCT NUMBER	COLOR	E-Rate Eligibility	E-Rate Category
108232695	MPS100E-003	Black	100%	Cat 2 (IC, MIBS)
108232703	MPS100E-112	Orange		
108232711	MPS100E-123	Yellow		
108232729	MPS100E-226	Green		
108232737	MPS100E-246	Electrical Ivory		
108232745	MPS100E-262	Electrical White		
108232752	MPS100E-270	Electrical Gray		
108232760	MPS100E-317	Red		
108232778	MPS100E-318	Blue		
108337726	MPS100E-361	Violet		
108480484	MPS100E-215	Misty Cream		



POWERSUM D8PS MODULAR PATCH CORD

MATERIAL ID	PRODUCT NUMBER	DESCRIPTION	MODULAR JACK COLOR	CORD COLOR OPTIONS	UOM	CABLE/CORD-AGE LENGTH OPTIONS	E-Rate Eligibility	E-Rate Category
CPC6642	D8PS	D8PS Stranded Cordage Modular Patch Cord	0	1,2,3,4,6,7,8,9,B,Z	F, M	1-100ft / 1-30m	100%	Cat 2 (IC, MIBS)

Information regarding T568A standard (A-wired) patch cord is available from your local sales representative.

Faceplates for E-Rate



ECO-FRIENDLY FACEPLATES

MATERIAL ID	PRODUCT NUMBER	DESCRIPTION	COLOR	E-Rate Eligibility	E-Rate Category
760246283	M12FR-262	M12FR-262 Unshuttered Faceplate, 2-port, White, Eco-Bulk Package	White	100%	Cat 2 (IC, MIBS)
760246281	M12D-F-262	M12D-F-262 Faceplate, 2-port, White, Eco-Bulk Packaging	White		
760246288	M14D-F-262	M14D-F-262 Double Faceplate, 4-port, White, Eco-Bulk Package	White		



STAINLESS STEEL FACEPLATES

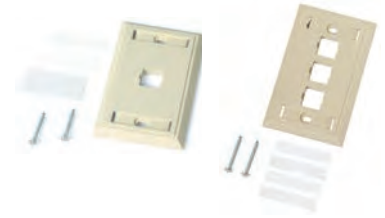
MATERIAL ID	PRODUCT NUMBER	DESCRIPTION	COLOR	E-Rate Eligibility	E-Rate Category
760100867	M11SP	1 Port Stainless Steel Faceplate	Stainless Steel	100%	Cat 2 (IC, MIBS)
760072074	M11SP-L	1-Port 1-Gang SS Faceplate with label	Stainless Steel		
108615188	M12SP	2 port Stainless Steel Faceplate	Stainless Steel		
760072181	M12SP-L	2-Port 1-Gang SS Faceplate with label	Stainless Steel		
108615196	M13SP 3	3 port Stainless Steel Faceplate	Stainless Steel		
760072199	M13SP-L	3-Port 1-Gang SS Faceplate with label	Stainless Steel		
108615204	M14SP 4	4 port Stainless Steel Faceplate	Stainless Steel		
760072207	M14SP-L	4-Port 1-Gang SS Faceplate with label	Stainless Steel		
108615212	M16SP 6	6 port Stainless Steel Faceplate	Stainless Steel		
760072215	M16SP-L	6-Port 1-Gang SS Faceplate with label	Stainless Steel		



MULTIMEDIA FACEPLATES

MATERIAL ID	PRODUCT NUMBER	DESCRIPTION	COLOR	E-Rate Eligibility	E-Rate Category
108564675	M13CLS-246	3 Port Multimedia Faceplate, Ivory (1.84 x 3.13 x 0.29 in)	Ivory	100%	Cat 2 (IC, MIBS)
108564683	M13CLS-262	3 Port Multimedia Faceplate, White (1.84 x 3.13 x 0.29 in)	White		
108564709	M13CLS-003	3 Port Multimedia Faceplate, Black (1.84 x 3.13 x 0.29 in)	Black		
108168477	M13CLS-215	3 Port Multimedia Faceplate, Cream (1.84 x 3.13 x 0.29 in)	Cream		

Faceplates for E-Rate



FLUSH MOUNT FACEPLATES

MATERIAL ID	PRODUCT NUMBER	DESCRIPTION	COLOR	E-Rate Eligibility	E-Rate Category
108258401	M10L-003	1 Port Modular Faceplate	Black	100%	Cat 2 (IC, MIBS)
108258419	M10L-246	1 Port Modular Faceplate	Ivory		
108258427	M10L-262	1 Port Modular Faceplate	White		
760181743	M10L-266	1 Port Modular Faceplate	ProWhite		
108258435	M10L-270	1 Port Modular Faceplate	Gray		
108168485	M12L-003	2 Port Modular Faceplate	Black		
108168477	M12L-246	2 Port Modular Faceplate	Ivory		
108168469	M12L-262	2 Port Modular Faceplate	White		
760181701	M12L-266	2 Port Modular Faceplate	ProWhite		
108168451	M12L-270	2 Port Modular Faceplate	Gray		
108168527	M13L-003	3 Port Modular Flush Mount Faceplate	Black		
108168519	M13L-246	3 Port Modular Flush Mount Faceplate	Ivory		
108168501	M13L-262	3 Port Modular Flush Mount Faceplate	White		
760181719	M13L-266	3 Port Modular Flush Mount Faceplate	ProWhite		
108168493	M13L-270	3 Port Modular Flush Mount Faceplate	Gray		
108168568	M14L-003	4 Port Modular Flush Mount Faceplate	Black		
108168550	M14L-246	4 Port Modular Flush Mount Faceplate	Ivory		
108168543	M14L-262	4 Port Modular Flush Mount Faceplate	White		
760181727	M14L-266	4 Port Modular Flush Mount Faceplate	ProWhite		
108168535	M14L-270	4 Port Modular Flush Mount Faceplate	Gray		
108168600	M16L-003	6 Port Modular Flush Mount Faceplate	Black		
108168592	M16L-246	6 Port Modular Flush Mount Faceplate	Ivory		
108168584	M16L-262	6 Port Modular Flush Mount Faceplate	White		
760181735	M16L-266	6 Port Modular Flush Mount Faceplate	ProWhite		
108168576	M16L-270	6 Port Modular Flush Mount Faceplate	Gray		
108685009	M28L-003	8 Port Modular Flush Mount Faceplate	Black		
108685017	M28L-246	8 Port Modular Flush Mount Faceplate	Ivory		
108685025	M28L-262	8 Port Modular Flush Mount Faceplate	White		
760181768	M28L-266	8 Port Modular Flush Mount Faceplate	ProWhite		
108685033	M28L-270	8 Port Modular Flush Mount Faceplate	Gray		

Faceplates for E-Rate



MODULAR OUTLET WALL PHONE FACEPLATES

MATERIAL ID	PRODUCT NUMBER	DESCRIPTION	COLOR	E-Rate Eligibility	E-Rate Category
108258443	M10LW-003	1 Port Modular Outlet Wall Phone Faceplate	Black	100%	Cat 2 (IC, MIBS)
108258450	M10LW-246	1 Port Modular Outlet Wall Phone Faceplate	Ivory		
108258427	M10LW-262	1 Port Modular Outlet Wall Phone Faceplate	White		
760181750	M10LW-266	1 Port Modular Outlet Wall Phone Faceplate	ProWhite		



MODULAR FURNITURE FACEPLATES

MATERIAL ID	PRODUCT NUMBER	DESCRIPTION	COLOR	E-Rate Eligibility	E-Rate Category
106650864	M13C-003	3 Port Modular Furniture Faceplate (1.84 x 3.13 x 0.29 in)	Black	100%	Cat 2 (IC, MIBS)
106650880	M13C-246	3 Port Modular Furniture Faceplate (1.84 x 3.13 x 0.29 in)	Ivory		
106650898	M13C-262	3 Port Modular Furniture Faceplate (1.84 x 3.13 x 0.29 in)	White		
106701154	M13C-270	3 Port Modular Furniture Faceplate (1.84 x 3.13 x 0.29 in)	Gray		
760118240	M14CE-E -003	Faceplate 0.08 Snap	Black		
760118257	M14CE-E -246	Faceplate 0.08 Snap	Ivory		
760118232	M14CE-E -262	Faceplate 0.08 Snap	White		
760118265	M14CE-E -270	Faceplate 0.08 Snap	Gray		



DESIGNER FACEPLATES

MATERIAL ID	PRODUCT NUMBER	DESCRIPTION	COLOR	E-Rate Eligibility	E-Rate Category
108332982	M10LE-003	1 Port Designer Faceplate	Black	100%	Cat 2 (IC, MIBS)
108333006	M10LE-246	1 Port Designer Faceplate	Ivory		
108333014	M10LE-262	1 Port Designer Faceplate	White		
760181933	M10LE-266	1 Port Designer Faceplate	ProWhite		
108333022	M10LE-270	1 Port Designer Faceplate	Gray		

Faceplates for E-Rate



FLUSH MOUNT MODULAR MOUNTING FRAME

MATERIAL ID	PRODUCT NUMBER	DESCRIPTION	COLOR	E-Rate Eligibility	E-Rate Category
108265430	M108FR3-003	M108 Flush Mounted Modular Mounting Frame, three port	Black	100%	Cat 2 (IC, MIBS)
108265448	M108FR3-246	M108 Flush Mounted Modular Mounting Frame, three port	Ivory		
108265455	M108FR3-262	M108 Flush Mounted Modular Mounting Frame, three port	White		
760181867	M108FR3-266	M108 Flush Mounted Modular Mounting Frame, three port	ProWhite		
108265463	M108FR3-270	M108 Flush Mounted Modular Mounting Frame, three port	Gray		
760092163	M108FR1-003	M108 Flush Mounted Modular Mounting Frame, one port	Black		
760092064	M108FR1-148	M108 Flush Mounted Modular Mounting Frame, one port	Almond		
760092189	M108FR1-262	M108 Flush Mounted Modular Mounting Frame, one port	White		

Cable Management for E-Rate Equipment Racks and Filler Panels



19" EQUIPMENT RACKS

MATERIAL ID	PRODUCT NUMBER	DESCRIPTION	E-Rate Eligibility	E-Rate Category
760082479	RK3-45A	2-post aluminum rack, 3" channel, 7 ft (12-24 tapped rails)	100%	Cat 2 (IC, MIBS)
760082495	RK6-45A	2-post aluminum rack, 6" channel, 7 ft (12-24 tapped rails)		
760082529	RK4P45-29A	4-post aluminum rack, 29", 7 ft (12-24 tapped rails)		
760082560	RK4P45-36A	4-post aluminum rack, 36", 7 ft (12-24 tapped rails)		



FILLER PANELS

MATERIAL ID	PRODUCT NUMBER	DESCRIPTION	E-Rate Eligibility	E-Rate Category
760162065	CPP-FPANEL-19-1U	Filler Panel, 1U x 19 in., Solid, Black	100%	Cat 2 (IC, MIBS)
760162073	CPP-FPANEL-19-2U	Filler Panel, 2U x 19 in., Solid, Black		
760162081	CPP-FPANEL-19-3U	Filler Panel, 3U x 19 in., Solid, Black		

Cable Management for E-Rate Horizontal Cable Management

HORIZONTAL CABLE MANAGEMENT				
MATERIAL ID	PRODUCT NUMBER	DESCRIPTION	E-Rate Eligibility	E-Rate Category
760072942	HTK-19-SS-1U	1U 19" Single Sided Horizontal Trough Kit, black	100%	Cat 2 (IC, MIBS)
760072959	HTK-19-SS-2U	2U 19" Single Sided Horizontal Trough Kit, black		
760072967	HTK-19-SS-3U	3U 19" Single Sided Horizontal Trough Kit, black		
760128843	HTK-19-DS-1U	1U 19" Double Sided Horizontal Trough Kit, black		
760128850	HTK-19-DS-2U	2U 19" Double Sided Horizontal Trough Kit, black		
760128868	HTK-19-DS-3U	3U 19" Double Sided Horizontal Trough Kit, black		
760172908	HTK-19-SS-1U-SILVER	1U 19" Single Sided Horizontal Trough Kit, silver		
760172916	HTK-19-SS-2U-SILVER	2U 19" Single Sided Horizontal Trough Kit, silver		
760172924	HTK-19-SS-3U-SILVER	3U 19" Single Sided Horizontal Trough Kit, silver		
760038240	HCM-19-SS-1U	1U 19" Patchcord Management		
760038257	HCM-19-SS-2U	2U 19" Patchcord Management		
760172882	HCM-19-SS-1U-SILVER	1U 19" Patchcord Management, silver		
760172890	HCM-19-SS-2U-SILVER	2U 19" Patchcord Management, silver		



CABLE MANAGERS				
MATERIAL ID	DESCRIPTION	E-Rate Eligibility	E-Rate Category	
2269081-1	1U High-Density Mini Front-Loading Cable Manager	100%	Cat 2 (IC, MIBS)	
2269081-2	2U High-Density Mini Front-Loading Cable Manager			



Cable Management for E-Rate
 Vertical Cable Management

VERTICAL CABLE MANAGEMENT				
MATERIAL ID	PRODUCT NUMBER	DESCRIPTION	E-Rate Eligibility	E-Rate Category
760244779	VCM-DS-84-6B	Double Sided 6 X 84 VCM, black doors	100%	Cat 2 (IC, MIBS)
760244780	VCM-DS-84-8B	Double Sided 8 X 84 VCM, black doors		
760244781	VCM-DS-84-10B	Double Sided 10 X 84 VCM, black doors		
760244782	VCM-DS-84-12B	Double Sided 12 X 84 VCM, black doors		
760244791	VCM-SS-84-6B	Single Sided 6 X 84 VCM, black doors		
760244792	VCM-SS-84-8B	Single Sided 8 X 84 VCM, black doors		
760244793	VCM-SS-84-10B	Single Sided 10 X 84 VCM, black doors		
760244794	VCM-SS-84-12B	Single Sided 12 X 84 VCM, black doors		
760244775	VCM-DS-84-6	Double Sided 6 X 84 VCM, silver doors		
760244776	VCM-DS-84-8	Double Sided 8 X 84 VCM, silver doors		
760244777	VCM-DS-84-10	Double Sided 10 X 84 VCM, silver doors		
760244778	VCM-DS-84-12	Double Sided 12 X 84 VCM, silver doors		
760244787	VCM-SS-84-6	Single Sided 6 X 84 VCM, silver doors		
760244788	VCM-SS-84-8	Single Sided 8 X 84 VCM, silver doors		
760244789	VCM-SS-84-10	Single Sided 10 X 84 VCM, silver doors		
760244790	VCM-SS-84-12	Single Sided 12 X 84 VCM, silver doors		





RUCKUS[®]

Access Points for E-Rate



INDOOR ACCESS POINTS				
Product Name	SKU/Part Number	Description	E-Rate Eligibility %	E-Rate Category
R850	9U1-R850-XX00	RUCKUS Unleashed R850 dual-band 802.11abgn/ac/ax Wireless Access Point with Multi-Gigabit Ethernet backhaul, 8x8:8 streams (5GHz) 4x4:4 streams (2.4GHz), OFDMA, MU-MIMO, BeamFlex+, dual ports, PoH/uPoE/802.3at PoE support. Does not include power adapter or PoE injector. Includes Limited Lifetime Warranty.	100%	Cat 2 (IC, MIBS)
R750	901-R750-XX00	RUCKUS R750 dual-band 802.11abgn/ac/ax Wireless Access Point with Multi-Gigabit Ethernet backhaul and onboard BLE/Zigbee, 4x4:4 streams (5GHz) 4x4:4 streams (2.4GHz), OFDMA, MU-MIMO, BeamFlex+, dual ports, 802.3at PoE support. Does not include power adapter or PoE injector. Includes Limited Lifetime Warranty.		
R730	901-R730-XX00	RUCKUS R730 dual-band 802.11abgn/ac/ax Wireless Access Point with Multi-Gigabit Ethernet backhaul, 8x8:8 streams (5GHz) 4x4:4 streams (2.4GHz), OFDMA, MU-MIMO, BeamFlex+, dual ports, PoH/uPoE/802.3at PoE support. Does not include power adapter or PoE injector. Includes Limited Lifetime Warranty.		
R710	9U1-R710-xx00	RUCKUS R710 Unleashed, dual-band 802.11abgn/ac Wireless Access Point, 4x4:4 streams, MU-MIMO, BeamFlex+, dual ports, 802.3af/at PoE support. Does not include power adapter or PoE injector. Includes Limited Lifetime Warranty.		
	901-R710-XX00	RUCKUS R710 dual-band 802.11abgn/ac Wireless Access Point, 4x4:4 streams, MU-MIMO, BeamFlex+, dual ports, 802.3af/at PoE support. Does not include power adapter or PoE injector. Includes Limited Lifetime Warranty.		
R650	901-R650-xx00	RUCKUS R650 dual-band 802.11abgn/ac/ax Wireless Access Point with Multi-Gigabit Ethernet backhaul, 4x4:4 + 2x2:2 streams, OFDMA, MU-MIMO, BeamFlex+, dual ports, PoH/uPoE/802.3at PoE support. Does not include power adapter or PoE injector. Includes Limited Lifetime Warranty.		
	9U1-R650-XX00	RUCKUS Unleashed R650 dual-band 802.11abgn/ac/ax Wireless Access Point with Multi-Gigabit Ethernet backhaul, 4x4:4 + 2x2:2 streams, OFDMA, MU-MIMO, BeamFlex+, dual ports, PoH/uPoE/802.3at PoE support. Does not include power adapter or PoE injector. Includes Limited Lifetime Warranty.		
R550	9U1-R550-XX00	RUCKUS R550 dual-band 802.11abgn/ac/ax Wireless Access Point with Multi-Gigabit Ethernet backhaul and onboard BLE/Zigbee, 2x2:2 streams (2.4GHz/5GHz) OFDMA, MU-MIMO, BeamFlex+, dual ports, 802.3at PoE support. Does not include power adapter or PoE injector. Includes Limited Lifetime Warranty.		
	9U1-R550-XX00	RUCKUS Unleashed R550 dual-band 802.11abgn/ac/ax Wireless Access Point with Multi-Gigabit Ethernet backhaul and onboard BLE/Zigbee, 2x2:2 streams (2.4GHz/5GHz) OFDMA, MU-MIMO, BeamFlex+, dual ports, 802.3at PoE support. Does not include power adapter or PoE injector. Includes Limited Lifetime Warranty.		
R350	901-R350-xx02	RUCKUS R350 dual-band 802.11abgn/ac/ax Wireless Access Points, 2x2:2 streams (2.4GHz/5GHz) OFDMA, MU-MIMO, BeamFlex+, 802.3af PoE support. Does not include power adapter or PoE injector. Includes Limited Lifetime Warranty		
R320	901-R320-XX02	Entry level RUCKUS R320, dual band 802.11ac Indoor Access Point, BeamFlex, 2x2:2, 1-Port, PoE, Does not include power adapter or PoE Injector. Limited Lifetime Warranty.		
	9U1-R320-XX02	RUCKUS R320 Unleashed, dual band 802.11ac Wave 2 Indoor Access Point, BeamFlex, 2x2:2, 1-Port, PoE. Does not include power adapter or PoE Injector. Limited Lifetime Warranty.		



T710



T750

OUTDOOR ACCESS POINTS

Product Name	SKU/Part Number	Description	E-Rate Eligibility %	E-Rate Category
T750	901-T750-XX01	RUCKUS T750 802.11ax Outdoor Wireless Access Point, 4x4:4 Stream, Omnidirectional Beamflex+ coverage, 2.4GHz and 5GHz concurrent dual band, (1x) 2.5G Ethernet port, (1x) 10/100/1000 Ethernet port, 100-240 Vac, POE in and PSE out, Fiber SFP/SFP+, GPS, IP-67 Outdoor enclosure, -40 to 65C Operating Temperature.	100%	Cat 2 (IC, MIBS)
	901-T750-XX51	RUCKUS T750SE 802.11ax Outdoor Wireless Access Point, 4x4:4 Stream, 120-Degree Sector antenna included and option to attach external antennae, 2.4GHz and 5GHz concurrent dual band, (1x) 2.5G Ethernet port, (1x) 10/100/1000 Ethernet port, 100-240 Vac, POE in and PSE out, Fiber SFP/SFP+, GPS, IP-67 Outdoor enclosure, -40 to 65C Operating Temperature.		
	9U1-T750-XX01	RUCKUS Unleashed T750 802.11ax Outdoor Wireless Access Point, 4x4:4 Stream, Omnidirectional Beamflex+ coverage, 2.4GHz and 5GHz concurrent dual band, (1x) 2.5G Ethernet port, (1x) 10/100/1000 Ethernet port, 100-240 Vac, POE in and PSE out, Fiber SFP/SFP+, GPS, IP-67 Outdoor enclosure, -40 to 65C Operating Temperature.		
	9U1-T750-XX51	RUCKUS Unleashed T750SE 802.11ax Outdoor Wireless Access Point, 4x4:4 Stream, 120-Degree Sector antenna included and option to attach external antennae, 2.4GHz and 5GHz concurrent dual band, (1x) 2.5G Ethernet port, (1x) 10/100/1000 Ethernet port, 100-240 Vac, POE in and PSE out, Fiber SFP/SFP+, GPS, IP-67 Outdoor enclosure, -40 to 65C Operating Temperature.		
T710	901-T710-xx01	RUCKUS T710 802.11ac Outdoor Wireless Access Point, 4x4:4 Stream, Omnidirectional Beamflex+ coverage, 2.4GHz and 5GHz concurrent dual band, Dual 10/100/1000 Ethernet ports, 90-264 Vac, POE in and POE out, Fiber SFP, GPS, IP-67 Outdoor enclosure, -40 to 65C Operating Temperature. Includes standard 1-year warranty. For box contents, see Shipping Container Contents.	100%	Cat 2 (IC, MIBS)
	901-T710-xx51	RUCKUS T710s 802.11ac Outdoor Wireless Access Point, 4x4:4 Stream, 120 degree sector Beamflex+ coverage, 2.4GHz and 5GHz concurrent dual band, Dual 10/100/1000 Ethernet ports, 90-264 Vac, POE in and POE out, Fiber SFP, GPS, IP-67 Outdoor enclosure, -40 to 65C Operating Temperature. Includes standard 1-year warranty. For box contents, see Shipping Container Contents.		
	9U1-T710-xx01	RUCKUS T710 Unleashed, 802.11ac Outdoor Wireless Access Point, 4x4:4 Stream, Omnidirectional Beamflex+ coverage, 2.4GHz and 5GHz concurrent dual band, Dual 10/100/1000 Ethernet ports, 90-264 Vac, POE in and POE out, Fiber SFP, GPS, IP-67 Outdoor enclosure, -40 to 65C Operating Temperature. Includes standard 1-year warranty. For box contents, see Shipping Container Contents.		
	9U1-T710-xx51	RUCKUS T710s Unleashed, 802.11ac Outdoor Wireless Access Point, 4x4:4 Stream, 120 degree sector Beamflex+ coverage, 2.4GHz and 5GHz concurrent dual band, Dual 10/100/1000 Ethernet ports, 90-264 Vac, POE in and POE out, Fiber SFP, GPS, IP-67 Outdoor enclosure, -40 to 65C Operating Temperature. Includes standard 1-year warranty. For box contents, see Shipping Container Contents.		

Access Points for E-Rate



T610

OUTDOOR ACCESS POINTS				
Product Name	SKU/Part Number	Description	E-Rate Eligibility %	E-Rate Category
T610	901-T610-XX01	RUCKUS T610 802.11ac Outdoor Wireless Access Point, 4x4:4 Stream, Omnidirectional Beamflex+ coverage, 2.4GHz and 5GHz concurrent dual band, Dual 10/100/1000 Ethernet ports, POE in, IP-67 Outdoor enclosure, -40 to 65C Operating Temperature. Includes standard 1-year warranty. Mounting kit sold as separate accessory (902-0125-0000). For box contents, see Shipping Container Contents.	100%	Cat 2 (IC, MIBS)
	901-T610-XX51	RUCKUS T610s 802.11ac Outdoor Wireless Access Point, 4x4:4 Stream, 120 degree sector Beamflex+ coverage, 2.4GHz and 5GHz concurrent dual band, Dual 10/100/1000 Ethernet ports, POE in, IP-67 Outdoor enclosure, -40 to 65C Operating Temperature. Includes standard 1-year warranty. Mounting kit sold as separate accessory (902-0125-0000). For box contents, see Shipping Container Contents.		
	9U1-T610-xx01	Unleashed T610 802.11ac Wave 2 Outdoor Wireless Access Point, 4x4:4 Stream, MU-MIMO, Omnidirectional Beamflex+ coverage, 2.4GHz and 5GHz concurrent dual band, Dual 10/100/1000 Ethernet ports, POE in, IP-67 Outdoor enclosure, -40 to 65C Operating Temperature. Includes standard 1-year warranty. Mounting kit sold as separate accessory (902-0125-0000). For box contents, see Shipping Container Contents.		
	9U1-T610-xx51	Unleashed T610s 802.11ac Wave 2 Outdoor Wireless Access Point, 4x4:4 Stream, MU-MIMO, 120 degree sector Beamflex+ coverage, 2.4GHz and 5GHz concurrent dual band, Dual 10/100/1000 Ethernet ports, POE in, IP-67 Outdoor enclosure, -40 to 65C Operating Temperature. Includes standard 1-year warranty. Mounting kit sold as separate accessory (902-0125-0000). For box contents, see Shipping Container Contents.		



T350

OUTDOOR ACCESS POINTS				
Product Name	SKU/Part Number	Description	E-Rate Eligibility %	E-Rate Category
T350	901-T350-XX20	RUCKUS T350c, omni, outdoor access point, 802.11ax 2x2:2 internal BeamFlex+, dual band concurrent. One Ethernet port, PoE input. -20°C to 65°C Operating Temperature. Includes mounting bracket. Does not include PoE injector.	100%	Cat 2 (IC, MIBS)
	901-T350-XX40	RUCKUS T350d, omni, outdoor access point, 802.11ax 2x2:2 internal BeamFlex+, dual band concurrent. One Ethernet port, PoE input, DC input, USB. -40°C to 65°C Operating Temperature. Includes mounting bracket. Does not include PoE injector.		



T310

OUTDOOR ACCESS POINTS

Product Name	SKU/Part Number	Description	E-Rate Eligibility %	E-Rate Category
T310	901-T310-XX40	Entry-level T310d, omni, outdoor Access point, 802.11ac Wave 2 2x2:2 internal BeamFlex+, dual band concurrent. One ethernet port, PoE input, DC input and USB port. Includes mounting bracket and one year warranty. Does not include PoE injector.	100%	Cat 2 (IC, MIBS)
	901-T310-XX20	RUCKUS T310c, omni, outdoor Access point, 802.11ac Wave 2 2x2:2 internal BeamFlex+, dual band concurrent. One ethernet port, PoE input. Includes mounting bracket and one year warranty. Does not include PoE injector.		
	901-T310-XX51	RUCKUS T310s, 120x30 deg, Outdoor 802.11ac Wave 2 2x2:2, 120 degree sector, dual band concurrent Access point. One ethernet port, PoE input, DC input and USB port. Includes adjustable mounting bracket and one year warranty. Does not include PoE injector.		
	901-T310-XX61	T310n, 30x30 deg, Outdoor 802.11ac 2x2:2 Wave 2, narrow beam, dual band concurrent access point. One Ethernet port, PoE input, DC Input and USB port. Includes adjustable mounting bracket and one year warranty. Does not include PoE injector		
	9U1-T310-XX20	Unleashed T310c, omni, outdoor access point, 802.11ac Wave 2 2x2:2 internal BeamFlex+, dual band concurrent. One ethernet port, PoE input and -200 C. Includes mounting bracket and one year warranty. Does not include PoE injector.		
	9U1-T310-XX40	Unleashed T310d, omni, outdoor access point, 802.11ac Wave 2 2x2:2 internal BeamFlex+, dual band concurrent. One ethernet port, PoE input, -400 C, DC input and USB port. Includes mounting bracket and one year warranty. Does not include PoE injector.		
	9U1-T310-XX51	Unleashed T310s, 120x30 deg, Outdoor 802.11ac Wave 2 2x2:2, 120 degree sector, dual band concurrent access point. One ethernet port, PoE input, -400 C, DC input and USB port. Includes adjustable mounting bracket and one year warranty. Does not include PoE injector.		
	9U1-T310-XX61	Unleashed T310n, 30x30 deg, Outdoor 802.11ac 2x2:2 Wave 2, narrow beam, dual band concurrent access point. One Ethernet port, PoE input, -400 C, DC Input and USB port. Includes adjustable mounting bracket and one year warranty. Does not include PoE injector		

ICX Switches for E-Rate



ICX 7150 – Compact

ICX 7150 – COMPACT (ACCESS/EDGE SWITCH)			
SKU/Part Number	Description	E-Rate Eligibility %	E-Rate Category
ICX7150-C10ZP-2X10GR	ICX 7150 Compact Switch, 2x 100/1000/2.5/5/10G PoH ports, 2x 100/1000/2.5G PoH ports, 6x 100/1000/2.5G PoE+ ports, 2x 10G SFP uplink-ports, 240W PoE budget, L3 features (OSPF, VRRP, PIM, PBR)	100%	Cat 2 (IC, MIBS)
ICX7150-C10ZP-2X10GR-RMT3	ICX 7150 Compact Switch, 2x 100/1000/2.5/5/10G PoH ports, 2x 100/1000/2.5G PoH ports, 6x 100/1000/2.5G PoE+ ports, 2x 10G SFP uplink-ports, 240W PoE budget, L3 features (OSPF, VRRP, PIM, PBR), 3 year remote support.		
ICX7150-C10ZP-2X10GR-A	ICX 7150 Compact Switch, 2x 100/1000/2.5/5/10G PoH ports, 2x 100/1000/2.5G PoH ports, 6x 100/1000/2.5G PoE+ ports, 2x 10G SFP uplink-ports, 240W PoE budget, L3 features (OSPF, VRRP, PIM, PBR), TAA		
ICX7150-C08P-2X1G-RMT3	ICX 7150 Compact Switch, 8x 10/100/1000 PoE+ ports, 2x 1G SFP uplink-ports, 62W PoE budget, L2 (switch image only), 3 year remote support.		
ICX7150-C08PT-2X1G-RMT3	ICX 7150 Compact Switch Extended Temp, 8x 10/100/1000 PoE+ ports, 2x 1G SFP uplink-ports, 62W PoE budget, L2 (switch image only), 3 year remote support. 13 month hardware warranty.		



ICX 7150

ICX 7150 (ACCESS/EDGE SWITCH)			
SKU/Part Number	Description	E-Rate Eligibility %	E-Rate Category
ICX7150-24-4X1G	ICX 7150 Switch, 24x 10/100/1000 ports, 2x 1G RJ45 uplink-ports, 4x 1G SFP uplink-ports upgradable to up to 4x 10G SFP+ with license, basic L3 (static routing and RIP)	100%	Cat 2 (IC, MIBS)
ICX7150-24-2X10G	ICX 7150 Switch, 24x 10/100/1000 ports, 2x 1G RJ45 uplink-ports, 2x 1G SFP and 2x 10G SFP+ uplink-ports upgradable to 4x 10G SFP+ with license, basic L3 (static routing and RIP)		
ICX7150-24-4X10GR-RMT3	ICX 7150 Switch, 24x 10/100/1000 ports, 2x 1G RJ45 uplink-ports, 4x 10G SFP+ uplink-ports, L3 features (OSPF, VRRP, PIM, PBR), 3 year remote support.		
ICX7150-24-4X10GR-A	ICX 7150 Switch, 24x 10/100/1000 ports, 2x 1G RJ45 uplink-ports, 4x 10G SFP+ uplink-ports, L3 features (OSPF, VRRP, PIM, PBR), TAA		
ICX7150-24P-4X1G	ICX 7150 Switch, 24x 10/100/1000 PoE+ ports, 2x 1G RJ45 uplink-ports, 4x 1G SFP uplink ports upgradable to up to 4x 10G SFP+ with license, 370W PoE budget, basic L3 (static routing and RIP)		
ICX7150-24P-2X10G	ICX 7150 Switch, 24x 10/100/1000 PoE+ ports, 2x 1G RJ45 uplink-ports, 2x 1G SFP and 2x 10G SFP+ uplink-ports upgradable to 4x 10G SFP+ with license 370W PoE budget, basic L3 (static routing and RIP)		
ICX7150-24P-4X10GR-RMT3	ICX 7150 Switch, 24x 10/100/1000 PoE+ ports, 2x 1G RJ45 uplink-ports, 4x 10G SFP+ uplink-ports, 370W PoE budget, L3 features (OSPF, VRRP, PIM, PBR), 3 year remote support.		

ICX Switches for E-Rate

ICX 7150 (ACCESS/EDGE SWITCH)			
SKU/Part Number	Description	E-Rate Eligibility %	E-Rate Category
ICX7150-24P-4X10GR-A	ICX 7150 Switch, 24x 10/100/1000 PoE+ ports, 2x 1G RJ45 uplink-ports, 4x 10G SFP+ uplink-ports, 370W PoE budget, L3 features (OSPF, VRRP, PIM, PBR), TAA	100%	Cat 2 (IC, MIBS)
ICX7150-48-2X10G	ICX 7150 Switch, 48x 10/100/1000 ports, 2x 1G RJ45 uplink-ports, 2x 1G SFP and 2x 10G SFP+ uplink-ports upgradable to 4x 10G SFP+ with license, basic L3 (static routing and RIP)		
ICX7150-48-4X10GR-RMT3	ICX 7150 Switch, 48x 10/100/1000 ports, 2x 1G RJ45 uplink-ports, 4x 10G SFP+ uplink-ports, L3 features (OSPF, VRRP, PIM, PBR), 3 year remote support.		
ICX7150-48-4X10GR-A	ICX 7150 Switch, 48x 10/100/1000 ports, 2x 1G RJ45 uplink-ports, 4x 10G SFP+ uplink-ports, L3 features (OSPF, VRRP, PIM, PBR), TAA		
ICX7150-48P-4X1G	ICX 7150 Switch, 48x 10/100/1000 PoE+ ports, 2x 1G RJ45 uplink-ports, 4x 1G SFP uplink ports upgradable to up to 4x 10G SFP+ with license, 370W PoE budget, basic L3 (static routing and RIP)		
ICX7150-48P-2X10G	ICX 7150 Switch, 48x 10/100/1000 PoE+ ports, 2x 1G RJ45 uplink-ports, 2x 1G SFP and 2x 10G SFP+ uplink-ports upgradable to 4x 10G SFP+ with license, 370W PoE budget, basic L3 (static routing and RIP)		
ICX7150-48P-4X10GR-RMT3	ICX 7150 Switch, 48x 10/100/1000 PoE+ ports, 2x 1G RJ45 uplink-ports, 4x 10G SFP+ uplink-ports, 370W PoE budget, L3 features (OSPF, VRRP, PIM, PBR), 3 year remote support.		
ICX7150-48P-4X10GR-A	ICX 7150 Switch, 48x 10/100/1000 PoE+ ports, 2x 1G RJ45 uplink-ports, 4x 10G SFP+ uplink-ports, 370W PoE budget, L3 features (OSPF, VRRP, PIM, PBR), TAA		
ICX7150-48PF-4X1G	ICX 7150 Switch, 48x 10/100/1000 PoE+ ports, 2x 1G RJ45 uplink-ports, 4x 1G SFP uplink ports upgradable to up to 4x 10G SFP+ with license, 740W PoE budget, basic L3 (static routing and RIP)		
ICX7150-48PF-2X10G	ICX 7150 Switch, 48x 10/100/1000 PoE+ ports, 2x 1G RJ45 uplink-ports, 2x 1G SFP and 2x 10G SFP+ uplink-ports upgradable to 4x 10G SFP+ with license, 740W PoE budget, basic L3 (static routing and RIP)		
ICX7150-48PF-4X10GR-RMT3	ICX 7150 Switch, 48x 10/100/1000 PoE+ ports, 2x 1G RJ45 uplink-ports, 4x 10G SFP+ uplink-ports, 740W PoE budget, L3 features (OSPF, VRRP, PIM, PBR), 3 year remote support.		
BR-ICX-7150-210U410R-P-01	CoE certificate license to upgrade any ICX 7150 24-port or 48-port model from 2x 1G SFP & 2x 10G SFP+ to 4x 10G SFP+ uplink ports. Also includes L3 features (OSPF, VRRP, PIM, PBR)		
BR-ICX-7150-41U210-P-01	CoE certificate license to upgrade any ICX 7150 24-port or 48-port model from 4x 1G SFP to 2x 1G SFP & 2x 10G SFP+ uplink ports.		
BR-ICX-7150-41U410R-P-01	CoE certificate license to upgrade any ICX 7150 24-port or 48-port model from 4x 1G SFP to 4x 10G SFP+ uplink ports. Also includes L3 features (OSPF, VRRP, PIM, PBR)		
BR-ICX-7150C-21U210R-P-01	CoE certificate license to upgrade the ICX 7150-C12P compact switch from 2x 1G SFP to 2x 10G SFP+ uplink ports. Also includes L3 features (OSPF, VRRP, PIM, PBR)		
BR-ICX-7150Z210U810R-P-01	CoE certificate license to upgrade the ICX 7150-48ZP, Z-Series switch from 2x 10G SFP+ to 8x 10G SFP+ uplink ports. Also includes L3 features (OSPF, VRRP, PIM, PBR)		

ICX Switches for E-Rate



ICX 7150 Z-series

ICX 7150 Z-SERIES (ACCESS/EDGE SWITCH)

SKU/Part Number	Description	E-Rate Eligibility %	E-Rate Category
ICX7150-48ZP-E2X10G	ICX 7150-48ZP Switch Z-Series, 16x 100/1000/2.5G PoH ports, 32x 10/100/1000 PoE+ ports, 2x 10G SFP+ and 6x 1G SFP uplink-ports upgradable to 8x 10G SFP+ with license. Basic L3 (static routing and RIP). 1 RPS20-E Power Supply, 1 Fan tray.	100%	Cat 2 (IC, MIBS)
ICX7150-48ZP-E8X10GR-RMT3	ICX 7150-48ZP Switch Z-Series, 16x 100/1000/2.5G PoH ports, 32x 10/100/1000 PoE+ ports, 8x 10G SFP+, L3 features (OSPF, VRRP, PIM, PBR). 1 RPS20-E Power Supply, 1 Fan tray. 3 years remote support		
ICX7150-48ZP-E8X10GR2-A	ICX 7150-48ZP Switch Z-Series, 16x 100/1000/2.5G PoH ports, 32x 10/100/1000 PoE+ ports, 8x 10G SFP+, L3 features (OSPF, VRRP, PIM, PBR). 2 RPS20-E Power Supplies, 2 Fan trays. TAA		



ICX 7250

ICX 7250 (ACCESS/EDGE SWITCH)

SKU/Part Number	Description	E-Rate Eligibility %	E-Rate Category
ICX7250-24 ICX7250-24-2X10G	24-port 1 GbE switch bundle with 2x1GbE/10GbE + 6x1GbE SFP+ (upgradeable to 10GbE) uplink/stacking ports upgrade	100%	Cat 2 (IC, MIBS)
ICX7250-24G	24-port 1 GbE switch with 4x1GbE SFP uplink ports		
ICX7250-24P	24-port 1 GbE switch PoE+ 370W with 8x1GbE SFP+ (upgradeable to 10GbE) uplink ports		
ICX7250-24P-2X10G	24-port 1 GbE switch PoE+ 370W bundle with 2x1GbE/10GbE + 6x1GbE SFP+ (upgradeable to 10GbE) uplink/stacking ports upgrade		
ICX7250-48	48-port 1 GbE switch with 8x1GbE SFP+ (upgradeable to 10GbE) uplink ports		
ICX7250-48-2X10G	48-port 1 GbE switch bundle with 2x1GbE/10GbE + 6x1GbE SFP+ (upgradeable to 10GbE) uplink/stacking ports upgrade		
ICX7250-48P	48-port 1 GbE switch PoE+ 740W with 8x1GbE SFP+ (upgradeable to 10GbE) uplink ports		
ICX7250-48P-2X10G	48-port 1 GbE switch PoE+ 740W bundle with 2x1GbE/10GbE + 6x1GbE SFP+ (upgradeable to 10GbE) uplink/stacking ports upgrade		
ICX7250-PREM-LI	ICX7250 Layer 3 Premium Software License		
ICX7250-2X10G-LIC-POD	ICX7250 upgrade from 8x1GE uplink ports to 2x1/10GE + 6x1GE uplink/stacking ports. Only one 2X10G license upgrade can be applied to an ICX7250.		
ICX7250-8X10G-LIC-POD	ICX7250 upgrade from 2X1/10GE + 6X1GE uplink/stacking ports to 8X1/10GE uplink/stacking ports. This can only be applied to an ICX7250 that already has a 2X10G license applied.		

ICX Switches for E-Rate



ICX 7450

ICX 7450 (AGGREGATION/CORE SWITCH) (ACCESS/EDGE SWITCH)			
SKU/Part Number	Description	E-Rate Eligibility %	E-Rate Category
ICX7450-24	24-port 1 GbE switch, 3 modular slots for optional uplinks/stacking. Power supply, fan & modules need to be ordered separately.	100%	Cat 2 (IC, MIBS)
ICX7450-24-40G-E	24-port 1 GbE switch bundle includes 3x40G QSFP+ uplinks/stacking, 1x250W AC power supply and one fan, front to back airflow		
ICX7450-24-E	24-port 1 GbE switch bundle includes 4x10G SFP+ uplinks, 2x40G QSFP+ uplinks/stacking, 1x250W AC power supply and one fan, front to back airflow		
ICX7450-24P	24-port 1 GbE switch PoE+, 3 modular slots for optional uplinks/stacking. Power supply, fan & modules need to be ordered separately		
ICX7450-24P-40G-E	24-port 1 GbE switch PoE+ bundle includes 3x40G QSFP+ uplinks/stacking, 1x1000W AC power supply and one fan, front to back airflow		
ICX7450-24P-E2	24-port 1 GbE switch PoE+ bundle includes 4x10G SFP+ uplinks, 2x40G QSFP+ uplinks/stacking, 2x1000W AC power supply and two fans, front to back airflow		
ICX7450-24P-E-RMT3	24-port 1 GbE switch PoE+ bundle includes 4x10G SFP+ uplinks, 2x40G QSFP+ uplinks/stacking, 1x1000W AC power supply and one fan, front to back airflow, 3 years 24x7 remote support		
ICX7450-48	48-port 1 GbE switch, 3 modular slots for optional uplinks/stacking. Power supply, fan & modules need to be ordered separately		
ICX7450-48-E	48-port 1 GbE switch bundle includes 4x10G SFP+ uplinks, 2x40G QSFP+ uplinks/stacking, 1x250W AC power supply and one fan, front to back airflow		
ICX7450-48F	48-port 1 GbE SFP fiber switch, 3 modular slots for optional uplinks/stacking. Power supply, fan & modules need to be ordered separately		
ICX7450-48F-E2	48-port 1 GbE SFP fiber switch bundle includes 4x10G SFP+ uplinks, 2x40G QSFP+ uplinks/stacking, 2x250W AC power supply and two fans, front to back airflow		
ICX7450-48F-E-RMT3	48-port 1 GbE SFP fiber switch bundle includes 4x10G SFP+ uplinks, 2x40G QSFP+ uplinks/stacking, 1x250W AC power supply and one fan, front to back airflow, 3 years 24x7 remote support		
ICX7450-48P	48-port 1 GbE switch PoE+, 3 modular slots for optional uplinks/stacking. Power supply, fan & modules need to be ordered separately		
ICX7450-48P-E2	48-port 1 GbE switch PoE+ bundle includes 4x10G SFP+ uplinks, 2x40G QSFP+ uplinks/stacking, 2x1000W AC power supply and two fans, front to back airflow		
ICX7450-48P-E-RMT3	48-port 1 GbE switch PoE+ bundle includes 4x10G SFP+ uplinks, 2x40G QSFP+ uplinks/stacking, 1x1000W AC power supply and one fan, front to back airflow, 3 years 24x7 remote support		
ICX7450-48P-STK-E-RMT3	48-port 1 GbE switch PoE+ bundle includes 2x40G QSFP+ uplinks/stacking, 1x1000W AC power supply and one fan, front to back airflow, 3 years 24x7 remote support (stack member)		
ICX-MACSEC-LIC	ICX MACSEC LICENSE		
ICX7450-Prem-Lic	ICX 7450 LAYER 3 PREMIUM SOFTWARE LICENSE		

ICX Switches for E-Rate



ICX 7550

ICX 7550 (AGGREGATION/CORE SWITCH)			
SKU/Part Number	Description	E-Rate Eligibility %	E-Rate Category
ICX7550-24	ICX 7550 24-port 10/100/1000 Mbps with 2-ports 40 Gbps Uplink/Stack QSFP+, module slot, no fans, no power supplies installed. Transceivers sold separately	100%	Cat 2 (IC, MIBS)
ICX7550-24-E2	ICX 7550 24-port 10/100/1000 Mbps with 2-ports 40 Gbps Uplink/Stack QSFP+, module slot, three fans, two AC power supplies with exhaust airflow installed. Transceivers sold separately		
ICX7550-48	ICX 7550 48-port 10/100/1000 Mbps with 2-ports 40 Gbps Uplink/Stack QSFP+, module slot, no fans, no power supplies installed. Transceivers sold separately		
ICX7550-48-E2	ICX 7550 48-port 10/100/1000 Mbps with 2-ports 40 Gbps Uplink/Stack QSFP+, module slot, three fans, two AC power supplies with exhaust airflow installed. Transceivers sold separately		
ICX7550-24P	ICX 7550 24-port 10/100/1000 Mbps 802.3at POE+ with 2-ports 40 Gbps Uplink/Stack QSFP+, module slot, no fans, no power supplies installed. Transceivers sold separately		
ICX7550-24P-E2-R3	ICX 7550 24-port 10/100/1000 Mbps 802.3at POE+ with 2-ports 40 Gbps Uplink/Stack QSFP+, module slot, three fans, two AC power supplies with exhaust airflow installed. 3-years TAC support. Transceivers sold separately		
ICX7550-48P	ICX 7550 48-port 10/100/1000 Mbps 802.3at POE+ with 2-ports 40 Gbps Uplink/Stack QSFP+, module slot, no fans, no power supplies installed. Transceivers sold separately		
ICX7550-48P-E2-R3	ICX 7550 48-port 10/100/1000 Mbps 802.3at POE+ with 2-ports 40 Gbps Uplink/Stack QSFP+, module slot, three fans, two AC power supplies with exhaust airflow installed. 3-years TAC support. Transceivers sold separately		
ICX7550-24ZP	ICX 7550 12-port 10/100/1000/2500 Mbps 802.3bt POE, 12-port 100/1000/2500/50000/10000 Mbps 802.3bt POE with 2-ports 40/100 Gbps Uplink/Stack QSFP28, module slot, no fans, no power supplies installed. Transceivers sold separately		
ICX7550-24ZP-E2	ICX 7550 12-port 10/100/1000/2500 Mbps 802.3bt POE, 12-port 100/1000/2500/50000/10000 Mbps 802.3bt POE with 2-ports 40/100 Gbps Uplink/Stack QSFP28, module slot, three fans, two AC power supplies with exhaust airflow installed. Transceivers sold separately		
ICX7550-24ZP-E2-R3	ICX 7550 12-port 10/100/1000/2500 Mbps 802.3bt POE, 12-port 100/1000/2500/50000/10000 Mbps 802.3bt POE with 2-ports 40/100 Gbps Uplink/Stack QSFP28, module slot, three fans, two AC power supplies with exhaust airflow installed. 3-years TAC support. Transceivers sold separately		
ICX7550-48ZP-E2-R3	ICX 7550 36-port 10/100/1000/2500 Mbps 802.3bt POE, 12-port 100/1000/2500/50000/10000 Mbps 802.3bt POE with 2-ports 40/100 Gbps Uplink/Stack QSFP28, module slot, three fans, two AC power supplies with exhaust airflow installed. 3-years TAC support. Transceivers sold separately		
ICX7550-24F	ICX 7550 24-port 1/10 Gbps with 2-ports 40/100 Gbps Uplink/Stack QSFP28, module slot, no fans, no power supplies installed. Transceivers sold separately		
ICX7550-24F-E2-R3	ICX 7550 24-port 1/10 Gbps with 2-ports 40/100 Gbps Uplink/Stack QSFP28, module slot, two AC power supplies, three fans exhaust airflow with exhaust airflow installed, 3-years TAC support. Transceivers sold separately		
ICX7550-48F	ICX 7550 36-port 100/1000 Mbps SFP, 12-port 1/10 Gbps SFP+ with 2-ports 40/100 Gbps Uplink/Stack QSFP28, module slot, no fans, no power supplies installed. Transceivers sold separately		

ICX Switches for E-Rate

ICX 7550 (AGGREGATION/CORE SWITCH)			
SKU/Part Number	Description	E-Rate Eligibility %	E-Rate Category
ICX7550-48F-E2-R3	ICX 7550 36-port 100/1000 Mbps SFP, 12-port 1/10 Gbps SFP+ with 2-ports 40/100 Gbps Uplink/Stack QSFP28, two AC power supplies, three fans exhaust airflow with exhaust airflow installed, 3-years TAC support. Transceivers sold separately	100%	Cat 2 (IC, MIBS)
ICX-MACSEC-LIC	ICX MACSEC LICENSE		
ICX7550-PREM-LIC	ICX 7550 LAYER 3 PREMIUM LICENSE		



ICX 7650

ICX 7650 (AGGREGATION/CORE SWITCH)			
SKU/Part Number	Description	E-Rate Eligibility %	E-Rate Category
ICX7650-48ZP-E2	48-port; 24-port 100MbE/1GbE/2.5GbE/5GbE/10GbE POH, 24-port 10MbE/100MbE/1GbE PoE+, 4xQSFP (either 2x100GbE or 4x40GbE), modular slot bundle includes 2 1000W AC power supplies and 2 fans, front to back airflow, transceivers sold separately	100%	Cat 2 (IC, MIBS)
ICX7650-48P-E2	48-port 10MbE/100MbE/1GbE PoE+, 4xQSFP (either 2x100GbE or 4x40GbE), modular slot bundle includes two 1000W AC power supplies and two fans, front to back airflow, transceivers sold separately		
ICX7650-48F-E2	48-port; 24-port 1GbE/10GbE SFP+, 24-port 100MbE/1 GbE SFP, 4xQSFP (either 2x100GbE or 4x40GbE), modular slot, bundle includes two 250W AC power supplies and two fans, front to back airflow, transceivers sold separately		
ICX7650-48ZP-E-RMT3	48-port; 24-port 100MbE/1GbE/2.5GbE/5GbE/10GbE POH, 24-port 10MbE/100MbE/1GbE PoE+, 4xQSFP (2x100GbE or 4x40Gb), modular slot, bundle includes 1 1000W AC PS and 1 fan, front to back airflow, transceivers sold separately, 3 yrs 24x7 remote support		
ICX7650-48P-E-RMT3	48-port 10MbE/100MbE/1GbE PoE+, 4xQSFP (either 2x100GbE or 4x40GbE), modular slot, bundle includes 1 1000W AC PS and 1 fan, front to back airflow, transceivers sold separately, 3 years 24x7 remote support		
ICX7650-48F-E-RMT3	48-port; 24-port 1GbE/10GbE SFP+, 24-port 100MbE/1GbE SFP, 4xQSFP (either 2x100GbE or 4x40GbE), modular slot, bundle includes 1 250W AC PS and 1 fan, front to back airflow, transceivers sold separately, 3 years 24x7 remote support		
ICX7650-48ZP	48-port; 24-port 100MbE/1GbE/2.5GbE/5GbE/10GbE POH, 24-port 10MbE/100MbE/1GbE PoE+, 4xQSFP (either 2x100GbE or 4x40GbE), modular slot, bundle includes one 1000W AC PS and one fan, front to back airflow, transceivers sold separately		
ICX7650-48P	48-port 10MbE/100MbE/1GbE PoE+, 4xQSFP (either 2x100GbE or 4x40GbE), modular slot bundle includes one 1000W AC PS and one fan, front to back airflow, transceivers sold separately		
ICX7650-48F	48-port; 24-port 1GbE/10GbE SFP+, 24-port 100MbE/1GbE SFP, 4xQSFP (either 2x100GbE or 4x40GbE), modular slot fiber switch bundle includes one 250W AC PS and one fan, front to back airflow, transceivers sold separately		
ICX-MACSEC-LIC	ICX MACSEC LICENSE		
ICX7650-PREM-LIC	ICX 7650 LAYER 3 PREMIUM SOFTWARE LICENSE		

ICX Switches for E-Rate



ICX 7750

ICX 7750 (AGGREGATION/CORE SWITCH)			
SKU/Part Number	Description	E-Rate Eligibility %	E-Rate Category
ICX7750-26Q	RUCKUS ICX 7750 with 26 40GbE QSFP+ ports, and one modular slot. BASE layer 3 software feature set. Requires ICX7750-L3-COE to use advanced L3 features. Power supplies, fans, optional interface modules and optics ordered separately, not included.	100%	Cat 2 (IC, MIBS)
ICX7750-48C	RUCKUS ICX 7750 with 48 1/10GbE RJ-45 ports, 6 10/40GbE QSFP+ ports, one modular slot. BASE layer 3 software feature set. Requires ICX7750-L3-COE to use advanced L3 features. Power supplies, fans, optional interface modules optics ordered separately.		
ICX7750-48F-RMT3	RUCKUS ICX 7750 with 48 10GbE SFP+ ports, 6 10/40GbE QSFP+ ports, one modular slot. BASE layer 3 software feature set. Requires ICX7750-L3-COE to use advanced L3 features. Power supplies, fans, interface modules, optics ordered separately. 3yr RMT		
ICX7750-L3-COE	ICX7750 PREMIUM LAYER3 FEATURES CERTIFICATE OF ENTITLEMENT		



ICX 7850

ICX 7850 (AGGREGATION/CORE SWITCH)			
SKU/Part Number	Description	E-Rate Eligibility %	E-Rate Category
ICX7850-32Q-E2	ICX 7850 32-port QSFP28 supports native 40GE or 100GE, or breakout 4x10GE or 4x25GE, bundle includes two AC PS and six fans, PS side exhaust airflow, transceivers sold separately.	100%	Cat 2 (IC, MIBS)
ICX7850-48F-E2	ICX 7850 48-port SFP28 1/10/25GE, 8x-port QSFP28 supports native 40GE or 100GE or breakout 4x10GE or 4x25GE, bundle includes two AC PS and five fans, PS side exhaust airflow, transceivers sold separately.		
ICX7850-48FS-E2-RMT3	ICX 7850 48-port SFP+ 1/10GE, 8x-port QSFP28 supports native 40GE or 100GE or breakout 4x10GE or 4x25GE, bundle includes two AC PS and five fans, PS side exhaust airflow, transceivers sold separately, with 3-year remote support.		
ICX7850-32Q	ICX 7850 32-port QSFP28 supports native 40GE or 100GE, or breakout 4x10GE or 4x25GE, bundle includes two AC PS and six fans, PS side exhaust airflow, transceivers sold separately.		
ICX7850-48F	ICX 7850 48-port SFP28 1/10/25GE, 8x-port QSFP28 supports native 40GE or 100GE or breakout 4x10GE or 4x25GE, bundle includes two AC PS and five fans, PS side exhaust airflow, transceivers sold separately.		
ICX7850-48FS	ICX 7850 48-port SFP+ 1/10GE, 8x-port QSFP28 supports native 40GE or 100GE or breakout 4x10GE or 4x25GE, bundle includes two AC PS and five fans, PS side exhaust airflow, transceivers sold separately.		
ICX-MACSEC-LIC	ICX MACSEC LICENSE		
ICX7850-PREM-LIC	ICX7850 Premium feature license		



ACCESSORIES (OPTICS, CABLES, CONNECTORS, AND POWER CORDS)

SKU/Part Number	Description	E-Rate Eligibility %	E-Rate Category
E1MG-100FX-IR-OM	100BASE-FX IR SFP optic for SMF with LC connector, optical monitoring capable. For distances, up to 15Km	100%	Cat 2 (IC, MIBS)
E1MG-100FX-OM	100BASE-FX SFP optic MMF, LC connector, optical monitoring capable		
E1MG-100FX-OM-8	100BASE-FX SFP optic MMF 8 pack, LC connector, optical monitoring capable, 8-pack		
E1MG-BXD	1000BASE-BXD SFP optic SMF, transmits at 1490nm and receives at 1310nm, LC connector, single strand SMF fiber. This optic should only be connected to an E1MG-BXU at the far end.		
E1MG-BXU	1000BASE-BXU SFP optic SMF, transmits at 1310nm and receives at 1490nm, LC connector, single strand SMF fiber. This optic should only be connected to an E1MG-BXD at the far end		
E1MG-LHA-OM	1000BASE-LHA SFP optic, SMF, LC connector, optical monitoring capable		
E1MG-LHA-OM-T	1000BASE-LHA SFP optic, SMF, LC connector, optical monitoring capable, industrial temperature (-40°C to 85°C)		
E1MG-LX-OM	1000Base-LX SFP optic, SMF, LC connector, Optical Monitoring Capable		
E1MG-LX-OM-8	1000BASE-LX SFP optic, SMF, LC connector, optical monitoring capable, 8-pack		
E1MG-LX-OM-T	1000Base-LX SFP optic, SMF, LC connector, Optical Monitoring Capable, Industrial Temperature		
E1MG-SX-OM	1000Base-SX SFP optic, MMF, LC connector, Optical Monitoring Capable		
E1MG-SX-OM-8	1000BASE-SX SFP optic MMF, LC connector, optical monitoring capable, 8-pack		
E1MG-SX-OM-T	1000Base-SX SFP optic, MMF, LC connector, Optical Monitoring Capable, Industrial Temperature		
E1MG-TX	1000BASE-TX SFP Copper, RJ-45 Connector		
E1MG-LX-A	1000BASE-LX SFP Optic, SMF, LC connector, Optical Monitoring Capable, TAA compliant		
E1MG-LX-A8	1000BASE-LX SFP Optic, SMF, LC connector, Optical Monitoring Capable, TAA compliant, 8-pack		
E1MG-100FX-A	100BASE-FX SFP optic MMF, LC connector, optical monitoring capable, TAA compliant		
E1MG-100FX-A8	100BASE-FX SFP optic MMF, LC connector, optical monitoring capable, TAA compliant, 8-pack		
E1MG-SX-A	1000BASE-SX SFP Optic, MMF, (LC), Optical Monitoring Capable, TAA compliant		
E1MG-SX-A8	1000BASE-SX SFP Optic, MMF, (LC), Optical Monitoring Capable, TAA compliant, 8-pack		
E1MG-TX-A	1000BASE-TX SFP Copper, RJ-45, TAA compliant		
E1MG-TX-A8	1000BASE-TX SFP Copper, RJ-45, TAA compliant, 8-pack		
PC15USA	Power Cord, USA 125V 20A		
PCUSA	Power Cord EPS, USA, 250V 13A		
PCUSA-3M	Power Cord, USA version, NEMA 5-15P Plug (15amp), 3m		
PCUSA-C19C20	Power Cord for IEC 60320-C19 to IEC 60320-C20, 250V, 20A		
PCUSA-C19L620P	Power Cord for IEC 60320-C19 to locking Nema L6-20P, 250V, 20A		
PCUSA-C15	Power Cord High Temperature C15, USA, 125V 13A, 1.83m		

Accessories for E-Rate



ACCESSORIES (OPTICS, CABLES, CONNECTORS)

SKU/Part Number	Description	E-Rate Eligibility %	E-Rate Category
E100G-QSFP-ESR4	100GBASE-ESR4 QSFP+ optic (MTP 1x8 or 1x12), 300m over MMF, 1-pack	100%	Cat 2 (IC, MIBS)
E100G-QSFP-QSFP-AOC-1001	100GbE QSFP28 to QSFP28 Direct Attached, Active Optical Cable, 10m		
E100G-QSFP28-CWDM4-2KM	100GBASE-CWDM4 QSFP28 optic (LC), for distances up to 2 km over SMF		
E100G-QSFP28-LR4-10KM	100GBASE-LR4 QSFP28 optic (LC), for distances up to 10 km over SMF		
E100G-QSFP28-LR4-LP-10KM	100GBASE-LR4 Low Power, QSFP28 optic (LC), for distances up to 10 km over SMF		
E100G-QSFP28-LR4L-2KM	100 GbE QSFP28 optic (LC), LR4-Lite, for distances up to 2 km over SMF		
E100G-QSFP28-SR4	100GBASE-SR4 QSFP28 optic (MTP 1x12), for up to 100 m over MMF		
E40G-QSFP-ER4	40GBASE-ER4 QSFP+ optic (LC), for up to 40km over SMF		
E40G-QSFP-ESR4-8	40GBASE-ESR4 QSFP+ optic (MTP 1x8 or 1x12), 300m over MMF, 8-pack		
E40G-QSFP-LM4	40GBASE-LM4 QSFP+, 1310nm, 160m over duplex LC OM4 MMF		
E40G-QSFP-LR4	40GBASE-LR4 QSFP+ optic (LC), for up to 10km over SMF, 1-pack		
E40G-QSFP-LR4-8	40GBASE-LR4 QSFP+ optic (LC), for up to 10km over SMF 8-PACK		
E40G-QSFP-LR4-INT	40GBASE-LR4 QSFP+ to 4 SFP+ optic (LC), for up to 10 km over SMF		
E40G-QSFP-QSFP-AOC-1001	40GE Direct Attach QSFP+ to QSFP+ Active Optical Cable, 10m, 1-pack		
E40G-QSFP-SR4	40GBASE-SR4 QSFP+ optic (MTP 1x8 or 1x12), 100m over MMF, 1-pack		
E40G-QSFP-SR4-8	40GBASE-SR4 QSFP+ optic (MTP 1x8 or 1x12), 100m over MMF, 8-pack		
10G-SFPP-ER	10GBASE-ER SFP+ optic (LC), for up to 40km over SMF		
10G-SFPP-ER-2	10GBASE-ER SFP+ optic (LC), for up to 40km over SMF 2-pack		
10G-SFPP-LR-8	10GBASE-LR, SFPP SMF (LC), for up to 10km over SMF, 8-pack		
10G-SFPP-LRM-8	10GBASE-LRM SFP+ optic (LC), for up to 220m over MMF, 8-pack		
10G-SFPP-TWX-0308	10GbE Direct Attach SFP+ to SFP+ Active copper cable, 3 m, 8-pack		
10G-SFPP-TWX-0508	10GbE Direct Attach SFP+ to SFP+ Active copper cable, 5 m, 8-pack		
10G-SFPP-ZR	10GBASE-ZR SFP+ optic (LC), for up to 80km over SMF		
10G-SFPP-ZR-2	10GBASE-ZR SFP+ Optic (LC), for up to 80km over SMF, 2-pack		
10G-SFPP-TWX-P-0308	10GbE Direct Attach SFP+ to SFP+ Passive copper cable, 3 m, 8-pack		
10G-SFPP-TWX-P-0508	10GbE Direct Attach SFP+ to SFP+ Passive copper cable, 5 m, 8-pack		
10G-SFPP-SR-SA8	10GBASE-SR, SFP+ optic (LC), target range 300m over MMF, standard temperature (0°C to 70°C),TAA compliant, 8 pack		
10G-SFPP-SR-S8	10GBASE-SR,SFPP MMF LC CONNECTOR 8-PACK (No TAA)		
10G-SFPP-LR-SA	10GBASE-LR, SFP+ optic (LC), for up to 10km over SMF, standard temperature (0°C to 70°C), TAA compliant		
10G-SFPP-LR-SA8	10GBASE-LR, SFP+ optic (LC), for up to 10km over SMF, -standard temperature (0°C to 70°C), TAA compliant, - 8 pack		
10G-SFPP-LR-S8	10GBASE-LR,SFPP SMF LC CONNECTOR 8-PACK (No TAA)		

Software, Licenses, and Services for E-Rate



SmartZone 100 & 144

SMARTZONE				
SKU/Part Number	Description	E-Rate Eligibility %	E-Rate Category	
P01-S104-XX00	SmartZone 100 with 4 GigE ports, 90-day temporary Access to licenses.	100%	Cat 2 (IC, MIBS)	
P01-S124-XX00	SmartZone 100 with 2x10GigE and 4 GigE ports, 90-day temporary Access to licenses.			
L09-0001-SG00	AP management license for SZ-100/vSZ 3.X/SCG200/SZ300, 1 RUCKUS AP Access point. Order this when you intend to run software version from 3.2 onwards.			
PE1-S104-US01	E-Rate SmartZone 100 with 4 GigE ports and 1 year E-Rate Warranty. E-Rate SZ100 4x1GigE 1 yr wrnty			
PE1-S124-US01	E-Rate SmartZone 100 with 2x10GE ports and 4x1GE ports, 1 Y E-Rate Warranty E-Rate SZ100 2x10GE, 4x1GE 1 yr wrnty			
PE1-S104-US03	E-Rate SmartZone 100 with 4 GigE ports and 3 years E-Rate Warranty. E-Rate SZ100 4x1GigE 3 yr wrnty			
PE1-S124-US03	E-Rate SmartZone 100 with 2x10GigE and 4 GigE ports with 3 years E-Rate Warranty. E-Rate SZ100 2x10GE, 4x1GE 3 yr wrnty			
PE1-S144-US01	E-Rate SmartZone 144 - (4x) 1GbE & (4x) 10GbE ports, 1 Yr E-Rate Warranty			100%
PE1-S144-US03	E-Rate SmartZone 144 - (4x) 1GbE & (4x) 10GbE ports, 3 Yr E-Rate Warranty			33%
PE1-S144-US05	E-Rate SmartZone 144 - (4x) 1GbE & (4x) 10GbE ports, 5 Yr E-Rate Warranty	20%		



VIRTUAL SMARTZONE			
SKU/Part Number	Description	E-Rate Eligibility %	E-Rate Category
LE9-0001-SG00	E-Rate AP management license for SZ-100/vSZ 3.X, 1 RUCKUS AP access point with 1 year E-Rate Warranty.	100%	Cat 2 (IC, MIBS)
LE9-0001-SG03	E-Rate AP management license for SZ-100/vSZ 3.X, 1 RUCKUS AP access point with 3 year E-Rate Warranty.		
LE9-0001-SG05	E-Rate AP management license for SZ-100/vSZ 3.X, 1 RUCKUS AP access point with 5 years E-Rate Warranty.		
L09-VRND-WW00	Virtual Ruckus Network Director, 1 Instance (no device management licenses included)		
L09-0001-SGHA	AP management license for High Availability. Supported products (Standby mode only): SZ-300, vSZ-H. 1x Ruckus AP on Standby Cluster only		
L09-0001-ND00	Ruckus Device management license for virtual RND, 1 Ruckus Network Device		
LE9-VSCG-WW01	E-Rate Virtual SmartZone 3.0 or newer software virtual appliance, 1 Instance, includes 1 AP license with 1 year E-Rate Warranty.		
LE9-VSCG-WW03	E-Rate Virtual SmartZone 3.0 or newer software virtual appliance, 1 Instance, includes 1 AP license with 5 year E-Rate Warranty.		
LE9-VSCG-WW05	E-Rate Virtual SmartZone 3.0 or newer software virtual appliance, 1 Instance, includes 1 AP license with 5 year E-Rate Warranty.		
S01-URL1-1LSZ	SmartZone URL Filtering 1 year subscription for 1 AP		
S01-URL1-3LSZ	SmartZone URL Filtering 3 year subscription for 1 AP		
S01-URL1-5LSZ	SmartZone URL Filtering 5 year subscription for 1 AP		

Software, Licenses, and Services for E-Rate



SmartZone Data Plane

SMARTZONE DATA PLANE AND VIRTUAL DATA PLANE

SKU/Part Number	Description	E-Rate Eligibility %	E-Rate Category
S01-D144-1000	WatchDog End User Support Smart Zone 144 Data Plane, 1Yr	100%	Cat 2 (BMIC)
S01-D144-3000	WatchDog End User Support Smart Zone 144 Data Plane, 3Yr	33%	Cat 2 (BMIC)
S01-D144-5000	WatchDog End User Support Smart Zone 144 Data Plane, 5Yr	20%	Cat 2 (BMIC)
PE1-S144-US01	E-Rate SmartZone 144 1 Yr E-Rate Warranty E-Rate SZ144 1 Yr wrnty	100%	Cat 2 (IC, MIBS)
PE1-S144-US03	E-Rate SmartZone 144 3 Yr E-Rate Warranty E-Rate SZ144 3 Yr wrnty		
PE1-S144-US05	E-Rate SmartZone 144 5 Yr E-Rate Warranty E-Rate SZ144 5 Yr wrnty		
S01-S144-1000	End User WatchDog Support for SmartZone 144 Controller Appliance, 1 Year	100%	Cat 2 (BMIC)
S01-S144-3000	End User WatchDog Support for SmartZone 144 Controller Appliance, 3 Year	33%	Cat 2 (BMIC)
S01-S144-5000	End User WatchDog Support for SmartZone 144 Controller Appliance, 5 Year	20%	Cat 2 (BMIC)
S01-D144-1000	WatchDog End User Support Smart Zone 144 Data Plane, 1Yr	100%	Cat 2 (BMIC)
S01-D144-3000	WatchDog End User Support Smart Zone 144 Data Plane, 3Yr	33%	Cat 2 (BMIC)
S01-D144-5000	WatchDog End User Support Smart Zone 144 Data Plane, 5Yr	20%	Cat 2 (BMIC)
L09-vSZD-WW00	Virtual Data Plane 3.2 or newer software virtual appliance, 1 instance (includes throughput upto 1 Gbps)	100%	Cat 2 (BMIC)
L09-vSZD-BW10	Virtual Data Plane Bandwidth Upgrade - 1 instance ADD ON (throughput upto 10 Gbps)		
L09-vSZD-BWUL	Virtual Data Plane Bandwidth Upgrade - 1 instance ADD ON (No throughput cap)		
L09-vSZD-SVCM	Virtual Data Plane – Services (CALEA Mirroring) – 1 instance ADD ON		
L09-vSZD-SVL3	Virtual Data Plane – Services (L3 Roaming) – ADD ON – Needs minimum 2 vDP/DP instances		
L09-vSZD-SNAT	Virtual Data Plane – Services (NAT) – 100K Sessions - 1 instance ADD ON		
L09-vSZD-SDHP	Virtual Data Plane – Services (DHCP Server) – 1K IP Leases - 1 instance ADD ON		

Software, Licenses, and Services for E-Rate



ZoneDirector 1200

ZONEDIRECTOR			
SKU/Part Number	Description	E-Rate Eligibility %	E-Rate Category
9E1-1205-US01	E-Rate ZoneDirector 1200, licensed for up to 5 Access Points with 1 year E-Rate Warranty. ZD1200 can be upgraded to support up to 145 APs with AP license upgrades E-Rate ZD1205, mngs 5 APs 1yr wrnty	100%	Cat 2 (BMIC)
9E1-1205-US03	E-Rate ZoneDirector 1200, licensed for up to 5 Access Points with 3 years E-Rate Warranty. ZD1200 can be upgraded to support up to 145 APs with AP license upgrades E-Rate ZD1205, manags 5 APs 3yr wrnty		
9E1-1205-US05	E-Rate ZoneDirector 1200, licensed for up to 5 Access Points with 5 years E-Rate Warranty. ZD1200 can be upgraded to support up to 145 APs with AP license upgrades E-Rate ZD1205, manags 5 APs 5yr wrnty		
9E9-0001-ZD12	E-Rate ZoneDirector 1200 Single AP License Upgrade SKU with 1 year E-Rate Warranty. Max orderable upgrade license quantity is 145.		
9E9-3001-ZD12	E-Rate ZoneDirector 1200 Single AP License Upgrade SKU with 3 years E-Rate Warranty. Max orderable upgrade license quantity is 145.		
9E9-5001-ZD12	E-Rate ZoneDirector 1200 Single AP License Upgrade SKU with 5 years E-Rate Warranty. Max orderable upgrade license quantity is 145.		



RUCKUS Cloud

RUCKUS CLOUD			
SKU/Part Number	Description	E-Rate Eligibility %	E-Rate Category
CLD-RKWF-1001	RUCKUS Cloud Wi-Fi 1 year subscription for 1 AP, US or EU hosted	100%	Cat 2 (IC, MIBS)
CLD-RKWF-3001	RUCKUS Cloud Wi-Fi 3 year subscription for 1 AP, US or EU hosted		
CLD-RKWF-5001	RUCKUS Cloud Wi-Fi 5 year subscription for 1 AP, US or EU hosted		
CLD-RWED-5001	RUCKUS Cloud Wi-Fi 5 year subscription for 1 AP, US or EU hosted, SLED pricing	100%	Cat 2 (IC, MIBS)
CLR-RKWF-1001	RUCKUS Cloud Wi-Fi 1 year subscription renewal for 1 AP		
CLR-RKWF-3001	RUCKUS Cloud Wi-Fi 3 year subscription renewal for 1 AP		
CLR-RKWF-5001	RUCKUS Cloud Wi-Fi 5 year subscription renewal for 1 AP	100%	Cat 2 (IC, MIBS)
CLR-RWED-5001	RUCKUS Cloud Wi-Fi 5 year subscription renewal for 1 AP, SLED pricing		
CLD-MW00-1001	RUCKUS Cloud Wi-Fi MSP with Partner watchdog support, 1 AP, 1 Yr		
CLD-MW00-3001	RUCKUS Cloud Wi-Fi MSP with Partner watchdog support, 1 AP, 3 Yr	100%	Cat 2 (MIBS)
CLD-MW00-5001	RUCKUS Cloud Wi-Fi MSP with Partner watchdog support, 1 AP, 5 Yr		
CLR-MW00-1001	RUCKUS Cloud Wi-Fi MSP with Partner watchdog support renewal, 1 AP, 1 Yr		
CLR-MW00-3001	RUCKUS Cloud Wi-Fi MSP with Partner watchdog support renewal, 1 AP, 3 Yr		
CLR-MW00-50	RUCKUS Cloud Wi-Fi MSP with Partner watchdog support renewal, 1 AP, 5 Yr		

Software, Licenses, and Services for E-Rate

RUCKUS CLOUD			
SKU/Part Number	Description	E-Rate Eligibility %	E-Rate Category
CLD-S08M-1001	Ruckus CLD 1yr Subs for 1 ICX7150-C08P	100%	Cat 2 (BMIC)
CLD-S78E-5001	ClD 5yr Sub for 1 ICX7850 Switch, SLED ClD 5yr Sub for 1 ICX7850 Switch, SLED		
CLR-S71E-5001	CLD 5yr Sub renw 1 ICX7150 Switch, SLED CLD 5yr Sub renw 1 ICX7150 Switch, SLED		
CLR-S76E-5001	CLD 5yr Sub renw 1 ICX7650 Switch, SLED CLD 5yr Sub renw 1 ICX7650 Switch, SLED		
CLR-S78E-5001	CLD 5yr Sub renw 1 ICX7850 Switch, SLED CLD 5yr Sub renw 1 ICX7850 Switch, SLED		
CLD-S71E-5001	CLD 5yr Subs for 1 ICX7150 Switch, SLED CLD 5yr Subs for 1 ICX7150 Switch, SLED		
CLD-S08E-5001	CLD 5yr Subs for 1 ICX7150-C08P, SLED CLD 5yr Subs for 1 ICX7150-C08P, SLED		
CLD-S76E-5001	CLD 5yr Subs for 1 ICX7650 Switch, SLED CLD 5yr Subs for 1 ICX7650 Switch, SLED		
CLR-S08E-5001	CLD 5yr Subs renw 1 ICX7150-C08P, SLED CLD 5yr Subs renw 1 ICX7150-C08P, SLED		
CLR-S75M-1001	Ruckus CLD 1yr renw 1 ICX7550 Switch		
CLR-S71M-1001	Ruckus CLD 1yr Sub renw 1 ICX7150 Switch		
CLR-S76M-1001	Ruckus CLD 1yr Sub renw 1 ICX7650 Switch		
CLR-S78M-1001	Ruckus CLD 1yr Sub renw 1 ICX7850 Switch		
CLD-S75M-1001	Ruckus CLD 1yr Subs 1 ICX7550 Switch		
CLD-S71M-1001	Ruckus CLD 1yr Subs for 1 ICX7150 Switch		
CLD-S08M-1001	Ruckus CLD 1yr Subs for 1 ICX7150-C08P		
CLD-S76M-1001	Ruckus CLD 1yr Subs for 1 ICX7650 Switch		
CLD-S78M-1001	Ruckus CLD 1yr Subs for 1 ICX7850 Switch		
CLR-S08M-1001	Ruckus CLD 1yr Subs renw 1 ICX7150-C08P		
CLR-S75M-3001	Ruckus CLD 3yr renw 1 ICX7550 Switch		
CLR-S71M-3001	Ruckus CLD 3yr Sub renw 1 ICX7150 Switch		
CLR-S76M-3001	Ruckus CLD 3yr Sub renw 1 ICX7650 Switch		
CLR-S78M-3001	Ruckus CLD 3yr Sub renw 1 ICX7850 Switch		
CLD-S75M-3001	Ruckus CLD 3yr Subs 1 ICX7550 Switch		
CLD-S71M-3001	Ruckus CLD 3yr Subs for 1 ICX7150 Switch		
CLD-S08M-3001	Ruckus CLD 3yr Subs for 1 ICX7150-C08P		
CLD-S76M-3001	Ruckus CLD 3yr Subs for 1 ICX7650 Switch		
CLD-S78M-3001	Ruckus CLD 3yr Subs for 1 ICX7850 Switch		
CLR-S08M-3001	Ruckus CLD 3yr Subs renw 1 ICX7150-C08P		
CLR-S75E-5001	Ruckus CLD 5y renw 1 ICX7550 Switch SLED		
CLD-S75E-5001	Ruckus CLD 5y Subs 1 ICX7550 Switch SLED		
CLR-S75M-5001	Ruckus CLD 5yr renw 1 ICX7550 Switch		
CLR-S71M-5001	Ruckus CLD 5yr Sub renw 1 ICX7150 Switch		
CLR-S76M-5001	Ruckus CLD 5yr Sub renw 1 ICX7650 Switch		
CLR-S78M-5001	Ruckus CLD 5yr Sub renw 1 ICX7850 Switch		
CLD-S75M-5001	Ruckus CLD 5yr Subs 1 ICX7550 Switch		
CLD-S71M-5001	Ruckus CLD 5yr Subs for 1 ICX7150 Switch		
CLD-S08M-5001	Ruckus CLD 5yr Subs for 1 ICX7150-C08P		

Software, Licenses, and Services for E-Rate

RUCKUS CLOUD			
SKU/Part Number	Description	E-Rate Eligibility %	E-Rate Category
CLD-S76M-5001	Ruckus CLD 5yr Subs for 1 ICX7650 Switch	100%	Cat 2 (BMIC)
CLD-S78M-5001	Ruckus CLD 5yr Subs for 1 ICX7850 Switch		
CLR-S08M-5001	Ruckus CLD 5yr Subs renw 1 ICX7150-C08P		
CLD-RWED-7001	RUCKUS Cloud Wi-Fi 7 year subscription for 1 AP		
CLD-S71E-5001	RUCKUS Cloud 5-yr subscription for 1 ICX7150 switch, SLED		
CLD-S75E-5001	RUCKUS Cloud 5-yr subscription for 1 ICX7550 switch, SLED		
CLD-S76E-5001	RUCKUS Cloud 5-yr subscription for 1 ICX7650 switch, SLED		
CLD-S78E-5001	RUCKUS Cloud 5-yr subscription for 1 ICX7850 switch, SLED		

RUCKUS CLOUD BUNDLE			
SKU/Part Number	Description	E-Rate Eligibility %	E-Rate Category
CLD-BNDL-SZWA-EDU3	E-RATE SZ AP Mgmt License for SZ144/vSZ, includes Support for AP 3yr, includes RUCKUS Analytics Subscription 3 yr.	100%	Cat 2 (MIBS)
CLD-BNDL-SZWA-EDU5	E-RATE SZ AP Mgmt License for SZ144/vSZ, includes Support for AP 3yr, includes RUCKUS Analytics Subscription 5 yr.		
CLD-BNDL-SZWA-EDU5	E-RATE SZ AP Mgmt License for SZ144/vSZ, includes AP 5yr Warranty, includes RUCKUS Analytics 5yr		
CLD-BNDL-RCAW-EDU5	CLD-BNDL-RCAW-EDU5 E-RATE RUCKUS Cloud with RUCKUS Analytics Subscriptions for 1 x AP 5yr. Includes Warranty Support.		



RUCKUS ANALYTICS

SKU/Part Number	Description	E-Rate Eligibility %	E-Rate Category
CLD-ANAP-1001	RUCKUS Analytics 1 year subscription for 1 Cloud or SZ managed AP or ICX switch	100%	Cat 2 (MIBS)
CLD-ANAP-3001	RUCKUS Analytics 3 year subscription for 1 Cloud or SZ managed AP or ICX switch		
CLD-ANAP-5001	RUCKUS Analytics 5 year subscription for 1 Cloud or SZ managed AP or ICX switch		

WATCHDOG REMOTE SUPPORT FOR ICX

SKU/Part Number	Description	E-Rate Eligibility %	E-Rate Category
ICX7150-SVL-RMT-1	WatchDog REMOTE SUPPORT, ICX7150-24, 24P ,48, 48P, 48PF, C12P, C10ZP & -24F	100%	Cat 2 (BMIC/ MIBS)
ICX7150-SVL-RMT-3	WatchDog REMOTE SUPPORT, ICX7150-24, 24P ,48, 48P, 48PF, C12P, C10ZP & -24F	33%	Cat 2 (BMIC/ MIBS)
ICX7150-SVL-RMT-5	WatchDog REMOTE SUPPORT, ICX7150-24, 24P ,48, 48P, 48PF, C12P, C10ZP & -24F	20%	Cat 2 (BMIC/ MIBS)
ICX7150-C08P-SVL-RMT-1	Watchdog Remote Support, ICX7150-C08P SKUs Only; 1Yr duration	100%	Cat 2 (BMIC/ MIBS)
ICX7150-C08P-SVL-RMT-3	Watchdog Remote Support, ICX7150-C08P SKUs Only; 3Yr duration	33%	Cat 2 (BMIC/ MIBS)
ICX7150-C08P-SVL-RMT-5	Watchdog Remote Support, ICX7150-C08P SKUs Only; 5Yr duration	20%	Cat 2 (BMIC/ MIBS)
ICX7150-48ZP-SVL-RMT-1	WatchDog REMOTE SUPPORT, ICX 7150-48ZP SKUs only	100%	Cat 2 (BMIC/ MIBS)
ICX7150-48ZP-SVL-RMT-3	WatchDog REMOTE SUPPORT, ICX 7150-48ZP SKUs only	33%	Cat 2 (BMIC/ MIBS)
ICX7150-48ZP-SVL-RMT-5	WatchDog REMOTE SUPPORT, ICX 7150-48ZP SKUs only	20%	Cat 2 (BMIC/ MIBS)
ICX7650-SVL-RMT-1	WatchDog REMOTE SUPPORT, ICX 7650	100%	Cat 2 (BMIC/ MIBS)
ICX7650-SVL-RMT-3	WatchDog REMOTE SUPPORT, ICX 7650	33%	Cat 2 (BMIC/ MIBS)
ICX7650-SVL-RMT-5	WatchDog REMOTE SUPPORT, ICX 7650	20%	Cat 2 (BMIC/ MIBS)
ICX7850-SVL-RMT-1	WatchDog REMOTE SUPPORT, ICX 7850, 1 YR	100%	Cat 2 (BMIC/ MIBS)
ICX7850-SVL-RMT-3	WatchDog REMOTE SUPPORT, ICX 7850, 3 YR	33%	Cat 2 (BMIC/ MIBS)
ICX7850-SVL-RMT-5	WatchDog REMOTE SUPPORT, ICX 7850, 5 YR	20%	Cat 2 (BMIC/ MIBS)

Software, Licenses, and Services for E-Rate

WATCHDOG REMOTE SUPPORT FOR ICX

SKU/Part Number	Description	E-Rate Eligibility %	E-Rate Category
ICX7450-SVL-RRMT-1	WatchDog REMOTE SUPPORT REN, ICX 7450 24p & 48p configurations	100%	Cat 2 (BMIC/ MIBS)
ICX7450-SVL-RRMT-3	WatchDog REMOTE SUPPORT REN, ICX 7450 24p & 48p configurations	33%	Cat 2 (BMIC/ MIBS)
ICX7450-SVL-RRMT-5	WatchDog REMOTE SUPPORT REN, ICX 7450 24p & 48p configurations	20%	Cat 2 (BMIC/ MIBS)
ICX7550-S-RMT-1	Watchdog Remote Support, ICX7550-24,-48; -24P; -48P SKUs Only; 1 Yr duration	100%	Cat 2 (BMIC/ MIBS)
ICX7550-S-RMT-3	Watchdog Remote Support, ICX7550-24,-48; -24P; -48P SKUs Only; 3 Yr duration	33%	Cat 2 (BMIC/ MIBS)
ICX7550-S-RMT-5	Watchdog Remote Support, ICX7550-24,-48; -24P; -48P SKUs Only; 5 Yr duration	20%	Cat 2 (BMIC/ MIBS)
ICX7750-SVL-RRMT-1	WatchDog REMOTE SUPPORT REN, ICX 7750 48F, 48C, & 26Q 1Yr	100%	Cat 2 (BMIC/ MIBS)
ICX7750-SVL-RRMT-3	WatchDog REMOTE SUPPORT REN, ICX 7750 48F, 48C, & 26Q 1Yr	33%	Cat 2 (BMIC/ MIBS)
ICX7750-SVL-RRMT-5	WatchDog REMOTE SUPPORT REN, ICX 7750 48F, 48C, & 26Q 1Yr	20%	Cat 2 (BMIC/ MIBS)

WATCHDOG SUPPORT FOR UNLEASHED ACCESS POINTS

SKU/Part Number	Description	E-Rate Eligibility %	E-Rate Category
841-ULAP-1UER	E-Rate support for Unleashed APs, no Adv HW replacement, 1 Yr	100%	Cat 2 (BMIC)
841-ULAP-3UER	E-Rate support for Unleashed APs, no Adv HW replacement, 3 Yr	33%	
841-ULAP-5UER	E-Rate support for Unleashed APs, no Adv HW replacement, 5 Yr	20%	

EDUCATION WATCHDOG SUPPORT FOR ZONEDIRECTOR 1205

SKU/Part Number	Description	E-Rate Eligibility %	E-Rate Category
841-1205-10ER	E-Rate K-12 Education WatchDog Support for ZoneDirector 1205, 1 Year	100%	Cat 2 (BMIC)
841-1205-30ER	E-Rate K-12 Education WatchDog Support for ZoneDirector 1205, 3 Year	33%	
841-1205-50ER	E-Rate K-12 Education WatchDog Support for ZoneDirector 1205, 5 Year	20%	
841-1201-1LER	E-Rate K-12 Education WatchDog Support for ZoneDirector AP management license, 1 Year	100%	
841-1201-3LER	E-Rate K-12 Education WatchDog Support for ZoneDirector AP management license, 3 Year	33%	
841-1201-5LER	E-Rate K-12 Education WatchDog Support for ZoneDirector AP management license, 5 Year	20%	
S41-0001-1LER	E-Rate K-12 WatchDog Support for SZ/vSZ AP management license, 1 Yr	100%	
S41-0001-3LER	E-Rate K-12 WatchDog Support for SZ/vSZ AP management license, 3 Yr	33%	
S41-0001-5LER	E-Rate K-12 WatchDog Support for SZ/vSZ AP management license, 5 Yr	20%	



APPENDIX

SYSTIMAX ULL for E-Rate Preterminated Trunk Cables

- 8-, 12- and 24-fiber MPO connector-based modules available in OM4 and OM5 Wideband multimode fiber solutions
- 8- and 12-fiber MPO connector-based modules available in singlemode fiber solutions
- Factory-terminated and tested trunk cables provide superior quality and performance for field connections
- Reliable transmit-to-receive connectivity using Method B Enhanced polarity maintenance maximizes administrative convenience
- Simplified reconfiguration for moves, adds and changes (MACs)
- Easy upgrade path to parallel transmission and associated applications, and increased value of existing infrastructure
- SYSTIMAX ULL trunks are provisioned with pins to interface with G2 ULL modules (without pins)



SYSTIMAX ULL MPO-8 trunk cables

1 U	2 G	3 V	4 Q	5 X	6 Q	7 X	8 Q	9 H	10 -	11 N	12 A	13 M	14-16 010	
Construction type U Ultra-low loss	Family G Trunk, Plenum Trunk, LSZH/Riser J	Fiber type G Singlemode (A2) X OM4 multimode V OM5 WB multimode	Termination end A QP MPO (Non-pinned) QX MPO (Pinned)		Termination end B QX MPO (Pinned)		Construction Q 8 Fiber PmP	Fiber count 8 8-fiber R 16-fiber F 24-fiber H 48-fiber U 64-fiber L 96-fiber M 144-fiber		Color M Aqua N Lime green J Yellow		Options A No gland B With gland C With pulling eye	Unit of measure F Feet M Meter	Length 010-999 Feet 003-305 Meter
<p>· No female to female configurations.</p> <p>· OM4 standard is aqua</p> <p>· OM5 standard is lime green</p> <p>· Singlemode standard is yellow</p>														

SYSTIMAX ULL MPO-12 trunk cables

1 U	2 J	3 X	4 M	5 X	6 M	7 X	8 A	9 K	10 -	11 M	12 A	13 F	14-16 010	
Construction type U Ultra-Low Loss	Family G Trunk, Plenum Trunk, LSZH/Riser J	Fiber type G Singlemode (A2) X OM4 multimode V OM5 WB multimode	Termination end A MP MPO (Non-pinned) MX MPO (Pinned)		Termination end B MX MPO (Pinned)		Construction A 12 Fiber PmP	Fiber count D 12-fiber F 24-fiber H 48-fiber K 72-fiber L 96-fiber M 144-fiber		Color M Aqua N Lime green J Yellow		Options A No gland B With gland C With pulling eye	Unit of measure F Feet M Meter	Length 010-999 Feet 003-305 Meter
<p>· No female to female configurations.</p> <p>· OM4 standard is aqua</p> <p>· OM5 standard is lime green</p> <p>· Singlemode standard is yellow</p>														

SYSTIMAX ULL for E-Rate Preterminated Trunk & Fanout Cables

SYSTIMAX ULL MPO-24 trunk cables

1 U	2 G	3 V	4 2	5 X	6 2	7 X	8 B	9 M	10 -	11 N	12 C	13 F	14-16 010	
Construction type U Ultra-Low Loss	Family G Trunk, Plenum J Trunk, LSZH/Riser	Fiber type G Singlemode (A2) X OM4 multimode V OM5 WB multimode	Termination end A 2C MPO (Non-pinned) equipment 2P MPO (Non-pinned) 2X MPO (Pinned)		Termination end B 2X MPO (Pinned)		Construction B 24-fiber PmP	Fiber count F 24-fiber H 48-fiber K 72-fiber L 96-fiber M 144-fiber		Color M Aqua N Lime green J Yellow · OM4 standard is aqua · OM5 standard is lime green · Singlemode standard is yellow		Options B With gland eye C With pulling eye	Unit of measure F Feet M Meter	Length 010-999 Feet 003-305 Meter

SYSTIMAX ULL ruggedized fanout cables

- 8-, 12- and 24-fiber MPO connector-based modular design enables simple connections
- Ruggedized fanouts are constructed with OM4 and OM5 Wideband and singlemode fibers
- Factory terminated and tested for instant field connections giving guaranteed quality and performance
- Designed for administrative convenience—guaranteed transmit-to-receive connectivity
- No special or non-standard polarity components



1 U	2 L	3 X	4 M	5 P	6 L	7 C	8 A	9 D	10 -	11 M	12 E	13 F	14-16 010	
Construction type U Ultra-low loss	Cable family L Rugged F/O Plenum N Rugged F/O LSZH/Riser	Fiber type G Singlemode (A2) X OM4 multimode V OM5 WB multimode	Connector 1 QP 8f MPO (Non-pinned) QX 8f MPO (Pinned) MP 12f MPO (Non-pinned) MX 12f MPO (Pinned) 2P 24f MPO (Non-pinned) 2X 24f MPO (Pinned)		Connector 2 LC LC standard · Standard breakout length for Connector 1 is 33 in		Cordage size A 12-fiber PmP cable Q 8-fiber PmP Cable B 24-fiber PmP Cable *24-fiber PmP cable not available for singlemode	Fiber count D 12-fiber F 24-fiber S 32-fiber G 36-fiber H 48-fiber U 64-fiber K 72-fiber L 96-fiber		Color M Aqua N Lime green J Yellow · OM4 standard is aqua · OM5 standard is lime green · Singlemode standard is yellow		Breakout length LC End E 24 in breakout No gland F 24 in breakout with gland G 24 in breakout pulling grip S 36 in breakout no gland T 36 in breakout pulling grip U 36 in breakout with gland H 48 in breakout no gland J 48 in breakout with gland K 48 in breakout pulling grip L 72 in breakout no gland M 72 in breakout with gland N 72 in breakout pulling grip	UOM F Feet M Meter	Length minimal length based on breakout 24 in 7-999 ft 36 in 8-999 ft 48 in 9-999 ft 72 in 11-999 ft 24 in 2-305 m 36-48 in 3-305 m 72 in 4-305 m · Total length includes the breakout

SYSTEMAX ULL Array Cords for E-Rate



SYSTEMAX ULL LC array cords

- TeraSPEED singlemode 8- and 12-fiber or multimode 8- 12- and 24-fiber MPO connectors ensure fast and simple connections
- All 8-fiber MPO arrays have QSFP wiring
- Available in OM4 and OM5 Wideband multimode and singlemode fibers
- Factory-terminated and tested trunk cables provide superior quality and performance for field connections
- MPO-LC array fanouts are constructed with 1.6-millimeter reinforced zipcord furcation tubing for outstanding durability and dependability
- Array fanouts are available with multiple breakout lengths to simplify installation

1 U	2 Q	3 X	4 M	5 P	6 L	7 C	8 G	9 D	10 -	11 M	12 E	13 F	14-16 010
Construction type U Ultra-low loss	Cable family Q Plenum array R LSZH array	Fiber type G Singlemode (A2) X OM4 multimode V OM5 WB multimode	Connector 1 QP 8f MPO (female) QX 8f MPO (male) MP 12f MPO (female) MX 12f MPO (male) 2P 24f MPO (female) 2X 24f MPO (male)		Connector 2 LC LC connector		Cordage size G 12-fiber PmP Array Cord J 8-fiber PmP Array Cord H 24-fiber PmP Array Cord *24-fiber PmP cable not available for singlemode	Fiber count 8 8-fiber D 12-fiber F 24-fiber		Color M Aqua N Lime green J Yellow · OM4 standard is aqua · OM5 standard is lime green · Singlemode standard is yellow	Breakout length D 12 in breakout No gland E 24 in breakout No gland H 48 in breakout No gland L 72 in breakout No gland	UOM F Feet M Meter	Length minimal length based on breakout 12 in 3-999 ft 24 in 4-999 ft 48 in 6-999 ft 72 in 8-999 ft 12 in 1-305 m 24-48 in 2-305 m 72 in 3-305 m · Other lengths available please contact CommScope

SYSTEMAX ULL MPO array cords

- 8-, 12- and 24-fiber MPO connector-based modular design enables simple connections
- Array cords are constructed with OM4 and OM5 Wideband and singlemode fibers
- Factory-terminated and tested for instant field connections giving guaranteed quality and performance
- MPO-MPO arrays are constructed with 3.0 mm PmP array cords
- Arrays are available with multiple breakout lengths; minimum overall assembly length may vary based on breakout length selected (please see configuration table for specifics)



1 U	2 Q	3 X	4 M	5 P	6 M	7 P	8 G	9 D	10 -	11 M	12 E	13 F	14-16 010
Construction type U Ultra-low loss	Cable family Q Plenum array R LSZH array	Fiber type G Singlemode (A2) X OM4 multimode V OM5 WB multimode	Connector 1 QP 8f MPO (female) QX 8f MPO (male) MP 12f MPO (female) MX 12f MPO (male) 2P 24f MPO (female) 2X 24f MPO (male) 2C 24f MPO (female) equipment		Connector 2 QP 8f MPO (female) QX 8f MPO (male) MP 12f MPO (female) MX 12f MPO (male) 2P 24f MPO (female) 2X 24f MPO (male)		Cordage size G 12-fiber PmP Array Cord J 8-fiber PmP Array Cord H 24-fiber PmP Array Cord *24-fiber PmP cable not available for singlemode	Fiber count 8 8-fiber D 12-fiber F 24-fiber		Color M Aqua N Lime green J Yellow · OM4 standard is aqua · OM5 standard is lime green · Singlemode standard is yellow	Breakout length D 12 in breakout No gland E 24 in breakout No gland H 48 in breakout No gland L 72 in breakout No gland	UOM F Feet M Meter	Length minimal length based on breakout 12 in 3-999 ft 24 in 4-999 ft 48 in 6-999 ft 72 in 8-999 ft 12 in 1-305 m 24-48 in 2-305 m 72 in 3-305 m · Total length includes the breakout

*For use when there is more than one MPO connector on one or both ends (ie: 1x2, 1x3, 2x3)

*2P, 2X and 2C only available for multimode fiber

SYSTIMAX ULL Patch Cords for E-Rate

SYSTIMAX ULL polarity and gender changeable MPO patch cords



SYSTIMAX ULL 8 fiber-optic MTP PRO patch cords

1 U	2 Q	3 X	4 Q	5 F	6 Q	7 F	8 G	9 8	10 -	11 M	12 A	13 F	14-16 010
Construction type U Ultra-low loss	Cable family Q Plenum array R LSZH array	Fiber type X LazrSPEED 550 multimode V LazrSPEED OM5 WB multimode	Connector 1 QF 8f MTP PRO (female)		Connector 2 QF 8f MTP PRO (female)		Cordage size J 8-fiber PmP Array Cord	Fiber count 8 8-fiber	Color M Aqua N Lime green		Breakout length A No gland	UOM F Feet M Meter	Length 010-999 ft 003-305 m

SYSTIMAX ULL 12 fiber-optic MTP PRO patch cords

1 U	2 Q	3 X	4 M	5 F	6 M	7 F	8 G	9 D	10 -	11 J	12 A	13 F	14-16 010
Construction type U Ultra-low loss	Cable family Q Plenum array R LSZH array	Fiber type X LazrSPEED 550 multimode V LazrSPEED OM5 WB multimode	Connector 1 MF 12f MTP PRO (female)		Connector 2 MF 12f MTP PRO (female)		Cordage size G 12-fiber PmP Array Cord	Fiber count D 12-fiber	Color M Aqua N Lime green		Breakout length A No gland	UOM F Feet M Meter	Length 010-999 ft 003-305 m

SYSTIMAX ULL Patch Cords for E-Rate

SYSTIMAX ULL fiber-optic MPO-8 patch cords

1 U	2 Q	3 G	4 Q	5 X	6 Q	7 X	8 J	9 8	10 -	11 J	12 A	13 F	14-16 010
Construction type U Ultra-low loss	Cable family Q Plenum array R LSZH array	Fiber type G Singlemode (A2) X OM4 multimode V OM5 WB multimode	Connector 1 QP 8f MPO (female) QX 8f MPO (male)		Connector 2 QP 8f MPO (female) QX 8f MPO (male) UC Unconnected		Cordage size J 8-fiber PmP Array Cord	Fiber count 8 8-fiber	Color M Aqua N Lime green J Yellow		Breakout length A No gland	UOM F Feet M Meter	Length 010-999 ft 003-305 m

SYSTIMAX ULL fiber-optic MPO-12 patch cords

1 U	2 Q	3 G	4 M	5 X	6 M	7 X	8 G	9 D	10 -	11 J	12 A	13 F	14-16 010
Construction type U Ultra-low loss	Cable family Q Plenum array R LSZH array	Fiber type G Singlemode (A2) X OM4 multimode V OM5 WB multimode	Connector 1 MP 12f MPO (female) MX 12f MPO (male)		Connector 2 MP 12f MPO (female) MX 12f MPO (male) UC Unconnected		Cordage size G 12-fiber PmP Array Cord	Fiber count D 12-fiber	Color M Aqua N Lime green J Yellow		Breakout length A No gland	UOM F Feet M Meter	Length 010-999 ft 003-305 m

SYSTIMAX ULL fiber-optic MPO-24 patch cords

1 U	2 Q	3 V	4 2	5 X	6 2	7 X	8 H	9 F	10 -	11 N	12 A	13 F	14-16 010
Construction type U Ultra-low loss	Cable family Q Plenum array R LSZH array	Fiber type G Singlemode (A2) X OM4 multimode V OM5 WB multimode	Connector 1 2P 24f MPO (female) 2X 24f MPO (male)		Connector 2 2P 24f MPO (female) 2X 24f MPO (male) UC Unconnected		Cordage size H 24-fiber PmP Array Cord	Fiber count F 24-fiber	Color J Yellow M Aqua N Lime green		Breakout length A No gland	UOM F Feet M Meter	Length 010-999 ft 003-305 m

SYSTIMAX Uniboot ULL Patch Cords for E-Rate

SYSTIMAX Uniboot patch cords



1 U	2 D	3 X	4 L U	5 L U	6 6	7 - 8 2 - M	9 X	10 F	11-12 010	
Construction type U Ultra-low loss	Cable family D Plenum F LSZH/Riser	Fiber type G Singlemode (A2) X OM4 multimode V OM5 WB multimode	Connector 1 LU LC Uniboot	Connector 2 LU LC Uniboot	Cordage size K 1.5 mm 6 2.0 mm	Fiber count 2 2-fiber	Color M Aqua N Lime green J Yellow	Breakout length X No breakout	UOM F Feet M Meter	Length 2-200 Feet 1-061 Meters
							<ul style="list-style-type: none"> OM4 standard is aqua OM5 standard is lime green Singlemode standard is yellow 			<ul style="list-style-type: none"> Other lengths available please contact CommScope

SYSTIMAX ULL fiber-optic LC patch cords



1 U	2 D	3 X	4 L	5 C	6 L	7 C	8 4	9 2	10 -	11 M	12 X	13 F	14-16 010
Construction type U Ultra-low loss	Cable family D Plenum F LSZH/Riser	Fiber type G Singlemode (A2) X OM4 multimode V OM5 WB multimode	Connector 1 LC Standard	Connector 2 LC LC Standard UC Unconnectorized	Cordage size 2 1.6mm simplex 4 1.6mm zipcord		Fiber count 1 1-fiber 2 2-fiber	Color M Aqua N Lime green J Yellow	Breakout length X No breakout	UOM F Feet M Meter	Length 2-200 Feet 1-061 Meters		
								<ul style="list-style-type: none"> OM4 standard is aqua OM5 standard is lime green Singlemode standard is yellow 				<ul style="list-style-type: none"> Other lengths available please contact CommScope 	

SYSTIMAX InstaPatch 360 Trunk Cables for E-Rate

SYSTIMAX InstaPATCH 360 preterminated trunk cables

- Available in OM3, OM4 or OM5 solutions
- 12-fiber MPO connector-based modular design enables simple connections
- Factory terminated and tested trunk cables for instant field connections and guaranteed quality and performance
- Designed for administrative convenience—guaranteed transmit-to-receive connectivity
- Supports easy reconfiguration for moves, adds and changes
- Easy upgrade path to parallel transmission and associated applications, while preserving the initial investment



InstaPATCH 360 preterminated trunk cables configurator

1 F	2 G	3 X	4 M	5 P	6 M	7 P	8 A	9 D	10 -	11 M	12 B	13 F	14 - 16 010
Prefix FG Trunk-Plenum FH Trunk-Plenum Armored FJ Trunk-LSZH FK Trunk-LSZH Armored	Fiber Type X OM4 multimode Z OM3 multimode V OM5	Connector 1 MP MPO (Female No Pins)	Connector 2 MP MPO (Female No Pins) MX MPO (Male Pins)	Cordage Size A 12 Fiber PmP Cable	Fiber Count D 12 Fiber** F 24 Fiber G 36 Fiber H 48 Fiber K 72 Fiber L 96 Fiber M 144 Fiber	Jacket Color A Blue B Orange C Green D Brown E Slate G Red H Black J Yellow K Violet L Rose M Aqua N Lime	Breakout Length A No Gland B With Gland C Pulling Grip	UOM F Feet M Meter	Length 10-999 Feet 3-305 Meter				

• OM4 standard is Aqua
 • OM5 is Lime

SYSTIMAX InstaPatch 360 Trunk Cables for E-Rate

SYSTIMAX InstaPATCH 360 ruggedized fanout cables

- 12-fiber MPO connector-based modular design enables simple connections
- Ruggedized fanouts are constructed with OM3, OM4 or OM5 singlemode fibers
- Factory terminated and tested for instant field connections and guaranteed quality and performance
- Designed for administrative convenience—guaranteed transmit-to-receive connectivity
- No special or non-standard polarity components



SYSTIMAX InstaPATCH 360 ruggedized fanout cables

1	2	3	4	5	6	7	8	9	10	11	12	13	14 - 16
F	L	X	M	P	L	C	A	D	-	M	E	F	010
Prefix	Fiber Type	Connector 1	Connector 2	Cordage Size	Fiber Count	Jacket Color	Breakout Length	UOM	Breakout Length				
FL Rugged F/O Plenum FM Rugged F/O Plenum Armored FN Rugged F/O LSZH FP Rugged F/O LSZH Armored	X OM4 multimode Z OM3 multimode V OM5	MP MPO (Female No Pins) MX MPO (Male Pins)	LC LC Standard SC SC Standard	A 12 Fiber PnP Cable	D 12 Fiber F 24 Fiber G 36 Fiber H 48 Fiber K 72 Fiber	A Blue B Orange C Green D Brown E Slate G Red H Black J Yellow K Violet L Rose M Aqua N Lime	E 24 in Breakout No Gland F 24 in Breakout With Gland G 24 in Breakout Pulling Grip H 48 in Breakout No Gland J 48 in Breakout With Gland K 48 in Breakout Pulling Grip L 72 in Breakout No Gland M 72 in Breakout With Gland N 72 in Breakout Pulling Grip P 96 in Breakout No Gland Q 96 in Breakout With Gland R 96 in Breakout Pulling Grip S 36 in Breakout No Gland T 36 in Breakout Pulling Grip U 36 in Breakout With Gland	F Feet M Meter	24 in 7-999 ft 48 in 9-999 ft 72 in 11-999 ft 96 in 13-999 ft 24 in 2-999 m 48 in 3-999 m 72-96 in 4-999 m				

• OM4 standard is Aqua
 • OM5 is Lime

SYSTIMAX InstaPatch 360 Array Cords for E-Rate

SYSTIMAX InstaPATCH 360 array cords

- 12-fiber MPO connector-based modular design enables simple connections
- Array cords are constructed with OM3, OM4 or OM5 singlemode fibers
- Factory-terminated and tested for instant field connections and guaranteed quality and performance
- No special or non-standard polarity components
- MPO-LC/SC array fanouts are constructed with 1.6 mm reinforced zipcord furcation tubing for outstanding durability and dependability
- Array fanout assemblies are available in fanout length of 48" for cables over 10 feet; Cables 3-9 feet, 24 inch fanout; Cables 2 feet, 12 inch fanout



InstaPATCH 360 array cord configurator

1 F	2 Q	3 X	4 M	5 P	6 L	7 C	8 G	9 D	10 -	11 M	12 E	13 F	14 - 16 010	
Prefix FQ ArrayPlenum FR Array LSZH		Fiber Type X OM4 multimode Z OM3 multimode V OM5	Connector 1 MP MPO (Female No Pins) MX MPO (Male Pins)		Connector 2 LC LC Connector SC SC Standard		Cordage Size G 12 Fiber PmP Array Cord	Fiber Count D 12 Fiber	Jacket Color M Aqua N Lime		Breakout Length D 12 in Breakout No Gland E 24 in Breakout No Gland H 48 in Breakout No Gland L 72 in Breakout No Gland P 96 in Breakout No Gland		UOM F Feet M Meter	Breakout Length 12 in 2-999 ft 24 in 4-999 ft 48 in 6-999 ft 72 in 8-999 ft 96 in 10-999 ft 24 in 1-305 m 48 in 2-305 m 72 in 3-305 m 96 in 4-305 m
											•OM4 only available in Aqua •OM5 only available in Lime			

InstaPATCH 360 MPO array cord configurator

1 F	2 Q	3 X	4 M	5 P	6 L	7 C	8 G	9 D	10 -	11 M	12 E	13 F	14 - 16 010	
Prefix FQ ArrayPlenum FR Array LSZH		Fiber Type X LazrSPEED 550 Multimode	Connector 1 MP MPO (Female No Pins) MX MPO (Male Pins)		Connector 2 MP MPO (Female No Pins) MX MPO (Male Pins)		Cordage Size G 12 Fiber PmP Array Cord H 24 Fiber PmP Array Cord	Fiber Count D 12 Fiber F 24 Fiber	Jacket Color M Aqua		Breakout Length D 12 in Breakout No Gland E 24 in Breakout No Gland H 48 in Breakout No Gland L 72 in Breakout No Gland P 96 in Breakout No Gland		UOM F Feet M Meter	Breakout Length 12 in 2-999 ft 24 in 4-999 ft 48 in 6-999 ft 72 in 8-999 ft 96 in 10-999 ft 24 in 1-305 m 48 in 2-305 m 72 in 3-305 m 96 in 4-305 m
											•LazrSPEED only available in Aqua			

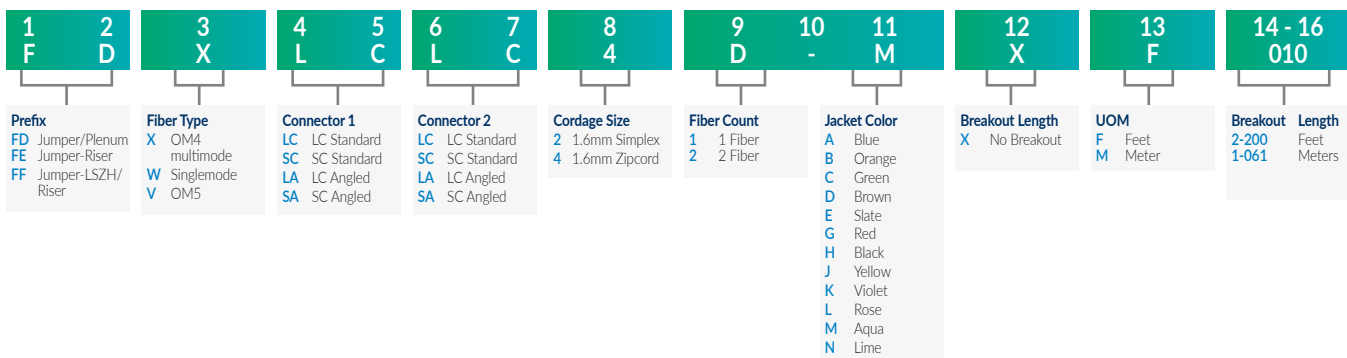
SYSTIMAX Fiber Optic Patchcords & Pigtails for E-Rate

SYSTIMAX fiber optic patch cords

- Duplex zipcord construction provides better mechanical performance with less risk of damage from crimping
- Rugged 1.6 mm or 3.0 mm cordage for durable and easily handled connections
- Outer jacket colored for easy identification



SYSTIMAX fiber optic patch cords configurator



SYSTIMAX Fiber Optic Patchcords & Pigtails for E-Rate

SYSTIMAX fiber optic pigtails



1	2	3	4	5	6	7	8	9	10	11	12	13	14-16
F	A	X	L	C	U	C	0	1	-	M	X	F	002

Prefix

1	FA	Pigtail tight buffer
2	FB	Pigtail - Riser SBJ

Fiber type

3	X	OM4 multimode
	W	Singlemode

Connector 1

4	LC	LC standard
	LA	LC angled
5	SC	SC standard
	SA	SC angled

Connector 2

6	UC	Unconnectorized
7		

Cordage size

8	0	0.9 mm (Tight buffered fiber BTW)
	1	0.9 mm (SBJ cordage)

Fiber count

9	1	1 fiber
	A	6 fiber pigtail kit BL-WH (1-6)
	B	6 fiber pigtail kit RD-AQ (7-12)
	C	12 fiber pigtail kit BL-AQ (1-12)

Jacket color

11	A	Blue
	B	Orange
	C	Green
	D	Brown
	E	Slate
	G	Red
	H	Black
	J	Yellow
	K	Violet
	L	Rose
	M	Aqua
	X	KIT pigtail

Breakout length

12	X	No breakout
----	---	-------------

Unit of measurement

13	F	Feet
	M	Meter

Length

14	1-23	Feet
-	1-7	Meters
16		

LC keyed fiber pigtails are also available as part of CommScope secure fiber solutions. For more information please contact your Customer Service Representative.

InstaPATCH® Cu for E-Rate

InstaPATCH® Cu Configurator

C 1 A 2 A 3 A 4 C - 5 1 6 1 7 H 8 A 9 8 10 8 11 F 12 050

Cable Type

1	A	Cat 6A X10D – U/UTP (Plenum)
	B	Cat 6A X10D – U/UTP (Riser)
	C	Cat 6A X10D – U/UTP (LSZH)
	D	Cat 6A X10D – F/UTP (Plenum)
	E	Cat 6A X10D – F/UTP (Riser)
	F	Cat 6A X10D – F/UTP (LSZH)
	G	Cat 6 XL – U/UTP (Plenum)
	H	Cat 6 XL – U/UTP (Riser)
	J	Cat 6 XL – U/UTP (LSZH)
	Q	Cat 6A X10D – S/FTP (LSZH)
	R	Cat 6 UTP (LZSH) Class B Rated
	S	Cat 6A UTP (LZSH) Class B Rated
	T	Cat 6A FTP (LZSH) Class B Rated

Connector A

2	A	Outlet – Single Row Standard Density
	B	Outlet – Dual Row Standard Density
	C	Outlet – Dual Row High Density
	G	RJ45 Plug – Single Row Standard Density
	H	RJ45 Plug – Dual Row Standard Density
	J	RJ45 Plug – Dual Row High Density
	N	1100 Module
	R	360 1100 Evolve Module
	S	OneLink 2x6
	T	OneLink 2x4

Connector B

3	A	Outlet – Single Row Standard Density
	B	Outlet – Dual Row Standard Density
	C	Outlet – Dual Row High Density
	G	RJ45 Plug – Single Row Standard Density
	H	RJ45 Plug – Dual Row Standard Density
	J	RJ45 Plug – Dual Row High Density
	N	1100 Module
	R	360 1100 Evolve Module
	S	OneLink 2x6
	T	OneLink 2x4
	X	Unterminated

Link

4	B	6
	C	8
	D	12
	E	16
	F	18
	G	24

Orientation A

5	1	Trident Series Flat
	2	Right Paired Flat
	3	Right Series Flat
	4	Left Paired Flat
	5	Left Series Flat
	6	Trident Paired Flat
	A	Trident Series Angled
	B	Right Paired Angled
	C	Right Series Angled
	D	Left Paired Angled
E	Left Series Angled	
F	Trident Paired Angled	

Orientation B

6	1	Trident Series Flat
	2	Right Paired Flat
	3	Right Series Flat
	4	Left Paired Flat
	5	Left Series Flat
	6	Trident Paired Flat
	A	Trident Series Angled
	B	Right Paired Angled
	C	Right Series Angled
	D	Left Paired Angled
E	Left Series Angled	
F	Trident Paired Angled	
X	Not Applicable	

Bundling

7	H	Hook-n-loop
	S	Sleeving

Labeling

8	A	Generic Label
---	---	---------------

Outlet Color

9	0	Not Applicable
	1	Black (BK)
	2	Blue (BL)
	8	White (WH)
	C	Slate (SL)

Jacket Color

10	8	White (WH)
	C	Slate (SL)
	Z	Blue (BL)

UOM

11	F	Feet
	M	Meter

Length

12	XXX
----	-----

Configurations are not limited to the above.

Please contact your local sales representative for more information.



CommScope pushes the boundaries of communications technology with game-changing ideas and ground-breaking discoveries that spark profound human achievement. We collaborate with our customers and partners to design, create and build the world's most advanced networks. It is our passion and commitment to identify the next opportunity and realize a better tomorrow. Discover more at commscope.com



commscope.com

Visit our website or contact your local CommScope representative for more information.

© 2021 CommScope, Inc. All rights reserved.

Unless otherwise noted, all trademarks identified by ® or ™ are registered trademarks, respectively, of CommScope, Inc. This document is for planning purposes only and is not intended to modify or supplement any specifications or warranties relating to CommScope products or services. CommScope is committed to the highest standards of business integrity and environmental sustainability with a number of CommScope's facilities across the globe certified in accordance with international standards, including ISO 9001, TL 9000, and ISO 14001. Further information regarding CommScope's commitment can be found at www.commscope.com/About-Us/Corporate-Responsibility-and-Sustainability.

CO-115185.1-EN (09/21)