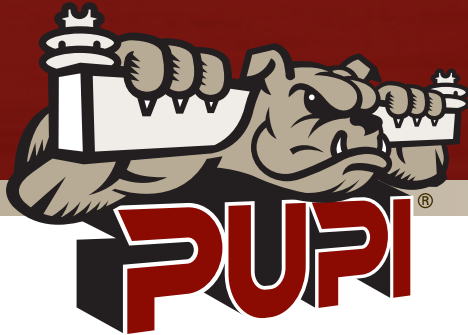


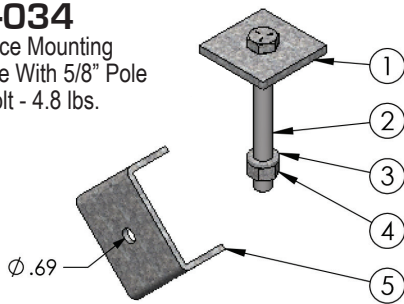
PUPI® HARDWARE CATALOG



One Tough PUPI™

BMB-034

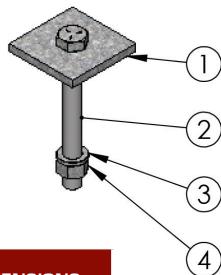
Alley Arm Brace Mounting Hardware For Use With 5/8" Pole Mounting Bolt - 4.8 lbs.



ITEM NO.	PART NUMBER	QTY	DIMENSIONS
1	SW0813-0003	1	3 1/2" x 3 1/2" x 3/8"
2	HB0750-0004	1	3/4" x 6 3/4"
3	LW0750-0001	1	3/4"
4	HN0750-0001	1	3/4"
5	BK-0006	1	—

BMB-046

Alley Arm Brace Mounting Hardware Without "U" Washer For Pole Mounting - 2.4 lbs.

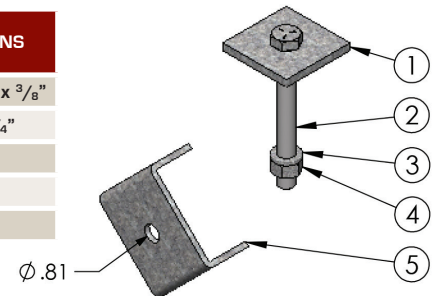


ITEM NO.	PART NUMBER	QTY	DIMENSIONS
1	SW0813-0003	1	3 1/2" x 3 1/2" x 3/8"
2	HB0750-0004	1	3/4" x 6 3/4"
3	LW0750-0001	1	3/4"
4	HN0750-0001	1	3/4"

BMB-035

Alley Arm Brace Mounting Hardware For Use With 3/4" Pole Mounting Bolt - 4.8 lbs.

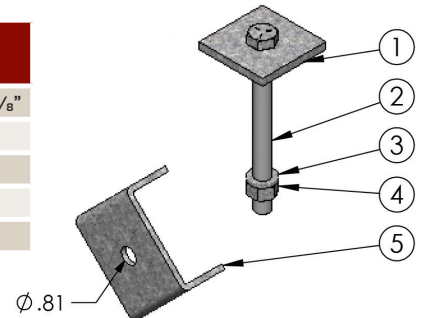
ITEM NO.	PART NUMBER	QTY	DIMENSIONS
1	SW0813-0003	1	3 1/2" x 3 1/2" x 3/8"
2	HB0750-0004	1	3/4" x 6 3/4"
3	LW0750-0001	1	3/4"
4	HN0750-0001	1	3/4"
5	BK-0012	1	—



BMB-036

Alley Arm Brace Mounting Hardware For Use With Series 4000 Arm & 3/4" Pole Mounting Bolt - 4.9 lbs.

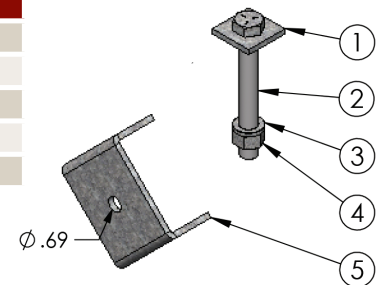
ITEM NO.	PART NUMBER	QTY	DIMENSIONS
1	SW0813-0003	1	3 1/2" x 3 1/2" x 3/8"
2	HB0750-0006	1	3/4" x 8"
3	LW0750-0001	1	3/4"
4	HN0750-0001	1	3/4"
5	BK-0012	1	—



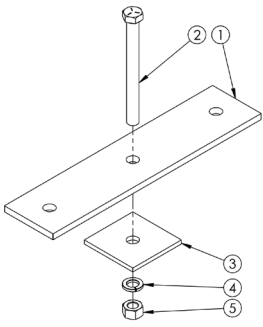
BMB-057

Alley Arm Brace Mounting Hardware For Use With Series 1000 Arm & 5/8" Pole Mounting Bolt - 3.7 lbs.

ITEM NO.	PART NUMBER	QTY	DIMENSIONS
1	SW0813-0006	1	2" x 2" x 1/4"
2	HB0750-0003	1	3/4" x 6"
3	LW0750-0001	1	3/4"
4	HN0750-0001	1	3/4"
5	BK-0006	1	—

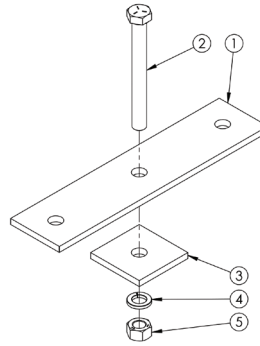


HARDWARE CATALOG



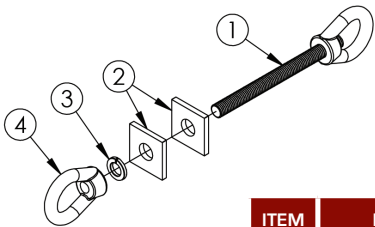
BMB-048
Double Insulator Pin Plate Kit
5/8" Bolt – 7.1 lbs.

ITEM NO.	PART NUMBER	QTY	DIMENSIONS
1	PL-0004	1	15" x 3 1/2" x 3/8"
2	HB0625-0002	1	5/8" x 6 1/2"
3	SW0688-0002	1	3 1/2" x 3 1/2" x 1/4"
4	LW0625-0004	1	5/8"
5	HN0625-0004	1	5/8"



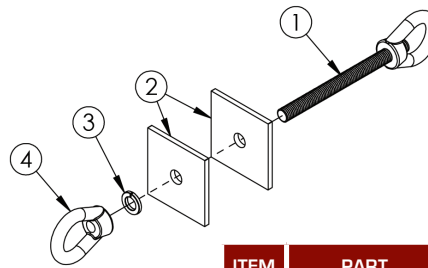
BMB-049
Double Insulator Pin Plate Kit
3/4" Bolt – 7.8 lbs.

ITEM NO.	PART NUMBER	QTY	DIMENSIONS
1	PL-0008	1	15" x 3 1/2" x 3/8"
2	HB0750-0004	1	3/4" x 6 3/4"
3	SW0813-0003	1	3 1/2" x 3 1/2" x 3/8"
4	LW0750-0001	1	3/4"
5	HN0750-0001	1	3/4"



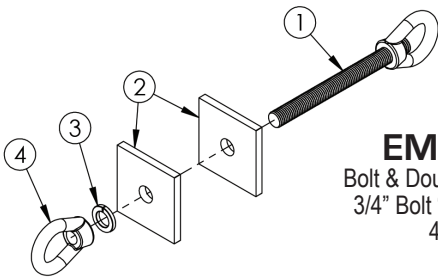
EMB-021
Bolt & Double Eye Nut Kit
Series 1000 "E" Application
2.1 lbs.

ITEM NO.	PART NUMBER	QTY	DIMENSIONS
1	GA103634	1	5/8" x 7 1/2"
2	SW0813-0006	2	2" x 2" x 1/4"
3	LW0625-0004	1	5/8"
4	EN0625-0003	1	5/8"



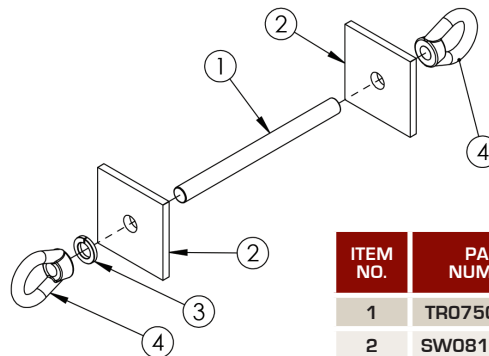
EMB-022
Bolt & Double Eye Nut Kit
5/8" Bolt "E" Application
3.3 lbs.

ITEM NO.	PART NUMBER	QTY	DIMENSIONS
1	GA103634	1	5/8" x 7 1/2"
2	SW0688-0002	2	3 1/2" x 3 1/2" x 1/4"
3	LW0625-0004	1	5/8"
4	EN0625-0003	1	5/8"



EMB-023
Bolt & Double Eye Nut Kit
3/4" Bolt "E" Application
4.6 lbs.

ITEM NO.	PART NUMBER	QTY	DIMENSIONS
1	GA103633	1	3/4" x 8"
2	SW0813-0003	2	3 1/2" x 3 1/2" x 3/8"
3	LW0750-0001	1	3/4"
4	EN0750-0002	1	3/4"

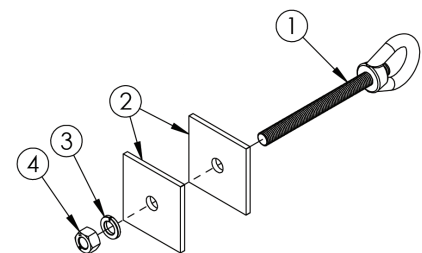


EMB-024
Bolt & Double Eye Nut Kit
Series 4000 "E" Application
5.7 lbs.

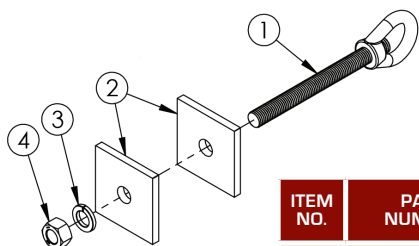
ITEM NO.	PART NUMBER	QTY	DIMENSIONS
1	TR0750-0003	1	3/4" x 9 1/2"
2	SW0813-0005	2	4" x 4" x 3/8"
3	LW0750-0001	1	3/4"
4	EN0750-0002	2	3/4"

EMB-025
Bolt & Single Eye Nut Kit
5/8" Bolt "S" Application
2.9 lbs.

ITEM NO.	PART NUMBER	QTY	DIMENSIONS
1	GA103634	1	5/8" x 7 1/2"
2	SW0688-0002	2	3 1/2" x 3 1/2" x 1/4"
3	LW0625-0004	1	5/8"
4	HN0625-0004	1	5/8"



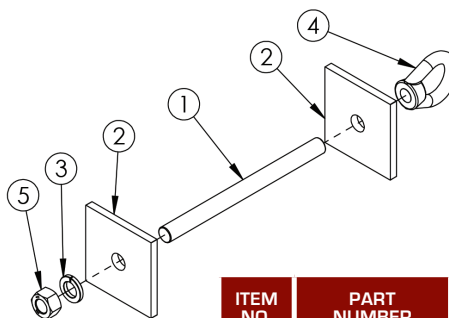
HARDWARE CATALOG



EMB-026

Bolt & Single Eye Nut Kit
3/4" Bolt "S" Application
4.1 lbs.

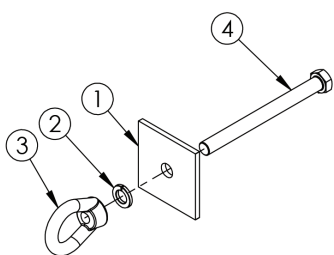
ITEM NO.	PART NUMBER	QTY	DIMENSIONS
1	GA103633	1	3/4" x 8"
2	SW0813-0003	2	3 1/2" x 3 1/2" x 3/8"
3	LW0750-0001	1	3/4"
4	HN0750-0001	1	3/4"



EMB-027

Bolt & Single Eye Nut Kit
Series 4000 "S" Application
5.3 lbs.

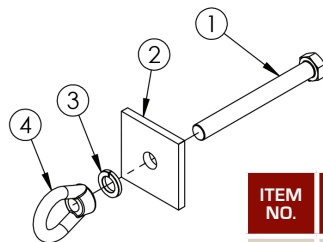
ITEM NO.	PART NUMBER	QTY	DIMENSIONS
1	TR0750-0003	1	3/4" x 9 1/2"
2	SW0813-0005	2	4" x 4" x 3/8"
3	LW0750-0001	1	3/4"
4	EN0750-0002	1	3/4"
5	HN0750-0001	1	3/4"



EMB-028

Bolt & Single Eye Nut Kit
5/8" Bolt Center Position
Application - 2.1 lbs.

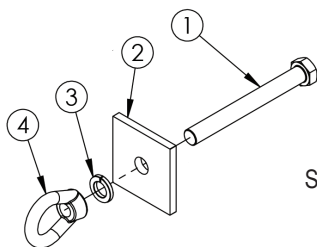
ITEM NO.	PART NUMBER	QTY	DIMENSIONS
1	SW0688-0002	1	3 1/2" x 3 1/2" x 1/4"
2	LW0625-0004	1	5/8"
3	EN0625-0003	1	5/8"
4	HB0625-0023	1	5/8" x 7"



EMB-029

Bolt & Single Eye Nut Kit
3/4" Bolt Center Position
Application - 2.9 lbs.

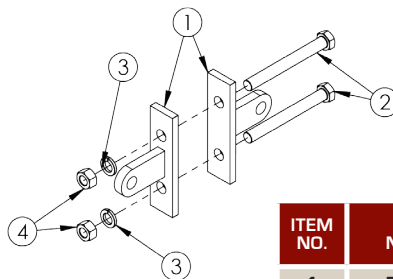
ITEM NO.	PART NUMBER	QTY	DIMENSIONS
1	HB0750-0004	1	3/4" x 6 3/4"
2	SW0813-0003	1	3 1/2" x 3 1/2" x 3/8"
3	LW0750-0001	1	3/4"
4	EN0750-0002	1	3/4"



EMB-030

Bolt & Single Eye Nut Kit
Series 4000 Center Position
Application - 3.4 lbs.

ITEM NO.	PART NUMBER	QTY	DIMENSIONS
1	HB0750-0004	1	3/4" x 8"
2	SW0813-0003	1	4" x 4" x 3/8"
3	LW0750-0001	1	3/4"
4	EN0750-0002	1	3/4"



EMB-031

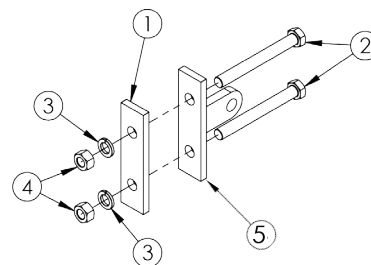
Double Arm Deadend
Series 2520/3020
Eye Kit "E" Application
8.8 lbs.

ITEM NO.	PART NUMBER	QTY	DIMENSIONS
1	BK-0002	2	—
2	HB0750-0004	2	3/4" x 6 3/4"
3	LW0750-0001	2	3/4"
4	HN0750-0001	2	3/4"

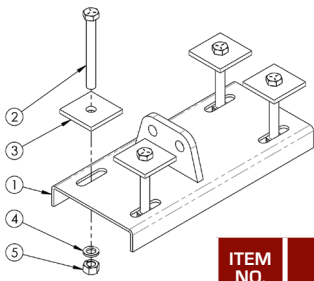
EMB-032

Double Arm Deadend
Series 2520/3020
Eye Kit "S" Application
7.6 lbs.

ITEM NO.	PART NUMBER	QTY	DIMENSIONS
1	PL-0006	1	—
2	HB0750-0004	2	3/4" x 6 3/4"
3	LW0750-0001	2	3/4"
4	HN0750-0001	2	3/4"
5	BK-0002	1	—

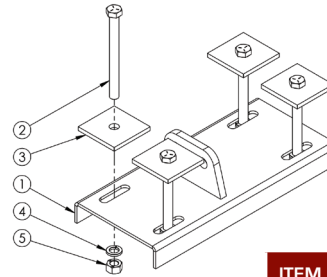


PL013 HARDWARE CATALOG



BMB-018
H-frame Double Arm Spacer
Bracket For Series 3000 Arms
33.4 lbs.

ITEM NO.	PART NUMBER	QTY	DIMENSIONS
1	BK-0059	1	20 ¹ / ₈ " x 9"
2	HB0750-0004	4	³ / ₄ " x 6 ³ / ₄ "
3	SW0813-0003	4	3 ¹ / ₂ " x 3 ¹ / ₂ " x ³ / ₈ "
4	LW0750-0001	4	³ / ₄ "
5	HN0750-0001	4	³ / ₄ "



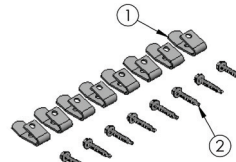
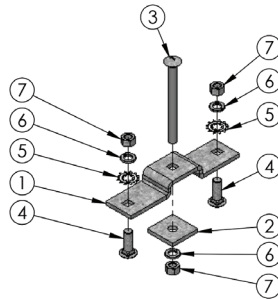
BMB-019
H-frame Double Arm Spacer
Bracket For Series 4000 Arms
35.6 lbs.

ITEM NO.	PART NUMBER	QTY	DIMENSIONS
1	BK-0059	1	20 ¹ / ₈ " x 9"
2	HB0750-0006	4	³ / ₄ " x 8"
3	SW0813-0005	4	4" x 4" x ³ / ₈ "
4	LW0750-0001	4	³ / ₄ "
5	HN0750-0001	4	³ / ₄ "

BMB-060

Cutout/Arrestor Bracket Kit - 2.4 lbs.

ITEM NO.	PART NUMBER	QTY	DIMENSIONS
1	BK-0003	1	8 ⁵ / ₈ " x 2"
2	SW0563-0009	1	2" x 2" ¹ / ₄ "
3	CB0500-0010	1	¹ / ₂ " x 5 ¹ / ₂ "
4	CB0500-0008	2	¹ / ₂ " x 1 ¹ / ₂ "
5	TW0500-0008	2	¹ / ₂ "
6	LW0500-0007	3	¹ / ₂ "
7	HN0500-0005	3	¹ / ₂ "

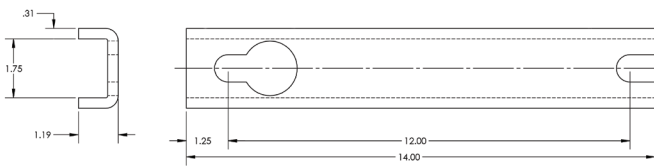


HDWR-GC
Ground Wire Clip Kit - 0.2 lbs.

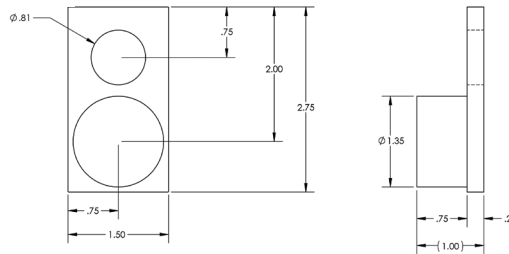
ITEM NO.	PART NUMBER	QTY	DIMENSIONS
1	Copper Clips	8	—
2	Self-Tap Screw	8	#8 - 18 x 1"

BK-0016

Flat Pole Mount Adapter - 4.6 lbs.



BK-0015
Crossarm Uplift Preventor
0.6 lbs.



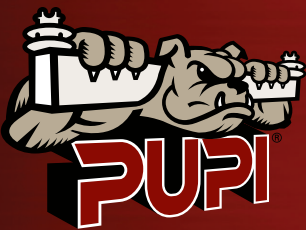
SunGUARD™ Touch Up Coating

Available in Grey or Brown
Spray Can – 12 oz. net



4 REV07.2014

FOR MORE PRODUCT INFORMATION VISIT:
www.pupicrossarms.com



CONTACT:

1421 Second Ave. NW
Stewartville, MN 55976 USA
800.533.1680 or 507.533.6076
Fax: 507.533.4784
pupisales@geotekinc.com

BUILT IN USA

PUPI crossarms and braces are designed and built in the USA. All of our fiberglass pultrusion, fabrication and assembly is performed at our plant in Stewartville, MN.

PUPI is a product of:

