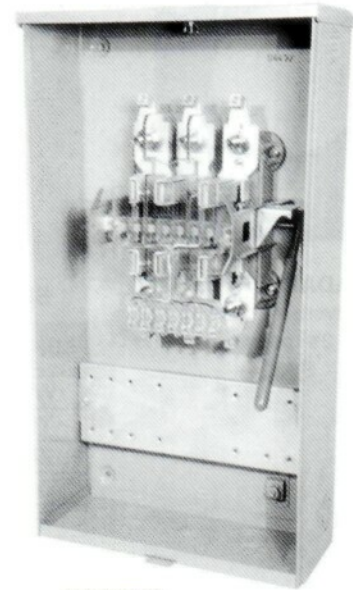
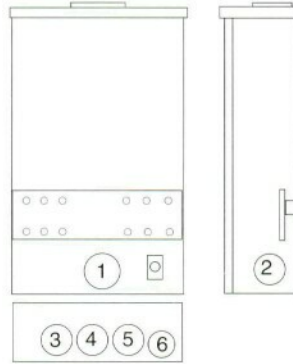
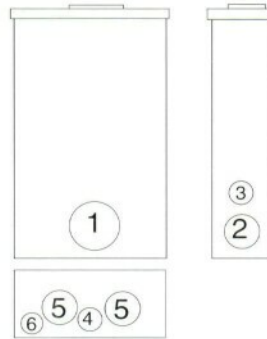


U4490-XL



U4497-XL

20 AMP—1 PIECE COVER—RINGLESS—WITH PROVISION FOR TEST SWITCH

NO. OF TERMS	SERVICE	CATALOG NUMBER	HUB	CONNECTORS CU	BY-PASS	DIMENSIONS			CONCENTRIC K.O.'S						
						D"	W"	H"	1	2	3	4	5	6	
6	OH / UG	U4494-XL	C.P.	#14 - #4 MAX	LEVER	4 ⁷ / ₈	12	22	1 ¹ / ₄	1 ¹ / ₄	1 ¹ / ₄	1 ¹ / ₄	1 ¹ / ₄	1 ¹ / ₄	1 ¹ / ₄ , 1 ¹ / ₂
7	OH / UG	U4495-XL	C.P.	#14 - #4 MAX	LEVER	4 ⁷ / ₈	12	22	1 ¹ / ₄	1 ¹ / ₄	1 ¹ / ₄	1 ¹ / ₄	1 ¹ / ₄	1 ¹ / ₄	1 ¹ / ₄ , 1 ¹ / ₂
8	OH / UG	U4496-XL	C.P.	#14 - #4 MAX	LEVER	4 ⁷ / ₈	12	22	1 ¹ / ₄	1 ¹ / ₄	1 ¹ / ₄	1 ¹ / ₄	1 ¹ / ₄	1 ¹ / ₄	1 ¹ / ₄ , 1 ¹ / ₂
13	OH / UG	U4497-XL	C.P.	#14 - #4 MAX	LEVER	4 ⁷ / ₈	12	22	1 ¹ / ₄	1 ¹ / ₄	1 ¹ / ₄	1 ¹ / ₄	1 ¹ / ₄	1 ¹ / ₄	1 ¹ / ₄ , 1 ¹ / ₂

80 AMP TRANSFORMER RATED—LEVER BYPASS—RINGLESS

NO. OF TERMS	SERVICE	CATALOG NUMBER	HUB	CONNECTORS CU	BY-PASS	DIMENSIONS			CONCENTRIC K.O.'S						
						D"	W"	H"	1	2	3	4	5	6	
6	OH / UG	U4490-XL	C.P.	#14 - #4 MAX	LEVER	4 ⁷ / ₈	10	18 ¹ / ₂	3	1 ¹ / ₂	3 ³ / ₄	3 ³ / ₄	1 ¹ / ₂	1 ¹ / ₄	
7	OH / UG	U4491-XL	C.P.	#14 - #4 MAX	LEVER	4 ⁷ / ₈	10	18 ¹ / ₂	3	1 ¹ / ₂	3 ³ / ₄	3 ³ / ₄	1 ¹ / ₂	1 ¹ / ₄	
8	OH / UG	U4492-XL	C.P.	#14 - #4 MAX	LEVER	4 ⁷ / ₈	10	18 ¹ / ₂	3	1 ¹ / ₂	3 ³ / ₄	3 ³ / ₄	1 ¹ / ₂	1 ¹ / ₄	
13	OH / UG	U4493-XL	C.P.	#14 - #4 MAX	LEVER	4 ⁷ / ₈	10	18 ¹ / ₂	3	1 ¹ / ₂	3 ³ / ₄	3 ³ / ₄	1 ¹ / ₂	1 ¹ / ₄	

- **BYPASS:** Lever operates current bypass device and also supplies clamping action on current meter spades.
- **PREWIRING:** If standard factory pre-wiring is required, refer to wiring diagrams in the general engineering section of the Standard Milbank catalog. Determine appropriate diagram and send copy with order. If custom factory prewiring is required, specify on order. Be sure to include meter socket catalog number, test switch model and number, and meter form number. Please be sure to provide a copy of your wiring diagram.
- **TEST SWITCH COVERS:** Units on this page can be used with clear lexan cover. See accessory page for ordering information.
- **CONNECTORS:** Units are supplied with mechanical type connectors (#4 max.) If compression type connectors (#10) are preferred, change catalog prefix to "S" (i.e. U4497-XL becomes S4497-XL.) The "S" also designates non-U/L.
- **REMOVABLE HANDLE:** When removable handle is desired add suffix "-RH" to catalog number (i.e. U4493-XL becomes U4493-XL-RH.)
- **REPLACEMENT REMOVABLE HANDLE:** When a replacement removable handle (RH) is required order part #Z706850-SC. Replacement handle will only work with factory ordered RH units.
- ***BLOCK ASSEMBLY:** Block assembly rated at 80 amps—test switch rated at 20 amps—therefore, unit defaults to test switch rating of 20 amps.

20 & 80 AMP

TRANSFORMER RATED

TRANSFORMER RATED—LEVER BYPASS—RINGLESS

HEAVY DUTY LEVER BYPASS METER SOCKETS & PEDESTALS

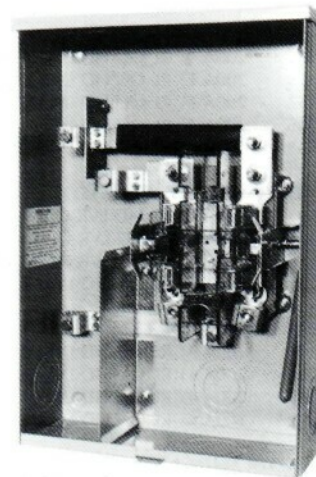
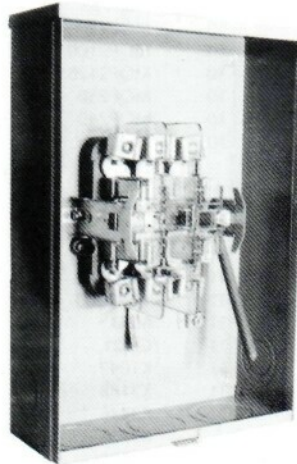
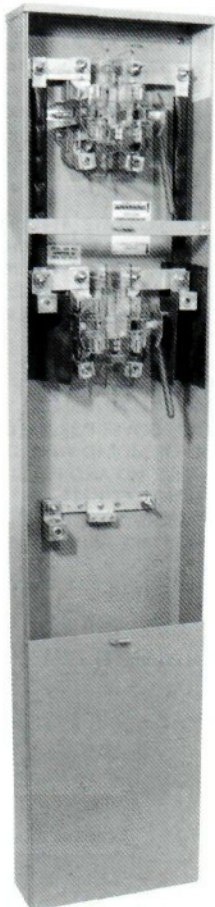
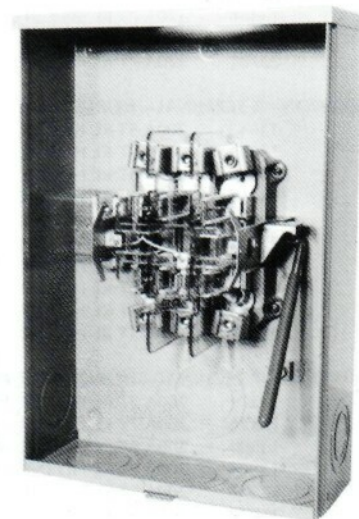
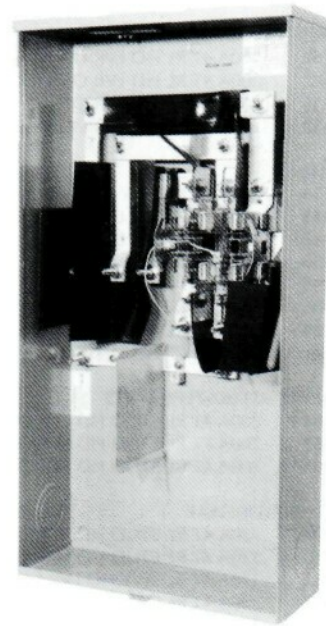
The meter sockets in this catalog are NEMA 3R rated enclosed devices which have jaw terminals to accommodate the matching terminal blades on an "S" base watt-hour meter. The lever supplies clamping action on meter spades and also operates bypass device. These sockets are available in 200, and 320 amperes, continuous duty rating. **On all heavy duty meter sockets the lever bypass is fully rated.** Ringless type sockets use the cover as the sealing means for the utility.

Also shown are 20 & 80 Amp Enclosures, Transformer Rated with current lever bypass device which also provides clamping action on current meter spades.

Horizontal and Vertical Meter Gang enclosures, along with Condominium Metering Banks, and Meter Mains are also available in this catalog.

Our highly engineered and tested meter base assemblies are the most durable in the industry. Combined with commercial grade zinc coated steel, and an electrostatically applied baked polyester powder coating, our enclosures are outstanding in the industry.

Utility requirements for this equipment may vary. Always consult the serving utility for their requirements before ordering or installing equipment in this section.



INTERCHANGEABLE UNIT HUBS



HUB ADAPTER PLATE
(Converts 4" opening to 2½" opening.)
S8324



SMALL "RL" OPENING

SUFFIX	SIZE	MILBANK NO.
WL	1"	A7514
YL	1¼"	A7515
ZL	1½"	A7516
DL	2"	A7517
EL	2½"	A7518

LARGE "R" OPENING

SUFFIX	SIZE	MILBANK NO.
F	3"	A8110
G	3½"	A8111
H	4"	A8112



REMOVABLE HUB CLOSING PLATE

DESCRIPTION	SUFFIX	CAT. #
SMALL (for -RL opening)	-XL	S7551
LARGE (for -R opening)	-X	S9064
REDUCER	-RRL	S8324

BREAKER CHART

CATALOG NUMBER	AMPERAGE	NUMBER OF POLES
MQP1020	20	SINGLE
MQP1030	30	SINGLE
MQP2030	30	DOUBLE
MQP2040	40	DOUBLE
MQP2050	50	DOUBLE
MQP2060	60	DOUBLE
MQP2100	100	DOUBLE
WBJ2150	150	DOUBLE
WBJ2200	200	DOUBLE
K3701	SUB-FEED LUG KIT	

HUB SUFFIX CHART

SUFFIX	DESCRIPTION	SUFFIX	SIZE	APPLICATION
O	Plain Top	WL	1"	For -RL Opening
RL	Small Hub Opening	YL	1¼"	For -RL Opening
R	Large Hub Opening	ZL	1½"	For -RL Opening
XL	Small Closing Plate	DL	2"	For -RL Opening
X	Large Closing Plate	EL	2½"	For -RL Opening
RXL	Large Hub Opening adapted to small Closing Plate	F	3"	For -R Opening
		G	3½"	For -R Opening
RRL	Large Hub Opening adapted to small Hub Opening	H	4"	For -R Opening

PLUG-IN BREAKER COMPATIBILITY CHART

AMPS	MILBANK	CUTLER-HAMMER (WESTINGHOUSE)	ITE	MURRAY / CROUSE-HINDS	G.E.	SQUARE D
125-200	—	HQP / BR / WBJ	—	MD	Q LINE	—
≤ 125	TYPE MQP	QUICKLAG P / BR / HQP	QP	MP	Q LINE	HOMELINE



K1540

SINGLE LUG ASSEMBLY

SUFFIX	CATALOG #	(3 per set) - 1 ∅
K1	K1539	6-350 kcmil
K3	K1540	4-600 kcmil
K3	K1540	Also (2) 1/0-250 kcmil

CONNECTOR KITS



K1541

TWIN LUG ASSEMBLY

SUFFIX	CATALOG #	(3 per set) - 1 ∅
K2	K1350	6-350 kcmil
K4	K1541	4-600 kcmil

MILBANK METER SOCKET ACCESSORIES

ACCESSORIES

