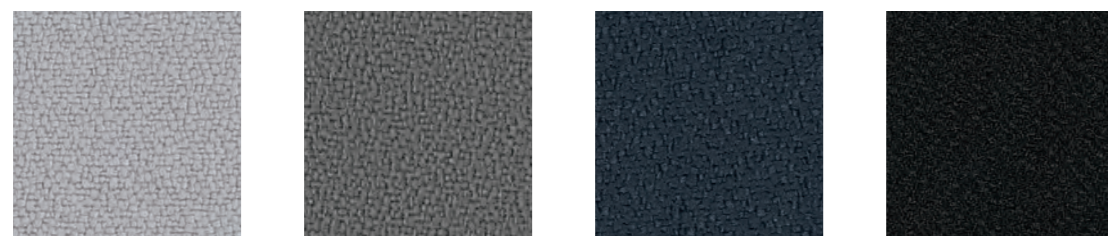
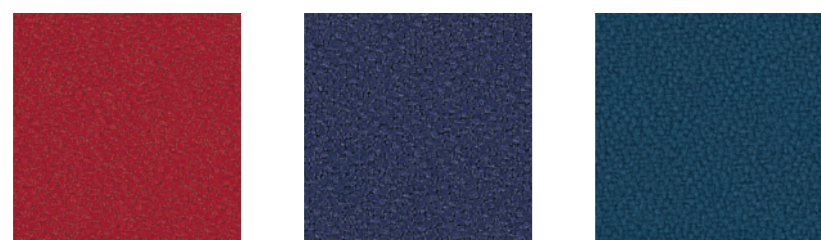


Xtreme – 100% recycled polyester – crêpe structure – stretchy – durable

PRICE GROUP 1



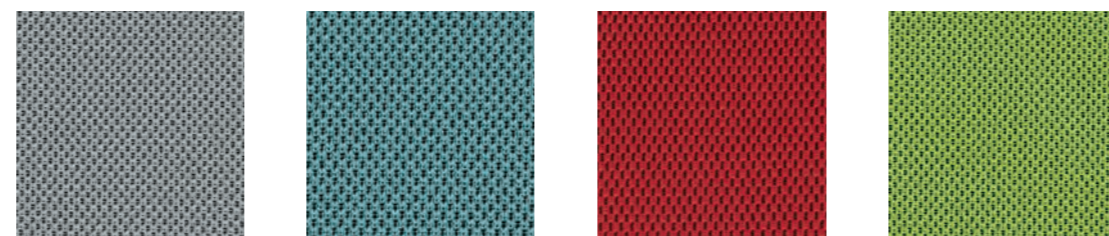
Xtreme - EXR094 Xtreme - EXR081 Xtreme - EXR145 Xtreme - EXR009



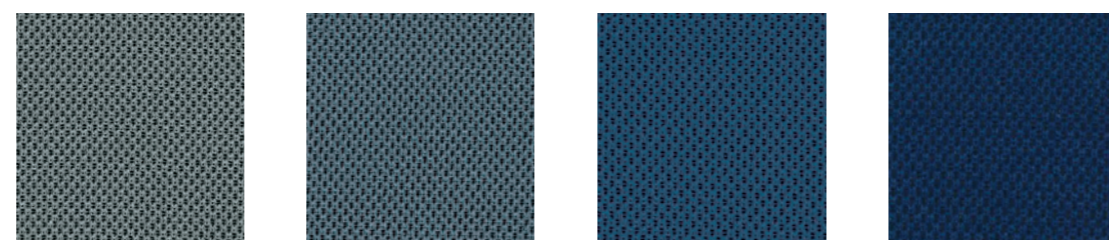
Xtreme - EXR079 Xtreme - EXR024 Xtreme - EXR026

Nexus – Polyester knit – piqué structure – two-dimensional stretch – durable

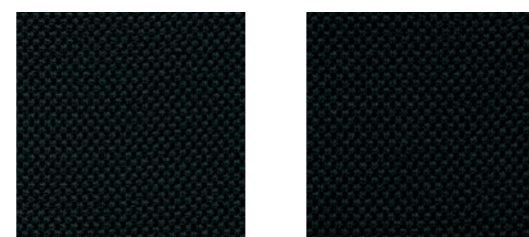
PRICE GROUP 3



Nexus - NEX07 Nexus - NEX10 Nexus - NEX16 Nexus - NEX05



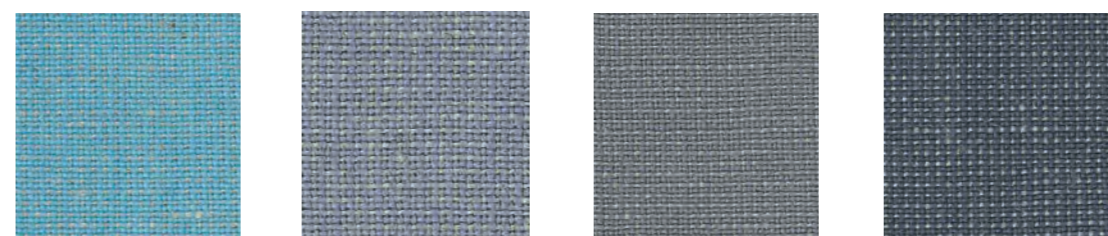
Nexus - NEX01 Nexus - NEX08 Nexus - NEX03 Nexus - NEX15



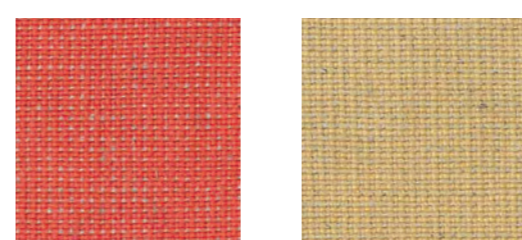
Nexus - NEX11 Nexus - NEX13

Patina – Wool / flax blend – fine structure – delicate feel – natural mélange effect – durable

PRICE GROUP 3



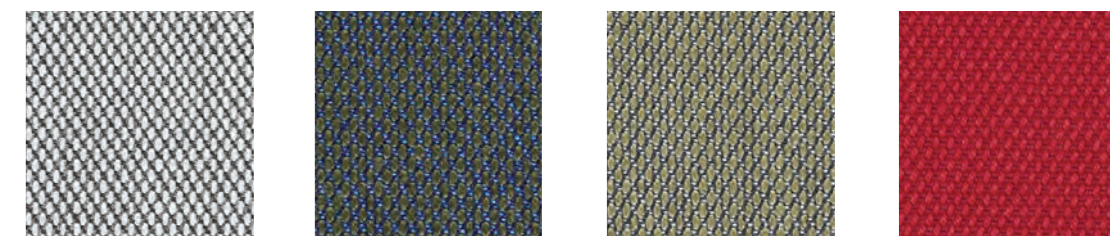
Patina - PAT01 Patina - PAT04 Patina - PAT34 Patina - PAT24



Patina - PAT15 Patina - PAT16

Steelcut trio 3 – New wool worsted – semi-plain structure – tricoloured 3D effect – solid – hard wearing

PRICE GROUP 4



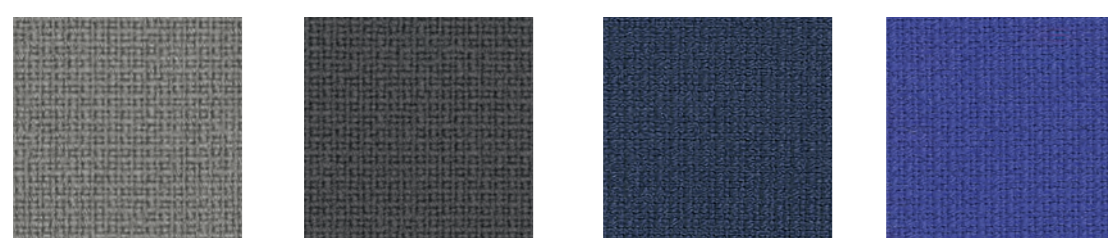
Steelcut Trio 2 - STT133 Steelcut Trio 2 - STT883 Steelcut Trio 2 - STT253 Steelcut Trio 2 - STT1652



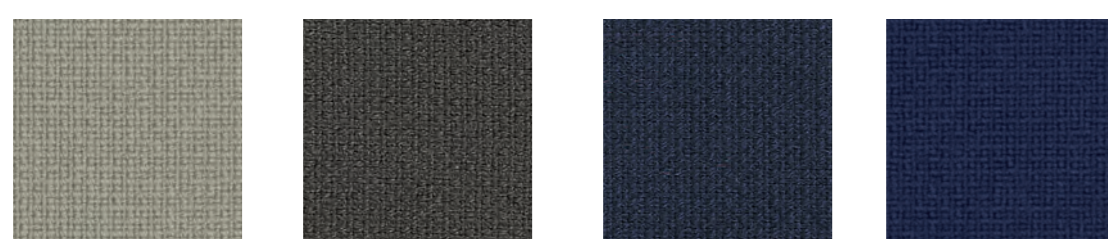
Steelcut Trio 2 - STT153 Steelcut Trio 2 - STT383 Steelcut Trio 2 - STT1192

Fame – New Zealand wool worsted – basic structure – soft – durable

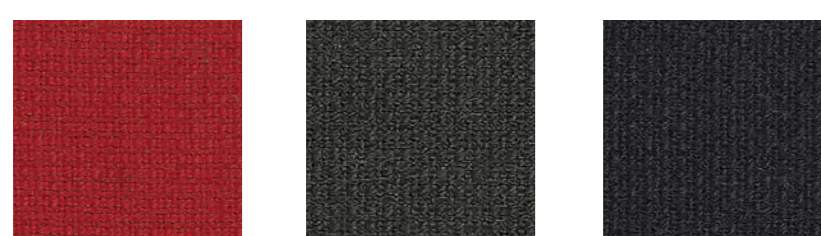
PRICE GROUP 2



Fame - FM60101 Fame - FM60003 Fame - FM66071 Fame - FM66075



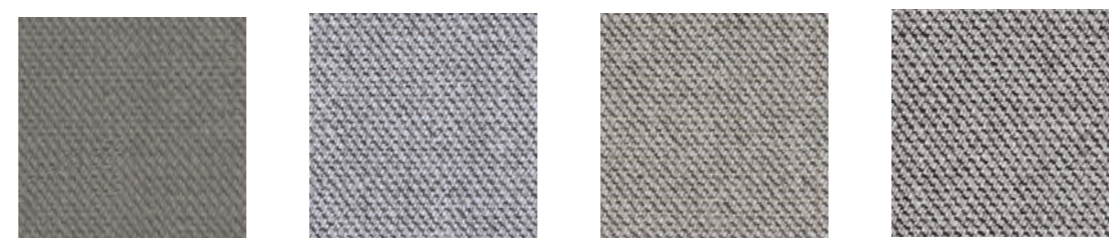
Fame - FM61136 Fame - FM60019 Fame - FM66061 Fame - FM66005



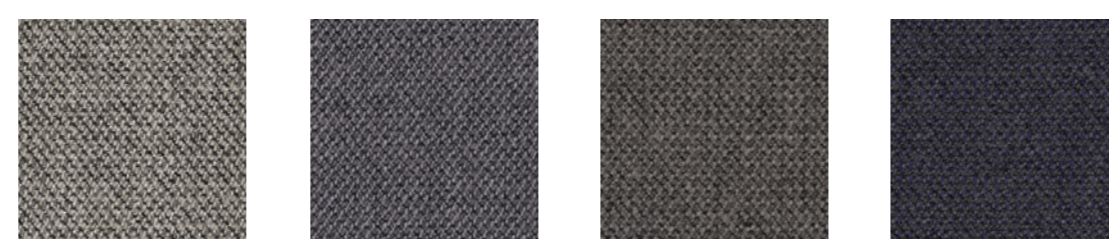
Fame - FM64089 Fame - FM60051 Fame - FM60999

Capture – New Zealand wool – lightly felted – soft – durable

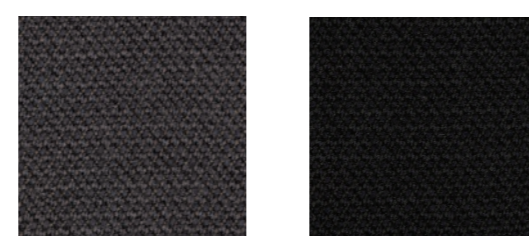
PRICE GROUP 3



Capture - CPT5601 Capture - CPT4102 Capture - CPT4101 Capture - CPT4001



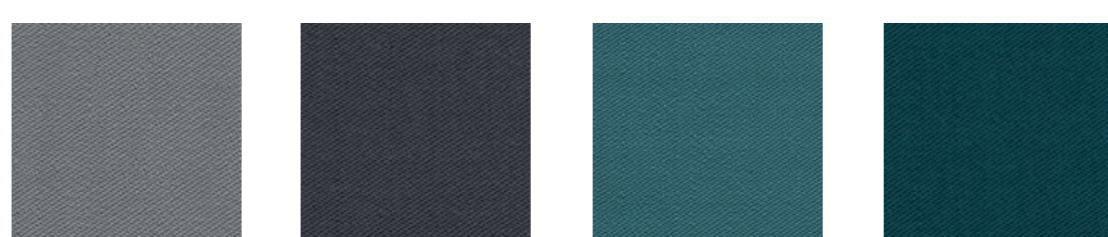
Capture - CPT4401 Capture - CPT4601 Capture - CPT4201 Capture - CPT5201



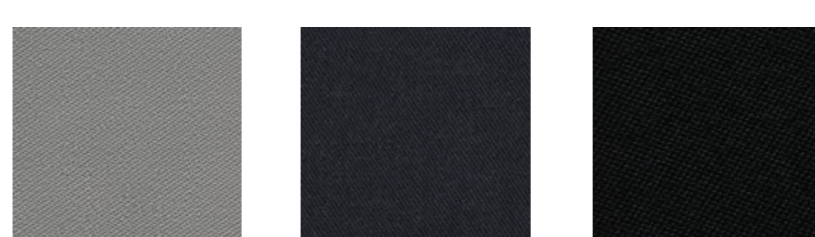
Capture - CPT5501 Capture - CPT5701

Note – New Zealand wool worsted – satin structure – soft – strong

PRICE GROUP 3



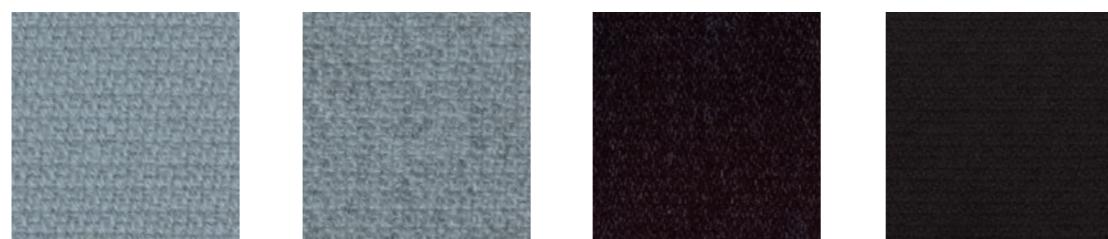
Note - NT60088 Note - NT60003 Note - NT67066 Note - NT67033



Note - NT61148 Note - NT60087 Note - NT60999

Sirdal and Suldal – 100% pure Norwegian wool – wollen – granité structure – high resilience – durable

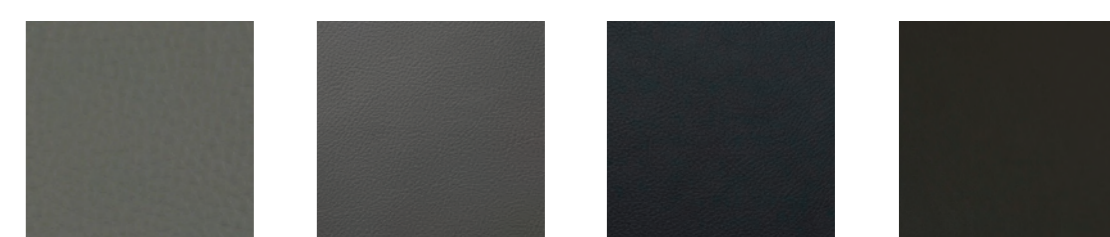
PRICE GROUP 4



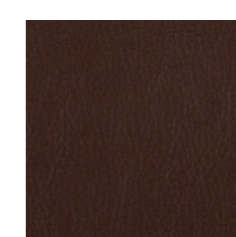
Sirdal - SRD 730 Suldal - SUL 810 Suldal - SUL 180 Sirdal - SRD 190

Paloma soft – Semi-aniline leather – chrome-free – soft – high durability

PRICE GROUP 6



Paloma Soft - ATG55115 Paloma Soft - ATG55206 Paloma Soft - ATG55185 Paloma Soft - ATG56100



Paloma Soft - ATG55130

Flokk

Fabrics and colours Standard collection

Inspire great work

Standard Collection TECHNICAL SPECIFICATIONS

	XTREME by Camira	FAME by Gabriel	CAPTURE by Gabriel	PATINA by Camira	NEXUS by Camira	NOTE by Gabriel	STEELCUT TRIO 3 by Kvadrat	SIRDAL/SULDAL by GU*	COMFORT+ by Gabriel	PALOMA SOFT by Wollsdorf
COMPOSITION (%)										
Wool	-	95	85	69	-	85	90	-	-	-
Norwegian wool	-	-	-	-	-	-	-	100	-	-
Flax	-	-	-	22	-	-	-	-	-	-
Polyurethane	-	-	-	-	-	-	-	-	12	-
Polyamide	-	5	15	8	-	15	10	-	-	-
Polyester	-	-	-	-	100	-	-	-	51	-
Recycled Polyester	100	-	-	-	-	-	-	-	37	-
Viscose	-	-	-	1	-	-	-	-	-	-
Cattle hides	-	-	-	-	-	-	-	-	-	100
ENVIRONMENTAL FACTS										
EU Ecolabel	◆	◆	◆	◆	-	◆	◆	-	-	-
Oeko-Tex® Standard 100	-	◆	◆	-	◆	◆	-	-	◆	-
ISO 14001 certified (company)	◆	◆	◆	◆	◆	◆	◆	◆	◆	◆
100% free of heavy metals	◆	◆	◆	◆	◆	◆	◆	◆	◆	◆
ECO ₂ L	-	-	-	-	-	-	-	-	-	◆
Blue Angel RAL-U2 148	-	-	-	-	-	-	-	-	-	◆
Chrome-free leather tanning	-	-	-	-	-	-	-	-	-	◆
FLAMMABILITY										
BS EN 1021 – Cig. & Match	◆	◆	◆	◆	◆	◆	◆	◆	◆	◆
BS 7176 Low Hazard	◆	-	-	◆	◆	-	◆	-	-	-
BS 7176 Medium Hazard	◆	-	-	◆	-	-	-	-	-	-
NF D 60-013	◆	-	-	-	-	-	-	-	-	-
DIN 4102 BI	◆	-	-	-	-	-	-	-	-	-
BS 5852 P 2 crib 5	◆	◆	◆	◆	-	◆	-	-	-	◆
CA TB 117-2013	-	◆	◆	-	-	◆	◆	-	◆	-
IMO MSC 307 (88) Annex 1 part 8	-	◆	-	-	-	◆	◆	◆	-	◆
FASTNESS TO RUBBING										
Dry	4	4-5	4-5	4	4	4-5	4-5	4-5	4-5	1000/4
Wet	4	4-5	4-5	3	4	4	3-5	4	4	80/4
OTHER										
Weight (g/m)	435	630	475	460	530	510	770	800	385	-
Width (cm)	140	140	140	140	173	140	140	133	140	-
Abrasion (Martindale)	100 000	200 000	200 000	100 000	100 000	200 000	100 000	>57 000	150 000	-
Pilling	4	4	4-5	3	4	4	4	3-4	5	-
Light fastness	6	5-7	5-7	5	5	5-7	5-7	5-7	5-7	6

MAINTENANCE

To be vacuumed with a furniture brush or wiped with a clean, white cloth or sponge slightly dampened with clean lukewarm water.

camirafabrics.com
gabriel.dk
gu.no
kvadrat.dk
wollsdorf.com

Flokk AS
Fridtjof Nansens vei 12
P.O. Box 5055 Majorstuen
NO-0301 Oslo, Norway

flokk.com

GU* Gudbrandsdalens Uldvarefabrik