



FINE ART + ANTIQUES



**BRUUN RASMUSSEN**

PART OF THE BONHAMS NETWORK

# MALERIER + ANTIKVITETER

Traditionel Auktion 912



## AUKTION

Mandag 6. marts kl. 15

Onsdag 8. marts kl. 15

## EFTERSYN

Torsdag 2. marts kl. 15 - 18

Fredag 3. marts kl. 11 - 17

Lørdag 4. marts kl. 11 - 16

Søndag 5. marts kl. 11 - 16

eller efter aftale



**BRUUN RASMUSSEN**  
KUNSTAUKTIONER

Bredgade 33 · 1260 København K · Tlf. +45 8818 1111  
info@bruun-rasmussen.dk · bruun-rasmussen.dk





## AUKTIONSKALENDER

---

<b>Mandag</b>	<b>6. marts</b>		
	kl. 15	Møbler, ure, sølv, bronzer, porcelæn og tæpper	1 - 111
	kl.18	Malerier og tegninger	112 - 212
<b>Tirsdag</b>	<b>7. marts</b>		
	kl. 17	Moderne malerier og skulpturer Grafik	
<b>Onsdag</b>	<b>8. marts</b>		
	kl. 15	Smykker og tasker	401 - 602
	kl. 18	Armbåndsure	
<b>Torsdag</b>	<b>9. marts</b>		
	kl. 16	Moderne kunsthåndværk Møbler, belysning og tæpper	

---

### VIGTIG INFORMATION VEDR. BUDGIVNING!

Bonhams' internationale kunder kan også byde med på Bruun Rasmussens aktuelle Traditionelle Auktion via Bonhams' hjemmeside: [bonhams.com](http://bonhams.com)

### SIDSTE FRIST FOR AFHENTNING: TIRSDAG DEN 21. MARTS

*Genstande købt på denne auktion skal være betalt senest otte dage efter fakturadatoen og afhentet i Bredgade 33 senest tirsdag den 21. marts. I modsat fald bliver de transporteret til Bruun Rasmussens lager på Paul Bergsøes Vej 16 i Glostrup for købers regning og risiko, hvor de kan afhentes fra torsdag den 23. marts. Transporten koster 150 kr. pr. genstand inkl. moms, og opbevaringen koster 150 kr. pr. genstand pr. påbegyndt uge inkl. moms.*



# FINE ART + ANTIQUES

Live Auction 912



## AUCTION

Monday	6 March	3 pm
Wednesday	8 March	3 pm

## PREVIEW

Thursday	2 March	3 pm - 6 pm
Friday	3 March	11 am - 5 pm
Saturday	4 March	11 am - 4 pm
Sunday	5 March	11 am - 4 pm

or by appointment



**BRUUN RASMUSSEN**  
AUCTIONEERS

Bredgade 33 · DK-1260 Copenhagen K · Tel +45 8818 1111  
info@bruun-rasmussen.dk · bruun-rasmussen.com





## DAYS OF SALE

---

<b>Monday</b>	<b>6 March</b>		
	3 pm	Furniture, clocks, silver, bronzes, porcelain and carpets	1 - 111
	6 pm	Paintings and drawings	112 - 212
<b>Tuesday</b>	<b>7 March</b>		
	5 pm	Modern paintings and sculptures Prints	
<b>Wednesday</b>	<b>8 March</b>		
	3 pm	Jewellery and handbags	401 - 602
	6 pm	Wristwatches	
<b>Thursday</b>	<b>9 March</b>		
	4 pm	Modern decorative art Furniture, lamps and carpets	

---

### IMPORTANT INFORMATION ABOUT BIDDING AT THE AUCTION

Bonhams' international customers can also bid at Bruun Rasmussen's current Live Auction via Bonhams' website: [bonhams.com](http://bonhams.com)

### DEADLINE FOR CLAIMING ITEMS: TUESDAY 21 MARCH

*Items bought at this auction must be paid no later than eight days from the date of the invoice and claimed at Bredgade 33 by Tuesday 21 March at the latest. Otherwise, they will be moved to Bruun Rasmussen's storage facility at Paul Bergsøes Vej 16 in Glostrup at the buyer's expense and risk. Here, they can be picked up from Thursday 23 March. This transportation will cost DKK 150 per item VAT included, and storage will cost DKK 150 per item per week VAT included.*

## Nye tider i auktionshuset

Hos Bruun Rasmussen har vi indledt 2023 med en lang række Netauktioner på [bruun-rasmussen.dk](http://bruun-rasmussen.dk) og åbner snart dørene til årets første Traditionelle Auktion i den historiske auktionssal i Bredgade 33 i hjertet af København. Som noget nyt holdes auktionen hen over en enkelt uge fra den 6.-9. marts, og her svinger vi hammeren over et stort udvalg af kunst i verdensklasse, designklassikere, sjældne antikviteter, diaman Smykker og armbåndsurre fra de mest kendte brands. Hele auktionens udbud er samlet i de tre auktionskataloger: "Fine Art & Antiques", "Modern Art & Watches" og "Design". Højdepunkterne tæller en malerisk farveekspllosion fra 1960'erne af den japanske avantgardekunstner Atsuko Tanaka, et mesterligt skibsmotiv fra den danske guldalder af maleren Martinus Rørbye, sjældne lamper af lysets mester PH og et vidunder af en fancy-gul diamantring. Før auktionen byder vi indenfor til eftersyn den 2.-5. marts, hvor man kan gå på opdagelse i udvalget og møde vores eksperter, der står klar til at fortælle og rådgive.

Vi oplever en stigende opmærksomhed omkring både vores Netauktioner og Traditionelle Auktioner. Det skyldes ikke mindst, at det nu er omkring et år siden, at vi hos Bruun Rasmussen blev en del af et internationalt netværk under Bonhams, der målt på global repræsentation samt antal eksperter og fagområder er verdens største auktionshus. Vi samarbejder og vidensdeler med førende vurderings eksperter og har fået adgang til endnu flere passionerede kunstsamlere og designentusiaster. For vores købere betyder det mange flere auktioner at vælge imellem og adgang til en langt større viden om de enkelte genstande. I netværket markedsfører vi hinandens auktioner på tværs af landegrænser til stor fordel for vores sælgere, der dermed opnår markedets højeste hammerslag. Hver gang vi holder auktion hos Bruun Rasmussen, kan Bonhams' kunder byde med direkte fra [bonhams.com](http://bonhams.com). Rejsen som en del af Bonhams' netværk er først lige begyndt, men har således allerede givet os mange muligheder som auktionshus.

Forandringen kalder også på nye måder at tænke og drive vores virksomhed på. Det har blandt andet ført til, at vi nu øger vores fokus på smykker, fashion, armbåndsurre og vin. Vi ser en massiv interesse for disse kategorier og kommer inden længe til at samle dem under en hat med overskriften "The Art of Luxury". Vi søger lige nu varer til den første "The Art of Luxury"-auktion til juni – læs mere om det nye tiltag og dine muligheder på s. 210. I løbet af året kommer vi ligeledes til at sætte spot på forskellige områder inden for vores andre kategorier. Det gælder blandt andet design med særauktionen "Danish Living – Design in Transition" til juni, mens det i september er den berømte kunstnerkoloni på Skagen, der står for skud, når vi blænder op for særauktionen "Northern Light". Vi gentager også sidste års succes med et brag af en CoBrA-auktion til december. Netop nu er vi på udkig efter design og kunst til disse tre særauktioner og står hver dag klar til at vurdere og tage imod indleveringer.

Årets nok største og mest gennemgribende forandring i auktionshuset sker til oktober. Her flytter alle vores afdelinger i københavnsområdet under samme tag i et nyt stort domicil i centrum af Lyngby. Vi ønsker at samle vores viden og ekspertise ét sted og skabe et nyt og levende kulturhus, hvor vores kunder, uanset om de er interesserede i mønter, vintagetasker eller samtidskunst, kan gå på opdagelse blandt de tusindvis af udstillede genstande, deltage i events, høre spændende kunstforedrag og opleve vores auktioner i det nye moderne auktionshus.

Vi glæder os til at byde alle velkommen til et begivenhedsrigt år hos Bruun Rasmussen – Part of the Bonhams Network!



## New Times at the Auction House

Here at Bruun Rasmussen, 2023 has started with a long list of Online Auctions at [bruun-rasmussen.dk](http://bruun-rasmussen.dk), and we will soon be opening the doors to the year's first Live Auction in the historic auction room at Bredgade 33 in the heart of Copenhagen. As a new initiative, the auction will be held over a single week from 6–9 March, when we will be swinging the hammer over a large selection of world-class art, design classics, rare antiques, diamond jewellery and wristwatches from the most famous brands. Everything up for auction is gathered in the three auction catalogues: "Fine Art & Antiques", "Modern Art & Watches" and "Design". The highlights include a picturesque explosion of colour from the 1960s by the Japanese vant-garde artist Atsuko Tanaka, a masterful ship motif from the Danish Golden Age by the artist Martinus Rørbye, rare lamps by the master of lighting PH (Poul Henningsen), and a wondrous fancy yellow diamond ring. Before the auction, we would like to invite you to the preview from 2–5 March, where you can explore the selection and meet our experts who are on hand to inform and advise.

We are experiencing increasing awareness of both our Online Auctions and Live Auctions. This is not least due to the fact that it has now been about a year since Bruun Rasmussen became part of an international network under Bonhams, which, measured in terms of global representation as well as the number of experts and specialist fields, is the world's largest auction house. We collaborate and share knowledge with leading valuation experts and have gained access to even more passionate art collectors and design enthusiasts. For our buyers, this means many more auctions to choose from and access to a far greater pool of expertise on the individual items. Within the network, we market one another's auctions across national borders, greatly benefiting our sellers, who thus achieve the market's highest hammer price. Every time we hold an auction at Bruun Rasmussen, Bonhams' customers can bid directly from [bonhams.com](http://bonhams.com). The journey as part of the Bonhams network has only just begun, but it has already given us many opportunities as an auction house.

The change also calls for new ways of thinking and running our business. This has led to us increasing our focus on jewellery, fashion, wristwatches and wine, for example. We are seeing massive interest in these categories, and we will soon be gathering them under one umbrella under the heading "The Art of Luxury". We are currently on the lookout for items for the first "The Art of Luxury" auction in June – read more about the new initiatives and your options on p. 210. During the year, we will also be putting the spotlight on various areas within our other categories. This includes design, with the special "Danish Living – Design in Transition" auction in June, while in September, the famous artists' colony in Skagen will come under the spotlight at the special "Northern Light" auction. We are also repeating the success of last year with a magnificent CoBrA auction in December. We are currently on the lookout for design and art for these three special auctions and are on hand every day to value and receive consignments.

What will probably be the year's biggest and most sweeping change at the auction house will take place in October, when all our departments in the Copenhagen area are moving under the same roof at large, new premises in the centre of Lyngby. We wish to gather our knowledge and expertise in one place and create a vibrant, new cultural centre where, regardless of whether they are interested in coins, vintage bags or contemporary art, our customers can explore the thousands of items on display, participate in events, attend fascinating art lectures and experience our auctions in the modern, new auction house.

We look forward to welcoming everyone to an eventful year at Bruun Rasmussen – Part of the Bonhams Network!



## SPECIALISTS IN FINE ART AND ANTIQUES



*Paintings*  
Julie Arendse Voss  
+45 8818 1123  
jav@bruun-rasmussen.dk



*Paintings*  
Birte Stokholm  
+45 8818 1122  
bst@bruun-rasmussen.dk



*Paintings*  
Søren K. Holmstrup  
+45 8818 1127  
skh@bruun-rasmussen.dk



*Paintings*  
Sofie Normann Christensen  
+45 8818 1125  
snc@bruun-rasmussen.dk



*Jewellery*  
Katrin Mikkelsen Sørensen  
+45 8818 1174  
kms@bruun-rasmussen.dk



*Jewellery and handbags*  
Lise Jacobsen  
+45 8818 1175  
lij@bruun-rasmussen.dk



*Royal jewellery*  
Martin Hans Borg  
+45 8818 1128  
mhb@bruun-rasmussen.dk



*Director of Valuations and Sales*  
Kasper Nielsen  
+45 8818 1121  
kn@bruun-rasmussen.dk



*Director and Auctioneer*  
Alexa Bruun Rasmussen  
+45 8818 1091  
alexa@bruun-rasmussen.dk



*Shipping*  
Tina Bavnbek Jepsen  
+45 8818 1056  
tbj@bruun-rasmussen.dk



*Representative France + Belgium*  
Ditte Herborg Krogh  
+33 6 6185 4564  
dhk@bruun-rasmussen.dk



*Asian and decorative arts*  
Ralph Lexner  
+45 8818 1161  
rl@bruun-rasmussen.dk



*Silver and pocket watches*  
Heidi Schophuus Jensen  
+45 8818 1163  
hsj@bruun-rasmussen.dk



*Antiquities and decorative arts*  
Alexandra Nilsson  
+45 8818 1164  
ani@bruun-rasmussen.dk



*Decorative arts*  
Line Hjorth Langkjær  
+45 8818 1166  
lla@bruun-rasmussen.dk



*Asian and decorative arts*  
Torben Friis Møller  
+45 8818 1165  
tfm@bruun-rasmussen.dk



*Furniture, bronzes and clocks*  
Anders Fredsted  
+45 8818 1142  
afr@bruun-rasmussen.dk



*Furniture and carpets*  
Henrik Schleppegrel  
+45 8818 1145  
hsc@bruun-rasmussen.dk



*Director, Head of Department  
19th Century Paintings - Bonhams*  
Charles O'Brien  
+44 20 7468 8360  
charles.obrien@bonhams.com



*Global Head of Jewellery - Bonhams*  
Jean Ghika  
+44 20 7468 8282  
jean.ghika@bonhams.com

## Åbningsforedrag

Torsdag 2. marts kl. 17

### “Nye perspektiver på dansk guldalder”

I anledning af udstillingen

“Beyond the Light – Identity and Place in Nineteenth-Century Danish Art”  
på The Metropolitan Museum of Art i New York fortæller executive director  
hos AFSMK (American Friends of Statens Museum for Kunst)  
Hanne Støvring og kunstekspert Julie Arendse Voss fra Bruun Rasmussen  
om guldalderen i et internationalt perspektiv.

Alle er velkomne!

## Opening Lecture

Thursday 2 March, 5 pm

### “New Perspectives on the Danish Golden Age”

In recognition of the exhibition

“Beyond the Light – Identity and Place in Nineteenth-Century Danish Art”  
at The Metropolitan Museum of Art in New York, Hanne Støvring, the executive director  
of AFSMK (American Friends of the National Gallery of Denmark)  
and art expert Julie Arendse Voss from Bruun Rasmussen  
will be talking about the Golden Age from an international perspective.

All are welcome!





PAINTINGS AND DRAWINGS

Monday 6 March 6 pm

Lot 112 - 212





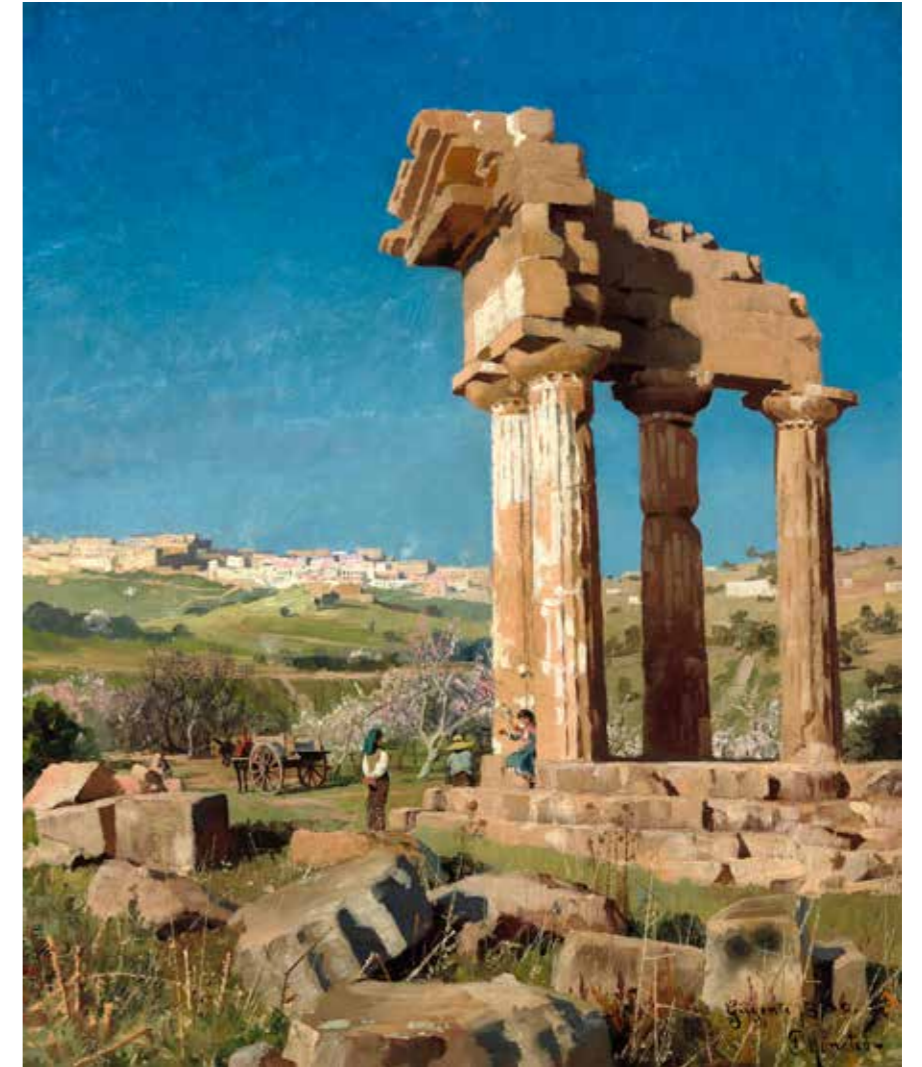
112

**112**  
**HOLGER H. JERICHAU**

b. Copenhagen 1861, d. s.p. 1900

View of Pompeii towards Mount Vesuvius with an artist by the easel in the foreground. Signed Holger H. Jerichau. Oil on canvas laid on canvas. 48 x 69 cm. Presumably sold at an auction of paintings by Holger H. Jerichau, Charlottenborg 1888 no. 53 with the title "Pompeii, seen oppe fra Høiderne" (Pompeii seen from the heights).

*As the son of the painter Elisabeth Jerichau-Baumann (1819-1881) and the sculptor Jens Adolf Jerichau (1816-1883), he grew up in a home of artists; his brother Harald (1851-1878) also became a painter. Holger H. Jerichau began a business education in Germany, which he, however, interrupted to learn the art of painting with his mother as his teacher. He lived most of his life abroad, especially in Italy, where the present painting is carried out.* DKK 30,000-40,000 / € 4,050-5,400



113

**113**  
**PEDER MØNSTED**

b. Grenaa 1859, d. Fredensborg 1941

View from Agrigento, Sicily, with local peasants resting at the Temple of the Dioscuri (Castor and Pollux). Signed and dated P. Mønsted Girgenti 1886. Inscribed on the reverse of the canvas 'Tempio Castore e Polluce. Pestum!'. Oil on canvas. 59 x 49 cm. DKK 50,000-60,000 / € 6,700-8,050



114

**114**  
**LAURITS TUXEN**

b. Copenhagen 1853, d. s.p. 1927

Autumn day at Skagen Nordstrand. Signed and dated L. T. 29-09-05. Oil on canvas.  
46 x 61 cm. *DKK 60,000–80,000 / € 8,050–11,000*

**115**  
**LAURITS TUXEN**

b. Copenhagen 1853, d. s.p. 1927

"Skagen Nordstrand". View from the beach in Skagen with children in the sunset. Signed and dated L. T. 25/3 10. Oil on canvas. 47 x 66 cm.  
*Lise Svanholm, A Catalogue Raisonné of the Works of Laurits Tuxen, 1990, no. 831, here listed as dated 5/3. DKK 50,000–75,000 / € 6,700–10,000*

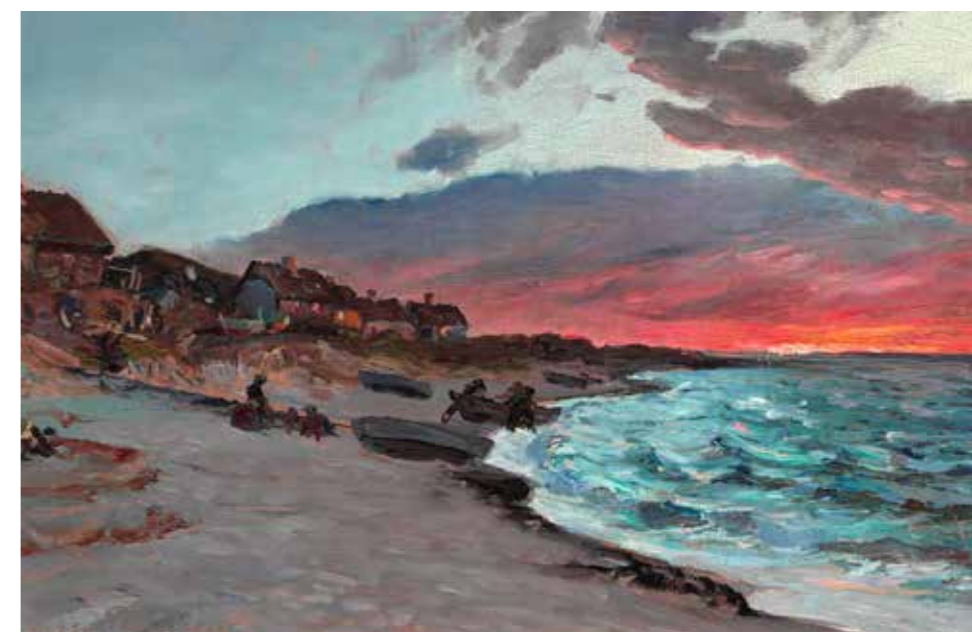
**116**  
**VIGGO PEDERSEN**

b. Copenhagen 1854, d. Roskilde 1926

"Aften. Tisvildeleje". An October Evening in Tisvildeleje. Signed and dated Viggo Pedersen Tisvildeleje October 1904. Oil on cardboard. 32 x 48 cm.  
*DKK 20,000–25,000 / € 2,700–3,350*



115



116



117

**117**  
**CARL LOCHER**

b. Flensburg 1851, d. Skagen 1915

Breakers at Skagen. Sailings ships at sea in grey and cloudy weather. Signed and dated Carl Locher. Skagen 1902. Oil on canvas. 59 x 96 cm.

*Provenance: Bruun Rasmussen auction 366, 1977 no. 138, ill. p. 107. DKK 30,000–40,000 / € 4,050–5,400*

**118**  
**PEDER MØNSTED**

b. Grenaa 1859, d. Fredensborg 1941

Mountain landscape at Königssee on a sunny day. Signed and dated P. Mønsted 1899. Oil on canvas. 87 x 54 cm.

*Königssee is a deep lake located at Berchtesgaden in Southeast Bavaria, Germany.*

*Provenance: Bruun Rasmussen auction 249, 1970 no. 430, ill. p. 31.*

*DKK 75,000–100,000 / € 10,000–13,500*

**119**  
**JULIUS OLSSON**

b. Islington, London 1864, d. Dalkey, Ireland 1942

A moonlit night off the coast of Cornwall. Signed Julius Olsson. Oil on canvas. 46 x 61 cm.

*Julius Olsson was born to a Swedish father and an English mother in 1864 and was brought up in Islington, London. Olsson showed an early talent and was largely self-taught, although he was later to become the founding father of the St Ives School of Painting and mentor to many successful St Ives artists. Julius Olsson was a member of the Royal Academy of Art. He is known for his dramatic coastal landscapes in Cornwall, e.g. around the harbour town of St Ives. The present painting is a fine example of his skill.*

*DKK 20,000–25,000 / € 2,700–3,350*



118



119



120

**120**  
**JOAKIM SKOVGAARD**

b. Copenhagen 1856, d. s.p. 1933

"Hyrden finder Lammet". The shepherd finds the lamb. Signed and dated J. S. 1910. Oil on panel. 65 x 52 cm.

The present painting is a repetition of the work "Hyrden finder Lammet" (The shepherd finds the lamb), which Skovgaard made for the altarpiece in Gørlev Valgmenighedskirke, North Western Sealand, that one exhibited at Den Frie Udstilling 1910 no. 301. The painting depicts The Parable of the Lost Sheep, Matthew 18:12–14: "If a man has a hundred sheep and one of them wanders away, what will he do? Won't he leave the ninety-nine others on the hills and go out to search for the one that is lost? (12). And if he finds it, I tell you the truth, he will rejoice over it more than over the ninety-nine that didn't wander away" (13).

Skovgaard made several versions of the motif, and there is thus also a version in Vester Church, Give in Jutland. DKK 30,000–40,000 / € 4,050–5,400



121

**121**  
**H. A. BRENDEKILDE**

b. Brændekilde 1857, d. Jyllinge 1942

An Egyptian man. Brendekilde's helper. 1890. Signed H. A. B. Inscribed on the reverse of the canvas (in Danish) "Matsuali[?] Booker, my Helper in Egypt. 1890. H. A. B." Oil on canvas. 48 x 22 cm. Provenance: Bruun Rasmussen auction 161, 1964 no. 25.

The present painting is a study for the larger painting "Outside Cairo (View from the desert of Cairo with the Citadel and Mamluk Tombs in the background)" sold at Bruun Rasmussen auction 886, 2019 no. 179 for DKK 180.000.

On New Year's Day 1890, Brendekilde travelled to Egypt, where he stayed first in Alexandria and then in Cairo. During his stay, he was helped by locals to find his way in the foreign country, for example by Matsuali[?] Booker, whom he has depicted in the present painting. The crowded streets, the foreign culture and the grandiose architecture made a great impression on the artist. He was particularly fascinated by the local people and painted a number of portraits of Egyptians, and he also described their customs, appearance and beautiful clothing in letters home. Brendekilde wrote to his friend and patron widow Blumensaadt (in Danish): "Here it has occurred to me that the clothing of the European looks rather ridiculous. He shares too much of a resemblance with a dressed-up monkey." (cited from Fyns Kunstmuseum, "H. A. Brendekilde 1857–1942", 1995, p. 20). In order to better fit in with the locals, Brendekilde acquired an Arabian peasant clothing in indigo-coloured and saffron yellow embroidered silk and a pair of soft camel leather shoes. DKK 25,000–30,000 / € 3,350–4,050



122

122  
**PAUL FISCHER**

b. Copenhagen 1860, d. Gentofte 1934

Two elegant ladies buying flowers at Højbro Plads. In the background Christiansborg Palace and Chapel. In the distance the Stock Exchange's Dragon Spire can be seen. Signed and dated Paul Fischer 1929. Oil on canvas. 51 x 63 cm.

*The present painting gives a very good impression of what made Paul Fischer so popular over the years. He captures the pulse of the capital. We are in the heart of Copenhagen at Højbro Plads with the colourful flower stalls and the equestrian statue of Absalon almost hidden between the trees. He depicts different Copenhageners: a couple of well-dressed ladies who are buying flowers from the flower sellers from Amager, a woman who comes walking with two baskets full of goods, an elegant gentleman on a bicycle and a man selling bananas from a cart. Incidentally, it was the year after that Josefine Baker outraged quite a few Copenhageners when she appeared in a banana skirt.*

*DKK 500,000–600,000 / € 67,000–80,500*





123

**123**  
**A. RIIS CARSTENSEN**

b. Sennels near Thisted 1844, d. Helsingør 1906

View from Appat, Greenland, with inuits in kayaks. Signed A. Riis Carstensen. Oil on canvas. 76 x 110 cm.

*Provenance: Bruun Rasmussen auction 123, 1960 no. 56. Bruun Rasmussen auction 1415, 2014 no. 3.*

*Appat is an island in the Disko Bay in West Greenland. The colony Ritenbenk was established on the island in 1755. The island has been uninhabited since 1960.*

*DKK 30,000–40,000 / € 4,050–5,400*



124



**124**  
**CARL LOCHER**

b. Flensburg 1851, d. Skagen 1915

View from Cape North, Iceland, from the Royal Danish Journey of 1907 with the steamship "S/S Birma". Signed and dated Carl Locher Cap Nord, 12 August 1907. Oil on canvas. 82 x 132 cm.

*Provenance: King Christian X (1870–1947) and Queen Alexandrine of Denmark (1879–1952); then their son and daughter-in-law, Hereditary Prince Knud (1900–1976) and Hereditary Princess Caroline-Mathilde of Denmark (1912–1995); thereafter their son, His Excellency Ingolf Count of Rosenborg (b. 1940) until today.*

*Carl Locher was chosen as the official painter to depict the Royal Journey of 1907 ("Kongerejsen 1907") to the Faroe Islands and Iceland with the participation of, among others, King Frederik VIII of Denmark and his son, Crown Prince Christian (X) of Denmark. Depicted in the middle of the present painting is the white-painted steamship "S/S Birma" from the Danish East Asiatic Company. On the occasion of the voyage, "S/S Birma" was lent to the Danish Royal family as a royal ship.*

*DKK 80,000–100,000 / € 11,000–13,500*



125

**125**  
**PEDER MØNSTED**

b. Grenaa 1859, d. Fredensborg 1941

Summer evening at Ullerød. Signed and dated P. Mønsted Ullerød 1910. Oil on canvas. 50 x 37 cm. DKK 30,000–40,000 / € 4,050–5,400

**126**  
**ANTON MELBYE**

b. Copenhagen 1818, d. Paris 1875

A capsized ship at sea at sunset. Signed and dated Anton Melbye 1860. Oil on canvas. 34 x 48 cm. DKK 30,000–40,000 / € 4,050–5,400

**127**  
**CARL LOCHER**

b. Flensburg 1851, d. Skagen 1915

Fishing boats and sailing ships off Skagen by night. Signed and dated Carl Locher Skagen 74. Oil on canvas. 28 x 36 cm.

DKK 25,000–30,000 / € 3,350–4,050

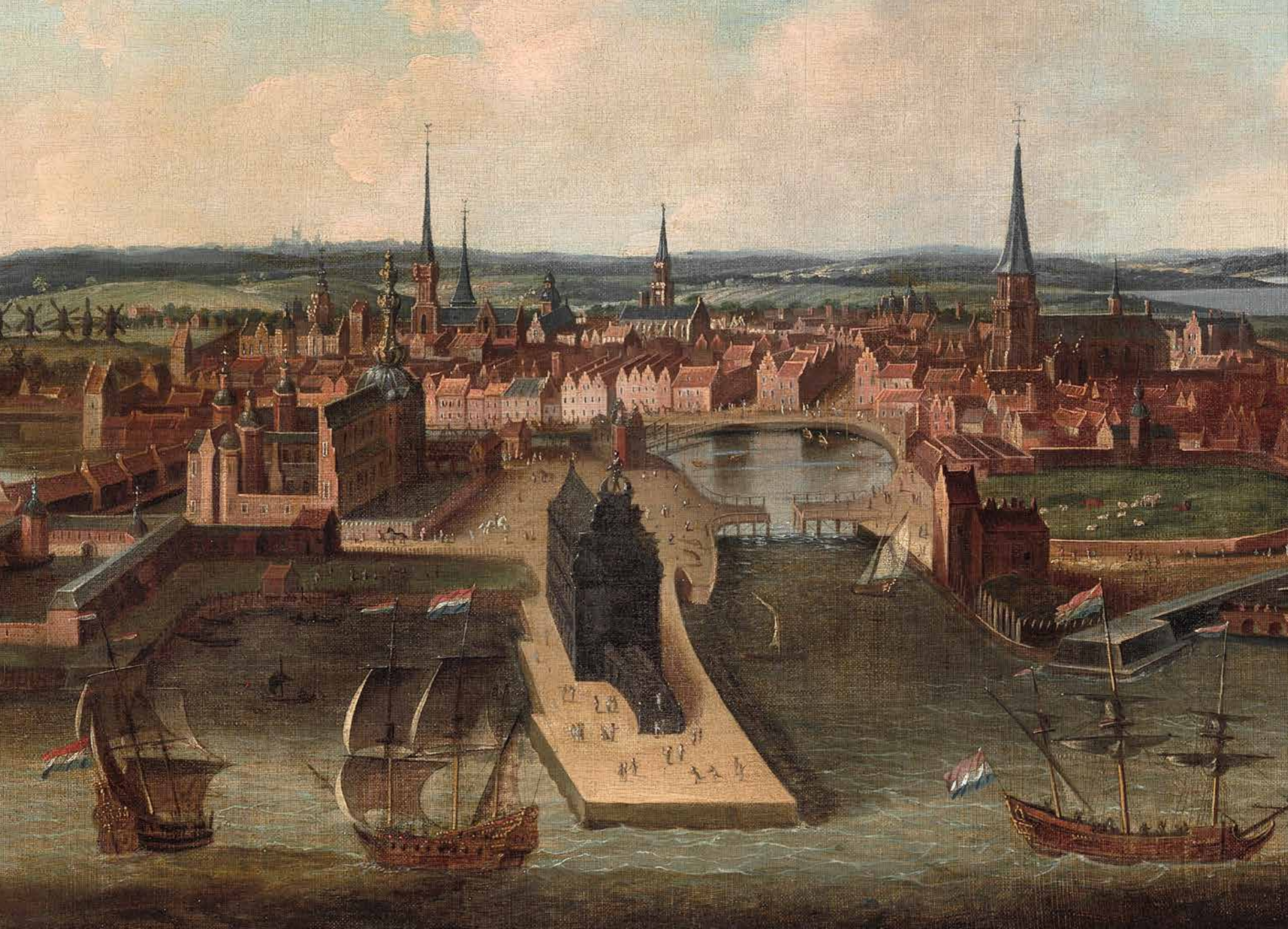


126



127





128

**DUTCH PAINTER, 17TH CENTURY**

View of Copenhagen c. 1650. Unsigned. Oil on canvas. 73 x 110 cm.

Several early prospects of Copenhagen reproduced as engravings are known. The earliest one "København set fra landsiden" (Copenhagen seen from the landside") is by Hans Knieper dated 1587.

Another example is Jan van Wijk's painting from 1611, where the city is seen from an imaginary point above Amager. It hung in Copenhagen's City Hall and was destroyed by fire in 1728. The painting is known from an engraving with the title "HAFNIA METROPOLIS ET PORTUS CELEBERRIMUS DANIA": "København, Danmarks hovedstad og mest berømte havn" (Copenhagen, Denmark's capital and most famous port). Here, several of the city's significant buildings, e.g. Copenhagen Castle, Tøjhuset (the Arsenal) and Provianthuset (the Victualling House), which Christian IV had built, can be seen. In the present Copenhagen City Hall, which was inaugurated in 1905, a wall is adorned with a painting, the basis of which is the above mentioned engraving.

In John Erichsen's exhibition catalogue from Copenhagen City Museum, "Københavnske motiver 1587-1807" (Copenhagen motifs 1587-1807) from 1974, an etching is reproduced (cat. no. 6) and described as follows: "et ukendt blad kopieret 1642 efter van Wick med tilføjelse af Børsen" (an unknown sheet copied in 1642 after van Wijk with the addition of the Stock Exchange). This could be the source for the present painting.

Clement de Jonghe's engraving COPPEN-HAVEN also has points of similarity with the present painting. At the front, almost in the middle "Børsen" (the Stock Exchange) can be seen, which is one of Copenhagen's oldest buildings, built by the harbour at the end of the Castle Square on land surrounded by water on three sides. Below Børsen a bridge leads out into nothing! The construction of Børsen took place from 1619 to 1640. To the left of Børsen, you can see Copenhagen Castle and behind it Vor Frue Church (the Church of Our Lady) with the Gothic tower, lost in the Copenhagen fire in 1728.

Clement/Clemendt de Jongh/longhe (1624/25-1677) was one of the largest print and map dealers and publishers in Amsterdam. He was active from about 1647 until his death. (He is known from a famous engraving by Rembrandt). De Jonghe gives a colourful description of Copenhagen under his copper engraving COPPEN-HAVEN in French, Dutch and, as here, in Latin, see next page.

The painting does not give a true picture of how Copenhagen looked like in the 17th century. The artist has found inspiration in contemporary pieces and has added something and removed something.

We are grateful to "Latinskolen" (the Latin school) in Gentofte for the translation of the Latin text.

DKK 200,000-300,000 / € 27,000-40,500



128

*Hafnia delitium Borealis nobile Mundi,  
Terrarum fidus, Regis alumna Domus.  
Regia Neptuni, Themidos laudabile Templum  
Mercurii statio Martis et Artis amor  
Urbs peramoena situ formosa, et commoda victu,  
Quam nisi sit stupidus visere quisque velit  
Singula quæ si non hac videris urbe viator  
Ne cuiquam dicas Hafnia visa mihi est.*

*Copenhagen, the noble joy of the Nordics,  
The kingdom's ornament, the king's home.  
Neptune's abode, Themis's praiseworthy temple,  
Mercury's anchorage, the lover of Mars and the arts,  
The beautiful city and place with a pleasant life.  
Anyone who is not ungifted should wish to visit.  
You traveler, if you do not see every corner of this city,  
You cannot claim: "I've seen Copenhagen."*



129

**129**  
**CARL HOLSØE**

b. Aarhus 1863, d. Asserbo 1935

Interior with the artist's wife at her needlework. Signed C. Holsøe.  
Oil on panel. 56 x 62 cm. DKK 125,000–150,000 / € 17,000–20,000



130

**130**  
**CARL HOLSØE**

b. Aarhus 1863, d. Asserbo 1935

Interior from a living room with the artist's wife. Sunlight through the window  
in the adjoining room. Signed C. Holsøe. Oil on panel. 56 x 50 cm.  
*Provenance: Bruun Rasmussen auction 608, 1995 no. 2, ill. p. 10.*

*On the reverse a stamp from art dealer Georg Kleis.*

*DKK 150,000–200,000 / € 20,000–27,000*



131

131  
ALEXANDER COOSEMANS

b. Antwerp 1627, d. s.p. 1689

"Et Porcelænsfad med Vindruer, Ferskener og Figen er saa skødesløst sat op mod et Par Meloner, at Valnødder og Oranger trille ud paa Jorden. Paa den anden Side af Fadet staar en Sølvpokal i Form af en Muslingskal med en drikkende Panfigur til Hank". A lavish still life of grapes, peaches, figs, melons, oranges, walnuts, a Dutch Delft blue and white bowl and a silver goblet. Bears the signature A. Coosemans. Oil on canvas. 58 x 83 cm.

*Exhibited: The National Gallery of Denmark, "Ældre Udenlandske Malerier fra Privateje", 1946 no. 30. Kunstforeningen, "Hollandske og flamske stilleben fra 1600-tallet i dansk eje", 1965 no. 25.*

*Provenance: A. G. Moltke's collection. Sold by F. C. Moltke at Winkel & Magnussen auction 96, 1931 no. 20. Here acquired by merchant Stanley Burmeister (1887-1963). Thence by descent in his family until today.*

*DKK 150,000-200,000 / € 20,000-27,000*



132

**GIUSEPPE ARCIMBOLDO, CIRCLE OF, 17TH CENTURY**

Allegory of summer. Unsigned. Oil on canvas. 93 x 72 cm.

Literature: Francine-Claire Legrand and Félix Sluys, "Giuseppe Arcimboldo et les arcimbolques", Aalter 1955, mentioned p. 88 and p. 267, no. 31. Ill. plate 31. The book is enclosed.

Provenance: The Anfusio Collection, Rome (1955). Koller Auctions, Zürich, Sept. 2007 no. 3074. Apollo to Apollo Collection by Henrik Bo Andersen.

The Italian mannerist Arcimboldo (1527-1593) is especially known for his bizarre and illusionistic "composite heads"; portraits where human faces and bodies are made up of figures such as flowers, plants, fruits, and tools, etc.

Arcimboldo enjoyed great recognition for his imaginative art in his time, and he served as court painter for Maximilian II, Holy Roman Emperor. In the centuries after his death, however, he fell into oblivion and was only rediscovered in the beginning of the 20th century, by the Surrealists among others, who considered him a great source of inspiration and a forerunner of modern art. In 1936 his works were included in the famous exhibition "Fantastic Art, Dada, Surrealism" at MoMA in New York.

Arcimboldo's series "The Four Seasons", consisting of four allegorical portraits, each depicting a different season through the vegetation of the season in question, became among his most popular "composite heads". The series was repeated and copied by him and his workshop several times, and several of his students executed paintings in his style in the years following his death.

According to "Giuseppe Arcimboldo et les arcimbolques", the present painting presumably belongs to a series of four season paintings, of which winter is in the Toeplitz Collection in Rome, autumn in the Buzzi Collection in Milan, and spring at Castello Sforzesco also in Milan.

The present painting is an allegory of summer and depicts a person in profile through the fruits of the summer and the harvest; torso and face thus consist of pears, plums, apples and quinces, among other things, while a squash forms the arm that carries the open, ripe melons. The head wears a wreath of ears of corn.

The painting has been examined at Statens Museum for Kunst (The National Gallery of Denmark) in Copenhagen. From analyses of the canvas and the type and colour of the priming, one can conclude that the work was painted in the 17th century, possibly in Italy.

DKK 200,000-300,000 / € 27,000-40,500



132



133

**133**  
**PAUL FISCHER**

b. Copenhagen 1860, d. Gentofte 1934

Winter day in Krystalgade, Copenhagen. In the background Rundetårn (The Round Tower). Signed Paul Fischer. Oil on canvas. 34 x 24.5 cm.

*DKK 30,000–40,000 / € 4,050–5,400*

**134**  
**PEDER MØNSTED**

b. Grenaa 1859, d. Fredensborg 1941

Danish harvest landscape. A young girl sits waiting in the grass by the side of the road while the hay is driven home. Signed and dated P. Mønsted Alling 1928. Oil on canvas. 35 x 50 cm.

*DKK 30,000–40,000 / € 4,050–5,400*

**135**  
**H. A. BRENDKILDE**

b. Brændekilde 1857, d. Jyllinge 1942

A man and woman on a road on the outskirts of the village. Signed H. A. Brendekilde. Oil on canvas. 48 x 74 cm.

*DKK 30,000–40,000 / € 4,050–5,400*



134



135



136

**136**  
**CHRISTIAN MØLSTED**

b. Dragør 1862, d. s.p. 1930

"Eng med piletræer. Dragør". A meadow with willow trees near Dragør. A young woman is sitting in the shade in the grass together with a little child. 1890s. Signed C. M. Oil on canvas. 60 x 88 cm. *Christian Mølsted is best known as a painter of marines, and he got his first inspiration and education from Dragør's self-taught ship draftsmen, the ship carpenter Peder N. Foss (1821-1882) and pilot Hendrik Pedersen Strømberg (1840-1916). As a draftsman and painter, Mølsted primarily found his motifs in and around his hometown Dragør's old houses, by the city's harbour and not least in the ship traffic on the approach between Dragør and Drogden. However, he also dealt with depictions of people, as in the present painting, where he has depicted a mother and a child sitting in the grass. Probably the artist's wife and child.*

*At Bruun Rasmussen auction 623, 1996 no. 235, a painting of the artist's daughter in a pink dress sitting in the grass, dated 1893, was sold; and at Bruun Rasmussen auction 776, 2007 no. 1449 ill. 202, "Coffee in the green" depicting young girls in Amager costumes enjoying coffee sitting under a shady tree, was sold. Both these paintings are related to the present painting in terms of style and motif.*

DKK 30,000-40,000 / € 4,050-5,400

**137**  
**PEDER MØNSTED**

b. Grenaa 1859, d. Fredensborg 1941

Summer landscape from Dollerup Bakker (hills) in Jutland, a woman is sitting at the roadside sewing. Signed and dated P. Mønsted 1913. Oil on canvas. 32 x 52 cm.

*Provenance: Bruun Rasmussen auction 393, 1979 no. 293, ill. p. 57.*

DKK 40,000-60,000 / € 5,400-8,050



137

**138**  
**H. A. BRENDEKILDE**

b. Brændekilde 1857, d. Jyllinge 1942

View from a village with two women chatting by a doorway. Signed and dated H. A. Brendekilde 1909. Oil on canvas. 68 x 86 cm.

DKK 30,000-40,000 / € 4,050-5,400



138



139



139

## AGNES SLOTT-MØLLER

b. Copenhagen 1862, d. Løgismose Manor near Assens 1937

"Kong Valdemar Sejv ved Jagtmåltidet på Lyø". Valdemar II of Denmark (1170–1241) at the hunting dinner at Lyø. Study. Unsigned. Oil on canvas. Stamped on the reverse of the frame with the owners' crowned monogram of Christian X and Queen Alexandrine of Denmark. 55 x 131 cm.

Inscribed, presumably by the artist, on the stretcher: "Beg. at male 17/10 22" (Start[ed] to paint 17/10 22).

Provenance: Agnes and Harald Slott-Møller's painting auction, Charlottenborg 22 October 1929, no. 36, ill. p. 5. Later King Christian X (1870–1947) and Queen Alexandrine of Denmark (1879–1952), Christian VIII's Palace at Amalienborg; hereafter their son and daughter-in-law, Hereditary Prince Knud (1900–1976) and Hereditary Princess Caroline-Mathilde of Denmark (1912–1995), Christian VIII's Palace at Amalienborg; thereafter their son, His Excellency Ingolf Count of Rosenborg (b. 1940) until today.

Agnes Slott-Møller's interest in Danish myths and legends nurtured her circle of motifs. The present painting is a study for the painting "Kong Valdemar med sin Søn ved Jagtmåltidet på Lyø i Maj 1223" (Valdemar II of Denmark with his son at the hunting dinner at Lyø in May 1223), (1927, oil on canvas, 172 x 390 cm), which is located at Nyborg Castle. This larger painting is part of a series of six monumental paintings depicting the life of King Valdemar II of Denmark, also called Valdemar the Victorious, based on the old folk songs about the king. Slott-Møller worked on the series in the period 1927–34. Today, four of the six paintings are hanging in Nyborg Castle.

Valdemar II, who was King of Denmark 1202–41, and his son Valdemar the Young were lured into an ambush during a hunting party on the Danish island of Lyø in May 1223 and abducted by Henry I, Count of Schwerin, who had become a victim of Valdemar's many conquests in Northern Germany. Valdemar and his son were held captive in Brandenburg and later Dannenberg as well as Schwerin until 1225, when they were released in return for a large ransom and a settlement for the relinquishment of most of Valdemar's conquered North German territories.

The painting, for which the present work is a preliminary work, depicts the hunting meal before the abduction. Iben Overgaard describes the painting as follows (in Danish): "[...] the King sits high above the others, and to his right his first-born son, Valdemar the Young, a blond youth, looks up at him with admiration. The hunting falcon is placed on the son's shoulder to symbolize the hunt that has just ended. [...] On the left sits Henry I, Count of Schwerin, also called Black Henry, scowling at the king. Agnes Slott-Møller has constructed the picture very similar to The Last Supper painted by numerous artists, with Leonardo da Vinci's version being a clear source of inspiration. There is thus no doubt about the grandiose intentions and Agnes Slott-Møller's reading of the event's significance for history." (Skovgaardmuseet, Odense Bys Museer, Vejen Kunstmuseum & Øregaard Museum, "Agnes Slott-Møller. Skønhed er til evig glæde", 2008, p. 49).

DKK 80,000–100,000 / € 11,000–13,500



140

**BERTHA WEGMANN**

b. Soglio, Switzerland 1847, d. Copenhagen 1926

The artist's self-portrait. Signed B. Wegmann. Oil on canvas. 46 x 37 cm.

*Bertha Wegmann's large-scale production included both genre paintings, landscapes, interiors, and still lifes, but she also became one of the most prominent and sought-after portrait painters of her time. In addition to portraying her family and loved ones, she made numerous portraits commissioned by the cultural and economic elite. She also made a number of self-portraits, and the present painting is a rare example of an early self-portrait by the artist.*



Photo: Royal Danish Library

*Wegmann has depicted herself in a half-length portrait, with an intense look at the viewer, and with a slightly turned head, which creates a significant light and shadow effect on the face. The self-portrait is painted with fast and virtuoso brushwork. While the focus is on the face itself, the background is loosely defined by visible brushstrokes applied quickly in many directions, so that she appears as if caught in a fleeting moment.*

*The painting is presumably from the same period as, or slightly later than, a photograph, which, however, is not dated. It shows a young Wegmann with the same hairstyle, black dress and with the characteristic strong jaw and small dimple in the chin.*

*The dark colours could indicate that the self-portrait was made during her time in Munich, where she moved to in 1867 and stayed for the following 13 years in order to further her education and develop herself as an artist. Here, she became, among other things, influenced by the German style of painting and slightly heavy palette. However, the strong light in the background and the loose brushstrokes may point in the direction that it was painted a little later, since Wegmann had several study trips and longer stays in Paris from 1879 and up through the 1880s, where she was influenced by French Naturalism and Impressionism.*

DKK 300,000–350,000 / € 40,500–47,000





141

**141**  
**ANNA SYBERG, ATTRIBUTED TO**

b. Faaborg 1870, d. Copenhagen 1914

"Markskel". Field boundary. In the foreground hogweed (bjørneklo), ground elders (skvalderkål) and grasses. In the background a fence and fields. Unsigned. Watercolour on paper. 92 x 75 cm.

*Exhibited: Faaborg Museum, "Anna Syberg - Øjeblikkets skønhed" (Anna Syberg - The beauty of the moment), 2022 no. 68, as attributed to Anna Syberg. Illustrated in the catalogue p. 105.*

*The watercolour is of very high quality and very close to Anna Syberg's works. It is difficult to imagine anyone other than Anna Syberg as the artist of this fine work.*

*DKK 30,000-40,000 / € 4,050-5,400*

**142**  
**BERTHA WEGMANN**

b. Soglio, Switzerland 1847, d. Copenhagen 1926

"Vidjekurv med kastanjegren". Still life with a basket with branches from a chestnut tree. Signed B. Wegmann. Oil on canvas. 69 x 60 cm.

*Exhibited: Charlottenborg, "Bertha Wegmanns Mindeudstilling", October 1926 no. 281b.*

*Provenance: Merchant Lund (1926).*

*DKK 60,000-80,000 / € 8,050-11,000*



142



143

**143**  
**BERTHA WEGMANN**

b. Soglio, Switzerland 1847, d. Copenhagen 1926

Interior from a workshop with a working table and a cloth hanging to dry over a woodburning stove. Signed B. Wegmann. Oil on canvas. 85 x 69 cm.

*Provenance: Winkel & Magnussen auction 370, 1952 no. 266. DKK 50,000-60,000 / € 6,700-8,050*



144

144

**BERTHA WEGMANN**

b. Soglio, Switzerland 1847, d. Copenhagen 1926

Portrait of the composer P. E. Lange-Müller (1850-1926) at the piano. 1909. Signed B. Wegmann. Oil on canvas. 87 x 71 cm.

Exhibited: Charlottenborg, "Bertha Wegmanns Mind-eudstilling", October 1926 no. 228.

Provenance: M. and V. Lange-Müller (1926).

The present painting is a repetition of a portrait of P. E. Lange-Müller from 1908 located at the Museum of National History at Frederiksborg Castle. Wegmann made the repetition for the Lange-Müller family.

The painting previously hung at Sophienberg castle in Hørsholm, North Zealand, which P. E. Lange-Müller and his wife Ruth owned from 1897 to 1922, and in the Lange-Müller family's possession until 1986.

The composer Lange-Müller wrote both symphonies, orchestral pieces, serenades, and more than 200 songs. Well-known is the music for Holger Drachmann's "Der var engang" (Once upon a time), which includes "Midsommervisen" (the Midsummer Song), renowned by most Danes. DKK 40,000-50,000 / € 5,400-6,700



145

145

**BERTHA WEGMANN**

b. Soglio, Switzerland 1847, d. Copenhagen 1926

Portrait of a woman with pearl earrings holding a pair of pince-nez. Signed and dated B. Wegmann 1920. Oil on canvas. 110 x 115 cm.

Exhibited: Charlottenborg 1921 no. 669, here as "Dameportræt. Knæstykke" (Portrait of a lady. Three-quarter length).

On the stretcher inscribed "Kirsten Gudny Prior". It could be the name of the person portrayed.

Provenance: H. P. Prior (1921); presumably Hans Peter Prior (1866-1936).

DKK 50,000-60,000 / € 6,700-8,050



146

146

**ELISABETH JERICHAU BAUMANN**

b. Warsaw 1819, d. Copenhagen 1881

A poor Roman boy. Signed and dated Elisabeth Jerichau Roma 1879. Oil on canvas. 50 x 62 cm.

*Throughout her life, Elisabeth Jerichau Baumann was concerned with social inequality and injustice, and she thus depicted the harsh conditions of life of poor people in several works. In the 1860s and early 1870s, she found models for her depictions of orphans among the children at the orphanage 'The Foundling Hospital' in London. During her stays in Italy, where she traveled to several times, she also painted beggars and miserable children on the street with great empathy and compassion.*

*DKK 60,000–70,000 / € 8,050–9,400*



147

147

**BERTHA WEGMANN**

b. Soglio, Switzerland 1847, d. Copenhagen 1926

Portrait of a young woman seen in profile. Signed B. Wegmann. Oil on canvas. 43 x 36 cm.

*DKK 40,000–60,000 / € 5,400–8,050*



148

**148**  
**WENZEL TORNØE**

b. Svendborg 1844, d. Frederiksberg 1907

"Fra en Systue". Interior from a sewing room with dressmakers having a lunch break. Signed and dated Wenzel Tornøe 1885. Oil on canvas. 90 x 108 cm.

Exhibited: Charlottenborg 1885 no. 404.

DKK 40,000–60,000 / € 5,400–8,050



149

**149**  
**MICHAEL ANCHER**

b. Bornholm 1849, d. Skagen 1927

Portrait of Anna Brøndum (1859–1935). 1878–1879. Signed M. A. Oil on canvas. 20 x 18.5 cm. Michael Ancher visited Skagen for the first time in 1874, where he stayed at Brøndum's Hotel. He quickly got a good eye for Anna Brøndum and they soon became each other's confidants. The oldest preserved letter between Anna and Michael can be dated back to 17 January 1875. The present painting is dated c. 1878–1879.

Literature: Elisabeth Fabritius, "Anna og Michael Ancher. Breve og fotografier", 2018, vol. I, letter 42 from ultimo September 1875, where Michael Ancher writes about his meeting with Anna in a letter to her (in Danish): "Speaking of yourself, you know that we found you here like a beautiful piece of treasure that had been cast upon the barren, deserted beach of Thule. You were, and still are, to use our old saying, a child of the open fields, fresh just like the nature you grew up in – and so is your view on life. That is what constitutes the cornerstone of your artistic endowment, and if only you could preserve this fresh and fine feeling, as true and beautiful as it is now, then nothing will be left wanting".

Michael and Anna got married in Skagen Church on 18 August 1880 on Anna's birthday.

DKK 30,000–40,000 / € 4,050–5,400



150

150

**KNUD LARSEN**

b. Vinderød 1865, d. Frederiksberg 1922

"Unge Piger ved Stranden". Young girls on the beach. Signed and dated Knud Larsen 1911-12. Oil on canvas. 80 x 112 cm.

Exhibited: Presumably at Charlottenborg 1912 no. 331.

"Weilbachs Dansk Kunstnerleksikon", 1996, vol. 5, p. 30 mentions Knud Larsen's sources of inspiration (in Danish): "In his Jutland landscapes one finds traces of both Hans Smidth's and Vilhelm Kyhn's colour scheme, while in the genre paintings like "Sommer. Børnene binder Kranse", he uses lighter colours and an almost impressionistic light that indicates the influence of P. S. Krøyer and Theodor Philipsen". This is also valid for this painting, where Vilhelm Kyhn's and P. S. Krøyer's influence is obvious.

DKK 30,000-40,000 / € 4,050-5,400



151

151

**CARL THOMSEN**

b. Copenhagen 1847, d. s.p. 1912

"I en Have". In a garden. A woman in a lilac coloured dress is picking flowers. Signed with monogram and dated 1900. Oil on canvas. 50 x 34 cm.

Exhibited: Charlottenborg 1901 no. 446.

DKK 40,000-50,000 / € 5,400-6,700



152

**152**  
**PAUL FISCHER**

b. Copenhagen 1860, d. Gentofte 1934

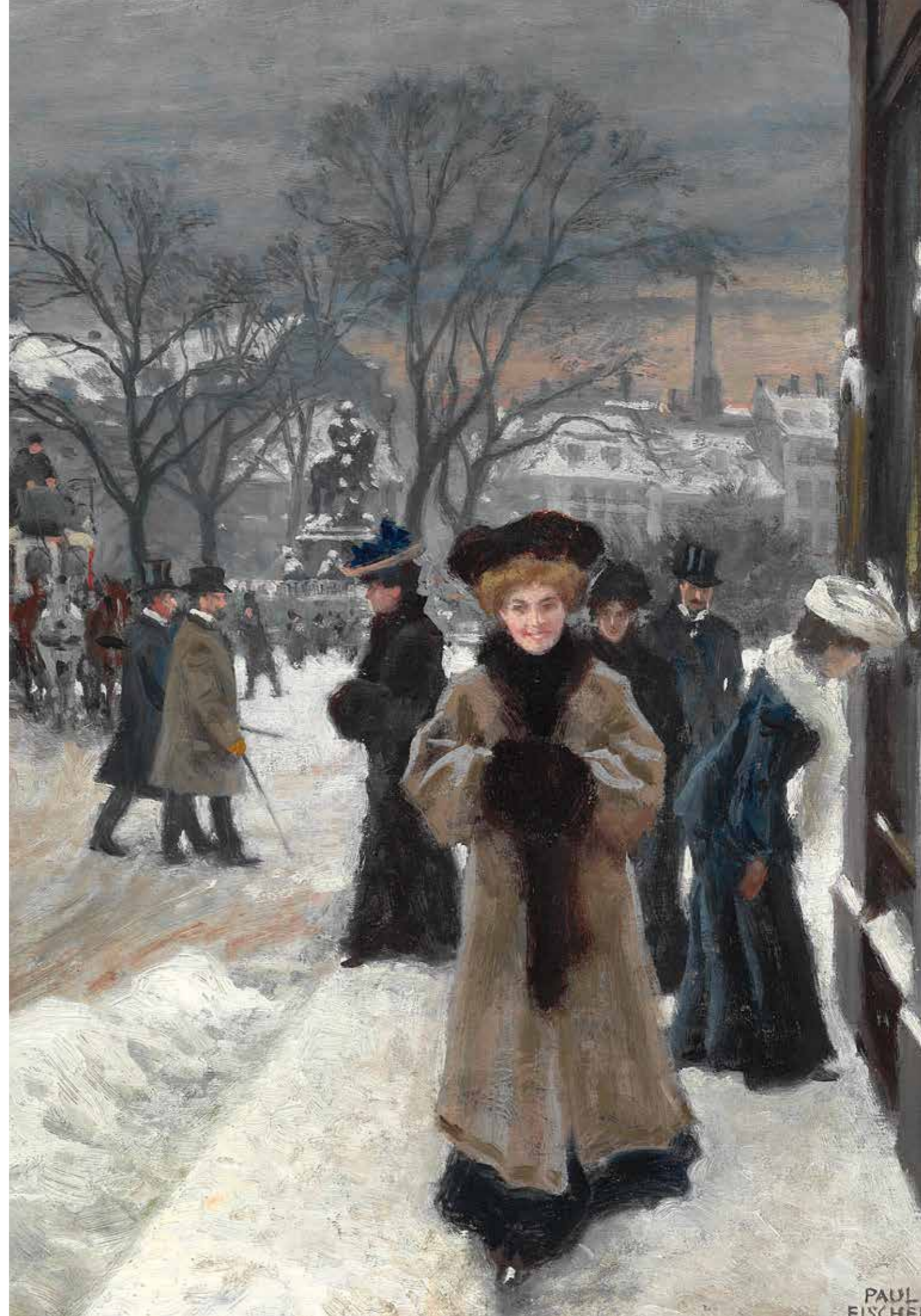
Winter day at Østergade, Copenhagen, seen towards Kongens Nytorv. In the foreground, the artist's wife dressed in a fur coat. In the background, a horse-drawn omnibus driving down Østergade. Signed and dated Paul Fischer 1907. Oil on panel. 35 x 53 cm.

Literature: Michael Varming, "Paul Fischers København - og vores", 2006, mentioned and ill. p. 10.

Jane Sandberg, "Paul Fischer - Ingen kan tjene alle til takke", 2005, ill. p. 26.

Paul Fischer has painted Copenhagen many times in all kinds of weather and he once said in an interview (in Danish): "I like Copenhagen best when the snow softens the contours or the light shines on the rain-soaked asphalt." (Jane Sandberg p. 28). The present painting is one of the finest examples of his skill. Through the bare trees around the Krinsen at Kongens Nytorv, the Thottske Palace (today the French embassy) can be seen as well as the equestrian statue of Christian V. The soft golden light of the setting sun illuminates the background.

DKK 800,000–1,000,000 / € 110,000–135,000





153

153

**ALBERT EDEL FELT**

b. Porvoo, Finland 1854, d. s.p. 1905

"Vid Seine". By the Seine. View from Vaux-sur-Seine, France. 1902. Unsigned. Drawing ink and watercolour on paper laid on paper. Sheet size 23 x 31 cm.

*Authenticated on the reverse by the artist's wife Anna Elise de la Chapelle (later von Born) (1857-1921): "Att denna tafla, "Vid Seine" år 1902 är målad av Albert Edelfelt intygar E. von Born." (E. von Born confirms that this painting, "By the Seine" 1902, was painted by Albert Edelfelt).*

*Vaux-sur-Seine is located northwest of Paris.*

*Provenance: The collection of art dealer Gösta Stenman, Inv. No. 3219. With a stamp from 'Stenmans Konstsalong' (Stenman's art salon) on the reverse.*

*DKK 20,000-25,000 / € 2,700-3,350*



154

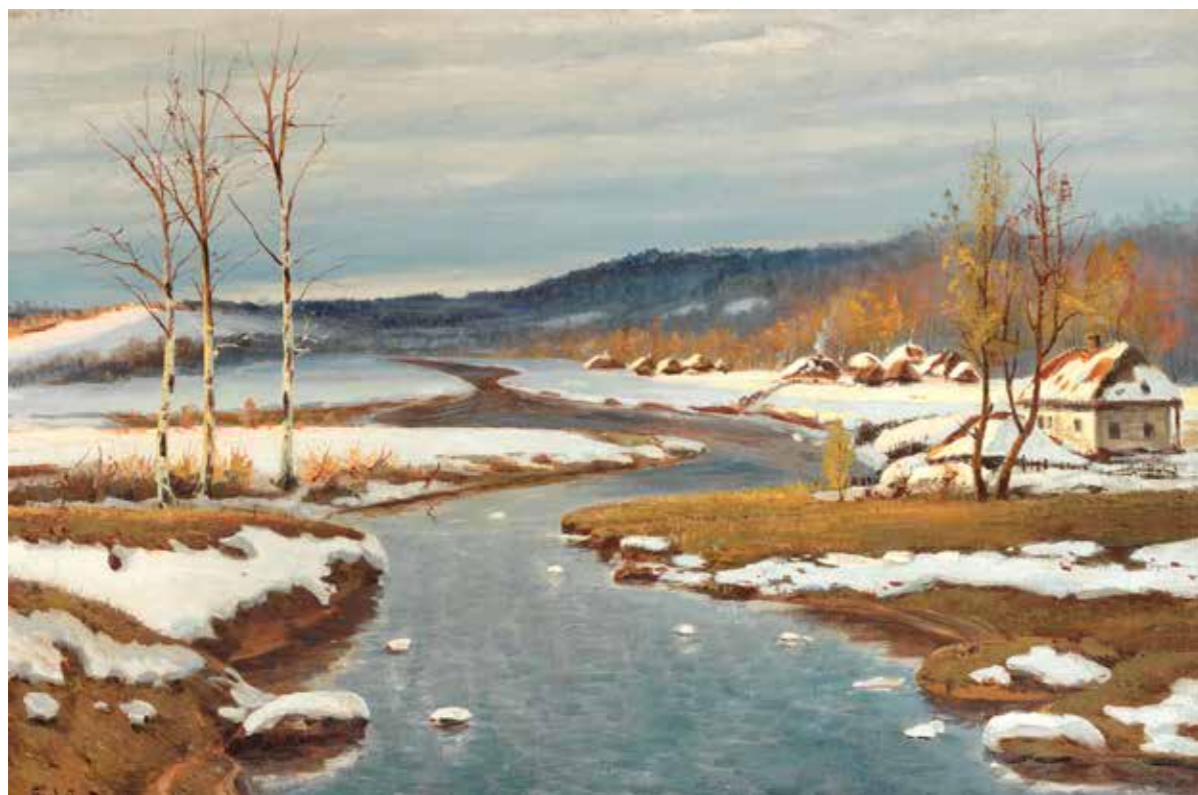
154

**NIELS HOLSØE**

b. Copenhagen 1865, d. Charlottenlund 1928

Interior with engravings on the walls, Thorvaldsen's figure "Cupid Triumphant, Examining His Arrow" on the chest of drawers, and sunlight on the door. Signed and dated Niels Holsøe 1910. Oil on panel. 60 x 45 cm. *DKK 50,000-60,000 / € 6,700-8,050*





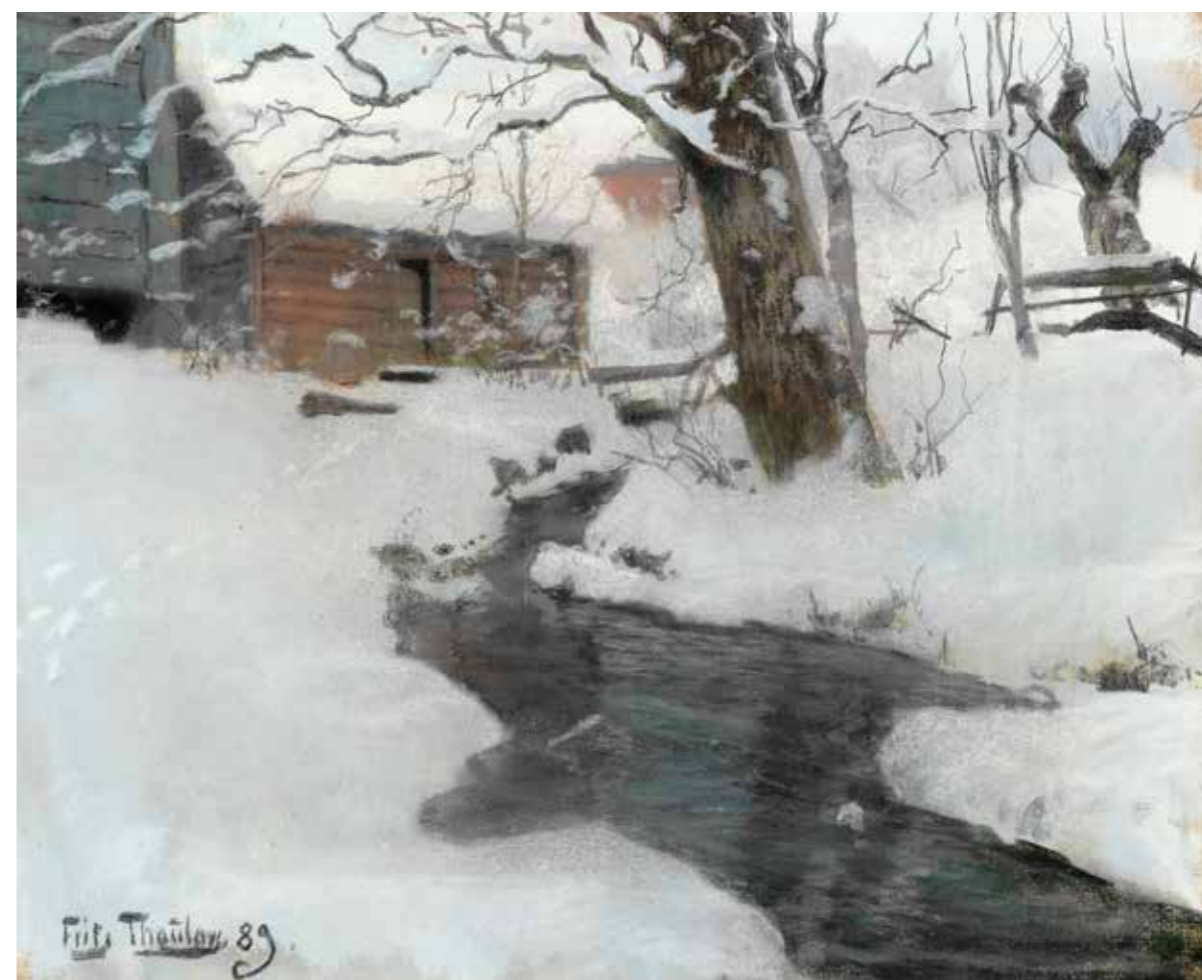
155

**155**  
**JAKOB IVANOVICH BROVAR**

b. Kapionovka near Kiev 1864, d. St. Petersburg 1941

Winter landscape by thaw. The river's water flows from the mountains in the distance past thatched houses and birch trees. Signed Brovar (in Cyrillic). Oil on canvas. 48 x 72 cm.

DKK 30,000–40,000 / € 4,050–5,400



156

**156**  
**FRITS THAULOW**

b. Oslo 1847, d. Volendam 1906

Winter landscape from the island Stord in Norway. Signed and dated Frits Thaulow 89. Pastel on canvas. 39 x 47 cm.

*Provenance: G. A. Hagemann (1877–1971), Bergsjöholm, Ystad. Thence by descent in his family until today.*

*Stord is a municipality in the county of Hordaland, Norway.*

*There are four known versions of this motif from Frits Thaulow's hand, i.a. Göteborgs Konstmuseum has a version (Inv. No. F 147).*

DKK 100,000–150,000 / € 13,500–20,000



157

**157  
PEDER MØNSTED**

b. Grenaa 1859, d. Fredensborg 1941

A little girl reading on the door steps of a cottage with a blooming garden. From Besser on the island Samsø. Signed and dated P. Mønsted 1919. Oil on canvas. 82 x 58 cm.

Provenance: Bruun Rasmussen auction 612, 1995 no. 73.

DKK 40,000–60,000 / € 5,400–8,050



158

**158  
FRITZ SYBERG**

b. Faaborg 1862, d. Kerteminde 1939

"Landskab - Uroligt vejr i Juli". Landscape in stormy weather in July. Signed with monogram and dated 1918–1926. Oil on canvas. 182 x 283 cm.

Exhibited: Den Frie Udstilling, "Fritz Syberg", 1937 no. 58.

*In "Fritz Syberg. Kunsten, naturen kærligheden", 1910, Erland Porsmose writes about Syberg's fascination with the effect of the wind on the grain's movements. "The magical swirling of the wind over the sea of grain and the alluring movement of the rye into the field of vision already captured Syberg in the years in Svanninge. At Pilegården he had time to await the return of the rye in the field and the appropriate weather, the color of the day - or rather Syberg had a number of versions of the same theme in progress adapted to different weather, light and color combinations" (p. 293). In the present painting you can feel "the whirlwind of the wind over the sea of grain".*

DKK 20,000–30,000 / € 2,700–4,050



159

159

**L. A. RING**

b. Ring 1854, d. Roskilde 1933

"Henad aften ved Terracina. Udsigt over havet til bjergene mod syd. Kvinder og børn på vejen bære vand fra kilden". Towards evening at Terracina, Italy. View of the sea towards the mountains to the south. Women and children on the road carrying water from the fountain. Signed and dated L. A. Ring Terracina September 1894. Oil on canvas. 61 x 96 cm.

*H. Chr. Christensen, A Catalogue Raisonné of the Works of L. A. Ring, 1910, no. 305.*

*Exhibited: Charlottenborg 1895 no. 507 (supplement). Kunstforeningen, "Arbejder af L. A. Ring", 1924 no. 99.*

*Literature: Peter Hertz, "L. A. Ring 1854–1933", 1934, illustrated p. 281 and mentioned p. 282 (in Danish): "Shortly before leaving Siena, Ring had begun plein air painting again in the two small sketches from the outskirts of the town, and this work in the open air Ring continues in a series of depictions from the beach at Terracina, of which the largest and most important is the evening painting from the road along the sea with women and children carrying water, a typical Italian motif."*

*Provenance: Auction, "Fortegnelse over malerier og keramiske arbejder af L. A. Ring, hvilke bortsælges ved Auktion", 1896 no. 21, here listed with the title "Vandbærersker, Terracina" (Water carrying women, Terracina). Paul Hagemann (1910, 1924). Bruun Rasmussen auction 330, 1975 no. 353, ill. p. 37. Bruun Rasmussen auction 873, 2017 no. 39, ill. p. 59.*

*Terracina is located in the Latina province c. 56 km south of Rome.*

DKK 75,000–100,000 / € 10,000–13,500



160

160

**KRISTIAN ZAHRTMANN**

b. Ronne 1843, d. Copenhagen 1917

"Leende Italienerinder. Tre Piger der gaa ned ad Civita d'Antinos Bytrappe". Italian girls laughing. Three girls walking down the village stairs of Civita d'Antino. Signed with monogram and dated 1890. Oil on canvas. 40 x 47 cm.

*H. Chr. Christensen, A Catalogue Raisonné of the Works of Kristian Zahrtmann, 1917, no. 365.*

*S. Danneskjold-Samsøe, A Catalogue Raisonné of the Works of Kristian Zahrtmann, 1942, no. 678, mentioned p. 280.*

*Exhibited: Charlottenborg 1890 no. 485. Kunstforeningen, "Civita d'Antino", 1908 no. 18. Kunstforeningen, "Civita d'Antino. Zahrtmanns by i Italien", 1989 no. 7, ill. p. 19.*

*Provenance: Countess A. Krag-Juel-Vind-Frijs (1908, 1917, 1942). The collection of director Hans Tobiesen, his auctions, part III, Winkel & Magnussen 388, 1954 no. 150, ill. p. 61. Bruun Rasmussen auction 500, 1987 no. 502, ill. p. 137.*

DKK 40,000–60,000 / € 5,400–8,050



161

161

**C. F. AAGAARD**

b. Odense 1833, d. Copenhagen 1895

"Klipper i en Bygmark. Optrækkende Bygevejr. Motiv fra Allinge paa Bornholm".  
Cliffs in a barley field. Rainy weather coming. View from Allinge, Bornholm.  
Signed and dated C. F. Aagaard 1887. Oil on canvas. 132 x 100 cm.

Exhibited: Charlottenborg 1887 no. 3. DKK 30,000–40,000 / € 4,050–5,400



162

162

**PEDER MØNSTED**

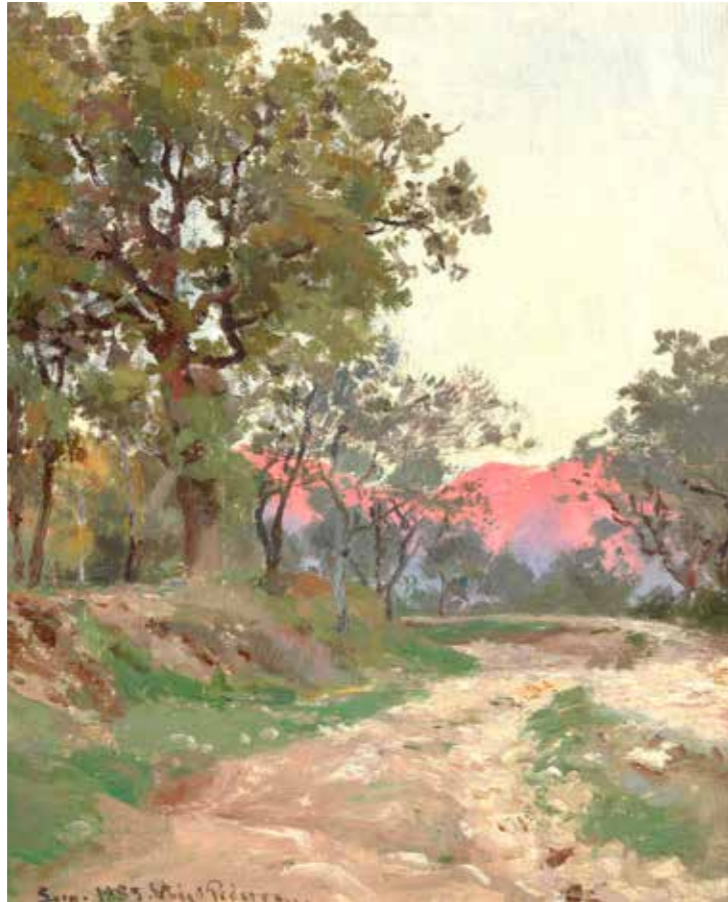
b. Grenaa 1859, d. Fredensborg 1941

"Klar Efteraarsdag ved Smedelinien". A clear autumn day at Smedelinien,  
Copenhagen. Signed and dated P. Mønsted Smedelinien 1937. Oil on canvas.  
70 x 50 cm.

Exhibited: Charlottenborg 1938 no. 388.

"Smedelinien" is located at Kastellet (The Citadel) by Grønningen and Esplanaden  
in Copenhagen and named after Smedehuset (the Smithy), which still exists.

DKK 50,000–60,000 / € 6,700–8,050



163

**163**  
**VIGGO PEDERSEN**

b. Copenhagen 1854, d. Roskilde 1926

"Vei til Pescosolido". The road to Pescosolido, Italy. Signed and dated Viggo Pedersen Sora 1883. Oil on canvas. 31 x 24 cm.

*Exhibited: Skovgaard Museet, Den Hirschsprungske Samling & Lillehammer Kunstmuseum, "In the Light of Italy", 2016-2017 no. 14, mentioned in the catalogue p. 156 and ill. p. 158. Here, the present painting is described as a study for the painting "Oktoberaften. Lige før Solens Nedgang. Paa Hjemvejen fra Møllen" (October evening. Right before sunset on the way home from the mill), which was exhibited at Charlottenborg 1884 no. 263, and today part of the Hirschsprung Collection (Inv. No. 3234).*

*Provenance: Kunsthallen auction 537, 2003 no. 530.*

*Pescosolido is a municipality in the province of Frosinone in the Italian region Lazio north west of Sora.*  
DKK 20,000-25,000 / € 2,700-3,350



164

**164**  
**WILHELM MARSTRAND**

b. Copenhagen 1810, d. s.p. 1873

Study from an Italian village in the mountains with a hunter returning with his prey, welcomed by a mother with a child. Unsigned. Oil on paper laid on board. 33 x 44 cm.

DKK 30,000-50,000 / € 4,050-6,700



**165**  
**JENS JUEL**

b. Balslev, Funen 1745, d. Copenhagen 1802

Portrait of Edel Sophie Sparre-Kaas (1746-1800), married in 1771 to Admiral Frederik Christian Kaas to Nedergård (1727-1804). Blue-green silk dress with bows and frills. Hair up high with pearls and lace handkerchief on top. Large pink pearls around the neck tied with a blue bow at the neck. Red drapery to the left in the background, dark greyish background. C. 1771 (the year of their marriage). Unsigned. Oil on canvas. 78 x 62 cm. Louis XVI frame.

*Ellen Poulsen, A Catalogue Raisonné of the Works of Jens Juel, 1991, no. 102, ill. p. 85 in colours.*

*Exhibited: Kunstforeningen, "Jens Juel. Malerier i privat eje", 1982 no. 15.*

*Literature: "Danmarks Adels Aarbog" (DAA), 1917, ill. "Danske Slotte og Herregårde", 3, 1943, mentioned and ill. p. 375. Leo Swane in: "Danmarks malerkunst", (ed. by Erik Zahle), 4th edition, 1956, ill. p. 117.*

*Provenance: Nedergård on Langeland, which was the Mur-Kaas family estate. The estate was bought in 1936 by merchant Stanley Burmeister (1887-1963), who sold the estate the following year, but kept several of the portraits, including this one. Thence by descent in his family until today.*

*DKK 150,000-200,000 / € 20,000-27,000*



165



166

**166**  
**JENS JUEL**

b. Balslev, Funen 1745, d. Copenhagen 1802

"Landskab fra Schweiz. Creux de Genthod". Landscape from Switzerland. Creux de Genthod. 1780s. Unsigned. Oil on panel. 29 x 41 cm.

*Ellen Poulsen, A Catalogue Raisonné of the Works of Jens Juel, 1991, no. 467, ill. vol. II, p. 294. She refers to the painting as (in Danish): "a very fine painting with mild gentle colours matching the idyllic motif."*

*Exhibited: Kunstforeningen, "En Samling af Jens Juels Malerier, Tegninger og Kobbere", 1828 no. 94, belonging to J. F. Clemens.*

*Kunstakademiets Udstilling, 1852 no. 120 or 121, belonging to conference councillor Koch (1787-1860). Both described as "Landscape".*

*Nordisk Industri-og Kunstudstilling, 1872-1873 no. 16 or 17, lent for the exhibition by Mrs Koch, married to the deceased conference councillor Koch.*

*Kunstforeningen, "Jens Juels works", 1909 no. 155, belonging to widow M. Koch.*

*Provenance: Engraver J. F. Clemens. His auction 1832 no. 15, bought by conference councillor Jørgen Hansen Koch (his name is on the stretcher). Kunsthallen, Copenhagen, 9 September 1998 no. 19, ill. p. 9. DKK 80,000-100,000 / € 11,000-13,500*



167

**167**  
**C. W. ECKERSBERG**

b. Bläkrog near Aabenraa 1783, d. Copenhagen 1853

View of Liselund. In the foreground two young women strolling in the garden of Liselund and a gardener with his tools over his shoulder. 1809. Unsigned. Oil on canvas. 33 x 36 cm. *Two paintings with this motif are known by C. W. Eckersberg. One dated E. 1809 and the present one a repetition by the painter's own hand.*

*In 1809, Christopher von Bülow commissioned a series of landscape paintings by Eckersberg. He wanted Eckersberg to paint the manor Nordfeld, which he owned, but also the surrounding landscape - including the Cliffs of Møn and as here Liselund.*

*It is uncertain how many paintings Eckersberg painted for Christopher von Bülow during and after his stay at Nordfeld, but the series of landscape paintings was Eckersberg's last large job before he in 1810 started to make preparations for his journey to Paris and Rome, not returning to Copenhagen until 1816. Two paintings from the Møn series are today in the Statens Museum for Kunst (The National Gallery of Denmark), "Prospekt af egnen ved Liselund på Møn" (View of a landscape near Liselund, Møn) (Inv. No. KMS7984) and "Landskab med stene, Møn" (Landscape with stiles, Møn) (Inv. No. KMS7694).*

*Provenance: Consul General Johan Hansen's collection no. 195 (1921); no. 309 (1927). Not his auctions. Sold between 1927 and 1930. Purchased in 1930 by master baker Reinhard von Hauen, whose stamped collector's mark with the date 1930 is found on the stretcher. Herholdt Jensen auction 5 December 1939, no. 22, ill. Office manager Vilhelm Berglind. Winkel & Magnussen auction 344, 1948 no. 374 with the title (in Danish) "Landskab from Møen, with Liselund Castle", ill. p. 33. DKK 300,000-500,000 / € 40,500-67,000*



168

168

**MARTINUS RØRBYE**

b. Drammen 1803, d. Copenhagen 1848

View from a village pond in Besser, Samsø. Unsigned. Oil on paper laid on canvas. 31 x 43 cm.  
*Provenance: Consul General Johan Hansen's collection no. 1473 (1927). Anton Hansen's Art Auctions 10 March 1931 no. 65.*

*Martinus Rørbye travelled to Samsø twice, in 1845 and in 1847, where he visited his wife Rose's sister Cathrine, who was married to the rural dean Fasting at Besser Church.*

DKK 40,000–60,000 / € 5,400–8,050

169

**P. C. SKOVGAARD**

b. Ringsted 1817, d. Copenhagen 1875

View towards Møns Klint (the Cliffs of Møn) with 'Taleren' seen from the beach. Study. Unsigned. Dated 12. Juni 1850. Oil on canvas. 35.5 x 44.5 cm.

*During Skovgaard's stay on Møn in June 1850, the artist maintained a lively correspondence with his future wife, Georgia Schouw. In his letters from Møn, the artist writes a lot about the weather, which in some cases keeps him from painting outside. Among other things, he writes on 11 June (the day before the present painting was created) (in Danish): "The weather has been rather unfavourable, but I can still use the time, and if the weather will just remain nice, then I hope to come home with a fine*



169

*result, otherwise it will only be so-so. I have seen several lovely motifs or images, but there has to be good weather for it to be possible. In this flickering sunlight everything looks trivial, but I use it to prime. In the morning I like to work on the Sommerspiret (the Summer Spire) and the Maglevands Fald (waterfall), and in the evening, I enjoy sitting under the Slotsgavlene cliff. If the weather permits it, I also feel like painting Vitmundsnakke." (Correspondence between P. C. Skovgaard and Georgia Schouw belonging to the Skovgaard Museum).*

*However, it does not seem as if a significant improvement in the weather takes place in the following days, and on Sunday 16 June he continues to write (in Danish): "The weather is like last night, and since it has been this way for a long time now, it is all a bit heavy to bear. It [has] only been really good weather in the morning on 3 June – not a single beautiful evening. I fear that it will prolong my stay here. However, it is not an option to go home with an unsolved challenge, and I think the weather will change for the better, it is after all the summer we are in [...]".*

*The many different sketches and studies that Skovgaard carried out from the beach at the Cliffs of Møn culminated in the monumental work "Parti fra Møns Klint" (View of the Cliffs of Møn) from 1852, which measures 126 x 190 cm and is located at Fuglsang Kunstmuseum (Inv. No. 2008/4), acquired at Bruun Rasmussen auction 795, 2008 no. 31 for a hammer price of DKK 800.000.*

DKK 60,000–80,000 / € 8,050–11,000





170

**170**  
**JØRGEN SONNE**

b. Birkerød 1801, d. Copenhagen 1890

"En Baad der er trukket op af Tiberen". A boat pulled up the Tiber. C. 1835. Unsigned. Oil on paper laid on cardboard. 20 x 37 cm.

*Jørgen Sonne spent 10 years in Rome in the 1830s and belonged to the circle of artists who flocked around the sculptor Bertel Thorvaldsen (1770–1844). Over the years, he sent paintings home to Charlottenborg for the yearly exhibitions. Numerous studies testify that he made many outings to the surroundings of Rome. The present study from the Tiber is one of these.*

DKK 20,000–30,000 / € 2,700–4,050

**171**  
**VILHELM KYHN**

b. Copenhagen 1819, d. Frederiksberg 1903

"Ved Solens Nedgang. Hammershus Slots Ruin". Sunset at Hammershus Castle Ruins. Unsigned. Inscribed with monogram on the stretcher. Oil on canvas. 43 x 64 cm.

*Hammershus Castle is the largest castle ruin in Northern Europe. Newer research and excavations from 2015 seem to prove the fact, that the castle was ready for use around the year 1300 and was built by Jens Grand (1260–1327) – Archbishop in Lund from 1289–1302. The fortress was built to consolidate control of the island and was the stronghold for various rulers.*

DKK 20,000–30,000 / € 2,700–4,050

**172**  
**EDVARD PETERSEN**

b. Copenhagen 1841, d. s.p. 1911

Interior from Basilica San Lorenzo fuori le mura in Rome. Signed and dated E. P. St. Lorentso fuori le mura Roma 1886. Oil on canvas. 81 x 118 cm.

*Exhibited: Charlottenborg 1887 no. 311. Charlottenborg, Foreningen for National Kunst, "Fortegnelse over Arbejder af Maleren, Professor Edvard Petersen", 1916 no. 238.*

*Provenance: Director A. Græbe (1916). Bruun Rasmussen auction 236, 1969 no. 193.*

DKK 25,000–30,000 / € 3,350–4,050



171



172



173

**173**  
**JØRGEN ROED, ATTRIBUTED TO (AFTER CHRISTEN KØBKE)**

b. Ringsted 1808, d. Copenhagen 1888

Portrait of the artist Wilhelm Bendz (1804-1832). Unsigned. Dated 1831. Oil on canvas. 25 x 21 cm.

*Exhibited: The Hirschsprung Collection, "Wilhelm Bendz - Et ungt kunstnerliv", 1996 no. 131.*

*Literature: Ejner Johansson, "Wilhelm Bendz", Spektrum Copenhagen 1995, mentioned pp. 94-95.*

*Ejner Johansson, "Christen Købkes portræt af Wilhelm Bendz" in the exhibition catalogue "Wilhelm Bendz - Et ungt kunstnerliv", The Hirschsprung Collection 1996, mentioned pp. 203 and 205, ill. p. 205.*

*Provenance: Just Thiele (1843-1916), son of the art historian Just Mathias Thiele (1795-1874). Thence by descent in the family. Søren Thiele Plum (1996).*

*The present painting is a copy after Christen Købke's portrait of Wilhelm Bendz, this one from around 1830 and part of the Hirschsprung Collection (Inv. No. 254). Købke (1810-1848) gave this painting to C. W. Eckersberg (1783-1853). In the catalogue for the exhibition "Wilhelm Bendz - Et ungt kunstnerliv" Ejner Johansson writes (in Danish): "We can determine with certainty when Eckersberg got the picture and where he got it from, because he noted it carefully in his diary. Under 22 January 1831, it says: "22. Saturday. Made a drawing for a painting. Købke brought a portrait of Bendz made by him. Roed borrowed it." One can then wonder why Jørgen Roed borrowed the painting. Presumably to copy it." (p. 203). DKK 60,000-80,000 / € 8,050-11,000*



174

**174**  
**WILHELM BENDZ**

b. Odense 1804, d. Vicenza 1832

Portrait of Anne Vincentine Raffenberg, née Kiaer (1776-1851) in a black dress and bonnet with laces. Unsigned. Oil on canvas. 16 x 13 cm.

*Exhibited: The Hirschsprung Collection, "Wilhelm Bendz - Et ungt kunstnerliv", 1996 no. 46, mentioned and ill. in the catalogue pp. 109-110.*

*Provenance: Just Thiele (1843-1916), son of the art historian Just Mathias Thiele (1795-1874). Thence by descent in the family. Søren Thiele Plum (1996).*

*Anne Vincentine Raffenberg was married to pastor Jørgen Raffenberg (1766-1812). Their children were Mads Emil Raffenberg (1804-1876), Bendz's close friend lawyer Michael Raffenberg (1802-1881) and Bendz' fiancé Marie Raffenberg (1811-1845).*

*DKK 20,000-25,000 / € 2,700-3,350*



175

**175**  
**JENS JUEL**

b. Balslev, Funen 1745, d. Copenhagen 1802

The artist's daughter Susanne Juel as a child. 1794. Unsigned. Bears the signature Jens Juel pinxit on the reverse. According to Ellen Poulsen the signature was presumably transferred from the old canvas. Oil on canvas laid on panel. 22 x 28 cm.

*Ellen Poulsen, A Catalogue Raisonné of the Works of Jens Juel, 1991, no. 637, ill. vol. II, p. 410.*

*Exhibited: Kunstforeningen, "Jens Juel - Malerier i privat eje", 1982 no. 56.*

*Literature: Henny Glarbo, Kunstmuseets Aarsskrift, XIII-XV, 1926-28, p. 212.*

*Provenance: Winkel & Magnussen auction 366, 1951 no. 18. Knud Thorballe and his family (1991), presumably acquired by him at the Winkel & Magnussen auction in 1951.*

*Susanne Juel (1793-1840), called Sanne, was married to the painter C. W. Eckersberg (1783-1853) in 1828, the year after her sister Julie (1791-1827), Eckersberg's second wife, had died. The National Gallery of Denmark owns a portrait by Eckersberg dated 1823 of Susanne Juel as a grown-up (Inv. No. KMS1775). DKK 50,000-75,000 / € 6,700-10,000*



176

**176**  
**DAVID MONIES**

b. Copenhagen 1812, d. Frederiksberg 1894

Portrait of Anny Christine Petrine Raffenberg, née Schierbeck (1813-1867) in evening gown, high-piled hair and pieces of jewellery. Unsigned. Oil on cardboard. 22 x 18 cm.

*Anny Christine Petrine Schierbeck married Mads Emil Raffenberg (1804-1876) in 1839. He was the brother of Michael Raffenberg (1802-1881) and Marie Raffenberg (1811-1845).*

*Provenance: Just Thiele (1843-1916), son of the art historian Just Mathias Thiele (1795-1874) and married to Malvina Frederikke Raffenberg (1848-1913), the daughter of Anny and Mads Emil Raffenberg. Thence by descent in his family. DKK 15,000-20,000 / € 2,000-2,700*

"Et stort skib under kalfatring ved Frederikshavn". A large ship under caulking at Frederikshavn. Signed and dated M. R. 1847. Oil on cardboard. 37 x 55 cm.

Thorvaldsens Museum, *A Catalogue Raisonné of the Works of Martinus Rørbye*, 1981, no. 241.

Exhibited: Kunstforeningen, "Fortegnelse over M. Rørbyes arbejder", 1905 no. 167.

Kunstforeningen, "Arbejder af M. Rørbye", 1930 no. 56.

"Udstillingen af dansk Malerkunst i Flensborg Bys Museum", 1948 no. 128.

"Akademiets jubilæum, Charlottenborg. Dansk kunst gennem 200 år. Maleri. Skulptur. Arkitektur. Grafik", 1954 no. 61.

Aarhus Kunstmuseum, "Jylland i dansk Kunst", 1956 no. 201, ill. 53.

Thorvaldsens Museum, "Martinus Rørbye 1803-1848", 1981 no. 142.

Literature: Eva Henschen, "Rørbye og Jylland" in the exhibition catalogue "Martinus Rørbye 1803-1848", Thorvaldsens Museum 1981, mentioned and ill. p. 201. Here, the painting is described as follows (in Danish): "Like a gigantic and powerless Gulliver surrounded by the little people, she lies here, Ann Sunderland. And on Skagen, Rørbye has painted her, whether he himself has thrown sand into the paint for effect, or the wind has blown it up on the canvas". Since the grains of sand are primarily located where the sandy beach actually is in the painting, could one not imagine that Rørbye himself placed the grains of sand in the wet paint?

Elisabeth Fabricius, "Martinus Rørbye og Skagen" in the exhibition catalogue "Martinus Rørbye. Det nære og det fjerne", Øregaard Museum, Skovgaard Museet, Nivaagaards Malerisamling & Ribe Kunstmuseum, 2014, mentioned p. 127, ill. p. 123, fig. 88.

Provenance: The estate auction of Martinus Rørbye 1849 no. 73. Chamberlain R. Krag (1905). Official in the government (ekspeditionssekretær) C. G. R. Fenger (1930, 1948, 1954, 1956).

Skagen is not just stormy weather with storms of hurricane-like force and strong fishermen going into lifeboats; but also warm quiet summer days on the beach, like here, where the fishermen work at the big ship hull "Ann Sunderland". The title indicates that the ship is under caulking, or explaining it in another way, that the ship is under sealing with material, consisting of scratched up rope or bluing. It has been pointed out that it cannot be the right description of what actually is going on. It is not likely that such a large hull would be placed on the beach to be sealed. It is more likely that the hull or wreck is in the process of being cut up for timber.



177

In the article "Martinus Rørbye og Skagen", Elisabeth Fabricius gives a detailed explanation of the motif. The schooner "Ann" of Sunderland was shipwrecked on Skagen Reef on 27 Nov. 1846. The ship's cargo of wheat was salvaged and sold during December. The wreck itself was sold on 31 December and towed away from Grenen and westwards. According to Elisabeth Fabritius, it was quite likely that Anna Ancher's maternal grandfather, nicknamed "Søren Møllebygger", was responsible for the dismantling.

He owned two sawmills and his accounts show that he had expenses related to the scrapping of the wreck in February and March 1847.



Photo: National Gallery of Denmark

An almost identical drawing, dated Skagen 1847, is at the National Gallery of Denmark (Inv. No. KKSgb6239). This drawing is currently exhibited at The Metropolitan Museum of Art, New York, "Beyond the Light", January 26 - April 16, 2023, and later at The J. Paul Getty Museum, Los Angeles, "Beyond the Light", May 23 - August 20, 2023, ill. p. 43 in the catalogue, fig. 23.

DKK 600,000-800,000 / € 80,500-110,000



178

**178**  
**DANKVART DREYER**

b. Assens 1816, d. Barløse 1852

"Udkanten af en skov". In the outskirts of a forest. Presumably painted in The Deer Park north of Copenhagen. Unsigned. Oil on cardboard. 33 x 48 cm.

*Sigurd Swane, A Catalogue Raisonné of the Works of Dankvart Dreyer, 1921, no. 151.*

*Suzanne Ludvigsen, A Catalogue Raisonné of the Works of Dankvart Dreyer, 2008, no. 180, ill. p. 82.*

*Exhibited: Kunstforeningen, "Dankvart Dreyers Arbejder", 1912 no. 62.*

*Literature: Leo Swane, "Dankvart Dreyer. 1816-1852", 1921 ill. p. 96. Kirstine and Hjalmar Bruhn, "Malerier, Tegninger, Kunstindustri, I-III", 1934-1954. III. vol. I.*

*Provenance: The artist's brother, vicar Jørgen Gantzel Blicher Dreyer, Ørsted; his son Councillor of State (etatsråd) Jørgen Christian Dreyer, Odense; his son Morten Christian Hempel Dreyer, Odense (1912, 1921); his auction, Odense 1934 no. 259; here bought by Hjalmar Bruhn.*

DKK 50,000-60,000 / € 6,700-8,050



179

**179**  
**FRITZ PETZHOLDT**

b. Copenhagen 1805, d. Patras 1838

"En Kulmile i Nærheden af Ilsenburg". A charcoal stack near Ilsenburg, Harz, Germany. 1829. Unsigned. Oil on canvas. 51 x 42 cm.

*Exhibited: Charlottenborg 1830 no. 66. Kunstforeningen, "Fritz Petzholdt 1805-1838", 1985 no. 26, mentioned pp. 7-8 in the catalogue.*

*A coal mile is a hemispherical, covered pile of wood for producing charcoal by incomplete combustion with reduced air supply.*

*Ilsenburg is a town in the Harz in Northern Germany, located in the northern part of the Harz at the entrance to the Ilse valley with the river Ilse.*

*In 1829, Petzholdt made a trip to the Harz as a foretaste of the big trip to Italy later on. He wanted to see "real" mountains and was inspired by Heinrich Heine's "Harzreise", which had been published shortly before. We know that Petzholdt and Heine met in Hamburg.*

DKK 30,000-40,000 / € 4,050-5,400



180

180

**FREDERIK ROHDE**

b. Copenhagen 1816, d. Frederiksberg 1886

View from Larsens Plads in Copenhagen. Signed F. R. 1835. Oil on canvas. 45 x 61 cm. Detailed scenes from Copenhagen such as the present painting were a typical motif for the Danish Golden Age painters, who studied the city's architecture, landscapes and harbours. Frederik Rohde has executed several such paintings and studies from Copenhagen.

Rohde studied at the Royal Academy of Fine Arts in Copenhagen in the years 1830-34 and was a student of J. L. Lund (1777-1867). He also received guidance from Heinrich Buntzen (1803-1892) and Christen Købke (1810-1848). During a stay in Munich in the 1840s, Rohde was strongly influenced by the romantic landscape painting and he especially practised winter landscapes throughout his further artistic career.

The Museum of Copenhagen has a drawing depicting Larsens Plads by Frederik Rohde, this one dated c. 1850 (Inv. No. 1935:082).

Larsens Plads is the area off Toldbodgade along the inner harbour in Copenhagen. It is named after the shipbuilder Lars Larsen (1758-1844), who in 1802 established a shipyard on the land where Amaliehaven is located today at Amalienborg Castle.

The warehouse in the background of the painting must be the old grain drying warehouse (Korn tørringsmagasinet), today the Admiral Hotel. DKK 60,000-80,000 / € 8,050-11,000



181

181

**WILHELM MARSTRAND**

b. Copenhagen 1810, d. s.p. 1873

"Fra Venedig. Aften". Brisk traffic on the Grand Canal after sunset. Unsigned. Oil on canvas. 29 x 54 cm.

Exhibited: Charlottenborg, "Kunstforeningens Marstrand Udstilling", 1898 no. 322 entitled "Aftenstudie fra Venedig. Udsigt mod Kirken St. Maria della Salute og Dogepaladset" (Evening study from Venice. View towards the Church of Santa Maria della Salute and the Doge's Palace), owned by mail clerk Just Wilde.

Literature: Kunst i Privat Eje, 1945, vol. II, ill. and mentioned pp. 136 and 137 (in Danish): "The fine small evening sketch from Venice shows Marstrand from his more lyrical side. The gentle evening atmosphere over the lagoon is beautifully rendered, and the gondolas draw their dark silhouettes with great effect against the blushing interplay of air and water".

Anne-Mette Villumsen, "Fra Italien med kærlighed" (From Italy with love) in "Wilhelm Marstrand. Den store fortæller", exhibition catalogue, 2020, mentioned and ill. p. 162. Here Villumsen writes among other things about the present painting (in Danish): "Marstrand may also have intended to make an over-door with a motif from Venice, because he also made an elongated motif in transverse format with a view over the city from the lagoon. Here, he chose to place three well-known buildings from Venice strategically: from the right the Doge's Palace with the campanile of St. Mark's Church, Santa Maria della Salute in the middle, and to the left the church of San Giorgio Maggiore. Both gondolas and sailing ships can be seen on the water" (p. 162). Villumsen continues by drawing an over-door painting by P. C. Skovgaard (1817-1875) into the description: "Like Skovgaard's painting [also ill. p. 162], the shortened gondolas on the water function as markers, which create depth in the image space, but they also help to clearly establish that the motif is from Venice" (p. 162).

Provenance: Mail clerk Just Wilde (1898). Mrs Ida Parnow (1945).

DKK 80,000-100,000 / € 11,000-13,500



182

182

**C. F. SØRENSEN**

b. Samsø 1818, d. Copenhagen 1879

"Fregatten 'Sjælland' ud for Capri i Middelhavet". The frigate 'Sjælland' off the coast of Capri in the Mediterranean. Signed and dated C. F. Sørensen 1867. Oil on canvas. 75 x 110 cm.

*Mona Christensen and Jan Faye, A Catalogue Raisonné of the Works of C. F. Sørensen, 1991, no. 543.*

*Provenance: Winkel & Magnussen 174, 1935 no. 290, ill. p. 27. Winkel & Magnussen 176, 1935 no. 123, ill. p. 15. Frederiksberg Ovenlyssal, 1940 no. 25, ill. Bruun Rasmussen auction 172, 1964 no. 26, ill. p. 17. DKK 60,000–80,000 / € 8,050–11,000*



183

183

**CARL BAAGØE**

b. Copenhagen 1829, d. Snekkersten 1902

"Hertha" and "Frederik" at anchor at Akureyri, Iceland. Signed and dated Carl Baagøe 1857. Oil on canvas. 74 x 116 cm.

*In 1856, Baagøe painted a similar motif from the village of Akureyri with the dimensions 79 x 115 cm. Sold at Bruun Rasmussen auction 627, 1996 no. 208 ill. p. 117. It was estimated DKK 75.000, but was sold for DKK 250.000.*

*Akureyri in Iceland is today a university town and is with its 18,925 inhabitants Iceland's fourth largest city after Reykjavík, Hafnarfjörður and Kópavogur.*

*DKK 75,000–100,000 / € 10,000–13,500*



184

184

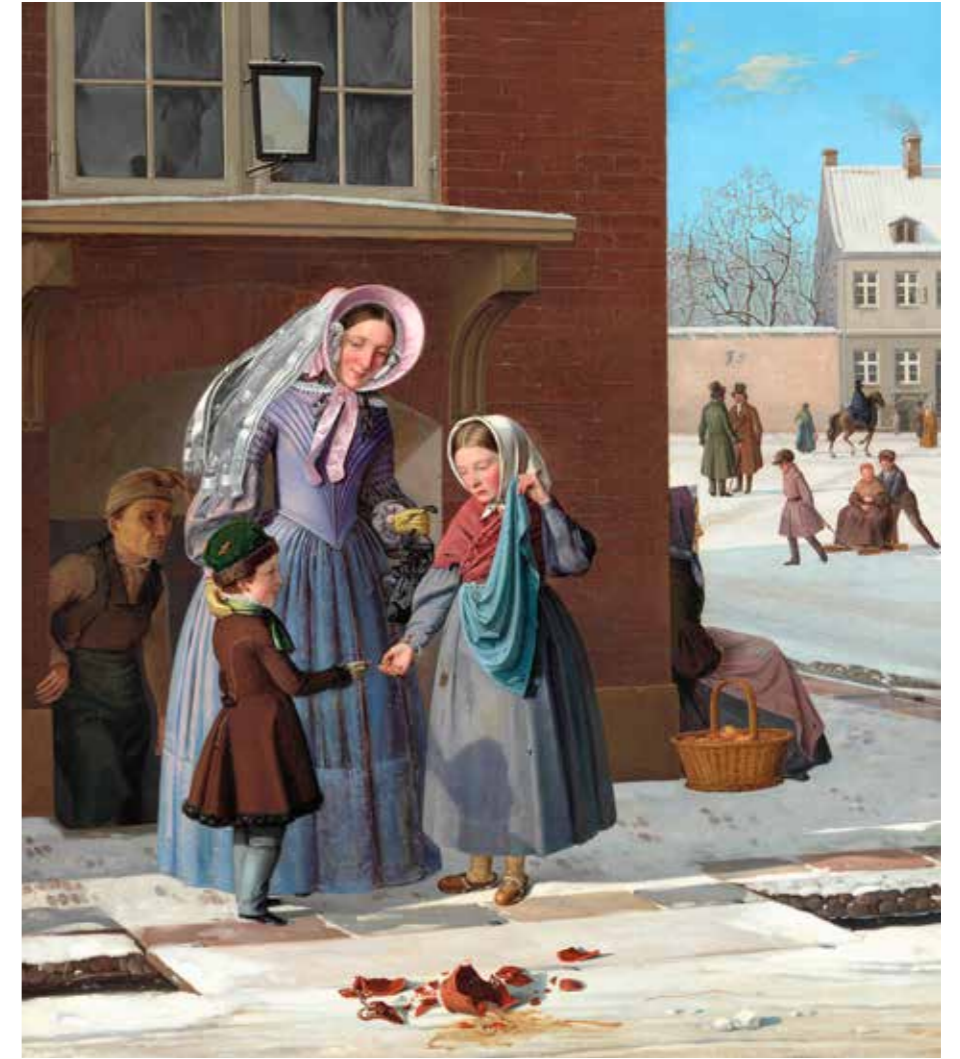
**JULIUS FRIEDLÆNDER**

b. Copenhagen 1810, d. s.p. 1861

"Fiskerbørn i Begreb med at slutte en Tuskhandel". Fishermen's children making a barter. Signed and dated I. F. 1857. Oil on canvas. 67 x 56 cm.

Repetition by the painter's own hand of a painting dated 1854. That one exhibited Charlottenborg 1854 no. 22 with the title mentioned above and carried out "on the highest order of and belonging to His Majesty King Frederik VII" (1808-1863).

DKK 25,000-30,000 / € 3,350-4,050



185

185

**CARL BALSGAARD**

b. Copenhagen 1812, d. s.p. 1893

"Københavnsk gadescene. Vinter." A winter day in Copenhagen. A young boy gives alms to a poor weeping girl who has dropped a jug. 1840s. Unsigned. Oil on canvas. 68 x 58 cm.

Provenance: Consul General Johan Hansen's collection no. 24 (1917).

Carl Balsgaard studied at the Danish Royal Academy of Fine Arts and was a private student of C. W. Eckersberg (1783-1853). However, he developed in a different artistic direction than the one associated with the Eckersberg's school. He specialized in still lifes with fruits and flowers, and from 1842 he also worked with porcelain painting. However, Balsgaard also made several figure paintings, and, as it appears from the catalogues of the Charlottenborg Exhibitions, he exhibited a number of genre paintings in the 1840s. He was later appointed conservator for the private painting collection of King Christian IX (1818-1906) and was a teacher for Queen Louise (1817-1898) in 1864.

DKK 100,000-150,000 / € 13,500-20,000





186

186

**CARL BLOCH**

b. Copenhagen 1834, d. s.p. 1890

"En Fiskerdreng ser ud over Vandet fra Taget af et Svinehus". A fisherman's boy is overlooking the sea from the roof of a shed. Signed and dated Carl Bloch 1858. Oil on canvas. 37 x 56 cm.

Rikard Magnussen, *A Catalogue Raisonné of the Works of Carl Bloch*, 1931, no. 66. Registered under 1859.

Britta Marie Wätzold, *A Catalogue Raisonné of the Works of Carl Bloch in: Sidsel Maria Søndergaard et al. (red.), "Carl Bloch - 1834-1890"*, 2012, p. 313. Registered under 1859.

Exhibited: Kunstforeningen, "Arbejder af maleren Carl Bloch", 1921, no. 26.

Hammermøllen, Hellebæk, "Kunstnere på Nordkysten" (Artists on the North Coast), 2004. Here exhibited with Anton Dorph's (1831-1914) painting with the same motif, that one owned by Flynderupgaard Museum, Helsingør. The two artists were friends and stayed at the Snekkersten Inn in 1858 and became interested in painting the same motif.

Literature: Rikard Magnussen, "Carl Bloch", 1931, ill. p. 24.

Provenance: Major General A. G. Nyholm. Kunsthallen auction 398, 1990 no. 14, ill. p. 11. Bruun Rasmussen auction 448, 1983 no. 231, ill. p. 199.

The motif has previously been described as being from Snekkersten before the village got its harbour. A fisherman's boy looks out over the Sound from the roof of a shed, from which a pig pokes its head out. A boat is pulled up on the beach and fishing gear is placed around the shed. However, it is more likely that the motif actually is from the beach in Ålsgårde, as the Swedish coastline in the background matches the one seen from there. According to a local historian, some of the area's farmers were fishing in the summer from sheds or stalls (Boderne) set up on the beach, like here. The area is today called Boderne-Ålsgårde.

Carl Bloch's works of art are currently at view at the grand exhibition "Carl Bloch - Forført" (Carl Bloch - Seduced) at the National Gallery of Denmark from 11 February 2023 to 29 May 2023.

DKK 60,000-80,000 / € 8,050-11,000



187

187

**CHRISTEN DALSGAARD**

b. Skive 1824, d. Sorø 1907

Peasant interior with a young girl reading a letter by the window. Signed and dated C. Dalsgaard 1852. Oil on canvas. 78 x 61 cm.

Exhibited: Presumably Charlottenborg 1852 no. 107 with the title "En ung pige, der læser et brev" (A young girl reading a letter).

DKK 60,000-80,000 / € 8,050-11,000



188

**188**  
**CHRISTEN KØBKE**

b. Copenhagen 1810, d. s.p. 1848

A seated male academy model. 1832. Dated 'den 16 Nov'. Inscribed Chr. Købke. Pencil on paper laid on paper. Sheet size 18 x 13.5 cm.

Provenance: Kunsthallen auction 447, 1994 no. 185, ill. p. 56.

The present work relates to a drawing in the Royal Collection of Graphic Art at The National Gallery of Denmark (Inv. No. KKS13596), which Købke made the day after the present work, 17 November 1832, and depicts the same model from a slightly different angle. DKK 20,000–25,000 / € 2,700–3,350

**189**  
**JENS ADOLF JERICHAU**

b. Assens 1816, d. Næder Dråby 1883

Portrait of the painter Thorald Læssøe (1816–1878). Signed Jerichau. Pencil and wash on paper. Sheet size 18.5 x 11.5 cm.

Jerichau and Læssøe first met at the Academy of Fine Arts in Copenhagen in the mid-1830s, when they both were only about 20 years old. They developed a very warm and lifelong friendship. In his memoirs, Jerichau expresses himself very lovingly about the beginning of their friendship (in Danish):

*"In this period, a young painter, Thorald Læssøe, had seen me and felt affection and kindness for me; he sought me out as often as he could at Lundbye, a mutual friend, and the eagerness with which he pursued me overcame all obstacles, so I received one benefit after another from him, and no man has done for me what he has, and it will probably be difficult to find the same devoted friendship that this man has shown me, so, though in his*



189

*whole life he has done much good to many people, it seems nothing against the unselfish friendship he has shown me." (Nicolaj Bøgh, "Erindringer af og om Jens Adolf Jerichau", 1884).*

Johan Th. Lundbye (1818–1848) attended the Academy of Fine Arts in Copenhagen at the same time as Jerichau and Læssøe and was also a close friend of the two, as also appears from the above quotation. Lundbye has portrayed Læssøe in a small oil painting from 1836, when Læssøe was about 21 years old (The National Gallery of Denmark Inv. No. KMS4571). The present drawing must be from the same period. Although the perspective of the present drawing is very unusual, and we thus see Læssøe obliquely from above and with lowered eyelids, we are looking at the same very young and sensitive man, with a thick, slightly unruly hair.

The two friends lived and had a studio together in Rome in Via Margutta in the mid-40s. The strong friendship continued unabated after Jerichau married the artist Elisabeth Jerichau Baumann (1819–1881) in Rome in 1846.

Elisabeth herself became a close friend of Læssøe. Among other things, she writes home from London in May 1860 (in Danish): "Never (underlined), with the exception of T Læssøe, have I met fellow human beings who in a more dignified and loving way thinks of and works for the well-being of others, both for the individual and for the common good." (Sine Krogh and Birgitte Fink, "Breve fra London", Cph. 2017, p. 129). She herself paints a portrait of an older Thorald Læssøe in 1868 – this was acquired by the National Gallery of Denmark at Bruun Rasmussen in 2021 (Inv. No. KMS9034).

The fact that the married couple Jerichau Baumann named their first-born son Thorald (1848–1909) after Læssøe also testifies to the close and significant friendship.

Provenance: By descent in the family of Thorald Læssøe until today.

DKK 20,000–30,000 / € 2,700–4,050



190

**190**  
**HERMANN CARMIENCEKE, ATTRIBUTED TO**

b. Hamburg 1810, d. Brooklyn 1867

The blue grotto (La Grotta Azzurra) in Capri. Unsigned. Oil on canvas. 57 x 78 cm.

*Hermann Carmiencke has depicted La Grotta Azzurra in his paintings several times.*

DKK 25,000–30,000 / € 3,350–4,050

**191**  
**MARTINUS RØRBYE**

b. Drammen 1803, d. Copenhagen 1848

"Udsigt til Amalfi fra en Drypsteensgrotte". View of Amalfi, Italy, from a stalactite cave. Unsigned. Inscribed Amalfi. Inscribed M. Rørbye on the underlying paper. Pencil and watercolour on paper laid on paper. Sheet size 23 x 29.5 cm.

*Provenance: The artist's estate auction 1849, listed under "Originale Tegninger af Rørbye, afsnit 9, Italien og Sicilien, A: Italien, a: Mere eller mindre colorede, eller tuscherede" (original drawings by Rørbye, section 9, Italy and Sicily, A: Italy, a: More or less colored), no. 10.*

*On Rørbye's great trip abroad from 1834 to 1837, during which he visited Italy, Greece and Turkey, he stayed in Amalfi in the summer months of 1835, where he made a number of drawings and six painted studies.*

DKK 20,000–25,000 / € 2,700–3,350



191

**192**  
**MARTINUS RØRBYE**

b. Drammen 1803, d. Copenhagen 1848

A man smoking a pipe in a courtyard in Constantinople. Unsigned. Inscribed M. Rørbye on the underlying paper. Pencil on paper laid on paper. Sheet size 27.5 x 21 cm.

DKK 20,000–25,000 / € 2,700–3,350



192



193



193



193

**ANTON MELBYE**

b. Copenhagen 1818, d. Paris 1875

"Det franske Skruelinieskib Napoleon paa Rheden af Beikos i Bosperus". The French naval vessel "Napoleon" off Beikos in the Bosphorus. Signed and dated Anton Melbye 1856. Oil on canvas. 72 x 108 cm.

On the reverse of the frame a label with Amalienborg Royal Palace inventory no. "A 59" and engraved (in Danish): "towards the Butler's pantry".

Exhibited: Charlottenborg 1858 nr. 120.

Provenance: King Frederik VIII (1843-1912) and Queen Lovisa of Denmark (1851-1926), Frederik VIII's Palace at Amalienborg. Hereafter their son and daughter-in-law, King Christian X (1870-1947) and Queen Alexandrine of Denmark (1879-1952), Christian VIII's Palace at Amalienborg; then their son and daughter-in-law, Hereditary Prince Knud (1900-1976) and Hereditary Princess Caroline-Mathilde of Denmark (1912-1995), Christian VIII's Palace at Amalienborg; thereafter their son, his Excellency Ingolf Count of Rosenborg (b. 1940) until today.

The Royal Library in Copenhagen owns a photograph of the present painting hanging in Frederik VIII's Palace at Amalienborg (Id DT002357.tif with the title "The Crown Prince's Workroom").



Beikos is a district in Istanbul, Turkey, at the northern end of the Bosphorus on the Anatolian side. The name is believed to be a combination of the words bey and kos, which means "village" in Farsi. Beikos includes an area from the streams of Küçüksu and Göksu (next to Anadoluhisarı) to the opening of the Bosphorus into the Black Sea, and the villages in the hinterland as far as the Riva creek.

DKK 100,000-150,000 / € 13,500-20,000

Photo of Hereditary Prince Knud's office in Christian VIII's Palace at Amalienborg from 1970.



194

194

### I. L. JENSEN

b. Copenhagen 1800, d. s.p. 1856

Nature morte with birds in a forest floor. Signed I. L. Jensen. Oil on canvas. 52 x 63 cm.

*Jensen's interest in shooting already began during his stay in Rome during the mid-1830s, but the interest truly came to fruition during the 1840s, perhaps inspired by his many visits to the manor houses, while he travelled around Denmark. There is no doubt that he had great knowledge of both the hunt and what it entailed. Downed birds were placed on the forest floor with hunting equipment, such as a hunting bag and shotgun, such as the motif in the present painting. He also painted a hunting party putting the day's catch out on display, paying the last respect to the dead animals. A custom that still exists today.*

*Literature: See Marie-Louise Berner & Mette Thelle, "Blomstermaleren J.L. Jensen. Mellem kunst og natur", (The Flower Painter J.L. Jensen. Between Art and Nature in the Golden Age), 2018, pp. 167-174 for descriptions and illustrations of Jensen's hunting scenes.*

DKK 60,000-80,000 / € 8,050-11,000

195

### JOHAN VILHELM GERTNER

b. Copenhagen 1818, d. s.p. 1871

Portrait of the Danish Golden Age poet and author Adam Oehlenschläger (1779-1850) in tailcoat with decorations. Signed and dated I. Vilhelm Gertner pinx. 1842. Oil on canvas. 61 x 49 cm.

*Exhibited: Charlottenborg 1843 no. 119.*



195

*Literature: Povl Eller, "Adam Oehlenschläger Portrætter", Frederiksborg, The Museum of National History, 1958, mentioned pp. 90-91, no. 32. Ill. p. 91. The Nivaagaard Collection, "Guldalderens andet ansigt. Johan Vilhelm Gertner", 2001, pp. 9-10.*

*Provenance: Bookseller Johan Dahl, Oslo (1843). High Court judge Christian Schmidth. His widow Mrs Valborg Schmidth, her estate auction Winkel & Magnussen 263, 1940 no. 14. Harp player Henrik Boye (1958).*

*Gertner made several portraits of Adam Oehlenschläger, e.g. there is a later repetition of the same motif from 1846 at Frederiksborg Museum of National History, Hillerød (Inv. No. A 841), this with few changes in the orders and the collar.*

*In the present painting, Oehlenschläger is wearing the Cross of Honour of the Order of the Dannebrog (Dannebrogsmændenes hæderstegn), a breast star for commanders of the Order of the Dannebrog, and a breast star for commanders of the Swedish Royal Order of the Polar Star.*

*On the occasion of the present painting, Oehlenschläger wrote in 1842 the tribute poem with the title (in Danish) "To Gertner, when he had painted me", published in F. L. Liebenberg (ed.), "Oehlenschlägers Poetiske Skrifter", Selskabet til Udgivelse af Oehlenschlägers Skrifter, vol. 23, 1861, pp. 32-33.*

DKK 60,000-80,000 / € 8,050-11,000



196

**196**  
**H. A. BRENDEKILDE**

b. Brøndekilde 1857, d. Jyllinge 1942

"Naar Bÿgget er modent". When the barley is ripe. A man in a straw hat, standing in a ripe cornfield, stopping his pipe. Swallows fly low. Unsigned. Oil on canvas. 45 x 36 cm.

*Inscribed on the stretcher (in Danish): "It is my belief that this picture was painted by my father the painter H. A. Brendekilde. Arne Brendekilde 3/1 1945".*

DKK 20,000–30,000 / € 2,700–4,050



197

**197**  
**SIMON SIMONSEN**

b. Munich 1841, d. Copenhagen 1928

"I Hundegaarden". In the kennel. Signed and dated Simon Simonsen 1916. Oil on canvas. 69 x 102 cm. Exhibited: Charlottenborg 1916 no. 469.

*Provenance: Mrs M. Arildsen (1916).*

DKK 40,000–50,000 / € 5,400–6,700

**198**  
**SIMON SIMONSEN**

b. Munich 1841, d. Copenhagen 1928

"To Pointerhvalpe". Two pointer puppies and chickens at a water trough. Signed and dated Simon Simonsen 1917. Oil on canvas. 38 x 57 cm.

*Exhibited: Presumably Charlottenborg 1918 no. 502.*

*Provenance: Bruun Rasmussen auction 79, 1956 no. 165, ill. p. 75. DKK 20,000–25,000 / € 2,700–3,350*



198



199

**199**  
**HOLGER DRACHMANN**

b. Copenhagen 1846, d. Hornbæk 1908

Fishing boats on the beach at Schevevingen. Signed and dated  
Holger Drachmann Schevevingen 82. Oil on canvas. 48 x 73 cm.

DKK 30,000–40,000 / € 4,050–5,400



200

**200**  
**THEODOR PHILIPSEN**

b. Copenhagen 1840, d. s.p. 1920

"Køerne drives hjem". The cows are led home. Landscape presumably from Saltholm. 1880. Signed with monogram. Oil on canvas. 55 x 82 cm.

Vibeke Skov, *A Catalogue Raisonné of the Works of Theodor Philipsen*, 1992, no. 186.

Flemming Brix, Finn Therman Frederiksen and Svend Erik Lorentzen (BFL), *A Catalogue Raisonné of the Works of Theodor Philipsen*, 2016, no. 285.

Exhibited: Kunstforeningen's exhibition at Charlottenborg, "Arbejder af Theodor Philipsen", 1946 no. 21.

Literature: Kai Grunth, "Kunst i Privateje", 1945, vol. II, mentioned and ill. p. 89 fig. 20 (in Danish): "By Philipsen, we reproduce an early picture "Køerne drives hjem" (The cows are led home), where the old cattleman has gone out into the shallow water to chase the animals onto land. A brightly colored cow in the foreground, which turns its head towards the viewer and is strongly illuminated, has become the focal point of the picture. In return, it has also become a marvel of in-depth study".

Herman Madsen, "200 danske malere og deres værker", 1946, vol. I, ill. p. 289 fig. 17.

Provenance: Merchandise broker A. W. Simmelhag (1945), his estate auction Bruun Rasmussen 76, 1956 no. 53, ill. p. 33. Bruun Rasmussen auction 576, 1992 no. 32, ill. p. 39.

DKK 40,000–60,000 / € 5,400–8,050



201

201 <sup>ARR</sup>

**JOHANNES LARSEN**

b. Kerteminde 1867, d. s.p. 1961

A black woodpecker by a tree stump. Signed with monogram and dated 1916.

Oil on canvas. 52 x 67 cm.

*A label from Voss Kunsthandel (Art dealer) on the stretcher.*

*DKK 40,000–50,000 / € 5,400–6,700*

202 <sup>ARR</sup>

**JOHANNES LARSEN**

b. Kerteminde 1867, d. s.p. 1961

Two swans in the bay at Kerteminde. Signed with monogram and dated 33.

Oil on canvas. 61 x 82 cm.

*Provenance: Furrier R. Holstein Bagge, his estate auction Winkel & Magnussen 250, 1939 no. 327, ill. p. 33.*

*DKK 40,000–60,000 / € 5,400–8,050*

203

**VIGGO JOHANSEN**

b. Copenhagen 1851, d. s.p. 1935

Højen beach at Skagen. Signed and dated V. Johansen Højen 1910. Oil on

canvas. 33 x 47 cm.

*DKK 25,000–30,000 / € 3,350–4,050*



202



203





204

**204**  
**JOHAN THOMAS LUNDBYE**

b. Kalundborg 1818, d. Bedsted 1848

“To kalve i en stald”. Two calves in a barn. Signed J. Lundbye Juni. Oil on paper laid on panel. 19 x 26 cm.

*Inscribed by Karl Madsen on the reverse (in Danish): “That this picture is painted by J. Th. Lundbye and identical to the painting listed as No. 6 in my catalogue raisonné of the artist’s works, I hereby certify”. Signed and dated Karl Madsen Febr. 1916.*

*Karl Madsen, A Catalogue Raisonné of the Works of J. Th. Lundbye, 1895, no. 6. Here described as dated June 1835.*

*Provenance: Art dealer C. L. Foltmar (1895).*

*DKK 40,000–50,000 / € 5,400–6,700*

**205**  
**CHRISTIAN BLACHE**

b. Aarhus 1838, d. Copenhagen 1920

Fishing boats at anchor at low tide, Nordby, Fanø. Signed and dated Chr. Blache Fanø 75. Oil on canvas. 33 x 56 cm.

*DKK 25,000–30,000 / € 3,350–4,050*

**206**  
**PETER RAADSIG**

b. Copenhagen 1806, d. s.p. 1882

A spring at a former public washing place - un lavatoio pubblico - near Cervarra. Signed and dated P. R. Cervarra 1842. Oil on paper laid on canvas. 39 x 55 cm.

*Provenance: Bruun Rasmussen auction 1308, 2013 no. 28. Bruun Rasmussen auction 1812, 2018 no. 29.*

*Peter Raadsig was in Italy from 1841 to 1845.*

*Cervarra is a small Italian village in the Apennines.*

*DKK 25,000–30,000 / € 3,350–4,050*



205



206



207

**207**  
**P. P. RUBENS, AFTER, 17TH-18TH CENTURY**

The Small Last Judgement. Unsigned. Oil on canvas. 183 x 121 cm.  
 The original Small Last Judgement by Rubens from c. 1621-22 is now in the Alte Pinakothek, Munich (Inv. No. 611). Its name distinguishes it from the same artist's The Great Last Judgement of c. 1617, also in the Alte Pinakothek, Munich (Inv. No. 890).  
 DKK 20,000-30,000 / € 2,700-4,050



208

**208**  
**ANTHONY VAN DYCK, AFTER, 18TH CENTURY**

"Thetis Receiving the Weapons of Achilles from Hephaestus". Unsigned. Oil on canvas. 57 x 71 cm.  
 Anthony van Dyck painted several versions in the early 1630s. These are now at Kunsthistorisches Museum, Vienna, Liechtenstein Museum, Vienna, and Sanssouci Palace in Potsdam.  
 Provenance: Møllerup manor house. DKK 25,000-30,000 / € 3,350-4,050



209

**209**  
**ROMAN MAKSIMOVICH VOLKOV, STYLE OF,**  
**FIRST QUARTER OF THE 19TH CENTURY**

Portrait of Tsar Alexander I of Russia (1777-1825), en face, half-length in a red draped and columned interior, wearing military uniform with a sash and epaulettes, resting his right hand on a book of law besides the Imperial Russian mitre crown. Unsigned. Oil on canvas. 90 x 72 cm.

*Provenance: Finnish private collection. DKK 25,000–30,000 / € 3,350–4,050*



210

**210**  
**ENGLISH SCHOOL, 18TH CENTURY**

Portrait of a noble lady wearing a mink cape, muff and a white hat with a bow. Unsigned. Oil on canvas. 81 x 65 cm. Period frame.

*Provenance: Presumably Gavnbø Castle.*

*DKK 30,000–40,000 / € 4,050–5,400*



211

**211**  
**VILHELM BISSEN**

b. Copenhagen 1836, d. s.p. 1913

"Yngling til hest". Youngster on horseback. Signed with monogram and marked L. Rasmussen København. Sculpture of patinated bronze. H. 49 cm. L. 52 cm. B. 15 cm. Original receipt dated 1915 from L. Rasmussen is included.

*The earliest version was cast in plaster in 1885 and commissioned in bronze by brewer Carl Jacobsen (1842-1914) and subsequently donated to Copenhagen Municipality. It was in 1903 placed on Vestre Boulevard (now H. C. Andersen's Boulevard). At this location, it was shown next to other sculptures in order to draw attention to his museum, The Glyptotek, which was built nearby. The road was later reconstructed and the sculpture was moved to Rødkilde Plads in The North Western part of Copenhagen where it still can be viewed today.*

*DKK 20,000-25,000 / € 2,700-3,350*



212

212  
DUTCH SCHOOL, C. 1600

Portrait of a lady with a lace collar and pearl necklace. Unsigned.

Oil on canvas. 57 x 47 cm.

*Provenance: Møllerup manor house.*

*DKK 30,000–40,000 / € 4,050–5,400*

## INDEX

### A

Aagaard, C. F. 161  
 Ancher, Michael 149  
 Arcimboldo, Giuseppe, circle of 132

### B

Baagøe, Carl 183  
 Baccarat 102  
 Balsgaard, Carl 185  
 Bendz, Wilhelm 174  
 Bicego, Marco 445  
 Bissen, Hermann Wilhelm 93  
 Bissen, Vilhelm 211  
 Blache, Christian 205  
 Bloch, Carl 186  
 Brendekilde, H. A. 121  
 135, 138, 196  
 Brovar, Jakob Ivanovich 155  
 Buccellati 452, 453, 454  
 Bulgari 508, 549, 552

### C

C'est Laudier 548  
 Caldwell, J. E. 441  
 Carmiencke, Hermann, attributed to 190  
 Carstensen, A. Riis 123  
 Cartier 407, 408, 409  
 420, 483, 486  
 488, 489, 593  
 Castellani 414  
 Chanel 594, 595, 596  
 597, 598, 599  
 Coosemans, Alexander 131  
 Cresson, Jean-Baptiste 16

### D

Dali, Salvador 412  
 Dalsgaard, Christen 187  
 Drachmann, Holger 199  
 Dreyer, Dankvart 178  
 Dulong, Marianne 404  
 Dutch painter, 17th century 128  
 Dutch school, c. 1600 212

Dyck, Anthony van, after 208

### E

Eckersberg, C. W. 167  
 Edelfelt, Albert 153  
 English school, 18th century 210

### F

Fidelys Schey 76  
 Fischer, Paul 122, 133, 152  
 Foltjern, Gustaf 31  
 Friedländer, Julius 184

### G

Georg Jensen & Wendel 553  
 Gertner, Johan Vilhelm 195  
 Griegst, Arje 413, 416  
 Grosse 439  
 Gucci 536  
 Gübelin 567

### H

Hansen, Constantin 94  
 Hartmann's 422  
 459, 461, 462  
 Henriksen, Niels Georg 100  
 Hermès 600, 601, 602  
 Hilker, Georg Christian 94  
 Holmstrup, V. 402  
 Holsøe, Carl 129, 130  
 Holsøe, Niels 154  
 Hvelplund, Christine 403  
 Hvelplund, E. 514

### J

Jacob Frères rue Meslee,  
 attributed to 80  
 Jensen, Georg 557, 586  
 Jensen, I. L. 194  
 Jerichau Baumann, Elisabeth 146  
 Jerichau, Holger H. 112  
 Jerichau, Jens Adolf 189  
 Johansen, Viggo 203  
 Joseph Dufour & Cie 79

Joseph Dufour & Cie, attributed to 78

Juel, Jens 165, 166, 175

### K

Klarlund 556  
 Kyhn, Vilhelm 171  
 Købke, Christen 188

### L

Larsen, Johannes 201, 202  
 Larsen, Knud 150  
 Locher, Carl 117, 124, 127  
 Lundbye, Johan Thomas 204  
 Lundelius, Anders 50  
 Lynggaard, Ole 401, 405  
 542, 545, 555

### M

Marstrand, Wilhelm 164, 181  
 Melbye, Anton 126, 193  
 Mercier Frères est. 1828 101  
 Michelsen, A. 518  
 Monies, David 176  
 Mølsted, Christian 136  
 Mønsted, Peder 113  
 118, 125, 134  
 137, 157, 162

### N

Nordin, Lorentz 32

### O

Olsson, Julius 119  
 Ortmann, Mathias, workshop of 23

### P

Pedersen, Viggo 116, 163  
 Petersen, Edvard 172  
 Petzholdt, Fritz 179  
 Philipsen, Theodor 200  
 Point, Armand 97  
 Pomellato 482, 485  
 Precht, Burchard, attributed to 2

## INDEX

### R

Raadsig, Peter 206  
 Ring, L. A. 159  
 Roed, Jørgen, attributed to 173  
 Rohde, Frederik 180  
 Rubens, P. P., after 207  
 Rørbye, Martinus 168  
 177, 191, 192

### S

Shamballa 540  
 Simonsen, Simon 197, 198  
 Skovgaard, Joakim 120  
 Skovgaard, P. C. 169  
 Slott-Møller, Agnes 139  
 Sonne, Jørgen 170  
 Ståhl, Ephraim 46  
 Svart, Ruben 417  
 Syberg, Anna, attributed to 141  
 Syberg, Fritz 158  
 Sørensen, C. F. 182

### T

Thaulow, Frits 156  
 Thomsen, Carl 151  
 Tiffany & Co. 406, 448  
 Tornøe, Wenzel 148  
 Trolle, Natascha 446, 447  
 Tuxen, Laurits 114, 115

### V

Van Cleef & Arpels 450  
 Volkov, Roman Maksimovich,  
 style of 209  
 Vuitton, Louis 410  
 588, 591, 592

### W

Wegmann, Bertha 140, 142, 143  
 144, 145, 147

WIN 473

### Z

Zahrtmann, Kristian 160



Disse købsvilkår udgør Bruun Rasmussen Kunstauktioner A/S' ("BRK") købsvilkår for traditionelle auktioner og er gældende fra 1. februar 2017. BRK kan til enhver tid ændre købsvilkårene.

Ved bud accepterer budgiver/køber at være bundet af de til enhver tid gældende købsvilkår, som fremgår på [bruun-rasmussen.dk](http://bruun-rasmussen.dk). Købsvilkårene gælder både i forhold til erhvervsdrivende og forbrugere.

## FØR AUKTIONEN

### 1 VURDERING AF GENSTANDE

1.1 Alle udbudte genstande er vurderet af BRK. Vurderingen er et skøn over det forventede hammerslag, jf. punkt 5.3. Vurderingen er baseret på tidligere salg af samme type genstande og erfaringer hos BRK. Hammerslag kan derfor falde højere eller lavere ud end vurderingen.

### 2 BESKRIVELSE AF GENSTANDE

- 2.1 Udbudte genstande præsenteres med fotos og beskrivelse i kataloger og på [bruun-rasmussen.dk](http://bruun-rasmussen.dk). Beskrivelsen foretages efter bedste overbevisning af BRK og ud fra en nøje undersøgelse efter den på salgstidspunktet herskende opfattelse blandt eksperter.
- 2.2 De udbudte genstande er af en alder og art, der bevirker, at de ofte er behæftede med slitage, mangler, beskadigelser og reparationer. Som udgangspunkt sælges alt som brugte genstande, og derfor indeholder beskrivelsen i kataloget og på [bruun-rasmussen.dk](http://bruun-rasmussen.dk) ikke en redegørelse for ovenstående punkter eller genstandens stand.
- 2.3 I visse tilfælde vælger BRK at beskrive en genstands oprindelse. Det sker, hvis en tidligere ejer er offentlig kendt, og/eller hvis historien om et tidligere ejerskab belyser genstanden og dens art. Omvendt sker det også, at sådanne informationer udelades fra beskrivelsen, f.eks. for at imødekomme sælgers ønske om diskretion.
- 2.4 Vurderingen og beskrivelsen kan blive revideret forud for auktionen. Ændringer offentliggøres på [bruun-rasmussen.dk](http://bruun-rasmussen.dk)

### 3 EFTERSYN

- 3.1 Udbudte genstande udstilles op til auktionen i et showroom hos BRK. Potentielle budgivere opfordres til at se genstanden efter i detaljer og har selv ansvaret for at forvise sig om dens stand på disse eftersyn, hvor der også er mulighed for at rådføre sig hos vurderingssagkyndige.
- 3.2 Hvis en potentiel køber ikke har mulighed for at besigtige genstanden ved selvsyn, kan der i de fleste tilfælde udfærdiges en konditionsrapport. Beskrivelsen heri er foretaget efter BRK's bedste overbevisning, men er ikke baseret på videnskabelige undersøgelser. En konditionsrapport tjener blot som identifikation og er ment som en hjælp til budgivere, der ikke selv har mulighed for at besigtige genstanden på eftersynet.

## UNDER AUKTIONEN

### 4 BRK'S ROLLE

- 4.1 Salget af en genstand formidles af BRK på vegne af sælger. BRK afhænder altid udbudte genstande til den højst mulige pris under budgivningen.
- 4.2 Udbudte genstande kan have en med sælger aftalt mindstpris, hvorunder den ikke kan sælges. Denne pris er fortrolig.
- 4.3 De traditionelle auktioner overværes af en af Justitsministeriet beskikket auktionsleder, der sikrer, at auktionerne går retmæssigt for sig.

### 5 BUDGIVNING

- 5.1 Auktionerne afvikles i danske kroner. De tilnærmelsesvise beløb i euro/US dollar vil blive oplyst på skærme i auktionssalen og i øvrigt på opfordring.
- 5.2 Auktionarius bestemmer overbuds størrelse og i hvilket tempo, auktionen afvikles. Overbud stiger normalt med 5 % - 10 % i forhold til det foregående bud. Normalt sælges der 50-100 katalognumre i timen.
- 5.3 Hammerslag betegner både det forhold, at auktionarius slår med hammeren og derved markerer budgivningens afslutning, og den pris (budsum), den udbudte genstand sælges til. Se punkt 7 vedrørende beløb, der tillægges hammerslaget.
- 5.4 Køber er den budgiver, der opnår hammerslag. Ved hammerslaget indgås på baggrund af disse købsvilkår en bindende købs-/salgsaftale.
- 5.5 Bydes på andres vegne, hæfter budgiver som selvskyldnerkautionist for handlen.
- 5.6 Genstande købes som beset, og køber har uanset budtype ingen fortrydelsesret, heller ikke efter forbrugeraftaleloven.
- 5.7 Budgiver skal efter anvisninger fra BRK identificere sig og dokumentere sin betalingsdygtighed, f.eks. ved registrering af gyldigt betalings-/kreditkort, bankgaranti eller indbetaling af depositum.
- 5.8 BRK kan nægte at acceptere et bud, hvis en tilstrækkelig sikkerhed for betaling mangler, eller hvis budgiver tidligere har misligholdt betalingsforpligtigelser ved køb hos BRK.
- 5.9 Auktionslederen træffer i samråd med auktionarius afgørelse i alle tvivlstilfælde omkring budgivningen.

### 6 BUDTYPER

- 6.1 Der er følgende muligheder for at afgive bud:
- PERSONLIGT FREMMØDE:**  
 Registrering og udlevering af bydeskilt foregår ved indgangen til auktionssalen. Når budgiver ønsker at byde, signaleres dette til auktionarius ved at række bydeskiltet i vejret og tydeligt fremvise dets nummer.
- KOMMISSIONSBUD:**  
 Det ønskede maksimale bud kan afgives via [bruun-rasmussen.dk](http://bruun-rasmussen.dk) frem til auktionens start eller pr. e-mail, fax eller telefon, så budet er modtaget senest 24 timer forud for auktionens start. En kommissionær byder på budgivers vegne inden for rammerne af det ønskede maksimalbud og vil altid afgive lavest muligt overbud.
- TELEFONBUD:**  
 I forhold til visse genstande er der mulighed for at blive ringet op af en medarbejder fra BRK, der vil byde på budgivers vegne under auktionen. Servicen kan bestilles via [bruun-rasmussen.dk](http://bruun-rasmussen.dk) indtil tre timer før auktionens start.

### LIVE BIDDING:

Det er muligt at følge auktionen live og byde med via [bruun-rasmussen.dk](http://bruun-rasmussen.dk)

### FORAUKTION:

Visse traditionelle auktioner indledes med en net-auktion. De højeste bud på net-auktionen danner udgangspunktet på den efterfølgende traditionelle auktion.

## EFTER AUKTIONEN

### 7 BELØB, DER TILLÆGGES HAMMERSLAGET

- 7.1 I tillæg til hammerslaget, jf. punkt 5.3, skal køber for den enkelte genstand betale købersalær og, hvis betingelserne er opfyldt, de øvrige beløb, der er nærmere beskrevet nedenfor. Det samlede beløb, som køber skal betale til BRK, benævnes "købesummen".
- 7.1.1 Købersalær: Hammerslaget tillægges et salær til BRK. På de traditionelle auktioner udgør salæret 25,6 % af hammerslaget + moms af salæret, i alt 32 %. For frimærker og mønter udgørsalæret 20 % af hammerslaget + moms af salæret, i alt 25 %.
- 7.1.2 "LIVE bidding": BRK's "LIVE bidding"-software via [bruun-rasmussen.dk](http://bruun-rasmussen.dk) er gratis at benytte for budgivere.
- 7.1.3 Fuldmoms: Visse genstande handles efter de gældende regler om fuldmoms. Her beregnes der moms på 25 % af både hammerslag og salær. Disse genstande er i beskrivelsen i kataloget og på [bruun-rasmussen.dk](http://bruun-rasmussen.dk) mærket med symbolet "\*" eller med teksten: "Dette emne handles i fuldmoms".
- 7.1.4 Kunstnerafgift: Ifølge dansk lovgivning om ophavsret skal der opkræves kunstnerafgift (følgeretsvederlag) for værker af nyere danske og visse udenlandske kunstnere, som enten er nulevende eller ikke har været døde i mere end 70 år. Kunstnerafgiften opkræves på vegne af VISDA. Disse værker er i kataloget mærket med "ARR" (Artist's Resale Right) og på [bruun-rasmussen.dk](http://bruun-rasmussen.dk) med teksten "Dette emne er belagt med kunstnerafgift". Kunstnerafgiften tillægges hele hammerslaget + salær (ekskl. moms), når beløbet overstiger 300 euro, som angivet nedenfor:

Hammerslag + salær (ekskl. moms)	Betalingsssats
300,01 - 50.000 euro	5%
50.000,01 - 200.000 euro	3%
200.000,01 - 350.000 euro	1%
350.000,01 - 500.000 euro	0.5%
over 500.000 euro	0.25%

Kunstnerafgiften kan ikke overstige 12.500 euro (ekskl. moms) for den enkelte genstand. Afgiften skal betales i danske kroner, og omregningskursen (EUR/DKK) fastsættes af VISDA.

- 7.1.5 Betalings-/kreditkortgebyr: BRK forbeholder sig ret til at opkræve de af indløsningselskaberne pålagte betalings-/kreditkortgebyrer. Satserne fremgår ved budgivning via [bruun-rasmussen.dk](http://bruun-rasmussen.dk) og ved betaling.

### 8 BETALINGSFRIST

- 8.1 Købesummen forfalder til betaling ved hammerslaget, og køber har herefter otte dage til at betale købesummen til BRK.

### 9 BETALINGSMÅDER

- 9.1 Betaling kan ske på følgende måder:
- A: Med betalings-/kreditkort (Dankort, Visa, MasterCard, Maestro, Diners Club, JCB og China UnionPay) eller kontant (op til 19.999 kr.) i auktionssalen eller efterfølgende i en afdeling hos BRK. Bemærk, at vi ikke modtager 500-eurosedler.

B: Med betalings-/kreditkort (Dankort, Visa, MasterCard, Maestro, Diners Club og JCB) på [bruun-rasmussen.dk](http://bruun-rasmussen.dk) under købers personlige side.

C: Via bankoverførsel til BRK's konto i Danske Bank: 4183 4310970638 · Swift/BIC: DABADKKK · IBAN: DK4130004310970638.

## 10 MOMSFRITAGELSE, -BETALING OG -DEPONERING

- 10.1 Visse købere kan vælge hvilken momstype, der skal være gældende for handlen. Valget skal meddeles BRK senest to hverdage efter købet og kan ikke omgøres.
- A: Momsregistrerede virksomheder i Danmark kan vælge, at handlen skal ske efter reglerne om fuldmoms, jf. punkt 7.1.3.
- B: Momsregistrerede virksomheder i et andet EU-land kan fritages for dansk moms, når det kan dokumenteres, at genstanden er transporteret til den udenlandske adresse, som køber har oplyst over for BRK, og som er anført på fakturaen. I sådanne tilfælde skal der afregnes moms efter de gældende regler i det land, hvor køber er momsregistreret. Det tilrådes at søge oplysning hos de lokale myndigheder. Køber kan undlade at gøre brug af muligheden for momsfrigtagelse og i stedet betale dansk brugtmoms/fuldmoms.
- C: Købere med bopæl uden for EU kan fritages for dansk moms, når det kan dokumenteres, at genstanden er transporteret ud af EU. BRK udsteder så vidt muligt og mod gebyr de fornødne eksportpapirer, som skal fremvises ved toldmyndighederne. Køber kan undlade at gøre brug af muligheden for momsfrigtagelse og i stedet betale dansk brugtmoms/fuldmoms.
- 10.2 Momsregistrerede virksomheder i et andet EU-land og købere med bopæl uden for EU skal deponere den danske moms af fakturabeløbet hos BRK, indtil eksporten er gennemført på dokumenteret lovpligtig vis. Foretages eksporten af en af BRK godkendt speditør, skal momsen ikke deponeres. Se listen over godkendte speditører på [bruun-rasmussen.dk](http://bruun-rasmussen.dk)
- 11 **OVERSKRIDELSE AF BETALINGSFRIST**
- 11.1 Overskrides en betalingsfrist, herunder fristen i punkt 8, opkræves morarenter, som beregnes efter Nationalbankens officielle udlånsrente + 8 % om året af det skyldige beløb.
- 11.2 Betales købesummen inkl. renter ikke senest ti dage efter, at der er fremsat påkrav herom, er BRK berettiget til at søge købesummen betalt ved modregning i depositum/ved træk på bankgaranti eller at hæve købet.
- 11.3 Hæves købet, er BRK berettiget til at sælge genstanden på en ny auktion og kræve omkostningerne og en eventuel difference mellem hammerslag (samt salær), der er opnået på de to auktioner, betalt af den misligholdende køber.
- 11.4 Alle forfaldne krav (inkl. omkostninger), som ikke betales rettidigt, kan BRK i tillæg til inkasso søge inddrevet på følgende måder:
- A: For købers regning sælge genstande indleveret til auktion af eller på vegne af køber. Salget kan gennemføres uden hensyntagen til en aftalt mindstpris. Genstande indleveret til auktion kan ikke kræves udleveret, så længe forfalden gæld henstår ubetalt.
- B: Inddrage købers tilgodehavende hos BRK, herunder tilgodehavende fra salg af genstande indleveret af eller på vegne af køber, uanset om et sådant tilgodehavende stammer fra auktionssalg, som ligger forud for eller efter tidspunktet for købers misligholdelse.

## 12 AFHENTNING OG UDLEVERING

- 12.1 Ejendomsretten til en købt genstand overgår til køber, når hele købesummen inkl. eventuelle renter og gebyrer er betalt, og først herefter kan udlevering af genstanden finde sted.
- 12.2 Ved udlevering af en købt genstand forbeholder BRK sig retten til at kræve tilfredsstillende dokumentation for, at den person, som ønsker genstanden udleveret, enten selv er køberen eller er bemyndiget af køberen til at få genstanden udleveret.
- 12.3 Udlevering af visse våben kræver forevisning af gyldig våbentilladelse. Sådant krav er angivet med teksten "Køb af dette emne kræver forevisning af gyldig våbentilladelse" i kataloget og på [bruun-rasmussen.dk](http://bruun-rasmussen.dk)
- 12.4 Købte genstande henligger fra hammerslaget for købers regning og risiko. Afhentning skal ske senest otte hverdage efter sidste auktionsdag.
- 12.5 Foretages afhentningen ikke rettidigt, transporteres de købte genstande til et lager for købers regning og risiko. Transporten koster 150 kr. inkl. moms pr. genstand, og opbevaringen koster 150 kr. inkl. moms pr. genstand pr. påbegyndt uge. Henligger en genstand uafhentet i så lang tid, at lagerlejen overstiger genstandens værdi, er BRK berettiget til for købers regning og risiko og uden hensyn til mindstepris at bortauktionere genstanden eller sælge den underhånden. Køber hæfter fortsat for udgifter til transport og lagerleje, der ikke dækkes ved sådant salg.
- 12.6 I henhold til gældende hvidvasklovgivning skal køber i visse tilfælde udlevere identitetsoplysninger og fremvise billed-id til BRK, før køber kan få den købte genstand i sin besiddelse

## 13 FORSENDELSE

- 13.1 Er køber forhindret i selv at afhente en genstand, tilbyder BRK for købers regning og risiko at emballere og arrangere forsendelse enten med post eller speditør. Se punkt 12.2 angående legitimation.

## 14 EKSPORTTILLADELSE

- 14.1 For at sikre at dansk kulturarv af afgørende betydning forbliver i Danmark, kan Kulturværtdiudvalget for visse genstandes vedkommende nedlægge eksportforbud. Hvis køber ønsker at eksportere en genstand ud af Danmark, hvor der er nedlagt et eksportforbud, annulleres købet, og Kulturværtdiudvalget er forpligtet til at overtage genstanden til den pris, der blev opnået på auktionen. Køber kan ikke rejse krav mod BRK som følge af, at et eksportforbud bliver nedlagt.
- 14.2 Visse genstande er omfattet af Washingtonkonventionen, også kendt som CITES, der har til formål at stoppe ulovlig handel med genstande fremstillet af udryddelsestruede vilde dyr og planter. Såfremt en genstand er omfattet af Washingtonkonventionen, CITES, liste 1, vil det fremgå af beskrivelsen på [bruun-rasmussen.dk](http://bruun-rasmussen.dk) og være markeret med symbolet "©" i kataloget. Følgende regler gør sig gældende:
  - A: Genstande omfattet af Washingtonkonventionen, CITES, liste 1, må kun handles, når der foreligger en dispensation i form af et såkaldt CITES-salgscertifikat. BRK indhenter det fornødne certifikat fra Naturstyrelsen, der tillader handel og eksport til lande inden for EU. Dog kan genstande, som er færdigforarbejdet før 1947, frit handles inden for EU uden et certifikat.
  - B: Det er alene genstande omfattet af Washingtonkonventionen, CITES, liste 1, som er særkilt markeret på [bruun-rasmussen.dk](http://bruun-rasmussen.dk) og i kataloget. Genstande omfattet af Washingtonkonventionen, CITES, liste 2, der frit kan sælges og transporteres inden for EU, er ikke særkilt markeret.
  - C: Ved eksport til lande uden for EU skal der uanset årstallet for genstandens færdigforarbejdning altid indhentes en CITES-reeksporttilladelse fra Naturstyrelsen,

når genstanden er omfattet af Washingtonkonventionen, CITES, liste 1 og 2. Denne eksporttilladelse kan normalt indhentes problemfrit, når liste 1-genstande enten er solgt med et CITES-salgscertifikat eller er færdigforarbejdet før 1947. Liste 2-genstande opnår ligeledes normalt problemfrit en reeksporttilladelse. Eventuelle omkostninger, der opkræves at de danske myndigheder i forbindelse med udstedelse af en reeksporttilladelse, vil blive pålagt købers faktura.

D: I forbindelse med eksport til lande uden for EU kan særlige regler gøre sig gældende ifm. den efterfølgende import, og køber opfordres til at indhente oplysninger fra egne myndigheder.

## 15 MANGLER VED KØBTE GENSTANDE

- 15.1 Købelovens mangelsregler kan finde anvendelse. Nedenfor er angivet et ikke udtømmende uddrag af købers mangelsbeføjelser.
- 15.2 Køber er berettiget til at annullere et køb, hvis beskrivelsen har været behæftet med væsentlige fejl, der har ført til et højere hammerslag, end en korrekt beskrivelse ville have resulteret i. I sådanne tilfælde vil den samlede købesum blive refunderet. Køber kan ikke kræve betaling af renter af købesummen eller kræve dækning af anden udgift eller tab.
- 15.3 Et køb kan ikke annulleres, og køber kan ikke kræve købesummen refunderet eller rejse noget andet krav mod BRK, hvis beskrivelsen af genstanden er i overensstemmelse med punkt 2, eller hvis en påvisning af falskneri havde krævet brug af videnskabelige metoder, der enten ikke var tilgængelige på salgstidspunktet, havde været uforholdsmæssigt omkostningskrævende at anvende eller havde ført til beskadigelse af den pågældende genstand.
- 15.4 Krav om annullering af et køb skal meddeles BRK, når køber er blevet bekendt med det forhold, der berettiger køber til at annullere købet, dog senest to år fra den seneste afhentningsdato efter punkt 12.4. Den købte genstand skal returneres til BRK i samme stand som på hammerslagstidspunktet. Overholdes disse betingelser ikke, mister køber retten til at annullere købet og kan ikke kræve købesummen refunderet. Køber er selv ansvarlig for at betale de omkostninger, der er forbundet med returnering af genstanden.

## 16 INDSIGELSE- OG ANSVARSBEGRÆNSNING

- 16.1 BRK tager forbehold for fejl, tekniske vanskeligheder samt udefrakommende misbrug eller forstyrrende påvirkning under auktionen. Budgetgiver kan ikke rejse noget krav mod BRK som følge heraf.
- 16.2 Køber er i alle tilfælde selv ansvarlig for korrekt betaling af moms og andre afgifter, gebyrer mv. i overensstemmelse med danske og udenlandske regler.
- 16.3 Medmindre andet fremgår af disse købsvilkår, kan BRK aldrig blive ansvarlig for budgetgivers/købers driftstab, avancetab, andre indirekte tab eller følgeskader.

## 17 PERSONDATAPOLITIK

- 17.1 Det er vigtigt for BRK at sikre fortrolighed og sikkerhed omkring budgetgivers/købers personlige oplysninger. Persondatapolitikken fremgår af [bruun-rasmussen.dk](http://bruun-rasmussen.dk).

## 18 KLAGE, TVISTLØSNING OG LOVVALG

- 18.1 Har budgetgiver/køber en klage, kan der altid rettes henvendelse til BRK.
- 18.2 Lykkes det ikke at finde en løsning, kan forbrugere sende en klage til Nævnenes Hus, Toldboden 2, 8800 Viborg, e-mail: [naevneneshus.dk](mailto:naevneneshus.dk). Forbrugere med bopæl i et andet EU-land end Danmark kan klage til EU-Kommissionens online klageportal via hjemmesiden: <http://ec.europa.eu/odr>.
- 18.3 Tvister skal indbringes i Danmark ved Københavns Byret, jf. dog punkt 18.2. I forbrugerforhold gælder de ufravigelige værmetingsregler.

*Jesper Bruun Rasmussen, auktionsholder*

Rev. 08.22

## CONDITIONS OF PURCHASE – LIVE AUCTIONS

These conditions of purchase represent Bruun Rasmussen Kunstauktioner A/S' ("BRK") conditions of purchase for live auctions and are effective from 1 January 2017. BRK may modify the conditions of purchase at any time.

By bidding, the bidder/buyer accepts the current conditions of purchase as they appear on [bruun-rasmussen.dk](http://bruun-rasmussen.dk). The conditions of purchase are applicable to both business owners and consumers.

## BEFORE THE AUCTION

### 1 VALUATION OF ITEMS

- 1.1 All the offered items are valued by BRK. The valuation is an estimate based on the expected hammer price, see paragraph 5.3. The estimate is based on the previous sale of similar items as well as BRK's past experience. The hammer price can therefore be higher or lower than the estimated price.

### 2 DESCRIPTION OF ITEMS

- 2.1 Items up for auction are presented with photographs and descriptions in catalogues and on [bruun-rasmussen.dk](http://bruun-rasmussen.dk). The description is worded according to the best of BRK's knowledge and based on detailed research in accordance with the prevailing views among experts at the time of sale.
- 2.2 The items up for auction are of an age and nature that often mean that they are in a worn, repaired or damaged condition. As a starting point everything is sold as used items. For this reason, the descriptions in the catalogue or at [bruun-rasmussen.dk](http://bruun-rasmussen.dk) do not include a statement regarding the above or the condition of the item.
- 2.3 In some cases, BRK may choose to describe an item's provenance. Such a description is made if a former owner is publicly known and/or if the story of previous ownership sheds further light on the item and its background. In other cases, such information is left out of the description, for instance to meet the seller's wish for privacy.
- 2.4 It is possible that the estimate and description are revised prior to the auction. Changes are published on BRK's website.

### 3 PREVIEW

- 3.1 Items up for auction are presented prior to the auction in one of BRK's showrooms. Potential bidders are encouraged to inspect the items closely and are responsible for determining the condition of the items at these previews, where they also have the opportunity to consult with the valuation experts.
- 3.2 If a potential buyer does not have the opportunity to inspect the item personally, a condition report can be drafted in most cases. The description in this report has been made according to BRK's honest conviction but is not based on scientific studies. A condition report only serves as an identification and is meant as an aid to bidders who do not have the opportunity to inspect the item at the preview.

## DURING THE AUCTION

### 4 THE ROLE OF BRK

- 4.1 The sale of an item is facilitated by BRK on behalf of the seller, and BRK always sells items up for auction at the highest price offered during the bidding round.

- 4.2 Items up for auction can have a reserve price that has been agreed upon with the seller. The price is confidential and the item cannot be sold below this price.

- 4.3 The live auctions are presided over by one of the Danish Ministry of Justice's appointed auctioneers, ensuring that the auctions proceed correctly and lawfully.

## 5 BIDDING

- 5.1 The currency used while the auctions take place is Danish kroner. The approximate amount in euro/US dollars is shown on screens in the saleroom and also on request.
- 5.2 The auctioneer determines the size of the bid increment and the pace of the auction. Bid increments usually rise by 5% - 10% compared to the previous bid. Approximately 50-100 auction lots are sold per hour.
- 5.3 The hammer price refers both to the gavel used by the auctioneer that signifies the end of a bidding round on an item and to the price (bidding amount) that the item up for auction is sold for. See paragraph 7 regarding amounts added to the hammer price.
- 5.4 The buyer is the bidder that submits the highest bid, thereby obtaining the hammer price. At the moment the hammer price is determined, a binding purchase/sale agreement is entered into based on these conditions of purchase.
- 5.5 If bids are made on behalf of others, the bidder serves as surety for the transaction.
- 5.6 Items are purchased in their present state and condition, and regardless of the type of bidding the buyer has no right to cancel his purchase, neither under the Danish Consumer Contracts Act.
- 5.7 Bidders are required, in accordance with BRK's instructions, to identify themselves and document their ability to pay, for instance by registration of a valid debit/credit card, bank guarantee or a deposit.
- 5.8 BRK may refuse to accept a bid if a sufficient guarantee of the bidder's ability to pay is not provided, or if the bidder has previously defaulted on payment obligations on purchases from BRK.
- 5.9 The overseeing auctioneer will, in consultation with the auctioneer at the podium, decide what to do in matters of dispute concerning a bidding round.

## 6 TYPES OF BIDDING

- 6.1 Bidding options:

#### IN PERSON:

Registration and obtaining the bidding paddle take place at the entrance to the saleroom. When the bidder wishes to bid, it is signalled to the auctioneer on the podium by raising the bidding paddle in the air and clearly displaying its number.

#### COMMISSION BIDS:

The intended maximum bid can be submitted via [bruun-rasmussen.dk](http://bruun-rasmussen.dk) until the start of the auction or by e-mail, fax or phone, so that the bid is received no later than 24 hours prior to the start of the auction. A commission agent bids on behalf of the bidder within the limits of the stated maximum bid. The commission agent will always bid the lowest possible amount to achieve the hammer price.

#### TELEPHONE BID:

With certain items it is possible to have a BRK employee call the bidder over the phone. The employee will then bid on behalf of the bidder during the auction. The service can be booked via [bruun-rasmussen.dk](http://bruun-rasmussen.dk) up until three hours before the auction is set to begin.



#### LIVE BIDDING:

It is possible to follow the auction live and bid on the auction lots via [bruun-rasmussen.dk](http://bruun-rasmussen.dk).

#### PRE-AUCTION:

Some live auctions are preceded by an online auction. The highest bids from the online auction then represent the starting bids at the following live auction.

## AFTER THE AUCTION

### 7 AMOUNTS ADDED TO THE HAMMER PRICE

- 7.1 In addition to the hammer price, see paragraph 5.3, the buyer pays a buyer's premium for the individual items as well as the other amounts described below if the conditions for these are applicable. The total amount that the buyer pays to BRK is called the "purchase price".
- 7.1.1 Buyer's Premium: The hammer price always includes an additional fee to BRK. At the live auctions, the fee is 25,6% of the hammer price + VAT of the fee, 32% in total. For stamps and coins, the fee is 20% of the hammer price + VAT of the fee, a total of 25%.
- 7.1.2 "LIVE Bidding": BRK's "LIVE Bidding" software is free to use for bidders on [bruun-rasmussen.dk](http://bruun-rasmussen.dk).
- 7.1.3 Full VAT: Certain items are sold at auction in accordance with the current rules regarding full VAT. In such a situation, a VAT of 25% is imposed on both the hammer price and the buyer's premium. These items are marked in the catalogue and on [bruun-rasmussen.dk](http://bruun-rasmussen.dk) with the symbol "\*\*\*", or with the text: "This item is subject to full VAT".
- 7.1.4 Artist's Resale Right: In accordance with Danish copyright law, a royalty fee covering the Artist's Resale Right has to be charged for works by newer Danish artists, and some foreign artists, who are either alive or have not been dead for more than 70 years. The royalty fee covering the Artist's Resale Right is charged on behalf of VISDA (Visual Rights Denmark). These works are marked "ARR" in the printed catalogue, and on [bruun-rasmussen.dk](http://bruun-rasmussen.dk) the description of the works includes the text: "This lot is subject to the Artist's Resale Right". The royalty fee covering the Artist's Resale Right is added to the hammer price + the buyer's premium (excluding VAT) if the amount exceeds EUR 300, as indicated below:

Hammer price + buyer's premium (ex. VAT)	Payment Rate
300,01 - 50,000 euro	5%
50,000,01 - 200,000 euro	3%
200,000,01 - 350,000 euro	1%
350,000,01 - 500,000 euro	0.5%
over 500,000 euro	0.25%

The royalty fee covering the Artist's Resale Right cannot exceed EUR 12,500 (excluding VAT) for each item. The fee must be paid in Danish kroner, and the conversion rate (EUR/DKK) is set by VISDA.

- 7.1.5 Debit/Credit Card Fee: Amounts Added to the Hammer Price: BRK reserves the right to charge the debit/credit card fees imposed by the payment services companies. The rates will appear when bidding on [bruun-rasmussen.dk](http://bruun-rasmussen.dk) and at payment.

### 8 PAYMENT DEADLINE

- 8.1 The purchase price falls due after the hammer price has been determined, and then the buyer has eight days to pay BRK the purchase price.

### 9 PAYMENT METHODS

- 9.1 The payment can be made in the following ways:
- A: With debit/credit card (Visa, MasterCard, Maestro, Diners Club, China UnionPay and JCB) or cash (up to DKK 19.999) in the saleroom or subsequently at one of

BRK's locations. Please note that we do not accept EUR 500 banknotes.

- B: With debit/credit card (Dankort, Visa, MasterCard, Diners Club and JCB) via BRK's website on the buyer's personal page.
- C: By bank transfer into BRK's account with Danske Bank: 4183 4310970638 - Swift/BIC: DABADKKK - IBAN: DK4130004310970638.

### 10 VAT EXEMPTION, PAYMENT & DEPOSIT

- 10.1 Some buyers can choose which type of VAT should apply to the transaction. The choice has to be communicated to BRK no later than two working days after the purchase and cannot be changed subsequently.
- A: Businesses in Denmark registered for VAT can decide that the transaction is to be conducted in accordance with the rules for full VAT, see paragraph 7.1.3.
- B: Businesses registered for VAT in another EU Member State can be exempted from paying Danish VAT if it can be proved that the item has been transported to the foreign address that the buyer has registered with BRK and which is written on the invoice. In such cases, the VAT should be settled according to the rules applicable in the country where the buyer is registered for VAT. It is advisable to consult with the local authorities. The buyer can decide not to be exempt from regular VAT and instead pay Danish VAT on second-hand goods/full VAT.
- C: Buyers residing outside the EU can be exempted from Danish VAT if it can be proved that the item has been transported out of the EU. To the extent possible and for a fee, BRK can issue the necessary export documents for the customs authorities. The buyer may decide not to be exempt from regular VAT and instead pay Danish VAT on second-hand goods/full VAT.
- 10.2 Companies registered for VAT in another EU Member State and buyers residing outside the EU must deposit the Danish VAT on the amount invoiced with BRK until the export process has been completed in a documented, lawful fashion. If the export is undertaken by one of BRK's authorized forwarding agents, the VAT does not have to be deposited. See the list of authorized forwarding agents on [bruun-rasmussen.dk](http://bruun-rasmussen.dk).

### 11 OVERDUE PAYMENTS

- 11.1 If payment is made after a deadline, including the deadline specified in paragraph 8, interest on overdue payments will be charged and estimated in accordance with the Danish Central Bank's official lending rate + 8% per year on the amount due.
- 11.2 If the purchase price, including interest, has still not been paid ten days after the demand for payment has been made, BRK is entitled to seek the purchase price paid by making a set-off against the deposit/by drawing on the bank guarantee or to cancel the purchase.
- 11.3 If the purchase is cancelled, BRK is entitled to sell the item at a new auction and demand the costs and any difference between the new and the earlier hammer price (including the buyer's premium) covered by the defaulting buyer.
- 11.4 In addition to debt collection, BRK may seek recovery of all due claims (including costs) not paid in a timely manner in the following ways:
- A: Making the buyer cover the costs of selling items consigned to auction by or on behalf of the buyer. The sale can be conducted without regard to an agreed reserve price. Items consigned for auction cannot be collected as long as overdue debts are unpaid.
- B: Seizing the buyer's remaining balance with BRK, including the balance from the sale of items consigned by or on behalf of the buyer, regardless of whether such receivables derive from auction sales prior to or after the date of the buyer's default on the payment.

### 12 PICK-UP & COLLECTION

- 12.1 The title to a purchased item passes to the buyer when the full purchase price, including any interest and fees, has been paid, and only then can the collection of an item take place.
- 12.2 In connection with the collection of a purchased item, BRK reserves the right to demand satisfactory documentation that the person who wants to pick up the item is either the buyer himself/herself or authorized by the buyer to receive the item on his/her behalf.
- 12.3 The collection of certain weapons requires presentation of a valid weapons certificate. Items with such requirements are listed with the text: "The purchase of this item requires the presentation of a valid weapons certificate" in the catalogue and on [bruun-rasmussen.dk](http://bruun-rasmussen.dk).
- 12.4 Purchased items are stored after the auction at the buyer's expense and risk. Pick-up must take place no later than eight working days after the last auction day.
- 12.5 If the item(s) is/are not picked up on time, the purchased items will be transported to a warehouse at the buyer's risk and expense. The transport costs are DKK 150 including VAT per item and the storage costs are DKK 150 including VAT per item for each week or part of a week. If an item is left unclaimed for an amount of time that results in the storage costs exceeding the value of the item, BRK will be entitled to, at the buyer's expense and risk and without regard to the reserve price, sell the item at an auction or privately. The buyer is still liable for the costs of transportation and storage not covered by such sale.
- 12.6 In accordance with current anti-money laundering laws, the buyer must in certain cases submit personal information and present a photo ID to BRK before the buyer can have the purchased item placed in his possession.

### 13 SHIPPING

- 13.1 If the buyer is unable to pick up the purchased item, BRK offers to pack and arrange delivery either by mail or by freight forwarder at the buyer's risk and expense. See paragraph 12.2 regarding identification.

### 14 EXPORT LICENSE

- 14.1 To ensure that Danish cultural heritage of vital importance remains in Denmark, the Danish Cultural Assets Commission can place an export ban on certain items. If the buyer wishes to export an item that is subject to an export ban in Denmark, the purchase will be cancelled and the Danish Cultural Assets Commission is obliged to acquire ownership of the item for the price obtained at auction. The buyer cannot raise any claims against BRK as a result of an export ban.
- 14.2 Certain items are included in the Washington Convention, also known as CITES. The purpose of CITES is to stop the trade of items made with endangered species and flora. If the item is included in the Washington Convention, CITES, Appendix 1, this will appear in the description of the item on [bruun-rasmussen.dk](http://bruun-rasmussen.dk) and be marked with the symbol "☉" in the catalogue. The following rules are applicable:
- A: Items that are included in the Washington Convention, CITES, Appendix 1, can only be traded when a dispensation in the form of a CITES certificate has been obtained. BRK obtains the required certificate from the Danish Nature Agency that allows trade and export to countries within the EU. Items that were produced before 1947 can, however, be freely traded within the EU without a certificate.
- B: It is only items included in the Washington Convention, CITES, Appendix 1 that are marked individually on [bruun-rasmussen.dk](http://bruun-rasmussen.dk) and in our catalogue. Items included in the Washington Convention, CITES, Appendix 2, which can be freely sold and transported within the EU, are not individually marked.
- C: Export to countries outside the EU must, regardless of the year of the item's production, always procure a CITES re-export permit from the Danish Nature Agency if the item is included in the Washington Convention, Appendix 1 and 2. This export permit can usually be

obtained without problems, if the item is either sold with a CITES certificate or was made prior to 1947. Appendix 2 items usually also receive a re-export permit without problems. Any fees charged by the Danish authorities in connection with the issuance of a re-export permit will be added to the buyer's invoice.

D: In connection with export to other countries outside the EU, special rules may apply concerning the subsequent import, and the buyer is encouraged to consult the relevant local authorities about this issue.

### 15 DEFECTS IN THE PURCHASED ITEMS

- 15.1 The lack of conformity rules of the Danish Sale of Goods Act may apply. Below is a non-exhaustive excerpt of the buyer's remedies in regard to lack of conformity.
- 15.2 The buyer is entitled to cancel a purchase if the description contained significant errors that have led to a higher hammer price than a correct description would have resulted in. In such cases, the total purchase price will be refunded. The buyer cannot demand payment of interest on the purchase price or demand payment of any other expenses or losses.
- 15.3 A purchase cannot be cancelled and the buyer cannot demand a refund of the purchase price or raise any other claims against BRK if the description of the item is in compliance with paragraph 15.2. The same applies if evidence of forgery has required the use of scientific methods that were either not available at the time of sale, were excessively costly to use or led to the damage of the item in question.
- 15.4 Claims for a cancellation of a purchase must be notified to BRK when the buyer has discovered the fact that entitles the buyer to cancel the purchase. This notice, however, has to be given no later than two years after the final pick-up date according to paragraph 12.4. The item purchased must be returned to BRK in the same condition as it was on the day it was sold at auction. If these conditions are not met, the buyer loses the right to cancel the purchase and cannot claim a refund of the purchase price. The buyer is responsible for paying the costs associated with the return of the item.

### 16 OBJECTIONS & LIMITATIONS OF LIABILITY

- 16.1 BRK is aware that errors, technical difficulties and external abuse or disruptive influences may occur during the auction. Bidders cannot raise any claims against BRK as a result of such events.
- 16.2 The buyer is always responsible for the correct payment of VAT and other costs, fees etc. in accordance with Danish and foreign regulations.
- 16.3 Unless otherwise stated in these conditions of purchase, BRK may never be held liable for bidders'/buyers' operating loss, loss of profits, other indirect losses or consequential loss.

### 17 PRIVACY POLICY

- 17.1 It is important to BRK to ensure confidentiality and security regarding the bidder's/buyer's personal information. The privacy policy can be found on [bruun-rasmussen.dk](http://bruun-rasmussen.dk).

### 18 COMPLAINTS, DISPUTE RESOLUTION AND APPLICABLE LAW

- 18.1 BRK can always be contacted if the bidder/buyer has a complaint.
- 18.2 If the dispute cannot be resolved, the consumer can submit a complaint to the Complaint Resolution Centre, Nævnenes Hus, Toldboden 2, 8800 Viborg, Denmark, email: [naevneshus.dk](mailto:naevneshus.dk). Consumers residing in another EU country than Denmark can submit their complaint to the European Commission's Online Dispute Resolution platform via the website: <http://ec.europa.eu/odr>.
- 18.3 In Denmark, disputes must be brought before the City Court of Copenhagen, but see paragraphs 18.2. The mandatory rules on jurisdiction apply to consumer interests.

*Jesper Bruun Rasmussen, Auctioneer*

*The above is an English translation of the Danish version of the Conditions of Purchase. In case of a dispute, only the Danish version of the present Conditions of Purchase of Bruun Rasmussen is valid.*

## ADDRESSES

### BRUUN RASMUSSEN AUCTIONEERS

#### COPENHAGEN – BREDGADE

BREDGADE 33, DK-1260 COPENHAGEN K  
+45 8818 1111 / info@bruun-rasmussen.dk

#### COPENHAGEN – SUNDKROGSGADE

SUNDKROGSGADE 30, DK-2150 NORDHAVN  
+45 8818 1111 / info@bruun-rasmussen.dk

#### GLOSTRUP

PAUL BERGSØES VEJ 20B, DK-2600 GLOSTRUP  
+45 8818 1111 / info@bruun-rasmussen.dk

#### AARHUS

SØREN FRICHS VEJ 34D, DK-8230 ÅBYHØJ  
+45 8818 1100 / aarhus@bruun-rasmussen.dk

#### FYN

NICK MESSMANN  
+45 8818 1232 / nic@bruun-rasmussen.dk

#### REPRESENTATIVES

##### FRANCE & BELGIUM

DITTE HERBORG KROGH · PARIS  
+33 6 6185 4564 / dhk@bruun-rasmussen.dk

##### SOUTHERN FRANCE & LUXEMBOURG

PETER KOCH  
+45 4045 3403 / p.koch@bruun-rasmussen.dk

##### GERMANY

NICK MESSMANN  
+45 8818 1232 / nic@bruun-rasmussen.dk

##### USA

BENEDICTE HALLOWELL  
+1 617 566 7333 / b.hallowell@bruun-rasmussen.dk

## CONTACT DIRECTLY

### KONTAKT DIREKTE

#### HOVEDNUMMER / MAIN NUMBER

Bruun Rasmussen Auctioneers +45 8818 1111

#### ADMINISTRATION

Jakob Dupont, CEO +45 8818 1081  
dupont@bruun-rasmussen.dk

#### KUNDESERVICE / CUSTOMER SERVICE

kundeservice@bruun-rasmussen.dk +45 8818 1010  
customerservice@bruun-rasmussen.dk +45 8818 1010

#### KOMMISSIONER / COMMISSIONS

Lise Winther Wobido +45 8818 1013  
Anja Bering Hansen +45 8818 1028  
bids@bruun-rasmussen.dk

#### BESTILLING AF KATALOGER / CATALOGUE REQUESTS

Kundeservice / Customer service +45 8818 1111

#### AUKTIONS RÅDGIVNING / AUCTION GUIDANCE

Franziska Kampmann +45 8818 1026  
fka@bruun-rasmussen.dk

#### SHIPPING

shipping@bruun-rasmussen.dk +45 8818 1055

#### VURDERING OG INFORMATION / VALUATION AND INFORMATION

##### INDBOVURDERINGER / VALUATION AT YOUR HOME

Liselotte Toxværd Møller +45 8818 1234  
ltm@bruun-rasmussen.dk

Hans Ruben +45 8818 1231  
hru@bruun-rasmussen.dk

Ralph Lexner +45 8818 1161  
rl@bruun-rasmussen.dk

Kasper Nielsen +45 8818 1121  
kn@bruun-rasmussen.dk

##### ARMBÅNDSURE / WRISTWATCHES

Vilhelm Islandi Bramsen +45 8818 1239  
vib@bruun-rasmussen.dk

##### BØGER / BOOKS

Emma Marie Poulsen +45 8818 1217  
emp@bruun-rasmussen.dk

##### FRIMÆRKER / STAMPS

Christian Grundtvig +45 8818 1214  
cg@bruun-rasmussen.dk

##### MØNTER / COINS

Michael Märcher +45 8818 1202  
mm@bruun-rasmussen.dk

#### MODERNE DESIGN / MODERN DESIGN

Peter Kjelgaard Jensen +45 8818 1191  
pkj@bruun-rasmussen.dk

#### MODERNE KUNST / MODERN ART

Niels Raben +45 8818 1181  
nr@bruun-rasmussen.dk

Niels Boe-Hauggaard +45 8818 1182  
nbh@bruun-rasmussen.dk

#### MODERNE SØLV / MODERN SILVER

Amalie Hansen +45 8818 1194  
amh@bruun-rasmussen.dk

#### PORCELÆN, GLAS OG ASIATISK KUNST / CERAMICS, GLASS AND ASIAN ART

Ralph Lexner +45 8818 1161  
rl@bruun-rasmussen.dk

Line Hjorth Langkjær +45 8818 1166  
lla@bruun-rasmussen.dk

#### RUSSISK KUNST / RUSSIAN ART

Martin Hans Borg +45 8818 1128  
mhb@bruun-rasmussen.dk

#### SMYKKER / JEWELLERY

Katrin Mikkelsen Sørensen +45 8818 1174  
kms@bruun-rasmussen.dk

#### TÆPPER / CARPETS

Henrik Schleppegrell +45 8818 1145  
hsc@bruun-rasmussen.dk

#### VIN / WINE

Thomas Rosendahl Andersen +45 8818 1206  
tra@bruun-rasmussen.dk

#### VÅBEN / WEAPONS

Ralph Lexner +45 8818 1161  
rl@bruun-rasmussen.dk

#### ÆLDRE KUNST / FINE ART

Julie Arendse Voss +45 8818 1123  
jav@bruun-rasmussen.dk

Birte Stokholm +45 8818 1122  
bst@bruun-rasmussen.dk

#### ÆLDRE MØBLER / FURNITURE

Henrik Schleppegrell +45 8818 1145  
hsc@bruun-rasmussen.dk

Anders Fredsted +45 8818 1142  
afr@bruun-rasmussen.dk

#### ÆLDRE SØLV / SILVER

Heidi Schophuus Jensen +45 8818 1163  
hsj@bruun-rasmussen.dk

## COMMISSION BIDS

### KOMMISSIONSBUD

It is possible to leave commission bids if you can not be present at the auction yourself. This service is free of charge.

When leaving a commission bid, you are instructing our customer service to bid up to a specified amount on your behalf.

The situation can occur that another buyer has already bid the same as you were prepared to. Are you then willing to bid further? If not the lot will be sold to another buyer.

If you do not wish to exceed your bid then write "Max", for maximum, next to the amount. You can also allow us to raise your bid by approx. 15% or approx. 25%.

The hammer price may be higher or lower than the estimated price, so it is possible to buy below the estimate. Bruun Rasmussen will always buy at the lowest price possible, as if you yourself had been present at the auction.

All commission bids are strictly confidential.

Commission bids must be submitted no later than **24 hours** prior to the start of the auction.

#### HOW TO MAKE A COMMISSION BID:

Complete the commission form with all pertinent information.

Indicate the lot number.

Indicate the amount you are prepared to bid.

Should this amount be the absolute maximum, please write "Max" in the appropriate column.

You can also allow us to bid by up to approx. 15% or approx. 25% more by indicating so.

Sign the commission form and make sure that Bruun Rasmussen receives it **24 hours** prior to the start of the auction.

If the information should be insufficient, Bruun Rasmussen can abstain from bidding. Bruun Rasmussen can not be held responsible for error in bidding or failure to execute bids.

#### INTERNET:

Commission bids can be submitted via website [bruun-rasmussen.dk](http://bruun-rasmussen.dk) directly from the page with the item you want to submit a bid for.

Deadline for submissions of bids via the website is **3 hours** prior to the start of the auction.

Submitted bids are shown under "Your bids" when you are logged in. Please contact technical support on +45 8818 1114 for questions about the registration and submission of bids on the website.

For additional information, please consult "Conditions of Purchase" §1.

#### TELEPHONE BIDDING:

Should you wish to bid at auction by telephone, please inform Bruun Rasmussen of your name and telephone number, as well as which catalogue numbers you are interested in, no later than **3 hours** prior to the start of the auction. You will then be contacted shortly before the relevant lot comes under the hammer, thereby allowing you to participate without being in the auction room yourself.

For additional information, please consult "Conditions of Purchase" §1.

Det er muligt at afgive kommissionsbud, hvis De ikke selv kan være til stede på auktionens dag. Denne service er gratis.

Når De afgiver en kommission, beder De vores kundeservice på Deres vegne byde op til et af Dem bestemt beløb i hammerslag.

Der kan opstå den situation, at en anden køber allerede har budt det beløb, som De ønsker at afgive. Er De da villig til at gå et bud højere eller er De indforstået med at nummeret sælges til anden side?

Ønsker De ikke at byde højere så skriv "Max" ud for beløbet. Er De i tvivl om hvor højt De vil byde, kan De hæve budet med op til ca. 15% eller ca. 25%.

Salgsprisen kan blive højere eller lavere end vurderingen, så der er også mulighed for at købe til under den angivne vurdering. Vor kundeservice køber altid så billigt som muligt til Dem, som havde De selv været tilstede på auktionen.

Alle kommissioner behandles strengt fortroligt.

Kommissionsbud skal være Bruun Rasmussen i hænde senest **24 timer** før auktionens start.

#### SÅDAN BYDER DE:

Udfyld blanketten kommissionsbud med alle oplysninger.

Angiv katalognummer.

Angiv beløbet De ønsker at byde.

Er dette Deres absolutte maximum bedes De anføre "Max" i kolonnen.

De kan også forhøje Deres bud med henholdsvis ca. 15% eller ca. 25%, ved at indikere dette i kolonnen.

De bedes underskrive kommissionsblanketten og sikre Dem, at Bruun Rasmussen modtager den senest **24 timer** før auktionens start.

Hvis Deres oplysninger ikke er tilstrækkelige, kan Bruun Rasmussen undlade at byde for Dem, ligesom Bruun Rasmussen ikke kan gøres ansvarlig for fejl ved budgivningen.

#### INTERNET:

Kommissionsbud kan afgives på hjemmesiden [bruun-rasmussen.dk](http://bruun-rasmussen.dk) direkte fra siden med den effekt, De ønsker at byde på.

Seneste afgivelse af bud via hjemmesiden er **3 timer** før auktionens start.

Afgivne bud kan ses på hjemmesiden under "Deres bud", når de er logget ind. Kontakt teknisk support på 8818 1114 for spørgsmål om registrering og budgivning via internettet.

For yderligere information, se "Købskonditioner", §1.

#### TELEFONBUD:

Såfremt De ønsker at byde pr. telefon, bedes De oplyse Bruun Rasmussen Deres navn og telefonnummer samt hvilke katalognumre, De ønsker at byde på, senest **3 timer** før auktionens start. De vil så blive ringet op kort før, den aktuelle vare kommer under hammeren, og De kan på denne måde deltage i auktionen uden selv at være til stede.

For yderligere information, se "Købskonditioner" på [bruun-rasmussen.dk](http://bruun-rasmussen.dk) under "Guide".

## COMMISSION BIDS

### KOMMISSIONSBUD

BREDGADE

Skal være Bruun Rasmussen i hænde senest **24 timer** før auktionens start.  
*Must be submitted no later than 24 hours prior to the start of the auction.*

AUKTION NR AUCTION NO: **912**

Navn Name: \* .....

Adresse Address: \* .....

Postnr./by City: \* .....

Land Country: \* ..... Fax: .....

Tel: \* .....

e-mail: ..... CVR-nr. VAT No.: .....

Bank: ..... Konto nr. Acct. No.: .....

Adresse Address: .....

Postnr./By City: ..... Land Country: .....

Tel: ..... Kontaktperson Contact: .....

Obligatoriske felter er mærket med en stjerne \* *Mandatory fields are marked with an asterisk \**

Undertegnede giver hermed fuldmagt til Bruun Rasmussen Kunstauktioner A/S om på mine vegne at købe nedennævnte katalognumre så fordelagtigt som muligt, inden for det af mig anførte beløb, i hammerslag.  
*I hereby request that Bruun Rasmussen bid on my behalf on the following lots up at the prices indicated below.*

Undertegnede har udfyldt ovennævnte med de ønskede oplysninger, samt har accepteret købskonditionerne.  
*The undersigned has supplied the required information and agrees to be bound by the conditions of purchase.*

Signatur: \* ..... B.R. kunde-nr. Client No.: .....

Jeg ønsker at modtage salgsresultater på de emner jeg har budt på via email  dagligt  efter auktion  
*I wish to receive sales results on the items I have been bidding on via e-mail every day after the auction*

på e-mail adressen *on this e-mail address:* .....

Katalog nr. Lot. No.	Beskrivelse Description	Bud kr. Bid DKK	Max	+15%	+25%

#### BRUUN RASMUSSEN KUNSTAUKTIONER A/S

Bredgade 33 · DK-1260 København K · Tel +45 8818 1111 · Fax +45 8818 1112 · [bids@bruun-rasmussen.dk](mailto:bids@bruun-rasmussen.dk) · [bruun-rasmussen.dk](http://bruun-rasmussen.dk)

Fortsættes næste side *Please turn over*



 ANTIQUES

