

Michigan Technological University
Information Technology Services

Computer Laptop, Lab, and Software Usage Statistics

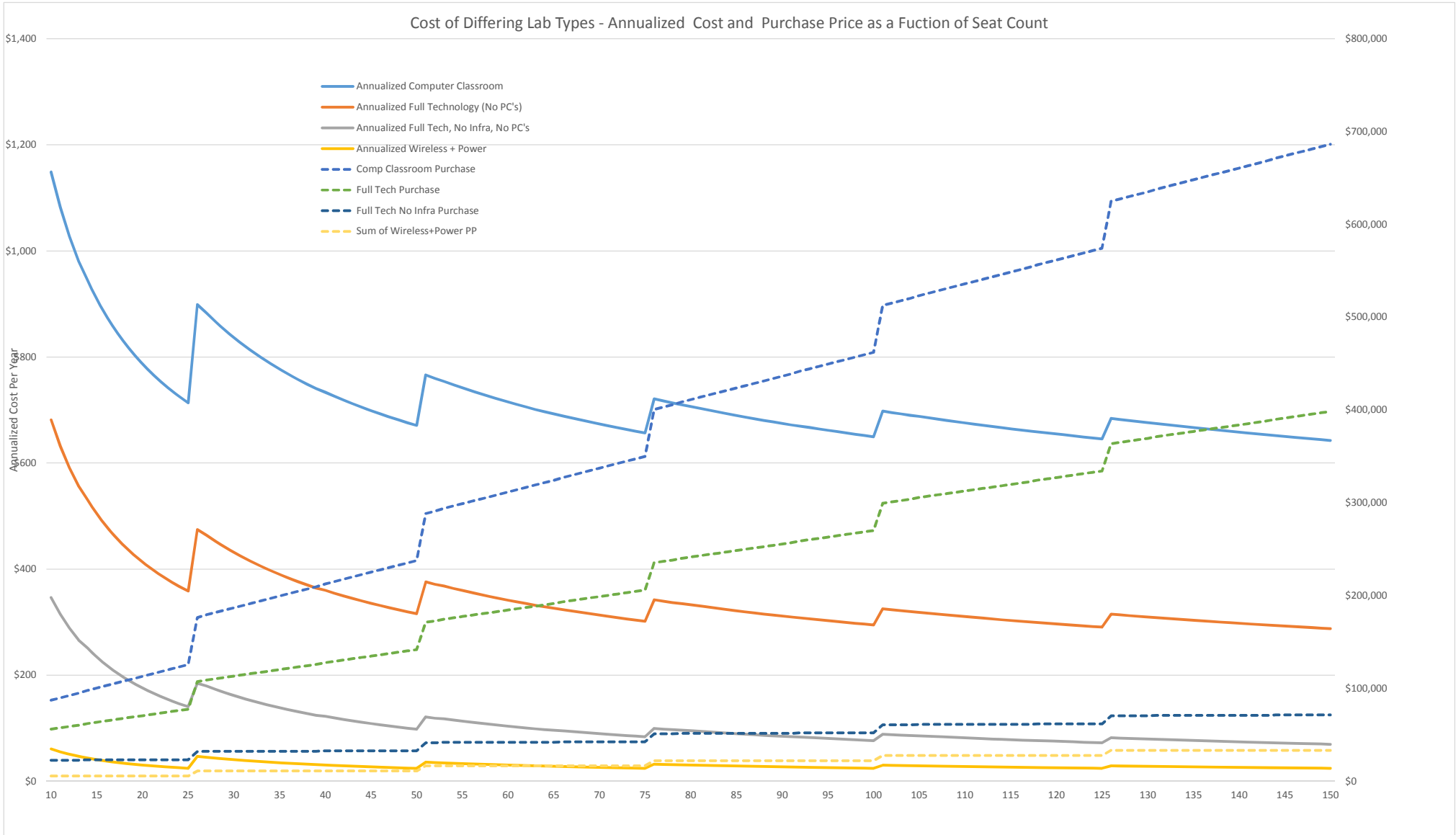
January 2014

Computer Classroom and Lab Costs

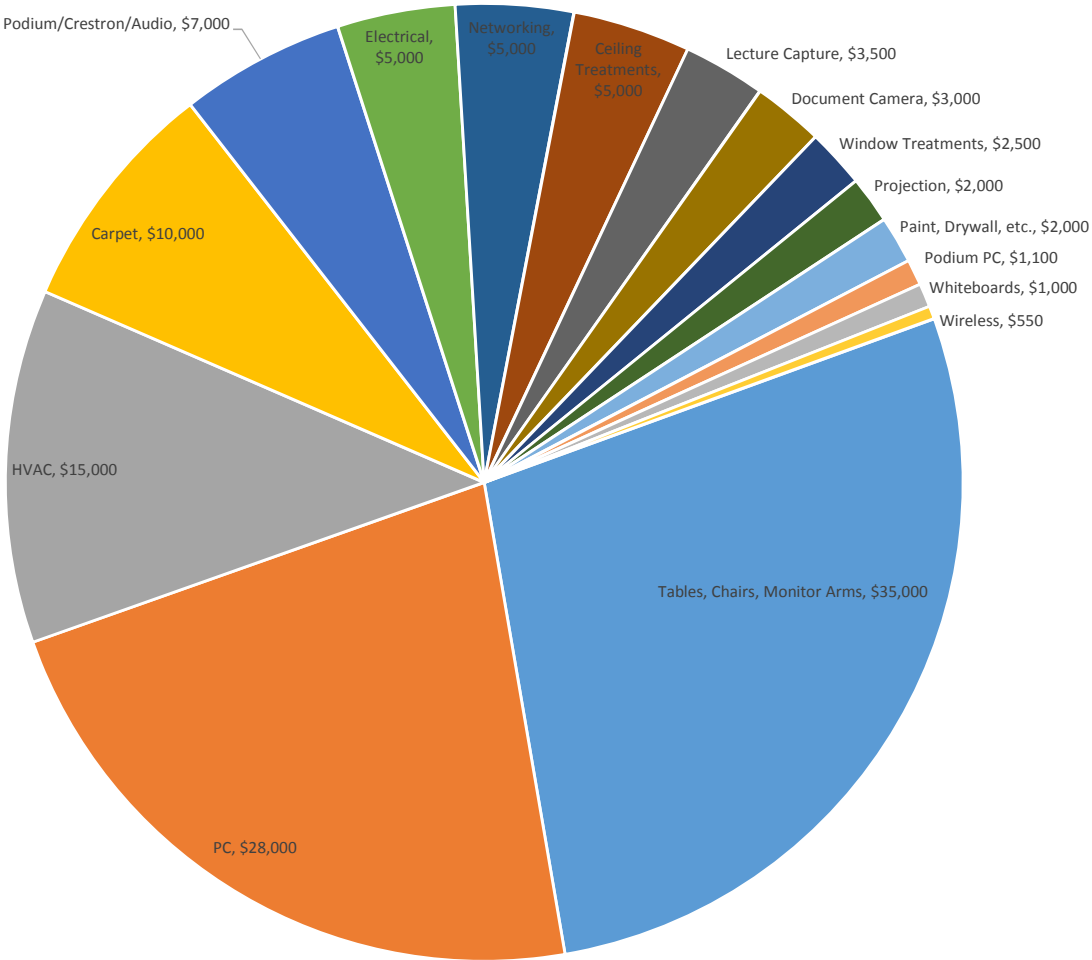
Lab Parts

Carpet
Ceiling Treatments
Document Camera
Electrical
HVAC
Lecture Capture
Networking
Paint, Drywall, etc.
PC
Podium PC
Podium/Crestron/Audio
Projection
Security, Strikes
Tables, Chairs, Monitor Arms
Whiteboards
Window Treatments
Wireless

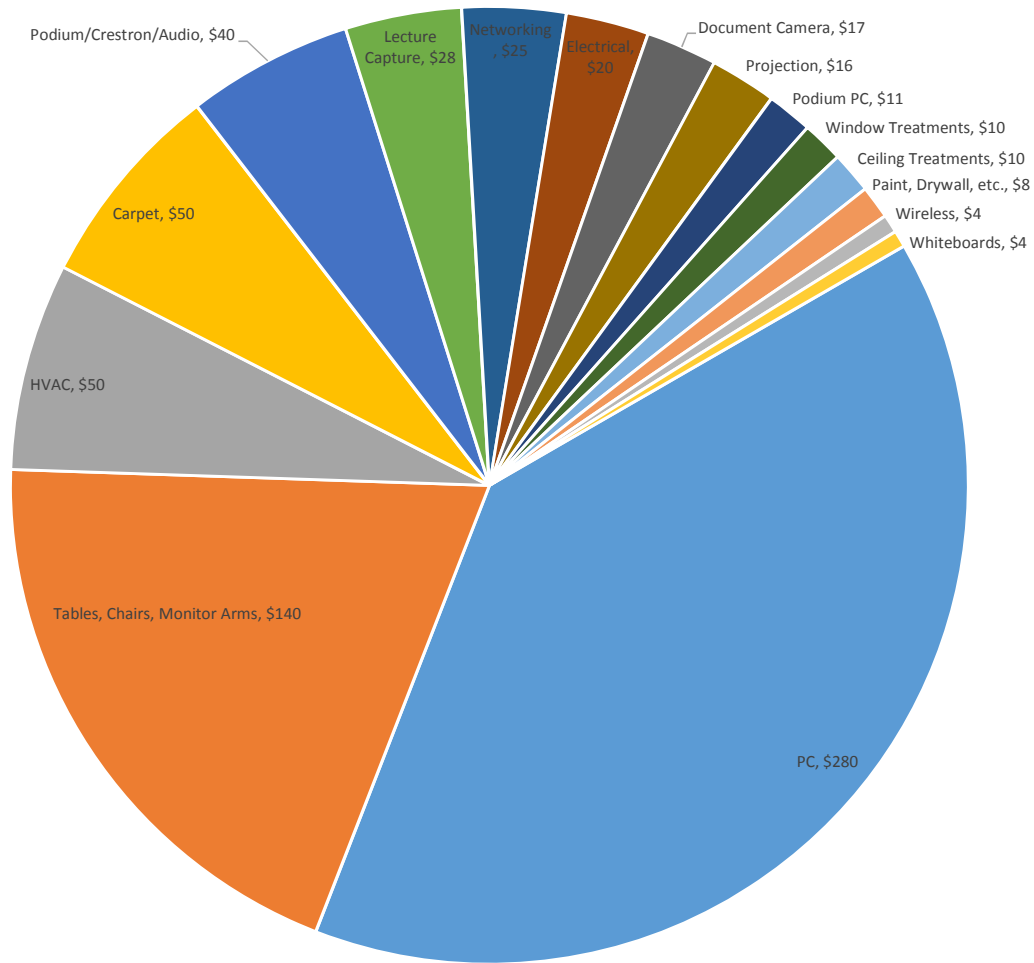
Cost of Differing Lab Types - Annualized Cost and Purchase Price as a Fuction of Seat Count

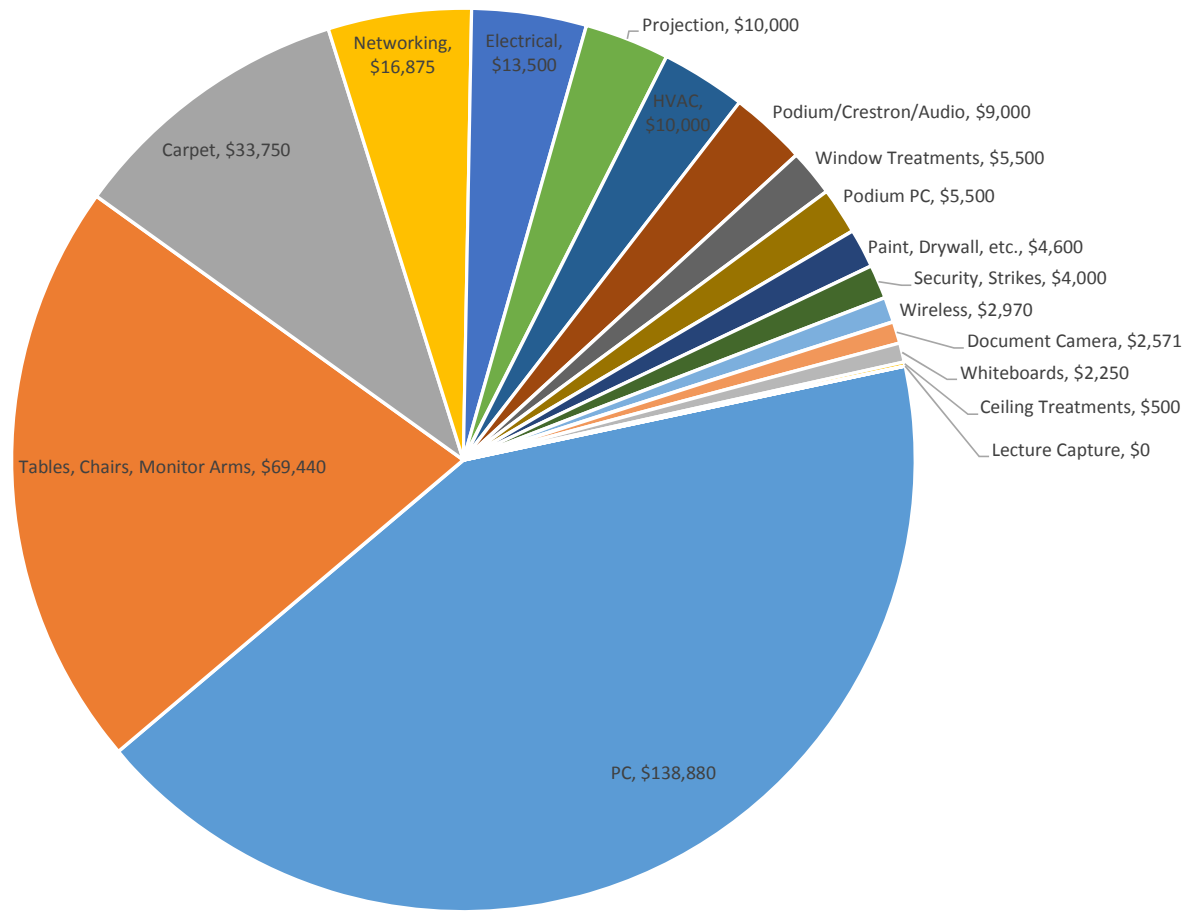


Full Computer Classroom (25 Seats) Cost Breakdown (\$125,650)

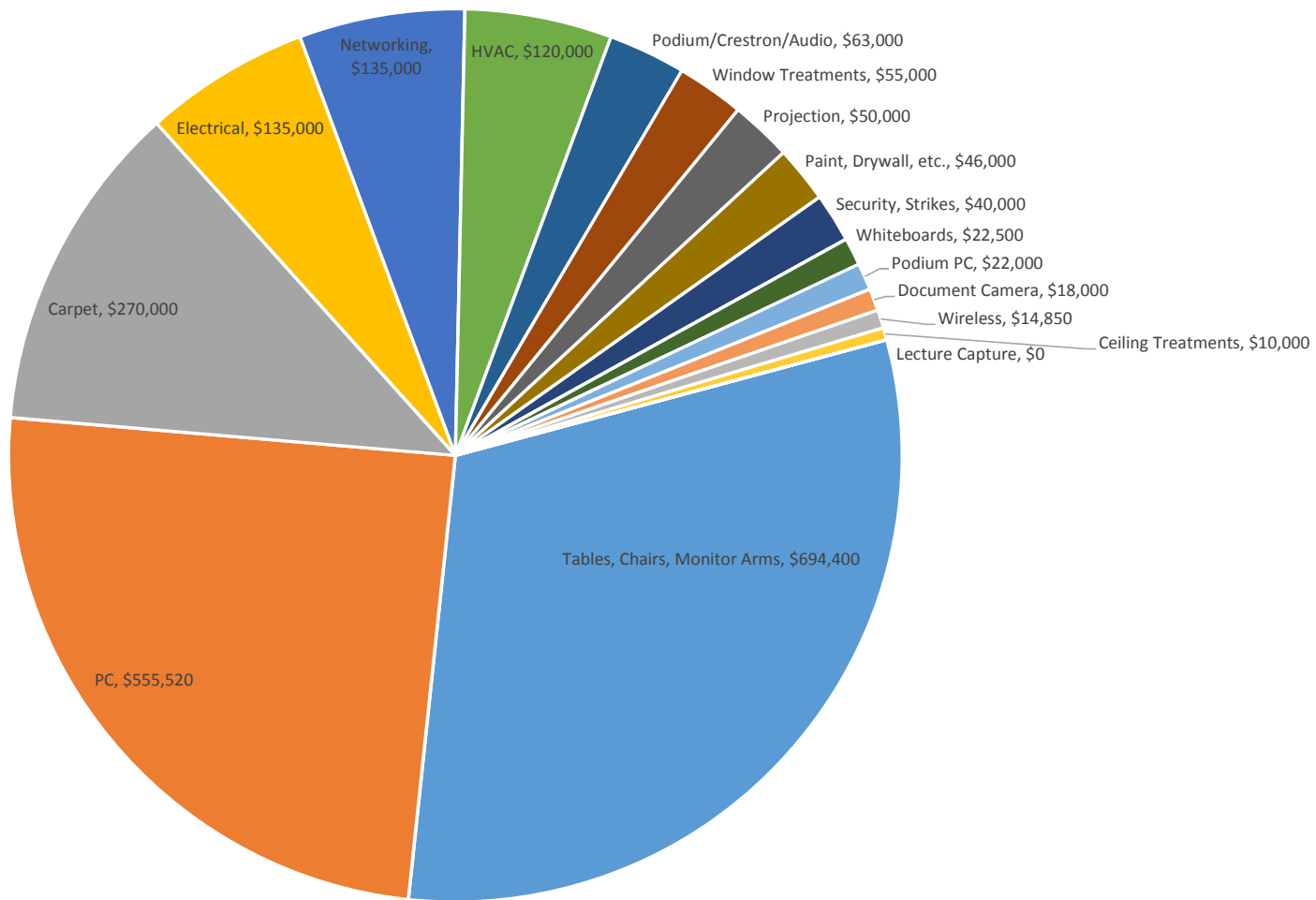


Full Computer Classroom (25 Seats) Annualized Cost Breakdown (\$714)



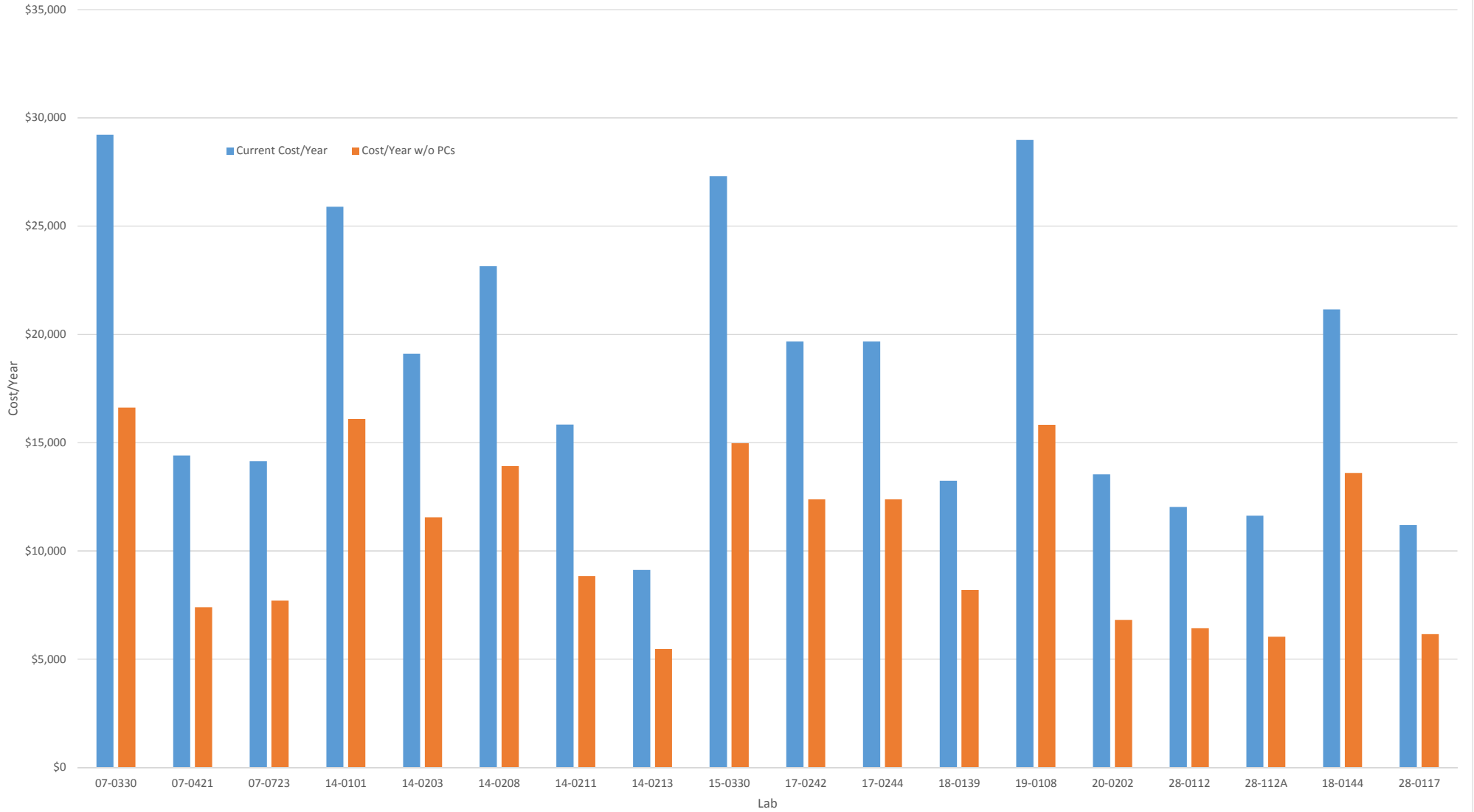


Current Annual Cost of Campus Computer Classrooms - 496 Seats (\$329,336/Year)

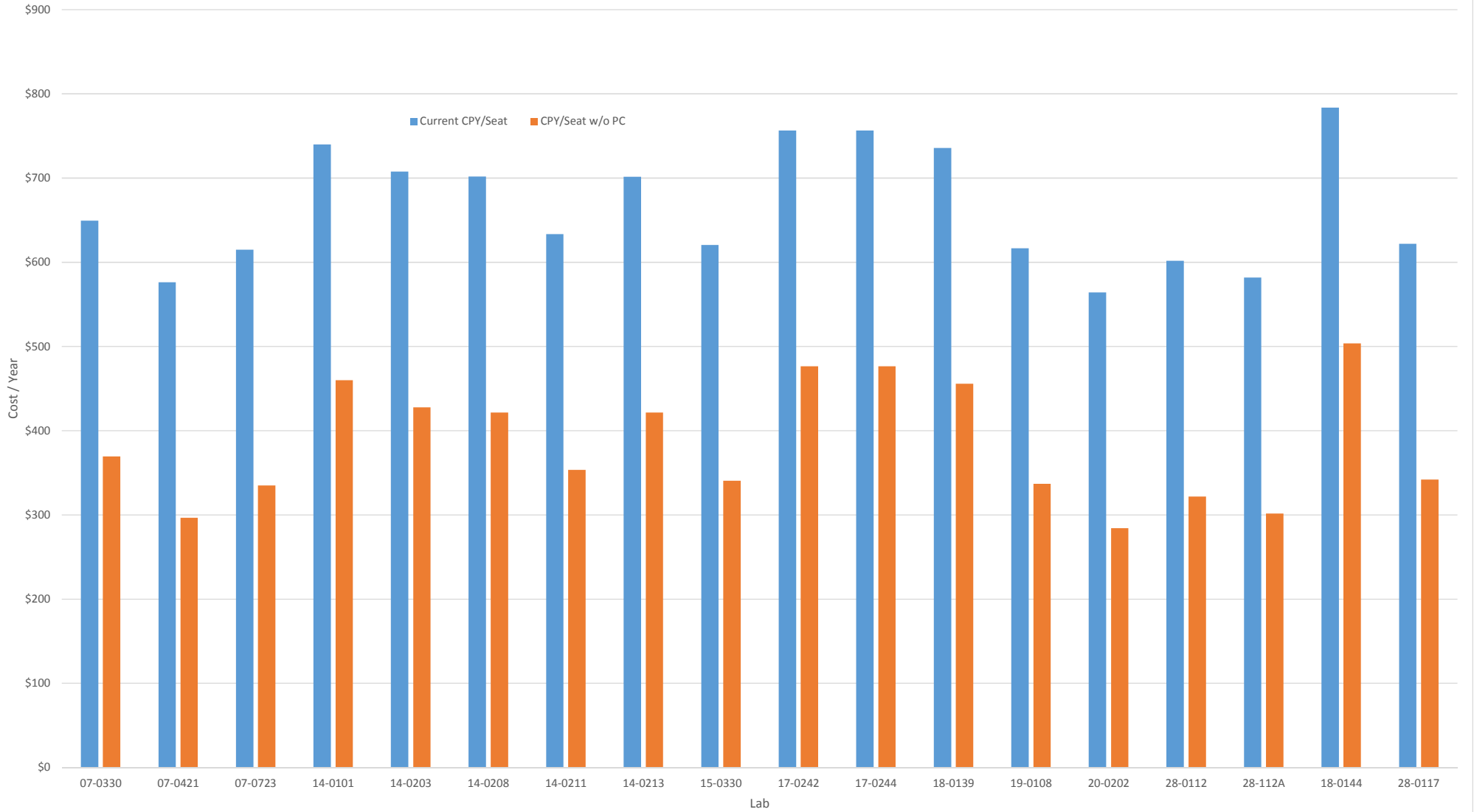


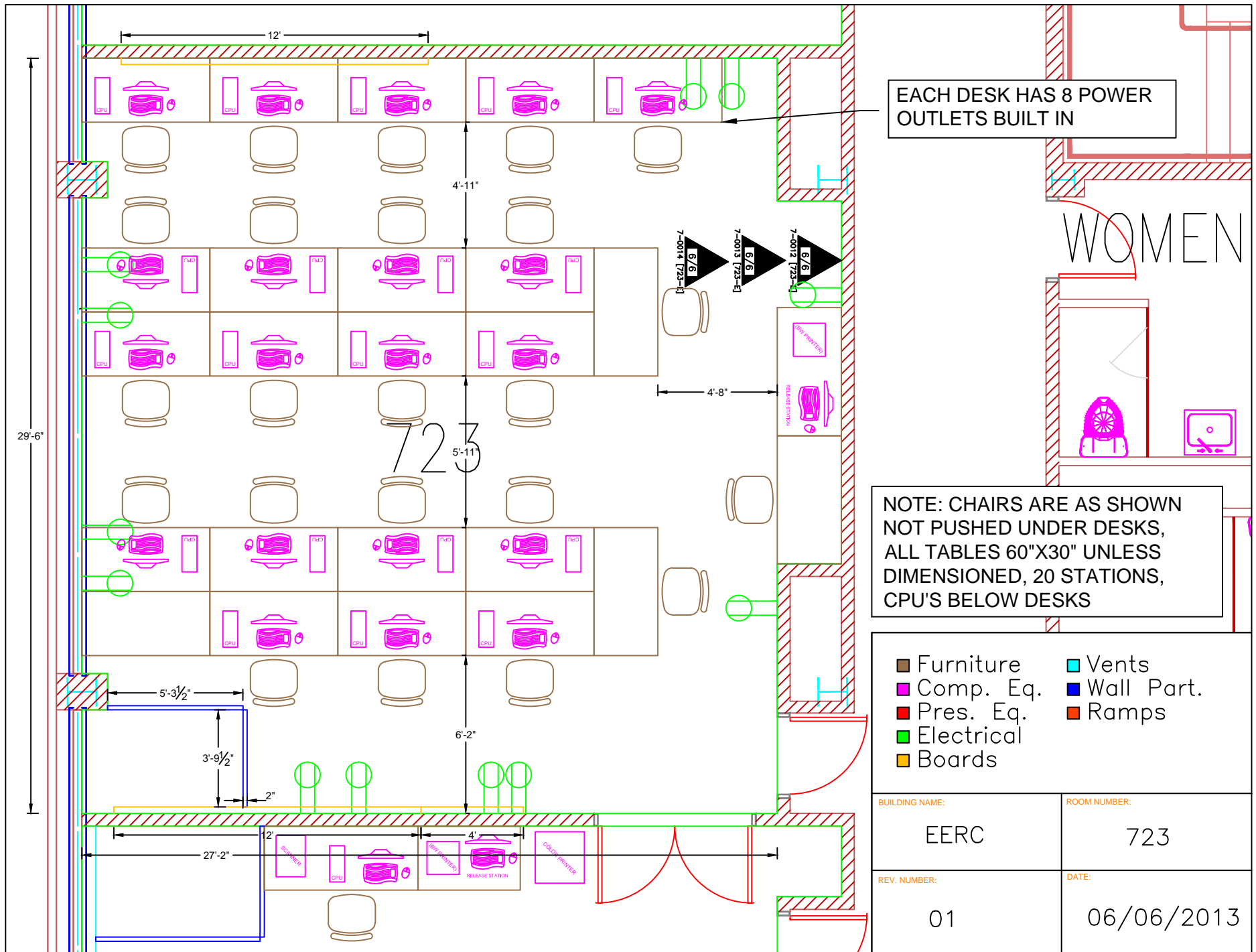
Current "rebuild cost" of Campus Computer Classrooms - 496 Seats

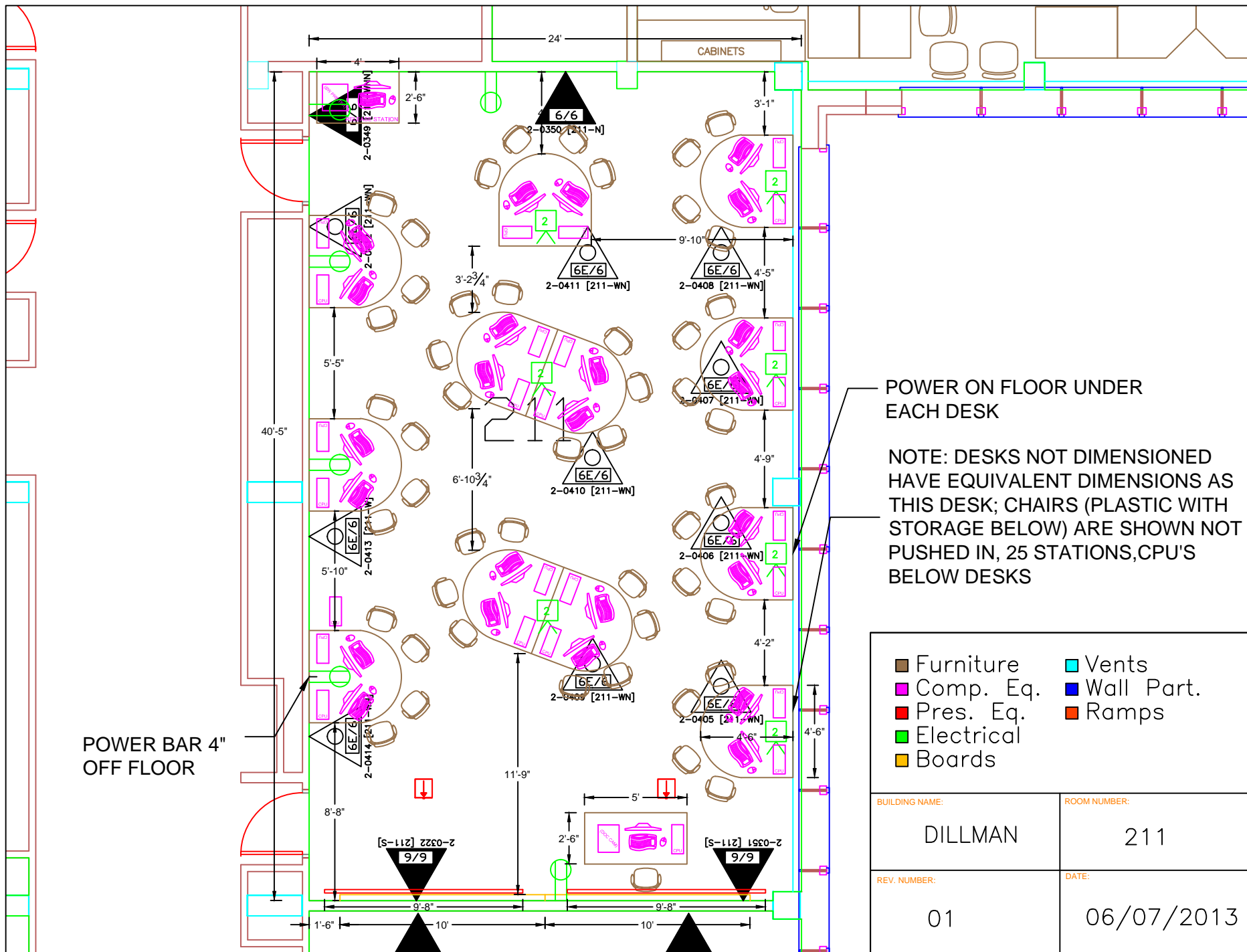
Annualized Cost Per Computer Classroom



Annualized Cost Per Lab Per Seat







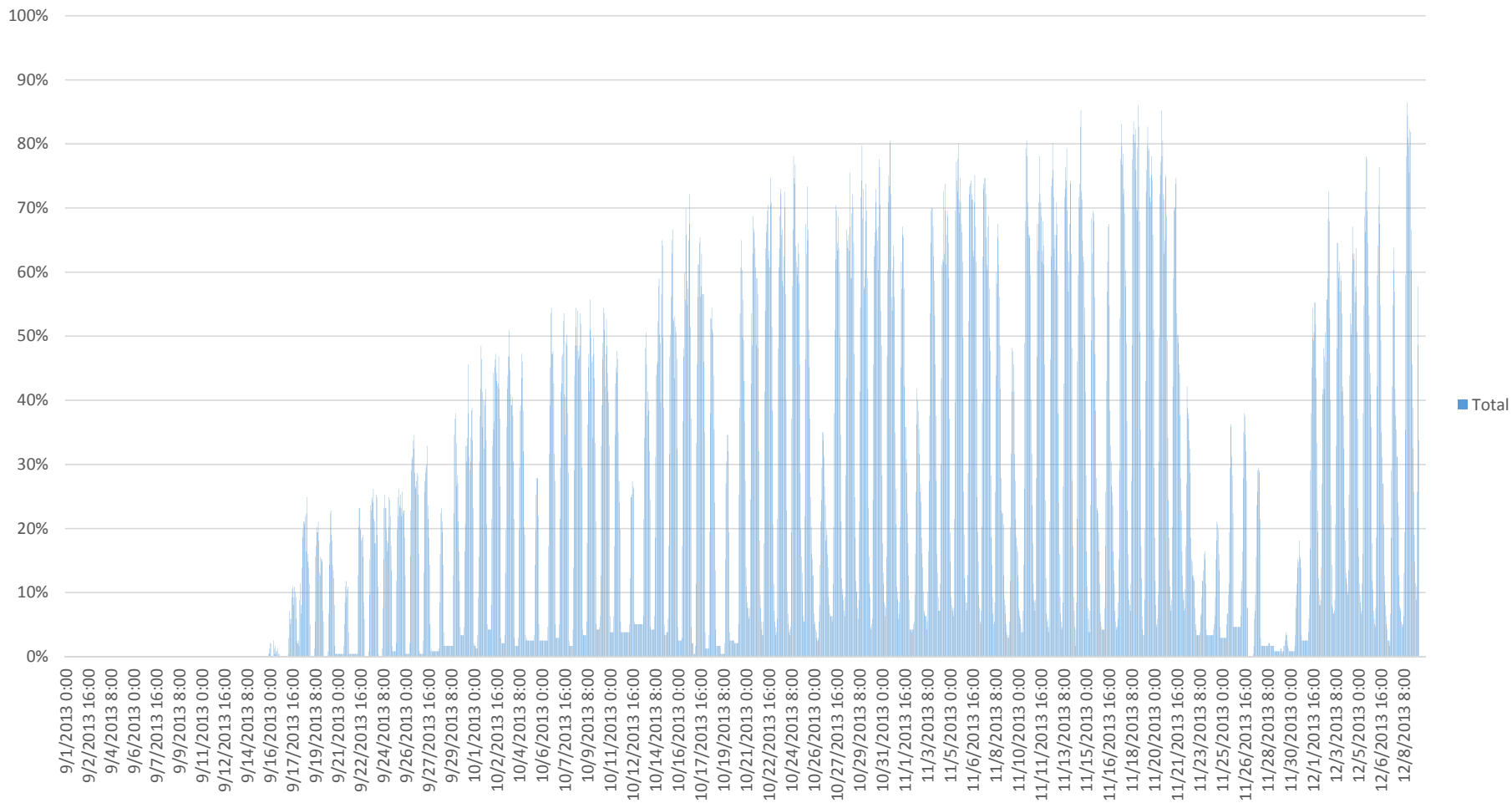
Lab Usage Statistics

Fast Facts about developments in the J. Robert Van Pelt and John and Ruanne Opie Library

Facts for Fall Semester: 73% of Students have logged on computers in the library.
Students from every class, major and department visit regularly.
The average student spent 6.96 Hours logged in.
During this period students launched over 264,000 applications.
Total Login time was over 35,700 hours.
The Library had over 48,000 visits in October, an increase from October '12 from 32,000 (over 50% increase).
Visits typically rise quickly at 11AM and remain high until 11PM.

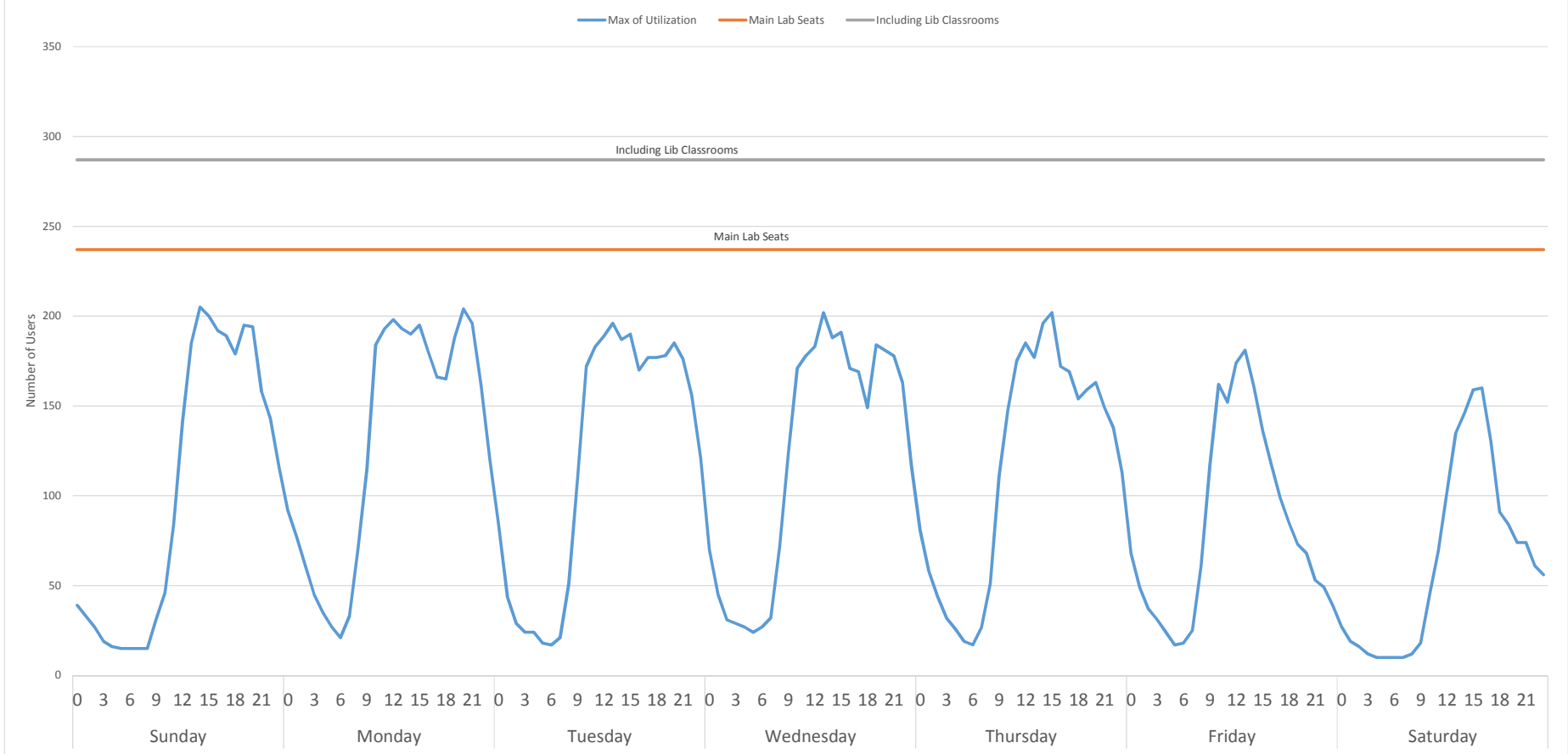
Sum of PctUtil

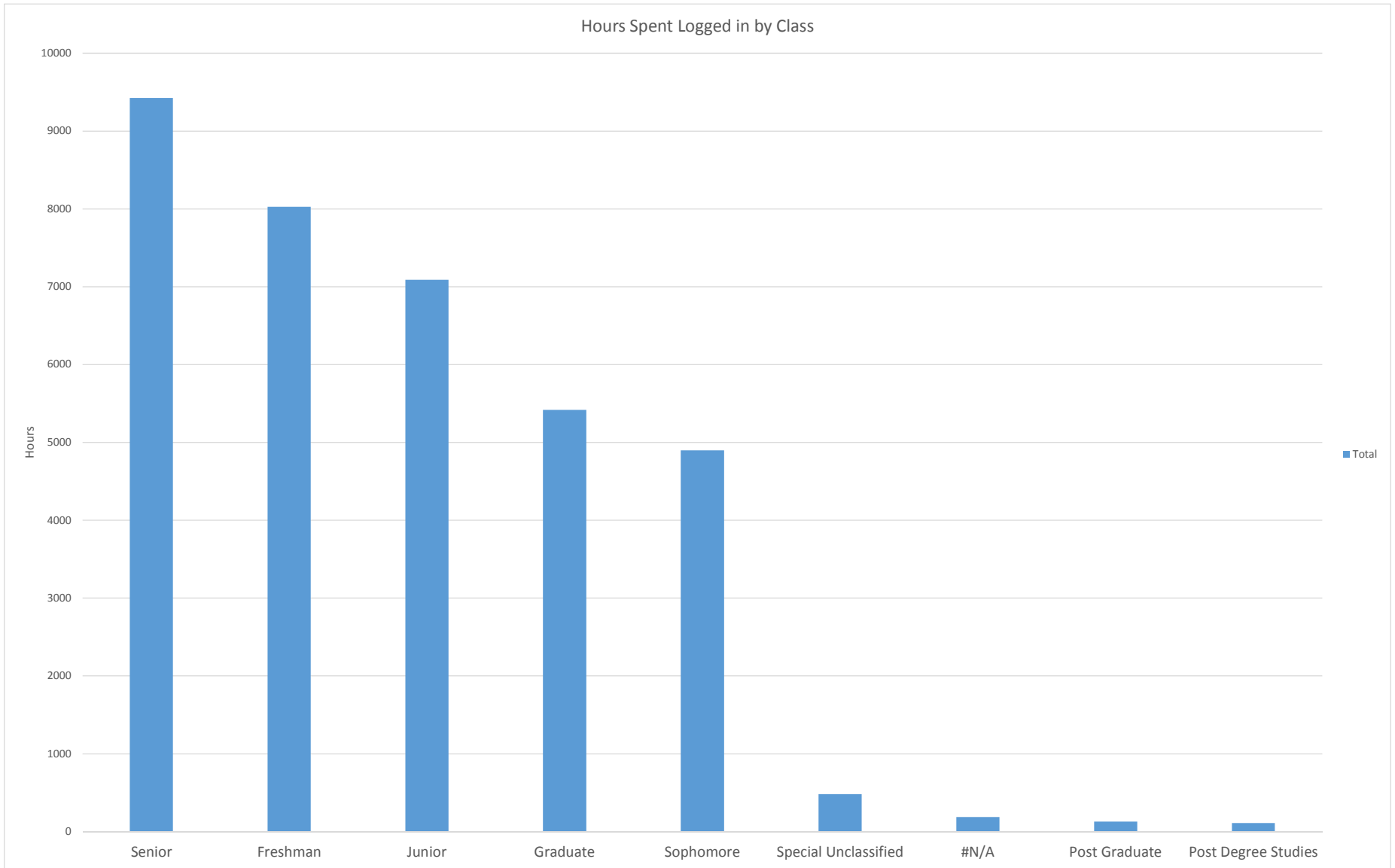
Utilized Lab Seats by Date 9/1/2013-12/9/2013

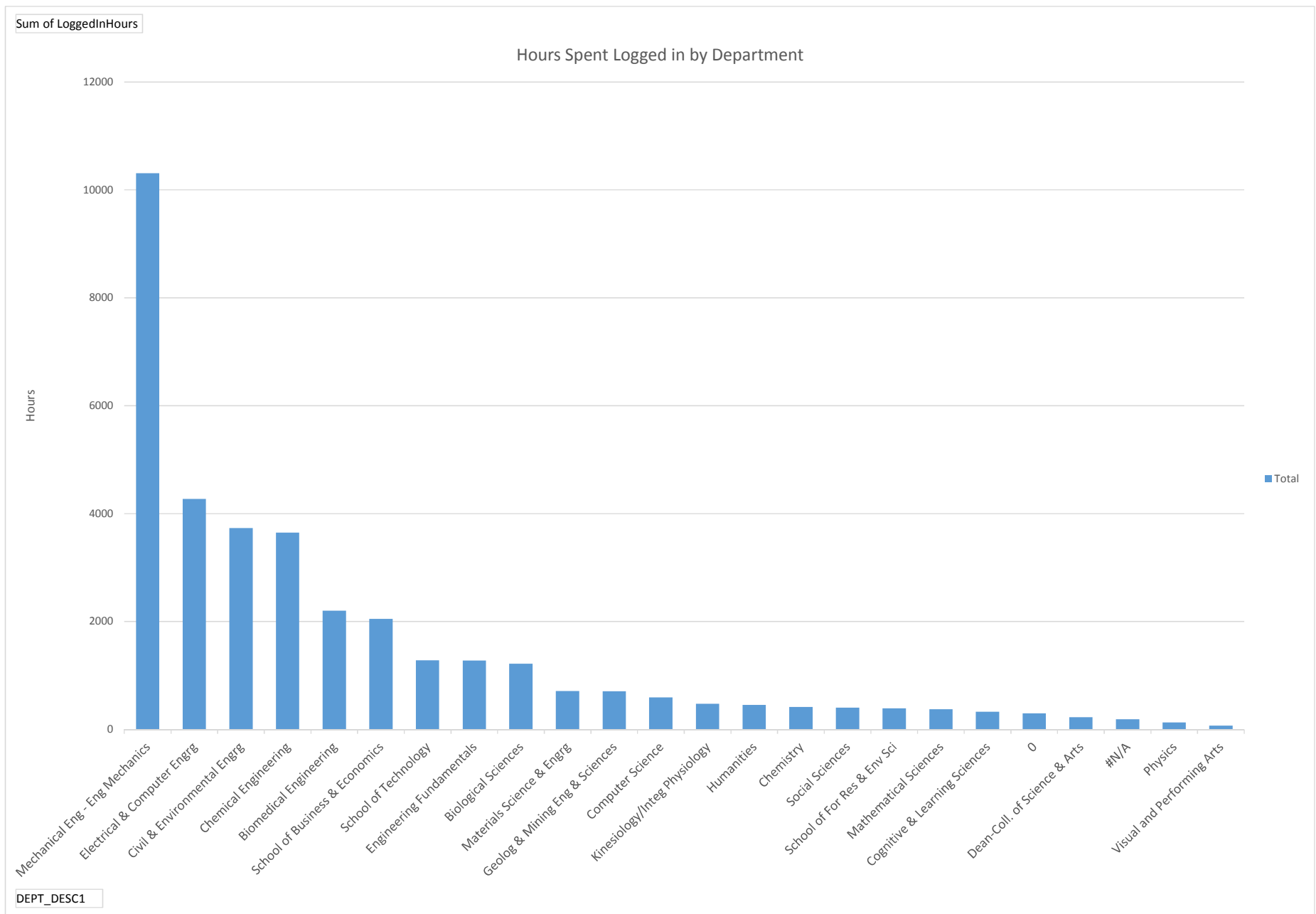


Interval

Maximum Concurrent Users Logged In 9/1-12/10 By Hour of Day

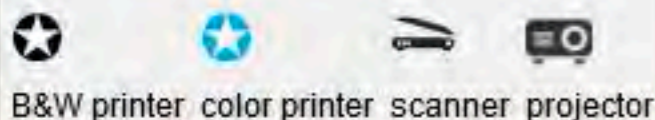






Finding Lab Seats

Equipment Key



Computer Labs

| Building | Room | Open Seats | Capacity | Lab Type | OS | Equipment | Schedule |
|----------|------|------------|----------|-----------------------------|---------------------|-----------|----------------------|
| AOB | G05 | 4 | 5 | Restricted | Windows 7 | | View |
| Chemsci | 717 | 1 | 18 | Chemistry Majors | Windows 7 | | View |
| Dillman | 203 | 21 | 27 | Reservable | Windows 7 - AutoCad | | View |
| Dillman | 208 | 0 | 33 | Reservable | Windows 7 | | View |
| Dillman | 211 | 0 | 25 | Reservable | Windows 7 | | View |
| Dillman | 213 | 6 | 13 | Reservable | Windows 7 | | View |
| Dow | 211 | 5 | 11 | GMES Grad Students | Windows 7, Linux | | View |
| Dow | 853 | 5 | 10 | Civil and Env Grad Students | Windows 7 | | View |
| EERC | 330 | 3 | 45 | Reservable | Windows 7 | | View |
| EERC | 421 | 23 | 25 | Reservable | Windows 7 | | View |
| EERC | 723 | 9 | 21 | Reservable | Windows 7, Linux | | View |

Browser window: <http://labmonitor.mtu.edu/LabStats/Public/GroupSchedule.aspx?groupId=90>

07-0723

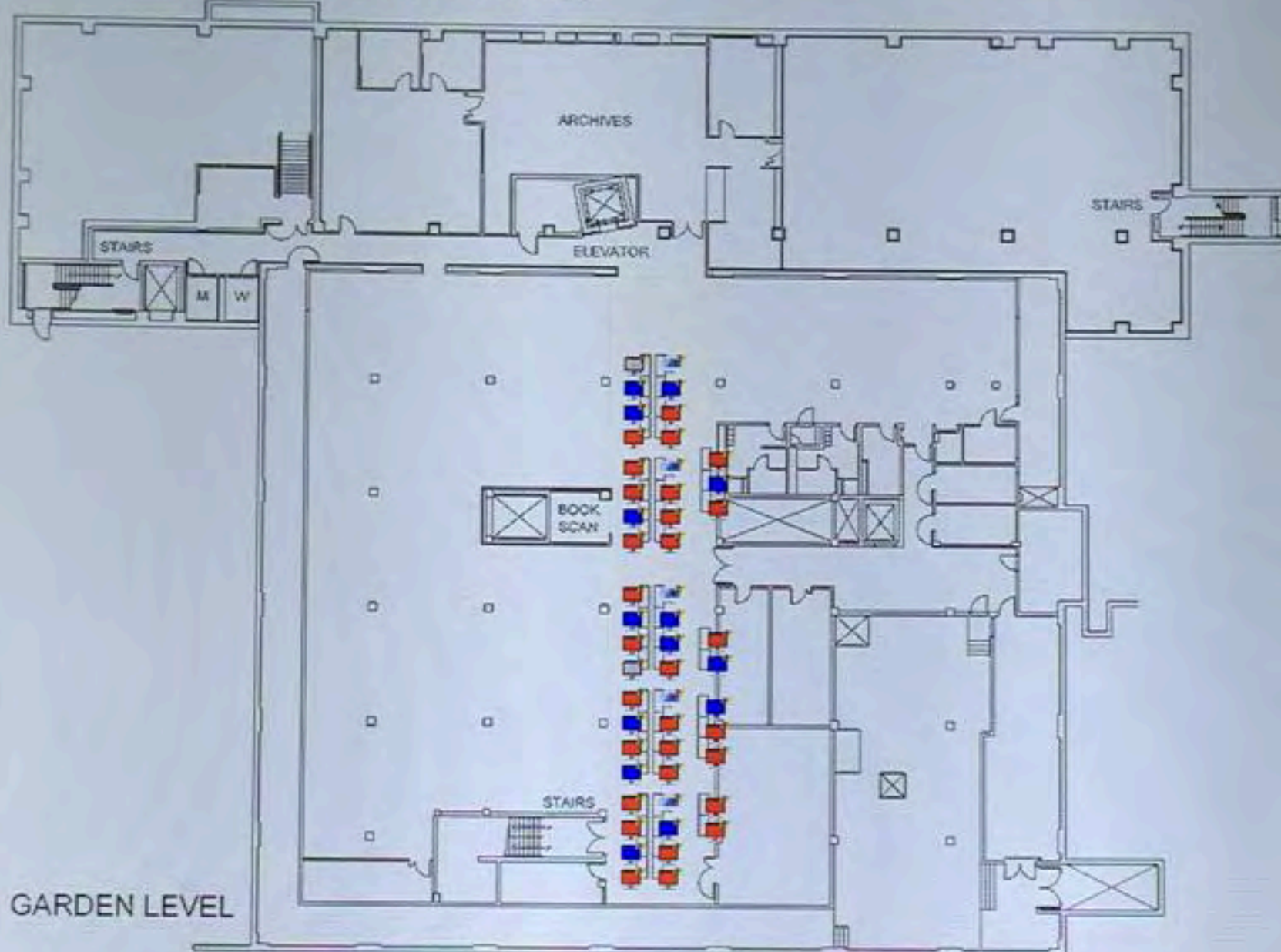
today **Jan 26 – Feb 1 2014** month week day

| | Sun 1/26 | Mon 1/27 | Tue 1/28 | Wed 1/29 | Thu 1/30 | Fri 1/31 | Sat 2/1 |
|---------|----------|----------|------------------------|----------|------------------------|----------|---------|
| all-day | | | | | | | |
| 6am | | | | | | | |
| 7am | | | | | | | |
| 8am | | | | | | | |
| 9am | | | | | | | |
| 10am | | | 9:35 - 10:50 Closed | | 9:35 - 10:50 Closed | | |
| 11am | | | | | | | |
| 12pm | | | | | | | |
| 1pm | | | | | | | |
| 2pm | | | | | | | |
| 3pm | | | | | | | |

| | | | | | | | |
|--------|---------|----|----|---------------------------------------|---------|--|----------------------|
| Walker | 120-OSX | 14 | 21 | GLS, Mod Lang & Media Course Students | Mac OS | | View |
| Walker | 120-WIN | 4 | 8 | Open | Windows | | View |

FIND A COMPUTER IN THE LIBRARY

Map: 17-Lib Garden Key: ■ Available ■ In Use ■ Unavailable ■ Off
 Total: 50 In Use: 29 Available: 14 Off: 7 (Refresh Rate 30 seconds)



Map: 17- Lib Second Key: ■ Available ■ In Use ■ Unavailable ■ Off
 Total: 60 In Use: 45 Available: 11 Off: 4 (Refresh Rate 30 seconds)



Michigan Tech
 Michigan Technological University
 Information Technology

NEED HELP?

Find us at:
www.it.mtu.edu
facebook.com/MichiganTechIT



it-help@mtu.edu



487-1111

CAFE

SAMSUNG

Michigan Tech



Events



Michigan Tech News



Tech Today



Dining Halls



Career Services



Michigan Tech Twitter



Michigan Tech Library



Michigan Tech Athletics



Lab Stats



Just In Case



Sign In

ILC

17-Blue

2/4



17-Green

31/50



17-Orange

6/32



17-Purple

11/70



17-Red

4/32



17-Yellow

8/49



Graduate Labs by Building Number

05-G005

4/5



08-0211

5/11



08-0853

5/10



12-631A

4/8



18-G036

4/7



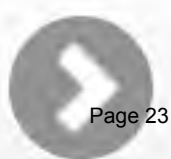
20-0707-Linux

0/7



20-0707-Windows

5/21



Student Laptop Ownership Data

Count of Students with Various PC OS Platforms

| | |
|----------|------|
| UniqueUD | TRUE |
| isPC | TRUE |

| Count of User - User ID | Column Labels | | | | | | |
|-------------------------|---------------|-------------|-------------|-------------|-------------|---------------|--|
| Row Labels | Linux | Mac | Windows | Grand Total | ClassSize | PCT | |
| Freshman | 23 | 236 | 1164 | 1423 | 1495 | 95.2% | |
| Sophomore | 25 | 190 | 771 | 986 | 1141 | 86.4% | |
| Junior | 27 | 185 | 678 | 890 | 1169 | 76.1% | |
| Senior | 49 | 272 | 759 | 1080 | 1612 | 67.0% | |
| Graduate | 47 | 196 | 750 | 993 | 1333 | 74.5% | |
| Grand Total | 171 | 1079 | 4122 | 5372 | 6750 | 79.59% | |

Note: This is based on wireless registrations, students who do not bring their laptops to campus or do not register them with the wireless network are not counted.

Note2: Each student is counted once, regardless of how many devices of each type are registered

Software

Following is a list of software that is available to currently enrolled students. This is provided to you as a faculty or staff member for informational purposes only. For software available to you, please select the "Available Software" menu item above. [Print](#)

- AutoCAD
- ChemBioDraw
- EndNote
- Engineering Equation Solver (EES) - Only available to students in the MEEM Department
- JMP Pro
- LabView
- Mathematica
- MathType
- Matlab
- Microsoft DreamSpark Standard*
- Microsoft DreamSpark Premium*
- Microsoft Security Essentials
- MultiSim
- NX (Formerly Unigraphics NX)
- Sage50 Complete Accounting
- Tecplot Academic Suite (Tecplot 360, Tecplot Chorus, Tecplot Focus, Tecplot RS)
- VMWare Academic Program (VMAP) - Only available to students in the School of Technology

*This item is only available to students in certain majors. For more information, contact IT User Services.

Login Form

Hi dan,

[Log out](#)

Recently Updated Articles

- [EndNote X7](#)
- [Tecplot Chorus v2013R1](#)
- [Tecplot 360 v2013R1](#)
- [Microsoft Visio for Faculty and Staff v2013](#)
- [Microsoft Security Essentials](#)

For help contact IT User Services at 906-487-1111 or it-help@mtu.edu

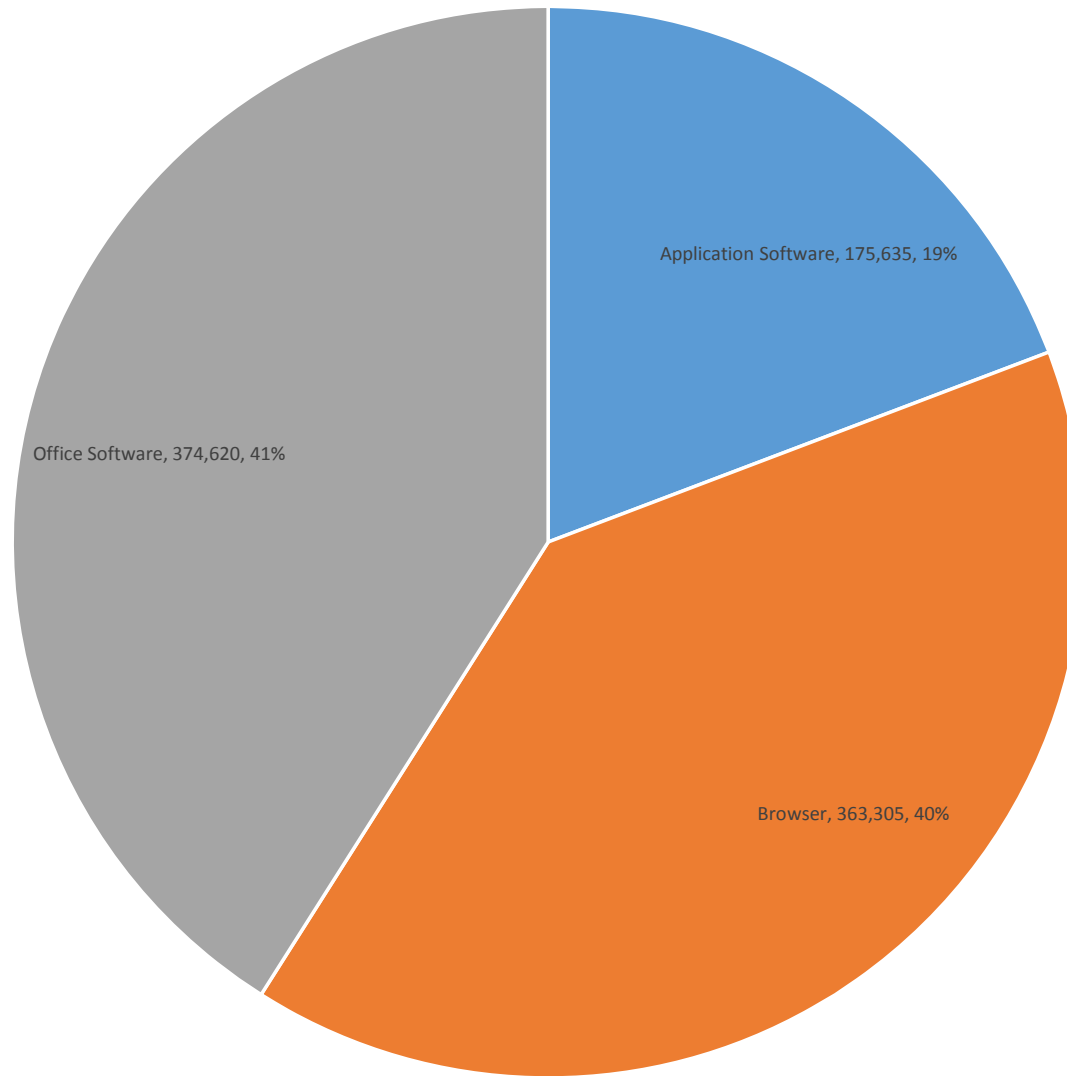
IT Software Expenses by Fund Source and Usage

| Sum of Cost Funds | Usage | | | Grand Total |
|----------------------|------------------|------------------|------------------|--------------------|
| | Academic | All Campus Usage | Institutional | |
| IT | \$538,072 | \$245,146 | \$741,578 | \$1,524,796 |
| IT/Non-IT Split | \$28,142 | | | \$28,142 |
| Non-IT | \$18,603 | | \$40,848 | \$59,451 |
| Grand Total | \$584,817 | \$245,146 | \$782,426 | \$1,612,388 |

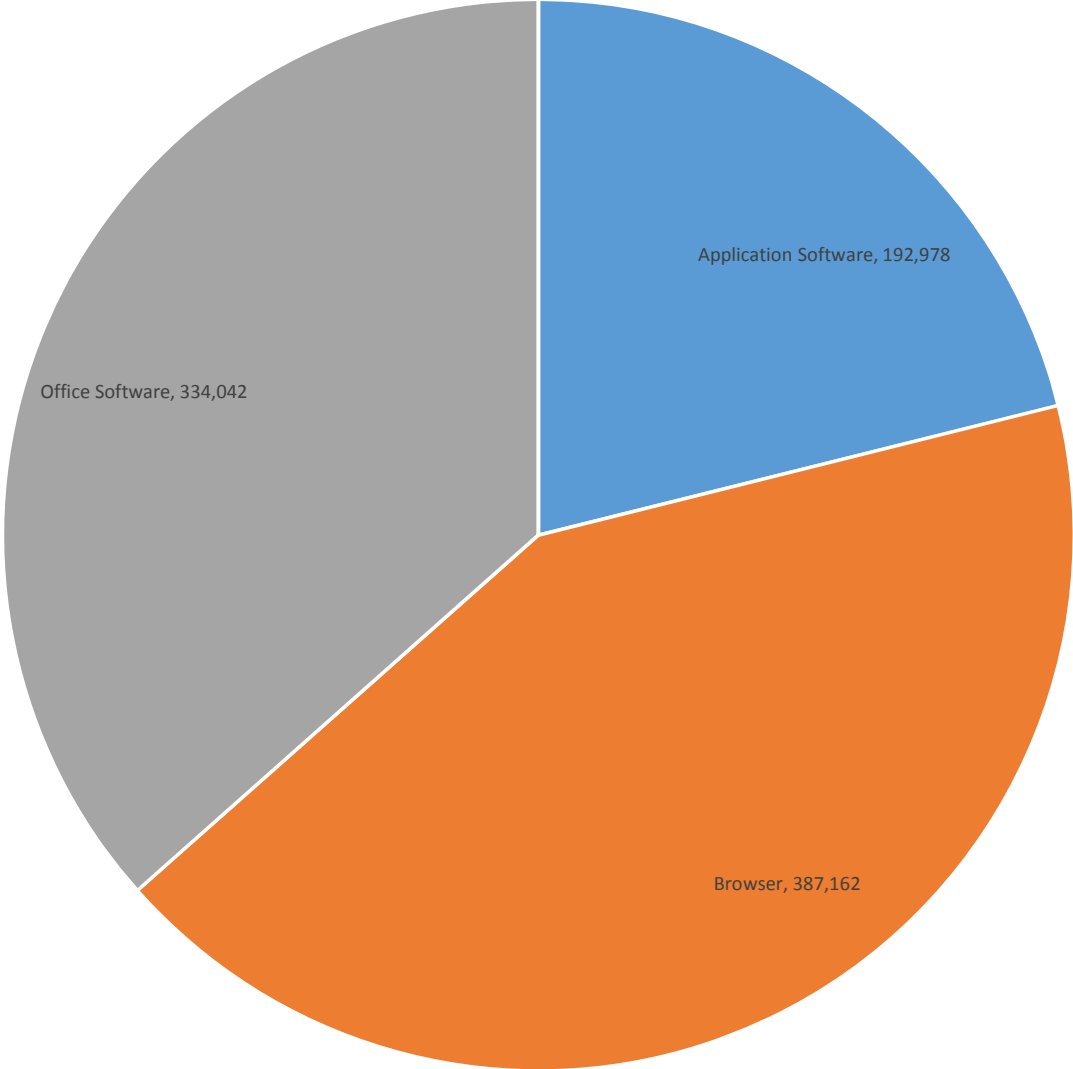
Top 40 Academic and Academic/Academic Support IT Funded Expenses

| Sum of Cost Funded By | Usage | | Grand Total |
|---|---------------------|---------------------------|---------------------|
| | Academic | Academic/Academic Support | |
| IT | \$508,226.99 | \$244,145.57 | \$752,372.56 |
| Microsoft Campus Agreement | | \$138,357.37 | \$138,357.37 |
| Canvas | \$116,060.00 | | \$116,060.00 |
| Matlab | \$59,815.00 | | \$59,815.00 |
| Vmware vSphere VC-VLM4-P-SSS-C/VS5-NXP-BUN-P-SSS-C/VU5-PR-A10-P-SSS-C | | \$43,972.00 | \$43,972.00 |
| Mathmatica (Site License) | \$41,922.74 | | \$41,922.74 |
| SPSS Base/Standard | \$38,000.00 | | \$38,000.00 |
| ESS | \$37,000.00 | | \$37,000.00 |
| Unison/Focus | \$35,000.00 | | \$35,000.00 |
| Connect Meeting Hst | | \$22,950.00 | \$22,950.00 |
| Acrobat Site License | | \$21,014.00 | \$21,014.00 |
| Matlab - Personal Device Licenses | \$17,232.00 | | \$17,232.00 |
| Turnitin with Integration-Canvas | \$14,776.00 | | \$14,776.00 |
| Heak | \$12,000.00 | | \$12,000.00 |
| SAS | \$11,726.00 | | \$11,726.00 |
| ESRI | \$11,200.00 | | \$11,200.00 |
| DreamSpark | \$9,580.00 | | \$9,580.00 |
| ChemDrawUltra | \$8,800.00 | | \$8,800.00 |
| CodeLAB Software (CS) | \$8,720.00 | | \$8,720.00 |
| FACTSage | \$8,240.00 | | \$8,240.00 |
| PaperCut | | \$7,300.50 | \$7,300.50 |
| Autodesk Education Master Suite | \$6,326.25 | | \$6,326.25 |
| Intel Cluster Studio XE | | \$5,919.20 | \$5,919.20 |
| Respondus | \$5,790.00 | | \$5,790.00 |
| Comsol Teaching License | \$5,585.00 | | \$5,585.00 |
| ANSYS | \$5,250.00 | | \$5,250.00 |
| CATIA | \$5,250.00 | | \$5,250.00 |
| Labstats | \$5,100.00 | | \$5,100.00 |
| JMP WNDW/MAC | \$5,000.00 | | \$5,000.00 |
| Endnote | \$4,700.00 | | \$4,700.00 |
| esXpress Enterprise | | \$4,632.50 | \$4,632.50 |
| Cadence University | \$4,500.00 | | \$4,500.00 |
| CES Edupack 2012 | \$4,266.00 | | \$4,266.00 |
| CHEMKIN | \$4,000.00 | | \$4,000.00 |
| OriginPro 8.1 | \$3,955.00 | | \$3,955.00 |
| SigmaPlot | \$3,875.00 | | \$3,875.00 |
| Minitab (16 Multiple Users) | \$3,078.00 | | \$3,078.00 |
| Automation Studio | \$3,030.00 | | \$3,030.00 |
| Virtual Lab | \$3,000.00 | | \$3,000.00 |
| Tecplot 360 | \$2,750.00 | | \$2,750.00 |
| Siemens PLM | \$2,700.00 | | \$2,700.00 |
| Grand Total | \$508,226.99 | \$244,145.57 | \$752,372.56 |

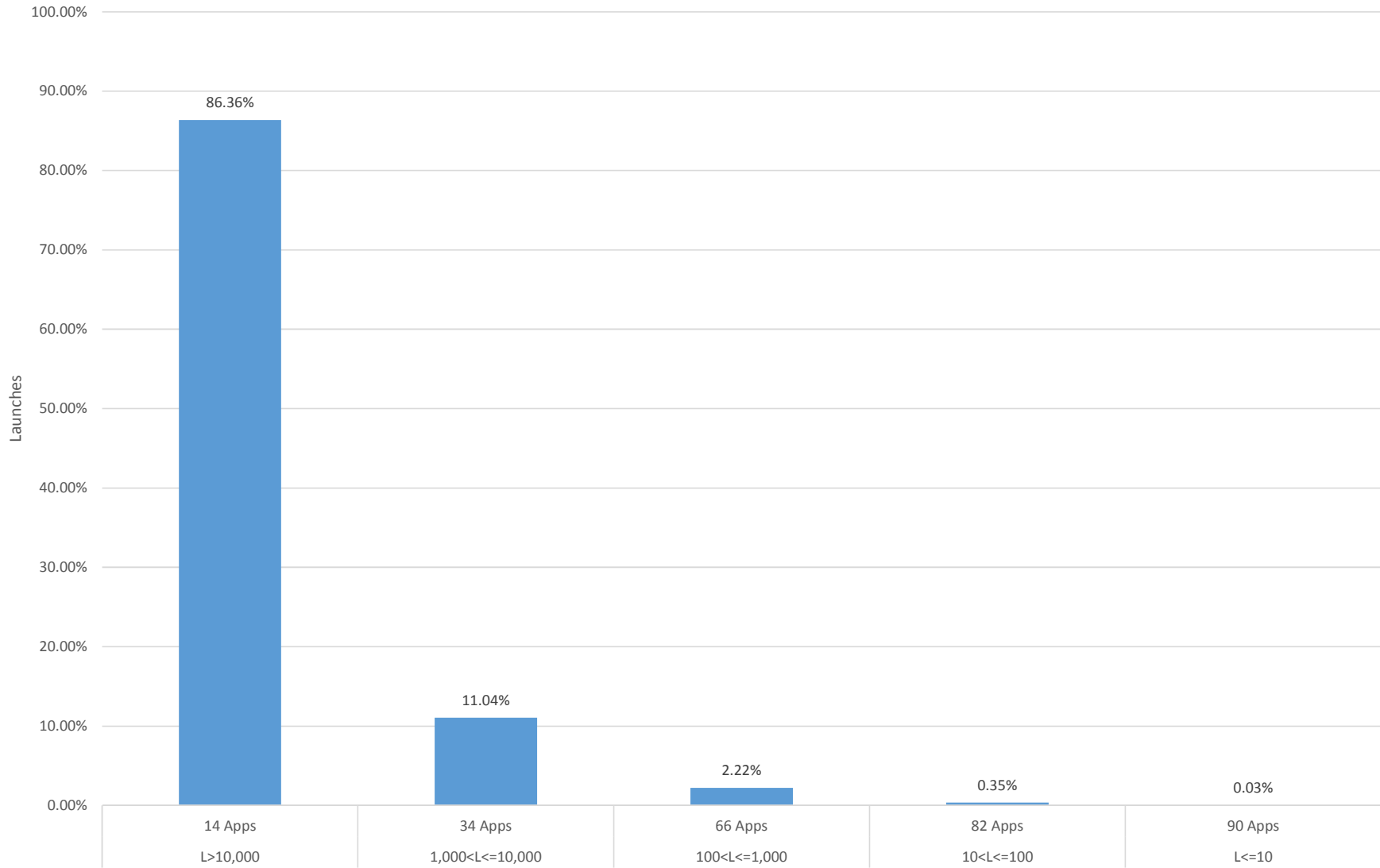
Application Launches by Type (Total of 913,560 Launches)



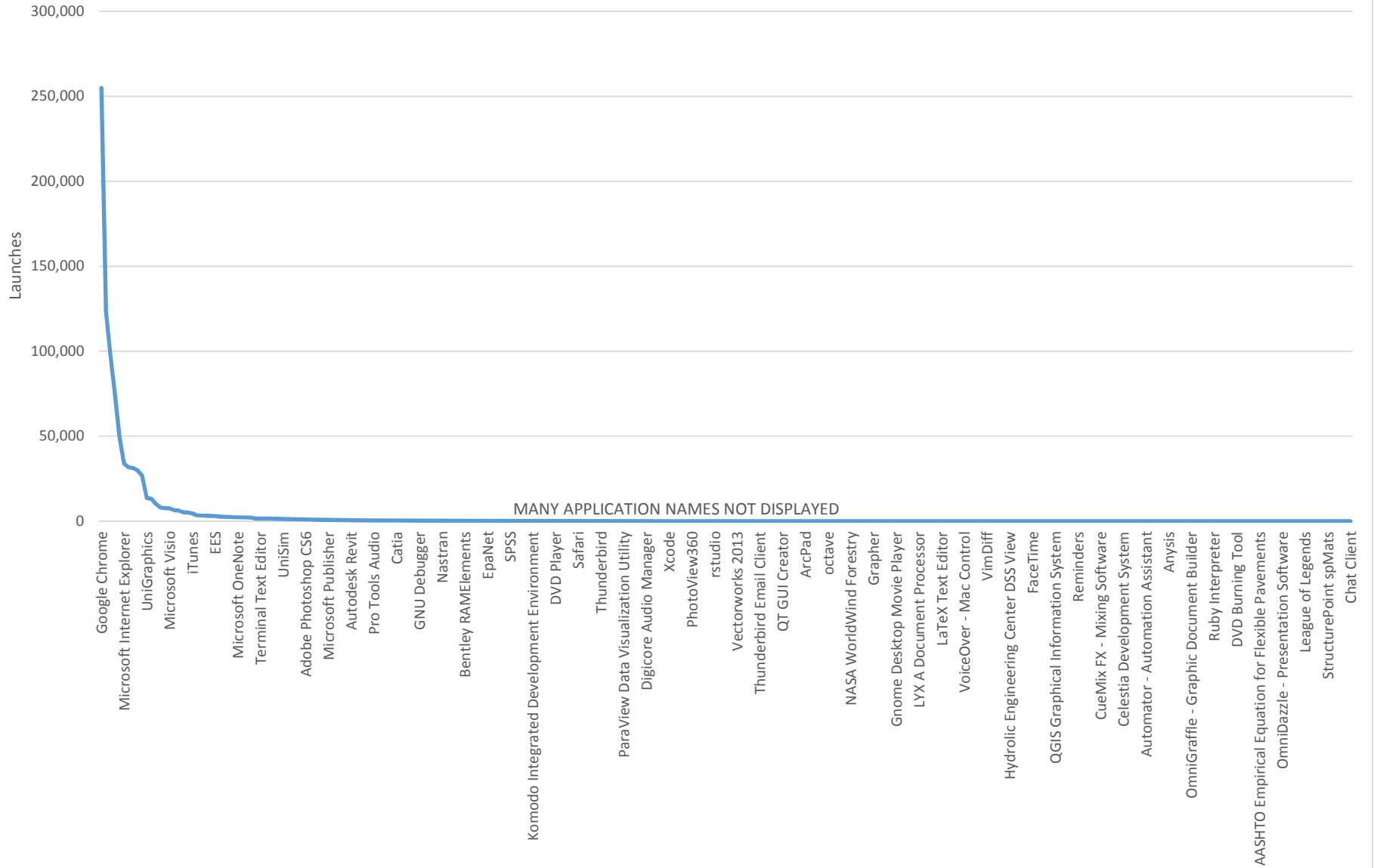
Hours in Applications by Type (Total of 914,182 Hours)



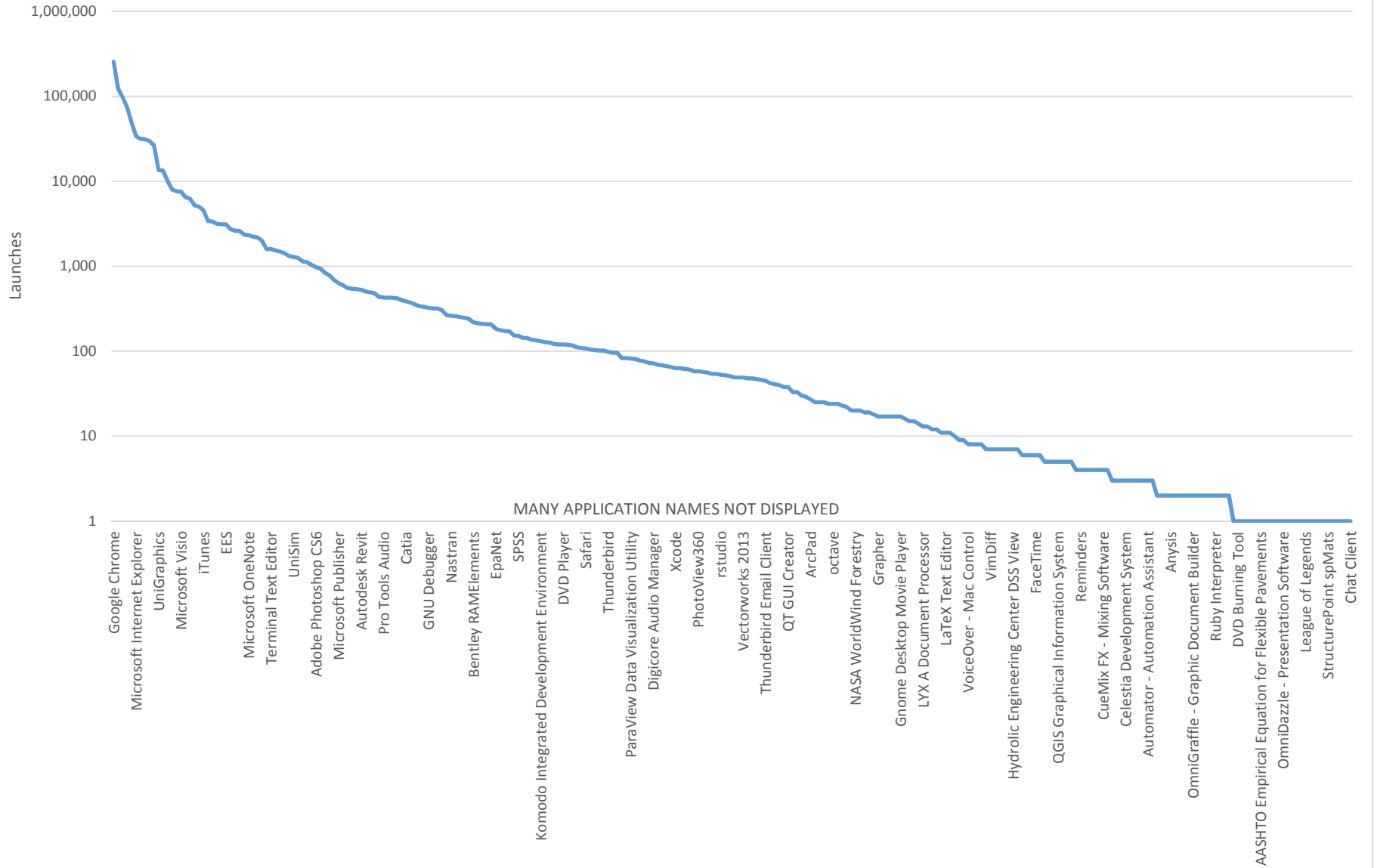
Application Launch Percent by Bracket
 913,560 Total Launches of 286 Applications



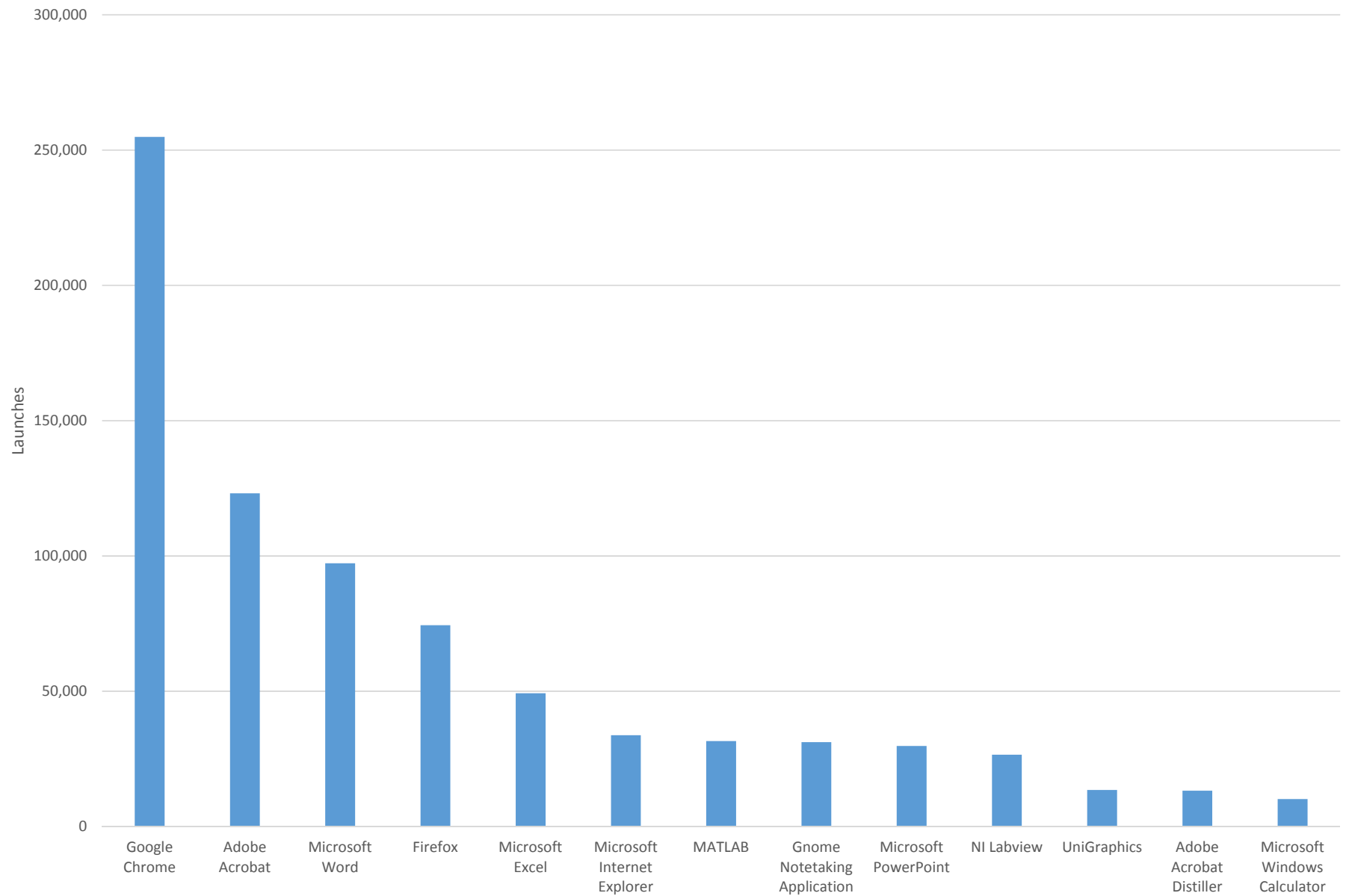
Application Launch Count with launches 913,560 Launches (%100. of total)



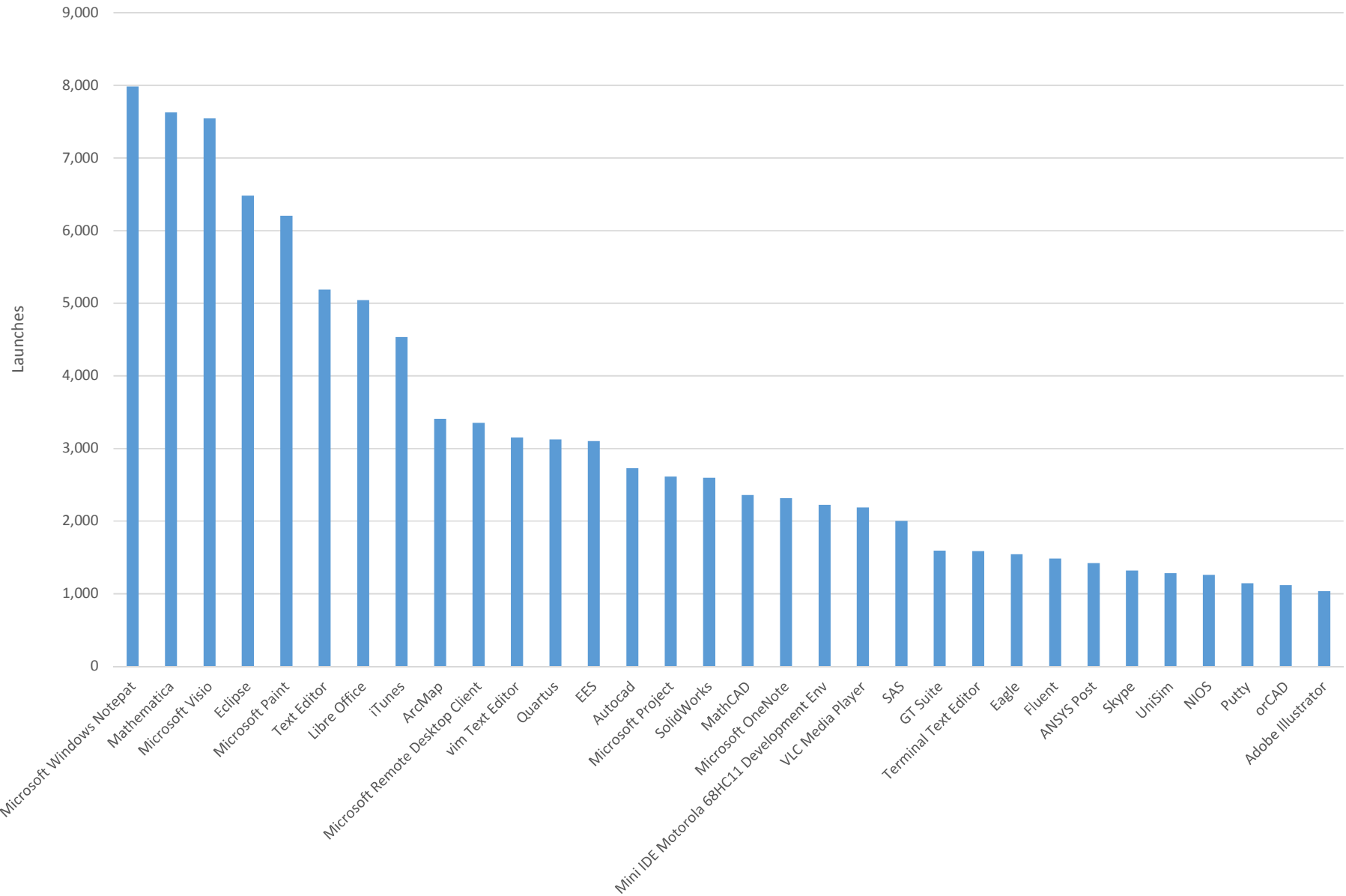
Application Launch Count with launches 913,560 Launches (%100. of total)



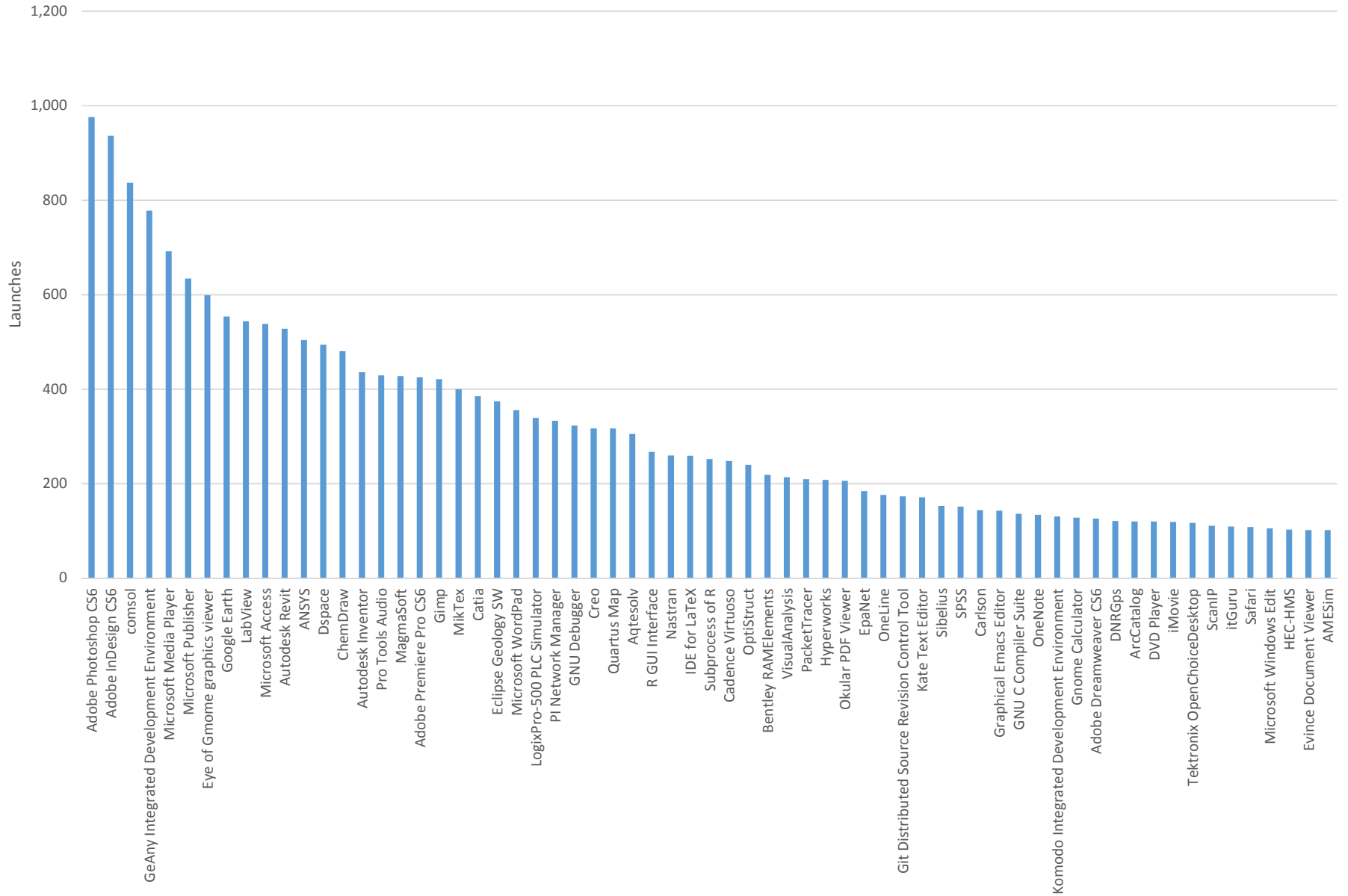
Application Launch Count with launches > 10,000
788,910 Launches (%86.36 of total)



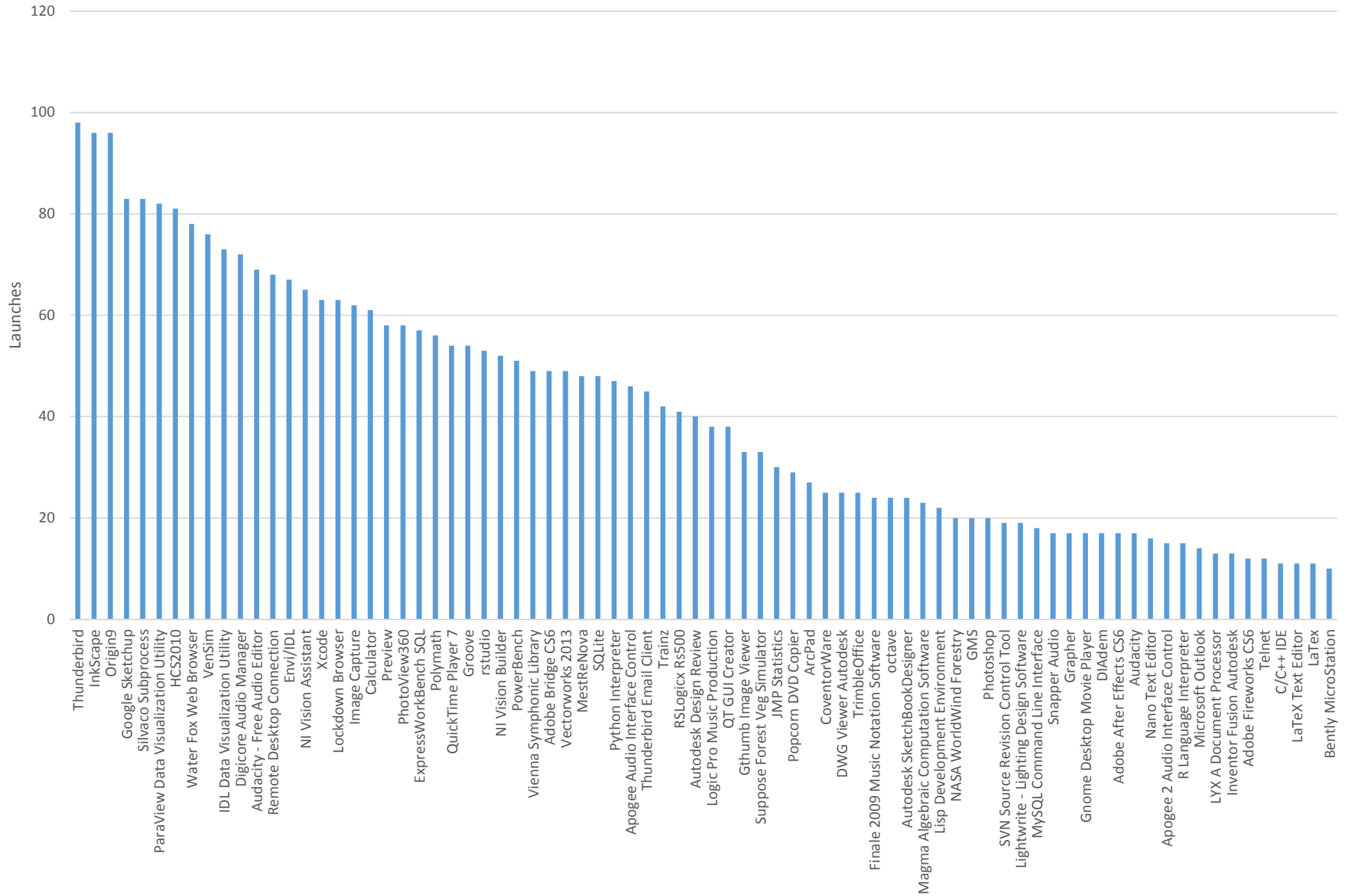
Application Launch Count with launches > 1,000 and <10,000
 100,581 Launches (%11.01 of total)



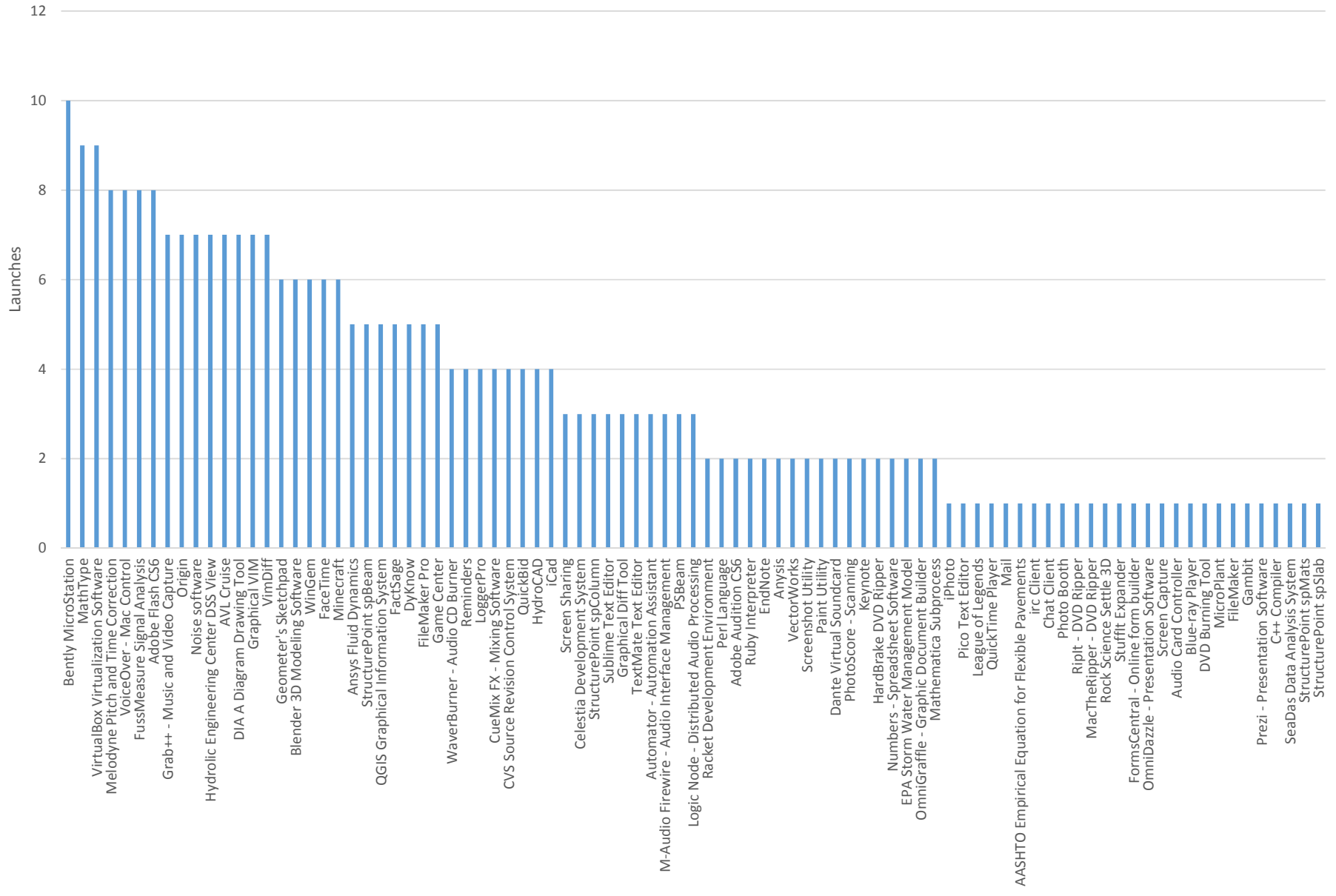
Application Launch Count with launches > 100 and <1,000
20,551 Launches (%2.25 of total)



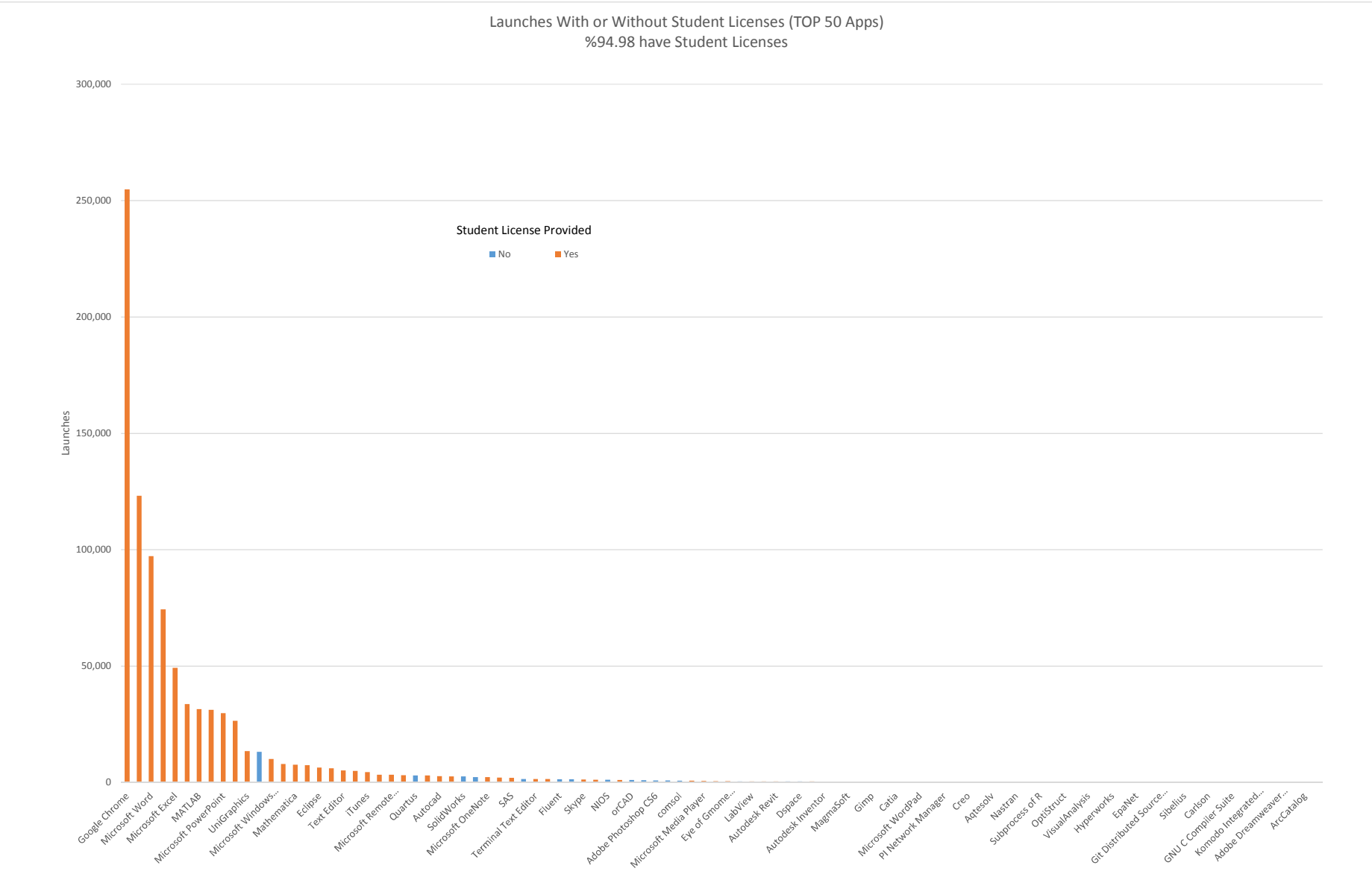
Application Launch Count with launches > 10 and <100
3,224 Launches (%.35 of total)



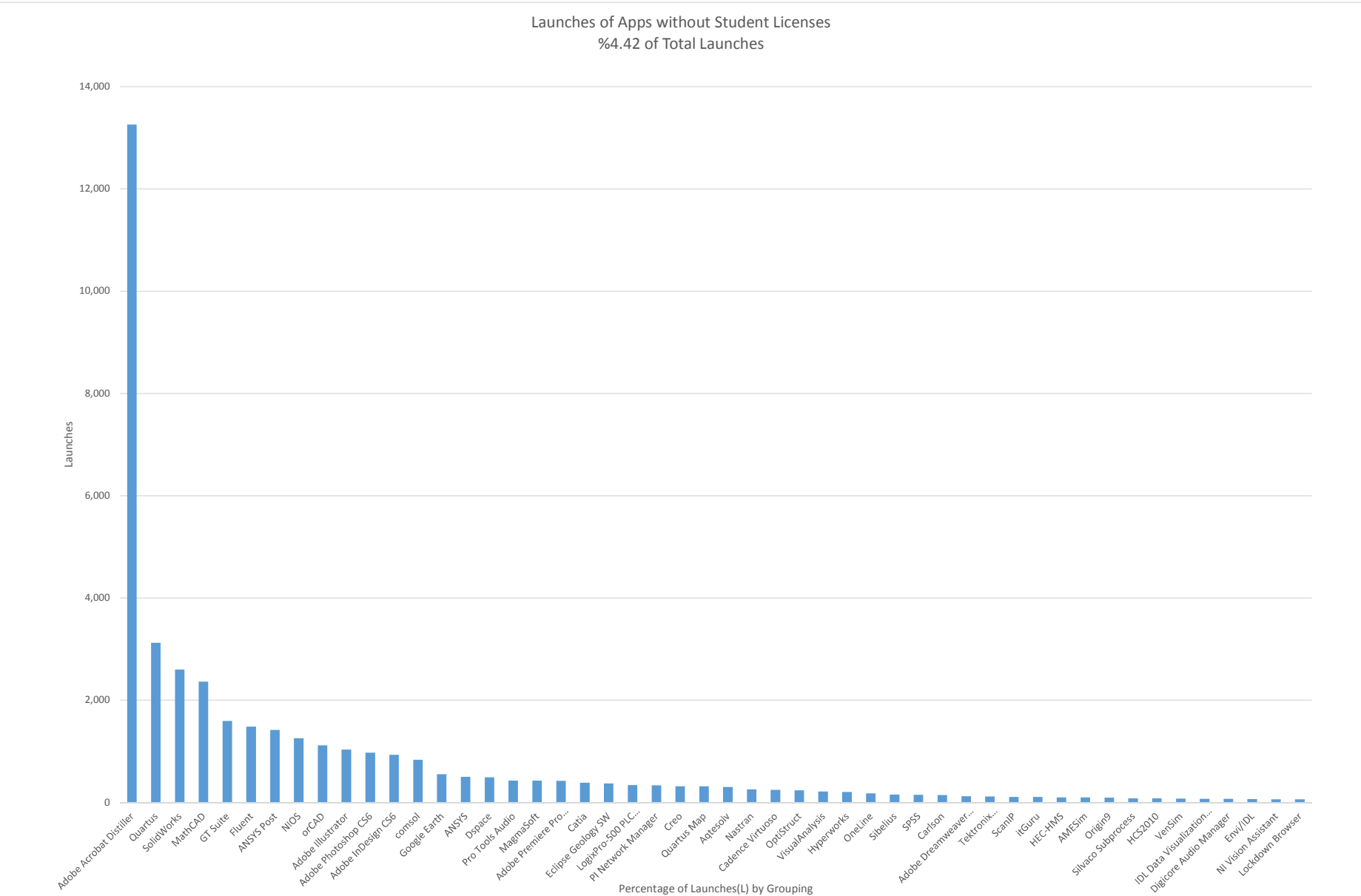
Application Launch Count with launches <10
304 Launches (%.03 of total)



Launches With or Without Student Licenses (TOP 50 Apps)
 %94.98 have Student Licenses



Launches of Apps without Student Licenses
 %4.42 of Total Launches



Hours Spent Running Apps, License available to students (orange), not available (blue)
Top 50 Apps

