



HP LaserJet Enterprise M806 Printer series

Ideal for boosting productivity and efficiency across your business. Equip your teams to handle even the biggest print jobs quickly with HP's top-of-the line A3 printer – and print while on the go. Your investment is protected with easy upgrades.



Boost productivity: give workgroups the speed they need.

- Print big jobs fast at up to 56 ppm A4, and easily thanks to the extra-large input capacity of up to 4,600 pages³. Versatile paper handling options include a stapler/stacker/hole punch and booklet maker⁴.
- Simplify tasks with the right touch – equip users to fly through tasks with the large 10.9 cm (4.3-inch) colour touchscreen.
- Simplicity all around – make it easy for all to print with one common driver⁵.
- Don't wait, just print right away and save energy with Instant-on Technology.

Experience greater efficiency with mobile printing.

- Mobile printing is simple with wireless direct printing¹, and enable touch-to-print convenience from a mobile device².
- Let employees print from mobile devices with built-in print capability or HP ePrint app and software¹⁰.
- Printing made Apple® simple – let users print wirelessly from an iPad®, iPhone®, or iPod touch®¹¹.
- Give users the power to print wirelessly from an iPad®, iPhone®, or iPod touch®.⁷



Invest once, expand easily.

- Keep a close watch, even from afar — monitor and control printers centrally with HP Web Jetadmin⁶.
- Apply fleet-wide policies to protect all your HP devices with the HP Imaging and Printing Center⁷.
- Safeguard your printers right away with HP Instant-on Security⁸, and protect the sensitive data sent to your printer with the HP High-Performance Secure Hard Disk⁹.
- Prints with a positive ID – authenticate users at the device to help secure print jobs.



¹ Wireless direct printing is standard in the HP LaserJet Enterprise M806x+ D7P69A, and may be added as an option to the HP LaserJet Enterprise M806dn and M806x+ CZ245A. Mobile device may require an app or driver. Wireless performance is dependent on physical environment and distance from the printer. For details, see hp.com/go/wirelessprinting.

² Touch-to-print capability is standard in the HP LaserJet Enterprise M806x+ D7P69A model, and may be added as an option to the HP LaserJet Enterprise M806dn and M806x+ CZ245A. Mobile device must support near field communications-enabled printing.

³ Maximum paper capacity of 4,600 sheets is standard in the HP LaserJet Enterprise M806x+ D7P69A and M806x+ CZ245A and available in the HP LaserJet Enterprise M806dn model with the optional 3,500-sheet high-capacity input tray.

⁴ 2 bin stapler/stacker, 2 bin stapler/stacker/hole punch and booklet maker are optional accessories. Please purchase separately.

⁵ The HP Universal Print Driver is free and available for download at hp.com/go/upd.

⁶ HP Web Jetadmin is free and available for download at hp.com/go/webjetadmin.

⁷ HP Imaging and Printing Security Center must be purchased separately.

⁸ HP Instant-on Security is part of HP Imaging and Printing Security Center, which must be purchased separately.

⁹ HP High-Performance Secure Hard Drive is not available on the HP LaserJet Enterprise M806dn and can't be purchased separately.

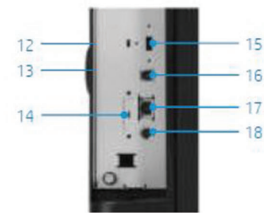
¹⁰ Local printing requires mobile device and printer to be on the same network or have a direct wireless connection to printer. Wireless performance is dependent upon physical environment and distance from access point. Wireless operations are compatible with 2.4 GHz operations only. Remote printing requires an Internet connection to an HP Web-connected printer. App or software and HP ePrint account registration may also be required. Wireless broadband use requires separately purchased service contract for mobile devices. Check with service provider for coverage and availability in your area. See hp.com/go/mobileprinting for more details.

¹¹ Supports OS X® Lion, OS X Mountain Lion, and the following devices running iOS 4.2 or later: iPad® (all models), iPhone® (3GS or later), and iPod touch® (third generation or later). Works with HP's AirPrint-enabled printers and requires the printer be connected to the same network as your OS X or iOS device. Wireless performance is dependent on physical environment and distance from the access point. OS X, iPad, iPhone, and iPod touch are trademarks of Apple® Inc., registered in the United States and other countries. AirPrint™ and the AirPrint logo are trademarks of Apple Inc.



Product walkaround

1. Intuitive 10.9 cm (4.3 in) colortouchscreen control panel
2. 500-page output bin
3. Hardware integration pocket (HIP) for solution integration
4. 100-sheet face-up straight-through output bin
5. Easy front-door access to HP all-in-one toner cartridge
6. Built-in automatic two-sided printing
7. Two 500-sheet input trays support media up to A3 (11 x 17 in)
8. 3,500-sheet high-capacity input tray supports A4/letter media
9. Easy-access USB port to print files directly
10. 100-sheet multipurpose tray handles media up to 220 g/m² (53 lb bond)
11. Right-side doors provide access for clearing jams
12. 800 MHz processor, 1 GB standard memory
13. HP High-Performance Secure Hard Disk
14. Access port for optional Kensington-style lock
15. USB port (for connecting third-party devices)
16. Hi-Speed USB 2.0 printing port
17. HP Jetdirect Gigabit Ethernet print server
18. Foreign interface harness (for connecting third-party devices)



Series at a glance



HP LaserJet Enterprise M806dn Printer

- print speed A4 black: up to 56 ppm (duplex: up to 56 ipm)
- print speed A3 black: up to 28 ppm
- up to 1200 x 1200 dpi (HP FastRes 1200)
- 1 GB RAM expandable to 1.5 GB
- 800 MHz processor
- 2 Hi-Speed USB 2.0 Host
- 1 Hi-Speed USB 2.0 Device
- 1 Gigabit Ethernet 10/100/1000T network
- 1 Foreign Interface
- 1 Hardware Integration Pocket
- 2 Internal USB Host
- Two 500-sheet input trays
- 100-sheet multi-purpose tray

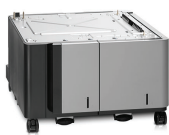
HP LaserJet Enterprise M806x+ NFC/Wireless Direct Printer

- as HP LaserJet Enterprise M806dn with:
- Near Field Communications (NFC) Module for wireless direct printing
- 320 GB HP High-Performance Secure Hard Disk
- 3,500 sheet High-capacity tray (tray 4: 1500 sheets A4 or letter only, tray 5: 2000 sheets A4 or letter only)

HP LaserJet Enterprise M806x+ Printer

- as HP LaserJet Enterprise M806dn with:
- 320 GB HP High-Performance Secure Hard Disk
- 3,500 sheet High-capacity tray (tray 4: 1500 sheets A4 or letter only, tray 5: 2000 sheets A4 or letter only)

Recommended accessories



C3F79A
HP LaserJet 3500-sheet High-capacity Input Tray

The HP LaserJet 3500-sheet High-Capacity Input Tray allows users to spend more time focusing on business and less time reloading paper. Support the productivity of growing work groups with this high-performance, robust input feeder and stand.



CZ285A
HP LaserJet Booklet Maker/Finisher

The HP LaserJet Booklet Maker/Finisher provides the ability to create more complex finished documents in-house without the time and expense of going to an outside service.



CZ994A
HP LaserJet Stapler/Stacker

The HP LaserJet Stapler/Stacker provides automatic stapling and stacking for improved efficiency and increased output capacity.



CZ996A
HP LaserJet Stapler/Stacker with 2/4 hole punch

The HP LaserJet Stapler/Stacker with 2/4 hole punch provides automatic stapling and stacking for improved efficiency and increased output capacity.

Ordering information



HP LaserJet Enterprise M806dn Printer (CZ244A)

HP LaserJet M806dn Printer; HP Black LaserJet Toner Cartridge (~34.5K pages); Hardware Install Guide, Support flyer, Warranty card; Printer documentation and driver on CD-ROM; power cord



HP LaserJet Enterprise M806x+ NFC/Wireless Direct Printer (D7P69A)

HP LaserJet M806x+ Printer; HP Black LaserJet Toner Cartridge (~34.5K pages); Hardware Install Guide, Support flyer, Warranty card; Printer documentation and driver on CD-ROM; power cord; NFC module



HP LaserJet Enterprise M806x+ Printer (CZ245A)

HP LaserJet M806x+ Printer; HP Black LaserJet Toner Cartridge (~34.5K pages); Hardware Install Guide, Support flyer, Warranty card; Printer documentation and driver on CD-ROM; power cord

Accessories, Supplies and Support

Accessories

C3F79A	HP LaserJet 3500-sheet High-capacity Input Tray
CZ285A	HP LaserJet Booklet Maker/Finisher
CZ994A	HP LaserJet Stapler/Stacker
CZ996A	HP LaserJet Stapler/Stacker with 2/4 hole punch
C8091A	HP Staple Cartridge Refill (5000 staples) for Stapler/Stacker accessories
CC383A	HP 2-pack 2000-staple Cartridge for booklet maker finisher

Connectivity

J8026A	HP Jetdirect 2700w USB Wireless Print Server
J8029A	HP Jetdirect 2800w NFC/Wireless Direct Accessory

Supplies

C2H57A	HP LaserJet 220V Maintenance/Fuser Kit Average yield: 200,000 pages
CF325X	HP 25X High Yield Black Original LaserJet Toner Cartridge Average cartridge yields 34,500 standard pages. Declared yield based on ISO/IEC 19752 and continuous printing.

Service & support

U8C50E	HP 3 year Next Business Day LaserJet Enterprise M806 Hardware Support
U8C53E	HP 3 year 4 hour 9x5 LaserJet Enterprise M806 Hardware Support
U8C51E	HP 4 year Next Business Day LaserJet Enterprise M806 Hardware Support
U8C52E	HP 5 year Next Business Day LaserJet Enterprise M806 Hardware Support
U8C71PE	HP 1 year Post Warranty Next Business Day LaserJet Enterprise M806 Hardware Support
U8C72PE	HP 2 year Post Warranty Next Business Day LaserJet Enterprise M806 Hardware Support
U8C73PE	HP 1 year Post Warranty 4 hour 9x5 9x5 LaserJet Enterprise M806 Hardware Support

For a complete list of supplies, accessories and services, please refer to <http://www.hp.com>
For workflow, device management and other solutions, please visit the Global Solutions catalog: www.hp.com/go/gsc

Declared yield value in accordance with ISO/IEC 19752. Actual yields vary considerably based on images printed and other factors. For more information, visit hp.com/go/learnaboutsupplies. Actual yields vary considerably based on images printed and other factors. For details see hp.com/go/learnaboutsupplies

Count on dependable support to create the best image possible. We can help you enhance your printing and imaging environment, protect your IT investment, and grow your business—with expert support that's affordable, personal, and tailored to your needs through HP Care Pack Services.

Technical specifications

Print technology	Laser		
Print speed	A4 black: Up to 56 ppm, A4 duplex: Up to 56 ipm A3 black: Up to 28 ppm First page out black (A4): As fast as 8.5 sec Measured using ISO/IEC 24734, excludes first set of test documents. For more information see hp.com/go/printerclaims . Exact speed varies depending on the system configuration, software application, driver, and document complexity.		
Processor	800 MHz		
Memory	1 GB. Expandable to 1.5 GB through 1 GB industry-standard DIMM		
Hard disk	320 GB HP High-Performance Secure Hard Disk (only on D7P69A and CZ245A)		
Print	Quality	HP FastRes 1200 (1200 dpi quality), 600 x 600 dpi with HP Resolution Enhancement technology	
	Resolution	Black: Up to 1200 x 1200 dpi	
	Printer languages	HP PCL 6, HP PCL 5e, HP Postscript Level 3 emulation, native PDF printing (v 1.4)	
	Typefaces/fonts	105 internal TrueType fonts scalable in HP PCL; 92 internal scalable fonts in HP Postscript Level 3 emulation (Euro symbol built-in); 1 internal Unicode Fonts (Andale Mono WorldType); 2 Internal Windows Vista 8 Fonts (Calibri, Cambria); additional font solutions available via third-party flash memory cards; HP LaserJet Fonts and IPDS Emulation available at hp.com/go/laserjetfonts	
	Duty cycle (monthly, A4)	Up to 300,000 pages	
	Recommended monthly page volume	10,000 to 50,000	
	Print margins (mm)	Top: 2.0 mm. Left: 2.0 mm. Right: 2.0 mm. Bottom: 2.0 mm	
Media handling	Input:	Capacity	Weight
	Tray 1	sheets: 100; envelopes: 100; labels: 100	60 to 220 g/m ²
	Tray 2	sheets: 500; labels: small quantities	60 to 199 g/m ²
	Tray 3	CZ244A: optional High-capacity Input tray, tray 4: sheets: 1500 (A4 only), tray 5: sheets: 2000 (A4 only); D7P69A: High-capacity Input tray, tray 4: sheets: 1500 (A4 only), tray 5: sheets: 2000 (A4 only); CZ245A: as D7P69A product;	60 to 199 g/m ²
	Maximum input capacity	Up to 4600 sheets	
	Output:	Sheets: Up to 600 sheets. Transparencies: Up to 100 sheets	
	Maximum output capacity:	Up to 3500 sheets (with optional stapler/stacker, stapler/stacker with hole punch, or stapler/stacker with booklet maker)	
	Duplex printing: Automatic (standard)		
Interface and connectivity	Standard: CZ244A: 2 Hi-Speed USB 2.0 Host; 1 Hi-Speed USB 2.0 Device; 1 Gigabit Ethernet 10/100/1000T network; 1 Foreign Interface; 1 Hardware Integration Pocket; 2 Internal USB Host; D7P69A: 2 Hi-Speed USB 2.0 Host; 1 Hi-Speed USB 2.0 Device; 1 Gigabit Ethernet 10/100/1000T network; 1 NFC/Wireless (accessory included); 1 Foreign Interface; 2 Internal USB Host; CZ245A: 2 Hi-Speed USB 2.0 Host; 1 Hi-Speed USB 2.0 Device; 1 Gigabit Ethernet 10/100/1000T network; 1 Foreign Interface; 1 Hardware Integration Pocket; 2 Internal USB Host; Optional: CZ244A: HP Jetdirect 2800w NFC & Wireless Direct Accessory, HP Jetdirect 2700w USB Wireless Print Server, HP Jetdirect ew2500 802.11g Wireless Print Server. For more information on HP networking solutions visit hp.com/go/jetdirect ; D7P69A: HP Jetdirect 2700w USB Wireless Print Server, HP Jetdirect ew2500 802.11g Wireless Print Server. For more information on HP networking solutions visit hp.com/go/jetdirect ; CZ245A: HP Jetdirect 2800w NFC & Wireless Direct Accessory, HP Jetdirect 2700w USB Wireless Print Server, HP Jetdirect ew2500 802.11g Wireless Print Server. For more information on HP networking solutions visit hp.com/go/jetdirect ;		
Operating systems compatibility	Windows 8 (32-bit/64-bit), Windows 7 (32-bit/64-bit), Windows Vista (32-bit/64-bit), Windows XP (SP2 or higher) (32-bit/64-bit), Windows Server 2012 (64-bit), Windows Server 2008 (32-bit/64-bit), Windows Server 2008 R2 (64-bit), Windows Server 2003 (SP1 or higher) (32-bit/64-bit), Mac OS X version 10.6.8, 10.7.5 Lion, 10.8 Mountain Lion. For the latest operating system support see: AirPrint™ (support.apple.com/kb/ht4356); Android (android.com); Citrix and Windows Terminal Services (hp.com/go/upd); HP ePrint Software Driver (hp.com/go/eprintssoftware); Linux (hplip.net); Novell (novell.com/iprint); SAP device types (hp.com/go/sap/drivers); SAP Print (hp.com/go/sap/print); UNIX (hp.com/go/UNIX); UNIX JetDirect (hp.com/go/jetdirectunix_software). LaserJet driver information and support available at: hp.com/support/ljM806 ; hp.com/go/hpsc ; hp.com/support		
Supported Network Protocols	IPv4/IPv6: Apple Bonjour (AirPrint) compatible, SNMPv1/v2c/v3, HTTP, HTTPS, FTP, TFTP, Port 9100, LPD, IPP, Secure-IPP, WS Discovery, WS Print, IPsec/Firewall; IPv6: DHCPv6, MLDv1, ICMPv6; IPv4: Auto-IP, SLP, Telnet, IGMPv2, BOOTP/DHCP, WINS, IP Direct Mode Management security: SNMPv3, SSL/TLS (HTTPS), IPsec/Firewall; Port authentication (802.1x EAP-PEAP, EAP-TLS)		
Minimum system requirements	Windows 8, Windows 7 SP1+, Windows Vista, Windows Server 2003 (SP1+), Windows Server 2008, Windows Server 2008 R2 (64 bit), Windows Server 2012 (64-bit), Windows XP (SP2+); CD-ROM or DVD drive, or Internet connection; Dedicated universal serial bus (USB 1.1 or 2.0), or network connection; 200 MB available hard disk space; Operating system compatible hardware system requirements see microsoft.com . Mac OS X v10.6.8, OS X 10.7.5 Lion, OS X 10.8 Mountain Lion; 1 GB of available hard-disk space; CD-ROM or DVD drive, or Internet connection; Dedicated universal serial bus (USB 1.1 or 2.0), or network connection (Operating system compatible hardware system requirements see apple.com)		
Standard software	HP PCL 6 Discrete Printer Driver, Mac SW Link to Web (Mac Installer), Windows Installer		
Control panel	10.9 cm colour LCD with resistive touchscreen; rotating (adjustable angle) display; illuminated capacitive Home button (for quick return to the Home menu); Easy Access USB; Hardware Integration Pocket		
Power	Requirements: Input Voltage: 220 to 240 VAC, 50/60 Hz, 5.5 A. Consumption: 1000 watts (printing), 38 watts (ready), 6.5 watts (sleep), 2.2 watts (Auto On/Auto Off), 0.3 watts (off). Typical Electricity Consumption (TEC): 4.0 kWh/Week		
Dimensions (w x d x h)	Out of package: CZ244A: 1095 x 648 x 635 mm; D7P69A: 1095 x 715 x 1040 mm; CZ245A: 1095 x 715 x 1040 mm; ; Packaged: CZ244A: 856 x 760 x 978 mm; D7P69A: 856 x 790 x 1368 mm; CZ245A: 856 x 790 x 1368 mm;		
Weight	Out of package: CZ244A: 76.1 kg; D7P69A: 108.4 kg; CZ245A: 108.4 kg; ; Packaged: CZ244A: 88.84 kg; D7P69A: 130.87 kg; CZ245A: 130.67 kg;		
Printer management	HP Web Jetadmin; HP Utility (Mac)		
Security management	CZ244A: Identity Management: Kerberos authentication, LDAP authentication, 1000 user PIN codes, optional HP Access Control and 3rd party advanced authentication solutions (e.g., badge readers); Network: IPsec/firewall with Certificate, Pre-Shared Key, and Kerberos authentication, Supports WJA-10 IPsec configuration Plug-in, 802.1X authentication (EAP-PEAP, EAP-TLS), SNMPv3, HTTPS, Certificates, Access Control List; Data: Storage Encryption, SSL/TLS, Encrypted Credentials; Device: Security lock slot, USB port disablement, Hardware Integration Pocket for security solutions; Security Management: Compatible with HP Imaging & Printing Security Center; D7P69A: Identity Management: Kerberos authentication, LDAP authentication, 1000 user PIN codes, optional HP Access Control and 3rd party advanced authentication solutions (e.g., badge readers); Network: IPsec/firewall with Certificate, Pre-Shared Key, and Kerberos authentication, Supports WJA-10 IPsec configuration Plug-in, 802.1X authentication (EAP-PEAP, EAP-TLS), SNMPv3, HTTPS, Certificates, Access Control List; Data: Storage Encryption, Secure Erase, SSL/TLS, Encrypted Credentials; Device: Security lock slot, USB port disablement, Hardware Integration Pocket for security solutions; Security Management: Compatible with HP Imaging & Printing Security Center; CZ245A: as D7P69A product;		
Operating environment	Operating temperature: 10 to 32.5°C. Recommended operating temperature: 10 to 32.5°C. Operating humidity: 10 to 80% RH. Operating humidity recommended: 10 to 80% RH. Storage temperature: 0 to 40°C. Storage humidity: 10 to 90% RH		
Acoustics	Acoustic Power Emissions: 7.2 B(A); Acoustic Pressure Emissions: 55 dB(A)		
Certifications	CISPR 22:2008 / EN 55022:2010 (Class A), EN 61000-3-2 :2006 +A1:2009 +A2:2009; EN 61000-3-3 :2008; EN 55024:2010; EMC Directive 2004/108/EC with CE Marking (Europe); other EMC approvals as required by individual countries. Regulatory standards: IEC 60950-1:2005 +A1; EN60950-1: 2006 +A1:1:2009 +A1:2010 +A1:2:2011; IEC 60825-1:2007 (Class 1 Laser/Led Product); EN 60825-1:2007 (Class 1 Laser/LED Product); GS Certificate (Germany, Europe); IEC 62479:2010; EN 62479:2010; Low Voltage Directive 2006/95/EC with CE Marking (Europe); other safety approvals as required by individual countries. ENERGY STAR: Yes		
Warranty	One-year, onsite limited warranty; 24-hour support; 7 days a week phone support, Product: One year, onsite, warranty. Warranty may vary by country as required by law. Go to hp.com/support to learn about HP award winning service and support options in your region.		

<http://www.hp.com/uk>

© Copyright 2013 Hewlett-Packard Development Company, L.P. The information contained herein is subject to change without notice. The only warranties for HP products and services are set forth in the express warranty statements accompanying such products and services. Nothing herein should be construed as constituting an additional warranty. HP shall not be liable for technical or editorial errors or omissions contained herein.

Published in EMEA 11/13 4AA4-7714EEE

