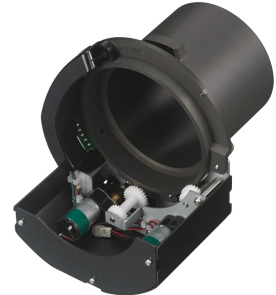




PKF60LA3

Lens Adapter for the discontinued VPLL-Z2009 optional Lens to use with the VPL-FHZ57, FHZ60, FHZ65, FH60, FH65, VPL-FWZ65, FWZ60 FW65, and FW60 Installation Projectors



Features

Very high image quality with Sony's advanced BrightEra 3LCD projection engine and Z-Phosphor laser light source

The Z-Phosphor laser light source is coupled with Sony's acclaimed BrightEra 3LCD projection engine to ensure high, 5,000-lumen image brightness with vivid, natural color reproduction.

Constant Brightness

Constant Bright maintains the same brightness throughout the 20,000 hours (at light output mode "Middle") recommended lifespan.

Advanced picture refinement technologies

Picture quality is boosted by advanced processing featured on Sony's home cinema projectors. Reality Creation uses a powerful pattern-matching database to optimize every pixel. Contrast Enhancer actively analyzes and refines dark and light image areas for sparkling highlights and rich, deep blacks.

Crisp, detail-packed WUXGA-resolution images

See fine detail in PC presentations, videos, or multimedia signage with WUXGA (1920 x 1200) 16:10 resolution.

Up to 20,000 hours* of operation with virtually no maintenance

The advanced laser light source offers up to 20,000 hours* of operation without lamp exchange, reducing lifetime running costs compared with traditional projectors. *Actual hours may vary depending on usage environment

Hassle-free automatic filter cleaning

Focus on great-looking images instead of arduous maintenance tasks: new automated filter cleaning system removes dust every 100 hours.

Energy saving features

SONY

Reduce running costs even further with convenient energy-saving features: Picture Mute and Auto Dimming.

Save time with every presentation

Quick power On/Off dramatically cuts warm-up time after switch-on before you can start presenting at full brightness.

360° free-angle installation capability

Enjoy greater installation flexibility: position the projector freely at any angle — on its side or even upside down.

Supports HDBaseT

Simpler, more cost-effective installation and connectivity with digital transmission of HD video, audio, and networking/control via a single Ethernet cable.

Quiet operation

Low fan noise ensures discreet, unobtrusive operation in quiet environments for academic and corporate use.

Slim, attractive blend-in design

The slim, stylish case design features a flat-top surface that blends in discreetly when the projector is ceiling mounted.

Picture Mode

Picture Mode ensures great-looking pictures in any presentation conditions. Select Standard, Dynamic, or Brightness Priority mode for optimized image quality, with any source and in every room.

Simple setup with friendly new Installation menu

Easily adjust projector settings with remote commander.

Specification

Specifications	
Dimensions *1 (WxHxD)	97 x 75 x 90 mm
Model	VPL-FHZ65/FHZ60/FHZ57 VPL-FH65/FH60 VPL-FWZ65/FWZ60 VPL-FW65/FW60
Package Size *1 (LxWxH)	152 x 124 x 123 mm
Projection Lens	VPLL-Z2009

SONY

Projector Lens Throw Ratio	0.85-1.0:1 (WUXGA)
----------------------------	--------------------

Weight *1	0.24kg
-----------	--------