



SALAMANDER
DESIGNS

Furniture Shaped By Your Needs ®

COLLABORATION FURNITURE

BUNDLE SOLUTIONS



4 BAY, SINGLE XL MONITOR CREDENZA

D2/347AMXL/

This robust, large-capacity cabinet system houses all electronics, including integrated support for AV and IT systems. Freestanding and fully-integrated, this credenza is perfect for retrofit installations, allowing for quick and efficient installation without involving additional tradespeople to install electrical wiring or reinforce walls.

Available in a variety of styles.



DYO
DESIGN YOUR OWN

See our **full-line catalog** for more customizable credenzas or visit SalamanderDesigns.com/Commercial



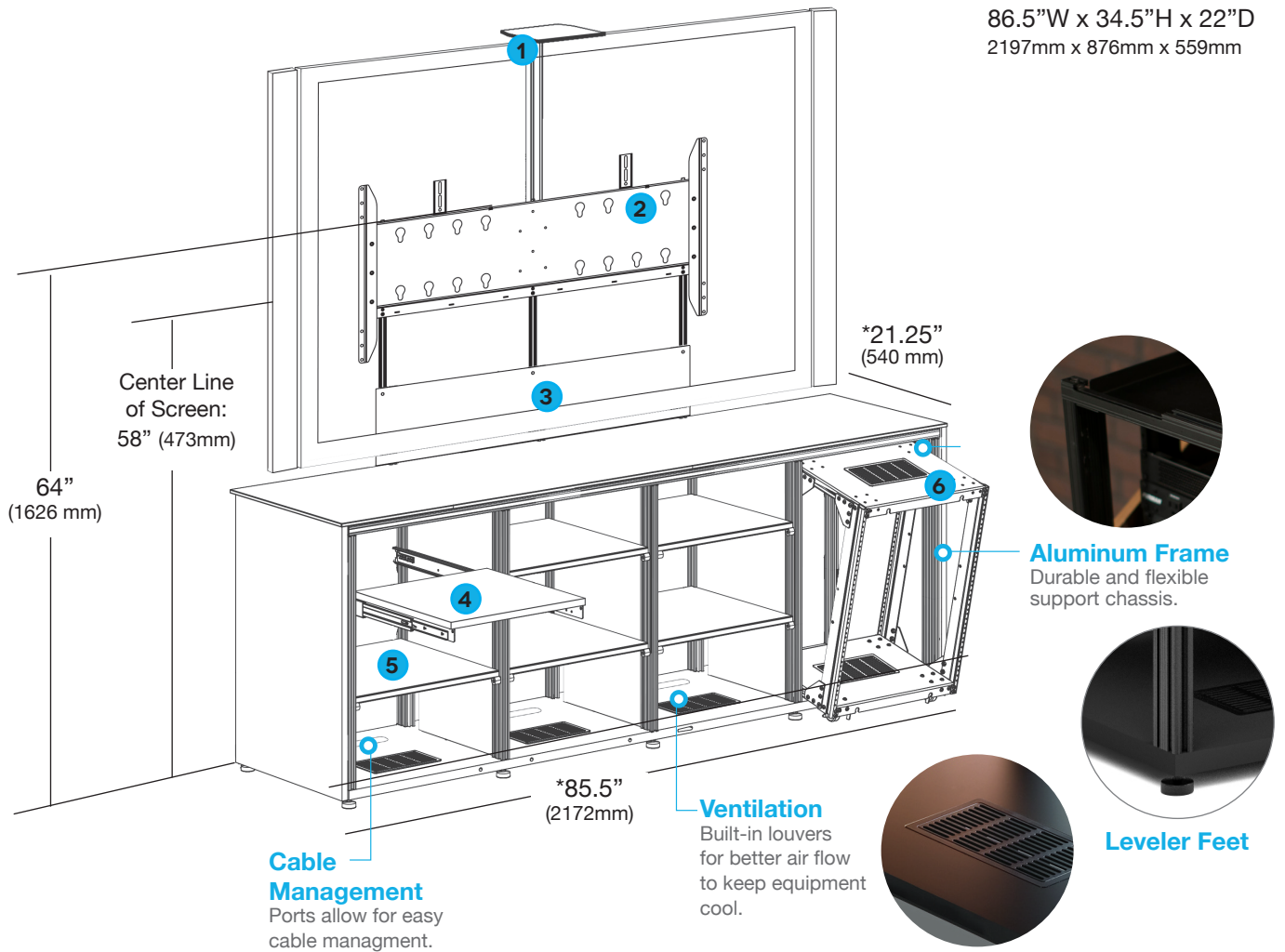


4 BAY, SINGLE XL MONITOR, CREDENZA

D2/347AMXL/

BUNDLE SOLUTIONS

**Barcelona Models*
86.5"W x 34.5"H x 22"D
2197mm x 876mm x 559mm

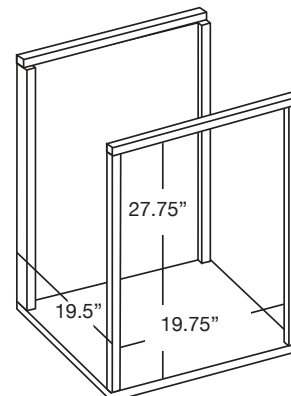


*CREDENZA INCLUDES:

1. (1) Camera Shelf
2. (1) XL Monitor Mount: Holds 65-90", 300 lbs
3. (1) Black, Modesty Panel
4. (1) Pull-Out Storage Tray
5. (5) Adjustable Shelves
6. (1) 13-U Pull-Out Rack Cartridge
7. (1) Active Cooling Rear Panel
8. (3) Pinch-Out Rear Panels

Typical interior bay dimensions:

19.75"W (502 mm) x 27.75"H (705 mm)
x 19.5"D (495 mm)





VIDEO INTEGRATION

XL Monitor Mount

- Holds 65-90", 300 lbs (136 kg)
- Integrated mount with 11.75"H (298mm) black modesty panel
- Vesa Compliant
Horizontal: 400, 600, 800, 1000, 1200mm
Vertical: 400, 500, 600mm



Integrate Camera(s) with Optional Shelf

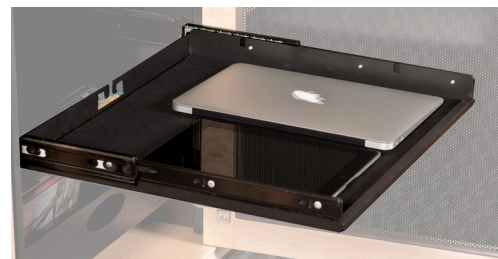
- Fully adjustable height.
- Single Shelf (CA/CM/S): 10"W (254mm) x 6"D (152mm) x .25"Th (6mm)
- Dual Shelf (CA/CM/D): 10"W (254mm) x 6"D (152mm) x .5"Th (13mm)
- Maximum Weight Capacity of 5 lbs (2 kgs)

Dual Camera Shelf Available
CA/CM/D

INTERIOR STORAGE

Pull-Out Storage Tray

- Storage tray with adjustable dividers (2), felt liner and integrated wire manager
- Utilizes heavy duty ball bearing slides, black steel body.
- Maximum Weight Capacity: 50 lbs (22.6 kgs)
- Measures: 17.25"W (438mm) x 16"D (406mm) x 1.625"H (42mm)



Adjustable Shelves (7 included)

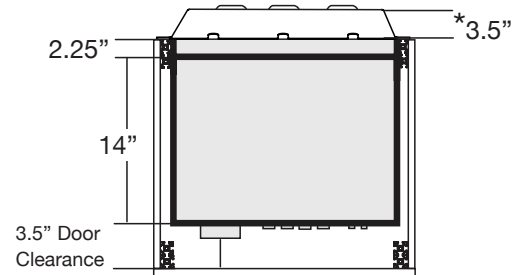
- Fully adjustable
- Matte black, powder-coated MDF
- Maximum Weight Capacity: 75 lbs (34 kgs)
- Measures: 19.75"W (502mm) x 17.5"D (445mm) x .625" TH (16mm)





13-U PULL-OUT RACK CARTRIDGE

- 13 rack unit storage
- Pull-out 19" standard rack with rails front and back of the rack
- Cabinet guide rails and in-line caster base provide simple use and transport
- Weight capacity of 200 lbs (90.7 kgs)
- Heavy duty bearing wheels for easy installation, removal, and maneuvering of full equipment racks during service
- Rugged 12-gauge powder coated steel construction
- Flexible wire management wire loom allows for removal of rack from cabinet with 360 degrees of access to components without disconnecting from cabinet. An absolute step up from slide out and rotational racks service constraints
- Tool-less removal / installation for service
- Does not require cabinet to be attached to the wall or floor as other solutions.



* When using optional Extended Rear Panel (sold separately).

Options Include:

- **Fan Kit** (# FI/CR/AC) active cooling insert that provides front exhausting of heat to protect components.
- **Wire Lacing Bars** (RM/LB2)
- **14"D Vented Rack Shelves** (RM/VS2U, RM/VS3U, RM/VS4U)
- **Face Plates** (RM/VFP/1U, RM/VFP/2U, RM/VFP/3U, RM/VFP/4U,)



COOLING & ACCESS

Active Cooling Rear Panel

- Thermostatically controlled cooling system turns On at approx 80° F, maximum speed is reached at 95° F
- Automatic, low-noise cooling system with 22 dBA, quad 80 mm exhaust fans
- Air Flow: 26 CFM
- Exhaust Direction: Rearward
- Power Consumption: 1W in standy mode; 4 W in mid speed 8-10 W in full speed
- Thermistor: Remote with 20" lead
- Input: 100-240V / 50Hz-60Hz. International power plug available (#400-230 and 400-235)



Pinch-Out Rear Panels (3 included)

- Permit fast, easy access to components and wiring





STYLES

We select the finest materials and finishes. Choose from sleek, hand-polished, high-gloss finishes to richly textured real wood fronts or a contemporary beveled edge style with a mix of materials. **If you are looking for something special please contact us to discuss custom options.**



MILAN / WHITE
White, 3-D Diamond Pattern
Doors with 1/2" (12mm) White,
Solid Surface
D2/347AMXL/ML/WH/WH



MILAN / BLACK
White, 3-D Diamond Pattern
Doors with 1/2" (12mm) Black,
Solid Surface
D2/347AMXL/ML/WH/BK



MIAMI / BLACK
Gloss Warm White Door,
Doors with 1/2" (12mm) Black,
Solid Surface
D2/347AMXL/MM/GW



MIAMI / WHITE
Gloss Warm White Door,
Doors with 1/2" (12mm) White,
Solid Surface
D2/347AMXL/MM/GW/WH



DENVER - OAK
Natural Oak, Bark-Textured
Doors with 1/2" (12mm) Black,
Solid Surface
D2/347AMXL/DV/NO



DENVER - WALNUT
Medium Walnut, Bark-Textured
Doors with 1/2" (12mm) Black,
Solid Surface
D2/347AMXL/DV/MW



CHICAGO
Black Oak, Grass-Textured
Doors with 1/2" (12mm) Black,
Solid Surface
D2/347AMXL/CH/BO



OSLO
Black Oak Sides, Black Glass
Doors with 1/2" (12mm) Black,
Solid Surface
D2/347AMXL/OS/BG



ZURICH
Linear Texture - Opium Brown
Doors with 1/2" (12mm) Black,
Solid Surface
D2/347AMXL/ZU/OB



BERLIN
Wenge, Wave-Texture
Doors with 1/2" (12mm) Black,
Solid Surface
D2/347AMXL/BL/WE



BARCELONA - WHITE
Natural Walnut, Warm White
Doors, Beveled-Edge Top
D2/347AMXL/BA/NW/GW



BARCELONA - GLASS
Natural Walnut, Black Glass
Doors, Beveled-Edge Top
D2/347AMXL/BA/NW/BG