

NAV-TECH

INCORPORATED



DISTRIBUTOR CATALOG



Phone: (718) 272-4222 • Fax: (718) 272-4226

909 Essex Street Brooklyn, N.Y. 11208

Represented by Warshaw (718) 257-2111

Table of Contents

	Page
Con Edison Equipment	1
Con Edison Trans-S Enclosures	2
Con Edison Trans-S 400 AMP Drawing	3-4
Con Edison Trans-S 800 AMP Drawing	5-6
Con Edison MSIOP-208 Drawing	7
Con Edison Trans-A Enclosures	8
Con Edison Trans-A 400 AMP Drawing	9
Con Edison Trans-A 800 AMP Drawing	10
Con Edison RT10P-A Drawing	11
Copper Detail CT Cabinets	12
Con Edison Combination Trans-S Switch Cabinets	13
TS/SW 400 AMP Line Top Drawing	14
TS/SW 400 AMP Line Bottom Drawing	15
TS/SW 800 AMP Line Top Drawing	16
TS/SW 800 AMP Line Bottom Drawing	17
Con Edison Approved Meter Sockets	18
LIPA Keyspan Equipment	19
LIPA 400 Trans-S Cabinet Drawing	20
LIPA 800 Trans-S Cabinet Drawing	21
LIPA Meter Socket MS10P MS7P Drawing	22
Orange & Rockland Equipment	23
Orange & Rockland 400 AMP Trans-S Drawing	24
Orange & Rockland 800 AMP Trans-S Drawing	25
Orange & Rockland Meter Socket MS10P MS7P Drawing	26
Screw Cover Boxes	27
Screw Cover Wireways & Fittings	28
Wireway Fittings	29
Weatherproof Screw Cover Box / Raintight Screw Cover Boxes	30
Hinge cover Boxes / Fire Alarm Box	31
Raintight Trough / Weatherproof Trough	32
Covers Only	33
Gang Boxes 1 5/8 - 2 1/2	34
Raised Covers 1/2" - 3/4" - 1"	35
Gang Box Collars	36
Gang Box Flat Covers / Toggle Covers & Partitions	37
Grounding Busbars	38
Accessories	39

CON EDISON EQUIPMENT



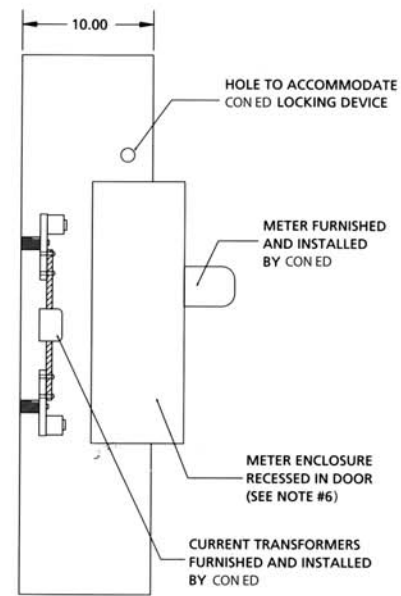
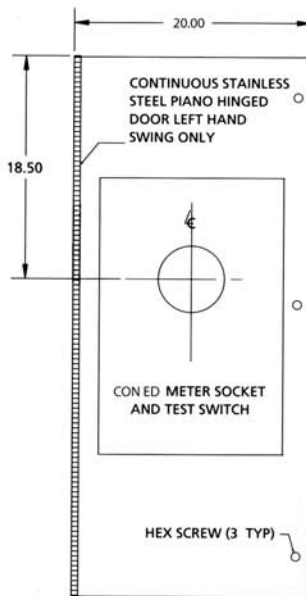
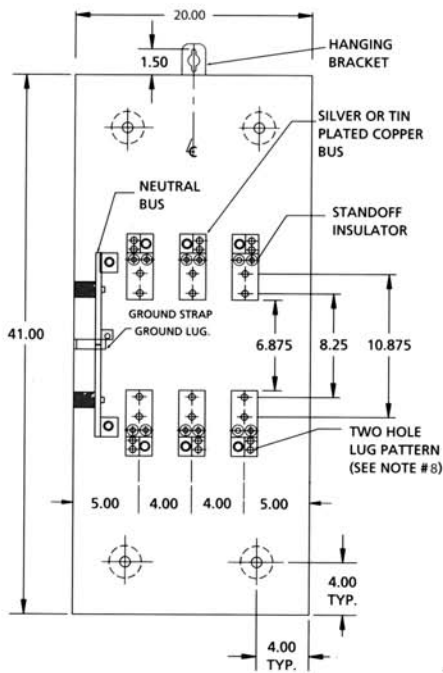
Con Ed Spec.	Navtech Cat. No	Size Description	Volts	Amps	List Price
205	N-205	10x10x5		100	\$72.00
205	RTN-205	10x10x5		100	190.00
215	N-215	24x12x8		200	144.00
215	RTN-215	24x12x8		200	330.00
484	N-484	30x18x12		400	280.00
484	RTN-484	30x18x12		400	520.00
220	N-220	12x12x8			240.00
104	N-104A	DEMAND METER	120		1000.00
104A	N-104A	DEMAND METER	120		1000.00
	N-150	METER BLOCK			82.00
	MP150				
	MP150	METER PAN			700.00

CON EDISON TRANS-S ENCLOSURES

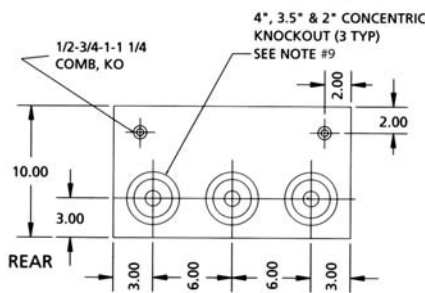


Con Ed Spec.	Navtech Cat. No	Size Description	Volts	Amps	List Price
745	TS-400-208	41x20x10	208	200-400 3PH	\$1,710.00
745	TS-400-240(1)	41x20x10	240	200-400 Single PH	1,710.00
745	TS-400-480	41x20x10	480	200-400 3PH	1,740.00
757	TS-800-208	48x24x10	208	400-800 3PH	2,110.00
750	TS-800-240(1)	48x24x10	240	600-800 Single PH	2,110.00
757	TS-800-480	48x24x10	480	400-800 3PH	2,200.00
751	MS-10P-208	21x14x5	208	30 AMP (CONT)	590.00
751	MS-10P-480	21x14x5	480	30 AMP (CONT)	620.00
	MS-7P-208	21x14x5	240	30 AMP (CONT)	590.00

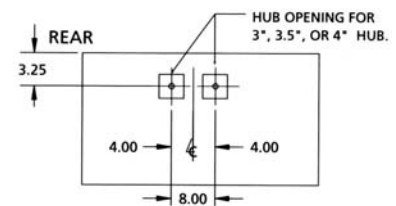
**CON EDISON 400 AMP TRANS "S"
CURRENT TRANSFORMER CABINET (NEMA 3R)
200 AMP. & 400 AMP., 240 V & 480V AC RATED
CATALOG NUMBER TS-400-208
TS-400-480**



SIDE VIEW



BOTTOM VIEW



TOP VIEW

NOTES:

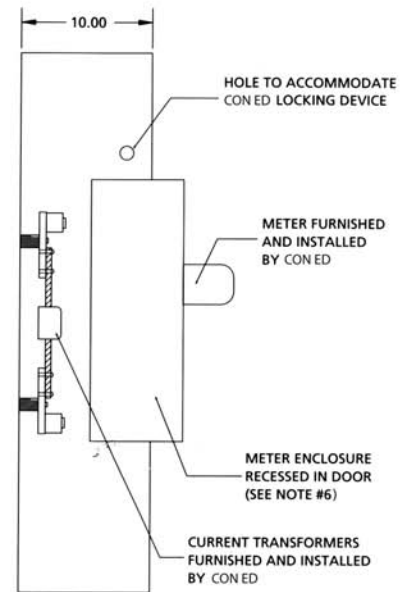
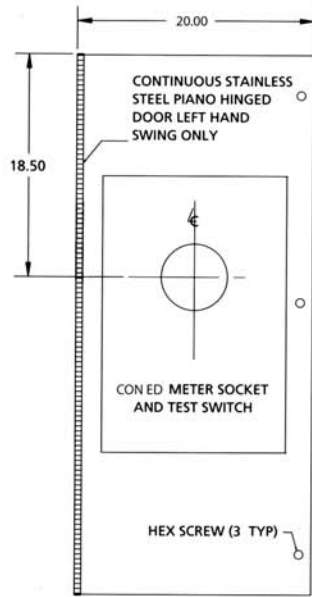
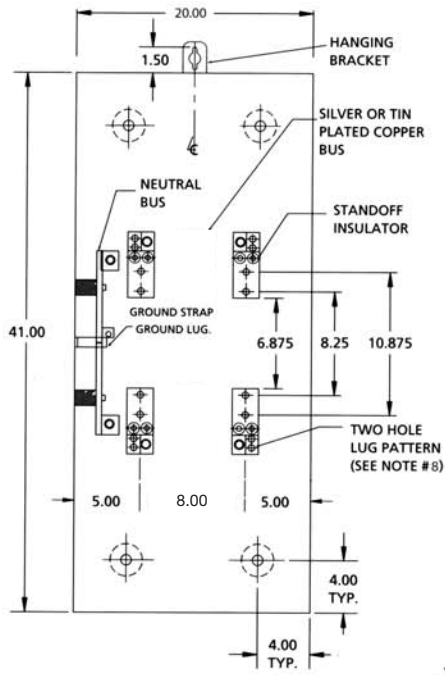
1. CABINET SHALL BE RATED NEMA 3R AND SHALL BE CONSTRUCTED FROM CODE GAUGE GALVANIZED OR GALVANIZED STEEL
2. BUS BAR SHALL BE SILVER OR TIN PLATED AND SHALL BE SIZED PER THE NEC.
3. BUS BAR SHALL BE MOUNTED IN THE CABINET BY MEANS OF STANDOFF INSULATORS OR INSULATED MOUNTING BRACKETS. INSULATING MATERIALS SHALL CONFORM TO THE APPLICABLE SECTIONS OF UL 746 AND UL 94. CABINET SHALL BE UL APPROVED AND N.Y.C. ADVISORY BOARD.
4. THE RIGHT HAND SIDE OF THE CABINET SHALL ALLOW FOR LINE AND LOAD CABLES TO ENTER AND EXIT THROUGH THE BOTTOM OF THE CABINET. THIS SPACE SHALL ALLOW FOR THE CABLES TO MEET THE MINIMUM BENDING RADIUS TO NEAREST PHASE OR NEUTRAL BUS AS PER THE NEC.
5. THE SHORT CIRCUIT WITHSTAND CAPABILITY OF THE CABINET ASSEMBLY SHALL BE A MINIMUM OF 18,000 SYMMETRICAL AMPERES.
6. CABINET DESIGN SHALL HAVE PROVISIONS FOR A SOLID DOOR TO ALLOW FOR THE METER ENCLOSURE TO BE MOUNTED REMOTELY FROM THE CABINET.
7. METERING COMPARTMENT TO BE TOTALLY ISOLATED FROM C. T. COMPARTMENT. FOR "REMOTE" USE CAT. NO. (IOP - 208MS OR IOP -480MS) AND CONFORM TO MES #751.
8. CABINET MAY BE DESIGNED WITH A SINGLE OR DOUBLE DOOR AS NECESSARY TO CONFORM WITH THE APPLICABLE STANDARDS. OVERALL DIMENSIONS SHALL BE KEPT TO A MINIMUM.
9. HEX HEAD OR THUMB SCREWS MAY BE FURNISHED INSTEAD OF A THREE POINT LATCH.
10. MANUFACTURER SHALL FURNISH AND INSTALL 1/2 - 13 STUDS WITH SPLIT LOCK WASHERS, RING WASHERS AND HEX NUTS FOR C. T. MOUNTING.
11. USE ONLY MANUFACTURER'S APPROVED LUG PROVIDED. LUGS ARE RATED FOR (1) 600 MCM - #4 OR (2) 250 MCM - #4 CABLES.

12. ONLY FACTORY PREFABRICATED KNOCKOUTS ON THE ENCLOSURE SHALL BE USED.
13. PROVIDE #12 AWG STRANDED (19/25) THHN COPPER COLOR CODED WIRE FROM TEST SWITCH/METER SOCKET METERING COMPARTMENT INTO C. T. COMPARTMENT. LEAVE 5 FT. OF WIRE FOR FUTURE CONNECTION TO CURRENT TRANSFORMERS. ALL WIRING IN ACCORDANCE WITH CON EDISON MES #195, REV. 9.
14. SECURITY HARDWARE TO BE PROVIDED FOR CT CABINET DOOR AND METER ENCLOSURE - TO BE INSTALLED BY CONTRACTOR.
15. THIS STANDARD SHALL NOT BE USED AS A DESIGN CRITERIA. DIMENSIONS SHOWN ARE RECOMMENDED MINIMUMS ONLY. LARGER DIMENSIONS SHALL BE USED WHERE REQUIRED BY CODE.

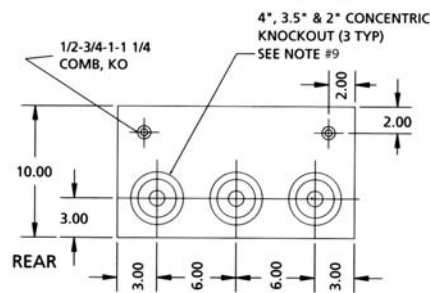
INSTALLATION DETAILS:

1. MAXIMUM CABLE SIZES: 1 SET OF 500 KCMILS OR 2 SETS OF 4/0 AWG CU. LUG SIZE RANGES FROM 600 MCM - #4 OR (2) 250 KCMILS - 1/0 IF AL. CABLES ARE USED.
2. USE ONLY MANUFACTURER'S APPROVED LUG PROVIDED.
3. 1 FT. CLEARANCE REQUIRED ON THE LEFT (HINGED) SIDE OF THE CABINET TO A WALL OR OBSTRUCTION FOR METER CLEARANCE. MINIMUM OF 6" CLEARANCE ON THE RIGHT. (NON HINGED) SIDE OF THE CABINET, NEEDED FOR INSTALLATION OF LOCKING DEVICES. SPACE BETWEEN ADJACENT CABINETS NO LESS THAN 6 INCHES. (SEE INSTALLATION DETAIL).
4. 265/460 VOLT SERVICE REQUIRES A DISCONNECT SWITCH BEFORE THE CT CABINET.
5. METER ENCLOSURES MOUNTED REMOTELY MUST CONFORM WITH MES 195 IN WIRE SIZING CONNECTIONS, COLOR CODING, ETC.
6. FINAL CONNECTIONS PER MES 195 - FOR 4 WIRE INSTALLATIONS.

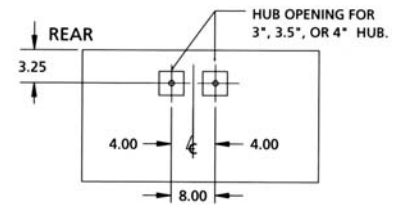
**CON EDISON 400 AMP TRANS "S"
CURRENT TRANSFORMER CABINET (NEMA 3R)
200 AMP. & 400 AMP., 240 V & 480V AC RATED
CATALOG NUMBER TS-400-240(1)**



SIDE VIEW



BOTTOM VIEW



TOP VIEW

NOTES:

- CABINET SHALL BE RATED NEMA 3R AND SHALL BE CONSTRUCTED FROM CODE GAUGE GALVANIZED OR GALVANIZED STEEL
- BUS BAR SHALL BE SILVER OR TIN PLATED AND SHALL BE SIZED PER THE NEC.
- BUS BAR SHALL BE MOUNTED IN THE CABINET BY MEANS OF STANDOFF INSULATORS OR INSULATED MOUNTING BRACKETS. INSULATING MATERIALS SHALL CONFORM TO THE APPLICABLE SECTIONS OF UL 746 AND UL 94. CABINET SHALL BE UL APPROVED AND N.Y.C. ADVISORY BOARD.
- THE RIGHT HAND SIDE OF THE CABINET SHALL ALLOW FOR LINE AND LOAD CABLES TO ENTER AND EXIT THROUGH THE BOTTOM OF THE CABINET. THIS SPACE SHALL ALLOW FOR THE CABLES TO MEET THE MINIMUM BENDING RADIUS TO NEAREST PHASE OR NEUTRAL BUS AS PER THE NEC.
- THE SHORT CIRCUIT WITHSTAND CAPABILITY OF THE CABINET ASSEMBLY SHALL BE A MINIMUM OF 18,000 SYMMETRICAL AMPERES.
- CABINET DESIGN SHALL HAVE PROVISIONS FOR A SOLID DOOR TO ALLOW FOR THE METER ENCLOSURE TO BE MOUNTED REMOTELY FROM THE CABINET.
- METERING COMPARTMENT TO BE TOTALLY ISOLATED FROM C. T. COMPARTMENT. FOR "REMOTE" USE CAT. NO. (IOP - 208MS OR IOP -480MS) AND CONFORM TO MES #751.
- CABINET MAY BE DESIGNED WITH A SINGLE OR DOUBLE DOOR AS NECESSARY TO CONFORM WITH THE APPLICABLE STANDARDS. OVERALL DIMENSIONS SHALL BE KEPT TO A MINIMUM.
- HEX HEAD OR THUMB SCREWS MAY BE FURNISHED INSTEAD OF A THREE POINT LATCH.
- MANUFACTURER SHALL FURNISH AND INSTALL 1/2 - 13 STUDS WITH SPLIT LOCK WASHERS, RING WASHERS AND HEX NUTS FOR C. T. MOUNTING.
- USE ONLY MANUFACTURER'S APPROVED LUG PROVIDED. LUGS ARE RATED FOR (1) 600 MCM - #4 OR (2) 250 MCM - #4 CABLES.

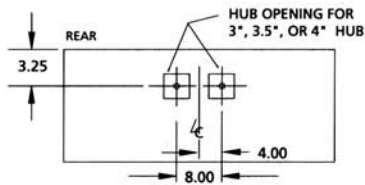
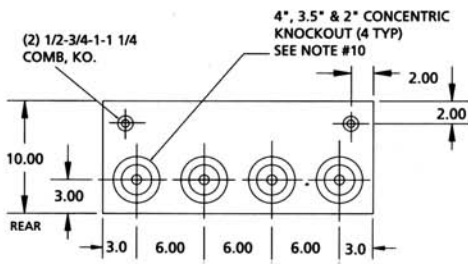
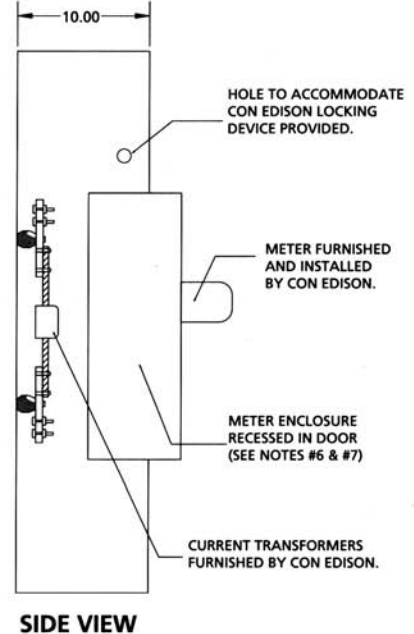
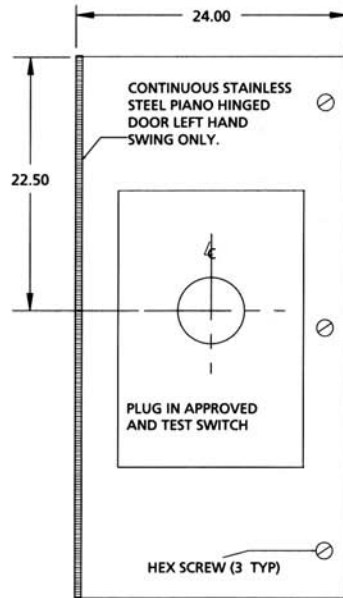
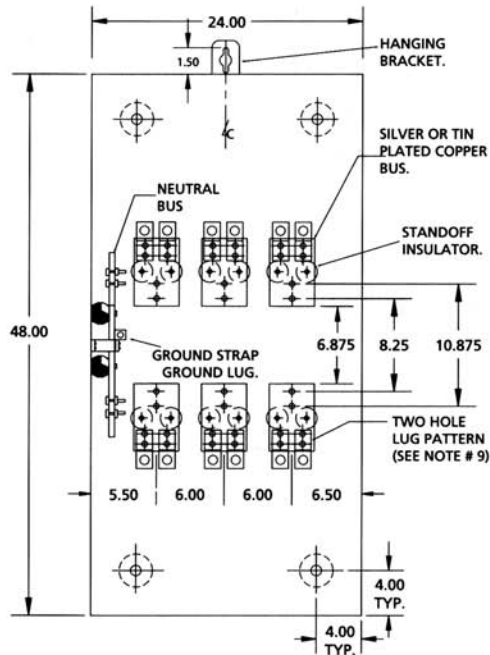
- ONLY FACTORY PREFABRICATED KNOCKOUTS ON THE ENCLOSURE SHALL BE USED.
- PROVIDE #12 AWG STRANDED (19/25) THHN COPPER COLOR CODED WIRE FROM TEST SWITCH/METER SOCKET METERING COMPARTMENT INTO C. T. COMPARTMENT. LEAVE 5 FT. OF WIRE FOR FUTURE CONNECTION TO CURRENT TRANSFORMERS. ALL WIRING IN ACCORDANCE WITH CON EDISON MES #195, REV. 9.
- SECURITY HARDWARE TO BE PROVIDED FOR CT CABINET DOOR AND METER ENCLOSURE - TO BE INSTALLED BY CONTRACTOR.
- THIS STANDARD SHALL NOT BE USED AS A DESIGN CRITERIA. DIMENSIONS SHOWN ARE RECOMMENDED MINIMUMS ONLY. LARGER DIMENSIONS SHALL BE USED WHERE REQUIRED BY CODE.

INSTALLATION DETAILS:

- MAXIMUM CABLE SIZES: 1 SET OF 500 KCMILS OR 2 SETS OF 4/0 AWG CU. LUG SIZE RANGES FROM 600 MCM - #4 OR (2) 250 KCMILS - 1/0 IF AL. CABLES ARE USED.
- USE ONLY MANUFACTURER'S APPROVED LUG PROVIDED.
- 1 FT. CLEARANCE REQUIRED ON THE LEFT (HINGED) SIDE OF THE CABINET TO A WALL OR OBSTRUCTION FOR METER CLEARANCE. MINIMUM OF 6" CLEARANCE ON THE RIGHT (NON HINGED) SIDE OF THE CABINET, NEEDED FOR INSTALLATION OF LOCKING DEVICES. SPACE BETWEEN ADJACENT CABINETS NO LESS THAN 6 INCHES. (SEE INSTALLATION DETAIL).
- 265/460 VOLT SERVICE REQUIRES A DISCONNECT SWITCH BEFORE THE CT CABINET.
- METER ENCLOSURES MOUNTED REMOTELY MUST CONFORM WITH MES 195 IN WIRE SIZING CONNECTIONS, COLOR CODING, ETC.
- FINAL CONNECTIONS PER MES 195 - FOR 4 WIRE INSTALLATIONS.



**CON EDISON 800 AMP TRANS "S"
CURRENT TRANSFORMER CABINET (NEMA 3R)
600 AMP. & 800 AMP., 240V & 480V AC RATED
CATALOG NUMBER TS-800-208, TS-800-480**

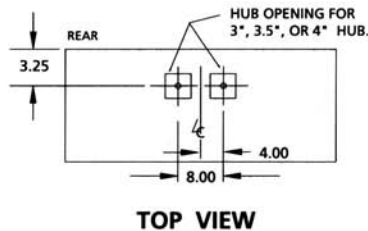
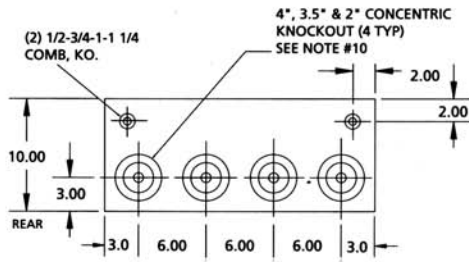
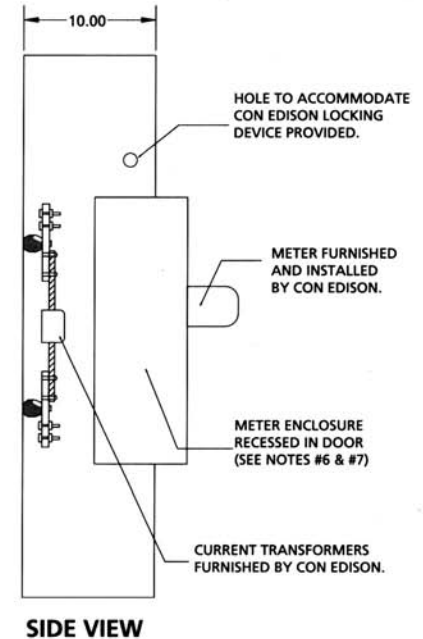
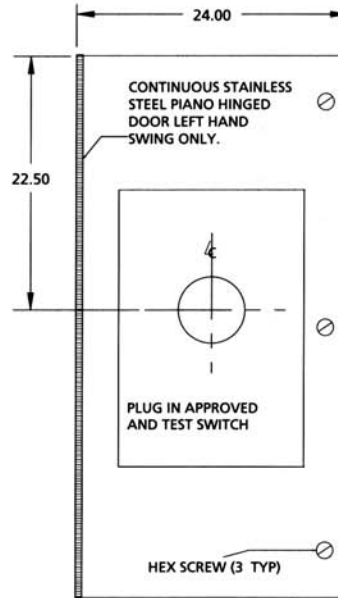
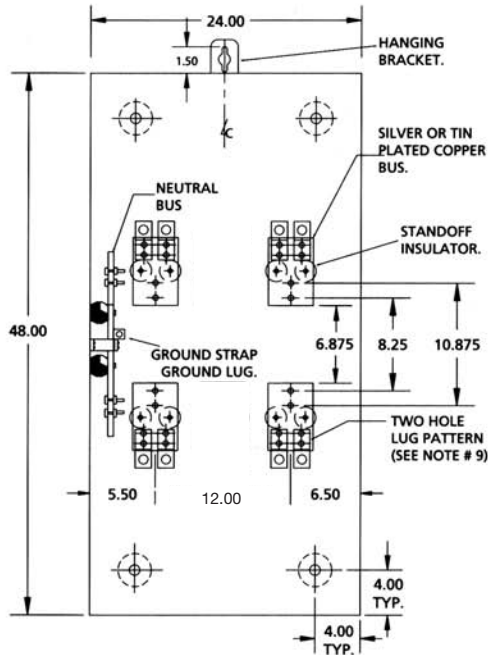


BOTTOM VIEW

TOP VIEW

- CABINET SHALL BE RATED NEMA 3R AND SHALL BE CONSTRUCTED FROM CODE GAUGE GALVANIZED OR GALVANNEALED STEEL.
- BUS BAR SHALL BE SILVER OR TIN PLATED AND SHALL BE SIZED PER THE NEC.
- BUS BAR SHALL BE MOUNTED IN THE CABINET BY MEANS OF STANDOFF INSULATORS OR INSULATED MOUNTING BRACKETS. INSULATING MATERIAL SHALL CONFORM TO THE APPLICABLE SECTIONS OF UL 746 AND UL 94. THE CABINET SHALL BE UL, CON EDISON AND N.Y.C. ADVISORY BOARD APPROVED.
- THE RIGHT HAND SIDE OF THE CABINET SHALL ALLOW FOR LINE AND LOAD CABLES, TO ENTER AND EXIT THROUGH THE TOP OR THE BOTTOM OF THE CABINET. THIS SPACE SHALL ALLOW FOR THE CABLES TO MEET THE MINIMUM BENDING RADIUS TO NEAREST PHASE OR NEUTRAL BUS. AS PER THE NEC.
- THE SHORT CIRCUIT WITHSTAND CAPABILITY OF THE CABINET ASSEMBLY SHALL BE RATED AT 50,000 RMS SYMMETRICAL AMPERES.
- CABINET DESIGN SHALL HAVE PROVISIONS FOR A SOLID DOOR TO ALLOW FOR THE METER ENCLOSURE TO BE MOUNTED REMOTELY FROM THE CABINET.
- METERING COMPARTMENT TO BE TOTALLY ISOLATED FROM CT COMPARTMENT FOR REMOTE USE. USE CAT. NO. RTS800-208 WITH MS10P-208 OR RTS800-480 WITH MS10P-480. ALL TO CONFORM TO MES # 195.
- MANUFACTURER SHALL FURNISH AND INSTALL 1/2-13 STUDS WITH SPLIT LOCK WASHERS AND HEX NUTS FOR CT MOUNTING.
- USE ONLY MANUFACTURER'S APPROVED LUG PROVIDED. (2) LUGS PER TERMINAL, EACH RATED FOR (1) 600 MCM-#4 OR (2) 250 MCM-#4 CABLES.
- ONLY FACTORY PREFABRICATED KNOCKOUTS ON THE ENCLOSURE SHALL BE USED**
- PROVIDE PREWIRED TRANS "S" UNIT WITH #12 AWG STRANDED (19/25) THHN COPPER COLOR CODED WIRE FROM THE TEST SWITCH TO THE SOCKET ASSEMBLY AND FROM THE TEST SWITCH METERING COMPARTMENT INTO THE CT COMPARTMENT. LEAVE 7 FT. OF WIRE FOR FUTURE CONNECTION TO THE CURRENT TRANSFORMERS. USE EITHER HOOK OR RING TYPE TINNED COPPER LUGS FOR TERMINATIONS. ALL WIRING IN ACCORDANCE WITH CON EDISON MES #195, EXCEPT AS NOTED IN MES #751 FOR FORM 9S METER SOCKET.
- SECURITY HARDWARE TO BE PROVIDED FOR CT CABINET DOOR AND METER ENCLOSURE COVER (TO BE INSTALLED BY CONTRACTOR).
- 265/460 VOLT SERVICE REQUIRES A DISCONNECT SWITCH BEFORE THE CT CABINET.

**CON EDISON 800 AMP TRANS "S"
CURRENT TRANSFORMER CABINET (NEMA 3R)
600 AMP. & 800 AMP., 240V & 480V AC RATED
CATALOG NUMBER TS-800-240(1)**



BOTTOM VIEW

TOP VIEW

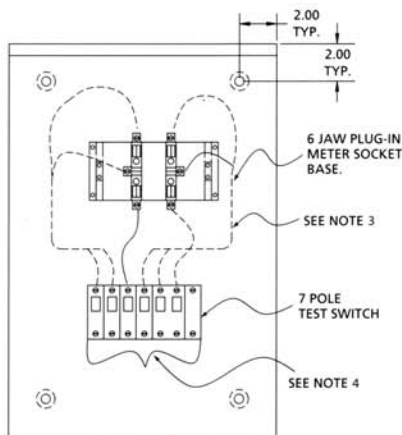
- CABINET SHALL BE RATED NEMA 3R AND SHALL BE CONSTRUCTED FROM CODE GAUGE GALVANIZED OR GALVANNEALED STEEL.
- BUS BAR SHALL BE SILVER OR TIN PLATED AND SHALL BE SIZED PER THE NEC.
- BUS BAR SHALL BE MOUNTED IN THE CABINET BY MEANS OF STANDOFF INSULATORS OR INSULATED MOUNTING BRACKETS. INSULATING MATERIAL SHALL CONFORM TO THE APPLICABLE SECTIONS OF UL 746 AND UL 94. THE CABINET SHALL BE UL, CON EDISON AND N.Y.C. ADVISORY BOARD APPROVED.
- THE RIGHT HAND SIDE OF THE CABINET SHALL ALLOW FOR LINE AND LOAD CABLES, TO ENTER AND EXIT THROUGH THE TOP OR THE BOTTOM OF THE CABINET. THIS SPACE SHALL ALLOW FOR THE CABLES TO MEET THE MINIMUM BENDING RADIUS TO NEAREST PHASE OR NEUTRAL BUS. AS PER THE NEC.
- THE SHORT CIRCUIT WITHSTAND CAPABILITY OF THE CABINET ASSEMBLY SHALL BE RATED AT 50,000 RMS SYMMETRICAL AMPERES.
- CABINET DESIGN SHALL HAVE PROVISIONS FOR A SOLID DOOR TO ALLOW FOR THE METER ENCLOSURE TO BE MOUNTED REMOTELY FROM THE CABINET.
- METERING COMPARTMENT TO BE TOTALLY ISOLATED FROM CT COMPARTMENT FOR REMOTE USE. USE CAT. NO. RTS800-208 WITH MS10P-208 OR RTS800-480 WITH MS10P-480. ALL TO CONFORM TO MES # 195.
- MANUFACTURER SHALL FURNISH AND INSTALL 1/2-13 STUDS WITH SPLIT LOCK WASHERS AND HEX NUTS FOR CT MOUNTING.
- USE ONLY MANUFACTURER'S APPROVED LUG PROVIDED. (2) LUGS PER TERMINAL, EACH RATED FOR (1) 600 MCM-#4 OR (2) 250 MCM -#4 CABLES.
- ONLY FACTORY PREFABRICATED KNOCKOUTS ON THE ENCLOSURE SHALL BE USED**
- PROVIDE WIRED TRANS "S" UNIT WITH #12 AWG STRANDED (19/25) THHN COPPER COLOR CODED WIRE FROM THE TEST SWITCH TO THE SOCKET ASSEMBLY AND FROM THE TEST SWITCH METERING COMPARTMENT INTO THE CT COMPARTMENT. LEAVE 7 FT. OF WIRE FOR FUTURE CONNECTION TO THE CURRENT TRANSFORMERS. USE EITHER HOOK OR RING TYPE TINNED COPPER LUGS FOR TERMINATIONS. ALL WIRING IN ACCORDANCE WITH CON EDISON MES #195, EXCEPT AS NOTED IN MES #751 FOR FORM 9S METER SOCKET.
- SECURITY HARDWARE TO BE PROVIDED FOR CT CABINET DOOR AND METER ENCLOSURE COVER (TO BE INSTALLED BY CONTRACTOR).
- 265/460 VOLT SERVICE REQUIRES A DISCONNECT SWITCH BEFORE THE CT CABINET.

CON EDISON "S" PLUG-IN METER SOCKET AND TEST SWITCH

30 AMP. CONT., 240V & 480V AC RATED (NEMA 3R)

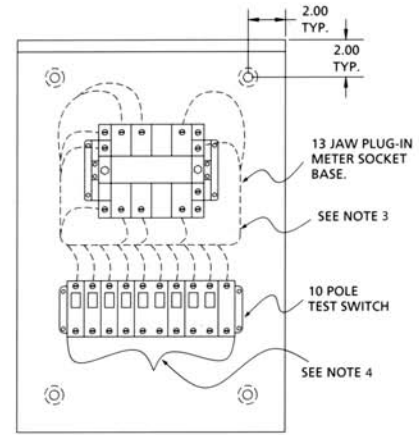


SINGLE PHASE

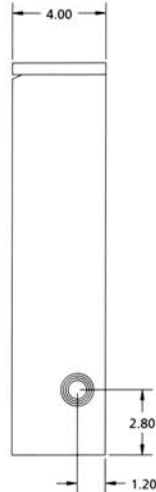


FRONT VIEW NO COVER
MS7P-208

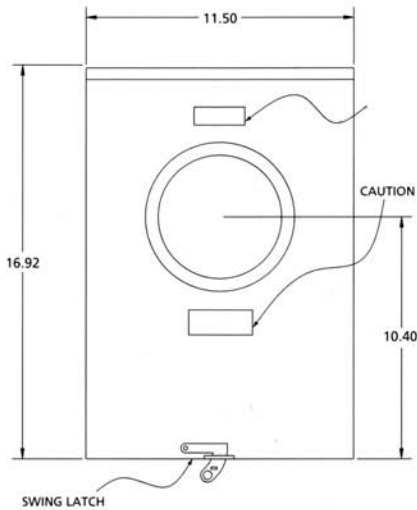
THREE PHASE



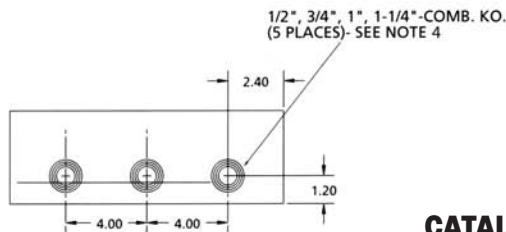
FRONT VIEW NO COVER
MS10P-208



SIDE VIEW



TYPICAL FRONT VIEW



TYPICAL BOTTOM VIEW

CATALOG NUMBERS
MS10P-208
MS10P-480
MS7P-208



1. CABINET SHALL BE RATED NEMA 3R AND SHALL BE CONSTRUCTED FROM CODE GAUGE GALVANIZED OR GALVANNEALED STEEL.
2. **ONLY FACTORY PREFABRICATED KNOCKOUTS ON THE ENCLOSURE SHALL BE USED.**
3. STANDARD #8909A FOR 1 PHASE 3 WIRE FORM 45 METER SOCKET, AND STANDARD #8509A FOR 3 PHASE 4 WIRE WYE FORM 9S METER SOCKET, IS PROVIDED PREWIRED FROM TEST SWITCH TO METER BASE IN ACCORD WITH LIPA CONSTRUCTION.
4. WIRE PROVIDED AND INSTALLED BY CONTRACTOR.

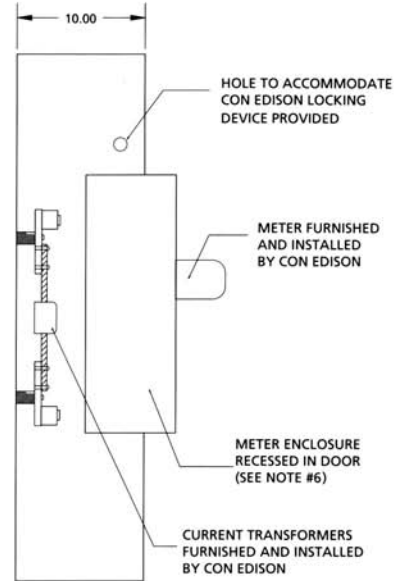
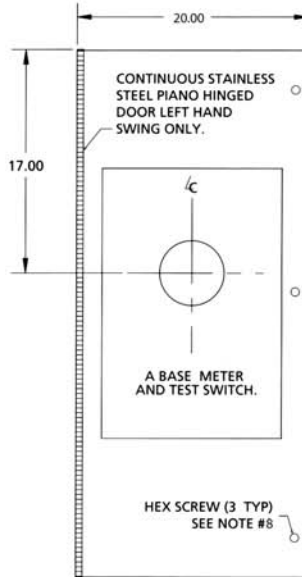
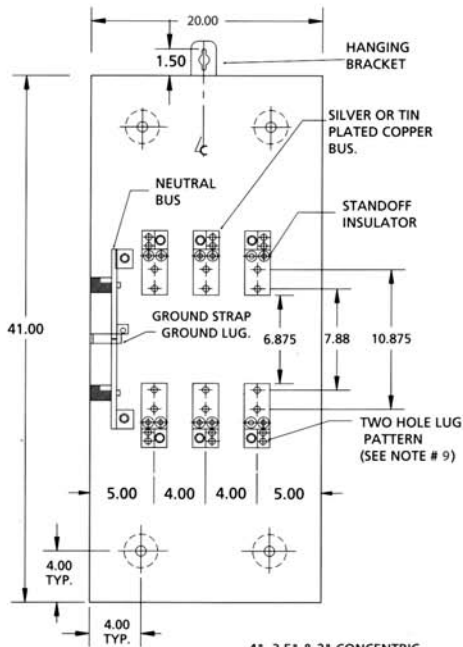
CON EDISON TRANS - A ENCLOSURES



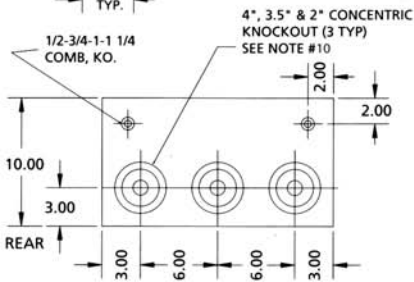
Con Ed Spec.	Navtech Cat. No	Size Description	Volts	Amps	List Price
745	TA-400-240	41x20x10	600	200-400 3PH	\$1,710.00
745	TA-400-480	41x20x10	600	200-400 3PH	1,740.00
750	TA-800-240	48x24x10	600	400-800 3PH	2,110.00
750	TA-800-480	48x24x10	600	400-800 3PH	2,200.00
745 "A" BASE	RT10P-240	21x14x5	240	30A Cont.	590.00
745 "A" BASE	RT10PA-480	21x14x5	480	30A Cont.	620.00

*Three Phase Units shall be modified in the field to Single Phase as per Con Edison's Inspectors specifications.

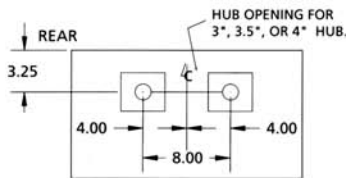
**CON EDISON 400 AMPERE TRANS "A"
CURRENT TRANSFORMER CABINET (NEMA 3R)
200 AMP. & 400 AMP., 240 V & 480V AC RATED
CATALOG NUMBER TA-400-240 TA-400-480**



SIDE VIEW



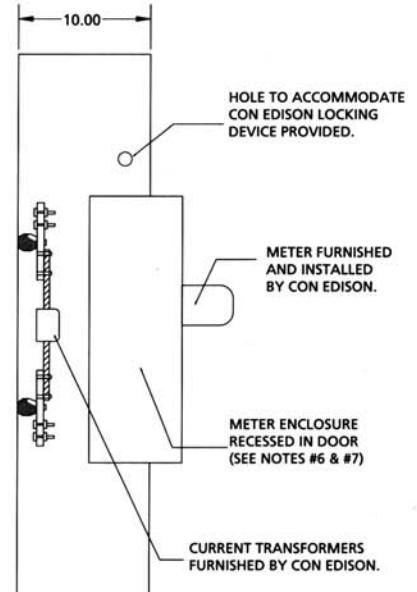
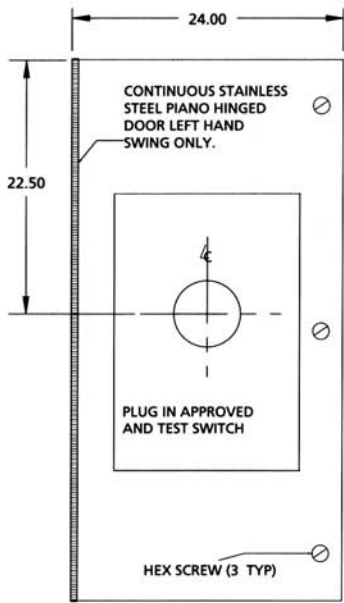
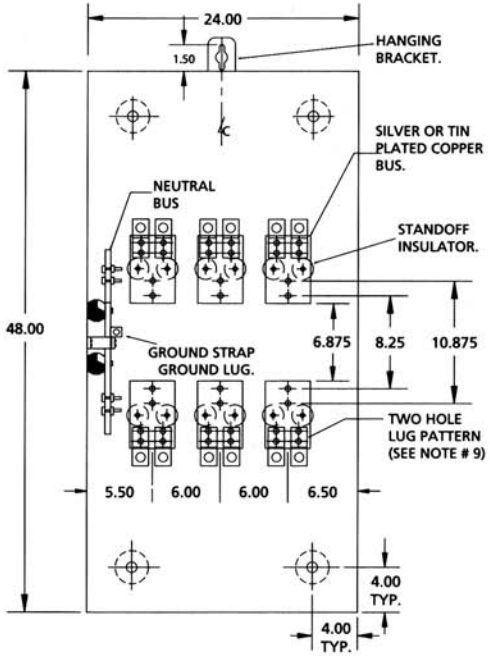
BOTTOM VIEW



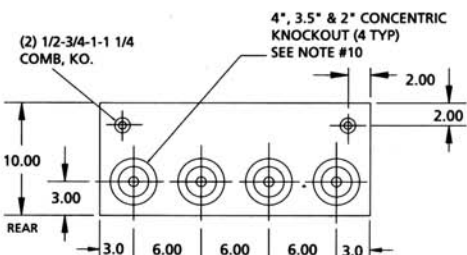
TOP VIEW

- CABINET SHALL BE RATED NEMA 3R AND SHALL BE CONSTRUCTED FROM CODE GAUGE GALVANIZED OR GALVANNEALED STEEL.
- BUS BAR SHALL BE SILVER OR TIN PLATED AND SHALL BE SIZED PER THE NEC.
- BUS BAR SHALL BE MOUNTED IN THE CABINET BY MEANS OF STANDOFF INSULATORS OR INSULATED MOUNTING BRACKETS. INSULATING MATERIAL SHALL CONFORM TO THE APPLICABLE SECTIONS OF UL 746 AND UL 94. CABINET SHALL BE UL APPROVED.
- THE RIGHT HAND SIDE OF THE CABINET SHALL ALLOW FOR LINE AND LOAD CABLES TO ENTER AND EXIT THROUGH THE TOP OR THE BOTTOM OF THE CABINET. THIS SPACE SHALL ALLOW FOR THE CABLES TO MEET THE MINIMUM BENDING RADIUS TO NEAREST PHASE OR NEUTRAL BUS AS PER THE NEC.
- THE SHORT CIRCUIT WITHSTAND CAPABILITY OF THE CABINET ASSEMBLY SHALL BE A MAXIMUM OF 50,000 RMS SYMMETRICAL AMPERES.
- CABINET DESIGN SHALL HAVE PROVISIONS FOR A SOLID DOOR TO ALLOW FOR THE METER ENCLOSURE TO BE MOUNTED REMOTELY FROM THE CABINET.
- HEX HEAD OR THUMB SCREWS MAY BE FURNISHED INSTEAD OF A THREE POINT LATCH.
- MANUFACTURER SHALL FURNISH AND INSTALL $\frac{1}{2}$ -13 STUDS WITH SPLIT LOCK WASHERS AND HEX NUTS FOR CT MOUNTING.
- USE ONLY MANUFACTURER'S APPROVED LUG PROVIDED. EACH LUG IS RATED FOR (1) 600 MCM-#4 OR (2) 250MCM-#4 CABLES.
- ONLY FACTORY PREFABRICATED KNOCKOUTS ON THE ENCLOSURE SHALL BE USED.**
- PROVIDE #12 AWG SOLID WHITE INSULATED COPPER WIRE, 12" LONG LEFT ABOVE THE METERING TEST SWITCH, WIRE TO BE FORMED AND MOUNTED ON TEST SWITCH.
- PROVIDE #12 AWG STRANDED (19/25) THHN COPPER COLOR CODED WIRE FROM TEST SWITCH METERING COMPARTMENT INTO CT COMPARTMENT. LEAVE 5 FT. OF WIRE FOR FUTURE CONNECTION TO CURRENT TRANSFORMERS. ALL WIRING IN ACCORDANCE WITH CON EDISON MES #195.
- SECURITY HARDWARE TO BE PROVIDED FOR CT CABINET DOOR AND METER ENCLOSURE COVER (TO BE INSTALLED BY CONTRACTOR).
- 265/460 VOLT SERVICE REQUIRES A DISCONNECT SWITCH BEFORE THE CT CABINET.

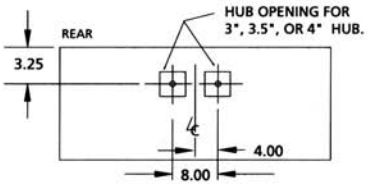
**CON EDISON 800 AMPERE TRANS "A"
CURRENT TRANSFORMER CABINET (NEMA 3R)
600 AMP. & 800 AMP., 240V AC & 480V AC RATED
CATALOG NUMBER TA-800-240 TA-800-480**



SIDE VIEW



BOTTOM VIEW

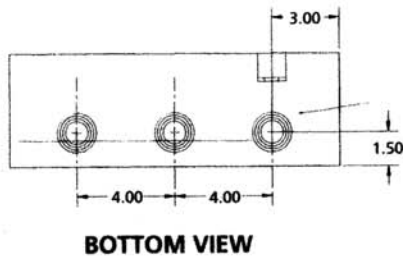
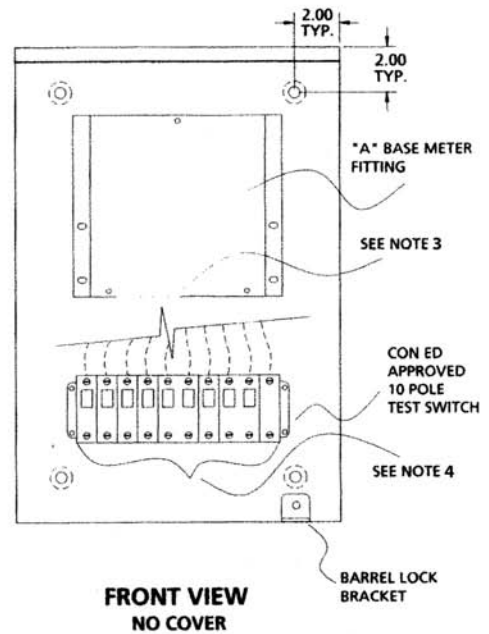
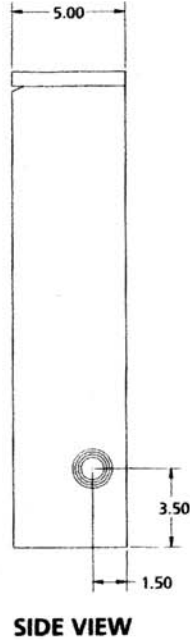
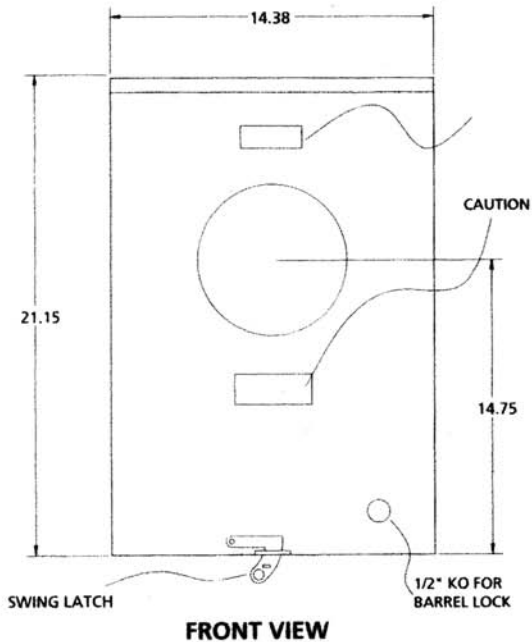


TOP VIEW

**CON EDISON SPEC. #MES 750
CATALOG NUMBERS
TA-800-240
RT10P-A**

- CABINET SHALL BE RATED NEMA 3R AND SHALL BE CONSTRUCTED FROM CODE GAUGE GALVANIZED OR GALVANNEALED STEEL.
- BUS BAR SHALL BE SILVER OR TIN PLATED AND SHALL BE SIZED PER THE NEC.
- BUS BAR SHALL BE MOUNTED IN THE CABINET BY MEANS OF STANDOFF INSULATORS OR INSULATED MOUNTING BRACKETS. INSULATING MATERIAL SHALL CONFORM TO THE APPLICABLE SECTIONS OF UL 746 AND UL 94. CABINET SHALL BE UL APPROVED.
- THE RIGHT HAND SIDE OF THE CABINET SHALL ALLOW FOR LINE AND LOAD CABLES TO ENTER AND EXIT THROUGH THE TOP OR THE BOTTOM OF THE CABINET. THIS SPACE SHALL ALLOW FOR THE CABLES TO MEET THE MINIMUM BENDING RADIUS TO NEAREST PHASE OR NEUTRAL BUS AS PER THE NEC.
- THE SHORT CIRCUIT WITHSTAND CAPABILITY OF THE CABINET ASSEMBLY SHALL BE A MAXIMUM OF 50,000 RMS SYMMETRICAL AMPERES.
- CABINET DESIGN SHALL HAVE PROVISIONS FOR A SOLID DOOR TO ALLOW FOR THE METER ENCLOSURE TO BE MOUNTED REMOTELY FROM THE CABINET.
- HEX HEAD OR THUMB SCREWS MAY BE FURNISHED INSTEAD OF A THREE POINT LATCH.
- MANUFACTURER SHALL FURNISH AND INSTALL _13 STUDS WITH SPLIT LOCK WASHERS AND HEX NUTS FOR CT MOUNTING.
- USE ONLY MANUFACTURER'S APPROVED LUG PROVIDED. EACH LUG IS RATED FOR (1) 600 MCM-#4 OR (2) 250MCM-#4 CABLES.
- ONLY FACTORY PREFABRICATED KNOCKOUTS ON THE ENCLOSURE SHALL BE USED.**
- PROVIDE #12 AWG SOLID WHITE INSULATED COPPER WIRE, 12' LONG LEFT ABOVE THE METERING TEST SWITCH, WIRE TO BE FORMED AND MOUNTED ON TEST SWITCH.
- PROVIDE #12 AWG STRANDED (19/25) THHN COPPER COLOR CODED WIRE FROM TEST SWITCH METERING COMPARTMENT INTO CT COMPARTMENT. LEAVE 5 FT. OF WIRE FOR FUTURE CONNECTION TO CURRENT TRANSFORMERS. ALL WIRING IN ACCORDANCE WITH CON EDISON MES #195.
- SECURITY HARDWARE TO BE PROVIDED FOR CT CABINET DOOR AND METER ENCLOSURE COVER (TO BE INSTALLED BY CONTRACTOR).
- 265/460 VOLT SERVICE REQUIRES A DISCONNECT SWITCH BEFORE THE CT CABINET.

**CON EDISON "A" BASE METER SOCKET
AND TEST SWITCH
30 AMP. CONT., 240V & 480V AC RATED (NEMA 3R)**



1/2", 3/4", 1", 1-1/4" -COMB.KO
(5 PLACES)- SEE NOTE 2

**CATALOG NUMBERS
RT10PA-240
RT10PA-480**

1. CABINET SHALL BE RATED NEMA 3R AND SHALL BE CONSTRUCTED FROM CODE GAUGE GALVANIZED OR GALVANNEALED STEEL.
2. **ONLY FACTORY PREFABRICATED KNOCKOUTS ON THE ENCLOSURE SHALL BE USED.**
3. PROVIDED WITH #12 AWG SOLID WHITE INSULATED COPPER WIRE, 12" LONG ABOVE THE METERING TEST SWITCH. WIRE TO BE FORMED AND MOUNTED ON "A" BASE METER AT TIME OF INSTALLATION.
4. WIRE PROVIDED AND INSTALLED BY CONTRACTOR.



CON EDISON COPPER DETAIL BOXES/ CURRENT TRANSFORMER CABINETS



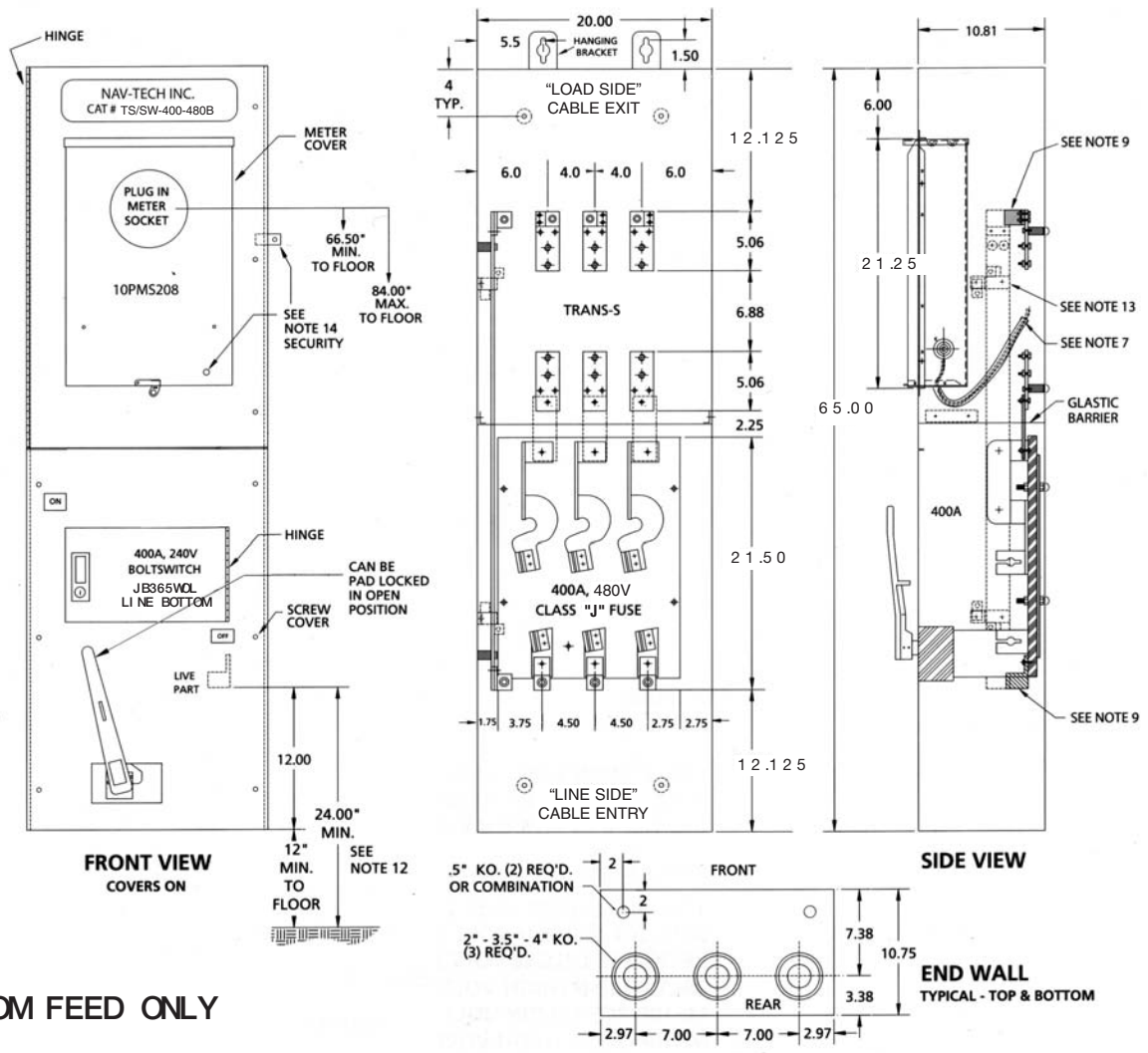
Con Ed Spec	Navtech Cat#	AMPS	Size	List Price
EO-9525-B	9525	400	48x24x18	\$2400.00
EO-9525-B	9525	400	54x24x18	2400.00
EO-9072-B	9072	800	68x26x18	2720.00
EO-9072-B	9072	1200	68x26x18	3170.00
EO-9073-B	9073	2000	78x34x18	3170.00
EO-9073-B	9073		84"	
EO-9073-B	9073		92"	
142	CT-36	400	27x36x10	790.00
142	CT-44	400	27x44x10	980.00
298	298CT	800	72x32x12	2970.00
298	298CT	1200	72x32x12	3530.00
298	298CT	1600	72x32x12	3800.00
377	377CT	As Required	As Required	CALL

CON EDISON TRANS-S/SWITCH COMBINATION UNITS



Con Ed Spec.	Navtech Cat. No	Size Description	Volts	Amps	List Price
745	TS/SW 400-240-B	70x20x11	240	400	\$4,640.00
745	TS/SW 400-240-T	65x20x11	240	400	4,410.00
745	TS/SW 400-480-B	65x20x11	480	400	4,980.00
745	TS/SW 400-480-T	70x20x11	480	400	4,760.00
750	TS/SW 800-240-B	82x24x12	240	600-800	7,000.00
750	TS/SW 800-240-T	76x24x12	240	600-800	6,650.00
750	TS/SW 800-480-B	76x24x12	480	600-800	7,430.00
750	TS/SW 800-480-T	82x24x12	480	600-800	7,090.00

TRANS "S" AND SWITCH COMBINATION
400 AMP., 240 VOLT CON EDISON - LINE BOTTOM
CATALOG NUMBERS: TS/SW-400-480B

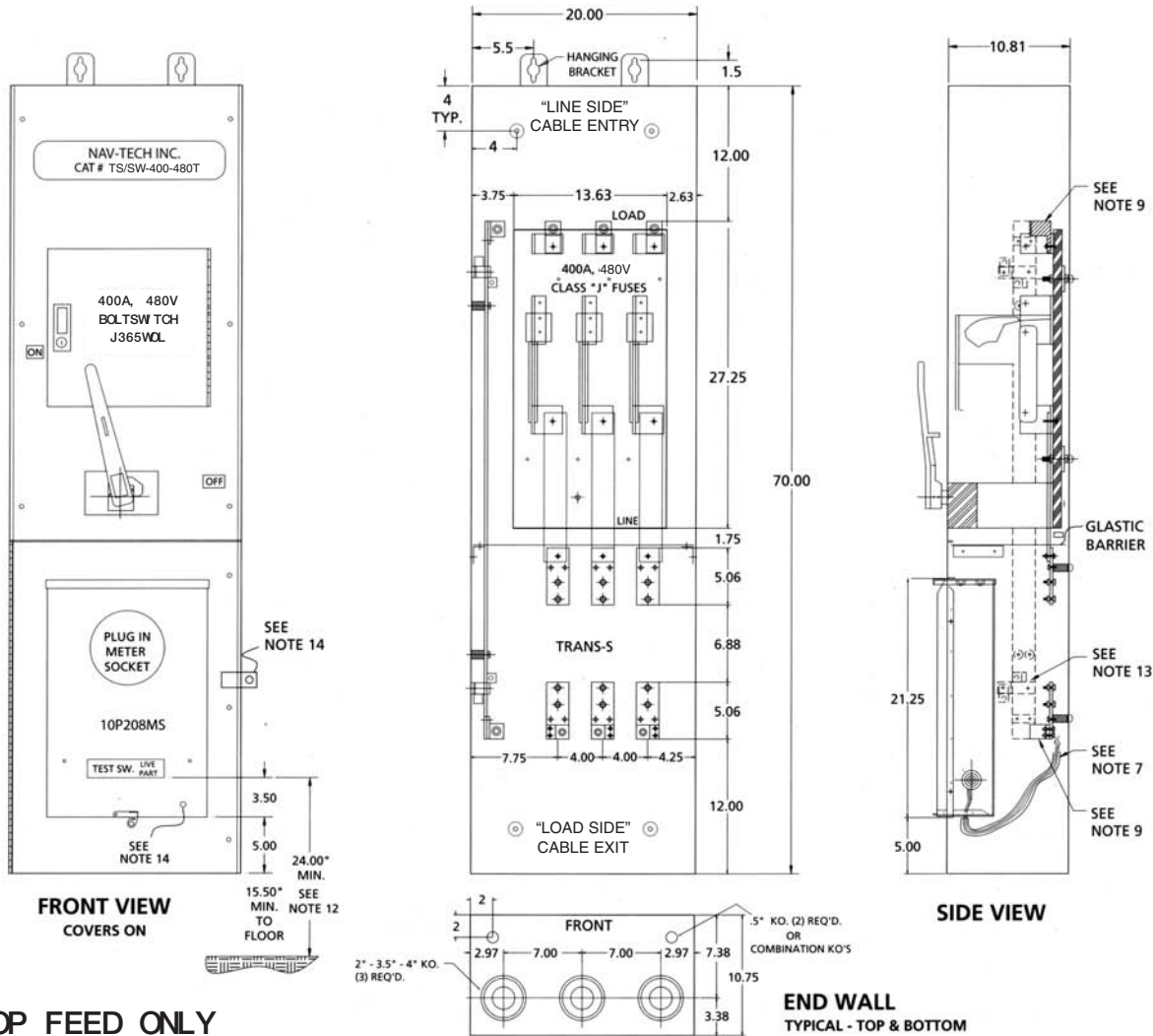


BOTTOM FEED ONLY

- CABINET SHALL BE RATED NEMA I (INDOOR ONLY) AND SHALL BE CONSTRUCTED FROM CODE GAUGE GALVANIZED OR GALVANEATED STEEL.
- BUS BAR SHALL BE SILVER OR TIN PLATED AND SHALL BE SIZED PER THE NEC.
- BUS BAR SHALL BE MOUNTED IN THE CABINET BY MEANS OF STANDOFF INSULATORS OR INSULATED MOUNTING BRACKETS. INSULATING MATERIALS SHALL CONFORM TO THE APPLICABLE SECTIONS OF UL 746 AND UL 94. CABINET SHALL BE UL, CON EDISON AND N.Y.C. ADVISORY BOARD APPROVED.
- THE CABINET IS INTENDED FOR CABLE ENTRY THROUGH BOTTOM AND EXIT THROUGH THE TOP ONLY..
- THE SHORT CIRCUIT CAPABILITY OF THE CABINET ASSEMBLY SHALL BE RATED AT 200,000 RMS SYMMETRICAL AMPERES WITH CLASS "J" FUSES.
- THE FUSED POWER CIRCUIT DEVICE REQUIRES 400AMP, 480V MAX., CLASS "J" FUSES (NOT PROVIDED).
- INSULATED SLEEVING SHALL BE PROVIDED WHERE MULTICONDUCTOR BUNDLE PASSES UNDER NEUTRAL BAR. WIRE MOUNTS ARE RIVETED IN PLACE.
- THE UNIT IS MARKED "SUITABLE FOR USE AS SERVICE EQUIPMENT"..
- USE ONLY MANUFACTURER'S APPROVED LUG PROVIDED. EACH LUG IS RATED FOR (1) 600 MCM-#4 OR (2) 250MCM-#4 CABLE.
- ONLY FACTORY PREFABRICATED KNOCKOUTS ON THE ENCLOSURE SHALL BE USED.**
- PROVIDE PREWIRED TRANS "S" UNIT WITH #12 AWG STRANDED (19/25) THHN COPPER COLOR CODED WIRE FROM THE TEST SWITCH TO THE SOCKET ASSEMBLY AND FROM THE TEST SWITCH TO THE METERING COMPARTMENT INTO C.T. COMPARTMENT. LEAVE 7 FT. OF WIRE FOR FUTURE CONNECTION TO CURRENT TRANSFORMERS. USE EITHER HOOK OR RING TYPE TINNED COPPER LUGS FOR TERMINATIONS. ALL WIRING IN ACCORDANCE WITH CON EDISON MES #751, FOR FORM 9S METER SOCKET.
- NEAREST LIVE PARTS ARE 24" MINIMUM TO FLOOR.
- THE UNIT IS SHIPPED WITH AN "INSULATED NEUTRAL" AND A BOUNDING KIT ("BK8") PROVIDED WITH INSTRUCTIONS (FOR INSTALLATION AS REQUIRED BY CONTRACTOR).
- SECURITY HARDWARE TO BE PROVIDED FOR CT CABINET DOOR AND METER ENCLOSURE (TO BE INSTALLED BY CONTRACTOR).
- 265/460 VOLT SERVICE REQUIRES A DISCONNECT SWITCH BEFORE THE CT CABINET.



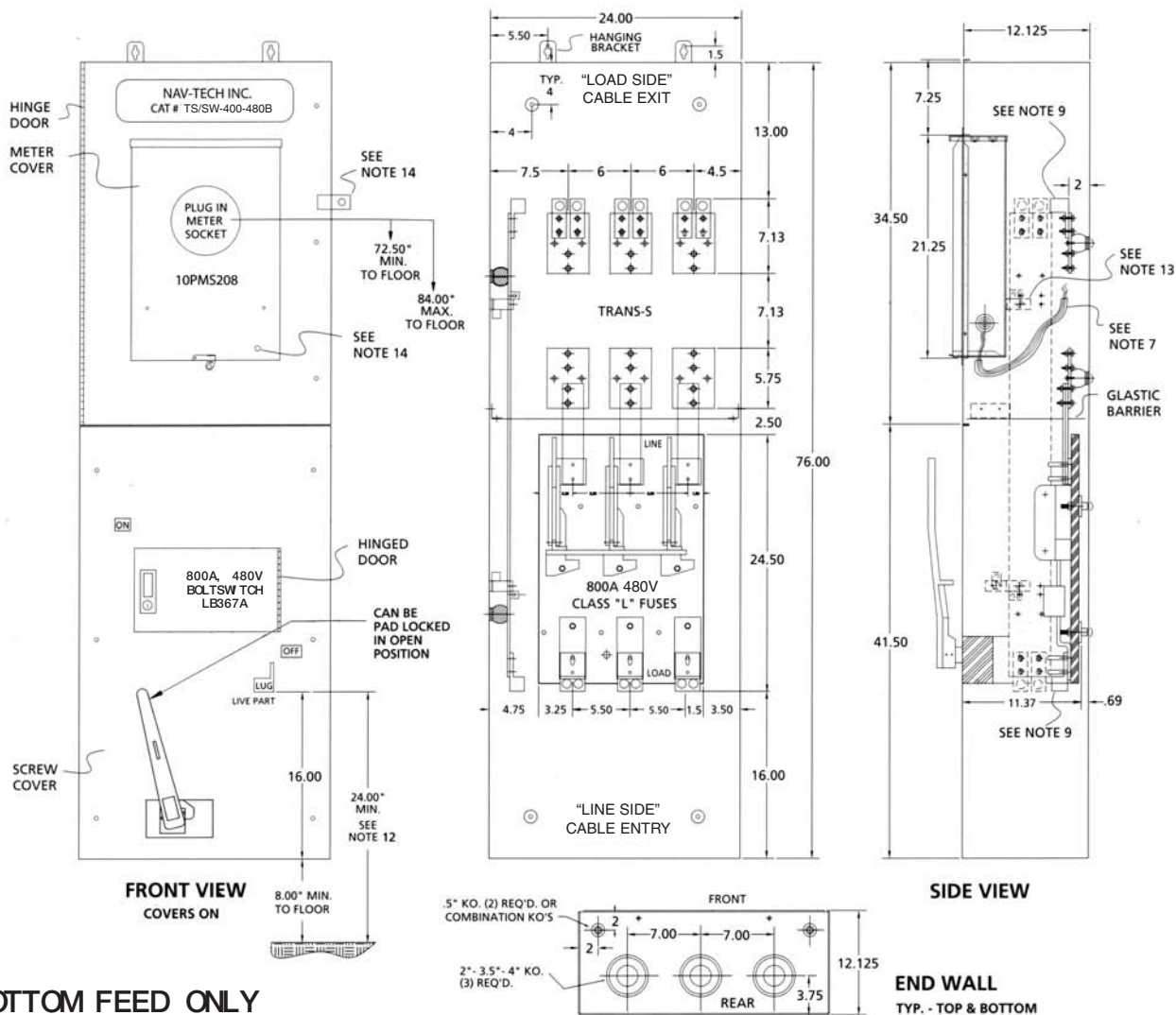
TRANS "S" AND SWITCH COMBINATION
400 AMP., 240 VOLT CON EDISON - LINE TOP
CATALOG NUMBERS: TS/SW-400-480T



- CABINET SHALL BE RATED NEMA I (INDOOR ONLY) AND SHALL BE CONSTRUCTED FROM CODE GAUGE GALVANIZED OR GALVANEALD STEEL.
- BUS BAR SHALL BE SILVER OR TIN PLATED AND SHALL BE SIZED PER THE NEC.
- BUS BAR SHALL BE MOUNTED IN THE CABINET BY MEANS OF STANDOFF INSULATORS OR INSULATED MOUNTING BRACKETS. INSULATING MATERIALS SHALL CONFORM TO THE APPLICABLE SECTIONS OF UL 746 AND UL 94. CABINET SHALL BE UL, CON EDISON AND N.Y.C. ADVISORY BOARD APPROVED.
- THE CABINET IS INTENDED FOR CABLE ENTRY THROUGH BOTTOM AND EXIT THROUGH THE TOP ONLY..
- THE SHORT CIRCUIT CAPABILITY OF THE CABINET ASSEMBLY SHALL BE RATED AT 200,000 RMS SYMMETRICAL AMPERES WITH CLASS "J" FUSES.
- THE FUSED POWER CIRCUIT DEVICE REQUIRES 400AMP, 480V MAX., CLASS "J" FUSES (NOT PROVIDED).
- INSULATED SLEEVING SHALL BE PROVIDED WHERE MULTICONDUCTOR BUNDLE PASSES UNDER NEUTRAL BAR. WIRE MOUNTS ARE RIVETED IN PLACE.
- THE UNIT IS MARKED "SUITABLE FOR USE AS SERVICE EQUIPMENT"..

- USE ONLY MANUFACTURER'S APPROVED LUG PROVIDED. EACH LUG IS RATED FOR (1) 600 MCM-#4 OR (2) 250MCM-#4 CABLE.
- ONLY FACTORY PREFABRICATED KNOCKOUTS ON THE ENCLOSURE SHALL BE USED.**
- PROVIDE PREWIRED TRANS "S" UNIT WITH #12 AWG STRANDED (19/25) THHN COPPER COLOR CODED WIRE FROM THE TEST SWITCH TO THE SOCKET ASSEMBLY AND FROM THE TEST SWITCH TO THE METERING COMPARTMENT INTO C.T. COMPARTMENT. LEAVE 7 FT. OF WIRE FOR FUTURE CONNECTION TO CURRENT TRANSFORMERS. USE EITHER HOOK OR RING TYPE TINNED COPPER LUGS FOR TERMINATIONS. ALL WIRING IN ACCORDANCE WITH CON EDISON MES #751, FOR FORM 9S METER SOCKET.
- NEAREST LIVE PARTS ARE 24" MINIMUM TO FLOOR.
- THE UNIT IS SHIPPED WITH AN "INSULATED NEUTRAL" AND A BOUNDING KIT ("BK8") PROVIDED WITH INSTRUCTIONS (FOR INSTALLATION AS REQUIRED BY CONTRACTOR).
- SECURITY HARDWARE TO BE PROVIDED FOR CT CABINET DOOR AND METER ENCLOSURE (TO BE INSTALLED BY CONTRACTOR).
- 265/460 VOLT SERVICE REQUIRES A DISCONNECT SWITCH BEFORE THE CT CABINET.

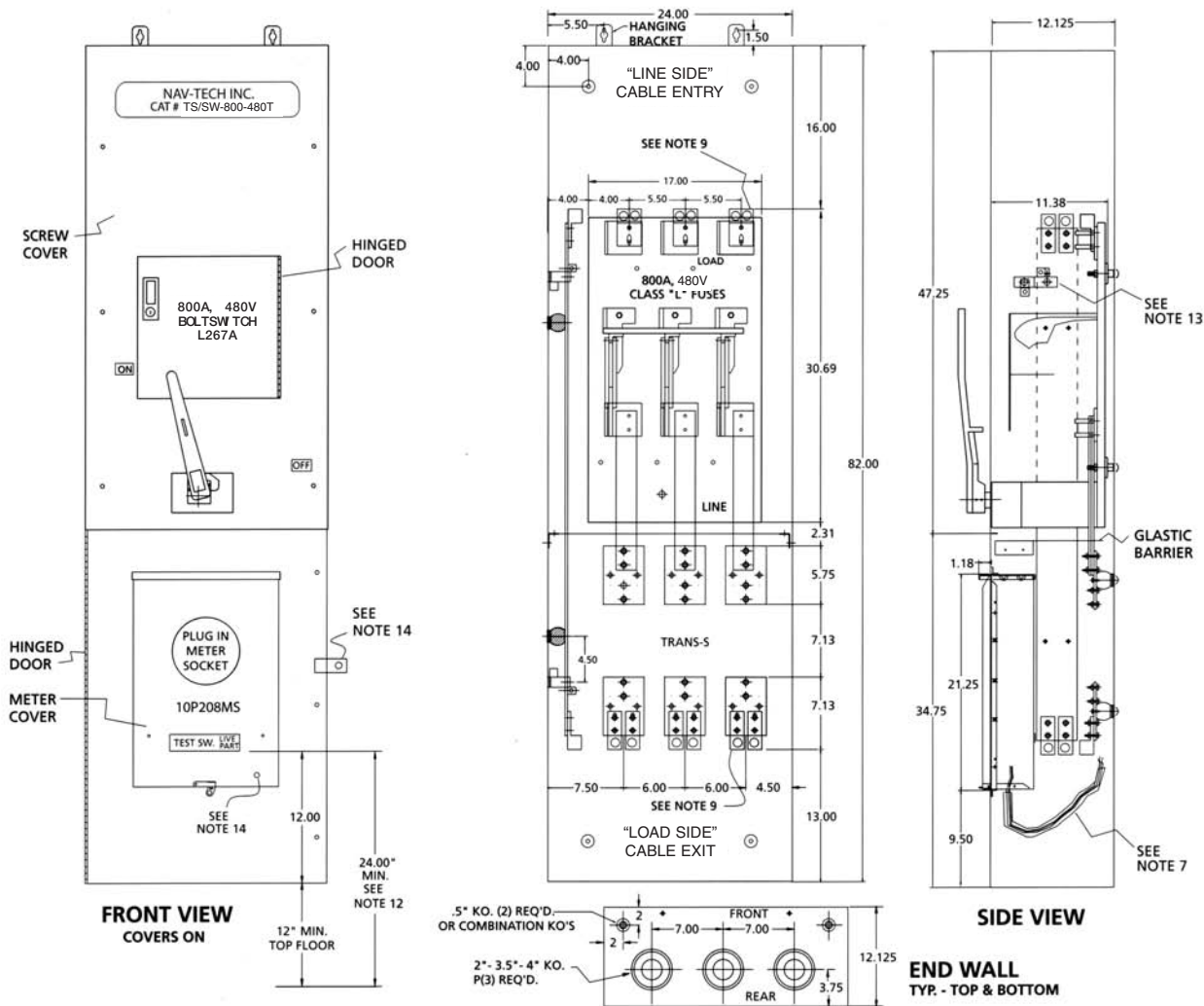
TRANS "S" AND SWITCH COMBINATION
800 AMP., 240 VOLT CON EDISON - LINE BOTTOM
CATALOG NUMBERS: TS/SW-800-480B



BOTTOM FEED ONLY

- CABINET SHALL BE RATED NEMA I (INDOOR ONLY) AND SHALL BE CONSTRUCTED FROM CODE GAUGE GALVANIZED OR GALVANEALD STEEL.
- BUS BAR SHALL BE SILVER OR TIN PLATED AND SHALL BE SIZED PER THE NEC.
- BUS BAR SHALL BE MOUNTED IN THE CABINET BY MEANS OF STANDOFF INSULATORS OR INSULATED MOUNTING BRACKETS. INSULATING MATERIALS SHALL CONFORM TO THE APPLICABLE SECTIONS OF UL 746 AND UL 94. CABINET SHALL BE UL, CON EDISON AND N.Y.C. ADVISORY BOARD APPROVED.
- THE CABINET IS INTENDED FOR CABLE ENTRY THROUGH TOP AND EXIT THROUGH THE BOTTOM ONLY.
- THE SHORT CIRCUIT CAPABILITY OF THE CABINET ASSEMBLY SHALL BE RATED AT 200,000 RMS SYMMETRICAL AMPERES WITH CLASS "L" FUSES.
- THE FUSED POWER CIRCUIT DEVICE REQUIRES 800AMP, 480V MAX., CLASS "L" FUSES (NOT PROVIDED).
- INSULATED SLEEVING SHALL BE PROVIDED WHERE MULTICONDUCTOR BUNDLE PASSES UNDER NEUTRAL BAR. WIRE MOUNTS ARE RIVETED IN PLACE.
- THE UNIT IS MARKED "SUITABLE FOR USE AS SERVICE EQUIPMENT"..
- USE ONLY MANUFACTURER'S APPROVED LUG PROVIDED. EACH SINGLE LUG IS RATED FOR (1) 600 MCM-#4 OR (2) 250MCM-#4 CABLE. EACH DOUBLE LUG ON SWITCH SIDE IS RATED FOR (2) 600MCM-#4 CABLE.
- ONLY FACTORY PREFABRICATED KNOCKOUTS ON THE ENCLOSURE SHALL BE USED.**
- PROVIDE PREWIRED TRANS "S" UNIT WITH #12 AWG STRANDED (19/25) THHN COPPER COLOR CODED WIRE FROM THE TEST SWITCH TO THE SOCKET ASSEMBLY AND FROM THE TEST SWITCH TO THE METERING COMPARTMENT INTO C.T. COMPARTMENT. LEAVE 7 FT. OF WIRE FOR FUTURE CONNECTION TO CURRENT TRANSFORMERS. USE EITHER HOOK OR RING TYPE TINNED COPPER LUGS FOR TERMINATIONS. ALL WIRING IN ACCORDANCE WITH CON EDISON MES #751, FOR FORM 9S METER SOCKET.
- NEAREST LIVE PARTS ARE 24" MINIMUM TO FLOOR.
- THE UNIT IS SHIPPED WITH AN "INSULATED NEUTRAL" AND A BOUNDING KIT ("BK8") PROVIDED WITH INSTRUCTIONS (FOR INSTALLATION AS REQUIRED BY CONTRACTOR).
- SECURITY HARDWARE TO BE PROVIDED FOR CT CABINET DOOR AND METER ENCLOSURE (TO BE INSTALLED BY CONTRACTOR).
- 265/460 VOLT SERVICE REQUIRES A DISCONNECT SWITCH BEFORE THE CT CABINET.

TRANS "S" AND SWITCH COMBINATION
800 AMP., 240 VOLT CON EDISON - LINE TOP
CATALOG NUMBERS: TS/SW-800-480T



TOP FEED ONLY

- CABINET SHALL BE RATED NEMA I (INDOOR ONLY) AND SHALL BE CONSTRUCTED FROM CODE GAUGE GALVANIZED OR GALVANEAL STEEL.
- BUS BAR SHALL BE SILVER OR TIN PLATED AND SHALL BE SIZED PER THE NEC.
- BUS BAR SHALL BE MOUNTED IN THE CABINET BY MEANS OF STANDOFF INSULATORS OR INSULATED MOUNTING BRACKETS. INSULATING MATERIALS SHALL CONFORM TO THE APPLICABLE SECTIONS OF UL 746 AND UL 94. CABINET SHALL BE UL, CON EDISON AND N.Y.C. ADVISORY BOARD APPROVED.
- THE CABINET IS INTENDED FOR CABLE ENTRY THROUGH BOTTOM AND EXIT THROUGH THE TOP ONLY..
- THE SHORT CIRCUIT CAPABILITY OF THE CABINET ASSEMBLY SHALL BE RATED AT 200,000 RMS SYMMETRICAL AMPERES WITH CLASS "L" FUSES.
- THE FUSED POWER CIRCUIT DEVICE REQUIRES 800AMP, 480V MAX., CLASS "L" FUSES (NOT PROVIDED).
- INSULATED SLEEVING SHALL BE PROVIDED WHERE MULTICONDUCTOR BUNDLE PASSES UNDER NEUTRAL BAR. WIRE MOUNTS ARE RIVETED IN PLACE.
- THE UNIT IS MARKED "SUITABLE FOR USE AS SERVICE EQUIPMENT"..
- USE ONLY MANUFACTURER'S APPROVED LUG PROVIDED. EACH SINGLE LUG IS RATED FOR (1) 600 MCM-#4 OR (2) 250MCM-#4 CABLE. EACH DOUBLE LUG ON SWITCH SIDE IS RATED FOR (2) 600MCM-#4 CABLE.
- ONLY FACTORY PREFABRICATED KNOCKOUTS ON THE ENCLOSURE SHALL BE USED.**
- PROVIDE PREWIRED TRANS "S" UNIT WITH #12 AWG STRANDED (19/25) THHN COPPER COLOR CODED WIRE FROM THE TEST SWITCH TO THE SOCKET ASSEMBLY AND FROM THE TEST SWITCH TO THE METERING COMPARTMENT INTO C.T. COMPARTMENT. LEAVE 7 FT. OF WIRE FOR FUTURE CONNECTION TO CURRENT TRANSFORMERS. USE EITHER HOOK OR RING TYPE TINNED COPPER LUGS FOR TERMINATIONS. ALL WIRING IN ACCORDANCE WITH CON EDISON MES #751, FOR FORM 9S METER SOCKET.
- NEAREST LIVE PARTS ARE 24" MINIMUM TO FLOOR.
- THE UNIT IS SHIPPED WITH AN "INSULATED NEUTRAL" AND A BOUNDING KIT ("BK8") PROVIDED WITH INSTRUCTIONS (FOR INSTALLATION AS REQUIRED BY CONTRACTOR).
- SECURITY HARDWARE TO BE PROVIDED FOR CT CABINET DOOR AND METER ENCLOSURE (TO BE INSTALLED BY CONTRACTOR).
- 265/460 VOLT SERVICE REQUIRES A DISCONNECT SWITCH BEFORE THE CT CABINET.

NAV-TECH

CON EDISON APPROVED METER SOCKETS



Item	Description	List Price
MS1G-100	125 Amps 100 continuous single phase 5 JAW	\$50.00

New Products Coming in 2010!



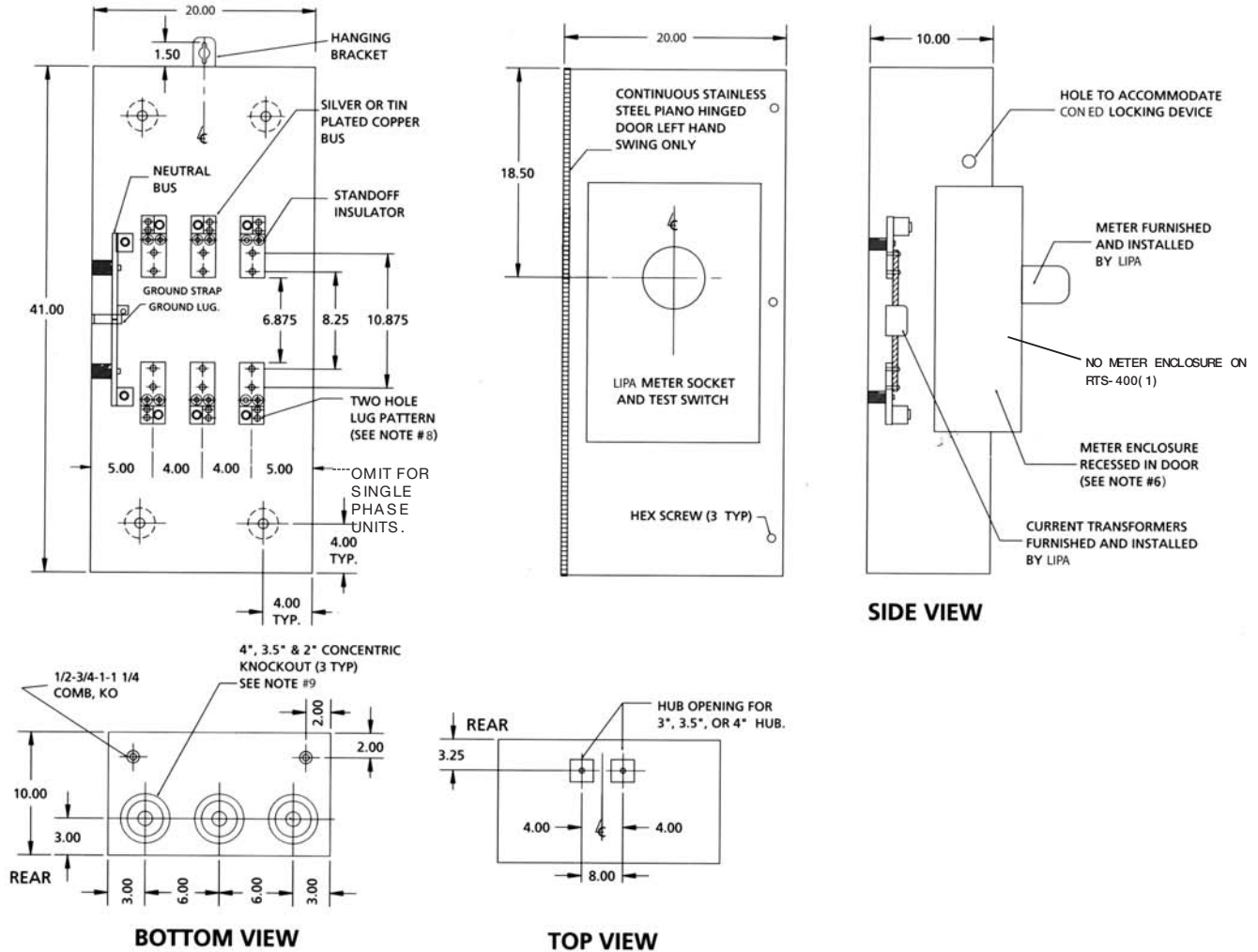
Phone: (718) 272-4222 • Fax: (718) 272-4226
NAV-TECH • New York • www.navtechny.com

LIPA / KEYSpan EQUIPMENT



LIPA Spec.	Navtech Cat. No	Size Description	Amps	Volts	List Price
TRANS-S	TS-400-208(1)	41x20x10	400	600	\$1,540.00
TRANS-S	TS-400-208(3)	41x20x10	400	600	1,710.00
TRANS-S	TS-400-208 SS	41x20x10	400	600	4,250.00
TRANS-S	TS-800-208(1)	48x24x10	800	600	1,880.00
TRANS-S	TS-800-208(3)	48x24x10	800	600	2,200.00
TRANS-S	TS-800-208 SS	48x24x10	800	600	5,500.00
6J-7PTS	MS7PTS	7 PT. METER SOCKET	30 AMP (CONT)	240	570.00
13J-10PTS	MS10PTS	10 PT. METER SOCKET	30 AMP (CONT)	240	620.00
TRANS-S & REMOTE	RTS-400(1)	41x20x10	400	600	940.00
TRANS-S & REMOTE	RTS-400(3)	41x20x10	400	600	1,050.00
TRANS-S & REMOTE	RTS-800(1)	48x24x10	800	600	1,880.00
TRANS-S & REMOTE	RTS-800(3)	48x24x10	800	600	2,110.00

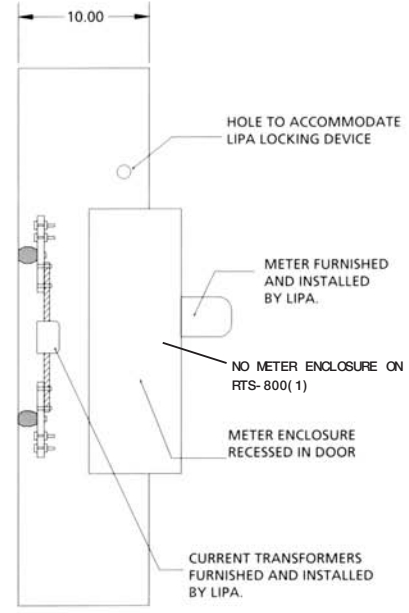
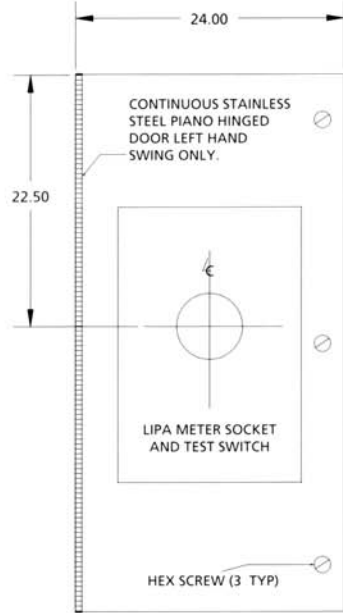
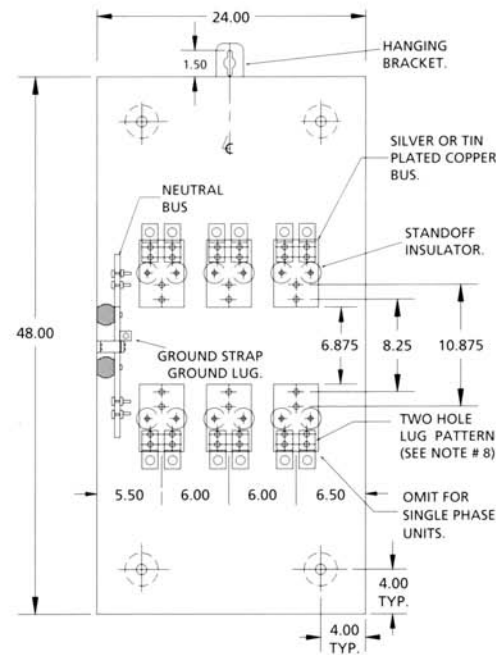
LIPA 400 AMP TRANS "S"
CURRENT TRANSFORMER CABINET (NEMA 3R)
200 AMP. & 400 AMP. 600V AC RATED
CATALOG NUMBER TS-400-208(1) TS-400-208(3)
RTS-400(1) RTS-400(3)



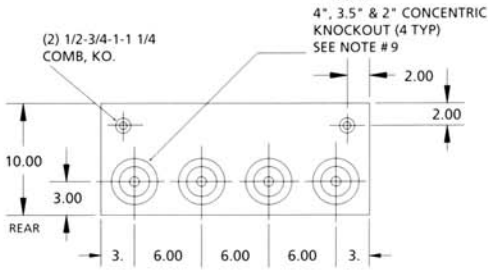
- CABINET SHALL BE RATED NEMA 3R AND SHALL BE CONSTRUCTED FROM CODE GAUGE GALVANIZED OR GALVANNEALED STEEL.
- BUS BAR SHALL BE SILVER OR TIN PLATED AND SHALL BE SIZED PER THE NEC.
- BUS BAR SHALL BE MOUNTED IN THE CABINET BY MEANS OF STANDOFF INSULATORS OR INSULATED MOUNTING BRACKETS. INSULATING MATERIAL SHALL CONFORM TO THE APPLICABLE SECTIONS OF UL 746 AND UL 94. CABINET SHALL BE UL APPROVED.
- THE RIGHT HAND SIDE OF THE CABINET SHALL ALLOW FOR LINE AND LOAD CABLES TO ENTER AND EXIT THROUGH THEN TOP OR THE BOTTOM OF THE CABINET. THIS SPACE SHALL ALLOW FOR THE CABLES TO MEET THE MINIMUM BENDING RADIUS TO NEAREST PHASE OR NEUTRAL BUS AS PER THE NEC.
- THE SHORT CIRCUIT WITHSTAND CAPABILITY OF THE CABINET ASSEMBLY SHALL BE A MAXIMUM OF 50,000 RMS SYMMETRICAL AMPERES.
- CABINET DESIGN SHALL HAVE PROVISIONS FOR A SOLID DOOR TO ALLOW FOR THE METER ENCLOSURE TO BE MOUNTED REMOTELY FROM THE CABINET.
- MANUFACTURER SHALL FURNISH AND INSTALL $\frac{1}{2}$ -13 STUDS WITH SPLIT LOCK WASHERS AND HEX NUTS FOR CT MOUNTING.
- USE ONLY MANUFACTURER'S APPROVED LUG PROVIDED. EACH LUG IS RATED FOR (1) 600MCM-#4 OR (2) 250MCM-#4 CABLES:
- ONLY FACTORY PREFABRICATED KNOCKOUTS ON THE ENCLOSURE SHALL BE USED.**
- PROVIDE PREWIRED TRANS "S" UNIT IN ACCORD WITH LIPA CONSTRUCTION STANDARD: #8908A FOR SINGLE PHASE, 3 WIRE FORM 4S, OR CONSTRUCTION STANDARD #8509A FOR 3 PHASE, 4 WIRE WYE FORM 9S METER SOCKET.



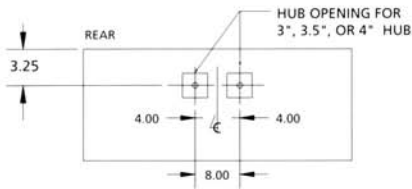
LIPA 800 AMP TRANS "S"
CURRENT TRANSFORMER CABINET (NEMA 3R)
400 AMP. 600 AMP. & 800 AMP., 600V
CATALOG NUMBER TS-800-208(1) TS-800-208(3)
RTS-800(1) RTS-800(3)



SIDE VIEW



BOTTOM VIEW



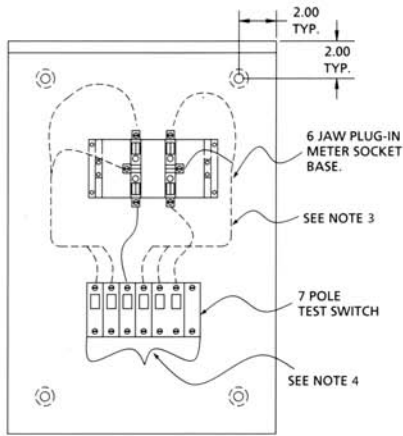
TOP VIEW

- CABINET SHALL BE RATED NEMA 3R AND SHALL BE CONSTRUCTED FROM CODE GAUGE GALVANIZED OR GALVANNEALED STEEL.
- BUS BAR SHALL BE SILVER OR TIN PLATED AND SHALL BE SIZED PER THE NEC.
- BUS BAR SHALL BE MOUNTED IN THE CABINET BY MEANS OF STANDOFF INSULATORS OR INSULATED MOUNTING BRACKETS. INSULATING MATERIAL SHALL CONFORM TO THE APPLICABLE SECTIONS OF UL 746 AND UL 94. CABINET SHALL BE UL APPROVED.
- THE RIGHT HAND SIDE OF THE CABINET SHALL ALLOW FOR LINE AND LOAD CABLES TO ENTER AND EXIT THROUGH THE BOTTOM OF THE CABINET. THIS SPACE SHALL ALLOW FOR THE CABLES TO MEET THE MINIMUM BENDING RADIUS TO NEAREST PHASE OR NEUTRAL BUS AS PER THE NEC.
- THE SHORT CIRCUIT WITHSTAND CAPABILITY OF THE CABINET ASSEMBLY SHALL BE A MAXIMUM OF 50,000 RMS SYMMETRICAL AMPERES.
- CABINET DESIGN SHALL HAVE PROVISIONS FOR A SOLID DOOR TO ALLOW FOR THE METER ENCLOSURE TO BE MOUNTED REMOTELY FROM THE CABINET.
- MANUFACTURER SHALL FURNISH AND INSTALL 1/2-13 STUDS WITH SPLIT LOCK WASHERS AND HEX NUTS FOR CT MOUNTING.
- USE ONLY MANUFACTURER'S APPROVED LUG PROVIDED. 2 LUGS/PER TERMINAL, EACH RATED FOR (1) 600 MCM-#4 OR (2) 250 MCM-#4 CABLE.
- ONLY FACTORY PREFABRICATED KNOCKOUTS ON THE ENCLOSURE SHALL BE USED.**
- PROVIDE PREWIRED TRANS "S" UNIT IN ACCORD WITH LIPA CONSTRUCTION STANDARD: #8908A FOR SINGLE PHASE, 3 WIRE FORM 4S, OR CONSTRUCTION STANDARD #8509A FOR 3 PHASE, 4 WIRE WYE FORM 9S METER SOCKET.

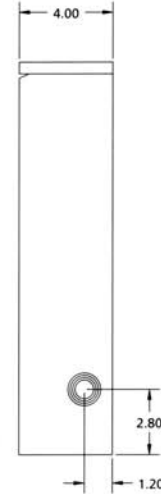
**LIPA METER SOCKET AND TEST SWITCH
(1 AND 3 PHASE)
30 AMP. CONT., 240V AC RATED (NEMA 3R)**



SINGLE PHASE

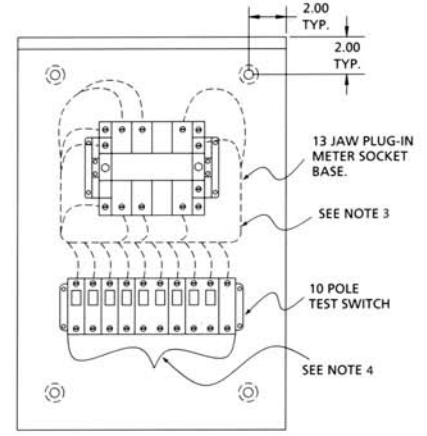


**FRONT VIEW NO COVER
MS7P-TS**

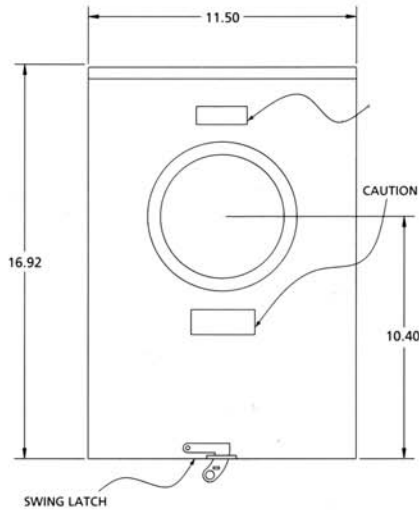


SIDE VIEW

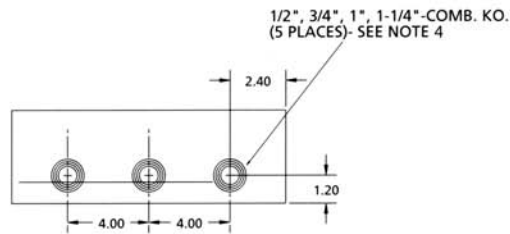
THREE PHASE



**FRONT VIEW NO COVER
MS10P-TS**



TYPICAL FRONT VIEW



TYPICAL BOTTOM VIEW

**CATALOG NUMBERS
MS10P-TS
MS7P-TS**

1. CABINET SHALL BE RATED NEMA 3R AND SHALL BE CONSTRUCTED FROM CODE GAUGE GALVANIZED OR GALVANNEALED STEEL.
2. **ONLY FACTORY PREFABRICATED KNOCKOUTS ON THE ENCLOSURE SHALL BE USED.**
3. STANDARD #8909A FOR 1 PHASE 3 WIRE FORM 45 METER SOCKET, AND STANDARD #8509A FOR 3 PHASE 4 WIRE WYE FORM 9S METER SOCKET, IS PROVIDED PREWIRED FROM TEST SWITCH TO METER BASE IN ACCORD WITH LIPA CONSTRUCTION.
4. WIRE PROVIDED AND INSTALLED BY CONTRACTOR.



ORANGE & ROCKLAND EQUIPMENT

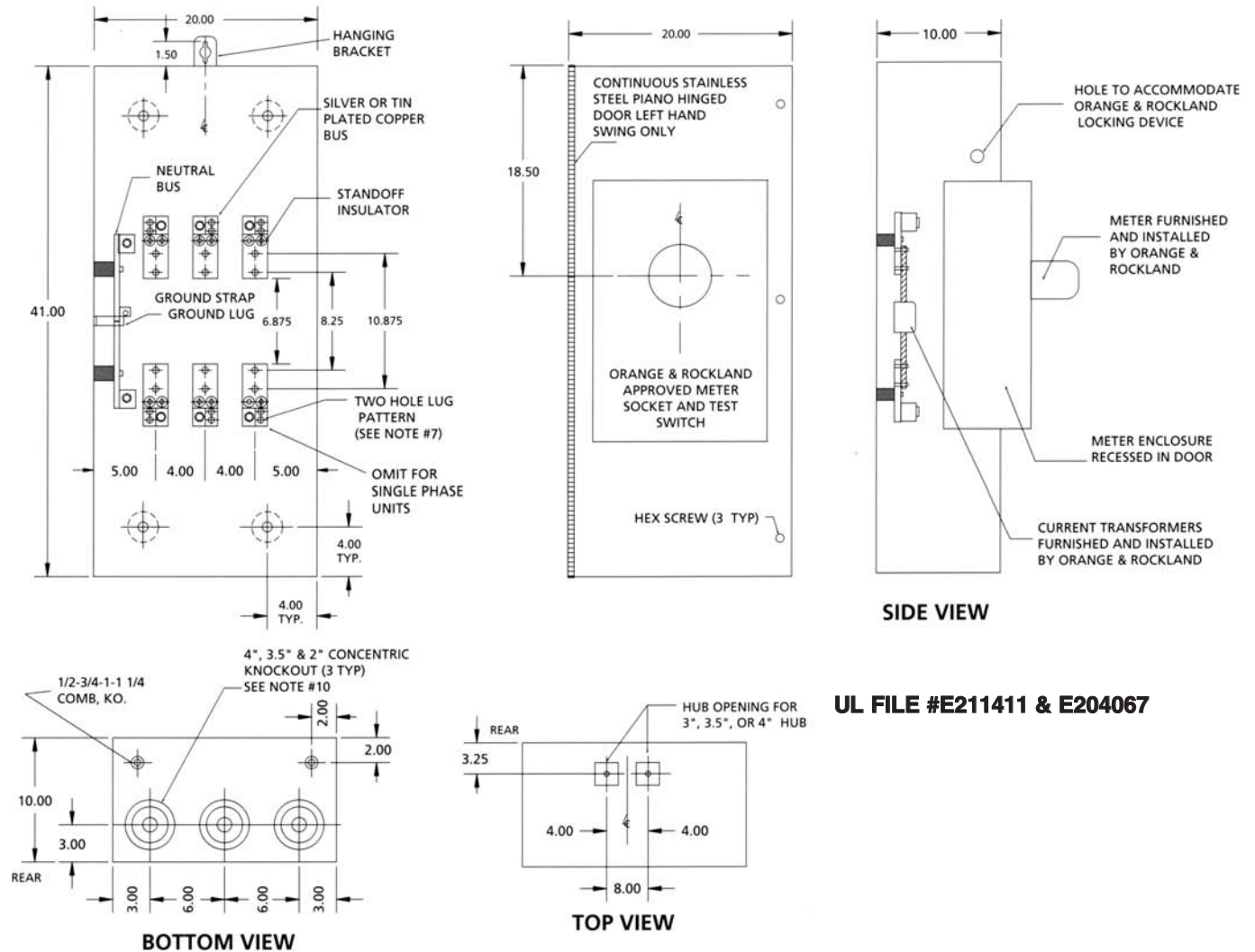


O & R Spec.	Navtech Cat. No	Size Description	Volts	Amps	List Price
TRANS-S	TS-400-208(1)OR	41x20x10	240	400	\$1,670.00
TRANS-S	TS-400-208(3)OR	41x20x10	240	400	1,830.00
TRANS-S	TS-800-208(1)OR	48x24x10	240	800	1,990.00
TRANS-S	TS-800-208(3)OR	48x24x10	240	800	2,260.00
	MS7POR	7 PT. METER SOCKET		30 AMP (CONT)	620.00
	MS10POR	10 PT. METER SOCKET		30 AMP (CONT)	660.00

**ORANGE & ROCKLAND 400 AMP TRANS-"S"
CURRENT TRANSFORMER CABINET (NEMA 3R)**

200 AMP., 400 AMP., 240V AC RATED

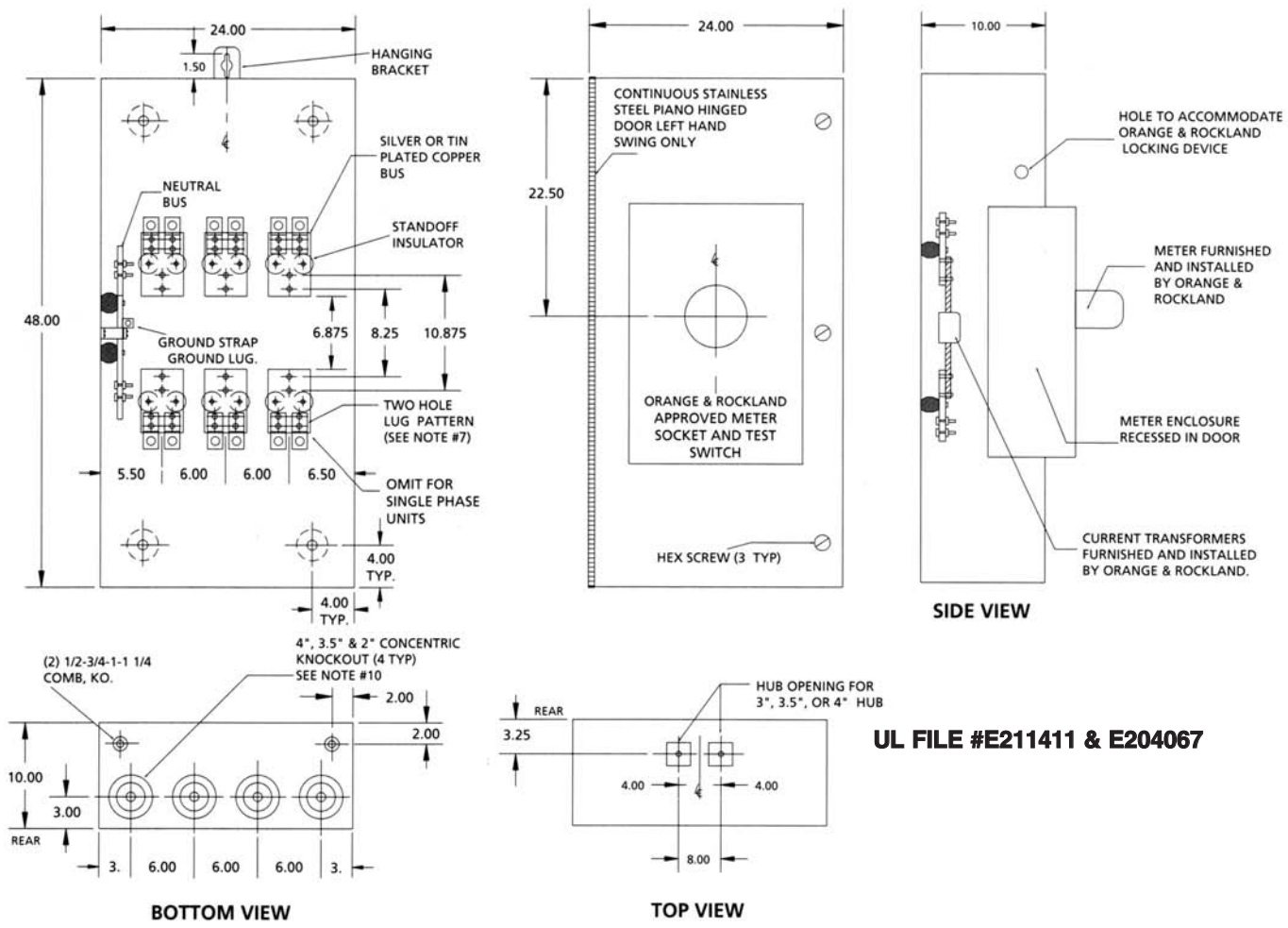
**CATALOG NUMBERS: TS-400-208 (1) O&R
TS-400-208 (3) O&R**



UL FILE #E211411 & E204067

- CABINET SHALL BE RATED NEMA 3R AND SHALL BE CONSTRUCTED FROM CODE GAUGE GALVANIZED OR GALVANNEALED STEEL.
- BUS BAR SHALL BE MOUNTED IN THE CABINET BY MEANS OF STANDOFF INSULATORS OR INSULATED MOUNTING BRACKETS. INSULATING MATERIAL SHALL CONFORM TO THE APPLICABLE SECTIONS OF UL 746 AND UL 94. THE CABINET SHALL BE UL APPROVED.
- BUS BAR SHALL BE SILVER OR TIN PLATED AND SHALL BE SIZED PER NEC.
- THE RIGHT SIDE OF THE CABINET SHALL ALLOW THE LINE AND THE LOAD CABLE TO ENTER AND EXIT THROUGH THE TOP OR BOTTOM OF THE CABINET. THIS SPACE SHALL ALLOW FOR THE CABLES TO MEET THE MINIMUM BENDING RADIUS TO THE NEAREST PHASE OR NEUTRAL BUS AS PER NEC.
- THE SHORT WITHSTAND CAPABILITY OF THE CABINET ASSEMBLY SHALL BE RATED AT 50,000 RMS SYMMETRICAL AMPERES.
- MANUFACTURER SHALL FURNISH AND INSTALL _ 13 STUDS WITH SPLIT LOCK WASHERS AND HEX NUTS FOR CT MOUNTING.
- USE ONLY MANUFACTURE'S APPROVED LUG PROVIDED. EACH LUG IS RATED FOR (1) 600 MCM-#44 OR (2) 250 MCM-#4 CABLES.
- ONLY FACTORY PREFABRICATED KNOCKOUTS ON THE ENCLOSURE SHALL BE USED.**
- PROVIDED PREWIRED TRANS "S" UNIT IN ACCORD WITH ORANGE & ROCKLAND SPECIFICATIONS. CONTACT YOUR LOCAL NEW BUSINESS GROUP FOR INSTALLATION.
- THESE DEVICES MAY BE UTILIZED ON 240 VOLT SERVICES AND 4 WIRE DELTA SERVICES ONLY.
- USE #10 THHN STRANDED WIRE COLOR CODED. ALL WIRING IN ACCORDANCE WITH O&R SPECIFICATIONS.
- ALL METER FORMS MUST CONFORM TO ORANGE & ROCKLAND SPEC. AND WILL BE LABELED AS SUCH.
- ALL CABINETS WILL BE PROVIDED WITH A HOOK TO BE USED AS A DOOR STOP.
- EACH UNIT WILL BE PROVIDED WITH A BARREL LOCK GUARD AND LOCK NUT.

**ORANGE & ROCKLAND 800 AMP TRANS-"S"
CURRENT TRANSFORMER CABINET (NEMA 3R)
600 AMP., 800 AMP., 240V AC RATED
CATALOG NUMBERS: TS-800-208 (1) O&R
TS-800-208 (3) O&R**



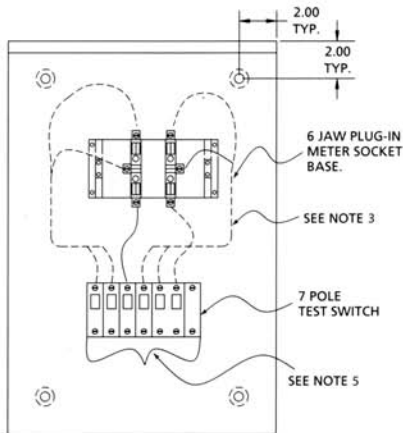
UL FILE #E211411 & E204067

- CABINET SHALL BE RATED NEMA 3R AND SHALL BE CONSTRUCTED FROM CODED GAUGE GALVANIZED OR GALVANNEALED STEEL.
- BUS BAR SHALL BE SILVER OR TIN PLATED AND SHALL BE SIZED PER NEC.
- BUS BAR SHALL BE MOUNTED IN THE CABINET BY THE MEANS OF STANDOFF INSULATORS OR INSULATED MOUNTING BRACKETS. INSULATING MATERIAL SHALL CONFORM TO THE APPLICABLE SECTIONS OF UL 746 AND UL 94. THE CABINET SHALL BE UL APPROVED.
- THE RIGHT HAND SIDE OF THE CABINET SHALL ALLOW FOR THE LINE AND THE LOAD CABLES TO ENTER AND EXIT THROUGH THE BOTTOM OF THE CABINET. THIS SPACE SHALL ALLOW FOR THE CABLES TO MEET THE MINIMUM BENDING RADIUS TO THE NEAREST BUS AS PER NEC.
- THE SHORT CIRCUIT WITHSTAND CAPABILITY OF THE CABINET ASSEMBLY SHALL BE RATED AT 50,000 RMS SYMMETRICAL AMPERES.
- MANUFACTURER SHALL FURNISH AND INSTALL _ - 13 STUDS WITH SPLIT LOCK WASHERS AND HEX NUTS FOR CT MOUNTING.
- USE ONLY MANUFACTURER'S APPROVED LUG PROVIDED. TWO LUGS PER TERMINAL, EACH RATED FOR (1) 600 MCM-#4 OR (2) 250 MCM -#4 CABLE.
- ONLY FACTORY PREFABRICATED KNOCKOUTS ON THE ENCLOSURE SHALL BE USED.**
- PROVIDED PREWIRED TRANS "S" UNIT IN ACCORD WITH ORANGE & ROCKLAND SPECIFICATIONS. CONTACT YOUR LOCAL NEW BUSINESS GROUP FOR INSTALLATION.
- THESE DEVICES MAY BE UTILIZED ON 240 VOLT SERVICES AND 4 WIRE DELTA SERVICES ONLY.
- USE #10 THHN STRANDED WIRE COLOR CODED. ALL WIRING IN ACCORDANCE WITH O&R SPECIFICATIONS.
- ALL METER FORMS MUST CONFORM TO ORANGE & ROCKLAND SPEC. AND WILL BE LABELED AS SUCH.
- ALL CABINETS WILL BE PROVIDED WITH A HOOK TO BE USED AS A DOOR STOP.
- EACH UNIT WILL BE PROVIDED WITH A BARREL LOCK GUARD AND LOCK NUT.

**ORANGE & ROCKLAND METER SOCKET
AND TEST SWITCH (1 AND 3 PHASE)
30 AMP. CONT., 240V AC RATED (NEMA 3R)**

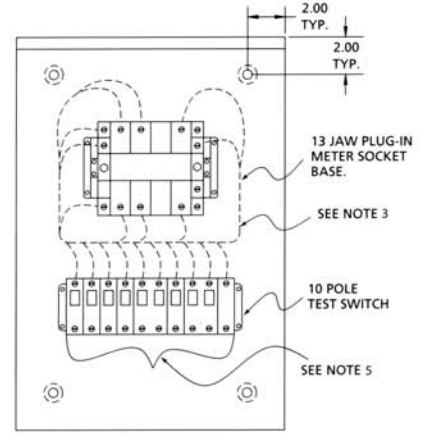


SINGLE PHASE

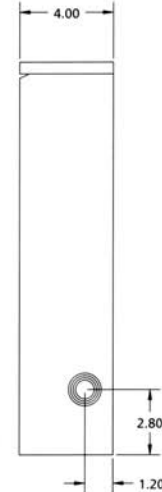


**FRONT VIEW NO COVER
MS 7P - OR**

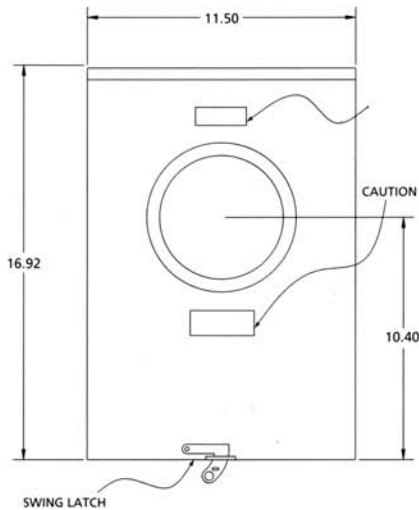
THREE PHASE



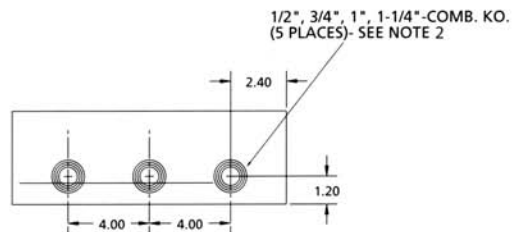
**FRONT VIEW NO COVER
MS 10P - OR**



SIDE VIEW



TYPICAL FRONT VIEW



TYPICAL BOTTOM VIEW

**CATALOG NUMBERS
MS10P-OR
MS7P-OR**



1. CABINET SHALL BE RATED NEMA 3R AND SHALL BE CONSTRUCTED FROM CODE GAUGE GALVANIZED OR GALVANNEALED STEEL.
2. **ONLY FACTORY PREFABRICATED KNOCKOUTS ON THE ENCLOSURE SHALL BE USED.**
3. PREWIRED TEST SWITCH METER SOCKET TO ORANGE & ROCKLAND SPECIFICATIONS
4. THESE DEVICES TO BE USED ON 240 VOLT SERVICES AND 4 WIRE DELTA SERVICES ONLY
5. WIRE PROVIDED AND INSTALLED BY CONTRACTOR.



SCREW COVER BOXES



Size	Price	Size	Price
6x6x3	\$4.46	8" DEEP	
4" DEEP		10x10x8	\$44.00
6x6x4*	7.96	12x12x8	38.02
8x6x4*	5.41	18x15x8	65.62
8x8x4*	10.94	18x18x8	65.62
10x10x4*	13.50	24x12x8	86.00
12x8x4	14.00	24x18x8	90.00
12x12x4*	16.12	24x24x8	98.86
18x12x4	44.94	30x24x8	72.09
18x15x4	48.00	30x30x8	210.82
18x18x4*	35.88	36x36x8	260.00
24x18x4	70.00	10" DEEP	
24x24x4*	95.70	12x12x10	58.00
6" DEEP		18x18x10	79.00
6x6x6*	10.44	24x24x10	131.06
8x8x6*	14.30	36x24x10	234.90
10x10x6*	17.42	36x36x10	295.52
12x12x6*	19.56	12" DEEP	
16x16x6	46.68	18x18x12	82.00
18x12x6	37.50	24x24x12	183.90
18x18x6*	41.40	30x24x12	178.00
24x18x6	63.20	30x30x12	232.20
24x24x6*	87.20	36x24x12	270.00
30x24x6	140.00	36x36x12	282.94
30x30x6	178.80	48X48X12	780.00
36x36x6	239.60	18" DEEP	
<ul style="list-style-type: none"> • *Means stocked with and without KO'S • All boxes 8" and above are stocked no KO'S • All boxes ASA61 powder coat finish • All boxes are available galv. no paint - special order 		30X30X18	232.20
		36X36X18	580.26

SCREW COVER WIREWAYS & FITTINGS

2-1/2 x 2-1/2		
Description	Catalog #	Price
Lengt h - 1'	T221	5. 00
Lengt h - 2'	T222	9. 70
Lengt h - 3'	T223	13. 50
Lengt h - 4'	T224	17. 90
Lengt h - 5'	T225	18. 20
Connect or	C2	3. 60
End Wål	EW2	3. 60
Panel Adapt er	PA2	8. 00
El bow- 90	EL2-90	9. 50
El bow- 45	EL2-45	9. 50
Tee	T2	11. 00

8x8		
Description	Catalog #	Price
Lengt h - 1'	T881	24. 56
Lengt h - 2'	T882	37. 40
Lengt h - 3'	T883	56. 32
Lengt h - 4'	T884	73. 38
Lengt h - 5'	T885	79. 10
Connect or	C8	6. 44
End Wål	EW8	6. 44
Panel Adapt er	PA8	19. 76
El bow - 90	EL8-90	28. 56
El bow - 45	EL8-45	28. 56
Tee	T8	62. 46
Cross	CR8	67. 50
CeilingHanger	CH8	15. 20

4x4		
Description	Catalog #	Price
Lengt h - 1.'	T441	8. 42
Lengt h - 2'	T442	13. 88
Lengt h - 3'	T443	20. 94
Lengt h - 4'	T444	24. 82
Lengt h - 5'	T445	27. 26
Connect or	C4	3. 02
End Wål	EW4	3. 42
Panel Adapt er	PA4	9. 38
El bow- 90	EL4-90	24. 72
El bow - 45	EL4-45	25. 96
Tee	T4	29. 88
Cross	CR4	27. 50
CeilingHanger	CH4	6. 50

10x10		
Description	Catalog #	Price
Lengt h - 1'	TI 010-1	38. 14
Lengt h - 2'	TI 010-2	62. 32
Lengt h - 3'	TI 010-3	90. 02
Lengt h - 4'	TI 010-4	119. 14
Lengt h - 5'	TI 010-5	143. 54
Connect or	CI 0	9. 70
End Wål	EW 0	9. 70
Panel Adapt er	PAI 0	25. 70
El bow- 90	ELI 0-90	66. 68
El bow- 45	ELI 0-45	63. 34
Tee	TI 0	77. 06

6x6		
Description	Catalog #	Price
Lengt h - 1'	T661	17. 52
Lengt h - 2'	T662	24. 00
Lengt h - 3'	T663	31. 38
Lengt h - 4'	T664	34. 90
Lengt h - 5'	T665	41. 04
Connect or	C6	4. 82
End Wål	EW6	4. 82
Panel Adapt er	PA6	13. 54
El bow - 90	EL6-90	34. 12
El bow- 45	EL6-45	32. 46
Tee	T6	40. 00
Cross	CR6	38. 00
CeilingHanger	CH6	12. 00

12x12		
Description	Catalog #	Price
Lengt h - 1'	T1212-1	41. 52
Lengt h - 2'	T1212-2	81. 28
Lengt h - 3'	T1212-3	113. 26
Lengt h - 4'	T1212-4	144. 80
Lengt h - 5'	T1212-5	157. 38
Connect or	CI 2	13. 54
End Wål	EW 2	13. 54
Panel Adapt er	PAI 2	40. 64
El bow- 90	EL12-90	86. 92
El bow- 45	EL12-45	86. 92
Tee	T12	110. 12
Cross	CR 2	127. 00

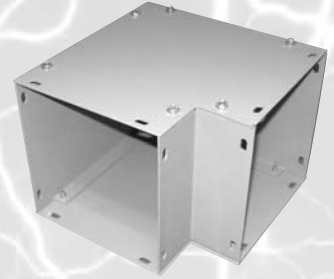
WIREWAY FITTINGS



45° Elbow



End Wall



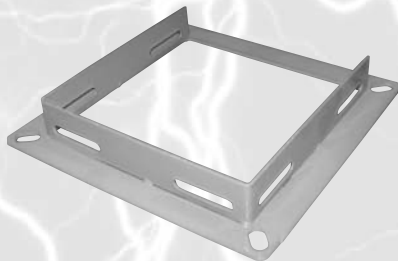
90° Elbow



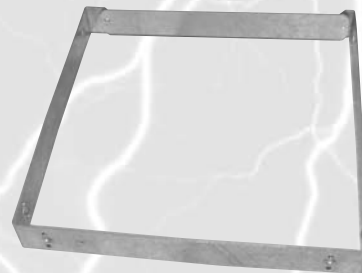
Tee Fitting



Cross Fitting



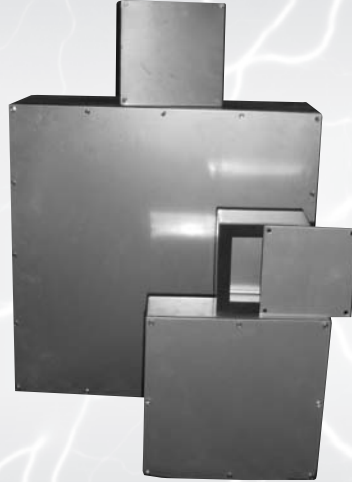
Panel Adapter



Coupling

WEATHERPROOF SCREW COVER BOXES

CAT NO.	Size	List Price
WPSC664	6x6x4	\$39.88
WPSC864	8x6x4	57.88
WPSC884	8x8x4	60.70
WPSC10104	10x10x4	72.52
WPSC12124	12x12x4	86.70
WPSC18184	18x18x4	124.50
WPSC666	6x6x6	57.88
WPSC886	8x8x6	65.58
WPSC10106	10x10x6	80.20
WPSC12126	12x12x6	92.86
WPSC18186	18x18x6	131.02
WPSC24246	24x24x6	236.24
WPSC24248	24x24x8	247.36
WPSC242412	24x24x12	350.00
WPSC303012	30x30x12	450.00
WPSC363612	36x36x1	710.00
WPSC484812	48x48x12	1,000.00



- Galvanized Steel
- Seams continuously welded
- Gasketed covers
- Stainless steel screws available
- Mounting ears
- Powder coat gray finish

RAINTIGHT SCREW COVER BOXES

Size	List Price
6x6x4	\$15.42
8x8x4	20.08
10x10x4	31.90
12x12x4	35.26
8x8x6	21.80
10x10x6	33.86
12x12x6	42.12
18x18x6	83.90
24x24x8	140.00



HINGE COVER BOXES


Size	List Price
6x6x4	\$8.00
8x8x4	10.00
10x10x4	11.50
12x12x4	16.00
18x12x4	25.00
12x12x6	23.00
1 x12x6	26.00
18x18x6	26.00
24x24x8	38.00



FIRE ALARM CUTOUT BOX

CAT NO.	Size	Description	List Price
FAB 864	8x6x4	3P 30 Amp Fuseholder	\$96.00
FAB 884	8x8x4	4P 30 Amp Fuseholder	140.00
RTFAB 884	8x8x4	4P 30 Amp Fuseholder 3R	200.00
FAB 12124	12x12x24	3P 60 Amp Fuseholder	220.00



- Hinge cover box
- Cam Lock with Cat. 45 Key
- Mounted in box
 - a) 3-pole 250 volt fuse holder
 - b) solid removable copper neutral
- Electrostatically applied powder coat red finish
- Other sizes and configurations are available upon request
- All boxes and fuseholders 

RAINTIGHT TROUGH



Size	List Price
44-12	\$25.62
44-24	41.54
44-36	53.94
44-48	66.10
44-60	88.20
66-12	40.82
66-24	56.48
66-36	74.68
66-48	94.10
66-60	112.22
88-12	54.28
88-24	79.82
88-36	104.22
88-48	130.26
88-60	156.86

Size	List Price
44-12	\$48.00
44-24	85.00
44-36	112.00
44-48	132.00
44-60	165.00
66-12	76.00
66-24	114.00
66-36	150.00
66-48	184.00
66-60	216.00
88-12	158.00
88-24	178.00
88-36	210.00
88-48	168.00
88-60	260.00
1212-3	408.00
1212-5	620.00

WEATHERPROOF TROUGH



COVERS ONLY WIREWAY

COVERS ONLY S.C. BOXES

Cat No.	Price	Cat No.	List Price
CO221	\$4.00	CO 6x6	\$5.00
CO222	8.00	CO 8x8	6.00
CO223	11.00	CO 8x6	5.50
CO224	12.00	CO 10x10	7.00
CO225	15.00	CO 12x12	8.00
L2-90	11.00	CO 16x16	19.00
L2-45	11.00	CO 18x12	22.00
T2	15.00	CO 18X15	23.00
CO441	5.00	CO 18X18	23.00
CO442	9.00	CO 24X12	25.00
CO443	11.00	CO 24X18	48.00
CO444	13.00	CO 24x24	54.00
CO445	15.00	CO 30x18	72.00
L4-90	14.00	CO 30x24	79.00
L4-45	14.00	CO 30x30	84.00
T4	18.00	CO 36x24	92.00
CO661	7.00	CO 36x30	102.00
CO662	13.00	CO 36x36	110.00
CO663	16.00	CO 48x36	145.00
CO664	22.00	CO 48x48	186.00
CO665	24.00	CO N-205	30.00
L6-90	18.00	CO N-215	62.00
L6-45	18.00	CO N-484	109.00
T6	26.00	CO RTN-205	36.00
CO881	12.00	CO RTN-215	110.00
CO882	23.00	CO RTN-484	200.00
CO883	29.00	CO WP 6x6	14.00
CO884	35.00	CO WP 8x8	20.00
CO885	42.00	CO WP 10x10	25.00
L8-90	34.00	CO WP 12x12	32.00
L8-45	34.00	CO WP 18x18	44.00
T8	36.00	CO WP 24x24	80.00
CO1010-1	16.00	CO WP 36x36	110.00
CO1010-2	26.00		
CO1010-3	42.00		
CO1010-4	48.00		
CO1010-5	55.00		
L10-90	45.00		
L10-45	45.00		
T10	54.00		
CO1212-1	18.00		
CO1212-2	37.00		
CO1212-3	50.00		
CO1212-4	60.00		
CO1212-4	75.00		
CO 1212-5	42.00		
L12-90	52.00		
L12-45	52.00		



GANG BOXES 1 5/8" deep (1/2" & 3/4" knockouts)



CAT NO.	Length	Cubic Inch Capacity	Knockouts Sides	Knockouts Ends	Knockouts Bottom	List Price
2G 1-5/8	7	46.0	8	4	4 2	\$6.58
3G 1-5/8	8 7/8	58.5	10	4	6 4	8.34
4G 1-5/8	10 5/8	71.0	12	4	6 4	11.62
5G 1-5/8	12 1/2	84.0	14	4	6 4	18.72
6G 1-5/8	14 1/4	95.0	16	4	6 4	32.90
7G 1-5/8	16 1/16	108.5	18	4	6 4	55.20
8G 1-5/8	17 7/8	122.0	20	4	6 4	60.96
9G 1-5/8	19 3/4	133.5	22	4	6 4	82.80

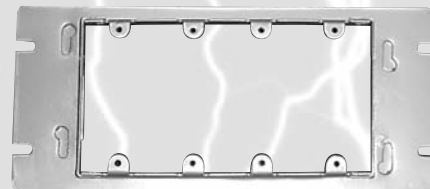
GANG BOXES 2 1/2" deep



AVAILABLE IN BOTH 1/2-3/4 AND 3/4-1 KO CONFIGURATIONS

CAT NO.	Length	Cubic Inch Capacity	Knockouts Sides	Knockouts Ends	Knockouts Bottom	List Price
2G 2-1/2	7	71.0	8	4	4 2	\$8.86
3G 2-1/2	8 7/8	90.5	10	4	6 4	11.38
4G 2-1/2	10 5/8	111.8	12	4	6 4	18.98
5G 2-1/2	12 1/2	128.7	14	4	6 4	32.20
6G 2-1/2	14 1/4	148.2	16	4	6 4	56.36
7G 2-1/2	16 1/16	169.5	18	4	6 4	73.60
8G 2-1/2	17 7/8	188.8	20	4	6 4	92.00
9G 2-1/2	19 3/4	208.8	22	4	6 4	109.26

RAISED COVERS



1/2" RAISED COVERS

Part#	# of Gangs	Cubic Inch	Description	Length Capacity	List Price
2G-1/2	2	8.1	Fits 2 Gang Box	7	\$4.60
3G-1/2	3	11.7	Fits 3 & 2 Gang Box	8-13/16	5.76
4G-1/2	4	14.9	Fits 4 & 3 Gang Box	10-5/8	6.44
5G-1/2	5	17.5	Fits 5 & 4 Gang Box	12-7/16	8.86
6G-1/2	6	20.4	Fits 6 & 5 Gang Box	14-1/4	18.72
7G-1/2	7	24.1	Fits 7 & 6 Gang Box	16-1/16	35.42
8G-1/2	8	26.9	Fits 8 & 7 Gang Box	17-7/8	43.64
9G-1/2	9	31.8	Fits 9 & 8 Gang Box	19-11/16	50.60

3/4" RAISED COVERS

Part#	# of Gangs	Cubic Inch	Description	Length Capacity	List Price
2G-3/4	2	11.2	Fits 2 Gang Box	7	\$4.02
3G-3/4	3	17.1	Fits 3 & 2 Gang Box	8-13/16	4.72
4G-3/4	4	21.6	Fits 4 & 3 Gang Box	10-5/8	6.32
5G-3/4	5	26.2	Fits 5 & 4 Gang Box	12-7/16	8.86
6G-3/4	6	30.5	Fits 6 & 5 Gang Box	14-1/4	13.80
7G-3/4	7	36.1	Fits 7 & 6 Gang Box	16-1/16	24.16
8G-3/4	8	41.3	Fits 8 & 7 Gang Box	17-7/8	33.36
9G-3/4	9	46.3	Fits 9 & 8 Gang Box	19-11/16	42.56

1" RAISED COVERS

Part#	# of Gangs	Cubic Inch	Description	Length Capacity	List Price
2G-1"	2	16.2	Fits 2 Gang Box	7	\$4.00
3G-1"	3	23.4	Fits 3 & 2 Gang Box	8-13/16	5.00
4G-1"	4	29.8	Fits 4 & 3 Gang Box	10-5/8	5.60
5G-1"	5	35.00	Fits 5 & 4 Gang Box	12-7/16	7.70
6G-1"	6	40.8	Fits 6 & 5 Gang Box	14-1/4	18.00
7G-1"	7	48.2	Fits 7 & 6 Gang Box	16-1/16	30.80
8G-1"	8	53.8	Fits 8 & 7 Gang Box	17-7/8	50.00
9G-1"	9	63.2	Fits 9 & 8 Gang Box	19-11/16	54.00

GANG BOX COLLARS (1/2" & 3/4" knockouts)



GANG BOX COLLARS 1 5/8" deep

Part #	Length	Cubic Inch Capacity	Knockouts Sides	Knockouts Ends	List Price
COLL158-2	7	46.0	8	4	\$13.48
COLL158-3	8 7/8	58.5	10	4	15.94
COLL158-4	10 5/8	71.0	12	4	16.34
COLL158-5	12 1/2	84.0	14	4	21.58
COLL158-6	14 1/4	95.0	16	4	37.28
COLL158-7	16 1/16	108.5	18	4	58.92
COLL158-8	17 7/8	122.0	20	4	67.46
COLL158-9	19 3/4	133.5	22	4	80.96

GANG BOX COLLARS 2 1/2" deep

Part #	Length	Cubic Inch Capacity	Knockouts Sides	Knockouts Ends	List Price
COLL212-2	7	71.0	8	4	\$15.94
COLL212-3	8 7/8	90.5	10	4	20.24
COLL212-4	10 5/8	111.82	12	4	22.72
COLL212-5	12 1/2	128.7	14	4	30.54
COLL212-6	14 1/4	148.2	16	4	53.98
COLL212-7	16 1/16	169.5	18	4	69.60
COLL212-8	17 7/8	188.8	20	4	83.80
COLL212-9	19 3/4	208.8	22	4	98.08

FLAT BLANK COVERS

Part#	# of Gangs	Description	Length	List Price
COVFL-2	2	Fits 2 Gang Box	7	\$1.38
COVFL-3	3	Fits 3 Gang Box	8 13/16	2.08
COVFL-4	4	Fits 4 Gang Box	10 5/8	2.82
COVFL-5	5	Fits 5 Gang Box	12 7/16	4.14
COVFL-6	6	Fits 6 Gang Box	14 1/4	8.06
COVFL-7	7	Fits 7 Gang Box	16 1/16	14.96
COVFL-8	8	Fits 8 Gang Box	17 7/8	18.40
COVFL-9	9	Fits 9 Gang Box	19 11/16	20.70



TOGGLE SWITCH COVERS

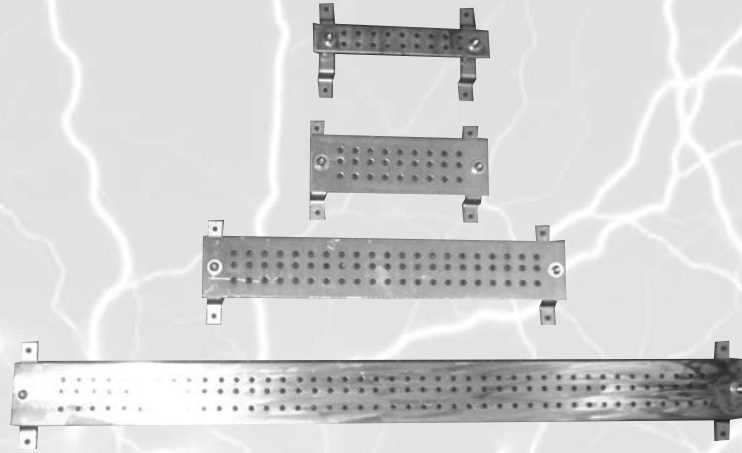
Part#	# of Gangs	Description	Length	List Price
COVTS-2	2	Fits 2 Gang Box	7	\$3.16
COVTS-3	3	Fits 3 Gang Box	8 13/16	4.28
COVTS-4	4	Fits 4 Gang Box	10 5/8	5.82
COVTS-5	5	Fits 5 Gang Box	12 7/16	7.60
COVTS-6	6	Fits 6 Gang Box	14 1/4	8.46
COVTS-7	7	Fits 7 Gang Box	16 1/16	18.98
COVTS-8	8	Fits 8 Gang Box	17 7/8	22.78
COVTS-9	9	Fits 9 Gang Box	19 11/16	27.84



GANG BOX PARTITIONS

Part#	Description	List Price
PART158-SQ	Fits 1 5/8" Deep Gang Box No Rise on Cover-Flat	\$2.50
PART158-12	Fits 1 5/8" Deep Gang Box w/ 1/2" Cover Rise	4.25
PART158-34	Fits 1 5/8" Deep Gang Box w/ 3/4" Cover Rise	4.25
PART212-SQ	Fits 2 1/2" Deep Gang Box No Rise on Cover-Flat	3.00
PART212-12	Fits 2 1/2" Deep Gang Box w/ 1/2" Cover Rise	4.90
PART212-34	Fits 2 1/2" Deep Gang Box w/ 3/4" Cover Rise	5.60

GROUNDING BUSBARS

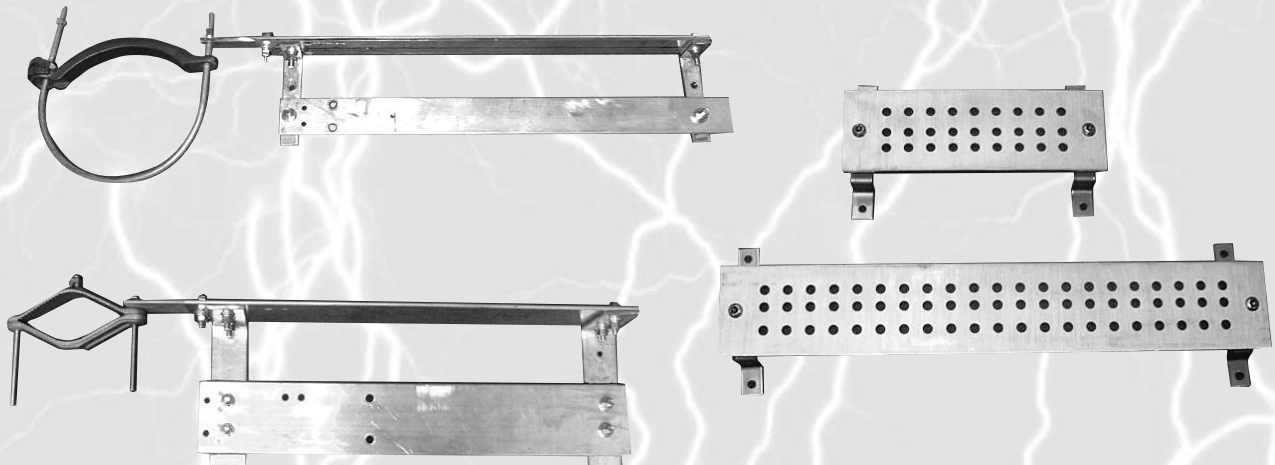


Item	Description	List Price
GB1-12	1" x 12" x 1/4"	\$52.00
GB2-12	2" x 12" x 1/4"	64.00
GB4-12	4" x 12" x 1/4"	84.00
GB4-24	4" x 24" x 1/4"	168.00

Our new Grounding Busbars are insulated ground bus mounting plates. The type 110 alloy solid copper ground bars are 1/4" thick and stand 2-1/2" from the backboard or wall. The 12" accepts 9 lugs and the 24" accepts 21 lugs. Accepting lugs with either 3/4", 1" or 1-3/4" centers. Any lug with 3/8" bolts may be used.

Each BUSBAR consists of:

- | | |
|---------------------------|-------------------------------|
| 1 - Busbar | 4 - (4) Stainless Steel Bolts |
| 2 - (2) Insulators | 5 - (4) Lock Washers |
| 3 - (2) Standoff Brackets | 6 - (4) Flat Washers |



ACCESSORIES

Item	List Price
Barrel Lock Guard	\$12.00
Minute Meter Guard	32.00
Cam Lock Cat 45 Key	16.00
Key Locking Latch	60.00
Padlockable Handle	40.00
1" Hex Glastic Insulators 1/4"	7.00
1-1/4" Hex Glastic Insulators 1/4"	8.00
Round Glastic Insulators 3/8"	10.00
1-1/4" Hub	5.45
1-1/2" Hub	5.45
2" Hub	11.00
3" Hub	27.00
3-1/2" Hub	34.00
4" Hub	38.00
3" Top Cover Plate	15.00
5" Top Cover Plate	20.00



Barrel Lock Guard



Minute Meter Guard



Cam Lock Cat 45 Key



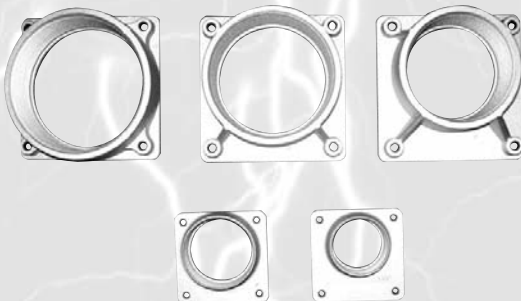
Key Locking Latch



Padlockable Handle



Glastic Insulators



Hubs



Top Cover Plate

- **CON EDISON EQUIPMENT**
- **LIPA/KEYSPAN EQUIPMENT**
- **ORANGE AND ROCKLAND EQUIPMENT**
- **METER SOCKETS**
- **TRANS-S CABINTS**
- **TRANS-A CABINETS**
- **ROUGHHOUSE BOXES**
- **WEATHERPROOF ENCLOSURES**
- **COPPER DETAIL BOXES**
- **CURRENT TRANSFORMER CABINETS**
- **RAINTIGHT ENCLOSURES**
- **SCREW COVER BOXES**
- **WIREWAY**
- **CUSTOM ENCLOSURES**
- **LOW VOLTAGE SWITCHGEAR**

www.NAVTECHNY.com • email: navtechelect@yahoo.com

Phone: (718) 272-4222 • Fax: (718) 272-4226
909 Essex Street Brooklyn, N.Y. 11208

Represented by Warshaw (718) 257-2111