

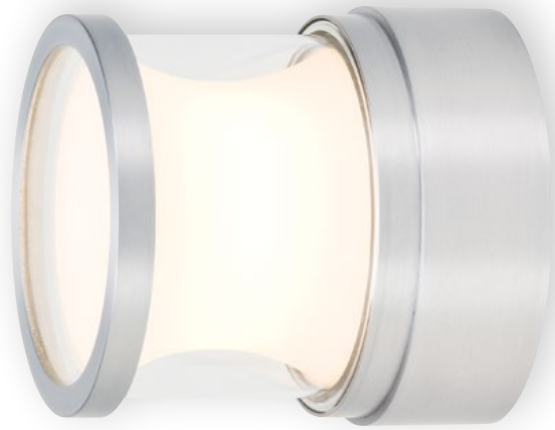


Architectural Lighting

Contemporary
Illumination



Arch	16
Bullet	14
Compass	5
Cube	15
Disc	19
Eclipse Flush	28
Edge	27
Element	24
Entity	2
Gear	20
Gravity	6
LED Pendants	29
Level Wall	26
Orb	18
Sail	21
Silo	11
Slide	22
Splat	22
Details	30



CSL Architectural luminaires feature innovative and inspiring designs that illuminate with style to enhance any environment.

CSL Architectural luminaires are designed, engineered and manufactured to the highest standards and deliver impressive performance from multiple lamp source options, including high-performance LED, Xenon, HID, and compact fluorescent. Their versatility is endless, with many fixtures UL Listed for wet location.



Entity

LED



SS2015 Series

120-277V 16W LED

5"Ø x 3½"



Fixture

- 16W LED, 2,700°K ±100°K, CRI 85, 1,250 lm
- 120-277V incandescent dimming integral driver
- 25°, 45°, 65° optics included; optional 85° optic available
- Flush or pendant mount
- UL/C-UL Listed for damp location

Housing

- Diecast aluminum housing
- Spun aluminum shades

Finish

- Satin Aluminum, Bronze, White

Accessories

- Stem Kit: 1-6", 2-12", 1-18" stems with hang-straight canopy
- Shades: Flat Disc, Shallow Bowl, Deep Bowl
- 85° optic

Shades



SS2015-SHDA Series

Flat Disc 16"Ø x 1/8"h

SS2015-SHDB Series

Shallow Bowl 16"Ø x 1 1/2"h

SS2015-SHDC Series

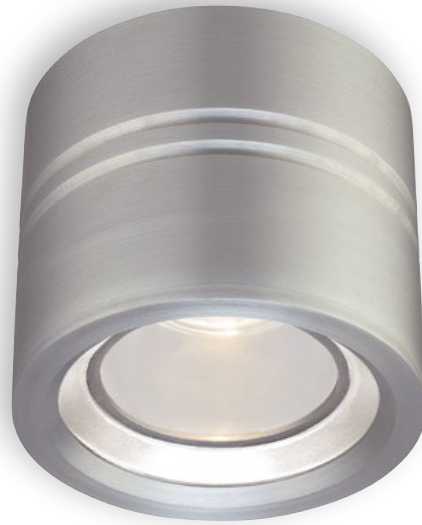
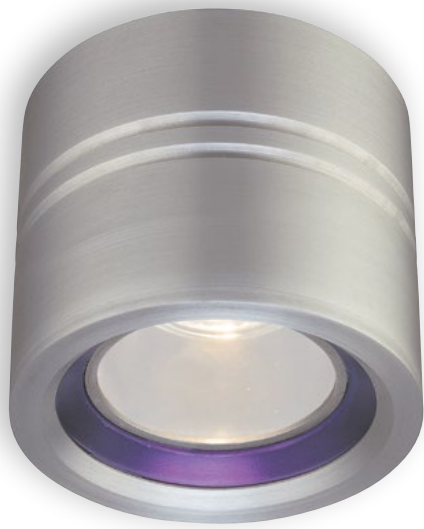
Deep Bowl 16"Ø x 4 1/2"h

Stem Kits



SS2015-STMKIT Series

1-6", 2-12", 1-18" stems with hang-straight canopy



Entity

Xenon

Fixture

- 120V 35W MR16 GU10, incandescent dimming
- Low-voltage option: 12V 35W MR16 GU5.3, ELV dimming
- Flush mount
- UL/C-UL Listed for damp location

Housing

- Diecast aluminum housing
- Glass accent ring

Finish

- Opal Conical Glass – Satin Aluminum, Bronze, White
- Blue Conical Glass – Satin Aluminum

Blue Conical Glass



SS1015A-SA

120V 35W MR16
4½"Ø x 4"h

Opal Conical Glass



SS1015B Series

120V 35W MR16

SS1015B-LV Series

12V 35W MR16
4½"Ø x 4"h



Single Optic

Xenon



SS1028A Series

120V 35W Xenon
5"Ø x 4"p

Dual Optic

Xenon

HID



SS1028B Series

120V 35W Xenon
5"Ø x 4"p



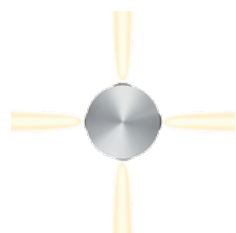
SS2028B Series

120V 39W CMH
5"Ø x 5¼"p

Quad Optic

Xenon.LED

HID



SS1028C Series

120V 35W Xenon

SS3028C Series

120V 9W LED
5"Ø x 4"p



SS2028C Series

120V 39W CMH
5"Ø x 5¼"p

Compass

Fixture

- Xenon: 120V 35W Xenon G8 Bi-pin; incandescent dimming
- HID: 120V 60Hz, 39W CMH GU6.5, Integral HID ballast, non-dimming (lamp not included)
- LED: 120V 9W 2800K +/- 100K, 85CRI, 450 lumens, non-dimming
- Xenon/LED: ADA
- Xenon/LED: Wall and flush mount
HID: Wall mount
- UL/C-UL Listed for wet location

Housing

- Diecast and extruded aluminum housing
- Optical glass lens

Finish

- Satin Aluminum, Bronze (Xenon/LED only)

Xenon
HID
LED



Gravity

Xenon
LED



SS1010 Series

120V 35W Xenon

SS1012 Series

120V 9W LED
5"Ø x 4"p

Fixture

- Xenon: 120V 35W Xenon G8 Bi-pin , incandescent dimming
- LED: 120V 9W LED, 2,700°K±100°K, CRI 85, 450 lm, non-dimming
- ADA
- Wall and flush mount
- UL/C-UL Listed for wet location

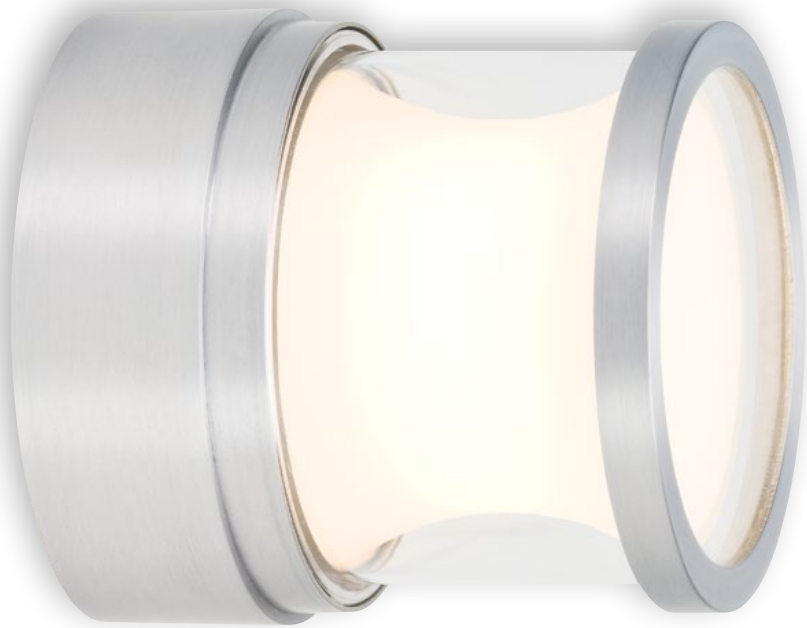
Housing

- Diecast aluminum housing
- Opal glass inner diffuser with clear glass outer cylinder

Finish

- Satin Aluminum, Bronze





Gravity

HID

Fixture

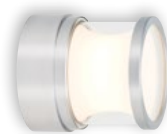
- 39W CMH GU6.5 (not included);
120V 60Hz Integral HID ballast,
- Non-dimming
- Wall mount
- UL/C-UL Listed for wet location

Housing

- Diecast aluminum housing
- Opal glass inner diffuser with clear
glass outer cylinder

Finish

- Satin Aluminum



SS2010-SA
120V 39W CMH
5"Ø x 5¼"p



CFL



SS1021 Series

120V 13W CFL Quad
8½"Ø x 4"p

CFL XL



SS1011 Series

120V 18W or 26W CFL Triple
13½"Ø x 5¾"p

Fixture

- CFL: 120V 13W CFL Quad G24q-1
CFL XL: 120V 18W CFL Triple G24q-2 or
120V 26W CFL Triple G24q-3
- Non-dimming
- Wall and flush mount
- UL/C-UL Listed for wet location (SS1021)
- UL/C-UL listed for damp location (SS1011)

Housing

- CFL: Diecast aluminum housing
CFL XL: Chrome-plated steel housing
- Opal glass inner diffuser with clear acrylic
outer cylinder

Finish

- CFL: Satin Aluminum, Bronze
CFL XL: Brushed Chrome

Gravity

CFL
CFL XL





LED Single



SS2020B Series

120V 10W LED
5¼"h x 4½"w x 3½"p

LED Dual



SS2020A Series

120V 20W LED
9¼"h x 4½"w x 3½"p

Fixture

- Single: 120V 10W LED, 2,700°K ±100°K, CRI 80, 600 lm
- Dual: 20W LED, 2,700°K ±100°K, CRI 80, 1200 lm
- 120V integral driver
- Non-dimming
- 25°, 45°, 65° optics included
- ADA
- Wall mount, up or down position
- UL/C-UL Listed for wet location

Housing

- Diecast and extruded aluminum housing

Finish

- Satin Aluminum, Bronze, White



Silo

LED



Silo

CFL



SS1020C Series

120V 13W CFL Quad
7¾" h x 4½" w x 3½" p

Fixture

- 120V 13W CFL Quad GU24
- Non-dimming
- ADA
- Wall mount, up or down position
- UL/C-UL Listed for wet location

Housing

- Diecast and extruded aluminum housing

Finish

- Satin Aluminum, Bronze, White



Single



SS1020B Series

120V 35W MR16

SS1020B-LV Series

12V 35W MR16

5" h x 4½" w x 3½" p

Dual



SS1020A Series

120V 2-35W MR16

6¼" h x 4½" w x 3½" p

Fixture

- Dual: 120V 35W MR16 GU10, incandescent dimming
- Single: 120V 35W MR16 GU10, incandescent dimming or 12V 35W MR16 GU5.3, ELV dimming
- Transformer included (12V only)
- ADA
- Wall mount, up or down position
- UL/C-UL Listed for wet location

Housing

- Diecast and extruded aluminum housing

Finish

- Satin Aluminum, Bronze, White

Silo

MR16



Bullet

120V or
12V MR16



SS1005 Series

120V 35W MR16

SS1005B-LV Series

12V 35W MR16
6¼" h x 4" w x 2¾" p

Fixture

- 120V 35W MR16 GU10, incandescent dimming
- Low-voltage option: 12V 35W MR16 GU5.3, transformer included (12V only), ELV dimming
- ADA
- Wall mount
- Mounts to standard switch box
- UL/C-UL Listed for damp location

Housing

- Diecast aluminum housing

Finish

- Satin Aluminum, Bronze



Cube

Xenon

Fixture

- 120V 35W Xenon G8 Bi-pin
- Incandescent dimming
- ADA
- Wall mount
- UL/C-UL Listed for wet location

Housing

- Diecast aluminum housing and inserts
- Insert options:
 - CU-1 Solid Insert
 - CU-2 Frosted Glass
 - CU-3 Blue Glass
 - CU-4 Single Slot
 - CU-5 Dual Slot

Finish

- Satin Aluminum



Frosted Glass



Blue Glass



Single Slot



Dual Slot

SS1013-SA

120V 35W Xenon
4½"h x 4½"w x 4"p



Arch

Xenon

Fixture

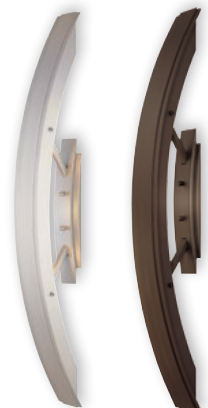
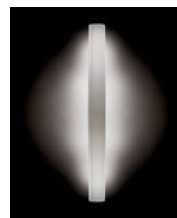
- 12V 5-10W Xenon Festoon
- Transformer included
- ELV dimming
- ADA
- Wall mount
- Mounts to standard switch box
- UL/C-UL Listed for damp location

Housing

- Extruded aluminum housing

Finish

- Satin Aluminum, Bronze



SS1027 Series

12V 5-10W Xenon
24½" h x 2¼" w x 3½" p





Orb

MR16
LED



SS1042A Series

12V 35W MR16

SS1042B Series

120V 3W LED

5¼"Ø x 3¾"p

Fixture

- MR16: 12V 35W MR16 GU5.3 , ELV dimming
- LED: 120V 3W LED, 2,700°K ±100°K, CRI 80, 180 lm, non-dimming
- Transformer or driver included
- Rotates 120° off center
- ADA
- Wall mount
- UL/C-UL Listed for wet location (SA, BZ)
- UL/C-UL Listed for damp location (PN)

Housing

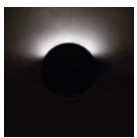
- Spun aluminum housing
- Opal glass diffuser

Finish

- Satin Aluminum, Bronze, Polished Nickel



Single Optic



SS1050A Series

120V 3W LED
4¾"Ø x 1½"p

Fixture

- Single Optic: 120V 3W LED, 2,700°K, CRI 80, 240 lm
- Dual Optic: 120V 6W LED, 2,700°K, CRI 80, 480 lm
- Non-dimming
- ADA
- Wall and flush mount
- UL/C-UL Listed for wet location (SA, BZ)

Disc

LED

Dual Optic



SS1050B Series

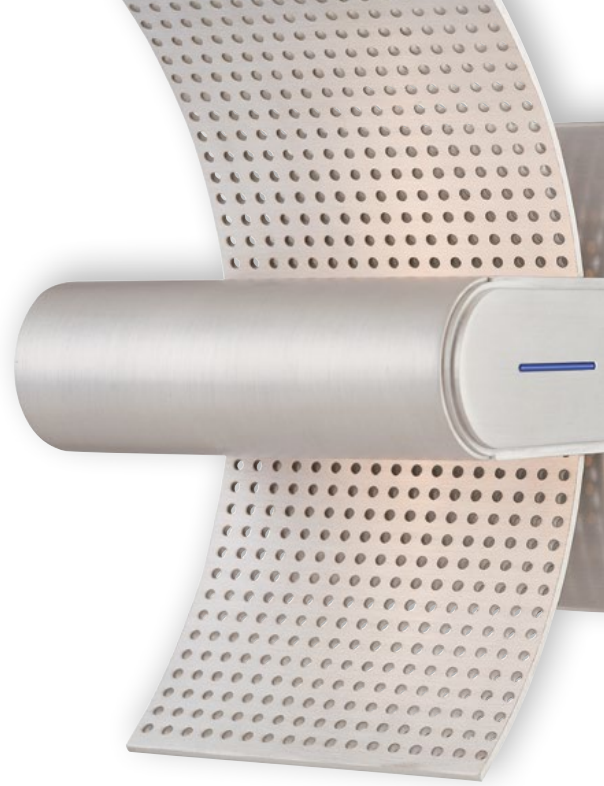
120V 6W LED
4¾"Ø x 1½"p

Housing

- Machined aluminum housing
- Glass lens

Finish

- Satin Aluminum, Bronze



Gear

Xenon

Fixture

- 120V 35W Xenon G8 Bi-pin
- Incandescent dimming
- ADA
- Wall and flush mount
- UL/C-UL Listed for wet location

Housing

- Diecast aluminum housing
- Glass diffuser

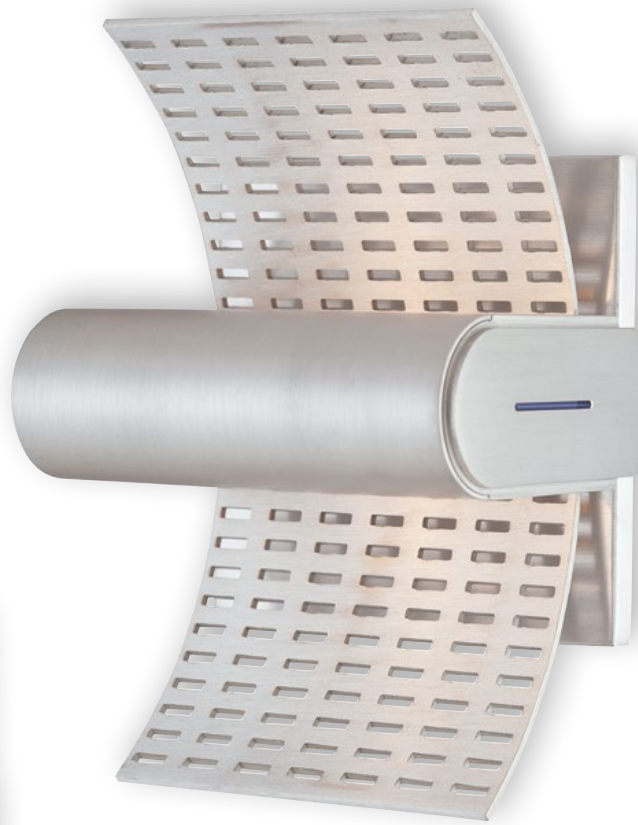
Finish

- Satin Aluminum, Bronze



SS1014

120V 35W Xenon
5"Ø x 4"p



Sail

Xenon

Fixture

- 120V 2-20W Xenon G8 Bi-pin
- Incandescent dimming
- ADA
- Wall mount
- UL/C-UL Listed for damp location

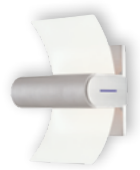
Housing

- Diecast aluminum housing
- Aluminum or frosted glass curved reflector
- Blue dichroic accents

Finish

- Satin Aluminum

Sail Glass

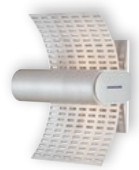


SS1022A-SA

120V 2-20W Xenon
7½"h x 5¼"w x 3¾"p

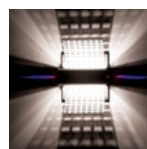


Sail Pierced

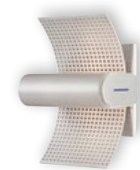


SS1022B-SA

120V 2-20W Xenon
7½"h x 5¼"w x 3¾"p



Sail Perf



SS1022C-SA

120V 2-20W Xenon
7½"h x 5¼"w x 3¾"p





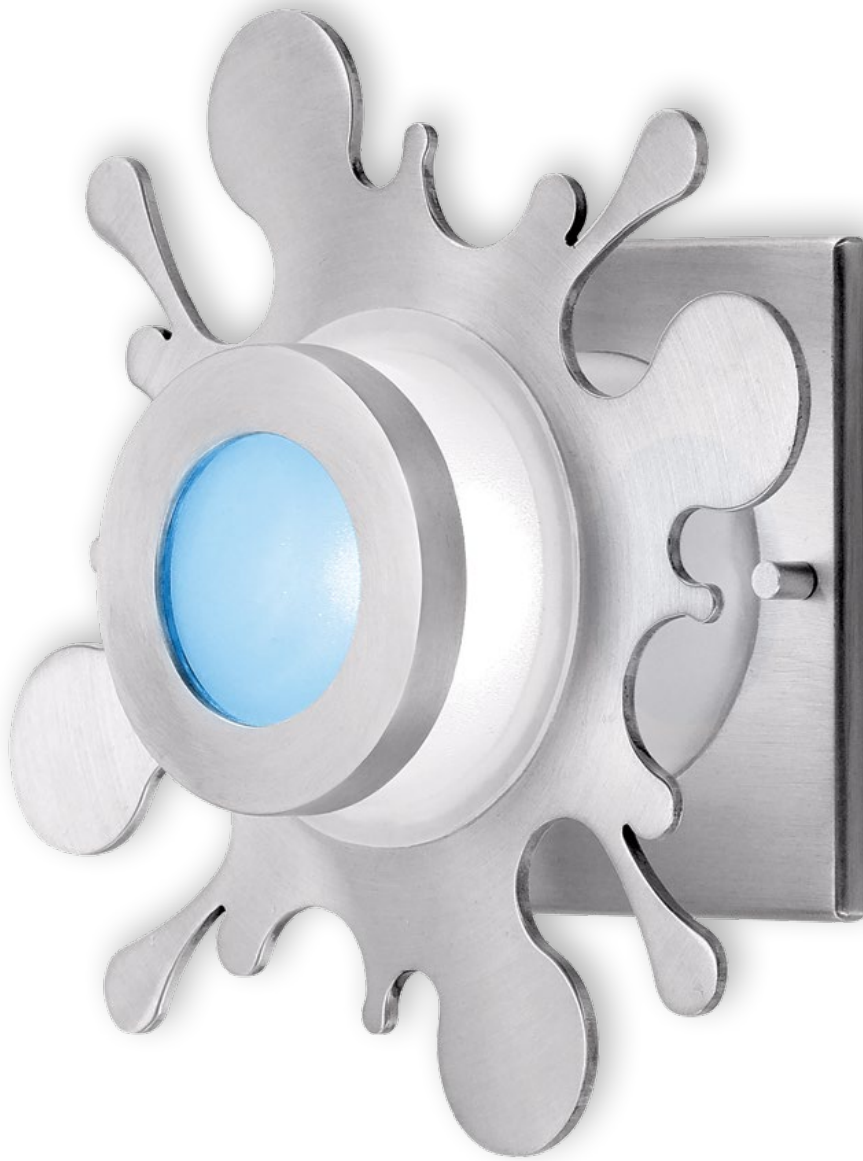
Slide
Splat

Xenon

Slide



SS1000-SA
120V 35W Xenon
7½"Ø x 3¾"p



Splat



SS1001-SA

120V 35W Xenon
8"Ø x 3¼"p

Fixture

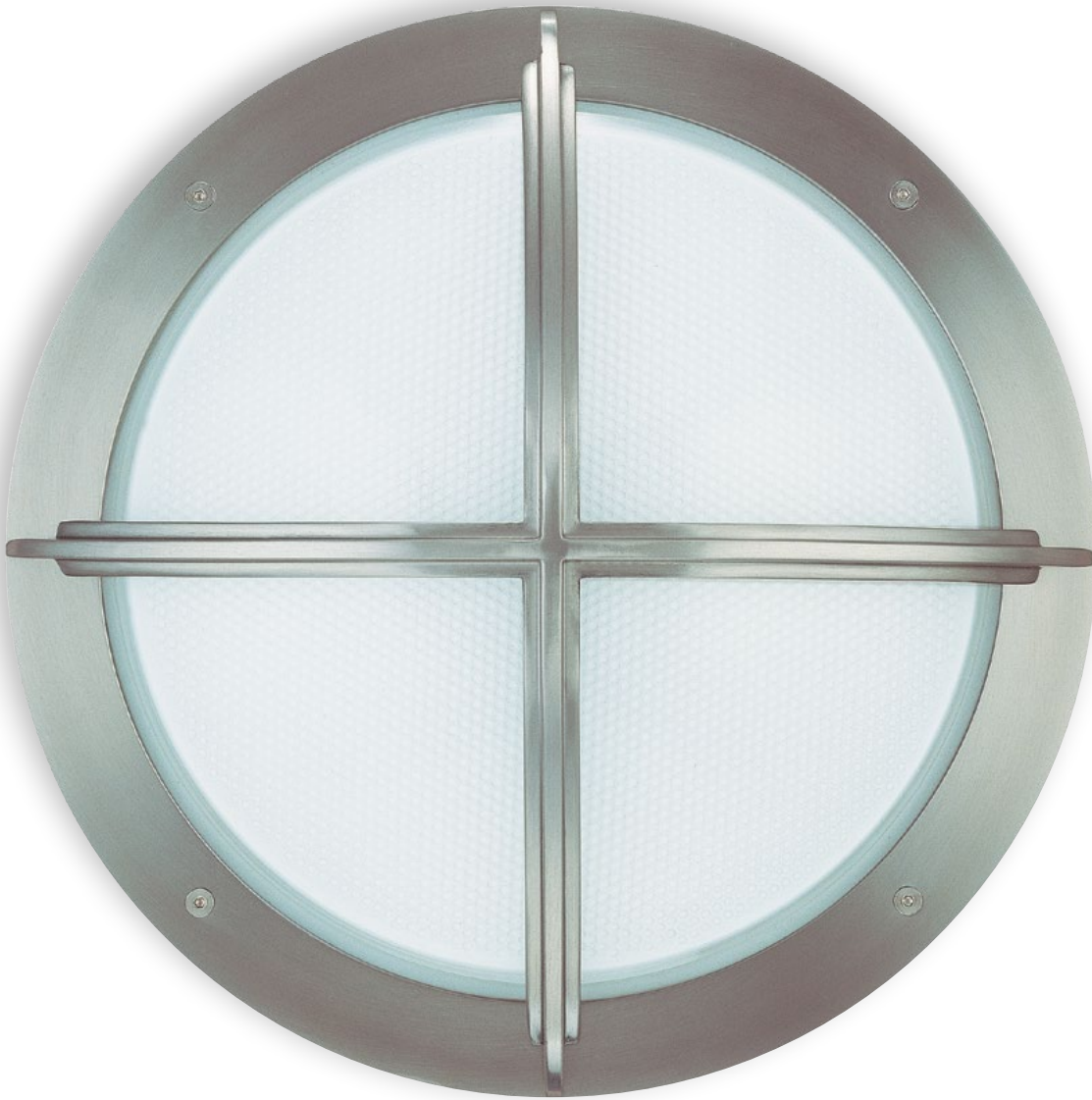
- 120V 35W Xenon G8 Bi-pin
- Incandescent dimming
ADA
- Wall or flush mount
- UL/C-UL Listed for wet location

Housing

- Diecast aluminum housing
- Glass diffuser and cylinder

Finish

- Satin Aluminum



Element

120V
Xenon
CFL

Fixture

- Xenon: 120V 20W Xenon G8, incandescent dimming
- CFL: 120V 26W CFL Triple G24q-3, non dimming
- ADA
- Xenon: Wall mount
CFL: Wall and flush mount
- UL/C-UL Listed for wet location

Housing

- Diecast stainless steel housing
- Honeycomb-pattern glass diffuser

Finish

- Brushed Stainless



SS1051A-SS

20W Xenon
6"Ø x 2¼"p



SS1051B-SS

26W CFL Triple
12"Ø x 4"p





Level Wall

Xenon
LED

Fixture

- Xenon: 120V 4-15W Xenon G8 Bi-pin, incandescent dimming
- LED: 120V 4W LED, 2,700°K ±100°K, CRI 80, 240 lm, non-dimming
- ADA
- Xenon: Wall mount
LED: Wall and flush mount
- UL/C-UL Listed for wet location

Housing

- Diecast aluminum housing
- Frosted grid glass diffuser

Finish

- Satin Aluminum, Bronze



SS1016A Series

120V 4-15W Xenon

SS1016B Series

120V 4W LED
6¾"h x 6¾"w x 1¾"p



Edge

CFL



SS1030A Series

120V 18W CFL Triple
8¾"h x 8¾"w x 3½"p

Fixture

- CFL: 120V 18W CFL Triple G24q-2
- LED: 120V 4W LED, 2,700°K ±100°K, CRI 80, 240 lm
- Non-dimming
- ADA
- Wall mount
- UL/C-UL Listed for wet location

Housing

- Diecast aluminum housing
- Linear prismatic glass diffuser

Finish

- Satin Aluminum, Bronze

CFL
LED

LED



SS1030B Series

120V 4W LED
6"h x 6"w x 2½"p



Eclipse Flush

Xenon



SS1019-SA

120V 4-20W Xenon
12"Ø x 4½"p
Inner ring 6¼"

Fixture

- 120V 4-20W Xenon G8 Bi-pin
- Incandescent dimming
- Flush mount
- UL/C-UL Listed for damp location

Housing

- Spun aluminum housing

Finish

- Satin Aluminum



Fixture

- Integral proprietary 120-277V input LED Driver, 90% efficient, 0.99 power factor
- UL/C-UL Listed for damp location

LEDs

- High-performance LEDs:
Warm White – 2,800°K, ±100, CRI 85
- 50,000 hours at 70% lumen maintenance (L70)
- LM79 test results available at cslighting.com
- Incandescent (triac) dimming
- Field-replaceable light engine and driver
- Light engine coded for performance maintenance replacement

Body

- Extruded aluminum body
- Machined aluminum end caps
- Spun aluminum canopy
- 1-6", 2-12", 1-18" stems with hang straight canopy
- Bronze, Satin Aluminum and White finishes

Optics / Accessories

- Three optic lenses included:
25°, 45° and 65°
- Optional 12° & 85° optics available (12° only for LP5)
- Solite lens included



LP-2 Series

2" ø 120V 14W 800 lm

LP-3 Series

3" ø 120V 16W 1250 lm

LP-5 Series

5" ø 120V 38W 2500 lm

LED Pendants

LED

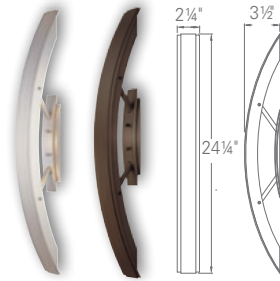
Arch

Fixture

- 12V 5-10W Xenon Festoon²
- Transformer included
- ADA wall mount
- Mounts to standard switch box
- UL/C-UL Listed for damp location

Housing

- Extruded aluminum housing



FIXTURE	DESCRIPTION	FINISH
SS1027-SA	12V 5-10W Xenon	Satin Aluminum
SS1027-BZ	12V 5-10W Xenon	Bronze

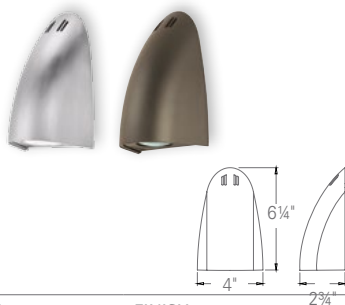
Bullet

Fixture

- MR16: 120V 35W MR16 GU10¹
- Low-voltage option: 12V 35W MR16 GU5.3, transformer included (12V only)²
- ADA wall mount
- Mounts to standard switch box
- UL/C-UL Listed for damp location

Housing

- Diecast aluminum housing



FIXTURE	DESCRIPTION	FINISH
SS1005-SA	12V 35W MR16 GU10	Satin Aluminum
SS1005-BZ	12V 35W MR16 GU10	Bronze
SS1005B-LV-SA	12V 35W MR16 GU5.3	Satin Aluminum
SS1005B-LV-BZ	12V 35W MR16 GU5.3	Bronze

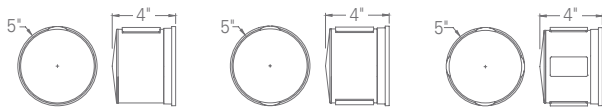
Compass - Xenon

Fixture

- 120V 35W Xenon G8 Bi-pin¹
- ADA wall and flush mount
- UL/C-UL Listed for wet location

Housing

- Diecast and extruded aluminum housing
- Optical glass lens



FIXTURE	OPTIC OPTION	FINISH
SS1028A-SA	Single optic	Satin Aluminum
SS1028A-BZ	Single optic	Bronze
SS1028B-SA	Dual optic	Satin Aluminum
SS1028B-BZ	Dual optic	Bronze
SS1028C-SA	Quad optic	Satin Aluminum
SS1028C-BZ	Quad optic	Bronze

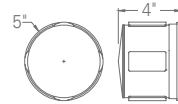
Compass - LED

Fixture

- 120V 9W LED³
- ADA wall and flush mount
- UL/C-UL Listed for wet location

Housing

- Diecast and extruded aluminum housing
- Optical glass lens



FIXTURE	OPTIC OPTION	FINISH
SS3028C-SA	Quad optic	Satin Aluminum
SS3028C-BZ	Quad optic	Bronze

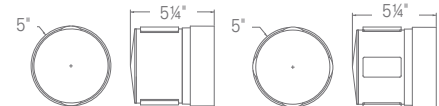
Compass - HID

Fixture

- 120V 60Hz, 39W CMH GU6.5, Integral HID ballast³ (lamp not included)
- Wall mount
- UL/C-UL Listed for wet location

Housing

- Diecast and extruded aluminum housing
- Optical glass lens



FIXTURE	OPTIC OPTION	FINISH
SS2028B-SA	Dual optic	Satin Aluminum
SS2028C-SA	Quad optic	Satin Aluminum

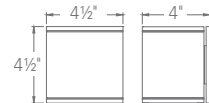
Cube

Fixture

- 120V 35W Xenon G8 Bi-pin¹
- ADA wall mount
- UL/C-UL Listed for wet location

Housing

- Diecast aluminum housing and inserts
- Five cube insert options, two inserts required



FIXTURE	FINISH	INSERT OPTIONS
SS1013-SA	Satin Aluminum	CU-1 Solid Insert
		CU-2 Frosted Glass
		CU-3 Blue Glass
		CU-4 Single Slot
		CU-5 Dual Slot

Dimming

- ¹ Incandescent dimming
- ² ELV dimming
- ³ Non-dimming

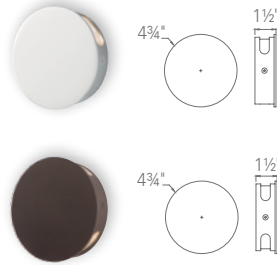
Disc

Fixture

- Single Optic: 120V 3W LED, 2,700°K, CRI 80, 240 lm³
- Dual Optic: 120V 6W LED, 2,700°K, CRI 80, 480 lm³
- ADA wall and flush mount
- UL/C-UL Listed for wet location (SA, BZ only)

Housing

- Machined aluminum housing
- Glass lens



FIXTURE	DESCRIPTION	FINISH
SS1050A-SA	Single optic, 120V 3W LED	Satin Aluminum
SS1050A-BZ	Single optic, 120V 3W LED	Bronze
SS1050B-SA	Dual optic, 120V 6W LED	Satin Aluminum
SS1050B-BZ	Dual optic, 120V 6W LED	Bronze

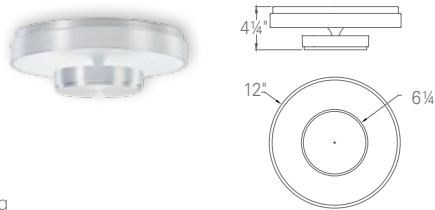
Eclipse Flush

Fixture

- 120V 4-20W Xenon G8 Bi-pin¹
- Flush mount
- UL/C-UL Listed for damp location

Housing

- Spun aluminum housing



FIXTURE	DESCRIPTION	FINISH
SS1019-SA	120V 4-20W Xenon	Satin Aluminum

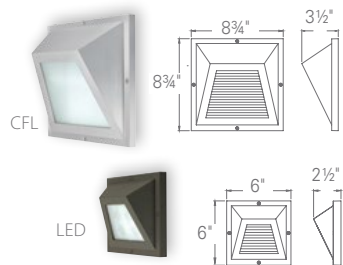
Edge

Fixture

- CFL: 120V 18W CFL Triple G24q-2³
- LED: 120V 4W LED, 2,700°K ±100°K, CRI 80, 240 lm³
- ADA wall mount
- UL/C-UL Listed for wet location

Housing

- Diecast aluminum housing
- Linear prismatic glass diffuser



FIXTURE	DESCRIPTION	FINISH
SS1030A-SA	120V 18W CFL Triple	Satin Aluminum
SS1030A-BZ	120V 18W CFL Triple	Bronze
SS1030B-SA	120V 4W LED	Satin Aluminum
SS1030B-BZ	120V 4W LED	Bronze

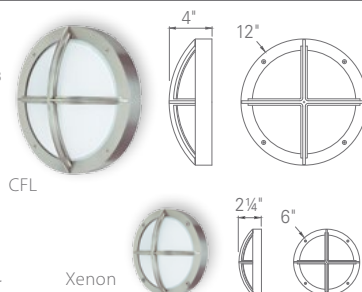
Element

Fixture

- Xenon: 120V 20W Xenon G8¹
- CFL: 120V 26W CFL Triple G24q-3³
- ADA
- Xenon: Wall mount
- CFL: Wall and flush mount
- UL/C-UL Listed for wet location

Housing

- Diecast stainless steel housing
- Honeycomb-pattern glass diffuser



FIXTURE	DESCRIPTION	FINISH
SS1051A-SS	120V 20W Xenon	Brushed Stainless
SS1051B-SS	120V 26W CFL Triple	Brushed Stainless

Entity LED

Fixture

- 120-277V 16W LED, 2,700°K ±100°K, CRI 85, 1,250 lm¹
- 120-277V INC dimmable integral driver
- 25°, 45°, 65° optics included; optional 85° optic available
- Flush or pendant mount
- UL/C-UL Listed for damp location

Housing

- Diecast aluminum housing
- Spun aluminum shades

Accessories

- Stem Kit: 1-6", 2-12", 1-18" stems with hang-straight canopy
- Shades: Flat Disc, Shallow Bowl, Deep Bowl
- 85° optic



FIXTURE	DESCRIPTION	FINISH
SS2015-SA-3	120-277V 16W LED	Satin Aluminum
SS2015-BZ-3	120-277V 16W LED	Bronze
SS2015-WT-3	120-277V 16W LED	White
ACCESSORY	DESCRIPTION	FINISH
SS2015-SHDA-SA	Flat Disc Shade	Satin Aluminum
SS2015-SHDA-BZ	Flat Disc Shade	Bronze
SS2015-SHDA-WT	Flat Disc Shade	White
SS2015-SHDB-SA	Shallow Bowl Shade	Satin Aluminum
SS2015-SHDB-BZ	Shallow Bowl Shade	Bronze
SS2015-SHDB-WT	Shallow Bowl Shade	White
SS2015-SHDC-SA	Deep Bowl Shade	Satin Aluminum
SS2015-SHDC-BZ	Deep Bowl Shade	Bronze
SS2015-SHDC-WT	Deep Bowl Shade	White
SS2015-STMKIT-SA	Stem Kit: 1-6", 2-12", 1-18" stems with hang-straight canopy	Satin Aluminum
SS2015-STMKIT-BZ	Stem Kit: 1-6", 2-12", 1-18" stems with hang-straight canopy	Bronze
SS2015-STMKIT-WT	Stem Kit: 1-6", 2-12", 1-18" stems with hang-straight canopy	White
EDL-85-OPTIC-3	85° optic	

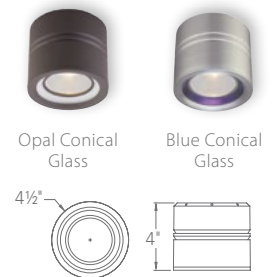
Entity

Fixture

- 35W MR16 120V¹
- Low-voltage option: 12V 35W MR16 GU5.3, transformer included (12V only)²
- Flush mount
- UL/C-UL Listed for damp location

Housing

- Diecast aluminum housing
- Glass accent ring



FIXTURE	DESCRIPTION	FINISH
SS1015A-SA	Blue Conical Glass	Satin Aluminum
SS1015B-SA	Opal Conical Glass	Satin Aluminum
SS1015B-BZ	Opal Conical Glass	Bronze
SS1015B-WT	Opal Conical Glass	White
SS1015B-LV-SA	Opal Conical Glass – Low Voltage	Bronze
SS1015B-LV-BZ	Opal Conical Glass – Low Voltage	White
SS1015B-LV-WT	Opal Conical Glass – Low Voltage	Satin Aluminum

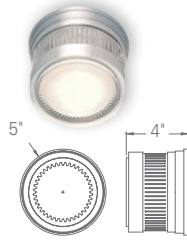
Gear

Fixture

- 120V 35W Xenon G8 Bi-pin ¹
- ADA wall and flush mount
- UL/C-UL Listed for wet location

Housing

- Diecast aluminum housing
- Glass diffuser



FIXTURE	DESCRIPTION	FINISH
SS1014-SA	120V 35W Xenon	Satin Aluminum
SS1014-BZ	120V 35W Xenon	Bronze

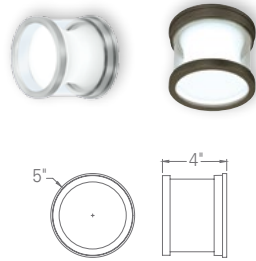
Gravity Xenon & LED

Fixture

- Xenon: 120V 35W Xenon G8 Bi-pin ¹
- LED: 120-220V 9W LED, 2,700°K ±100°K, CRI 85. 450 lm ³
- ADA wall and flush mount
- UL/C-UL Listed for wet location

Housing

- Diecast aluminum housing
- Opal glass inner diffuser with clear glass outer cylinder



FIXTURE	DESCRIPTION	FINISH
SS1010-SA	120V 35W Xenon	Satin Aluminum
SS1010-BZ	120V 35W Xenon	Bronze
SS1012-SA	120-220V 9W LED	Satin Aluminum
SS1012-BZ	120-220V 9W LED	Bronze

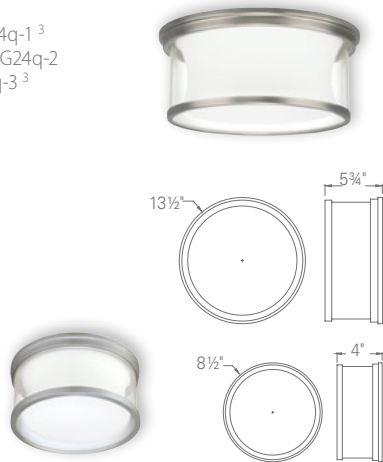
Gravity CFL & CFL XL

Fixture

- CFL: 120V 13W CFL Quad G24q-1 ³
- CFL XL: 120V 18W CFL Triple G24q-2 or 120V 26W CFL Triple G24q-3 ³
- Wall and flush mount
- UL/C-UL Listed for wet location (SS1021)
- UL/C-UL listed for damp location (SS1011)

Housing

- CFL: Diecast aluminum housing
- CFL XL: Chrome-plated steel housing
- Opal glass inner diffuser with clear acrylic outer cylinder



FIXTURE	DESCRIPTION	FINISH
SS1021-SA	13W CFL Quad	Satin Aluminum
SS1021-BZ	13W CFL Quad	Bronze
SS1011A-BC	XL 1-18W CFL Triple	Brushed Chrome
SS1011B-BC	XL 1-26W CFL Triple	Brushed Chrome
SS1011C-BC	XL 2-18W CFL Triple	Brushed Chrome
SS1011D-BC	XL 2-26W CFL Triple	Brushed Chrome

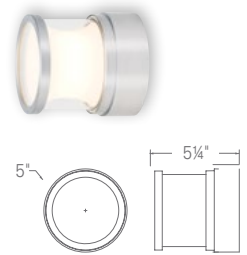
Gravity HID

Fixture

- 39W CMH GU6.5 (not included); 120V 60Hz Integral HID ballast ³
- Wall mount
- UL/C-UL Listed for wet location

Housing

- Diecast aluminum housing
- Opal glass inner diffuser with clear glass outer cylinder



FIXTURE	DESCRIPTION	FINISH
SS2010-SA	39W CMH GU6.5	Satin Aluminum

LED Pendants

Fixture

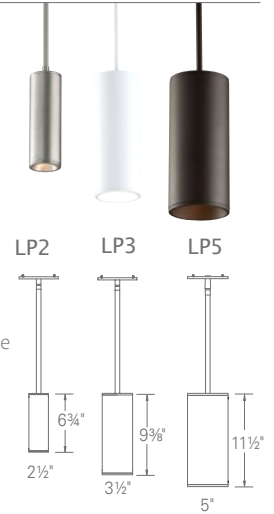
- Integral proprietary 120-277V input LED Driver, 90% efficient, 0.99 power factor ¹
- UL/C-UL Listed for damp location

LEDs

- High-performance LEDs:
- Warm White – 2,800°K, ±100, CRI 85
- 50,000 hours at 70% lumen maintenance (L70)
- LM79 test results available at csllighting.com
- Incandescent (triac) dimmable
- Field-replaceable light engine and driver
- Light engine coded for performance maintenance replacement

Body

- Extruded aluminum body
- Machined aluminum end caps
- Spun aluminum canopy
- 1-6", 2-12", 1-18" stems with hang straight canopy



FIXTURE	DESCRIPTION	FINISH
LP2-WT-WW	2"Ø 14W LED 800 lm	White
LP2-BZ-WW	2"Ø 14W LED 800 lm	Bronze
LP2-SA-WW	2"Ø 14W LED 800 lm	Satin Aluminum
LP3-WT-WW	3"Ø 16W LED 1250 lm	White
LP3-BZ-WW	3"Ø 16W LED 1250 lm	Bronze
LP3-SA-WW	3"Ø 16W LED 1250 lm	Satin Aluminum
LP5-WT-WW	5"Ø 38W LED 2500 lm	White
LP5-BZ-WW	5"Ø 38W LED 2500 lm	Bronze
LP5-SA-WW	5"Ø 38W LED 2500 lm	Satin Aluminum

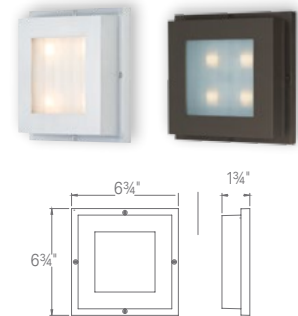
Level Wall

Fixture

- Xenon: 120V 4-15W Xenon G8 Bi-pin ¹
- LED: 120V 4W LED, 2,700°K ±100°K, CRI 80, 240 lm ³
- ADA
- Xenon: Wall mount
- LED: Wall and flush mount
- UL/C-UL Listed for wet location

Housing

- Diecast aluminum housing
- Frosted grid glass diffuser

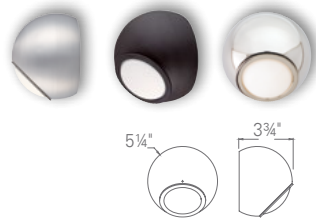


FIXTURE	DESCRIPTION	FINISH
SS1016A-SA	120V 4-15W Xenon	Satin Aluminum
SS1016A-BZ	120V 4-15W Xenon	Bronze
SS1016B-SA	120V 4W LED	Satin Aluminum
SS1016B-BZ	120V 4W LED	Bronze

Orb

Fixture

- MR16: 12V 35W MR16 GU5.3²
- LED: 120V 3W LED, 2,700°K ±100°K, CRI 80, 180 lm³
- Transformer or driver included
- Rotates 120° off center
- ADA wall mount
- UL Listed for wet location (SA, BZ)
- UL Listed for damp location (PN)



Housing

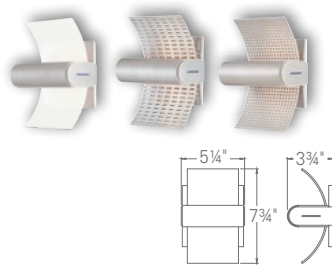
- Spun aluminum housing
- Opal glass diffuser

FIXTURE	DESCRIPTION	FINISH
SS1042A-SA	12V 35W MR16	Satin Aluminum
SS1042A-BZ	12V 35W MR16	Bronze
SS1042A-PN	12V 35W MR16	Polished Nickel
SS1042B-SA	120V 3W LED,	Satin Aluminum
SS1042B-BZ	120V 3W LED,	Bronze
SS1042B-PN	120V 3W LED,	Polished Nickel

Sail

Fixture

- 120V 2-20W Xenon G8 Bi-pin¹
- ADA wall mount
- UL/C-UL Listed for damp location



Housing

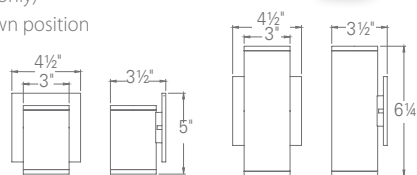
- Diecast aluminum housing
- Aluminum or frosted glass curved reflector with blue dichroic accents

FIXTURE	DESCRIPTION	REFLECTOR	FINISH
SS1022A-SA	120V 2-20W Xenon	Glass	Satin Aluminum
SS1022B-SA	120V 2-20W Xenon	Pierced	Satin Aluminum
SS1022C-SA	120V 2-20W Xenon	Perf	Satin Aluminum

Silo Single & Dual

Fixture

- Dual: 120V 35W MR16 GU10¹
- Single: 120V 35W MR16 GU10¹
- Low-voltage: 12V 35W MR16 GU5.3²
- Transformer included (12V only)
- ADA wall mount, up or down position
- UL/C-UL Listed for wet location



Housing

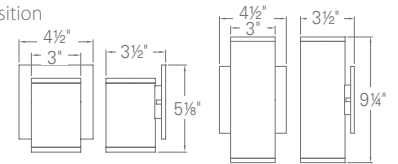
- Diecast and extruded aluminum housing

FIXTURE	DESCRIPTION	FINISH
SS1020A-SA	Dual 120V 35W MR16	Satin Aluminum
SS1020A-BZ	Dual 120V 35W MR16	Bronze
SS1020A-WT	Dual 120V 35W MR16	White
SS1020B-SA	Single 120V 35W MR16	Satin Aluminum
SS1020B-BZ	Single 120V 35W MR16	Bronze
SS1020B-WT	Single 120V 35W MR16	White
SS1020B-LV-SA	Single 12V 35W MR16	Satin Aluminum
SS1020B-LV-BZ	Single 12V 35W MR16	Bronze
SS1020B-LV-WT	Single 12V 35W MR16	White

Silo LED

Fixture

- Single: 120V 10W LED, 2,700°K ±100°K, CRI 80, 600 lm³
- Dual: 120V 20W LED, 2,700°K ±100°K, CRI 80, 1200 lm³
- 120V integral driver
- 25°, 45°, 65° optics included
- ADA wall mount, up or down position
- UL/C-UL Listed for wet location



Housing

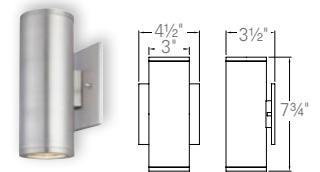
- Diecast and extruded aluminum housing

FIXTURE	DESCRIPTION	FINISH
SS2020A-SA	Dual 120V 20W LED	Satin Aluminum
SS2020A-BZ	Dual 120V 20W LED	Bronze
SS2020A-WT	Dual 120V 20W LED	White
SS2020B-SA	Single 120V 10W LED	Satin Aluminum
SS2020B-BZ	Single 120V 10W LED	Bronze
SS2020B-WT	Single 120V 10W LED	White

Silo CFL

Fixture

- 120V 13W CFL Quad GU24³
- ADA wall mount, up or down position
- UL/C-UL Listed for wet location



Housing

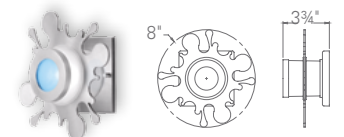
- Diecast and extruded aluminum housing

FIXTURE	DESCRIPTION	FINISH
SS1020C-SA	120V 13W CFL Quad	Satin Aluminum
SS1020C-BZ	120V 13W CFL Quad	Bronze
SS1020C-WT	120V 13W CFL Quad	White

Spot

Fixture

- 120V 35W Xenon G8 Bi-pin¹
- ADA wall or flush mount
- UL/C-UL Listed for wet location



Glass Tube: 3"Ø
Backplate: 4 1/2" x 4 1/2"

Housing

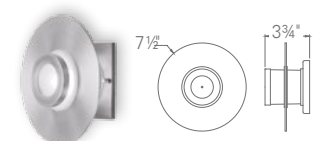
- Diecast aluminum housing
- Glass diffuser and cylinder

FIXTURE	DESCRIPTION	FINISH
SS1001-SA	120V 35W Xenon	Satin Aluminum

Slide

Fixture

- 120V 35W Xenon G8 Bi-pin¹
- ADA wall or flush mount
- UL/C-UL Listed for wet location



Glass Tube: 3"Ø
Backplate: 4 1/2" x 4 1/2"

Housing

- Diecast aluminum housing
- Glass diffuser and cylinder

FIXTURE	DESCRIPTION	FINISH
SS1000-SA	120V 35W Xenon	Satin Aluminum



5" Eco-Downlight LED	2
5" Trims	4
5" Details	6
3" Eco-Downlight LED	9
3" Eco-Downlight LED Adjustable	9
3" Round Trims	10
3" Adjustable Round Trims	10
3" Square Trims	12
3" Adjustable Square Trims	12
3" Details	14
1" Eco-Downlight LED	18
1" Trims	19
1" Details	20



The CSL LED Downlight line has been designed and engineered as a true, high-performance replacement for low-efficacy recessed lighting.

The CSL LED Downlights line offers environmentally efficient illumination, as well as the style, functionality and dependability that distinguishes CSL as an industry leader.

Available in 5", 3" and 1" apertures, these high-performance fixtures feature sustainable, zero-maintenance LED engines and meet L-70 standards.



Eco-Downlight LED

5" Recessed Downlights

Fixture

- High-performance COB LEDs:
 - 38W, 2,700°K, ±50, CRI 90, 2815 lm
 - 38W, 3,000°K, ±50, CRI 90, 3012 lm
 - 38W, 3,500°K ±50, CRI 90, 3012 lm
 - 38W, 4,000°K ±50, CRI 80, 3700 lm
- INC/ELV/0-10V Universal dimming

Housing/Heat Sink

New Construction and Remodel

- 30°, 50° and 80° optics included
- Extruded aluminum heat sink and stamped aluminum arm with black anodized finish
- Aluminum housing with black powder coat finish

IC / Airtight

- 30°, 50° and 80° optics included
- Extruded aluminum heat sink with black anodized finish
- Aluminum housing

New Construction (Non-IC)



EDL5-NC Series

120-277V 38W Integral Driver, 50/60 Hz,
INC/ELV/0-10V Universal dimming

Remodel / Retrofit



EDL5-RM Series

120-277V 38W Integral Driver, 50/60 Hz,
INC/ELV/0-10V Universal dimming

IC / Airtight



EDL5-IC Series

120-277V 38W Integral Driver, 50/60Hz,
INC/ELV/0-10V Universal dimming





Eco-Downlight LED

5"
Trims

Materials

- Trim rings: Diecast aluminum
- Reflectors and baffles:
Spun aluminum and diecast aluminum

Finishes

- Standard Finishes:
White Powder-Coat, Satin Aluminum
- RAL color matching available
(consult factory)

Accessories

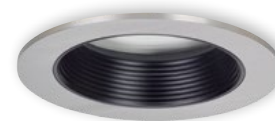
- Optional 10° optic available
- Round and square trimless rings
available



EDL5-1000 Series
Reflectors Clear Alzak,
Black Alzak, Haze, White



EDL5-2000 Series
Reflectors White,
Black, Haze



EDL5-1100 Series
Baffles White, Black



EDL5-2100 Series
Baffles White, Black



EDL5-1200
Shower Light



EDL5-2200
Shower Light

5" New Construction (Non-IC)

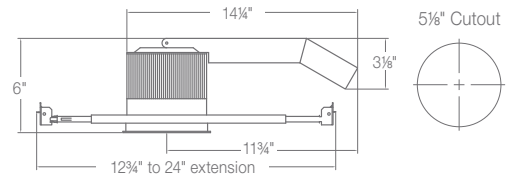
Fixture

- Integral 120-277V input LED Driver, 38W output, 85% efficient, 0.90 power factor
- UL/C-UL Listed for damp location



LEDs

- High-performance COB LEDs:
 - 38W, 2,700°K, ±50, CRI 90, 2,815 lm
 - 38W, 3,000°K, ±50, CRI 90, 3,012 lm
 - 38W, 3,500°K ±50, CRI 90, 3,012 lm
 - 38W, 4,000°K ±50, CRI 80, 3,700 lm
- 2-step binning process
- 50,000 hours at 70% lumen maintenance (L70)
- LM79 test results available at csllighting.com
- Compatible with INC (incandescent/triac), ELV and 0-10V dimmers
- Field-replaceable light engine and driver

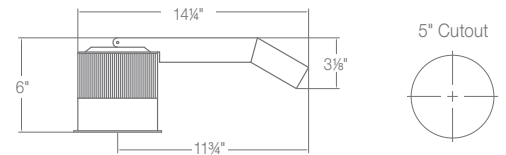


120-277V 38W Integral Driver

50/60 Hz, INC/ELV/0-10V Universal dimming

EDL5-NC-27-1	LED, 2,700°K ±50°K, CRI 90, 2,815 lm
EDL5-NC-30-1	LED, 3,000°K ±50°K, CRI 90, 3,012 lm
EDL5-NC-35-1	LED, 3,500°K ±50°K, CRI 90, 3,012 lm
EDL5-NC-40-1	LED, 4,000°K ±50°K, CRI 80, 3,700 lm

5" Remodel/Retrofit



120-277V 38W Integral Driver

50/60 Hz, INC/ELV/0-10V Universal dimming

EDL5-RM-27-1	LED, 2,700°K ±50°K, CRI 90, 2,815 lm
EDL5-RM-30-1	LED, 3,000°K ±50°K, CRI 90, 3,012 lm
EDL5-RM-35-1	LED, 3,500°K ±50°K, CRI 90, 3,012 lm
EDL5-RM-40-1	LED, 4,000°K ±50°K, CRI 80, 3,700 lm

Housing/Heat Sink

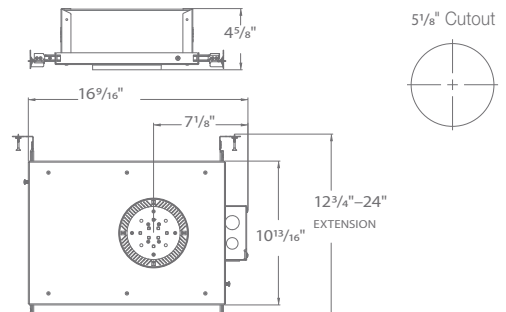
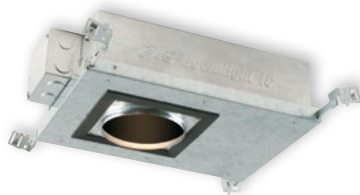
New Construction and Remodel

- Extruded aluminum heat sink and stamped aluminum arm with black anodized finish
- Aluminum housing with black powder-coat finish
- Includes black oxide-coated, heat-treated spring steel mounting clips
- 30°, 50° and 80° optics included
- Adjusts vertically to accommodate ceiling thicknesses from 1/2" to 1"
- Galvanized steel plaster frame, adjustable hanger bars (EDL5-NC only)
- Stamped aluminum junction box with two 1/2" trade-size knockouts

IC / Airtight

- Extruded aluminum heat sink with black anodized finish
- Aluminum housing
- 30°, 50° and 80° optics included
- Galvanized plaster frame, adjustable hanger bars
- Galvanized junction box with six 1/2" trade-size knockouts

IC/Airtight



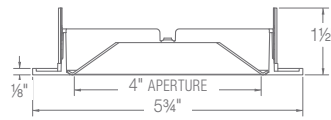
120-277V 38W Integral Driver

50/60 Hz, INC/ELV/0-10V Universal dimming

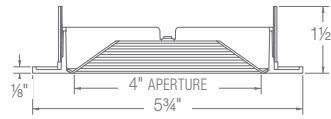
EDL5-IC-27-1	LED, 2,700°K ±50°K, CRI 90, 2,815 lm
EDL5-IC-30-1	LED, 3,000°K ±50°K, CRI 90, 3,012 lm
EDL5-IC-35-1	LED, 3,500°K ±50°K, CRI 90, 3,012 lm
EDL5-IC-40-1	LED, 4,000°K ±50°K, CRI 80, 3,700 lm

5" Round Trims

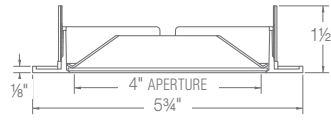
NUMBER	TRIM FINISH	REFLECTOR/BAFFLE
EDL5-1000-1	White	Clear Alzak Reflector
EDL5-1001-1	White	Black Alzak Reflector
EDL5-1002-1	Satin Aluminum	Clear Alzak Reflector
EDL5-1003-1	Satin Aluminum	Black Alzak Reflector
EDL5-1004-1	White	Haze Reflector
EDL5-1005-1	Satin Aluminum	Haze Reflector
EDL5-1006-1	White	White Reflector
EDL5-1100-1	White	White Baffle
EDL5-1101-1	White	Black Baffle
EDL5-1102-1	Satin Aluminum	Black Baffle
EDL5-1200-1	White	Shower Light



EDL5-1000 Series



EDL5-1100 Series



EDL5-1200

Materials

- Trim Rings: Diecast aluminum
- Reflectors and Baffles:
Round – Spun aluminum and diecast aluminum
Square – Diecast aluminum

Finishes

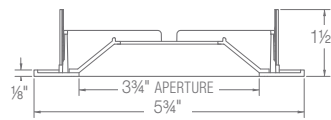
- Standard Finishes:
White Powder-Coat, Satin Aluminum
- RAL color matching available (consult factory)

Accessories

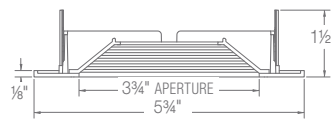
- Optional 10° optic available
- Round and square trimless rings available

5" Square Trims

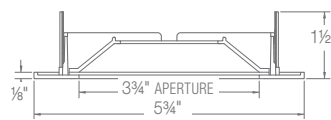
NUMBER	TRIM FINISH	REFLECTOR/BAFFLE
EDL5-2000-1	White	White Reflector
EDL5-2001-1	White	Black Reflector
EDL5-2002-1	White	Haze Reflector
EDL5-2003-1	Satin Aluminum	Black Reflector
EDL5-2004-1	Satin Aluminum	Haze Reflector
EDL5-2100-1	White	White Baffle
EDL5-2101-1	White	Black Baffle
EDL5-2102-1	Satin Aluminum	Black Baffle
EDL5-2200-1	White	Shower Light



EDL5-2000 Series



EDL5-2100 Series



EDL5-2200

5" Accessories

NUMBER	DESCRIPTION
EDL5-RD-TL	Round Trimless Ring
EDL5-SQ-TL	Square Trimless Ring
EDL5-10-OPTIC-1	10° Optic

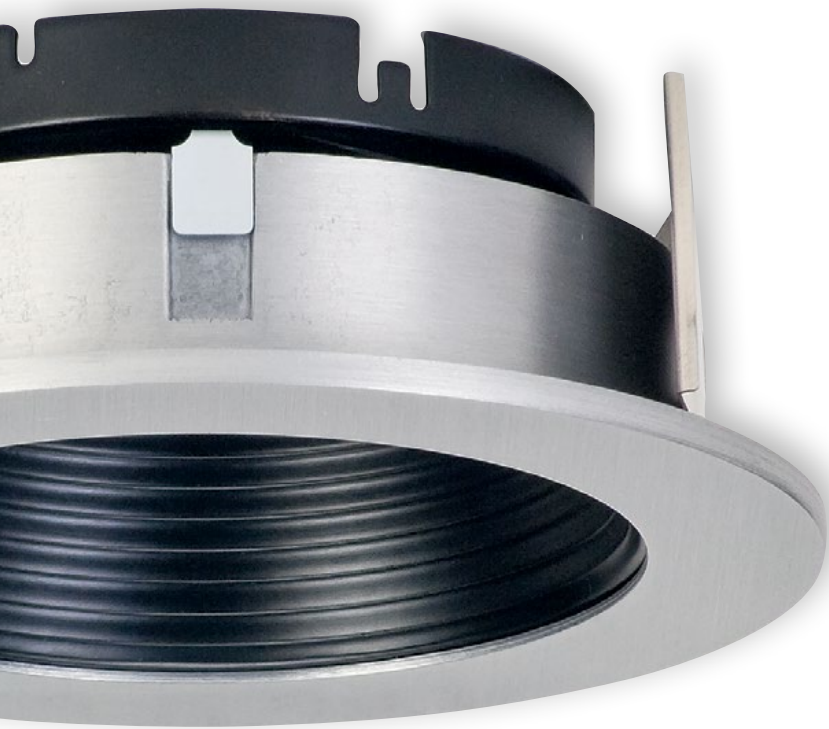
Details

5" Fixtures, Trims and Accessories



Eco-Downlight LED

3"
Recessed
Downlights



New Construction (Non-IC)



EDL-NC Series

120-277V 24W Integral Driver,
50/60 Hz, INC/ELV/0-10V
Universal dimming

Fixture

- High-performance COB LEDs:
 - 24W, 2,700°K ±50, CRI 90, 1900 lm
 - 24W, 3,000°K ±50, CRI 90, 2035 lm
 - 24W, 3,500°K ±50, CRI 90, 2186 lm
 - 24W, 4,000°K ±50, CRI 80, 2691 lm
- INC/ELV/0-10V Universal dimming

Housing / Heat Sink

New Construction (Non-IC) and Remodel / Retrofit:

- 30°, 50° and 80° optics included
- Extruded aluminum heat sink with black anodized finish
- Cold-rolled steel housing with black powder-coat finish

IC / Airtight / Adjustable:

- 30°, 50° and 80° optics included
- Suitable for insulated ceilings and airtight applications
- Adjustable, rotating heat sink:
 - Vertical aiming – up to 45° tilt
 - Horizontal aiming – 359° rotation
- Extruded aluminum heat sink with black anodized finish

Remodel / Retrofit



EDL-RM Series

120-277V 24W Integral Driver,
50/60 Hz, INC/ELV/0-10V
Universal dimming

IC / Airtight / Adjustable



EDL-ADJ Series

120-277V 24W Integral Driver,
50/60 Hz, INC/ELV/0-10V
Universal dimming



Eco-Downlight LED

3" Round Trims

Materials

- Trim rings: Diecast aluminum
- Reflectors and baffles: Spun aluminum

Finishes

- Standard Finishes: White Powder-Coat, Bronze, Satin Aluminum
- RAL color matching available (consult factory)

Accessories

- Optional 10° optic available
- Round trimless rings available



Adjustable



EDL-1000 Series

Reflectors Clear Alzak,
Black Alzak, Haze, Bronze, White



EDL-3000 Series

Adjust All
Lens Solite Glass



EDL-1100 Series

Baffles White, Black, Bronze



EDL-1300 Series

Adjust 0°-35°
Reflectors Clear Alzak,
Black Alzak, Haze, Bronze



EDL-1200

Shower Light



EDL-1400 Series

Adjust 0°-35°
Baffles White, Black, Bronze



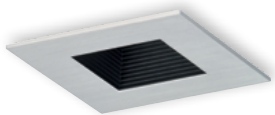
Adjustable



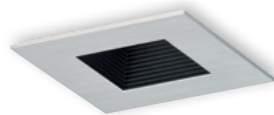
EDL-2000 Series
Reflectors
White, Black, Haze, Bronze



EDL-1500 Series
Adjusts 0-35°
Reflectors
White, Black, Haze, Bronze



EDL-2100 Series
Baffles White, Black, Bronze



EDL-1600 Series
Adjusts 0-35°
Baffles White, Black, Bronze



EDL-2200
Shower Light



EDL-4000 Series
Adjust All
Lens Solite Glass



Eco-Downlight LED

3"
Square
Trims

Materials

- Trim rings: Diecast aluminum
- Reflectors and baffles: Diecast aluminum

Finishes

- Standard Finishes: White Powder-Coat, Satin Aluminum, Bronze
- RAL color matching available (consult factory)


Accessories

- Optional 10° optic available
- Square trimless rings available

Details

3" Recessed Downlights

Fixture

- Integral 120-277V input LED Driver, 24W, 90% efficient, 0.99 power factor
- Emergency remote battery backup available
- UL/C-UL Listed for damp location 

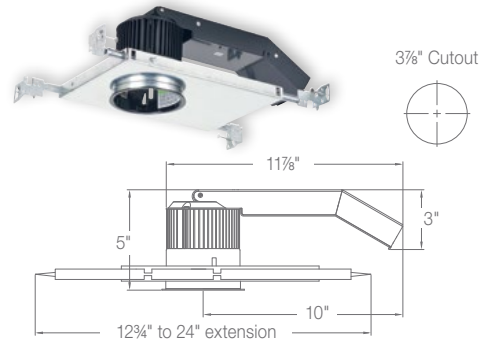
LEDs

- High-performance COB LEDs:
 - 24W, 2,700°K ±50, CRI 90, 1900 lm
 - 24W, 3,000°K ±50, CRI 90, 2035 lm
 - 24W, 3,500°K ±50, CRI 90, 2186 lm
 - 24W, 4,000°K ±50, CRI 80, 2691 lm
- 2-step binning process
- 50,000 hours at 70% lumen maintenance (L70)
- LM79 test results available at csllighting.com
- INC/ELV/0-10V Universal dimming.
- Field-replaceable light engine and driver

Housing/Heat Sink

- 30°, 50° and 80° optics included
- Extruded aluminum heat sink with black anodized finish
- Cold-rolled steel housing with black powder-coat finish
- Includes black oxide-coated, heat-treated spring steel mounting clips
- Adjusts vertically to accommodate ceiling thicknesses from ½" to 1"
- Galvanized steel plaster frame, adjustable hanger bars (EDL-NC only)
- Stamped aluminum junction box with two ½" trade-size knockouts

3" New Construction (Non-IC)

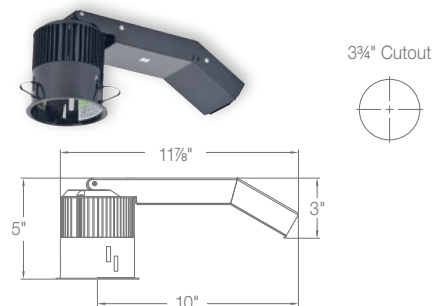


120-277V 24W Integral Driver

50/60 Hz, INC/ELV/0-10V Universal dimming

EDL-NC-27-4	LED, 2,700°K ±50°K, CRI 90, 1900 lm
EDL-NC-30-4	LED, 3,000°K ±50°K, CRI 90, 2035 lm
EDL-NC-35-4	LED, 3,500°K ±50°K, CRI 90, 2186 lm
EDL-NC-40-4	LED, 4,000°K ±50°K, CRI 80, 2691 lm

3" Remodel/Retrofit



120-277V 24W Integral Driver

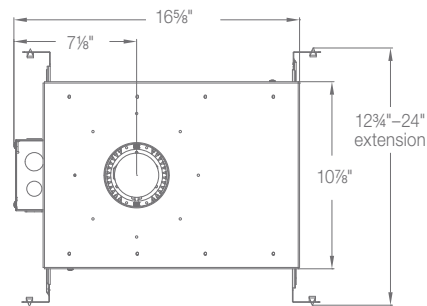
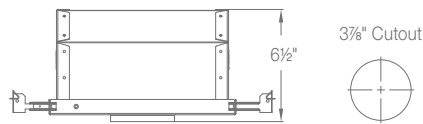
50/60 Hz, INC/ELV/0-10V Universal dimming

EDL-RM-27-4	LED, 2,700°K ±50°K, CRI 90, 1900 lm
EDL-RM-30-4	LED, 3,000°K ±50°K, CRI 90, 2035 lm
EDL-RM-35-4	LED, 3,500°K ±50°K, CRI 90, 2186 lm
EDL-RM-40-4	LED, 4,000°K ±50°K, CRI 80, 2691 lm

3" IC / Airtight / Adjustable



Cutaway view



120-277V 24W Integral Driver

50/60 Hz, INC/ELV/0-10V Universal dimming

EDL-ADJ-27-4	LED, 2,700°K ±50°K, CRI 90, 1900 lm
EDL-ADJ-30-4	LED, 3,000°K ±50°K, CRI 90, 2035 lm
EDL-ADJ-35-4	LED, 3,500°K ±50°K, CRI 90, 2186 lm
EDL-ADJ-40-4	LED, 4,000°K ±50°K, CRI 80, 2691 lm

Emergency Remote Battery Pack

for use with all 3" Eco-Downlight fixtures

EM-1000	25W LED Battery Pack
---------	----------------------

Fixture

- Integral 120-277V input LED Driver, 24W output, 90% efficient, 0.99 power factor
- UL/C-UL Listed for damp location

LEDs

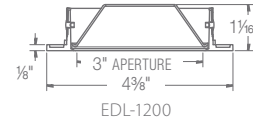
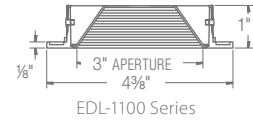
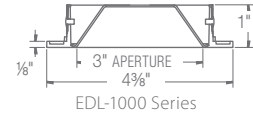
- High-performance COB LEDs:
 - 24W, 2,700°K ±50, CRI 90, 1900 lm
 - 24W, 3,000°K ±50, CRI 90, 2035 lm
 - 24W, 3,500°K ±50, CRI 90, 2186 lm
 - 24W, 4,000°K ±50, CRI 80, 2691 lm
- 2-step binning process
- 50,000 hours at 70% lumen maintenance (L70)
- LM79 test results available at cslighting.com
- Compatible with INC (incandescent/triac), ELV and 0-10V dimmers
- Field-replaceable light engine and driver

Housing/Heat Sink

- 30°, 50° and 80° optics included
- Suitable for insulated ceilings and airtight applications
- Adjustable, rotating heat sink:
 - Vertical aiming up to 45° tilt
 - Horizontal aiming 359° rotation
- Extruded aluminum heat sink with black anodized finish
- Galvanized steel airtight housing with adjustable hanger bars
- Accommodates ceiling thicknesses from 1/2" to 1"
- Galvanized junction box with six 1/2" trade-size knockouts

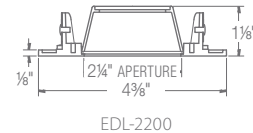
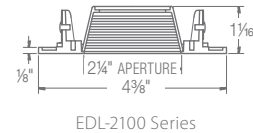
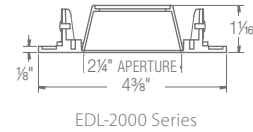
3" Round Trims

NUMBER	TRIM FINISH	REFLECTOR/BAFFLE
EDL-1000-4	White	Clear Alzak Reflector
EDL-1001-4	White	Black Alzak Reflector
EDL-1002-4	Satin Aluminum	Clear Alzak Reflector
EDL-1003-4	Satin Aluminum	Black Alzak Reflector
EDL-1004-4	White	Haze Reflector
EDL-1005-4	Satin Aluminum	Haze Reflector
EDL-1006-4	White	White Reflector
EDL-1007-4	Bronze	Bronze Reflector
EDL-1100-4	White	White Baffle
EDL-1101-4	White	Black Baffle
EDL-1102-4	Satin Aluminum	Black Baffle
EDL-1103-4	Bronze	Bronze Baffle
EDL-1200-4	White	Shower Light
EDL-1201-4	Satin Aluminum	Shower Light



3" Square Trims

NUMBER	TRIM FINISH	REFLECTOR/BAFFLE
EDL-2000-4	White	White Reflector
EDL-2001-4	White	Black Reflector
EDL-2002-4	White	Haze Reflector
EDL-2003-4	Satin Aluminum	Black Reflector
EDL-2004-4	Satin Aluminum	Haze Reflector
EDL-2005-4	Bronze	Bronze Reflector
EDL-2100-4	White	White Baffle
EDL-2101-4	White	Black Baffle
EDL-2102-4	Satin Aluminum	Black Baffle
EDL-2103-4	Bronze	Bronze Baffle
EDL-2200-4	White	Shower Light
EDL-2201-4	Satin Aluminum	Shower Light



Details

3" Trims and Accessories

3" Accessories

NUMBER	DESCRIPTION
EDL-RD-TL	Round Trimless Ring
EDL-SQ-TL	Square Trimless Ring
EDL-10-OPTIC-4	10° Optic



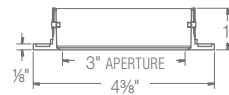
3" Round Trimless Ring



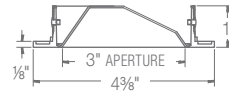
3" Square Trimless Ring

3" Round Adjustable Trims

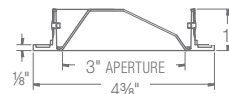
NUMBER	ADJUSTMENT	TRIM FINISH	REFLECTOR/ BAFFLE/LENS
EDL-3000-4	Adjust All	White	Solite Glass
EDL-3001-4	Adjust All	Satin Aluminum	Solite Glass
EDL-3002-4	Adjust All	Bronze	Solite Glass
EDL-1300-4	0°-35°	White	Clear Alzak Reflector
EDL-1301-4	0°-35°	White	Black Alzak Reflector
EDL-1302-4	0°-35°	Satin Aluminum	Clear Alzak Reflector
EDL-1303-4	0°-35°	Satin Aluminum	Black Alzak Reflector
EDL-1304-4	0°-35°	White	Haze Reflector
EDL-1305-4	0°-35°	Satin Aluminum	Haze Reflector
EDL-1306-4	0°-35°	White	White Reflector
EDL-1307-4	0°-35°	Bronze	Bronze Reflector
EDL-1400-4	0°-35°	White	White Baffle
EDL-1401-4	0°-35°	White	Black Baffle
EDL-1402-4	0°-35°	Satin Aluminum	Black Baffle
EDL-1403-4	0°-35°	Bronze	Bronze Baffle



EDL-3000 Series



EDL-1300 Series



EDL-1400 Series

Materials

- Trim rings: Diecast aluminum
- Reflectors and baffles:
Round – Spun aluminum and diecast aluminum
Square – Diecast aluminum

Finishes

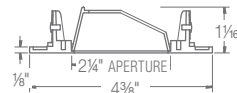
- Standard Finishes: White Powder-Coat, Satin Aluminum, Bronze
- RAL color matching available (consult factory)

Accessories

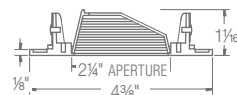
- Optional 10° optic available
- Round and square trimless rings available

3" Square Adjustable Trims

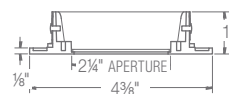
NUMBER	ADJUSTMENT	TRIM FINISH	LENS
EDL-1500-4	0°-35°	White	White Reflector
EDL-1501-4	0°-35°	White	Black Alzak Reflector
EDL-1502-4	0°-35°	White	Haze Reflector
EDL-1503-4	0°-35°	Satin Aluminum	Black Alzak Reflector
EDL-1504-4	0°-35°	Satin Aluminum	Haze Reflector
EDL-1505-4	0°-35°	Bronze	Bronze Reflector
EDL-1600-4	0°-35°	White	White Baffle
EDL-1601-4	0°-35°	White	Black Baffle
EDL-1602-4	0°-35°	Satin Aluminum	Black Baffle
EDL-1603-4	0°-35°	Bronze	Bronze Baffle
EDL-4000-4	Adjust All	White	Solite Glass
EDL-4001-4	Adjust All	Satin Aluminum	Solite Glass
EDL-4002-4	Adjust All	Bronze	Solite Glass



EDL-1500 Series



EDL-1600 Series



EDL-4000 Series



Eco-Downlight LED

1" Recessed Downlights

Fixture

- High-performance COB LEDs:
 - 14W, 2,700°K, ±50, CRI 90, 980 lm
 - 14W, 3,000°K, ±50, CRI 90, 1074 lm
 - 14W, 3,500°K ±50, CRI 90, 1157 lm
 - 14W, 4,000°K ±50, CRI 80, 1250 lm
- INC/ELV/0-10V Universal dimming

Housing/Heat Sink

New Construction (Non-IC) and Remodel/Retrofit:

- 30°, 50° and 80° optics included
- Extruded aluminum heat sink with black anodized finish
- Cold-rolled steel housing with black powder-coat finish

IC / Airtight / Adjustable

- 30°, 50° and 80° optics included
- Suitable for insulated ceilings and airtight applications
- Extruded aluminum heat sink with black anodized finish

New Construction (Non-IC)



EDLM-NC Series

120V-277V 14W
Integral Driver, 50/60 Hz,
INC/ELV/0-10V Universal
dimming

Remodel/Retrofit



EDLM-RM Series

120V-277V 14W
Integral Driver, 50/60 Hz,
INC/ELV/0-10V Universal
dimming

IC / Airtight / Adjustable



EDLM-IC Series

120V-277V 14W
Integral Driver, 50/60 Hz,
INC/ELV/0-10V Universal
dimming



Eco-Downlight LED

1"
Trims



EDLM-1000 Series

Reflectors Black Alzak, Haze, White,



EDLM-2000 Series

Reflectors Black Alzak, Haze, White,



EDLM-1100 Series

Baffles White, Black



EDLM-2100 Series

Baffles White, Black



EDLM-1200

Shower Light



EDLM-2200

Shower Light

Materials

- Trim rings: Diecast aluminum
- Reflectors and baffles: Spun aluminum

Finishes

- Standard Finishes: White Powder-Coat, Satin Aluminum
- RAL color matching available (consult factory)

Accessories°

- Optional 10° optic available
- Round and square trimless rings available



LED Steplights

Energy-Efficient
Passage Lighting



6" Diameter LED Steplights	2
4.75" Width LED Steplights	3
4.5"/4.75" Width LED Steplights	4
2.75" Width LED Steplights	6
3" Width LED Steplights	8
LED Steplights Details	9



CSL CSL LED Steplights, with clean, graceful designs, blend harmoniously with interior and exterior environments while providing energy-efficient illumination.

CSL LED Steplights offer superior style and efficacy in sustainable passage lighting featuring nine versatile profiles in three finishes, as well as high-performance, zero-maintenance Cree LEDs and integral drivers.



LED Steplights

6"
Diameter

Fixture

- Cree XP-E LEDs
2850°K \pm 100°K, 80 CRI
- Integral 120V input driver
- Diecast aluminum

Finishes

- Bronze
- Silver Metallic
- White



SS3000 Series

6W total consumption, 240 lm



4.75"
Width



SS3004 Series
3W total consumption, 120 lm



LED Steplights

4.5" / 4.75"
Width





SS3001 Series 4.5"W

3W total consumption, 120 lm

Fixture

- Cree XP-E LEDs
2850°K ±100°K, 80 CRI
- Integral 120V input driver
- Diecast aluminum

Finishes

- Bronze
- Silver Metallic
- White



SS3002 Series 4.5"W

3W total consumption, 120 lm



SS3005 Series 4.75"W

3W total consumption, 120 lm



LED Steplights

2.75"
Width





SS3006 Series

3W total consumption, 120 lm



SS3007 Series

3W total consumption, 120 lm

Fixture

- Cree XP-E LEDs
2850°K ±100°K, 80 CRI
- Integral 120V input driver
- Diecast aluminum

Finishes

- Bronze
- Silver Metallic
- White



SS3008 Series

3W total consumption, 120 lm



LED Steplights

3"
Width

Fixture

- Cree XP-E LEDs
2850°K ±100°K, 80 CRI
- Integral 120V input driver
- Diecast aluminum

Finishes

- Bronze
- Silver Metallic
- White



SS3003 Series

3W total consumption, 120 lm



Eco-Cove LED	2
Eco-Cove LED Details	4
Eco-Invizilite LED	6
Eco-Invizilite LED Details	8
PDQ LED Strip Lighting	10
PDQ Wet LED Strip Lighting	11
PDQ LED Strip Lighting Details	12
PDQ Wet LED Strip Lighting Details	13



CSL Linear LED Lighting is designed for functionality and engineered to surpass all others in the market for performance, reliability and environmental efficiency.

CSL Linear LED Lighting products meet the challenges of illuminating confined coves and restrictive spaces. Eco-Cove, Eco-Invizilite and PDQ Strip Lighting are powerful, flexible and adaptable, making it possible to place the light right where it's needed.

Energy-efficient, high-performance LEDs allow for more light with fewer power feeds, as well as a minimum of maintenance.



Eco-Cove LED

120V
Integrated
Linkable
Wet Location

Fixture

- Integrated 120V linkable system – no external remote transformers or drivers
- Warm White: 2,800°K, ±100, CRI 85
Natural White: 4,000°K ±100, CRI 80
- 10" fixture – 300 lm
20" fixture – 600 lm
- ELV dimmable
- Linkable up to 100'
- Adjustable – 120° total rotation

Housing/Heat Sink

- Brushed aluminum extruded heat sink
- Polycarbonate lens
- PVC driver housing
- Stainless steel mounting brackets



ECV-10 Series
120V 6W, 300 lm



ECV-20 Series
120V 12W, 600 lm

Eco-Cove LED

Power

- Integrated 120V linkable system – no external remote transformers or drivers
- Two sizes: 10.5" length, 21" length
- Linkable up to 100'
- UL/C-UL Listed for wet location (IP67)



LEDs

- Warm White: 2,800°K, ±100, CRI 85
Natural White: 4,000°K ±100, CRI 80
- Long life, low maintenance:
50,000-hour lamp life @ 70% Lumen maintenance (L70)
- Two sizes: 10.5" length – 6W, 300 lm
21" length– 12W, 600 lm
- Compatible with Electronic Low-Voltage (ELV) dimmers (consult factory for compliance)

Housing/Heat Sink

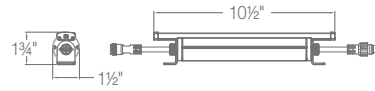
- Adjustable – 120° total rotation
- Brushed aluminum extruded heat sink
- Polycarbonate lens
- PVC driver housing
- Stainless steel mounting brackets



Adjustable
120° Total
Rotation

Details

Eco-Cove LED



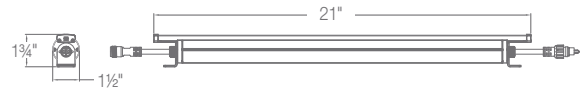
ECV-10 Series

10.5" l x 1.5" w x 1.75" h

6W, 300 lm, ELV dimmable

ECV-10-WW	Warm White 2,800°K, ±100, CRI 85
-----------	----------------------------------

ECV-10-NW	Natural White 4,000°K ±100, CRI 80
-----------	------------------------------------



ECV-20 Series

21" l x 1.5" w x 1.75" h

12W, 600 lm, ELV dimmable

ECV-20-WW	Warm White 2,800°K, ±100, CRI 85
-----------	----------------------------------

ECV-20-NW	Natural White 4,000°K ±100, CRI 80
-----------	------------------------------------

Connectors and Power Feed

NUMBER	LENGTH	DESCRIPTION
ECV-CON-1	1'	Connector
ECV-CON-5	5'	Connector
ECV-CON-10	10'	Connector
ECV-PWR-20	20'	Power Feed





Eco-Invizilite LED

Flexible
Concealed
Linear Lighting





Fixture

- Warm White: 1.5W, 2,800°K \pm 100°K, CRI 85, 90 lm per socket, Natural White: 1.5W, 4,000°K \pm 100°K, CRI 80, 105 lm per socket
- 24VAC/DC on-board driver
- 600W/25amp max.
- MLV dimmable
- Available with sockets installed at 3" or 4" O.C. in factory-cut, per-foot lengths, or in kits with 100'-cable lengths
- LED sockets easily removed or relocated

Cable

- Two-conductor black cable
- Flexible cable conforms easily to fit tight radii and sharp turns

Accessories

- Polycarbonate mounting track
- Aluminum reflector
- Frosted acrylic lens



INVLED Series

1.5W LED per socket
24VAC/DC on-board driver

Eco-Invizilite LED

Fixture

- Warm White: 1.5W, 2,800°K ±100°K, CRI 85, 90 lm per socket,
Natural White: 1.5W, 4,000°K ±100°K, CRI 80, 105 lm per socket
- 24VAC/DC on-board driver
- 600W/25amp max.
- MLV dimmable
- Available with sockets installed at 3" or 4" O.C. in factory-cut, per-foot lengths or in kits with 100'-cable lengths
- LED sockets easily removed or relocated
- UL/C-UL Listed for damp location

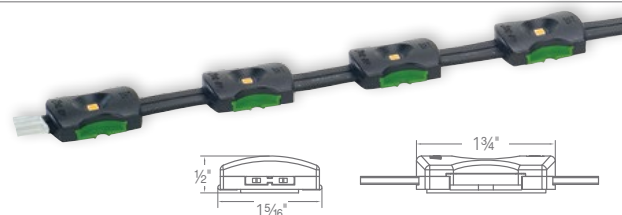


Cable

- Two-conductor black cable (proprietary patent pending)
- LED sockets pre-installed at 3" or 4" O.C.
- Flexible cable conforms easily to fit tight radii and sharp turns; lights confined coves and restrictive spaces
- Includes double sided tape and mounting ear
- Must install with: INVPW1 (or covered wire nuts) and INVDE1

Accessories

- Extruded clear polycarbonate mounting track with pre-drilled holes; sockets snap in easily without tools
- Powder-coated, formed aluminum reflector with pre-drilled holes (use with INVLED-EXT)
- Extruded frosted acrylic lens snaps easily onto track (INVLED-EXT) without tools



Cut-to-Length – per Foot

24VAC/DC on-board driver, 1.5W per socket

INVLED-3-WW	Warm White LED (2,800°K ±100K), 90 lm per socket, CRI 85	3" O.C.
INVLED-3-NW	Natural White LED (4,000°K ±100K), 105 lm per socket, CRI 80	
INVLED-4-WW	Warm White LED (2,800°K ±100K), 90 lm per socket, CRI 85	4" O.C.
INVLED-4-NW	Natural White LED (4,000°K ±100K), 105 lm per socket, CRI 80	

100-foot-length Kits

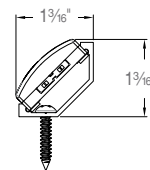
Pre-installed sockets, 4 power feeds, 4 dead ends, mounting screws
24VAC/DC on-board driver, 1.5W per socket

INVLED-3-WW-100	Warm White LED (2,800°K ±100K), 90 lm per socket, CRI 85	3" O.C.
INVLED-3-NW-100	Natural White LED (4,000°K ±100K), 105 lm per socket, CRI 80	400 sockets
INVLED-4-WW-100	Warm White LED (2,800°K ±100K), 90 lm per socket, CRI 85	4" O.C.
INVLED-4-NW-100	Natural White LED (4,000°K ±100K), 105 lm per socket, CRI 80	300 sockets



Mounting Track

INVLED-EXT 48" Extruded Mounting Track, Clear Polycarbonate,



45° Mounting Track

INVLED-EXT45 48" – 45° Mounting Track, Clear Polycarbonate



Reflector

INVLED-KICK-BK	48" Kick Reflector Powder-coated, Formed-Aluminum	Black
INVLED-KICK-BZ		Bronze
INVLED-KICK-WT		White



Lens

INVLED-LENS 48" Extruded Lens, Frosted Acrylic

Details

Eco-Invizilite LED

Eco-Invizilite LED Accessories

Terminal Block with Cover

1 1/4" l x 7/8" w x 1 3/16" h

- 30A terminal block with hinged lid
- 10 AWG max.
- Clear, high-grade polycarbonate
- Snaps into INV4STE, INV4WWE, INV4CE



INVPW1	Terminal Block with Cover
INVPW1-10	Terminal Block with Cover, 10-pack

End-Feed Wiring Compartment

4" l x 2 1/8" w x 1 3/4" h

- Joins connection from transformer to Eco-Invizilite cable within box at start of run
- 16-gauge galvanized steel
- Meets UL2108 UL Codes

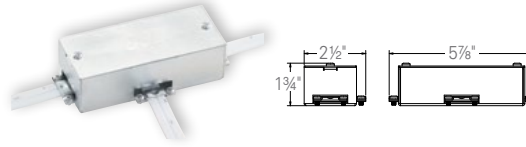


INWVC1	End-Feed Wiring Compartment
--------	-----------------------------

Metal Three-Way Wiring Compartment

5 7/8" l x 2 1/2" w x 1 3/4" h

- Multi-use wiring compartment for start of run, or for "L" or "T" connection within run
- 16-gauge galvanized steel
- Meets UL2108 UL Codes

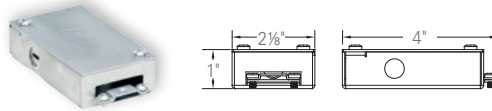


INWVC2	Metal Three-Way Wiring Compartment
--------	------------------------------------

Low-Profile Wiring Compartment

4" l x 2 1/8" w x 1" h

- Joins connection from transformer to Eco-Invizilite cable within box at start of run
- 16-gauge galvanized steel
- Low-profile, 1" high
- Meets UL2108 UL Codes

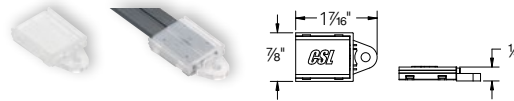


INWVC3	Low-Profile Wiring Compartment
--------	--------------------------------

Dead End Cap

1 7/16" l x 7/8" w x 1/4" h

- Dead end termination
- Snaps over end of cable without tools
- Double-sided tape and mounting ear with screw included for installation
- Clear, high-grade polycarbonate
- Snaps into INV4STE, INV4WWE, INV4CE

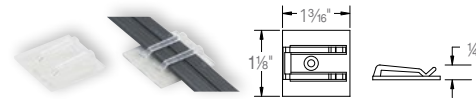


INVDE1	Dead End Cap
INVDE1-10	Dead End Cap, 10-pack

Cable Clip

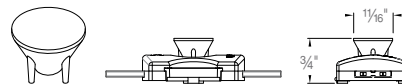
1 3/16" l x 1 1/8" w x 1/4" h

- Secures cable to surface between sockets set far apart
- Installs with pre-attached, double-sided tape, or screws down through pre-drilled screw hole
- Clear, high-grade polycarbonate



INVCL-10	Cable Clip, 10-pack
INVCL-100	Cable Clip, 100-pack

Optics



INVLED-OPTIC-25°
INVLED-OPTIC-65°
INVLED-OPTIC-85°

Magnetic Transformers

Multi-tap with primary and secondary internal circuit protection

T-119	150W	24V	E.I. laminated magnetic transformer	5 5/8" x 2 7/8" x 3"	7 lbs
T-121	300W	24V	E.I. laminated magnetic transformer	6 3/8" x 3 1/2" x 3"	10 lbs
T-123	600W	24V	E.I. laminated magnetic transformer	6 3/4" x 4 3/4" x 4 3/8"	15 lbs
T-125	300W	24V	Toroidal magnetic transformer	9" x 6" x 3 1/4"	17 lbs
T-127	600W	24V	Toroidal magnetic transformer	9" x 6" x 3 1/4"	24 lbs





PDQ LED

24VDC
Ultra-Compact
Indoor
Strip Lighting

System

- **High-output**
Warm White: 2,800°K \pm 100°K,
CRI 70, 225 lm per foot
Natural White: 4,100°K \pm 100°K,
CRI 65, 235 lm per foot
- **Standard-output**
Warm White: 2,800°K \pm 100°K,
CRI 70, 125 lm per foot
Natural White: 4,100°K \pm 100°K,
CRI 65, 135 lm per foot
- 24VDC system, onboard
constant-current driver
- 40' max. run length
- Available in 5' and 20' lengths
- MLV dimmable



PDQ24-H-I Series

24VDC High-output LEDs
3.65W per foot



PDQ24-S-I Series

24VDC Standard-output LEDs
2.30W per foot





PDQ WET LED

24VDC
Ultra-Compact
Wet Location
Strip Lighting

System

- **High-output**
Warm White: 2,800°K ±100°K,
CRI 70, 225 lm per foot
Natural White: 4,100°K ±100°K,
CRI 65, 235 lm per foot
- **Standard-output**
Warm White: 2,800°K ±100°K,
CRI 70, 125 lm per foot
Natural White: 4,100°K ±100°K,
CRI 65, 135 lm per foot
- 24VDC system, onboard
constant-current driver
- 20' max. run length
- Available in 5' and 20' lengths
- MLV dimmable



PDQ24-H-O Series

24VDC High-output LED
3.65W per foot



PDQ24-S-O Series

24VDC Standard-output LED
2.30W per foot

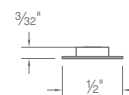
PDQ LED Indoor Strip Lighting

LEDs

- **High-output**
Warm White: 2,800°K ±100°K, CRI 70, 225 lm per foot
Natural White: 4,100°K ±100°K, CRI 65, 235 lm per foot
- **Standard-output**
Warm White: 2,800°K ±100°K, CRI 70, 125 lm per foot
Natural White: 4,100°K ±100°K, CRI 65, 135 lm per foot

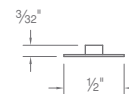
System

- 24VDC system, onboard constant-current driver:
High-output – 3.65W per foot
Standard-output – 2.30W per foot
- Dimmable with magnetic low-voltage (MLV) dimmer
- 40' max. run length
- Ultra-compact strip
- Available in 5' and 20' lengths
- Field-cutable with convenient markings every 4 inches
- Easy installation – 3M™ peel-n-stick adhesive pre-attached to strip
- UL/C-UL Listed for dry location



24VDC, High-output LEDs

PDQ24-H-I-20-WW	Warm White High-output LED (2,800°K ±100K), CRI 70	20'
PDQ24-H-I-20-NW	Natural White High-output LED (4,100°K ±100K), CRI 65	20'
PDQ24-H-I-5-WW	Warm White High-output LED (2,800°K ±100K), CRI 70	5'
PDQ24-H-I-5-NW	Natural White High-output LED (4,100°K ±100K), CRI 65	5'



24VDC, Standard-output LEDs

PDQ24-S-I-20-WW	Warm White Standard-output LED (2,800°K ±100K), CRI 70	20'
PDQ24-S-I-20-NW	Natural White Standard-output LED (4,100°K ±100K), CRI 65	20'
PDQ24-S-I-5-WW	Warm White Standard-output LED (2,800°K ±100K), CRI 70	5'
PDQ24-S-I-5-NW	Natural White Standard-output LED (4,100°K ±100K), CRI 65	5'

Details

PDQ LED

Connectors and Power Feed

For Standard- and High-output Indoor LEDs only

PDQ24-I-CON-1	1"	24VDC Connector
PDQ24-I-CON-6	6"	24VDC Connector
PDQ24-I-CON-12	12"	24VDC Connector
PDQ24-I-CON-24	24"	24VDC Connector
PDQ24-I-PWR-10	10'	24VDC Power Feed



Indoor Power Feed

PDQ LED Indoor Dimmable LED Drivers

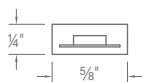
24VDC

D-133	20W Mag	24V	E.I. magnetic	5" x 2¼" x 2"	4 lbs
D-134	40W Mag	24V	E.I. magnetic	5" x 2¼" x 2"	4 lbs
D-135	60W Mag	24V	E.I. magnetic	6" x 2⅝" x 2¼"	4 lbs
D-136	100W Mag	24V	E.I. magnetic	6" x 2⅝" x 2¼"	5 lbs
D-137	150W Mag	24V	E.I. magnetic	7½" x 3" x 3"	7 lbs

PDQ LED Indoor Accessories

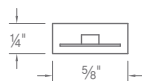
PDQ-CLIP-10	10-PACK PDQ24 Indoor Clips
-------------	----------------------------

PDQ LED Outdoor Strip Lighting



24VDC, High-output LEDs

PDQ24-H-O-20-WW	Warm White High-output LED (2,800°K ±100K), CRI 70	20'
PDQ24-H-O-20-NW	Natural White High-output LED (4,100°K ±100K), CRI 65	20'
PDQ24-H-O-5-WW	Warm White High-output LED (2,800°K ±100K), CRI 70	5'
PDQ24-H-O-5-NW	Natural White High-output LED (4,100°K ±100K), CRI 65	5'



24VDC, Standard-output LEDs

PDQ24-S-O-20-WW	Warm White Standard-output LED (2,800°K ±100K), CRI 70	20'
PDQ24-S-O-20-NW	Natural White Standard-output LED (4,100°K ±100K), CRI 65	20'
PDQ24-S-O-5-WW	Warm White Standard-output LED (2,800°K ±100K), CRI 70	5'
PDQ24-S-O-5-NW	Natural White Standard-output LED (4,100°K ±100K), CRI 65	5'

PDQ LED Outdoor LED Drivers

24VDC

D-133	20W Mag	24V	E.I. magnetic	5" x 2¼" x 2"	4 lbs
D-134	40W Mag	24V	E.I. magnetic	5" x 2¼" x 2"	4 lbs
D-135	60W Mag	24V	E.I. magnetic	6" x 2½" x 2¼"	4 lbs
D-136	100W Mag	24V	E.I. magnetic	6" x 2½" x 2¼"	5 lbs
D-137	150W Mag	24V	E.I. magnetic	7½" x 3" x 3"	7 lbs

PDQ LED Outdoor Accessories

PDQ-OD-SS-CLIP	Stainless steel mounting clip
----------------	-------------------------------

LEDs

- **High-output**
Warm White: 2,800°K ±100°K, CRI 70, 225 lm per foot
Natural White: 4,100°K ±100°K, CRI 65, 235 lm per foot
- **Standard-output**
Warm White: 2,800°K ±100°K, CRI 70, 125 lm per foot
Natural White: 4,100°K ±100°K, CRI 65, 135 lm per foot

System

- 24VDC system, onboard constant-current driver:
High-output – 3.65W per foot
Standard-output – 2.30W per foot
- Dimmable with magnetic low-voltage dimmer
- 20' max. run length
- Ultra-compact strip
- Available in 5' and 20' lengths
- 5' power feeds included with 5' lengths;
10' power feeds included with 20' lengths
- Field-cutable with convenient markings every 4 inches
- Stainless steel mounting clips available
- UL/C-UL Listed for wet location (IP67)



Details

PDQ LED Wet



CSL Task Lighting offers the latest technology combined with creative product design to deliver lighting solutions for undercabinet and work space needs.

CSL has long been a leader in task lighting solutions. Our innovative LED products and proven xenon and halogen models have made CSL the lighting solution for the office or residential work space. CSL's Task Lighting products reach beyond providing illumination by offering complete wiring, inter-connection and switching options.



Eco-Counter LED

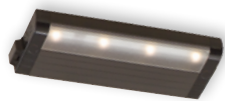
120V LED Task Lighting
Integrated
Linkable

Fixture

- Integrated 120V linkable system – no external remote transformers or drivers
- Warm White: 2,800°K, ±100, CRI 85
ELV dimmable
- SpeedLink system links a maximum of 24 units

Housing/Heat Sink

- Extruded aluminum body acts as a heat sink
- Low Profile – the $\frac{3}{4}$ " height makes it nearly invisible upon installation
- Special acrylic lens formulated for LED use
- Captive screws and SpeedLink™ technology (hardwire, portable, linkable) make for quick installation



ECL-8 Series
120V 6W LED



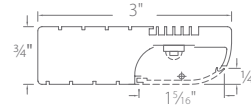
ECL-16 Series
120V 12W LED



ECL-24 Series
120V 16W LED

Eco-Counter LED

120V LED Task Lighting
Integrated
Linkable



ECO-Counter LED

120V input, on-board driver

	L X W X H	Diodes	Watts	Lumens	White – WT	Bronze – BZ	Satin Aluminum – SA
8"	8" x 3" x 3/4"	4	6	300	ECL-8-WT-D-1	ECL-8-BZ-D-1	ECL-8-SA-D-1
16"	16" x 3" x 3/4"	8	12	600	ECL-16-WT-D-1	ECL-16-BZ-D-1	ECL-16-SA-D-1
24"	24" x 3" x 3/4"	12	16	900	ECL-24-WT-D-1	ECL-24-BZ-D-1	ECL-24-SA-D-1

Details

Eco-Counter LED

Fixture

- Warm White 2,800°K ± 100°K
- 50,000 hour lamp life @ 70% lumen maintenance
- Integrated 120V system – no remote transformers or drivers.
- Dimming using an Electronic Low Voltage (ELV) dimmer
- Acrylic lens formulated for LED use
- No UV or infrared energy – objects will not discolor or fade over time
- Cool operating temperature
- 16" and 24" units offer direct hardwire option with romex and conduit
- Captive screws and SpeedLink™ technology (hardwire, portable, linkable) make for quick installation
- SpeedLink system links a maximum of 24 units
- On / Off switch
- UL/C-UL Listed for damp location
- Title 24-2008 and Energystar certification pending



Wiring Modules

- EWM-1 controls multiple units from one switch. The Wiring Module / Switch may be connected to the end of the Eco-Counter fixture or mounted in a more convenient location and connected to the fixture with a SpeedLink interlink cable.
- EWM-2 is a wiring module for use with Romex or flex conduit.
- EWM-3 is a wiring module for use with Romex or flex conduit. For through wiring. Two KO's and connectors



EWM-1 Wiring Module/Switch



EWM-2 Wiring Module

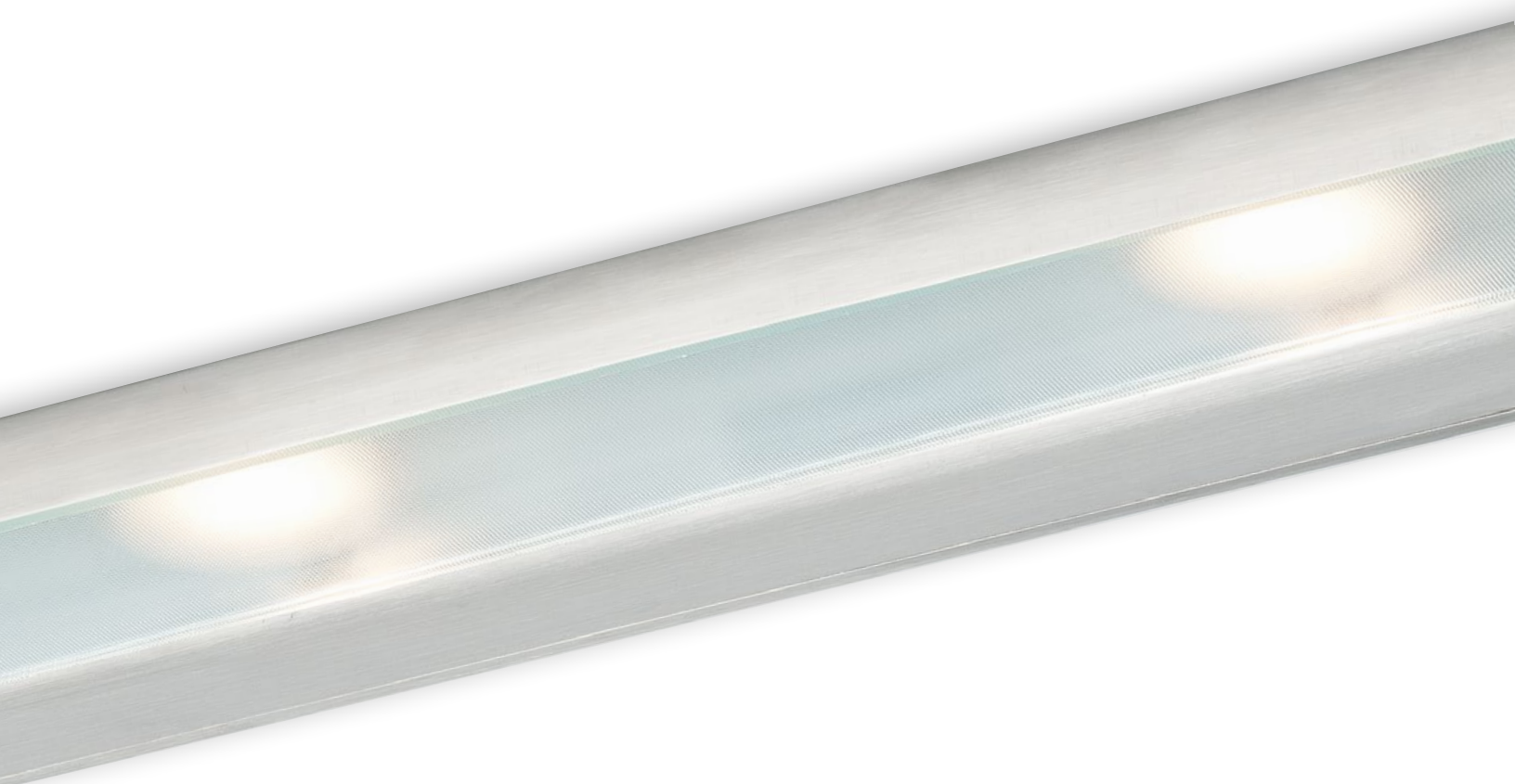


EWM-3 Wiring Module (for through wiring)

Wiring Modules

	L X W X H	White	Bronze	Satin Aluminum
Wiring Module/Switch	6" x 3" x 3/4"	EWM-1WT	EWM-1BZ	EWM-1SA
Wiring Module	3 1/2" x 3" x 3/4"	EWM-2WT	EWM-2BZ	EWM-2SA
Wiring Module for through wiring	6" x 3" x 3/4"	EWM-3WT	EWM-3BZ	EWM-3SA





CounterAttack LED

120V LED Task Lighting
Integrated
Linkable

Fixture

- 120v portable/hardwire
- 35,000 hour LED, 2,850k +/- 150k
- Dimmable with standard Incandescent dimmer (must meet minimum load of dimmer)
- Maximum of 120 LED light engines per power feed

Body

- Metal Construction
- Hinged, removable, UV coated, glass prismatic diffuser for maximum light distribution
- Trade-sized knockouts on back and top for through-wiring, wiremold, flex, romex or rigid conduit
- Internal connectors allow instant hardwiring without wire nuts
- On/Off switch
- UL/C-UL Listed for damp location

Finishes

- Bronze (BZ), Stainless Steel (SS) and White (WT)



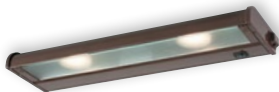
NCA-LED-8

120V 8" 1-4.5W Light Engine



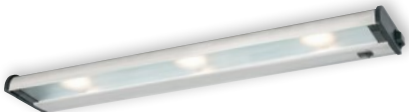
NCA-LED-16

120V 16" 2-4.5W Light Engines



NCA-LED-24

120V 24" 3-4.5W Light Engines



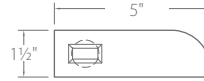
NCA-LED-32

120V 32" 4-4.5W Light Engines



CounterAttack LED

120V LED Task Lighting
Integrated
Linkable



CounterAttack LED

35,000 hour LED, 2,850k +/- 150k 120v portable/hardwire

	L X W X H	Lamps	Lumens	Type	White – WT	Bronze – BZ	Stainless Steel – SS
8"	8" x 5" x 1 1/2"	1	250	SPEED&LINK	NCA-LED-8-WT	NCA-LED-8-BZ	NCA-LED-8-SS
16"	16" x 5" x 1 1/2"	2	500	SPEED&LINK	NCA-LED-16-WT	NCA-LED-16-BZ	NCA-LED-16-SS
24"	24" x 5" x 1 1/2"	3	750	SPEED&LINK	NCA-LED-24-WT	NCA-LED-24-BZ	NCA-LED-24-SS
32"	32" x 5" x 1 1/2"	4	1000	SPEED&LINK	NCA-LED-32-WT	NCA-LED-32-BZ	NCA-LED-32-SS

Counter Attack LED

Fixture

- 120v portable/hardwire
- 35,000 hour LED, 2,850k +/- 150k
- Dimmable with standard Incandescent dimmer (must meet minimum load of dimmer)
- Maximum of 120 LED light engines per power feed

Finishes

- Bronze (BZ), Stainless Steel (SS) and White (WT)

Body

- Metal Construction
- Hinged, removable, UV coated, glass prismatic diffuser for maximum light distribution
- Trade-sized knockouts on back and top for through-wiring, wiremold, flex, romex or rigid conduit
- Internal connectors allow instant hardwiring without wire nuts
- On/Off switch
- UL/C-UL Listed for damp location



SpeedLink

- SpeedLink™ allows fast and easy linking of multiple units.
- Custom connectors allow end-to-end mounting with instant electrical connections – no wiring between units
- If not mounted end-to-end, SpeedLink™ inter-connect cables allow easy and fast linking.
- Master Switch module (CS-1) controls a run of CounterAttack SpeedLink™ with a single switch. Available in WT, BZ and SS.



End-to-End connections - standard CS-1 Master Switch Portable Cord and Plug

SpeedLink Accessories

See page 19 for more options.

	L X W X H	White	Bronze	Stainless Steel
Master Switch	5" x 3 3/4" x 1 1/2"	CS-1	CS-1BZ	CS-1SS
		White	Black	
Portable Cord	96"	PL-96 WT	PL-96 BK	





Mach120

120V Xenon Task Lighting
Linkable

Fixture

- 120V linkable system – no external remote transformers or drivers
- 35W/120V Long-life Xenon lamps included – dimmable with standard incandescent dimmer
- SpeedLink system links a maximum of 20 lamps

Body

- Extruded aluminum construction
- Bronze, Satin Aluminum and White finishes
- Glass prismatic diffuser for maximum light distribution
- Three power options – Hardwire, Interconnected with SpeedLink™ technology or Portable with cord and plug option



NMA120L-8
120V 8" 1-35W Xenon



NMA120L-16
120V 16" 2-35W Xenon



NMA120L-24
120V 24" 3-35W Xenon



NMA120L-32
120V 32" 4-35W Xenon



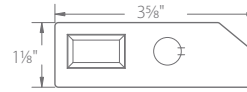
NMA120L-40 Series
120V 40" 5-35W Xenon



NMA120L-48
120V 48" 6-35W Xenon

Mach120

120V Xenon Task Lighting
Linkable



Mach120

120V 35W Xenon Lamps

	L X W X H	Lamps	White – WT	Bronze – BZ	Satin Aluminum – SA
8"	8" x 3 3/8" x 1 1/8"	1	NMA120L-8WT	NMA120L-8BZ	NMA120L-8SA
16"	16" x 3 3/8" x 1 1/8"	2	NMA120L-16WT	NMA120L-16BZ	NMA120L-16SA
24"	24" x 3 3/8" x 1 1/8"	3	NMA120L-24WT	NMA120L-24BZ	NMA120L-24SA
32"	32" x 3 3/8" x 1 1/8"	4	NMA120L-32WT	NMA120L-32BZ	NMA120L-32SA
40"	40" x 3 3/8" x 1 1/8"	5	NMA120L-40WT	NMA120L-40BZ	NMA120L-40SA
48"	48" x 3 3/8" x 1 1/8"	6	NMA120L-48WT	NMA120L-48BZ	NMA120L-48SA

Replacement Lamp 120V: **L-35** 35W Xenon Type JCD, G-8 Base Clear, 270 lumens, 2900°K

Details

Mach120

Fixture

- 120V linkable system – no external remote transformers or drivers
- 35W/120V Long-life Xenon lamps included – dimmable with standard incandescent dimmer
- Porcelain sockets
- 20 lamps maximum per power feed

Finishes

- Bronze (BZ), Satin Aluminum (SA) and White (WT)

Body

- Extruded aluminum construction
- Glass prismatic diffuser for maximum light distribution
- Knockouts on back for Romex, flex or rigid conduit – 1/2" MC connector included with each fixture
- SpeedLink option
- Internal connectors allow instant hardwiring without wire nuts
- Complete with mounting hardware
- On / Off switch
- UL/C-UL Listed for damp location

SpeedLink

- SpeedLink™ allows fast and easy linking of multiple units.
- Custom connectors allow end-to-end mounting with instant electrical connections – no wiring between units
- If not mounted end-to-end, SpeedLink™ inter-connect cables allow easy and fast linking.
- Master Switch module (NMS-1) controls a run of Mach 120 SpeedLink™ with a single switch. Available in WT, BZ and SA.



End-to-End connections - standard

NMS-1 Master Switch

Portable Cord and Plug

SpeedLink Accessories

See page 19 for more options.

	L X W X H	White	Bronze	Satin Aluminum
Master Switch	5 1/2" x 3 3/8" x 1 1/8"	NMS-1	NMS-1BZ	NMS-1SA
		White	Black	
Portable Cord	96"	PL-96 WT	PL-96 BK	







CounterAttack

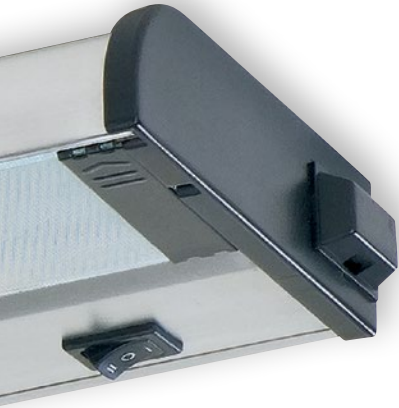
120V Xenon / Halogen
Linkable

Fixture

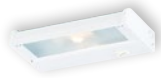
- 120V 35W Halogen non-linking and Xenon linking and non-linking versions
- 35W/120V lamps included – dimmable with standard incandescent dimmer
- Optional SpeedLink system links a maximum of 20 Xenon lamps

Body

- Metal construction – 1½" high
- Bronze, Stainless Steel and White finishes
- U.V. coated glass prismatic diffuser for maximum light distribution
- Patented cooling system promotes longer lamp life



NCA-120-8
120V 8" 1-35W Lamps



NCA-120-16
120V 16" 2-35W Lamps



NCA-120-24
120V 24" 3-35W Lamps



NCA-120-32
120V 32" 4-35W Lamps

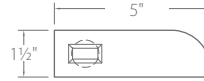


NCA-120-40
120V 40" 5-35W Lamps



CounterAttack

120V Xenon / Halogen
Linkable



CounterAttack

120V 35W Halogen & Xenon Lamps

	L X W X H	Lamps	Type	White – WT	Bronze – BZ	Stainless Steel – SS
8"	8" x 5" x 1½"	1	Halogen	NCA-120-8WT	NCA-120-8BZ	NCA-120-8SS
			Xenon	NCAX-120-8WT	NCAX-120-8BZ	NCAX-120-8SS
			SPEED&LINK	NCAX-120L-8WT	NCAX-120L-8BZ	NCAX-120L-8SS
16"	16" x 5" x 1½"	2	Halogen	NCA-120-16WT	NCA-120-16BZ	NCA-120-16SS
			Xenon	NCAX-120-16WT	NCAX-120-16BZ	NCAX-120-16SS
			SPEED&LINK	NCAX120L-16WT	NCAX120L-16BZ	NCAX120L-16SS
24"	24" x 5" x 1½"	3	Halogen	NCA-120-24WT	NCA-120-24BZ	NCA-120-24SS
			Xenon	NCAX-120-24WT	NCAX-120-24BZ	NCAX-120-24SS
			SPEED&LINK	NCAX120L-24WT	NCAX120L-24BZ	NCAX120L-24SS
32"	32" x 5" x 1½"	4	Halogen	NCA-120-32WT	NCA-120-32BZ	NCA-120-32SS
			Xenon	NCAX-120-32WT	NCAX-120-32BZ	NCAX-120-32SS
			SPEED&LINK	NCAX120L-32WT	NCAX120L-32BZ	NCAX120L-32SS
40"	40" x 5" x 1½"	5	Halogen	NCA-120-40WT	NCA-120-40BZ	NCA-120-40SS
			Xenon	NCAX-120-40WT	NCAX-120-40BZ	NCAX-120-40SS
			SPEED&LINK	NCAX120L-40WT	NCAX120L-40BZ	NCAX120L-40SS
Replacement Lamp 120V:			L-25 L-35	35W Halogen Type JCD G-8 Base Clear, 320 lumens, 2650°K 35W Xenon Type JCD, G-8 Base Clear, 270 lumens, 2900°K		

Details

CounterAttack

Fixture

- 120V 35W Halogen non-linking and Xenon linking and non-linking versions
- 35W/120V lamps included – dimmable with standard incandescent dimmer
- Porcelain sockets
- Maximum of 20 lamps per power feed

Finishes

- Bronze (BZ), Stainless Steel (SS) and White (WT)

Body

- Metal construction
- Hinged, removable, U.V coated, glass prismatic diffuser for maximum light distribution and easy lamp replacement
- Knockouts on ends (non-linking only), back and top for through-wiring, Wiremold, flex, Romex or rigid conduit
- Internal connectors allow instant hardwiring without wire nuts
- Captive mounting screws – fastest installation in undercabinet lighting (hardwire only)
- Hi-Off-Lo switch, dimmable
- UL/C-UL Listed for damp location

SpeedLink

- SpeedLink™ allows fast and easy linking of multiple units.
- Custom connectors allow end-to-end mounting with instant electrical connections – no wiring between units
- If not mounted end-to-end, SpeedLink™ inter-connect cables allow easy and fast linking.
- Master Switch module (CS-1) controls a run of CounterAttack SpeedLink™ with a single switch. Available in WT, BZ and SS.



End-to-End connections - standard

CS-1 Master Switch

Portable Cord and Plug

SpeedLink Accessories

See page 19 for more options.

	L X W X H	White	Bronze	Stainless Steel
Master Switch	5" x 3¾" x 1½"	CS-1	CS-1BZ	CS-1SS
Portable Cord	96"	White	Black	
		PL-96 WT	PL-96 BK	









End to end connection requires no wiring.



SpeedLink Interlink Cables



Portable Cord & Plug



Straight Connector



90° Connector



Cord connection for linking and portable cord

	Desc.	Black	White
Interlink Cables	10 inch	QL-10BK	QL-10WT
	18 inch	QL-18BK	QL-18WT
Portable Cord	96 inch	PL-96BK	PL-96WT
Straight Connector	Male	SL-M2M-BK	SL-M2M-WT
	Female	SL-F2F-BK	SL-F2F-WT
90° Connector	Male	SL-M2M-90-BK	SL-M2M-90-WT
	Female	SL-F2F-90-BK	SL-F2F-90-WT

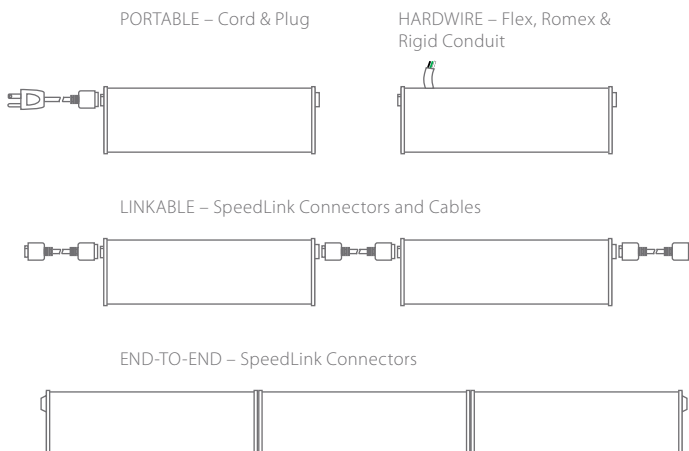


The SpeedLink System

- SpeedLink – fast and easy linking of multiple units
- Custom connectors that for end-to-end mounting with instant electrical connections – no wiring is required between units
- SpeedLink inter-connect cables allow easy and fast linking for non- end-to-end installation
- Two power feed options: hardwiring at any point along the run or cord and plug
- One power feed is required per run, up to the maximum number of lamps (20 lamps for 120 volt).

SpeedLink™

Linking Interconnect System





CounterAttack T5

T5 Fluorescent

CAF-16

1 x 8W T5 Fluorescent



CAF-24

1 x 13W T5 Fluorescent



CAF-40

2 x 8W
T5 Fluorescent





CounterAttack T5

120V T5 Fluorescent

	L X W X H	Watts	White – WT	Bronze – BZ	Silver Metallic – SM
16"	16" x 5" x 1½"	1 x 8W	CAF-16-WT	CAF-16-BZ	CAF-16-SM
24"	24" x 5" x 1½"	1 x 13w	CAF-24-WT	CAF-24-BZ	CAF-24-SM
40"	40" x 5" x 1½"	2 x 8W	CAF-40-WT	CAF-40-BZ	CAF-40-SM
Option	General Convenience Outlet		GCO-BK		GCO-WT

Fixture

- Cool operation, long-life, energy efficient
- T5 fluorescent lamps included
- Quiet – integral electronic ballast has no ballast hum
- Rapid start, no flickering, no starter

Finishes

- Bronze (BZ), Silver Metallic (SM) and White (WT)

Body

- Metal construction
- Fast easy installation – complete with mounting hardware
- Knockouts on ends, back and top for through-wiring, Wiremold, flex, Romex or rigid conduit
- Prismatic glass diffuser for smooth light distribution
- T5 fluorescent lamps included, no tools required for relamping
- On-Off switch
- Optional General Convenience Outlet (GCO)
- Protected by multiple US patents



CounterAttack T5

T5 Fluorescent



Abeo-XE

1" x 1"

12V & 24V Xenon

Fixture

- 5 watt, 10 watt or 20 watt, 12 volt— 150W max. or 24 volt— 300W max., G4 Xenon Bi-Pin lamps (sold separately)
- Requires remote electronic or magnetic transformers (sold separately)
- Dimmable – dimmer must match transformer requirements

Construction

- Extruded aluminum body
- Low Profile – 1" x 1"
- Frosted glass lens with silicone engagement grommet



XE-BK

Black



XE-SA

Satin Aluminum



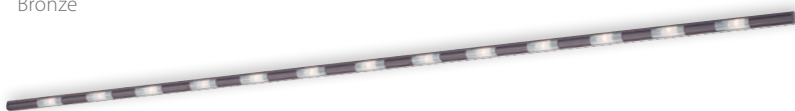
XE-WT

White



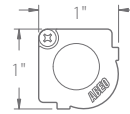
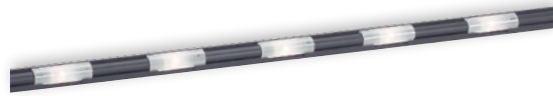
XE-BZ

Bronze



Abeo-XE

1" x 1"
12V & 24V Xenon



Abeo-XE
12V & 24V Xenon Lamp Fixtures

	L X W X H	Lamps	White – WT	Black – BK	Bronze – BZ	Satin Aluminum – SA
10"	10½" x 1" x 1"	1	XE-10-WT	XE-10-BK	XE-10-BZ	XE-10-SA
16"	16½" x 1" x 1"	2	XE-16-WT	XE-16-BK	XE-16-BZ	XE-16-SA
22"	22½" x 1" x 1"	3	XE-22-WT	XE-22-BK	XE-22-BZ	XE-22-SA
28"	28½" x 1" x 1"	4	XE-28-WT	XE-28-BK	XE-28-BZ	XE-28-SA
34"	34½" x 1" x 1"	5		XE-34-BK	XE-34-BZ	XE-34-SA
40"	40½" x 1" x 1"	6	XE-40-WT	XE-40-BK	XE-40-BZ	XE-40-SA
46"	46½" x 1" x 1"	7		XE-46-BK	XE-46-BZ	XE-46-SA
58"	58½" x 1" x 1"	9	XE-58-WT			XE-58-SA
70"	70½" x 1" x 1"	11	XE-70-WT	XE-70-BK	XE-70-BZ	
82"	82½" x 1" x 1"	13	XE-82-WT		XE-82-BZ	XE-82-SA
94"	94½" x 1" x 1"	15*	XE-94-WT		XE-94-BZ	XE-94-SA

* 24v only recommended for 15 lamp unit

Xenon Lamps

Voltage	5 watt – 60 lumens	10 watt – 125 lumens	20 watt – 250 lumens
12	L-160	L-105	L-161
24	L-108	L-109	L-162

All lamps Clear; G4 base; 2,650°K

Details

Fixture

Abeo-XE

- 5 watt, 10 watt or 20 watt, 12 volt— 150W max. or 24 volt— 300W max., G4 Xenon Bi-Pin lamps (sold separately)
- Requires remote electronic or magnetic transformers (sold separately)
- Dimmable – dimmer must match transformer requirements



No tools required for relamping. The frosted glass lens slides open to provide lamp access.



Terminal blocks are pre-installed at each end of the fixture for fast installation and linking without the use of wire nuts.

Finishes

- White (WT), Black (BK), Bronze (BZ), and Satin Aluminum (SA)

Construction

- Extruded aluminum body
- Low Profile – 1" x 1"
- Frosted glass lens with silicone engagement grommet
- Fast easy installation – complete with mounting hardware
- Speed snap conduit connectors



ABEO-90 Corner connector for 90° corners and attachment of flex conduit.

Abeo Accessories

	White	Black	Bronze	Satin Aluminum
90° Corner Connector	ABEO90-WT	ABEO90-BK	ABEO90-BZ	ABEO90-SA



Transformers

Electronic Transformers

Cat. No.	Wattage	Voltage	Description	Minimum Load	Dimensions	Weight
ELVT-IV2	60W	12V	Class 2 electronic transformer	10W w/o dimmer 20W w/ dimmer	1 ³ / ₁₆ " x 1 ⁵ / ₁₆ " x 2 ¹ / ₈ "	3 oz
T-30BK (Black)	60W	12V	Class 2 plug in electronic transformer	20W	1 ⁵ / ₁₆ " x 1 ¹ / ₂ " x 3 ³ / ₁₆ "	3 oz
T-30 (White)	60W	12V	Class 2 plug in electronic transformer	20W	1 ⁵ / ₁₆ " x 1 ¹ / ₂ " x 3 ³ / ₁₆ "	3 oz
T-14ENCL	150W	24V	Enclosed electronic transformer	50W	1 ⁷ / ₁₆ " x 1 ¹ / ₂ " x 6 ¹ / ₂ "	1 lb
T-16ENCL	300W	24V	Enclosed electronic transformer	50W	1 ⁷ / ₁₆ " x 1 ¹¹ / ₁₆ " x 9 ¹ / ₂ "	1.5 lbs

Magnetic Transformers

Cat. No.	Wattage	Voltage	Description	Dimensions	Weight
T-118	150W	12V	E.I. laminated magnetic transformer, multi-tap with primary and secondary internal circuit protection	5 ⁵ / ₈ " x 2 ⁷ / ₈ " x 3"	7 lbs
T-119	150W	24V	E.I. laminated magnetic transformer, multi-tap with primary and secondary internal circuit protection	5 ⁵ / ₈ " x 2 ⁷ / ₈ " x 3"	7 lbs
T-120	300W	12V	E.I. laminated magnetic transformer, multi-tap with primary and secondary internal circuit protection	6 ³ / ₈ " x 3 ¹ / ₂ " x 3"	10 lbs
T-121	300W	24V	E.I. laminated magnetic transformer, multi-tap with primary and secondary internal circuit protection	6 ³ / ₈ " x 3 ¹ / ₂ " x 3"	10 lbs
T-122	600W (2x300)	12V	E.I. laminated magnetic transformer, multi-tap with primary and secondary internal circuit protection	6 ³ / ₄ " x 4 ³ / ₄ " x 4 ³ / ₈ "	15 lbs
T-123	600W	24V	E.I. laminated magnetic transformer, multi-tap with primary and secondary internal circuit protection	6 ³ / ₄ " x 4 ³ / ₄ " x 4 ³ / ₈ "	15 lbs
T-124	300W	12V	Toroidal magnetic transformer, multi-tap with primary and secondary internal circuit protection	9" x 6" x 3 ¹ / ₄ "	17 lbs
T-125	300W	24V	Toroidal magnetic transformer, multi-tap with primary and secondary internal circuit protection	9" x 6" x 3 ¹ / ₄ "	17 lbs
T-126	600W (2x300)	12V	Toroidal magnetic transformer, multi-tap with primary and secondary internal circuit protection	9" x 6" x 3 ¹ / ₄ "	24 lbs
T-127	600W	24V	Toroidal magnetic transformer, multi-tap with primary and secondary internal circuit protection	9" x 6" x 3 ¹ / ₄ "	24 lbs

Abeo-XE

Transformers



Voltage Drop Chart

Use this chart to establish the correct wire gauge to minimize voltage drop at the specified wattage. The distance shown is the length of wire from the transformer to the first fixture in the run.

	< 5 feet	6 – 15 feet	16 – 20 feet	21 – 40 feet	41 – 60 feet	61 – 90 feet
12 Volt, 150 Watt	12 ga	8 ga	6 ga	4 ga	2 ga	1 ga
24 Volt, 300 Watt	14 ga	12 ga	10 ga	6 ga	6 ga	4 ga

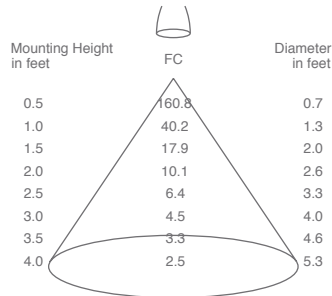


ProPuck

LED
20W 120V Xenon

ProPuck LED

CONE OF LIGHT DIAGRAM
(diameter shown is where fc value is half the fc at nadir)



	Black	Bronze	Satin Aluminum	White
ProPuck LED	PPL-BK	PPL-BZ	PPL-SA	PPL-WT
ProPuck Xenon	PP-BK-1	PP-BZ-1	PP-SA-1	PP-WT-1

4.5W LED system, 120 Volt

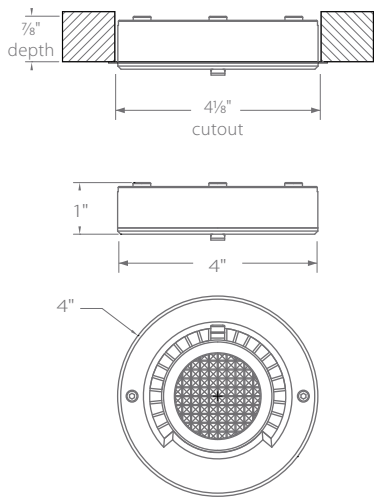
No transformer or drivers required

- High Power 4.5 Watt LED, 250lm, 4.5 Watt total consumption
- Color temperature, Warm White 2850°K ± 150°K
- Long lamp life: 35,000 hour lamp life @ 70% lumen maintenance.
- LED models may be linked with up to 100 units.
- Dimmable with standard Incandescent dimmer (must meet minimum load of dimmer).
- Solite lens included; additional accessory lenses available

Xenon system, 120 Volt

No transformer required

- 20 Watt / 120 Volt Xenon lamp, (7,000 hour rated)
- Xenon models may link up to 50 units
- Dimmable with standard Incandescent dimmer (must meet minimum load of dimmer).
- Included lens: Metal honeycomb. Additional accessory lenses available.



ProPuck LED and Xenon Features

- UL listed for portable & hardwire applications and as a wiring compartment; cUL when used with cUL strain relief
- Surface or recessed mount – not for recessed installation in ceilings or walls
- Complete with lamp, flange and clips for recessing, screws for surface mount and mini strain reliefs
- Dimmable with standard Incandescent dimmer (must meet minimum load of dimmer), LED and Xenon

Finishes

- Black (BK), Bronze (BZ), Satin Aluminum (SA) and White (WT)

Body

- Die cast aluminum construction for durability and excellent heat dissipation
- Hardwire knockouts on sides and back. Additional MC connectors available.
- Internal terminal block included, no wire nuts or connectors needed
- Integral mounting standoffs create an air-gap between fixture and mounting surface, minimizing heat transfer in surface mount applications.
- Multiple US patents pending



Accessory Lenses



0-19 Prismatic Spread



0-16 Mini Prismatic



0-18 Linear Spread



Part No.	Description
L-34A	20W 120V Frosted Xenon G8 150 lm, 7,000 hour rated life Fits only PP series



PP-CON	Flex conduit connector Fits up to 1/2" flex conduit Side knockout only
--------	--



INVWC3	Low profile wiring compartment 4"L 2 1/8"W 1"H
--------	---



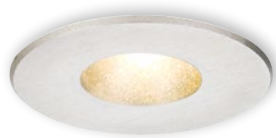
PP-PLG-BK	Black cord w/ plug, 6'
PP-PLG-WT	White cord w/ plug, 6'



PP-CRD-BK	Black linking cord – 10 ft.
PP-CRD-WT	White linking cord – 10 ft.
PP-CRD-100-BK	Black linking cord – 100 ft.
PP-CRD-100-WT	White linking cord – 100 ft.

ProPuck

Accessories



VLP-1000-SN



VLP-1001-SA



VLP-1002-SA



VLP-3000-SN

Bantam

LED Puck Lights

Fixture

- No visible hardware.
- Satin Nickel and Satin Aluminum finishes
- Die cast or machined aluminum housing.
- Recessed and surface mount fixtures.
- Suitable for cabinets and case goods.
- NOT for recessed installation in ceilings or walls.
- 2850°K ± 100° Cree XP-E, 80 CRI
- Remote driver; Triac dimming driver available

Driver #	Dimming	# of fixtures each driver can operate	
		VLP-1000 VLP-1001 VLP-1002	VLP-3000
D-121	No	1 to 10	1 to 3
D-122	No	3 to 18	1 to 6
D-123*	Yes/Triac	10 to 15	3 to 5

* Fixtures must be wired in series when using the D-123

Bantam

Description	Cat. No.	# of LEDs	Lumens	Wattage	Cutout	Dimensions
Mini Puck	VLP-1000-SN	1	80 lm	1.5 W	1 5/8"	1 5/16" dia x 5/8" h
Adjustable Puck - 10°	VLP-3000-SN	3	240 lm	4 W	2 1/4"	2 5/8" dia x 3/4" h
MiniCylinder	VLP-1001-SA	1	80 lm	1.5 W	1 1/8"	1 5/16" dia x 1 5/16" h
MiniCube	VLP-1002-SA	1	80 lm	1.5 W	1 1/8"	1 5/16" x 1 5/16" h

CAT. NO	PAGE	CAT. NO	PAGE	CAT. NO	PAGE
ABEO-90	24	NMA120L-40	11	T-16ENCL	25
CAF-16	20	NMA120L-48	11	T-30	25
CAF-24	20	NMA120L-8	11	UNVWC3	27
CAF-40	20	NMS-1	12	VLP-1000	28
CS-1	8, 16	PL-96	8, 12, 16, 19	VLP-1001	28
D-121	28	PP-1	26	VLP-1002	28
D-122	28	PP-CON	27	VLP-3000	28
D-123	28	PP-CRD	27	XE-10	24
ECL-16	3	PP-CRD-100	27	XE-16	24
ECL-24	3	PP-PLG	27	XE-22	24
ECL-8	3	PPL	26	XE-28	24
ELVT-IV2	25	QL-18	19	XE-34	24
EWM-1	4	QL10	19	XE-40	24
EWM-2	4	SL-F2F	19	XE-46	24
EWM-3	4	SL-F2F-90	19	XE-58	24
L-34A	27	SL-M2M	19	XE-70	24
NCA-120-16	15	SL-M2M-90	19	XE-82	24
NCA-120-24	15	T-118	25	XE-94	24
NCA-120-32	15	T-119	25		
NCA-120-40	15	T-120	25		
NCA-120-8	15	T-121	25		
NCA-LED-16	7	T-122	25		
NCA-LED-24	7	T-123	25		
NCA-LED-32	7	T-124	25		
NCA-LED-8	7	T-125	25		
NMA120L-16	11	T-126	25		
NMA120L-24	11	T-127	25		
NMA120L-32	11	T-14ENCL	25		



A Division of Troy-CSL Lighting, Inc.

14508 Nelson Avenue
City of Industry CA 91744
Tel: 626.336.4511
Fax: 626.330.4266
www.csllighting.com

