

User's Guide

PowerAlert® Network Management System

Software Version 12.04.0056

*Note: PowerAlert is not required to operate your UPS system.
For the latest PowerAlert updates, go to www.tripplite.com/software.*

IMPORTANT:

This User's Guide is for PowerAlert NMS Version 12.04.0056.

If you are installing PowerAlert Local or PowerAlert Network Shutdown Agent please refer to the User's Guides for those software packages.



1111 West 35th Street, Chicago, IL 60609 USA
www.tripplite.com/support

1. Pre-Installation Instructions

Tripp Lite's PowerAlert software family is separated into three distinct editions. This User's Guide applies to *PowerAlert Network Management System (PANMS)* Version 12.04.056. **Do not install more than one edition of PowerAlert on a single computer.**

PowerAlert Network Management System: This edition of PowerAlert should be installed by advanced users only. See Figure 1.1 for a list of major features available in PowerAlert Network Management System. Note that all the functions available through *PowerAlert Local* will be available for the remote devices and also for the host computer, including monitoring and controlling UPS systems connected to the host computer via local USB and/or serial connections. PowerAlert Network Management System requires the free Java Runtime Environment 1.6 or later.

Warning: Only one copy of PowerAlert Network Management System can be used per IP network subnet. You should obtain the approval of your network administrator before installation.

Feature	Comments
Manage multiple UPS systems on the network	Monitors hundreds* of SNMP-enabled Tripp Lite UPS Systems or PDUs.
Mass configuration	Allows mass configuration of PowerAlert Local software or SNMPWEBCARD firmware (version 12.04.0040 through 12.04.0055)
Autodiscovery of local devices	Supported
Autodiscovery of SNMP-enabled devices	Discovers SNMPWEBCARD firmware and PowerAlert Local software (version 12.04.0040 and above)
Mass Update	Allows multiple cards to have their firmware updated automatically.

Figure 1.1: PowerAlert NMS Key Features

* Actual Number of supported devices depends upon license, available memory and processor speed.

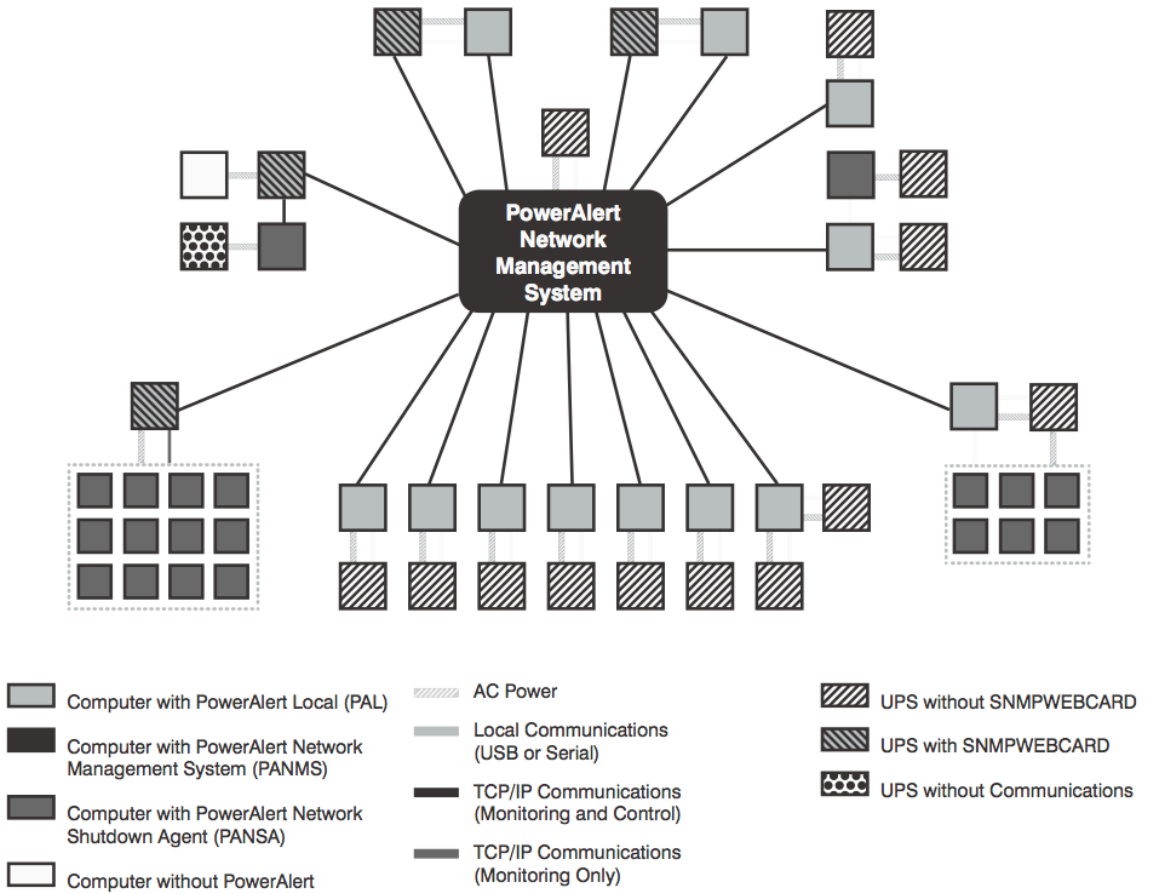


Figure 1.2: PowerAlert Network Topology Example

2. System Requirements for PANMS

For Windows® (Windows XP, Server 2003 R2, Vista, Server 2008, Windows 7 and 8):

- Pentium 4 CPU
- 512MB RAM
- Java Runtime Environment 1.6.0_4 or above
- TCP/IP (IPv4) network connection
- Available USB or serial port (optional)
- Open TCP/UDP ports 3664, 3665, 161 and 162 (any firewall)

For LINUX:

- Fedora 15, CentOS 6.3, and OpenSUSE 11
- Tripp Lite SNMPWEBCARD or supported PowerAlert Local system (12.04.0040 and above)
- Open TCP/UDP ports 3664, 3665, 161 and 162 (any firewall)
- Root user (required for installation)
- Supported local UPS with an RS232 interface (optional)

IMPORTANT: Ensure that you firewall has ports open for TCP and UDP communications. Failure to do so will result in incorrect operation of PANMS.

3. Installation

3.1 Windows Installation

Step 1 – Java Software Installation

IMPORTANT: Before installing PANMS, you MUST install Java Runtime Environment 6 or above. The latest version and installation instructions are available at www.java.com. Installation will fail if Java is not installed.

Step 2 – PANMS Software Installation - Windows

After installing the Java Runtime Environment, double-click the PowerAlert installer (setup.exe) and follow the on-screen prompts. The PowerAlert installer will attempt to uninstall previous versions of PowerAlert. Tripp Lite recommends uninstalling previous versions manually prior to installation via the control panel.

Windows 8 Users – Please Note

The installer will create a *PowerAlert Network Management System* tile on the Windows 8 start page. To launch the console, click on the tile. To manually pin the console to the Start Page, right-click on the *Start* page background, select *All Apps* and then right-click on the *PowerAlert Console* tile and selecting *Pin to Start*. Thereafter, click on the *PowerAlert Console* tile on the Start page to launch the console.

Warning: Do not install more than one edition of PowerAlert on a single computer. Do not install PowerAlert Network Management System without first obtaining the approval of your network administrator.

3.2 Linux Installation

Step 1 – File Installation

Copy the appropriate software file to your local machine and enter the following as *root*:

```
rpm -i <rpm-file-name> [--nodeps].
```

Use the RPM manpage to help you through any installation issues.

Step 2 – Daemon/Service Installation

PowerAlert will install to the directory `/var/tripplite/poweralert`, and will locate the daemon/service process for PANMS within `/var/tripplite/poweralert/engine/panmsd`.

To control the status parameters and actions of each daemon/service, type `./panmsd` from the `/etc/init.d` directory.

Step 3 – Java Console Installation

The Java consoles for PowerAlert Network Management System are located in `/var/tripplite/poweralert/console` as `panms_console.sh`.

To launch a console, type `./panms_console.sh` from the `/var/tripplite/poweralert` console directory in a terminal.

4. Uninstalling Software (Linux)

Note: Uninstalling software requires root access.

- To uninstall any application using Fedora, type `rpm -e panms`
- To uninstall any application using OpenSUSE, type `rpm -e opensuse-panms`

5. PANMS Operation

5.1 Introduction

PowerAlert Network Management System is for advanced users only. PowerAlert Network Management System can monitor and control up to 250 SNMP-enabled devices, including UPS systems with an SNMPWEBCARD*, UPS systems that appear on the network via PowerAlert Local (or previous versions of PowerAlert*) and network-enabled PDUs*. All the functions available through the PowerAlert Local console (See the User Guide for PowerAlert Local for details) will be available for the remote devices and also for local devices that are directly connected to the host computer.

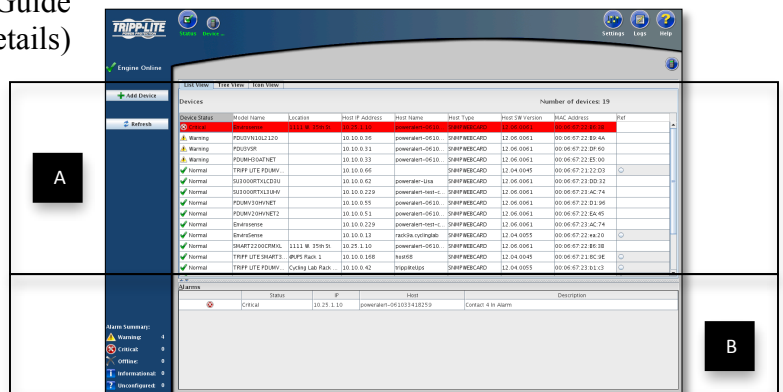


Figure 5.2.1 – Management Console

Warning: Only one copy of PowerAlert Network Management System can be used per IP network subnet.

*Software or firmware version 12.04.0040 and above.

5.2 Management Console

PowerAlert Network Management System’s primary monitoring and control interface is the management console (Figure 5.2.1), which can be viewed either as a list (Figure 5.2.2), a tree (5.2.3) or an icon view (5.2.4). All manageable devices found during the discovery process (up to 250 in the free version of PowerAlert NMS) are listed in the device table A. Click any of the column headings to sort the table by the data in that column; click again to reverse the sort.

The “Status” column of the device table displays an icon that represents the device status. (If the device has more than one alarm, the icon for the most serious alarm is shown.) The row’s color reflects the device status: Normal=White, Critical=Red, Warning=Yellow, Information=Light Blue, Offline/Unreachable=Light Gray.

Devices Number of devices: 36

Device Status	Device Name	Model Name	Location	Host IP Address	Host Name	Host Type	Host SW Version	Ref
Critical	Device 2@10.20.0.54	SU3000RTXL3UHV		10.20.0.54	poweralert-061033...	SNMPWEBCARD	12.06.0062	
Critical	Device 1@10.20.0.63	SUJINT3000RTXL2U	Where Am I	10.20.0.63	tripliteUps	SNMPWEBCARD	12.04.0055	
Warning	Device 1@10.20.0.8	PDUH15AT		10.20.0.8	jhonson.tsoftware...	SNMPWEBCARD	12.06.0062.0999...	
Warning	Device 1@10.20.0.57	PDUH20AT		10.20.0.57	biged.tsoftwarede...	SNMPWEBCARD	12.06.0062.0999...	
Warning	Device 3@10.20.0.5	PDUH30ATNET		10.20.0.5	my50card.tsoftwa...	SNMPWEBCARD	12.06.0062.0994...	
Warning	Device 1@10.20.0.25	PDUH30ATNET		10.20.0.25	poweralert-061033...	SNMPWEBCARD	12.06.0061	
Warning	Test PDU	PDUHV30NET	cycle lab	10.20.0.22	poweralert-061033...	SNMPWEBCARD	12.06.0061	

Alarms

Status	IP	Host	Description
Warning	10.20.0.13	poweralert-06103351029...	Secondary Source Not Present
Info	10.20.0.2	tripliteUps	Battery Age Above Threshold

Figure 5.2.2 – List View

Rows that change from normal to an alarm status will move to the top of the table automatically. You can right-click the device row and Choose “Acknowledge Alarm” to remove the alarm status from the row and restore the previous sort order. The alarm icon will remain unchanged until the device reports that the alarm has cleared. You can see additional alarm detail about the highlighted device, including separate listings of multiple alarms, in the “Alarms” Section **B** of the management console.

The “Device Name,” “Model Name,” and “Location” columns display model information reported by the device. The “IP address” column of the device table displays the IP address assigned to the SNMPWEBCARD or the computer that is connected to the device.

Devices (19)

- Local
- TRIPP LITE PDUHV30NET@10.10.0.66
- TRIPP LITE SMART3000RM2U@10.10.0.168
- PDUHV20HNET@10.10.0.62
- SU3000RTXCD3U@10.10.0.62
- SMART2200CRANKL@10.25.1.10
- Envirosense@10.25.1.10
- PDU3VH0L210@10.10.0.36
- SU3000RTXCD3U@10.10.0.55
- PDUHV30HNET@10.10.0.55
- PDU3VSP@10.10.0.31
- PDUH30ATNET@10.10.0.33
- PDUHV20HNET@10.10.0.51
- PDUHV20HNET@10.10.0.38
- PDUHV30HNET@10.10.0.61
- PDUHV20HNET@10.10.0.229
- SU3000RTXL3UH@10.10.0.229
- Envirosense@10.10.0.229
- Envirosense@10.10.0.23
- TRIPP LITE PDU3VSP@10.10.0.13
- TRIPP LITE PDUHV30NET@10.10.0.42
- TRIPP LITE PDU3VH@10.10.0.30
- TRIPP LITE PDUHV20HNET@10.10.0.31

Alarms

Status	IP	Host
--------	----	------

Figure 5.2.3 – Tree View

An SNMPWEBCARD connected to an ENVIROSENSE environmental sensor or a computer connected to two UPS systems will show two devices with the same IP address, but other devices will each have a unique IP address. Any devices connected directly to the PowerAlert Network Management System host computer will show “localhost” in the IP address column. The “Host Type” column displays whether the device appears on the network via SNMPWEBCARD or PowerAlert software (i.e. card or PC). The “Version” column shows the firmware or software version number.

Right-click any device listed in the device table and select ‘View Device’ to open a separate PowerAlert console for that device. If the device appears on the network through PowerAlert or a previous version of PowerAlert software, the PowerAlert console for that device will open in a console window (one Java console at a time). If the device is an SNMPWEBCARD or network-enabled PDU, a Web browser will launch and connect to the device’s PowerAlert console. You can use each device’s separate PowerAlert console to access all the monitoring and control features of the device.

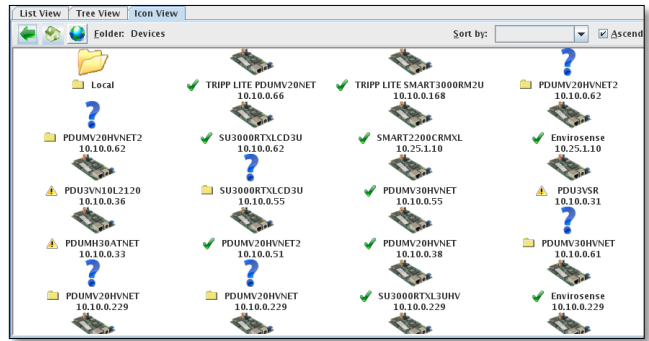


Figure 5.2.4 – Icon View

IMPORTANT SECURITY NOTE: If you have disabled launching Java applets in your web browser, ensure that you have installed the Java console launcher for your version of the SNMPWEBCARD. Refer to the Release Notes included in the firmware release bundle (or CD) of your SNMPWEBCARD for information on how to install the console launcher.

5.3 Device Addition and Removal

Delete a device from the device table by right-clicking the device row and selecting “Remove device” from the pop-up menu as show in Figure 5.3.1. Add devices by clicking the “Add Device” button located in the upper left section of the management console window. Select whether you want to discover a local device or a remote device in the “Add a Device” pop-up window (Figure 5.3.2).

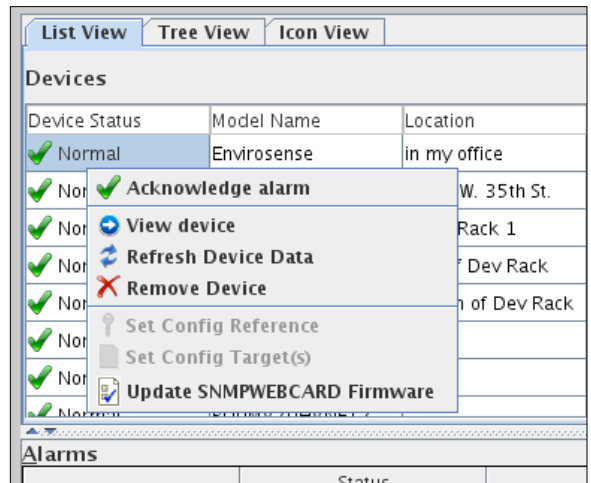


Figure 5.3.1 – Right-click Menu

When you choose to discover a remote device, the “Add Network Devices” window appears (Figure 5.3.3). Network device discovery can search the entire local subnet* if you enter an asterisk in the last octet of the IP address (192.168.1.*), or it can search specific IP addresses. Click the “Add to list” button after entering each IP address. Next, add the community strings for the SNMPWEBCARD devices that will be searched.

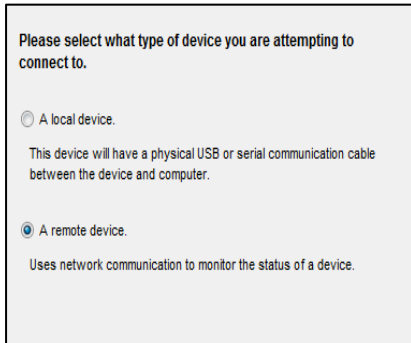


Figure 5.3.2 – Add Device

If you enter a specific IP address, and the device is not discoverable, you'll see a message stating that a device could not be found. PowerAlert Network Management System searches for devices that appear on the network via SNMPWEBCARD firmware, PowerAlert Local or previous versions of PowerAlert (12.04.0019 and above), but it does not search for PowerAlert Network Shutdown Agent. PANMS automatically configures the following agents to send SNMP notifications to PowerAlert Network Management System:

The default community string for SNMPWEBCARD firmware 12.04.0040 or later is “tripplite”. Click the “Add to list” button after entering each community string. After entering all the required information, initiate the discovery process by clicking the “OK” button. A progress bar and numeric display will indicate the number of nodes discovered, and newly discovered devices will be added to the device table.

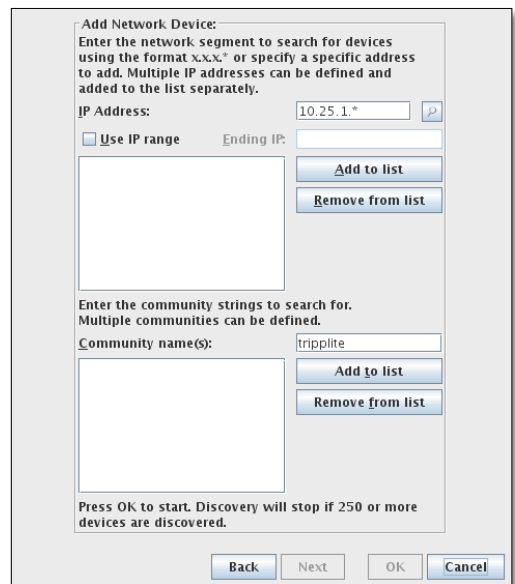


Figure 5.3.3 Add Network Devices

- SNMPWEBCARD Firmware Version 12.04.0048 and above
- SNMPWEBCARD Firmware Version 12.04.0045
- SNMPWEBCARD Firmware Version 12.04.0040
- PowerAlert Local 12.04.0040 and above
- PowerAlert Software 12.04.0019 and above: The following agents will be discovered, but require manual configuration to send SNMP notifications to PowerAlert Network Management System:
 - *SNMPWEBCARD Firmware Version 12.04.0019*
 - *SNMPWEBCARD Firmware Version 12.04.0030*
 - *SNMPWEBCARD Firmware Version 12.04.0032*
 - *SNMPWEBCARD Firmware Version 12.04.0034*

When PowerAlert Network Management System discovers a device that requires manual configuration, it appears in the device table with a “?” status icon, indicating an un-configured device alarm. See **5.6 Clearing Unconfigured Device Alarms** for manual configuration instructions.

*Discovery searches the local IP subnet only (Class C). If the IP network is not a Class C network (192.0.0.0 through 223.255.255.255) a pop-up window will indicate that the discovery process can only be performed on a class C network.

5.4 SNMPWEBCARD Firmware

Launch the Application

If the SNMPWEBCARD Mass Update tool is installed on your PANMS workstation, right-clicking on the SNMPWEBCARD listed on the PANMS Console and selecting “Update SNMPWEBCARD Firmware” will launch the Update Console. **Note: The Mass Update tool is not available on all operating systems.**

NOTE: To update multiple SNMPWEBCARDS at once, hold down the Control button on the keyboard, then right-click on any of the selected cards.

Status	Device Name	IP Address	Location	Software Version	Card ID
Normal	Envirosense	10.10.0.229			powe...
Normal		10.10.0.13	rack9		
Normal		10.25.1.10	35th St.		powe...
Normal		10.10.0.168	k 1		host6...
Normal		10.10.0.42	b Rack ...		trippi...
Normal		10.10.0.21	b Rack 7		trippi...
Normal		10.10.0.38	b Rack 7		powe...
Normal	TRIPP LITE PDU3VSR	10.10.0.14	Cycling Lab Rack 9		trippi...
Normal	TRIPP LITE PDU3VN	10.10.0.30	Cycling Lab Rack 9		trippi...
Normal	TRIPP LITE PDU3VSR	10.10.0.12	Cycling Lab Rack 9		rack9...

Figure 5.4.1 – Updating a Card

Equipment Menu

This menu displays the list of SNMPWEBCARDS that have been selected for version update.

In this menu, the user can add, edit, or remove one or more SNMPWEBCARDS. The “Set Global Password” button on this screen allows the user to set the username and password for all the SNMPWEBCARDS in one step.

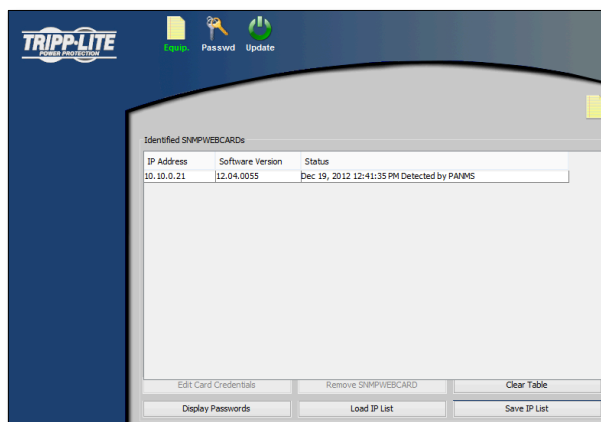


Figure 5.4.2 – Equipment Menu

If each card has a different username and/or password, the user must manually edit each card to add the username and/or password info.

NOTE: The Update tool refers to these username/passwords when performing the version update. Setting the global password in this menu does not change the card login authentication. It is only used during the update process.

Password Menu

This menu is used for updating the administrative username and/or password for the SNMP- WEBCARDS listed on the Equipment Menu. The default username and password must be defined to begin the update process.

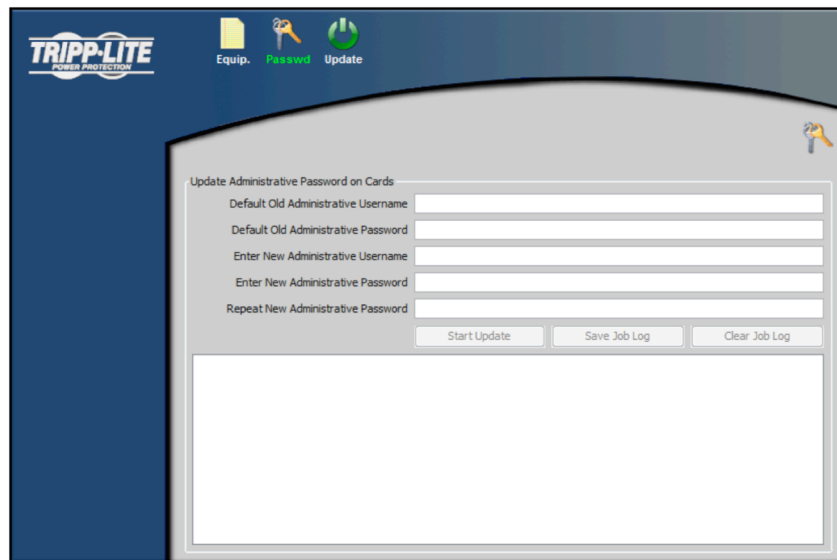


Figure 5.4.3 – Password Menu

*NOTES: Only cards of version 12.04.0048 and later support username change. All other SNMPWEBCARDS have fixed administrative user name “admin” and can only have their password updated. **Set Global Username/Password is incompatible with Version 12.06.0060 or later of SNMPWEBCARD.***

Update Menu

This menu is used for SNMPWEBCARD version updates. Figure 5.4.4 shows the configuration for updating SNMPWEBCARDS to Version 12.06.0060 or later.

When updating to Version 12.04.0055 or earlier, please do not rename the image file and driver file: only the original names are recognized by the application. Also make sure the image version chosen is correct. Choosing the wrong version may cause the card(s) to end in an inoperable state.

IMPORTANT: SNMPWEBCARDS running versions before 12.04.0048 (using original hardware), cannot be upgraded to version 048 or above. Also, SNMPWEBCARDS using version 12.04.0048 or later cannot be downgraded below 12.04.0048.

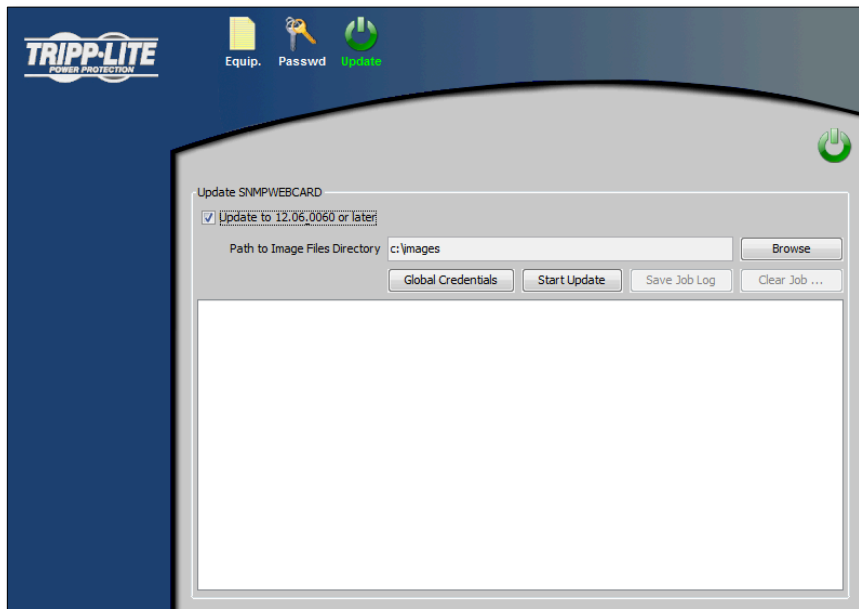


Figure 5.4.4 – Update Menu

If an SNMPWEBCARD does not have username and password on the Equipment screen, and the username and password are not defined on this menu, manufacturing defaults will be used. If the username and password do not match the actual username and password of a SNMPWEBCARD, the SNMPWEBCARD will not be updated.

Important: You must enter Administrator and FTP credentials (including port #) for Version Updates to occur. This can be done globally by selecting the “Global Credentials” button or on the Equipment Menu by selecting the “Edit Device Credentials” button. If FTP is turned off on the card the Mass Updater will automatically enable FTP during the update process and disable it at the completion of the update process.

NOTE: If necessary, the update process will try to query its version from the SNMPWEBCARD. If the query fails and the SNMPWEBCARD version cannot be determined, this SNMPWEBCARD will not be updated. After the version update process is complete, the card version on the PANMS Console will update.

5.5 Mass Configuration

Mass configuration allows you to create a global device configuration that you can apply to all compatible devices listed in the device table. **Important: Devices with software or firmware versions prior to 12.04.0040 and later than 12.04.0055 do not support mass configuration.**

Step 1 - Configure Reference Source

Choose a device (software or firmware version 12.04.0040 to 12.04.0055) that appears in the device table to use as a reference source. The settings for the reference source will be duplicated on all the target devices for the mass configuration. Configure all settings for the reference source to match the global settings you want for mass configuration. (You can configure the reference source through the management console or any other configuration method it supports, as long it's listed in the device table.)

Configurable Items:

1. Event Settings
2. E-mail Settings
3. SNMP Trap Destinations

Step 2 - Select Configuration Reference

Highlight the reference source in the device table and right-click the row. Select “Set configuration reference” from the pop-up menu (Figure 5.5.1). The reference source's configuration will be stored in memory. (Alternative method: click the radio button in the reference column to select the reference source.)

Note: If you configured the reference source outside the management console, confirm that the IP number of the device you select in the table matches the IP number of the reference source.

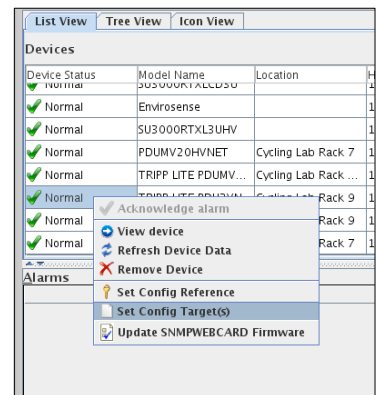


Figure 5.5.1 – Set Target

Step 3 - Choose Targets

Highlight one or more devices in the device list (Use Ctrl + right-click to select multiple devices, or control + right-click if the devices are not listed side by side.) Highlighted devices will be configured to match the configuration reference. Remember that any highlighted devices must be version 12.04.xxxx.

Step 4 - Apply Reference Configuration

After highlighting the target devices, right-click the highlighted devices and select “Apply ref. configuration” from the pop-up menu. (“Apply ref. configuration” will not be available unless a reference source configuration has already been retrieved.)

Click the “Yes” button in the confirmation window if you are certain that you’re ready to proceed, otherwise click the “No” button.

Step 5 - Review Configuration Status

After you click the “Yes” button in the confirmation window, a status window will show a configuration progress bar, a count of devices configured and a list of devices that shows whether each was configured successfully (Figure 5.5.2). The devices that are un-configured will have a blue question mark next to their rows. Also, a Help menu (“Click Here for Help”) will appear at the bottom left of the PANMS console.

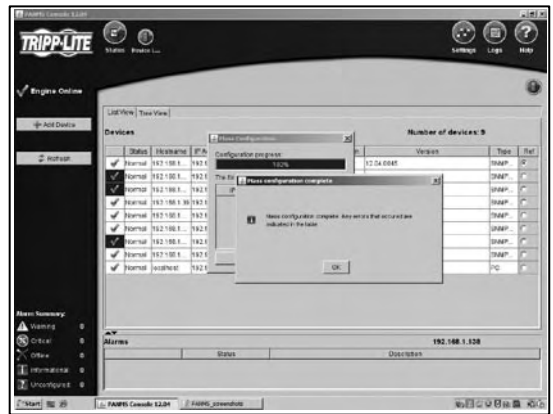


Figure 5.5.2 – Mass Config Complete

5.6 Clearing Unconfigured Device Alarms

PowerAlert Network Management System automatically attempts to configure discovered Tripp Lite devices. Configuration may not be complete for some SNMPWEBCARD devices, which will show an “Unconfigured Device” alarm (identified by a “?” status icon). To clear an alarm, double-click the device’s IP address to open its console window, then follow the steps shown below for the appropriate firmware level.

SNMPWEBCARD Firmware 12.04.0040, 12.04.0045 and 12.04.0048, and 12.06.006x

An “Unconfigured Device” alarm on these devices indicates that a read-only SNMP community string was used to discover the device. You can clear the alarm by changing the read-only community string to read/write, or you can enter a new read/write community string, delete the IP address from the device listing and add the device again using the new community string.

SNMPWEBCARD Firmware 12.04.0034

Go to Settings > Events Window and configure each event to send SNMP traps to PowerAlert Network Management System. (You must configure at least the first event in the list.) To configure an event, highlight the event name and click the “SNMP Trap Notification” check box. A pop-up window (Figure 5.6.1) will appear. Highlight the “PowerAlert Network” trap destination and click the “Save Changes” button. Verify that “SNMP Trap Notification” is enabled in the Settings > Events window and click the



Figure 5.6.1 – SNMP Settings

“Save Changes” button. Repeat for each event. (PowerAlert Network Management System will periodically check the device to see if the first event is configured to send traps. When the configuration change is detected, the “Un-configured Device” alarm will clear.)

SNMPWEBCARD Firmware 12.04.0019-0032

1. Go to Settings > Contacts Window
2. Click the “SNMP” tab.
3. Select the “PowerAlert Network Management” entry – it will have an empty IP address.
4. Click the “Edit” button and enter IP address for the PowerAlert Network Management System station.
5. Go to Settings > Events.
6. Configure all events to send SNMP traps to “PowerAlert Network Management” – you must configure at least the first event in the list.
7. When PowerAlert Network Management System detects the configuration change, it will clear the “Un-configured Device” alarm for that device.

5.7 Email/Trap Forwarding

You can set up PowerAlert Network Management System to forward your UPS system's alarm records to an e-mail or SNMP trap. Use the check boxes to select which alarm categories will be forwarded.

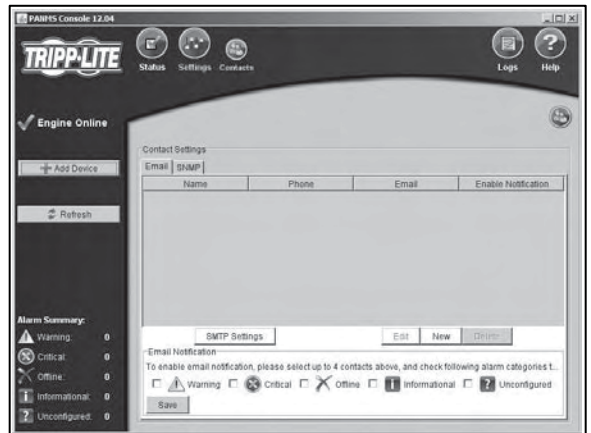


Figure 5.7.1 – SNMP Settings

5.8 Logging

Because events are stored internally, you can convert the event log into a text file and automatically e-mail it to pre-selected contacts periodically.

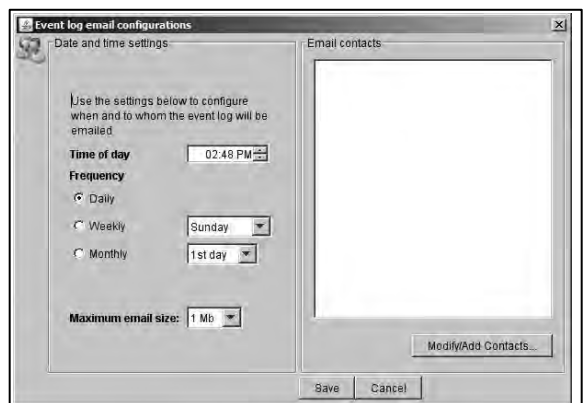


Figure 5.8.1 – Event Log Email Config

5.9 Event Log Sorting

Allows the event log to be displayed based upon user selected sort criteria.



Figure 5.9.1 – Sort Criteria

6. Technical Support

Tripp Lite technical support personnel are available via email and the web at:

E-mail

techsupport@tripplite.com

Web

The latest PowerAlert software updates are available at

<http://www.tripplite.com/software/>

Technical Support Assistance

<http://www.tripplite.com/support>

Tripp Lite has a policy of continuous improvement. Specifications are subject to change without notice.



1111 West 35th Street, Chicago, IL 60609 USA
www.tripplite.com/support