

# ActivPanel Height-Adjustable Stands

INTERACTIVE FLAT PANEL STAND OPTIONS

## PRODUCT SPECIFICATIONS

The ActivPanel Height-Adjustable Stands are a perfect solution to move the ActivPanel up and down effortlessly. Designed with a shielded spring-based system and no power requirements, the Height-Adjustable Stands are maintenance free and an ideal fit for the classroom.

### Height-Adjustable Wall Mount Specifications

Compatible with ActivPanel 65", 70", 75", 86" and ActivPanel i-Series 65", 75"



#### PHYSICAL SPECIFICATIONS

|                                     | Wall Mount for 65", 70", 75" Sizes | Wall Mount for 86" Size               |
|-------------------------------------|------------------------------------|---------------------------------------|
| Product Dimensions                  | 559 x 609 x 69 mm (22 x 24 x 3 in) | 925 x 1087 x 170 mm (36 x 43 x 7 in)  |
| Packed Dimensions                   | 630 x 740 x 95 mm (25 x 29 x 4 in) | 960 x 1095 x 190 mm ( 38 x 43 x 8 in) |
| Net Weight                          | 21.6 kg (48 lbs)                   | 71 kg (157 lbs)                       |
| Packed Weight                       | 24 kg (53 lbs)                     | 75 kg (165 lbs)                       |
| Travel Distance (Adjustable Height) | 400 mm (15.75 in)                  | 650 mm (25.5 in)                      |

#### PACKED CONTENTS

|                   |   |  |
|-------------------|---|--|
| What's in the Box | Box 1 of 1: ActivPanel height-adjustable wall mount, mounting bar, wall frame cover, screw kit, side covers, installation guide, (Vesa mount required is included with ActivPanel. It is not included with ActivPanel i-Series and needs to be purchased separately.) | Box 1 of 1: ActivPanel height-adjustable wall mount, mounting bar, wall frame cover, screw kit, installation guide, (Vesa mount to be purchased separately). |
|-------------------|---|--|

#### ADDITIONAL REQUIREMENTS

|  |   |
|--|---|
| Users of the ActivPanel i-Series 65" and 75" need to purchase Vesa mount (AP-WALLMNT). | Users of the ActivPanel 86" need to purchase an additional Vesa mount (APTVMBB650), specifically designed to operate with this stand. This Vesa mount is Included in NAM sales bundle (AP86ASW) |
|--|---|

# ActivPanel Height-Adjustable Stands

## PRODUCT SPECIFICATIONS

### Wall Mount Accessories

The floor support accessory is required for schools that have thin walls or drywalls to ensure proper support for the ActivPanel.\*

### Height-Adjustable Wall Mount Floor Support Specifications

Compatible with ActivPanel 65", 70", 75", 86" and ActivPanel i-Series 65", 75"



### PHYSICAL SPECIFICATIONS

|                    | Floor Support for 65", 70", 75" Sizes | Floor Support for 86" Size          |
|--------------------|---------------------------------------|-------------------------------------|
| Product Dimensions | 650 x 2007 x 46 mm (26 x 79 x 2 in)   | 739 x 2009 x 69 mm (29 x 79 x 3 in) |
| Packed Dimensions  | 145 x 1070 x 72 mm (6 x 42 x 3 in)    | 170 x 1080 x 70 mm (7 x 43 x 3 in)  |
| Net Weight         | 11 kg (24 lbs)                        | 13.7 kg (30 lbs)                    |
| Packed Weight      | 11.4 kg (25 lbs)                      | 14.1 kg (31 lbs)                    |

### PACKED CONTENTS

| What's in the Box | Box 1 of 1: Frame assembly, screw kit, cover strips for floor support legs, installation guide | Box 1 of 1: Frame assembly, screw kit, cover strips for floor support legs, installation guide |
|-------------------|--|--|
|-------------------|--|--|

\*Consult your local building guidelines prior to installation.

ActivPanel 2018 Height-Adjustable Stands SS 01/18 v2.4 EN

### Height-Adjustable Mobile Stand Specifications

Compatible with ActivPanel 65", 70", 75" and ActivPanel i-Series 65", 75"



#### PHYSICAL SPECIFICATIONS

Mobile Stand for 65", 70", 75" Sizes

|                                     |   |
|-------------------------------------|---|
| Product Dimensions                  | 1196 x 1803 x 876 mm (47 x 71 x 34 in)  |
| Packed Dimensions                   | Box 1 of 2 (Mobile Stand): 945 x 1735 x 180 mm (37 x 68 x 7 in)<br>Box 2 of 2 (Height-Adjustable Mount): 630 x 740 x 95 mm (29 x 25 x 3.7 in) |
| Net Weight                          | Box 1 of 2 (Mobile Stand): 42.5 kg (94 lbs)<br>Box 2 of 2 (Height-Adjustable Mount): 21.6 kg (47.6 lbs)                                       |
| Packed Weight                       | Box 1 of 2 (Mobile Stand): 48.5 kg (107 lbs)<br>Box 2 of 2 (Height-Adjustable Mount): 24 kg (52.9 lbs)  |
| Travel Distance (Adjustable Height) | 400 mm (15.75 in)   |

#### PACKED CONTENTS

|                   |   |
|-------------------|---|
| What's in the Box | Box 1 of 2: Mobile stand base, mobile stand frame, castors, screw kit, installation guide<br>Box 2 of 2: Height-adjustable mount (Vesa mount required is included with ActivPanel. It is not included with ActivPanel i-Series and needs to be purchased separately.) |
|-------------------|---|

#### ADDITIONAL REQUIREMENTS

Users of the ActivPanel i-Series 65" and 75" need to purchase Vesa mount (AP-WALLMNT)

#### WARRANTY

For Promethean Warranty Terms and Conditions, please visit [PrometheanWorld.com/ActivCare](http://PrometheanWorld.com/ActivCare).

#### INSTALLATION

The installation of this product should be completed by a qualified installer. Use of components not supplied by Promethean or not meeting minimum specifications may impact performance, safety and warranty. For more information, visit [Support.PrometheanWorld.com](http://Support.PrometheanWorld.com).

#### COMPLIANCE & CERTIFICATION

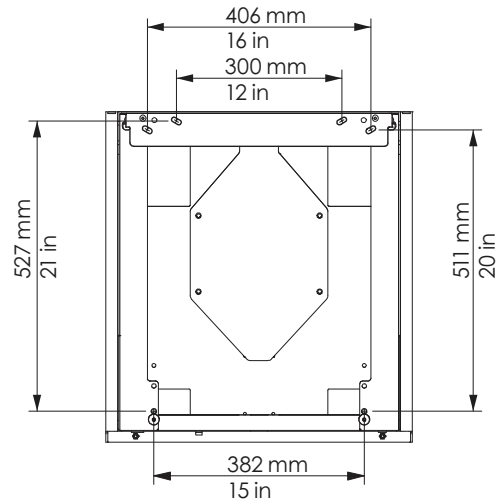
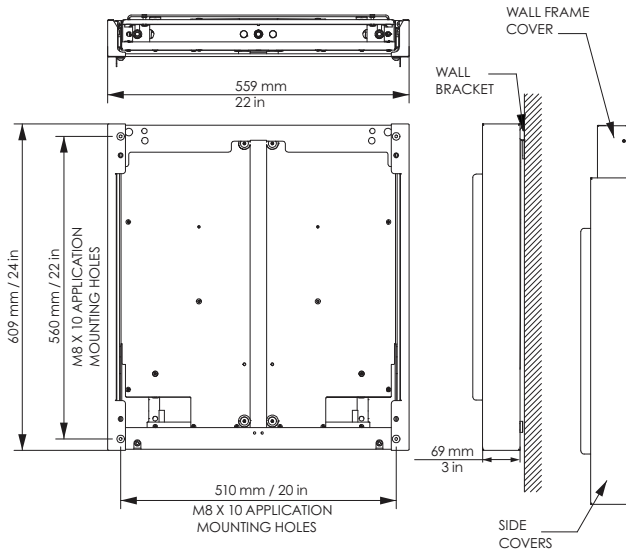
Regulatory Certification CE LVD, CB, UL, CUL

#### SUPPORT

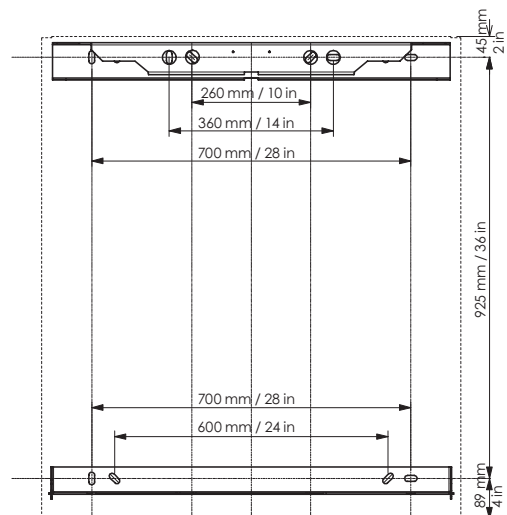
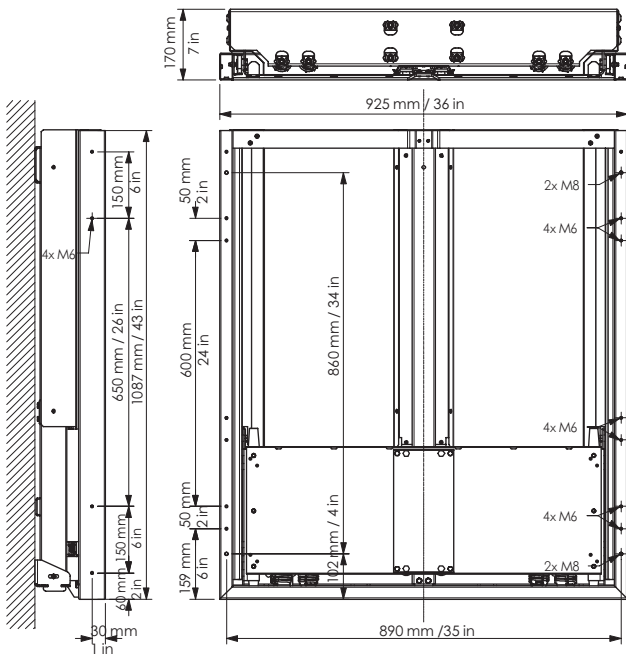
For all Promethean products, visit [Support.PrometheanWorld.com](http://Support.PrometheanWorld.com).

TECHNICAL DRAWINGS

Height-Adjustable Wall Mount for 65", 70", 75" Sizes



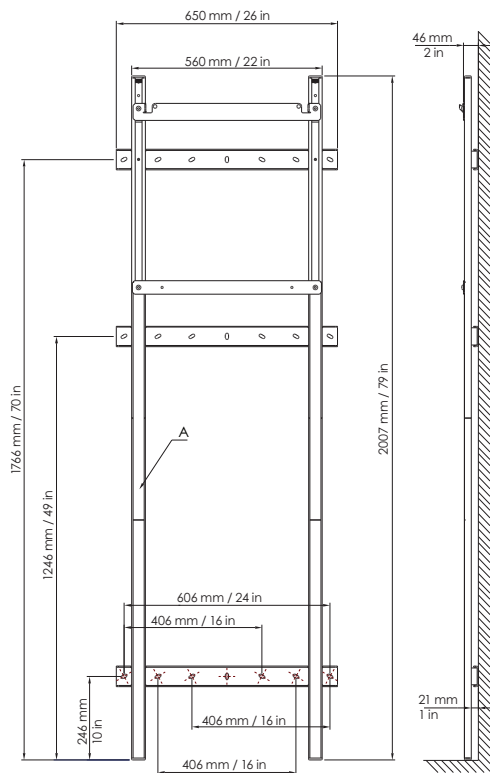
Height-Adjustable Wall Mount for 86" Size



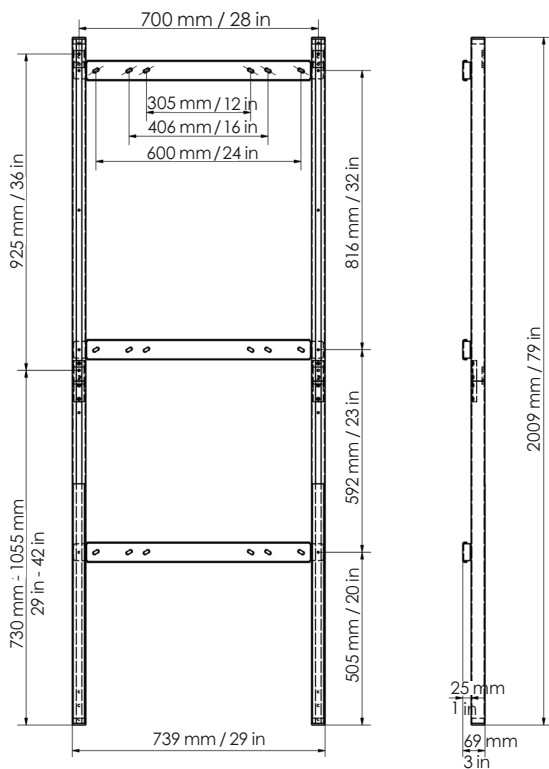
ActivPanel 2018 Height-Adjustable Stands SS 01/18 v2.4 EN

TECHNICAL DRAWINGS

Height-Adjustable Wall Mount Floor Support for 65", 70", 75" Sizes



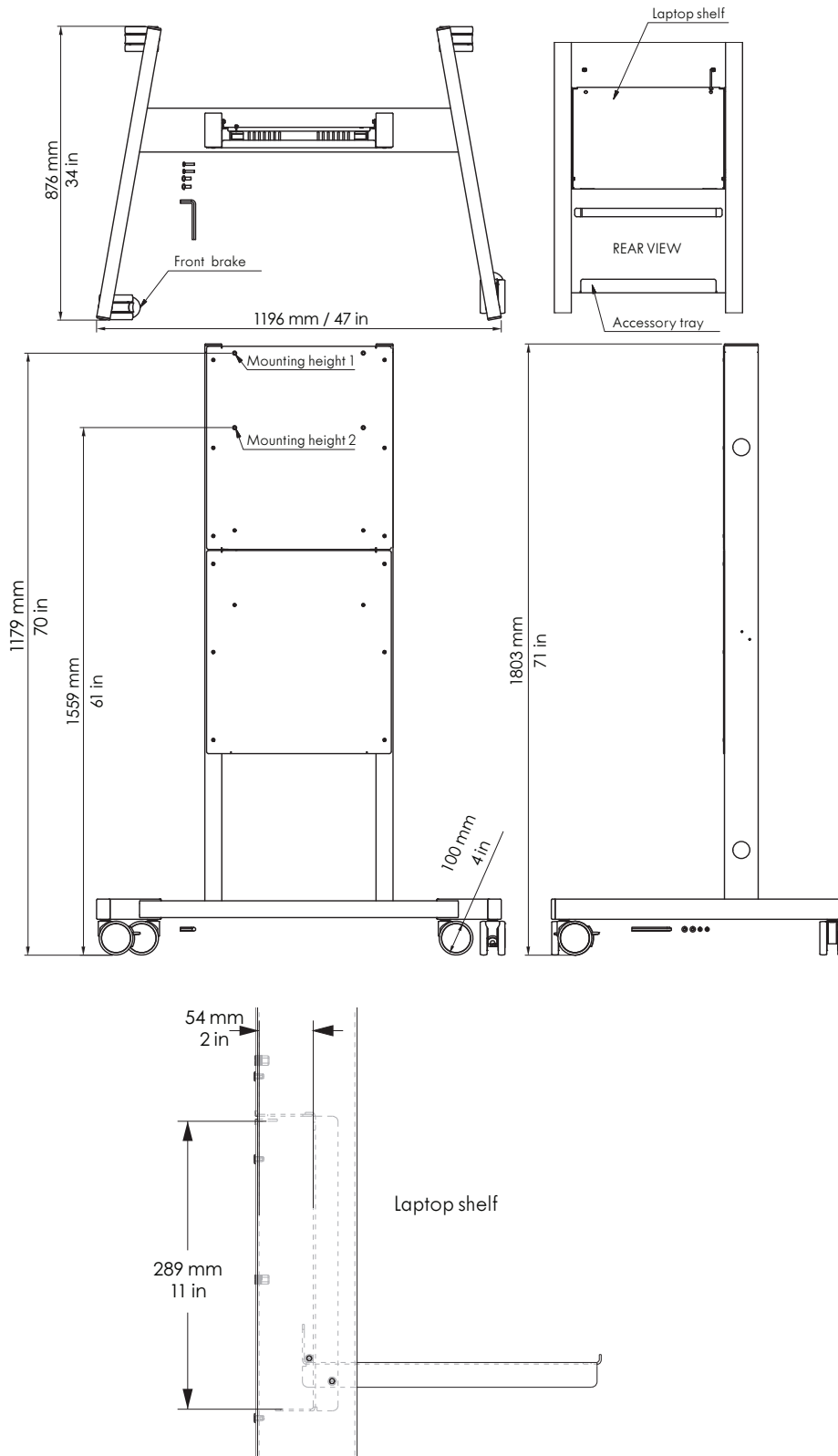
Height-Adjustable Wall Mount Floor Support for 86" Size



ActivPanel 2018 Height-Adjustable Stands SS 01/18 v2.4 EN

TECHNICAL DRAWINGS

Height-Adjustable Mobile Stand for 65", 70", 75" Sizes



ActivPanel 2018 Height-Adjustable Stands SS 01/18 v2.4 EN