



Prep for the future with KingFisher instruments

Automated sample preparation
for DNA, RNA, protein, or cells

KingFisher instruments are ...



Consistent

The unique instrument design, moving magnetic beads instead of liquids, leads to cleaner extractions and consistent results with every run



Convenient

Easy to set up and run, or customize to fit your lab's needs



Versatile

Enables more applications than any other sample preparation instrument



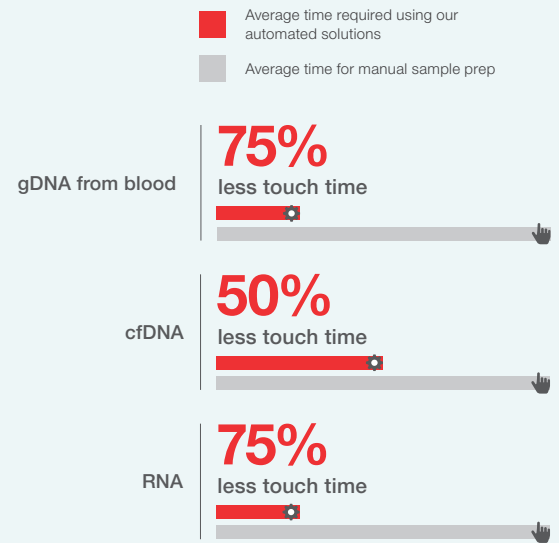
Supported

Backed by the industry's largest network of specialists dedicated to supporting these instruments

Why choose a KingFisher instrument?

Your samples, faster

Thermo Scientific™ KingFisher™ instruments save you valuable time by removing manual steps and reducing overall processing time, even when compared with other instruments.



Your samples, consistently

KingFisher instruments help reduce user processing errors while increasing the reproducibility of your results. Our data show that samples processed with KingFisher instruments have consistent results across runs and different users, which is important for more sensitive downstream applications such as qPCR, NGS, digital PCR, and mass spectrometry.

Your samples, more easily

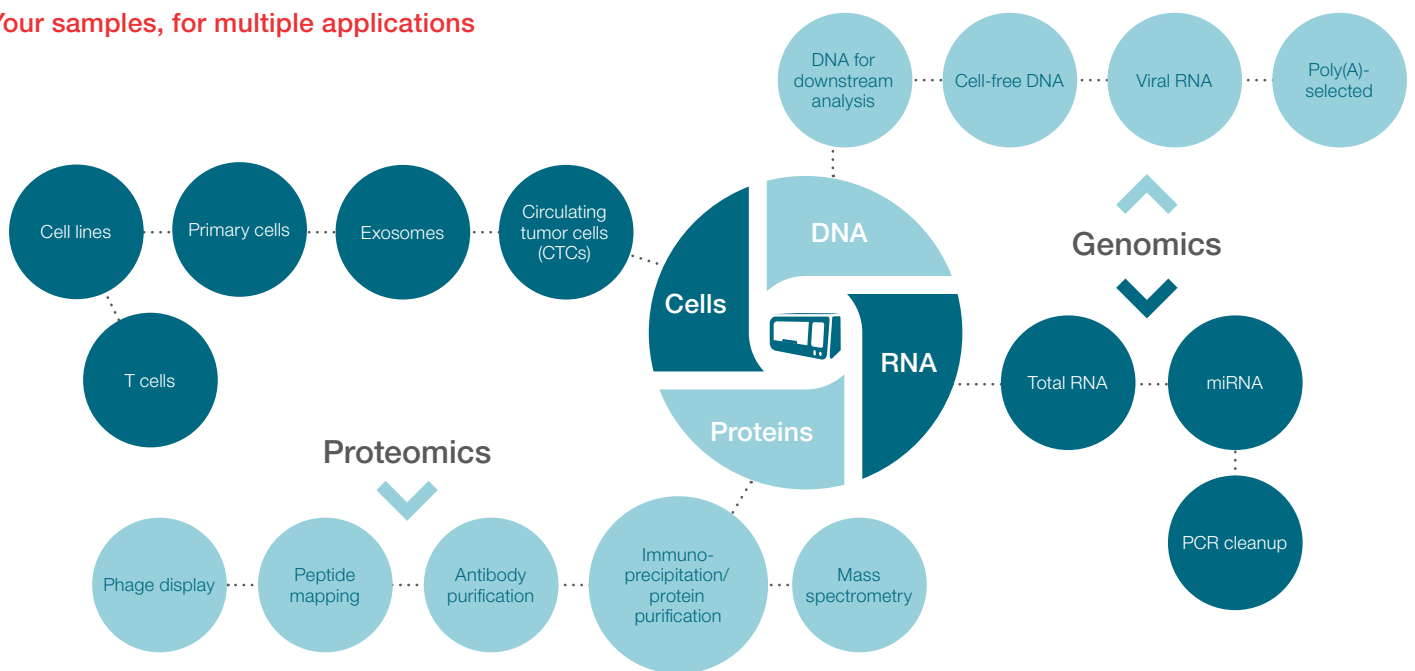
KingFisher instruments offer optimized, easy-to-follow protocols for nearly every downstream application or sample type.

Typical run with KingFisher instrument



* Can vary depending on application and instrument.

Your samples, for multiple applications



The KingFisher instrument experience

A complete system to automate sample preparation in your lab



Instrument

Select a KingFisher instrument based on your throughput needs



Kits and reagents

Choose kits and reagents from trusted brands, such as Applied Biosystems™ MagMAX™ kits and Invitrogen™ Dynabeads™ reagents



Customize

Use plastics, software, and interchangeable magnetic heads to customize and optimize your process

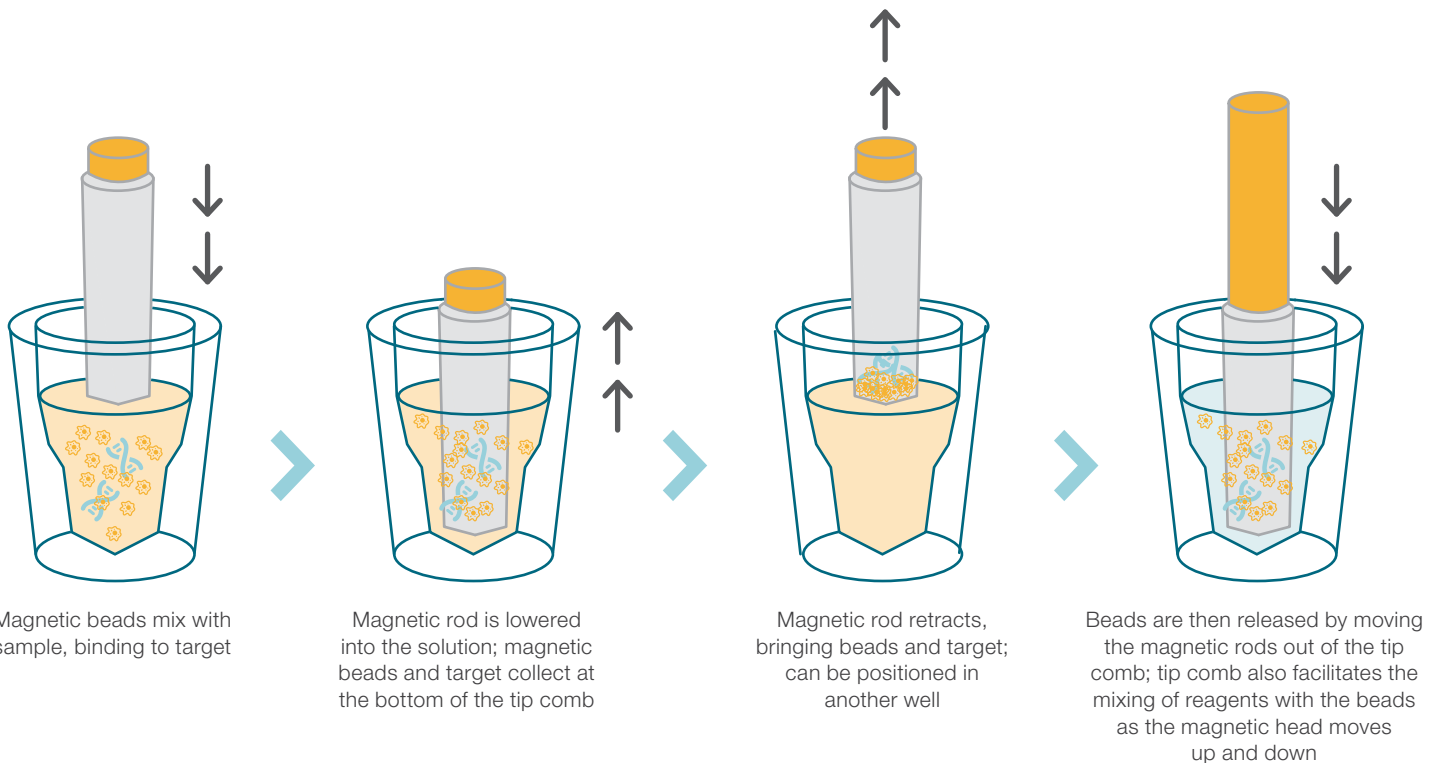


Support

Contact dedicated KingFisher instrument specialists for application and instrument support

How KingFisher instruments work

KingFisher instruments automate extraction of DNA, RNA, protein, and cells by moving magnetic beads (not liquids), leading to clean extractions and enabling consistent results. Using a simple process (bind, wash, elute), KingFisher instruments can automate the extraction of any analyte of interest with a bead on it.



KingFisher instruments

KingFisher instruments are the most versatile sample preparation instruments in the lab, and are elegantly designed to support multiple applications.

- **Various throughputs**—process 6–96 samples per run depending on the instrument model
- **Interchangeable formats**—choose 24- or 96-well plates so you can process a wide range of input volumes
- **Protocol customization**—easily edit, modify, or create new protocols (touchscreen enabled for Thermo Scientific™ KingFisher™ Apex instrument only)
- **Optimized reagents**—compatible with multiple magnetic-bead reagents
- **Barcoded plastics**—achieve optimal performance with specially designed plastics (for KingFisher Apex instrument only)

Test a KingFisher platform in your lab

Specialists supporting the KingFisher instrument can provide an on-site demonstration of the system with your samples. They provide the instrument, consumables, and reagents from Thermo Fisher Scientific that are specific to your research needs. The demonstration includes instrument setup and use, protocol modification, and other FAQs. Find out more at thermofisher.com/kingfisherdemo

Find a model that meets your needs



KingFisher instrument:	Duo Prime	Flex	Apex	Presto
Instrument size	Compact benchtop	Benchtop	Benchtop	Benchtop—integrates with robotic liquid handler
Throughput level	Low to medium	High	High	Ultrahigh
Processing volume range	<ul style="list-style-type: none"> • 50–1,000 µL: 12-pin magnet head • 200–5,000 µL: 6-pin magnet head 	<ul style="list-style-type: none"> • PCR plate (20–100 µL*), skirted • 20–200 µL: 96-well plate • 50–1,000 µL: 96 deep-well plate • 200–5,000 µL: 24 deep-well plate 	<ul style="list-style-type: none"> • 15–1,000 µL: 96 deep-well plate • 15–200 µL: 96-well KingFisher standard plate • 10–80 µL: 96-well PCR plate • 30–5,000 µL: 24 deep-well plate • 30–200 µL: 96 storage tubes • 200–1,000 µL: 24 storage tubes 	<ul style="list-style-type: none"> • 50–1,000 µL: 96 deep-well plate • 200–5,000 µL: 24 deep-well plate • KingFisher 96 plate: 50–150 µL
Samples per run	6 or 12	24 or 96	24 or 96	24 or 96
Customizable protocols	Yes	Yes	Yes, with touchscreen or PC software	Yes
Heating/cooling	<ul style="list-style-type: none"> • 10°C to 75°C (plate row block A) • 4°C to 75°C (elution strip block) 	From 5°C above ambient temperature to 115°C	<ul style="list-style-type: none"> • From 4°C above ambient temperature to 100°C • Cooling down to 4°C 	From 5°C above ambient temperature to 115°C
Ultraviolet lamp	8 watts (up to 16 hr)	No	2 UV lamps, max 23 h 59 min	No

* Or similar skirted PCR plate.

KingFisher Apex system

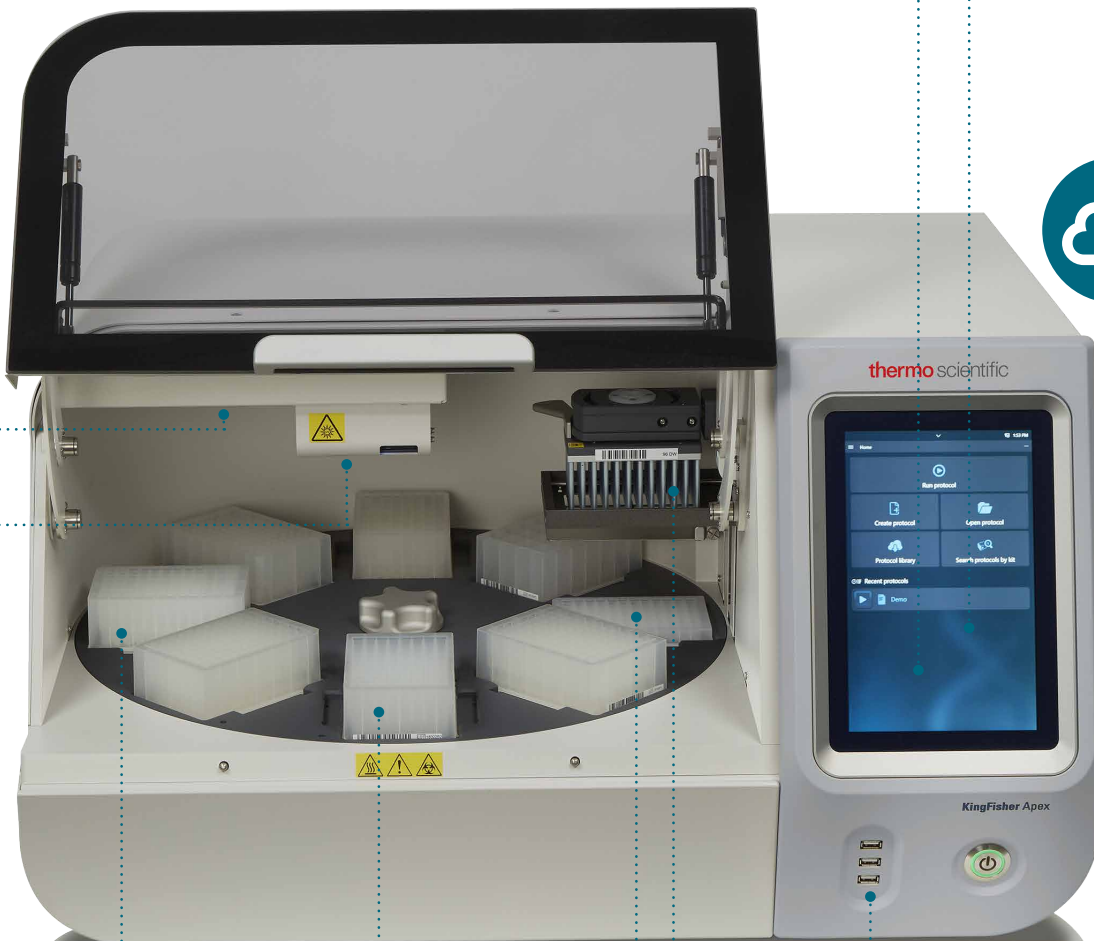
The newest in KingFisher sample purification technology

Intuitive touchscreen interface

Write or edit protocols directly on instrument



UV decontamination



Barcode scanning for plate setup

Storage tube elution

96-well, 24-well, and PCR formats

Optional network connectivity

Switch between two magnet heads

Heating and cooling blocks

 Cloud-enabled

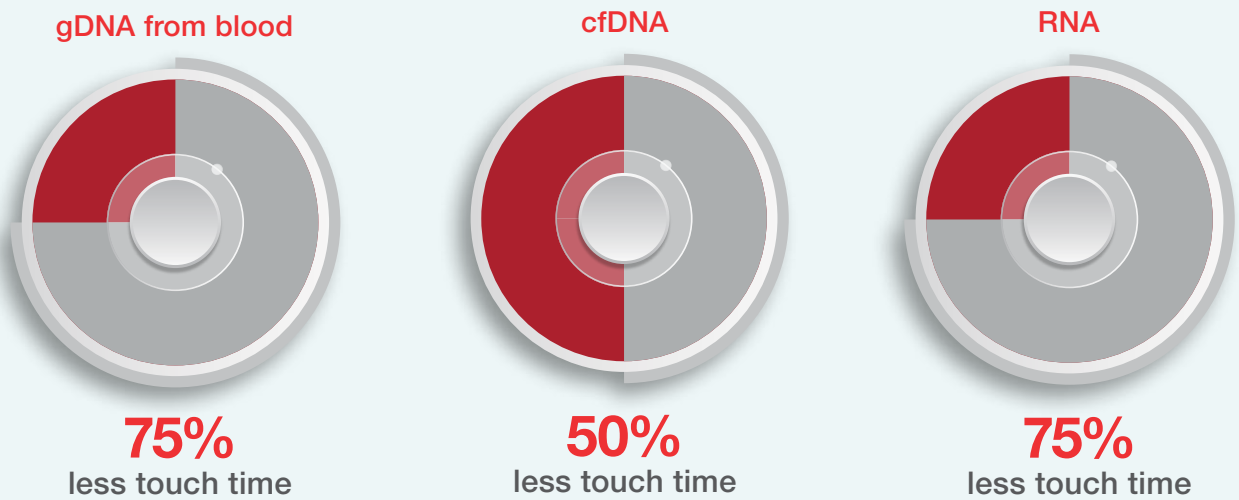


Enhanced performance

Achieve peak performance for purifying DNA, RNA, proteins, or cells, now with even greater flexibility for fast and reproducible results with almost any application.

- Elute in lower volumes (10 μ L) for demanding downstream applications
- Purify 24 or 96 samples in 25–65 min
- Control heating and cooling to maintain sample integrity
- Elute in storage tubes and revisit samples later
- Safeguard against contamination with two UV lights

Sample prep as it should be—fast, flexible, consistent.*



* Based on actual extraction times in lab.

■ Average time required using our automated solutions

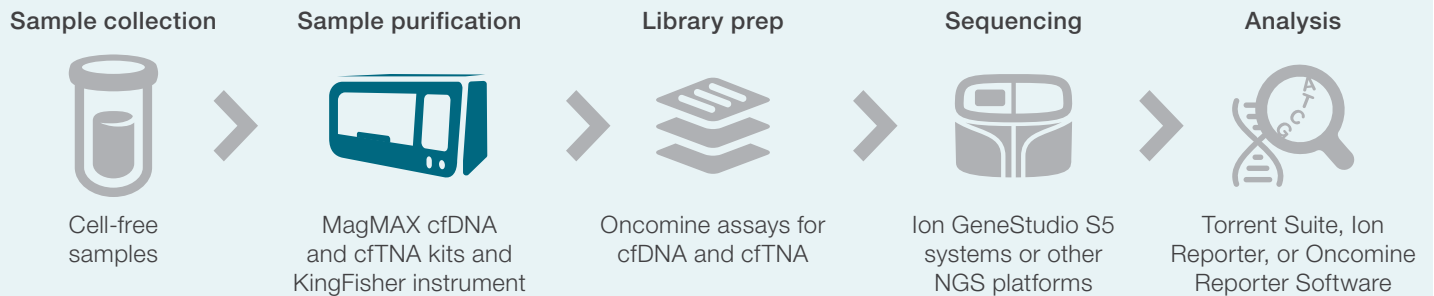
■ Average time for manual sample prep

Featured KingFisher instrument applications

Liquid biopsy for cancer research

Rapid purification of nucleic acids from cell-free samples for liquid biopsy research. Optimized specifically for enrichment of cfDNA and cell-free total nucleic acid (cfTNA), not gDNA, which means increased recovery and lower starting volumes. Elute in volumes compatible with Ion Torrent™ Oncomine™ assays.

Sample workflow

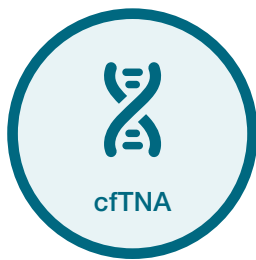


Recommended kits



Applied Biosystems™ MagMAX™ Cell-Free DNA Isolation Kit

Sample type	Serum, plasma, and urine
Sample input volume	0.5–10 mL plasma, 0.1–10 mL serum, 10 mL of urine
Yield	40–50 ng from 4 mL plasma
Elution volume	15–50 µL
Total processing time	45–55 min total (10–15 min hands-on time)
Reactions (rxn)	50 rxn for 2 mL plasma input 25 rxn for 4 mL plasma input
Cat. No.	A29319



Applied Biosystems™ MagMAX™ Cell-Free Total Nucleic Acid Isolation Kit

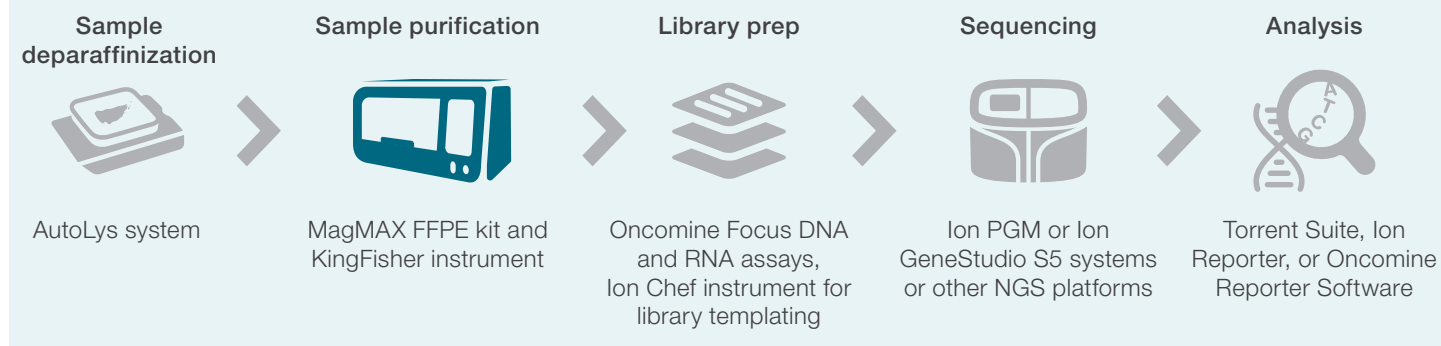
Sample type	Serum and plasma
Sample input volume	1–6 mL plasma
Yield	Up to 50 ng DNA from 4 mL and 5–100 pg from 10 mL of sample input
Elution volume	15–60 µL
Total processing time	45–55 min total (10–15 min hands-on time)
Reactions (rxn)	50 rxn for 2 mL plasma input 25 rxn for 4 mL plasma input
Cat. No.	A36716

Find out more at thermofisher.com/cfdnaisolation

Formalin-fixed, paraffin-embedded (FFPE) samples

Sequentially isolate DNA and RNA from FFPE samples and get high-quality gDNA yields comparable to fresh-frozen blood.







Sample workflow



Recommended kits

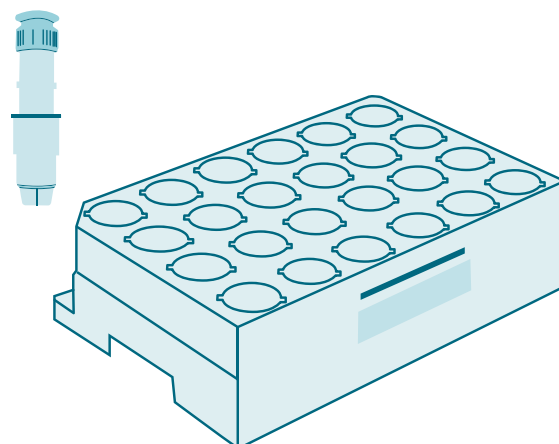


Applied Biosystems™ MagMAX™ FFPE DNA/RNA Ultra Kit

 Sample type	FFPE tissue samples, such as resections, biopsies, and aspirates
 Sample input volume	5–40 µm standard input of slides or curls
 Elution volume	20–50 µL
 Total processing time	20 min for DNA, 48 min for RNA
 Reactions (rxn)	96 isolations (48 RNA and 48 DNA, or 96 DNA or 96 RNA)
 Cat. No.	A31881

AutoLys system

Speed up your deparaffinization process with the Applied Biosystems™ AutoLys system. Comprised of pretreated tubes and a rack system to help reduce pipetting steps, the system eliminates the need for hazardous chemicals and helps minimize loss of tissue sample. **Note:** Not included with the MagMAX FFPE DNA/RNA Ultra Kit.



Find out more at thermofisher.com/ffpeisolation

DNA for downstream analysis

Extract high-quality DNA that is compatible with sequencing or array platforms, from a range of sample types. Choose from multiple protocols, but only two options for either large or small volume inputs, without normalization.

Sample workflow

Sample collection



Compatible with multiple sample types



Sample purification



MagMAX DNA Multi-Sample Ultra 2.0 Kit and KingFisher instrument



Analysis



Compatible with multiple downstream applications

- qPCR
- Sequencing (NGS or CE platform)
- Array
- Digital PCR

Recommended kits

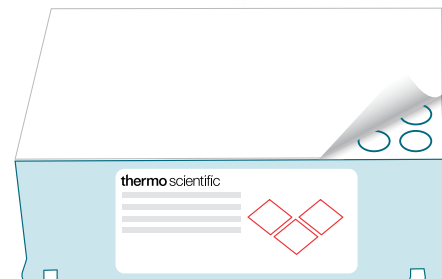


Applied Biosystems™ MagMAX™ DNA Multi-Sample Ultra 2.0 Kit

Sample type	Multiple, including whole blood, swabs, tissue, and more
Sample input volume	50 µL–2 mL
Yield	1.5–4 µg (50 µL of blood) 2–12 µg (1 buccal swab)
Elution volume	50 µL–1 mL
Total processing time	6–96 samples in 30–45 min depending on sample type
Reactions (rxn)	1 kit = 100 rxn of 50–400 µL volume or 200 rxn of <200 µL volume; bulk reagents sold separately
Cat. No.	A36570

KingFisher instrument-ready reagents

Reduce your pipetting steps with prefilled reagent plates for the Thermo Scientific™ KingFisher™ Duo Prime and Thermo Scientific™ KingFisher™ Flex instruments. Now, MagMAX DNA Multi-Sample Ultra 2.0 isolation reagents come prefilled into the plates that go in the KingFisher instrument. Just peel off the plate cover, add lysed samples, and load plates onto the instrument. Find out more at thermofisher.com/kingfisherready



Find out more at thermofisher.com/magmaxultra and thermofisher.com/kingfisherready

RNA for gene expression

Isolate total RNA, as well as small RNAs such as microRNA (miRNA), from a wide variety of sample types using a phenol-free extraction (no organic extraction).

Sample workflow

Sample collection



Compatible with multiple sample types



Sample purification



MagMAX *mirVana* kit and KingFisher instrument



Analysis



Compatible with multiple downstream applications

- qPCR
- Sequencing (NGS or CE platform)
- Array
- Digital PCR

Recommended kits



Applied Biosystems™ MagMAX™ *mirVana*™ Total RNA Isolation Kit

Sample type	Multiple, including plasma/serum, whole blood, tissue, cell culture, urine
Sample input volume	50 µL of blood, up to 50 mg of tissue, 1 x 10 ⁶ cells, 100 µL of plasma or serum, 250 µL of urine
Yield	100 ng RNA from whole blood (50 µL) 600 ng from 5 mg mouse brain 2.5 µg from 5 mg mouse liver
Elution volume	50 µL
Total processing time	1.5–2 hr total time (20 min hands-on time)
Reactions (rxn)	96 rxn
Cat. No.	A27828

Find out more at thermofisher.com/magmaxmirvana

Genetic testing

Speed up your processing of saliva samples for genetic testing. Recover DNA that is compatible with NGS and array platforms, from 96 samples, in 25 minutes. Reagents were tested with the 10 most common saliva collection devices to confirm consistent results.

Sample workflow

Sample collection



Compatible with multiple saliva collection devices

Sample purification



MagMAX saliva kit and KingFisher instrument

Target prep



Axiom reagents and consumables

Array processing



GeneTitan MC Instrument or other array platform

Analysis










Axiom Analysis Suite

Recommended kits



Applied Biosystems™ MagMAX™ Saliva gDNA Isolation Kit

 Sample type	Fresh and preserved saliva
 Sample input volume	200 µL–2 mL
 Yield	100 ng/µL saliva on average (yield is dependent on each individual donor)
 Elution volume	50 µL
 Total processing time	25 min (5 min hands-on time)
 Reactions (rxn)	100 rxn 500 rxn
 Cat. No.	A39059, A39060

Find out more at [thermofisher.com/saliva](https://www.thermofisher.com/saliva)

Infectious disease and microbiome research

Sample workflow

Sample collection



Compatible with multiple sample types



Sample purification



MagMAX microbiome kit and KingFisher instrument



Analysis



Compatible with multiple downstream applications



- Viral/pathogen
- qPCR
- Microbiome
- Sequencing
- Digital PCR
- Wastewater

Virus and pathogen detection

- **Recovery**—compatible with low-titer samples
- **No carrier required**—less interference with NGS and fewer steps required

Microbiome research

- Enzyme—based digestion
- Recover from a wide range of microorganisms without additional processing steps

Recommended kits



Applied Biosystems™ MagMAX™ Microbiome Ultra Nucleic Acid Isolation Kit

Sample type	Stool, soil, swabs, urine, and saliva
Sample input volume	100 mg of stool, 250 mg of soil, 400 µL of biofluid
Yield	40–60 µg of stool, 5–10 µg of soil
Elution volume	50–200 µL or more
Total processing time	50 min for stool, 70 min for soil and biofluid
Reactions (rxn)	100 rxn
Cat. No.	A42357 (with plate), A42358 (with tubes)

Applied Biosystems™ MagMAX™ Viral/Pathogen Nucleic Acid Isolation Kit

Sample type	Plasma, whole blood, urine, BAL, VTM, serum, CSF, and saliva
Sample input volume	200 µL–2 mL
Detection limit	≥50 copies
Elution volume	50–100 µL
Total processing time	40 min
Reactions (rxn)	100 rxn
Cat. No.	A42352

Applied Biosystems™ MagMAX™ Viral/Pathogen Ultra Nucleic Acid Isolation Kit

Sample type	Swabs, plasma, whole blood, urine, BAL, VTM, serum, CSF, and saliva
Microbes	Lysed virus, yeast, fungus, gram-negative and gram-positive bacteria
Sample input volume	200 µL–2 mL
Detection limit	≥50 viral copies, ≥1,000 CFU (bacteria or fungi)
Elution volume	60–100 µL
Total processing time	65 min
Reactions (rxn)	100 rxn
Cat. No.	A42356

Find out more at thermofisher.com/magmaxmicrobiome and thermofisher.com/magmaxviralpathogen

Wastewater research and surveillance

Sample workflow

Sample collection



Compatible with multiple sample types

Sample purification



MagMAX microbiome kit and KingFisher instrument

Analysis



Compatible with multiple downstream applications

- Viral/pathogen monitoring
- qPCR
- Wastewater microbe detection
- Sequencing
- Digital PCR

Wastewater surveillance testing and research

- Choose your preferred concentration method and protocol
- Preconcentrate samples from large volumes using ultracentrifugation, precipitation, or filtration
- Use Dynabeads option for automated viral enrichment of up to 10 mL volume
- Directly isolate from 1 mL of wastewater without concentration

Recommended kits



Applied Biosystems™ MagMAX™ Wastewater Ultra Nucleic Acid Isolation Kit

	Sample type	Wastewater, water, and sludge
	Sample input volume	200 µL–500 mL or 200 mg of sludge
	Yield	Varies
	Elution volume	50–100 µL
	Total processing time	45–90 min
	Reactions (rxn)	20–100 rxn
	Cat. No.	A52606

Applied Biosystems™ MagMAX™ Wastewater Ultra Nucleic Acid Isolation Kit with Virus Enrichment

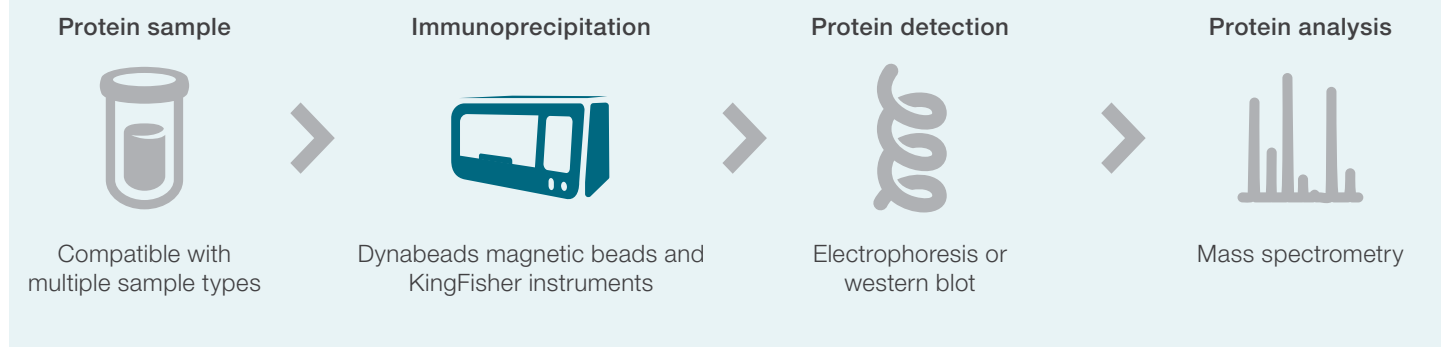
	Sample type	Wastewater, water
	Sample input volume	10 mL
	Yield	Varies
	Elution volume	50–100 µL
	Total processing time	75 min
	Reactions (rxn)	100 rxn
	Cat. No.	A52610

Find out more at thermofisher.com/magmaxwastewater

Immunoprecipitation (IP)

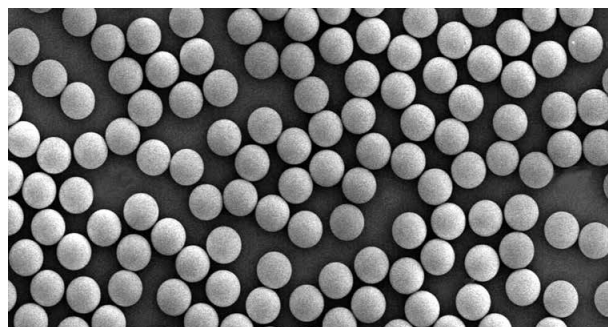
KingFisher instruments with Invitrogen™ Dynabeads™ magnetic beads offer great balance of high yield and reproducibility with low nonspecific binding, which is one reason they have become the gold standard for immunoprecipitation using magnetic beads.

Sample workflow



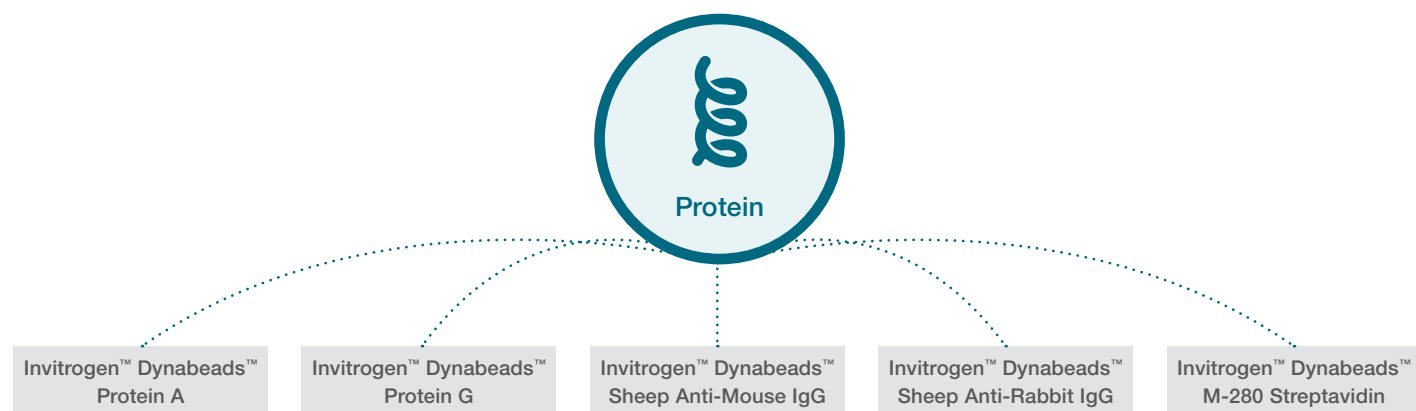
Dynabeads magnetic beads for IP

- Automated IP in 40 min
- High yield with low antibody consumption and low nonspecific binding
- Rapid target binding; short incubation and separation times



Dynabeads products are the most uniform monodisperse superparamagnetic beads on the market, manufactured with highly controlled product qualities to help ensure the highest degree of reproducibility.

Recommended kits

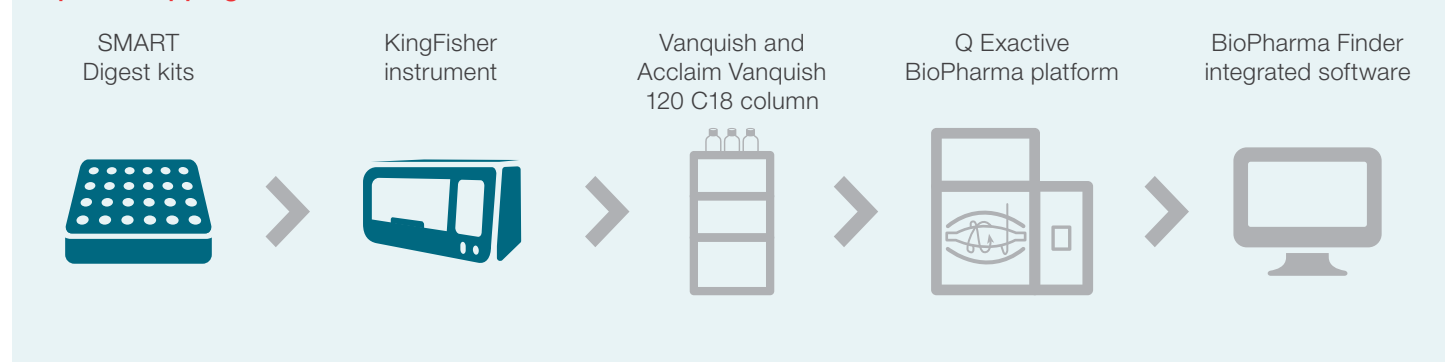


Find out more at [thermofisher.com/immunoprecipitation](https://www.thermofisher.com/immunoprecipitation)

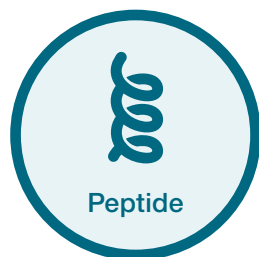
Peptide mapping and quantitation

Amazingly fast, simple, reproducible, and sensitive protein digestion with immunoaffinity capture, helping give you higher confidence in your chromatography and liquid chromatography-mass spectrometry (LC-MS) results.




Peptide mapping workflow



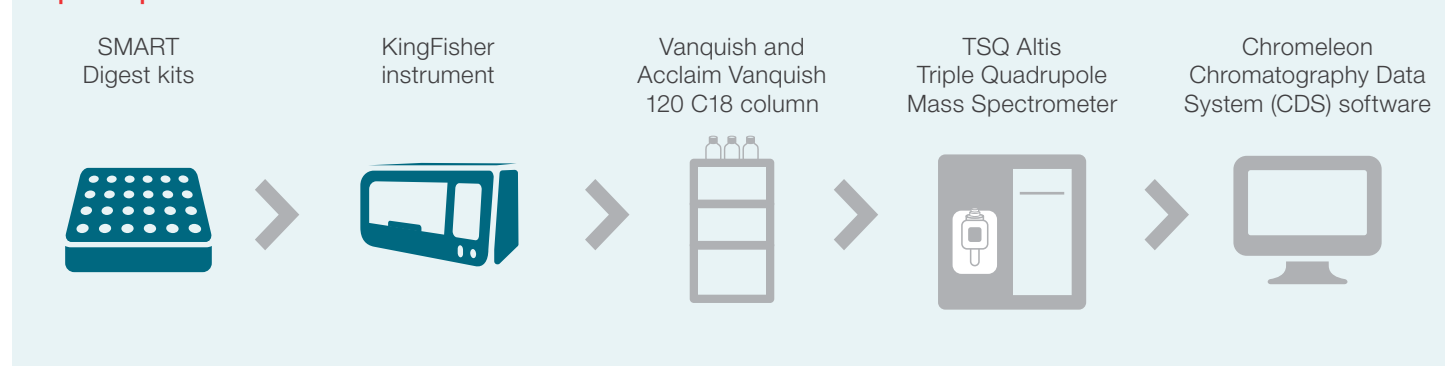
Recommended kits



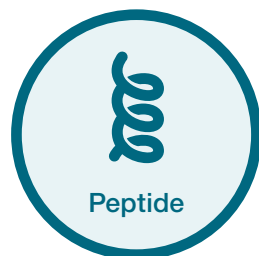
Thermo Scientific™ SMART Digest™ kits for peptide mapping

 Sample type	Cell broth/plasma/serum
 Sample input volume	Up to 50 μ L (200 pg–3.5 mg of total protein)
 Total processing time	Typical mAb ~45 min (dependent on size and complexity of protein)




Peptide quantitation workflow



Recommended kits



Thermo Scientific™ SMART Digest™ immunoaffinity kits for peptide quantitation

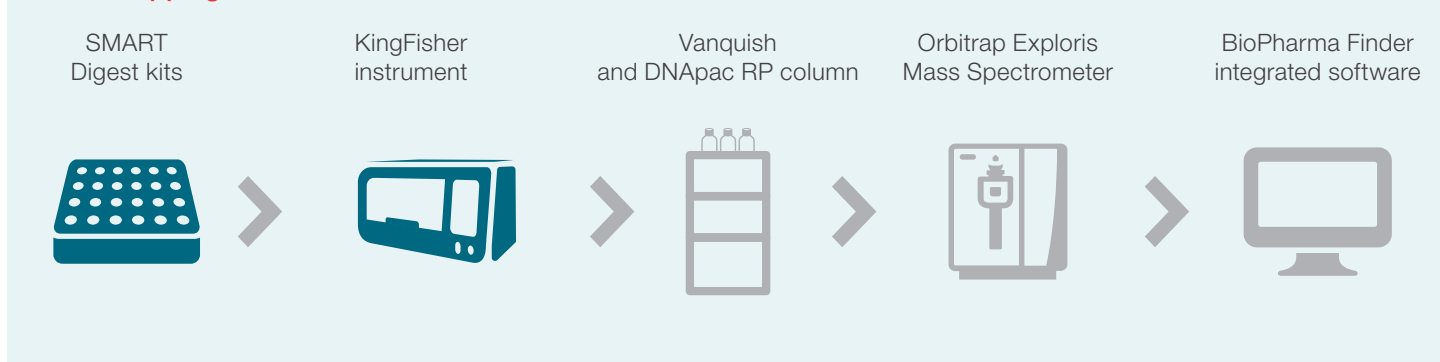
 Sample type	Cell broth/plasma/serum
 Sample input volume	Up to 50 μ L (200 pg–3.5 mg of total protein)
 Total processing time	Typical mAb ~3–4 hr (dependent on size and complexity of protein)

Find out more at thermofisher.com/smartdigest

mRNA mapping

Amazingly fast, simple, reproducible, and sensitive mRNA partial digestion helps give you higher confidence in your chromatography and LC-MS results.




mRNA mapping workflow



Recommended kits



Thermo Scientific™ SMART Digest™ kits for mRNA mapping

 Sample type	Cell broth/plasma/serum
 Sample input volume	Up to 50 μ L (50 μ L of the SMART Digest RNase buffer with 40 μ g of mRNA)
 Total processing time	5–15 min digestion on KingFisher instrument; 60 min LC analysis

Find out more at thermofisher.com/smardigest

Protein purification

Thermo Scientific™ Pierce™ magnetic agarose beads support a variety of ligands for IP, co-IP, pull-down, and other high-throughput affinity screening applications utilizing immobilized protein A/G, Ni-NTA, glutathione, and anti-FLAG.



Sample workflow

Sample collection



Compatible with multiple sample types



Protein purification



Pierce beads and KingFisher instruments



Protein detection



Electrophoresis or western blot

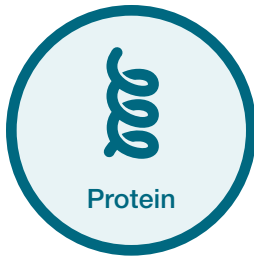


Protein analysis



Mass spectrometry

Recommended kits



Thermo Scientific™ Pierce™ magnetic agarose beads

- **High binding**—up to 100-fold greater binding capacity than traditional magnetic beads
- **More choices**—multiple ligands available for different purification strategies, including immobilized protein A/G, Ni-NTA, glutathione, and anti-FLAG
- **Automation-compatible**—can be used with magnetic particle processors for higher-throughput applications
- **Flexible**—can scale up or down as needed using adaptable protocols

Learn more at thermofisher.com/mag-agarose

Additional KingFisher applications

mRNA

Target and capture the mRNA transcriptome from an extremely wide variety of crude starting samples using Invitrogen™ Dynabeads™ mRNA DIRECT™ kits. These kits are designed for simple and rapid isolation of pure, intact poly(A) RNA directly from the crude lysate of animal and plant cells and tissues. The isolated mRNA is suitable for use in all downstream applications.

- **Fast**—15 minute procedure yields pure, intact mRNA
- **Sensitive**—enables cDNA synthesis and cDNA library construction from ultrasmall starting samples

Plant DNA or RNA

Use the Applied Biosystems™ MagMAX™ Plant DNA and RNA kits for automation-ready purification of DNA and RNA from a wide variety of plant species.

- Purification of total RNA from a wide variety of plant species and tissue types, including plant fungus
- Purified RNA is free of proteins, nucleases, and other contaminants or inhibitors
- Optimized for the isolation of DNA from 10–100 mg plant samples

Recommended kits



Dynabeads mRNA DIRECT kits

Sample type	Blood, cells, FFPE and fixed samples, liquid samples (e.g., serum), plant samples, RNA, tissue, viral samples, yeast
Sample input volume	Up to 20 x 10 ⁶ cells 2–200 mg animal tissue 4–400 mg plant tissue
Yield	2 µg of mRNA per 1 mg of Dynabeads oligo(dT)
Elution volume	10–100 µL
Total processing time	15 min
Reactions (rxn)	20 or 40 rxn
Cat. No.	61011, 61012



MagMAX Plant DNA kit and RNA kit

	DNA	RNA
Sample type	Plant tissue	
Sample input volume	Up to 100 mg	
Yield	Varies based on starting material	
Total processing time	<40 min for DNA	Up to 75 min for RNA
Reactions (rxn)	96 or 384 rxn	
Cat. No.	A32549, A32580	A33784, A33899

Customize your KingFisher system

Customize your protocols

Thermo Scientific™ BindIt™ Software allows you to easily create, modify, and store your protocols.

- Included with purchase of your KingFisher instrument
- Modify prewritten protocols or create your own to handle more applications

Search our extensive library of automated protocols at thermofisher.com/kingfisherprotocols

Interchangeable magnetic heads

The magnetic head can be easily switched without tools, depending on your plate setup, allowing you to run large or small volumes.

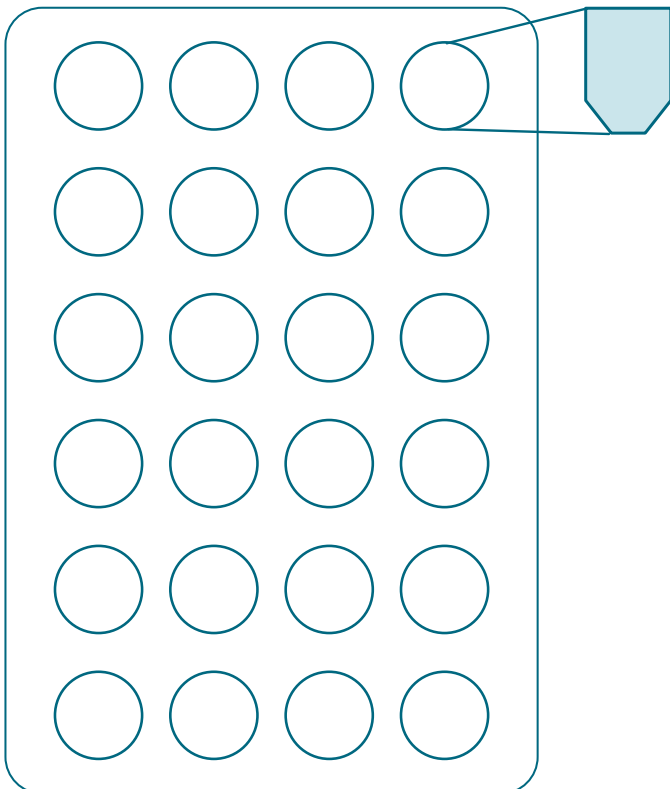


KingFisher plate formats

KingFisher instruments support a 24- or 96-well plate format for greater flexibility of input volume.

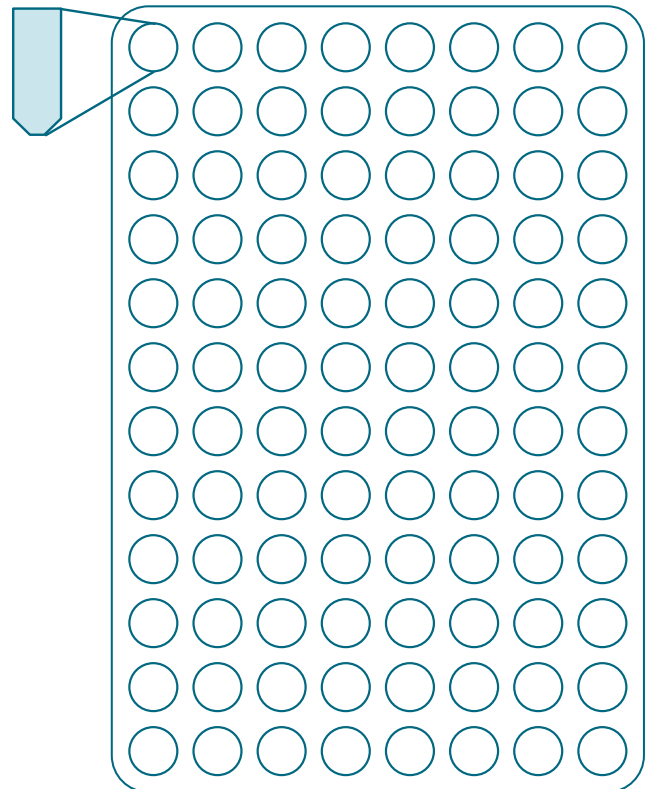
24 deep-well plates

200–5,000 μL



96 deep-well plates

50–1,000 μL



KingFisher plastics for KingFisher instruments

Designed for KingFisher instruments

Both the yield and quality of isolated protein or nucleic acid are significantly improved with special plates and tip combs designed for KingFisher systems.

- Made of polypropylene
- Low binding affinity for biomolecules, ideal for magnetic particle processing
- Sterile plastics come with a purity certificate and are guaranteed to be free of RNases, DNases, and contamination from DNA or endotoxins

KingFisher instrument:	Duo Prime	Flex	Apex	Presto	Cat. No.
Plastics for 96 deep-well format					
KingFisher Apex 96 combi tip comb			✓		97002570
KingFisher 96 deep-well plate, barcoded			✓		95040450B
KingFisher 96 deep-well plate, sterile, barcoded			✓		95040460B
KingFisher 96 tip comb for deep-well magnet, barcoded			✓		97002534B
KingFisher 96 deep-well tip comb and plate, sterile, barcoded			✓		97002820B
Nunc 96 storage tubes*			✓		374086
KingFisher 96 deep-well plate	✓	✓		✓	95040450
KingFisher 96 deep-well plate, sterile	✓	✓		✓	95040460
KingFisher 96 tip comb for deep-well magnet		✓		✓	97002534
KingFisher 96 deep-well tip comb and plate, sterile		✓		✓	97002820
Plastics for 96 standard and PCR formats					
KingFisher Apex 96 PCR tip comb			✓		97002560
KingFisher 96 microplate (200 µL), barcoded			✓		97002540B
KingFisher 96 tip comb for KingFisher magnets, barcoded			✓		97002524B
PCR plate, 96 deep-well, clear, clear wells*			✓		AB2396
PCR plate, 96 deep-well, semi-skirted, low profile, clear wells*			✓		AB2496
KingFisher 96 microplate (200 µL)		✓		✓	97002540
PCR plate, skirted (or similar PCR plate)*		✓			AB1300
KingFisher 96 tip comb for KingFisher magnets		✓			97002524
KingFisher 96 tip comb for PCR magnets		✓			97002514

* Recommended plastics.

KingFisher plastics for KingFisher instruments

KingFisher instrument:	Duo Prime	Flex	Apex	Presto	Cat. No.
Plastics for 24 deep-well format					
KingFisher Apex 24 combi tip comb			✓		97002580
KingFisher 24 deep-well plate, barcoded			✓		95040470B
KingFisher 24 deep-well plate, sterile, barcoded			✓		95040480B
KingFisher 24 deep-well tip comb and plate, barcoded			✓		97002610B
KingFisher 24 deep-well tip comb and plate, sterile, barcoded			✓		97002620B
Nunc 24 storage tubes*			✓		374323
KingFisher 24 deep-well plate	✓	✓		✓	95040470
KingFisher 24 deep-well plate, sterile	✓	✓		✓	95040480
KingFisher 24 deep-well tip comb and plate		✓		✓	97002610
KingFisher 24 deep-well tip comb and plate, sterile		✓		✓	97002620
Plastics available for Duo Prime instrument only					
KingFisher Duo Prime 6-tip combs and 24 deep-well plate (12 pieces of 24 deep-well plates, each including 4 tip combs)	✓				97003510
KingFisher Duo Prime 12-tip comb, for 96 deep-well plate	✓				97003500
KingFisher Duo Prime 12-tip elution strip	✓				97003520
KingFisher Duo Prime elution strip cap for 12 pin magnet	✓				97003540
KingFisher combi pack for microtiter 96 deep-well plate, includes 8 each of: <ul style="list-style-type: none"> • 96 deep-well plate • 12-tip comb • Elution strip • Cap for elution strip 	✓				97003530

* Recommended plastics.

KingFisher instrument services and support



Instrument and application specialists

Whether servicing your KingFisher purification system or addressing your workflow application questions, our more than 1,000 trained professionals make up the industry's largest network, ready to assist you when you need it.



Quick-start training

The KingFisher system includes SmartStart Orientation to help get you up and running quickly in your lab. The orientation includes basic familiarization and setup with online instrument management and includes on-site training with standard kits.



Warranty and service plans

Every KingFisher system comes with a one-year warranty. Extended-coverage service plans are also available at the time of instrument purchase. Whether your laboratory requires our highest service levels and adherence to stringent regulatory guidelines, or you need to maximize performance with a limited budget—or anything in between—we'll work with you to develop a solution that best suits your needs.

Find out more at [thermofisher.com/instrumentservices](https://www.thermofisher.com/instrumentservices) and [thermofisher.com/contactus](https://www.thermofisher.com/contactus)

Ordering information

Product	Cat. No.
KingFisher instruments	
KingFisher Apex Purification System with 96 PCR Head**	5400910
KingFisher Apex Purification System with 96 Combi Head**	5400920
KingFisher Apex Purification System with 96 Deep-Well Head**	5400930
KingFisher Apex Purification System with 24 Combi Head**	5400940
KingFisher Flex Purification System with 96 PCR Head**	5400610
KingFisher Flex Purification System with 96 KingFisher Head**	5400620
KingFisher Flex Purification System with 24 Deep-Well Head**	5400640
KingFisher Flex Purification System with 96 Deep-Well Head**	5400630
KingFisher Duo Prime Purification System	5400110
KingFisher Presto Purification System with 24 Deep-Well Head**	5400840
KingFisher Presto Purification System with 96 Deep-Well Head**	5400830
Nucleic acid purification products	
KingFisher Duo-Ready DNA Ultra 2.0 Prefilled Plates	A36584
KingFisher Flex-Ready DNA Ultra 2.0 Prefilled Plates	A36586
MagMAX <i>mir</i> Vana Total RNA Isolation Kit	A27828
MagMAX DNA Multi-Sample Ultra 2.0 Kit*	A36570
MagMAX Saliva gDNA Isolation Kit*	A39060
MagMAX Cell-Free DNA Isolation Kit*	A29319
MagMAX Cell-Free Total Nucleic Acid Isolation Kit*	A36716
MagMAX FFPE DNA/RNA Ultra Kit*	A31881
MagMAX Microbiome Ultra Nucleic Acid Isolation Kit*	A42357, A42358
MagMAX Viral/Pathogen Nucleic Acid Isolation Kit*	A42352
MagMAX Viral/Pathogen Ultra Nucleic Acid Isolation Kit*	A42356
MagMAX Plant DNA Isolation Kit*	A32549
MagMAX Plant RNA Isolation Kit	A33784
MagMAX Wastewater Ultra Nucleic Acid Isolation Kit	A52606
MagMAX Wastewater Ultra Nucleic Acid Isolation Kit with Virus Enrichment	A52610
Dynabeads mRNA DIRECT Purification Kit	61011
Immunoprecipitation and protein products	
Dynabeads Protein A	10002D
Dynabeads Protein G	10004D
Dynabeads M-280 Sheep Anti-Mouse IgG	11202D
Dynabeads M-280 Sheep Anti-Rabbit IgG	11204D
Dynabeads M-280 Streptavidin	11206D
Dynabeads His-Tag Isolation and Pulldown	10103D
Pierce Streptavidin Magnetic Beads	88817
Pierce Protein A/G Magnetic Beads	88803
Pierce Protein A/G Magnetic Agarose Beads	78609
Pierce Ni-NTA Magnetic Agarose Beads	78605
Pierce Anti-DYKDDDDK Magnetic Agarose Beads	A36797
Pierce Glutathione Magnetic Agarose Beads	78601
SMART Digest kits for peptide mapping and quantitation	60109-101-MB-60109-109-MB
SMART Digest IA kits for peptide quantitation	60110-103-60112-104

* May be purchased as individual bulk reagents.

** For Laboratory Use.

More beads, more applications

There are many more magnetic bead kits available that can be automated on KingFisher instruments. Find the right kit for your application at thermofisher.com/kingfisherkits

 Learn more at thermofisher.com/kingfisher