

Image Cover Sheet

CLASSIFICATION

UNCLASSIFIED

SYSTEM NUMBER

500693



TITLE

USER'S GUIDE FOR SHIPINT - A COMPUTER PROGRAM TO COMPUTE TWO SHIP INTERACTION
IN WAVES

System Number:

Patron Number:

Requester:

Notes:

DSIS Use only:

Deliver to:



National Defence
Research and
Development Branch

Défense nationale
Bureau de recherche
et développement

DREA CR/96/445

**USER'S GUIDE FOR SHIPINT —
A COMPUTER PROGRAM TO COMPUTE
TWO SHIP INTERACTION IN WAVES**

by
C.C. Hsiung — Y.J. He

CENTRE for MARINE VESSEL DESIGN and RESEARCH
Technical University of Nova Scotia
P.O. Box 1000, Halifax, Nova Scotia, Canada
B3J 2X4

CONTRACTOR REPORT

Prepared for

**Defence
Research
Establishment
Atlantic**



**Centre de
Recherches pour la
Défense
Atlantique**

Canada



National Defence
Research and
Development Branch

Défense nationale
Bureau de recherche
et développement

DREA CR/96/445

USER'S GUIDE FOR **SHIPINT** —
A COMPUTER PROGRAM TO COMPUTE
TWO SHIP INTERACTION IN WAVES

by
C.C. Hsiung — Y.J. He

CENTRE for MARINE VESSEL DESIGN and RESEARCH
Technical University of Nova Scotia
P.O. Box 1000, Halifax, Nova Scotia, Canada
B3J 2X4

Scientific Authority

Kevin McTaggart
Kevin McTaggart

W7707-5-3254/01-HAL
Contract Number

August 1996

CONTRACTOR REPORT

Prepared for

Defence
Research
Establishment
Atlantic



Centre de
Recherches pour la
Défense
Atlantique

Canada

User's Guide for SHIPINT - A Computer Program to Compute Two Ship Interaction in Waves

Abstract

The computer program SHIPINT has been developed for the coupled motion computations of two adjacent ships advancing on a parallel course in regular or irregular waves. The code is written in Fortran 77 ANSI.

The coupled motion computations use the three-dimensional panel method, and the zero-speed Green function with a simple forward speed correction. With this method, the field points and source points are all distributed on the wetted surfaces of two ships (ship-a and ship-b). The hydrodynamic forces, wave exciting forces and motions are computed based on two ship interaction. The double body flow model is applied to obtain the steady flow disturbance potential and velocity distributions on the wetted surface on ship-a and ship-b by the Hess-Smith method. The m-terms are computed by the integral equation method based on double body flow of two ship interaction. The approximate m-terms can also be used in this program. Schmitke's method is used to compute the viscous roll damping coefficients for ship-a on its own, and ship-b on its own; therefore, the viscous interaction effect is not considered. The spectral analyses are carried out for ship-a and ship-b.

Input and output files, and examples are also presented and described in detail in this guide.

Résumé

Le programme SHIPINT a été développé pour les calculs des mouvements couplés de deux navires avançant côte à côte sur des trajectoires parallèles en houle régulière ou irrégulière. Ce code est écrit en Fortran 77 norme ANSI.

Les calculs des mouvements couplés utilisent la méthode par facettes tri-dimensionnelles, la fonction de Green du problème sans vitesse d'avance et une correction simple pour la vitesse d'avance. Avec cette méthode les points de contrôle sont tous répartis sur la partie mouillée des carènes des deux navires (navire a et navire b). Les efforts hydrodynamiques, les efforts dus à la houle et les mouvements des navires sont calculés en prenant en compte l'interaction entre les deux navires. Un calcul double modèle est effectué pour obtenir le potentiel de perturbation stationnaire ainsi que la distribution de la vitesse sur la surface mouillée du navire a et du navire b (méthode de Hess et Smith). Les "m-terms" sont calculés par une méthode intégrale basée sur l'écoulement obtenu pour le problème du double modèle pour les deux navires en interaction. Les "m-terms" ainsi approximatés peuvent aussi être utilisés par ce programme. On utilise la méthode de Schmitke pour calculer les coefficients d'amortissement en roulis pour chacun des deux navires pris séparément. L'effet visqueux de l'interaction n'est pas pris en compte. Les analyses spectrales sont faites pour le navire a et pour le navire b.

Ce manuel présente aussi des fichiers de données et de résultats ainsi que des exemples décrits en détail.

Contents

SUMMARY	ii
1 Introduction	1
2 Coordinate Systems and Two Ship Motions	2
3 Flow Chart	3
4 Input Data File Description	4
4.1 shipint.in	4
4.2 panel_a.in and panel_b.in	9
4.3 vdamp_a.in and vdamp_b.in	13
4.4 spectrum.in	21
5 Output Data File Description	22
REFERENCES	30
Appendix A. Input File Example	31
Appendix B. Output File Example	32

1 Introduction

This document is a User's Guide for a computer program called SHIPINT, which computes the motions of two ships interacting in waves.

When using this document, reference should be made to the SHIPINT Final Report [1], PANELGEN User's Guide [2], and SMCA4 Reports [3][4].

2 Coordinate Systems and Two Ship Motions

Three steady moving coordinate systems $oxyz$, $o_a-x_a y_a z_a$ and $o_b-x_b y_b z_b$ are used as shown in Fig.1. The coordinate systems are moving in the positive x direction with a ship steady forward speed U . The planes, xoy , $x_a o_a y_a$ and $x_b o_b y_b$, coincide with the calm water surface, the planes yoz and $y_a o_a z_a$ are at amidships of ship-a and the plane $y_b o_b z_b$ is at amidships of ship-b. The right-hand coordinate systems are used in this program.

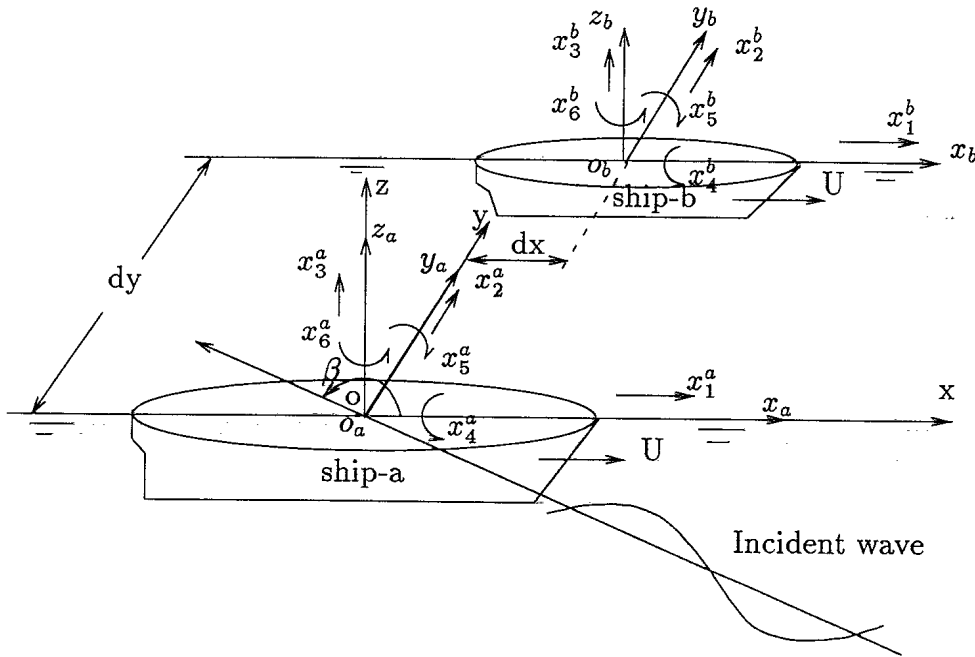


Figure 1: Coordinate Systems and Ship Motions

In Figure 1, x_1^a is the surge motion, x_2^a sway, x_3^a heave, x_4^a roll, x_5^a pitch and x_6^a yaw for ship-a and x_1^b is the surge motion, x_2^b sway, x_3^b heave, x_4^b roll, x_5^b pitch and x_6^b yaw for ship-b, respectively. The incident wave propagation direction is also shown in Fig.1, where β is the heading angle between the wave propagation direction and the positive x -axis direction.

3 Flow Chart

The flow chart of the program SHIPINT is shown in Figure 3.

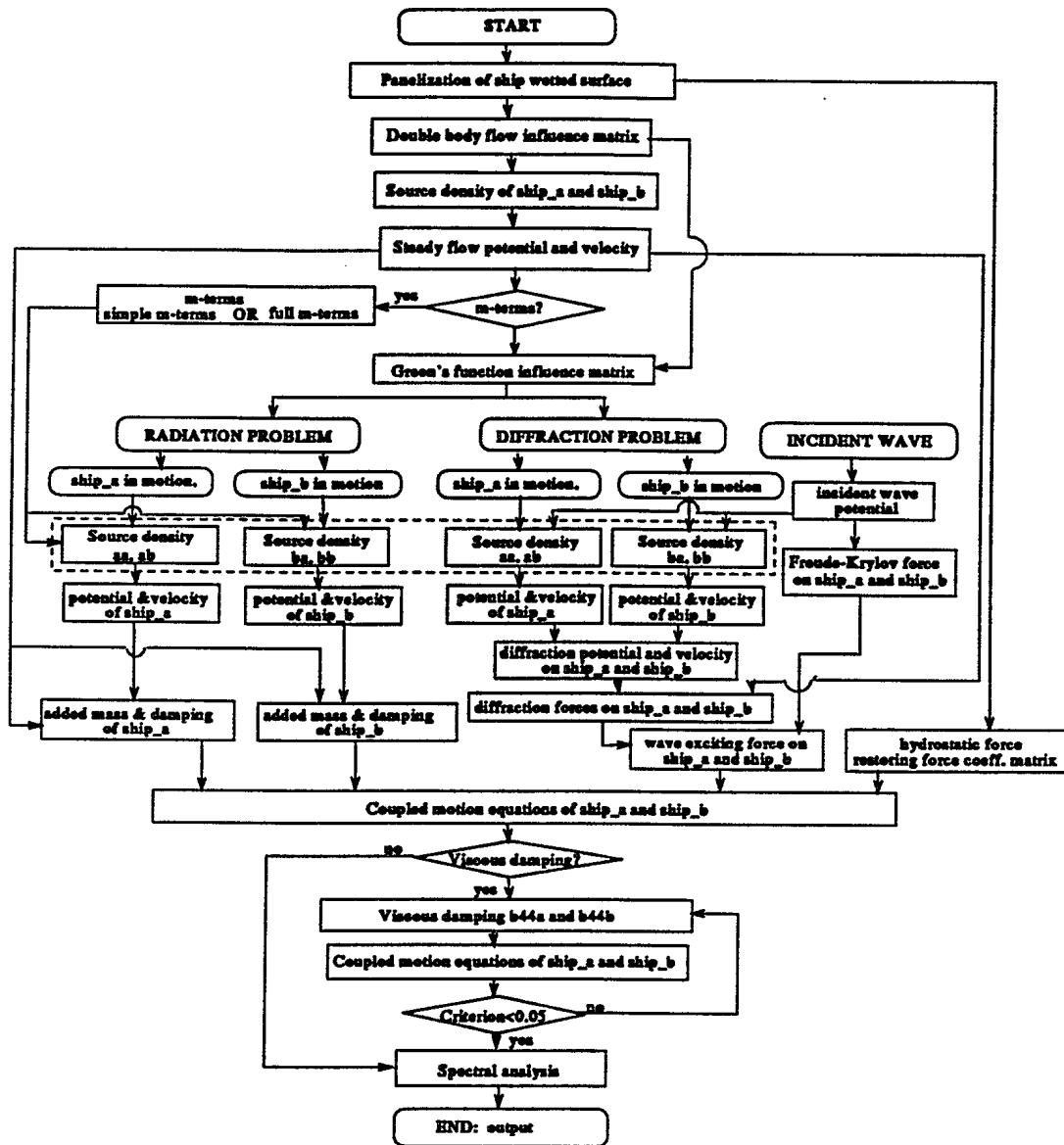


Figure 2: Flow Chart of SHIPINT

4 Input Data File Description

There are six input data files, **shipint.in**, **panel_a.in**, **panel_b.in**, **vdamp_a.in**, **vdamp_b.in** and **spetrum.in**. The **shipint.in** is for two ship principal particulars, centre of gravity, moments of inertia, separation distance, incident wave information and controlling the computation of m-terms and viscous roll damping coefficients. The **panel_a.in** and **panel_b.in** are the geometrical information of panels for ship-a and ship-b. The **vdamp_a.in** and **vdamp_b.in** are the input data of viscous roll damping coefficient computation for ship-a and ship-b. the **spetrum.in** is the irregular wave parameter for spectral analysis.

At the beginning of the program, two parameters must be determined in the parameter statement:

```
parameter(maxn_panel = 220, maxn_panel = 320)
```

maxn_panel : total number of panels on the whole wetted surface for the ship with the greatest number of panels.
maxn_node : total number of nodal points on the whole wetted surface for the ship with the greatest number of nodal points.

If the actual panel number or nodal number exceed the specified default values (*maxn_panel* = 220, *maxn_panel* = 320), the parameters in above statement need to be modified accordingly.

4.1 shipint.in

The file **shipint.in** provides the necessary data for the ship's principal dimensions for two ships, the regular incident wave parameters and computation condition. In the file **shipint.in**, the following information must be provided:

Record(a), Date of Computation

date (alphanumeric characters)

date : date of computation, up to 20 alphanumeric characters with single-quotation marks, e.g. 'May 17, 1996'

Record(b), Ship-a Principal Particulars

namea, *filea* (alphanumeric characters)
sla, *sba*, *sta*, *vola*, *cba* (5 real numbers)
xga, *yga*, *zga* (3 real numbers)
ri44a, *ri55a*, *ri66a* (3 real numbers)

namea : ship-a identification, up to 80 alphanumeric characters
with single-quotation marks, e.g. 'AOR'
filea : the input data file of panel information for ship-a
sla : ship-a length between perpendiculars (*m*)
sba : ship-a beam (*m*)
sta : ship-a draught (*m*)
vola : volume displacement of the ship-a (m^3)
cba : block coefficient of ship-a
xga : x-coordinate of c.g. of ship relative to midships (*m*),
in $o_a-x_a y_a z_a$ coordinate system.
yga : y-coordinate of c.g. of ship relative to centerline (*m*)
in $o_a-x_a y_a z_a$ coordinate system.
zga : z-coordinate of c.g. of ship relative to calm waterline (*m*)
in $o_a-x_a y_a z_a$ coordinate system.
ri44a : roll radius of gyration of the ship-a (*m*),
in $o_a-x_a y_a z_a$ coordinate system.
ri55a : pitch radius of gyration of the ship-a (*m*),
in $o_a-x_a y_a z_a$ coordinate system.
ri66a : yaw radius of gyration of the ship-a (*m*),
in $o_a-x_a y_a z_a$ coordinate system.

Record(c), Ship-b Principal Particulars

nameb, *fileb* (alphanumeric characters)
slb, *sbb*, *stb*, *volb*, *cbb* (5 real numbers)
xgb, *ygb*, *zgb* (3 real numbers)
ri44b, *ri55b*, *ri66b* (3 real numbers)

nameb : ship-b identification, 80 alphanumeric characters
with single-quotation marks, e.g. 'MCDV'
fileb : the input data file of panel information for ship-b
slb : ship-b length between perpendiculars (*m*)
sbb : ship-b beam (*m*)

- stb* : ship-b draught (*m*)
- volb* : volume displacement of the ship-b (m^3)
- cbb* : block coefficient of ship-b
- xgb* : x-coordinate of c.g. of ship relative to midships (*m*),
in $o_b-x_b y_b z_b$ coordinate system.
- ygb* : y-coordinate of c.g. of ship relative to centerline (*m*)
in $o_b-x_b y_b z_b$ coordinate system.
- zgb* : z-coordinate of c.g. of ship relative to calm waterline (*m*)
in $o_b-x_b y_b z_b$ coordinate system.
- ri44b* : roll radius of gyration of the ship-b (*m*),
in $o_b-x_b y_b z_b$ coordinate system.
- ri55b* : pitch radius of gyration of the ship-b (*m*),
in $o_b-x_b y_b z_b$ coordinate system.
- ri66b* : yaw radius of gyration of the ship-b (*m*),
in $o_b-x_b y_b z_b$ coordinate system.

Record(d), Location of ship-b relative to ship-a

dy, dx (2 real numbers)

- dy* : transverse location of ship-b relative to ship-a (+port)(see Fig.1)
- dx* : longitudinal location of ship-b relative to ship-a (+forward)(see Fig.1)

Record(e), ship speed

U (real number)

U : steady forward speed for both ship-a and ship-b(*m/s*)

Record(f), Incident Wave Parameters (Wave Heading Angles)

- nangle* (integer)
- wangle(1)* (real number)
- wangle(2)* (real number)
-
-
- wangle(nangle)* (real number)

nangle : total number of incident wave headings

wangle(i) : wave direction (degrees) relative to ship speed (180 degrees for head seas), $i=1,2,\dots,nangle$

Record(g), Incident Wave Parameters (Wave Frequencies)

nw1 (integer)
wslr(1) (real number)
wslr(2) (real number)

wslr(nw1) (real number)

nwl : total number of wave length to ship length ratios
wslr(i) : wave length to ship length ratios, $i=1,2,\dots,nwl$

Record(h), Control Parameters

kdamp, *kmterm* (2 integers)

kdamp : if $kdamp=1$, the viscous damping coefficient computation is performed; if $kdamp=0$, the viscous damping coefficient computation is not performed.

kmterm : if $kmterm=1$, the double body m-term effect computation is performed; if $kmterm=0$, the simplified m-term effect computation is performed.

As an example, **shipint.in** for AOR and MCDV is given as follows:

Record (a) : May 28, 1996
 Record (b1) : 'AOR' 'panel.a.in'
 Record (b2) : 162.46 23.16 9.144 20833.82 0.6
 Record (b3) : 0.0 0.0 -0.8
 Record (b4) : 9.032 40.615 40.615
 Record (c1) : 'MCDV' 'panel.b.in'
 Record (c2) : 52.00 10.76 3.4 1065.89 0.5603
 Record (c3) : -0.86 0.0 1.01
 Record (c4) : 3.67 14.56 14.56
 Record (d) : 33.92 0.0
 Record (e) : 5.144
 Record (f1) : 7
 Record (f2) : 45.
 Record (f3) : 90.
 Record (f4) : 135.
 Record (f5) : 180.
 Record (f6) : 225.
 Record (f7) : 270.
 Record (f8) : 315.
 Record (g1) : 13
 Record (g2) : 0.2
 Record (g3) : 0.35
 Record (g4) : 0.5
 Record (g5) : 0.65
 Record (g6) : 0.8
 Record (g7) : 0.95
 Record (g8) : 1.1
 Record (g9) : 1.25
 Record (g10) : 1.4
 Record (g11) : 1.55
 Record (g12) : 1.7
 Record (g13) : 1.85
 Record (g14) : 2.0
 Record (h) : 1 1

4.2 panel_a.in and panel_b.in

The input data files **panel_a.in** for ship-a and **panel_b.in** for ship-b provide the information of panels and nodal points. These two data files have the same format.

The mean wetted hull surface of a ship is divided into a finite number of quadrilateral panels. The nodes are arranged in such a way that if we look at the panels from outside of the hull, the nodal order is clockwise as shown in Fig.3.

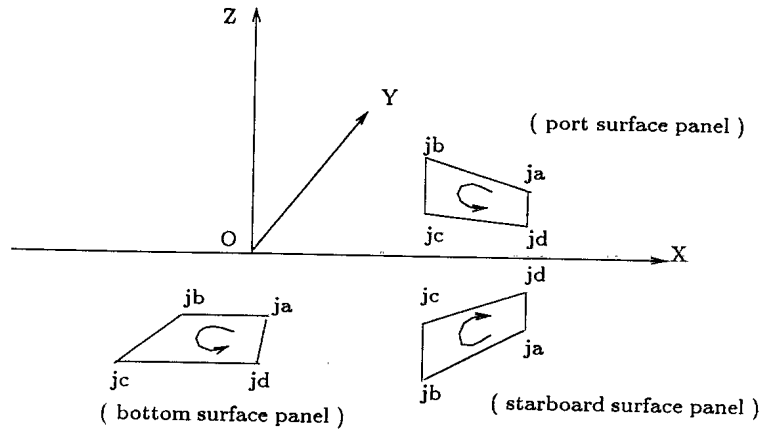


Figure 3: Connectivity Information on Panels

In **shipint_2.in** and **shipint_3.in**, the following data must be provided:

Record(a), Nodes and Panels on Ship Surface

np, *ne* (2 integers)

1	x(1)	y(1)	z(1)	(1 integer, 3 real numbers)
2	x(2)	y(2)	z(2)	
3	x(3)	y(3)	z(3)	
..	
I	x(I)	y(I)	z(I)	
..	
np	x(np)	y(np)	z(np)	

1	j(1,1)	j(2,1)	j(3,1)	j(4,1)	(5 integers)
2	j(1,2)	j(2,2)	j(3,2)	j(4,2)	
3	j(1,3)	j(2,3)	j(3,3)	j(4,3)	
..	
J	j(1,J)	j(2,J)	j(3,J)	j(4,J)	
..	
ne	j(1,ne)	j(2,ne)	j(3,ne)	j(4,ne)	

np : total number of nodes
ne : total number of panels
x(I) : nodal x-coordinates relative to midships (*m*)
y(I) : nodal y-coordinates relative to centerline (*m*)
z(I) : nodal z-coordinates relative to calm waterline (*m*)
j(I, J) : connectivity information, providing four nodal indices on each panel. The nodes are arranged as shown in Figure 3. J: panel index

As an example, **panel_a.in** for AOR is given as follows:

Record (a)	:	252	200		
Record (a1,1)	:	1	81.250000	0.000000	0.000000
Record (a1,2)	:	2	73.125000	-1.95121	0.000000
Record (a1,3)	:	3	65.000000	-3.81250	0.000000
Record (a1,4)	:	4	56.875000	-5.61890	0.000000
Record (a1,5)	:	5	48.750000	-7.23672	0.000000
Record (..)	:

Record (..)	:
Record (..)	:
Record (..)	:
Record (a1,248)	: 248	-48.750000	0.000000	-9.14634
Record (a1,249)	: 249	-56.875000	0.000000	-9.14634
Record (a1,250)	: 250	-65.000000	0.000000	-9.02439
Record (a1,251)	: 251	-70.687500	0.000000	-6.70731
Record (a1,252)	: 252	-70.579269	0.000000	-6.67683

Record (a2,1)	: 1	1	22	23	2
Record (a2,2)	: 2	2	23	24	3
Record (a2,3)	: 3	3	24	25	4
Record (a2,4)	: 4	4	25	26	5
Record (a2,5)	: 5	5	26	27	6
Record (..)	:
Record (..)	:
Record (..)	:
Record (..)	:
Record (a2,196)	: 196	226	227	248	247
Record (a2,197)	: 197	227	228	249	248
Record (a2,198)	: 198	228	229	250	249
Record (a2,199)	: 199	229	230	251	250
Record (a2,200)	: 200	230	231	252	251

As an example, **panel_b.in** for MCDV is given as follows:

Record (a)	: 312 212			
Record (a1,1)	: 1	24.200001	0.000000	-3.400000
Record (a1,2)	: 2	23.400000	0.000000	-3.400000
Record (a1,3)	: 3	20.799999	0.000000	-3.400000
Record (a1,4)	: 4	18.200001	0.000000	-3.400000
Record (a1,5)	: 5	15.600000	0.000000	-3.400000
Record (..)	:
Record (..)	:
Record (..)	:
Record (..)	:
Record (a1,308)	: 308	-13.000000	0.500000	-2.600000
Record (a1,309)	: 309	-15.600000	0.500000	-2.150000
Record (a1,310)	: 310	-18.200001	0.500000	-1.720000

Record (a1,311)	:	311	-20.799999	0.400000	-1.250000
Record (a1,312)	:	312	-23.400000	0.000000	-1.100000

Record (a2,1)	:	1	1	2	15	14
Record (a2,2)	:	2	2	3	16	15
Record (a2,3)	:	3	3	4	17	16
Record (a2,4)	:	4	4	5	18	17
Record (a2,5)	:	5	5	6	19	18
Record (..)	:
Record (..)	:
Record (..)	:
Record (..)	:
Record (a2,208)	:	208	299	307	308	300
Record (a2,209)	:	209	300	308	309	301
Record (a2,210)	:	210	301	309	310	302
Record (a2,211)	:	211	302	310	311	303
Record (a2,212)	:	212	303	311	312	304

4.3 **vdamp_a.in** and **vdamp_b.in**

The input data files **vdamp_a.in** for ship-a and **vdamp_b.in** for ship-b provide all the necessary data to compute the bilge keel, eddy-making, friction, lifting and appendage damping coefficients, whenever available, and also the resultant viscous damping coefficient.

Record(a), Control Parameters

IBK, *IBE*, *IBF*, *IBA*, *IBL* (5 integers)

- IBK* : if *IBK* = 1, the bilge keel viscous roll damping coefficient is computed; if *IBK* = 0, the bilge keel viscous roll damping coefficient is not computed.
- IBE* : if *IBE* = 1, the eddy-making viscous roll damping coefficient is computed; if *IBE* = 0, the eddy-making viscous roll damping coefficient is not computed.
- IBF* : if *IBF* = 1, the friction viscous roll damping coefficient is computed; if *IBF* = 0, the friction viscous roll damping coefficient is not computed.
- IBA* : if *IBA* = 1, the appendage (other than bilge keel) viscous roll damping coefficient is computed; if *IBA* = 0, the appendage (other than bilge keel) viscous roll damping coefficient is not computed.
- IBL* : if *IBL* = 1, the lifting viscous roll damping coefficient of rudder and skeg is computed; if *IBL* = 0, the lifting viscous roll damping coefficient of rudder and skeg is not computed.

Record(b), Ship Parameters, Water Properties

ns, *ns0*, *ns1* (3 integers)

- ns* : total number of sections.
- ns0* : index of the section where the bilge keel starts.
- ns1* : index of the section where the bilge keel ends.

Record(c), Water Properties

rho, *mu* (2 real numbers)

- rho* : density of water (kg/m^3).
- mu* : kinematic viscosity of water (m^2/s).

Record(d), Bilge Keel Information

$b.k, bk.l$ (2 real numbers)

$b.k$: bilge keel breadth (m).
 $bk.l$: bilge breadth-length ratio.

Record(e1), Sectional Parameters

For sections $i = 1$ to ns :

$Ship_I(i), Ship_S(i), Ship_B(i), Ship_KG(i), Ship_d(i)$ (5 real numbers for each section)

- $Ship_I(i)$ the sectional shape identifier.
 for V or U-shaped section, $Ship_I = 1$.
 for full-almost rectangular section $Ship_I = 2$.
 for triangular section, $Ship_I = 3$.
- $Ship_S(i)$ wetted surface area at section i (m^2) (Figure 4).
- $Ship_B(i)$ sectional beam (m).
- $Ship_KG(i)$ height of ship's C.G. above the lowest point at each section (m).
- $Ship_d(i)$ sectional draught (m).

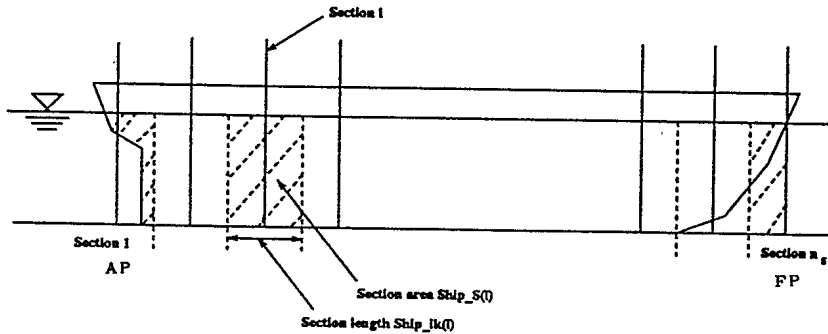


Figure 4: Sectional Length and Area

Record(e2), Sectional Parameters

For sections $i = 1$ to ns :

$Ship_rhat(i), Ship_a(i), Ship_r(i), Ship_rb(i), Ship_lk(i)$ (5 real numbers)

$Ship_rhat(i)$ distance from ship's C.G. to the point where eddies are shed, in the yz plane (m).

$Ship_a(i)$ the inclination angle (relative to vertical) of ship side at the section waterline (deg) (Figure 5).

$Ship_r(i)$ distance from C.G. to the center of the bilge keel at each section (m); if no bilge keel, set value to zero.

$Ship_rb(i)$ section bilge radius (m) (Figure 5).

$Ship_lk(i)$ section length (m) (Figure 4).

Record(e3), Sectional Parameters

For sections $i = 1$ to ns :

$Ship_G(i), Ship_ss(i), Ship_F_r(i), Ship_a_g(i)$ (4 real numbers)

$Ship_G(i)$ angle about CG between waterline and bilge keel root (rad) (Figure 6).

$Ship_ss(i)$ length of girth from the bilge keel root to waterline (m) (Figure 5).

$Ship_F_r(i)$ sectional dead-rise (m) (Figure 5).

$Ship_a_g(i)$ the angle made by the plane of the bilge keel with the straight line passing through C.G. and the bilge keel root (rad) (Figure 6).

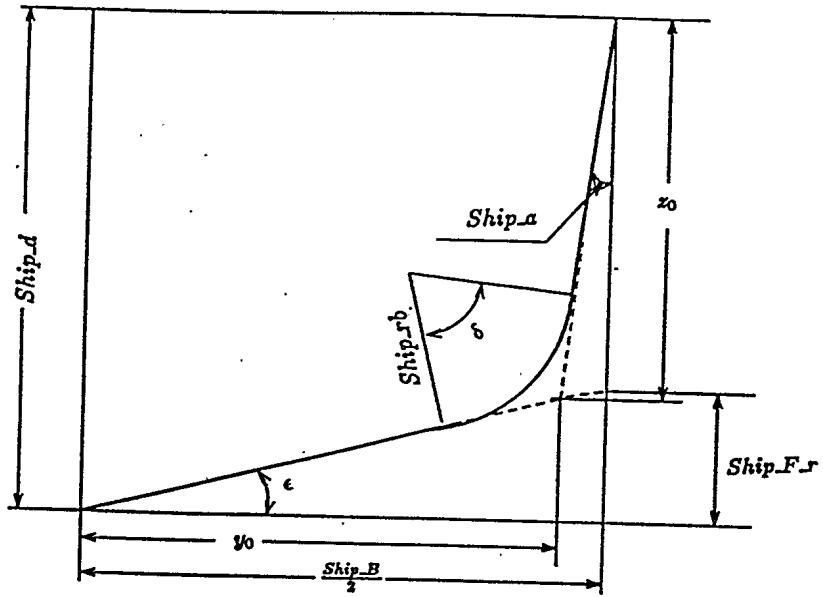


Figure 5: Sectional Parameters

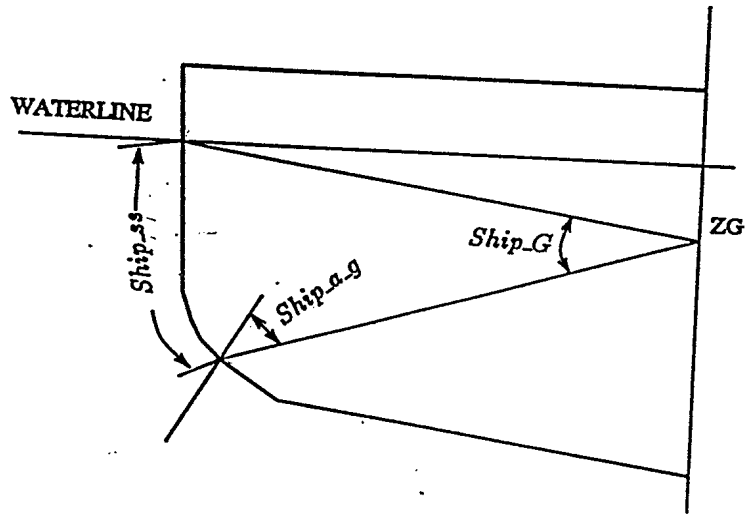


Figure 6: Bilge Keel Parameters

Record(f), Rudder and Deadwood Parameters

$b_s, h_{CG}, b_R, \sigma, S_R$ (5 real numbers)

b_s skeg span (m) (Figure 7).
 h_{CG} vertical distance of C.G. above waterline (m) (Figure 7).
 b_R rudder span (m) (Figure 7).
 σ skeg angular parameter (rad) (Figure 7).
 S_R rudder area of single side (m^2).

Record(g1), Parameters of Appendages Other Than Bilge Keel

na, c_n (1 integer, 1 real number)

na total number of appendages.
 c_n normal force coefficient for a flat plate inclined at a large angle to the flow. See Schmitke's work [3].

Record(g2), Parameters of Appendages Other than Bilge Keel

For appendage $i = 1$ to na :

$App_y(i), App_z(i), App_G(i), App_{C_e}(i), App_{C_r}(i), App_{Bar_B}(i)$ (6 real numbers)

$App_y(i)$ y -coordinate at root of appendage i (m) (Figure 8).
 $App_z(i)$ z -coordinate at root of appendage i (m) (Figure 8).
 $App_G(i)$ appendage dihedral angle (deg) (Figure 8)
 $App_{C_e}(i)$ end chord of appendage i (m) (Figure 9).
 $App_{C_r}(i)$ root chord of appendage i (m) (Figure 9).
 $App_{Bar_B}(i)$ span of appendage i (m) (Figure 9).

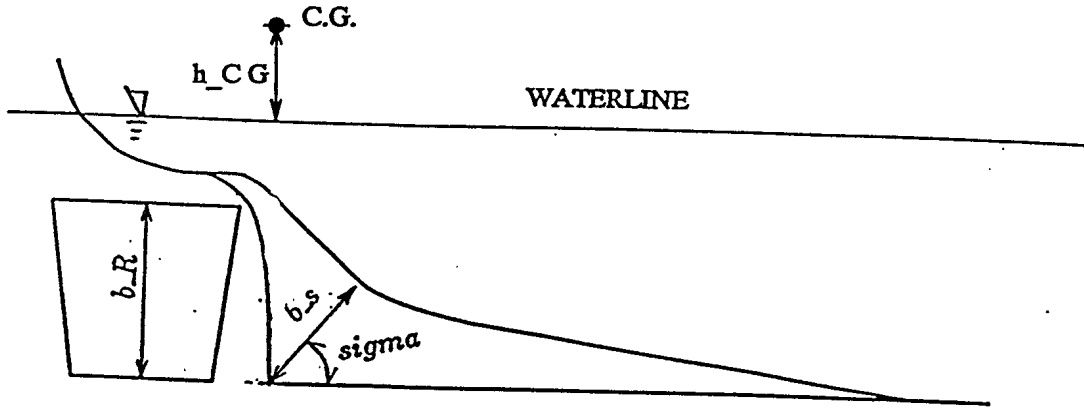


Figure 7: Skeg and Rudder Parameters

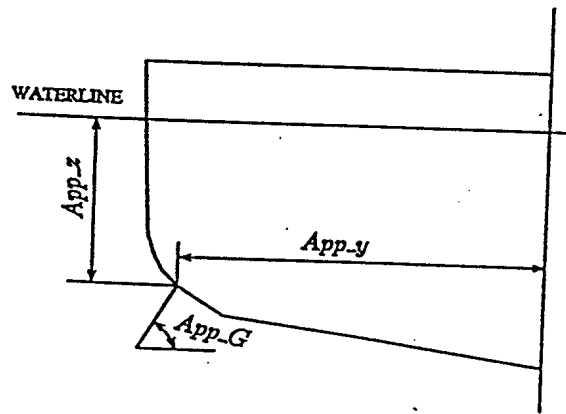


Figure 8: Appendage Parameters

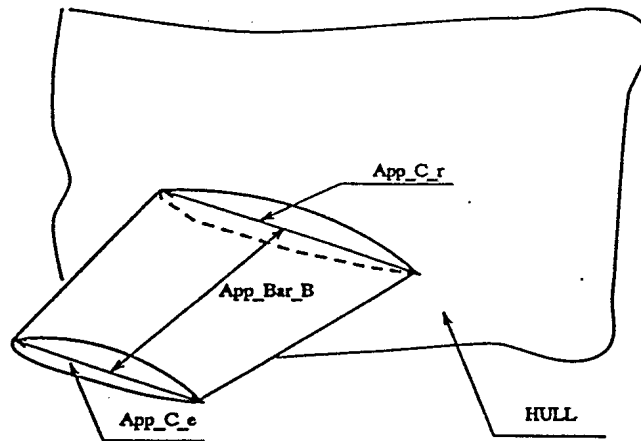


Figure 9: Appendage Parameter Example

The following is an example of the data file `vdamp_a.in` for AOR, $L = 162.46m$:

Record (a)	: 1	1	1	0	1
Record (b)	: 21	9	14		
Record (c)	: 999.099976	1.14E-06			
Record (d)	: 0.4	.0098			
Record (e1,1)	: 2	73.189	10.4	5.9	6.7
Record (e1,2)	: 2	151.752	12.9	8.2	7.2
Record (e1,3)	: 2	170.721	16.7	8.344	9.144
Record (..)	:
Record (..)	:
Record (e1,20)	: 2	123.93	3.9	8.344	9.144
Record (e1,21)	: 2	34.52	1.8	8.344	9.144
Record (e2,1)	: 5.9	63.	0.	0.65	4.0615
Record (e2,2)	: 8.2	49.	0.	3.05	8.123
Record (e2,3)	: 8.344	33.	0.	2.80	8.123
Record (..)	:
Record (..)	:
Record (e2,20)	: 8.344	10.	0.	1.0	8.123
Record (e2,21)	: 3.5	10.	0.	1.0	4.0615
Record (e3,1)	: 0.	0.	1.0	0.	
Record (e3,2)	: 0.	0.	0.9	0.	
Record (e3,3)	: 0.	0.	0.5	0.	

Record (..)	:	
Record (..)	:	
Record (..)	:	0.645	8.	0.4	0.	
Record (..)	:	0.645	8.3	0.4	0.	
Record (..)	:	
Record (..)	:	
Record (e3,20)	:	0.	0.	0.	0.	
Record (e3,21)	:	0.	0.	0.	0.	
Record (f)	:	0.	-0.8	7.315	0.	29.728
Record (g1)	:	0	0.			

The following is an example of the data file `vdamp_b.in` for MCDV, $L = 52.00m$:

Record (a)	:	1	1	1	0	1
Record (b)	:	21	9	14		
Record (c)	:	999.099976	1.14E-06			
Record (d)	:	0.35	.0269			
Record (e1,1)	:	3	12.402	9.4	1.81	0.8
Record (e1,2)	:	2	26.78	9.8	2.11	1.1
Record (e1,3)	:	2	28.236	10.	2.3	1.29
Record (..)	:
Record (..)	:
Record (e1,20)	:	2	18.92	2.48	4.41	3.4
Record (e1,21)	:	3	1.3	0.52	1.42	0.41
Record (e2,1)	:	1.81	34.	0.	0.36	1.3
Record (e2,2)	:	2.11	37.	0.	0.84	2.6
Record (e2,3)	:	2.3	4.	0.	0.8	2.6
Record (..)	:
Record (..)	:
Record (e2,20)	:	4.41	30.	0.	0.1	2.6
Record (e2,21)	:	1.42	30.	0.	0.1	1.3
Record (e3,1)	:	0.	0.	0.65	0.	
Record (e3,2)	:	0.	0.	0.65	0.	
Record (e3,3)	:	0.	0.	0.65	0.	
Record (..)	:	
Record (..)	:	
Record (..)	:	0.454	2.68	0.5	0.	
Record (..)	:	0.454	2.68	0.5	0.	
Record (..)	:	
Record (..)	:	
Record (e3,20)	:	0.	0.	0.	0.	

Record (e3,21)	: 0.	0.	0.	0.	
Record (f)	: 2.25	1.01	2.25	1.434	11.
Record (g1)	: 0	0.			

4.4 spectrum.in

The input data file **spectrum.in** provides the necessary data of spectral analysis for ship-a and ship-b. In **spectrum.in**, the data format is as following:

Record(a), Selection of sea spectrum

NH31 (1 integer)

NH31 :

1. ISSC two parameter spectrum;
2. JONSWAP spectrum;
3. Bretschneider spectrum;

Record(b), Wave height and period

HA, *T1* (2 real)

HA : significant wave height (*m*)

T1 : period corresponding to the average wave frequency of a spectrum (*s*)

As an example, the data file **spectrum.in** is as follows :

Record (a) :	3	
Record (b) :	3.7	8.123

5 Output Data File Description

The output file **shipint.out** contains ship principal dimensions, computation conditions, wave exciting forces, motion displacements and results from spectral analysis. The output data are as follows:

1. Non-dimensional wave exciting forces \bar{f}_j and their phase angles $(pf)_j$ (degrees):

$$\begin{aligned}\bar{f}_j &= |f_j|/\rho g \zeta_a L B, & (j = 1, 2, 3) \\ \bar{f}_j &= |f_j|/\rho g \zeta_a L^2 B, & (j = 4, 5, 6) \\ (pf)_j &= \tan^{-1}\left[-\frac{Im(f_j)}{Re(f_j)}\right], & (j = 1, 2, \dots, 6)\end{aligned}$$

2. Non-dimensional ship motion displacements \bar{x}_j and their phase angles $(pm)_j$ (degrees):

$$\begin{aligned}\bar{x}_j &= |x_j|/\zeta_a & (j = 1, 2, 3) \\ \bar{x}_j &= |x_j|/\zeta_a k & (j = 4, 5, 6) \\ (pm)_j &= \tan^{-1}\left[-\frac{Im(x_j)}{Re(x_j)}\right], & (j = 1, 2, \dots, 6)\end{aligned}$$

where

L :	ship length between perpendiculars (m)
B :	ship beam (m)
ρ :	water density (kg/m^3)
g :	gravitational acceleration (m/s^2)
ζ_a :	incident wave amplitude (m)
$k = \omega^2/g$:	wave number

and for ship-a,

$$L = sla, \quad B = sba, \quad V = vola, \quad \bar{x}_j = \bar{x}_j^a$$

for ship-b,

$$L = slb, \quad B = sbb, \quad V = volb, \quad \bar{x}_j = \bar{x}_j^b$$

3. Spectral Analysis – RMS displacements and accelerations:

$$D_j = \sqrt{(m_0)_j}$$

$$A_j = \sqrt{(m''_0)_j}$$

where, $(m_0)_j = \int_0^\infty [S_\eta(\omega_e)]_j d\omega_e$ and $(m''_0)_j = \int_0^\infty \omega_e^4 [S_\eta(\omega_e)]_j d\omega_e$.

The output file format is:

Record (a), Title of the Output File

```
*****
SHIPINT Program Output
*****
```

Record (b), General Specifications from Input

Date of Computation:

	<i>date</i>	(alphanumeric characters)
Form of ship-a :		
panel file :	<i>namea</i>	(alphanumeric characters)
ship-a particulars :	<i>filea</i>	(alphanumeric characters)
	<i>sla, sba, sta, vola, cba</i>	(5 real numbers)
	<i>xga, yga, zga</i>	(3 real numbers)
	<i>ri44a, ri55a, ri66a</i>	(3 real numbers)
Form of ship-b :		
panel file :	<i>nameb</i>	(alphanumeric characters)
ship-b particulars :	<i>fileb</i>	(alphanumeric characters)
	<i>slb, sbb, stb, volb, cbb</i>	(5 real numbers)
	<i>xgb, ygb, zgb</i>	(3 real numbers)
	<i>ri44b, ri55b, ri66b</i>	(3 real numbers)

- date* : user specified date of computation in **shipint.in**.
- namea* : ship-a identification, alphanumeric characters with single-quotation marks, e.g. 'AOR'
- filea* : the input data file of panel information for ship-a
- sla* : ship-a length between perpendiculars (*m*)
- sba* : ship-a beam (*m*)
- sta* : ship-a draught (*m*)
- vola* : volume displacement of the ship-a (*m*³)
- cba* : block coefficient of ship-a
- xga* : x-coordinate of c.g. of ship relative to midships (*m*), in *o_a-x_ay_az_a* coordinate system.
- yga* : y-coordinate of c.g. of ship relative to centerline (*m*) in *o_a-x_ay_az_a* coordinate system.

zga : z-coordinate of c.g. of ship relative to calm waterline (m)
in $o_a-x_a y_a z_a$ coordinate system.
ri44a : roll radius of gyration of the ship-a (m),
in $o_a-x_a y_a z_a$ coordinate system.
ri55a : pitch radius of gyration of the ship-a (m),
in $o_a-x_a y_a z_a$ coordinate system.
ri66a : yaw radius of gyration of the ship-a (m),
in $o_a-x_a y_a z_a$ coordinate system.

nameb : ship-b identification, alphanumeric characters
with single-quotation marks, e.g. 'MCDV'
fileb : the input data file of panel information for ship-b
slb : ship-b length between perpendiculars (m)
sbb : ship-b beam (m)
stb : ship-b draught (m)
volb : volume displacement of the ship-b (m^3)
cbb : block coefficient of ship-b
xgb : x-coordinate of c.g. of ship relative to midships (m),
in $o_b-x_b y_b z_b$ coordinate system.
ygb : y-coordinate of c.g. of ship relative to centerline (m)
in $o_b-x_b y_b z_b$ coordinate system.
zgb : z-coordinate of c.g. of ship relative to calm waterline (m)
in $o_b-x_b y_b z_b$ coordinate system.
ri44b : roll radius of gyration of the ship-b (m),
in $o_b-x_b y_b z_b$ coordinate system.
ri55b : pitch radius of gyration of the ship-b (m),
in $o_b-x_b y_b z_b$ coordinate system.
ri66b : yaw radius of gyration of the ship-b (m),
in $o_b-x_b y_b z_b$ coordinate system.

Record (c), Computation Condition

separation distance : dy, dx (2 real numbers)
ship speed : U (real numbers)

dy : transverse separation distance (see Fig.1)
dx : longitudinal separation distance (see Fig.1)

Record (d), Incident Wave Parameters

no	heading
1	wangle(1)
2	wangle(2)
...	
i	wangle(i)
...	
nangle	wangle(nangle)

no	Lambda/Lb
1	wslr(1)
2	wslr(2)
...	
i	wslr(i)
...	
nwl	wslr(nwl)

nangle : total number of incident wave headings
wangle(i) : wave heading angles in degrees, $i = 1, 2, \dots, nangle$
nwl : total number of wave length to ship length ratios
wslr(i) : wave length to ship length ratios, $i = 1, 2, \dots, nwl$

Record(e), Control Parameters

control parameters : *kdamp*, *kmterm* (2 integers)

kdamp : if *kdamp*=1, the viscous damping coefficient computation is performed; if *kdamp*=0, the viscous damping coefficient computation is not performed.
kmterm : if *kmterm*=1, the double body m-term effect computation is performed; if *kmterm*=0, the simplified m-term effect computation is performed.

The following records (Record (f), (g) and (h)) are dependent of wave heading angle. There will be *nangle* Record (f), (g) and (h) corresponding to each wave heading angle. We will only give the i^{th} records below.

Record (f1), Wave Exciting Force on Ship-aNon-dimensional Wave exciting forces for ship-a: (Heading = $wangle(i)$)

no.	$Lambda/Lb$	\bar{f}_1	\bar{f}_2	\bar{f}_3	\bar{f}_4	\bar{f}_5	\bar{f}_6
1	$wslr(1)$	$\bar{f}_1(1)$	$\bar{f}_2(1)$	$\bar{f}_3(1)$	$\bar{f}_4(1)$	$\bar{f}_5(1)$	$\bar{f}_6(1)$
2	$wslr(2)$	$\bar{f}_1(2)$	$\bar{f}_2(2)$	$\bar{f}_3(2)$	$\bar{f}_4(2)$	$\bar{f}_5(2)$	$\bar{f}_6(2)$
...							
i	$wslr(i)$	$\bar{f}_1(i)$	$\bar{f}_2(i)$	$\bar{f}_3(i)$	$\bar{f}_4(i)$	$\bar{f}_5(i)$	$\bar{f}_6(i)$
...							
nwl	$wslr(nwl)$	$\bar{f}_1(nwl)$	$\bar{f}_2(nwl)$	$\bar{f}_3(nwl)$	$\bar{f}_4(nwl)$	$\bar{f}_5(nwl)$	$\bar{f}_6(nwl)$

Record (f2), Phase Angles of Wave Exciting Force on Ship-a

no.	$Lambda/Lb$	pf1	pf2	pf3	pf4	pf5	pf6
1	$wslr(1)$	pf1(1)	pf2(1)	pf3(1)	pf4(1)	pf5(1)	pf6(1)
2	$wslr(2)$	pf1(2)	pf2(2)	pf3(2)	pf4(2)	pf5(2)	pf6(2)
...							
i	$wslr(i)$	pf1(i)	pf2(i)	pf3(i)	pf4(i)	pf5(i)	pf6(i)
...							
nwl	$wslr(nwl)$	pf1(nwl)	pf2(nwl)	pf3(nwl)	pf4(nwl)	pf5(nwl)	pf6(nwl)

Record (g1), Wave Exciting Force on Ship-bNon-dimensional Wave exciting forces for ship-b: (Heading = $wangle(i)$)

no.	$Lambda/Lb$	\bar{f}_1	\bar{f}_2	\bar{f}_3	\bar{f}_4	\bar{f}_5	\bar{f}_6
1	$wslr(1)$	$\bar{f}_1(1)$	$\bar{f}_2(1)$	$\bar{f}_3(1)$	$\bar{f}_4(1)$	$\bar{f}_5(1)$	$\bar{f}_6(1)$
2	$wslr(2)$	$\bar{f}_1(2)$	$\bar{f}_2(2)$	$\bar{f}_3(2)$	$\bar{f}_4(2)$	$\bar{f}_5(2)$	$\bar{f}_6(2)$
...							
i	$wslr(i)$	$\bar{f}_1(i)$	$\bar{f}_2(i)$	$\bar{f}_3(i)$	$\bar{f}_4(i)$	$\bar{f}_5(i)$	$\bar{f}_6(i)$
...							
nwl	$wslr(nwl)$	$\bar{f}_1(nwl)$	$\bar{f}_2(nwl)$	$\bar{f}_3(nwl)$	$\bar{f}_4(nwl)$	$\bar{f}_5(nwl)$	$\bar{f}_6(nwl)$

Record (g2), Phase Angles of Wave Exciting Force on Ship-b

no.	$Lambda/Lb$	pf1	pf2	pf3	pf4	pf5	pf6
1	$wslr(1)$	pf1(1)	pf2(1)	pf3(1)	pf4(1)	pf5(1)	pf6(1)

2	$wslr(2)$	pf1(2)	pf2(2)	pf3(2)	pf4(2)	pf5(2)	pf6(2)
...							
i	$wslr(i)$	pf1(i)	pf2(i)	pf3(i)	pf4(i)	pf5(i)	pf6(i)
...							
nwl	$wslr(nwl)$	pf1(nwl)	pf2(nwl)	pf3(nwl)	pf4(nwl)	pf5(nwl)	pf6(nwl)

Record (h1), Motion Displacement Amplitudes of Ship-a

Non-dimensional transfer function: motion displacement amplitude of ship-a:
Heading = $wangle(i)$

no.	$Lambda/Lb$	\bar{x}_1	\bar{x}_2	\bar{x}_3	\bar{x}_4	\bar{x}_5	\bar{x}_6
1	$wslr(1)$	$\bar{x}_1(1)$	$\bar{x}_2(1)$	$\bar{x}_3(1)$	$\bar{x}_4(1)$	$\bar{x}_5(1)$	$\bar{x}_6(1)$
2	$wslr(2)$	$\bar{x}_1(2)$	$\bar{x}_2(2)$	$\bar{x}_3(2)$	$\bar{x}_4(2)$	$\bar{x}_5(2)$	$\bar{x}_6(2)$
...							
i	$wslr(i)$	$\bar{x}_1(i)$	$\bar{x}_2(i)$	$\bar{x}_3(i)$	$\bar{x}_4(i)$	$\bar{x}_5(i)$	$\bar{x}_6(i)$
...							
nwl	$wslr(nwl)$	$\bar{x}_1(nwl)$	$\bar{x}_2(nwl)$	$\bar{x}_3(nwl)$	$\bar{x}_4(nwl)$	$\bar{x}_5(nwl)$	$\bar{x}_6(nwl)$

Record (h2), Phase Angles of Motion Displacement Amplitudes of Ship-a

no.	$Lambda/Lb$	pm1	pm2	pm3	pm4	pm5	pm6
1	$wslr(1)$	pm1(1)	pm2(1)	pm3(1)	pm4(1)	pm5(1)	pm6(1)
2	$wslr(2)$	pm1(2)	pm2(2)	pm3(2)	pm4(2)	pm5(2)	pm6(2)
...							
i	$wslr(i)$	pm1(i)	pm2(i)	pm3(i)	pm4(i)	pm5(i)	pm6(i)
...							
nwl	$wslr(nwl)$	pm1(nwl)	pm2(nwl)	pm3(nwl)	pm4(nwl)	pm5(nwl)	pm6(nwl)

Record (i1), Motion Displacement Amplitudes of Ship-b

Non-dimensional transfer function: motion displacement amplitude of ship-b:
Heading = $wangle(i)$

no.	$Lambda/Lb$	\bar{x}_1	\bar{x}_2	\bar{x}_3	\bar{x}_4	\bar{x}_5	\bar{x}_6
1	$wslr(1)$	$\bar{x}_1(1)$	$\bar{x}_2(1)$	$\bar{x}_3(1)$	$\bar{x}_4(1)$	$\bar{x}_5(1)$	$\bar{x}_6(1)$
2	$wslr(2)$	$\bar{x}_1(2)$	$\bar{x}_2(2)$	$\bar{x}_3(2)$	$\bar{x}_4(2)$	$\bar{x}_5(2)$	$\bar{x}_6(2)$
...							
i	$wslr(i)$	$\bar{x}_1(i)$	$\bar{x}_2(i)$	$\bar{x}_3(i)$	$\bar{x}_4(i)$	$\bar{x}_5(i)$	$\bar{x}_6(i)$
...							
nwl	$wslr(nwl)$	$\bar{x}_1(nwl)$	$\bar{x}_2(nwl)$	$\bar{x}_3(nwl)$	$\bar{x}_4(nwl)$	$\bar{x}_5(nwl)$	$\bar{x}_6(nwl)$

Record (i2), Phase Angles of Motion Displacement Amplitudes of Ship-b

no.	$Lambda/Lb$	pm1	pm2	pm3	pm4	pm5	pm6
1	$wslr(1)$	pm1(1)	pm2(1)	pm3(1)	pm4(1)	pm5(1)	pm6(1)
2	$wslr(2)$	pm1(2)	pm2(2)	pm3(2)	pm4(2)	pm5(2)	pm6(2)
...							
i	$wslr(i)$	pm1(i)	pm2(i)	pm3(i)	pm4(i)	pm5(i)	pm6(i)
...							
nwl	$wslr(nwl)$	pm1(nwl)	pm2(nwl)	pm3(nwl)	pm4(nwl)	pm5(nwl)	pm6(nwl)

Record (j), Spectral Analysis of Ship-a

Spectral analysis for ship-a (Heading = $wangle(i)$) :
 RMS displacements and accelerations, $T1=8.123sec$

motion mode	RMS displacement	RMS acceleration
1	D_1	A_1
2	D_2	A_2
3	D_3	A_3
4	D_4	A_4
5	D_5	A_5
6	D_6	A_6

Record (k), Spectral Analysis of Ship-b

Spectral analysis for ship-b (Heading = $wangle(i)$) :
 RMS displacements and accelerations, $T1=8.123sec$

motion mode	RMS displacement	RMS acceleration
1	D_1	A_1
2	D_2	A_2
3	D_3	A_3
4	D_4	A_4
5	D_5	A_5
6	D_6	A_6

D_j : RMS displacements in j^{th} mode of motion
 the unit is m for $j = 1, 2, 3,$ and

A_j : the unit is *degree* for $j = 4, 5, 6$.
 RMS acceleration in j^{th} mode of motion
 the unit is g ($g = 9.81m/sec^2$) for $j = 1, 2, 3$, and
 the unit is *degree/second²* for $j = 4, 5, 6$.

References

- [1] Hsiung, C.C. and He, Y.J., "Final Report on Frequency-Domain Analysis of Interaction Effects Between Two Ships in Waves Using the 3-D Panel Method", DREA Contract Report, Technical Report CMVDR-96-3, 20 June, 1996.
- [2] Hsiung, C.C., He, Y.J. and Lu, X.G., "User's Guide for PANELGEN - a Program for Generating Hull Panels", DREA Contractor Report 96/419, 1996.
- [3] Hsiung, C.C. and Huang, Z.J., "Final Report - The Frequency-Domain Prediction of Added Resistance of Ships in Waves Using a Near-Field, 3-Dimensional Flow Method", DREA Contractor Report 95/484, 1995.
- [4] Hsiung, C.C. and Huang, Z.J., "User's Guide for SMCA4, a Computer Program for Ship Motion, Sea Loads and Added Wave Resistance Prediction", DREA Contractor Report 95/485, 1995.
- [5] Schmitke, R.T., "Ship Sway, Roll, and Yaw Motions in Oblique Seas", SNAME Transactions, Vol. 86, pp. 24-46, 1978.

Appendix A. Input File Examples

- `shipint.in`
- `panel_a.in`
- `panel_b.in`
- `vdamp_a.in`
- `vdamp_b.in`
- `spectrum.in`

Jul 27 1996 13:23

shipint.in

Page 1

```
'July 20, 1996'  
'AOR' 'panel_a.in'  
162.46 23.16 9.144 20833.82 0.6  
0.0 0.0 -0.8  
9.032 40.615 40.615  
'MCDV' 'panel_b.in'  
52. 10.76 3.4 1065.89 0.5603  
-0.86 0.0 1.01  
3.67 14.56 14.56  
25.44 0.0  
5.144  
7  
45.  
90.  
135.  
180.  
225.  
270.  
315.  
15  
0.2  
0.6  
1.0  
1.4  
1.8  
2.2  
2.6  
3.0  
3.4  
3.8  
4.2  
4.6  
5.0  
5.4  
5.8  
1 1
```

Jul 27 1996 13:17

panel_a.in

Page 1

```
252 200
1 81.250000 0.000000 0.000000
2 73.125000 -1.951219 0.000000
3 65.000000 -3.812500 0.000000
4 56.875000 -5.618902 0.000000
5 48.750000 -7.263720 0.000000
6 40.625000 -8.658536 0.000000
7 32.500000 -9.725610 0.000000
8 24.375000 -10.487805 0.000000
9 16.250000 -11.036586 0.000000
10 8.125000 -11.365854 0.000000
11 0.000000 -11.539634 0.000000
12 -8.125000 -11.585366 0.000000
13 -16.250000 -11.579268 0.000000
14 -24.375000 -11.496951 0.000000
15 -32.500000 -11.228659 0.000000
16 -40.625000 -10.649390 0.000000
17 -48.750000 -9.716464 0.000000
18 -56.875000 -8.353658 0.000000
19 -65.000000 -6.463415 0.000000
20 -70.687500 -5.182927 0.000000
21 -81.463425 0.000000 0.000000
22 80.640244 0.000000 -1.829268
23 73.125000 -1.692073 -2.286585
24 65.000000 -3.509909 -2.286585
25 56.875000 -5.254573 -2.286585
26 48.750000 -6.932165 -2.286585
27 40.625000 -8.403202 -2.286585
28 32.500000 -9.527439 -2.286585
29 24.375000 -10.408537 -2.286585
30 16.250000 -10.987042 -2.286585
31 8.125000 -11.337652 -2.286585
32 0.000000 -11.539634 -2.286585
33 -8.125000 -11.585366 -2.286585
34 -16.250000 -11.579268 -2.286585
35 -24.375000 -11.487043 -2.286585
36 -32.500000 -11.083841 -2.286585
37 -40.625000 -10.228659 -2.286585
38 -48.750000 -8.893292 -2.286585
39 -56.875000 -6.898628 -2.286585
40 -65.000000 -3.866259 -2.256098
41 -70.687500 -1.982062 -1.676829
42 -74.825943 0.000000 -1.335366
43 80.182930 0.000000 -3.658536
44 73.125000 -1.588415 -4.573171
45 65.000000 -3.353659 -4.573171
46 56.875000 -5.097561 -4.573171
47 48.750000 -6.783537 -4.573171
48 40.625000 -8.237805 -4.573171
49 32.500000 -9.426829 -4.573171
50 24.375000 -10.338414 -4.573171
51 16.250000 -10.957317 -4.573171
52 8.125000 -11.310975 -4.573171
53 0.000000 -11.539634 -4.573171
54 -8.125000 -11.585366 -4.573171
55 -16.250000 -11.579268 -4.573171
56 -24.375000 -11.448170 -4.573171
57 -32.500000 -10.862805 -4.573171
58 -40.625000 -9.704268 -4.573171
59 -48.750000 -8.067073 -4.573171
60 -56.875000 -5.868902 -4.573171
61 -65.000000 -3.154370 -4.512195
62 -70.687500 -0.011687 -3.353659
63 -71.366791 0.000000 -2.670732
64 79.573174 0.000000 -5.487805
65 73.125000 -1.326220 -6.859756
```

Jul 27 1996 13:17

panel_a.in

Page 2

```
66 65.000000 -2.946647 -6.859756
67 56.875000 -4.634147 -6.859756
68 48.750000 -6.307927 -6.859756
69 40.625000 -7.823171 -6.859756
70 32.500000 -9.072409 -6.859756
71 24.375000 -10.029726 -6.859756
72 16.250000 -10.705030 -6.859756
73 8.125000 -11.214939 -6.859756
74 0.000000 -11.449696 -6.859756
75 -8.125000 -11.525915 -6.859756
76 -16.250000 -11.434452 -6.859756
77 -24.375000 -10.954268 -6.859756
78 -32.500000 -10.135672 -6.859756
79 -40.625000 -8.923780 -6.859756
80 -48.750000 -7.385671 -6.859756
81 -56.875000 -5.402439 -6.859756
82 -65.000000 -2.957927 -6.768292
83 -70.687500 -1.371951 -5.030488
84 -71.087845 0.000000 -4.006098
85 78.963417 0.000000 -7.317073
86 73.125000 -0.814025 -8.574695
87 65.000000 -2.105945 -8.574695
88 56.875000 -3.433689 -8.574695
89 48.750000 -4.828506 -8.574695
90 40.625000 -6.266768 -8.574695
91 32.500000 -7.616616 -8.574695
92 24.375000 -8.712652 -8.574695
93 16.250000 -9.504573 -8.574695
94 8.125000 -10.050304 -8.574695
95 0.000000 -10.352897 -8.574695
96 -8.125000 -10.394054 -8.574695
97 -16.250000 -10.126524 -8.574695
98 -24.375000 -9.536586 -8.574695
99 -32.500000 -8.631098 -8.574695
100 -40.625000 -7.398628 -8.574695
101 -48.750000 -5.881097 -8.574695
102 -56.875000 -3.852897 -8.574695
103 -65.000000 -1.481707 -8.460366
104 -70.687500 -0.691693 -6.288110
105 -73.112885 0.000000 -5.341464
106 75.914635 0.000000 -9.146341
107 73.125000 0.000000 -9.146341
108 65.000000 0.000000 -9.146341
109 56.875000 0.000000 -9.146341
110 48.750000 0.000000 -9.146341
111 40.625000 0.000000 -9.146341
112 32.500000 0.000000 -9.146341
113 24.375000 0.000000 -9.146341
114 16.250000 0.000000 -9.146341
115 8.125000 0.000000 -9.146341
116 0.000000 0.000000 -9.146341
117 -8.125000 0.000000 -9.146341
118 -16.250000 0.000000 -9.146341
119 -24.375000 0.000000 -9.146341
120 -32.500000 0.000000 -9.146341
121 -40.625000 0.000000 -9.146341
122 -48.750000 0.000000 -9.146341
123 -56.875000 0.000000 -9.146341
124 -65.000000 0.000000 -9.024390
125 -70.687500 0.000000 -6.707317
126 -70.579269 0.000000 -6.676829
127 81.250000 0.000000 0.000000
128 73.125000 1.951219 0.000000
129 65.000000 3.812500 0.000000
130 56.875000 5.618902 0.000000
131 48.750000 7.263720 0.000000
```


Jul 27 1996 13:17

panel_a.in

Page 3

132	40.625000	8.658536	0.000000
133	32.500000	9.725610	0.000000
134	24.375000	10.487805	0.000000
135	16.250000	11.036586	0.000000
136	8.125000	11.365854	0.000000
137	0.000000	11.539634	0.000000
138	-8.125000	11.585366	0.000000
139	-16.250000	11.579268	0.000000
140	-24.375000	11.496951	0.000000
141	-32.500000	11.228659	0.000000
142	-40.625000	10.649390	0.000000
143	-48.750000	9.716464	0.000000
144	-56.875000	8.353658	0.000000
145	-65.000000	6.463415	0.000000
146	-70.687500	5.182927	0.000000
147	-81.463425	0.000000	0.000000
148	80.640244	0.000000	-1.829268
149	73.125000	1.692073	-2.286585
150	65.000000	3.509909	-2.286585
151	56.875000	5.254573	-2.286585
152	48.750000	6.932165	-2.286585
153	40.625000	8.403202	-2.286585
154	32.500000	9.527439	-2.286585
155	24.375000	10.408537	-2.286585
156	16.250000	10.987042	-2.286585
157	8.125000	11.337652	-2.286585
158	0.000000	11.539634	-2.286585
159	-8.125000	11.585366	-2.286585
160	-16.250000	11.579268	-2.286585
161	-24.375000	11.487043	-2.286585
162	-32.500000	11.083841	-2.286585
163	-40.625000	10.228659	-2.286585
164	-48.750000	8.893292	-2.286585
165	-56.875000	6.898628	-2.286585
166	-65.000000	3.866259	-2.256098
167	-70.687500	1.982062	-1.676829
168	-74.825943	0.000000	-1.335366
169	80.182930	0.000000	-3.658536
170	73.125000	1.588415	-4.573171
171	65.000000	3.353659	-4.573171
172	56.875000	5.097561	-4.573171
173	48.750000	6.783537	-4.573171
174	40.625000	8.237805	-4.573171
175	32.500000	9.426829	-4.573171
176	24.375000	10.338414	-4.573171
177	16.250000	10.957317	-4.573171
178	8.125000	11.310975	-4.573171
179	0.000000	11.539634	-4.573171
180	-8.125000	11.585366	-4.573171
181	-16.250000	11.579268	-4.573171
182	-24.375000	11.448170	-4.573171
183	-32.500000	10.862805	-4.573171
184	-40.625000	9.704268	-4.573171
185	-48.750000	8.067073	-4.573171
186	-56.875000	5.868902	-4.573171
187	-65.000000	3.154370	-4.512195
188	-70.687500	0.011687	-3.353659
189	-71.366791	0.000000	-2.670732
190	79.573174	0.000000	-5.487805
191	73.125000	1.326220	-6.859756
192	65.000000	2.946647	-6.859756
193	56.875000	4.634147	-6.859756
194	48.750000	6.307927	-6.859756
195	40.625000	7.823171	-6.859756
196	32.500000	9.072409	-6.859756
197	24.375000	10.029726	-6.859756

Jul 27 1996 13:17

panel_a.in

Page 4

```

198 16.250000 10.705030 -6.859756
199 8.125000 11.214939 -6.859756
200 0.000000 11.449696 -6.859756
201 -8.125000 11.525915 -6.859756
202 -16.250000 11.434452 -6.859756
203 -24.375000 10.954268 -6.859756
204 -32.500000 10.135672 -6.859756
205 -40.625000 8.923780 -6.859756
206 -48.750000 7.385671 -6.859756
207 -56.875000 5.402439 -6.859756
208 -65.000000 2.957927 -6.768292
209 -70.687500 1.371951 -5.030488
210 -71.087845 0.000000 -4.006098
211 78.963417 0.000000 -7.317073
212 73.125000 0.814025 -8.574695
213 65.000000 2.105945 -8.574695
214 56.875000 3.433689 -8.574695
215 48.750000 4.828506 -8.574695
216 40.625000 6.266768 -8.574695
217 32.500000 7.616616 -8.574695
218 24.375000 8.712652 -8.574695
219 16.250000 9.504573 -8.574695
220 8.125000 10.050304 -8.574695
221 0.000000 10.352897 -8.574695
222 -8.125000 10.394054 -8.574695
223 -16.250000 10.126524 -8.574695
224 -24.375000 9.536586 -8.574695
225 -32.500000 8.631098 -8.574695
226 -40.625000 7.398628 -8.574695
227 -48.750000 5.881097 -8.574695
228 -56.875000 3.852897 -8.574695
229 -65.000000 1.481707 -8.460366
230 -70.687500 0.691693 -6.288110
231 -73.112885 0.000000 -5.341464
232 75.914635 0.000000 -9.146341
233 73.125000 0.000000 -9.146341
234 65.000000 0.000000 -9.146341
235 56.875000 0.000000 -9.146341
236 48.750000 0.000000 -9.146341
237 40.625000 0.000000 -9.146341
238 32.500000 0.000000 -9.146341
239 24.375000 0.000000 -9.146341
240 16.250000 0.000000 -9.146341
241 8.125000 0.000000 -9.146341
242 0.000000 0.000000 -9.146341
243 -8.125000 0.000000 -9.146341
244 -16.250000 0.000000 -9.146341
245 -24.375000 0.000000 -9.146341
246 -32.500000 0.000000 -9.146341
247 -40.625000 0.000000 -9.146341
248 -48.750000 0.000000 -9.146341
249 -56.875000 0.000000 -9.146341
250 -65.000000 0.000000 -9.024390
251 -70.687500 0.000000 -6.707317
252 -70.579269 0.000000 -6.676829
1 1 22 23 2
2 2 23 24 3
3 3 24 25 4
4 4 25 26 5
5 5 26 27 6
6 6 27 28 7
7 7 28 29 8
8 8 29 30 9
9 9 30 31 10
10 10 31 32 11
11 11 32 33 12

```

Jul 27 1996 13:17

panel_a.in

Page 5

12 12 33 34 13
13 13 34 35 14
14 14 35 36 15
15 15 36 37 16
16 16 37 38 17
17 17 38 39 18
18 18 39 40 19
19 19 40 41 20
20 20 41 42 21
21 22 43 44 23
22 23 44 45 24
23 24 45 46 25
24 25 46 47 26
25 26 47 48 27
26 27 48 49 28
27 28 49 50 29
28 29 50 51 30
29 30 51 52 31
30 31 52 53 32
31 32 53 54 33
32 33 54 55 34
33 34 55 56 35
34 35 56 57 36
35 36 57 58 37
36 37 58 59 38
37 38 59 60 39
38 39 60 61 40
39 40 61 62 41
40 41 62 63 42
41 43 64 65 44
42 44 65 66 45
43 45 66 67 46
44 46 67 68 47
45 47 68 69 48
46 48 69 70 49
47 49 70 71 50
48 50 71 72 51
49 51 72 73 52
50 52 73 74 53
51 53 74 75 54
52 54 75 76 55
53 55 76 77 56
54 56 77 78 57
55 57 78 79 58
56 58 79 80 59
57 59 80 81 60
58 60 81 82 61
59 61 82 83 62
60 62 83 84 63
61 64 85 86 65
62 65 86 87 66
63 66 87 88 67
64 67 88 89 68
65 68 89 90 69
66 69 90 91 70
67 70 91 92 71
68 71 92 93 72
69 72 93 94 73
70 73 94 95 74
71 74 95 96 75
72 75 96 97 76
73 76 97 98 77
74 77 98 99 78
75 78 99 100 79
76 79 100 101 80
77 80 101 102 81

Jul 27 1996 13:17

panel_a.in

Page 6

78 81 102 103 82
79 82 103 104 83
80 83 104 105 84
81 85 106 107 86
82 86 107 108 87
83 87 108 109 88
84 88 109 110 89
85 89 110 111 90
86 90 111 112 91
87 91 112 113 92
88 92 113 114 93
89 93 114 115 94
90 94 115 116 95
91 95 116 117 96
92 96 117 118 97
93 97 118 119 98
94 98 119 120 99
95 99 120 121 100
96 100 121 122 101
97 101 122 123 102
98 102 123 124 103
99 103 124 125 104
100 104 125 126 105
101 127 128 149 148
102 128 129 150 149
103 129 130 151 150
104 130 131 152 151
105 131 132 153 152
106 132 133 154 153
107 133 134 155 154
108 134 135 156 155
109 135 136 157 156
110 136 137 158 157
111 137 138 159 158
112 138 139 160 159
113 139 140 161 160
114 140 141 162 161
115 141 142 163 162
116 142 143 164 163
117 143 144 165 164
118 144 145 166 165
119 145 146 167 166
120 146 147 168 167
121 148 149 170 169
122 149 150 171 170
123 150 151 172 171
124 151 152 173 172
125 152 153 174 173
126 153 154 175 174
127 154 155 176 175
128 155 156 177 176
129 156 157 178 177
130 157 158 179 178
131 158 159 180 179
132 159 160 181 180
133 160 161 182 181
134 161 162 183 182
135 162 163 184 183
136 163 164 185 184
137 164 165 186 185
138 165 166 187 186
139 166 167 188 187
140 167 168 189 188
141 169 170 191 190
142 170 171 192 191
143 171 172 193 192

Jul 27 1996 13:17

panel_a.in

Page 7

144 172 173 194 193
145 173 174 195 194
146 174 175 196 195
147 175 176 197 196
148 176 177 198 197
149 177 178 199 198
150 178 179 200 199
151 179 180 201 200
152 180 181 202 201
153 181 182 203 202
154 182 183 204 203
155 183 184 205 204
156 184 185 206 205
157 185 186 207 206
158 186 187 208 207
159 187 188 209 208
160 188 189 210 209
161 190 191 212 211
162 191 192 213 212
163 192 193 214 213
164 193 194 215 214
165 194 195 216 215
166 195 196 217 216
167 196 197 218 217
168 197 198 219 218
169 198 199 220 219
170 199 200 221 220
171 200 201 222 221
172 201 202 223 222
173 202 203 224 223
174 203 204 225 224
175 204 205 226 225
176 205 206 227 226
177 206 207 228 227
178 207 208 229 228
179 208 209 230 229
180 209 210 231 230
181 211 212 233 232
182 212 213 234 233
183 213 214 235 234
184 214 215 236 235
185 215 216 237 236
186 216 217 238 237
187 217 218 239 238
188 218 219 240 239
189 219 220 241 240
190 220 221 242 241
191 221 222 243 242
192 222 223 244 243
193 223 224 245 244
194 224 225 246 245
195 225 226 247 246
196 226 227 248 247
197 227 228 249 248
198 228 229 250 249
199 229 230 251 250
200 230 231 252 251

Jul 27 1996 13:26

panel_b.in

Page 1

```
312 212
1 24.200001 0.000000 -3.400000
2 23.400000 0.000000 -3.400000
3 20.799999 0.000000 -3.400000
4 18.200001 0.000000 -3.400000
5 15.600000 0.000000 -3.400000
6 13.000000 0.000000 -3.400000
7 10.400000 0.000000 -3.400000
8 7.800000 0.000000 -3.400000
9 5.200000 0.000000 -3.400000
10 2.600000 0.000000 -3.400000
11 0.000000 0.000000 -3.400000
12 -2.600000 0.000000 -3.400000
13 -5.200000 0.000000 -3.400000
14 24.400000 0.000000 -2.900000
15 23.400000 -0.200000 -2.900000
16 20.799999 -0.550000 -2.900000
17 18.200001 -0.900000 -2.900000
18 15.600000 -1.250000 -2.900000
19 13.000000 -1.450000 -2.960000
20 10.400000 -1.640000 -3.050000
21 7.800000 -1.760000 -3.100000
22 5.200000 -1.900000 -3.160000
23 2.600000 -1.960000 -3.190000
24 0.000000 -2.050000 -3.230000
25 -2.600000 -2.050000 -3.230000
26 -5.200000 -2.050000 -3.230000
27 24.799999 0.000000 -2.400000
28 23.400000 -0.310000 -2.400000
29 20.799999 -0.810000 -2.400000
30 18.200001 -1.350000 -2.400000
31 15.600000 -1.750000 -2.560000
32 13.000000 -2.020000 -2.690000
33 10.400000 -2.340000 -2.830000
34 7.800000 -2.560000 -2.930000
35 5.200000 -2.750000 -3.000000
36 2.600000 -2.850000 -3.050000
37 0.000000 -2.950000 -3.100000
38 -2.600000 -2.950000 -3.100000
39 -5.200000 -3.000000 -3.050000
40 25.200001 0.000000 -1.720000
41 23.400000 -0.460000 -1.720000
42 20.799999 -1.160000 -1.720000
43 18.200001 -1.940000 -1.720000
44 15.600000 -2.530000 -2.020000
45 13.000000 -3.000000 -2.250000
46 10.400000 -3.470000 -2.470000
47 7.800000 -3.840000 -2.650000
48 5.200000 -4.130000 -2.760000
49 2.600000 -4.330000 -2.850000
50 0.000000 -4.450000 -2.920000
51 -2.600000 -4.460000 -2.920000
52 -5.200000 -4.640000 -2.840000
53 25.700001 0.000000 -0.950000
54 23.400000 -0.750000 -0.950000
55 20.799999 -1.590000 -0.950000
56 18.200001 -2.450000 -0.950000
57 15.600000 -3.060000 -1.200000
58 13.000000 -3.500000 -1.450000
59 10.400000 -4.000000 -1.670000
60 7.800000 -4.370000 -1.850000
61 5.200000 -4.650000 -2.000000
62 2.600000 -4.900000 -2.120000
63 0.000000 -5.150000 -2.210000
64 -2.600000 -5.200000 -2.250000
65 -5.200000 -5.260000 -2.190000
```

Jul 27 1996 13:26

panel_b.in

Page 2

```
66 26.000000 0.000000 0.000000
67 23.400000 -1.250000 0.000000
68 20.799999 -2.120000 0.000000
69 18.200001 -2.940000 0.000000
70 15.600000 -3.570000 0.000000
71 13.000000 -4.000000 0.000000
72 10.400000 -4.490000 0.000000
73 7.800000 -4.810000 0.000000
74 5.200000 -5.030000 0.000000
75 2.600000 -5.160000 0.000000
76 0.000000 -5.320000 0.000000
77 -2.600000 -5.360000 0.000000
78 -5.200000 -5.400000 0.000000
79 -5.200000 -0.500000 -3.400000
80 -7.800000 -0.500000 -3.200000
81 -10.400000 -0.500000 -2.970000
82 -13.000000 -0.500000 -2.600000
83 -15.600000 -0.500000 -2.150000
84 -18.200001 -0.500000 -1.650000
85 -20.799999 -0.440000 -1.250000
86 -23.400000 0.000000 -1.100000
87 -26.000000 0.000000 -0.800000
88 -5.200000 -2.000000 -3.200000
89 -7.800000 -2.000000 -2.950000
90 -10.400000 -2.000000 -2.750000
91 -13.000000 -2.000000 -2.380000
92 -15.600000 -2.000000 -1.950000
93 -18.200001 -1.500000 -1.520000
94 -20.799999 -1.000000 -1.150000
95 -23.400000 -1.000000 -0.950000
96 -26.000000 -0.650000 -0.750000
97 -5.200000 -3.500000 -3.000000
98 -7.800000 -3.500000 -2.750000
99 -10.400000 -3.500000 -2.560000
100 -13.000000 -3.500000 -2.180000
101 -15.600000 -3.500000 -1.750000
102 -18.200001 -2.500000 -1.400000
103 -20.799999 -2.000000 -1.000000
104 -23.400000 -2.000000 -0.780000
105 -26.000000 -1.200000 -0.650000
106 -5.200000 -4.640000 -2.840000
107 -7.800000 -4.650000 -2.650000
108 -10.400000 -4.700000 -2.390000
109 -13.000000 -4.700000 -2.000000
110 -15.600000 -4.700000 -1.570000
111 -18.200001 -4.000000 -1.150000
112 -20.799999 -3.000000 -0.870000
113 -23.400000 -3.000000 -0.640000
114 -26.000000 -1.800000 -0.550000
115 -5.200000 -5.260000 -2.190000
116 -7.800000 -5.250000 -2.030000
117 -10.400000 -5.270000 -1.670000
118 -13.000000 -5.230000 -1.400000
119 -15.600000 -5.170000 -1.050000
120 -18.200001 -4.800000 -0.920000
121 -20.799999 -4.000000 -0.730000
122 -23.400000 -3.700000 -0.520000
123 -26.000000 -2.400000 -0.500000
124 -5.200000 -5.400000 0.000000
125 -7.800000 -5.390000 0.000000
126 -10.400000 -5.380000 0.000000
127 -13.000000 -5.320000 0.000000
128 -15.600000 -5.260000 0.000000
129 -18.200001 -5.180000 0.000000
130 -20.799999 -5.050000 0.000000
131 -23.400000 -4.940000 0.000000
```

Jul 27 1996 13:26

panel_b.in

Page 3

```
132 -26.000000 -4.720000 0.000000
133 -5.200000 0.000000 -3.400000
134 -7.800000 0.000000 -3.400000
135 -10.400000 0.000000 -3.400000
136 -13.000000 0.000000 -3.400000
137 -15.600000 0.000000 -3.400000
138 -18.200001 0.000000 -3.400000
139 -20.799999 0.000000 -3.400000
140 -23.400000 0.000000 -3.400000
141 -5.200000 -0.500000 -3.400000
142 -7.800000 -0.500000 -3.400000
143 -10.400000 -0.500000 -3.400000
144 -13.000000 -0.500000 -3.400000
145 -15.600000 -0.500000 -3.400000
146 -18.200001 -0.500000 -3.400000
147 -20.799999 -0.400000 -3.400000
148 -23.400000 0.000000 -3.400000
149 -5.200000 -0.500000 -3.400000
150 -7.800000 -0.500000 -3.200000
151 -10.400000 -0.500000 -2.970000
152 -13.000000 -0.500000 -2.600000
153 -15.600000 -0.500000 -2.150000
154 -18.200001 -0.500000 -1.720000
155 -20.799999 -0.400000 -1.250000
156 -23.400000 0.000000 -1.100000
157 24.200001 0.000000 -3.400000
158 23.400000 0.000000 -3.400000
159 20.799999 0.000000 -3.400000
160 18.200001 0.000000 -3.400000
161 15.600000 0.000000 -3.400000
162 13.000000 0.000000 -3.400000
163 10.400000 0.000000 -3.400000
164 7.800000 0.000000 -3.400000
165 5.200000 0.000000 -3.400000
166 2.600000 0.000000 -3.400000
167 0.000000 0.000000 -3.400000
168 -2.600000 0.000000 -3.400000
169 -5.200000 0.000000 -3.400000
170 24.400000 0.000000 -2.900000
171 23.400000 0.200000 -2.900000
172 20.799999 0.550000 -2.900000
173 18.200001 0.900000 -2.900000
174 15.600000 1.250000 -2.900000
175 13.000000 1.450000 -2.960000
176 10.400000 1.640000 -3.050000
177 7.800000 1.760000 -3.100000
178 5.200000 1.900000 -3.160000
179 2.600000 1.960000 -3.190000
180 0.000000 2.050000 -3.230000
181 -2.600000 2.050000 -3.230000
182 -5.200000 2.050000 -3.230000
183 24.799999 0.000000 -2.400000
184 23.400000 0.310000 -2.400000
185 20.799999 0.810000 -2.400000
186 18.200001 1.350000 -2.400000
187 15.600000 1.750000 -2.560000
188 13.000000 2.020000 -2.690000
189 10.400000 2.340000 -2.830000
190 7.800000 2.560000 -2.930000
191 5.200000 2.750000 -3.000000
192 2.600000 2.850000 -3.050000
193 0.000000 2.950000 -3.100000
194 -2.600000 2.950000 -3.100000
195 -5.200000 3.000000 -3.050000
196 25.200001 0.000000 -1.720000
197 23.400000 0.460000 -1.720000
```


Jul 27 1996 13:26

panel_b.in

Page 4

198	20.799999	1.160000	-1.720000
199	18.200001	1.940000	-1.720000
200	15.600000	2.530000	-2.020000
201	13.000000	3.000000	-2.250000
202	10.400000	3.470000	-2.470000
203	7.800000	3.840000	-2.650000
204	5.200000	4.130000	-2.760000
205	2.600000	4.330000	-2.850000
206	0.000000	4.450000	-2.920000
207	-2.600000	4.460000	-2.920000
208	-5.200000	4.640000	-2.840000
209	25.700001	0.000000	-0.950000
210	23.400000	0.750000	-0.950000
211	20.799999	1.590000	-0.950000
212	18.200001	2.450000	-0.950000
213	15.600000	3.060000	-1.200000
214	13.000000	3.500000	-1.450000
215	10.400000	4.000000	-1.670000
216	7.800000	4.370000	-1.850000
217	5.200000	4.650000	-2.000000
218	2.600000	4.900000	-2.120000
219	0.000000	5.150000	-2.210000
220	-2.600000	5.200000	-2.250000
221	-5.200000	5.260000	-2.190000
222	26.000000	0.000000	0.000000
223	23.400000	1.250000	0.000000
224	20.799999	2.120000	0.000000
225	18.200001	2.940000	0.000000
226	15.600000	3.570000	0.000000
227	13.000000	4.000000	0.000000
228	10.400000	4.490000	0.000000
229	7.800000	4.810000	0.000000
230	5.200000	5.030000	0.000000
231	2.600000	5.160000	0.000000
232	0.000000	5.320000	0.000000
233	-2.600000	5.360000	0.000000
234	-5.200000	5.400000	0.000000
235	-5.200000	0.500000	-3.400000
236	-7.800000	0.500000	-3.200000
237	-10.400000	0.500000	-2.970000
238	-13.000000	0.500000	-2.600000
239	-15.600000	0.500000	-2.150000
240	-18.200001	0.500000	-1.650000
241	-20.799999	0.440000	-1.250000
242	-23.400000	0.000000	-1.100000
243	-26.000000	0.000000	-0.800000
244	-5.200000	2.000000	-3.200000
245	-7.800000	2.000000	-2.950000
246	-10.400000	2.000000	-2.750000
247	-13.000000	2.000000	-2.380000
248	-15.600000	2.000000	-1.950000
249	-18.200001	1.500000	-1.520000
250	-20.799999	1.000000	-1.150000
251	-23.400000	1.000000	-0.950000
252	-26.000000	0.650000	-0.750000
253	-5.200000	3.500000	-3.000000
254	-7.800000	3.500000	-2.750000
255	-10.400000	3.500000	-2.560000
256	-13.000000	3.500000	-2.180000
257	-15.600000	3.500000	-1.750000
258	-18.200001	2.500000	-1.400000
259	-20.799999	2.000000	-1.000000
260	-23.400000	2.000000	-0.780000
261	-26.000000	1.200000	-0.650000
262	-5.200000	4.640000	-2.840000
263	-7.800000	4.650000	-2.650000

Jul 27 1996 13:26

panel_b.in

Page 5

```
264 -10.400000 4.700000 -2.390000
265 -13.000000 4.700000 -2.000000
266 -15.600000 4.700000 -1.570000
267 -18.200001 4.000000 -1.150000
268 -20.799999 3.000000 -0.870000
269 -23.400000 3.000000 -0.640000
270 -26.000000 1.800000 -0.550000
271 -5.200000 5.260000 -2.190000
272 -7.800000 5.250000 -2.030000
273 -10.400000 5.270000 -1.670000
274 -13.000000 5.230000 -1.400000
275 -15.600000 5.170000 -1.050000
276 -18.200001 4.800000 -0.920000
277 -20.799999 4.000000 -0.730000
278 -23.400000 3.700000 -0.520000
279 -26.000000 2.400000 -0.500000
280 -5.200000 5.400000 0.000000
281 -7.800000 5.390000 0.000000
282 -10.400000 5.380000 0.000000
283 -13.000000 5.320000 0.000000
284 -15.600000 5.260000 0.000000
285 -18.200001 5.180000 0.000000
286 -20.799999 5.050000 0.000000
287 -23.400000 4.940000 0.000000
288 -26.000000 4.720000 0.000000
289 -5.200000 0.000000 -3.400000
290 -7.800000 0.000000 -3.400000
291 -10.400000 0.000000 -3.400000
292 -13.000000 0.000000 -3.400000
293 -15.600000 0.000000 -3.400000
294 -18.200001 0.000000 -3.400000
295 -20.799999 0.000000 -3.400000
296 -23.400000 0.000000 -3.400000
297 -5.200000 0.500000 -3.400000
298 -7.800000 0.500000 -3.400000
299 -10.400000 0.500000 -3.400000
300 -13.000000 0.500000 -3.400000
301 -15.600000 0.500000 -3.400000
302 -18.200001 0.500000 -3.400000
303 -20.799999 0.400000 -3.400000
304 -23.400000 0.000000 -3.400000
305 -5.200000 0.500000 -3.400000
306 -7.800000 0.500000 -3.200000
307 -10.400000 0.500000 -2.970000
308 -13.000000 0.500000 -2.600000
309 -15.600000 0.500000 -2.150000
310 -18.200001 0.500000 -1.720000
311 -20.799999 0.400000 -1.250000
312 -23.400000 0.000000 -1.100000
1 1 2 15 14
2 2 3 16 15
3 3 4 17 16
4 4 5 18 17
5 5 6 19 18
6 6 7 20 19
7 7 8 21 20
8 8 9 22 21
9 9 10 23 22
10 10 11 24 23
11 11 12 25 24
12 12 13 26 25
13 14 15 28 27
14 15 16 29 28
15 16 17 30 29
16 17 18 31 30
17 18 19 32 31
```

Jul 27 1996 13:26

panel_b.in

Page 6

18 19 20 33 32
19 20 21 34 33
20 21 22 35 34
21 22 23 36 35
22 23 24 37 36
23 24 25 38 37
24 25 26 39 38
25 27 28 41 40
26 28 29 42 41
27 29 30 43 42
28 30 31 44 43
29 31 32 45 44
30 32 33 46 45
31 33 34 47 46
32 34 35 48 47
33 35 36 49 48
34 36 37 50 49
35 37 38 51 50
36 38 39 52 51
37 40 41 54 53
38 41 42 55 54
39 42 43 56 55
40 43 44 57 56
41 44 45 58 57
42 45 46 59 58
43 46 47 60 59
44 47 48 61 60
45 48 49 62 61
46 49 50 63 62
47 50 51 64 63
48 51 52 65 64
49 53 54 67 66
50 54 55 68 67
51 55 56 69 68
52 56 57 70 69
53 57 58 71 70
54 58 59 72 71
55 59 60 73 72
56 60 61 74 73
57 61 62 75 74
58 62 63 76 75
59 63 64 77 76
60 64 65 78 77
61 79 80 89 88
62 80 81 90 89
63 81 82 91 90
64 82 83 92 91
65 83 84 93 92
66 84 85 94 93
67 85 86 95 94
68 86 87 96 95
69 88 89 98 97
70 89 90 99 98
71 90 91 100 99
72 91 92 101 100
73 92 93 102 101
74 93 94 103 102
75 94 95 104 103
76 95 96 105 104
77 97 98 107 106
78 98 99 108 107
79 99 100 109 108
80 100 101 110 109
81 101 102 111 110
82 102 103 112 111
83 103 104 113 112

Jul 27 1996 13:26

panel_b.in

Page 7

84 104 105 114 113
85 106 107 116 115
86 107 108 117 116
87 108 109 118 117
88 109 110 119 118
89 110 111 120 119
90 111 112 121 120
91 112 113 122 121
92 113 114 123 122
93 115 116 125 124
94 116 117 126 125
95 117 118 127 126
96 118 119 128 127
97 119 120 129 128
98 120 121 130 129
99 121 122 131 130
100 122 123 132 131
101 142 143 151 150
102 143 144 152 151
103 144 145 153 152
104 145 146 154 153
105 146 147 155 154
106 147 148 156 155
107 157 170 171 158
108 158 171 172 159
109 159 172 173 160
110 160 173 174 161
111 161 174 175 162
112 162 175 176 163
113 163 176 177 164
114 164 177 178 165
115 165 178 179 166
116 166 179 180 167
117 167 180 181 168
118 168 181 182 169
119 170 183 184 171
120 171 184 185 172
121 172 185 186 173
122 173 186 187 174
123 174 187 188 175
124 175 188 189 176
125 176 189 190 177
126 177 190 191 178
127 178 191 192 179
128 179 192 193 180
129 180 193 194 181
130 181 194 195 182
131 183 196 197 184
132 184 197 198 185
133 185 198 199 186
134 186 199 200 187
135 187 200 201 188
136 188 201 202 189
137 189 202 203 190
138 190 203 204 191
139 191 204 205 192
140 192 205 206 193
141 193 206 207 194
142 194 207 208 195
143 196 209 210 197
144 197 210 211 198
145 198 211 212 199
146 199 212 213 200
147 200 213 214 201
148 201 214 215 202
149 202 215 216 203

Jul 27 1996 13:26

panel_b.in

Page 8

150 203 216 217 204
151 204 217 218 205
152 205 218 219 206
153 206 219 220 207
154 207 220 221 208
155 209 222 223 210
156 210 223 224 211
157 211 224 225 212
158 212 225 226 213
159 213 226 227 214
160 214 227 228 215
161 215 228 229 216
162 216 229 230 217
163 217 230 231 218
164 218 231 232 219
165 219 232 233 220
166 220 233 234 221
167 235 244 245 236
168 236 245 246 237
169 237 246 247 238
170 238 247 248 239
171 239 248 249 240
172 240 249 250 241
173 241 250 251 242
174 242 251 252 243
175 244 253 254 245
176 245 254 255 246
177 246 255 256 247
178 247 256 257 248
179 248 257 258 249
180 249 258 259 250
181 250 259 260 251
182 251 260 261 252
183 253 262 263 254
184 254 263 264 255
185 255 264 265 256
186 256 265 266 257
187 257 266 267 258
188 258 267 268 259
189 259 268 269 260
190 260 269 270 261
191 262 271 272 263
192 263 272 273 264
193 264 273 274 265
194 265 274 275 266
195 266 275 276 267
196 267 276 277 268
197 268 277 278 269
198 269 278 279 270
199 271 280 281 272
200 272 281 282 273
201 273 282 283 274
202 274 283 284 275
203 275 284 285 276
204 276 285 286 277
205 277 286 287 278
206 278 287 288 279
207 298 306 307 299
208 299 307 308 300
209 300 308 309 301
210 301 309 310 302
211 302 310 311 303
212 303 311 312 304

Jul 27 1996 13:26

vdamp_a.in

Page 1

	1	1	1	0	1
21	9	14			
999.099976		1.139999999E-06			
0.4	0.0098				
2	73.189	10.4	5.9	6.7	
2	151.752	12.9	8.2	7.2	
2	170.721	16.7	8.344	9.144	
2	194.748	19.5	8.344	9.144	
2	211.188	21.3	8.344	9.144	
2	224.471	22.5	8.344	9.144	
2	237.11	23.1	8.344	9.144	
2	242.17	23.2	8.344	9.144	
2	245.33	23.2	8.344	9.144	
2	245.33	23.2	8.344	9.144	
2	245.33	23.2	8.344	9.144	
2	245.27	22.7	8.344	9.144	
2	232.69	22.	8.344	9.144	
2	225.	21.	8.344	9.144	
2	212.45	19.4	8.344	9.144	
2	196.01	17.3	8.344	9.144	
2	179.57	14.6	8.344	9.144	
2	156.81	11.3	8.344	9.144	
2	139.1	7.6	8.344	9.144	
2	123.93	3.9	8.344	9.144	
2	34.52	1.8	8.344	9.144	
5.9	63.	0.	0.65	4.0615	
8.2	49.	0.	3.05	8.123	
8.344	33.	0.	2.80	8.123	
8.344	19.	0.	2.30	8.123	
8.344	10.	0.	3.7	8.123	
8.344	5.	0.	3.0	8.123	
8.344	0.	0.	2.9	8.123	
8.344	0.	0.	2.6	8.123	
8.344	0.	13.	2.2	8.123	
8.344	0.	13.2	2.2	8.123	
8.344	0.	13.3	2.2	8.123	
8.344	0.	13.	2.1	8.123	
8.344	0.	12.4	2.0	8.123	
8.344	3.	11.8	2.4	8.123	
8.344	4.	0.	2.1	8.123	
8.344	5.	0.	3.0	8.123	
8.344	10.	0.	3.1	8.123	
8.344	10.	0.	3.0	8.123	
8.344	10.	0.	2.8	8.123	
8.344	10.	0.	1.0	8.123	
3.5	10.	0.	1.0	4.0615	
0.	0.	1.0	0.		
0.	0.	0.9	0.		
0.	0.	0.5	0.		
0.	0.	0.4	0.		
0.	0.	0.2	0.		
0.	0.	0.2	0.		
0.	0.	0.5	0.		
0.	0.	0.4	0.		
0.645	8.	0.4	0.		
0.645	8.3	0.4	0.		
0.645	8.3	0.4	0.		
0.645	7.9	0.5	0.		
0.645	7.5	0.5	0.		
0.645	7.3	0.5	0.		
0.	0.	0.2	0.		
0.	0.	0.1	0.		
0.	0.	0.5	0.		
0.	0.	0.5	0.		
0.	0.	0.5	0.		
0.	0.	0.	0.		

Jul 27 1996 13:26

vdamp_a.in

Page 2

0.	0.	0.	0.
0.	-0.8	7.315	0. 29.728
0	0.		

Jul 27 1996 13:26

vdamp_b.in

Page 2

0.	0.	0.	0.		
2.25	1.01	2.25	1.434	11.	
0	0.				

Jul 27 1996 13:27

spectrum.in

Page 1

3
3.7 8.123

Appendix B. Output File Examples

- `shipint.out`

Jul 27 1996 13:27

shipint.out

Page 1

 SHIPINT Program Output Results

Date of Computation:
 July 20, 1996

Form of ship_a:
 AOR

panel file : panel_a.in
 Ship_a geometrical principals:
 L= 162.46(m.) B= 23.16(m.) T= 9.14(m.) Vol= 20833.82(m.^3) Cb= .60
 Xg= .00(m.) Yg= .00(m.) Zg= -.80(m.)
 ri44= 9.03(m.) ri55= 40.62(m.) ri66= 40.62(m.)

Form of ship_b:
 MCDV

panel file : panel_b.in
 Ship_b geometrical principals:
 L= 52.00(m.) B= 10.76(m.) T= 3.40(m.) Vol= 1065.89(m.^3) Cb= .56
 Xg= -.86(m.) Yg= .00(m.) Zg= 1.01(m.)
 ri44= 3.67(m.) ri55= 14.56(m.) ri66= 14.56(m.)

separation distance: Dy= 25.44(m.) Dx= .00(m.)

ship speed: 5.144(m/s)

number of wave heading angles: 7
 no. heading(Deg.)

- 1 45.
- 2 90.
- 3 135.
- 4 180.
- 5 225.
- 6 270.
- 7 315.

number of wave length to ship length ratios: 15
 no. Lambda/L

- 1 .20
- 2 .60
- 3 1.00
- 4 1.40
- 5 1.80
- 6 2.20
- 7 2.60
- 8 3.00
- 9 3.40
- 10 3.80
- 11 4.20
- 12 4.60
- 13 5.00
- 14 5.40
- 15 5.80

control parameters for viscous damping and m-term: 1 1

non-dimensional wave exciting forces on ship_a (Heading = 45.0 (Deg.)

no. Lamda/Lb	f1	f2	f3	f4	f5	f6
1 .20000	.00180	.00205	.00845	.00006	.00160	.00192
2 .60000	.00979	.01629	.01846	.00022	.00689	.00618
3 1.00000	.00894	.05487	.08011	.00097	.01339	.02382

Jul 27 1996 13:27

shipint.out

Page 2

4	1.40000	.02682	.08453	.02091	.00032	.02632	.00479
5	1.80000	.02558	.01516	.08754	.00055	.03023	.03283
6	2.20000	.03345	.05316	.13234	.00087	.03730	.04311
7	2.60000	.04340	.09718	.16918	.00094	.04534	.04405
8	3.00000	.05029	.12183	.20381	.00090	.05137	.04148
9	3.40000	.05425	.13397	.23634	.00084	.05515	.03790
10	3.80000	.05612	.13861	.26632	.00077	.05716	.03428
11	4.20000	.05661	.13889	.29362	.00070	.05793	.03097
12	4.60000	.05622	.13669	.31835	.00063	.05784	.02804
13	5.00000	.05527	.13313	.34072	.00058	.05720	.02551
14	5.40000	.05399	.12889	.36096	.00053	.05620	.02331
15	5.80000	.05252	.12436	.37932	.00049	.05498	.02142

phase angle (Deg.) of wave exciting forces on ship_a

no.	Lamda/Lb	pf1	pf2	pf3	pf4	pf5	pf6
1	.200	100.963	-71.781	106.932	-73.288	81.375	-75.599
2	.600	-87.758	-119.204	-150.214	-46.105	-97.200	10.266
3	1.000	4.182	-163.447	-26.185	139.300	-6.589	135.505
4	1.400	-121.433	-129.335	-160.087	178.217	-126.909	8.536
5	1.800	-175.372	-130.075	122.041	-34.007	-179.887	-13.762
6	2.200	141.139	70.357	94.783	-20.971	142.785	-11.721
7	2.600	121.707	72.350	74.895	-14.575	122.189	-10.008
8	3.000	112.127	74.493	60.506	-10.224	110.383	-8.756
9	3.400	106.579	76.212	50.048	-6.950	102.879	-7.825
10	3.800	103.021	77.557	42.272	-4.356	97.680	-7.109
11	4.200	100.586	78.612	36.332	-2.232	93.830	-6.541
12	4.600	98.844	79.447	31.679	-.451	90.823	-6.078
13	5.000	97.554	80.116	27.955	1.069	88.371	-5.693
14	5.400	96.573	80.656	24.917	2.383	86.297	-5.368
15	5.800	95.811	81.097	22.399	3.533	84.489	-5.088

nondimensional wave exciting forces on ship_b (Heading = 45.0 (Deg.))

no.	Lamda/Lb	f1	f2	f3	f4	f5	f6
1	.20000	.00538	.00318	.00876	.00099	.00585	.00121
2	.60000	.00563	.03150	.11895	.00218	.01417	.02107
3	1.00000	.04352	.07906	.15687	.00260	.07298	.02480
4	1.40000	.04384	.06986	.16834	.00186	.06853	.01716
5	1.80000	.03529	.05596	.17561	.00138	.05593	.01233
6	2.20000	.02951	.04876	.20386	.00113	.04889	.00993
7	2.60000	.02594	.04487	.24820	.00098	.04506	.00863
8	3.00000	.02351	.04219	.29453	.00088	.04259	.00780
9	3.40000	.02168	.03994	.33689	.00080	.04072	.00721
10	3.80000	.02019	.03790	.37396	.00074	.03919	.00676
11	4.20000	.01893	.03600	.40599	.00068	.03787	.00638
12	4.60000	.01782	.03424	.43367	.00064	.03674	.00607
13	5.00000	.01685	.03260	.45769	.00060	.03575	.00580
14	5.40000	.01599	.03107	.47869	.00056	.03490	.00556
15	5.80000	.01522	.02967	.49717	.00053	.03416	.00535

phase angle (Deg.) of wave exciting forces on ship_b

no.	Lamda/Lb	pf1	pf2	pf3	pf4	pf5	pf6
1	.200	51.437	101.115	26.923	-137.514	45.591	-146.460
2	.600	124.261	-124.023	-2.897	-149.866	18.899	145.289
3	1.000	-38.420	-37.615	-57.012	-138.823	-33.604	-132.779

Jul 27 1996 13:27

shipint.out

4	1.400	-19.077	-4.966	-90.755	-117.670	-24.648	-96.078
5	1.800	1.078	19.641	-77.705	-98.886	-9.374	-69.814
6	2.200	19.328	38.750	-57.506	-84.711	3.946	-50.118
7	2.600	34.088	52.533	-43.209	-74.620	13.127	-35.856
8	3.000	45.633	62.354	-34.279	-67.306	18.901	-25.534
9	3.400	54.756	69.516	-28.469	-61.780	22.373	-17.892
10	3.800	62.158	74.905	-24.441	-57.426	24.350	-12.073
11	4.200	68.340	79.082	-21.494	-53.870	25.349	-7.522
12	4.600	73.641	82.403	-19.245	-50.880	25.696	-3.879
13	5.000	78.287	85.101	-17.470	-48.306	25.602	-.903
14	5.400	82.437	87.333	-16.032	-46.049	25.209	1.568
15	5.800	86.198	89.207	-14.843	-44.038	24.613	3.651

nondimensional transfer function: motion dispt. amplitudes on ship_a

Heading = 45.0 (Deg.)

no.	Lamda/Lb	y1/a	y2/a	y3/a	y4/ka	y5/ka	y6/ka
1	.200	.04971	.03286	.01214	.00822	.00038	.00438
2	.600	.04497	.01843	.08162	.00573	.01821	.00609
3	1.000	.05756	.05329	.11396	.03983	.04528	.02837
4	1.400	.18655	.12572	.17786	.02670	.14814	.01980
5	1.800	.22391	.02180	.26723	.03256	.18595	.11712
6	2.200	.31864	.13911	.30034	.08647	.24770	.19991
7	2.600	.43872	.26443	.36661	.12979	.33272	.26067
8	3.000	.54421	.36253	.45161	.16440	.41279	.30410
9	3.400	.62756	.43742	.53282	.19311	.47930	.33537
10	3.800	.69124	.49460	.60269	.21809	.53243	.35828
11	4.200	.73942	.53864	.66071	.24087	.57448	.37540
12	4.600	.77587	.57294	.70848	.26246	.60785	.38847
13	5.000	.80351	.59997	.74785	.28359	.63453	.39864
14	5.400	.82454	.62151	.78051	.30475	.65604	.40672
15	5.800	.84054	.63885	.80779	.32628	.67355	.41327

phase angle(Deg.) of motions of ship_a:

Heading = 45.0 (Deg.)

no.	Lamda/Lb	pm1	pm2	pm3	pm4	pm5	pm6
1	.200	-79.462	80.705	106.305	134.717	75.995	116.235
2	.600	51.904	30.824	143.997	131.504	-134.873	-160.775
3	1.000	112.797	86.590	-54.187	-37.487	-60.168	-19.400
4	1.400	22.032	81.758	75.331	-40.652	-156.969	167.427
5	1.800	-24.694	23.743	71.574	164.183	161.833	171.536
6	2.200	-58.966	-83.599	49.567	157.584	129.048	173.391
7	2.600	-74.615	-87.678	29.753	155.495	111.891	174.643
8	3.000	-81.913	-88.900	18.052	153.627	103.433	175.601
9	3.400	-85.760	-89.445	11.602	151.637	98.881	176.400
10	3.800	-88.012	-89.734	7.862	149.517	96.199	177.109
11	4.200	-89.446	-89.904	5.543	147.308	94.496	177.769
12	4.600	-90.424	-90.011	4.020	145.055	93.348	178.406
13	5.000	-91.133	-90.082	2.971	142.798	92.535	179.036
14	5.400	-91.675	-90.131	2.221	140.568	91.935	179.667
15	5.800	-92.107	-90.167	1.668	138.389	91.476	-179.693

nondimensional transfer function: motion dispt. amplitudes on ship_b

Heading = 45.0 (Deg.)

no.	Lamda/Lb	y1/a	y2/a	y3/a	y4/ka	y5/ka	y6/ka
-----	----------	------	------	------	-------	-------	-------

Jul 27 1996 13:27

shipint.out

Page 4

1	.200	.40259	.23117	.00933	.03643	.00279	.05011
2	.600	.15899	.15209	.29012	.69614	.04863	.18432
3	1.000	.93587	.54402	.45684	.64199	.39286	.28736
4	1.400	.73037	.49514	.35926	.54542	.37972	.24211
5	1.800	.68535	.54780	.39314	.57049	.40449	.26172
6	2.200	.76464	.62795	.54920	.57845	.48285	.28228
7	2.600	.84117	.68596	.67299	.56947	.55606	.29495
8	3.000	.89572	.72371	.76030	.55291	.61312	.30422
9	3.400	.93212	.74764	.82183	.53309	.65594	.31361
10	3.800	.95604	.76246	.86606	.51182	.68805	.32505
11	4.200	.97172	.77123	.89868	.48990	.71243	.33948
12	4.600	.98202	.77591	.92332	.46774	.73122	.35719
13	5.000	.98877	.77781	.94236	.44551	.74595	.37815
14	5.400	.99321	.77777	.95737	.42334	.75766	.40216
15	5.800	.99612	.77636	.96941	.40126	.76711	.42893

phase angle(Deg.) of motions of ship_b:

Heading = 45.0 (Deg.)

no.	Lamda/Lb	pm1	pm2	pm3	pm4	pm5	pm6
1	.200	-126.732	-89.314	20.584	-133.842	42.806	27.405
2	.600	-91.195	91.014	-20.538	-147.597	59.645	-34.579
3	1.000	122.381	133.293	-161.653	-146.383	-50.203	29.696
4	1.400	153.299	176.850	-129.845	-118.553	-22.561	74.816
5	1.800	-170.391	-149.240	-74.555	-103.726	10.400	100.904
6	2.200	-148.644	-133.293	-52.461	-98.731	29.702	111.172
7	2.600	-135.898	-125.175	-43.000	-96.971	40.801	114.728
8	3.000	-127.249	-120.247	-37.374	-96.282	48.132	115.146
9	3.400	-120.743	-116.832	-33.396	-95.958	53.475	113.933
10	3.800	-115.534	-114.251	-30.330	-95.762	57.609	111.878
11	4.200	-111.192	-112.189	-27.853	-95.611	60.931	109.466
12	4.600	-107.470	-110.481	-25.790	-95.480	63.674	107.005
13	5.000	-104.213	-109.031	-24.036	-95.364	65.982	104.688
14	5.400	-101.315	-107.776	-22.521	-95.265	67.956	102.619
15	5.800	-98.705	-106.676	-21.197	-95.186	69.665	100.846

RMS displacements and accelerations of ship-a
(Heading= 45.0(Deg.) average period T1=8.123(sec)

motion_mode j	Dj	Aj
1	.4325 (m)	.0095 (g)
2	.2954 (m)	.0061 (g)
3	.3875 (m)	.0086 (g)
4	.2807 (deg)	.0699 (deg/s^2)
5	.7281 (deg)	.1857 (deg/s^2)
6	.4970 (deg)	.1215 (deg/s^2)

RMS displacements and accelerations of ship-b
(Heading= 45.0(Deg.) average period T1=8.123(sec)

motion_mode j	Dj	Aj
1	.7573 (m)	.0211 (g)
2	.5855 (m)	.0156 (g)
3	.5970 (m)	.0147 (g)
4	2.7345 (deg)	1.0576 (deg/s^2)
5	1.4884 (deg)	.4861 (deg/s^2)
6	.9964 (deg)	.3671 (deg/s^2)

Jul 27 1996 13:27

shipint.out

Page 5

nondimensional wave exciting forces on ship_a (Heading = 90.0 (Deg.))

no.	Lamda/Lb	f1	f2	f3	f4	f5	f6
1	.20000	.00300	.03031	.02464	.00008	.00169	.00954
2	.60000	.00641	.26859	.13890	.00106	.00805	.02818
3	1.00000	.01136	.40935	.18018	.00186	.00540	.03133
4	1.40000	.01187	.45911	.26472	.00193	.00601	.02899
5	1.80000	.01108	.48033	.31575	.00187	.00619	.02444
6	2.20000	.01047	.46976	.35811	.00169	.00623	.02082
7	2.60000	.01101	.44367	.39634	.00148	.00560	.01796
8	3.00000	.01157	.41442	.42325	.00129	.00551	.01600
9	3.40000	.01175	.38450	.43987	.00113	.00630	.01471
10	3.80000	.01159	.35543	.44981	.00100	.00749	.01379
11	4.20000	.01121	.32831	.45617	.00089	.00871	.01306
12	4.60000	.01074	.30368	.46095	.00080	.00979	.01246
13	5.00000	.01023	.28164	.46523	.00073	.01072	.01193
14	5.40000	.00973	.26205	.46952	.00067	.01151	.01147
15	5.80000	.00925	.24468	.47400	.00061	.01217	.01105

phase angle (Deg.) of wave exciting forces on ship_a

no.	Lamda/Lb	pf1	pf2	pf3	pf4	pf5	pf6
1	.200	-29.143	21.860	2.448	98.655	-15.495	-175.120
2	.600	-149.494	107.092	112.061	91.012	89.015	18.591
3	1.000	-157.535	72.177	70.161	56.461	84.986	10.689
4	1.400	-158.681	67.347	50.707	54.638	60.592	15.787
5	1.800	-153.566	64.630	43.160	53.589	41.052	19.249
6	2.200	-155.595	66.779	36.359	56.199	34.115	20.771
7	2.600	-155.530	69.114	32.577	58.176	23.176	20.215
8	3.000	-151.255	71.454	30.519	59.429	5.946	18.334
9	3.400	-145.366	73.708	29.004	60.218	-8.451	16.337
10	3.800	-139.432	75.718	27.537	60.647	-16.197	14.715
11	4.200	-134.057	77.419	25.991	60.774	-19.574	13.486
12	4.600	-129.393	78.818	24.381	60.655	-20.791	12.544
13	5.000	-125.412	79.953	22.761	60.344	-21.009	11.793
14	5.400	-122.028	80.869	21.183	59.888	-20.779	11.167
15	5.800	-119.145	81.610	19.680	59.326	-20.359	10.626

nondimensional wave exciting forces on ship_b (Heading = 90.0 (Deg.))

no.	Lamda/Lb	f1	f2	f3	f4	f5	f6
1	.20000	.04137	.13746	.12641	.00182	.04856	.03568
2	.60000	.00165	.00579	.00858	.00012	.00163	.00223
3	1.00000	.00253	.01726	.02361	.00018	.00350	.00168
4	1.40000	.00636	.05506	.12716	.00026	.00236	.00305
5	1.80000	.00572	.02897	.08246	.00026	.00365	.00270
6	2.20000	.00808	.04577	.12746	.00043	.00702	.00415
7	2.60000	.00947	.05523	.19300	.00053	.01034	.00503
8	3.00000	.01009	.05844	.25067	.00059	.01330	.00553
9	3.40000	.01026	.05859	.29981	.00061	.01581	.00582
10	3.80000	.01020	.05724	.34171	.00061	.01786	.00597
11	4.20000	.01004	.05518	.37746	.00061	.01952	.00602
12	4.60000	.00984	.05282	.40802	.00060	.02087	.00602
13	5.00000	.00964	.05039	.43428	.00058	.02198	.00598
14	5.40000	.00945	.04802	.45698	.00057	.02291	.00592
15	5.80000	.00928	.04577	.47677	.00055	.02369	.00584

Jul 27 1996 13:27

shipint.out

phase angle (Deg.) of wave exciting forces on ship_b

no.	Lamda/Lb	pf1	pf2	pf3	pf4	pf5	pf6
1	.200	-158.069	41.010	29.604	67.289	-148.727	34.761
2	.600	-100.849	-45.114	-7.065	25.286	-47.253	117.659
3	1.000	47.321	-134.700	-125.596	-120.580	3.571	-84.130
4	1.400	144.800	30.961	-15.719	-103.532	129.840	-42.907
5	1.800	141.256	18.789	-22.770	-134.499	-170.451	-64.061
6	2.200	150.073	15.126	-47.981	-128.161	-136.727	-58.199
7	2.600	162.599	27.299	-48.818	-115.022	-115.322	-47.310
8	3.000	172.821	37.971	-45.318	-103.939	-100.094	-38.454
9	3.400	-179.435	46.493	-41.509	-94.841	-88.413	-31.379
10	3.800	-173.703	53.336	-38.006	-87.273	-79.156	-25.620
11	4.200	-169.490	58.900	-34.897	-80.904	-71.684	-20.875
12	4.600	-166.390	63.479	-32.175	-75.487	-65.563	-16.929
13	5.000	-164.102	67.291	-29.802	-70.832	-60.481	-13.619
14	5.400	-162.406	70.501	-27.733	-66.791	-56.210	-10.820
15	5.800	-161.146	73.231	-25.927	-63.249	-52.578	-8.431

nondimensional transfer function: motion dispt. amplitudes on ship_a

Heading = 90.0 (Deg.)

no.	Lamda/Lb	y1/a	y2/a	y3/a	y4/ka	y5/ka	y6/ka
1	.200	.00098	.01394	.00283	.00010	.00005	.00029
2	.600	.00656	.20476	.08174	.00827	.00370	.00720
3	1.000	.02736	.38374	.32192	.02133	.00963	.01211
4	1.400	.06539	.53056	1.01728	.03487	.02877	.01271
5	1.800	.10279	.61148	1.56319	.03550	.09303	.01828
6	2.200	.09186	.63972	1.51960	.03739	.07497	.01669
7	2.600	.08624	.70147	1.30027	.03495	.08581	.01245
8	3.000	.09727	.75213	1.16785	.03014	.10938	.01269
9	3.400	.10937	.78907	1.10439	.02356	.12562	.01416
10	3.800	.11826	.81621	1.07652	.01660	.13478	.01602
11	4.200	.12382	.83663	1.06485	.01369	.13897	.01819
12	4.600	.12692	.85241	1.05979	.02019	.14010	.02066
13	5.000	.12840	.86491	1.05714	.03245	.13947	.02348
14	5.400	.12889	.87504	1.05525	.04735	.13790	.02668
15	5.800	.12882	.88338	1.05355	.06401	.13591	.03026

phase angle(Deg.) of motions of ship_a:

Heading = 90.0 (Deg.)

no.	Lamda/Lb	pm1	pm2	pm3	pm4	pm5	pm6
1	.200	144.575	179.893	-173.937	-113.976	-113.976	25.877
2	.600	50.082	-50.147	-61.725	-52.952	-100.471	-137.046
3	1.000	47.492	-74.838	-95.603	-80.417	-83.570	-121.518
4	1.400	76.482	-82.334	-80.959	-79.865	-95.199	-103.309
5	1.800	124.367	-82.900	-42.208	-80.454	-48.690	-101.293
6	2.200	158.560	-87.114	-16.988	-81.433	-13.492	-67.397
7	2.600	165.244	-90.042	-6.223	-78.889	-16.076	-69.588
8	3.000	171.389	-90.763	-3.477	-74.268	-5.612	-78.678
9	3.400	-179.712	-90.838	-3.147	-65.100	7.219	-83.996
10	3.800	-170.656	-90.728	-3.277	-44.748	18.807	-87.582
11	4.200	-162.590	-90.579	-3.319	-3.319	28.583	28.583
12	4.600	-155.785	-90.440	-3.208	39.426	36.655	-93.193
13	5.000	-150.177	-90.322	-3.002	57.352	43.283	-95.609
14	5.400	-145.604	-90.225	-2.756	65.785	48.738	-97.771
15	5.800	-141.892	-90.146	-2.505	70.515	53.248	-99.660

Jul 27 1996 13:27

shipint.out

nondimensional transfer function: motion dispt. amplitudes on ship_b

Heading = 90.0 (Deg.)

no.	Lamda/Lb	y1/a	y2/a	y3/a	y4/ka	y5/ka	y6/ka
1	.200	.01530	.06053	.05869	.00929	.01288	.00624
2	.600	.02990	.17073	.24121	.04494	.05517	.01300
3	1.000	.01692	.27286	.38071	.20352	.03087	.02275
4	1.400	.12199	.11396	.15418	.42003	.18414	.01330
5	1.800	.24156	.30488	.26989	1.85821	.34617	.09743
6	2.200	.21429	.63276	.74791	1.80091	.33447	.12805
7	2.600	.17126	.75469	.92654	1.44344	.27851	.13592
8	3.000	.16500	.79998	.98593	1.22100	.25779	.14830
9	3.400	.17415	.82686	1.01911	1.08604	.25094	.16392
10	3.800	.18810	.84653	1.04080	.99387	.24751	.18122
11	4.200	.20295	.86152	1.05463	.92404	.24459	.19957
12	4.600	.21743	.87282	1.06293	.86702	.24171	.21877
13	5.000	.23128	.88115	1.06755	.81806	.23897	.23873
14	5.400	.24452	.88714	1.06982	.77454	.23653	.25940
15	5.800	.25727	.89130	1.07067	.73494	.23448	.28078

phase angle(Deg.) of motions of ship_b:

Heading = 90.0 (Deg.)

no.	Lamda/Lb	pm1	pm2	pm3	pm4	pm5	pm6
1	.200	52.794	-106.883	-146.472	-64.408	70.569	-98.691
2	.600	13.694	140.744	-166.449	-15.147	-144.552	-23.232
3	1.000	71.500	-135.603	-61.939	62.587	-61.971	-172.365
4	1.400	-146.744	-87.760	-36.785	-157.872	50.870	-98.482
5	1.800	-25.120	141.024	-145.001	53.864	168.487	-135.741
6	2.200	73.290	173.784	-116.538	136.744	-100.054	-66.865
7	2.600	132.645	-163.819	-89.255	172.778	-51.324	-35.733
8	3.000	170.649	-151.188	-73.913	-169.412	-22.893	-17.606
9	3.400	-162.144	-143.004	-63.738	-158.461	-2.756	-4.693
10	3.800	-141.632	-137.042	-56.147	-150.779	12.724	5.324
11	4.200	-125.713	-132.378	-50.154	-144.978	24.979	13.458
12	4.600	-113.094	-128.577	-45.292	-140.411	34.825	20.276
13	5.000	-102.907	-125.401	-41.279	-136.724	42.830	26.141
14	5.400	-94.546	-122.702	-37.920	-133.700	49.414	31.300
15	5.800	-87.578	-120.380	-35.074	-131.193	54.889	35.918

RMS displacements and accelerations of ship-a
(Heading= 90.0(Deg.) average period T1=8.123(sec)

motion_mode j	Dj	Aj
1	.0856 (m)	.0041 (g)
2	.6116 (m)	.0319 (g)
3	1.0614 (m)	.0582 (g)
4	.0962 (deg)	.0854 (deg/s^2)
5	.2094 (deg)	.1120 (deg/s^2)
6	.0482 (deg)	.0521 (deg/s^2)

RMS displacements and accelerations of ship-b
(Heading= 90.0(Deg.) average period T1=8.123(sec)

motion_mode j	Dj	Aj
---------------	----	----

Jul 27 1996 13:27

shipint.out

1	.1633 (m)	.0085 (g)
2	.5861 (m)	.0261 (g)
3	.7137 (m)	.0323 (g)
4	3.4276 (deg)	2.1285 (deg/s^2)
5	.7245 (deg)	.7153 (deg/s^2)
6	.2877 (deg)	.1656 (deg/s^2)

nondimensional wave exciting forces on ship_a (Heading = 135.0 (Deg.))

no.	Lamda/Lb	f1	f2	f3	f4	f5	f6
1	.20000	.00094	.01082	.00323	.00006	.00148	.00578
2	.60000	.00771	.01807	.01884	.00037	.00582	.01273
3	1.00000	.01694	.02564	.01146	.00104	.00537	.02146
4	1.40000	.01394	.03814	.06566	.00015	.00766	.01855
5	1.80000	.02626	.13127	.03209	.00123	.02520	.04144
6	2.20000	.05359	.02663	.07165	.00082	.04773	.05678
7	2.60000	.06657	.07217	.12773	.00099	.06116	.06001
8	3.00000	.07263	.12368	.19296	.00105	.06731	.05740
9	3.40000	.07419	.15521	.24888	.00101	.06898	.05148
10	3.80000	.07318	.17331	.29460	.00093	.06830	.04394
11	4.20000	.07130	.18193	.33103	.00083	.06684	.03643
12	4.60000	.06932	.18399	.35955	.00074	.06526	.02984
13	5.00000	.06744	.18172	.38188	.00066	.06373	.02439
14	5.40000	.06564	.17681	.39962	.00060	.06228	.01999
15	5.80000	.06387	.17045	.41408	.00055	.06086	.01647

phase angle (Deg.) of wave exciting forces on ship_a

no.	Lamda/Lb	pf1	pf2	pf3	pf4	pf5	pf6
1	.200	-21.497	95.978	3.255	150.139	23.353	72.133
2	.600	133.921	-119.731	170.554	-99.666	161.799	-153.567
3	1.000	120.196	1.711	-27.315	26.209	98.753	-7.432
4	1.400	94.423	-166.715	-159.860	107.705	134.095	-158.539
5	1.800	-64.650	164.378	-85.510	169.971	-80.069	164.113
6	2.200	-71.828	-146.187	36.520	163.093	-78.686	155.495
7	2.600	-75.585	56.488	24.528	139.584	-77.002	155.212
8	3.000	-78.320	58.786	20.348	133.255	-76.066	157.237
9	3.400	-80.178	61.278	18.866	130.664	-75.541	160.968
10	3.800	-82.017	64.043	18.143	128.698	-75.672	164.862
11	4.200	-83.983	66.832	17.714	126.214	-76.259	167.950
12	4.600	-85.846	69.467	17.337	123.212	-76.951	169.998
13	5.000	-87.431	71.831	16.892	120.022	-77.526	171.128
14	5.400	-88.691	73.877	16.344	116.893	-77.903	171.546
15	5.800	-89.657	75.606	15.702	113.939	-78.076	171.432

nondimensional wave exciting forces on ship_b (Heading = 135.0 (Deg.))

no.	Lamda/Lb	f1	f2	f3	f4	f5	f6
1	.20000	.01538	.04752	.06193	.00069	.03388	.01302
2	.60000	.02331	.04947	.21237	.00223	.02583	.03013
3	1.00000	.04249	.07753	.04376	.00212	.05346	.04012
4	1.40000	.06174	.09620	.25019	.00288	.09085	.03629
5	1.80000	.03375	.28417	.56037	.00254	.05621	.01824
6	2.20000	.04804	.20808	.34766	.00070	.05719	.00479
7	2.60000	.03622	.10472	.30251	.00038	.04786	.00371
8	3.00000	.03180	.07372	.34594	.00031	.04184	.00381
9	3.40000	.03111	.05969	.37875	.00026	.04002	.00368

Jul 27 1996 13:27

shipint.out

10	3.80000	.03132	.05175	.40303	.00023	.04033	.00338
11	4.20000	.03124	.04688	.42359	.00022	.04099	.00314
12	4.60000	.03074	.04361	.44239	.00023	.04135	.00303
13	5.00000	.02997	.04114	.45984	.00024	.04137	.00304
14	5.40000	.02908	.03908	.47594	.00025	.04117	.00309
15	5.80000	.02814	.03724	.49065	.00026	.04083	.00316

phase angle (Deg.) of wave exciting forces on ship_b

no.	Lamda/Lb	pf1	pf2	pf3	pf4	pf5	pf6
1	.200	162.898	-22.449	156.970	7.995	150.449	-18.103
2	.600	91.267	89.496	-4.126	-158.013	37.106	-49.090
3	1.000	-178.173	8.092	-115.847	59.173	164.146	80.270
4	1.400	-149.280	-6.887	-85.095	97.909	-147.843	103.937
5	1.800	-150.909	23.415	-38.531	-168.326	-117.898	-143.097
6	2.200	-131.171	96.633	4.101	-93.362	-111.019	49.770
7	2.600	-124.829	109.416	-11.890	-72.107	-101.320	65.114
8	3.000	-128.954	107.626	-15.010	-50.329	-99.866	59.016
9	3.400	-132.284	105.015	-14.285	-38.433	-100.438	57.643
10	3.800	-132.788	102.426	-13.420	-35.794	-99.434	54.416
11	4.200	-131.693	100.327	-12.820	-37.344	-96.698	48.685
12	4.600	-130.148	98.980	-12.367	-38.854	-93.169	42.290
13	5.000	-128.647	98.340	-11.954	-39.061	-89.478	36.846
14	5.400	-127.337	98.226	-11.543	-38.221	-85.899	32.838
15	5.800	-126.239	98.449	-11.131	-36.804	-82.530	30.073

nondimensional transfer function: motion dispt. amplitudes on ship_a

Heading = 135.0 (Deg.)

no.	Lamda/Lb	y1/a	y2/a	y3/a	y4/ka	y5/ka	y6/ka
1	.200	.00006	.00065	.00017	.00001	.00001	.00006
2	.600	.00252	.00362	.00658	.00117	.00079	.00202
3	1.000	.01248	.02040	.00598	.01222	.00349	.00900
4	1.400	.00895	.09277	.07711	.01204	.01470	.01640
5	1.800	.03752	.05239	.04360	.01594	.09832	.05378
6	2.200	.04802	.06988	.46615	.02099	.37696	.10296
7	2.600	.05484	.16696	1.31449	.04573	.77636	.16296
8	3.000	.13508	.26326	1.39094	.07303	1.01389	.18960
9	3.400	.23714	.32398	1.14201	.08786	1.04106	.20468
10	3.800	.30772	.35763	1.02967	.10116	1.01991	.22904
11	4.200	.36061	.38723	.96810	.11353	.99675	.24946
12	4.600	.39822	.41504	.93066	.12455	.96547	.26446
13	5.000	.42166	.43987	.91465	.13437	.92559	.27548
14	5.400	.43391	.46116	.91549	.14329	.88148	.28384
15	5.800	.43859	.47908	.92653	.15155	.83783	.29040

phase angle (Deg.) of motions of ship_a:

Heading = 135.0 (Deg.)

no.	Lamda/Lb	pm1	pm2	pm3	pm4	pm5	pm6
1	.200	146.813	-75.873	175.399	175.399	175.399	175.399
2	.600	-47.059	106.735	5.604	95.818	-12.752	36.858
3	1.000	-58.368	-101.197	120.921	-129.943	-91.422	-171.219
4	1.400	-93.541	86.782	22.245	135.077	-28.460	78.459
5	1.800	147.496	125.489	-35.798	72.990	119.590	13.625
6	2.200	137.760	-134.628	-102.740	33.210	148.062	3.290
7	2.600	83.746	-112.948	-56.431	-5.341	179.863	2.429

Jul 27 1996 13:27

shipint.out

8	3.000	55.406	-102.806	-15.602	-1.675	-149.638	6.791
9	3.400	64.072	-94.617	-2.173	-.521	-129.272	3.234
10	3.800	72.358	-91.726	.781	-1.213	-117.374	.802
11	4.200	78.799	-91.118	1.425	-1.305	-108.901	.168
12	4.600	84.340	-90.934	.639	-.848	-102.180	.000
13	5.000	89.005	-90.723	-.860	.000	-96.881	-.272
14	5.400	92.710	-90.456	-2.370	1.023	-92.888	-.612
15	5.800	95.479	-90.177	-3.510	2.281	-90.046	-1.055

nondimensional transfer function: motion dispt. amplitudes on ship_b

Heading = 135.0 (Deg.)

no.	Lamda/Lb	y1/a	y2/a	y3/a	y4/ka	y5/ka	y6/ka
1	.200	.00177	.00943	.00510	.00089	.00210	.00105
2	.600	.02843	.06383	.19386	.05689	.04793	.03146
3	1.000	.00703	.06939	.62677	.11903	.42235	.10400
4	1.400	.15897	.44644	1.06791	.69338	.83187	.35677
5	1.800	.20027	.44355	.65476	1.03247	.68165	.27014
6	2.200	.34179	.36494	.30952	1.81208	.79650	.19740
7	2.600	.22223	.27522	.42868	.59705	.40487	.15023
8	3.000	.06574	.34876	1.07111	1.27188	.12535	.06712
9	3.400	.28514	.40356	1.10565	1.01104	.53978	.15680
10	3.800	.40220	.41941	1.00205	.86977	.71936	.21845
11	4.200	.44325	.43061	.94674	.79738	.76654	.25873
12	4.600	.44609	.43910	.93468	.74568	.75542	.28713
13	5.000	.42974	.44695	.94748	.70605	.71818	.30827
14	5.400	.40571	.45530	.97081	.67409	.67174	.32453
15	5.800	.38121	.46411	.99575	.64669	.62546	.33739

phase angle(Deg.) of motions of ship_b:

Heading = 135.0 (Deg.)

no.	Lamda/Lb	pm1	pm2	pm3	pm4	pm5	pm6
1	.200	-1.347	160.820	-19.691	-159.040	-34.685	165.973
2	.600	-47.163	-111.338	-160.472	21.915	-122.305	120.839
3	1.000	46.743	111.164	149.937	-122.198	47.823	-90.295
4	1.400	-4.549	-131.098	-65.528	-34.313	163.996	-46.076
5	1.800	10.062	-74.644	-28.761	23.177	-167.543	4.590
6	2.200	48.730	-41.051	-9.474	86.221	-125.637	27.339
7	2.600	103.452	50.242	-124.058	-161.131	-73.850	69.425
8	3.000	-111.584	158.124	-81.650	133.261	93.692	-130.011
9	3.400	-22.150	-157.396	-52.922	167.258	165.306	-75.838
10	3.800	8.363	-140.271	-41.979	178.733	-164.708	-55.813
11	4.200	26.763	-131.464	-38.334	-173.005	-145.718	-42.879
12	4.600	39.013	-126.148	-36.929	-166.511	-132.420	-33.229
13	5.000	47.139	-122.707	-35.840	-161.310	-122.850	-25.445
14	5.400	52.079	-120.288	-34.470	-156.996	-116.060	-18.878
15	5.800	54.479	-118.403	-32.794	-153.325	-111.422	-13.180

RMS displacements and accelerations of ship-a
(Heading= 135.0(Deg.) average period T1=8.123(sec)

motion_mode j	Dj	Aj
1	.1735 (m)	.0077 (g)
2	.2124 (m)	.0112 (g)
3	.7641 (m)	.0456 (g)
4	.1172 (deg)	.1805 (deg/s^2)
5	1.3215 (deg)	.8006 (deg/s^2)

Jul 27 1996 13:27

shipint.out

Page 11

6 .2982 (deg) .2105 (deg/s^2)

RMS displacements and accelerations of ship-b
(Heading= 135.0 (Deg.) average period T1=8.123 (sec))

motion_mode j	Dj	Aj
1	.2475 (m)	.0178 (g)
2	.3338 (m)	.0317 (g)
3	.7224 (m)	.0771 (g)
4	2.7455 (deg)	2.8466 (deg/s^2)
5	2.0050 (deg)	5.9208 (deg/s^2)
6	.7085 (deg)	1.2102 (deg/s^2)

nondimensional wave exciting forces on ship_a (Heading = 180.0 (Deg.))

no.	Lamda/Lb	f1	f2	f3	f4	f5	f6
1	.20000	.00202	.00170	.00367	.00002	.00260	.00072
2	.60000	.00899	.04955	.02026	.00023	.00621	.00433
3	1.00000	.01541	.01014	.00883	.00008	.01032	.00391
4	1.40000	.02586	.01894	.07651	.00016	.02275	.00222
5	1.80000	.02412	.05863	.05194	.00036	.01313	.00427
6	2.20000	.00562	.15605	.01184	.00079	.01234	.00279
7	2.60000	.03473	.12280	.05669	.00045	.03858	.00239
8	3.00000	.05466	.08832	.06698	.00026	.05676	.00192
9	3.40000	.06713	.07283	.11320	.00019	.06760	.00214
10	3.80000	.07413	.06277	.16317	.00016	.07342	.00231
11	4.20000	.07743	.05454	.20846	.00013	.07606	.00227
12	4.60000	.07858	.04739	.24788	.00012	.07693	.00212
13	5.00000	.07860	.04121	.28157	.00010	.07687	.00194
14	5.40000	.07800	.03593	.31015	.00009	.07630	.00175
15	5.80000	.07705	.03147	.33443	.00008	.07544	.00159

phase angle (Deg.) of wave exciting forces on ship_a

no.	Lamda/Lb	pf1	pf2	pf3	pf4	pf5	pf6
1	.200	-29.340	-109.260	-46.346	170.099	-37.148	176.968
2	.600	-60.963	67.486	-92.628	114.020	-86.270	75.812
3	1.000	-73.654	144.456	-43.747	150.768	-91.684	-152.784
4	1.400	91.085	119.864	107.134	130.048	72.180	-136.640
5	1.800	100.999	149.257	-168.154	158.937	109.154	-59.178
6	2.200	-75.046	-154.609	71.823	-136.712	-101.506	22.965
7	2.600	-76.823	-94.509	91.281	-76.903	-89.935	111.189
8	3.000	-78.740	-73.414	51.735	-61.620	-84.661	147.378
9	3.400	-80.292	-60.837	30.277	-55.660	-82.350	169.602
10	3.800	-81.523	-50.113	23.006	-51.992	-81.180	-168.565
11	4.200	-82.759	-40.679	19.597	-47.955	-80.729	-150.323
12	4.600	-84.090	-32.583	17.618	-43.466	-80.725	-136.244
13	5.000	-85.420	-25.791	16.287	-39.158	-80.925	-125.705
14	5.400	-86.645	-20.198	15.267	-35.454	-81.163	-117.890
15	5.800	-87.708	-15.659	14.399	-32.492	-81.350	-112.101

nondimensional wave exciting forces on ship_b (Heading = 180.0 (Deg.))

no.	Lamda/Lb	f1	f2	f3	f4	f5	f6
1	.20000	.00655	.00391	.02385	.00035	.00428	.00300

Jul 27 1996 13:27

shipint.out

2	.60000	.05093	.08427	.09548	.00118	.06398	.02807
3	1.00000	.04216	.02458	.03893	.00094	.05165	.00834
4	1.40000	.07285	.05345	.16975	.00109	.10188	.01068
5	1.80000	.08690	.12281	.38841	.00194	.12998	.02189
6	2.20000	.06587	.30842	.84986	.00177	.10094	.01430
7	2.60000	.08486	.20879	.65152	.00070	.10383	.00786
8	3.00000	.07522	.12199	.52784	.00037	.09789	.00493
9	3.40000	.06569	.08514	.51619	.00032	.08948	.00362
10	3.80000	.05757	.06578	.52919	.00031	.08077	.00316
11	4.20000	.05121	.05346	.54412	.00030	.07316	.00298
12	4.60000	.04645	.04477	.55628	.00029	.06703	.00288
13	5.00000	.04289	.03830	.56543	.00028	.06224	.00277
14	5.40000	.04015	.03333	.57227	.00026	.05849	.00267
15	5.80000	.03796	.02943	.57752	.00025	.05551	.00257

phase angle (Deg.) of wave exciting forces on ship_b

no.	Lamda/Lb	pf1	pf2	pf3	pf4	pf5	pf6
1	.200	-114.400	-91.598	102.796	103.769	152.605	-127.585
2	.600	105.751	-63.879	-123.737	-69.351	103.337	-77.686
3	1.000	-70.393	-131.851	-159.243	-81.757	-94.529	-56.219
4	1.400	-85.727	-63.227	-12.033	28.464	-90.230	58.935
5	1.800	-79.841	-23.741	-15.306	138.412	-78.271	156.810
6	2.200	-98.860	54.928	11.661	-106.608	-73.328	-56.264
7	2.600	-90.886	127.328	40.246	-22.636	-73.404	71.557
8	3.000	-84.952	152.045	35.017	-.465	-68.324	107.238
9	3.400	-83.190	162.105	28.255	6.526	-64.018	111.378
10	3.800	-83.397	168.006	24.181	14.357	-60.935	107.941
11	4.200	-84.921	172.158	21.770	21.949	-59.063	105.205
12	4.600	-87.086	175.161	20.169	28.233	-58.015	103.844
13	5.000	-89.388	177.311	18.950	33.169	-57.403	103.175
14	5.400	-91.556	178.827	17.915	37.000	-56.970	102.761
15	5.800	-93.489	179.882	16.973	39.986	-56.573	102.413

nondimensional transfer function: motion dispt. amplitudes on ship_a

Heading = 180.0 (Deg.)

no.	Lamda/Lb	y1/a	y2/a	y3/a	y4/ka	y5/ka	y6/ka
1	.200	.00009	.00006	.00010	.00000	.00002	.00000
2	.600	.00228	.01112	.00269	.00040	.00066	.00048
3	1.000	.00832	.00751	.00431	.00085	.00422	.00239
4	1.400	.01810	.06106	.08873	.01008	.02439	.00282
5	1.800	.02629	.02989	.12110	.00464	.03492	.00797
6	2.200	.02182	.02057	.14417	.00140	.07793	.00240
7	2.600	.02831	.02744	.21087	.00721	.37639	.00970
8	3.000	.01747	.04694	.90166	.00864	.82987	.01225
9	3.400	.12087	.06485	1.04174	.00428	1.14769	.01279
10	3.800	.22850	.06042	.88319	.00125	1.23214	.01517
11	4.200	.31028	.04493	.83550	.00298	1.25267	.01507
12	4.600	.37919	.03207	.81957	.00369	1.26612	.01381
13	5.000	.43548	.02424	.80713	.00390	1.26501	.01245
14	5.400	.47770	.02091	.80274	.00397	1.24673	.01145
15	5.800	.50689	.02038	.80974	.00404	1.21561	.01104

phase angle(Deg.) of motions of ship_a:

Heading = 180.0 (Deg.)

no.	Lamda/Lb	pm1	pm2	pm3	pm4	pm5	pm6
-----	----------	-----	-----	-----	-----	-----	-----

Jul 27 1996 13:27

shipint.out

1	.200	151.952	68.829	129.566	129.566	129.566	129.566
2	.600	118.550	-68.755	106.721	-22.999	95.824	-58.048
3	1.000	108.617	-28.934	161.686	-18.469	91.607	58.122
4	1.400	-72.790	110.226	-62.187	109.660	-109.204	74.340
5	1.800	-86.389	-162.379	9.270	-112.996	-56.590	-121.363
6	2.200	-163.325	-155.493	27.005	75.315	111.102	-135.893
7	2.600	-176.396	-170.286	-89.570	-89.570	144.355	-107.022
8	3.000	31.321	-155.662	-47.704	-107.291	175.791	-18.688
9	3.400	34.839	-124.012	-8.485	-53.995	-154.901	98.393
10	3.800	52.855	-89.392	2.727	-114.199	-135.245	-177.549
11	4.200	63.390	-67.966	3.489	-128.668	-123.900	-134.885
12	4.600	70.530	-59.313	3.542	-120.444	-115.816	-112.365
13	5.000	76.401	-60.998	2.739	-115.978	-109.241	-100.977
14	5.400	81.378	-68.277	1.102	-115.223	-103.837	-96.820
15	5.800	85.461	-74.882	-.818	-117.058	-99.537	-97.027

nondimensional transfer function: motion dispt. amplitudes on ship_b

Heading = 180.0 (Deg.)

no.	Lamda/Lb	y1/a	y2/a	y3/a	y4/ka	y5/ka	y6/ka
1	.200	.00122	.00053	.00173	.00035	.00017	.00017
2	.600	.03299	.06768	.06042	.01438	.06478	.02465
3	1.000	.04257	.04492	.09807	.05904	.23269	.03798
4	1.400	.09085	.34266	1.92372	.04179	1.07096	.12011
5	1.800	.24685	.09332	1.12812	.30231	1.21537	.15902
6	2.200	.36659	.06231	1.03572	.59274	1.29030	.13972
7	2.600	.56061	.19496	.91839	2.06579	1.53930	.19128
8	3.000	.54862	.31817	.45482	2.37213	1.26215	.32329
9	3.400	.29025	.25587	.96974	1.17637	.57706	.31832
10	3.800	.08288	.13195	1.22552	.79070	.22576	.26241
11	4.200	.33287	.07071	1.15226	.44665	.69834	.20486
12	4.600	.47197	.04745	1.04814	.24587	.92954	.15694
13	5.000	.54428	.04180	.97418	.12799	1.03207	.11734
14	5.400	.57522	.04560	.93602	.05324	1.06252	.08376
15	5.800	.58085	.05223	.92671	.01975	1.05256	.05489

phase angle(Deg.) of motions of ship_b:

Heading = 180.0 (Deg.)

no.	Lamda/Lb	pm1	pm2	pm3	pm4	pm5	pm6
1	.200	76.014	91.735	-80.561	-78.966	-28.455	53.523
2	.600	-37.314	172.366	74.836	177.782	-47.963	154.399
3	1.000	169.533	50.185	-106.083	145.953	128.558	140.156
4	1.400	48.649	-122.306	-44.053	-80.462	-166.847	-76.615
5	1.800	59.340	-31.832	1.752	42.611	-126.816	37.832
6	2.200	64.039	-33.379	3.359	46.599	-117.683	52.759
7	2.600	82.710	-13.558	14.238	116.214	-95.378	66.724
8	3.000	116.905	60.128	-2.189	-138.057	-62.102	92.890
9	3.400	154.962	125.831	-34.391	-93.455	-26.438	132.398
10	3.800	1.065	162.127	-14.397	-57.924	-165.050	157.291
11	4.200	28.848	167.175	-3.688	-32.059	-145.129	174.313
12	4.600	44.255	155.782	-.309	-15.307	-130.167	-173.493
13	5.000	55.054	138.246	-.683	-1.195	-119.126	-163.831
14	5.400	62.891	126.053	-2.713	19.143	-110.743	-155.449
15	5.800	68.450	121.801	-5.018	106.865	-104.405	-147.210

RMS displacements and accelerations of ship-a
 (Heading= 180.0(Deg.) average period T1=8.123(sec)

Jul 27 1996 13:27

shipint.out

Page 14

motion_mode j	Dj	Aj
1	.1481 (m)	.0067 (g)
2	.0368 (m)	.0046 (g)
3	.5168 (m)	.0309 (g)
4	.0175 (deg)	.0310 (deg/s ²)
5	1.2283 (deg)	.7257 (deg/s ²)
6	.0201 (deg)	.0395 (deg/s ²)

RMS displacements and accelerations of ship-b
(Heading= 180.0 (Deg.) average period T1=8.123 (sec))

motion_mode j	Dj	Aj
1	.3162 (m)	.0263 (g)
2	.1649 (m)	.0249 (g)
3	.9569 (m)	.1279 (g)
4	2.3666 (deg)	2.0261 (deg/s ²)
5	2.9574 (deg)	4.7577 (deg/s ²)
6	.4594 (deg)	.6974 (deg/s ²)

nondimensional wave exciting forces on ship_a (Heading = 225.0 (Deg.))

no.	Lamda/Lb	f1	f2	f3	f4	f5	f6
1	.20000	.00113	.00735	.00522	.00007	.00179	.00505
2	.60000	.00964	.03346	.01772	.00053	.00671	.00897
3	1.00000	.01690	.03755	.00644	.00060	.00610	.02257
4	1.40000	.01369	.07698	.06875	.00030	.00796	.01443
5	1.80000	.02622	.08835	.01454	.00030	.02428	.04493
6	2.20000	.05400	.22132	.10456	.00142	.04744	.05347
7	2.60000	.06803	.22205	.13615	.00143	.06227	.05479
8	3.00000	.07415	.22470	.18112	.00138	.06819	.05212
9	3.40000	.07569	.22247	.22346	.00130	.06976	.04729
10	3.80000	.07486	.21556	.26024	.00117	.06934	.04116
11	4.20000	.07307	.20694	.29196	.00104	.06811	.03475
12	4.60000	.07097	.19791	.31921	.00091	.06660	.02890
13	5.00000	.06882	.18886	.34262	.00081	.06501	.02393
14	5.40000	.06672	.17993	.36281	.00072	.06343	.01984
15	5.80000	.06469	.17126	.38038	.00065	.06188	.01652

phase angle (Deg.) of wave exciting forces on ship_a

no.	Lamda/Lb	pf1	pf2	pf3	pf4	pf5	pf6
1	.200	-23.265	-109.204	-10.819	-33.316	5.549	-109.305
2	.600	126.335	97.925	174.401	76.248	152.986	17.382
3	1.000	120.159	75.588	-52.754	-164.853	109.055	163.447
4	1.400	90.252	71.971	-160.377	105.200	136.922	21.286
5	1.800	-64.365	-179.321	-87.485	-87.879	-80.619	-12.977
6	2.200	-72.748	-98.406	60.066	-51.706	-80.903	-19.148
7	2.600	-76.163	-87.755	48.464	-47.153	-77.914	-23.924
8	3.000	-78.431	-87.362	37.391	-48.943	-76.385	-24.574
9	3.400	-80.230	-87.268	31.002	-49.856	-75.943	-23.166
10	3.800	-81.944	-87.329	26.688	-50.212	-76.100	-20.804
11	4.200	-83.613	-87.502	23.534	-51.014	-76.510	-18.705
12	4.600	-85.149	-87.617	21.115	-52.505	-76.947	-17.401
13	5.000	-86.488	-87.614	19.177	-54.513	-77.294	-16.944
14	5.400	-87.607	-87.512	17.564	-56.801	-77.505	-17.215
15	5.800	-88.517	-87.352	16.179	-59.192	-77.572	-18.080

Jul 27 1996 13:27

shipint.out

Page 15

nondimensional wave exciting forces on ship_b (Heading = 225.0 (Deg.))

no.	Lamda/Lb	f1	f2	f3	f4	f5	f6
1	.20000	.01272	.03984	.04988	.00227	.02991	.01314
2	.60000	.04649	.03756	.20047	.00258	.04388	.05245
3	1.00000	.03929	.23034	.09458	.00366	.06345	.06020
4	1.40000	.05094	.26792	.26965	.00364	.07360	.04437
5	1.80000	.04942	.43448	.61857	.00132	.09318	.00541
6	2.20000	.08265	.23694	1.01084	.00089	.09674	.02038
7	2.60000	.08902	.07053	.83679	.00062	.10836	.00943
8	3.00000	.08105	.03471	.77405	.00042	.10628	.00457
9	3.40000	.07007	.03565	.76146	.00037	.09749	.00297
10	3.80000	.05971	.04020	.76060	.00038	.08687	.00261
11	4.20000	.05131	.04267	.75832	.00039	.07690	.00270
12	4.60000	.04497	.04331	.75193	.00040	.06849	.00292
13	5.00000	.04028	.04280	.74225	.00040	.06174	.00314
14	5.40000	.03676	.04162	.73085	.00040	.05644	.00332
15	5.80000	.03406	.04008	.71906	.00039	.05228	.00344

phase angle (Deg.) of wave exciting forces on ship_b

no.	Lamda/Lb	pf1	pf2	pf3	pf4	pf5	pf6
1	.200	-52.428	-50.637	-47.457	33.343	-67.265	-24.916
2	.600	136.472	158.140	30.363	-157.633	115.891	-111.971
3	1.000	45.334	21.302	98.108	80.862	34.300	94.872
4	1.400	-15.113	-3.196	82.822	82.576	-7.038	86.166
5	1.800	-35.559	12.380	33.618	151.917	-20.509	63.932
6	2.200	-71.692	86.396	65.200	37.308	-39.085	64.876
7	2.600	-62.644	126.568	68.552	71.099	-37.792	95.651
8	3.000	-58.397	175.560	62.422	71.606	-32.620	108.341
9	3.400	-56.643	-147.118	56.866	67.657	-27.650	118.273
10	3.800	-57.106	-130.982	52.938	69.800	-23.962	129.528
11	4.200	-59.313	-122.873	50.130	75.166	-21.678	139.606
12	4.600	-62.567	-117.982	47.920	81.151	-20.549	147.184
13	5.000	-66.231	-114.683	45.983	86.726	-20.229	152.623
14	5.400	-69.885	-112.314	44.155	91.593	-20.409	156.526
15	5.800	-73.318	-110.556	42.366	95.735	-20.863	159.349

nondimensional transfer function: motion dispt. amplitudes on ship_a

Heading = 225.0 (Deg.)

no.	Lamda/Lb	y1/a	y2/a	y3/a	y4/ka	y5/ka	y6/ka
1	.200	.00007	.00045	.00013	.00002	.00001	.00005
2	.600	.00310	.01328	.00507	.00183	.00083	.00120
3	1.000	.01133	.01211	.00274	.00759	.00242	.01088
4	1.400	.01704	.09680	.08787	.01589	.01383	.01481
5	1.800	.03368	.03043	.03800	.01074	.09318	.05598
6	2.200	.04467	.06519	.43635	.03135	.37391	.11025
7	2.600	.05528	.12246	1.25678	.05093	.78461	.14508
8	3.000	.14223	.16439	1.28269	.06926	1.00685	.19319
9	3.400	.23771	.23621	1.06816	.08988	1.01144	.22724
10	3.800	.30268	.30397	.99663	.10508	.98687	.24363
11	4.200	.35324	.34971	.95551	.11747	.96656	.25714
12	4.600	.39003	.38104	.92904	.12849	.93877	.26938
13	5.000	.41331	.40418	.91928	.13860	.90201	.28003
14	5.400	.42570	.42260	.92351	.14807	.86060	.28897

Jul 27 1996 13:27

shipint.out

Page 16

15 5.800 .43069 .43806 .93612 .15710 .81931 .29630

phase angle(Deg.) of motions of ship_a:

Heading = 225.0 (Deg.)

no.	Lamda/Lb	pm1	pm2	pm3	pm4	pm5	pm6
1	.200	148.042	78.500	78.500	78.500	78.500	78.500
2	.600	-53.600	-80.247	24.842	-96.996	-19.827	-168.319
3	1.000	-53.353	-130.913	170.623	48.310	-46.569	-2.281
4	1.400	-101.581	-79.665	29.312	-44.943	-41.280	-112.666
5	1.800	151.118	-52.716	54.980	-106.066	120.688	-166.109
6	2.200	137.714	89.082	-110.739	-164.646	147.756	-170.741
7	2.600	79.178	96.442	-57.422	-169.435	-179.003	-175.064
8	3.000	56.714	87.694	-16.394	-178.241	-147.369	-179.197
9	3.400	66.433	81.086	-5.444	-179.650	-127.511	-176.171
10	3.800	73.965	83.136	-2.785	-179.179	-116.446	-175.361
11	4.200	79.796	85.829	-1.700	-178.822	-108.461	-175.789
12	4.600	84.967	87.625	-1.990	-178.343	-102.011	-176.339
13	5.000	89.399	88.657	-3.018	-177.634	-96.883	-176.771
14	5.400	92.941	89.208	-4.109	-176.688	-93.015	-177.087
15	5.800	95.586	89.487	-4.902	-175.533	-90.273	-177.336

nondimensional transfer function: motion dispt. amplitudes on ship_b

Heading = 225.0 (Deg.)

no.	Lamda/Lb	y1/a	y2/a	y3/a	y4/ka	y5/ka	y6/ka
1	.200	.00141	.00780	.00406	.00323	.00187	.00106
2	.600	.03908	.05488	.13432	.03647	.07248	.07106
3	1.000	.01646	.39363	.55851	.19449	.44958	.21954
4	1.400	.14173	.61973	.78047	.60403	.72753	.24153
5	1.800	.30915	.73312	1.12304	1.15743	.96546	.27277
6	2.200	.58704	.35306	1.48691	1.27863	1.43587	.08355
7	2.600	.68073	.32740	1.04571	2.26476	1.38768	.23379
8	3.000	.44533	.54223	.89242	1.68880	.82154	.42979
9	3.400	.07280	.48142	1.19344	1.32033	.11932	.44785
10	3.800	.19074	.48619	1.14679	1.09041	.34568	.42691
11	4.200	.33357	.50710	1.04768	.91222	.56851	.39869
12	4.600	.40659	.52785	.97382	.78470	.67317	.37070
13	5.000	.43652	.54640	.93560	.68937	.71033	.34471
14	5.400	.44066	.56141	.92668	.61391	.70934	.32128
15	5.800	.43089	.57251	.93594	.55174	.68853	.30046

phase angle(Deg.) of motions of ship_b:

Heading = 225.0 (Deg.)

no.	Lamda/Lb	pm1	pm2	pm3	pm4	pm5	pm6
1	.200	146.537	131.881	140.591	-141.575	107.383	158.498
2	.600	-12.672	-92.423	-114.287	69.655	-52.190	77.352
3	1.000	36.369	-145.477	22.096	-46.494	-77.784	-65.357
4	1.400	126.993	173.872	75.252	-66.826	-57.226	-85.997
5	1.800	112.137	-161.540	33.582	-21.186	-69.078	-75.023
6	2.200	120.427	-126.248	44.838	75.147	-56.284	-46.618
7	2.600	153.760	95.465	60.256	-83.409	-22.629	130.084
8	3.000	-173.037	128.614	23.530	9.029	9.394	175.806
9	3.400	-154.728	130.565	27.053	34.485	16.698	-167.132
10	3.800	67.100	124.082	32.174	52.300	-104.472	-159.387
11	4.200	76.841	119.803	31.809	63.439	-95.283	-155.878

Jul 27 1996 13:27

shipint.out

Page 17

12	4.600	84.673	116.859	28.455	70.976	-86.964	-154.452
13	5.000	90.242	114.836	23.946	76.639	-80.494	-154.214
14	5.400	93.780	113.462	19.583	81.185	-75.722	-154.695
15	5.800	95.522	112.483	16.023	84.972	-72.429	-155.574

RMS displacements and accelerations of ship-a
(Heading= 225.0 (Deg.) average period T1=8.123 (sec))

motion_mode j	Dj	Aj
1	.1711 (m)	.0076 (g)
2	.1774 (m)	.0094 (g)
3	.7284 (m)	.0432 (g)
4	.1209 (deg)	.1026 (deg/s^2)
5	1.3026 (deg)	.7922 (deg/s^2)
6	.3065 (deg)	.2420 (deg/s^2)

RMS displacements and accelerations of ship-b
(Heading= 225.0 (Deg.) average period T1=8.123 (sec))

motion_mode j	Dj	Aj
1	.3471 (m)	.0278 (g)
2	.4495 (m)	.0538 (g)
3	.9522 (m)	.0892 (g)
4	3.1211 (deg)	3.4520 (deg/s^2)
5	2.6482 (deg)	5.8255 (deg/s^2)
6	.8263 (deg)	1.8438 (deg/s^2)

nondimensional wave exciting forces on ship_a (Heading = 270.0 (Deg.))

no.	Lamda/Lb	f1	f2	f3	f4	f5	f6
1	.20000	.00473	.02732	.01310	.00016	.00196	.00536
2	.60000	.00561	.17681	.09982	.00056	.00819	.03014
3	1.00000	.01119	.34433	.15167	.00172	.00618	.03014
4	1.40000	.01323	.53587	.29479	.00207	.00535	.03320
5	1.80000	.01519	.52728	.32836	.00196	.00169	.03305
6	2.20000	.01506	.48980	.34660	.00176	.00273	.02803
7	2.60000	.01430	.44354	.35546	.00151	.00512	.02279
8	3.00000	.01347	.40453	.36313	.00129	.00712	.01905
9	3.40000	.01265	.37173	.37189	.00112	.00875	.01665
10	3.80000	.01185	.34294	.38179	.00099	.01007	.01511
11	4.20000	.01112	.31720	.39236	.00088	.01113	.01404
12	4.60000	.01045	.29414	.40316	.00079	.01199	.01323
13	5.00000	.00985	.27352	.41388	.00072	.01270	.01258
14	5.40000	.00932	.25513	.42432	.00066	.01329	.01204
15	5.80000	.00884	.23874	.43437	.00060	.01378	.01156

phase angle (Deg.) of wave exciting forces on ship_a

no.	Lamda/Lb	pf1	pf2	pf3	pf4	pf5	pf6
1	.200	-6.992	177.946	-39.606	26.971	-1.421	48.626
2	.600	-159.845	-79.308	105.308	-124.662	87.319	-156.907
3	1.000	-169.392	-117.305	61.061	-139.628	74.836	-171.544
4	1.400	-163.699	-108.441	61.667	-121.180	94.678	-173.566
5	1.800	-153.467	-104.410	57.251	-121.228	66.743	-161.836
6	2.200	-142.916	-100.530	52.024	-116.583	-20.208	-152.273
7	2.600	-135.251	-98.491	46.602	-113.568	-30.107	-148.370

Jul 27 1996 13:27

shipint.out

Page 18

8	3.000	-129.232	-97.299	41.289	-112.276	-30.852	-148.622
9	3.400	-124.226	-96.226	36.463	-111.852	-29.725	-150.667
10	3.800	-120.029	-95.159	32.255	-111.840	-28.133	-152.996
11	4.200	-116.513	-94.153	28.654	-112.059	-26.534	-155.035
12	4.600	-113.560	-93.257	25.591	-112.434	-25.078	-156.689
13	5.000	-111.066	-92.491	22.983	-112.928	-23.799	-158.016
14	5.400	-108.944	-91.851	20.752	-113.513	-22.689	-159.096
15	5.800	-107.126	-91.324	18.832	-114.167	-21.727	-159.994

nondimensional wave exciting forces on ship_b (Heading = 270.0 (Deg.))

no.	Lamda/Lb	f1	f2	f3	f4	f5	f6
1	.20000	.03565	.13360	.13982	.00043	.04343	.02596
2	.60000	.02715	.29324	.38371	.00059	.00271	.02194
3	1.00000	.01695	.50287	.25367	.00336	.00587	.03110
4	1.40000	.03138	.44536	.64670	.00321	.01540	.03242
5	1.80000	.03285	.21278	.81434	.00164	.03256	.01604
6	2.20000	.03043	.09703	.93150	.00071	.03731	.00697
7	2.60000	.02821	.03963	.98024	.00033	.03826	.00240
8	3.00000	.02584	.03238	.97956	.00041	.03793	.00281
9	3.40000	.02356	.04161	.95408	.00053	.03693	.00422
10	3.80000	.02153	.04776	.91843	.00061	.03563	.00514
11	4.20000	.01978	.05041	.88058	.00064	.03427	.00568
12	4.60000	.01830	.05085	.84468	.00066	.03301	.00597
13	5.00000	.01706	.05004	.81260	.00066	.03189	.00610
14	5.40000	.01601	.04856	.78493	.00065	.03096	.00614
15	5.80000	.01513	.04677	.76161	.00063	.03019	.00611

phase angle (Deg.) of wave exciting forces on ship_b

no.	Lamda/Lb	pf1	pf2	pf3	pf4	pf5	pf6
1	.200	76.970	147.015	-29.297	-16.056	77.470	40.294
2	.600	166.700	-169.455	2.235	87.575	-47.734	118.753
3	1.000	69.941	58.395	-93.630	-71.118	92.677	-4.574
4	1.400	-76.077	72.838	104.457	-67.795	23.520	2.120
5	1.800	-67.812	64.378	94.501	-77.227	40.329	-4.599
6	2.200	-73.486	54.455	84.890	-92.281	45.904	-14.562
7	2.600	-77.851	22.676	79.733	-143.237	46.655	-57.345
8	3.000	-81.018	-35.138	76.119	166.723	46.103	-130.762
9	3.400	-83.817	-60.216	73.009	151.472	45.085	-150.118
10	3.800	-86.532	-69.330	70.036	145.764	43.690	-156.989
11	4.200	-89.236	-73.769	67.069	143.041	41.962	-160.635
12	4.600	-91.932	-76.449	64.082	141.521	39.977	-163.053
13	5.000	-94.604	-78.332	61.093	140.563	37.830	-164.895
14	5.400	-97.229	-79.801	58.138	139.895	35.607	-166.427
15	5.800	-99.786	-81.031	55.256	139.392	33.379	-167.769

nondimensional transfer function: motion dispt. amplitudes on ship_a

Heading = 270.0 (Deg.)

no.	Lamda/Lb	y1/a	y2/a	y3/a	y4/ka	y5/ka	y6/ka
1	.200	.00126	.00721	.00149	.00014	.00006	.00018
2	.600	.00646	.18714	.07954	.00728	.00512	.00605
3	1.000	.02464	.36525	.29674	.01908	.00815	.01250
4	1.400	.06100	.47790	.94009	.02986	.04112	.01486
5	1.800	.10322	.57021	1.39690	.03706	.12619	.00900
6	2.200	.10364	.67204	1.40534	.03635	.11644	.00763

Jul 27 1996 13:27

shipint.out

Page 19

7	2.600	.09921	.71231	1.24594	.03419	.11378	.01182
8	3.000	.10769	.73870	1.14350	.02951	.12848	.01229
9	3.400	.11769	.76136	1.09650	.02338	.14062	.01183
10	3.800	.12513	.78103	1.07774	.01821	.14746	.01108
11	4.200	.12964	.79786	1.07091	.01871	.15009	.01023
12	4.600	.13193	.81210	1.06828	.02685	.15001	.00948
13	5.000	.13276	.82407	1.06672	.03954	.14841	.00902
14	5.400	.13270	.83413	1.06517	.05475	.14603	.00906
15	5.800	.13217	.84258	1.06340	.07177	.14334	.00978

phase angle(Deg.) of motions of ship_a:

Heading = 270.0 (Deg.)

no.	Lamda/Lb	pm1	pm2	pm3	pm4	pm5	pm6
1	.200	173.128	2.978	137.517	-147.288	-147.288	-122.958
2	.600	24.408	116.113	-74.634	99.722	-85.063	35.817
3	1.000	49.170	109.311	-92.723	107.353	-95.793	59.649
4	1.400	75.682	99.710	-79.078	98.782	-108.602	85.413
5	1.800	121.036	91.821	-42.303	99.078	-52.790	129.085
6	2.200	156.858	91.418	-20.237	101.521	-10.058	67.959
7	2.600	168.996	92.061	-9.758	104.756	-2.036	92.155
8	3.000	177.248	91.657	-6.749	112.004	7.015	109.905
9	3.400	-173.700	91.133	-5.979	125.316	17.729	121.259
10	3.800	-164.957	90.714	-5.640	151.263	27.791	127.781
11	4.200	-157.264	90.418	-5.264	-169.892	36.489	129.896
12	4.600	-150.805	90.221	-4.811	-141.147	43.769	127.624
13	5.000	-145.504	90.091	-4.332	-126.418	49.789	121.109
14	5.400	-141.202	90.008	-3.870	-118.491	54.756	111.335
15	5.800	-137.732	89.954	-3.448	-113.714	58.865	100.433

nondimensional transfer function: motion dispt. amplitudes on ship_b

Heading = 270.0 (Deg.)

no.	Lamda/Lb	y1/a	y2/a	y3/a	y4/ka	y5/ka	y6/ka
1	.200	.02032	.10214	.06736	.00203	.01448	.00693
2	.600	.11401	.23797	1.61743	.12113	.13503	.03370
3	1.000	.02184	1.19967	.82261	.78881	.03304	.06334
4	1.400	.14394	.54901	1.63464	1.30923	.26501	.04047
5	1.800	.36731	.37175	1.69910	1.74809	.55441	.12450
6	2.200	.34295	.81283	1.31160	2.09657	.40493	.12923
7	2.600	.23498	.92740	.91479	1.64106	.22166	.10061
8	3.000	.15935	.94650	.81989	1.32643	.13714	.08129
9	3.400	.09942	.95528	.83075	1.13738	.11075	.06894
10	3.800	.04786	.96154	.86959	1.01148	.11466	.06078
11	4.200	.00602	.96526	.91089	.91908	.12738	.05556
12	4.600	.03732	.96688	.94633	.84652	.13999	.05278
13	5.000	.07142	.96710	.97425	.78682	.15042	.05232
14	5.400	.10151	.96648	.99542	.73600	.15868	.05432
15	5.800	.12828	.96537	1.01121	.69153	.16520	.05894

phase angle(Deg.) of motions of ship_b:

Heading = 270.0 (Deg.)

no.	Lamda/Lb	pm1	pm2	pm3	pm4	pm5	pm6
1	.200	-76.262	-25.616	148.438	80.811	-82.551	-131.582
2	.600	82.826	-10.439	-75.991	102.347	-77.676	28.236
3	1.000	-53.690	-62.930	109.238	122.072	135.482	-60.404

Jul 27 1996 13:27

shipint.out

Page 20

4	1.400	-108.918	-76.827	100.108	154.890	88.299	-97.750
5	1.800	-24.891	156.046	98.030	59.318	157.486	-140.084
6	2.200	44.736	146.509	101.796	112.723	-137.615	-100.406
7	2.600	79.741	146.066	86.053	129.434	-95.688	-87.701
8	3.000	99.536	141.775	66.176	131.963	-56.766	-84.752
9	3.400	114.258	137.061	51.804	130.889	-15.272	-84.011
10	3.800	128.139	132.954	42.329	129.078	17.984	-83.115
11	4.200	-163.754	129.501	36.058	127.278	40.006	-80.988
12	4.600	-52.213	126.574	31.751	125.683	54.696	-77.086
13	5.000	-42.919	124.058	28.636	124.345	65.068	-71.394
14	5.400	-37.404	121.874	26.261	123.273	72.755	-64.455
15	5.800	-33.344	119.961	24.363	122.461	78.659	-57.134

RMS displacements and accelerations of ship-a
(Heading= 270.0(Deg.) average period T1=8.123(sec)

motion_mode j	Dj	Aj
1	.0911(m)	.0043(g)
2	.5951(m)	.0306(g)
3	1.0066(m)	.0539(g)
4	.0914(deg)	.0780(deg/s^2)
5	.2700(deg)	.1505(deg/s^2)
6	.0400(deg)	.0445(deg/s^2)

RMS displacements and accelerations of ship-b
(Heading= 270.0(Deg.) average period T1=8.123(sec)

motion_mode j	Dj	Aj
1	.1907(m)	.0135(g)
2	.7718(m)	.0537(g)
3	1.0922(m)	.1145(g)
4	4.3148(deg)	4.2142(deg/s^2)
5	1.0329(deg)	1.6477(deg/s^2)
6	.2771(deg)	.2651(deg/s^2)

nondimensional wave exciting forces on ship_a (Heading = 315.0 (Deg.)

no.	Lamda/Lb	f1	f2	f3	f4	f5	f6
1	.20000	.00181	.00199	.00347	.00006	.00148	.00190
2	.60000	.00678	.01910	.02050	.00022	.00526	.00664
3	1.00000	.01558	.04716	.05639	.00082	.02113	.02330
4	1.40000	.03167	.09041	.11506	.00028	.03044	.00338
5	1.80000	.02037	.02895	.13734	.00053	.02550	.03218
6	2.20000	.02744	.04942	.13021	.00080	.03191	.04263
7	2.60000	.03973	.09053	.13372	.00086	.04166	.04367
8	3.00000	.04812	.11448	.15679	.00083	.04895	.04116
9	3.40000	.05295	.12671	.18962	.00076	.05351	.03764
10	3.80000	.05533	.13178	.22408	.00070	.05600	.03407
11	4.20000	.05613	.13262	.25674	.00063	.05708	.03079
12	4.60000	.05593	.13101	.28655	.00058	.05720	.02791
13	5.00000	.05510	.12801	.31337	.00053	.05670	.02540
14	5.40000	.05390	.12427	.33740	.00048	.05581	.02323
15	5.80000	.05247	.12019	.35895	.00045	.05467	.02136

phase angle (Deg.) of wave exciting forces on ship_a

no.	Lamda/Lb	pf1	pf2	pf3	pf4	pf5	pf6
-----	----------	-----	-----	-----	-----	-----	-----

Jul 27 1996 13:27

shipint.out

Page 21

1	.200	96.893	95.702	125.180	106.683	76.157	107.166
2	.600	-99.460	24.599	-160.191	99.757	-131.208	114.567
3	1.000	-31.281	97.219	-70.105	-31.948	-28.079	-16.290
4	1.400	-102.944	69.070	-159.986	12.323	-108.024	160.826
5	1.800	-159.556	36.837	162.900	146.038	-167.875	169.055
6	2.200	139.016	-75.572	130.235	160.134	143.247	171.952
7	2.600	117.731	-85.978	97.294	166.924	120.137	173.872
8	3.000	108.727	-88.159	71.494	171.550	108.224	175.238
9	3.400	103.802	-88.794	54.595	175.078	100.967	176.272
10	3.800	100.721	-88.956	43.635	177.926	96.017	177.095
11	4.200	98.639	-88.949	36.156	-179.694	92.365	177.777
12	4.600	97.160	-88.883	30.769	-177.657	89.508	178.362
13	5.000	96.070	-88.800	26.711	-175.884	87.168	178.874
14	5.400	95.244	-88.719	23.544	-174.322	85.180	179.330
15	5.800	94.602	-88.645	21.003	-172.933	83.438	179.743

nondimensional wave exciting forces on ship_b (Heading = 315.0 (Deg.))

no.	Lamda/Lb	f1	f2	f3	f4	f5	f6
1	.20000	.00575	.00329	.01525	.00097	.00610	.00154
2	.60000	.01020	.03119	.15074	.00237	.01537	.02086
3	1.00000	.04372	.09354	.25298	.00263	.07981	.02645
4	1.40000	.05775	.08536	.43491	.00198	.09885	.01876
5	1.80000	.05603	.06882	.53126	.00149	.09286	.01356
6	2.20000	.04849	.05696	.59173	.00122	.07928	.01085
7	2.60000	.04066	.05059	.62594	.00106	.06724	.00943
8	3.00000	.03425	.04689	.64123	.00097	.05855	.00857
9	3.40000	.02936	.04413	.64549	.00090	.05257	.00796
10	3.80000	.02571	.04170	.64435	.00084	.04836	.00747
11	4.20000	.02295	.03943	.64115	.00079	.04528	.00706
12	4.60000	.02083	.03729	.63767	.00074	.04289	.00670
13	5.00000	.01917	.03529	.63471	.00070	.04097	.00639
14	5.40000	.01784	.03343	.63261	.00066	.03938	.00611
15	5.80000	.01675	.03171	.63143	.00063	.03804	.00586

phase angle (Deg.) of wave exciting forces on ship_b

no.	Lamda/Lb	pf1	pf2	pf3	pf4	pf5	pf6
1	.200	-142.262	100.592	155.391	-153.247	-151.691	-169.964
2	.600	179.056	139.043	64.316	94.631	100.325	33.646
3	1.000	-112.843	39.298	-131.556	-54.322	-108.815	-48.557
4	1.400	-147.708	-.212	154.990	-108.282	-157.503	-86.235
5	1.800	-163.871	-22.759	121.236	-141.234	177.959	-111.235
6	2.200	-172.596	-41.203	101.192	-164.846	161.074	-130.382
7	2.600	-178.996	-55.718	88.294	178.219	146.671	-144.378
8	3.000	175.528	-66.048	79.077	166.349	133.876	-154.226
9	3.400	170.662	-73.194	71.868	158.010	122.700	-161.195
10	3.800	166.385	-78.239	65.879	152.030	113.108	-166.271
11	4.200	162.719	-81.940	60.718	147.625	104.914	-170.104
12	4.600	159.661	-84.764	56.180	144.293	97.873	-173.099
13	5.000	157.173	-86.997	52.146	141.715	91.754	-175.512
14	5.400	155.198	-88.816	48.537	139.680	86.365	-177.506
15	5.800	153.669	-90.335	45.295	138.048	81.559	-179.191

nondimensional transfer function: motion dispt. amplitudes on ship_a

Heading = 315.0 (Deg.)

Jul 27 1996 13:27

shipint.out

Page 22

no.	Lamda/Lb	y1/a	y2/a	y3/a	y4/ka	y5/ka	y6/ka
1	.200	.04945	.03544	.00471	.00807	.00040	.00440
2	.600	.02417	.03627	.08231	.00563	.00813	.00611
3	1.000	.08947	.03679	.05492	.03942	.07037	.02446
4	1.400	.19131	.08799	.20051	.02614	.14453	.02593
5	1.800	.20876	.03794	.22944	.03268	.17181	.12174
6	2.200	.31442	.14901	.24638	.08653	.24461	.20258
7	2.600	.44241	.25826	.32903	.12975	.33692	.26167
8	3.000	.55098	.34582	.43033	.16419	.41970	.30380
9	3.400	.63521	.41388	.52172	.19268	.48691	.33406
10	3.800	.69883	.46657	.59760	.21738	.53992	.35614
11	4.200	.74662	.50757	.65921	.23982	.58156	.37255
12	4.600	.78254	.53975	.70913	.26104	.61443	.38497
13	5.000	.80965	.56522	.74981	.28177	.64060	.39452
14	5.400	.83018	.58558	.78325	.30249	.66165	.40198
15	5.800	.84573	.60197	.81099	.32359	.67874	.40790

phase angle(Deg.) of motions of ship_a:

Heading = 315.0 (Deg.)

no.	Lamda/Lb	pm1	pm2	pm3	pm4	pm5	pm6
1	.200	-85.336	-109.209	136.766	-44.038	69.306	-61.013
2	.600	61.186	-67.512	-162.149	-55.026	-153.739	-68.132
3	1.000	94.350	-64.554	-174.452	143.205	-72.234	168.761
4	1.400	30.030	-97.559	113.502	140.184	-148.458	-11.861
5	1.800	-24.037	158.777	88.761	-17.480	161.572	-8.056
6	2.200	-60.717	106.375	52.918	-23.317	126.730	-6.549
7	2.600	-75.679	98.864	27.372	-25.282	110.537	-5.607
8	3.000	-82.430	95.762	15.238	-27.127	102.802	-4.932
9	3.400	-85.971	94.066	9.303	-29.133	98.645	-4.398
10	3.800	-88.052	93.013	6.069	-31.295	96.178	-3.941
11	4.200	-89.387	92.308	4.137	-33.565	94.595	-3.526
12	4.600	-90.308	91.809	2.899	-35.893	93.517	-3.130
13	5.000	-90.982	91.442	2.062	-38.239	92.744	-2.741
14	5.400	-91.503	91.161	1.472	-40.567	92.167	-2.350
15	5.800	-91.924	90.941	1.042	-42.853	91.720	-1.952

nondimensional transfer function: motion dispt. amplitudes on ship_b

Heading = 315.0 (Deg.)

no.	Lamda/Lb	y1/a	y2/a	y3/a	y4/ka	y5/ka	y6/ka
1	.200	.45992	.22591	.01777	.03692	.00306	.04979
2	.600	.23060	.21944	.40060	.70229	.07104	.18789
3	1.000	.99837	.50486	.51333	.74227	.42468	.29463
4	1.400	1.43117	.54422	1.01047	.62288	.72334	.27606
5	1.800	1.37827	.52308	1.09299	.51538	.77345	.25426
6	2.200	1.22452	.56936	1.03958	.50679	.73709	.25777
7	2.600	1.10884	.63426	.99062	.52466	.70393	.26993
8	3.000	1.04198	.68836	.96619	.53708	.69056	.28189
9	3.400	1.00720	.72751	.95862	.54007	.69144	.29198
10	3.800	.98988	.75440	.95973	.53583	.69942	.30071
11	4.200	.98137	.77237	.96466	.52680	.70997	.30879
12	4.600	.97714	.78403	.97097	.51479	.72082	.31687
13	5.000	.97498	.79124	.97752	.50098	.73098	.32539
14	5.400	.97381	.79532	.98380	.48613	.74009	.33464
15	5.800	.97311	.79716	.98960	.47075	.74808	.34482

phase angle(Deg.) of motions of ship_b:

Jul 27 1996 13:27

shipint.out

Page 23

Heading = 315.0 (Deg.)

no.	Lamda/Lb	pm1	pm2	pm3	pm4	pm5	pm6
1	.200	36.449	-89.405	145.581	-149.285	-150.677	7.381
2	.600	-51.281	-21.858	26.039	93.287	111.688	-149.775
3	1.000	52.304	-124.741	151.672	-46.571	-119.960	130.658
4	1.400	14.709	-155.728	99.246	-102.062	-162.167	98.394
5	1.800	-.617	174.025	82.575	-143.710	179.928	71.249
6	2.200	-12.303	150.882	70.007	-173.976	166.121	51.029
7	2.600	-22.683	137.040	59.049	167.562	153.885	37.953
8	3.000	-31.391	128.704	49.962	156.137	143.592	29.456
9	3.400	-38.210	123.262	42.749	148.577	135.428	23.640
10	3.800	-43.340	119.430	37.095	143.285	129.125	19.461
11	4.200	-47.135	116.569	32.635	139.445	124.267	16.346
12	4.600	-49.928	114.340	29.066	136.604	120.482	13.968
13	5.000	-51.978	112.545	26.161	134.492	117.483	12.122
14	5.400	-53.477	111.065	23.761	132.940	115.067	10.675
15	5.800	-54.562	109.822	21.747	131.836	113.088	9.531

RMS displacements and accelerations of ship-a
 (Heading= 315.0 (Deg.) average period T1=8.123 (sec))

motion_mode j	Dj	Aj
1	.4359 (m)	.0095 (g)
2	.2801 (m)	.0058 (g)
3	.3743 (m)	.0082 (g)
4	.2798 (deg)	.0696 (deg/s ²)
5	.7371 (deg)	.1892 (deg/s ²)
6	.4983 (deg)	.1221 (deg/s ²)

RMS displacements and accelerations of ship-b
 (Heading= 315.0 (Deg.) average period T1=8.123 (sec))

motion_mode j	Dj	Aj
1	1.0133 (m)	.0304 (g)
2	.5686 (m)	.0151 (g)
3	.8569 (m)	.0240 (g)
4	2.7791 (deg)	1.0932 (deg/s ²)
5	2.0468 (deg)	.6763 (deg/s ²)
6	.9996 (deg)	.3742 (deg/s ²)

UNCLASSIFIED
SECURITY CLASSIFICATION OF FORM
(highest classification of Title, Abstract, Keywords)

DOCUMENT CONTROL DATA		
(Security classification of title, body of abstract and indexing annotation must be entered when the overall document is classified)		
<p>1. ORIGINATOR (the name and address of the organization preparing the document. Organizations for whom the document was prepared, e.g. Establishment sponsoring a contractor's report, or tasking agency, are entered in section 8.)</p> <p style="text-align: center;">Centre for Marine Vessel Design and Research, Technical University of Nova Scotia</p>	<p>2. SECURITY CLASSIFICATION (overall security classification of the document including special warning terms if applicable).</p> <p style="text-align: center;">Unclassified</p>	
<p>3. TITLE (the complete document title as indicated on the title page. Its classification should be indicated by the appropriate abbreviation (S,C,R or U) in parentheses after the title).</p> <p style="text-align: center;">User's Guide for SHIPINT - A Computer Program to Compute Two Ship Interaction in Waves</p>		
<p>4. AUTHORS (Last name, first name, middle initial. If military, show rank, e.g. Doe, Maj. John E.)</p> <p style="text-align: center;">Hsiung, C.C. and He, Y.J.</p>		
<p>5. DATE OF PUBLICATION (month and year of publication of document)</p> <p style="text-align: center;">August 1996</p>	<p>6a. NO OF PAGES (total containing information. Include Annexes, Appendices, etc.).</p> <p style="text-align: center;">79</p>	<p>6b. NO. OF REFS (total cited in document)</p> <p style="text-align: center;">5</p>
<p>7. DESCRIPTIVE NOTES (the category of the document, e.g. technical report, technical note or memorandum. If appropriate, enter the type of report, e.g. interim, progress, summary, annual or final. Give the inclusive dates when a specific reporting period is covered).</p> <p style="text-align: center;">Contractor Report</p>		
<p>8. SPONSORING ACTIVITY (the name of the department project office or laboratory sponsoring the research and development. Include the address).</p> <p style="text-align: center;">Defence Research Establishment Atlantic, P.O. Box 1012, Dartmouth, Nova Scotia, B2Y 3Z7</p>		
<p>9a. PROJECT OR GRANT NO. (if appropriate, the applicable research and development project or grant number under which the document was written. Please specify whether project or grant).</p> <p style="text-align: center;">1.g.b</p>	<p>9b. CONTRACT NO. (if appropriate, the applicable number under which the document was written).</p> <p style="text-align: center;">W7707-5-3254/01-HAL</p>	
<p>10a. ORIGINATOR'S DOCUMENT NUMBER (the official document number by which the document is identified by the originating activity. This number must be unique to this document).</p> <p style="text-align: center;">Technical Report CMVDR-96-4</p>	<p>10b. OTHER DOCUMENT NOS. (Any other numbers which may be assigned this document either by the originator or by the sponsor).</p> <p style="text-align: center;">DREA CR/96/445</p>	
<p>11. DOCUMENT AVAILABILITY (any limitations on further dissemination of the document, other than those imposed by security classification)</p> <p><input checked="" type="checkbox"/> Unlimited distribution</p> <p><input type="checkbox"/> Distribution limited to defence departments and defence contractors; further distribution only as approved</p> <p><input type="checkbox"/> Distribution limited to defence departments and Canadian defence contractors; further distribution only as approved</p> <p><input type="checkbox"/> Distribution limited to government departments and agencies; further distribution only as approved</p> <p><input type="checkbox"/> Distribution limited to defence departments; further distribution only as approved</p> <p><input type="checkbox"/> Other (please specify):</p>		
<p>12. DOCUMENT ANNOUNCEMENT (any limitation to the bibliographic announcement of this document. This will normally correspond to the Document Availability (11). However, where further distribution (beyond the audience specified in 11) is possible, a wider announcement audience may be selected).</p>		

UNCLASSIFIED
SECURITY CLASSIFICATION OF FORM

DCD03 2/06/87-M

UNCLASSIFIED
SECURITY CLASSIFICATION OF FORM

13. **ABSTRACT** (a brief and factual summary of the document. It may also appear elsewhere in the body of the document itself. It is highly desirable that the abstract of classified documents be unclassified. Each paragraph of the abstract shall begin with an indication of the security classification of the information in the paragraph (unless the document itself is unclassified) represented as (S), (C), (R), or (U). It is not necessary to include here abstracts in both official languages unless the text is bilingual).

The computer program SHIPINT was developed for the coupled motion computations of two adjacent ships advancing on a parallel course in regular or irregular waves. The code is written in Fortran 77 ANSI.

The coupled motion computations use the three-dimensional panel method, and the zero-speed Green function with a simple forward speed correction. With this method, the field points and source points are all distributed on the wetted surfaces of two ships (ship-a and ship-b). The hydrodynamic forces, wave exciting forces and motions are computed based on two ship interaction. The double body flow model is applied to obtain the steady flow disturbance potential and velocity distributions on the wetted surface on ship-a and ship-b by the Hess-Smith method. The m-terms are computed by the integral equation method based on double body flow of two ship interaction. The approximate m-terms can also be used in this program. Schmitke's method is used to compute the viscous roll damping coefficients for ship-a on its own, and ship-b on its own; therefore, the viscous interaction effect is not considered. The spectral analyses are carried out for ship-a and ship-b.

Input and output files, and examples are also presented and described in detail in this guide.

14. **KEYWORDS, DESCRIPTORS or IDENTIFIERS** (technically meaningful terms or short phrases that characterize a document and could be helpful in cataloguing the document. They should be selected so that no security classification is required. Identifiers, such as equipment model designation, trade name, military project code name, geographic location may also be included. If possible keywords should be selected from a published thesaurus. e.g. Thesaurus of Engineering and Scientific Terms (TEST) and that thesaurus-identified. If it not possible to select indexing terms which are Unclassified, the classification of each should be indicated as with the title).

seakeeping
ship motions
ship interaction
panel methods
frequency domain

500693