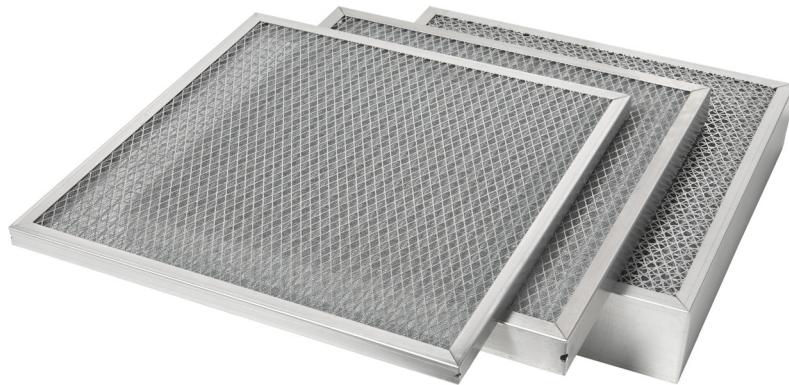


HI SERIES

INDUSTRIAL GRADE FILTER



FILTERS LARGE AIRBORNE PARTICULATE AND COOLANT MIST



Application: The **HI Series Industrial Grade Filter** is an impingement type panel filter designed for use in residential, commercial and industrial HVAC applications to remove large airborne particulate and coolant mist from the airstream. Popular applications include outside air intake ducts, rooftop economizer hoods and air handling units. It is an ideal solution for any HVAC system that desires a washable and durable pre-filter with low resistance to airflow.

Construction: The HI Series uses a metal frame to enclose the media pack consisting of multiple layers of corrugated screen wire assembled in a criss-cross fashion for strength. The pack is then placed between two layers of expanded metal and is made to fit firmly inside the frame giving the HI Series filter its exceptional strength and durability. The frame is made with mitered corners and is secured with pop-rivet(s). The frame has drain holes in three corners.

Filter Cleaning and Coating

1. To clean a dirty filter, rinse it with a moderate-to-heavy stream of warm water. High-powered steam cleaning or chemical dips are unnecessary and not recommended.
2. The HI Series filter is not supplied from the factory with filter adhesive coating. If desired, it may be sprayed before installation with Filter Coat, a water soluble adhesive and detergent.

Due to continuing research and development, we reserve the right to make modifications to any product.

AVAILABLE IN THREE ALLOYS

HIA

Aluminum

HIG

Galvanized Steel

HIS

Stainless Steel

PRODUCT HIGHLIGHTS

- Ridgid, Multi-Layered Construction
- Low Resistance to Airflow
- Washable and Reusable
- Corner Drain Holes

FAST FACTS

MINIMUM ORDER:
No Minimum Order

SIZING OPTIONS:
Standard and Special Sizes Available
(See reverse side for details.)

CLASSIFICATION:
UL Classified 900

MAX TEMP:
HIA – 275 Degrees F
HIG – 325 Degrees F
HIS – 900 Degrees F

HI SERIES ~ Filter Selection Chart

MODEL	HIA			HIG			HIS		
CONSTRUCTION									
Frame Alloy	.030" thick aluminum			22 gauge galvanized steel			24 gauge stainless steel		
Frame Thickness	1/2" exact; nominal* 1" and 2"			Nominal* 1" and 2"			Nominal* 1" and 2"		
Face Grids	28 gauge galvanized steel			28 gauge galvanized steel			28 gauge stainless steel		
Media	Aluminum screen wire			Aluminum screen wire			Stainless steel screen wire		
APPLICATION									
Application	Airborne particulate and coolant mist			Airborne particulate and coolant mist			Airborne particulate and coolant mist		
Max Operating Temperature	275°			325°			900°		
Washability	Frequent and moderate			Frequent and rigorous			Frequent and rigorous		
STANDARD SIZES									
Nominal* Dimensions (H x W x T)	Part Number	Carton Quantity	Carton Weight	Part Number	Carton Quantity	Carton Weight	Part Number	Carton Quantity	Carton Weight
12 x 24 x 1	HIA101224	12	18.0	HIG101224	12	25.0	HIS101224	12	37.0
16 x 20 x 1	HIA101620	12	20.0	HIG101620	12	29.0	HIS101620	12	39.0
16 x 25 x 1	HIA101625	12	24.0	HIG101625	12	34.0	HIS101625	12	46.0
20 x 20 x 1	HIA102020	12	24.0	HIG102020	12	34.0	HIS102020	12	46.0
20 x 25 x 1	HIA102025	12	29.0	HIG102025	12	41.0	HIS102025	12	55.0
24 x 24 x 1	HIA102424	12	33.0	HIG102424	12	44.0	HIS102424	12	62.0
12 x 24 x 2	HIA201224	12	25.0	HIG201224	12	38.0	HIS201224	12	53.0
16 x 20 x 2	HIA201620	6	14.0	HIG201620	6	18.0	HIS201620	6	29.0
16 x 25 x 2	HIA201625	6	17.0	HIG201625	6	22.0	HIS201625	6	35.0
20 x 20 x 2	HIA202020	6	17.0	HIG202020	6	22.0	HIS202020	6	35.0
20 x 25 x 2	HIA202025	6	21.0	HIG202025	6	27.0	HIS202025	6	41.0
24 x 24 x 2	HIA202424	6	23.0	HIG202424	6	30.0	HIS202424	6	46.0

HI SERIES NOTES

SIZING INFORMATION

* What does Nominal mean? Standard size filters are of a nominal dimension. This means the height and width dimensions are undercut by a certain amount. See below for the exact amount of undercut for each dimension.

** Filter Thickness: 1/2" is exact, nominal 1" (actual 7/8"), nominal 2" (actual 1-3/4") and nominal 4" (actual 3-3/4").

1. **Standard** nominal filters are 1/2" undercut on the height and width dimensions.
2. **Special** size filters are made to the exact height and width dimensions provided.
3. **Standard and Special** size filters are available in thicknesses of 1/2" exact (HIA only), nominal 1" (7/8" actual), nominal 2" (Actual 1-3/4") and nominal 4" (3-3/4").
4. Tolerance height and width: ± 1/8"

CLASSIFICATION AND TEST NOTES

1. UL Classified 900
2. Rated Airflow: 350 fpm
3. Recommended Airflow Range: 300 – 500 fpm.
4. Dust Holding Capacity:
 - a. 1" thick: 68 grams per square foot
 - b. 2" thick: 97 grams per square foot
5. Average Arrestance:
 - a. 1" thick: 43% at rated airflow
 - b. 2" thick: 53% at rated airflow
6. Recommended final resistance is .50" W.G.
7. Independent test report available for performance details

INSTALLATION CONSIDERATIONS

1. The HI Series filter may be installed in HVAC systems vertically or horizontally.

ADDITIONAL INFORMATION

1. The 1/2" exact filter uses an .025" thick aluminum frame.
2. The 1/2" exact filter is 4-ply.
3. The nominal 1" (actual 7/8") filter is 5-ply.
4. The nominal 2" (actual 1-3/4") filter is 7-ply.

