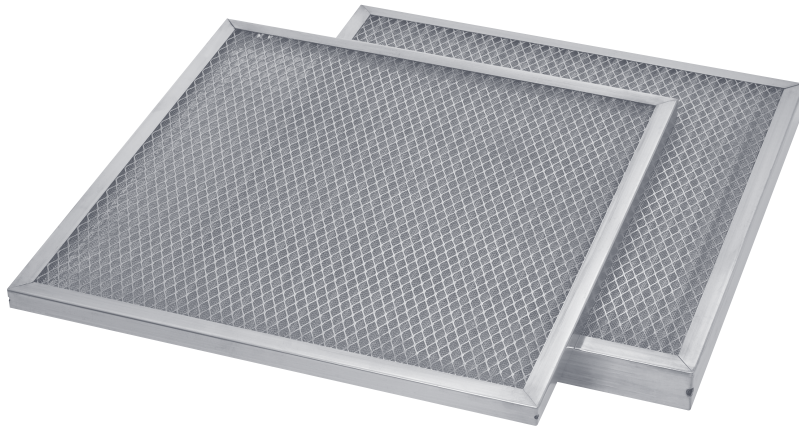


HE SERIES

ECONOMY GRADE FILTER



FILTERS LARGE AIRBORNE PARTICULATE AND COOLANT MIST



Application: The HE series economy grade filter is an impingement type panel filter designed for use in residential, commercial and industrial HVAC applications to remove large airborne particulate and coolant mist from the airstream. Popular applications include outside air intake ducts, rooftop economizer hoods and air handling units. It is an ideal solution for any HVAC system that desires a washable and durable pre-filter with low resistance to airflow.

Construction: The HE Series uses a metal frame to enclose the media pack consisting of multiple layers of corrugated screen wire assembled in a criss-cross fashion for strength. The pack is then placed between two layers of expanded metal and is made to fit firmly inside the frame giving the HE Series filter its exceptional strength and durability. The frame is made with mitered corners and is secured with pop-rivet(s). The frame has drain holes in three corners.

Filter Cleaning and Coating

1. To clean a dirty filter, rinse it with a moderate-to-heavy stream of warm water. High-powered steam cleaning or chemical dips are unnecessary and not recommended.
2. The HE Series filter is not supplied from the factory with filter adhesive coating. If desired, it may be sprayed before installation with Filter Coat, a water soluble adhesive and detergent. AMFCO does not sell Filter Coat nor any adhesive.

Due to continuing research and development, we reserve the right to make modifications to any product.

AVAILABLE IN THREE ALLOYS

HEA

Aluminum

HEG

Galvanized Steel

HES

Stainless Steel

PRODUCT HIGHLIGHTS

- Rigid, Multi-Layered Construction
- Low Resistance to Airflow
- Washable and Reusable
- Corner Drain Holes

FAST FACTS

MINIMUM ORDER:

No Minimum Order

SIZING OPTIONS:

Standard and Special Sizes Available
(See reverse side for details.)

CLASSIFICATION:

UL Classified 900

MAX TEMP:

HEA – 275 Degrees F
HEG – 325 Degrees F
HES – 900 Degrees F

HE SERIES ~ Filter Selection Chart

MODEL	HEA			HEG			HES		
CONSTRUCTION									
Frame Alloy	.030" thick aluminum			24 gauge galvanized steel			24 gauge stainless steel		
Frame Thickness	1/2" exact; nominal* 1", 2" and 4"			Nominal* 1", 2" and 4"			Nominal* 1", 2" and 4"		
Face Grids	.020" thick aluminum			28 gauge galvanized steel			28 gauge stainless steel		
Media	Aluminum screen wire			Aluminum screen wire			Stainless steel screen wire		
APPLICATION									
Application	Airborne particulate and coolant mist			Airborne particulate and coolant mist			Airborne particulate and coolant mist		
Max Operating Temperature	250°			325°			900°		
Washability	Frequent and moderate			Frequent and rigorous			Frequent and rigorous		
STANDARD SIZES									
Nominal* Dimensions (H x W x T)	Part Number	Carton Quantity	Carton Weight	Part Number	Carton Quantity	Carton Weight	Part Number	Carton Quantity	Carton Weight
12 x 24 x 1	HEA101224	12	14.9	HEG101224	12	33.6	HES101224	12	32.1
16 x 20 x 1	HEA101620	12	14.3	HEG101620	12	33.7	HES101620	12	32.7
16 x 25 x 1	HEA101625	12	17.2	HEG101625	12	40.1	HES101625	12	39.4
20 x 20 x 1	HEA102020	12	16.7	HEG102020	12	39.3	HES102020	12	38.8
20 x 25 x 1	HEA102025	12	20.6	HEG102025	12	47.1	HES102025	12	47.2
24 x 24 x 1	HEA102424	12	23.2	HEG102424	12	52.5	HES102424	12	53.2
12 x 24 x 2	HEA201224	12	19.0	HEG201224	12	42.7	HES201224	12	41.6
16 x 20 x 2	HEA201620	6	10.2	HEG201620	6	22.4	HES201620	6	22.2
16 x 25 x 2	HEA201625	6	12.2	HEG201625	6	26.5	HES201625	6	26.7
20 x 20 x 2	HEA202020	6	11.8	HEG202020	6	25.8	HES202020	6	26.1
20 x 25 x 2	HEA202025	6	14.6	HEG202025	6	31.0	HES202025	6	31.9
24 x 24 x 2	HEA202424	6	16.5	HEG202424	6	34.4	HES202424	6	35.9
12 x 24 x 4	HEA401224	3	10.0	HEG401224	3	18.8	HES401224	3	19.4
16 x 20 x 4	HEA401620	3	9.2	HEG401620	3	18.1	HES401620	3	19.1
16 x 25 x 4	HEA401625	3	11	HEG401625	3	21.3	HES401625	3	22.9
20 x 20 x 4	HEA402020	3	10.6	HEG402020	3	20.8	HES402020	3	22.4
20 x 25 x 4	HEA402025	3	13.1	HEG402025	3	24.9	HES402025	3	27.4
24 x 24 x 4	HEA402424	3	14.9	HEG402424	3	37.7	HES402424	3	31.0

HE SERIES NOTES

SIZING INFORMATION

* What does Nominal mean? Standard size filters are of a nominal dimension. This means the height and width dimensions are undercut by a certain amount. See below for the exact amount of undercut for each dimension.

** Filter Thickness: 1/2" is exact, nominal 1" (actual 7/8"), nominal 2" (actual 1-3/4") and nominal 4" (actual 3-3/4").

- Standard nominal filters are 1/2" undercut on the height and width dimensions.
- Special size filters are made to the exact height and width dimensions provided.
- Standard and Special size filters are available in 1/2", exact (HEA only), nominal 1" (7/8" actual), nominal 2" (Actual 1-3/4") and nominal 4" (3-3/4").
- Tolerance height and width: ± 1/8"
- Tolerance thickness: ± 1/32"

CLASSIFICATION AND TEST NOTES

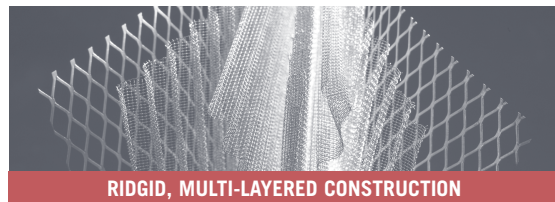
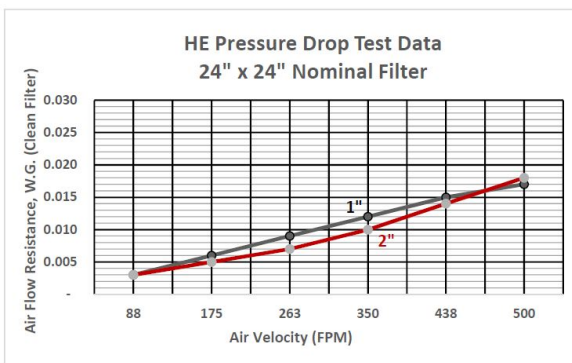
- UL Classified 900
- Rated Airflow: 350 fpm
- Recommended Airflow Range: 300 – 500 fpm.
- Dust Holding Capacity:
 - 1" thick: 95 grams per square foot
 - 2" thick: 109 grams per square foot
- Average Arrestance:
 - 1" thick: 35% at rated airflow
 - 2" thick: 45% at rated airflow
- Recommended final resistance is .50" W.G.
- Independent test report available for performance details

INSTALLATION CONSIDERATIONS

- The HE Series filter may be installed in HVAC systems vertically or horizontally.

ADDITIONAL INFORMATION

- The 1/2" exact filter uses an .025" thick aluminum frame.
- The 1/2" exact filter is 4-ply.
- The nominal 1" (actual 7/8") filter is 4-ply.
- The nominal 2" (actual 1-3/4") filter is 5-ply.



RIGID, MULTI-LAYERED CONSTRUCTION