



# **AIS RESOURCES** **BRIGHT GOLD PROJECT**

A 60% Joint venture in one of the most prolific gold mining areas in Victoria, Australia

January 2022

TSX.V: AIS | OTCQB: AISSF  
[www.aisresources.com](http://www.aisresources.com)

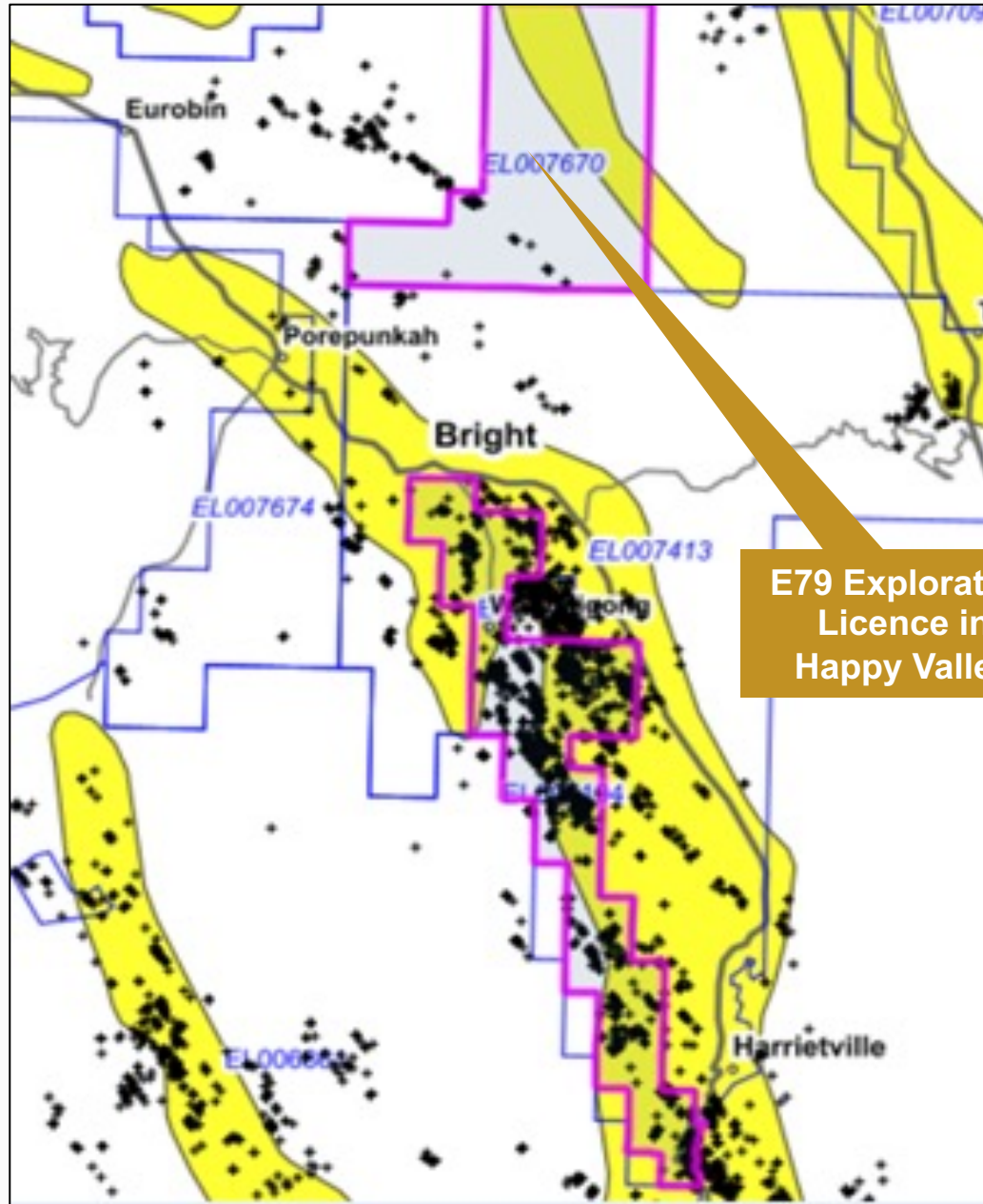




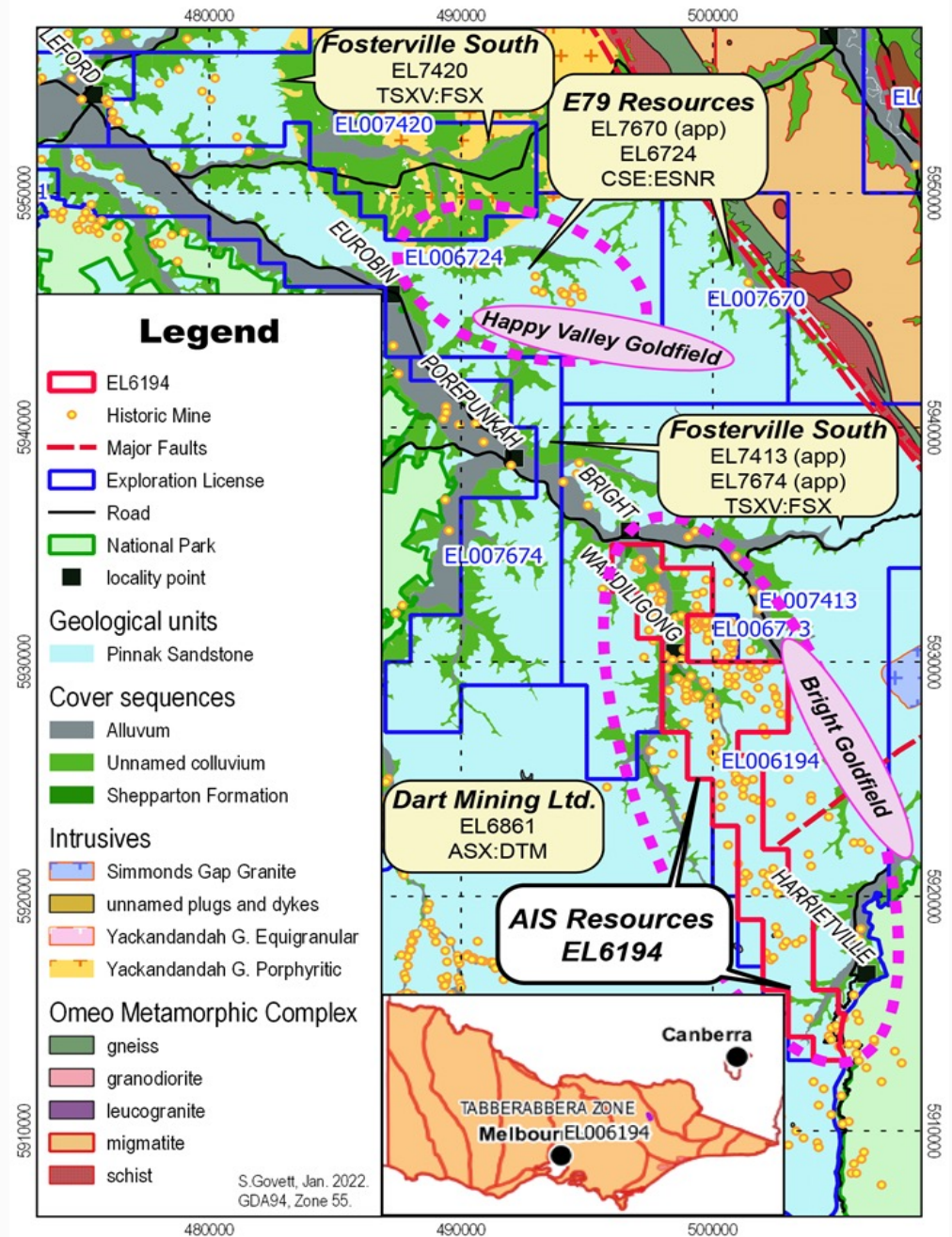
Information set forth in this presentation contains forward-looking statements that are based on assumptions as of the date of this presentation. These statements reflect management's current estimates, beliefs, intentions and expectations. They are not guarantees of future performance. A.I.S Resources Ltd. ("AIS") cautions that all forward looking statements are inherently uncertain and that actual performance may be affected by a number of material factors, many of which are beyond AIS's control. Such factors include, among other things: risks and uncertainties relating to metal prices, changes in planned work resulting from weather, logical, technical or other factors, the possibility that results of work will not fulfill expectations and realize the perceived potential of AIS's mineral properties, uncertainties involved in the interpretation of drilling results and other tests, the possibility that required permits may not be obtained in a timely manner or at all, risk of accidents, equipment breakdowns or other unanticipated difficulties or interruptions, the possibility of cost overruns or unanticipated expenses in work programs, the risk of environmental contamination or damage resulting from the exploration operations, the need to comply with environmental and governmental regulations and the lack of availability of necessary capital, which may not be available to AIS on terms acceptable to it or at all. AIS is subject to the specific risks inherent in the mining business as well as general economic and business conditions. Accordingly, actual and future events, conditions and results may differ materially from the estimates, beliefs, intentions and expectations expressed or implied in the forward looking information. Except as required under applicable securities legislation, AIS undertakes no obligation to publicly update or revise forward-looking information. AIS does not intend, and does not assume any obligation, to update these forward-looking statements, except as required under applicable securities legislation. For more information on AIS, readers should refer to [www.sedar.com](http://www.sedar.com) for AIS's filings with the Canadian securities regulatory authorities and our website [www.aisresources.com](http://www.aisresources.com)

# Premium Location – Close Proximity to E79

TSX-V: AIS  
OTCQB: AISSF



**E79 Exploration Licence in Happy Valley**





# Rockchips of Gold from Williams Reef Mine

TSX-V: AIS  
OTCQB: AISSF

Williams Reef Mine rockchips of gold located only 600m metres from where drilling has commenced.



*Free gold in quartz and shales*



Goldfield	Mine/Reef	From	To	Ore (t)	Oz.	Kg	grade (g/t)
Bright— Wandiligong— Freeburgh	Pioneer	1861	1909	26,165	11,050	344	13
	Hillsborough	1873	1895	12,765	9,646	300	24
	Mt Orient	1879	1903	6,885	6,197	193	28
	Wallaby	1868	1891	6,466	5,847	182	28
	Try Again	1866	1909	7,134	5,825	181	25
	Homeward Bound	1870	1877	12,141	5,505	171	14
	Richardsons	1860	1872	2,812	5,433	169	60
	Elgin	1871	1871	2,684	3,831	119	44
	English and Welsh	1872	1881	4,135	3,408	106	26
	Reliance	1860	1879	6,712	3,119	97	14
	Magpie	1871	1906	2,963	2,848	89	30
	Ebenezer	1861	1877	2,069	2,434	76	37
	Victoria	1861	1885	1,512	2,348	73	48
	Birthday	1876	1881	2,976	1,864	58	19
	Cornishmans	1860	1884	1,485	1,678	52	35
	New Moon	1869	1871	1,382	1,671	52	38
	Blowfly	1879	1891	687	1,661	52	75
	Woolshed	1861	1882	1,615	1,538	48	30
	Morgan Davis	1862	1886	666	1,068	33	50
	Harp of Erin Co.	1869	1878	4,369	1,052	33	7
Rose, Thistle, & Shamrock	1861	1933	119,175	77,872	2,422	20	
Sambas	1910	1970	39,624	41,931	1,304	33	
Mons Meg	1880	1895	42,759	23,560	733	17	
United Miners	1867	1884	34,674	19,332	601	17	
Tiddledee & Money King	1869	1890	12,919	15,871	494	38	
Johnsons & Lady Jane	1867	1940	39,635	12,535	390	10	
Red Robin	1941	1992	4,000	6,761	210	53	
Crescent	1890	1899	8,128	5,999	187	23	
Jackass	1878	1889	1,870	5,970	186	99	
Harrietville	Monarch	1896	1916	3,300	4,164	130	39
Guerdon	1884	1909	8,128	3,937	122	15	
Biplane	1920	1925	6,924	3,762	117	17	
Buckeye	1877	1909	2,258	3,503	109	48	
Big Gun	1890	1917	5,288	2,929	91	17	
Extended							
Champion	1863	1882	967	2,271	71	73	
Landtax	1878	1880	2,929	2,244	70	24	

## The Past 100 Years Produced Considerable Quantities of Gold on the Bright Gold EL

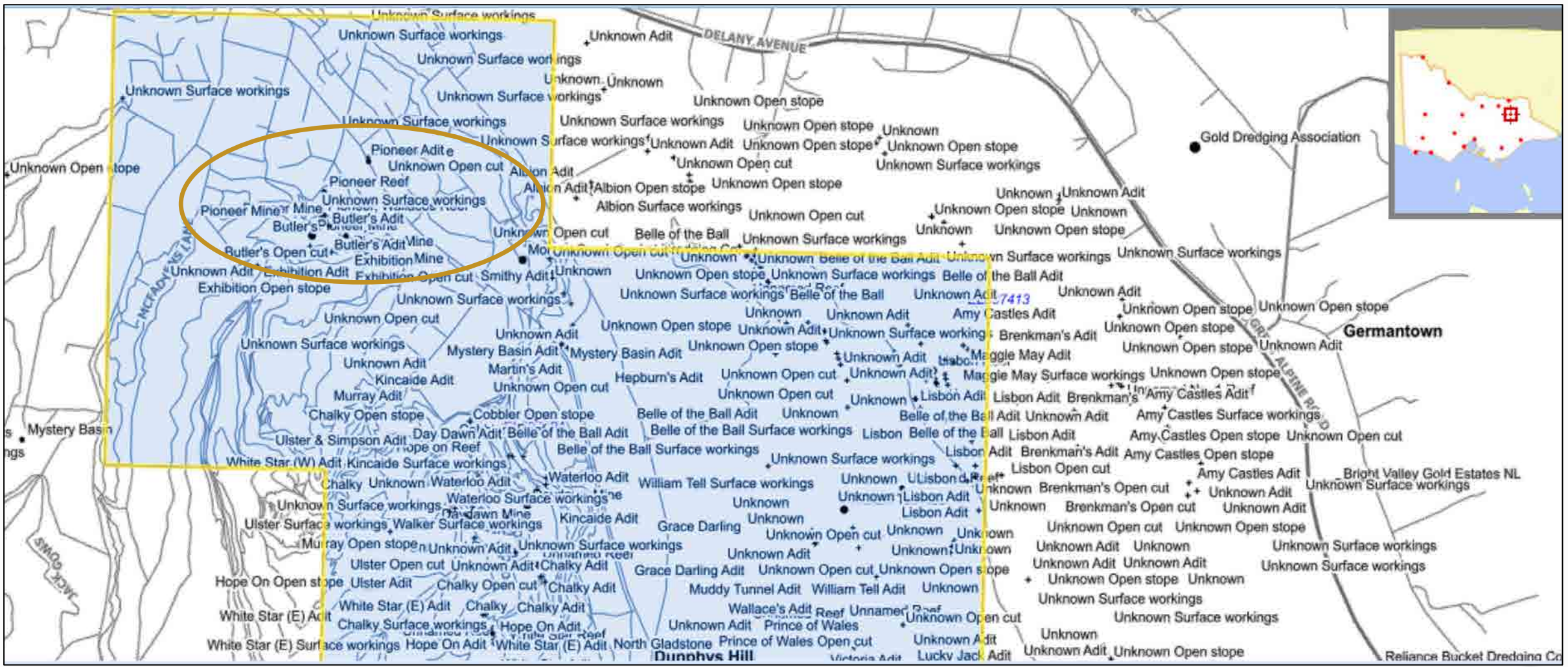
Early alluvial mining began in the Oven River Valley after the discovery of alluvial gold in the Buckland Valley to the west. Alluvial mining soon declined and hard rock mining of gold from quartz reefs initiated in 1858 at the Pioneer reef, then into the hills surrounding the valley.

Large scale bucket dredging spanned the period 1900-1909, with over 40 dredges in the upper Oven River. Production declining by 1914 and completely ceased in the 1920s.

Over 140 registered gold production centres in the tenement are held on record within Victorian government geoscience. From remote field work it is evident that many more unregistered pits, trenches, and test sites exist throughout the area. It is quite possible that upwards of a 1,000 localities have been tested or extracted from.

# Highlights – 250 Historical Mines, Reefs & Workings

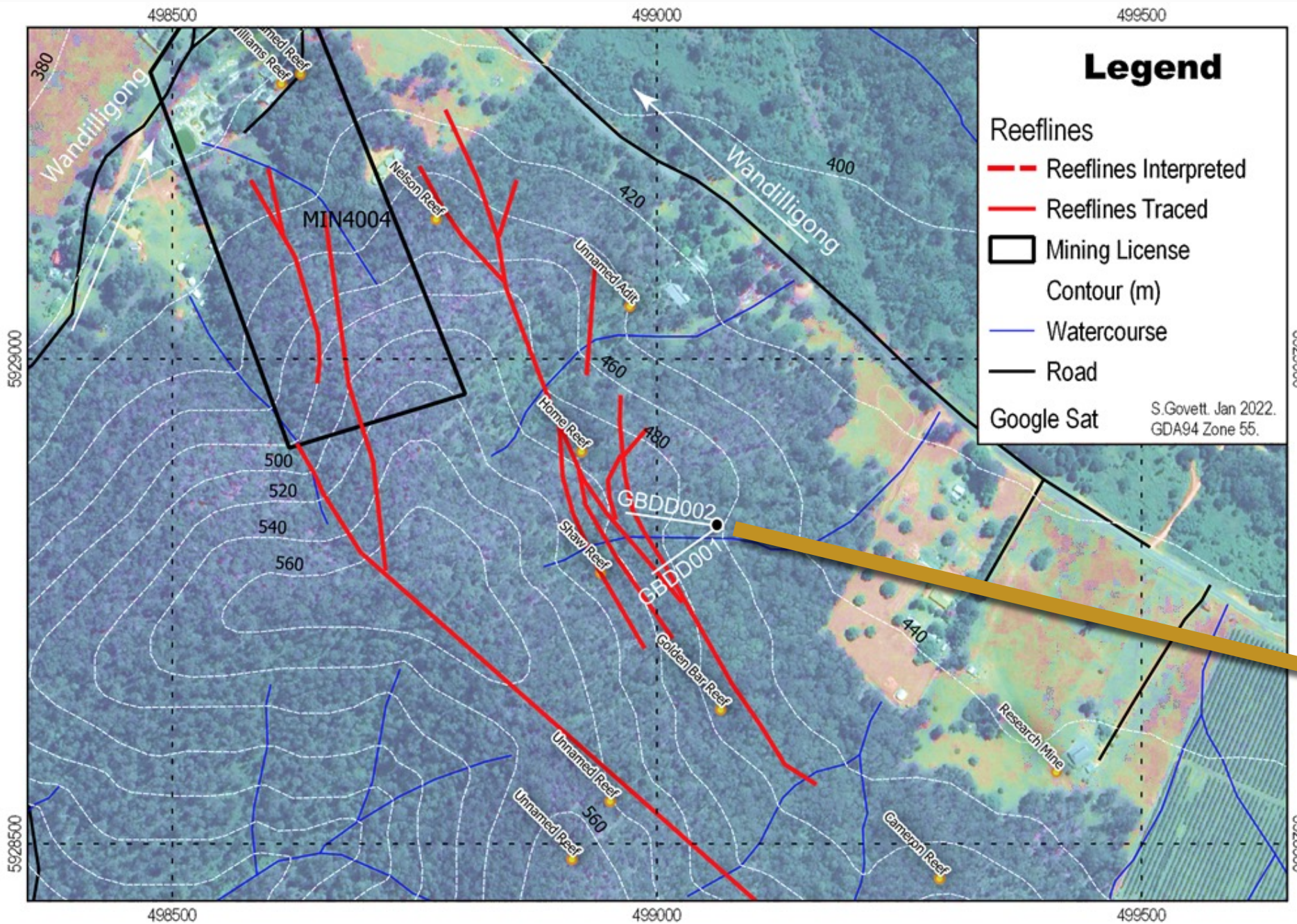
The northern section of the Exploration Licence shows the large number of historic mines, reefs and workings that are walk-up targets for drilling. The Pioneer Mine (shown in the gold ellipse) was the most successful mine in the northern area and will be drilled shortly by AIS Resources. Adjacent to the Pioneer mine is a cleared pine plantation area. The town of Bright is to the north.





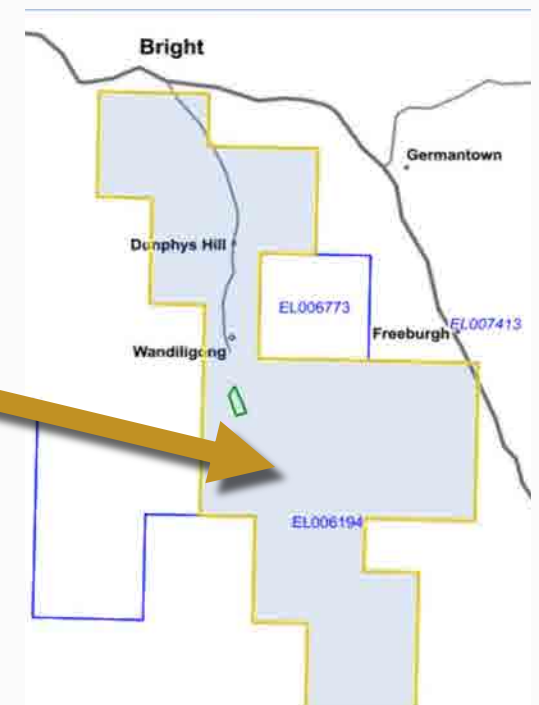
# Golden Bar Reef Drill Holes – GBDD001-002

TSX-V: AIS  
OTCQB: AISSF



Drill holes GBDD001 and GBDD002 were drilled to test the down plunge intersections of Shaws-Home Reef and Red Leader-Home Reef. Logging and assaying of these holes are to be finalised in the first quarter of 2022.

MIN4004 is in our exploration licence but owned by another miner.







AIS Resources' Chief Geologist Denis Walsh and Stewart Govett have determined that 223 metres of DDH core from two drill holes produced in the most drilling show massive sulphides that may contain gold and a large quartz vein intersected with pyrites and arseno-pyrites.

Comparison of the structural relationships between five gold deposits in Ordovician rocks of the central Victorian slate belt reveals a similar history and structural control of gold mineralization.

Large quartz veins, spatially associated with gold mineralization, such as the famous saddle reefs of Bendigo, formed during the second deformation, earlier than the gold mineralization itself.

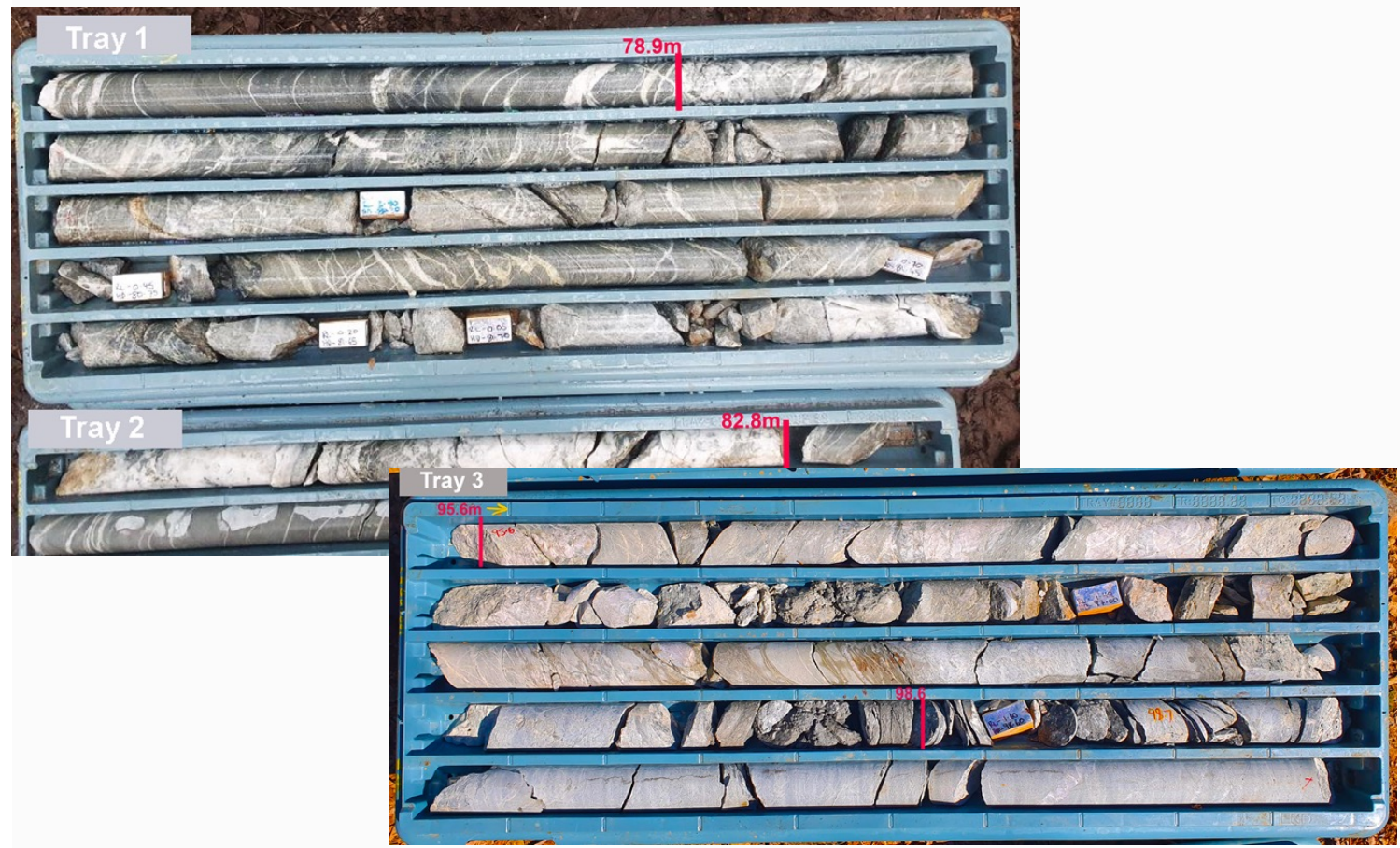
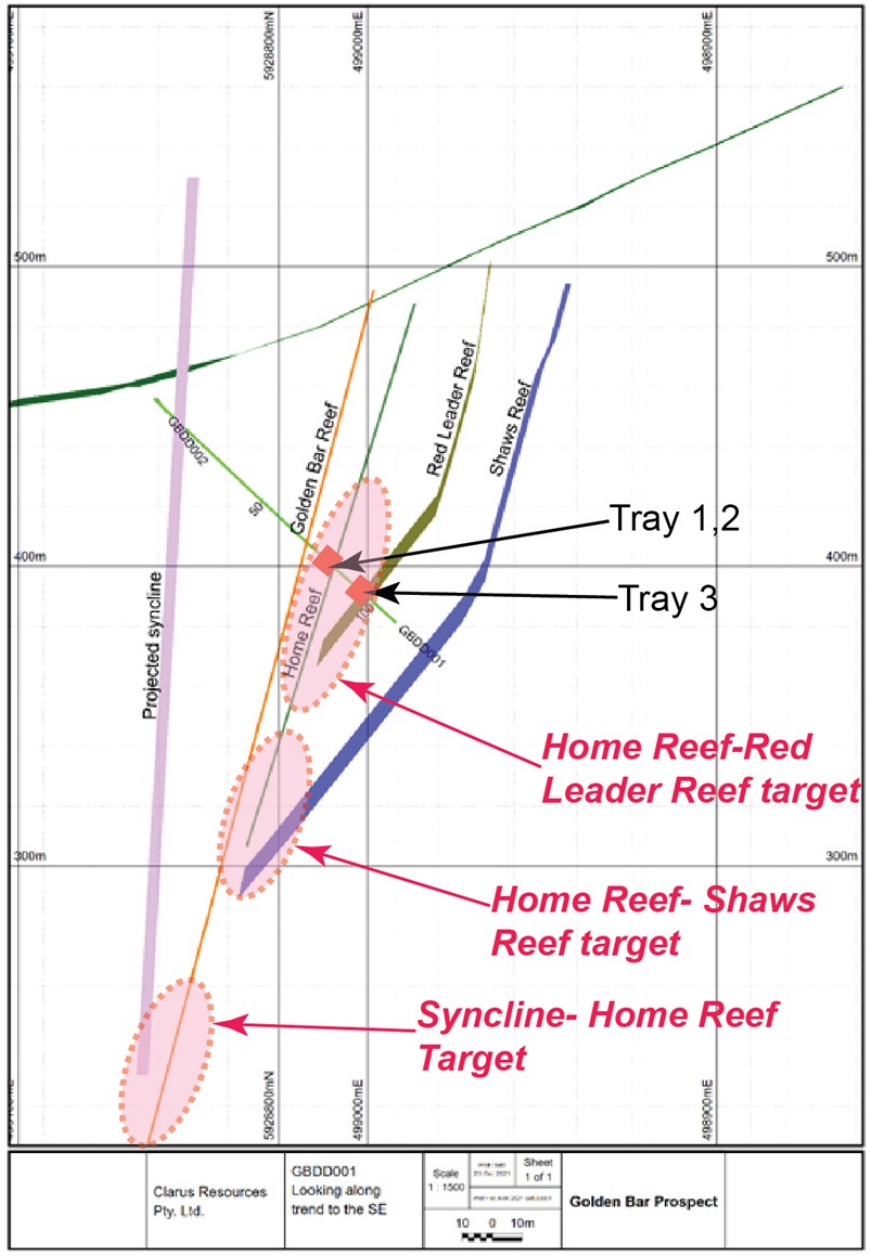
Access of fluids resulting from metamorphism and deformation to the brecciated, fractured and jostled blocks of country rock created conditions suitable for the precipitation of gold through a sequence of alteration, replacement and infill.

The dominant structural relationships that resulted in the generation of these sites were (A), the high angle of the axial plane of the fourth deformation to earlier structures and (B), the presence, during mineralization of large, pre-existing quartz veins that acted as structural discontinuities on which brecciation could occur. These factors allow a predictive capacity for exploration in the region.

*Stewart Govett and Chief Geologist Denis Walsh inspecting some of the 223 metres of DDH core from two drill holes showing massive sulphides that may contain gold and a large quartz vein intersected with pyrites and arseno-pyrites.*



# Modelled Section of the Home, Shaws and Golden Bar Reefs

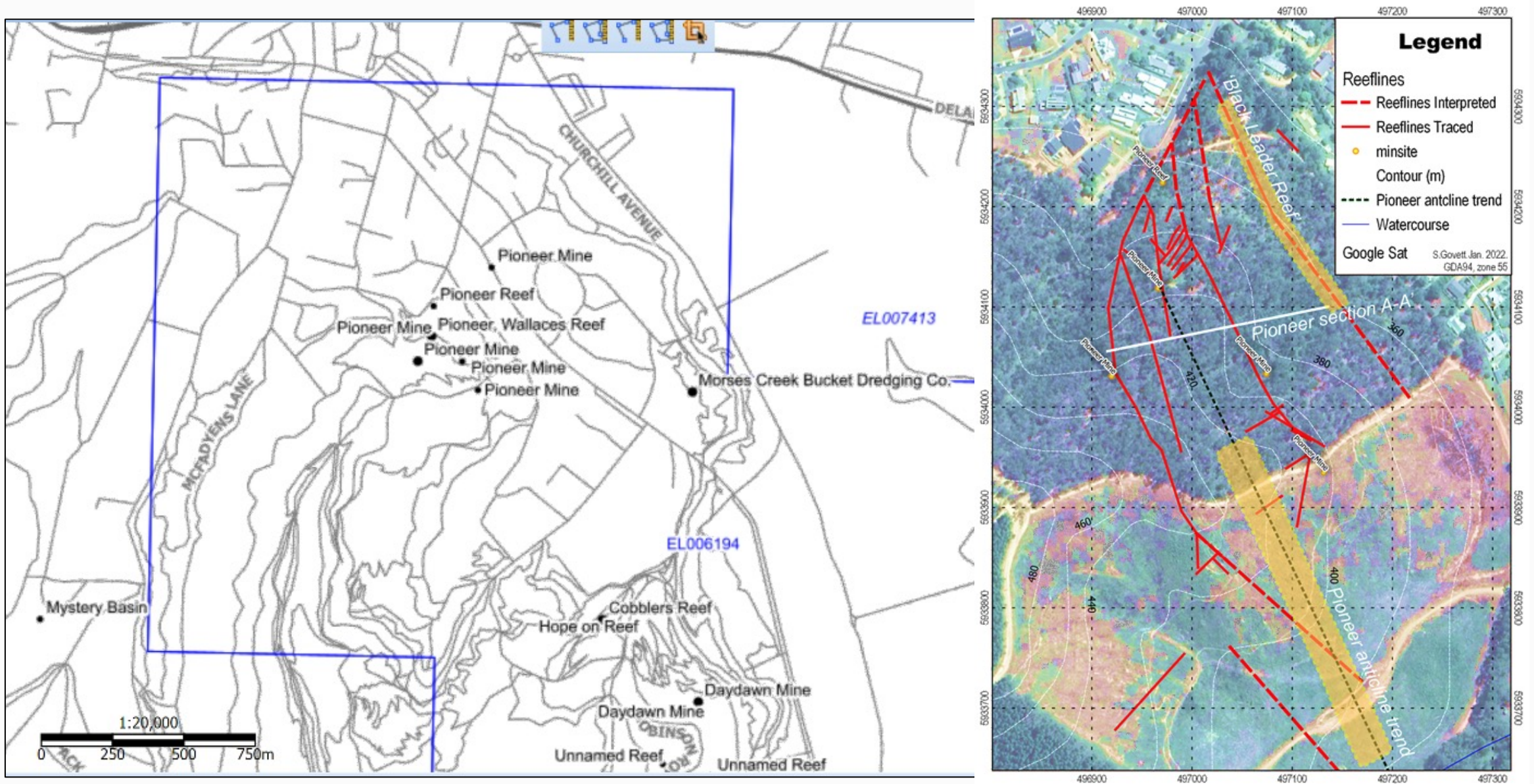


A historical account comes from the last records of mining immediately above these intersections by way of the Kenny, 1966. Mining concluded in 1905 on mining fronts associated with the Home Reef and Shaws Reef. It was calculated that Shaws Reef yielded a grade of 10.14 g/t from 487.7 ton of ore and Home Reef yielded 22.28 g/t from 287 ton of ore. The weighted average from a total of 779.3 ton of ore is 14.66 g/t, with auriferous pyrite contributing between 1.2-1.5 g/t. Geological Survey of Victoria Bulletin No.44, pp.39-40.

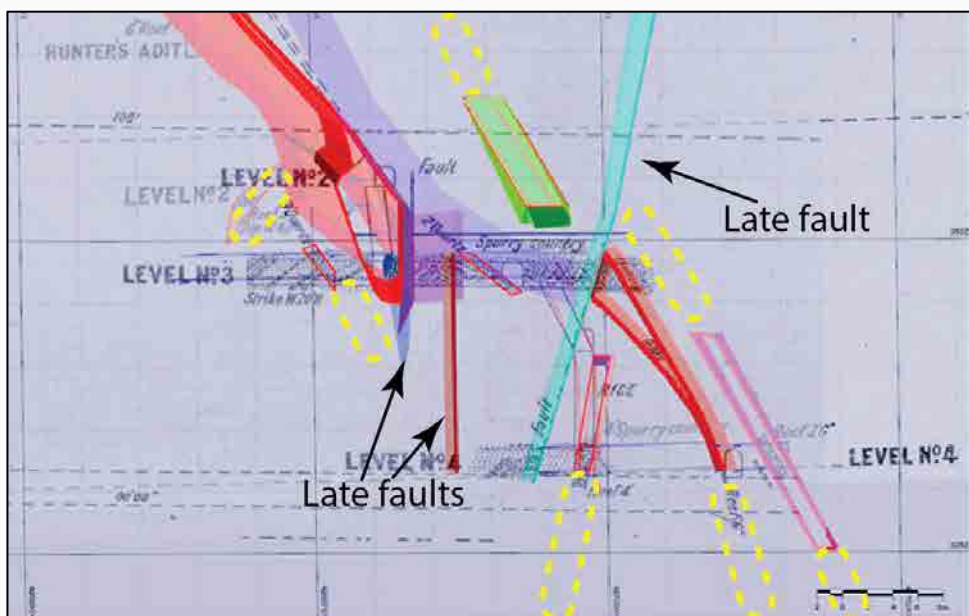


# Pioneer Mine – Our Next Highly Prospective Target

Detailed map of the numerous prospective opportunities around the various Pioneer Mine sites and reefs.







The Pioneer Mine has significant unrealized mineral potential, as no modern mining or meaningful exploration has occurred on this property since mining ceased.

Three-dimensional modeling from mining records in the previous year demonstrated the potential for widths of quartz reef amenable to modern mining methods.

Modelling from the plans retained at Pioneer demonstrate at least one east dipping reef bulge at the axial plane and continues to surface. Way from the fold hinge widths appear at less than 0.5m, while on intersecting the hinge a 'neck' style of reef occurs as west dipping limb reef also dilates. Modeling also suggests that there more than one, or a series of stacked reefs in proximity of the anticline.

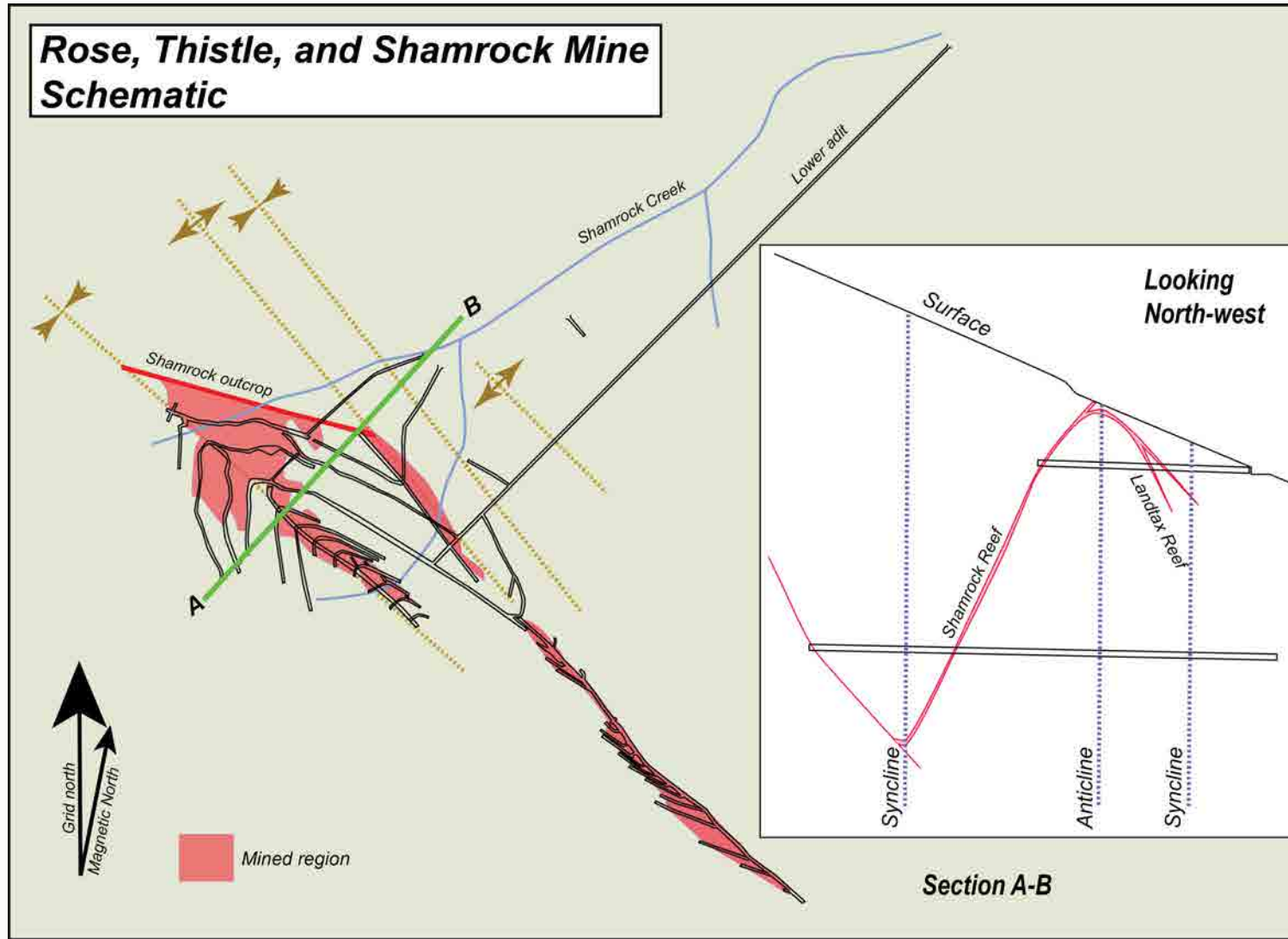
At the intersect with the hinge this 'bulge' zone is up to 12m wide (Kenny, 1966) and at the time of writing it was quoted that the grade of this zone was 12.2 g/t. While mining the lower levels of this mine the No.5 adit intersected a reef called the Black Leader which was quoted as being between 0.3-2.0m wide and grading 20 oz/t (633 g/t). This prospect is of the highest priority owing to its high grades and nested high-grade lodes. Initial planning is to test the down-plunge extension of the neck reef



L: Target Drill Hole location. R: Pioneer reef & adit obscured by undergrowth.



Rock sample at (RTS) BR0016 grading 1.92 g/t Au. Sample is from waste rock proximal to undocumented minor shaft, note the pyrite pseudomorphs.





## Previous Exploration Work Program

Recent work in 2020 included field activities that were focused on examining historic surface geochemistry in proximity to the Rose Thistle and Shamrock workings. Two undocumented surface workings were sampled where rock samples containing gold were found in waste rock samples at both these locations. This and numerous other rock samples from the location near historic high grade soil results frequently returned approximately 1ppm gold.

Clarus undertook 3D modeling of historic mines in the tenement from data collected by handheld GPS. These areas were related to Mongrel, Lone Hand, Pioneer, Golden Bar, and Hillsborough/John Bull gold prospect areas. Clarus undertook a maiden drill program at the Golden Bar prospect for two holes down plunge from historically known mining fronts. The core is currently being processed.

- **High Resolution LiDAR**

Airborne LiDAR is an acronym of "light detection and ranging" or "laser imaging, detection, and ranging". Lidar sometimes is called 3-D laser scanning, a special combination of 3-D scanning and laser scanning which is used in exploration to produce a high resolution surface of the ground through tree cover. It is useful in showing remote historic workings and can assist further planning and discovery of unregistered mine activities.

- **Synthetic Aperture Radar**

Multi-polarized satellite synthetic aperture radar (SAR) may be used to estimate surface and shallow electrical conductivities. Multiple passes with different look angles may be merged to fill-in radar topography shadows while time series stacking may be used to remove weather related artifacts. L-band SAR, with a wavelength of 23.5 cm, can see through moderate vegetation and depth penetration of several meters is possible, depending on the target and local geology. Satellite-based SAR systems offer a cost-effective proxy for targeting and planning of surface geochemistry. A decades old SAR database also allows for remote exploration.

- **Diamond Drilling**

- Continue to drill for extension down dip and down-plunge at Golden Bar Prospect
- Planning and initiate drilling at Pioneer (Feb 2022 rig will be available)

- **Soil Sampling**

To be evaluated following interpretation of SAR and LiDAR across the tenement (commencing on Mongrel line Feb 2022)

- **Reconnaissance**

To be evaluated following interpretation of SAR and LiDAR across the tenement.

- **3-D modeling**



## **A.I.S. Resources Limited**

Suite 3501

1055 Dunsmuir Street

PO Box 49114

Vancouver BC V7X 1H7

Canada

T +1-604-687-6820

Listed on:

TSX.V: AIS | OTCQB: AISSF

[www.aisresources.com](http://www.aisresources.com)

For more information, please contact:

Martyn Element

Chairman of the Board, Director

M +1-604-220-6266

[melement@aisresources.com](mailto:melement@aisresources.com)

Phillip Thomas

Chief Executive Officer, President,

Geologist, Certified Mineral Valuer

M +1-323 5155 164 (Canada/USA)

M +61 433 747 380 (International Cell)

[pthomas@aisresources.com](mailto:pthomas@aisresources.com)