

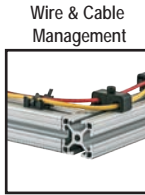
Pictorial Table Of Contents



Page 785



Page 785



Page 786



Page 786

Accessories

End Cap with Push-In Fastener



Page 787

Push-In Fastener



Page 787

Self Tapping End Cap Screw



Page 788

End Cap with Molded Push-In Stem



Page 789

Screw-On End Cap



Page 790

3 Way - Corner Bracket Cover Cap



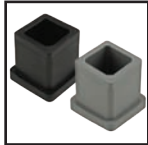
Page 791

Ready Tube® End Cap



Page 792

Quick Frame® End Cap



Page 792

Aluminum T-Slot Cover



Page 793

Standard T-Slot Cover



Page 794

Economy T-Slot Cover



Page 795

Reduction T-Slot Cover



Page 796

Rubber T-Slot Cover



Page 797

Tread Strip



Page 798

Wire Housing



Page 799

Wire Housing Cover



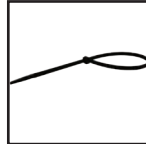
Page 800

Wiring Duct



Page 801

Cable Tie



Page 802

Cable Tie Mounting Pad



Page 803

Drop-In Cable & Tube Clip



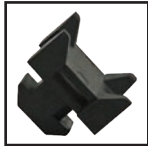
Page 804

Cable & Tube Clip



Page 805

Cable Tie Mounting Block



Page 806

Single Cable & Tube Clamp



Page 807

Double Cable & Tube Clamp



Page 808

Wiremold® Power Strip



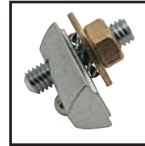
Page 809

Anodize Breaker



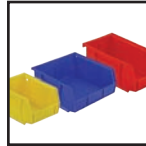
Page 810

Grounding Terminal



Page 811

Storage Bin



Page 812

CONTINUE



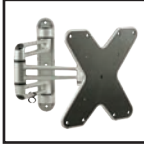
Pictorial Table Of Contents

Storage Bin Hanger



Page 813

Heavy-Duty Monitor Mount



Page 814

Adjustable Monitor Mount



Page 815

Slide-In Tool Hanger



Page 816

Tool Hanger Spring Hook



Page 817

Vertical Mount Hook



Page 818

Horizontal Mount Hook



Page 819

Magnetic Tool Holder



Page 820

Tool Holder - Open Bottom



Page 821

Cup Holder - Closed Bottom



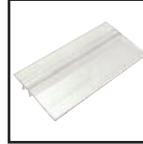
Page 822

Light-Duty Adhesive Clamp



Page 823

Label Holder



Page 824

Rubber Bumper



Page 825

Tabletop Mounting Tape



Page 826

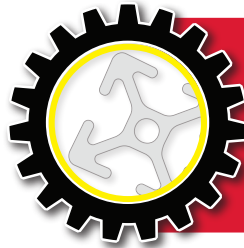


Finishing Touches

80/20 accessories pull together your project and give it the finishing touches to make it fit your exact specifications. There are a wide variety of options; from storage and organization to wire and tube management, you'll find what you need to enhance and personalize your project.

When adding accessories, it's helpful to consider a few overall categories:

- Protection
- Wire & Cable Management
- Storage and Organization



Keep in Mind

Some products can be used in multiple categories. For instance, T-slot covers provide protection from debris buildup and can also be used to manage wires and cables recessed within the T-slot.

Protection

Accessories in this category are used for a range of purposes from protecting people and equipment from sharp edges and damage to keeping dust out of T-slots. Some of the products, such as T-slot covers and end caps, also add a finishing look to your project.

- End caps
- T-slot covers
- Tread strip
- Anodize breaker
- Grounding terminal
- Rubber bumper

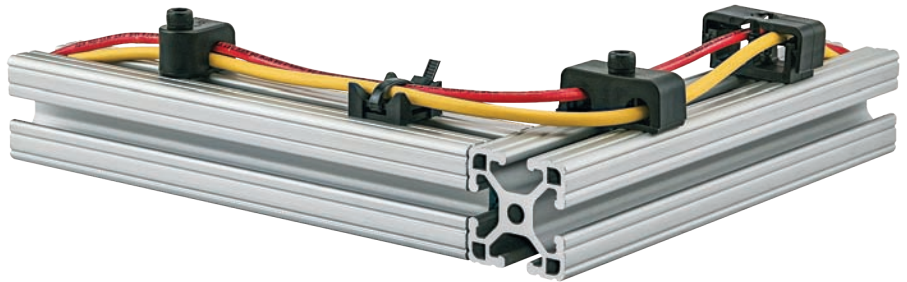


Tip: Try aluminum T-slot covers to blend in with your profile or use colors to stand out and denote caution or warning.

Wire and Cable Management

Wire and cable management products improve safety by keeping your application clean, protected and organized. These products decrease the possibility of damage to wires, cables and tubes and can be quickly and easily installed into any project. The variety of options available provides flexibility in design and implementation.

- Wiring duct
- Wire housing & covers
- Cable tie mounting pad
- Cable and tube clip
- Cable tie mounting block
- Single and double tube clamps



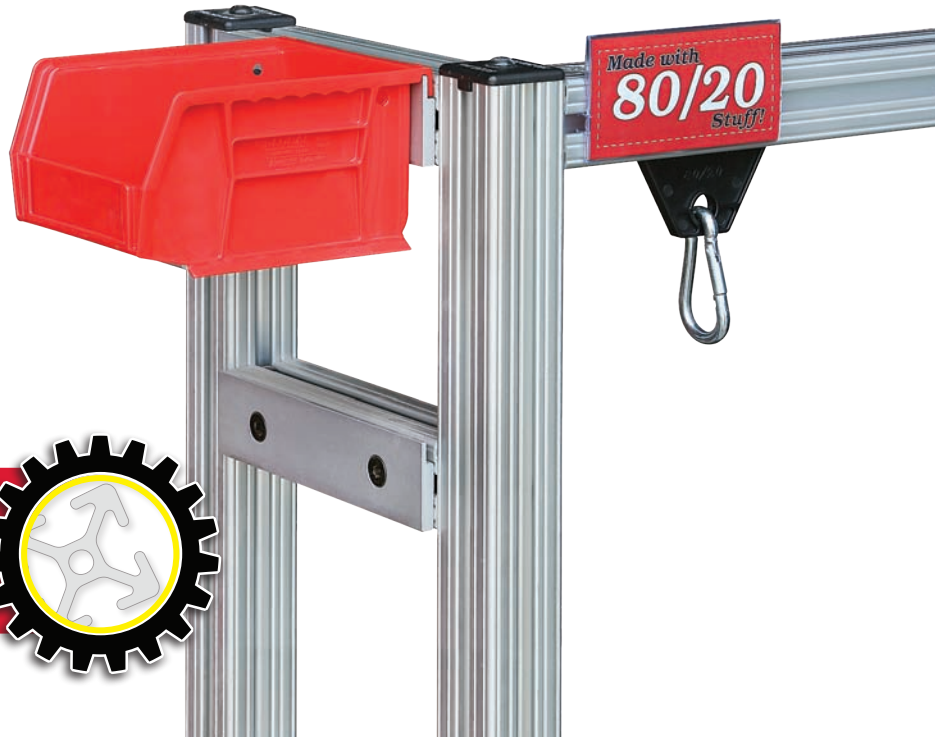
Tip: Wiring duct has interlocking ends so you can make the duct any customized length.

Storage and Organization

Storage and organization accessories come in a range of colors and sizes to accommodate your processes. Keep clutter at bay and streamline operations by incorporating these products into your application.

- Storage bins
- Slide-in tool hanger
- Mounting hooks
- Tool hanger spring hook
- Light-duty adhesive clamp
- Tool & Cup Holders
- Label holder

Important Note: Storage bins are mounted to a T-slot profile using storage bin hangers (see page 813).



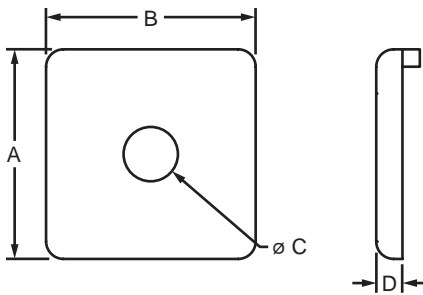
That's Not All

Be sure to browse through all of the products to find everything you need to finish your project.



Part Description:

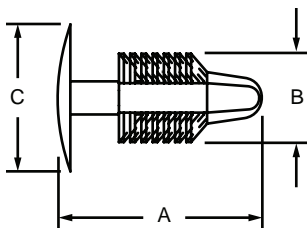
The end cap with push-in fastener adds a finishing touch to your project and closes off profile ends to limit dust and debris buildup. It can be installed with a push-in fastener, self-tapping screw (page 788) or into a tapped hole using a button head socket cap screw. Choose from black, red, blue, yellow or gray to color-coordinate with your application. The black end cap is available with or without the 80/20 logo, while the colored caps include the logo.



80/20 Black Cap	Red Cap	Blue Cap	Yellow Cap	Gray Cap	Black Cap	Series	A	B	C	D	Weight
2015	2015RED	2015BLU	2015YEL	2015GRA	2015-Plain	10	1.000"	1.000"	.257"	.125"	.008 lb
2025	2025RED	2025BLU	2025YEL	2025GRA	2025-Plain	10	1.000"	2.000"	.257"	.125"	.009 lb
2026	2026RED	2026BLU	2026YEL	2026GRA	2026-Plain	10	1.000"	3.000"	.257"	.125"	.013 lb
2028	2028RED	2028BLU	2028YEL	2028GRA	2028-Plain	10	2.000"	2.000"	.257"	.125"	.017 lb
2030	2030RED	2030BLU	2030YEL	2030GRA	2030-Plain	15	1.500"	1.500"	.328"	.188"	.013 lb
2045	2045RED	2045BLU	2045YEL	2045GRA	2045-Plain	15	1.500"	3.000"	.328"	.188"	.031 lb
2046	2046RED	2046BLU	2046YEL	2046GRA	2046-Plain	15	1.500"	4.500"	.328"	.188"	.049 lb
2050	2050RED	2050BLU	2050YEL	2050GRA	2050-Plain	15	3.000"	3.000"	.328"	.188"	.064 lb

80/20 Black Cap	Black Cap	Series	Material	Finish	Process	A	B	C	D	Weight
25-2015	25-2015-Plain	25	ABS	Matte	Molded	25.00mm	25.00mm	6.80mm	3.00mm	.0044 kg
25-2025	25-2025-Plain	25				25.00mm	50.00mm	6.80mm	3.00mm	.0068 kg
25-2028	25-2028-Plain	25				50.00mm	50.00mm	6.80mm	3.00mm	.0034 kg
40-2030	40-2030-Plain	40				40.00mm	40.00mm	8.40mm	4.50mm	.0068 kg
40-2045	40-2045-Plain	40				40.00mm	80.00mm	8.50mm	4.50mm	.0132 kg
40-2050	40-2050-Plain	40				80.00mm	80.00mm	8.50mm	4.50mm	.0282 kg

Push-In Fastener



3272, 25-3272



3274, 40-3274

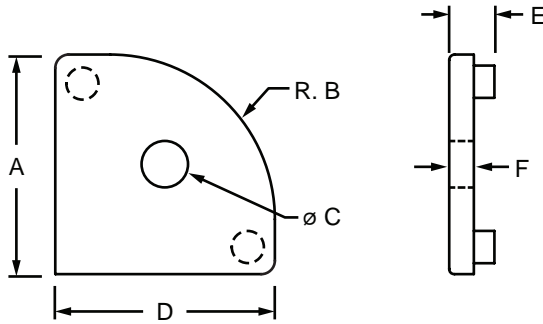
Black Cap	Red Cap	Blue Cap	Yellow Cap	Gray Cap	Series	Material	A	B	C	Weight
3272	3272RED	3272BLU	3272YEL	3272GRA	10	Plastic	.555"	.240"	.400"	.0004 lb
3274	3274RED	3274BLU	3274YEL	3274GRA	15		.895"	.300"	.700"	.0020 lb
25-3272	—	—	—	—	25		14.10mm	6.10mm	10.16mm	.0002 kg
40-3274	—	—	—	—	40		22.73mm	7.62mm	17.88mm	.0009 kg

Finishing Your Frame

F Fractional 10 Series 15 Series M Metric 25 Series 40 Series

End Cap with Push-In Fastener / Self Tapping End Cap Screw

80/20 Inc.



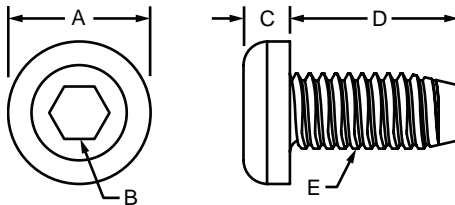
FINISH YOUR FRAME

80/20 Black Cap	Red Cap	Blue Cap	Yellow Cap	Gray Cap	Black Cap	Series	A	B	C	D	E	F	Weight
2022	2022RED	2022BLU	2022YEL	2022GRA	2022-Plain	10	1.000"	.727"	.257"	1.000"	.213"	.125"	.004 lb
2035	2035RED	2035BLU	2035YEL	2035GRA	2035-Plain	15	1.500"	1.125"	.328"	1.500"	.283"	.188"	.016 lb
40-2033	—	—	—	—	—	40	40.00mm	30.00mm	8.45mm	40.00mm	8.25mm	4.50mm	.0073 kg

Material Specifications

Material	Finish	Process
ABS	Matte	Molded

Self Tapping End Cap Screw (STECS)



Black Zinc

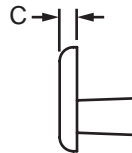
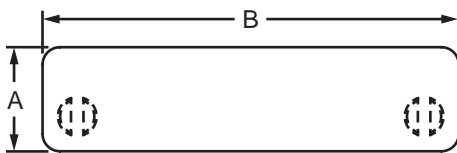
Bright Zinc



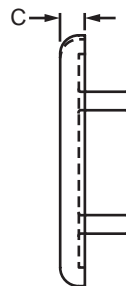
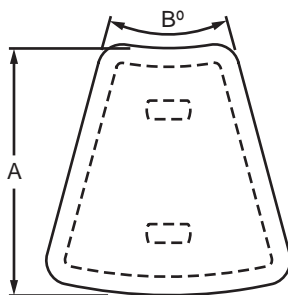
Part No.	Series	Material	Finish	A	B	C	D (Length)	E (Thread)	Weight
3766	10	Steel	Bright Zinc	.428"	.157"	.127"	.360"	12-24	.005 lb
3266	10		Black Zinc	.428"	.157"	.127"	.360"	12-24	.005 lb
3767	15		Bright Zinc	.428"	.157"	.127"	.360"	M7 x 1.0	.008 lb
3267	15		Black Zinc	.428"	.157"	.127"	.360"	M7 x 1.0	.008 lb
25-3766	25		Bright Zinc	10.90mm	4.00mm	3.23mm	9.12mm	12-24	.0025 kg
25-3266	25		Black Zinc	10.90mm	4.00mm	3.23mm	9.12mm	12-24	.0025 kg
40-3767	40		Bright Zinc	10.90mm	4.00mm	3.23mm	9.14mm	M7 x 1.0	.0037 kg
40-3267	40		Black Zinc	10.90mm	4.00mm	3.23mm	9.14mm	M7 x 1.0	.0037 kg

Part Description:

The end cap with molded push-in stem adds a finishing touch to your project and closes off profile ends to limit dust and debris buildup. It comes in black with molded push-in stems for easy installation.



80/20 Black Cap	Plain Black Cap	Series	Color	Material	Finish	Process	A	B	C	Weight
2036	—	15	Black	ABS	Matte	Molded	.750"	1.500"	.125"	.006 lb
2037	—	15					.750"	3.000"	.125"	.010 lb
—	12305	20					20.00mm	20.00mm	2.50mm	.0009 kg
—	12306	20					20.00mm	40.00mm	2.50mm	.0021 kg
—	12307	20					40.00mm	40.00mm	2.50mm	.0041 kg
—	12271	30					30.00mm	30.00mm	4.00mm	.0038 kg
—	12302	30					30.00mm	60.00mm	4.00mm	.0034 kg
—	12303	30					60.00mm	60.00mm	4.00mm	.0154 kg
40-2035	40-2035-Plain	40					40.00mm	40.00mm	4.50mm	.0054 kg
—	12258	40					40.00mm	40.00mm	4.00mm	.0054 kg
—	12260	40					40.00mm	40.00mm	4.00mm	.0068 kg
—	12261	40					40.00mm	80.00mm	4.00mm	.0136 kg
—	12290	40					40.00mm	120.00mm	4.00mm	.0218 kg
—	12298	40					80.00mm	160.00mm	4.00mm	.0619 kg
—	12262	45					45.00mm	45.00mm	4.00mm	.0082 kg
—	12259	45					45.00mm	90.00mm	4.00mm	.0200 kg
—	12269	45					90.00mm	90.00mm	4.00mm	.0448 kg

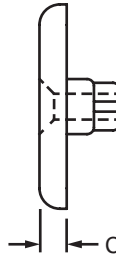
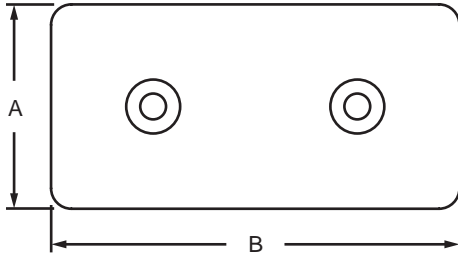


Black Cap	Series	Color	Material	Grade	Finish	Process	A	B	C	Weight
40-2037	40	Black	Nylon	PA6 GF30	Matte	Molded	40.00mm	30°	4.00mm	.0057 kg
40-2039	40						40.00mm	45°	4.00mm	.0084 kg
40-2043	40						40.00mm	60°	4.00mm	.0104 kg

Screw-On End Cap

Part Description:

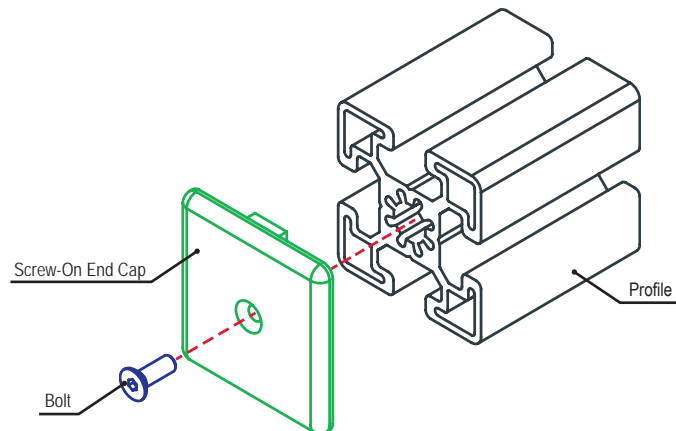
The screw-on end cap uses a flat head socket cap screw that spreads the pin to secure the end cap and does not require a profile end tap. It adds a finishing touch to your project and closes off profile ends to limit dust and debris buildup. The suggested hardware can be found below.



Black Cap	Series	Material	Grade	Finish	Process	A	B	C	Weight
12279	30	Nylon	PA6 GF30	Matte	Molded	30.00mm	60.00mm	4.00mm	.0073 kg
12283	45					45.00mm	45.00mm	4.00mm	.0088 kg
12286	45					45.00mm	90.00mm	4.00mm	.0174 kg
12287	45					90.00mm	90.00mm	4.00mm	.0345 kg

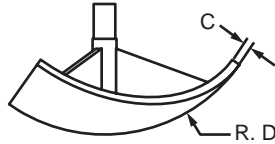
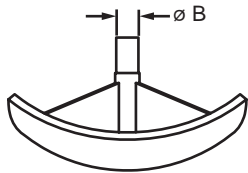
Suggested Hardware (Mount to Profile End)

Part No.	Series	Bolt	Qty.	Description
12279	30	11-4712	2	M4 x 12mm FHSCS
12283	45		1	
12286	45		2	
12287	45		4	

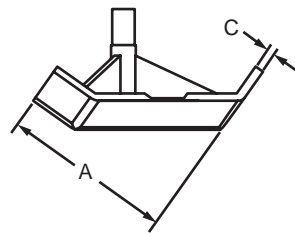
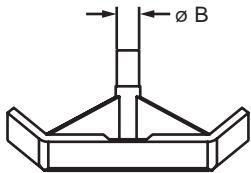


Part Description:

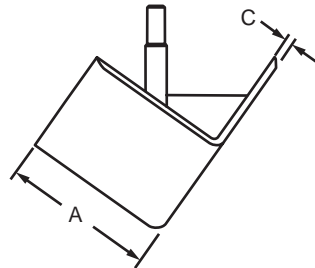
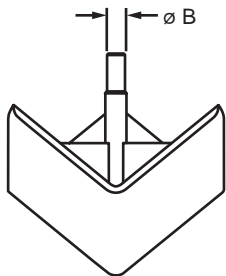
The 3 way – corner bracket cover cap is made of black nylon and used with the 3 way – triangular corner bracket (page 319) and the 3 way – rounded corner bracket (page 320) to add a layer of protection and an aesthetic appearance.



12043



12044, 12047



12041, 12045

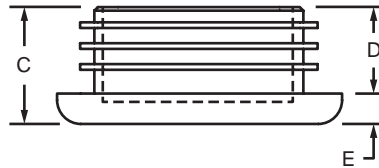
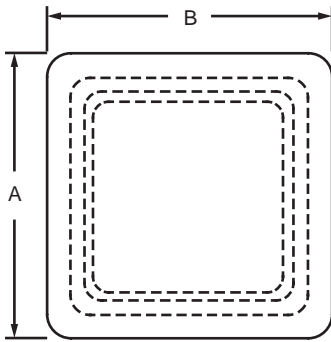


Black Cap	Series	Material	Color	Connector	Profile	A	B	C	D	Weight
12043	15	Nylon	Black	14113	1517-LS, 1517	—	.197"	.079"	28.6°	.021 lb
12044	15			14113	1547	1.490"	.197"	.079"	—	.030 lb
12041	30			14112	30-3030	30.00mm	4.20mm	2.00mm	—	.0086 kg
12047	40			14114	40-4045-Lite	40.00mm	5.00mm	2.00mm	—	.0077 kg
12045	40			14114	40mm X 40mm Profiles	40.00mm	5.00mm	2.00mm	—	.0154 kg

Ready Tube® End Cap / Quick Frame® End Cap

Ready Tube End Cap

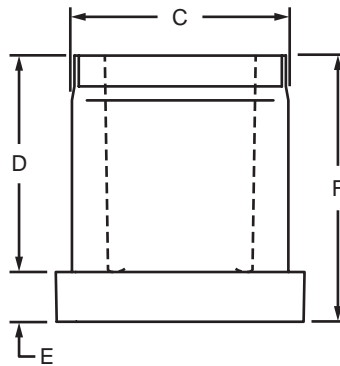
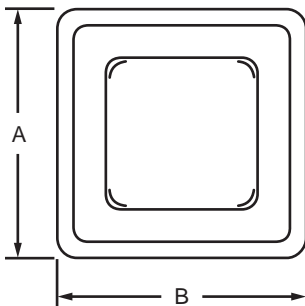
The Ready Tube® end cap adds a finishing touch to your project and closes off profile ends to limit dust and debris buildup. It has a molded push-in stem for easy installation.



80/20 Black Cap	Black Cap	Series	Material	Process	A	B	C	D	E	Weight
9755	9755-Plain	RT	Low Density Polyethylene	Injection Molded	1.500"	1.500"	.615"	.455"	.160"	.015 lb

Quick Frame End Cap

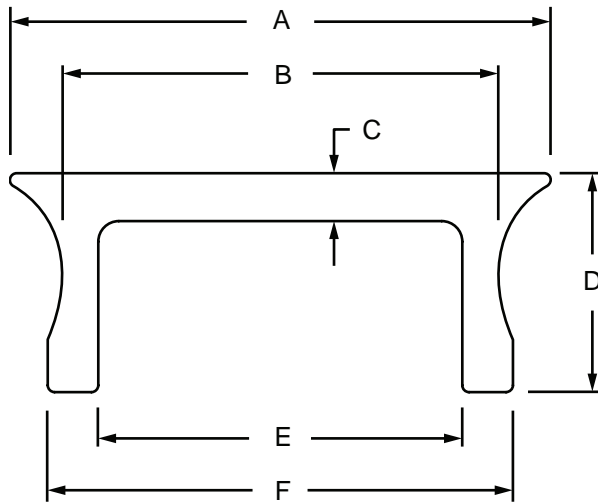
The Quick Frame® end cap adds a finishing touch to your project and closes off profile ends to limit dust and debris buildup. It is available in black or gray and pushes into Quick Frame profiles for easy installation.



Part No.	Series	Material	Grade	Process	Color	A	B	C	D	E	F	Weight
9110	QF	Plastic	Nylon	Injection Molded	Gray	1.000"	1.000"	.850"	.870"	.200"	1.070"	.020 lb
9210	QF				Black	1.000"	1.000"	.850"	.870"	.200"	1.070"	.020 lb

Part Description:

The aluminum T-slot cover is available in black or clear anodize for 15 and 40-series profiles. It prevents dust and debris build up, covers wires and tubes in the T-slot channel, and adds a great finishing touch that blends into projects for a polished look.



Part No.	Series	Color	A	B	C	D	E	F	Stock Length	Weight
2119	15	Clear	.395"	.319"	.035"	.160"	.266"	.340"	72.500"	.002 lb / in.
2119-Black	15	Black	.395"	.319"	.035"	.160"	.266"	.340"		.002 lb / in.
40-2119	40	Clear	10.02mm	8.11mm	.89mm	4.06mm	6.76mm	8.64mm	1841.50mm	.06758 kg / mm
40-2119-Black	40	Black	10.02mm	8.11mm	.89mm	4.06mm	6.76mm	8.64mm		.06758 kg / mm

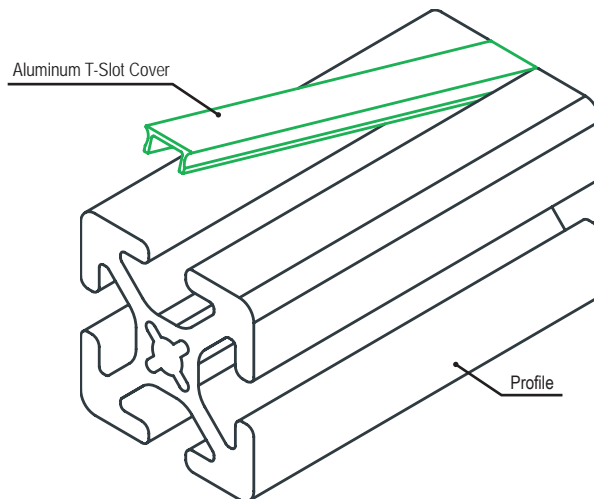
Material Specifications

Material	Alloy*	Finish	Process
Aluminum	6105-T5	Anodize	Extruded

* Or comparable

Required Machining Services

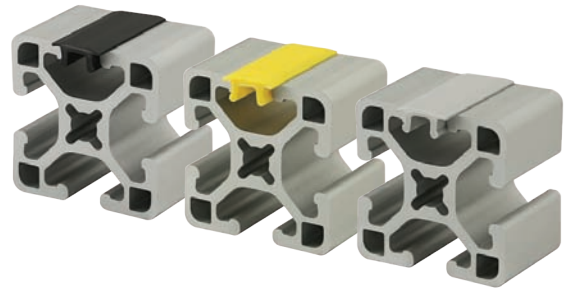
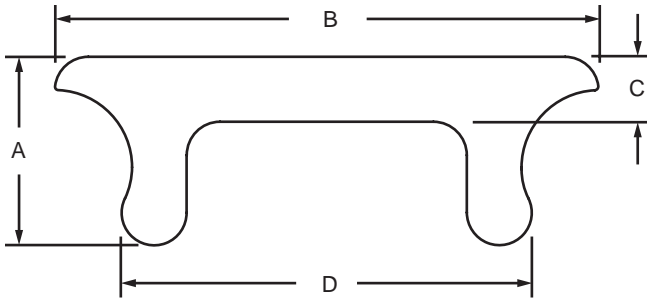
Machining Type	Part Machined	Reference Page
Cut to Length	T-slot Cover	860



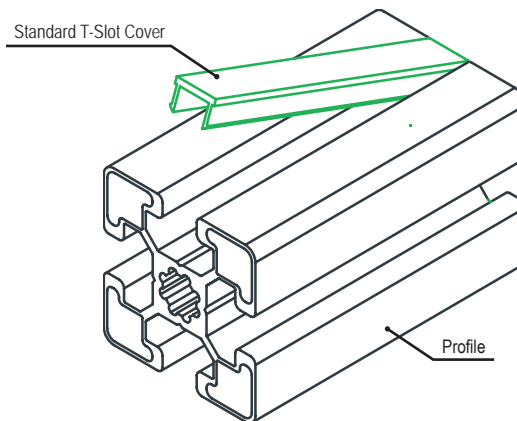
Standard T-Slot Cover

Part Description:

The standard T-slot cover is more rigid for heavy use applications. It adds a finishing touch and polished look to an application. It prevents dust and debris build up and covers wires and tubes in the T-slot channel. There are options available in black, gray, or safety yellow. **Tip:** Use a soft faced mallet (page 914) to tap the cover into the T-slot.

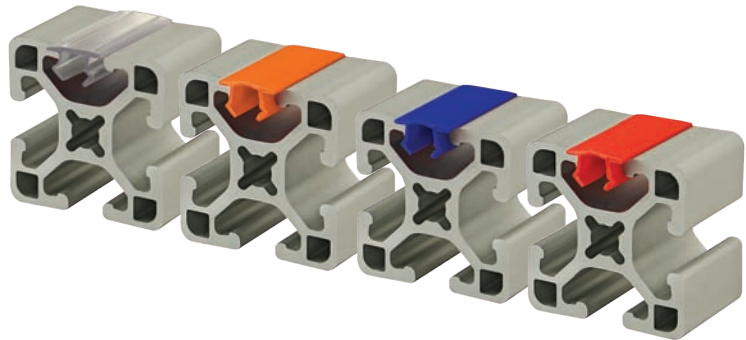
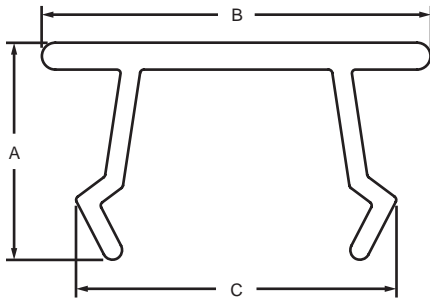


Part No.	Series	Color	Material	Finish	Process	A	B	C	D	Stock Length	Weight
2112	10	Yellow	PVC	Matte	Extruded	.102"	.338"	.035"	.266"	72.500"	.059 lb
2113	10	Black				.102"	.338"	.035"	.266"		.059 lb
2114	10	Gray				.102"	.338"	.035"	.266"		.059 lb
2109	15	Yellow	Polypropylene			.222"	.484"	.060"	.350"		.099 lb
2110	15	Black				.222"	.484"	.060"	.350"		.111 lb
2111	15	Gray				.222"	.484"	.060"	.350"		.106 lb
25-2112	25	Yellow	PVC			2.59mm	8.59mm	.89mm	6.76mm	1841.50mm	.0268 kg
25-2113	25	Black				2.59mm	8.59mm	.89mm	6.76mm		.0245 kg
25-2114	25	Gray				2.59mm	8.59mm	.89mm	6.76mm		.0268 kg
40-2109	40	Yellow	Polypropylene			5.64mm	12.29mm	1.52mm	8.89mm		.0481 kg
40-2110	40	Black				5.64mm	12.29mm	1.52mm	8.89mm		.0490 kg
40-2111	40	Gray				5.64mm	12.29mm	1.52mm	8.89mm		.0485 kg



Part Description:

The economy T-slot cover is a cost-effective way to add a finishing touch and polished look to an application. It prevents dust and debris build up and covers wires and tubes in the T-slot channel. There are options available in black, gray, clear, red, blue, orange, or safety yellow. **Tip:** Use a soft faced mallet (page 914) to tap the cover into the T-slot.



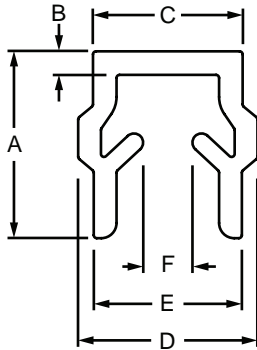
Part No.	Series	Color	Material	Finish	Process	A	B	C	Stock Length	Weight			
2819	10	Yellow	PVC	Matte	Extruded	.211"	.430"	.313"	72.500"	.080 lb			
2820	10	Black				.211"	.430"	.313"		.083 lb			
2821	10	Gray				.211"	.430"	.313"		.076 lb			
2818	10	Red				.211"	.430"	.313"		.098 lb			
2817	10	Blue				.211"	.430"	.313"		.080 lb			
2816	10	Orange				.211"	.430"	.313"		.091 lb			
2822	15	Yellow				.282"	.505"	.416"	.131 lb				
2823	15	Black				.282"	.505"	.416"	.133 lb				
2824	15	Gray				.282"	.505"	.416"	.126 lb				
2825	15	Red				.282"	.505"	.416"	.124 lb				
2826	15	Blue				.282"	.505"	.416"	.126 lb				
2827	15	Orange				.282"	.505"	.416"	.127 lb				
2871	15 40	Clear				.283"	.505"	.416"	.126 lb				
25-2819	25	Yellow				Polypropylene	Matte	Extruded	5.36mm	10.92mm	7.95mm	1841.50mm	.0354 kg
25-2820	25	Black							5.36mm	10.92mm	7.95mm		.0363 kg
25-2821	25	Gray	5.36mm	10.92mm	7.95mm				.0360 kg				
25-2818	25	Red	5.36mm	10.92mm	7.95mm				.0443 kg				
25-2817	25	Blue	5.36mm	10.92mm	7.95mm				.0386 kg				
25-2816	25	Orange	5.36mm	10.92mm	7.95mm				.0411 kg				
40-2822	40	Yellow	7.16mm	12.83mm	10.57mm				.0549 kg				
40-2823	40	Black	7.16mm	12.83mm	10.57mm				.0467 kg				
40-2824	40	Gray	7.16mm	12.83mm	10.57mm				.0521 kg				
40-2825	40	Red	7.16mm	12.83mm	10.57mm				.0544 kg				
40-2826	40	Blue	7.16mm	12.83mm	10.57mm				.0579 kg				
40-2827	40	Orange	7.16mm	12.83mm	10.57mm				.0602 kg				
14108	45	Yellow	7.37mm	11.61mm	11.58mm				2000.00mm	.0514 kg			
14107	45	Black	7.37mm	11.61mm	11.58mm					.0514 kg			
14110	45	Gray	7.37mm	11.61mm	11.58mm					.0514 kg			
14123	45	Red	7.37mm	11.61mm	11.58mm	.0514 kg							
14121	45	Blue	7.37mm	11.61mm	11.58mm	.0514 kg							

Reduction T-Slot Cover

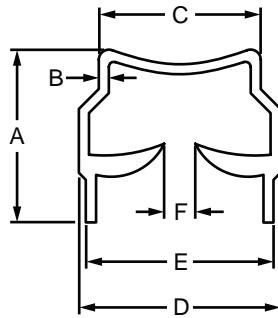
Part Description:

The reduction T-slot cover slopes inward to create a flat surface and adds a finishing look while preventing dust and debris build up. It covers wires and tubes in the T-slot channel. It can also be used as panel gasket.

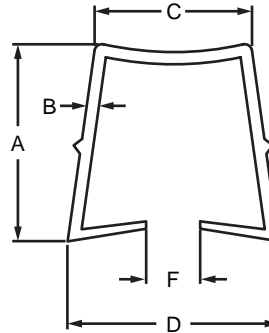
Tip: Use a soft faced mallet (page 914) to tap the cover into the T-slot.



12004



12003 & 14193



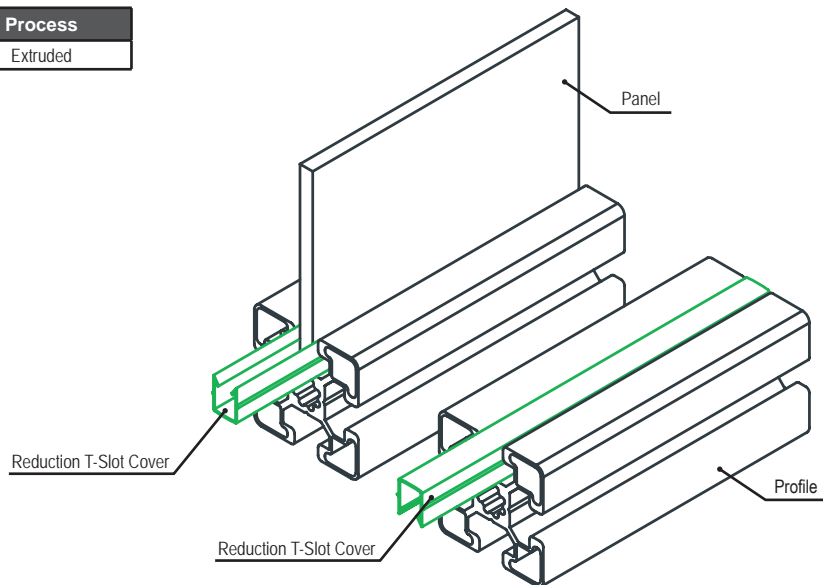
12013



Part No.	Series	Color	A	B	C	D	E	F	Stock Length	Gasket Panel Thickness	Weight
12004	20	Black	6.25mm	.79mm	5.00mm	6.00mm	4.95mm	1.65mm	2M	1 - 4mm	.0163 kg
12003	10 25		9.00mm	.60mm	6.10mm	7.30mm	6.40mm	.70mm		1 - 4mm	.0427 kg
14193	30		8.76mm	.51mm	8.20mm	10.21mm	9.50mm	1.57mm		4 - 6mm	.0358 kg
12013	45		12.80mm	.79mm	10.21mm	13.69mm	—	3.51mm		2 - 6mm	.0548 kg

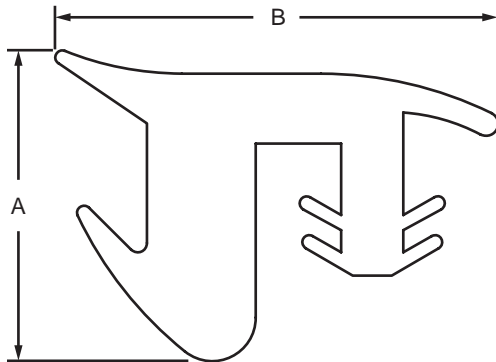
Material Specifications

Material	Finish	Process
Polypropylene	Matte	Extruded

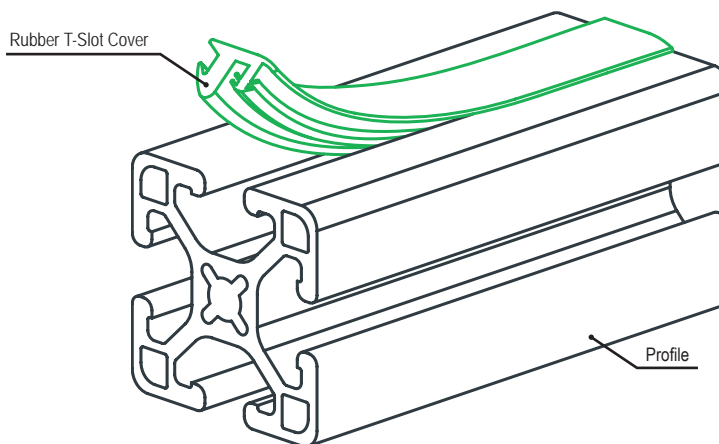


Part Description:

The rubber T-slot cover prevents dust and debris buildup, covers wires in the T-slot channel, and adds an extra layer of protection to applications. It rolls into the T-slot, making it easy to assemble.



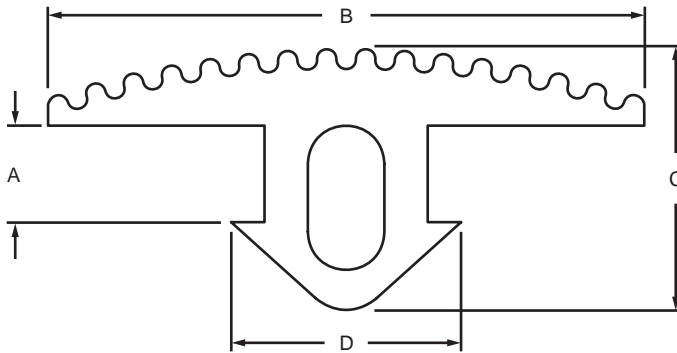
Part No.	Series	Material	Color	A	B	Length	Weight
2876	15	Rubber	Black	.400"	.570"	per foot	.042 lb / ft
2877	15			.400"	.570"	per 150 foot roll	6.315 lb
40-2876	40			10.16mm	14.48mm	per meter	.0637 kg / m
40-2877	40			10.16mm	14.48mm	per 45.7 meter roll	2.8654 kg



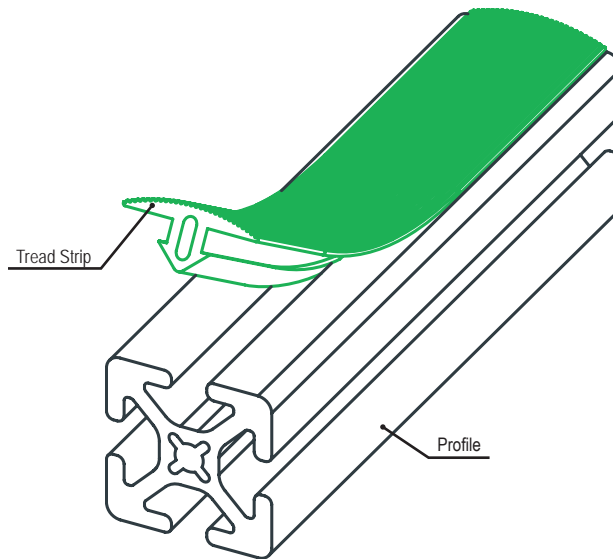
Tread Strip

Part Description:

The tread strip fits into a T-slot channel and provides an anti-slip ribbed surface. It has a key pad that presses into a T-slot and is commonly used for adding traction on steps or as padding for doors. Tread strip is sold by the foot or meter.

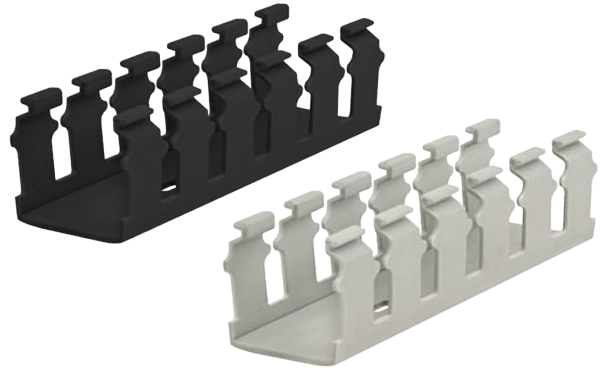
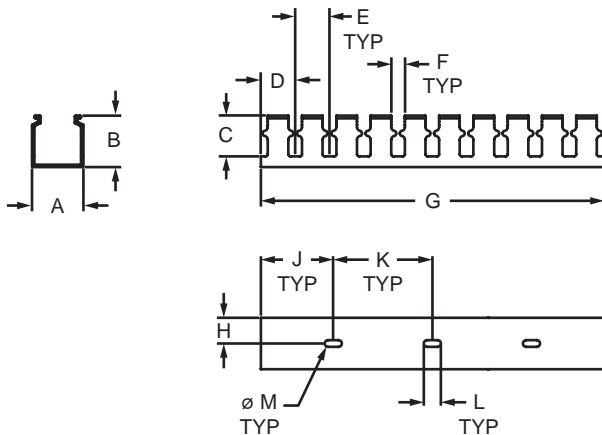


Part No.	Series	Material	Color	A	B	C	D	Max Length	Weight
2828	10	TPV	Black	.110"	.875"	.398"	.375"	150 Feet	.055 lb / ft
25-2828	25			2.79mm	22.23mm	10.11mm	9.53mm	45 Meters	.0819 kg / m
12006	15 40			5.03mm	31.09mm	13.59mm	11.99mm	20 Meters	.1255 kg / m



Part Description:

The wire housing is commonly used to organize wires, cables, and tubes. It can be integrated into new or existing applications. The housing makes it easy to place and remove wires simply by removing the wire housing cover (see page 800). It has breakaway fingers that snap off to accommodate large wire groupings. The wire housing is available in gray or black.

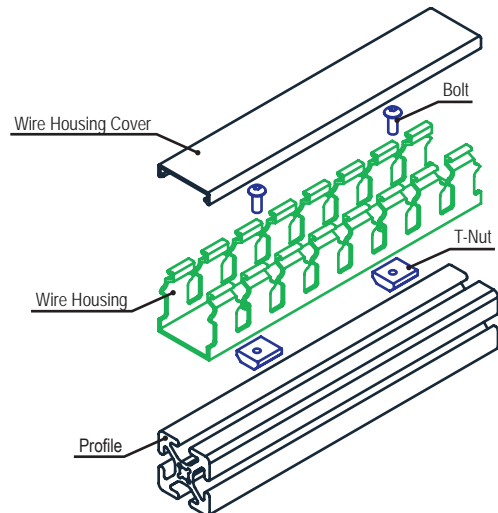


Part No.	Series	Material	Color	A	B	C	D	E	F	G	H	J	K	L	M	Weight
13197	10 15	PVC	Black	1.500"	1.502"	1.190"	1.000"	1.000"	.400"	72.000"	.750"	2.000"	4.000"	.500"	.195"	.885 lb
13199	25 30 40 45		Gray	1.500"	1.502"	1.190"	1.000"	1.000"	.400"	72.000"	.750"	2.000"	4.000"	.500"	.195"	.885 lb

Suggested Hardware (Mount to T-Slot)

Series	Part No.	Qty.*	Bolt	Part No.	Qty.*	T-Nut
10	3042	1	10-32 x .375" BHSCS	3205	1	Slide-in
15	3050	1	10-32 x .500" BHSCS	3201	1	Slide-in
25	11-5310	1	M5 x 10mm BHSCS	25-1954	1	Slide-in
30	11-5312	1	M5 x 12mm BHSCS	13115	1	Drop-in
40	11-5312	1	M5 x 12mm BHSCS	3871	1	Slide-in
45	11-5316	1	M5 x 16mm BHSCS	13127	1	Drop-in

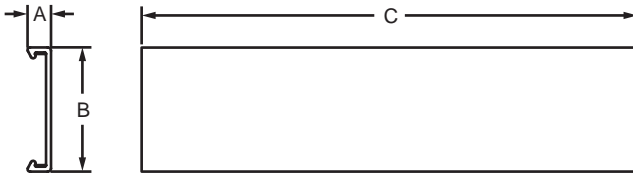
* Suggested hardware quantity is per hole. Stock length suggested quantity is 9, utilizing every other hole.



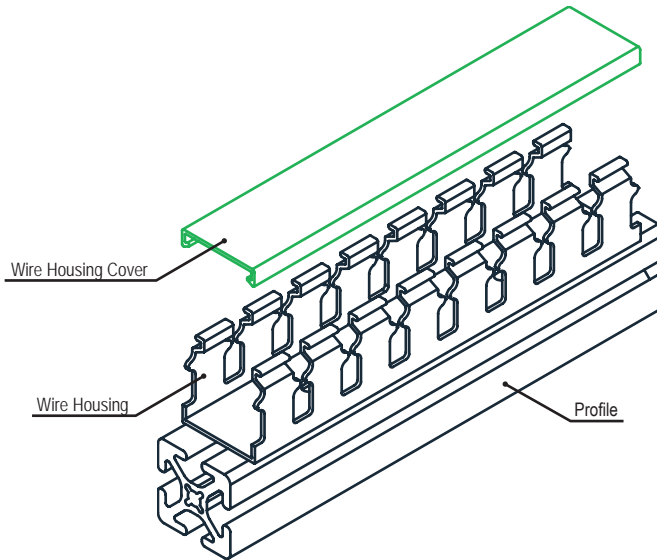
Wire Housing Cover

Part Description:

The wire housing cover is commonly used with the wire housing (see page 799) for wire and cable storage and organization. It keeps dirt and debris out while retaining wires in the housing. The wire housing cover is available in gray or black.

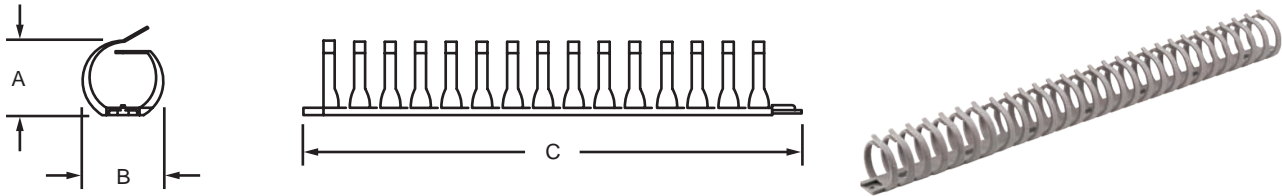


Part No.	Series	Material	Color	A	B	C	Weight
13198	10 15	Rigid PVD Flexible PVC	Black	.283"	1.500"	72.000"	.385 lb
13200	25 30 40 45		Gray	.283"	1.500"	72.000"	.385 lb



Part Description:

Wiring duct is commonly used to organize wires, cables, and tubes. It is reusable and easy to integrate into new or existing applications. The strips include overlapping fingers with no sharp edges that interlock for end-to-end attachment to enable easy access to wires with no need for a separate cover.



Part No.	Series	Material	Finish	Process	Color	A	B	C	Weight
2899	10 15	Plastic	Matte	Molded	Medium Gray	1.370"	1.320"	20.500"	.136 lb
65-2899	25 30 40 45					34.80mm	33.53mm	520.70mm	.0615 kg

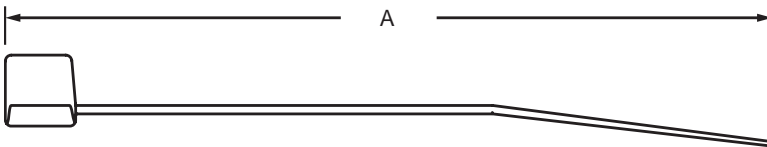
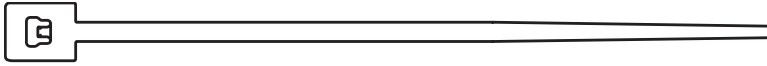
Suggested Hardware (Mount to T-Slot)

Part No.	Series	Qty.	Bolt	T-Nut
3426	10	4	10-32 x .375" BHSCS	Slide-In
3487	15	4	10-32 x .500" BHSCS	Slide-In
11-5310	25	4	M5 x 10mm BHSCS	—
25-1954		4	—	Slide-In
11-5312	30	4	M5 x 12mm BHSCS	—
13115		4	—	Drop-In
75-3539	40	4	M5 x 12mm BHSCS	Slide-In
11-5316	45	4	M5 x 16mm BHSCS	—
13127		4	—	Drop-In

Cable Tie

Part Description:

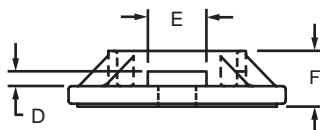
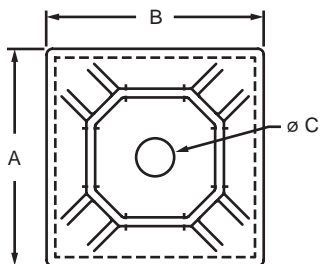
The cable tie is used to organize wires, cables, and tubes. It has a high tensile strength. Cable ties are sold in packages of 100.



Part No.	Series	Material	Finish	Process	Color	A	Weight
2890		Nylon	Matte	Molded	Black	6.000"	.001 lb
2891						8.000"	.001 lb
2892						11.000"	.004 lb

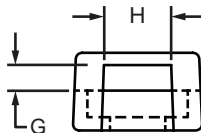
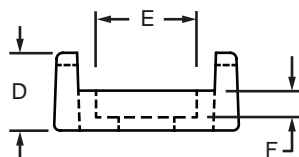
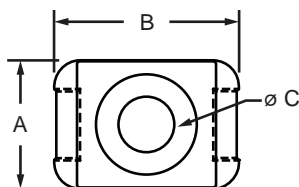
Part Description:

The cable tie mounting pad is used to mount cable ties (page 802) for wire and cable management and organization. There are options available with a self-adhesive backing. All cable tie mounting pads are sold in packs of 100.



Part No.	Series	Material	Finish	Process	Color	A	B	C	D	E	F	Weight
2893*	10 15 20 25 30 40 45	Nylon	Matte	Molded	Black	.740"	.740"	.130"	.050"	.200"	.190"	.002 lb
2894*	10 15 25 30 40 45					.990"	.990"	.215"	.060"	.200"	.200"	.003 lb

* Includes a self-adhesive backing.



Part No.	Series	Material	Finish	Process	Color	A	B	C	D	E	F	G	H	Weight
2895	10 15 25 30 40 45	Nylon	Matte	Molded	Black	.628"	.898"	.270"	.380"	.490"	.130"	.125"	.328"	.003 lb

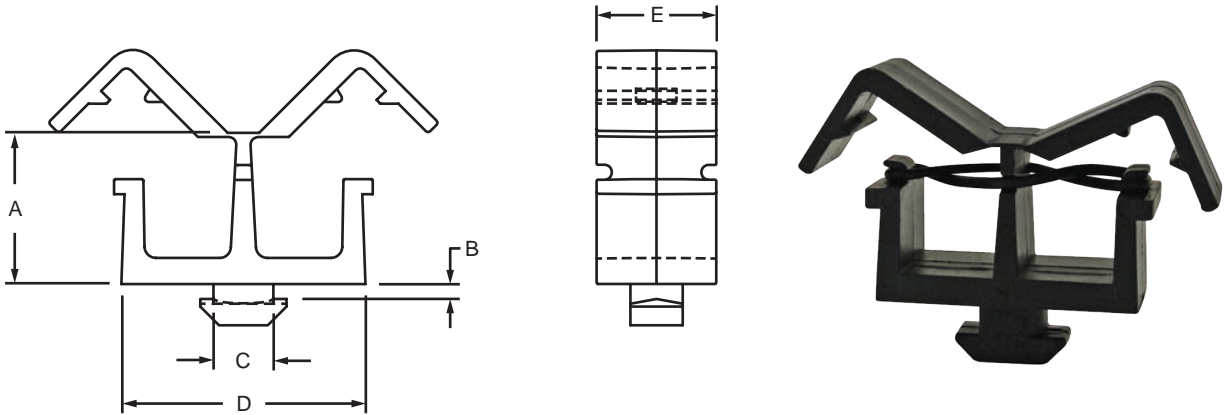
Suggested Hardware (Mount to T-Slot)

Series	Part No.	Qty.	Bolt	Part No.	Qty.	T-Nut
10 25	3059	1	1/4-20 x 3/8" BHSCS	3382	1	Slide-In Economy
15	3061	1	1/4-20 x 1/2" BHSCS	3382	1	Slide-In Economy
30	11-6310	1	M6 x 10mm BHSCS	13117	1	M6 Drop-In
40	11-6310	1	M6 x 10mm BHSCS	13119	1	M6 Drop-In
45	11-6314	1	M6 x 14mm BHSCS	13129	1	M6 Drop-In

Drop-In Cable & Tube Clip

Part Description:

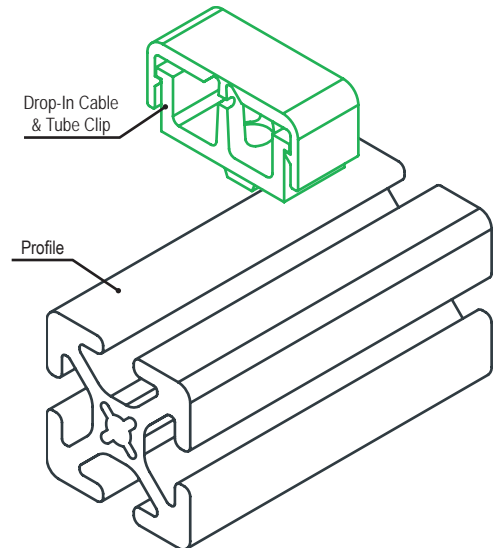
The drop-in cable and tube clip is used to organize cables, wires, and tubes without the need for cable ties. It is a reusable option that has a snap cover which adds an extra layer of protection and can be opened and closed repeatedly. The pad key allows it to easily drop into a T-slot channel even when ends are closed off. The drop-in cable and tube clip twists into the T-slot to lock in place.



Part No.	Series	A	B	C	D	E	Weight
12321	30	20.20mm	2.00mm	8.00mm	32.33mm	16.00mm	.0066 kg
12319	15 40	20.20mm	4.50mm	8.00mm	32.33mm	16.00mm	.0077 kg
12320	45	20.20mm	8.00mm	10.00mm	32.33mm	16.00mm	.0064 kg

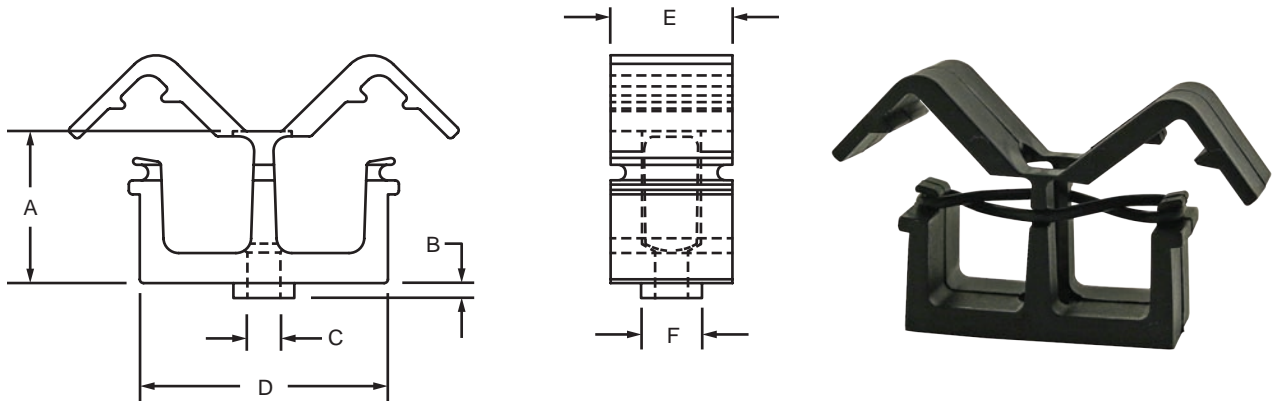
Material Specifications

Material	Grade	Finish	Process	Color
Nylon	PA6 GF30	Matte	Molded	Black



Part Description:

The cable and tube clip is used to organize cables, wires, and tubes without the need for cable ties. It is a reusable option that has a snap cover which adds an extra layer of protection and can be opened and closed repeatedly. The cable clip mounts to a T-slot profile; see the suggested hardware below.



Part No.	Series	A	B	C	D	E	F	Weight
12026	15 30 40	20.20mm	2.00mm	4.30mm	32.60mm	16.00mm	8.00mm	.0100 kg
12027	45	20.20mm	2.00mm	4.30mm	32.60mm	16.00mm	10.00mm	.0077 kg

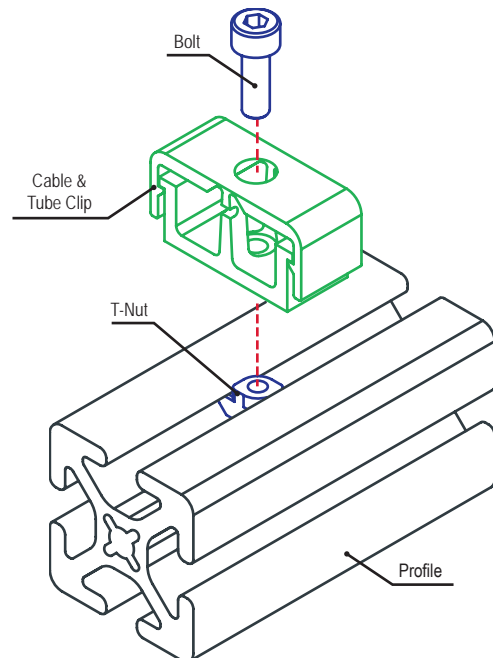
Material Specifications

Material	Grade	Finish	Process	Color
Nylon	PA6 GF30	Matte	Molded	Black

Suggested Hardware (Mount to T-Slot)

Part No.	Series	Qty.	Bolt	T-Nut
11-4512*	15 30 40	1	M4 x 12mm SHCS	—
13113*		1	—	Drop-In
75-3563	45	1	M4 x 12mm SHCS	Drop-In

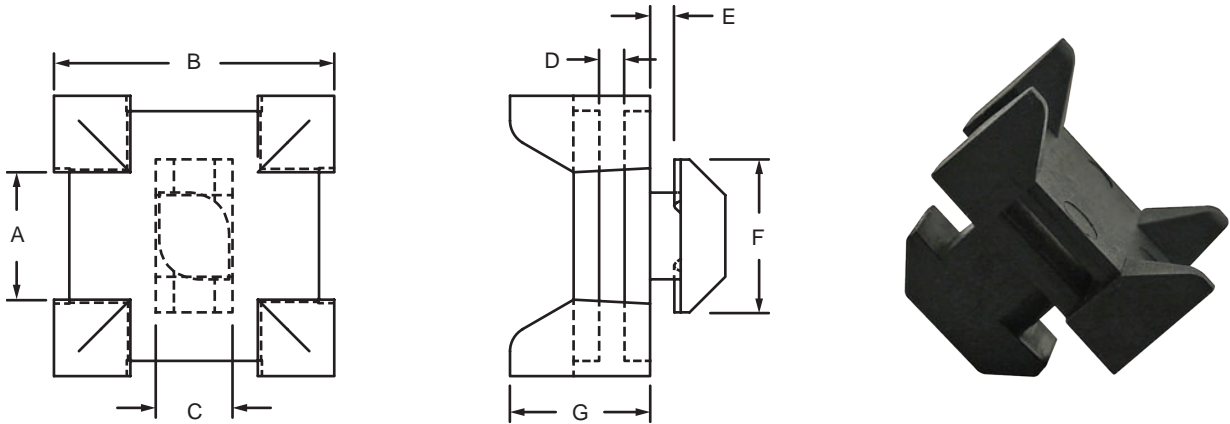
*15, 30, and 40 series suggested hardware includes both part number 11-4512 & 13113.



Cable Tie Mounting Block

Part Description:

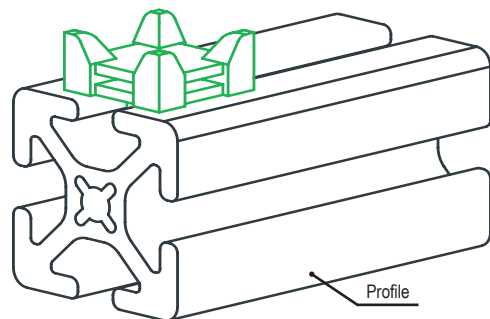
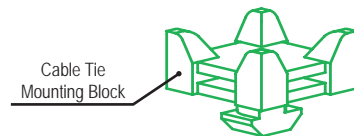
The cable tie mounting block is used to organize cables, wires, and tubes. It is a reusable option that allows cable ties to be attached in two directions. The pad key allows it to easily drop into a T-slot channel even when ends are closed off. The cable tie mounting block twists into the T-slot to lock in place.



Part No.	Series	A	B	C	D	E	F	G	Weight
12314	10 25	10.00mm	22.00mm	6.00mm	2.00mm	1.90mm	12.00mm	11.00mm	.0036 kg
12317	30	10.00mm	22.00mm	7.00mm	2.00mm	2.54mm	14.00mm	11.00mm	.0036 kg
12316	15 40	10.00mm	22.00mm	8.00mm	2.00mm	4.29mm	16.00mm	11.00mm	.0045 kg
12315	45	10.00mm	22.00mm	10.00mm	2.00mm	5.80mm	18.00mm	11.00mm	.0044 kg

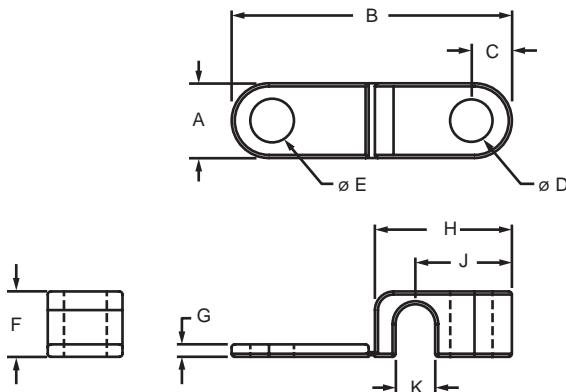
Material Specifications

Material	Grade	Finish	Process	Color
Nylon	PA6 GF30	Matte	Molded	Black



Part Description:

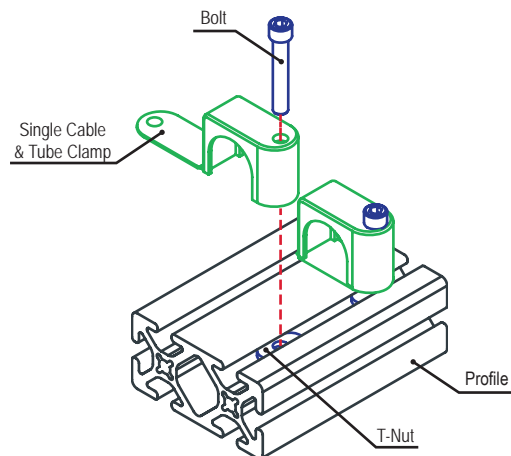
The single cable and tube clamp has one clamp channel to organize a tube, wire, or cable and attaches easily to a T-slot profile. It is made of black polypropylene which is durable, long-lasting, and resists oil, chemicals, and acids, making it ideal in industrial settings. The stackable design provides a space-saving method to organize multiple wires.



Part No.	Series	Material	Finish	Process	A	B	C	D	E	F	G	H	J	K	Weight
2500	10 15	Polypropylene	Black Matte	Molded	.472"	1.772"	.256"	.268"	.276"	.413"	.079"	.866"	.610"	.126"	.004 lb
2501	10 15				.472"	1.772"	.256"	.268"	.276"	.413"	.079"	.866"	.610"	.250"	.003 lb
2502	10 15				.630"	2.165"	.276"	.268"	.276"	.591"	.079"	1.063"	.709"	.374"	.007 lb
2503	10 15				.787"	2.717"	.276"	.268"	.276"	.886"	.079"	1.339"	.866"	.500"	.015 lb
2504	10 15				.787"	3.346"	.276"	.268"	.276"	1.181"	.079"	1.654"	1.024"	.748"	.022 lb
2505	10 15				.787"	3.346"	.276"	.268"	.276"	1.181"	.079"	1.654"	1.024"	1.000"	.021 lb
65-2500	25 40				12.00mm	45.00mm	6.50mm	6.80mm	7.00mm	10.50mm	2.00mm	22.00mm	15.50mm	3.20mm	.0017 kg
65-2501	25 40				12.00mm	45.00mm	6.50mm	6.80mm	7.00mm	10.50mm	2.00mm	22.00mm	15.50mm	6.35mm	.0015 kg
65-2502	25 40				16.00mm	55.00mm	7.00mm	6.80mm	7.00mm	15.00mm	2.00mm	27.00mm	18.00mm	9.50mm	.0033 kg
65-2503	25 40				20.00mm	69.00mm	7.00mm	6.80mm	7.00mm	22.50mm	2.00mm	34.00mm	22.00mm	12.70mm	.0068 kg
65-2504	25 40				20.00mm	85.00mm	7.00mm	6.80mm	7.00mm	30.00mm	2.00mm	42.00mm	26.00mm	19.00mm	.0099 kg
65-2505	25 40	20.00mm	85.00mm	7.00mm	6.80mm	7.00mm	30.00mm	2.00mm	42.00mm	26.00mm	25.40mm	.0091 kg			

Suggested Hardware (Mount to T-Slot)

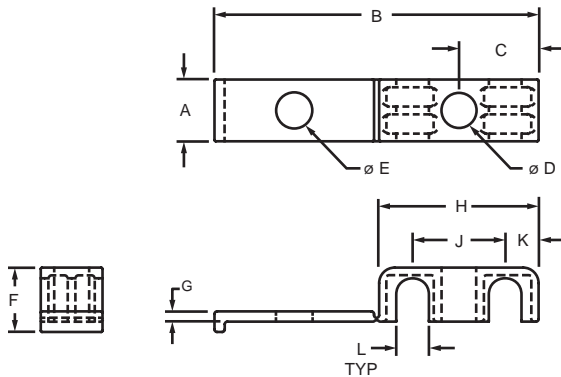
Part No.	Bolt Assy.	Qty.	Bolt	T-Nut
2500	3304	1	1/4-20 x 3/4" SHCS	Economy
2501	3304	1	1/4-20 x 3/4" SHCS	
2502	3306	1	1/4-20 x 1.0" SHCS	
2503	3307	1	1/4-20 x 1.25" SHCS	
2504	3308	1	1/4-20 x 1.50" SHCS	
2505	3308	1	1/4-20 x 1.50" SHCS	
65-2500	75-3414	1	M6 x 20mm SHCS	
65-2501	75-3415	1	M6 x 25mm SHCS	
65-2502	75-3415	1	M6 x 25mm SHCS	
65-2503	75-3416	1	M6 x 30mm SHCS	
65-2504	75-3418	1	M6 x 40mm SHCS	
65-2505	75-3418	1	M6 x 40mm SHCS	



Double Cable & Tube Clamp

Part Description:

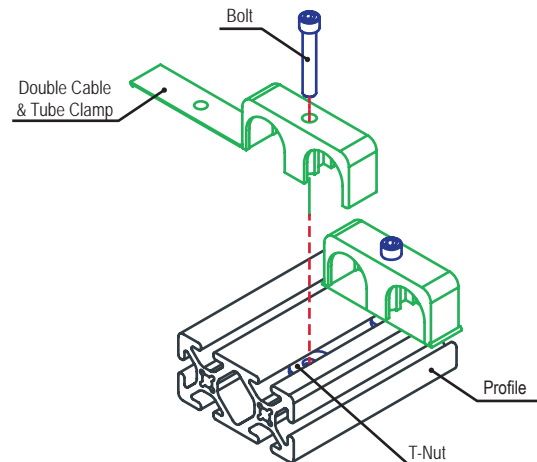
The double cable and tube clamp has two clamp channels to organize tubes, wires, and cables and attaches easily to a T-slot profile. It is made of black polypropylene which is durable, long-lasting, and resists oil, chemicals, and acids, making it ideal in industrial settings. The stackable design provides a space-saving method to organize multiple wires.



Part No.	Series	Material	Finish	Process	A	B	C	D	E	F	G	H	J	K	L	Weight
2506	10 15	Polypropylene	Black Matte	Molded	.472"	2.480"	.610"	.268"	.276"	.413"	.079"	1.220"	.709"	.256"	.126"	.005 lb
2507	10 15				.472"	2.480"	.610"	.268"	.276"	.413"	.079"	1.220"	.709"	.256"	.250"	.005 lb
2508	10 15				.630"	3.110"	.768"	.268"	.276"	.591"	.079"	1.535"	.866"	.335"	.374"	.009 lb
2509	10 15				.787"	4.213"	1.043"	.268"	.276"	.886"	.079"	2.087"	1.181"	.453"	.500"	.022 lb
2510	10 15				.787"	5.551"	1.378"	.268"	.276"	1.181"	.079"	2.756"	1.496"	.630"	.748"	.034 lb
2511	10 15				.787"	5.551"	1.378"	.268"	.276"	1.181"	.079"	2.756"	1.496"	.630"	1.000"	.026 lb
65-2506	25 40				12.00mm	63.00mm	15.50mm	6.80mm	7.00mm	10.50mm	2.00mm	31.00mm	18.00mm	6.50mm	3.20mm	.0024 kg
65-2507	25 40				12.00mm	63.00mm	15.50mm	6.80mm	7.00mm	10.50mm	2.00mm	31.00mm	18.00mm	6.50mm	6.35mm	.0023 kg
65-2508	25 40				16.00mm	79.00mm	19.50mm	6.80mm	7.00mm	15.00mm	2.00mm	39.00mm	22.00mm	8.50mm	9.50mm	.0043 kg
65-2509	25 40				20.00mm	107.00mm	26.50mm	6.80mm	7.00mm	22.50mm	2.00mm	53.00mm	30.00mm	11.50mm	12.70mm	.0099 kg
65-2510	25 40				20.00mm	141.00mm	35.00mm	6.80mm	7.00mm	30.00mm	2.00mm	70.00mm	38.00mm	16.00mm	19.00mm	.0154 kg
65-2511	25 40	20.00mm	141.00mm	35.00mm	6.80mm	7.00mm	30.00mm	2.00mm	70.00mm	38.00mm	16.00mm	25.40mm	.0117 kg			

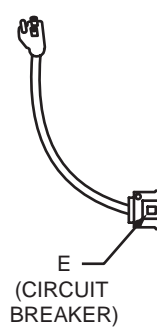
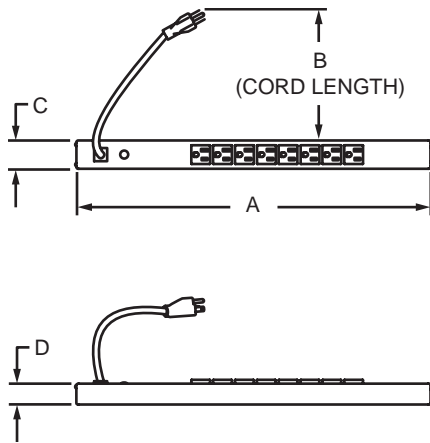
Suggested Hardware (Mount to T-Slot)

Part No.	Bolt Assy.	Qty.	Bolt	T-Nut
2506	3304	1	1/4-20 x 3/4" SHCS	Economy
2507	3305	1	1/4-20 x 7/8" SHCS	
2508	3306	1	1/4-20 x 1.0" SHCS	
2509	3307	1	1/4-20 x 1.25" SHCS	
2510	3308	1	1/4-20 x 1.50" SHCS	
2511	3308	1	1/4-20 x 1.50" SHCS	
65-2506	75-3414	1	M6 x 20mm SHCS	
65-2507	75-3414	1	M6 x 20mm SHCS	
65-2508	75-3415	1	M6 x 25mm SHCS	
65-2509	75-3416	1	M6 x 30mm SHCS	
65-2510	75-3418	1	M6 x 40mm SHCS	
65-2511	75-3418	1	M6 x 40mm SHCS	

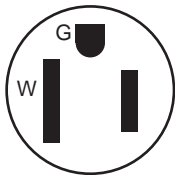


Part Description:

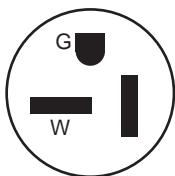
The Wiremold® power strip is ideal for applications that require power to many devices and is commonly used in laboratory and factory environments, offices, rack-mount applications, workbenches, and industrial solutions. It is housed in a durable, mountable encasement that allows for both vertical and horizontal installation. There are options available with 15 or 20-amps as well as a selection with a built-in circuit breaker that prevents dangerous overloads. The mounting clips and hardware to mount to a T-slot profile are included and there is no machining required.



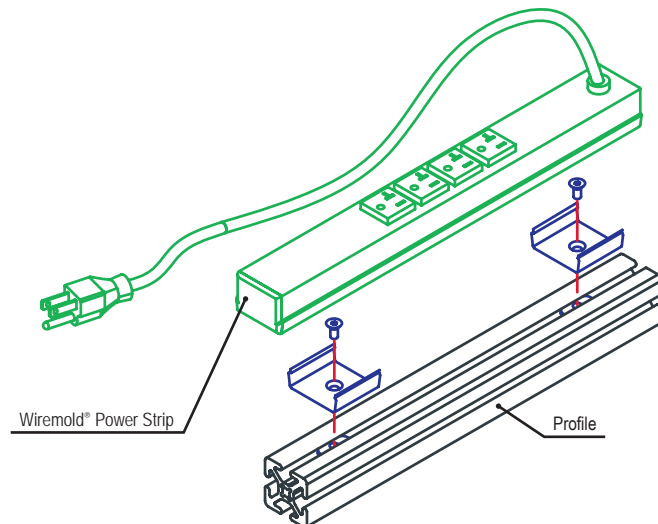
Part No.	Series	A	B	C	D	E	Surge Protection	Weight
2676	10 15 25 30 40	20.000"	6 ft	1.500"	1.190"	15 amp	NO	1.751 lb
2670	10 15 25 30 40	13.000"	6 ft	1.500"	1.190"	20 amp	NO	1.761 lb
2674	10 15 25 30 40	20.000"	6 ft	1.500"	1.190"	20 amp	YES	2.178 lb
2673	10 15 25 30 40	20.000"	15 ft	1.500"	1.190"	20 amp	NO	3.329 lb
2675	10 15 25 30 40	20.000"	15 ft	1.500"	1.190"	20 amp	YES	3.905 lb



**15 Amp
Straight Blade**



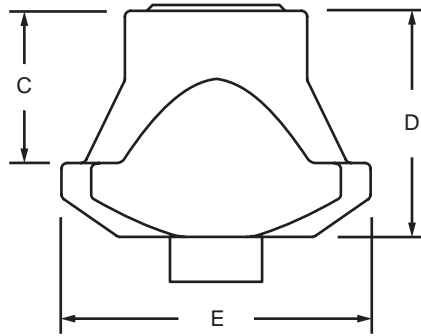
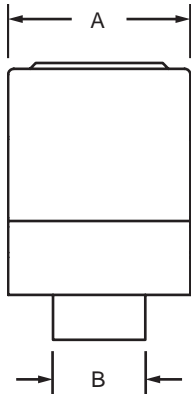
**20 Amp
Straight Blade**



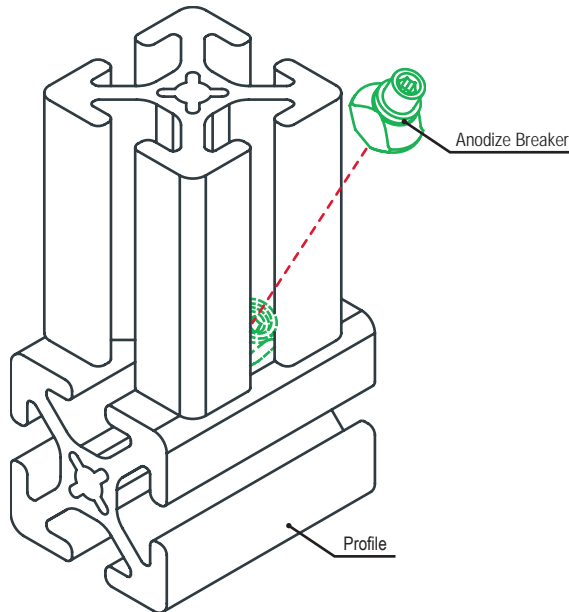
Anodize Breaker

Part Description:

The anodize breaker is made of zinc-plated steel which penetrates anodize to provide a grounded application. It twists into a T-slot then tilts at a 45 degree angle. The set screw connects to the seam of the mating profile. The anodize breaker is available for 15 and 40 series profiles. **Additional Information:** This requires a 3.00mm ball end wrench; see the Tool section beginning on page 907 for options.

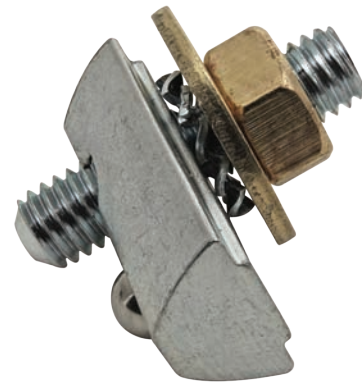
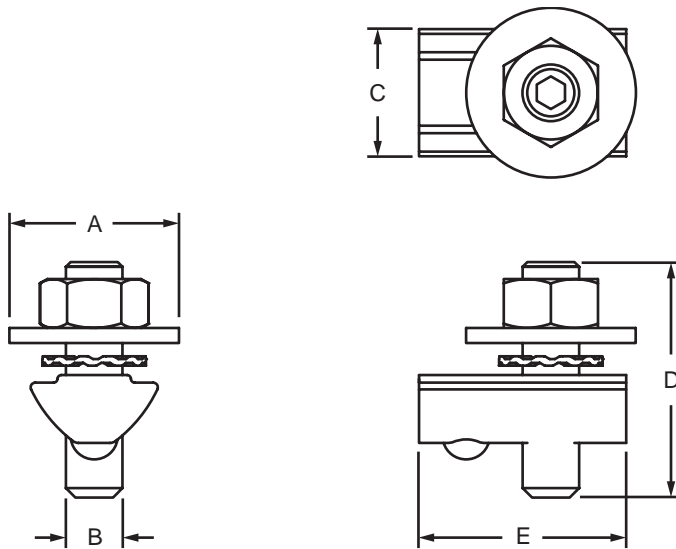


Part No.	Series	Material	Grade	Finish	A	B	C	D	E	Weight
12328	15 40	Steel	C35	Bright Zinc	.311"	.157"	.260"	.386"	.528"	.009 lb



Part Description:

The grounding terminal is made of zinc-plated steel and creates a conductive electrical connection to T-slotted profiles. It is frequently used in applications such as electronics assembly where electrostatic charges must be avoided. All hardware is included. **Additional Information:** The thread rod is an M6 thread and can be adjusted using a 3.00mm ball end wrench. See the Tool section beginning on page 907 for options.

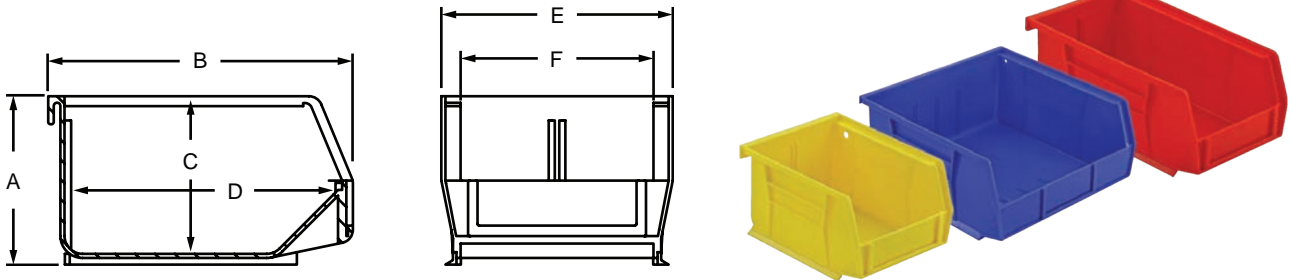


Part No.	Series	Material	Finish	Process	A	B	C	D	E	Weight
12300	15 40	Steel / Brass	Bright Zinc	Assembled	.709"	.236"	.531"	.984"	.866"	.041 lb

Storage Bin

Part Description:

The storage bin is made of polypropylene plastic that is durable yet lightweight, perfect for customized storage systems. There are options available in red, blue, or yellow to assist with organization and there are six sizes to choose from. Bins hang from an aluminum container hanger that mounts to the T-slot profile. The storage bin hanger is sold separately (page 813).



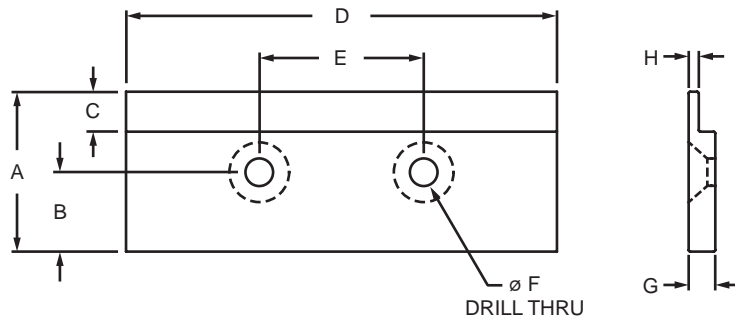
Red Bin	Blue Bin	Yellow Bin	Series	A	B	C	D	E	F	Weight
2230-RED	2230-BLU	2230-YEL	10 15	3.000"	5.375"	2.813"	4.750"	4.125"	3.438"	.156 lb
2240-RED	2240-BLU	2240-YEL	10 15	3.000"	7.375"	2.813"	6.711"	4.125"	3.438"	.232 lb
2250-RED	2250-BLU	2250-YEL	10 15	5.000"	10.875"	4.750"	10.250"	5.500"	4.375"	.644 lb
2270-RED	2270-BLU	2270-YEL	10 15	5.000"	10.875"	4.750"	10.250"	11.000"	10.000"	.984 lb
2272-RED	2272-BLU	2272-YEL	10 15	7.000"	14.750"	6.750"	14.000"	8.250"	6.563"	1.338 lb
65-2230-RED	65-2230-BLU	65-2230-YEL	25 40	76.20mm	136.53mm	71.45mm	120.65mm	104.78mm	87.33mm	.0708 kg
65-2240-RED	65-2240-BLU	65-2240-YEL	25 40	76.20mm	187.33mm	71.45mm	170.45mm	104.78mm	87.33mm	.1030 kg
65-2250-RED	65-2250-BLU	65-2250-YEL	25 40	127.00mm	276.23mm	120.65mm	260.35mm	139.70mm	111.13mm	.2083 kg
65-2270-RED	65-2270-BLU	65-2270-YEL	25 40	127.00mm	276.23mm	120.65mm	260.35mm	279.40mm	254.00mm	.4327 kg
65-2272-RED	65-2272-BLU	65-2272-YEL	25 40	177.80mm	374.65mm	171.45mm	355.60mm	209.55mm	166.70mm	.6069 kg

Material Specifications

Material	Finish	Process
Plastic	Gloss	Molded

Part Description:

The storage bin hanger is made from aluminum and is used to mount a storage bin to an application. All mounting hardware is included. **Additional Information:** For a custom length hanger, see the storage bin hanger profile on page 854.



Part No.	Series	Color	A	B	C	D	E	F	G	H	Weight
2264	10 15	Clear	1.500"	.745"	.375"	6.000"	3.500"	1/4-20	.250"	.100"	.236 lb
2264-Black	10 15	Black	1.500"	.745"	.375"	6.000"	3.500"	1/4-20	.250"	.100"	.236 lb
2265	10 15	Clear	1.500"	.745"	.375"	12.000"	4.000"	1/4-20	.250"	.100"	.444 lb
2265-Black	10 15	Black	1.500"	.745"	.375"	12.000"	4.000"	1/4-20	.250"	.100"	.444 lb
65-2264	25 30 40 45	Clear	38.10mm	18.92mm	9.53mm	160.00mm	88.90mm	1/4-20	6.35mm	2.54mm	.1081 kg
65-2264-Black	25 30 40 45	Black	38.10mm	18.92mm	9.53mm	160.00mm	88.90mm	1/4-20	6.35mm	2.54mm	.1081 kg
65-2265	25 30 40 45	Clear	38.10mm	18.92mm	9.53mm	320.00mm	101.60mm	1/4-20	6.35mm	2.54mm	.2083 kg
65-2265-Black	25 30 40 45	Black	38.10mm	18.92mm	9.53mm	320.00mm	101.60mm	1/4-20	6.35mm	2.54mm	.2083 kg

Material Specifications

Material	Alloy*	Finish	Process
Aluminum	6105-T5	Anodize	Machined

* Or comparable

Included Hardware (Mount to T-Slot)

Part No.	Bolt	Qty.	Bolt	Qty.	T-Nut	Qty.
2264	3400	2	3405	2	3382	2
2264-Black	3400	2	3405	2	3382	2
65-2264	13-6712	2	13-6716	2	3859	2
65-2264-Black	13-6712	2	13-6716	2	3859	2

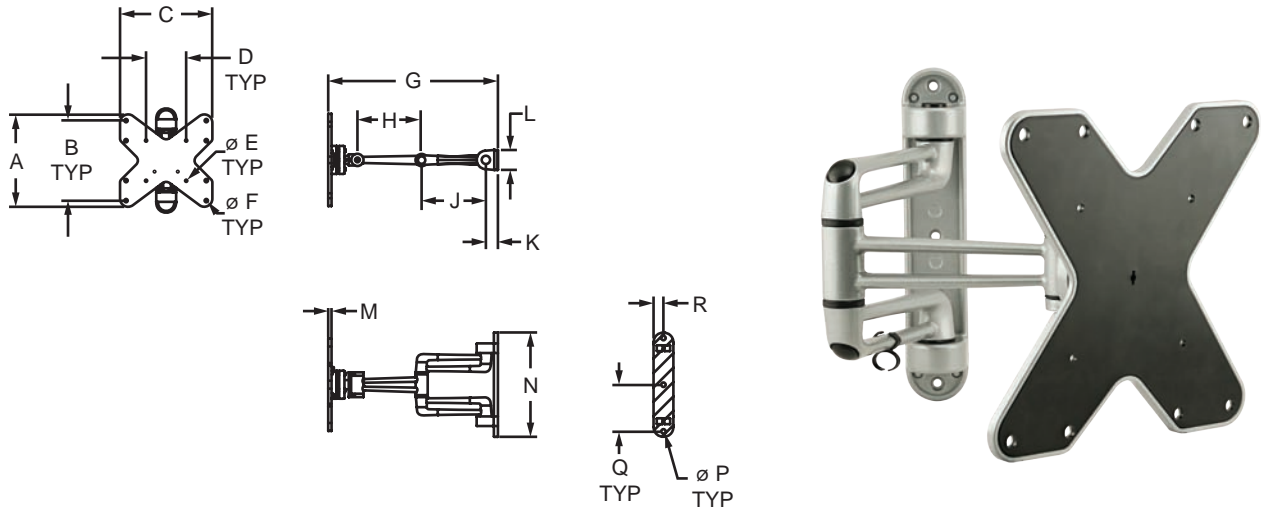
For parts 2265, 2265-Black, 65-2265, and 65-2265-Black the included quantity is 3.

Heavy-Duty Monitor Mount

Part Description:

The heavy duty monitor mount aids ergonomic initiatives and keeps the monitor off the work surface. It is compatible with the Video Electronics Standards Association (VESA) mounting patterns of 100x100, 200x100, or 200x200, which includes most 23" to 42" displays. The mount supports adjustments in three dimensions; it can rotate 360 degrees, tilt ranging from 15 degrees upward to 15 degrees downward, and swivel ± 90 degrees. Additionally, it can be extended from the mounting surface a minimum distance of 3.82 inches (97mm) to a maximum of 16.65 inches (423mm). The mount can safely hold up to 44 pounds (20 kg).

FINISH YOUR FRAME



Part No.	Series	A	B	C	D	E	F	G	H	
2285	15 40 45	9.075" (230.50mm)	7.874" (200.00mm)	9.055" (230.00mm)	3.937" (100.00mm)	.213" (5.41mm)	.331" (8.41mm)	16.654" (423.01mm)	6.299" (160.00mm)	
		J	K	L	M	N	P	Q	R	Weight
2285		6.299" (160.00mm)	1.181" (30.00mm)	1.950" (49.53mm)	.331" (8.41mm)	10.236" (260.00mm)	.236" (6.00mm)	4.579" (116.31mm)	.974" (24.74mm)	4.467 lb (2.0262 kg)

Material Specifications

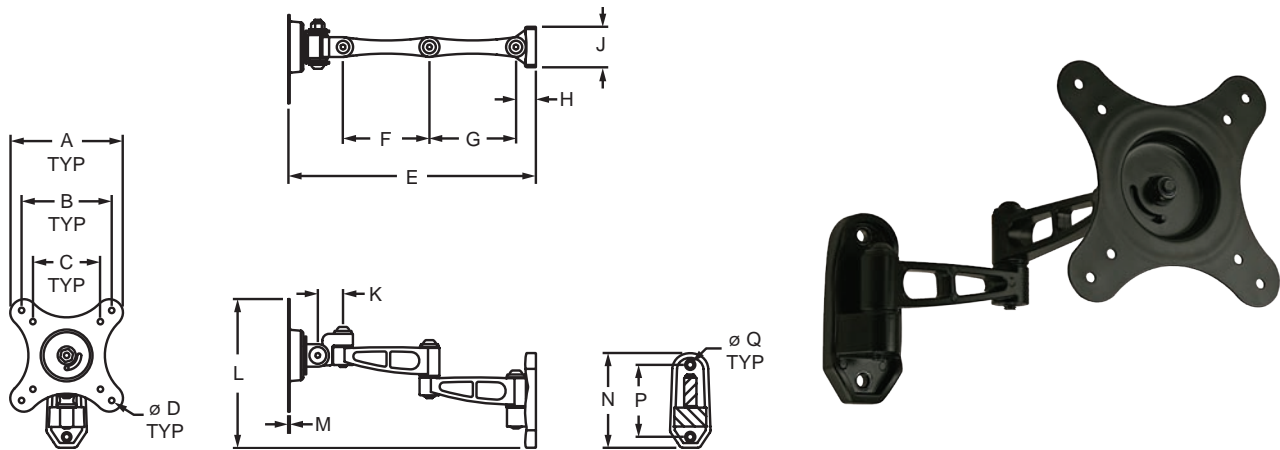
Material	Finish	Color
Zinc	Powder Coat	Aluminum Silver

Suggested Hardware (Mount to T-Slot)

Series	Part No.	Qty.	Bolt	Part No.	Qty.	T-Nut
15	13-6316	3	M6 x 16mm BHSCS	3836	3	Slide-in
40	13-6316	3	M6 x 16mm BHSCS	40-1961	3	Slide-in
45	13-6316	3	M6 x 16mm BHSCS	13130	3	Drop-in

Part Description:

The adjustable monitor mount aids ergonomic initiatives and keeps the monitor off of the work surface. It is compatible with the Video Electronics Standards Association (VESA) mounting patterns of 75x75 and 100x100, which includes most 10 to 24-inch displays. The mount supports adjustments in four dimensions; it can be swiveled ± 90 degrees, tilted ranging from 45 degrees upward to 45 degrees downward, and rotated 90 degrees. Additionally, it can be extended from the mounting surface a minimum distance of 3.1 inches (78.74mm) to a maximum of 11.0 inches (279.4mm). The mount can safely hold up to 30 pounds (13.61kg), including the weight of the mount itself.



Part No.	Series	Material	Color	A	B	C	D	E	F	G
2339	15 30 40 45	Die Cast Aluminum	Black	4.921"	3.937"	2.953"	.197"	10.827"	3.780"	3.780"
		H	J	K	L	M	N	P	Q	Weight
2339	15 30 40 45	.874"	1.768"	1.102"	6.494"	.065"	4.134"	3.150"	.267"	1.310 lb

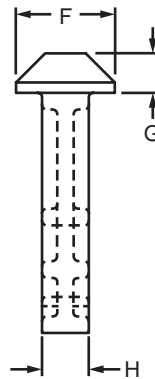
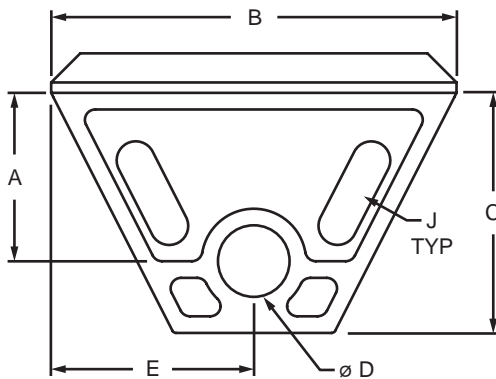
Suggested Hardware (Mount to T-Slot)

Part No.	Series	Qty.	Bolt	T-Nut
3408	15 30	2	1/4-20 x .500" BHSCS	Drop-in
75-3600	40	2	M6 x 12mm BHSCS	Drop-in
75-3602	45	2	M6 x 14mm BHSCS	Drop-in

Slide-In Tool Hanger

Part Description:

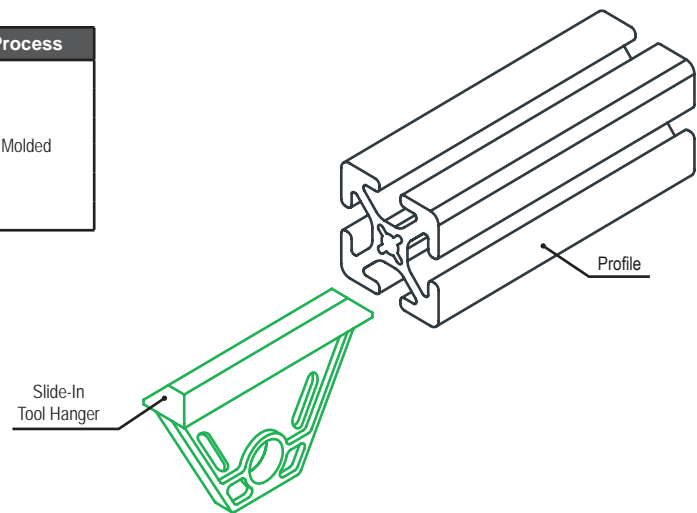
The slide-in tool hanger is made of high-strength black nylon and is ideal for hanging air tools, cable reels, and heavy door panels. It slides into a T-slot end and moves easily within the channel with no lubrication necessary. There is a hole in the hanger for a spring hook (page 817). The tool hanger has a 100 pound (68 kg.) capacity.



Part No.	Series	A	B	C	D	E	F	G	H	J	Weight
2099	10	.810"	1.950"	1.156"	.344"	.975"	.475"	.190"	.225"	R .098" x .354"	.013 lb
2100	15	1.250"	2.900"	1.670"	.500"	1.450"	.625"	.250"	.250"	R .098" x .472"	.030 lb
25-2099	25	20.57mm	49.53mm	29.36mm	8.74mm	24.77mm	12.07mm	4.83mm	5.72mm	R 2.49mm x 8.99mm	.0060 kg
12016	30	21.80mm	60.00mm	33.00mm	10.50mm	30.00mm	14.00mm	4.20mm	7.50mm	—	.0086 kg
40-2100	40	31.75mm	73.66mm	42.42mm	12.70mm	36.83mm	15.88mm	6.35mm	6.35mm	R 2.49mm x 11.99mm	.0138 kg
12015	45	21.80mm	60.00mm	33.00mm	10.50mm	30.00mm	18.00mm	4.20mm	7.50mm	—	.0109 kg

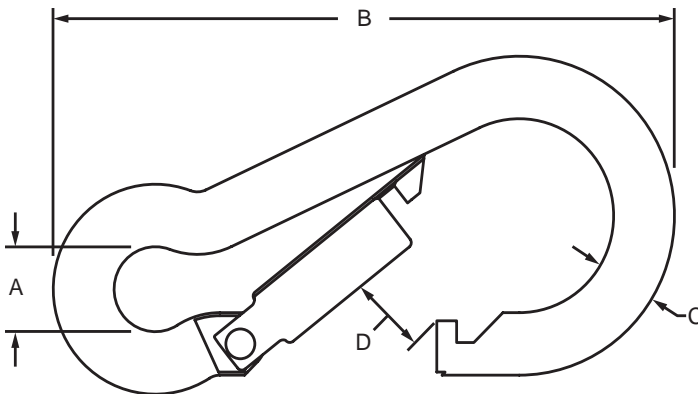
Material Specifications

Part No.	Material	Grade	Finish	Process
2099	Nylon	—	Matte	Molded
2100	Nylon	—		
25-2099	Nylon	—		
12016	Glass Filled Nylon	PA6 GF30		
12015	Glass Filled Nylon	PA6 GF30		
40-2100	Nylon	—		



Part Description:

The tool hanger spring hook is commonly used with the slide-in tool hanger to hang cables, air tools, and reels. It makes it easy and quick to change devices and is comprised of electro-galvanized mild steel creating a strong and durable option with a 550 pound (374 kg.) breaking capacity.

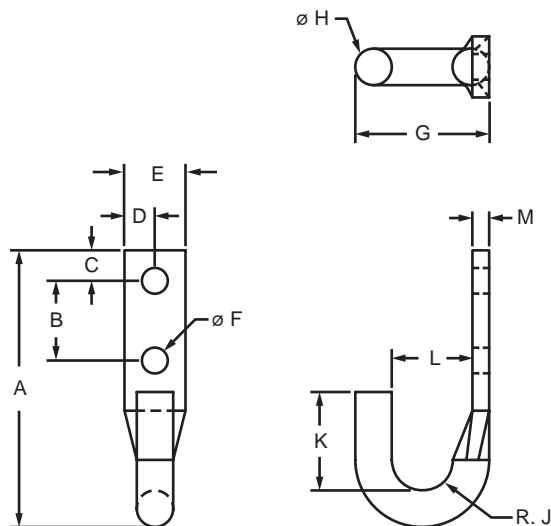


Part No.	Series	Material	Grade	Finish	Process	A	B	C	D	Weight
2108	10 15	Steel	Mild	Galvanized	Formed	.313"	2.375"	.230"	.313"	.059 lb
65-2108	25 40					7.95mm	60.33mm	5.84mm	7.95mm	.0268 kg

Vertical Mount Hook

Part Description:

The vertical mount hook can be used to provide storage and organization. It mounts vertically to a T-slot profile.



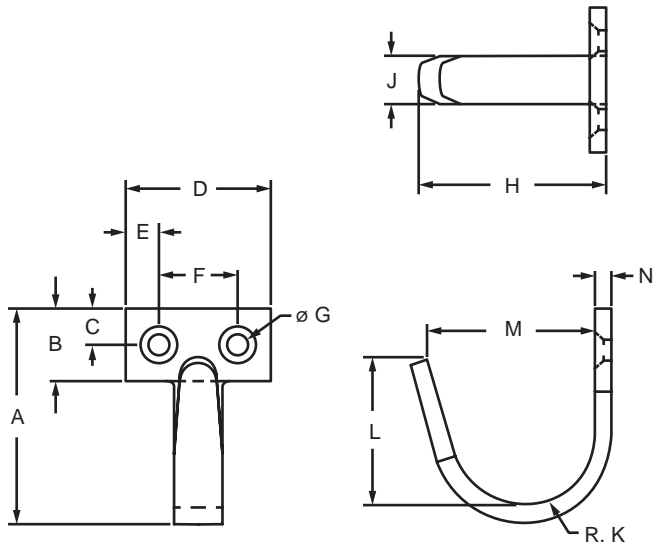
Part No.	Series	Material	A	B	C	D	E	F	G	H	J	K	L	M	Weight
14158	10 15 25 30 40 45	Steel	2.810"	.810"	.310"	.310"	.620"	.260"	1.360"	.370"	.310"	1.000"	.820"	.170"	.290 lb

Suggested Hardware (Mount to T-Slot)

Series	Part No.	Qty.	Bolt	Part No.	Qty.	T-Nut
10	3061	2	1/4-20 x .500" BHSCS	3376	2	Roll-in
15	3063	2	1/4-20 x .625" BHSCS	14165	2	Drop-in
25	11-6312	2	M6 x 12mm BHSCS	25-1966	2	Roll-in
30	11-6312	2	M6 x 12mm BHSCS	13117	2	Drop-in
40	11-6314	2	M6 x 14mm BHSCS	13119	2	Drop-in
45	11-6316	2	M6 x 16mm BHSCS	13129	2	Drop-in

Part Description:

The horizontal mount hook can be used to provide storage and organization. It mounts horizontally to a T-slot profile.



Part No.	Series	Material	A	B	C	D	E	F	G	H	J	K	L	M	N	Weight
14155	10 15 25 30 40 45	Steel	1.859"	.750"	.375"	1.515"	.359"	.813"	.204"	1.643"	.496"	.559"	1.194"	1.474"	.175"	.113 lb

Suggested Hardware (Mount to T-Slot)

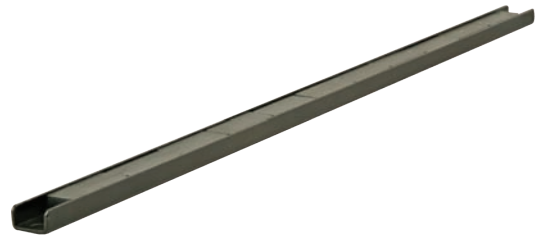
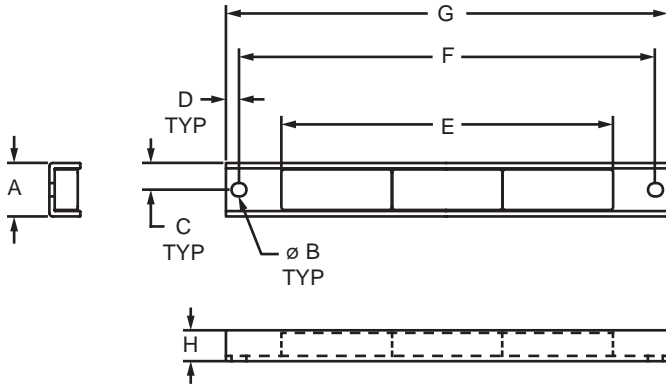
Series	Part No.	Qty.	Bolt	Part No.	Qty.	T-Nut
10	3042	2	10-32 x .375" BHSCS	3375	2	Roll-in
15	3050	2	10-32 x .500" BHSCS	3932	2	Drop-in
25	11-5310	2	M5 x 10mm BHSCS	25-1956	2	Roll-in
30	11-5310	2	M5 x 10mm BHSCS	13115	2	Drop-in
40	11-5314	2	M5 x 14mm BHSCS	13116	2	Drop-in
45	11-5316	2	M5 x 16mm BHSCS	13127	2	Drop-in

Magnetic Tool Holder

80/20 Inc.

Part Description:

The magnetic tool holder is commonly used to organize and store tools. It mounts to a T-slot profile.



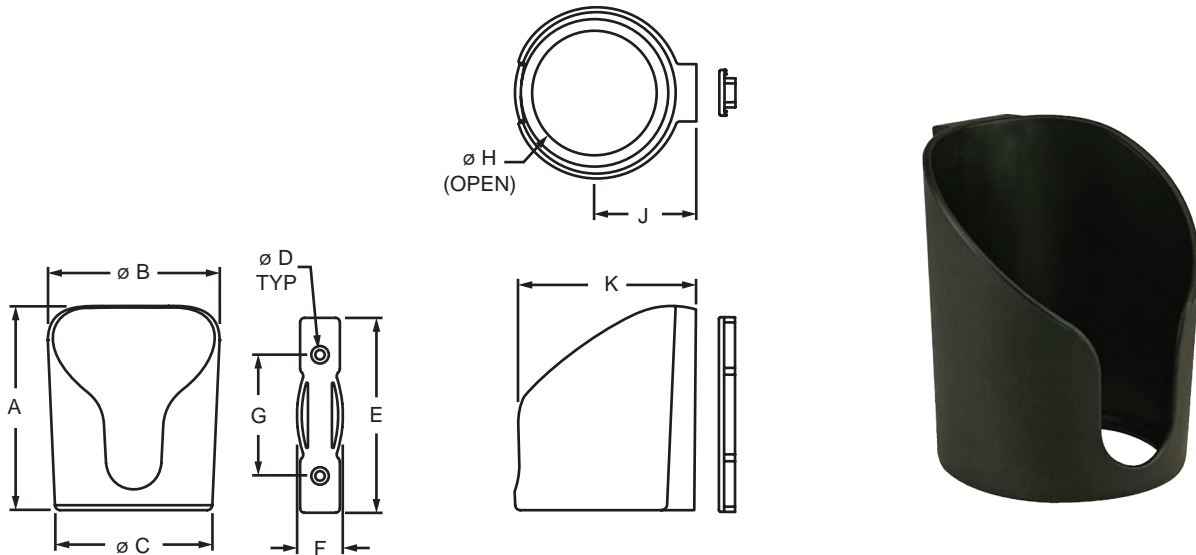
Part No.	Series	Material	Color	A	B	C	D	E	F	G	H	Weight
3959	10 15 25 30 40 45	Steel	Black	.950"	.236"	.475"	.233"	21.654"	23.160"	23.625"	.550"	2.062 lb

Suggested Hardware (Mount to T-Slot)

Series	Part No.	Qty.	Bolt	Part No.	Qty.	T-Nut
10	11-6312	2	M6 x 12mm BHSCS	3859	2	Slide-in
15	11-6312	2	M6 x 12mm BHSCS	3931	2	Drop-in
25	11-6310	2	M6 x 10mm BHSCS	25-1961	2	Slide-in
30	11-6310	2	M6 x 10mm BHSCS	13117	2	Drop-in
40	11-6312	2	M6 x 12mm BHSCS	40-1961	2	Slide-in
45	11-6312	2	M6 x 12mm BHSCS	13129	2	Drop-in

Part Description:

The tool holder – open bottom easily mounts to a T-slot profile and holds tools, such as drills and drivers, larger bottles and cups. This item is commonly used in workstations, assembly cells, and carts.



Part No.	Series	A	B	C	D	E	F	G	H	J	K	Weight
2286	10 15 25 30 40	4.606"	3.874"	3.594"	.228"	4.449"	1.023"	2.756"	2.913"	2.303"	4.045"	.321 lb

Material Specifications

Material	Process	Color
Nylon	Molded	Black

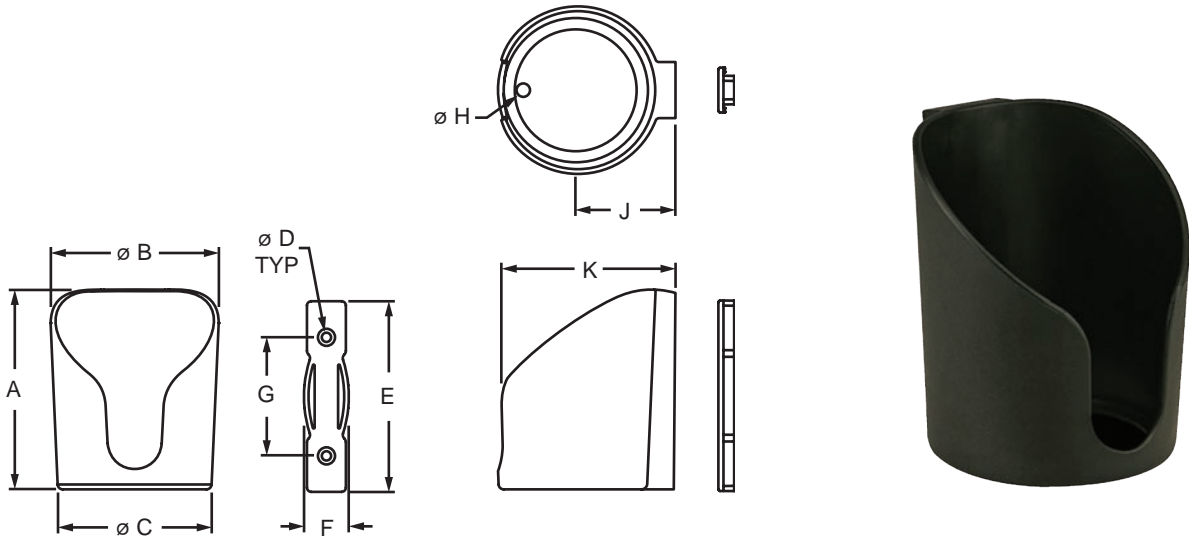
Suggested Hardware (Mount to T-Slot)

Series	Part No.	Qty.	Bolt	Part No.	Qty.	T-Nut
10	11-5716	2	M5 x 16mm FHSCS	3875	2	Roll-in
15	11-5716	2	M5 x 16mm FHSCS	3844	2	Roll-in
25	11-5716	2	M5 x 16mm FHSCS	25-1956	2	Roll-in
30	11-5716	2	M5 x 16mm FHSCS	13115	2	Drop-in
40	11-5716	2	M5 x 16mm FHSCS	40-3913	2	Roll-in

Cup Holder - Closed Bottom

Part Description:

The cup holder – closed bottom easily mounts to a T-slot profile and holds bottles and cups. This item is commonly used in workstations, assembly cells, and carts.



Part No.	Series	A	B	C	D	E	F	G	H	J	K	Weight
2287	10 15 25 30 40	4.606"	3.874"	3.594"	.228"	4.449"	1.023"	2.756"	.315"	2.303"	4.045"	.346 lb

Material Specifications

Material	Process	Color
Nylon	Molded	Black

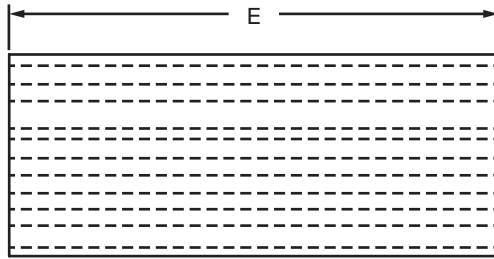
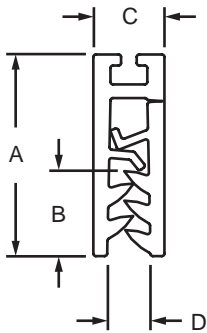
Suggested Hardware (Mount to T-Slot)

Series	Part No.	Qty.	Bolt	Part No.	Qty.	T-Nut
10	11-5716	2	M5 x 16mm FHSCS	3875	2	Roll-in
15	11-5716	2	M5 x 16mm FHSCS	3844	2	Roll-in
25	11-5716	2	M5 x 16mm FHSCS	25-1956	2	Roll-in
30	11-5716	2	M5 x 16mm FHSCS	13115	2	Drop-in
40	11-5716	2	M5 x 16mm FHSCS	40-3913	2	Roll-in



Part Description:

The light-duty adhesive clamp is a black plastic holder that snaps shut to secure documents, paper, vinyl and fabric up to .040" (1.016mm) thick. It mounts with an adhesive peel and stick backing and adheres to most materials.

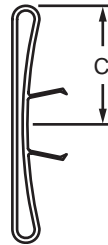
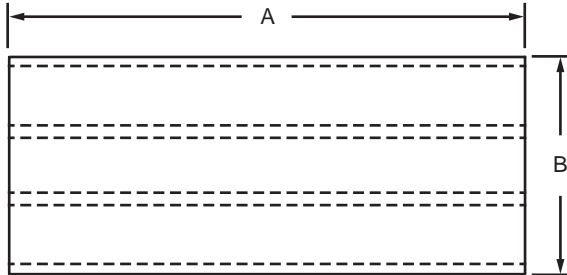


Part No.	Series	Material	Finish	Process	Color	A	B	C	D	E	Weight
2851	F M	PVC	Matte	Molded	Black	.800"	.337"	.282"	.172"	3.000"	.017 lb
2852	F M					.800"	.337"	.282"	.172"	22.000"	.140 lb
65-2851	F M					20.32mm	8.56mm	7.16mm	4.37mm	76.20mm	.0076 kg
65-2852	F M					20.32mm	8.56mm	7.16mm	4.37mm	558.80mm	.0630 kg

Label Holder

Part Description:

The label holder is made of heavy-duty clear plastic with an anti-glare finish. It snaps into a T-slot to securely hold labels and is commonly used for displaying instructions or safety information. **Additional Information:** Please note that label holders are sold in packs of 25.

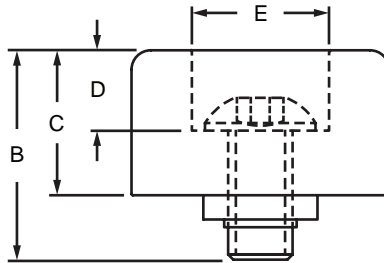
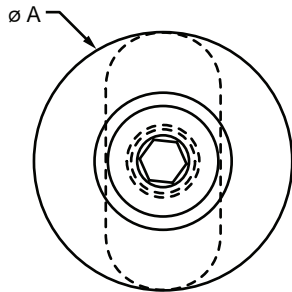


Part No.	Series	Material	Process	Color	A	B	C	Weight
2843	10	Plastic	Extruded	Clear	3.000"	1.000"	.500"	.247 lb
2844	10				6.000"	1.000"	.500"	.483 lb
2845	15				4.000"	2.000"	.630"	.699 lb
2846	15				6.000"	2.000"	.630"	1.072 lb
25-2843	25				76.20mm	25.40mm	12.70mm	.1122 kg
25-2844	25				152.40mm	25.40mm	12.70mm	.2194 kg
40-2845	40				101.60mm	50.80mm	15.90mm	.3171 kg
40-2846	40				152.40mm	50.80mm	15.90mm	.4865 kg



Part Description:

The rubber bumper is commonly used to dampen vibrations or as a door stop or shock mount. The hardware to mount the bumper to a T-slot is included.



Part No.	Series	Material	Color	A	B	C	D	E	Weight
2850	10	Rubber	Black	1.000"	.813"	.563"	.313"	.531"	.035 lb
2849	15			1.500"	1.031"	.625"	.344"	.750"	.089 lb
25-2850	25 30			25.40mm	21.95mm	14.30mm	7.95mm	13.49mm	.0186 kg
40-2849	40 45			38.10mm	26.74mm	15.88mm	8.74mm	19.05mm	.0376 kg

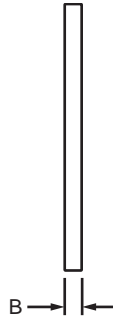
Included Hardware (Mount to T-Slot)

Series	Part No.	Qty.	Bolt	Part No.	Qty.	T-Nut
10	3061	1	1/4-20 x 1/2" BHSCS	3382	1	Economy
15	3330	1	5/16-18 x 11/16" FBHSCS	3278	1	Economy
25 30	11-6314	1	M6 x 14mm BHSCS	3859	1	Economy
40 45	11-8318	1	M8 x 18mm BHSCS	3838	1	Economy

Tabletop Mounting Tape

Part Description:

The tabletop mounting tape is a high-strength bonding method that is easy to use and provides long-term durability. The 3M™ VHB™ double-sided tape adheres to a wide variety of materials and is commonly used to mount a tabletop work surface horizontally, as it eliminates the need for machining. The pressure-sensitive adhesive bonds on contact. **Additional Information:** Please note this product is sold in packs of 10 pieces.



Part No.	Series	Material	Color	A	B	Weight
13099	F M	Acrylic	White	1.181" (30.00mm)	.039" (1.00mm)	.023 lb (.0104 kg)