



Thinking Of Selling?



NOW IS THE TIME!

It Is A Sellers Market!

Interest Rates Are Still Low, And There Is Still An Abundance Of Buyers Looking!

With Our Nationwide Marketing, Your Property Will Be Listed On ALL Major Land Sites!

We Are Able To Get Our Sellers Top Dollar For Their Properties.

We List And Sell Properties Of All Sizes And Types, So Don't Hesitate To Call And Let One Of Our Land Specialists Come Out And Take A Look And Assist You In Selling.

**14981 Centerline Ave., Cole Camp, MO • 12647 S. Hwy 63 Rolla, MO
Call Toll Free 844-974-1850**

FREE - TAKE ONE

FREE - TAKE ONE

FREE - TAKE ONE

Ad Tracker

573-736-2226 ~ A Weekly Advertiser ~ www.adtrackermo.com

Vol. 47 No. 21

P.O. Box 37 Crocker, MO 65452

May 27, 2021

Trailer Trends

HICKORY HILL MO. 573-498-0121

trailertrendzllc.com

Please Mention This Ad For Sale Prices



2021 Doolittle Trailer 7x12 Solid Side Utility Trailer - 14K GVW, 5 Rear Mesh Gate W/ Spring Assist, Tool Box - **-\$2,995**



2021 Load Trail 88x14 Load Trail Dump Trailer - 14K Dump, 36 Sides, Side In Ramps, D Rings, Max Step, Spare Mt - **-\$11,950**



2021 Load Trail 77x12 Utility Trailer - Scissor Hauler, 7K GVW, Custom Tilt, 4 D Rings, - **-\$4,875**



2021 Load Trail Deckover Equipment Trailer - 102x25 LT GVW Deckover, 14K, 2 - 10K Jacks, Winch Plate, Max Step, 5 Dove W/ Max Ramps - **-\$10,250**



2021 Norstar Truck Bed - 86 x87x66 - **-\$3,150**



2021 ALUMA 8220H Flatbed Trailer - Tilt Anniversary Edition, 2 - 5,200 LB Rubber Torsion Axles - Easy Lube Hubs, Electric Brakes, Breakaway Kit, ST2165/75R14 Radial Tires - **-\$10,000**



2021 Stealth Trailers 8.5x24 Nomads Car Racing Trailer - White W/ Black out, Platinum Pkg, 90" Int. Height, Pwr Awning, No A/C, Happyfac Bed - **-\$333,600**



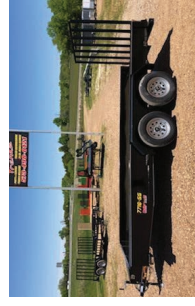
2021 Heartland 82x22 Flatted Trailer - 7K Tilt, 18-4, Brakes On One Axle, Black - **-\$4,190**



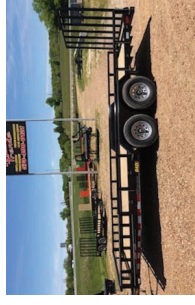
2021 Doolittle Trailer 82x14 Master Dump - 14K GVW, 2 Sides, 3 Way Gate, Ramps, D Rings, Wireless Remote, Tarp Kit - **-\$11,825**



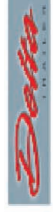
2021 Load Trail 102x28 Deckover Trailer - 14K, 2-10K Jacks, Winch Plate, Max Step, 5 Dove W/Max Ramps - **-\$10,600**



2021 Doolittle Trailer 77x16 Solid Side Utility Trailer - 7K GVW, 5 Rear Mesh Gate W/ Spring Assist, Tool Box - **-\$4,450**



2021 Doolittle Trailer 84x20 Utility Trailer - 10K GVW, Tube Top Rail W/ ATV, Side Ramps, 5 Rear Mesh Gate W/ Spring Assist - **-\$6,595**



2 Locations

573-498-0121 Hickory Hill, MO • Exir 121 573-445-3390 Columbia, Mo

**LADIES
WEEKLY
RECIPE**

CHARM CITY CORN

Bring 2 cups water, 1 cup milk and a pinch of salt to a boil in a pot. Cut 4 ears corn into thirds; add to the pot and cook until crisp-tender, 5 minutes, then drain. In the same pot, melt 4 tablespoons butter with 2 teaspoons Old Bay seasoning, a dash of green hot sauce and some salt. Toss the corn in the spicy butter.

THE AD TRACKER CAN BE PICKED UP IN THE FOLLOWING TOWNS.

Anutt - Apache Flats - Argyle - Ava - Barnett - Bay - Beaufort - Belle - Bland - Bourbon - Brazito - Brinktown - Brumley - Buckhorn - Buffalo - Cabool - California - Cambellton - Camdenton - Cedar City - Centertown - Chamolis - Conway - Crocker - Cuba - Devils Elbow - Dixon - Dogpatch Corner - Doolittle - Dove - Drake - Dutzow - Edgar Springs - Eldon - Eldridge - Etterville - Eugene - Fair Grove - Flat - Freeburg - Freedom - Gasconade - Gerald - Gravois Mills - Greenview - Groves Springs - Hartsville - Henley - Hermann - High Point - Holts Summit - Houston - Hurricane Deck - Iberia - Jefferson City - Jerome - Koeltztown - Krakow - Lake Ozark - Laquey - Laurie - Leasburg - Lebanon - Lecoma - Leslie - Licking - Linn - Linn Creek - Lohman - Loose Creek - Loutre Jct. - Lyon - Mansfield - Marshfield - Marys Home - Marthasville - Meta - Montreal - Morgan - Morrison - Mt. Grove - Mt. Pleasant - Mt. Sterling - Newburg - New Haven - Northshore - Northwy - Olean - Osage Beach - Owensville - Phillipsburg - Preston - Rich Fountain - Richland - Roby - Rocky Mt - Rolla - Rosati - Rosebud - Russellville - St. Anthony - St. Clair - St. Elizabeth - St. James - St. Martins - St. Thomas - St. Robert - Salem - Seymore - Sherrill - Sleeper - Stanton - Steelville - Stoutland - Stover - Sullivan - Sunrise Beach - Swedeberg - Swiss - Taos - Tipton - Tunas - Tusculumbia - Ulman - Union - Urbana - Versailles - Vichy - Vienna - Wardsville - Washington - Waynesville - Westphalia

To place an advertisement, stop by the office #100Tracker Plaza Crocker, MO, Monday - Friday, 8a.m. - 5 p.m. or just call 573-736-2226. You can mail an ad to the Ad Tracker, P.O. Box 37, Crocker, MO. 65452. Check our coupon page for details. Ad Tracker is FREE at your favorite grocery store, restaurant, feed store, liquor store, donut shop, or other location in over 120 towns. Ad Tracker is an advertising paper for many purposes. Ad Tracker and/or its employees do not necessarily encourage participation in (or support of) advertisements such as religious, political, etc., we are not liable for the claims or opinions expressed and paid for by our advertising customers in ANY of our issues, and reserve the right to accept or reject any ads submitted for printing. Ad Tracker is not a lending institution and reserves the right to define basis for and/or determine whether or not to extend credit.

AD TRACKER: is an advertising magazine for many purposes. Ad Tracker and/or its employees do not necessarily encourage participation in (or support of) advertisements such as religious, political, etc.; we are not responsible for ad validity and we are not liable for the claims or opinions expressed and paid for by our advertising customers in ANY of our printings and reserve the right to accept or reject any ads submitted for printing.

FOR SALE: Quality performance Angus & Simi-Angus bulls. Semen tested, breeding soundness, satisfaction guaranteed. Bulls suitable for heifers for calving ease. Free delivery by May 20th. Call for details (573)680-9117 cell, (573)437-3751, (573)437-2507. Bland.

AD TRACKER 573-736-2226

WE BUY "JUNK" CARS & TRUCKS: Call SORRELL'S AUTO & TRUCK PARTS. (573)445-4451. Columbia.



2011 FORD ECONOLINE E-250: Only 53,xxx Miles, Runs On Propane, \$14,999.

VICTORY AUTO SALES
10676 State Route V Off I-44, Rolla, MO 65401
573-458-2015 V21-#62S

THEY ARE HERE: Tiny homes cute, cute, cute. columbiadiscounthomes.com (573)499-9993.

FOR SALE: Vermeer WR20 hay rake, excellent condition, always kept in a barn. \$2,000. (573)259-2435

PAUL'S FURNITURE OUTLET

- 0\$ Down
- 12 Months Same As Cash!
- Up To 36 Months To Pay!

www.wewontheundersold.com

100 Country Club Drive • St. Robert, MO 65584 573-336-7255

Like us on Facebook

JACOB'S CAVE MEADOWLANDS ACTIVITIES, L.L.C.

MISSOURI'S LARGEST SWAP MEET

SUMMER: June 3, 4, 5 & 6th • FALL: Sept. 30, Oct. 1, 2 & 3

Bring Your Pigeons, Poultry, Small Animals, New And Used Items And Everything In Between; Except Cattle, Horses, Pigs

No Food Or Concession Booths Without Prior Approval
No ATV's Allowed The Saturday Of The Swap

ADMISSION:
\$10.00 Per Vehicle Per Day To Buy or Look
\$10.00 Per ATV Per Day

Vending \$10 Per Spot Per Day
Over Night Spot Additional \$5.00 Per Spot Per Night

Located Between Versailles And Gravois Mills On State Road TT Off Highway 5.
For Information Call Jacob's Cave: 573-378-4374
Email Us: jacobscave@earthlink.net • Web Site: www.jacobscave.com

Visit Us On Facebook

USED PIPE FOR SALE: 1", 2", 2 1/2", 3", 4", 7" in stock. Call 8-5, (573)369-2438. Tusculumbia.

BRAUNVIEH BULL: Easy Calving, Gentle, Daughters Are Wonderful Cows. 573-291-4732.

NOTICE

The Ad Tracker Office Will Be **CLOSED**

Monday, May 31st, 2021

For Memorial Day

Display Deadline: Friday, May 28th
Classified Deadline: Tuesday, June 1st

WANTED: Horses, saddles, tack, horse trailers. (314)808-4576 or (314)570-2639. K41TFN

BULLS FOR LEASE: Over 70 registered Angus & Hereford to choose from. 90 day lease \$900. Trucking available for extra charge. (573)999-3197, Kingdom City, MO.

BUYING & SELLING: Used mobile homes, move and set-up available. For inventory or to sell us your home call (636)583-8686 or visit www.eastcentralmoilehomes.com

WE Set The Standard FOR FENCE - FENCE - FENCE

Great Service - Quality Work
We Sell And Install

- Chain Link (All Types And Sizes)
- Wood Privacy - Vinyl Fence (All Types)
- Aluminum Fence Many Styles

Prices Are On The Increase - Call NOW To SAVE!

FISHER CUSTOM FENCE
Dennis 573-284-5356 • Brady 573-338-3114
Serving Central Missouri For 20 Years

SELL IT IN THE AD TRACKER

Local Made Grilling Pellets 100% Natural \$11.99 20 Lb

DUTCH COUNTRY STORE LLC.

Easy BBQ Charcoal 100% Natural Lump 7 Lb Box \$2.99

5 Miles East of Versailles off Hwy C on Kelsay Road Watch for Signs • 573-378-4395 • We Accept EBT Cards
Monday-Saturday 8 a.m. - 5 p.m. • Friday 8 a.m. - 6 p.m. • Closed Sunday

MEMORIAL DAY SPECIALS!

Fresh Grown Strawberries & Tomatoes • Fresh Fruits & Veggies
Florida Farm Fresh Cantalope - Very Very Sweet!

Get Out The Grill

Pork Tenderloins Or Fillet \$2.79 Lb

Beef Patties 4 Lb Box
Only \$5.99 Ea (16 1/4 Lb Patties \$1.49 Lb)

Pork Chops Smoked Or Seasonal
\$1.29 Lb

Ice Cream Neapolitan
99¢ Ea 56 Oz. Very Good

GREENHOUSE SPECIALS
10% OFF EVERYTHING

Local Homemade Popcorn
\$2.19 Great Variety 8 Oz. Bag

DELI

Hot Pepper Cheese - Reg. \$4.25 Lb.....Sale \$3.25 Lb
Lebanon Bologna - Reg. \$6.75 Lb.....Sale \$5.50 Lb
Colby Cheese - \$4.25 Lb.....Sale \$3.75 Lb

Perry's Repair Center, LLC

Marine Sales & Service

Parts & Accessories
Suzuki Outboard Dealer,
Landau Pontoons,
Welded Jon Boats

573-732-5563
Bourbon, MO

LAKE OF THE OZARKS: Lots starting at \$3950, \$79 down, \$79 per month. Beautiful wooded lots. Great for the avid fisherman. Lots are a short distance from the Lake of the Ozarks. Conservation handicapped accessible covered fishing dock with lighted area. Free lake access and area boat ramps. No gimmicks, immediate possession, or own for investment, owner financing. Camping lots and acreage tracts also available. Prices good through June 1st, Hwy. 135 South out of Stover, MO. Take Lake Road 135-12 to the Ivy Bend Land Office. Open Friday, Saturday, Sunday other days by appointment. Call (573)372-6493. www.ivybendlandoffice.com

LOOKING FOR FALL DEER SEASON HUNTING LEASE: Up to 200 Acres. (314)713-8519.

WEATHERBY ORION-1: Over/under double barrel 12 ga., 28 in., New Won on raffle. \$775. (573)680-2524.

FOR SALE: 1997 Single wheel turn Chevy, 454, 4x4. rebuilt transmission, \$3000. (417)270-6598.



WEEKLY SPECIALS
Prices Valid 5-26-21 Thru 6-1-21

Buffalo Chicken Breast.....	Only \$5.25 Lb Reg. \$5.99
Honey Roasted Turkey Breast.....	Only \$4.75 Lb Reg. \$5.49
Baby Swiss Cheese.....	Only \$5.25 Lb Reg. \$6.25
Muesnter Jalapeno Cheese.....	Only \$4.75 Lb Reg. \$5.49
Blueberries.....	\$2.99 Pt. Reg. \$3.99
Cabbage.....	Only 49¢ Lb Reg. 79¢
Vidalia Onions.....	Only 89¢ Lb Reg. \$1.29
Iceberg Lettuce.....	Only 99¢ Reg. \$1.69
Romaine Lettuce.....	Only \$2.29 Reg. \$2.99
Cauliflower.....	Only \$2.49 Reg. \$3.79

Don't Forget Memorial Day Weekend!!
We Have Cantaloupe, Watermelon & Sweet Corn

1907 S. Business 54, Eldon, MO 65026 • 573-392-2059

JOHN DEERE: 1982 75 h.p. cab tractor, new rubber all around, new a/c, no leaks, good running tractor. \$9500. (573)732-3915.

JOHN DEERE 569 BALER: 2014, new belts, rebuilt pickup, net kicker, 1000 rmp, 16,000 bales, field ready, \$18,500. Call (573)881-3557.

SALERS GENTLE Black Polled: 4 Years Old, Excellent Calving Ease. 573-291-4732.

COMMERCIAL TRUCK INSURANCE: Competitive Rates, specializing in long haul, dump trucks, log trucks and delivery. Call 573-244-3377 for professional service.

ROUND BALES Hay: Net Wrapped, \$29.50. George's Tack Saddle And Feed. Camdenton. 573-346-7866.

JONES ANGUS FARMS KINGDOM CITY: Registered angus bulls for sale. 12-14 months old, top of the line genetics, easy calving, gentle, tested & ready for work. Price \$2000 without registration papers, \$2200 with registration papers. Jeff Jones (573)826-0013 or Kenneth Jones (573)826-0518.

ZCM TIMBER HARVESTING

573-569-0592

Buying standing timber




10 BLACK HEIFERS: Young black bull, \$12,500. (573)437-3590.

TONNEAU COVER: Roll UP Type, Fits 09-14' Ford F150 extended cab 6 1/2' bed. like new, \$85, Linn Creek. 210-787-8222.

1995 CHEVY 2 TON TRUCK: w/24' reefer box. 3116 Cat w/6 spd. transmission. Asking \$8850. (573)774-1123.

SMITH CREEK WELDING

Fabrication • General Repair • Aluminum Welding

35531 Higgins Rd • Tipton, MO
660-458-6316

Mon - Fri: 8 AM-5PM • Sat: 8 AM To 12 PM Appt. Only • Sun: Closed!

"OUR GOAL IS TO HAVE SATISFIED CUSTOMERS"



\$2,875



\$2,975

26' HEAVY DUTY BALE TRAILER - Choice Of Colors
Spike Hitch Included • Holds 11 5'x6' Bales
Check Out Our Three Point Hitch
Hook And Unhook Without Leaving The Tractor



\$465



\$745

Three Point Bale Spike \$310.00 • Burn Barrels \$10.00

1996 26' WILDERNESS: 5th wheel, slide out, no leaks, good condition. Adaptor for goose-neck. \$4000. OBO. (573)646-3351.

FOR SALE: 1992 Chevrolet Kodiak Lime Truck, 10 Ft Bed, \$6,000. 1998 Vermeer 605L Round Baler, \$5,500. Holts Summit. 573-295-4387.



KUHN 112 SPEEDRAKE: 5 Yrs Old, New Wheels Late 2020, Sheded, \$5,950. Call (573)881-3557.

B21



2019 MONTANA 3791RD
Like New, Tons Of Storage,
Full Time Living. \$64,995
Love Trades!

BOURBON RV Center
I-44 • Exit 218
Bourbon, Missouri
636-667-9476
573-732-5100
We're just a short drive from high prices!

Ask For Matt (Sales Manager) www.bourbonrv.com

WANTED: GOOD Used Gooseneck Stock Trailer. 573-291-4732.

1991 NH 408 DISCBINE: 1 owner, good condition. \$8500. OBO. (573)369-2702.

Mahindra Rise.

Mahindra 4500 series utility tractors are rugged and hardworking designed for light and medium-duty applications. Available in 2WD or 4WD, these practical, no-nonsense machines are designed to provide you with everything you need to get the job done. Available from 41 to 48 engine horsepower, and compatible with an extensive number of high-quality implements and attachments, you can easily configure this tractor to your liking so you can make the most of your workday.



Mahindra 4540

- 25.9 HP
- Industrial Tires
- 7 year Powertrain Warranty

\$24,600



Mahindra 1640

1600 series tractors give you the best of both worlds. Optimal for light- to medium-application labor, these premium compact utility vehicles offer both a small footprint and a competitive 3- point hitch lift capacity, along with deluxe features designed to keep you comfortable.

- 25.9 HP
- Industrial Tires
- 7 year Powertrain Warranty

\$22,700



Mahindra 1626

- 38.7 HP
- 3-Point Hitch Lift Capacity
- HST & Gearshift Options Available

\$18,750



Mahindra 3650 w/backhoe

The 3600 series premium tractors are super-powered 4WD compact utility workhorses designed for medium- to heavy-duty applications. With best-in-class loader and 3-point lift capacities, the 3600 series is Mahindra's designated compact powerhouse, designed to handle the toughest agricultural or industrial jobs. With one of these feature-rich machines, you'll be excited for a day's worth of work

- 49 HP
- 3-Point Hitch Lift Capacity
- Transmission - HST (3 ranges)

\$41,600

DIAMOND EQUIPMENT

4 MILES SOUTH OF WESTPHALIA ON HWY. 63
(573) 455-2617
WWW.DIAMONDREQUIPMENT.COM
SALES@DIAMONDREQUIPMENT.COM

Salem Metals

We've Got You Covered!

WHERE QUALITY AND SERVICE MEET!

Custom Length Metal Roofing & Siding, Trim, Entry Doors, Windows, Sliding Door Hardware, Bubble Insulation & Roofing Underlayments

Local Manufacturer

9082 W Hwy 32 Salem, Mo - **573-729-6000**
salemmetal@ibifax.com/www.salemmetals.com

CASH PAID: For comic books, pre 1980 sports cards, vintage toys, vintage movie posters & lobby cards. Vintage model kits. (636)390-2043.

FOR SALE: 3 bedroom., new metal roof, furnace & carport. Deck, fenced. Rolla, MO. 1307 Maple. \$60,000. (573)308-5469.

JOHN DEERE 7200 TRACTOR: MFWD, cab, power quad with JD 740 SL loader, bad engine, good short block included. \$26,500. Call (573)881-3557.

WANTED TO BUY: Standing timber. Call GARRIOTT'S LOGGING, serving Mid-Mo. over 30 years. (573)220-1907 or (573)290-0527. garriottlogging.com. Fulton.

BARON'S GUNSMITHING: Fast professional repairs. Old/new firearms. (573)363-5801. Camdenton.

THEY ARE HERE: Tiny homes cute, cute, cute. columbiadiscounthomes.com (573)499-9993.



2007 MACK: Stock#R85 \$29,500; **2004 MACK:** Stock#R66, \$22,900; **2003 MACK:** Stock#R67, \$22,900; **2000 MACK:** Stock#R68, \$12,900. Contact Reagan Enterprises Inc, On Any Of These MACK Trucks. Call REAGAN ENTERPRISES, INC. 573-564-2542, 314-740-0246 Email www.reaganenterprises.net R21

ALL YOUR FARMING SUPPLIES

Tindle Feed  Purina Feed

Hendley Farm Supply, LLC
Location: Hwy. 17 • 7 Miles North Of Iberia
573-369-2438

FOR SALE: Rough sawn oak lumber, 85 per. board foot, actual dimension calculated. No job too large or small. Also buying timber oak or cedar. (417)520-7500.

QUALITY SADDLES Wanted: Will Pay Cash. **George's Tack Saddle & Feed.** Camdenton, MO. 573-346-7866.

POP'S SURPLUS

OPEN MEMORIAL DAY!
8 AM - 5 PM

You Never Know What You'll Find at **POP'S SURPLUS**
Just turn in to our **NEW Building at the OLD Truck**

General Merchandise • Toys
Furniture • Camping Equipment
Bikes • Rugs • Electronics

FROZEN HOME GROWN MEATS
Hamburger, Steaks, Briskett, Etc.

61180 Hwy. C, High Point, Mo 65042 • **660-489-4040**

REG. AQHA BROOD-MARE: 11 years old, \$1000. (573)437-3590.

WHEAT STRAW Small Squares: Clean, \$4 Bale. Versailles. 573-378-7326.

HATS OFF TO THE GRADUATES!

Wishing you all the best on your graduation day and in all your future endeavors. Congratulations to the Class of 2021!

Sakelaris
Ford Lincoln Of Rolla
www.sakelarisfordrolla.com
573-364-1211 • 800-325-1211
1621 Martin Springs Dr. • Rolla, MO 65401

★ Sales ★ Service ★ Parts

5-OIL CHANGES \$100.00
Includes:
Oil, Filter & Up To 5 Quarts Of Oil
* Excludes Diesel & Full Synthetic

See us at our **NEW** location at 1621 Martin Springs Dr. in Rolla, MO.

WE NEED YOUR TRADE AND/WE BY USED VEHICLES!
573-364-1211 • 800-325-1211

LARGEST IN STOCK SELECTION!

TIRES! TIRES! TIRES!
MATCHING TIRE PRICING ON MAJOR BRANDS!
FORD BEATS ALL PRICES!
REBATES AVAILABLE - SEE YOUR ADVISOR

Sakelaris Ford Lincoln offers Pick Up & Delivery Service for all Sales & Service!

*Must finance through Ford Credit Financing. Not all buyers will qualify for Ford Credit financing. Some restrictions may apply. Take new retail delivery from authorized Ford dealer's stock by 7/6/21. See dealer for qualifications and complete details on all incentives.

SALES TEAM

Al Morgan, Chris Gray, Jon Reed, Matt Janish, Ben Triker, Jerry Staples, Terry Betz, Chris Hunter, Steven Stout

Sakelaris
Ford Lincoln Of Rolla
www.sakelarisfordrolla.com

Sales Hours: Mon.-Fri. 8 AM-6 PM Sat. 8 AM-4 PM
Service Hours: Mon.-Fri. 8 AM-6 PM Saturday 8 AM-4 PM
573-364-1211 • 800-325-1211 • 1621 Martin Springs Drive, Rolla, MO 65401

TOMPKINS IMPLEMENT COMPANY, INC.
Hwy. 52 West, P.O. BOX 389, Eldon, MO 65026 • **573-392-4410**
www.tompkinsimplement.com

Sales • Service • Repairs

TRACTORS

AGCO ST41A Compact, AWD, Loader.....	\$12,000
AGCO GT75A Cab, AWD, Loader.....	\$28,000
AGCO RT110A Cab, AWD, Loader.....	\$50,000
Deutz FAHR, AGRO Plus 410 Cab, AWD, PS.....	\$30,000
Allis Chalmers 6060 Cab w/Loader.....	\$19,000

USED EQUIPMENT

Massey Ferguson 2956A Net Wrapped Baler.....	\$25,000
Massey Ferguson 2756A Net Wrapped Baler 3700 Bales.....	\$17,000
New Holland BR740 Silage Special, Net Wrapped.....	\$17,000
New Holland H7230 Discbine (10.4).....	\$16,000
New Holland H7230 Discbine (10.4).....	\$15,000
New Holland 1412 Discbine 10.4 Flail.....	\$11,000
New Holland 660 Round Baler, Auto.....	\$6,500
New Holland 658 Round Baler, Auto.....	\$8,500
New Holland 488 Haybine.....	\$2,000
New Holland 851 Round Baler.....	\$2,000
H&S 12 Wheel High Capacity Wheel Rake.....	\$6,500
Case IH High Capacity 10 Wheel Rake.....	\$6,000
Bush Hog 2615L.....	\$10,000

FOR SALE: 3 & 4 Year Old Pure Bred Angus Bulls. Top Notch Genetics On A Complete Health Program. Very Easy Calving Bulls. All Are AI Sired Out Of Top Genetics. Call 573-578-3086.

FOR SALE: New cottage cabin. 1 or 2 bedroom, 1 bath, kitchen, living room, in private senior park like setting. Owners only, close to lake and marina and groceries. Call Ray for details (573)346-3030.

EDGEWOOD GARDENS, LLC
Formerly Shirks Produce

573-392-8647 • 20203 Jones Creek Road, Barnett, MO

Buy 1 Get 1 Free On Annuals

- Retail & Wholesale
- Quality Plants
- Reasonable Price
- For All Your Flower Needs!

March - November
Mon-Fri 8AM-6PM • Sat 8AM-5PM

WANTED: SOMEONE to paint a Ford 35 Coupe. Cash paid. Jefferson City. (573)636-8000.

HAPPINESS IS NOT A STATION YOU ARRIVE AT, BUT A MANNER OF TRAVELING



June Sale

mfa-inc.com
SALE ENDS JUNE 12

HERDSMAN BRAND herdsmanbrand.com

6V Solar Charger \$174.99 #7364066

Herdsman Poly Wire \$10.99 Wire 200M #7114967

Pig Tail Post \$3.49 each #7114960

Wire 400M \$19.99 #7114968

Small to medium pastures
1.4 joules
Low impedance

Herdsman Hay Tarps Starting at \$369.99

Bullflex Super Cinch tie-down kit \$96.99 #7710725

- 18 pieces of UV stable, rot resistant rope pre-cut in 28 length
- 36 Super Cinches & pre-cut rope for cinches

Webb Rake Wheel \$96.99 RH/LH #7481096 #7481097 .55"

Tri-L Replacement Spear with Nut \$82.99 #7412361

- 1 year limited warranty
- Sleeve not included

10-Foot Cattle Rub \$24.29 #7415210

MADE IN TENNESSEE

Tri-L Bale Spear \$484.99 #7412342

- 2500 lb. capacity

Herdsman Poly Sprayer \$27.99 #7381501

2 gallon

Hiyield Garden, Pet & Livestock Dust \$5.99 4 lb. bag #9681514

- Broad-use, ready to use, low-odor insecticide
- Provides both repelling and killing action of over 60 insects

Catt Plex \$24.99 Quart #9681242

- Kills cattails, water lilies and other shore/emerged aquatic weeds to the root
- 100% safe for humans, fish, livestock, pets, birds, swimming, consumption and irrigation

Workhorse ATV Sprayer \$309.99 #7487820

- 5 gpm pump
- 24 ft. coverage boomless nozzles

25 gallon

MFA FULL THROTTLE Elanco **Rumensin** MFA SHIELD TECHNOLOGY

Flexon Hoses 5% OFF

10003

Hastings Tanks \$100.00

Visit your local MFA for all your tank needs!

CAMP CHEF THE WAY TO COOK OUTDOORS

See your local MFA for deals on Camp Chef pellet grills and accessories!

Stop by your local MFA Agri Services for additional sale items!



MFA-INC.COM

BUSINESS SERVICE DIRECTORY

TO PLACE YOUR AD ON THIS PAGE CALL TODAY!

390,000 PAGES OF ADS DELIVERED EVERY WEEK!

573-736-2226

"A Better Chance To Beat The Competition"

AIR PURIFIER

Www.Fressshaire.com

3 FREE DAYS TRIAL In Your Home-Office-Business YES, try before you buy

Best technology - Best solution kills SARS/Covid-2(cause of Covid-19)

EMORY MACY, 573-855-7321
CEO, Certified Air Coach

- ~ Certified, Verified, Validated by FDA, NASA & PBS
- ~ Air & Surface Pro kills 99.9999% of germ or virus of RNA/DNA Viruses - 30 minutes
- ~ Kills germ/virus on Surfaces? YES
- ~ Requires no air movement! Does NOT suck air. Filterless technology - Disinfect 3,000 sf
- ~ Makes ActivePure Molecules to kill germs/viruses
- ~ NASA Space Technology : Hall of Fame Inductee 2017

ANTIQUES & MORE

LOZ ANTIQUE MALL

ANTIQUES - COLLECTIBLES - SOME JUNK

Like us on facebook

(573) 298-3699

21 Cave Dr. Eldon, MO 65026
www.lozantiquemall.com

Booth Rentals & Display Cases, 18,000 Sq. Ft. Over 150 Booths

ANTIQUE/VINTAGE/HOME DECOR

THE RUSTY ROOSTER MARKET PLACE

Antiques ♥ Furniture
Home Decor
Vintage & More

Mon. - Sat. 9 A.M. - 5 P.M.
(417) 718-9136

208 WEST COMMERCIAL ST. LEBANON, MO

CABINETRY

Evan Bontrager, Owner
19862 Maries Rd. 636
Dixon, MO 65459
573-759-4456

Try Calling 12:30-1 P.M. Work Days

South Central Missouri Cabinetry

New Construction or Remodels
Custom Cabinets

CAMPING AND FLOATING

Ruby's Landing
Cabins, RV, Primitive Camping & Floating
www.rubyslanding.com

Long Term Available

rubyslanding.mo@gmail.com
573-855-9567

22474 Restful Ln
Waynesville MO 65583



CATTLE EQUIPMENT

Rissler Mfg Co.

CATTLE HANDLING EQUIPMENT

2 7/8" Pipe • 7/8" Sucker Rods • 2 7/8" Post Caps
Feed Banks • Bale Spike • Crowding Tubs
• Bale Feeders Feed Bins • Squeeze Chutes • Hay Bale Trailers Headgates • Self Feeders
• Calf Creep Feeders • Gates • Corral Panels

18998 Highway AA • Barnett, Mo 65011 **573-392-6960**

ENGINE/WELDING REPAIRS

VALLEY SHOP
(660) 458-6747

Repairs/Rebuilds • Welding Repairs
Engines, Trasmissions, • Electrical
Hydraulics, PTO Drivelines

38745 Molasses Mill Road Latham, MO 65050

FURNITURE

ARROWMART
Furniture & Appliances

4 Ways To Pay
4 Ways To Save

669 VFW Memorial Drive
St. Robert • 573-336-5000
227 N. Business Hwy. 5
Camdenton • 573-346-1975

- * Cash & Charge Card With Instant Cash Rebate
- * 12 Months Same As Cash-W.A.C
- * 4 Payments Same As Cash-With No Credit Check
- * 18 Month Lease To Own- With No Credit Check

GROCERY STORE

ROADSIDE COUNTRY STORE
36402 Hwy. E, Latham, MO - 660-458-6386

Fresh Eggs 3 Doz. Or More 10¢ Off Ea Doz.
6 Doz. Or More 20¢ Off Ea Doz.

Fresh Tomatoes, Peppers, Cucumber, Melon, Squash & Flower Plants

Mon-Thurs 8 AM-5:30 PM • Fri 8 AM-6 PM • Sat 8 AM-4:30 PM • Closed Sunday

HOME IMPROVEMENT

NEIGHBORHOOD'S HOME IMPROVEMENT STORE

Where QUALITY Doesn't Cost More!
19850 Husston Rd • Lebanon, MO 65536
417-533-5080 • 1-888-776-0038
www.neighborhoods-inc.com

OUTDOOR FURNACE

0% for 4 Years

HEATMOR™ Outdoor Wood Furnace
As Low As **\$168*** per month.

HEATMOR MIDWEST at Licking, MO 65542
Toll Free: (877)674-2962

PAVING

STOMBAUGH ASPHALT

Paving - Seal Coating - Striping

Call For A Free Estimate!
573-406-8706

 Fully Insured

PLANTS

Cedar Hill Nursery

Hydrangea
Onion Sets, Seed Potatoes, Bedding Plants
Trees, Bushes, Roses, Crepe Myrtle, Vines
Perenials, Flower & Vegetable Plants & More

660-337-6392 • 16602 Ivan Rd. • Fortuna

From Versailles Take Hwy. 5 North Turn Right On Hwy. HH To N. Cattle Drive. Follow Signs.

Open 9 A.M. - Dark Monday-Saturday

RETAIL

LATHAM MARKET

255 South Hwy E • Latham, MO

573-789-5252

- Antiques, Collectibles, Unique Gifts
- Surpuls And Tools, Housewares, Bicycle Parts
- Rustic Cast Iron Decor - Thousands To Choose From
- Over 10,000 Sq. Ft., Retail & Wholesale
- Quantity Discounts

Closed Sunday & Monday HOURS: 9 A.M. - 5 P.M.

SALVAGE

Poor Boys Garage & Salvage

 24 Hr Wrecker Service

573-336-4957 17575 Superior Rd. • St. Robert, Mo

SEWING/QUILTING

New Machines Starting At \$149.00

Pop Stitch Sewing Service LLC

BERNINA
SWISS QUALITY
573-378-2700

SEBO VACUUM CLEANERS Made In Germany

Sales & Service On All Makes
Tues.-Thurs. 8-5 • Fri. 8-6 • Sat. 8-12

SURPLUS/DISCOUNT

COUNTY ROAD SURPLUS L.L.C.

Tools • Toys • Gift Items • Household Items
Discount Tables Where Prices Drop Daily

19661 Excelsior Road
One Mile East Of Excelsior
Credit Cards Accepted

573-378-4201 Monday-Saturday 8 A.M. - 5 P.M.

TRANSPORT

NUTRA AG LOGISTICS, LLC

DRY BULK TRANSPORT • FEED & GRAIN HAULING • HOPPER AND AUGER TRUCKS

PHONE: 573-378-2800

12747 MARKET RD
VERSAILLES, MO 65084



WELDING

SMITH CREEK WELDING
General Repair • Big Bale Trailers
Bale Forks • Pallet Forks
Also Custom Built Forks

35531 Higgins Rd • Tipton, MO
660-458-6316

Place Ads By calling Us At **Ad Tracker**
(573)736-2226 Or Mailing P.O. Box 37 Crocker, Mo 65452
Classified Ads Are ONLY 50¢ Per Word! Sell Today!

VEHICLES & EQUIPMENT AUCTION

WEDNESDAY JUNE 2

Bidding starts to close at 10 a.m. CDT

Straight. Simple. Sold.®



IT9036 '17 Ford F450 Super Duty XL Crew Cab pickup

600+ ITEMS SELL NO RESERVE!



DI5597 '76 Ford Bronco SUV



FW9039 '62 Ford F100 pickup truck



FW9040 '65 Ford Thunderbird



HE9579 '97 Baja Outlaw boat



IR9920 '05 Bass Tracker PT175 boat



H09416 '17 Kioti Mechron 2200 utility vehicle



IY9684 '11 Dodge Ram 3500 Crew Cab pickup truck



GT9517 '13 Dodge Ram 2500HD Crew Cab pickup



IR9882 '01 Chevy Silverado 1500 bale bed pickup truck



IR9905 '05 Chevy Silverado 3500 Ext. Cab flatbed pickup



IR9926 '05 Peterbilt 357 water truck



IR9864 '94 Peterbilt 377 roll-off container truck



HR9249 '04 GMC C7500 forestry bucket truck



DY9684 '07 Isuzu NPR box truck



IR9879 '09 Ford F350 Super Duty truck cab/chassis



DJ8842 '03 Newmar Mountain Aire RV



IA9746 '06 Omega-lift 2215-8 forklift



IH9264 '14 Bobcat S450 skid steer



DL8061 '06 Genie Z45/25J boom lift



DK5657 '02 Toro Groundsmaster 4500D mower



DJ8440 '08 Maxey concession trailer



BID NOW!

purplewave.com

All items sold "AS IS." | 10% buyers premium applies. | Aaron McKee TX License #16401. | 866.608.9283

USED EQUIPMENT Eldon = EL Jefferson City = JC
See Complete Listing At www.crown-power.com

CROWN

Power & Equipment

Serving You In 10 Locations

3369 Hwy 52 W. Eldon, Mo
573-392-0230
SALES: (Ag) Gene Klein
And (Ce) Chris Scott

HAY/MISC.

New Holland H7550 Disc Bine 13' Flail
Center Pivot.....\$16,500.00 EL
Vermeer 505 Super M Net/Twine
.....\$12,500.00 EL

TRACTORS

Massey Ferguson 4253 Cab, 2WD, Loader
.....\$22,500.00 EL
IH 1086 Cab\$11,550.00 EL
Ford 3600 Diesel
.....\$5,450.00 EL

CONSTRUCTION

Kubota SVL95 Cab, Air, 750 Hrs
.....\$53,900.00 EL

3621 Rockport Hills Rd. Jefferson City, MO
573-636-5281
And (Ce) Joe Helming
SALES: (Ag) Clint Kohlmeier

TRACTOR

Massey Ferguson 1734E, 4WD Loader, 510
Hours\$18,480.00 JC
Farm Trac 8075DT, Loader, 780 Hrs
.....\$29,700.00 JC
Case CX70, Loader, 2WD, 2510 Hours
.....\$19,250.00 JC
JD 2355, Loader, 2WD,
4782 Hours.....\$17,600.00 JC

CONSTRUCTION

90837 Case 580 Super M
.....\$32,450.00 JC

HAY TOOLS

JD 457 Silage Special Net/Twine
.....\$15,400.00 JC
NH BR750 Net/Twine Silage
.....\$15,400.00 JC

LAWN

2011 JOHN DEERE X324 Riding Mower,
One Owner, 347 Hrs, All Wheel Steering,
Hydraulic Deck Lift, 48" Cutting Deck, Snow
Blade Attachment.....\$2,600.00 JC



www.crown-power.com

JOHN DEERE 21 HOLE GRAIN DRILL: \$1800.
(573)764-3078.

MAY LOGGING: We buy
standing timber. (573)247-
9710.

**FARM RAISED Border Col-
lie Puppies:** \$200. 573-680-
7794.

RHINOAG Deals



Hay Rake VR10

The VR hay rake is perfect for changing conditions and uneven terrain with its simple adjustments for windrow and working widths and independent spring suspension, which enables each rake wheel to work individually for a clean sweep. This V-Type rake is available in 8-, 10-, or 12-wheel configurations, and the rake sections fold horizontally over the carriage for narrow transport width and extra stability.

\$7,550



Teddies

PT207T \$3,150
PT405 \$5850

With lower horsepower requirements and operating speeds, a Rhino hay tedder is useful on a farm of any size! Our tedders have six steel tines on each rotor, with independent height adjustment for comfortable raking! All of this and the driveline are protected by Rhino's slipclutch system, ensuring less maintenance and repair on your part! Even our most basic Tedders are leagues ahead of the rest!



Finish Mowers

6ft FA613 \$2,950
7ft FA713 \$3,900

The FA Series Finishing Mower Series features a tapered, sloped discharge area to provide even distribution of cut material across the width of the mower. This allows for less clumping and windrowing than similar mowers that use chain guards or rubber deflectors.



R850 8ft Hyd Blade

Features include heavy-duty three-point hitches, reinforced mainframes, massive solid steel kingpins, precisely-formed moldboards, and mainframe swing, moldboard angle, and moldboard tilt adjustments for rugged durability and outstanding performance. The 850, 950 and 1540 blades are available with either manual or hydraulic adjustments to help fit a wide range of applications and needs.

\$3,850



Discs

6 1/2ft Disc \$1,950
8ft Heavy Duty Disc \$3,900
7 Shank Plow \$1,450

DIAMOND EQUIPMENT

4 MILES SOUTH OF WESTPHALIA ON HWY. 63
(573) 455-2617
WWW.DIAMONDEQUIPMENT.COM
SALES@DIAMONDEQUIPMENT.COM

GELBIEH BULLS: 18 Mths reds & blacks. Semen tested. LAWSON FARMS. Tuscumba MO (573)286-8822.

2007 DODGE 3500: 4 dr. white, Diesel, automatic, 4WD. Cannon ball haybed, excellent condition. \$25,000. (417)331-9500.

WATSON REG. POLLED HEREFORDS: Open & bred heifers. Service age bulls, semen tested. (417)962-3759. Cabool.

1986 ALLEGRO MOTORHOME: 27' bring gas, battery and drive home. \$1800 firm. (573)247-2825.

CHRISTOPHER S. DEATHERAGE, N.D.: Naturopathic doctor with 36 years clinical experience. Natural healthcare for children and adults. www.drdeatherage.com (417)683-1300.

WEHMEIER ANGUS: Yearling Angus bulls. Call (573)578-7434.

WILL BUY Vintage Sports Cards: Baseball, Basketball, Football. 573-680-1170.

Meadowview Dutch Market

Now Accepting
Credit And
Debit Cards
EBT Cards

Discount & Surplus Groceries • On The Country Road
Prices Subject To Stock On Hand - 417-993-3017

Tunas, MO • 3 Miles East On Hwy. E Off Of Hwy. 73 • Mon.-Thurs. 8-5 PM, Fri. 8-6, Sat. 8-5

Call To Order 417-993-3017 • **DELI SPECIALS!** **SALE DATE - May 26 To June 2, 2021**

Try Our Fresh Homemade Deli Sandwiches, Turkey, Ham, Roast Beef, Italian, BLT's, Pulled Pork And BLT Pulled Pork Or (Make YOUR Way!) (Come In Or Call To Order) Also Custom Made Deli Trays! Veggie Or Fresh Meat-N-Cheese

Cooked Salami.....Reg. \$4.49 Lb.....Sale \$3.99 Lb
American Cheese.....Reg. \$4.99 Lb.....Sale \$4.49 Lb

Get Out The Grill!

Pork Tenderloins Or Filet \$2.79 Lb

Beef Patties 4 Lb Box Only \$5.99 Ea

16 1/4 Lb Patties \$1.49 Lb

Pork Chops Smoked Or Seasoned \$1.29 Lb

Local Homemade Popcorn Great Variety \$2.19 8 Oz. Bag

Large Selection Of Flowers Great Variety 10% Off

Hanging Baskets, Planters, Single Pots & Much More...

Ice Cream Neopolitan 99c Ea 56 Oz. Great Flavor!

Fresh Homegrown Strawberries & Tomatoes

Fresh Fruits & Veggies

Florida Farm Fresh Cantaloupe Very Very Sweet!

Local Made Grilling Pellets 100% Natural \$11.99 20 Lb

Easy BBQ Charcoal 100% Natural Lump \$2.99 Ea 7 Lb Box

While Supplies Last!!

2008 CHEVY UPLANDER VAN: 157,000 miles w/only 59,000 miles on GM installed motor. \$3750. Call for pics (573)774-1123.

BE THANKFUL FOR WHAT YOU HAVE; you'll end up having more. If you concentrate on what you don't have, you will never, ever have enough.

JOHN DEERE 4020 D TRACTOR: 1970, one owner with JD 148 loader, good sheet metal, poor paint, 10,000 hrs. \$14,500. Call (573)881-3557.

TONGUE AND GROOVE CAR SIDING: Pine, Western Cedar and Red Cedar. www.pineridgerustic.com, (573)729-7226. Salem

NEW HOLLAND 352 GRINDER MIXER: One Owner, Right Out Of Owner's Shed, Has Auger Feeder, Extended Unloading Auger, Extra Screens, Tested - Runs Smooth And Quiet. \$4,950. Call (573)881-3557. **B21**



THE RUSTY ROOSTER MARKETPLACE (417) 718-9136
ANTIQUES • SECONDHAND • VINTAGE
208 W. Commercial Lebanon, MO
Come Celebrate With Us!! Refreshments 11 A.M. - 2 P.M. **JUNE 4 & 5 Birthday Bash!!** We Are Turning "One"!!! **20% OFF Single Item!!** Customer Appreciation days!!

RED HEELER Pups: 7 Weeks Old. 573-346-2326 Please Leave Message.
STIREX DM-DISC MOWER: 9', like new, \$4750. Call (573)881-3557.

POOL TABLES: Installation, recovers, moves, repairs, etc. (573)646-1700.

GAITED BROODMARE: 15 years old, \$750. (573)437-3590.

MISSOURI LAND COMPANY
Farm, Home & Hunting Properties

Your Land & Farm Experts!

14981 Centerline Ave. • Cole Camp, MO 65325
660-668-4868 • 844-974-1850

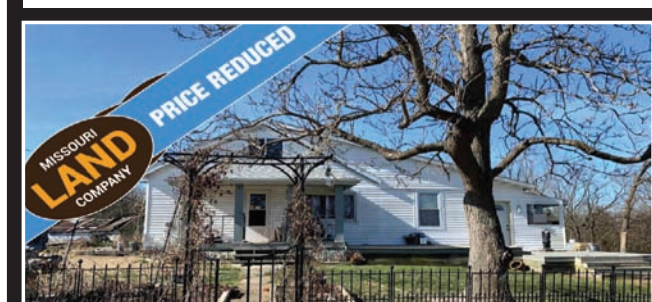
12647 S. Hwy 63 • Rolla, MO 65401
573-308-4868 • 844-974-1850

www.MissouriLandCompany.com



MARIES CO - 426 ACES - \$1,065,000

Located down a quiet gravel road in Southern Maries County is where you'll find this 426 acre piece of heaven. Whether farming is your passion or an avid hunter, this property has the best of both worlds. The property features around 250 acres of open pasture, 2 creeks, well, electric, 4 ponds, a spring, cross fenced and ready for you to use. Water on this place is not a problem! Currently being used as a cow/calf operation and fertilized yearly, makes there no shortage of established pasture. For the hunter, there are several bottom fields, long ridge fields and perfect sized patches of timber giving numerous pinch points, perfect for stand locations. Several turkeys were spotted while viewing along with bobwhite quail and several buck rubs. With large tracks in this surrounding area, mature whitetails and turkeys thrive. Located 45 miles from Jefferson City, 35 miles from Rolla and a short 15 miles from Vienna, puts you out in the country with all amenities within a reasonable distance. **For more information or private showing, contact Robert Baker @573-855-3442 or rbaker@missourilandco.com**



MILLER CO - 27 ACRES - \$189,000

Located less than 10 minutes from the swinging bridge over the Grand Glaize arm of the Lake of the Ozarks, this 27 acres and home can be yours before the spring white bass run and crappie spawn. The home has had a recent remodel which also included new shingles in January of 2018. Three bedroom, two bath with plenty of storage space on the main level and an attic that is currently used for storage but could easily be a fourth bedroom. A twenty by twenty all metal shop/storage building and a thirty by thirty garage with concrete floor and electric. Across State Hwy C from the home you will find twenty five acres of Deer and turkey woods with cedar bedding areas, open ground for food plots, wet weather creek, three small ponds, and mature white oaks on a north facing hillside that will be a hotspot when the acorns fall. The owners have taken many nice Deer over the years on this property and mentioned seeing eight Deer in the adjacent bottom field the morning I was there to view the property. I saw a good amount of turkey scratchin', so this could be the spot to call Ol' Tom to the gun in a few months. Ideally situated only 4.5 miles from the Swinging Bridge over the Grand Glaize arm of the Lake of the Ozarks, 14 miles to Bagnell Dam, 39 miles to Fort Leonard Wood, 48 miles to Jefferson City, and only 90 miles to Springfield. **Properties like this are getting hard to find, call or email Danny L. Miller for a scheduled showing at 573-528-1489 or dmiller@missourilandco.com**

- THE MARKET IS HOT WE HAVE MORE BUYERS THAN SELLERS!
- INTEREST RATES STILL AT AN ALL TIME LOW!!
- Let Our Nationwide Marketing And Our Land Specialist Work For You!



ST. CLAIR CO - 1.5 ACRES - \$149,000

Big trees surround this home on a paved road on the north-eastern side of Osceola just on the outskirts of town. Located within 2 miles of Truman Lake's Crowes Crossing Public Use Area with Boat Ramp. This 2 Bedroom, one bathroom, approximately 1100 square foot ranch style home sits on approximately one and a half acres. Kitchen comes with a refrigerator, built in microwave, double oven and a gas range with double doors walking out to a nice sized covered deck with a ramp. A deck also greets visitors at the entry to the home. The home is predominately paneling throughout, has a well, newer septic system, Buck Stove/fireplace, propane furnace and air. The carpet is in good shape, the living room and dining area are open with a nook that leads to the garage. There is a newer handicap shower installed in bathroom. Three hallway closets for storage and an attic fan to enjoy the cool spring breeze. The home has a one car attached garage with entry to the full basement. There is also a shower, water filter, water tank, furnace, and water heater in the basement. The property has several outbuildings, including a 40x26 insulated garage with power and concrete floor; an 18X40 equipment shed with power, and an additional 3 miscellaneous storage sheds. The home needs updated, has some foundation issues (foundation cracks, slight leak shown in pictures), slight leak in detached garage (shown in picture) the seller has not lived in the home and is selling this property AS-IS, buyer should exercise due diligence, the seller will not make repairs. Property to be surveyed by seller. Property sits at the corner of NE 400 Rd and NE 475 Pvt Rd. About an hour South to Springfield, MO and an hour and 3/4 to KC. **Must have appointment to view or access the property, please contact Pam Bollinger at 816-769-5076.**

2021 Has Started Off As Busy As We Left 2020!
We Are Putting Under Contract Properties As Fast As We Can List Them! We Are Averaging 30+ Under Contract Consistently Every Month!
If You Are Thinking Of Listing Your Property Give Us A Call Today!
844-974-1850

We're Shouting It Out!

UPCOMING SPECIAL SECTION

Call For Special Pricing!

Business Card Directory

2nd Week Of Each Month

FOR SALE: 1 Year old laying hens, 30 hens. \$6 A piece. (573)205-6954.
FOR SALE: NH 617 Disc mower, 9'2" cut. Good, \$4250. (573)732-5931. Bourbon.

Zimmerman's Produce
Fresh Asparagus, Strawberries, Onions, Lettuce

Hanging Baskets • Bedding Plants & Vegetable Plants • Annual • Perennials • Herbs
 Fresh Eggs • Local Grown Green House Tomatoes • Planters • Roses

Location 2-1/2 Miles North At The 5 & 52 Jct. Right On Hwy. 5 North Of Versailles. Open Daylight To Dusk (Closed Sunday)
13874 Hwy. 5 • Versailles 573-378-6442

BUYING STANDING TIMBER: Chris Smith Logging. (573)762-2850.
BLACK TWH: Mare, 19 years old, 16 hands, gentle to ride, \$1000. (573)437-3590.

EZ HAUL
For All Your Hay Hauling Needs!

Like Us On facebook

36 Ft. - \$4,922 • 32 Ft. - \$4,822

JIM'S Motors TRAILERS
 I-44 at Exit 208 • Cuba, MO
www.jimsmotors.com
 (573) 885-2595
 (800) 897-9840

GREAT SERVICE!
1957-2018 GREAT PRICES!

RANGER TRUCKS AND TRUCK PARTS: We buy & sell Rangers, Escapes, Focuses and related. (573)793-2699.
40' STORAGE TRAILERS & CONTAINERS: for rent. Delivery extra. (636)583-8077. Union.

HARRISON FISHERY
POND & LAKE STOCKING
 Call us today! 660.423.5482
 curtis@harrisonfishery.com • www.harrisonfishery.com

660-423-5482
 Contact us for price & delivery.

Spring is a Great Time to Stock Your Lakes & Ponds!!
Come see us for Freshwater, Game & Baitfish.

Species Available: Large mouth bass, hybrid bluegill, bluegill, redear sunfish, black crappie, fathead minnow, walleye, muskie catfish, golden shiners and more!

Time to gather up the little ones, get their fishing poles and go enjoy a day of fishing!

FOR SALE: Gotway M Super X Electric Unicycle, 84 volts, 1600 watts, speed 35 m.p.g., 50 mile range on one charge, max weight 260 lbs. \$1000. Call (573)502-3566.
LIMOUSIN & LIM-FLEX BULLS FOR SALE: Polled, black, Homozygous black, all semen tested. HOWELL FARMS (573)774-5591 or (573)433-9911.

LOW MILES DIESELS!!

2018 DODGE RAM 3500
 Cummins Turbo Diesel HD, Crew Cab, 4x4, Black Night, Loaded, Only 49,xxx Miles, \$62,995

2017 FORD F-350
 Texas Edition, 6.7 Diesel, XLT, FX4, Dually, Crew Cab, 4x4, Air Ride Hitch, Like New, Only 28,xxx Miles, \$59,950

BOURBON RV Center
 I-44 • Exit 218 Bourbon, Missouri
 636-667-9476
 573-732-5100
We're just a short drive from high prices!
 Ask For Matt (Sales Manager) www.bourbonrv.com

BE THANKFUL FOR WHAT YOU HAVE; you'll end up having more. If you concentrate on what you don't have, you will never, ever have enough.
2006 FORD F350 XLT CREW CAB: 4WD, diesel, 6 spd. Deweez hay bed. White, one owner, excellent cond. \$19,000. (417)331-9500.

THORNHILL AUCTION

Having retired from my trucking business, we've sold our location and will sell all the following at Public Auction on.....

Wednesday, June 2, 2021 • 9:30 A.M.

SALE SITE: 5937 Hwy N; Cottleville, MO 63304

DIRECTIONS: From Wentzville, go south on Hwy 61 to MO 364 Exit 4B, go 4.5 miles to Hwy K Exit 4, turn left on Hwy K and go ½ mile to right on Hwy N, go 2 miles to #5937 Hwy N on the left, follow lane to sale.

YAMAHA RHINO & HAY WAGON SELL AT 12:30 P.M.: 2005 Yamaha Rhino 660 w/cab, snow plow & AM/FM stereo (new engine, approx. 2yrs old), nice unit; Hayride wagon, used on Rhino; 5' front-mount blade.

BASS TRACKER SELLS AT 12:30 P.M.: 1988 Bass Tracker Tournament TXS, 17' w/Mercury Classic 50 outboard & Tracker marine trailer w/titles, kept in garage, nice unit.



ANTIQUE COLLECTOR'S CAR SELLS AT 12:00 NOON: 1957 Fairlane 500, retractable 292 automatic, bought in 1973, all original, new tires, show room.

COLLECTOR'S DUMP TRUCK SELLS AT 12:00 NOON: 1936 Ford V8, 2-ton dump truck, 4-speed w/9' dump bed, restored, super pc. (This was Joe's grandpa's truck. He started his trucking business Ace High Trucking in 1936.)

ROAD TRACTOR SELLS AT 12:30 P.M.: 1984 Ford road tractor w/350 cummings & 9-speed, has title, not transferrable, used on site to move trailers.

TRAILERS: 2002, 12' tilt-top single-axle trailer; Job site 2-wheel trailer, no title. T-50-C CATERPILLAR PROPANE FORKLIFT W/2 TANKS, NICE UNIT SELLS AT 12:30 P.M.

WELDERS: ESAB-PCM-1125 portable plasma cutter; Gunslinger 260 Panasonic welder; Lincoln SP 125 Plus electric welder; Lot welding supplies.

POWER PLANT 4,000 OINI W/TRAILER, GOOD UNIT

LAWN & PARTY FURNITURE: 3, 10'x20' white tents w/side skirts; 1, 10'x10' white tent w/side skirts; 40+ white Lifetime fold-up chairs; Lot white Lifetime 8' fold-up tables; Lot coolers.

220 CARRIER PORTABLE FURNACE/AIR UNIT

SHOP TOOLS: Craftsman roll-around tool cabinet; 2, stainless steel workstation/tool cabinets on rollers; Lot air hose reels; Ridgid Scout Sonde line detector; Cal Hawk deep socket impact sockets; ½" dr. universal socket sets; 12v, 20 GPM fuel tank w/pump; 3-ton roll-around floor jack; AC Delco cherry picker; Transmission jack; 1,000lb engine stand; 1,500lb cap. Floor-model jack; Large roll-around floor jack; Large parts bin w/N.O.S.; 2" water pump w/2" hose; Craftsman 10" table saw, floor-model; Sand blaster; 1 set scaffolding; Ratchets, brake over bars; MM & Standard sockets; 7pc. metric 3/8" dr., universal impact socket sets; Pry bars; Lot channel locks; Lot vise grips; 45pc. tap & die set; Lot welding clamps; Lot C clamps, most sizes; Wheel pullers; ½" dr. deep impact socket sets; Shop fans; 3-ton jack stands; Ridgid finish nailer; Black & Decker sawzall; Prototek BuzzBox; Trades Pro 24v impact; DeWalt cordless ½" drill, hammer drill; Lot electric supplies; Ridgid 16gal, 6.5hp shop vac; Central 8" bench grinder; Large assortment air tools; Large lot log chains; Large lot load binders; Lot chisels, punches, etc.; Ridgid 18v power tool set; Husky 28pc. combo wrench set; Combination wrench sets; Oil drums & rack; Open-end box-end wrench sets; Lot air grease guns, some cordless; Trailer bracket for acetylene set; Step & extension ladders; Ridgid pipe wrenches, up to 48"; Lot tire & truck tools; Metric impact socket set; Lot hardware: hydraulics, brakes, grease fittings, cotter pins, etc.; Set gear wrenches; Set rapid reverse wrenches; Partial list.

LOT TRUCK TIRES: 11-22-5 & 12-22-5

LARGE LOT DUMP TRUCK PARTS - AIR & OIL FILTERS, ETC.

LOT 2'x12'x16' WOODEN DECKING

FIREARMS SELL AT 11:30 A.M.: Smith & Wesson 22LR pistol; Mountain Eagle 22LR pistol; Harrington & Richardson 20ga shotgun; M24-47 Belgium 8mm rifle; Turkish 8mm rifle; Harrington & Richardson 12ga shotgun; Mossberg 410 shotgun; Marlin 22LR rifle; Winchester model 120, 12ga pumps shotgun; Ruger 1022, 22LR rifle; ALL FFL LAWS APPLY.

AUCTIONEERS NOTE: Joe started in the trucking business 45 years ago. He took over the family business 43 years ago. Here's a really nice line of shop tools along with collector's car & family restored dump truck. Plenty of off road parking. Bring your trailers. David, Dusty & Bill

OWNER: JOE MANNINO

AUCTIONEERS:

DAVID THORNHILL TROY, MO. 314-393-7241	DUSTY THORNHILL TROY, MO 314-393-4726	BILL UNSELL FRANKFORD, MO 573-470-0037
--	---	--

All buyers will be photographed. Terms: Cash or Good Check with Current Photo I.D. Troy Office: 636-366-4206. For full listing & terms of this auction - www.thornhillauction.com

TINY HOMES: You gotta see these!!! in Ashland. amegamobilehomes.com (573)657-2176.

LOG SIDING: 2x8 Pine/Wester Cedar. pineridgerustic.com (573)729-7226. Salem.

JOHN DEERE 275 DISC MOWER: Low acres, good tarp, \$5950. Call (573)881-3557.

DAVIS BOAT REPAIR: Custom aluminum boat repair. jet parts and repair. Dixon. (573)759-6153.



LAND AUCTION

SATURDAY, JUNE 12 @ 10:00 AM

BRAZITO - HONEY CREEK LIONS CLUB

3220 STATE HWY E, JEFFERSON CITY, MO 65101



Directions to the farm: From Hwy 54W to Rt E to Deer Run. Farm starts at corner of Deer Run & Landing Creek Road.

**LAND VIEWINGS
MAY 20 & MAY 27
5:00 PM - 7:00 PM**

SELLERS: WILBERS FARM

13 Tracts range in possible sizes as small as +/- 6.3 acres and as large as +/- 25.4 acres. Final total acreage to be based on final survey after auction is complete. Restrictions to be recorded on all tracts prior to closing. Gravel road off Deer Run will have easement recorded and all adjacent lot owners will share in maintenance of the road. Property in Eugene School District.

**AUCTIONEERS NOTE:
WE WILL SELL THE PROPERTY BY THE
SURVEYED ACRE USING THE CHOICE METHOD.**

SURVEY: All surveys will be completed after the auction and prior to closing. The estimated acreage per tract, as advertised, along with the sales price per acre bid at the sale, will be used on the contracts. Contracts will be amended, after final survey, to reflect the bids, at the sale, per acre and final acreage amount. If a buyer buys multiple tracts, they will receive one legal description with a boundary survey of all tracts purchased, so long as they are adjacent tracts.

GO TO CALLGRATZ.COM FOR MORE INFO

TERMS and CONDITIONS: 5 (Five) percent of purchase price to be paid into escrow on the day of auction. Cole County Abstract Company will be the escrow agent. Buyer must be preapproved by their lender and have a pre-approval letter from Bank to present to Gratz Real Estate & Auctioneering on day of auction. Buyer must sign a sales contract prepared by legal counsel. Closing will be held within 60 days of auction date &/ after survey is complete. The cost of the title insurance will be split equally between the buyer and seller. Taxes will be pro-rated at closing. Owner agrees to give possession and clear title at closing. Announcements at Auction take precedence over all printed matter. Owner reserves the right to accept or reject the final bid. (For an appointment to view the property prior to auction, call Bill Gratz at 690-0477 or Logan at 690-0296.) Auctioneers are licensed in Cole County, Missouri.



GRATZ REAL ESTATE & AUCTIONEERING

BILL GRATZ - 573-690-0477 CRAIG GRATZ - 573-694-3001 LOGAN GRATZ - 573-690-0296

AUCTIONEERS

5718 Wardsville Rd, Jefferson City, MO 65101 Office - 573-635-4168 www.callgratz.com

DARDEN PROFESSIONAL TIMBER HARVESTING: Buying Standing Timber. Great prices, improve wildlife habitat and improve forest health. State certified and fully insured. (573)247-4808 or (573)739-1122.

100% CEDAR Mulch. 573-422-3455.

FOR SALE: 93 Chevy Club Cab, Strong 350 Engine, Auto Trans, \$1,250. 1998 Mitsubishi Spyder Convertible, 5 Spd, Runs Great, \$2,200. 72 AMC Javelin, All Original, \$5,800. Terry Manor Pull Camper, \$2,500. Call 573-645-0733 or Stop 7646 Herritage Hwy.

I BUY: Used mobile homes. Call or text (573)338-6250 or email GregS.CDH@outlook.com

ANGUS BULLS FOR SALE: Red & black, 18-27 months, pasture raised, gentle, easy calving sires, vet tested & vaccinated, \$1,875. BarNone Ranch. Sullivan. (636)629-3356, (314)580-8601.

FOR SALE: White tractor 2-135 2WD, 135 h.p. 3460 hours, 2nd owner, new AC in 2020, new rear rubber in 2019 18.4x38 new batteries. Kinze 4 row 30" no till planter with fertilizer boxes, heavy duty. (573)764-3092. Rosebud.

BLACK 5 YEAR OLD GAITED GELDING: 14 hands, \$3500. (573)437-3590.

Whether you are buying or selling, the Ad Tracker will work for you!

RED ANGUS X HEREFORD CROSS: Bred heifers for sale. Start calving September through October. Fancy set of heifers. Two registered Angus bulls. 2 2/12 years old. More information, Licking, MO 573-674-2792.

23101 HWY. 24 | PARIS, MO 65275

ANGUS BULLS NOW AVAILABLE!

Bred for

- Easy Fleshing Ability
- Calving Ease
- Good Feet & Legs
- Disposition
- Performance
- 100% Guarantee

Developed for

- High Percentage
- Roughage Diet
- Low Corn Input

All bulls have been semen tested and guaranteed to be sound breeders!

Delivery Available!

*Owned and Operated by
Chas, Misty,
Rance and Ross Wheeler*

Leasing Available

CHAS WHEELER 573-473-2508	MISTY WHEELER 573-473-8208
ALLEN ROBINSON 573-220-1096	STEPHANIE ROBINSON 314-210-2046

FIREARMS AUCTION

Saturday, June 5th, 2021 • 10:00 AM
Preview Friday, June 4th, 2021 • 6:00-9:00 PM

The Red Shed

I-44 To Exit 179 • 169 Truman St • Doolittle, MO

Selling 320 Firearms, With Ammo And Miscellaneous

For a complete sale bill and pictures of each gun, go to auctionzip.com. At the bottom of the page, enter auctioneer ID #28053. Pictures also on HiBid.com

J & J Sales, LLC

573-341-5450 Office jjsalesllc12@gmail.com 573-465-0642 JD Roach, Auctioneer

TINY HOMES: You gotta see these!!! in Ashland. amegamobilehomes.com (573)657-2176.

YOUNG BLACK BULL: Ideal for heifers. \$1200. (573)437-3590.

RED ANGUS X HEREFORD CROSS: Bred heifers for sale. Start calving September through October. Fancy set of heifers. Two registered Angus bulls. 2 2/12 years old. More information, Licking, MO 573-674-2792.

WANTED: JD 1508 parts mower. (314)393-6030.



Iberia & Brumley Is Hosting A Community Yard Sale On..

Thursday, June 10th 3 PM-7:30 PM Friday, June 11th 6:30 AM-5:30 PM

Over 28 Locations!

Grab An Ad Tracker Next Week To See All The Locations!

JOHN DEERE 709 BRUSH HOG: New clutch, no welds, \$2150 or Woods 6' Brush hog, slip clutch, \$1550. Call (573)881-3557.

RETIREMENT FARM AUCTION
1561 HWY 3 - ARMSTRONG, MO
THURSDAY, JUNE 3, 2021 @ 10 AM
AI & Deb have sold their farm and will sell all their equipment and livestock handling equipment at public auction.



FOR SALE: Gotway MSuper X Electric Unicycle, 84 Volts, 1600 Watts, Speed 35 MPH, 50 Mile Range On One Charge, Max Weight 260 Lbs. \$1,000. Call (573)502-3566.

INTERSTATE Regional Stockyards, Inc.
I-44 & Hwy. DD - Cuba, MO
(573) 885-7431
www.irslivestock.com

FEEDER CATTLE AUCTION Tuesday, May 25th, 2021

Cattle Receipts: 1,665 • Week Ago: 1,157 • Last Year 417
Compared to last Tuesday, feeder steers under 550 lbs steady to 2.00 higher, over 550 lbs 2.00-6.00 higher.

Table listing various cattle weights and prices, including sections for FEEDER STEERS, MEDIUM AND LARGE 1, MEDIUM AND LARGE 1-2, and HEIFERS.

BUFFALO LIVESTOCK MARKET LLC
Hwy 32 West, Buffalo, Missouri
May 22nd, 2021 Receipts 816 Head Feeders Steady \$5 Higher
Listings for Steers, Heifers, Feeder Bulls, and Bulls.

SPECIAL COW SALE Thursday Night June 3, 2021 At 6:00 p.m.
Callaway Livestock Center, Inc. Kingdom City, MO • 573-642-7486

Callaway Livestock Center, Inc. Kingdom City, MO • 573-642-7486
Feeder cattle sale every Monday: 12:00 NOON. Slaughter Steers & Heifers Sell First
FEEDER SALE REPORT MONDAY, MAY 24, 2021

WANTED: Horses, saddles, tack, horse trailers. (314)808-4576 or (314)570-2639. NEW HOLLAND 616 DISC MOWER: 7', no welds, \$3950. Call (573)881-3557.

NOW IN STOCK

- Bareroot Strawberry Plants
 - Junebearing Varieties
 - Honeoye & Barliglo
 - Everbearing Varieties
 - Seascape
- Purple Passion Asparagus Crowns
 - Happy Frog Potting Soil
- 3 cu ft Cotton Burr Compost
- 1 cu ft Bag Of Organic Top Soil
- 1 cu ft Bag Of Blue Bird Compost

MORGAN COUNTY SEEDS LLC
 18761 Kelsay Rd. Barnett, MO 65011
 573-378-2655 www.morgancountyseeds.com
 OPEN: Monday Thru Saturday • 8am-5pm
 Fridays Open Until 6:00 PM
 From Versailles, Take Hwy 52 East To Hwy C East To Kelsay Rd. 1.3 Miles North On Kelsay Rd. Or 1 Mile Past Dutch Country Store.

PIPE & SUCKER ROD & CUT POST: Different sizes. (573)578-2687/ (573)422-3735. TINY TINY TINY: Homes homes homes, Call Marla (573)657-7040. chateauhomes.net

REAL ESTATE AUCTION
LARRIE & GAIL FITZWATER
 88 Payton Place (Dodds Camp) Climax Springs, MO 65324
 Mr. & Mrs. Fitzwater owner financed & sold this property only to repossess it in the current condition, their loss is your gain the structures appear to both be basically sound each with its share of cosmetic damage. A little TLC will go a long way.

Sunday, May 30th, 2021 • 3:00 PM

Directions: From Climax Springs go East on 7 hwy 3 miles to Z hwy. Turn Left (North) on Z hwy go 2 1/2 mile to Coffman Bend Dr. Turn Right on Coffman go 1/2 mile, bear right onto Dodds Camp Rd. go 1 1/2 mile turn Right stay on Dodds Camp Rd. 200 ft. to Payton Place on Left, Home on Right. (Watch for signs)




Real Estate Terms: 10% Nonrefundable Escrow down day of Sale, to close 30 days if not sooner, Taxes Prorated, Seller to Provide Title Insurance. All inspections & financial arrangements to be finalized Prior to sale time, Sale not Conditioned upon Finance. Seller reserves the right to accept or reject any bids, Will co-broke with licensed realtor to register qualified buy 24 hrs prior to sale time.

Real Estate - Lake home with guest house & single bay Covered dock, Lake access & dock are within easy walking distance. Main home is 1,891 sft. 2 - bedrooms, Single bath wide open floor plan & sunroom has a large two car attached garage & 4 yr. old metal roof. Guest house is 595 sft. 2 - bedrooms single bath with open kitchen / living room area, Both homes on private well & septic also one electric meter for both homes.

Auctioneer Note: This is not an absolute Auction but the owners absolutely want to sell & are ready to see it move.

Johnson Auction Service
 "Third Generation Family Tradition since 1942"
 Russell "Rusty" Johnson (660) 221-4067
 Phillip Yoder (660) 723-3389

Live Online
PUTNAM COUNTY, MISSOURI
LAND AUCTION
THURSDAY, JULY 1 @ 1:00 P.M.




37± ACRES
 (SUBJECT TO SURVEY)
 1 TRACT

Open House: Saturday, June 19 • 12 Noon to 1:00 PM

Land is located in Section 34, T66N•R19W, Union Township, Putnam County, MO. Excellent improved pastureland/hay ground located on the west edge of Unionville, MO situated along Hwy. 136. Farm is improved with an older home & multiple outbuildings.


STACY HAMILTON AND NEVIN HAMILTON
 CLOSING & TITLE WORK BY: Hart Abstract & Title, LLC
 2308 Main Street | Unionville, MO 63565

AUCTION MANAGER: Bill Fretwell (660) 341-7735
 SULLIVAN AUCTIONEERS, LLC • TOLL FREE (844) 847-2161
 www.SullivanAuctioneers.com • IL Lic. #444000107




THM
 LAND & CATTLE
 at the farm in Bay, MO

Location: 2210 Brown Shanty Rd, Bay MO 65041
 From Hwy 50 take Hwy K North to the town of Bay. Go East on Hwy W to the first gravel road on the left. Head North on Brown Shanty Rd until you come to the THM Land and Cattle sign on your right.



Owners:
 Travis and Naomi McGee
 573-489-3311

Range Boss:
 For farm visits contact
 Greg Pohlmann 573-645-7066



ANGUS BULLS
AVAILABLE
NOW!


Videos Online www.thmcattle.com

BLACK TWH: Mare, 19 years old, 16 hands, gentle to ride, \$1000. (573)437-3590. **BUYING STANDING TIMBER:** Chris Smith Logging. (573)762-2850.

WANTED HAY TO CUT: Within 50 miles of Salem. Buy standing in field or cut in shares. Also custom harvesting of your hay, 4x5 round or small square bales. Green Meadows Farm, (573)247-8055. **6 MIXED COLOR HEIFERS:** 1 baby calf, young black bull, \$8500 for all 8 head. (573)437-3590. **WILL BUY Vintage Sports Cards:** Baseball, Basketball, Football. 573-680-1170.

Live Online
MAJOR MISSOURI
LAND AUCTION
THURSDAY, JUNE 24 @ 10:00 A.M.

Clark, Harrison and Livingston Counties, Missouri
2,000 ACRES± • 18 TRACTS



- EXCEPTIONAL INVESTMENT OPPORTUNITY!
- PRODUCTIVE TILLABLE CROPLAND!
- WELL MAINTAINED CRP!
- HUNTING/RECREATIONAL ACREAGE!

Farm is located in Sections 15, 19, 20 & 21, T65N • R6W, Des Moines Township, Clark County, MO; Sections 16, 20, 21, 22 & 30, T64N•R29W, Dallas Township, Harrison County, MO; Sections 18 & 19, T57N•R22W, Wheeling Township, Livingston County, MO.

THE LATE BRINES AND BETH STRONG FARMS
CUTHBERT M. STRONG FAMILY TRUST
CUTHBERT STRONG ESTATE

ATTORNEY: DAVID ROUNER | ROUNER LAW OFFICE
 400 N. FRANKLIN STREET | KIRKSVILLE, MO 63501 | (660) 665-7515

CLOSING & TITLE WORK: OAK HILLS TITLE CO. | CANTON, MO
 GRAND RIVER TITLE, INC. | BETHANY, MO
 LIVINGSTON COUNTY TITLE, LLC | CHILLICOTHE, MO

AUCTION MANAGERS: Bill Fretwell (660) 341-7735
 Dan Sullivan (319) 795-1833 | Joe Sullivan (844) 847-2161
 SULLIVAN AUCTIONEERS, LLC • TOLL FREE (844) 847-2161
 www.SullivanAuctioneers.com • IL Lic. #444000107

Live Online
KNOX COUNTY, MISSOURI
LAND AUCTION
THURSDAY, JUNE 24 @ 5:00 P.M.
60± ACRES • SELLING IN 1 TRACT



Open House
 Saturday, June 12 • 11:00 AM to 2:00 PM

Farm is located 4 miles north of Edina, MO in Section 32, T63N•R11W, Knox County, MO. From Edina, MO take Hwy. 15 north approximately 3 miles to Poor Farm Road, then east approximately 1 mile to Eagle Avenue, then north 3/4 mile to farm.

BE SURE TO CHECK OUT THIS EXCEPTIONAL WELL MAINTAINED FARM!

TOM AND JANIE KURTH
 Title Work By: Knox County Abstract
 103 S. First Street | Edina, MO | (660) 397-3259

AUCTION MANAGER: Bill Fretwell (660) 341-7735 & Dan Sullivan
 SULLIVAN AUCTIONEERS, LLC • TOLL FREE (844) 847-2161
 www.SullivanAuctioneers.com • IL Lic. #444000107

★ American Made Metal Roofing ★

40 Year Warranty Metal\$2.79/LF (\$87.19 Per Sq.)

* 29 Gauge 10 Year.....(\$2.59/LF (\$80.94 Per Sq.)

****While Supplies Last****

29 Gauge #1 Galvalume....\$2.09/LF (\$65.31 Per Sq.)
26 Gauge 40 Year (Warranty Metal)....\$3.55/LF (\$110.94 Per Sq.)

Building In A Box
Stud Wall & Pole Barn Kits

24x30x8 - \$6,085.00
30x40x10 - \$8,850.00
30x60x10 - \$11,890.00
30x60x12 - \$12,320.00
95 % Precut
Material Surcharges May Also Apply

★ 17 Colors To Choose From
★ 20 Years In Business
★ We Manufacture Our Own Metal and Trusses

3 Locations To Serve You!

202 S. Prigmore Ave Joplin, MO 417-553-8697	1100 Pace Rd. Pocahontas, AR. 870-609-1900	35 Killdeer Rd. Seymour, Mo. 417-952-7143
---	--	---

*possibly not American made Prices Always Subject To Change.

BULLS FOR LEASE: Over 70 registered Angus & Hereford to choose from. 90 day lease \$900. Trucking available for extra charge. (573)999-3197, Kingdom City, MO.

COMMERCIAL TRUCK INSURANCE: Competitive Rates, specializing in long haul, dump trucks, log trucks and delivery. Call 573-244-3377 for professional service.

RANGER TRUCKS AND TRUCK PARTS: We buy & sell Rangers, Escapes, Focuses and related. (573)793-2699.

BUYING & SELLING: Used mobile homes, move and set-up available. For inventory or to sell us your home call (636)583-8686 or visit www.eastcentralmoilehomes.com

WANTED TO BUY: Standing timber. Call GARRIOT'S LOGGING, serving Mid-Mo. over 30 years. (573)220-1907 or (573)290-0527. garriottlogging.com. Fulton.

PIPE & SUCKER ROD & CUT POST: Different sizes. (573)578-2687/ (573)422-3735.

JOHN DEERE #40 MANURE SPREADER: Always shedded, real nice, \$3250 or JD 370 spreader, hydro drive, with end gates, \$3950. Call (573)881-3557.

Gooseneck and Winchester Star pipe cattle trailers the best in the business here and ready...

**10% Down
\$152 Per Mo
60 Month w.a.c
\$8,900**

Cowtown USA
I-44 Exit 203 • 413 Daniels Rd.
Cuba, MO • 573-885-6300
www.cowtownusainc.com

DAVIS BOAT REPAIR: Custom aluminum boat repair, jet parts and repair. Dixon. (573)759-6153.

40' STORAGE TRAILERS & CONTAINERS: for rent. Delivery extra. (636)583-8077. Union.



JOHN DEERE 6145 M TRACTOR: MFWD, 2485 Hours, New Rubber, 4 Door, Triple Hydr, 16 Speed, \$69,500. Will Trade. Call (573)881-3557. **B21**

WE BUY "JUNK" CARS & TRUCKS: Call SORRELL'S AUTO & TRUCK PARTS. (573)445-4451. Columbia.

USED PIPE FOR SALE: 1", 2", 2 1/2", 3", 4", 7" in stock. Call 8-5, (573)369-2438. Tusculumbia.

NOW HIRING
For Fabrication

- Full or part-time
- Great environment
- Competitive wage, benefits & retirement

Call 800.948.0044
or send resume to
hillary.ward@jcfinley.com

JCFINLEY COMPANY
DISTRIBUTOR & FABRICATOR OF PLASTICS

Sunshine Foods LLC

Deli • Bakery • Surplus Groceries • Bulk Foods
19532 Hwy C, Barnett, MO 65011
Between Versailles & Highpoint On Hwy C

Oven Roasted Split Turkey Breast \$1.49 lb Approx. 5 lbs	Whole Pitted Dates \$1.49 lb	80/20 Ground Beef \$6.25 3 lb
JD Applewood Smoked Bacon \$3.75 16 oz	Mild Cheddar Cheese Sticks 10 For \$10.00 \$14.25 cs 160 ct	Vanilla Ice Cream Crunch Bars \$2.49 15 oz
Nuts And Chocolate Trail Mix \$1.25 6 oz	Crafted Uncured Suppressata Plate 99¢ 2.75 oz	Brownie Crunch Cereal \$1.49 19 oz

DELI SPECIAL
Farmers Cheese
Was \$4.49 lb...NOW \$3.49 lb
Regular Lebanon Bologna
Was \$6.59 lb...NOW \$5.59 lb
Prices Good Thru June 1st
While Supply Lasts

We Now Accept EBT
M/C, Visa, Discover
573-378-6500

Store Hours:
Mon-Sat 8 AM-5 PM
Fri 8 AM-7 PM
Closed Sunday

Check Out Our Pallet Areas For Even Larger Savings On Case Quantities

HATS OFF TO THE GRADUATES!

Wishing you all the best on your graduation day and in all your future endeavors. Congratulations to the Class of 2021!

0% APR* | 60 MOS. + \$3,250 CASH BACK off MSRP*
FORD CREDIT FINANCING*

OR \$6,000 CASH BACK off MSRP*

On Select NEW 2020 Ford Edge Models

0% APR* For 72 MOS.
FORD CREDIT FINANCING*

On Select NEW 2020 Ford Escape Models

\$1,500 CASH BACK off MSRP* + \$500 Ford Credit Bonus Cash

On Select NEW 2021 Ford F-150 Models

\$3,750 CASH BACK off MSRP* On Select NEW 2021 Ford EcoSport Models	\$2,000 CASH BACK off MSRP* On Select NEW 2021 Ford Escape Models
---	---

\$2,000 CASH BACK off MSRP* + 0% APR* | 60 MOS.
FORD CREDIT FINANCING*

On Select NEW 2020 Ford Escape Models

\$2,750 CASH BACK off MSRP* + \$1,500 Ford Credit Bonus Cash

On Select NEW 2021 Ford Expedition Models

SAKELARIS

MOST MONEY FOR TRADE-INS IS RIGHT NOW!

Sakelaris Ford Lincoln offers Pick Up & Delivery Service for all Sales & Service!

*Must finance through Ford Credit Financing. Not all buyers will qualify for Ford Credit financing. Some restrictions may apply. Take new retail delivery from authorized Ford dealer's stock by 7/6/21. See dealer for qualifications and complete details on all incentives.

SALES TEAM

 AI Morgan	 Chris Gray	 Jon Reed	 Matt Janish	 Ben Tinker	 Jerry Staples	 Terry Betz	 Chris Hunter	 Steven Stout
---------------	----------------	--------------	-----------------	----------------	-------------------	----------------	------------------	------------------

Sakelaris
Ford Lincoln Of Rolla
www.sakelarisfordrolla.com

Sales Hours:
Mon.-Fri. 8 AM-6 PM
Sat. 8 AM-4 PM

Service Hours:
Mon.-Fri. 8 AM-6 PM
Saturday 8 AM-4 PM

573-364-1211 • 800-325-1211 • 1621 Martin Springs Drive, Rolla, MO 65401

SCAG POWER EQUIPMENT

SPECIAL PRICING ON MOWERS IN STOCK!

0% For 60 Months Or Call For Best Cash Prices



SCAG TIGER CAT II

TIGER CAT II
61" 32 HP, B&S VANGUARD

\$11,902 • plus taxes and fees



LIBERTY Z

SZL48-21FR SCAG LIBERTY Z
- 21 HP KAW
LIBERTY Z

\$5,249 0% For 60 Months
• plus taxes and fees



FREEDOM Z

FREEDOM Z
48" 24 HP KOHLER KT

\$5,800 0% For 60 Months
• plus taxes and fees



PATRIOT

PATRIOT Z 52" 22 HP KAW FX

\$7,583 0% For 60 Months
• plus taxes and fees



CHEETAH

CHEETAH II 61" 37 HP,
B&S VANGAURD EFI-

\$13,750 0% For 60 Months
• plus taxes and fees



TURF TIGER II

TURF TIGER II
61" 37 HP, VANGUARD EFI

\$15,314 0% For 60 Months
• plus taxes and fees

DIAMOND EQUIPMENT

Just 4 Miles South of Westphalia
573-455-2617
www.diamondrequirement.com

ASK US ABOUT
FREE DELIVERY AND OUR
EXTENDED WARRANTY!

ANGUS BULLS FOR SALE: Red & black, 18-27 months, pasture raised, gentle, easy calving sires, vet tested & vaccinated, \$1,875. BarNone Ranch, Sullivan. (636)629-3356, (314)580-8601.

FOR SALE: 3 & 4 Year Old Pure Bred Angus Bulls. Top Notch Genetics On A Complete Health Program. Very Easy Calving Bulls. All Are AI Sired Out Of Top Genetics. Call 573-578-3086.

Now HIRING!



Would you like to make \$16.90 an hour with full benefits?



Do you want a career instead of a job?

Part-Time Positions Available
Three Shifts Offered

**Walmart DC in St. James, MO
Is Now Hiring**

Apply at www.careers.walmart.com
or text DC to 240240.
Join a winning team!
573-265-4800

FARM RAISED Border Col-lie Puppies: \$200. 573-680-7794.

YOUNG BLACK BULL: Ideal for heifers. \$1200. (573)437-3590.

FOR SALE: Rough sawn oak lumber, 85 per. board foot, actual dimension calculated. No job too large or small. Also buying timber oak or cedar. (417)520-7500.

JOHN DEERE 4240 TRACTOR: CAH, one owner, 8000 hrs., recent overhaul, power shift with Farm Hand QT loader, \$29,500. Call (573)881-3557.

WEATHERBY ORION-1: Over/under double barrel 12 ga., 28 in., New Won on raffle. \$775. (573)680-2524.

LOOKING FOR FALL DEER SEASON HUNTING LEASE: Up to 200 Acres. (314)713-8519.

63 Motors

31100 Hwy. 63 N. • Vienna, MO
Chris Feeler
573-422-6344 • Cell 573-690-0890

Spring HOME CARE

ABOVE & BEYOND ROOFING
SERVING LAKE OF THE OZARKS

Have you scheduled your spring roof inspection yet?
We offer **FREE**, no-obligation, roof inspections!
Give us a call to get on our schedule!

ABOVE & BEYOND ROOFING
SERVING LAKE OF THE OZARKS

1212 Spring Valley Rd
Osage Beach, MO 65065
573-302-0354
lakeozarkroofing.com

1986 ALLEGRO MOTORHOME: 27' bring gas, battery and drive home. \$1800 firm. (573)247-2825.

FOR SALE: 1997 Single wheel turn Chevy, 454, 4x4, rebuilt transmission, \$3000. (417)270-6598.

Equipment, Utility & Dump Trailers Ready for Your Spring Clean Up Jobs!

Ironbull, PJ, Elite, Stag & Wesco In Stock Now!

IRONBULL
A NEW BREED OF TRAILERS

PJ TRAILERS

WESTGATE TRAILER & EQUIP.

www.westgatetrailer.net

Serving Your Trailer and Truck Bed Needs in Two Locations

8920 West Bus.60, Mtn. Grove, Mo
M-F 8-5 • Sat. 8-12
417-926-7733

7136 West Farm Road 140, Springfield, Mo.
M-F 8:30-5 • Sat. 9-12
417-351-6974

FULL SERVICE SHOP

BRAUNVIEH BULL: Easy Calving, Gentle, Daughters Are Wonderful Cows. 573-291-4732.

TINY TINY TINY: Homes homes homes, Call Marla (573) 657-7040. chateauhomes.net

PAUL'S FURNITURE OUTLET

- 0\$ Down
- 12 Months
Same As Cash!
- Up To 36 Months To Pay!

www.paulsfurniturerollamo.com

1355 S. Bishop Ave. • Rolla, MO 65401
573-364-7285

Ashley - Frigidaire
Maytag - Flexsteel
-La-Z-Boy

Like us on Facebook

WEHMEIER ANGUS: Yearling Angus bulls. Call (573)578-7434.

JOHN DEERE 21 HOLE GRAIN DRILL: \$1800. (573)764-3078.

Auctioneer's Directory

GRATZ REAL ESTATE & AUCTIONEERING
Auctioneers: Bill Gratz, Craig Gratz & Logan Gratz • Jefferson City, MO
573-635-4168 Or 573-690-0477
www.callgratz.com

WHEELER AUCTIONS & REAL ESTATE
23101 Hwy. 24, Paris, MO
660-327-5890
www.wheelerauctions.com

KNIGHT AUCTION
130 W. Fremont Rd, Lebanon, MO
417-533-7741
www.knightauctionservice.com

BERTI AUCTION SERVICE, LLC
7786 Seminary Rd, Sullivan, MO 63080
573-468-5511
www.bertiauction.com

WOODS

Financing Available - Prices Subject To Change Without Notice

RD72 FINISH MOWER \$3,200
20-35 Hp, 35 Hp Gearbox, 3 Cast Iron Housing, Grease able Ball Bearings, 8 Gauge Deck, 3 Yr Gearbox Warranty, 1 Mower Warranty, Pneumatic Caster Wheels

BW-12-WOODS \$11,950
12 Ft Batwing Cutter, 35 Hp, Minimum, Cuts 1.5 Inch Brush, 7 Gauge Steel Deck, 6 Year Gearbox Warranty, 160 Hp, Gearbox, white, new, laminated tires
As Low As \$141 Per Month

PSS-72-WOODS \$7,900
60" Working Width, 2 Speed Box Ratio, 5 Bushel Box Capacity, 18" Disc Blade, 7" Spacing Seed Cup

TS650-WOODS \$5,400
2 left at this price
Stump Grinder, 16 Inch Below Grade Cutting Depth, 20 Inch Cutting Wheels, Tip Speed Is 5428 RPM Tractor

RC-C-WOODS
RC4C - \$1,350
RC5C - \$1,850
RC6C - \$2,050
5-6 Ft, 18 Hp, 2-9" Cutting, 1" Gear Box, 50 Gear Box Hp, 13,620 fpm, 7" Deck Side Width, 494 Lbs, Oval Stump Jumper, 1 Year Cutter Warranty, 3 Year Gear Box Warranty

BIG5 Backhoe-WOODS \$5,500
1 left
7 1/2 Ft Maximum Digging Depth, 3 Pt. Mount

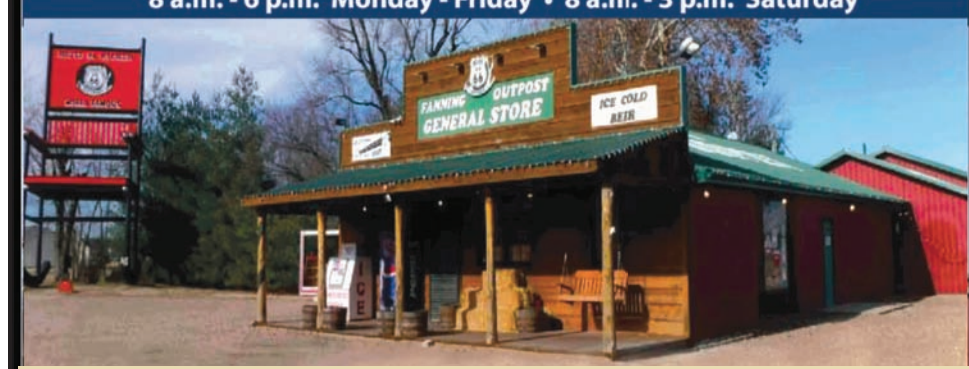
BW 15.50 No 0% Financing Available On This One
540 PTO, 2 1/2 Cut Capacity, 15', 210 HP Gearbox, Quick Change Blades
4 Laminated Tires - \$15,500

DIAMOND R EQUIPMENT

4 Miles South Of Westphalia On Highway 63 (573) 455-2617
On I-70 Next To Klienschmidt's, Higginsville Exit (660) 584-8757
www.diamondequipment.com

FANNING FEED

5957 Hwy. ZZ, Cuba, MO 65453 • 573-885-0787
8 a.m. - 6 p.m. Monday - Friday • 8 a.m. - 3 p.m. Saturday



<p>50 lb Bag Stocker Grower Medicated</p> <p>No VFD Required \$8.49 \$339.60 Per Ton</p> <p>PURINA</p>	<p>50 lb Bag Ranch Hand</p> <p>20% Cube \$8.99 \$339.60 Per Ton</p> <p>PURINA</p>	<p>50 lb Bag High Magnesium</p> <p>\$20.00 Bag \$740.00 Per Ton</p> <p>PURINA</p>
<p>50 lb Bag All Season Wind & Rain</p> <p>\$23.00 Bag \$820.00 Per Ton</p> <p>PURINA</p>	<p>Rangeland 30-13 Protein Tub 225 lb Tub</p> <p>\$89.50</p> <p>PURINA</p>	<p>VitaFerm Concept-Aid</p> <p>\$32.49 Per Bag</p> <p>Pallet Of 50/50 lb Bags \$1,549.95</p>

PURINA EXCLUSIVE RED SPORTMAX Bluebonnet Feeds Taste of the Wild YETI Diamond injinia VitaFerm Concept-Aid

JOHN DEERE 4240 TRACTOR: 1969, 3600 hrs. showing, power shift, dual hydr., Dif lock, new rubber, original. \$17,500. Call (573)881-3557.

FOR SALE: Gotway MSuper X Electric Unicycle, 84 volts, 1600 watts, speed 35 m.p.g., 50 mile range on one charge, max weight 260 lbs. \$1000. Call (573)502-3566.

MAKE THE MOST OUT OF YOUR ADVERTISING WITH PRINT COPIES!

ADVERTISE!

Ad Tracker
Place Ads By Phone (573)736-2226
Email - adtrackerdisplay@yahoo.com Or Fax (573)736-5691

MAIL IN THIS COUPON

Mail To: **Ad Tracker**
P.O. Box 37
Crocker, Mo. 65452

Name _____
Address _____
City _____
State _____ Zip _____

Classified Line Ads Are - 50c Per Word
Picture Classified Black & White - \$35
Picture Classified With Color - \$38

Office
573-736-2226
Fax Line (Only) - 573-736-5691
www.adtrackermo.com
Classified Ads Must Be Paid Before Printing.

Each Phone Number Counts 1 Word - City 1 Word
For Sale 2 Words - And Any Other Number Or Word
Regardless Of Size, Counts As 1 Word.

Please Print. Use Additional Paper If Needed

No. of words _____ Telephone No. _____

Be Sure Your Check, Cash, Money Order Or Credit Card # Is Enclosed.

Check # _____ Cash _____ Money Order _____

VISA Money Card # _____ Exp. Date ____/____/____
AMERICAN EXPRESS DISCOVER NETWORK
Three Digit CVC On Back Of Credit Card # _____

Ad Tracker
PO Box 37 Crocker Mo 65452
Office Hours: 8 a.m. - 5 p.m. Monday-Friday

CLASSIFIED DEADLINE: 3 P.M. Tuesday afternoon. Your ad will be in the following issue if it is received after 3 P.M. Tuesday.

Classified Ads Must Be Paid Before Printing.

DISPLAY DEADLINE: Monday at 12 Noon

\$20.00 Service Charge For All Returned Checks
\$2.00 Min. Charge For Billing. Postage & Handling

Contents of this issue do not constitute an endorsement by the Ad Tracker or Ad Tracker employees. Department of Army or Fort Leonard Wood. All products, ads or services are open to the general public without regard to race, religion, sex or nationality.

Hilkemeyers Honda, Inc

573-744-5245 • Hwy. 63 South, Freeburg, MO

2021 Honda CBR 650 RX



- * Seat At 31.9"
- * 6 Speed Transmission
- * Liquid Cooled 4 Cylinder

2021 Honda Monkey 125*



- * 4 Speed
- * Seat At 30.6"
- * Fuel Injection

2017 Honda Rebel 500*



- * 24" Seat Height
- * 6 Speed Transmission
- * Liquid Cooled Twin Cylinder

2020 Honda VT 1300C Fury



- * Seat At 26.9"
- * 5 Speed Shaft Drive
- * Liquid Cooled V-Twin

2021 Honda CRF50F



- * 3 Speed Automatic
- * 21.6 Seat Height
- * 111 Lbs

2021 Honda CRF125F



- * Electric Start
- * 4-Speed
- * 34.9" Seat Height

Big Wheel

For Optimum Safety And Performance Read The Owner Manual.



HONDA Outboard

2019 Honda BF 60/40 Jet a/Control Box & Cables

\$7,999

Offer Ends May 31, 2021

2016 - BF 25 Tiller	\$4,250
2021 BF75.....	\$9,995
2021 BF 15- Electric Start.....	\$3,350
2021 BF 2.3.....	\$1,199
2021 BF 5.....	\$1,899
2021 Honda BF 150/105.....	\$15,995

* With Control Box & Cables

HONDA TRX



Offer Ends May 31, 2021



2020 HONDA TRX680 RINGON

3-Speed Automatic,
Independent Suspension,
1 Only

2021 HONDA TRX90K

4-Speed Automatic,
Electric Start,
26" Seat Height

WE ALSO STOCK AND SELL!



- Hunting And Fishing Supplies
- Cast Iron Cookware

We Are A Full Sales & Service Store

FREEBURG HARDWOOD PRODUCTS, CO.

Metal Fabrication Shop

- Storage Sheds • Chicken Houses • Feed Bunks
- Well House • Mineral Feeders • Deer Hunting Stands

573-744-5236 Or 573-690-6808

Hwy. 63 South • Freeburg, MO www.freeburghardwoodproducts.com



Can Be Custom Built To Fit Your Needs