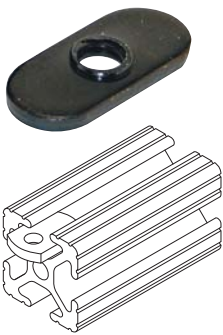
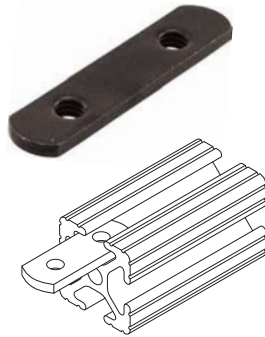




Economy Slide-in T-Nuts



A - Slide-In Economy T-Nuts



B - Slide-In Double Economy T-Nuts



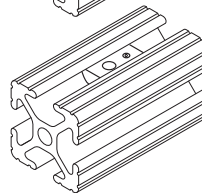
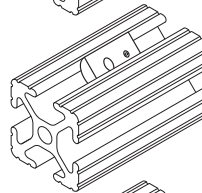
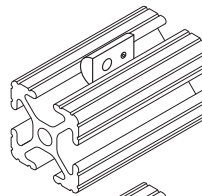
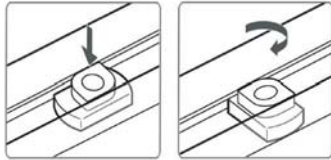
C - Roll-In T-Nuts with Set Screw



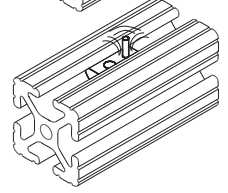
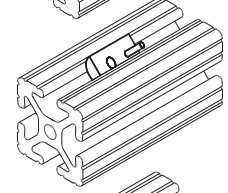
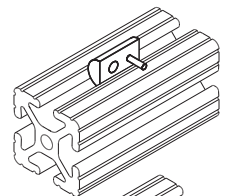
D - Roll-In T-Nuts with Flexible Handle



E - Drop-In T-Nuts



G - Roll-In T-Nuts with Ball Spring



F - Roll-In T-Nuts

Item No.	Series	Compatibility Code	Style	Description	Material	Thread	Pack Qty.
AES-3280	10	6-10	B	Slide-in Double Economy T-Nut	Zinc-Plated Carbon Steel	1/4-20	1
AES-3313	10	6-10	C	Roll-in T-Nut with Set Screw	Zinc-Plated Carbon Steel	1/4-20	1
AES-3376	10	6-10	D	Roll-in T-Nut with Flexible Handle	Zinc-Plated Carbon Steel	1/4-20	1
AES-3785	10	6-10	A	Slide-in Economy T-Nut	Plated Carbon Steel	1/4-20	1
AES-3278	15	8-15	A	Slide-in Economy T-Nut	Plated Carbon Steel	5/16-18	1
AES-3279	15	8-15	B	Slide-in Double Economy T-Nut	Zinc-Plated Carbon Steel	5/16-18	1
AES-3282	15	8-15	D	Roll-in T-Nut with Flexible Handle	Zinc-Plated Carbon Steel	5/16-18	1
AES-3283	15	8-15	D	Roll-in T-Nut with Flexible Handle	Zinc-Plated Carbon Steel	1/4-20	1
AES-3286	15	8-15	A	Slide-in Economy T-Nut	Plated Carbon Steel	1/4-20	1
AES-3311	15	8-15	C	Roll-in T-Nut with Set Screw	Zinc-Plated Carbon Steel	5/16-18	1
AES-25-1961	25	6-25	A	Slide-in Economy T-Nut	Plated Carbon Steel	M6 x 1.00	1
AES-25-1962	25	6-25	B	Slide-in Double Economy T-Nut	Zinc-Plated Carbon Steel	M6 x 1.00	1
AES-25-1966	25	6-25	D	Roll-in T-Nut with Flexible Handle	Zinc-Plated Carbon Steel	M6 x 1.00	1
AES-25-3313	25	6-25	C	Roll-in T-Nut with Set Screw	Zinc-Plated Carbon Steel	M6 x 1.00	1
AES-40-1961	40	8-40	A	Slide-in Economy T-Nut	Plated Carbon Steel	M6 x 1.00	1
AES-40-1966	40	8-40	D	Roll-in T-Nut with Flexible Handle	Zinc-Plated Carbon Steel	M6 x 1.00	1
AES-40-1968	40	8-40	C	Roll-in T-Nut with Set Screw	Zinc-Plated Carbon Steel	M6 x 1.00	1
AES-40-1981	40	8-40	A	Slide-in Economy T-Nut	Plated Carbon Steel	M8 x 1.25	1
AES-40-1982	40	8-40	B	Slide-in Double Economy T-Nut	Zinc-Plated Carbon Steel	M8 x 1.25	1
AES-40-1986	40	8-40	D	Roll-in T-Nut with Flexible Handle	Zinc-Plated Carbon Steel	M8 x 1.25	1
AES-40-1988	40	8-40	C	Roll-in T-Nut with Set Screw	Zinc-Plated Carbon Steel	M8 x 1.25	1
AES-13060	45	10-45	F	Roll-in T-Nut	Zinc-Plated Steel	M6	1
AES-13062	45	10-45	F	Roll-in T-Nut	Zinc-Plated Steel	M8	1
AES-13083	20	5-20	G	Roll-in T-Nut with Ball Spring	Zinc-Plated Steel/Stainless Steel	M4	1
AES-13084	20	5-20	G	Roll-in T-Nut with Ball Spring	Zinc-Plated Steel/Stainless Steel	M5	1
AES-13092	30	8-30	F	Roll-in T-Nut	Zinc-Plated Steel	M6	1
AES-13094	30	8-30	F	Roll-in T-Nut	Zinc-Plated Steel	M8	1
AES-13110	30	8-30	E	Drop-in T-Nut, Blue	Blue Plated Steel	1/4-20	1
AES-13115	30	8-30	E	Drop-in T-Nut, Black	Black Plated Steel	M5	1
AES-13117	30	8-30	E	Drop-in T-Nut, Yellow	Yellow Plated Steel	M6	1
AES-13120	45	10-45	E	Drop-in T-Nut, Blue	Blue Plated Steel	1/4-20	1
AES-13124	45	10-45	E	Drop-in T-Nut, Blue	Blue Plated Steel	5/16-18	1
AES-13132	45	10-45	E	Drop-in T-Nut, Blue	Blue Plated Steel	M6	1



Bolt Assemblies



Economy T-Nut



**Button Head
 Socket Cap Screw**



**Flanged Button Head
 Socket Cap Screw**



Socket Head Cap Screw

Fractional is steel with black zinc. Metric has a blue coating.

Item No.	Series	Compatibility Code	Tool Size Reference	Description	Pack Qty.
Inch					
AES-3017	10	6-10	—	1/4-20 x 1 Low Head Socket Cap Screw	1
AES-3064	10	6-10	3/16	1/4-20 x 3/4 Socket Head Cap Screw	1
AES-3321	10	6-10	5/32	1/4-20 x 1/2 Flanged Button Head Socket Cap Screw and 5/16 T-Nut	1
AES-3386	10	6-10	5/32	1/4-20 x 3/8 Flanged Button Head Socket Cap Screw and Econ T-Nut	1
AES-3393	10	6-10	5/32	1/4-20 x 1/2 Button Head Socket Cap Screw and Econ T-Nut	1
AES-3457	10	6-10	5/32	10-32 x 3/8 Socket Head Cap Screw and Econ Slide-In T-Nut	1
AES-3471	10	6-10	3/16	1/4-20 x 7/8 Socket Head Cap Screw, Econ T-Nut and Washer	1
AES-3491	10	6-10	3/16	1/4-20 x 1/2 Socket Head Cap Screw and Econ Slide-In T-Nut	1
AES-3018	15	8-15	—	5/16-18 x 1 1/4 Low Head Socket Cap Screw	1
AES-3122	15	8-15	1/4	5/16-18 x 1 Socket Head Cap Screw	1
AES-3320	15	8-15	1/4	5/16-18 x 1 1/16 Socket Head Cap Screw and 3/16 T-Nut	1
AES-3421	15	8-15	1/4	5/16-18 x 1 1/4 Socket Head Cap Screw, Econ T-Nut and Washer	1
AES-3456	15	8-15	1/4	5/16-18 x 3/8 Socket Head Cap Screw and Slide-In T-Nut	1
AES-3470	15	8-15	1/4	5/16-18 x 1 Socket Head Cap Screw, Econ T-Nut and Washer	1
Metric					
AES-75-3572	20	5-20	3mm	M5 x 10mm Flanged Head Socket Cap Screw	1
AES-75-3581	20	5-20	3mm	M5 x 8mm Button Head Socket Cap Screw and Econ Slide-In T-Nut	1
AES-11-6518	25	6-25	5mm	M6 x 18mm Socket Head Cap Screw	1
AES-75-3401	25	6-25	4mm	M5 x 10mm Socket Head Cap Screw and Econ Slide-In T-Nut	1
AES-75-3404	25	6-25	4mm	M6 x 1.00 Button Head Socket Cap Screw and 5/16 T-Nut	1
AES-75-3592	25	6-25	5mm	M6 x 14mm Flanged Head Socket Cap Screw	1
AES-11-8320	30	8-30	5mm	M8 x 20mm Button Head Socket Cap Screw	1
AES-11-8525	30, 40, 45	8-30, 8-40, 10-45	6mm	M8 x 25mm Socket Head Cap Screw	1
AES-75-3585	30	8-30	4mm	M6 x 14mm Flanged Head Socket Cap Screw	1
AES-75-3590	30	8-30	5mm	M6 x 10mm Socket Head Cap Screw	1
AES-75-3593	30	8-30	5mm	M6 x 14mm Socket Head Cap Screw and Drop-In T-Nut	1
AES-75-3595	30	8-30	5mm	M6 x 16mm Socket Head Cap Screw and Drop-In T-Nut	1
AES-75-3600	30	8-30	4mm	M6 x 12mm Button Head Socket Cap Screw and Drop-In T-Nut	1
AES-11-8325	40	8-40	5mm	M8 x 25mm Button Head Socket Cap Screw	1
AES-13-8525	40	8-40	6mm	M8 x 25mm Socket Head Cap Screw	1
AES-75-3422	40	8-40	5mm	M8 x 1.25 x 16mm Button Head Socket Cap Screw and 5/16 T-Nut	1
AES-75-3625	40	8-40	6mm	M8 x 16mm Socket Head Cap Screw and Slide-In T-Nut	1
AES-75-3627	40	8-40	6mm	M8 x 18mm Socket Head Cap Screw and Slide-In T-Nut	1
AES-13003	45	10-45	—	M12 x 30mm Button Head Socket Cap Screw	1
AES-14196	45	10-45	—	Threaded Insert	1
AES-75-3619	45	10-45	5mm	M8 x 18mm Button Head Socket Cap Screw and Drop-In T-Nut	1
AES-75-3623	45	10-45	—	M12 x 30mm Button Head Socket Cap Screw	1
AES-75-3630	45	10-45	6mm	M8 x 20mm Socket Head Cap Screw and Drop-In T-Nut	1

REGIONAL STOCK!

ESSENTRA gives you the convenience of regional stock for fast delivery and freight savings!



SAME-DAY SHIPPING



Anchor Fasteners



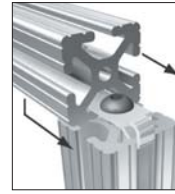
A flush, vibration proof fastening option allowing infinite positioning along the T-slotted profile. Counterbore machining required. **Use with 10, 15, 20, 25, 30 and 40 Series profiles.**

Item No.	Series	Compatibility Code	Thread Size	Pack Qty.
Inch				
AES-3395	10	6-10	10-32	1
AES-3360	15	8-15	5/16-18	1
Metric				
AES-13184	20	5-20	M5	1
AES-25-3896	25	6-25	M5	1
AES-13186	30	8-30	M6	1
AES-40-3897	40	8-40	M8	1

80/20® Inc.

The Industrial Erector Set®

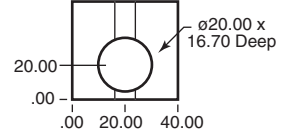
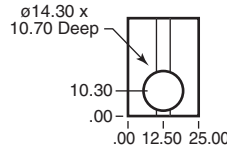
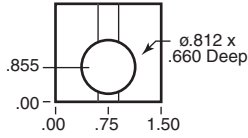
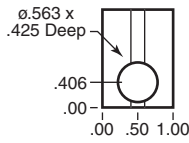
End Fasteners



Provides a clean, hidden method of connecting profiles at 90 degrees. Mounting profile requires end tap machining; mating profile requires access hole. **Use with 10, 15, 20, 25 and 40 Series profiles.**

Item No.	Series	Compatibility Code	Thread Size	Pack Qty.
Inch				
AES-3381	10	6-10	1/4-20	1
AES-3380	15	8-15	5/16-18	1
Metric				
AES-20-3895	20	5-20	M5 x 12	1
AES-25-3895	25	6-25	M6 x 1.00	1
AES-40-3891	40	8-40	M8 x 1.25	1

Double Anchor Fasteners



A flush, vibration proof fastening option allowing infinite positioning along the T-slotted profile. Counterbore machining required. Anchor counterbore details provided in the line drawings. **Use with 10, 15, 25 and 40 Series profiles.**

Short Item No.	Long Item No.	Series	Compatibility Code	Thread Size	Pack Qty.
Inch					
AES-3090	AES-3092	10	6-10	10-32	1
AES-3098	AES-3099	15	8-15	5/16-18	1
Metric					
AES-25-3094	AES-25-3096	25	6-25	M5	1
AES-40-3100	AES-40-3102	40	8-40	M8	1

80/20® Inc.

The Industrial Erector Set®

2-Hole Inside Corner Brackets

Two Hole Inside Corner (Inch)



Two Hole Gusset Inside Corner (Inch)



Two Hole Inside Corner (Inch)



Two Hole Inside Corner (Metric)



80/20® Inc.

The Industrial Erector Set®

Item No.	Series	Compatibility Code	Description	Mounting Hardware	Pack Qty.
Inch					
AES-4108	10	6-10	Two hole inside corner bracket 1 x 1	(2) AES-3386	1
AES-4132	10	6-10	Two hole gusset inside corner bracket 1 x 1	(2) AES-3393	1
AES-4302	15	8-15	Two hole inside corner bracket 1 1/2 x 1 1/2	(2) AES-3320	1
AES-4332	15	8-15	Two hole gusset inside corner bracket 1 1/2 x 1 1/2	(2) AES-3320	1
Metric					
AES-25-4108	25	6-25	Two hole inside corner bracket 25 x 25mm	(2) AES-75-3404	1
AES-25-4132	25	6-25	Two hole gusset inside corner bracket 25 x 25mm	(2) AES-75-3404	1
AES-14073	30	8-30	Two hole inside corner	(2) AES-75-3593	1
AES-40-4302	40	8-40	Two hole inside corner bracket 40 x 40mm	(2) AES-75-3422	1
AES-40-4332	40	8-40	Two hole gusset inside corner bracket 40 x 40mm	(2) AES-75-3422	1
AES-14076	40	8-40	Two hole inside corner	(2) AES-75-3627	1
AES-14085	45	10-45	Two hole inside corner	(2) AES-75-3630	1
Inch					
AES-14061	10	6-10	Two hole inside corner	(2) AES-3457	1
	20	5-20			
	25	6-25			





4- and 8-Hole Inside Corner Brackets

80/20® Inc.
 The Industrial Erector Set®



90-Degree Inside Corner (Inch)



Four Hole Inside Corner (Inch or Metric)



Four Hole Gusset Inside Corner (Inch or Metric)



Four Hole Inside Corner* (Metric)



Eight Hole Gusset Inside Corner (Inch)



Eight Hole Inside Corner Bracket (Metric)

Item No.	Series	Compatibility Code	Description	Pack Qty.
Inch				
AES-4115	10	6-10	Four hole inside corner bracket 1 x 2	1
AES-4136	10	6-10	Four hole gusset inside corner bracket 1 x 2	1
AES-4138	10	6-10	Eight hole gusset inside corner bracket 2 x 2	1
AES-3368	15	8-15	90 degree inside corner	1
AES-4301	15	8-15	Four hole inside corner bracket 1½ x 3	1
AES-4336	15	8-15	Four hole gusset inside corner bracket 1½ x 3	1
AES-4338	15	8-15	Eight hole gusset inside corner bracket 3 x 3	1
Metric				
AES-14057*	20	5-20	Four hole inside corner bracket 20 x 40mm	1
AES-25-4115	25	6-25	Four hole inside corner bracket 25 x 50mm	1
AES-25-4136	25	6-25	Four hole gusset inside corner bracket 25 x 50mm	1
AES-25-4138	25	6-25	Eight hole gusset inside corner bracket 50 x 50mm	1
AES-14070*	30	8-30	Four hole inside corner bracket 30 x 60mm	1
AES-40-4301	40	8-40	Four hole inside corner bracket 40 x 80mm	1
AES-40-4336	40	8-40	Four hole gusset inside corner bracket 40 x 80mm	1
AES-40-4338	40	8-40	Eight hole gusset inside corner bracket 80 x 80mm	1
AES-14088*	45	10-45	Four hole inside corner bracket 45 x 90mm	1
AES-14111	45	10-45	Eight hole inside corner bracket 90 x 90mm	1

Joining Strips and Plates

80/20® Inc.
 The Industrial Erector Set®



Two Hole Joining Strip (Inch or Metric)



Three Hole Joining Strip (Metric)



Four Hole Joining Strip (Inch or Metric)



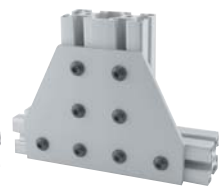
Seven Hole Cross Joining Plate (Metric)



Five Hole Joining Plate (Inch and Metric)



Five Hole Tee Joining Plate (Inch or Metric)

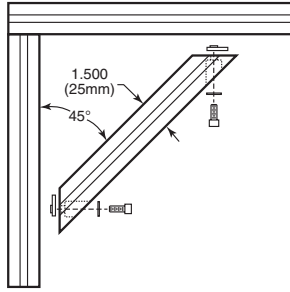


Eight Hole Tee Joining Plate (Metric)

Item No.	Series	Compatibility Code	Description	Pack Qty.
Inch				
AES-4107	10	6-10	Two hole joining strip .875 x 2	1
AES-4117	10	6-10	Four hole joining strip .875 x 4	1
AES-4140	10	6-10	Five hole tee joining plate 1 x 3	1
AES-4151	10	6-10	Five hole 90 degree joining plate 1 x 3	1
AES-4307	15	8-15	Two hole joining strip 1.490 x 3	1
AES-4305	15	8-15	Four hole joining strip 1.490 x 6	1
AES-4340	15	8-15	Five hole tee joining plate 1.5 x 4.5	1
AES-4351	15	8-15	Five hole 90 degree joining plate 1.5 x 4.5	1
Metric				
AES-25-4107	25	6-25	Two hole joining strip 22mm x 50mm	1
AES-25-4117	25	6-25	Four hole joining strip 22mm x 100mm	1
AES-25-4140	25	6-25	Five hole tee joining plate 25mm x 75mm	1
AES-25-4151	25	6-25	Five hole 90 degree joining plate 25mm x 75mm	1
AES-30-4307	30	8-30	Two hole joining strip 27mm x 60mm	1
AES-30-4306	30	8-30	Three hole joining strip 27mm x 90mm	1
AES-30-4335	30	8-30	Seven hole cross joining plate 90mm x 150mm	1
AES-30-4340	30	8-30	Five hole tee joining plate 30mm x 90mm	1
AES-30-4351	30	8-30	Five hole 90 degree joining plate 30mm x 90mm	1
AES-40-4307	40	8-40	Two hole joining strip 39.8mm x 80mm	1
AES-40-4305	40	8-40	Two hole joining strip 39.8mm x 160mm	1
AES-40-4340	40	8-40	Five hole tee joining plate 40mm x 120mm	1
AES-40-4351	40	8-40	Five hole 90 degree joining plate 40mm x 120mm	1
AES-45-4307	45	10-45	Two hole joining strip 42mm x 90mm	1
AES-45-4306	45	10-45	Three hole joining strip 42mm x 135mm	1
AES-45-4335	45	10-45	Seven hole cross joining plate 135mm x 225mm	1
AES-45-4351	45	10-45	Five hole 90 degree joining plate 45mm x 135mm	1
AES-45-4355	45	10-45	Eight hole tee joining plate 135mm x 180mm	1



45 Degree Supports



80/20® Inc.
The Industrial Erector Set®



45 degree support maintains a clean, flush connection. Mounting hardware included.

6 inches		12 inches		Compatibility Code	Profile	Description	Pack Qty.
Item No.	Item No.						
AES-2565	AES-2570	6-10	AES-1010	(2) 1/4-20 x 3/8 Washers and Economy T-Nuts		1	
AES-2566	AES-2567	6-10	AES-1020	(4) 1/4-20 x 3/8 Washer and Economy T-Nuts		1	
AES-2525	AES-2535	8-15	AES-1515	(2) 5/16-18 x 3/4 Washer and Economy T-Nuts		1	
AES-2530	AES-2540	8-15	AES-1530	(4) 5/16-18 x 3/4 Washer and Economy T-Nuts		1	

160mm		320mm		Compatibility Code	Profile	Description	Pack Qty.
Item No.	Item No.						
AES-20-2565	AES-20-2570	5-20	AES-20-2020	(2) M5 x 12 Washer and Economy		1	
AES-25-2565	AES-25-2570	6-25	AES-25-2525	(2) M6 x 16 Washers and Economy		1	
AES-25-2566	AES-25-2567	6-25	AES-25-2550	(4) M6 x 16 Washer and Economy		1	
AES-30-2565	AES-30-2570	8-30	AES-30-3030	(2) M8 x 16 Washer and Self-Aligning		1	
AES-40-2525	AES-40-2535	8-40	AES-40-4040	(2) M8 x 18 Washer and Economy		1	
AES-40-2530	AES-40-2540	8-40	AES-40-4080	(4) M8 x 18 Washer and Economy		1	
AES-45-2525	AES-45-2535	10-45	AES-45-4545	(2) M8 x 20 Washer and Self-Aligning		1	

Note: Fastener should be a socket head cap screw.

Aluminum Hinges

80/20® Inc.
The Industrial Erector Set®



Use to mount heavier doors or hinge two profiles side by side. Clear anodized finish.

Item No.	Series	Compatibility Code	Size x	Pack Qty.
Inch				
AES-2086	10	6-10	2 x 2	1
AES-2085	15	8-15	3 x 3	1
Metric				
AES-25-2086	25	6-25	50.8 x 50.8 mm	1
AES-40-2085	40	8-40	76.2 x 76.2 mm	1

Die Cast Zinc Hinges

80/20® Inc.
The Industrial Erector Set®



Use to mount heavier doors or hinge two profiles side by side. Black powder coat finish.

Item No.	Series	Compatibility Code	Size	Pack Qty.
Metric				
AES-12255	20	5-20	40 x 40 mm	1
AES-12062	30	8-30	60 x 60 mm	1

Standard Plastic Hinges

80/20® Inc.
The Industrial Erector Set®



Fiberglass-reinforced black nylon with stainless steel pin.

Item No.	Series	Compatibility Code	Size	Pack Qty.
Metric				
AES-12067	20	5-20	30 x 39 mm	1
AES-12107	30	8-30	48 x 59 mm	1
AES-12134	45	10-45	48 x 87 mm	1

Heavy Duty Hinge Assemblies

80/20® Inc.
The Industrial Erector Set®



Heavy duty hinge captivates door. Mounting hardware included.

Item No.	Series	Compatibility Code	Pack Qty.
Inch			
AES-2066	10	6-10	1
AES-2106	15	8-15	1
Metric			
AES-25-2066	25	6-25	1
AES-40-2106	40	8-40	1

Black Plastic Door Handles

80/20® Inc.
The Industrial Erector Set®



Bolts directly to doors and panels. Made of corrosion resistant, high-strength polycarbonate.

Item No.	Series	Compatibility Code	Size	Thread	Pack Qty.
Inch					
AES-2062	10	6-10	4.41	1/4	1
AES-2061	15	8-15	5.47	5/16	1
AES-2060	15	8-15	7.75	5/16	1
Metric					
AES-25-2062	25	6-15	112.01	M6 x 1.0	1
AES-40-2061	40	8-40	138.94	M8 x 1.25	1
AES-40-2060	40	8-40	196.85	M8 x 1.25	1



Roller Wheel Bracket Assemblies

80/20® Inc.

The Industrial Erector Set®



Ideal for framed door. Assembly includes roller wheel bracket and mounting hardware.

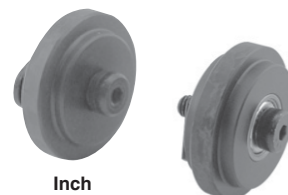
Item No.	Series	Compatibility Code	Pack Qty.
Inch			
AES-2751	10	6-10	1
AES-2755	15	8-15	1
Metric			
AES-25-2751	25	6-25	1
AES-40-2755	40	8-40	1

Roller Wheels

80/20® Inc.

The Industrial Erector Set®

Mounts to profile end or T-slot - ideal for guided linear motion. Made of self-lubricating black nylon. All mounting hardware included.



Item No.	Series	Compatibility Code	Pack Qty.
Inch			
AES-2281	10	6-10	1
AES-2280	15	8-15	1
Metric			
AES-25-2281	25	6-25	1
AES-40-2280	40	8-40	1

Deadbolt Latches

80/20® Inc.

The Industrial Erector Set®



Positive, spring-loaded deadbolt, ideal for door enclosures. Stainless steel bolt, spring and handle; all mounting hardware included.

Item No.	Series	Compatibility Code	Degree	Pack Qty.
Inch				
AES-2053	10, 15	6-10, 8-15	0	1
AES-2107	10, 15	6-10, 8-15	90	1
Metric				
AES-65-2053	25, 40	6-25, 8-40	0	1
AES-65-2107	25, 40	6-25, 8-40	90	1
AES-45-2053	45	10-45	0	1
AES-45-2107	45	10-45	90	1

Top Mount Bi-fold Door Hanger Assemblies

The Industrial Erector Set®



Creates sliding or bi-fold doors without the use of a bottom rail; rotates freely as door pivots. Made of UHMW polyethylene.

Item No.	Series	Compatibility Code	Thread Size	Pack Qty.
AES-2059	10	6-10	1/4-20 x .410	1
AES-2051	15	8-15	3/16-18 x .780	1

Panel Retainers

80/20® Inc.

The Industrial Erector Set®



Single



Double

Strongest way to cost-effectively retain plastic panels in a frame or separated by a profile. Requires a drill thru hole in the panel that lines up with retainer's tapped hole. Made of 6105-T5 clear anodized aluminum.

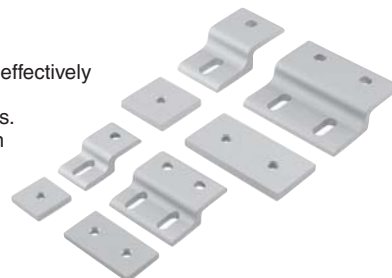
Item No.	Series	Compatibility Code	Type	Pack Qty.
Inch				
AES-2496	10	6-10	10 Single	1
AES-2512	10	6-10	10 Double	1
AES-2434	15	8-15	15 Single	1
AES-2515	15	8-15	15 Double	1
Metric				
AES-25-2496	25	6-25	25 Single	1
AES-25-2512	25	6-25	25 Double	1
AES-40-2434	40	8-40	40 Single	1
AES-40-2515	40	8-40	40 Double	1

Single Mesh Panel Retainers

80/20® Inc.

The Industrial Erector Set®

Strongest way to cost-effectively retain wire mesh or expanded metal panels. Panel is secured when tightened between a retainer and its threaded backing plate. Made of 6105-T5 clear anodized aluminum.

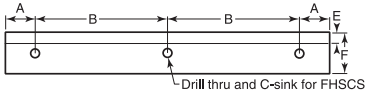


Item No.	Series	Compatibility Code	Pack Qty.
Inch			
AES-2491	10	6-10	1
AES-2494	10	6-10	1
AES-2436	15	8-15	1
AES-2435	15	8-15	1
Metric			
AES-20-2491	20	5-20	1
AES-20-2494	20	5-20	1
AES-30-2436	30	8-30	1
AES-30-2435	30	8-30	1
AES-40-2436	40	8-40	1
AES-40-2435	40	8-40	1
AES-45-2436	45	10-45	1
AES-45-2435	45	10-45	1



Akro Bin® Hangers

80/20® Inc. The Industrial Erector Set®



Develop your own customized storage system. Mounts to T-slot. Mounting hardware included.

Item No.	Series	Compatibility Code	Pack Qty.
Inch			
AES-2265	10, 15	6-10, 8-15	1
Metric			
AES-65-2264	25, 40	6-25, 8-40	1
AES-65-2265	25, 40	6-25, 8-40	1

Drop In Panel Brackets



Strong fastening brackets can be quickly and easily loaded from the face of the profile. No fastener required to mount bracket directly to profile. Made of 6105-T5 aluminum with clear anodized finish. Can be used as shelf brackets.

Item No.	Series	Compatibility Code	Pack Qty.
Inch/Metric			
AES-2489	10, 25	6-10, 6-25	1
AES-2488	15, 40	8-15, 8-40	1

Tool Hangers

80/20® Inc. The Industrial Erector Set®



Ideal for hanging air tools, cable reels, heavy door panels or transporting cables. Slides into the profile end and moves easily in the T-slot. Made of high-strength black nylon. 100 lb capacity.

Item No.	Series	Compatibility Code	Pack Qty.
Inch			
AES-2099	10	6-10	1
AES-2100	15	8-15	1
Metric			
AES-25-2099	25	6-25	1
AES-12016	30	8-30	1
AES-40-2100	40	8-40	1
AES-12015	45	10-45	1

End Caps

80/20® Inc. The Industrial Erector Set®



Gives your project the finishing touch. Made of high impact styrene. Push in fasteners included. Color black.

Item No.	Series	Description	Pack Qty.
Inch			
AES-2015	10	AES-1010 End Cap 1 x 1	1
AES-2022	10	AES-1012 Quarter Round End Cap 1 x 1	1
AES-2025	10	AES-1020 End Cap 1 x 2	1
AES-2026	10	AES-1030 End Cap 1 x 3	1
AES-2028	10	AES-2020 End Cap 2 x 2	1
AES-2030	15	AES-1515/AES-1515-LITE End Cap 1.5 x 1.5	1
AES-2035	15	AES-1517 Quarter Round End Cap 1.5 x 1.5	1
AES-2045	15	AES-1530/AES-1530-LITE End Cap 1.5 x 3	1
AES-2046	15	AES-1545 End Cap 1.5 x 4.5	1
AES-2050	15	AES-3030 End Cap 3 x 3	1
AES-2036	15	AES-1575 End Cap .75 x 1.5	1
AES-2037	15	AES-3034 End Cap .75 x 3	1

Item No.	Series	Description	Pack Qty.
Metric			
AES-12305	20	AES-20-2020 Push End Cap 20 x 20mm	1
AES-12306	20	AES-20-20 End Cap 20 x 20mm	1
AES-12307	20	AES-20-2040 End Cap 20 x 40mm	1
AES-25-2015	20	AES-25-2525 End Cap 25 x 25mm	1
AES-25-2025	25	AES-25-2550 End Cap 25 x 50mm	1
AES-25-2028	25	AES-25-5050 End Cap 50 x 50mm	1
AES-12271	30	AES-30-3030 Push-on End Cap 30 x 30mm	1
AES-12302	30	AES-30-3060 End Cap 30 x 60mm	1
AES-12303	30	AES-30-3060 End Cap 30 x 60mm	1
AES-40-2030	40	AES-40-4040/AES-40-4040-Lite End Cap 40 x 40mm	1
AES-40-2045	40	AES-40-4030-LITE End Cap 40 x 40mm	1
AES-40-2050	40	40-4045-LITE End Cap 40 x 40mm	1
AES-40-2033	40	AES-4080/AES-4080-LITE End Cap 40 x 80mm	1
AES-40-2035	40	AES-40-8080 End Cap 80 x 80mm	1
AES-12262	45	AES-45-4545 Push-on End Cap 45 x 45mm	1
AES-12259	45	AES-45-4545 End Cap 45 x 45mm	1
AES-12269	45	AES-45-4590 End Cap 45 x 90mm	1



Floor Brackets

80/20® Inc.
The Industrial Erector Set®



Allows for vertical adjustment by bolting directly to T-slot. Strong, economical method of mounting frame to floor. Die-cast zinc with black powder coat finish.

Item No.	Series	Compatibility Code	Dimensions	Pack Qty.
AES-14002	15, 30, 40	8-15, 8-30, 8-40	45 x 120 x 30 mm	1
AES-14004	45	10-45	60 x 160 x 38 mm	1

Adjustable Floor Brackets

80/20® Inc.
The Industrial Erector Set®



Height adjustable screw in front activates stop plate in the slot on the back of the bracket. Strong, economical method of mounting frame to floor. Die-cast zinc with black powder coat finish.

Item No.	Series	Compatibility Code	Dimensions	Pack Qty.
AES-14003	15, 30, 40	8-15, 8-30, 8-40	45 x 120 x 30mm	1
AES-14009	45	10-45	60 x 160 x 38mm	1

Floor Mount Plates

80/20® Inc.
The Industrial Erector Set®



Allows for vertical adjustment by bolting directly to T-slot. Strong, economical method of mounting frame to floor. Made of 6105-T5 clear anodized aluminum.

Item No.	Series	Compatibility Code	Width	Pack Qty.
Inch				
AES-2414	10	6-10	1	1
AES-2415	15	8-15	1.5	1
Metric				
AES-25-2414	25	6-25	25 mm	1
AES-40-2415	40	8-40	40 mm	1

T-Slot Covers



Threaded Stem Swivel Caster

80/20® Inc.
The Industrial Erector Set®



Mounts directly to profile ends (with end tap). Brake kit included.

Item No.	Series	Compatibility Code	Dia.	End Tap	Pack Qty.
Inch					
AES-2300	15	8-15	3	3/8-16	1
Metric					
AES-65-2300	40	8-40	75mm	M10	1

Castors with Swivel and Wheel Lock

80/20® Inc.
The Industrial Erector Set®



Mounts directly to profile ends.

Item No.	Series	Compatibility Code	Dia.	Pack Qty.
Inch				
AES-2311	10, 15	6-10, 8-15	3	1
Metric				
AES-65-2311	25, 40	6-25, 8-40	76.2 mm	1

Leveling Caster

80/20® Inc.
The Industrial Erector Set®



Move and level your frame with one component. Available in two sizes with load capacity ranging from 300-600 lbs.

Item No.	Series	Compatibility Code	Pack Qty.
Inch			
AES-2714	10, 15	6-10, 8-15	1
AES-2715	15	8-15	1
Metric			
AES-40-2715	40	8-40	1
AES-65-2714	25, 40	6-25, 8-40	1

80/20® Inc.
The Industrial Erector Set®

Covers wires and tubes in T-slot and keeps dust out. Black, 7/2".

Item No.	Series	Compatibility Code	Length	Pack Qty.
Inch				
AES-2113	10	6-10	72½"	1
AES-2110	15	8-15	72½"	1
Metric				
AES-12004	20	5-20	2m	1
AES-25-2113	25	6-25	1.8415m	1
AES-14193	30	8-30	2m	1
AES-40-2110	40	8-40	1.8415m	1
AES-12013	45	10-45	2m	1