

# Postal Bulletin

Published Since March 4, 1880

January 12, 2023

PB 22615



## USPS is Always on the Move

Delivering for America

See page 3

# Contents

## COVER STORY

USPS is Always on the Move Delivering for America . . . . . 3

## POLICIES, PROCEDURES, AND FORMS UPDATES

### Manuals

DMM Revision: Bulk Insured Claims . . . . . 5

DMM Revision: Domestic Competitive Products Pricing and Mailing Standards Changes. . . . . 6

### Publications

Publication 223 Revision: Directives and Forms Update. . . . . 13

## ORGANIZATION INFORMATION

### Domestic Mail

Labeling List Changes . . . . . 14

### Finance

2023 Social Security and Medicare Tax Withholding Rates and Limits . . . . . 37

Form W-4 Completion for Employees Claiming Exempt Status for 2023 . . . . . 38

IRS Reporting Requirements for Attorney Fees, Back Pay, or Wages. . . . . 39

Local Tax Code Information . . . . . 40

### Human Resources

Glaucoma Awareness: Lower Your Risk . . . . . 41

### Information Security

Keep Your Eyes Open for Phishing Emails . . . . . 43

### Mailing and Shipping Services

Streamlining Returns for Simplification . . . . . 43

### Stamp Services

Stamp Announcement 23-9: Women's Soccer Stamp . . . . . 44

Pictorial Postmarks Announcement . . . . . 45

How to Order the First-Day-of-Issue Digital Color or Traditional Postmarks . . . . . 46

## Supply Management

Interest Rate on Contract Claims . . . . . 51

## PULL-OUT INFORMATION

Elimination of Corporate Accounts . . . . . 17

### Fraud

Invalid USPS Corporate Account Numbers. . . . . 19

Missing, Lost, or Stolen U.S. Money Order Forms . . . . . 20

Missing, Lost, or Stolen Canadian Money Order Forms . . . . . 26

Verifying U.S. Postal Service Money Orders . . . . . 28

Counterfeit Canadian Money Order Forms . . . . . 28

Toll-Free Number Available to Verify Canadian Money Orders . . . . . 28

### Other Information

Overseas Military/Diplomatic Mail . . . . . 30

Freely Associated States Restrictions . . . . . 36

## POSTAL BULLETIN 2022 SEMI-ANNUAL INDEX

2022 Semi-Annual Index . . . . . PB 22604 (8-11-22)

Find the latest in mail and delivery information and services offered by U.S. Postal<sup>®</sup> in the *Postal Bulletin* at [about.usps.com/postal-bulletin](https://about.usps.com/postal-bulletin)

**Mail Moment<sup>®</sup>**

# Cover Story

## USPS is Always on the Move Delivering for America

The United States Postal Service® (USPS®) delivery network is the most efficient in the world. We want customers to have positive experiences with us, associate positive attributes to us, and believe that the Postal Service™ is the best, safest option for their mail delivery needs. USPS connects senders and receivers through the physical delivery of mail and packages — the heart of what we do, ultimately, is delivering. This concept is a powerful one, keeping our employees and customers safe, as we Deliver for America.

When an employee is involved in an accident, USPS bears the cost of the accident, directly and indirectly, because of its impact on the well-being of our employees and customers. Whether you manage a fleet of vehicles and drivers, oversee a mobile sales force, or drive yourself, learning more about the driver safety program can help reduce the risks associated with a Motor Vehicle Accident (MVA).

Using accident data and analysis, USPS identified the primary causes of MVAs:

- Failure to check clearance.
- Inattention or distraction.
- Haste.
- Improper backing up.
- Failure to yield right-of-way.

Additionally, the top five MVA accident path causes nationally include:

- Straight ahead.
- Vehicle backing up.
- Vehicle stopped.
- Left turn/right turn.
- Vehicle pulling to or from the curb/mailbox.

In the coming months, USPS will promote not only safe driving principles and practices for our employees, but a customer-focused messaging campaign as well. This new campaign, titled “Be Cautious and Aware,” is intended to help reduce MVAs and keep our employees and customers safe.

## Moving Forward in 2023 as Part of the Solution

The Postal Service can reduce MVAs with training and by emphasizing the importance of basic safe driving practices. By doing so, we not only reduce our accident counts, but also ensure that our employees feel prepared for their jobs. Employees are our most valuable assets. Workplace driver safety programs not only make good business sense, but also engage and empower employees.

The goal of motor vehicle safety is to keep our drivers and those with whom they share the road safe. By changing attitudes about driving behavior and improving driving skills, the Postal Service can create and sustain a safety culture where everyone understands that “Safety Depends on Me.”

For more information, see the following driver safety-related resources:

- Safety Depends on Me videos: [blue.usps.gov/corp-comm/uspstv/safety-and-health/welcome.htm](https://blue.usps.gov/corp-comm/uspstv/safety-and-health/welcome.htm).
- Handbook EL-804, *Safe Driver Program*: [blue.usps.gov/cpim/ftp/hand/el804.pdf](https://blue.usps.gov/cpim/ftp/hand/el804.pdf).
- Handbook EL-814, *Postal Employee’s Guide to Safety*: [blue.usps.gov/cpim/ftp/hand/el814.pdf](https://blue.usps.gov/cpim/ftp/hand/el814.pdf).
- Handbook EL-801, *Supervisor’s Safety*: [blue.usps.gov/cpim/ftp/hand/el801.pdf](https://blue.usps.gov/cpim/ftp/hand/el801.pdf).
- Informed Mobility Safety Observation Tool (IMSOT).
- National Highway Traffic Safety Administration: [nhtsa.gov/press-releases/early-estimate-2021-traffic-fatalities](https://nhtsa.gov/press-releases/early-estimate-2021-traffic-fatalities).
- PS Form 4584, *Observation of Driving Practices*: [blue.usps.gov/formmgmt/forms/ps4584.pdf](https://blue.usps.gov/formmgmt/forms/ps4584.pdf).
- Delivery Management System (DMS): [dms.usps.gov/page/login](https://dms.usps.gov/page/login).
- National Safety Council: [nsc.org/road](https://nsc.org/road).

— Occupational Safety and Health,  
Human Resources, 1-12-23

# Celebrate Vibrant Music and Culture with *Mariachi* Forever® Stamps



ON SALE NATIONWIDE:  
JULY 15, 2022  
Sold as a full pane.

# Policies, Procedures, and Forms Updates

## Manuals

### DMM Revision: Bulk Insured Claims

Effective April 3, 2023, the Postal Service™ will revise *Mailing Standards of the United States Postal Service, Domestic Mail Manual (DMM®)*, section 609.1.2, to reflect updates in the standards for filing bulk insured claims.

The Postal Service is revising section 609.1.2, “Bulk Insured Claims,” to provide mailers who frequently file a large number of claims the option to use the Bulk Indemnity Claims feature available on the Business Customer Gateway (BCG) portal, if approved by Headquarters Revenue and Field Accounting (RAFA). This revision will include the eligibility requirements, access request procedures, and documentation requirements.

Although the Postal Service will not publish these revisions in the DMM until April 3, 2023, the standards are effective immediately.

#### ***Mailing Standards of the United States Postal Service, Domestic Mail Manual (DMM)***

\* \* \* \* \*

#### **600 Basic Standards for All Mailing Services**

\* \* \* \* \*

#### **609 Filing Indemnity Claims for Loss or Damage**

##### **1.0 General Filing Instructions**

\* \* \* \* \*

*[Revise the text of 1.2 to read as follows:]*

### **1.2 Bulk Insured Claims**

#### **1.2.1 General**

Large-volume mailers or commercial mailers with Negotiated Service Agreements (NSAs) who file a large number of claims frequently may be allowed to use the Bulk Indemnity Claims feature available on the Business Customer Gateway (BCG) portal, if approved by Headquarters Revenue and Field Accounting (RAFA) under 1.2.3.

#### **1.2.2 Eligibility**

Eligibility for mailers to submit claims using the Bulk Indemnity Claims feature is based on the following:

- a. Revenue trends.
- b. IMpb compliance history.
- c. Prior claim history.
- d. Customer-reimbursement policy.
- e. Absence of third-party shipping insurance.
- f. If applicable, NSA agreement status.
- g. Any other criteria the Postal Service determines for eligibility to use the Bulk Indemnity Claims feature.

#### **1.2.3 Requesting Bulk Indemnity Claims Access**

To request access to the Bulk Indemnity Claims feature in BCG, mailers must contact their Business Service Network or sales account representative. The request will be reviewed by RAFA for eligibility and, if the mailer is eligible for access, approved in writing. Upon approval, the mailer will be required to attend an onboarding meeting and will be provided the following:

- a. Information regarding access to the Bulk Indemnity Claims feature in BCG.
- b. Bulk claim-submission requirements.
- c. Upload process and instructions to comply with USPS review of supporting documentation to substantiate claims.

#### **1.2.4 Documentation**

The mailer must retain all supporting documentation related to claims (which, unless otherwise specified, includes all documentation otherwise required for a claim under 609, including proof of filing by the underlying customer) for one year from the submission date and must provide it to USPS upon request.

\* \* \* \* \*

The Postal Service will incorporate these revisions into the April 3, 2023, edition of the online DMM, which is available via Postal Explorer® at [pe.usps.com](https://pe.usps.com).

## DMM Revision: Domestic Competitive Products Pricing and Mailing Standards Changes

Effective January 22, 2023, the Postal Service™ will revise *Mailing Standards of the United States Postal Service*, Domestic Mail Manual (DMM®), to reflect changes to prices and certain mailing standards for the following competitive products:

- Priority Mail Express®.
- Priority Mail®.
- Return Services.
- Mailer Services.
- Other.

This article describes new prices and product features for competitive products established by the Governors of the United States Postal Service®. Information on new prices is available on the Postal Explorer® website at [pe.usps.com](http://pe.usps.com).

Competitive products changes are identified by product as follows:

### Priority Mail Express

#### *Commercial Base and Plus Pricing Consolidated*

The Postal Service is consolidating Priority Mail Express “Commercial Base” and “Commercial Plus” into one “Commercial” price category. Consolidating the “Commercial Base” and “Commercial Plus” price categories will simplify the Priority Mail Express pricing structure. The eligibility standards for Priority Mail Express Commercial will mirror the current “Commercial Base” price category.

### Priority Mail

#### *Priority Mail Commercial Base and Plus Pricing Consolidated*

The Postal Service is consolidating the Priority Mail “Commercial Base” and “Commercial Plus” price categories into one “Commercial” price category. Consolidating the “Commercial Base” and “Commercial Plus” price categories will simplify the Priority Mail pricing structure. The eligibility standards for Priority Mail Commercial will mirror the current “Commercial Base” price category.

#### *Priority Mail Regional Rate Boxes Discontinued*

The Postal Service is discontinuing the Priority Mail Regional Rate product offering to simplify the Priority Mail offering.

### Return Services

#### *Parcel Return Service*

The Postal Service is revising standards for Parcel Return Service (PRS) to be a competitive product only available through a Negotiated Service Agreement (NSA). As a nonpublished offering, the standards will be removed

from the DMM, and the prices will be removed from Notice 123 – *Price List*.

### USPS Returns

The Postal Service is discontinuing the Certificate of Mailing and Signature Confirmation extra service options for USPS Returns® products.

### Mailer Services

#### *USPS Label Delivery Service*

The Postal Service is implementing USPS Label Delivery Service™ to provide customers with an option to have their domestic outbound and return mailing labels printed and delivered for a fee per label at a Post Office where available. USPS Label Delivery Service is not available for Air or Army Post Office/Diplomatic Post Office/Fleet Post Office (APO/FPO/DPO) addresses. Customers requesting USPS Label Delivery Service will be provided tracking information. A customer may request USPS Label Delivery Service at [usps.com](http://usps.com).

USPS Label Delivery Service is available for the following:

- Retail and Commercial Priority Mail Express and Priority Mail.
- First-Class Package Service — Retail®.
- First Class Package Service — Commercial.
- USPS Retail Ground®.
- Parcel Select Ground®.
- Priority Mail Return® service.
- First-Class Package Return® service.

No extra services are available with labels requested through USPS Label Delivery Service.

For USPS Label Delivery Service, the Postal Service will refund the postage and USPS Label Delivery Service fee if the label is not delivered. The Postal Service will refund the postage only if the label is delivered and not used.

### Other

#### *Zone Modification*

The Postal Service is modifying zone-price categories for all applicable competitive products. This zone modification will redefine the local zone and remove it as a zone-price category. The Postal Service will also split zones 1 and 2 into separate price categories. This will result in nine individual zone-price categories.

Additionally, the Postal Service is clarifying that the Zone 1 price applies to pieces mailed within the same 3-digit origin/destination (O/D) pairs and mailpieces mailed with different 3-digit O/D pairs whose centroids are up to 50 miles in distance.

**Competitive Products with No Product Changes**

No product changes are scheduled for the following competitive products:

- First-Class Package Service®.
- Parcel Select®.
- USPS Retail Ground.
- Recipient Services.
- Extra Services.

**Resources**

The Postal Service provides additional resources to assist customers with these price changes for competitive products. These tools include price lists, downloadable price files, and *Federal Register* notices, which are available on the Postal Explorer® website at [pe.usps.com](https://pe.usps.com).

These standards become effective January 22, 2023.

**Mailing Standards of the United States Postal Service, Domestic Mail Manual (DMM)**

\* \* \* \* \*

**100 Retail Mail Letters, Cards, Flats, and Parcels**

\* \* \* \* \*

**120 Retail Mail Priority Mail**

**123 Prices and Eligibility**

**1.0 Prices and Fees**

\* \* \* \* \*

*[Delete 1.5, "Regional Rate Boxes," and renumber current 1.6 and 1.7 as 1.5 and 1.6.]*

\* \* \* \* \*

**1.6 Nonstandard Fees**

*[Revise the introductory text of renumbered 1.6 to read as follows:]*

Except for Flat Rate packaging, a Priority Mail piece is subject to a nonstandard fee (see Notice 123 — *Price List*) as follows:

\* \* \* \* \*

**125 Mail Preparation**

**1.0 Preparation**

\* \* \* \* \*

*[Revise the title of 1.2 to read as follows:]*

**1.2 Sealing Flat Rate Packaging**

*[Revise the first sentence of 1.2 to read as follows:]*

When sealing a Flat Rate Envelope or Flat Rate Box, the container flaps must be able to close within the normal folds.\*\*\*

\* \* \* \* \*

**200 Commercial Mail Letters, Cards, Flats, and Parcels**

**201 Physical Standards**

\* \* \* \* \*

**7.0 Physical Standards for Parcels**

\* \* \* \* \*

**7.3 Maximum Weight and Size**

*[Revise the second sentence of 7.3 to read as follows:]*

\*\*\*Lower weight limits apply to parcels mailed at Priority Mail Cubic, First-Class Package Service — Commercial, USPS Marketing Mail, and Bound Printed Matter prices.\*\*\*

\* \* \* \* \*

**8.0 Additional Physical Standards by Class of Mail**

\* \* \* \* \*

**8.2 Priority Mail**

*[Revise the first sentence of 8.2 to read as follows:]*

The maximum weight is 70 pounds, except for cubic (20 pounds) parcels.\*\*\*

\* \* \* \* \*

**202 Elements on the Face of a Mailpiece**

\* \* \* \* \*

**3.0 Placement and Content of Mail Markings**

\* \* \* \* \*

**3.3 Priority Mail Express and Priority Mail Markings**

\* \* \* \* \*

**3.3.3 Additional Markings for Priority Mail Express and Priority Mail**

*[Revise the text of 3.3.3 to read as follows:]*

In addition to the basic price marking in 3.3.1 and 3.3.2, except for pieces paid using a USPS Returns service or permit imprint, Priority Mail Express and Priority Mail pieces claimed at Commercial prices also must bear the "Commercial" price marking, printed on the piece or produced as part of the meter imprint or PC Postage indicia. Place the "Commercial" price marking directly above, directly below, or to the left of the postage.

\* \* \* \* \*

**3.4 Priority Mail Cubic Markings**

\* \* \* \* \*

**3.4.2 Price Marking – Permit Imprint**

[Revise the first sentence of 3.4.2 to read as follows:]

Priority Mail permit imprint pieces claimed at the cubic price must be marked “Priority Mail” and bear the “cubic” marking (see 3.4.3 for soft pack and padded envelopes), printed on the piece or produced as part of the permit imprint indicia.\*\*\*

\* \* \* \* \*

**204 Barcode Standards**

\* \* \* \* \*

**2.0 Standards for Package and Extra Service Barcodes**

**2.1 Intelligent Mail Package Barcode**

**2.1.1 Definition**

[Revise the last sentence of 2.1.1 to read as follows:]

\*\*\*A ZIP + 4 is required to be encoded into the barcode for all returns products.

\* \* \* \* \*

**2.2 Other Package Barcodes**

\* \* \* \* \*

**2.2.11 Service Banner Text**

[Revise the text of 2.2.11 to read as follows:]

Except with Certified Mail, Registered Mail, Adult Signature, and Priority Mail Express or Priority Mail Open and Distribute services, mailers preparing extra service barcodes under 2.2 must use a “USPS TRACKING #” human-readable service banner text above the barcode on packages not requiring a signature at delivery, or a “USPS SIGNATURE TRACKING #” service banner text above the barcode on packages where a signature is required at delivery.

\* \* \* \* \*

**210 Commercial Mail Priority Mail Express**

**213 Prices and Eligibility**

**1.0 Prices and Fees**

\* \* \* \* \*

[Revise the title and introductory text of 1.3 to read as follows:]

**1.3 Commercial Prices**

Priority Mail Express commercial prices are less than Priority Mail Express retail prices (see Notice 123 — *Price List*). These prices are available to:

\* \* \* \* \*

[Delete 1.4, “Commercial Plus Prices,” in its entirety and renumber current 1.5 through 1.10 as 1.4 through 1.9.]

\* \* \* \* \*

**214 Postage Payment and Documentation**

**1.0 Basic Standards for Postage Payment Options**

[Add the following title above the introductory text of 1.0, revise the text to read as follows, and renumber current 1.1 as 1.2:]

**1.1 General**

Federal agencies and U.S. government officials mailing Priority Mail Express mailpieces may use the appropriate indicia, subject to 703.7.0. The mailer is responsible for properly paying postage.

\* \* \* \* \*

[Revise the title and introductory text of renumbered 1.2 to read as follows:]

**1.2 Commercial Pricing**

Commercial Priority Mail Express postage may be paid with:

\* \* \* \* \*

[Delete current 1.2, “Commercial Plus Pricing,” in its entirety.]

\* \* \* \* \*

**220 Commercial Mail Priority Mail**

**223 Prices and Eligibility**

**1.0 Prices and Fees**

**1.1 Price Application**

\* \* \* \* \*

[Revise the first sentence of item a. to read as follows:]

- a. Except for cubic items (see 1.1c), customers mailing Priority Mail mailpieces are charged per pound of the mailpiece; any fraction of a pound is rounded up to the next whole pound.\*\*\*

\* \* \* \* \*

[Delete items c. and e. in their entirety. Renumber current item d. as item c., and renumber current items f. and g. as items d. and e. Revise renumbered item d. to read as follows:]

- d. Priority Mail Open and Distribute tray boxes mailed at commercial prices are not based on weight, but are priced based on the tray box and zone to which they are sent.

\* \* \* \* \*



[Revise the title and introductory text of 1.2 to read as follows:]

1.2 Commercial Prices

For prices, see Notice 123 — Price List. Commercial prices are available for:

[Delete item a. of 1.2 in its entirety, and renumber current items b. through f. as items a. through e. Delete the last sentence of renumbered item c. referencing Regional Rate Boxes.]

\* \* \* \* \*

[Delete 1.3, “Commercial Plus Prices,” and 1.7, “Regional Rate Box Prices,” in their entirety. Renumber current 1.4 through 1.6 as 1.3 through 1.5, and renumber current 1.8 through 1.13 as 1.6 through 1.11.]

\* \* \* \* \*

1.10 Nonstandard Fees

[Revise the introductory text of renumbered 1.10 to read as follows:]

Except for Flat Rate packaging and Priority Mail Return service packages, a Priority Mail piece is subject to a nonstandard fee (see Notice 123 — Price List) as follows:

\* \* \* \* \*

3.0 Basic Eligibility Standards for Priority Mail

3.1 Description of Service

[Revise the last sentence of 3.1 to read as follows:]

\*\*\*Lower weight limits apply to cubic pieces (see 1.4); APO/FPO mail is subject to 703.2.0 and 703.4.0, and Department of State mail is subject to 703.3.0.

\* \* \* \* \*

224 Postage Payment and Documentation

1.0 Basic Standards for Postage Payment

[Delete the title of 1.1, renumber current 1.1.1 as 1.1 and revise the title and introductory text to read as follows:]

1.1 Commercial Pricing

Priority Mail commercial postage may be paid with:

[Delete item a. in its entirety and renumber current items b. through e. as items a. through d.]

[Delete 1.1.2, “Commercial Plus Pricing,” in its entirety.]

\* \* \* \* \*

225 Mail Preparation

1.0 General Information for Mail Preparation

\* \* \* \* \*

[Revise the title of 1.2 to read as follows:]

1.2 Sealing Flat Rate Packaging

[Revise the first sentence of 1.2 to read as follows:]

When sealing a Flat Rate Envelope or Flat Rate Box, the container flaps must be able to close within the normal folds.\*\*\*

\* \* \* \* \*

500 Additional Mailing Services

503 Extra Services

1.0 Basic Standards for All Extra Services

\* \* \* \* \*

1.4 Eligibility for Extra Services

\* \* \* \* \*

1.4.3 Eligibility — Domestic Returns

\* \* \* \* \*

Exhibit 1.4.3 Eligibility — Domestic Returns

[Delete the “Signature Confirmation” option from both the “Paid by EPS Account or by Permit Holder” and the “Paid by Sender” sections of the table. Delete the “Certificate of Mailing” option from the “Paid by Sender” section of the table. Delete the “Parcel Return Service” line item from Exhibit 1.4.3.]

\* \* \* \* \*

4.0 Insured Mail

\* \* \* \* \*

4.3 Basic Standards

4.3.1 Description

\* \* \* \* \*

[Revise the third sentence of item a. to read as follows:]

- a. \*\*\*For customer-generated integrated barcodes used for USPS Returns service, the returns account holder must provide USPS with electronic data in a shipping services file, version 1.6 or higher, that identifies the USPS Tracking number of the insured return package, total postage paid, insurance fee paid, declared value, mailing date, origin ZIP Code, and delivery ZIP Code, along with the recipient’s name and address information.\*\*\*

\* \* \* \* \*

505 Return Services

\* \* \* \* \*

**3.0 USPS Returns Service****3.1 Basic Standards**

\* \* \* \* \*

**3.1.3 Postage and Prices**

\* \* \* \* \*

*[Revise the text of 3.1.3b(1) to read as follows:]*

1. Priority Mail commercial prices are available for account holders using Priority Mail Return Service, when all applicable requirements are met.

*[Delete 3.1.3b(2) in its entirety and renumber current 3.1.3b(3) and 3.1.3b(4) as 3.1.3b(2) and 3.1.3b(3).]*

\* \* \* \* \*

*[Delete 3.1.3c(2) and 3.1.3c(3) in their entirety and renumber current 3.1.3c(4) as 3.1.3c(2).]*

\* \* \* \* \*

**3.1.4 Labels**

\* \* \* \* \*

*[Add new 3.1.4a(6) to read as follows:]*

6. Through USPS Label Delivery Service under 507.12.0.

\* \* \* \* \*

**3.2 Additional Standards**

\* \* \* \* \*

*[Revise the last sentence of item a. to read as follows:]*

- a. \*\*\*Commercial prices are the same as for outbound Priority Mail in Notice 123 — Price List.

\* \* \* \* \*

**4.0 Parcel Return Service***[Delete the text under 4.0 in its entirety and add new text under 4.0 to read as follows:]*

Parcel Return Service (PRS) applies to parcels that are picked up in bulk by authorized permit holders or their agents. Parcel Return Service is only available through a Negotiated Service Agreement (NSA) (see 709.1.0). Contact a USPS sales representative for additional details.

\* \* \* \* \*

**507 Mailer Services**

\* \* \* \* \*

**5.0 Package Intercept**

\* \* \* \* \*

**5.2 Postage and Fees***[Revise the fourth sentence in the introductory text of 5.2 to read as follows:]*

\*\*\*Priority Mail commercial prices are charged for the new Priority Mail piece from the location where intercepted to the new destination based on the dimensions, weight, and zone of the piece or the flat-rate price, if applicable, along with any applicable extra services fees.\*\*\*

\* \* \* \* \*

**7.0 Pickup on Demand Service****7.1 Postage and Fees****7.1.1 Postage***[Revise the text of 7.1.1 to read as follows:]*

The correct amount of postage must be affixed to each piece except for the following:

- a. A Priority Mail Express label paid with a corporate account;
- b. Packages with a USPS Returns label affixed (under 505.3.0); and
- c. Manifest mailings paid by permit imprint indicia approved by Business Mailer Support (BMS).

\* \* \* \* \*

**7.2 Basic Standards****7.2.1 Availability**

\* \* \* \* \*

*[Delete item i., "Parcel Return Service," and renumber current items j. through n. as items i. through m.]*

\* \* \* \* \*

*[Add new 12.0 to read as follows:]***12.0 USPS Label Delivery Service****12.1 Description**

USPS Label Delivery Service provides customers with an option to have the Postal Service print and deliver their domestic outbound and return mailing labels for a fee per label at a Post Office where available. USPS Label Delivery Service is not available for Air or Army Post Office/Diplomatic Post Office/Fleet Post Office (APO/FPO/DPO) addresses. Customers requesting USPS Label Delivery Service will be provided tracking information.

**12.2 Eligibility**

USPS Label Delivery Service is available for the following:

- a. Retail and Commercial Priority Mail Express and Priority Mail.
- b. First-Class Package Service — Retail.

- c. First Class Package Service — Commercial.
- d. USPS Retail Ground.
- e. Parcel Select Ground.
- f. USPS Returns Service.

**12.3 Extra Services**

No extra services are available with labels requested through USPS Label Delivery Service.

**12.4 Requesting USPS Label Delivery Service**

A customer may request USPS Label Delivery Service at [usps.com](https://usps.com).

**12.5 Fee**

The USPS Label Delivery Service fee is listed in Notice 123 — *Price List*.

\* \* \* \* \*

**600 Basic Standards for All Mailing Services**

\* \* \* \* \*

**602 Addressing**

**1.0 Elements of Addressing**

\* \* \* \* \*

**1.5 Return Addresses**

\* \* \* \* \*

**1.5.3 Required Use of Return Addresses**

\* \* \* \* \*

*[Revise the text of item q. to read as follows:]*

- q. USPS Returns service.

\* \* \* \* \*

**604 Postage Payment Methods and Refunds**

\* \* \* \* \*

**9.0 Exchanges and Refunds**

\* \* \* \* \*

**9.2 Postage and Fee Refunds**

\* \* \* \* \*

**9.2.3 Full Refund**

\* \* \* \* \*

*[Add new item o. to read as follows:]*

- o. For USPS Label Delivery Service, the Postal Service will refund the postage and USPS Label Delivery Service fee if the label was not delivered. The Postal

Service will refund the postage only if the label is delivered and not used.

\* \* \* \* \*

**608 Postal Information and Resources**

\* \* \* \* \*

**7.0 Trademarks and Copyrights of the USPS**

**7.1 USPS Trademarks**

*[Revise the last sentence of the introductory text of 7.1 to read as follows:]*

\*\*\*Information on USPS trademarks is available at [usps.com](https://usps.com) or by contacting General Counsel, USPS Headquarters (see 8.1 for address).

\* \* \* \* \*

*[Delete “Commercial Base” and “Commercial Plus” from the list of trademarks under 7.1.]*

\* \* \* \* \*

**9.0 Postal Zones**

\* \* \* \* \*

**9.2 Application**

\* \* \* \* \*

*[Revise the last sentence of item c. to read as follows:]*

- c. \*\*\*If such mail transits any area served by USPS at USPS expense and the distance from the place of mailing to the embarkation point or from the debarkation point to the place of delivery is more than Zone 1 for such mail, postage is assessed by the distance from the place of mailing to the embarkation point or from the debarkation point to the place of delivery of such mail, as the case may be.

\* \* \* \* \*

*[Revise the title of 9.4 to read as follows:]*

**9.4 Definition**

*[Revise the title and text of 9.4.1 to read as follows:]*

**9.4.1 Local**

“Local” applies to USPS Connect Local and USPS Connect Local Mail pieces deposited at any Post Office for delivery to addresses within the delivery area of that Post Office. For various types of Post Offices, “Local” applies to all mail that both originates and destines within:

\* \* \* \* \*

[Revise the title and introductory text of 9.4.2 to read as follows:]

**9.4.2 Zones**

Zones are defined as follows:

[Revise the text of item a. to read as follows:]

- a. The Zone 1 price applies to pieces mailed within the same 3-digit origin/destination (O/D) pairs. The Zone 1 price also includes pieces mailed with different 3-digit O/D pairs, whose centroids are up to 50 miles in distance.

\* \* \* \* \*

**10.0 Forms of Identification**

\* \* \* \* \*

**10.2 Products and Services Requiring Acceptable Identification**

\* \* \* \* \*

**Exhibit 10.2 Products and Services Requiring Acceptable Identification**

\* \* \* \* \*

[Delete the “Parcel Return Service” line item in Exhibit 10.2.]

\* \* \* \* \*

**10.3 Acceptable Primary Forms of Photo Identification**

\* \* \* \* \*

**Exhibit 10.3 Acceptable Primary Forms of Photo Identification per Product and Service**

\* \* \* \* \*

[Delete the “Parcel Return Service” line item in Exhibit 10.3.]

\* \* \* \* \*

**700 Special Standards**

\* \* \* \* \*

**705 Advanced Preparation and Special Postage Payment Systems**

\* \* \* \* \*

**18.0 Priority Mail Express Open and Distribute and Priority Mail Open and Distribute**

**18.1 Prices and Fees**

**18.1.1 Basis of Price**

\* \* \* \* \*

[Revise the first sentence of item b. to read as follows:]

- b. Priority Mail commercial tray box postage is based on the tray box and zone.\*\*\*

\* \* \* \* \*

**Index**

\* \* \* \* \*

**L**

[Add “Label Delivery Service, 507.12.0” alphabetically under “L.”]

\* \* \* \* \*

**P**

\* \* \* \* \*

[Delete “Parcel Return Service (PRS), 505.40” in its entirety.]

\* \* \* \* \*

**Parcel Select**

[Delete the “Parcel Return Service, 505.4.0” line item under “Parcel Select.”]

\* \* \* \* \*

**Priority Mail**

[Delete the “Regional Rate, 223.1.2” line item under “Priority Mail.”]

\* \* \* \* \*

**R**

\* \* \* \* \*

**return services**

[Delete the “parcel return service, 505.4.0” line item under “return services.”]

\* \* \* \* \*

The Postal Service will incorporate these revisions into the January 22, 2023, edition of the online DMM, which is available via Postal Explorer at [pe.usps.com](https://pe.usps.com).

## Publications

### Publication 223 Revision: Directives and Forms Update

Effective January 12, 2023, Publication 223, *Directives and Forms Catalog*, is revised to include current information for the items noted in this article. See Chapter 1 of Publication 223 for information on how to order directives and forms. Publication 223 is available online at [about.usps.com/publications/pub223.pdf](https://about.usps.com/publications/pub223.pdf).

#### New

- HBK AS-805-I, *United States Postal Service Information Security Requirements for Suppliers*.
- HBK EL-915, *Human Resources Shared Service Center Agreement Between the United States Postal Service and the American Postal Workers Union, AFL-CIO, 2021-2024*.
- MI AS-800-2022-11, *Requirements for Permitting Postal Service Data and Services Outside the United States*.
- MI AS-800-2022-12, *Media Data Disposal and Destruction*.
- MI AS-810-2022-14, *Cyber Risk Enterprise Network Scanning: Customer Impact Resolution*.
- MAN ELM, *Employee and Labor Relations Manual*.
- MAN IMM, *Mailing Standards of the United States Postal Service, International Mail Manual*.
- MAN SPP, *Supplying Principles and Practices*.
- NOT 123, *Price List*.
- PUB 28, *Postal Addressing Standards*.
- PUB 223, *Directives and Forms Catalog*.
- PUB 685, *Publication for Streamlined Mail Acceptance for Letters and Flats*.
- WHD PUB 1420, *Employee Rights and Responsibilities Under the Family and Medical Leave Act*.
- PS 3203-X, *Personalized Stamped Envelopes and Cards Order Form*.

#### Revised

- HBK F-101, *Field Accounting Procedures*.
- HBK M-32, *Management Operating Data System (MODS)*.
- MAN DMM, *Mailing Standards of the United States Postal Service, Domestic Mail Manual*.
- PS 3553, *CASS Summary Report*.
- PS 3849, *We Redeliver for You!*
- PS 3881-X, *Supplier and Payee Electronic Funds Transfer (EFT) Enrollment*.
- PS 3972, *Leave Year 2023 Absence Analysis*.

#### Obsolete

PSIN	Ed. Date	Title	Replaced By
HBK AS-710	2/90	<i>Customer Guide to Purchasing and Requisitioning</i>	N/A
HBK EL-301	6/89	<i>Guidelines for Processing Personnel Actions</i>	N/A
HBK P-2	3/99	<i>Design and Construction Purchasing Practices</i>	N/A
MI AS-810-2020-3	12/20	<i>Cyber Risk Enterprise Network Scanning: Customer Impact Resolution</i>	MI AS-810-2022-14
MI EL-620-2017-2	5/17	<i>Guidelines to Finance Career Awareness Conferences</i>	N/A
MOP CSO-04-13-2016	4/16	<i>Reporting Releases of Hazardous and Regulated Substances to the Environment</i>	N/A
MOP CSO-04-22-2016	4/16	<i>Signature Requirements for Environmental Documents</i>	N/A
PUB 5-A-C	7/01	<i>Let's Do Business</i>	N/A
PUB 5-A-S	7/01	<i>Let's Do Business</i>	N/A
PUB 5-S	7/01	<i>Negociemos (Let's Do Business)</i>	N/A
PUB 112	10/01	<i>National Electronic Catalog</i>	N/A
PUB 241	4/03	<i>"A Diversified Team" USPS Diversity Brochure</i>	N/A
PUB 247	7/02	<i>Supply and Equipment Catalog</i>	N/A

# Organization Information

## Domestic Mail

### Labeling List Changes

Effective February 1, 2023, the Postal Service™ will revise Labeling List(s) L007, L051, and L606 to reflect changes in mail processing operations. Mailers are expected to label according to these revised lists for mailings inducted on or after the February 1, 2023, effective date through the March 31, 2023, expiration date.

### Labeling Lists

\* \* \* \* \*

#### L007 5-Digit Scheme – Periodicals, Standard Mail, and Package Services Flats in Bundles

##### Changes

Column A Destination ZIP Codes	Column B Label Container To (Change From)	Column B Label Container To (Change To)
01450	GARDNER MA 01440	GROTON MA 01450
01451	GARDNER MA 01440	HARVARD MA 01451
01462	CHARLTON MA 01507	LUNENBURG MA 01462
01463	GARDNER MA 01440	PEPPERELL MA 01463
01504	LINCOLN MA 01773	BLACKSTONE MA 01504
01510	CHARLTON MA 01507	CLINTON MA 01510
01518	WEBSTER MA 01570	FISKDALE MA 01518
01519	LINCOLN MA 01773	GRAFTON MA 01519
01520	LEOMINSTER MA 01453	HOLDEN MA 01520
01521	WEBSTER MA 01570	HOLLAND MA 01521
01527	AUBURN MA 01501	MILLBURY MA 01527
01532	FITCHBURG MA 01420	NORTHBOROUGH MA 01532
01540	WEBSTER MA 01570	OXFORD MA 01540
01550	LITTLETON MA 01460	SOUTHBRIDGE MA 01550
01562	CHARLTON MA 01507	SPENCER MA 01562
01566	WEBSTER MA 01570	STURBRIDGE MA 01566
01569	LITTLETON MA 01460	UXBRIDGE MA 01569
01571	WEBSTER MA 01570	DUDLEY MA 01571
01581	SHREWSBURY MA 01545	WESTBOROUGH MA 01581
01583	LINCOLN MA 01773	WEST BOYLSTON MA 01583
01586	AUBURN MA 01501	WEST MILLBURY MA 01586
01590	LITTLETON MA 01460	SUTTON MA 01590
01602	AUBURN MA 01501	WORCESTER MA 01602
01612	AUBURN MA 01501	PAXTON MA 01612
01720	BOXBOROUGH MA 01719	ACTON MA 01720
01741	WORCESTER MA 01604	CARLISLE MA 01741
01745	LINCOLN MA 01773	FAYVILLE MA 01745
01746	ASHLAND MA 01721	HOLLISTON MA 01746
01749	WORCESTER MA 01604	HUDSON MA 01749
01752	HOPKINTON MA 01748	MARLBOROUGH MA 01752
01757	ASHLAND MA 01721	MILFORD MA 01757
01775	LINCOLN MA 01773	STOW MA 01775
01778	NATICK MA 01760	WAYLAND MA 01778

Column A Destination ZIP Codes	Column B Label Container To (Change From)	Column B Label Container To (Change To)
02125	DORCHESTER MA 02121	DORCHESTER MA 02125
02127	DORCHESTER MA 02121	SOUTH BOSTON MA 02127
02129	BOSTON MA 02128	CHARLESTOWN MA 02129
02131	MILTON MA 02186	ROSLINDALE MA 02131
02132	JAMAICA PLAIN MA 02130	WEST ROXBURY MA 02132
02135	MATTAPAN MA 02126	BRIGHTON MA 02135
02140	BOSTON MA 02108	CAMBRIDGE MA 02140
02150	BOSTON MA 02128	CHELSEA MA 02150
02152	EVERETT MA 02149	WINTHROP MA 02152
02171	BOSTON MA 02116	QUINCY MA 02171
02176	REVERE MA 02151	MELROSE MA 02176
02180	HYDE PARK MA 02136	STONEHAM MA 02180
02188	MILTON MA 02186	WEYMOUTH MA 02188
02189	BOSTON MA 02116	EAST WEYMOUTH MA 02189
02190	BRAINTREE MA 02184	SOUTH WEYMOUTH MA 02190
02191	QUINCY MA 02169	NORTH WEYMOUTH MA 02191
02199	BOSTON MA 02115	BOSTON MA 02199
02215	BOSTON MA 02115	BOSTON MA 02215
02269	QUINCY MA 02269	QUINCY MA 02169
02458	WATERTOWN MA 02471	NEWTON MA 02458
02460	WATERTOWN MA 02471	NEWTON MA 02458
02461	NEWTON CENTER MA 02459	NEWTON HIGHLANDS MA 02461
02462	WATERTOWN MA 02471	NEWTON MA 02458
02465	NEWTON CENTER MA 02459	WEST NEWTON MA 02465
02468	AUBURNDALE MA 02466	WABAN MA 02468
02482	WELLESLEY HILLS MA 02481	WELLESLEY MA 02482
02493	AUBURNDALE MA 02466	WESTON MA 02493
60403	JOLIET IL 60435	CREST HILL IL 60403
60404	JOLIET IL 60435	CREST HILL IL 60403
60431	JOLIET IL 60435	CREST HILL IL 60403
60434	JOLIET IL 60435	CREST HILL IL 60403
60435	JOLIET IL 60435	CREST HILL IL 60403

**Newly Added**

<b>Column A Destination ZIP Codes</b>	<b>Column B Label Container To (Added To)</b>
13304	UTICA NY 13501
13424	UTICA NY 13501
13431	UTICA NY 13501
13477	UTICA NY 13501

**Deleted**

<b>Column A Destination ZIP Codes</b>	<b>Column B Label Container To (Deleted From)</b>
01001	AGAWAM MA 01001
01002	AMHERST MA 01002
01003	AMHERST MA 01002
01004	AMHERST MA 01002
01007	BELCHERTOWN MA 01007
01013	CHICOPEE MA 01013
01020	CHICOPEE MA 01013
01022	CHICOPEE MA 01013
01027	BELCHERTOWN MA 01007
01028	EAST LONGMEADOW MA 01028
01030	AGAWAM MA 01001
01033	AMHERST MA 01002
01035	AMHERST MA 01002
01036	EAST LONGMEADOW MA 01028
01040	AGAWAM MA 01001
01056	EAST LONGMEADOW MA 01028
01057	AMHERST MA 01002
01059	AMHERST MA 01002
01060	BELCHERTOWN MA 01007
01062	BELCHERTOWN MA 01007
01069	AMHERST MA 01002
01073	AMHERST MA 01002
01075	AGAWAM MA 01001
01077	BELCHERTOWN MA 01007
01080	AMHERST MA 01002
01082	AMHERST MA 01002
01085	BELCHERTOWN MA 01007
01089	AGAWAM MA 01001
01095	EAST LONGMEADOW MA 01028
01101	SPRINGFIELD MA 01102
01102	SPRINGFIELD MA 01102
01103	SPRINGFIELD MA 01102
01104	SPRINGFIELD MA 01107
01105	SPRINGFIELD MA 01107
01106	EAST LONGMEADOW MA 01028
01107	SPRINGFIELD MA 01107
01108	SPRINGFIELD MA 01102
01109	SPRINGFIELD MA 01102
01118	EAST LONGMEADOW MA 01028
01119	SPRINGFIELD MA 01102
01128	EAST LONGMEADOW MA 01028
01129	SPRINGFIELD MA 01102
01138	SPRINGFIELD MA 01102
01139	SPRINGFIELD MA 01102
01151	EAST LONGMEADOW MA 01028
01201	PITTSFIELD MA 01201
01220	ADAMS MA 01220
01226	PITTSFIELD MA 01201
01230	ADAMS MA 01220
01238	ADAMS MA 01220
01240	PITTSFIELD MA 01201
01247	ADAMS MA 01220

<b>Column A Destination ZIP Codes</b>	<b>Column B Label Container To (Deleted From)</b>
01267	ADAMS MA 01220
06001	AVON CT 06001
06002	AVON CT 06001
06010	BRISTOL CT 06010
06011	BRISTOL CT 06010
06013	BURLINGTON CT 06013
06016	BROAD BROOK CT 06016
06019	CANTON CT 06019
06026	AVON CT 06001
06029	BROAD BROOK CT 06016
06030	BROAD BROOK CT 06016
06032	BROAD BROOK CT 06016
06033	BURLINGTON CT 06013
06035	CANTON CT 06019
06037	BERLIN CT 06037
06039	CANTON CT 06019
06040	MANCHESTER CT 06040
06042	MANCHESTER CT 06040
06043	MANCHESTER CT 06040
06050	CANTON CT 06019
06051	BERLIN CT 06037
06052	BERLIN CT 06037
06053	BERLIN CT 06037
06060	CANTON CT 06019
06062	BROAD BROOK CT 06016
06063	CANTON CT 06019
06066	MANCHESTER CT 06040
06067	BURLINGTON CT 06013
06070	BURLINGTON CT 06013
06071	BERLIN CT 06037
06073	BURLINGTON CT 06013
06074	MANCHESTER CT 06040
06078	AVON CT 06001
06081	BURLINGTON CT 06013
06082	ENFIELD CT 06082
06083	ENFIELD CT 06082
06084	AVON CT 06001
06085	AVON CT 06001
06088	ENFIELD CT 06082
06089	AVON CT 06001
06092	ENFIELD CT 06082
06093	AVON CT 06001
06095	AVON CT 06001
06096	ENFIELD CT 06082
06103	CANTON CT 06019
06105	HARTFORD CT 06105
06106	HARTFORD CT 06105
06107	WEST HARTFORD CT 06107
06108	EAST HARTFORD CT 06108
06109	EAST HARTFORD CT 06108
06110	HARTFORD CT 06105
06111	WEST HARTFORD CT 06107
06112	HARTFORD CT 06105

Column A Destination ZIP Codes	Column B Label Container To (Deleted From)
06114	EAST HARTFORD CT 06108
06117	WEST HARTFORD CT 06107
06118	EAST HARTFORD CT 06108
06119	HARTFORD CT 06105
06120	HARTFORD CT 06105
06126	CANTON CT 06019
06128	EAST HARTFORD CT 06108
06133	HARTFORD CT 06105
06138	EAST HARTFORD CT 06108
06226	WILLIMANTIC CT 06226
06231	AMSTON CT 06231
06234	WILLIMANTIC CT 06226
06237	AMSTON CT 06231
06238	AMSTON CT 06231
06239	WILLIMANTIC CT 06226
06241	AMSTON CT 06231
06248	WILLIMANTIC CT 06226
06249	WILLIMANTIC CT 06226
06250	AMSTON CT 06231
06254	WILLIMANTIC CT 06226
06255	WILLIMANTIC CT 06226
06260	WILLIMANTIC CT 06226
06268	AMSTON CT 06231
06277	WILLIMANTIC CT 06226
06279	AMSTON CT 06231
06281	AMSTON CT 06231
06320	AMSTON CT 06231
06357	AMSTON CT 06231
06360	WILLIMANTIC CT 06226
06371	AMSTON CT 06231
06385	AMSTON CT 06231
06401	ANSONIA CT 06401
06403	BEACON FALLS CT 06403
06405	BEACON FALLS CT 06403
06410	CHESHIRE CT 06410
06413	CLINTON CT 06413
06415	CHESHIRE CT 06410
06416	CROMWELL CT 06416
06417	CHESHIRE CT 06410
06418	ANSONIA CT 06401
06419	ANSONIA CT 06401
06420	SALEM CT 06420
06424	ANSONIA CT 06401
06426	CHESHIRE CT 06410
06437	SALEM CT 06420
06443	SALEM CT 06420
06447	ANSONIA CT 06401
06450	MERIDEN CT 06450
06451	MERIDEN CT 06450
06457	CROMWELL CT 06416
06460	CROMWELL CT 06416
06461	CROMWELL CT 06416
06468	CLINTON CT 06413
06470	CLINTON CT 06413
06472	CHESHIRE CT 06410
06473	CLINTON CT 06413
06475	BEACON FALLS CT 06403
06477	SALEM CT 06420
06478	MERIDEN CT 06450

Column A Destination ZIP Codes	Column B Label Container To (Deleted From)
06479	CLINTON CT 06413
06480	CLINTON CT 06413
06482	BEACON FALLS CT 06403
06483	MERIDEN CT 06450
06484	BEACON FALLS CT 06403
06488	CLINTON CT 06413
06489	CHESHIRE CT 06410
06492	CHESHIRE CT 06410
06510	CANTON CT 06019
06511	NEW HAVEN CT 06511
06512	EAST HAVEN CT 06512
06513	NEW HAVEN CT 06513
06514	NEW HAVEN CT 06511
06515	EAST HAVEN CT 06512
06516	EAST HAVEN CT 06512
06517	NEW HAVEN CT 06511
06518	NEW HAVEN CT 06511
06519	NEW HAVEN CT 06513
06520	CANTON CT 06019
06524	EAST HAVEN CT 06512
06525	EAST HAVEN CT 06512
06702	CANTON CT 06019
06704	WATERBURY CT 06704
06705	WATERBURY CT 06704
06706	WATERBURY CT 06706
06708	WATERBURY CT 06706
06710	WATERBURY CT 06704
06712	WATERBURY CT 06706
06716	WATERBURY CT 06704
06759	CANTON CT 06019
06762	WATERBURY CT 06704
06770	WATERBURY CT 06704
06776	CANTON CT 06019
06779	WATERBURY CT 06706
06786	WATERBURY CT 06704
06787	WATERBURY CT 06706
06790	WATERBURY CT 06706
06791	WATERBURY CT 06706
06795	WATERBURY CT 06704
06798	WATERBURY CT 06706

\* \* \* \* \*

**L051 DSCF for Parcel Select****Changes**

Column A Destination ZIP Codes	Column B Label To (Change From)	Column B Label To (Change To)
356	DIS BIRMINGHAM AL 350	SCF HUNTSVILLE AL 357
357	DIS BIRMINGHAM AL 350	SCF HUNTSVILLE AL 357
358	DIS BIRMINGHAM AL 350	SCF HUNTSVILLE AL 357

\* \* \* \* \*

Article continues on page [37](#).



# Pull-Out Information

## Elimination of Corporate Accounts

The Postal Service™ is discontinuing USPSCA®, a corporate account payment method used for Express Mail Corporate Accounts and Priority Mail Express Manifest Accounts. USPSCAs — also known as United States Postal Service Corporate Accounts — are prefunded by customers to ship documents or packages by Priority Mail Express®.

Effective January 1, 2023, the Postal Service began closing inactive USPSCA accounts and will discontinue the corporate account payment method on July 1 due to rising costs and declining demand.

Customers who use USPSCA are encouraged to switch to an available alternative payment method. Alternative payment methods may include Click-N-Ship® (CNS), USPS Ship, Electronic Verification System (eVS®), ePostage®, PC Postage®, or Meter.

For information on how to migrate, customers should contact their Sales Account/Business Service Network (BSN) Representative or their local Post Office™, or they can send an email to the Mailing and Shipping Solutions Center at [MSSC@usps.gov](mailto:MSSC@usps.gov).

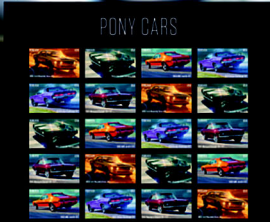
Any account with a balance can make payments or request a refund by contacting [MSSC@usps.gov](mailto:MSSC@usps.gov):

- Refund requests must include a signed authorization on letterhead, the EMCA number, business name, and location.
- Accounts with a negative balance after July 1, 2023, will be sent to Accounts Receivable for collection.

For questions about the elimination of Corporate Accounts, send an email to [ShippingServices@usps.gov](mailto:ShippingServices@usps.gov).

— *Shipping and Commerce Product Management,  
Business Solutions, 1-12-23*

# Enjoy the Thrill of Iconic **Pony Cars** Forever® Stamps



**ON SALE NATIONWIDE: AUGUST 25, 2022**  
Sold as a full pane.

## Fraud

### Invalid USPS Corporate Account Numbers

Provide this listing to Contract Postal Units and acceptance clerks in non-POS locations without intranet access to validate a USPS Corporate Account (USPSCA) number online. For all other locations, online USPSCA validation is preferred. This list supersedes all previous notices, which you must recycle.

Acceptance clerks must not accept Priority Mail Express® shipments bearing an invalid USPSCA number in the “Payment by Account” or “Agreement Number” section of the label or form.

**Note:** The first 6 digits of a 9-digit Custom Designed Service and Next Day Pickup Agreement make up the Corporate Account Number.

005691	047013	110398	312504	381344	487115	735073	940357	941432	950148	951337	980404	982505
008392	049303	115153	314726	381408	601194	752076	940386	941596	950211	951543	980501	983056
008702	056013	128100	315029	381452	601351	752838	940480	941721	950305	951546	980542	983115
009765	070174	131270	332083	381529	601872	789013	940488	941729	950319	951570	980664	992230
012246	076080	142020	334003	381543	604333	895479	940490	941850	950512	951623	980671	992529
015759	076880	142203	366005	381619	672526	915243	940516	941879	950692	951637	980683	992553
016636	077498	142272	370005	381798	701951	921790	940529	941923	950757	951784	981762	997170
018005	077779	142822	370007	381898	725044	927981	940535	941987	950804	951848	981864	
018339	080323	152668	372274	386061	730058	931262	940607	945548	950816	951875	981921	
019521	080648	152702	372884	436110	730068	933428	940829	946274	950847	951924	981935	
021636	080714	197020	373004	441190	730228	939512	940987	948360	950853	951938	981984	
022631	095816	198160	374006	441677	730602	940019	941004	949517	950881	951941	982027	
022913	096703	221361	374095	441787	730725	940082	941101	949545	950934	951947	982075	
028907	100039	222002	376122	441972	730836	940086	941189	949611	950985	951979	982215	
029581	106599	235435	379251	462469	730847	940208	941222	949614	951064	967069	982386	
029949	108867	276273	379505	481264	730940	940213	941297	950075	951112	967216	982425	
031234	109031	301104	381198	481298	731432	940321	941355	950089	951274	968633	982446	
040323	109426	301652	381251	481366	731451	940337	941383	950111	951316	980071	982480	



214 303 6239	to	6258	252 833 3286	to	3297	258 405 6900	to	6999	262 337 4800	to	4899
214 877 4251	to	4273	253 470 3948	to	3999	258 405 7000	to	7099	262 337 4900	to	4999
215 252 3918	to	3992	253 565 7400	to	7499	258 405 7100	to	7199	262 337 5000	to	5099
<b>217 585 1400</b>	<b>to</b>	<b>1499</b>	254 252 2800	to	2899	258 405 7200	to	7299	262 337 5100	to	5199
218 698 2157	to	2199	254 252 2900	to	2999	258 405 7300	to	7399	262 337 5200	to	5299
218 746 0800	to	0899	254 252 3000	to	3099	258 405 7400	to	7499	262 337 5300	to	5399
219 095 0100	to	0399	254 252 3100	to	3199	258 405 7800	to	7899	262 337 5400	to	5499
219 389 1885	to	1899	254 252 3200	to	3299	258 405 7900	to	7999	262 337 5500	to	5599
219 568 7435	to	7456	254 252 3300	to	3399	258 405 8000	to	8099	262 337 5600	to	5699
219 568 7469	to	7487	254 252 3400	to	3499	258 405 8100	to	8199	262 337 5700	to	5799
<b>221 316 5757</b>	<b>to</b>	<b>5799</b>	254 252 3500	to	3599	258 405 8200	to	8299	262 337 5800	to	5899
223 476 3914	to	3999	254 252 3600	to	3699	258 405 8300	to	8399	262 337 5900	to	5999
223 565 4921	to	4957	254 252 3700	to	3799	258 405 8400	to	8499	262 337 6000	to	6099
223 565 4979	to	4999	254 252 3800	to	3899	258 405 8500	to	8599	262 337 6100	to	6199
224 636 4745	to	4765	254 252 3900	to	3999	258 405 8600	to	8699	262 337 6200	to	6299
224 636 4776	to	4799	254 252 4000	to	4099	258 405 8700	to	8799	262 337 6300	to	6399
224 636 4855	to	4885	254 252 4100	to	4199	258 405 8800	to	8899	262 337 6400	to	6499
224 636 4932	to	4948	254 252 4200	to	4299	258 405 8900	to	8999	262 337 6500	to	6599
224 636 4950	to	4962	254 252 4300	to	4399	258 405 9600	to	9699	262 337 6600	to	6699
224 636 4985	to	4999	254 252 4400	to	4499	258 405 9700	to	9799	262 337 6700	to	6799
224 723 0757	to	0799	254 252 4500	to	4599	258 405 9800	to	9899	262 337 6800	to	6899
224 730 2207	to	2299	254 252 4600	to	4699	258 405 9900	to	9999	262 337 6900	to	6999
225 970 0500	to	0599	254 252 4700	to	4799	259 014 9989	to	9999	262 337 7000	to	7099
225 970 0600	to	0699	254 252 4800	to	4899	259 062 4788	to	4798	262 337 7100	to	7199
225 970 0700	to	0799	254 252 4900	to	4999	259 218 1400	to	1499	262 337 7200	to	7299
227 033 8679	to	8699	254 565 7607	to	7700	259 218 1500	to	1599	262 337 7300	to	7399
227 275 9400	to	9999	254 907 1203	to	1299	259 218 1600	to	1699	262 337 7400	to	7499
228 463 2456	to	2499	255 185 9527	to	9599	259 590 5654	to	5699	262 337 7500	to	7599
228 510 4852	to	4899	255 397 1557	to	1576	259 670 8268	to	8299	262 337 7600	to	7699
229 462 8451	to	8475	255 425 2989	to	2998	259 835 6238	to	6399	262 337 7700	to	7799
229 668 5977	to	5999	255 728 6412	to	6499	259 835 6701	to	6799	262 337 7800	to	7899
229 923 9176	to	9199	255 728 9842	to	9899	<b>260 224 4600</b>	<b>to</b>	<b>4699</b>	262 337 7900	to	7999
229 924 6696	to	6699	256 134 9833	to	9839	260 224 5941	to	5999	262 337 8000	to	8099
<b>230 051 9500</b>	<b>to</b>	<b>9999</b>	256 134 9840	to	9849	260 310 2821	to	2899	262 337 8100	to	8199
236 366 2431	to	2499	256 134 9850	to	9859	260 452 0010	to	0022	262 337 8200	to	8299
236 607 6882	to	6899	256 134 9860	to	9869	260 452 0049	to	4299	262 337 8300	to	8399
236 660 5853	to	5872	256 134 9870	to	9879	260 553 8200	to	8299	262 337 8400	to	8499
239 322 5200	to	5299	256 134 9880	to	9889	260 553 8600	to	8699	262 337 8500	to	8599
239 322 5400	to	5499	256 134 9890	to	9899	260 553 9600	to	9799	262 337 8600	to	8699
239 322 5600	to	5699	256 247 6900	to	6999	260 553 9800	to	9899	262 337 8700	to	8799
239 322 5800	to	5899	256 550 5536	to	5545	260 553 9900	to	9999	262 337 8800	to	8899
239 322 5900	to	5999	256 799 2257	to	2299	260 761 1603	to	1662	262 337 8900	to	8999
239 607 4783	to	4799	257 154 8763	to	8799	261 183 2100	to	2299	262 337 9000	to	9099
<b>240 593 1879</b>	<b>to</b>	<b>1899</b>	257 154 8800	to	8899	261 426 0408	to	0499	262 337 9100	to	9199
242 591 2048	to	2099	257 765 4567	to	4599	262 082 8000	to	8099	262 337 9200	to	9299
242 735 0388	to	0398	257 765 4610	to	4696	262 082 8100	to	8199	262 337 9300	to	9399
242 951 7276	to	7299	257 765 4737	to	4799	262 082 8200	to	8299	262 337 9400	to	9499
243 535 6370	to	6399	257 792 7800	to	7889	262 082 8300	to	8399	262 337 9500	to	9599
244 004 9985	to	9999	257 792 7900	to	7999	262 082 8400	to	8499	262 337 9600	to	9699
244 004 9985	to	9999	257 792 8000	to	8099	262 288 7302	to	7399	262 337 9700	to	9799
244 268 9765	to	9799	257 856 9863	to	9899	262 288 7400	to	7499	262 337 9800	to	9899
244 347 4471	to	4499	258 103 1773	to	1782	262 288 9900	to	9999	262 337 9900	to	9999
249 056 1551	to	1599	258 405 1800	to	1899	262 337 2600	to	2699	262 472 3188	to	3199
249 336 9438	to	9499	258 405 1900	to	1999	262 337 2700	to	2700	262 472 3200	to	3299
249 399 4000	to	4099	258 405 3300	to	3399	262 337 2800	to	2800	262 546 3100	to	3199
249 399 4100	to	4199	258 405 3400	to	3499	262 337 2900	to	2900	262 546 3200	to	3299
249 399 4200	to	4299	258 405 3500	to	3599	262 337 3000	to	3099	262 546 3300	to	3399
249 399 4300	to	4399	258 405 3700	to	3799	262 337 3100	to	3199	262 546 3400	to	3499
249 399 4400	to	4499	258 405 3800	to	3899	262 337 3200	to	3299	262 546 3500	to	3599
249 399 4500	to	4599	258 405 3900	to	3999	262 337 3300	to	3399	262 546 3600	to	3699
249 399 4600	to	4699	258 405 4000	to	4099	262 337 3400	to	3499	262 546 3900	to	3999
249 399 4700	to	4799	258 405 4100	to	4199	262 337 3500	to	3599	262 546 4300	to	4399
249 399 4800	to	4899	258 405 4200	to	4299	262 337 3600	to	3699	262 546 4400	to	4499
249 399 4900	to	4999	258 405 4600	to	4699	262 337 3700	to	3799	262 546 4500	to	4599
<b>250 159 7502</b>	<b>to</b>	<b>7599</b>	258 405 5600	to	5699	262 337 3800	to	3899	262 546 4600	to	4699
250 566 9644	to	9699	258 405 5700	to	5799	262 337 3900	to	3999	262 546 4700	to	4799
250 661 8425	to	8499	258 405 5800	to	5899	262 337 4000	to	4099	262 546 4800	to	4899
251 335 5731	to	5799	258 405 5900	to	5999	262 337 4100	to	4199	262 546 4900	to	4999
251 379 2380	to	2399	258 405 6000	to	6099	262 337 4200	to	4299	262 546 7100	to	7199
252 005 7626	to	7699	258 405 6100	to	6199	262 337 4300	to	4399	262 546 7200	to	7299
252 421 8401	to	8499	258 405 6200	to	6299	262 337 4400	to	4499	262 546 7300	to	7399
252 464 2810	to	2899	258 405 6300	to	6399	262 337 4500	to	4599	262 546 7400	to	7499
252 612 3683	to	3699	258 405 6400	to	6499	262 337 4600	to	4699	262 546 9800	to	9899
252 469 2125	to	2199	258 405 6800	to	6899	262 337 4700	to	4799	262 546 9900	to	9999

262 567 1788	to	1799	389 696 2400	to	2799	410 867 0970	to	0999	435 666 6092	to	6399
263 254 2500	to	2500	389 846 3104	to	3135	411 868 1023	to	1199	436 082 6400	to	6899
263 340 0000	to	0099	389 846 3145	to	3195	411 922 2322	to	2399	436 160 6441	to	6499
263 340 0100	to	0199	389 887 9211	to	9230	412 193 0900	to	0999	437 316 7115	to	7199
263 340 0500	to	0599	389 887 9234	to	9299	412 395 8599	to	8699	437 427 0500	to	3499
263 340 0600	to	0699	<b>390 001 3182</b>	<b>to</b>	<b>3199</b>	412 485 6500	to	6599	439 179 2300	to	2399
263 340 2700	to	2799	390 001 3500	to	3699	412 485 6610	to	6699	439 310 0458	to	0499
263 340 2800	to	2899	390 545 5974	to	5999	412 885 5953	to	5999	<b>440 698 1947</b>	<b>to</b>	<b>1999</b>
263 340 3000	to	3099	391 104 6146	to	6199	414 193 3608	to	3674	440 858 6300	to	6399
264 341 2360	to	2399	391 574 1466	to	1499	414 193 3677	to	3699	440 858 6420	to	7299
264 380 4000	to	4099	391 783 3020	to	3599	414 411 7348	to	7399	441 199 1655	to	1699
264 380 4100	to	4199	391 792 6100	to	6199	414 640 0757	to	0799	443 127 3648	to	3699
264 799 6049	to	6099	392 668 2956	to	2999	414 965 1727	to	1799	443 127 4000	to	4099
264 860 7832	to	7868	392 854 8500	to	8899	417 302 8104	to	8199	443 673 7900	to	7999
265 127 3658	to	3699	393 584 7566	to	7699	417 867 6532	to	6599	443 800 9335	to	9399
265 380 7111	to	7137	393 650 0074	to	0099	417 496 6800	to	6999	444 382 8822	to	8899
265 444 4762	to	4799	393 838 8316	to	8499	417 871 9250	to	9299	444 390 1667	to	1699
265 548 7074	to	7099	393 893 6007	to	6099	417 930 9533	to	9599	444 457 3854	to	3899
266 106 0000	to	2499	394 126 6907	to	6999	418 164 6500	to	6799	<b>450 048 4173</b>	<b>to</b>	<b>4199</b>
266 129 5809	to	5899	394 189 0405	to	0599	418 423 9863	to	9899	450 048 4442	to	4699
266 673 0000	to	2499	394 822 3243	to	3278	418 633 5922	to	5999	450 560 5173	to	5199
266 749 7900	to	7999	394 990 1810	to	1899	418 719 8520	to	8599	450 620 3077	to	3099
266 868 0952	to	0999	395 343 3264	to	3299	418 744 2235	to	2299	450 620 3135	to	3199
266 868 1028	to	1099	395 373 3035	to	3099	418 962 2848	to	2899	450 780 2716	to	2799
266 868 1100	to	1199	395 396 9649	to	9799	419 543 0286	to	0299	450 801 2700	to	2799
266 868 1200	to	1299	395 970 3240	to	3299	419 730 0300	to	0399	451 109 2967	to	2984
267 296 1237	to	1299	397 622 4054	to	4099	<b>420 277 0015</b>	<b>to</b>	<b>0049</b>	451 115 4110	to	4125
267 324 8946	to	8998	397 819 8902	to	8999	420 599 0734	to	0798	451 115 4127	to	4199
268 072 1203	to	1299	398 149 7200	to	7699	420 661 4115	to	4199	451 746 0700	to	0799
<b>271 660 4333</b>	<b>to</b>	<b>4400</b>	399 070 0872	to	0899	420 758 9500	to	9699	452 265 0074	to	0099
273 520 0000	to	9999	399 156 7119	to	7199	420 969 3951	to	3971	452 265 0246	to	0299
273 520 6000	to	8999	399 203 5064	to	5099	420 969 3973	to	3999	452 265 0335	to	0999
273 775 7700	to	7899	399 296 9910	to	9999	421 116 3565	to	3599	452 509 1169	to	1199
273 882 1913	to	1998	399 396 8935	to	8999	421 130 9300	to	9399	452 855 6471	to	6499
274 750 0300	to	0400	399 792 7775	to	7799	421 313 4500	to	4999	452 890 4679	to	4799
274 782 0549	to	0599	399 792 8300	to	8399	421 364 5537	to	5599	452 900 8215	to	8238
279 517 9330	to	9399	<b>400 427 1051</b>	<b>to</b>	<b>1999</b>	421 656 2609	to	2699	453 117 9146	to	9199
279 517 9594	to	9599	401 045 1505	to	1549	421 988 9700	to	9799	453 334 3631	to	3699
279 517 9623	to	9699	401 045 1571	to	1599	422 172 4667	to	4699	453 603 7841	to	7891
<b>282 667 2500</b>	<b>to</b>	<b>4999</b>	401 294 2700	to	2799	422 484 4212	to	4299	453 650 1140	to	1199
<b>302 000 0000</b>	<b>to</b>	<b>9999</b>	401 310 9505	to	9599	422 556 1270	to	1299	453 741 1300	to	1399
<b>349 746 2056</b>	<b>to</b>	<b>2099</b>	401 382 5312	to	5399	422 587 7024	to	7099	454 013 2919	to	2999
<b>350 518 7350</b>	<b>to</b>	<b>7374</b>	402 578 7876	to	7899	422 819 7533	to	7599	454 186 2411	to	2499
<b>360 011 1690</b>	<b>to</b>	<b>1699</b>	403 125 6744	to	6799	422 842 5073	to	5087	454 268 4883	to	4899
360 168 6008	to	6099	403 260 7000	to	7499	422 907 7563	to	7599	454 302 5400	to	5499
360 173 8800	to	8899	403 280 6470	to	6499	424 500 6050	to	6099	454 490 8300	to	8399
360 324 2326	to	2399	403 685 8600	to	8699	424 641 8500	to	8599	454 547 7434	to	7499
362 861 3064	to	3099	404 003 0300	to	0399	424 871 6600	to	6699	454 922 4867	to	4895
<b>373 006 2176</b>	<b>to</b>	<b>2199</b>	404 041 8838	to	8899	425 298 2352	to	2399	455 221 1348	to	1499
374 768 2600	to	2699	404 071 4268	to	4299	425 418 4269	to	4299	455 364 2147	to	2199
375 169 4400	to	4599	404 347 5356	to	5399	425 418 4405	to	4499	455 399 5400	to	5499
375 829 3400	to	3499	404 347 5548	to	5599	426 547 4566	to	4599	455 476 0676	to	0699
375 851 9100	to	9199	404 726 4500	to	4599	427 412 6337	to	6499	455 543 0618	to	0699
376 196 0911	to	0999	404 961 5001	to	5199	427 481 0900	to	0999	456 410 9006	to	9099
378 085 3679	to	3699	405 325 0188	to	0198	428 027 2742	to	2752	456 470 4146	to	4299
378 351 1063	to	1099	406 009 4587	to	4599	429 474 4172	to	4199	456 619 4460	to	4499
379 843 5100	to	5199	406 260 6830	to	6899	429 889 2900	to	2999	457 333 2686	to	2699
<b>380 093 9600</b>	<b>to</b>	<b>9699</b>	406 459 6641	to	6999	<b>430 150 4401</b>	<b>to</b>	<b>4599</b>	457 729 1767	to	1777
380 165 1165	to	1199	406 733 3000	to	3999	430 172 9800	to	9899	457 937 8615	to	8699
381 325 4500	to	4599	407 545 1557	to	1599	430 177 1900	to	2099	458 028 9810	to	9899
381 604 2510	to	2699	407 594 0412	to	0599	430 444 9500	to	9699	458 057 2712	to	2999
381 645 9525	to	9599	407 692 9100	to	9299	430 664 4070	to	4099	458 069 9537	to	9599
383 314 3968	to	3999	407 959 2190	to	2199	432 168 8419	to	8499	458 069 9665	to	9699
383 892 1000	to	1344	408 265 2275	to	2288	432 708 6800	to	6999	458 337 5222	to	5299
383 892 1382	to	1399	408 499 7700	to	7799	432 744 1544	to	1599	458 354 7653	to	7999
384 925 3641	to	3654	408 499 7900	to	7999	432 995 9775	to	9799	458 671 8678	to	8699
385 568 2331	to	2399	408 682 8484	to	8599	433 003 5800	to	5899	458 671 8721	to	8798
385 599 7554	to	7575	408 698 7015	to	7099	433 757 3047	to	3099	458 847 5044	to	5999
385 774 2024	to	2099	409 072 3941	to	3999	433 765 4003	to	4099	459 274 7624	to	7699
386 624 1412	to	1599	<b>410 491 2311</b>	<b>to</b>	<b>2399</b>	434 482 7060	to	7199	459 365 5432	to	5499
386 883 8936	to	8999	410 694 8400	to	8599	434 513 2386	to	2399	459 378 5764	to	5799
387 314 5574	to	5599	410 775 1500	to	1599	434 968 3076	to	3092	459 472 4816	to	4999
387 837 6300	to	6399	410 795 7927	to	7999	435 303 1831	to	1842	<b>460 349 6878</b>	<b>to</b>	<b>6899</b>
388 828 0656	to	0699	410 867 0917	to	0966	435 303 1986	to	1999	460 550 1909	to	1999

460 997 5234	to	5299	481 072 9463	to	9499	504 045 4030	to	4099	609 493 1100	to	1199
461 973 6443	to	6499	481 673 0074	to	0095	504 166 0200	to	0599	609 766 8091	to	8999
462 152 0107	to	0299	482 527 1500	to	1599	504 240 1062	to	1399	609 825 4100	to	4115
462 274 1072	to	1099	482 541 5255	to	5299	504 805 3300	to	3499	609 884 2981	to	2999
462 277 8373	to	8399	482 729 6800	to	6899	505 096 0662	to	0699	609 893 1000	to	1099
462 554 6051	to	6099	483 363 7207	to	7299	505 893 7739	to	7799	<b>610 092 3200</b>	<b>to</b>	<b>3299</b>
463 011 5529	to	5540	483 402 2356	to	2399	505 893 7800	to	7999	610 582 4200	to	4299
463 176 4115	to	4199	483 486 5100	to	5199	506 124 0800	to	0999	611 879 6939	to	6999
463 176 4229	to	4299	483 632 1521	to	1599	506 165 7027	to	0099	612 291 8013	to	8099
463 185 2600	to	2799	483 632 2600	to	2799	506 502 5209	to	5299	612 751 5171	to	5199
463 227 7711	to	7799	483 849 1615	to	1699	506 756 1682	to	1699	612 751 5226	to	5299
463 414 4869	to	4899	484 174 4803	to	5299	506 756 1700	to	1799	612 751 6083	to	6099
463 808 3484	to	3499	484 323 8900	to	9199	506 756 1800	to	1899	612 751 6268	to	6299
463 945 7400	to	7899	484 680 5000	to	5038	506 836 5326	to	5399	612 751 6572	to	6599
464 629 9000	to	9399	484 680 5040	to	5074	508 488 6226	to	6299	612 774 2111	to	2199
464 711 4332	to	4399	484 680 5077	to	5099	508 789 8332	to	8399	612 774 2254	to	2299
465 692 3963	to	3999	485 029 4913	to	4999	508 789 8400	to	8499	612 774 2500	to	2599
465 698 8300	to	8599	486 176 0600	to	0699	509 909 0425	to	0435	614 469 0979	to	0999
465 743 7745	to	7799	486 559 7555	to	7599	<b>510 150 2400</b>	<b>to</b>	<b>2499</b>	614 474 3000	to	3099
466 798 6056	to	6067	486 696 3023	to	3199	510 381 3200	to	3299	614 521 3490	to	3499
467 147 4300	to	4399	488 173 7900	to	7999	510 587 9500	to	9599	614 645 1800	to	1899
468 079 5782	to	5799	488 206 4100	to	4199	510 587 9659	to	9699	614 832 1100	to	2099
469 067 2817	to	2899	488 226 0200	to	0299	510 269 9770	to	9999	615 017 7505	to	7599
469 127 8000	to	8199	488 709 3906	to	3999	511 021 5042	to	5099	617 711 6609	to	6699
469 213 0359	to	0399	488 855 8359	to	8399	511 021 5100	to	5199	617 760 5266	to	5299
469 213 0500	to	0599	489 181 8963	to	8999	511 468 1747	to	1799	617 813 3601	to	3699
469 561 8011	to	8099	489 223 2000	to	2099	511 844 0100	to	0199	618 840 9200	to	9299
469 658 1961	to	1999	489 311 1930	to	1999	511 844 0340	to	0399	619 551 7229	to	7299
469 666 9900	to	9999	489 318 6200	to	6300	512 805 3913	to	3919	619 859 3000	to	3099
469 678 1900	to	1999	489 384 0027	to	0099	513 046 0700	to	0726	<b>620 073 9400</b>	<b>to</b>	<b>9499</b>
469 781 4900	to	4999	489 427 0658	to	0899	513 149 0600	to	0699	621 614 7907	to	7930
469 947 6960	to	6999	489 997 5252	to	5299	513 445 3000	to	3199	621 614 7932	to	7999
<b>470 755 5800</b>	<b>to</b>	<b>5818</b>	<b>490 669 5850</b>	<b>to</b>	<b>6099</b>	513 466 2034	to	2044	621 648 8021	to	8199
471 918 0300	to	0999	490 717 7080	to	7099	513 539 9052	to	9099	621 648 8500	to	8599
471 985 2408	to	2419	490 721 6000	to	6099	513 539 9267	to	9299	621 904 8351	to	8599
472 191 6700	to	6799	490 793 1500	to	2099	513 539 9800	to	9899	621 916 1978	to	1989
472 270 2555	to	2599	490 886 8171	to	8199	513 539 9985	to	9999	622 989 8032	to	8099
472 987 0213	to	0241	490 977 9221	to	9240	513 606 5459	to	5490	623 076 9300	to	9399
472 987 0290	to	0299	491 258 8100	to	9099	513 812 1751	to	1799	623 819 5006	to	5099
473 151 2069	to	2199	491 567 1376	to	1399	514 103 3600	to	3699	623 895 8200	to	8399
473 666 9138	to	9199	492 254 4800	to	4899	514 103 3700	to	3799	623 917 0000	to	0099
473 952 3429	to	3499	492 283 5100	to	5199	514 103 3800	to	3899	623 917 0200	to	0299
474 108 5402	to	5499	492 610 6813	to	6899	<b>600 645 3223</b>	<b>to</b>	<b>3299</b>	624 468 5288	to	5299
474 356 5193	to	5299	493 394 5568	to	5599	601 339 1200	to	1399	624 665 3162	to	3198
474 949 3366	to	3399	493 470 2562	to	2599	601 653 5884	to	5899	625 088 6735	to	6799
475 134 9362	to	9399	493 473 7700	to	7799	601 661 7700	to	7799	625 916 9500	to	9799
475 167 9667	to	9699	493 716 2153	to	2199	601 682 5343	to	5399	625 968 8956	to	8999
475 319 3415	to	3499	494 206 2972	to	2999	601 928 1600	to	1699	627 005 3938	to	3999
475 319 3649	to	3799	494 217 3446	to	3999	602 512 2972	to	2999	627 384 3907	to	4099
475 340 6400	to	6599	494 224 0500	to	0599	602 555 2400	to	2799	627 496 7549	to	7599
475 424 8410	to	8499	495 145 0600	to	0699	602 829 7061	to	7099	627 708 3605	to	3699
475 629 9156	to	9199	496 209 7425	to	7499	603 483 9572	to	9599	627 776 2500	to	2599
475 850 6101	to	6199	496 213 8728	to	8799	603 490 7200	to	7299	628 226 3100	to	3199
475 875 2500	to	2599	496 474 5226	to	5248	603 678 7100	to	7199	628 814 4702	to	4799
476 169 8264	to	8299	497 053 8517	to	8699	603 678 7662	to	7699	628 851 9689	to	9699
476 189 3000	to	3499	497 854 8673	to	8699	603 678 7902	to	7999	629 510 7200	to	7299
476 331 2480	to	2499	498 449 8888	to	8899	603 678 8418	to	8499	629 964 4200	to	4294
477 289 8601	to	8699	498 929 8285	to	8499	603 678 8700	to	9999	<b>630 389 3056</b>	<b>to</b>	<b>3071</b>
477 681 5206	to	5299	498 936 5310	to	5399	604 086 0880	to	0899	630 463 0588	to	0599
478 010 4243	to	4268	499 016 5425	to	5499	604 349 1414	to	1499	631 459 9117	to	9199
478 010 4270	to	4291	499 440 8575	to	8899	604 503 7776	to	7799	631 762 9325	to	9399
478 450 5071	to	5099	499 731 6717	to	6799	605 520 9037	to	9099	632 217 4933	to	4999
478 469 7838	to	7858	<b>500 064 1858</b>	<b>to</b>	<b>1869</b>	605 685 4010	to	4099	632 500 0000	to	640 3999
478 469 7883	to	7899	500 070 5725	to	7799	605 988 6467	to	6499	633 110 4165	to	4199
479 280 9800	to	9899	501 058 0016	to	0026	607 689 7951	to	7960	633 110 4303	to	4499
479 365 9116	to	9176	501 331 0300	to	0399	607 728 1276	to	1299	633 438 6429	to	6599
479 412 9900	to	9999	501 460 0977	to	0999	608 727 7100	to	7199	633 588 7173	to	7182
479 667 6190	to	6199	502 227 7645	to	7699	608 727 7273	to	7599	634 725 0700	to	0799
479 748 9680	to	9699	502 424 0200	to	0499	608 813 9950	to	9999	634 803 3239	to	3299
479 860 7000	to	7199	502 424 0600	to	0699	609 067 5325	to	5399	634 807 2474	to	2499
<b>480 526 2000</b>	<b>to</b>	<b>2099</b>	502 496 6923	to	6999	609 067 5488	to	5499	634 827 5900	to	5999
480 640 6330	to	6399	503 003 2700	to	2899	609 067 5600	to	5699	634 886 3428	to	3499
480 658 0568	to	0599	503 194 5144	to	5153	609 289 6123	to	6199	635 559 3449	to	3499
480 689 5100	to	5199	503 790 9922	to	9948	609 438 4400	to	4499	636 289 6214	to	6299

636 634 8007	to	8042	651 882 2800	to	2899	683 118 2389	to	2399	701 838 2800	to	2899
637 150 1200	to	1299	652 754 6317	to	6399	683 378 2000	to	2099	701 941 0600	to	0699
637 562 5828	to	5899	653 131 4945	to	4999	683 378 2117	to	2299	702 171 1603	to	1699
638 042 1647	to	1699	653 426 3300	to	3399	683 415 1200	to	1499	702 195 5109	to	5199
638 049 4984	to	4999	653 455 4874	to	4899	683 444 8159	to	8199	702 254 9300	to	9399
638 318 1115	to	1199	654 238 0000	to	0399	685 154 7780	to	7789	702 264 7569	to	7599
638 318 1453	to	1499	654 404 3065	to	3092	685 297 7645	to	7699	702 519 0513	to	0524
638 885 0000	to	0299	654 962 2900	to	3199	685 623 5264	to	5299	702 713 1800	to	1809
638 903 4362	to	4373	655 103 5081	to	5199	685 650 9487	to	9499	702 821 5730	to	5799
639 415 1929	to	1999	655 523 2600	to	2999	685 669 4200	to	4299	702 821 5805	to	5899
639 415 2019	to	2099	656 305 2448	to	2499	685 757 8452	to	8499	702 844 6975	to	6994
639 420 6200	to	6299	657 347 4438	to	4999	686 071 2694	to	2799	702 846 6331	to	6399
639 469 3517	to	3799	657 710 8100	to	8999	686 176 3333	to	3354	702 848 3900	to	3999
639 605 2143	to	2199	657 780 0985	to	0999	686 372 3200	to	3299	702 857 7302	to	7499
639 657 8600	to	8799	658 586 1400	to	1499	686 644 5879	to	5899	702 878 0114	to	0199
<b>640 289 7500</b>	<b>to</b>	<b>7599</b>	658 877 8000	to	8199	686 899 1371	to	1399	703 364 1707	to	1799
640 289 7700	to	7999	658 880 8000	to	8199	686 931 7636	to	7699	<b>740 002 7710</b>	<b>to</b>	<b>7719</b>
641 170 4420	to	4499	659 398 7300	to	7399	687 601 0973	to	0999	740 037 6730	to	6800
641 318 3133	to	3199	659 706 8113	to	8199	687 614 6774	to	6799	740 119 2275	to	2284
641 378 6500	to	6999	659 846 7837	to	7899	688 120 9000	to	9999	740 130 6688	to	6698
641 383 8739	to	8799	<b>660 510 4100</b>	<b>to</b>	<b>4199</b>	688 314 3107	to	3191	740 144 2780	to	2795
641 877 3187	to	3299	660 673 0400	to	0599	<b>690 291 1361</b>	<b>to</b>	<b>1371</b>	740 241 9049	to	9099
641 877 3310	to	3399	661 488 5000	to	5099	690 788 2877	to	2899	740 252 9265	to	9294
642 355 8094	to	8199	661 609 9100	to	9199	690 893 5344	to	5399	740 255 1718	to	1799
642 355 8308	to	8999	661 716 9420	to	9499	690 893 5512	to	5599	740 274 2602	to	2619
642 900 0018	to	0099	661 906 6522	to	6599	690 904 1300	to	1599	740 277 0366	to	0392
643 030 6254	to	6299	662 021 8332	to	8399	690 941 6000	to	6199	740 332 7658	to	7671
644 066 0882	to	0899	662 068 0700	to	0899	691 313 6383	to	6399	740 348 6641	to	6658
644 069 0600	to	0699	662 553 0774	to	0799	691 313 6600	to	6699	740 351 4790	to	4799
644 077 7506	to	7699	663 078 7034	to	7099	691 582 8003	to	8099	740 374 7416	to	7499
644 085 8157	to	8199	663 763 5300	to	5399	691 664 1800	to	1999	740 470 2420	to	2443
644 112 9839	to	9899	663 883 7039	to	7499	691 664 2400	to	2499	740 514 0300	to	0499
644 373 9083	to	9099	663 938 9200	to	9299	692 727 9362	to	9399	740 523 7432	to	7449
644 380 1460	to	1499	664 253 8000	to	8499	692 798 1800	to	1899	740 535 1555	to	1580
644 733 4715	to	4799	664 656 3055	to	3099	693 249 0779	to	0799	740 557 3570	to	3579
644 900 9712	to	9799	665 174 6400	to	6499	693 249 0877	to	1699	740 650 4104	to	4140
644 901 0109	to	1299	665 274 8208	to	8299	693 445 0566	to	0999	740 684 0620	to	0800
644 901 1325	to	1399	665 669 5400	to	5499	693 448 8500	to	8999	740 701 6105	to	6114
644 923 6800	to	7799	666 132 8226	to	8299	693 645 9583	to	9599	740 705 9790	to	9799
644 932 4655	to	4699	666 696 2209	to	2299	693 965 4200	to	4299	740 726 6400	to	6500
645 318 7240	to	7499	666 696 2309	to	2399	695 741 2906	to	2999	740 748 8319	to	8329
645 333 1766	to	1799	667 032 9300	to	9399	695 947 8518	to	8599	740 765 3306	to	3399
645 790 8632	to	8699	667 729 5529	to	5599	696 662 8247	to	8299	740 774 8434	to	8499
645 821 0657	to	0699	668 383 8400	to	8699	697 447 8285	to	8296	740 779 4259	to	4299
645 930 7948	to	7999	<b>670 368 3400</b>	<b>to</b>	<b>3499</b>	698 042 4816	to	4899	740 786 1885	to	1899
645 975 0737	to	0762	670 369 7336	to	7399	698 131 2138	to	2157	740 790 5989	to	5999
646 242 6200	to	6299	670 750 7169	to	7199	698 227 0000	to	0099	740 803 4870	to	4879
646 270 7639	to	7799	671 046 6200	to	6399	<b>700 065 2570</b>	<b>to</b>	<b>2599</b>	740 820 4854	to	7836
646 798 4000	to	4999	671 251 5448	to	5499	700 065 4800	to	4899	740 827 7578	to	7594
647 048 7035	to	7099	671 926 5600	to	5799	700 190 3350	to	3359	740 917 7490	to	7499
647 049 2900	to	2999	672 444 2000	to	2999	700 228 6048	to	6099	740 918 5531	to	5549
647 398 8300	to	8399	672 828 3410	to	3499	700 650 0452	to	0499	741 037 8528	to	8551
647 398 8481	to	8499	673 167 5776	to	5799	700 666 1323	to	1349	742 030 6135	to	6149
647 437 3000	to	4999	675 464 3700	to	3799	700 786 9106	to	9142	742 033 2663	to	2674
647 811 2188	to	2199	675 464 4000	to	4199	700 859 0744	to	0758	742 040 3300	to	3309
648 009 6057	to	6099	676 365 5958	to	5999	701 028 6780	to	6899	742 112 8155	to	8199
648 163 5300	to	5499	676 669 1024	to	1099	701 213 3900	to	3999	742 151 5000	to	5014
648 722 5283	to	5299	677 126 6734	to	6799	701 267 2000	to	3999	742 191 4640	to	4649
648 892 3164	to	3199	677 333 9979	to	9999	701 335 7312	to	7399	742 192 5210	to	5224
649 100 3989	to	3999	677 466 1088	to	1099	701 369 2005	to	2050	742 222 9200	to	9210
649 647 0370	to	0399	678 071 4500	to	4799	701 499 2260	to	2299	742 228 9660	to	9669
649 647 0522	to	0599	678 096 7531	to	7599	701 503 2247	to	2299	742 247 6980	to	6989
649 647 5237	to	5399	679 909 2578	to	2599	701 541 2271	to	2299	742 290 0936	to	0950
649 647 9100	to	9299	<b>680 112 9565</b>	<b>to</b>	<b>9599</b>	701 553 6557	to	6599	742 302 7600	to	7699
649 666 7800	to	8299	680 244 0903	to	0999	701 578 7460	to	7469	742 305 3711	to	3799
<b>650 114 7707</b>	<b>to</b>	<b>7719</b>	680 412 6046	to	6099	701 578 7475	to	7499	742 305 3800	to	3899
650 130 3400	to	3599	680 761 6800	to	6899	701 601 3457	to	3499	742 305 3900	to	3999
650 213 0406	to	0499	681 677 0540	to	0699	701 605 5913	to	5999	742 305 4000	to	4099
650 555 1749	to	1799	682 070 1029	to	1099	701 695 3982	to	3999	742 305 4100	to	4199
650 564 1900	to	1999	682 956 6280	to	6299	701 695 4148	to	4199	<b>805 885 8411</b>	<b>to</b>	<b>8499</b>
650 627 4212	to	4299	682 956 6490	to	6599	701 695 4227	to	4299	806 087 1100	to	1499
650 736 2043	to	2099	682 956 6700	to	6799	701 708 1741	to	1799	806 268 9275	to	9299
650 739 1540	to	1699	682 965 1178	to	1199	701 736 3966	to	3999	806 534 3400	to	3477
651 741 4415	to	4499	682 965 1201	to	1299	701 772 0870	to	0899	807 342 3283	to	3399



808 086 7100	to	7199	855 361 3390	to	3399	902 198 9769	to	9799	918 460 0602	to	0699
808 090 3440	to	3499	856 226 0490	to	0499	902 948 1269	to	1299	918 951 7231	to	7299
808 325 5161	to	5699	856 656 5800	to	5999	902 985 0833	to	0899	919 519 2786	to	2799
808 784 8000	to	8299	856 752 0200	to	0299	903 370 6934	to	6999	919 536 0770	to	0799
<b>830 125 0672</b>	<b>to</b>	<b>0699</b>	857 111 1352	to	1399	904 600 6523	to	6599	919 814 3095	to	3199
830 602 5800	to	5999	857 279 3450	to	3499	904 892 0378	to	0399	919 889 5110	to	5134
830 610 3700	to	3799	857 843 4000	to	4099	904 892 0648	to	1299	919 889 5137	to	5176
830 983 3500	to	3599	858 124 7644	to	7699	905 056 2216	to	2299	919 889 5178	to	5199
830 983 3635	to	3699	858 756 3111	to	3299	905 510 6647	to	6799	919 889 5030	to	5070
831 354 1387	to	1399	859 063 8200	to	8699	905 510 6900	to	7099	919 889 5090	to	5099
831 815 8240	to	8299	859 190 0600	to	0644	905 794 0000	to	0199	919 915 2774	to	2787
832 525 3810	to	3899	859 437 5538	to	5599	905 794 0288	to	0299	<b>920 155 4662</b>	<b>to</b>	<b>4687</b>
833 159 1884	to	1899	859 811 2888	to	2899	905 873 6900	to	6999	920 309 9039	to	9199
833 456 2567	to	2599	859 855 8873	to	8999	905 873 7100	to	7299	920 771 5321	to	5399
833 566 3015	to	3071	<b>860 240 8520</b>	<b>to</b>	<b>8599</b>	905 882 8900	to	8999	920 857 5500	to	8899
834 130 5200	to	5299	860 275 3900	to	3999	905 889 7100	to	7199	920 864 3480	to	3499
834 316 5444	to	5499	860 518 9629	to	9699	906 158 1508	to	1599	920 963 4567	to	4599
834 354 8747	to	8766	860 600 0021	to	0999	906 558 8812	to	8899	921 333 7400	to	7499
834 354 8824	to	8838	861 158 2350	to	2599	906 892 2214	to	2299	921 477 3762	to	3799
835 269 5700	to	5799	861 367 5400	to	5499	907 725 8500	to	8599	922 278 1048	to	1399
835 496 7303	to	7399	861 637 6010	to	6099	907 815 0216	to	0257	922 280 2019	to	2099
835 539 5200	to	5999	861 979 7292	to	7499	908 622 4225	to	4235	922 280 2233	to	2299
835 813 3015	to	3099	862 216 6100	to	6199	908 936 9254	to	9299	922 773 0459	to	0499
837 672 8967	to	8999	862 263 9213	to	9299	909 066 4494	to	7499	923 032 7000	to	7399
837 784 3282	to	3299	862 271 0800	to	0999	909 067 7400	to	7499	923 045 3630	to	3699
838 176 8377	to	8399	862 271 5000	to	5099	909 100 1787	to	1799	923 484 3600	to	3699
838 518 1257	to	1299	863 871 5138	to	5199	909 100 1900	to	2099	923 493 9403	to	9599
839 718 8257	to	8299	863 949 5300	to	5399	909 355 0422	to	0499	923 493 9681	to	9699
<b>840 323 0600</b>	<b>to</b>	<b>0699</b>	864 088 8200	to	8299	909 568 8900	to	9099	923 604 4424	to	4499
840 875 6235	to	6299	864 426 3972	to	3999	909 568 9300	to	9499	923 810 7800	to	8299
840 910 0900	to	0999	864 520 6117	to	6136	909 725 7307	to	7399	924 252 1200	to	1299
841 349 5000	to	5099	865 151 0526	to	0599	909 833 0947	to	0999	924 252 1400	to	1499
841 805 7747	to	7899	865 500 4034	to	4099	<b>910 219 8631</b>	<b>to</b>	<b>8699</b>	924 533 0711	to	0799
841 805 7944	to	8099	865 883 6082	to	6099	910 265 1100	to	1199	924 533 2343	to	2399
842 226 0685	to	0695	866 004 3000	to	3999	910 471 7273	to	7299	924 533 2428	to	2499
842 685 4600	to	4699	866 442 4100	to	4899	910 536 2505	to	2599	924 685 1957	to	1999
842 685 4742	to	4999	867 366 9108	to	9118	910 958 7499	to	7599	924 946 6300	to	6699
842 860 0300	to	0399	867 633 7403	to	7499	911 140 1000	to	2199	925 333 5900	to	6099
842 898 5582	to	5599	867 737 5623	to	5699	911 245 2545	to	2599	925 336 2300	to	2399
843 062 7100	to	7199	868 169 4529	to	4599	911 268 9077	to	9099	926 432 5907	to	5999
843 077 6288	to	6299	868 173 8400	to	8599	911 400 8948	to	8999	926 436 3600	to	3699
843 077 6378	to	6399	868 514 9000	to	9099	911 508 1620	to	1799	927 765 6257	to	6299
843 758 5769	to	5778	868 566 9200	to	9299	911 509 9310	to	9399	928 197 8100	to	8199
843 786 2554	to	2699	869 200 0000	to	9999	911 523 3000	to	3999	928 197 8283	to	8299
845 656 8165	to	8199	869 387 1150	to	1199	912 057 9922	to	9999	928 856 2059	to	2068
845 727 2100	to	2199	869 505 3500	to	3599	912 882 0563	to	0899	<b>930 078 5800</b>	<b>to</b>	<b>5899</b>
845 746 2618	to	2635	869 523 7033	to	7099	913 605 2218	to	2299	930 219 1722	to	1799
846 390 7531	to	7599	869 566 6150	to	6167	913 709 2429	to	2499	930 335 7810	to	7819
846 918 0572	to	0599	869 776 8785	to	8786	913 818 3501	to	3999	931 097 9259	to	9299
847 237 7690	to	7699	869 800 0000	to	9999	914 063 4300	to	4399	931 156 1502	to	1579
847 284 2481	to	2499	<b>870 054 4814</b>	<b>to</b>	<b>4899</b>	914 346 7621	to	7644	931 156 1600	to	1625
847 374 7055	to	7065	870 491 4812	to	4849	914 453 1366	to	1399	931 156 1671	to	1699
847 374 7055	to	7065	870 536 5820	to	5829	914 529 6185	to	6299	932 506 6400	to	6599
847 636 5304	to	5399	870 541 7167	to	7239	914 896 4658	to	4699	932 732 1796	to	1799
847 700 5447	to	5499	870 575 8155	to	8999	915 187 8774	to	8779	932 827 9026	to	9099
847 723 7500	to	7599	870 589 0485	to	0494	915 300 2783	to	2799	932 957 2300	to	2399
849 485 3427	to	3499	870 691 7060	to	7099	915 546 6822	to	6999	933 060 6160	to	6189
849 520 9850	to	9899	872 028 4850	to	4899	915 646 5183	to	5199	933 387 2541	to	2561
849 608 1357	to	1399	872 029 9306	to	9399	915 671 3963	to	3980	933 760 3609	to	4199
849 792 2600	to	2699	872 078 3709	to	3799	915 671 3982	to	3999	933 894 0928	to	0999
<b>850 546 1862</b>	<b>to</b>	<b>1899</b>	872 100 0445	to	0459	915 675 2217	to	2299	934 018 2729	to	2741
851 143 6826	to	6844	<b>900 556 4178</b>	<b>to</b>	<b>4199</b>	916 440 3377	to	3399	934 180 0300	to	0399
851 209 9880	to	9899	900 845 0044	to	0099	916 670 6352	to	6399	934 236 3954	to	3999
851 928 9221	to	9299	900 936 0217	to	0299	916 682 5300	to	5399	934 622 8717	to	8999
852 589 6560	to	6599	900 936 0435	to	0499	916 694 1414	to	1499	935 216 0312	to	0399
853 049 3646	to	3699	901 058 5255	to	5280	916 703 0802	to	0821	935 843 2202	to	2247
854 304 4089	to	4999	901 273 1082	to	1099	917 089 0709	to	0799	936 024 8889	to	8899
854 529 2200	to	2299	901 287 5143	to	5199	917 089 0842	to	0899	936 339 4455	to	4499
854 532 0000	to	2999	901 291 2789	to	2799	917 216 2928	to	2999			
855 001 6204	to	6249	901 525 7122	to	7199	917 370 6300	to	6499			
855 319 9364	to	9399	902 089 1253	to	1299	917 486 4900	to	4999			

## Missing, Lost, or Stolen Canadian Money Order Forms

### Do Not Cash — Upon Receipt, Notify Local Postal Inspectors

Provide this listing to all Postal Service™ employees responsible for accepting and cashing postal money orders. Destroy all interim notices when the numbers listed appear in the *Postal Bulletin*. The new money order serial

numbers consist of the first 9 digits. The tenth digit is a check digit only.

Do not cash outdated money orders **104 151 601 to 692 600 000**. Advise holders to send invalid money orders to Canada Post Corporation, Ottawa, Canada K1A 0B1. Check for altered dollar amounts by holding money orders to the light.

719 869 731	to	9 760	728 382 331	to	2 480	734 797 201	to	7 320	741 764 431	to	4 520
<b>720 227 871</b>	<b>to</b>	<b>7 930</b>	728 702 338	to	2 400	734 939 611	to	9 640	742 178 834	to	8 880
720 227 949	to	7 960	728 915 371	to	5 850	734 950 111	to	0 170	742 325 500	to	5 520
720 368 543	to	8 570	728 953 141	to	3 410	735 120 331	to	0 840	742 325 668	to	5 700
720 392 151	to	2 570	728 954 280	to	4 310	735 283 008	to	3 020	742 408 771	to	8 830
720 556 491	to	6 640	729 169 081	to	9 140	735 293 131	to	3 220	742 512 120	to	2 150
720 558 621	to	8 650	729 363 841	to	3 870	735 635 010	to	5 040	742 684 849	to	4 890
720 575 361	to	5 570	729 682 891	to	3 190	735 783 961	to	3 990	742 839 553	to	9 630
720 590 152	to	0 179	729 838 940	to	9 070	735 803 401	to	3 430	742 913 668	to	3 700
721 638 331	to	9 170	729 839 101	to	9 130	736 005 420	to	5 440	742 917 287	to	7 296
721 815 391	to	5 420	<b>730 077 683</b>	<b>to</b>	<b>7 840</b>	736 366 021	to	6 110	742 921 891	to	1 980
721 969 713	to	9 740	730 109 847	to	9 880	736 624 456	to	4 500	742 983 631	to	3 810
722 072 137	to	2 160	730 373 761	to	3 850	736 670 851	to	1 060	743 020 021	to	0 170
722 378 265	to	8 280	730 501 951	to	2 130	736 767 061	to	7 090	743 206 491	to	6 500
722 413 990	to	4 004	730 519 379	to	9 470	736 767 093	to	7 120	743 235 992	to	6 050
722 764 948	to	4 980	730 569 278	to	9 360	736 982 191	to	2 370	743 940 631	to	0 900
722 825 840	to	5 889	730 711 711	to	1 740	736 982 551	to	2 730	743 978 011	to	8 070
723 153 841	to	3 850	730 722 991	to	3 230	737 110 141	to	0 170	744 234 751	to	4 780
723 237 616	to	7 630	730 845 970	to	5 990	737 185 501	to	5 710	744 499 591	to	9 680
723 331 081	to	1 110	730 888 291	to	8 320	737 317 321	to	7 350	744 626 901	to	6 910
723 496 443	to	6 470	730 927 591	to	7 680	737 517 781	to	7 840	745 388 794	to	8 910
723 967 291	to	7 320	731 307 914	to	7 930	737 628 181	to	8 210	746 446 806	to	6 820
724 655 196	to	5 340	731 402 431	to	2 460	737 634 258	to	4 270	746 818 351	to	8 410
724 711 441	to	1 500	731 407 232	to	7 320	738 361 971	to	1 980	747 245 266	to	5 280
724 711 538	to	1 560	731 588 301	to	8 340	738 447 601	to	7 660	747 364 813	to	4 830
724 793 221	to	3 250	731 767 273	to	7 320	738 648 355	to	8 450	747 501 434	to	1 450
724 908 109	to	8 120	731 781 061	to	1 120	738 849 811	to	9 900	747 739 891	to	0 070
724 937 461	to	7 670	731 837 821	to	7 910	738 892 270	to	2 290	748 148 649	to	8 760
725 163 118	to	3 151	731 841 377	to	1 450	738 997 259	to	7 380	748 259 960	to	9 970
725 202 735	to	2 750	732 018 481	to	8 600	739 161 451	to	1 540	748 565 162	to	5 280
725 398 591	to	8 800	732 067 972	to	8 370	739 219 381	to	9 440	748 874 988	to	5 030
725 464 591	to	4 920	732 188 649	to	8 670	739 740 151	to	0 180	749 137 381	to	7 410
725 475 321	to	5 330	732 193 460	to	3 470	739 793 491	to	3 520	749 190 192	to	0 210
725 711 057	to	1 070	732 201 241	to	1 390	739 793 527	to	3 550	749 685 421	to	5 450
725 738 581	to	8 730	732 220 431	to	0 440	739 942 621	to	2 650	749 846 791	to	6 850
725 981 311	to	1 430	732 355 201	to	5 380	739 999 231	to	9 320	749 993 131	to	3 580
725 987 835	to	7 880	732 472 320	to	2 560	<b>740 011 517</b>	<b>to</b>	<b>1 530</b>	<b>750 071 587</b>	<b>to</b>	<b>1 610</b>
726 060 811	to	0 900	732 541 605	to	1 620	740 030 701	to	0 970	750 408 167	to	8 183
726 391 970	to	2 520	732 572 221	to	2 490	740 261 740	to	1 820	750 438 421	to	8 501
726 484 771	to	4 800	732 586 479	to	6 710	740 265 811	to	6 290	750 743 911	to	4 030
726 493 351	to	5 300	732 994 037	to	4 080	740 299 111	to	9 170	750 779 118	to	9 400
726 504 031	to	4 063	733 163 449	to	3 460	740 299 231	to	9 260	750 910 981	to	1 010
726 504 070	to	4 090	733 297 171	to	7 290	740 329 266	to	9 320	750 960 841	to	0 900
726 504 331	to	4 390	733 446 631	to	7 110	740 889 081	to	9 090	751 296 211	to	6 240
726 563 701	to	4 060	733 474 665	to	4 770	741 010 421	to	0 530	751 539 121	to	9 180
726 599 371	to	9 460	733 704 482	to	4 570	741 113 041	to	3 370	751 541 311	to	1 790
726 626 356	to	6 370	733 751 041	to	1 130	741 373 891	to	4 340	751 757 641	to	7 700
727 182 271	to	2 510	734 009 101	to	9 130	741 452 369	to	2 490	751 936 951	to	7 010
727 416 181	to	6 240	734 290 759	to	0 770	741 492 991	to	3 140	751 951 861	to	1 890
727 481 431	to	1 460	734 389 273	to	9 290	741 553 460	to	3 470	751 999 021	to	9 110
727 749 241	to	9 780	734 440 031	to	0 111	741 764 431	to	4 520	752 139 516	to	9 570

752 182 892	to	2 950	762 324 931	to	4 960	773 112 031	to	2 060	799 177 626	to	7 650
752 206 861	to	7 100	762 439 261	to	9 290	773 125 387	to	5 410	799 854 751	to	5 200
752 295 241	to	5 600	762 524 158	to	4 220	773 179 320	to	9 410	<b>800 044 320</b>	<b>to</b>	<b>4 410</b>
752 731 351	to	1 410	762 584 872	to	4 970	773 202 989	to	3 140	800 211 901	to	2 440
752 767 441	to	7 470	762 593 431	to	3 460	773 208 991	to	9 290	800 427 530	to	7 540
753 008 941	to	9 030	763 155 160	to	5 180	773 231 311	to	1 340	800 872 741	to	2 830
753 194 311	to	4 370	763 178 631	to	8 660	773 348 739	to	8 940	801 349 801	to	9 830
753 620 378	to	0 400	763 506 001	to	6 060	773 348 739	to	8 940	801 676 681	to	7 100
754 013 917	to	3 940	763 522 141	to	2 470	773 575 891	to	5 950	802 967 821	to	7 940
754 161 061	to	1 120	763 717 694	to	7 800	773 852 971	to	3 030	803 217 601	to	7 780
754 358 445	to	8 610	763 826 461	to	6 520	775 373 449	to	3 460	803 729 731	to	9 850
754 410 451	to	0 660	763 900 460	to	0 471	<b>789 257 191</b>	<b>to</b>	<b>7 250</b>	803 747 402	to	7 520
754 438 393	to	8 410	763 900 479	to	0 530	<b>790 448 020</b>	<b>to</b>	<b>8 460</b>	804 138 181	to	8 420
754 493 109	to	3 130	763 917 271	to	7 750	790 597 485	to	7 530	804 428 224	to	8 250
754 664 182	to	4 220	764 125 801	to	5 860	790 911 883	to	1 900	804 682 411	to	2 710
754 816 377	to	6 470	764 284 525	to	4 560	791 057 441	to	7 550	805 272 525	to	2 540
755 487 421	to	7 600	764 526 241	to	6 330	791 239 081	to	9 290	805 523 445	to	3 460
755 592 901	to	3 140	764 601 421	to	1 600	791 374 483	to	4 500	805 745 704	to	5 730
755 790 020	to	0 030	764 650 231	to	0 470	791 387 971	to	8 030	806 452 907	to	2 980
755 791 730	to	1 800	764 984 371	to	4 850	791 447 521	to	7 850	806 744 781	to	4 850
755 926 951	to	7 070	765 003 667	to	3 680	791 451 151	to	1 240	806 982 181	to	2 300
755 934 332	to	4 510	765 042 517	to	2 540	791 500 009	to	0 470	807 764 791	to	4 910
755 957 701	to	8 000	765 194 728	to	4 970	791 771 431	to	1 490	808 089 931	to	9 960
755 962 981	to	3 280	765 387 365	to	7 450	792 004 293	to	4 320	808 656 423	to	6 450
756 035 371	to	5 490	765 541 801	to	2 100	792 018 379	to	8 420	808 753 771	to	3 800
756 301 257	to	1 290	765 638 461	to	8 970	792 070 621	to	0 740	809 189 001	to	9 010
756 371 565	to	1 580	765 647 101	to	7 190	792 145 211	to	5 230	809 886 879	to	6 930
756 876 031	to	6 120	765 813 781	to	4 029	792 391 381	to	1 620	809 890 489	to	0 500
756 876 151	to	6 240	765 879 314	to	9 390	792 452 779	to	2 790	<b>810 323 734</b>	<b>to</b>	<b>3 760</b>
756 970 129	to	0 140	765 954 001	to	4 030	792 772 728	to	2 770	810 367 116	to	7 140
757 059 613	to	9 630	766 120 286	to	0 320	792 903 511	to	3 990	810 526 351	to	6 500
757 078 540	to	8 560	766 125 716	to	5 750	793 282 518	to	2 533	810 806 911	to	6 940
757 086 209	to	6 240	766 158 824	to	8 840	794 041 831	to	2 040	810 807 211	to	7 240
757 240 591	to	0 650	766 388 433	to	8 460	794 397 709	to	7 780	811 423 021	to	3 110
757 277 371	to	7 700	766 509 421	to	9 660	794 581 741	to	2 040	811 517 221	to	7 239
757 291 591	to	2 730	766 572 901	to	3 020	794 592 122	to	2 150	811 721 101	to	1 130
757 964 251	to	4 280	766 748 500	to	8 521	795 032 251	to	2 340	812 025 721	to	5 900
758 067 001	to	7 090	767 024 341	to	4 370	795 796 291	to	6 350	812 093 073	to	3 130
758 105 221	to	5 250	767 326 471	to	6 590	796 070 139	to	0 160	812 100 821	to	0 840
758 324 941	to	5 000	767 332 561	to	2 950	796 143 151	to	3 630	812 465 251	to	5 610
758 593 628	to	3 650	768 009 841	to	9 960	796 159 725	to	9 740	812 918 341	to	8 670
758 709 038	to	9 060	768 011 489	to	1 520	796 169 306	to	9 340	812 918 701	to	8 760
758 744 101	to	4 160	768 177 980	to	7 990	796 373 406	to	3 430	813 050 491	to	0 520
758 850 883	to	0 900	768 391 081	to	1 170	796 602 961	to	3 050	813 073 171	to	3 200
758 860 951	to	1 550	768 661 569	to	1 650	796 708 441	to	8 500	813 398 476	to	8 550
759 152 851	to	2 880	769 000 051	to	0 080	796 886 281	to	6 430	813 713 971	to	4 000
759 740 941	to	1 090	769 050 841	to	0 900	796 901 701	to	2 000	813 858 121	to	8 150
<b>760 004 596</b>	<b>to</b>	<b>4 610</b>	769 159 081	to	9 178	796 975 466	to	5 590	814 789 330	to	9 349
760 118 191	to	8 250	769 737 496	to	7 510	797 272 917	to	2 950	814 984 656	to	4 680
760 155 001	to	5 090	769 778 491	to	8 730	797 519 441	to	9 460	815 016 020	to	6 030
760 378 002	to	8 020	769 827 331	to	7 450	797 519 731	to	0 240	815 199 410	to	9 420
760 692 722	to	2 749	<b>770 216 071</b>	<b>to</b>	<b>6 100</b>	797 535 181	to	5 330	815 240 491	to	0 520
761 055 460	to	5 480	770 723 281	to	3 400	797 646 151	to	6 180	815 755 591	to	5 620
761 169 781	to	9 810	770 790 451	to	0 480	798 040 053	to	0 080	815 755 622	to	5 650
761 504 941	to	5 120	770 915 150	to	5 490	798 055 813	to	5 830	815 806 381	to	6 680
761 516 836	to	6 910	771 455 551	to	5 610	798 055 891	to	5 950	816 126 834	to	6 870
761 613 588	to	3 600	771 609 661	to	9 690	798 326 371	to	6 520	816 156 721	to	6 780
761 688 631	to	8 690	771 932 551	to	2 580	798 339 167	to	9 210	816 580 903	to	0 920
761 805 199	to	5 240	772 057 224	to	7 440	798 562 411	to	2 440	816 945 571	to	5 600
761 826 106	to	6 120	772 162 660	to	3 070	798 632 461	to	2 490	817 253 011	to	3 280
761 881 171	to	1 560	772 718 615	to	8 640	798 807 151	to	7 510	817 763 881	to	4 060
761 975 641	to	5 670	772 940 140	to	0 160	798 944 761	to	5 030	818 330 562	to	0 610
761 975 886	to	5 895	772 970 886	to	0 940	799 118 616	to	8 640	818 459 641	to	9 670
762 304 144	to	4 170	773 009 419	to	9 430	799 133 191	to	3 220	818 926 273	to	6 320

818 950 351	to	0 380	821 903 731	to	3 910	825 472 171	to	2 200	828 539 316	to	9 340
818 962 492	to	2 530	821 927 841	to	7 850	826 042 898	to	2 920	828 539 341	to	9 370
819 032 341	to	2 730	822 505 801	to	5 830	826 226 644	to	6 670	828 732 331	to	2 390
819 127 054	to	7 080	822 703 442	to	3 470	826 582 951	to	3 430	828 807 781	to	7 840
819 278 540	to	8 670	822 900 991	to	1 020	826 720 201	to	0 230	828 830 952	to	0 963
819 544 681	to	4 740	822 925 951	to	6 100	827 005 671	to	5 830	828 939 781	to	0 050
819 928 441	to	8 650	823 284 931	to	4 990	827 287 861	to	7 950	829 002 721	to	2 870
<b>820 034 406</b>	<b>to</b>	<b>4 430</b>	823 293 031	to	3 210	827 291 502	to	1 520	829 005 301	to	5 540
820 070 761	to	1 540	823 556 011	to	6 100	827 575 381	to	5 470	829 080 241	to	0 330
820 191 342	to	1 360	824 078 341	to	8 370	827 609 085	to	9 100	829 160 986	to	1 000
820 274 856	to	4 880	824 156 325	to	6 340	827 619 811	to	9 840	829 176 841	to	6 930
820 600 171	to	0 230	824 511 252	to	1 270	827 883 511	to	3 600	829 471 561	to	1 590
821 172 241	to	2 360	824 588 281	to	8 370	828 160 441	to	0 530	829 561 065	to	1 080
821 229 661	to	9 720	825 140 397	to	0 460	828 376 201	to	6 260	829 566 481	to	6 510
821 229 743	to	9 780	825 409 651	to	9 680	828 441 602	to	1 630	829 569 931	to	9 960

— Criminal Investigations Group, U.S. Postal Inspection Service, 1-12-23

## Verifying U.S. Postal Service Money Orders

Follow these steps to cash a Postal Service™ money order:

1. Check that the amount does not exceed the legal limit: \$1,000 for domestic, and \$700 for international Postal Service money orders.
2. Check that the proper security features are present:
  - When held to the light, a watermark of Benjamin Franklin is repeated from top to bottom on the left side.
  - When held to the light, a dark line (security thread) runs from top to bottom with the word “USPS” repeated.
  - When there is discoloration around the dollar amounts, this might indicate the amounts were changed.

These appear in Postal Service Notice 299, *U.S. Postal Money Order Reference Card*, or online at [usps.com/shop/money-orders.htm](https://usps.com/shop/money-orders.htm).

3. If the money order seems suspicious, call the U.S. Postal Service Money Order Verification System at 866-459-7822.

Provide this information to local banks and retailers, as they also receive Postal Service money orders for cashing.

— Delivery and Retail  
Customer Service Operations, 1-12-23

## Counterfeit Canadian Money Order Forms

### Do Not Cash

To be posted and used by retail window employees. As directed, destroy previous notices. Destroy all interim notices when the numbers listed appear in the *Postal Bulletin*.

671,819,086	683,594,542	687,262,503
676,612,640	684,683,610	687,262,525
677,891,039	686,619,878	687,262,526
678,282,493	686,619,886	687,287,578
678,916,031	686,619,887	687,287,581
679,552,215	686,794,382	687,287,582
679,694,334	686,794,426	694,063,898
679,751,983	686,794,427	694,063,899
679,800,207	686,794,431	694,063,980
681,130,536	687,262,502	701,321,725
681,844,376		

— Criminal Investigations Group,  
U.S. Postal Inspection Service, 1-12-23

## Toll-Free Number Available to Verify Canadian Money Orders

The Canada Post Corporation has a toll-free number that cashing agents can call to verify the validity of Canadian Postal Money Orders. The number is 800-563-0444.

This toll-free number is printed on the back of the Canadian Postal Money Orders.

— Criminal Investigations Group,  
U.S. Postal Inspection Service, 1-12-23

Celebrate the 50<sup>th</sup> Anniversary of

# Title IX

Civil Rights  
legislation  
with  
USPS  
*Forever*<sup>®</sup>  
Stamps



On Sale  
Nationwide:  
March 3, 2022



## Other Information

### Overseas Military/Diplomatic Mail

Mail addressed to military and diplomatic post offices overseas is subject to certain conditions or restrictions of mailing regarding content, preparation, and handling. The APO/FPO/DPO table outlines these conditions by APO/FPO/DPO ZIP Codes™ through the use of footnoted mailing restrictions codes (see the [Restrictions](#) page following the table).

Acceptance clerks must use the table with the Retail System Software terminal to determine which APO/FPO/DPO ZIP Codes are active and which conditions of mailing apply.

The entries under “Changes” appear in bold in the following APO/FPO/DPO table:

### Changes

APO/FPO/DPO	Action	Effective Date	See Restrictions
APO AE 09117	Open	01/06/2023	A-B-C-C2-F-F3-H-N-R-S-V-Z1
FPO AP 96619	Add C, C2	12/22/2022	B-C-C2-F1-F3-R-S-V

We have eliminated “Not Active” entries from the table below to save space and paper.

### APO/FPO/DPO Table

APO/FPO/DPO	See Restrictions	APO/FPO/DPO	See Restrictions	APO/FPO/DPO	See Restrictions	APO/FPO/DPO	See Restrictions
09002	A-B-C-C2-F-F3-H-N-R-S-V-Z1	09046	B-C-C2-D-E-F-F3-H-M-R-S-U	09126	B-C-C2-F3-H-M-P-R-S-Z1	09178	B-C1-C2-E2-F1-F3-I3-L-M-N-R-S-T-V-X-Z1
09003	B-C-C2-D-E-F-F3-H-M-P-R-S-U	09049	B-C-C2-D-E-F-F3-H-M-R-S-U	09128	B-C-C2-D-E-F-F3-H-M-R-S-U	09179	A-B-C-C1-C2-F-F1-F3-J-L-M-N-R-R1-S-T-V-X-Z1
09004	B-C-C2-D-E-F-F3-H-M-R-S-U	09053	B-C-C2-D-E-F-F3-H-M-R-S-U	09131	B-C-C2-D-E-F-F3-H-M-R-S-U	09180	B-C-C2-D-E-F-F3-H-M-R-S-U
09005	B-C-C2-D-E-F-F3-H-M-P-R-S	09060	B-C-C2-D-E-F-F3-H-M-N-R-S-U-Z1	09135	A-B-C2-F-F3-H-N-R-S-U-V-Z1	09186	B-C-C2-D-E-F-F3-H-M-P-R-S-U
09006	B-C-C2-D-E-F-F3-H-M-R-S-U	09067	B-C-C2-D-E-F-F3-H-M-R-S-U	09136	B-C-C2-D-E-F-F3-H-M-P-R-S-U	09203	A-B-C-C1-C2-F-F1-F3-I3-J-L-M-N-R-R1-T-V-Z1
09008	A-B-C2-F-F3-H-N-R-S-V-Z1	09068	B-C-C2-D-E-F-F3-H-R-S-U-Z1	09138	B-C-C2-D-F-F3-H-M-R-S-U	09204	B-C-F3-M-N-R-S-V-Z1
09009	B-C-C2-D-E-F-F3-H-M-R-S-U-Z1	09069	A-B-C-C2-D-E-F-F3-H-N-R-S-U-V	09140	B-C-C2-D-E-F-F3-H-M-R-S-U	09205	A-B-C-C2-E2-F-F3-M-N-R-S-T-V-X
09010	B-C-C2-D-E-F-F3-H-M-R-S-U2	09079	B-C-C2-D-E-F-F3-H-M-R-S-U	09142	B-C-C2-D-E-F-F3-H-M-R-S-U	09211	B-C-C2-D-E-F-F3-H-M-P-R-S-U
09011	B-C-C2-D-E-F-F3-H-M-R-S	09094	B-C-C2-D-F3-H-M-P-R-S-Z1	09154	B-C-C2-D-E-F-F3-H-M-R-S-U	09213	B-C2-F-F1-F3-H-J-L-M-N-R-R1-T-U-V-Z1
09012	B-C-C2-D-E-F-F3-H-M-R-S-U-Z1	09095	B-C-C2-D-E-F-F3-H-M-R-S-U	09160	B-C-C2-D-F-F1-F3-H-J-L-M-N-R-R1-T-U-V-Z1	09214	B-C-C2-D-E-F-F3-H-M-R-S-U-Z1
09013	B-C-C2-D-E-F-F1-F3-H-M-R-S-U-Z1	09096	B-C-C2-D-E-F-F3-H-M-R-S-U	09170	A-B-C2-F-F1-F3-J-L-M-N-R-R1-S-T-V-X-Z1	09216	B,C,F1,F3,M,N,R,S,V,Z1
09014	B-C-C2-D-E-F-F3-H-M-P-R-S-U	09101	A-B-C-C2-F-F3-H-N-Q-R-S-V-Z1	09171	A-B-C1-C2-E3-F-F1-F3-J-L-M-N-R-R1-S-T-V-X-Z1	09227	B-C-C2-D-E-F-F3-H-M-R-S-U
09015	A-B-C-C1-C2-F-F1-F3-J-L-M-N-R-R1-S-V-Z1	09103	A-B-C-C2-F-F3-H-N-R-S-V-Z1	09172	B-C-C2-D-E-F-F3-H-M-R-S-U	09240	A-B-C1-C2-F-F3-H-N-R-S-V
09016	B-C-C2-D-E-F1-F3-H-M-R-S-U	09104	B-C-C2-D-F3-H-M-R-S-U-Z1	09173	B-C-C2-D-E-F-F3-H-M-R-S-U	09241	A-B-C-C2-F3-N-R-S-U-Z1
09017	A-B-C2-F-F3-H-N-R-S-V-Z1	09107	B-C-C2-D-E-F-F3-H-M-R-S-U	09174	B-C-C2-F-F1-F3-L-N-R-R1-S-T-V-X-Z1	09242	A-B-C1-C2-F-F3-H-N-R-S-V
09018	A-B-C-C2-F-F3-H-N-R-S-V-Z1	09112	B-C-C2-D-E-F-F3-H-M-R-S-U	09175	A-B-C1-C2-E2-F-F1-F3-H1-J-L-M-N-R-R1-S-T-V-W-X-Z1	09250	B-C-C2-D-E-F-F3-H-M-R-S-U
09020	B-C-C2-D-E-F-F3-H-M-R-S-U	09114	B-C-C2-D-E-F-F3-H-M-R-S-U	09177	A-B-C2-F-F1-F3-J-L-M-N-R-R1-S-T-V-X-Z1	09261	B-C-C2-D-E-F-F3-H-M-N-R-S-U-V-Z1
09021	B-C-C2-D-E-F-F3-H-M-R-S-U-Z1	09115	A-B-C2-F-F3-H-N-R-S-V-Z1	09178	A-B-C2-F-F1-F3-J-L-M-N-R-R1-S-T-V-X-Z1	09263	B-C-C2-D-E-F-F3-H-M-R-S-U
09034	B-C-C2-D-E-F-F3-H-M-R-S-U	09116	A-B-C2-F-F3-H-N-R-S-V-Z1	09177	B-C-C2-D-E-F-F3-H-M-R-S-U	09264	B-C-C2-D-E-F-F3-H-M-R-S-U
09044	B-C-C2-D-F-F3-H-R-S-U	<b>09117</b>	<b>A-B-C-C2-F-F3-H-N-R-S-V-Z1</b>				
		09123	B-C-C2-D-E-F-F3-H-M-R-S-U-Z1				

APO/ FPO/ DPO	See Restrictions	APO/ FPO/ DPO	See Restrictions	APO/ FPO/ DPO	See Restrictions	APO/ FPO/ DPO	See Restrictions
09265	B-C-D-F-F1-H-J-L-M-N-R-S-T-U-V-Z1	09309	A-B-C-C1-C2-E2-F-F1-F3-H1-M-N-R-R1-S-V-Z1	09487	A-B-C-C1-C2-E2-F1-F3-I3-L-M-N-R-R1-S-T-V-W-X-Z-Z1	09554	B-C-C2-F-F1-F3-R-R1-S-V
09266	A-B-C2-F3-S-U-R-V-Z1	09310	A-B-C1-C2-E2-F-F1-F3-H1-I3-L-M-N-R-R1-S-T-U4-V-Z-Z1	09488	A-B-C-C1-C2-E2-F3-J-L-M-N-S-T-V-W-X-Z1	09556	B-F-F1-R-R1-V
09276	A-B-F-F3-I3-L-M-N-R-S-T-V-X-Z-Z1	09311	A-B-C1-C2-E2-F-F1-F3-H1-I3-L-M-N-R-R1-S-T-U4-V-Z-Z1	09489	A-B-C-C1-C2-E2-F1-F3-L-M-N-R-R1-S-T-V-W-X-Z1	09564	B-C-C2-F-F1-F3-R-R1-S-V
09277	A-B-E-E1-E2-F1-F3-I3-L-N-R-S-T-V-X-Z-Z1	09312	A-B-C1-C2-E2-F-F1-F3-H1-I3-L-M-N-R-R1-S-T-U4-V-Z-Z1	09490	A-B-C1-C2-E2-F-F1-F3-H1-J-L-M-N-R-R1-S-T-V-X-Z1	09565	B-C-C2-F-F1-F3-R-R1-S-V
09278	A-B-F-F3-I3-L-M-N-R-S-T-V-X-Z-Z1	09315	A-B-C1-E2-F-F3-N-R-R1-S-V-Z1	09491	A-B-C1-C2-E2-F1-F3-H1-J-L-M-N-R-R1-S-T-V-Z1	09566	B-C-C2-E2-E3-F-F1-F3-R-R1-S-V
09279	A-B-E-E1-F-F3-I3-L-M-N-R-S-T-V-X-Z-Z1	09316	A-B-C1-E2-F-F1-F3-H1-I3-M-N-R-R1-S-T-V-Z-Z1	09494	B-C-C1-C2-F3-M-R-S-U-Z1	09567	B-C-C2-E2-E3-F-F1-F3-R-R1-S-V
09280	A-B-C-C1-C2-E-E2-F1-F3-H-I3-L-M-N-R-S-T-V-W-X-Z-Z1	09321	A-B-C1-C2-E2-F-F3-H1-M-N-R-R1-S-V-Z1	09498	B-C1-C2-F-F1-F3-J-L-N-R-R1-T-V-Z1	09568	B-C-C2-F-F1-F3-R-R1-S-V
09281	A-B-C1-C2-E2-E3-F-F1-F3-H-H1-J-L-M-N-R-R1-S-T-V-X-Z1	09330	A-B-C1-C2-D-E-E2-F-F1-F3-H-H1-M-R-R1-S-V-Z1	09501	B-V	09569	B-C-C2-E2-E3-F-F1-F3-R-R1-S-V-Z1
09282	A-B-C1-C2-E2-E3-F-F1-F3-H-H1-J-L-M-N-R-R1-S-T-V-X-Z1	09333	A-B-C-C1-C2-E2-F-F1-F3-H1-I3-M-N-R-R1-S-V-V1-Z-Z1	09502	B-V	09570	B-C-C2-F-F1-F3-R-R1-S-V
09283	A-B-E-E1-F-F3-L-M-N-R-S-T-V-X-Z1	09343	A-B-C1-C2-F-F3-M-N-R-R1-S-V-Z1	09503	B-F-F1-R-R1-V	09573	B-C-C2-E2-E3-F-F1-F3-R-R1-S-V-Z1
09284	A-B-C-C2-F-F3-I3-L-M-N-R-S-T-V-X-Z-Z1	09348	A-B-C1-E2-F-F1-F3-H1-I3-M-N-R-R1-S-T-V-Z-Z1	09504	B-V	09574	B-F-F1-R-R1-V
09285	A-B-C-E-E-1-F1-F3-H-I3-L-M-N-R-S-T-V-X-Z-Z1	09357	A-B-C1-E2-F-F3-H1-M-R-V-Z1	09505	B-V	09575	B-C-C2-F-F1-F3-R-R1-S-V
09287	B-C2-E1-F1-F3-J-L-N-R-S-T-V-X-Z1	09365	A-B-C-C1-E2-F-F3-H1-M-N-R-V-Z1	09506	B-V	09576	B-C-C2-F-F1-F3-R-R1-S-V
09288	A-B-C-C1-C2-E2-F1-F3-H-H1-J-L-M-N-R-R1-S-T-V-X-Z1	09366	A-B-C-C1-E2-F-F1-F3-H-H1-M-R-R1-S-V-Z1	09507	B-V	09577	B-C-C2-F-F1-F3-R-R1-S-V
09289	B-E2-F1-F3-H1-J-L-M-N-R-R1-S-T-U2-V-X-Z1	09401	B-C-C1-C2-F3-M-R-S-U-Z1	09508	B-C-C2-F-F3-R-R1-S-V	09578	B-C-C2-F-F1-F3-R-R1-S-V
09290	A-B-F1-F3-J-L-M-N-R-S-T-U2-V-X-Z1	09403	B-C-C1-C2-F3-M-R-S-U-Z1	09509	B-C-C2-F-F3-R-R1-S-V	09579	B-C-C2-F-F1-F3-R-R1-S-V
09291	B-C-C1-C2-E2-F1-F3-H1-L-N-R-R1-S-T-V-X-Z1	09410	C-C2-F-F1-F3-N-R-S-U2	09510	B-C-C2-F-F3-R-R1-S-V	09581	B-C-C2-F-F1-F3-R-R1-S-V
09292	A-B-C-C2-E-E2-E3-F1-F3-H-H1-J-L-M-N-R-R1-S-T-V-X-Z1	09421	B-C-C1-C2-F3-M-R-S-U-Z1	09511	B-C-C2-F-F3-R-R1-S-V	09582	B-C-C2-F-F1-F3-R-R1-S-V
09293	A-B-C-C1-C2-E-E2-F1-F3-I3-L-M-N-R-S-T-V-X-Z-Z1	09447	B-C-C1-C2-F3-M-R-S-U-V-Z1	09512	B-C-C2-F-F1-F3-R-R1-S-V	09583	B-C-C2-F-F1-F3-R-R1-S-V
09294	B-C-C1-C2-E2-F1-F3-H1-L-N-R-R1-S-T-V-X-Z1	09454	B-C-C1-C2-F3-M-R-S-U-V-Z1	09513	B-C-C2-F-F1-F3-R-R1-S-V	09586	B-C-C2-F-F1-F3-R-R1-S-V
09295	B-C-C1-C2-E2-F1-F3-H1-J-L-M-N-R-R1-S-T-V-X-Z1	09456	B-C-C1-C2-F3-M-N-R-S-U-V-Z1	09514	B-C-C2-F-F1-F3-R-R1-V	09587	B-C-C2-F-F1-F3-R-R1-S-V
09301	A-B-C1-C2-E2-F-F1-F3-H1-I3-L-M-N-R-R1-S-T-U4-V-Z-Z1	09459	B-C-C1-C2-F3-M-R-S-U-Z1	09516	B-C-C2-F-F1-F3-R-R1-S-V	09588	B-C-C2-F-F1-F3-R-R1-S-V
09304	A-B-C-C1-C2-F-F1-F3-H-M-N-R-S-V-Z-Z1	09461	B-C-C1-C2-F3-M-P-R-S-U-Z1	09517	B-C-C2-F-F1-F3-R-R1-S-V	09589	B-F-F1-F3-R-S-V
09305	A-B-C1-E2-F-F1-F3-H1-I3-M-N-R-R1-S-T-V-Z-Z1	09463	B-C-C1-C2-F3-M-R-S-U-Z1	09520	B-F-F1-F3-R-R1-S-V	09590	B-C-C2-F-F1-F3-R-R1-S-V
09306	A-B-C1-E2-F-F1-F3-H1-R-R1-S-U2-V-Z1	09464	B-C-C1-C2-F3-R-S-U-Z1	09522	B-F-F1-F3-R-S-V	09591	B-C-C2-F-F1-F3-R-R1-S-V
09307	B-C-C2-F-F3-N-R-R1-S-Z1	09467	B-E-E1-F-F3-J-L-M-N-R-S-T-V-X-Z1	09523	B-C-C2-F-F1-F3-R-R1-S-V	09592	B-C-C2-F-F1-F3-R-R1-S-V
		09468	B-C-C1-C2-F3-M-R-S-U-Z1	09524	B-C-C2-F-F1-F3-R-R1-S-V	09593	B-F-F1-F3-R-S-V
		09469	B-C-C1-C2-F3-R-S-U-Z1	09532	B-C-C2-F-F1-F3-R-R1-S-V	09594	B-C-C1-C2-F-F1-F3-R-R1-S-V
		09470	B-C-C1-C2-F3-M-R-S-U-Z1	09533	B-V	09595	B-C-C2-F-F1-F3-I3-J-R-R1-S-V-V1-Z1
				09534	B-F-F1-F3-R-R1-S-V	09596	B-F-F1-R-R1-V
				09541	A-B-C-F-F3-M-N-S-V-Z1	09599	B-F-F1-R-R1-V
				09542	A-B-C-F-F3-M-N-S-V-Z1	09600	B-C-C2-F-F1-F3-R-S-U-Z1
				09543	A-B-C-F-F3-M-N-S-V-Z1	09602	B-C-C2-F-F1-F3-N-R-S-U-V
				09544	A-B-C-F-F3-M-N-S-V-Z1	09603	B-C-C2-F-F1-F3-R-S-U-V-Z1
				09545	A-B-C-F-F3-M-N-S-V-Z1	09604	B-C-C2-F-F1-F3-P-R-S-U-V-Z1
				09550	B-C-C2-F-F1-F3-R-R1-S-V	09605	B-C-C2-D-F-F3-H-M-R-S-U-V

APO/ FPO/ DPO	See Restrictions	APO/ FPO/ DPO	See Restrictions	APO/ FPO/ DPO	See Restrictions	APO/ FPO/ DPO	See Restrictions
09606	B-C-C2-D-F-F3-H-M-R-S-U-V	09711	A-B-C-C2-E2-F-F1-F3-M-N-R-S-T-V-X	09749	A-B-C2-F-F3-H-N-R-S-U-V-Z1	09816	A-B-C1-C2-E2-E3-F1-F3-J-L-N-R-R1-T-V-Z1
09608	B-C-F-F3-N-R-S-U-V-Z1	09712	A-B-C2-F-F3-H-R-S-U-V-Z1	09750	A-B-C1-C2-F-F1-F3-J-L-M-N-R-R1-T-V-Z1	09817	A-B-C1-C2-E2-E3-F1-F3-H-H1-J-L-M-N-R-R1-T-V-Z1
09609	B-C-C2-F-F3-N-R-S-U-V-Z1	09714	B-C-C1-C2-F-F3-M-R-R1-S-U	09751	B-C-C2-D-E-F-F3-H-M-R-S-U	09818	A-B-C-C2-F-F3-M-R-S-V-Z1
09610	B-C-C2-F-F1-F3-M-R-S-U-V-Z1	09715	B-F-F1-J-L-M-N-R-T-V-Z1	09752	B-C-C2-D-F-F3-H-R-S-U	09819	A-B-C-C1-C2-E2-F1-F3-H-H1-M-R-R1-S-V-Z1
09613	B-C-C2-F-F3-N-R-S-U-V	09716	B-C-C2-F-F1-F3-J-L-M-N-R-R1-T-V-Z1	09753	A-B-C-C1-C2-D-E-F1-F3-H-M-N-R-S-V-W-Z1	09820	A-B-C2-F-F1-F3-H-H1-J-L-M-N-R-R1-T-V-Z1
09614	A-B-C1-C2-E2-F-F1-F3-H1-J-L-M-N-R-R1-T-V-W-Z1	09717	A-B-C-C2-F3-M-R-S-V-W-Z1	09754	A-B-C-C2-F-F3-H-N-R-S-V-Z1	09821	A-B-C-C2-F-F3-N-R-S-V-Z1
09618	B-C-C2-F-F3-R-S-U-Z1	09718	B-F-F1-J-L-M-N-R-T-U-V-Z1	09755	A-B-C-C1-C2-D-F-F1-F3-J-L-M-N-Q-R-R1-S-T-V-Z1	09822	A-B-C-C2-F-F3-M-R-S-V-Z1
09620	B-C-C2-F-F3-R-S-U-V-Z1	09719	B-C-C2-D-F3-M-R-S-U-V-Z1	09759	A-B-C-C1-C2-E2-F-F1-F3-J-L-N-R-R1-T-V-Z1	09823	A-B-C1-C2-F-F1-F3-J-L-M-N-R-R1-T-V-Z1
09621	B-C-F-F3-R-U-Z1	09720	B-C2-F3-M-R-S-U-V-Z1	09761	B-C2-F-F1-F3-M-R-R1-S-V-Z1	09824	A-B-C-C2-F-F3-M-R-S-V-Z1
09622	B-C-C2-F-F3-R-S-U-Z1	09722	A-B-C-C2-F-F3-H-N-R-S-V-Z1	09762	A-B-C2-E3-F-F1-F3-J-L-N-R-R1-T-V-Z1	09825	A-B-C1-C2-F-F1-F3-J-L-M-N-R-R1-T-V-Z1
09623	B-C-C2-F-F3-R-S-U-V-Z1	09723	B-C2-F-F1-F3-J-L-M-N-R-R1-T-V-Z1	09769	A-B-C-C1-C2-F-F1-F3-J-L-M-N-R-R1-T-V-Z1	09826	A-B-C1-C2-E1-E2-E3-F-F1-F3-J-L-M-N-R-R1-T-V-W-Z1
09624	B-C-C2-F-F1-F3-I3-L-N-R-R1-T-U-V-Z1	09724	B-C-C1-C2-F-F3-M-R-R1-S-U	09777	A-B-C-C1-C2-E1-F-F1-F3-J-L-M-N-R-R1-T-V-Z1	09827	A-B-F-F1-J-L-M-N-R-T-V-Z1
09625	B-C-C2-F-F3-N-R-S-U-Z1	09725	A-B-C2-F-F3-H-N-Q-R-S-V-V1-Z1	09780	A-B-C2-F-F3-H-N-R-S-V	09828	A-B-C1-C2-F-F1-F3-I3-L-N-R-R1-T-V-Z1
09627	B-C-C2-F-F3-R-S-U-V-Z1	09726	B-F-F1-J-L-M-N-R-T-U-V-Z1	09801	A-B-C1-E2-F-F3-H1-M-N-R-R1-S-V-Z1	09829	B-C-N-R-V-Z1
09630	B-C-C2-F-F3-R-S-U-V	09727	A-B-C1-C2-F-F1-F3-J-L-M-N-R-R1-T-V-Z1	09802	A-B-C-C2-D-F-F1-F3-H-H1-I3-L-M-N-R-R1-S-T-V-W-Z1	09830	B-C-F-F1-F3-J-L-M-N-R-R1-S-T-V-Z1
09633	B-C-C2-D-F-F3-M-R-S-U-U1-U2-U3-V-Z1	09728	A-B-C-C1-C2-F-F1-F3-J-L-N-R-R1-T-V-Z1	09803	A-B-C-C2-E-E2-E3-F1-F3-H-H1-J-M-N-R-R1-S-U-V-Z1	09831	B-C1-C2-F-F1-F3-J-L-N-R-R1-T-V-Z1
09634	A-B-C2-F-F3-M-N-R-S-V	09729	B-C-C2-F-F3-N-R-R1-S-U-V-Z1	09804	A-B-C-C2-F-F1-F3-M-N-R-S-V-Z1	09832	A-B-C-C1-C2-E2-E3-F1-F3-H-H1-J-M-N-R-R1-S-V-Z1
09636	B-C-C2-F-F3-R-S-U-V-Z1	09730	A-B-C1-C2-F-F1-F3-J-L-M-N-R-R1-T-V-Z1	09805	B-C-C2-E2-E3-F-F1-F3-R-R1-S-Z1	09833	B-C-C2-E2-E3-F-F1-F3-R-R1-S-U-Z1
09642	B-C2-F-F1-F3-J-L-M-N-R-T-U-V	09731	A-B-C1-C2-F-F1-F3-J-L-M-N-R-R1-T-V-Z1	09807	A-B-C1-C2-E2-F-F1-F3-H1-I3-M-N-R-R1-S-T-V-Z1	09834	B-C-C2-E2-E3-F-F1-F3-R-R1-S-U-Z1
09643	B-C-C2-F3-M-R-S-U-V-Z1	09732	B-F-F3-N-S-V-Z1	09808	A-B-C1-C2-E2-F-F1-F3-H-H1-J-L-N-R-R1-T-V-Z1	09836	A-B-C1-C2-F-F1-F3-J-L-M-N-R-R1-V-Z1
09645	B-C-C1-E1-E2-F-F1-F3-M-R-S-U-X-Z1	09733	B-F-F3-N-R-S-V-Z1	09811	A-B-C-C2-E-E2-E3-F1-F3-H-H1-J-M-N-R-R1-S-U-V-Z1	09837	B-E2-E3-F1-F3-R-S-V-Z1
09647	B-C2-F1-F3-M-N-R-S-U-Z1	09734	A-B-C-C1-C2-F-F1-F3-I3-J-L-M-N-R-R1-T-V-Z1	09812	B-E2-E3-F-F1-I-J-L-N-R-T-U-V-Z1	09838	B-C-C2-E2-E3-F-F1-F3-R-S-U-Z1
09648	B-C2-F3-N-R-S-U-V-Z1	09735	B-F3-N-R-S-V-Z1	09813	A-B-C1-C2-E2-E3-F-F1-F3-J-L-N-R-R1-T-V-Z1	09842	A-B-C1-C2-F-F1-F3-J-L-N-R-R1-T-V-Z1
09649	B-C2-F3-N-R-S-U-Z1	09736	A-B-C1-F-F1-F3-J-L-M-N-R-R1-T-V-Z1	09814	B-C2-E2-E3-F-F1-F3-I3-J-L-N-R-R1-T-V-Z1	09844	A-B-C1-C2-F-F1-F3-J-L-M-N-R-R1-T-V-Z1
09701	A-B-C1-C2-F-F1-F3-J-L-M-N-R-R1-T-V-Z1	09737	A-B-C1-C2-F-F1-F3-I3-J-L-M-N-R-R1-T-V-W-Y-Z1	09815	A-B-C-C2-E-E2-E3-F1-F3-H-H1-J-M-N-R-R1-S-U-V-Z1	09845	A-B-C1-C2-E3-F-F1-F3-J-L-M-N-R-R1-T-V-Z1
09702	B-C-C2-F-F1-M-R-R1-S-U	09738	A-B-C1-C2-F-F1-F3-J-L-M-N-R-R1-T-V-Z1			09846	A-B-C1-C2-F-F1-F3-J-L-N-R-R1-T-V-Z1
09704	B-C-F-F1-F3-R-R1-S-U2-V	09739	A-B-C1-C2-F-F1-F3-J-L-M-N-R-R1-T-V-Z1			09847	B-C-C2-F-F1-F3-J-L-M-N-R-R1-S-T-V-Z1
09705	B-C-C1-C2-F1-F3-M-R-R1-S-U	09741	A-B-C1-C2-E2-F-F1-F3-H1-J-L-M-N-R-R1-T-V-W-Y-Z1			09848	A-B-C2-F-F3-M-R-S-V-Z1
09706	B-C-C2-F3-M-N-R-S-U-V-Z1	09742	A-B-C2-F-F1-F3-J-L-M-N-R-S-T-V-Z1			09853	B-C1-C2-E2-F-F1-F3-H1-N-R-R1-S-U2-V-Z1
09707	B-C2-F-F1-F3-J-L-M-N-R-R1-T-V-Z1	09743	A-B-C-C2-F-F3-H-N-R-S-V-Z1			09854	A-B-C1-C2-F-F1-F3-J-L-N-R-R1-S-T-V-Z1
09708	B-C-C1-C2-F-F3-M-R-R1-S-U	09744	A-B-C1-C2-F-F1-F3-J-L-M-N-R-R1-T-V-Z1				
09709	B-C1-C2-E2-F-F1-F3-H-H1-J-L-N-R-R1-T-V-Z1	09745	A-B-C2-F-F1-F3-M-N-R-R1-S-V-Z1				
09710	B-C-C1-F-F1-J-L-M-N-R-R1-T-U-V-Z1	09748	A-B-C1-C2-F-F1-F3-J-L-M-N-R-R1-T-V-Z1				



APO/ FPO/ DPO	See Restrictions	APO/ FPO/ DPO	See Restrictions	APO/ FPO/ DPO	See Restrictions	APO/ FPO/ DPO	See Restrictions
09855	A-B-C-C1-C2-E2-F-F1-F3-H1-M-R-R1-S-U2-V-Z1	09975	B-F1-F3-I3-L-M-N-R-S-T-U2-V-X-Z-Z1	34037	B-C-C1-C2-F-F1-F3-H-J-L-M-N-R-R1-T-V-Z1	96203	A-B-F-F1-F3-M-R-S-U
09857	A-B-C2-E2-F-F1-F3-13-L-M-N-R-R1-S-T-V-Z-Z1	09976	B-F1-F3-J-L-M-N-R-S-T-U2-V-X-Z1	34039	B-C1-C2-F-F1-J-L-M-N-T-V-Z1	96204	A-B-F-F1-F3-M-R-S-U
09858	A-B-C-C1-C2-E2-E3-F1-F3-H-H1-J-M-N-R-R1-S-U-V-Z1	09977	B-F1-F3-J-L-M-N-R-S-T-U2-V-X-Z1	34041	B-C1-C2-F-F1-F3-J-L-M-N-R-R1-T-V-Z1	96205	A-B-C-C2-F-F1-F3-M-R-S-U
09859	B-C-C1-C2-E2-E3-F-F1-F3-H1-R-R1-S-U-Z1	09978	B-C-C2-D-E1-F-F1-F3-H-H1-M-N-R-R1-S-T-X-Z1	34042	A-B-C-F-F1-F3-M-N-R-S-U-V-W-Z1	96206	A-B-C-C2-F-F1-F3-M-R-S-U
09860	A-B-C2-F-F1-F3-J-L-M-N-R-R1-S-T-V-Z1	09980	B-C-C1-C2-F1-F3-J-L-M-N-R-R1-S-T-V-X-Z1	34050	B-V	96207	A-B-F-F1-F3-M-R-S-U-V
09862	A-B-C-C2-F-F1-F3-I3-L-M-N-R-R1-S-T-V-X-Z-Z1	09981	B-C-C1-C2-F1-F3-J-L-M-N-R-R1-S-T-V-X-Z1	34051	B-V	96208	A-B-F-F1-F3-M-R-S-U
09864	A-B-C-C1-C2-E2-F1-F3-L-M-N-R-R1-S-T-V-W-Z1	09982	B-C-C1-C2-F1-F3-J-L-M-N-R-R1-S-T-V-X-Z1	34052	B-V	96209	A-B-C1-C2-F-F1-J-L-M-N-T-U-V-Z1
09867	A-B-C-C1-C2-E2-F1-F3-L-M-N-R-R1-S-T-V-W-Z1	09983	B-C-C1-C2-F1-F3-J-L-M-N-R-R1-S-T-V-X-Z1	34053	B-V	96210	A-B-C1-C2-F-F1-F3-I3-L-M-N-R-R1-T-V-Z1
09869	A-B-C1-C2-E2-F1-F3-L-M-N-R-R1-S-T-V-W-Z1	09984	B-C-C1-C2-F1-F3-J-L-M-N-R-R1-S-T-V-X-Z1	34054	B-V	96212	B-F-F1-F2-H-M-W-Z1
09870	A-B-C1-C2-E2-F-F1-F3-H1-I3-L-M-N-R-R1-S-T-U4-V-Z-Z1	34001	A-B-C1-C2-F-F1-F3-J-L-M-N-R-R1-S-T-V-Z1	34055	B-C1-C2-F-F1-F3-J-L-M-N-R-R1-T-V-Z1	96213	A-B-C-C2-F1-F3-N-R-S
09873	A-B-C1-C2-E2-F-F1-F3-H1-I3-L-M-N-R-R1-S-T-U-U4-V-Z-Z1	34002	B-C1-C2-F-F1-F3-J-L-M-N-R-R1-T-V-Z1	34058	B-C2-F-F1-F2-F3-R-R1-S-V-Z1	96214	A-B-C-C2-F1-F3-R-S-U
09874	A-B-C1-C2-E2-F-F1-F3-H1-I3-L-M-N-R-R1-S-T-U-U4-V-Z-Z1	34004	B-C1-C2-F-F1-F3-J-L-M-N-R-R1-T-V-Z1	34060	B-C1-C2-E2-F-F1-F3-J-L-M-N-R-R1-T-V-Z1	96218	A-B-F-F1-F3-M-R-S-U
09875	A-B-C1-C2-E2-F-F1-F3-H1-I3-L-M-N-R-R1-S-T-U-U4-V-Z-Z1	34007	B-F-F1-H-J-M-N-R-R1-V-Z1	34066	B-C1-C2-F-F1-F3-I3-J-L-M-N-R-R1-S-T-V-X-Z-Z1	96224	A-B-F-F1-F3-M-R-S-U
09877	A-B-C-C2-E-E2-E3-F1-F3-H-H1-J-M-N-R-R1-S-U-V-Z1	34008	B-C1-C2-D-E1-F-F1-H-H1-J-L-M-N-R-R1-T-V-Z1	34067	B-C1-C2-F-F1-F3-J-L-M-N-R-R1-S-T-V-X-Z1	96251	A-B-F-F1-F3-M-R-S-U
09880	A-B-C1-C2-E2-F-F1-F3-H1J-L-N-R-R1-S-T-U-V-Z1	34009	B-C2-F-F1-F3-R-S-V	34068	B-C1-C2-F-F1-F3-J-L-M-N-R-R1-S-T-V-X-Z1	96257	A-B-F-F1-F3-S-U
09890	B-E2-F-H1-N-R-R1-U2-V-Z1	34010	B-C2-F-F1-F3-R-S-V	34069	B-C1-C2-F-F1-F3-I3-J-L-M-N-R-R1-S-T-V-X-Z-Z1	96258	A-F-F3-M-P-R-S-U
09892	A-B-C1-C2-E2-F-F1-F3-J-L-M-N-R-R1-T-V-Z1	34011	B-C1-C2-E2-F-F1-F3-J-L-M-N-R-R1-T-V-Z1	34072	B-C-C2-F1-F3-J-L-M-N-R-S-T-V-X-Z1	96260	A-B-F-F1-F3-M-R-S-U
09895	A-B-C1-C2-E2-F-F1-F3-J-L-M-N-R-T-V-W-Z1	34020	B-C1-C2-F-F1-F3-J-L-M-N-R-R1-T-V-Z1	34078	B-F-F1-F3-N-R-S-V-Z1	96262	A-B-C2-F-F1-F3-R-S-U-V-Z1
09898	B-C-C1-C2-E2-F-F1-F2-H1-N-R-R1-S-U2-V-Z1	34021	B-C1-C2-F-F1-F3-J-L-M-N-R-R1-T-V-Z1	34080	B-F-F1-R-R1-V	96264	A-B-C-C2-F1-F3-R-S-U
09902	A-B-C1-C2-E2-F-F3-H1-M-R-R1-S-V-Z1	34022	B-C1-C2-F-F1-F3-J-L-M-N-R-R1-T-V-Z1	34081	B-F-F1-R-R1-V	96266	A-B-C-C2-F1-F3-R-S-U
09903	B-C1-E2-F1-F3-S-V-Z1	34023	B-C1-C2-F-F1-F3-J-L-M-N-R-R1-T-V-Z1	34082	B-F-F1-R-R1-V	96269	A-B-C-C2-F1-F2-F3-R-S-U-Z1
09904	B-C1-E2-F1-F3-S-V-Z1	34024	B-C1-C2-F-F1-F3-J-L-M-N-R-R1-T-V-Z1	34083	B-F-F1-R-R1-V	96271	A-B-F-F3-M-P-R-S-U
09908	A-B-C2-F-F1-F3-N-R-R1-S-V-Z1	34025	B-F-F1-F3-J-L-M-N-R-R1-T-V-Z1	34084	B-F-F1-R-R1-V	96273	A-B-C2-F-F1-F3-M-R-S-U
09909	A-B-C2-F-F1-F3-N-R-R1-S-V-V1-Z1	34030	B-C1-C2-F-F1-F3-J-L-M-N-R-R1-T-V-Z1	34085	B-C-C1-C2-E2-E3-F-F1-F3-H1-J-R-R1-S-T-V-V1	96275	A-B-F-F1-F3-M-R-S-U
09974	B-F1-F3-J-L-M-N-R-S-T-U2-V-X-Z1	34031	B-C1-C2-F-F1-F3-J-L-M-N-R-R1-T-V-Z1	34086	B-C-C1-C2-E2-E3-F-F1-F3-H1-J-R-R1-S-T-V-V1	96276	A-B-C-C2-F1-F3-R-S
		34032	B-C1-C2-F-F1-F3-J-L-M-N-R-R1-T-V-Z1	34087	B-C-C2-E2-F-F1-F3-R-R1-S-V	96278	A-B-C-C2-F1-F3-R-S-U
		34033	B-C1-C2-F-F1-F3-I3-L-M-N-R-T-V-Z-Z1	34088	B-C-C2-F-F1-F3-R-R1-S-V	96283	A-B-F-F1-F3-S-U
		34034	B-C1-C2-F-F1-F3-I3-L-M-N-R-R1-T-V-Z-Z1	34089	B-C-C2-F-F1-F3-R-R1-S-V	96284	A-B-C2-F-F1-F3-M-R-S-U
		34035	B-C1-C2-F-F1-F3-H-J-L-M-N-R-R1-T-V-Z1	34090	B-C-C2-F-F1-F3-R-R1-S-V	96297	A-B-F-F1-F3-R-S-U
		34036	B-C1-C2-F-F1-F3-J-L-M-N-R-R1-T-V-Z1	34091	B-C-C2-E2-E3-F-F1-F3-R-R1-S-V-Z1	96300	A-B-F3-M-R-S-V-Z1
				34092	B-C-C2-F-F1-F3-R-R1-S-V-Z1	96301	A-B-C-C2-F-F3-M-N-R-S-U2-W
				34093	B-C-C2-F-F1-F3-R-R1-S-V	96303	B-C1-C2-F-F1-H-J-L-M-N-T-V-W-Z1
				34094	B-F-F1-F3-R-R1-S-V	96306	B-F-F1-F2-F3-H-M-R-S-W-Z1
				34095	B-F-F1-R-R1-V	96309	B-C-C2-F-F1-F3-M-N-R-S-V-W
				96201	A-B-F-F1-F3-M-R-S-U	96310	B-C-C2-F-F3-M-R-S-W
				96202	A-B-C2-F-F1-F3-M-R-S-U	96311	B-C-C2-F-F3-M-R-S-W

APO/ FPO/ DPO	See Restrictions	APO/ FPO/ DPO	See Restrictions	APO/ FPO/ DPO	See Restrictions	APO/ FPO/ DPO	See Restrictions
96315	B-C-C2-F-F3-M-R-S-W	96382	B-C-C2-F-F3-M-R-S-W	96551	A-B-C1-C2-F-F1-H-J-L-M-N-R-R1-S-T-V-Z1	96657	B-C-C2-F-F1-F3-R-R1-S-V
96319	B-C-C2-F3-M-R-S-W	96384	B-C-C2-F-F3-M-R-S-W	96552	B-Z1	96660	B-C-C2-F-F1-F3-R-R1-S-V
96321	B-F-F1-F2-F3-H-M-R-S-W-Z1	96385	B-C-C2-F-F3-M-R-S-W	96553	A-B-C-C2-F-F1-F3-H-M-N-R-S-U	96661	B-C-C2-F-F1-F3-R-R1-S-V
96322	B-F-F1-F2-F3-H-M-R-S-W-Z1	96386	B-C-C2-F-F3-M-R-S-W	96554	A-B-C1-C2-F-F1-H-J-L-M-N-R-R1-S-T-V-Z1	96662	B-C-C2-F-F1-F3-R-R1-S-V
96326	B-C-C2-F-F3-M-R-S-W	96387	B-C-C2-F-F3-M-R-S-W	96555	A-B-F-F3-M-R-S-V	96663	B-C-C2-F-F1-F3-R-R1-S-V
96328	B-C-C2-F3-M-R-S-W	96388	B-C-C2-F-F3-M-R-S-W	96557	A-B-F-F3-M-R-S-V	96664	B-C-C2-F-F1-F3-R-R1-S-V
96331	A-B-C-C2-F-F1-F3-J-L-M-N-R-S-U2-W	96389	B-C-C2-F-F3-M-R-S-W	96562	A-B-C1-C2-D-E2-E3-F-F1-H-H1-I3-L-M-N-R-R1-S-T-V-Z-Z1	96665	B-C-C2-F-F1-F3-R-R1-S-V
96336	B-C-C2-F3-M-R-S-V-W	96401	B-C-F-F3-N-R-S-V-V1-Z1	96577	A-B-C2-F-F3-H-M-N-R-S-U	96666	B-C-C2-F-F1-F3-R-R1-S-V
96337	B-C2-F-F1-F3-M-R-R1-S-W	96502	A-B-C-C1-C2-F-F1-F3-J-M-N-R-R1-S-T-U-V	96578	B-F1-F3-H-J-N-R-S	96667	B-C-C2-F-F1-F3-R-R1-S-V
96338	A-B-C-C2-F-F3-M-R-S-U2-W	96504	A-B-C-C1-C2-F-F1-F3-I3-L-M-N-R-R1-T-V-W-Z-Z1	96595	B-F-F3-R-S-V-Z1	96668	B-C-C2-F-F1-F3-R-R1-S-V
96339	A-B-F-F3-M-R-S-U2-W	96505	A-B-C-C1-C2-F-F1-F3-I3-L-M-N-R-R1-S-T-V-W-Z-Z1	96598	B-C2-F3-I3-N-R-S-V-V1	96669	B-C-C2-F-F1-F3-R-R1-S-V
96343	A-B-F-F3-M-P-R-S-U2	96507	A-B-C1-C2-F-F1-H-J-L-M-N-T-V-Z1	96599	B-C2-F3-N-R-S-V	96670	B-C-C2-F-F1-F3-R-R1-S-V
96346	B-F-F1-F2-F3-H-M-R-S-W-Z1	96510	B-I3-N-V	96601	B-V	96671	B-C-C2-F-F1-F3-R-R1-S-V
96347	B-C2-F-F1-F2-F3-H-M-R-S-W-Z1	96511	B-I3-N-V	96602	B-V	96672	B-C-C2-F-F1-F3-R-R1-S-V
96349	B-C-C2-F-F1-F2-F3-H-M-R-S-Z1	96515	B-C-D-E1-F-F1-F3-H-H1-M-N-R-S-T-Z1	96603	B-V	96673	B-C-C2-F-F1-F3-R-R1-S-V
96350	B-F-F1-F2-F3-H-M-R-S-W-Z1	96516	B-C-C2-D-E1-E2-F-F1-F3-H-H1-M-N-R-S-T-Z1	96604	B-V	96674	B-C-C2-F-F1-F3-R-R1-S-V
96351	B-C-C2-F-F1-F2-F3-H-M-R-R1-S-T-Z1	96517	B-C-D-E1-E2-F-F1-F3-H-H1-M-N-R-T-U-V-Z1	96605	B-V	96675	B-C-C2-F-F1-F3-R-R1-S-V
96362	B-C2-F-F1-F2-F3-H-M-R-S-W-Z1	96520	B-F-N-U3-V	96606	B-C-C2-F-F3-M-R-S-V-W	96677	B-C-C2-F-F1-F3-R-R1-S-V
96365	B-C-C2-F3-M-R-S-W-V	96521	B-C1-C2-F-F1-J-L-M-N-R-R1-S-T-V-Z1	96607	B-V	96678	B-C-C2-F-F1-F3-R-R1-S-V
96367	B-C-C2-F3-L-M-R-S-W	96530	A-B-C1-C2-F-F1-H-H1-J-L-M-N-R-R1-S-T-V-Z1	96608	B-E2-F-H1-R1-U2-V-Z1	96679	B-C-C2-F-F1-F3-R-R1-S-V
96368	B-C-C2-F3-M-R-S-W	96531	A-B-C-C2-F-F1-F3-H-M-N-R-S-U-V	96609	B-E2-F-H1-R1-U2-V-Z1	96681	B-V
96370	B-F-F1-F2-H-M-W-Z1	96532	A-B-C1-C2-F-F1-H-J-L-M-N-R-R1-S-T-V-Z1	96610	B-C-C2-F-F3-H1-R-R1-S-U2-V-Z1	96682	B-C-C2-F-F1-F3-R-R1-S-V
96371	B-C-C2-F-F3-M-R-S-W	96533	A-B-C-C2-F-F1-F2-F3-R-R1-S-U-V-Z1	96611	B-C-C2-F-F3-H1-R-R1-S-U2-V-Z1	96683	B-C-C2-F-F1-F3-R-R1-S-V
96372	B-C-C2-F-F3-M-R-S-W	96534	A-B-C-C2-F-F1-F2-F3-R-R1-S-U-V-Z1	96612	B-C-C2-F-F3-H1-R-R1-S-U2-V-Z1	96686	B-C-C2-F-F1-F3-R-R1-S-V
96373	B-C-C2-F-F3-M-R-S-W	96535	A-B-C1-C2-F-F1-J-L-M-N-R-R1-S-T-V-Z1	96613	B-C-C2-F-F3-H1-R-R1-S-U2-V-Z1	96687	B-C-C2-F-F1-F3-R-R1-S-V
96374	B-C-C2-F-F3-M-R-S-W	96537	B-V-Z1	96615	B-F-F1-R-R1-V	96688	B-C-C2-F-F1-F3-R-R1-S-V
96375	B-C-C2-F-F3-M-R-S-W	96540	B-F1-F2-F3-S-V-Z1	96616	B-C2-F-F1-F3-R-R1-S-V	96689	B-C-C2-F-F1-F3-R-R1-S-V
96376	B-C-C2-F-F3-M-R-S-W	96542	B-F-F1-F2-F3-S-V-Z1	<b>96619</b>	<b>B-C-C2-F1-F3-R-S-V</b>	96690	B-C-C2-F-F1-F3-R-R1-S-V
96377	B-C-C2-F-F3-M-R-S-W	96543	B-F-F1-F2-F3-P-S-V-Z1	96620	B-C-C2-F-F1-F3-R-R1-S-V	96691	B-C-C2-F-F1-F3-R-R1-S-V
96378	B-C-C2-F-F3-M-R-S-W	96544	B-F-F1-F2-F3-P-S-V-Z1	96628	B-C-C2-F-F1-F3-R-R1-S-V	96692	B-C-C2-F-F1-F3-R-R1-S-V
96379	B-C-C2-F-F3-M-R-S-W	96548	A-B-C2-F-F1-F3-H-M-R-S-U	96629	B-C-C2-F-F1-F3-R-R1-S-V	96693	B-C-C2-F-F1-F3-R-R1-S-V
96380	B-C-C2-F-F3-M-R-S-W	96549	A-B-C1-C2-F-F1-H-J-L-M-N-R-R1-S-T-V-Z1	96632	B-C-C2-F-F1-F3-R-R1-S-V	96694	B-C-C2-F-F1-F3-R-R1-S-V
		96550	A-B-H-M-N-U-V-Z1	96633	B-V	96695	B-C-C2-F-F1-F3-R-R1-S-V
				96641	B-V	96696	B-F-F1-R-R1-V
				96642	B-V	96698	B-C-C2-F-F1-F3-R-R1-S-V
				96643	B-F-F1-F3-R-R1-S-V		
				96644	B-V		
				96645	B-V		
				96649	B-C-C2-F-F1-F3-R-R1-S-V		
				96650	B-F-F1-R-R1-V		

## RESTRICTIONS

## LEGEND

PS Form 2976, *Customs — CN 22 (Old C 1) and Sender's Declaration* (green label)

PS Form 2976-A, *Customs Declaration and Dispatch Note*

PS Form 2976-B, *Priority Mail Express International Shipping Label and Customs Form*

ATF	= Bureau of Alcohol, Tobacco, Firearms, and Explosives
Box C	= Department of State (DOS) contractor personnel
Box R	= Retired military personnel
DPO	= Diplomatic Post Office
MPO	= Military Post Office
PACT	= Prevent All Cigarette Trafficking Act
PAL	= Parcel Airlift
PMEMS	= Priority Mail Express Military Service
PUB 52	= Publication 52, <i>Hazardous, Restricted, and Perishable Mail</i>
SAM	= Space Available Mail
USDA	= United States Department of Agriculture

**Note:** Mail order catalogs are prohibited as SAM or PAL mail.

**A.** Securities, currency, or precious metals, including in their raw, unmanufactured state, are prohibited. Official Mail shipments are exempt from this restriction.

**A1.** Reserved for future use.

**A2.** Reserved for future use.

**B.** Other than for PMEMS and the exceptions listed below, a customs declaration PS Form 2976 or PS Form 2976-A is required for all items weighing 16 ounces or more, and for all items (regardless of weight) containing potentially dutiable mail contents (e.g., merchandise or goods) addressed to or from this ZIP Code. Other than the exceptions listed below, all PMEMS mailpieces (regardless of mail contents or weight) addressed to or from this ZIP Code must bear a properly completed PS Form 2976-B. The surface area of the address side of the mailpiece must be large enough to contain the applicable customs declaration. The following exceptions apply to known mailers, who for this purpose are defined as follows:

- Business mailers who enter volume mailings through business mail entry units or other bulk mail acceptance locations, pay postage through advance deposit accounts, use permit imprints for postage payment, and submit completed postage statements at the time of entry that certify that the mailpieces contain no dangerous materials that are prohibited by postal regulations. Such business mailers are exempt from providing customs documentation on non-dutiable letters and printed matter.
- All federal, state, and local government agencies whose mailings are regarded as "Official Mail." Such agencies are exempt from providing customs documentation, except for any items addressed to an MPO or DPO to which restriction "B2" applies.

**B2.** All federal, state, and local government agencies must complete customs documentation when sending potentially dutiable mail addressed to or from this MPO or DPO.

**C.** Cigarettes and other tobacco products, including tobacco leaves, chewing and pipe tobacco, snuff, and cigars are prohibited, including those that are authorized in Publication 52 under PACT.

**C1.** Obscene and horror articles, images, prints, paintings, cards, films, videotapes, comic books, etc., are prohibited.

**C2.** E-cigarettes and related products (e.g., nicotine liquids, e-liquids, parts, or supplies) are prohibited.

**D.** Coffee is prohibited.

**E.** Medicines (prescription, over-the-counter, vitamins, and supplements) are prohibited when mailed to individuals for human or animal use. This prohibition does not apply when medicines are sent as Official Mail only between specifically designated agencies such as pharmaceutical distributors, hospitals, clinics, and pharmacies.

**E1.** Mailers are responsible to ensure that all medicines and vaccines conform to host nation laws.

**E2.** Any matter depicting nude or seminude persons, pornographic, or sexual items are prohibited. Non-authorized political materials are prohibited. Religious materials contrary to the Islamic faith are prohibited in bulk quantities, but individual items for the personal use of the addressee are permissible.

**E3.** Radio transceivers, cordless/cellular telephones, global positioning systems, scanners, base stations, and handheld transmitters are prohibited.

**F.** Firearms of any type are prohibited, except firearms mailed to or by official U.S. government agencies. This restriction does not apply to firearms mailed from this MPO ZIP Code, provided ATF and USPS regulations are met. Antique firearms do not require an ATF form.

**F1.** Weapons of any type are prohibited.

**F2.** Mailing firearms to or from this MPO ZIP Code is restricted to one shotgun and one single shot .22 caliber rifle per individual.

**F3.** Replica weapons and inert explosive devices (such as grenades) and weapons parts are prohibited.

**G.** Parcels of any class are prohibited.

**H.** Meats, including preserved meats, bones, skin, hair, feathers, horns or hoofs of hoofed animals, and wool samples whether hermetically sealed or not, are prohibited.

**H1.** Pork or pork by-products are prohibited.

**I.** Reserved for future use.

**I1.** Reserved for future use.

**I2.** Reserved for future use.

**I3.** Mail of all classes must fit in a mail sack. Mail may not exceed the following dimensions:

- Maximum length 27 inches.
- Maximum width 14 inches.
- Maximum height 14 inches.

**J.** Standard Post and Parcel Select parcels may not exceed 108 inches in length and girth combined.

**K.** Reserved for future use.

**L.** All Official Mail is prohibited.

**M.** Fruits, vegetables, live animals, and live plants are prohibited.

**N.** Registered Mail service is prohibited.

**O.** Reserved for future use.

**P.** Official Mail only.

**Q.** Mail may not exceed 66 pounds, and size is limited to 42 inches maximum length and 72 inches maximum length and girth combined.

**R.** All alcoholic beverages, including those mailable under Publication 52, Part 421, are prohibited.

**R1.** Materials used in the production of alcoholic beverages (i.e., distilling material, hops, malts, yeast, etc.) are prohibited.

**S.** Synthetic cannabinoids used to stimulate the central nervous system commonly known as "synthetic marijuana," "K2," or "Spice" are prohibited.

**T.** Mailings of household shipments and case lots of food to or from an MPO require military transportation office approval prior to mailing. Mailings to or from a DPO require pre-approval from the Diplomatic Pouch and Mail Director.

**U.** Mail addressed to Retirees (Box R) is limited to 16 ounces and up to a 90-day supply of TRICARE medications. This restriction does not apply to mail endorsed "Free Matter for the Blind or Handicapped."

**U1.** Mail is limited to First-Class Mail items, including audio and video media, weighing 13 ounces or less. This limitation does not apply to Official Mail.

**U2.** Retirees (Box R) are not authorized mail service.

**U3.** Reserved for future use.

**U4.** Mail addressed to Box C is limited to 2 lbs.

**V.** PMEMS is not available.

**V1.** Electronic Delivery status information for Extra Services is not available on *USPS.com*. Manual record of delivery may be available upon request.

**W.** Hermetically sealed packages of meat products bearing USDA certification, such as dried beef, salami, and sausage, may be mailed. 200 grams of tobacco per parcel are permitted duty free.

**X.** Cremated remains are prohibited.

**Y.** Mail is limited to First-Class Mail and Priority Mail items only. This restriction also applies to Official Mail.

**Z.** No outside pieces (OSPs).

**Z1.** The following restriction is applicable only to International Service Centers (ISC)/Exchange Offices. An Anti-Pilferage Seal (Item No O817E or O818A) is required on all pouches and sacks.

— *International Network Operations,  
Global Business, 1-12-23*

## Freely Associated States Restrictions

We list the mailing restrictions for Freely Associated States (FAS) in the Pull-Out section of the *Postal Bulletin*. All FAS Restrictions will be updated periodically.

### Freely Associated States

Mail addressed to freely associated states is subject to certain conditions or restrictions of mailing regarding content, preparation, and handling. The following FAS Restrictions table outlines these conditions as listed by each affected FAS ZIP Code™ through the use of footnoted mailing restrictions codes (see the [Restrictions](#) following the table). For more information on available extra services for FAS destinations, see *Mailing Standards of the United States Postal Service, Domestic Mail Manual (DMM®)*, part 503.

Acceptance clerks must use the table with the Retail System Software terminal to determine which FAS ZIP Codes are active and which conditions of mailing apply.

### FAS Restrictions Table

FAS Table	See Restrictions
96939	A, B
96940	A, B
96941	A, B
96942	A, B
96943	A, B
96944	A, B
96960	A, B
96970	A, B, D
Marshall Islands	C
Federated States of Micronesia	C

### RESTRICTIONS LEGEND

PS Form 2976, *Customs Declaration CN 22 – Sender's Declaration*

PS Form 2976-A, *Customs Declaration and Dispatch Note*

FAS = Freely Associated State

- A.** Bank currency (coin and paper) is prohibited.
- B.** Signature Confirmation, Signature Confirmation Restricted Delivery, Adult Signature Requested, Adult Signature Restricted Delivery, Certified Mail Adult Signature Required, and Certified Mail Adult Signature Restricted Delivery not available.
- C.** Collect on Delivery is prohibited.
- D.** Betel nut (Areca catechu) is prohibited.

— *Asia-Pacific Relations,  
Global Business, 1-12-23*

Labeling List Changes (continued)

L606 5-Digit Scheme — Standard Mail, First-Class Mail, and Package Services Parcels

\* \* \* \* \*

Newly Added

Column A Destination ZIP Codes	Column B Label Container To (Added To)
10011	NEW YORK NY 10011
10102	NEW YORK NY 10019
10113	NEW YORK NY 10011
10114	NEW YORK NY 10011
10133	NEW YORK NY 10023
10160	NEW YORK NY 10010
26501	MORGANTOWN WV 26501
26505	MORGANTOWN WV 26501
26541	MORGANTOWN WV 26501
26543	MORGANTOWN WV 26501
46032	CARMEL IN 46032
46082	CARMEL IN 46032
46901	KOKOMO IN 46901
46902	KOKOMO IN 46902
46903	KOKOMO IN 46901
46904	KOKOMO IN 46901
46932	KOKOMO IN 46902
46998	KOKOMO IN 46902
49201	JACKSON MI 49201
49202	JACKSON MI 49202
49203	JACKSON MI 49202
49204	JACKSON MI 49201
49234	JACKSON MI 49201
49240	JACKSON MI 49201
49254	JACKSON MI 49201
49259	JACKSON MI 49201
49269	JACKSON MI 49201
49283	JACKSON MI 49201
53518	MADISON WI 53704
53704	MADISON WI 53704
53706	MADISON WI 53706

Column A Destination ZIP Codes	Column B Label Container To (Added To)
53711	MADISON WI 53711
53714	MADISON WI 53706
53716	MADISON WI 53706
53717	MADISON WI 53717
53719	MADISON WI 53717
53744	MADISON WI 53711
54911	APPLETON WI 54911
54912	APPLETON WI 54911
54913	APPLETON WI 54915
54914	APPLETON WI 54911
54915	APPLETON WI 54915
54919	APPLETON WI 54911
60502	AURORA IL 60502
60504	AURORA IL 60504
60505	AURORA IL 60504
60506	AURORA IL 60502
60540	NAPERVILLE IL 60540
60563	NAPERVILLE IL 60563
60565	NAPERVILLE IL 60563
60566	NAPERVILLE IL 60540
60567	NAPERVILLE IL 60540
65201	COLUMBIA MO 65201
65211	COLUMBIA MO 65201

Deleted

Column A Destination ZIP Codes	Column B Label Container To (Deleted From)
77450	KATY TX 77450
77491	KATY TX 77450

— Logistics, Network Development, and Support, Network Operations, 1-12-23

Finance

2023 Social Security and Medicare Tax Withholding Rates and Limits

For 2023, the maximum limit on earnings for withholding of Social Security (old-age, survivors, and disability insurance) tax is \$160,200.00. The Social Security tax rate remains at 6.2 percent. The resulting maximum Social Security tax for 2023 is \$9,932.40.

There is no limit on the amount of earnings subject to Medicare (hospital insurance) tax. The Medicare tax rate applies to all taxable wages and remains at 1.45 percent with the exception of an “additional Medicare tax” assessed against all taxable wages paid in excess of the applicable threshold (see Note). The FICA tax rate, which is the combined Social Security rate of 6.2 percent and the Medicare rate of 1.45 percent, remains 7.65 percent for 2023 (or 8.55 percent for taxable wages paid in excess of the applicable threshold).

The information in the table shows the changes in Social Security withholding limits from 2022 to 2023. There are no changes in Medicare limits.

Tax	2022 Limit	2023 Limit
Social Security gross	\$147,000.00	\$160,200.00
Social Security liability	\$9,114.00	\$9,932.40
Medicare gross	No limit	No limit
Medicare liability	No limit	No limit

**Note:** The Patient Protection and Affordable Care Act signed into law March 23, 2010, created the “additional Medicare tax” that changed Medicare withholding computations effective January 1, 2013. All wages, self-employment income, and other compensation that are subject to regular Medicare tax and are paid in excess of the applicable threshold are subject to the additional Medicare tax. Employers are required to withhold the additional Medicare tax at a 0.9 percent rate on wages and other compensation paid to an employee in excess of \$200,000 in a calendar year. There is no employer match for the additional Medicare tax.

— Payroll, Controller, 1-12-23

## Form W-4 Completion for Employees Claiming Exempt Status for 2023

Internal Revenue Service (IRS) regulations permit employees who anticipate no federal tax liability for 2023 to claim total exemption from federal tax withholding if they owed no federal taxes for 2022. These regulations also require that employees submit a new Form W-4, *Employee's Withholding Certificate*, every calendar year if they claim an exempt status. However, employees can use *PostalEASE* to file their Form W-4 instead of filing a hard copy Form W-4.

Employees may meet IRS filing requirements for exempt Form W-4 using the following methods:

- Log on to *PostalEASE* at [liteblue.usps.gov](https://liteblue.usps.gov), or
- Call *PostalEASE* toll-free at 877-477-3273, option 1.

To update your Form W-4 for calendar year 2023, follow the Form W-4 instructions provided by *PostalEASE*. If you need to contact the HR Shared Service Center (HRSSC) in Greensboro, NC, for more information, call 877-477-3273, menu option 5, and then request "Benefits" when prompted. If you have a hearing disability and you need to contact the HRSSC, call the Federal Relay Service at 800-877-8339.

Any employee currently in an exempt status who does not submit a new Form W-4 claiming a continuation of the exempt status will be converted to a taxable status, effective Pay Period (PP) 05-2023. For the exempt status to remain effective into 2023, the employee must enter updated Form W-4 information into *PostalEASE* no later than Wednesday, February 22, 2023, 3:00 P.M. CST. However, to ensure a seamless continuation of the exempt

status for 2023, the Postal Service™ encourages employees to update their W-4 information no later than a day or two in advance of the February 22 cut-off date.

**Note:** An employee currently in an exempt status may use *PostalEASE* to file for exemption after the February 22 cut-off date; however, in that instance, the employee's exempt status will not be continuous from 2022 to 2023. Depending on the day of the pay period in which the employee enters his or her W-4 information into *PostalEASE*, the 2023 exempt status is effective the pay period of entry or the pay period following entry.

Any employee who claimed exempt status for 2022 and does not submit a new Form W-4 will have federal taxes withheld at the rate normally applicable to an employee claiming "Single" with no other deductions. Employees with an exempt status (as of PP 26-2022) will receive printed messages on their earnings statements during PP 02-2023, PP 03-2023, and PP 04-2023 reminding them of the requirement to file a new Form W-4.

### Reminders

- The Postal Service prohibits all administrative and managerial employees from providing any tax advice to employees about the completion of Form W-4.
- The Postal Service no longer requires employees to send information about exempt Form W-4 to Eagan Accounting Services.

— Payroll,  
Controller, 1-12-23

## IRS Reporting Requirements for Attorney Fees, Back Pay, or Wages

The purpose of this notice is to ensure that employees are aware of the Internal Revenue Service (IRS) income reporting requirements when attorney fees are awarded.

In 2005, the IRS issued regulations that changed how attorney fee awards are to be treated for tax reporting purposes, based upon the Supreme Court's decision in *Commissioner v. Banks*, 125 S. Ct. 826 (2005). Previously, when payment of attorney fees was made directly to the attorney, the payment to the attorney was only reported on the attorney's Form 1099-MISC, *Miscellaneous Income*. In *Commissioner v. Banks*, the Supreme Court held that when a litigant's recovery constitutes income, the litigant's income includes the portion of the recovery paid to the attorney as a contingent fee. Thus, pursuant to Internal Revenue Code (IRC) section 6041(a) and 6045(f), these fees cannot be excluded from the plaintiff's gross income for tax reporting purposes.

The following situations require variations in the reporting requirements:

- **Attorney Fees Paid Directly to an Attorney** — These fees will be reported in Box 3 (Other Income) on the employee's Form 1099-MISC. These fees will also be reported on the attorney's Form 1099-MISC.
- **Settlement (no back pay or wages) is Paid Directly to Employee and Attorney Fees are Identified** — The entire amount of the settlement (including attorney fees) will be reported in Box 3 (Other Income) on the employee's Form 1099-MISC. The employee's attorney will not be issued a Form 1099-MISC.
- **Settlement (back pay or wages) is Paid Directly to Employee and Attorney Fees are Identified** — The back pay or wages portion of the settlement is subject to income and Federal Insurance Contributions Act (FICA) tax withholdings. The back pay or wages portion will be reported on the employee's Form W-2. The identified attorney fees will be reported in Box 3 (Other Income) on the employee's Form 1099-MISC. The employee's attorney will not be issued a Form 1099-MISC.
- **Settlement (back pay or wages) is Paid Directly to Employee and Attorney Fees are not Identified** — The entire amount of the settlement (including attorney fees) is subject to income and FICA tax withholdings. The entire amount will be reported on the employee's Form W-2. The employee's attorney will not be issued a Form 1099-MISC.
- **Settlement Check (no back pay or wages) is Issued Jointly to Employee and Attorney** — The entire amount of the settlement will be reported in Box 3 (Other Income) on the employee's Form 1099-MISC and will also be reported on the attorney's Form 1099-MISC.
- **Settlement Check (back pay or wages) is Issued Jointly to Employee and Attorney** — The entire amount of the settlement (including attorney fees) is subject to income and FICA tax withholdings. The entire amount will be reported on the employee's Form W-2. The net amount of the settlement (the actual amount of the check) will be reported on the attorney's Form 1099-MISC.
- **Settlement Check (back pay or wages) is Split between Employee and Attorney** — The entire amount of the settlement (including attorney fees) is subject to income and FICA tax withholdings. The settlement check is issued to the employee, but before disbursement, the check is pulled and the net of the settlement (the actual amount of the check) is split between the employee and his or her attorney. The entire amount of the settlement will be reported on the employee's Form W-2. The actual amount of the check paid to the attorney will be reported on the attorney's Form 1099-MISC.

The United States Postal Service® makes no representation regarding the taxability of these payments. Potential tax liability resulting from any of these payments is the employee's responsibility. The IRS makes the determination on whether taxes must be paid. The Postal Service does not provide tax advice, and employees must direct any tax reporting questions to the IRS or a qualified tax attorney or accountant.

— Payroll,  
Controller, 1-12-23

## Local Tax Code Information

The United States Postal Service® collects appropriate federal, state, and in some cases, local taxes directly from the pay of its employees who are subject to these deductions. Based on agreements between individual local taxing authorities and the U.S. Department of the Treasury, the Postal Service™ collects a number of city and county income taxes, occupational taxes, mental health taxes, residence taxes, local service taxes, and in some locations, more than one of these taxes.

The local taxes listed in the following table are the taxes for which there are agreements between the taxing authorities and the U.S. Department of the Treasury. Some of these taxes are automatically deducted from the salaries of Postal Service employees who work within the geographic boundaries of the specific taxing authorities. However, most of these taxes are not automatic deductions. If you are subject to any of these local taxes, you must be proactive and submit a completed PS Form 4, *Employee's City or County Withholding Certificate*, to the HR Shared Service Center (HRSSC). As a Postal Service employee, you are personally responsible for ensuring correct local taxes are deducted from your pay. If you have any questions regarding your tax liability or responsibility, contact your local taxing authority.

In addition to the taxes listed in the following table, there are other local taxes for which there are no agreements between the individual local taxing authorities and the

U.S. Department of the Treasury. Employees must make their own payments to these taxing authorities. The Postal Service will not collect local taxes for a taxing entity that has not established an agreement with the U.S. Department of the Treasury.

We remind all Postal Service employees that they are bound by the materials contained within the *Code of Ethics, Principles of Ethical Conduct for Government Officers and Employees*. This includes Principle 12, which states: "Employees shall satisfy in good faith their obligations as citizens, including all just financial obligations, especially those — such as federal, state, and local taxes — that are imposed by law."

If you live or work in a locality that is subject to one or more of the taxes listed in the table and the correct deduction(s) is not being withheld from your pay, you can immediately complete a PS Form 4, *Employee's City or County Withholding Certificate*. After completing this form, mail it to the following address:

HR Shared Services Center  
PO Box 970400  
Greensboro, NC 27497-0400

Direct all questions concerning these local taxes to the HRSSC by phone at 877-477-3273, option 5 (Federal Relay Service: 800-877-8339).

State and City or County	Type of Tax	Local Tax Code
<b>Alabama</b>		
Bessemer	Occupational Tax	081
Birmingham	Occupational Tax	084
Gadsden	Occupational Tax	094
Macon County	Occupational Tax	096
<b>Colorado</b>		
Aurora	Occupational Tax	495
Denver	Occupational Tax	294
<b>Delaware</b>		
Wilmington	City Income Tax	903
<b>Kentucky</b>		
Boone County	1. Ordinance Tax	015
	2. Mental Health Tax	016
Bowling Green	Occupational Tax	215
Covington	City Income Tax	252
Florence	Occupational Tax	836
Frankfort	Occupational Tax	292
Kenton County	Occupational Tax	435
Lexington-Fayette Urban County Gov	Occupational Tax	525
Louisville Metro Area/ Jefferson County	Occupational Tax	546
Madison County	County Income Tax	547
Owensboro	Occupational Tax	201
Richmond	Occupational Tax	735

State and City or County	Type of Tax	Local Tax Code
<b>Michigan</b>		
Battle Creek	City Income Tax	063
Detroit	City Income Tax	315
Flint	City Income Tax	357
Grand Rapids	City Income Tax	378
Lansing	City Income Tax	483
Pontiac	City Income Tax	693
Saginaw	City Income Tax	756
<b>Missouri</b>		
Kansas City	City Income Tax	420
St. Louis	City Income Tax	819
<b>New York</b>		
New York City	City Income Tax	588
<b>Ohio</b>		
Akron	City Income Tax	021
Brecksville	City Income Tax	105
Brook Park	City Income Tax	106
Canton	City Income Tax	126
Cincinnati	City Income Tax	168
Cleveland	City Income Tax	189
Columbus	City Income Tax	231
Dayton	City Income Tax	273
Fairview Park	City Income Tax	274
Heath	City Income Tax	399
Kettering	City Income Tax	441



State and City or County	Type of Tax	Local Tax Code
Mansfield	City Income Tax	567
Newark	City Income Tax	698
Oberlin	City Income Tax	609
Sharonville	City Income Tax	785
Springfield	City Income Tax	798
Toledo	City Income Tax	840
Whitehall	City Income Tax	861
Youngstown	City Income Tax	924
<b>Pennsylvania</b>		
Bethlehem Township	City Income Tax	335
Erie	1. City Income Tax	336
	2. Local Services Tax	337
Greene Township	City Income Tax	375
Hanover Township	1. City Income Tax	343
	2. Local Services Tax	342
Harrisburg	1. City Income Tax	385
	2. Local Services Tax	386
Horsham Township	1. City Income Tax	354
	2. Local Services Tax	352
Lancaster	1. City Income Tax	462
	2. Local Services Tax	465
Marshall Township	Local Services Tax	555
Middletown	City Income Tax	388
Philadelphia	City Income Tax	651

State and City or County	Type of Tax	Local Tax Code
Pittsburgh	1. City Income Tax	672
	2. Local Services Tax	673
Reading	1. City Income Tax	714
	2. Local Services Tax	715
Scranton	1. City Income Tax	777
	2. Local Services Tax	778
South Park Township	1. City Income Tax	775
	2. Local Services Tax	776
Sunbury/Gregg Township (includes Allenwood)	City Income Tax	320
Susquehanna Township	Local Services Tax	395
Tredyffrin Township	Local Services Tax	360
Tinicum Township	1. City Income Tax	779
	2. Local Services Tax	780
Warminster Township	1. City Income Tax	856
	2. Local Services Tax	855
Wilkes-Barre	1. City Income Tax	882
	2. Local Services Tax	883
York	City Income Tax	492
<b>West Virginia</b>		
Charleston	City Service Tax	899
Huntington	City Service Tax	900
Parkersburg	City Service Tax	901

— Payroll,  
Controller, 1-12-23

## Human Resources

### Glaucoma Awareness: Lower Your Risk

Vision loss from glaucoma usually first affects peripheral vision. Peripheral vision is what you can see on the side of your head when looking ahead. Later, it will affect your central vision, which is needed for seeing objects clearly and for common daily tasks like reading and driving. There are many steps you can take to help protect your eyes and lower your risk of vision loss from glaucoma<sup>1</sup>:

- If you are in a high-risk group, get a comprehensive dilated eye exam to catch glaucoma early and start treatment. Prescription eye drops can stop glaucoma from progressing. Your eye care specialist will recommend how often to return for follow-up exams. Medicare covers a glaucoma test once a year for people in high-risk groups.
- Even if you are not in a high-risk group, getting a comprehensive dilated eye exam by the age of 40 can help catch glaucoma and other eye diseases early.

- Open-angle glaucoma does not have symptoms and is hereditary, so talk to your family members about their vision health to help protect your eyes — and theirs.
- Maintaining a healthy weight, controlling your blood pressure, being physically active, and avoiding smoking will help you avoid vision loss from glaucoma. These healthy behaviors will also help prevent type 2 diabetes and other chronic conditions.

Glaucoma is treated with eye drops, oral medicine, or surgery (or a combination of treatments) to reduce pressure in the eye and prevent permanent vision loss. Take medicine as prescribed and tell your eye care specialist about any side effects. You and your doctor are a team. If laser or surgical procedures are recommended to reduce the pressure in your eye, make sure to schedule regular follow-up visits to continue to monitor eye pressure.

— Benefits and Wellness,  
Human Resources, 1-12-23

1. Source: [cdc.gov/visionhealth/resources/features/glaucoma-awareness.html](https://www.cdc.gov/visionhealth/resources/features/glaucoma-awareness.html). This information does not constitute medical advice, and individuals should consult their health care professional.

# Glaucoma Awareness



## Know the Facts



Glaucoma is a group of diseases that damage the eye's optic nerve and can result in vision loss and even blindness.



About 3 million Americans have glaucoma. It is the second leading cause of blindness worldwide.



Open-angle glaucoma, the most common form, results in increased eye pressure. There are often no early symptoms, which is why 50% of people with glaucoma don't know they have the disease.

Get a healthy start this year by learning about glaucoma and taking steps to reduce your risk of vision loss! Schedule your eye exam day!



## Information Security

### Keep Your Eyes Open for Phishing Emails

For Postal Service™ employees and contractors, email security is a high priority since roughly 94 percent of malware is delivered through email. Users must stay vigilant and report any suspicious communications or alleged threats to the Corporate Information Security Office (CISO).

The average office employee receives around 121 emails a day. With so much daily volume, Postal Service employees must follow these simple steps to ensure the safety of their inbox and the USPS® network:

- **Slow down.** Pause and evaluate messages before acting. Be wary of “urgent” requests.
- **Verify senders.** If an email is from an “[EXTERNAL]” address, proceed with caution.
- **Hover, don’t click.** Check that all hyperlinked descriptions match their destination by hovering your mouse over the link.

- **Beware of attachments.** Don’t open or click anything attached to a suspicious email.
- **Spell check.** Spelling and grammar mistakes often indicate a phishing attempt.

If you think you’ve received a suspicious email, report it to CISO. Select the suspicious email in your inbox — multiple messages can be selected, if necessary — and click the “Report to CyberSafe” button on the Outlook toolbar. If the email is already open, the button will appear in the email toolbar as well.

If you don’t see the “Report to CyberSafe” button in your Outlook toolbar, you can find instructions for installing the add-on at [usps.servicenowservices.com/kb\\_view.do?sysparm\\_article=KB0046151](https://usps.servicenowservices.com/kb_view.do?sysparm_article=KB0046151).

— Corporate Information Security Office,  
Chief Information Security Officer, 1-12-23

## Mailing and Shipping Services

### Streamlining Returns for Simplification

The United States Postal Service® (USPS®) is working on an effort to drive product simplification. As part of this initiative, USPS will implement these changes in 2023.

#### **Remove Parcel Return Service Rates in Notice 123, Price List**

Parcel Return Service (PRS) was designed for shippers who enter mail at destination entry facilities via Parcel Select® destination entry, which offers convenient access for PRS parcel pick-up at the same locations where destination entry mail is deposited (see *Mailing Standards of the United States Postal Service*, Domestic Mail Manual, section 505.4.0).

However, not all customers are eligible to receive PRS rates; only Negotiated Service Agreement (NSA) customers are eligible to use PRS. NSAs provide customized pricing/prices and classifications under the terms and conditions established in the agreement and may include modifications to current mailing standards and other postal requirements.

#### **Eliminate Certificate of Mailing and Signature Confirmation Services for Returns Only**

A Certificate of Mailing provides evidence that you sent an item, but does not provide record of delivery, proof of mailing, or insure items against loss.

Signature Confirmation provides shippers with the name of the recipient as well as the delivery date, time, and location; a copy of the recipient’s signature will also be faxed, mailed, or emailed to the customer upon request.

Both Certificate of Mailing and Signature Confirmation services cause confusion and make it challenging for customers to understand price point differences. There has also been a decline in the usage of these two extra services in relation to our return products. The Postal Service believes that eliminating these extra services for our return products provides customers with a more efficient process and an improved customer experience.

#### **Eliminate Balloon Pricing for Parcel Return Service**

Balloon pricing was used to discourage the shipment of large, lightweight items that take up a lot of space, but aren’t very heavy. If the package weighs less than 20 pounds, but measures more than 84 inches (but not more than 108 inches) in combined length and girth, customers are charged the oversized price for a 20-pound parcel. Eliminating balloon pricing for PRS will simplify the product offering and applicable surcharges, as well as employee responsibility to correctly assess and apply balloon pricing for this service.

— Shipping and Commerce Product Management,  
Business Solutions, 1-12-23

## Stamp Services

### Stamp Announcement 23-9: Women's Soccer Stamp



©2022 USPS

On February 16, 2023, in Orlando, FL, the United States Postal Service® will issue the *Women's Soccer* stamp (Forever® priced at the First-Class Mail® rate) in one design, in a pressure-sensitive adhesive (PSA) pane of 20 stamps (Item 483000). This stamp will go on sale nationwide February 16, 2023, and must not be sold or canceled before the first-day-of-issue.

This stamp issuance celebrates women's soccer in the United States. From youth leagues to the elite world champion U.S. national team, millions of girls and women throughout the country participate in this fast-paced, competitive sport. The graphic stamp artwork depicts a female soccer player in action, walloping a ball with a side volley. Conjuring the aesthetic of mid-century print design, the illustrator used simplified shapes and bold colors to convey the high energy and fast motion of the sport. The somewhat grainy rendering lends a timeless quality to the design, evoking not just a single all-star athlete or era but the entire legacy of women's soccer. Art director Antonio Alcalá designed the stamp with an original illustration by Noah MacMillan (1988–2022).

#### Availability to Post Offices: Item 483000, Women's Soccer (Forever Priced at the First-Class Mail Rate) Pane of 20 Stamps

Stamp Fulfillment Services will not make an automatic push distribution to Post Offices. Post Offices may begin ordering stamps before the first-day-of-issue through SFS Web at [sfsweb.usps.gov/sfsweb](https://sfsweb.usps.gov/sfsweb).

#### How to Order the First-Day-of-Issue Postmark

Customers have 120 days to obtain the first-day-of-issue postmark by mail. They may purchase new stamps at their local Post Office™ or at The Postal Store® website at [store.usps.com/store/home](https://store.usps.com/store/home). They must affix the stamps to envelopes of their choice, address the envelopes (to them-

selves or others), and place them in a larger envelope addressed to:

FDOI – Women's Soccer Stamp  
USPS Stamp Fulfillment Services  
8300 NE Underground Drive, Suite 300  
Kansas City, MO 64144-9900

After applying the first-day-of-issue postmark, the Postal Service will return the envelopes through the mail. There is no charge for the postmark up to a quantity of 50. There is a 5-cent charge for each additional postmark over 50. All orders must be postmarked by June 16, 2023.

#### How to Order First-Day Covers

The Postal Service also offers first-day covers for new stamp issues and Postal Service stationery items postmarked with the official first-day-of-issue cancellation. Each item has an individual catalog number and is offered in the *USA Philatelic* catalog and online at [store.usps.com/store/home](https://store.usps.com/store/home). Customers may register to receive a free *USA Philatelic* catalog online at [usps.com/philatelic](https://usps.com/philatelic).

**Locally produced items are not authorized. Only merchandise that has been approved and assigned an item number by Headquarters Retail Marketing may be produced and sold.**

Issue:	<i>Women's Soccer</i> Stamp
Item Number:	483000
Denomination & Type of Issue:	First-Class Mail Forever
Format:	Pane of 20 (1 design)
Series:	N/A
Issue Date & City:	February 16, 2023, Orlando, FL 32862
Art Director:	Antonio Alcalá, Alexandria, VA
Designer:	Antonio Alcalá, Alexandria, VA
Artist:	Noah MacMillan (Deceased), Takoma Park, MD
Modeler:	Sandra Lane / Michelle Finn
Manufacturing Process:	Offset, Microprint
Printer:	Banknote Corporation of America
Press Type:	Gallus RCS
Stamps per Pane:	20
Print Quantity:	20,000,000 stamps
Paper Type:	Phosphor, Block Tag
Adhesive Type:	Pressure-sensitive
Colors:	Cyan, Magenta, Yellow, Black
Stamp Orientation:	Horizontal
Image Area (w x h):	1.42 x 0.84 in / 36.068 x 21.336 mm
Overall Size (w x h):	1.56 x 0.98 in / 39.624 x 24.892 mm
Full Pane Size (w x h):	7.24 x 5.92 in / 183.896 x 150.368 mm
Press Sheets Size (w x h):	21.72 x 11.84 in. / 551.69 x 300.74 mm
Plate Size:	120 stamps per revolution
Plate Number:	"B" followed by four (4) single digits
Marginal Markings:	
Front:	Plate number in four corners of the pane
Back:	©2022 USPS • USPS logo • Two barcodes (483000) • Plate position diagram (6) • Promotional text

### Pictorial Postmarks Announcement

As a community service, the Postal Service™ offers pictorial postmarks to commemorate local events celebrated in communities throughout the nation. A list of events for which pictorial postmarks are authorized appears on the following pages. The sponsor of the pictorial postmark appears in italics under the date. Also provided are illustrations of these postmarks.

People attending these local events may obtain the postmark in person at the temporary Post Office™ station established there. Those who cannot attend the event but who wish to obtain the postmark may submit a mail order request. Pictorial postmarks are available only for the dates indicated, and *requests must be postmarked no later than 30 days following the requested pictorial postmark date.*

All requests must include a stamped envelope or postcard bearing at least the minimum First-Class Mail® postage. Items submitted for postmark may not include

postage issued after the date of the requested postmark. Such items will be returned unserved.

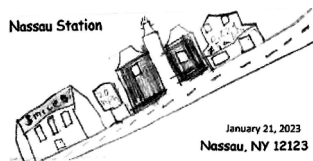
Customers wishing to obtain a postmark must affix stamps to any envelope or postcard of their choice, address the envelope or postcard to themselves or others, insert a card of postcard thickness in envelopes for sturdiness, and tuck in the flap. Place the envelope or postcard in a larger envelope and address it to: Pictorial Postmarks, followed by the Name of the Station, Address, City, State, ZIP+4® Code, as listed next to the postmark.

Customers can also send stamped envelopes and postcards without addresses for postmark, as long as they supply a larger envelope with adequate postage and their return address. After applying the pictorial postmark, the Postal Service returns the items (with or without addresses) under addressed protective cover.

The following pictorial postmark has been extended for 60 days:



December 9, 2022  
*Springfield Area Nativity Theatre Association*  
 Pageant Station  
 Postmaster  
 PO Box 9998  
 Springfield, MN 56087-9998



January 21, 2023  
 United States Postal Service  
 Nassau Station  
 Postmaster  
 10 Fairgrounds Street  
 Nassau, NY 12123-9998



February 1–28, 2023  
*Valentine Remailing Program*  
 Valentine Station  
 Postmaster  
 446 East 29th Street  
 Loveland, CO 80538-9998



January 23, 2023  
 United States Postal Service  
 Pony Express Station  
 Postmaster  
 225 South Val Vista Drive  
 Gilbert, AZ 85296-9998

— Stamp Services,  
 Marketing, 1-12-23

## How to Order the First-Day-of-Issue Digital Color or Traditional Postmarks

Customers have 120 days to obtain the first-day-of-issue postmarks by mail. Each cover must have sufficient postage to meet First-Class Mail® requirements. Customers may purchase new stamps at their local Post Office™, by phone at 844-737-7826, or on The Postal Store® website at [usps.com/shop](https://usps.com/shop).

### Digital Color Postmarks

Only select stamp issues offer a digital color postmark. Customers may submit #6 or #10 envelopes constructed of paper rated as “laser safe.” The Postal Service™ recommends envelopes of 80-pound Accent Opaque, acid-free, 9/16-inch side seams with no glue on the flap. The maximum size of all digital color postmarks is 2 inches (vertically) by 4 inches (horizontally). Allow sufficient space on the envelope to accommodate the postmark. Do not use self-adhesive labels for addresses on the envelope. Two test envelopes must be included. There is a minimum of 10 envelopes at 50 cents per postmark required at the time of servicing. Customers must submit a check, money order, or credit card for payment.

The Postal Service reserves the right to not accept hand-painted and other cachet envelopes that are not compatible with our digital color postmark equipment. The Postal Service also reserves the right to substitute traditional black rubber postmarks if use of nonspecified envelopes results in poor image quality or damage to equipment.

Customers must affix the stamps to the envelopes and address them to themselves or others for return through the mail. Or, they may include an additional self-addressed return envelope, large enough to accommodate their canceled items, with sufficient postage affixed for return of

their postmarked items. Address customer requests for digital color postmarks to:

FDOI – (Name of Stamp Issue)  
USPS Stamp Fulfillment Services  
8300 NE Underground Drive, Suite 300  
Kansas City, MO 64144-9900

After applying the first-day-of-issue postmark, the Postal Service will return the envelopes to the customer by U.S. Mail®.

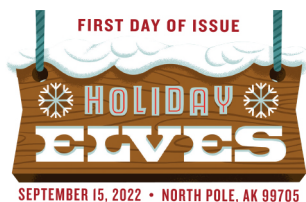
### Traditional Postmarks

Customers must affix the stamps to the envelopes and address them to themselves or others for return through the mail. Or, they may include an additional self-addressed return envelope, large enough to accommodate their canceled items, with sufficient postage affixed for return of their postmarked items. Address customer requests for traditional postmarks to:

FDOI – (Name of Stamp Issue)  
USPS Stamp Fulfillment Services  
8300 NE Underground Drive, Suite 300  
Kansas City, MO 64144-9900

After applying the first-day-of-issue postmark, the Postal Service will return the envelopes to the customer by U.S. Mail. There is no charge for the first 50 postmarks. There is a 5-cent charge for each additional postmark over 50. Customers must submit a check, money order, or credit card for payment.

Locally produced items are not authorized. Only merchandise that has been approved and assigned an item number by Headquarters Retail Marketing may be produced and sold.



Digital Color Pictorial

### FDOI – Holiday Elves Stamps

USPS Stamp Fulfillment Services  
8300 NE Underground Drive, Suite 300  
Kansas City, MO 64144-9900

January 15, 2023



Black and White Pictorial

### FDOI – Holiday Elves Stamps

USPS Stamp Fulfillment Services  
8300 NE Underground Drive, Suite 300  
Kansas City, MO 64144-9900

January 15, 2023



**FDI – Virgin and Child Stamp**  
USPS Stamp Fulfillment Services  
8300 NE Underground Drive, Suite 300  
Kansas City, MO 64144-9900

January 22, 2023

**Digital Color Pictorial**



**FDI – Virgin and Child Stamp**  
USPS Stamp Fulfillment Services  
8300 NE Underground Drive, Suite 300  
Kansas City, MO 64144-9900

January 22, 2023

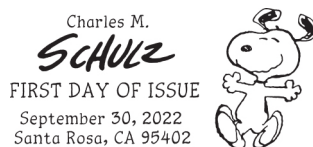
**Black and White Pictorial**



**FDI – Charles M. Schulz Stamps**  
USPS Stamp Fulfillment Services  
8300 NE Underground Drive, Suite 300  
Kansas City, MO 64144-9900

January 30, 2023

**Digital Color Pictorial**



**FDI – Charles M. Schulz Stamps**  
USPS Stamp Fulfillment Services  
8300 NE Underground Drive, Suite 300  
Kansas City, MO 64144-9900

January 30, 2023

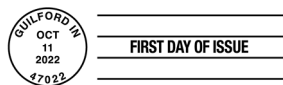
**Black and White Pictorial**



**FDI – Snowy Beauty Stamps**  
USPS Stamp Fulfillment Services  
8300 NE Underground Drive, Suite 300  
Kansas City, MO 64144-9900

February 11, 2023

**Digital Color Pictorial**



**FDI – Snowy Beauty Stamps**  
USPS Stamp Fulfillment Services  
8300 NE Underground Drive, Suite 300  
Kansas City, MO 64144-9900

February 11, 2023

**Black and White Pictorial**



**FDI – Kwanzaa 2022 Stamp**  
USPS Stamp Fulfillment Services  
8300 NE Underground Drive, Suite 300  
Kansas City, MO 64144-9900

February 13, 2023

**Digital Color Pictorial**

**FDOI – Kwanzaa 2022 Stamp**

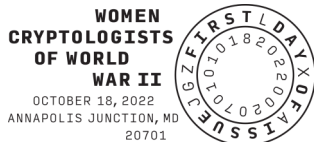
USPS Stamp Fulfillment Services  
8300 NE Underground Drive, Suite 300  
Kansas City, MO 64144-9900

February 13, 2023

**Black and White Pictorial****FDOI – Women Cryptologists of World War II Stamp**

USPS Stamp Fulfillment Services  
8300 NE Underground Drive, Suite 300  
Kansas City, MO 64144-9900

February 18, 2023

**Digital Color Pictorial****FDOI – Women Cryptologists of World War II Stamp**

USPS Stamp Fulfillment Services  
8300 NE Underground Drive, Suite 300  
Kansas City, MO 64144-9900

February 18, 2023

**Black and White Pictorial****FDOI – Hanukkah 2022 Stamp**

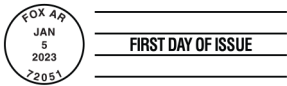
USPS Stamp Fulfillment Services  
8300 NE Underground Drive, Suite 300  
Kansas City, MO 64144-9900

February 20, 2023

**Digital Color Pictorial****FDOI – Hanukkah 2022 Stamp**

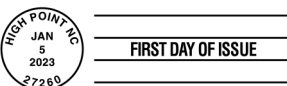
USPS Stamp Fulfillment Services  
8300 NE Underground Drive, Suite 300  
Kansas City, MO 64144-9900

February 20, 2023

**Black and White Pictorial****FDOI – Red Fox Stamp**

USPS Stamp Fulfillment Services  
8300 NE Underground Drive, Suite 300  
Kansas City, MO 64144-9900

May 5, 2023

**Black and White Pictorial****FDOI – School Bus Stamp**

USPS Stamp Fulfillment Services  
8300 NE Underground Drive, Suite 300  
Kansas City, MO 64144-9900

May 5, 2023

**Black and White Pictorial**





**FDOI – Lunar New Year: Year of the Rabbit Stamp**

USPS Stamp Fulfillment Services  
8300 NE Underground Drive, Suite 300  
Kansas City, MO 64144-9900

May 12, 2023

**Digital Color Pictorial**



**FDOI – Lunar New Year: Year of the Rabbit Stamp**

USPS Stamp Fulfillment Services  
8300 NE Underground Drive, Suite 300  
Kansas City, MO 64144-9900

May 12, 2023

**Black and White Pictorial**



**FDOI – Love 2023 Stamps**

USPS Stamp Fulfillment Services  
8300 NE Underground Drive, Suite 300  
Kansas City, MO 64144-9900

May 19, 2023

**Digital Color Pictorial**



**FDOI – Love 2023 Stamps**

USPS Stamp Fulfillment Services  
8300 NE Underground Drive, Suite 300  
Kansas City, MO 64144-9900

May 19, 2023

**Black and White Pictorial**

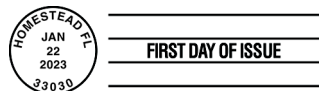


**FDOI – Florida Everglades Stamp**

USPS Stamp Fulfillment Services  
8300 NE Underground Drive, Suite 300  
Kansas City, MO 64144-9900

May 22, 2023

**Digital Color Pictorial**



**FDOI – Florida Everglades Stamp**

USPS Stamp Fulfillment Services  
8300 NE Underground Drive, Suite 300  
Kansas City, MO 64144-9900

May 22, 2023

**Black and White Pictorial**

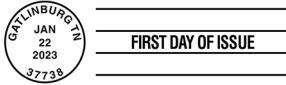


Digital Color Pictorial

**FDOI – Great Smoky Mountains Stamp**

USPS Stamp Fulfillment Services  
8300 NE Underground Drive, Suite 300  
Kansas City, MO 64144-9900

May 22, 2023



Black and White Pictorial

**FDOI – Great Smoky Mountains Stamp**

USPS Stamp Fulfillment Services  
8300 NE Underground Drive, Suite 300  
Kansas City, MO 64144-9900

May 22, 2023



Digital Color Pictorial

**FDOI – Ernest J. Gaines Stamp**

USPS Stamp Fulfillment Services  
8300 NE Underground Drive, Suite 300  
Kansas City, MO 64144-9900

May 23, 2023



Black and White Pictorial

**FDOI – Ernest J. Gaines Stamp**

USPS Stamp Fulfillment Services  
8300 NE Underground Drive, Suite 300  
Kansas City, MO 64144-9900

May 23, 2023



Digital Color Pictorial

**FDOI – Women's Soccer Stamp**

USPS Stamp Fulfillment Services  
8300 NE Underground Drive, Suite 300  
Kansas City, MO 64144-9900

June 16, 2023



Black and White Pictorial

**FDOI – Women's Soccer Stamp**

USPS Stamp Fulfillment Services  
8300 NE Underground Drive, Suite 300  
Kansas City, MO 64144-9900

June 16, 2023

## Supply Management

### Interest Rate on Contract Claims

The Postal Service™ periodically publishes the interest rate payable on a claim decided in a supplier's favor under the Contract Disputes Act of 1978 in the *Postal Bulletin*. This rate also applies for late payments to suppliers under the Prompt Payment Act, as amended. The interest rate effective for the 6-month period of January 1 to June 30, 2023, is 4.625 percent.

— *Supply Management Infrastructure,  
Supply Management, 1-12-23*

# Send Warmth and Cheer in Winter with ***Snowy Beauty*** Forever® Stamps



**ON SALE NATIONWIDE: OCTOBER 11, 2022**

