

Postal Bulletin

Published Since March 4, 1880

December 29, 2022

PB 22614



Ready for Return Season

USPS Makes Returns Easy

See page 3

Contents

COVER STORY

USPS is Ready for the Holiday Returns Season 3

POLICIES, PROCEDURES, AND FORMS UPDATES

Manuals

DMM Revision: New Mailing Standards for Domestic Mailing Services Products 5
 IMM Revision: Indemnity Limit for International Registered Mail Service 7

Handbooks

Handbook F-15 Revision: Travel Per Diem Rates 8

Publications

Publication 431 Revision: Changes to Post Office Box Service and Caller Service Fee Groups 8

ORGANIZATION INFORMATION

Environmental Management

Used Battery Disposal Requirements 10

Finance

Equipment Maintenance Allowance Schedule for Rural Routes 10
 Reminder: International Reply Coupons (Return Dates: January 1 – 31, 2023). 33

Information Security

Become a CyberSafe Guardian 34

International Mail

Price Changes and Minor Classification Changes for International Mailing Services 35

Stamp Services

Stamp Announcement 23-7: Florida Everglades Stamp 36
 Stamp Announcement 23-8: Great Smoky Mountains Stamp 37
 Correction: Pictorial Postmarks Announcement 38
 Update: Stamp Announcement 23-2: School Bus Stamp 38

Update: Stamp Announcement 23-6: Ernest J. Gaines Stamp 38
 How to Order the First-Day-of-Issue Digital Color or Traditional Postmarks 39

PULL-OUT INFORMATION

Fraud

Invalid USPS Corporate Account Numbers 13
 Missing, Lost, or Stolen U.S. Money Order Forms 15
 Missing, Lost, or Stolen Canadian Money Order Forms 21
 Verifying U.S. Postal Service Money Orders 23
 Counterfeit Canadian Money Order Forms 23
 Toll-Free Number Available to Verify Canadian Money Orders 23

Other Information

Overseas Military/Diplomatic Mail 25
 Freely Associated States Restrictions 32

POSTAL BULLETIN 2022 SEMI-ANNUAL INDEX

2022 Semi-Annual Index PB 22604 (8-11-22)

Find the latest in mail and delivery information and services offered by U.S. Postal® in the *Postal Bulletin* at about.usps.com/postal-bulletin

Mail Moment®

Cover Story

USPS is Ready for the Holiday Returns Season

The United States Postal Service® (USPS®) continues to make improvements to its returns infrastructure to prepare for the annual season of holiday returns. As the number of items ordered online and shipped to consumers grows, so will the demand for easy, convenient return methods that attract repeat business.

USPS is ready for the returns season in the following ways:

- **Continued expansion of our returns processing capabilities.** A total of 13,023 active Parcel Return Service (PRS) Return Delivery Units and 174 Return Sectional Center Facilities across the country are available for picking up packages. This additional processing space helps USPS handle the volume and positions us as the returns shipping provider of choice in a crowded market.
- **It's easier for businesses to insure returns with USPS.** Insurance is available for all return products up to \$5,000.
- **Offering one universal shipping permit.** To streamline shippers needs, we have one universal shipping permit that covers Parcel Return Service, USPS Returns®, and outbound products.
- **Handling unpackaged returns.** At over 18,000 participating retail locations, postal associates will assist customers with their unpackaged return items. Customers simply present a QR Code or a Label Broker ID code and USPS can complete the return transaction.
- **Returns Dashboard.** USPS developed an internal tool that enhances the ability to monitor returns and drive performance.
- **Expanded PRS locations.** To improve PRS returns, there are now 376 additional PRS access point locations.
- **Priority Mail® returns now include \$100 insurance.** Adding this standard feature provides coverage for lost, damaged, and missing return claims via the indemnity process.
- **Return labels printed at Self-Service Kiosks (SSKs).** Deployment of SSKs has begun already in Wyoming and will roll out in phases throughout 2023.

How to Get Return Labels

Return labels can either be included in the customer's original order or requested through a merchant. Customers then affix return labels to the package and send it using one of the following options:

- Take it to one of more than 31,000 Post Offices nationwide.
- Drop it in one of more than 140,000 collection boxes (packages must meet aviation mail security guidelines).
- Schedule a Package Pickup at usps.com — pick-ups are available for 44,422 ZIP Codes.

USPS Returns Application Programming Interface

Customers can receive USPS Returns service labels for First-Class Package Returns®, Priority Mail Returns®, and Ground Returns for free through the USPS Returns Application Programming Interface (API). These labels are processed using the new automated returns system in USPS Ship. USPS Returns service account holders are responsible for paying the postage and fees through an Enterprise Payment System (EPS) account. An EPS account ensures that items can be returned, at no charge to customers, using merchant-provided USPS Returns service labels.

For more information about USPS Returns service:

- See [federalregister.gov/documents/2020/02/25/2020-03170/usps-returns-service](https://www.federalregister.gov/documents/2020/02/25/2020-03170/usps-returns-service) for program details
- See usps.com/business/web-tools-apis for USPS Web Tools Returns Label API onboarding, technical documentation, and features.

Merchant Return Options

Businesses that create their own return labels may also distribute them to customers via the Label Broker®. Designed for customers without a printer, the Label Broker allows merchants to store labels in a secure USPS repository. Customers may then print labels at their local Post Office® or at usps.com. For more information about the Label Broker, see usps.com/business/label-broker.htm.

The Postal Service also offers other options to help businesses create and deliver return labels to their customers. Businesses that use First-Class Package Returns, Priority Mail Returns, Ground Returns, or Parcel Returns services can generate labels for their customers through the easy-to-use label generation tool, Merchant Returns Application.

On their own or with the help of merchant agents, customers can:

- Generate a ready-to-use return label.
- Print the label or have the label emailed to them for printing.
- Schedule a Package Pickup:
 - Directly on the Merchant Returns web page; or
 - Scan a QR code at the bottom of the label.
- Locate the nearest Post Office:
 - Use the PO Locator on usps.com; or
 - Scan a QR code at the bottom of the printed label.

Merchant Returns Application

Customers can use the Merchant Returns Application in the following ways:

- A link on the merchant website directs consumers to the USPS Returns customer page to create labels.
- Merchant agents use USPS Returns to generate and send labels to customers.

- Merchants integrate with the USPS Merchant Returns API to generate labels.

By providing their address, shipping information, and choice in label delivery via a printable PDF, a pop-up window, or an email message, customers can generate labels at merchant custom-look pages, specifically tailored to fit the merchant's needs and products.

For more information on enhancing business websites with the Merchant Returns API, see the Merchant Returns API User's Guide at postalpro.usps.com/node/2722?_gl=1*1if35cm*_ga*ZmFsc2U.*_ga_3NXP3C8S9V*MTYzNzAwMzE5Mi43OC4xLjE2Mzcx-MDM4NzguMA.

Delivering for America with USPS Returns — expect even more enhancements in 2023.

— *Shipping and Commerce Product Management,
Business Solutions, 12-29-22*

Policies, Procedures, and Forms Updates

Manuals

DMM Revision: New Mailing Standards for Domestic Mailing Services Products

Effective January 22, 2023, the Postal Service™ will revise *Mailing Standards of the United States Postal Service, Domestic Mail Manual (DMM®)*, in various sections, to reflect changes regarding Postal Service domestic product price adjustments for 2023.

On November 28, 2022, the Postal Regulatory Commission (PRC) found that price adjustments proposed by the Postal Service may take effect as planned. The price adjustments and these DMM revisions will become effective on January 22, 2023. Information on final prices is available under Docket No. R2023-1 (Order No. 6341) on the PRC website at prc.gov.

Mailing Standards of the United States Postal Service, Domestic Mail Manual (DMM)

* * * * *

500 Additional Mailing Services

503 Extra Services

1.0 Basic Standards for All Extra Services

* * * * *

1.7 Forms and Labels

* * * * *

[Add new 1.7.5 to read as follows:]

1.7.5 Legacy Extra-Service Forms

Certain legacy extra-service forms are no longer valid. They have been replaced with IMpb-compliant versions that have a tracking number beginning with “92” or higher. Mailers using noncompliant versions of the following extra-service forms will be subject to the IMpb noncompliance fee (see Notice 123 — *Price List*):

- a. PS Form 153, *Signature Confirmation*.
- b. PS Form 3800, *Certified Mail*.
- c. PS Form 3813, *Insured Mail Receipt — Domestic Only — \$500 and Under*.
- d. PS Form 3813-P, *Insured Mail Receipt — Domestic Only — Over \$500*.

* * * * *

507 Mailer Services

Overview

* * * * *

[Revise the title and text of 8.0 to read as follows:]

8.0 Address Management System

8.1 Address Management System Products and Fees

For Address Management System (AMS) products and fees, see Notice 123 — *Price List*.

8.1.1 Carrier Route Information System

The official city delivery scheme, “Carrier Route Information System,” is available to mailers.

8.1.2 Address Changes to Election Boards and Voter Registration Commissions

For the designated fee, USPS provides address changes to election boards and voter registration commissions.

8.2 Election Boards and Voter Registration Commissions

8.2.1 General

Election boards or voter registration commissions may use the “Return Service Requested” endorsement and/or the National Change of Address Linkage System (NCOA^{Link}) to maintain current address lists.

8.2.2 Fee Assessment

The fee for address changes provided to election boards and voter registration commissions is assessed for each PS Form 3575 submitted. The fee is collected on a per-card basis regardless of the number of changes made on the card and whether the change concerns a person on the board or commission’s list of registrants. USPS may supply facsimiles of the forms or copies of the information they contain at no additional fee.

8.2.3 Procedure

Election boards or voter registration commissions using permanent registration information may obtain residential change-of-address information from PS Forms 3575 as follows:

- a. An authorized official of the board or commission must sign and submit to the manager, Address Management Systems (district), a written request that lists the Post Offices for which change-of-address information is desired.

- b. If the request is approved, an agreement must be obtained from and signed by an authorized official of the board or commission detailing the terms under which the change-of-address information is to be released.
- c. The board or commission receives the requested information from the postmasters of the listed Post Offices and pays those postmasters the applicable fees.

* * * * *

700 Special Standards

* * * * *

705 Advanced Preparation and Special Postage Payment Systems

* * * * *

8.0 Preparing Pallets

* * * * *

8.10 Pallet Presort and Labeling

* * * * *

8.10.3 USPS Marketing Mail or Parcel Select Lightweight — Bundles, Sacks, or Trays

* * * * *

[Add new item d. to read as follows and renumber current items d. through h. as items e. through i.]

- d. 5-digit, required except for trays, permitted for bundles, sacks, and trays. The pallet must contain only automation-price and/or Presorted-price mail for the same 5-digit ZIP Code or same 5-digit scheme. 5-digit scheme bundles and sacks are assigned to 5-digit pallets according to the “label to” 5-digit ZIP Code. Labeling:

1. Line 1: City, state, and 5-digit ZIP Code destination. (See 8.6.4c for overseas military mail.)

2. Line 2: For flats and irregular parcels, “STD” followed by “FLTS” or “IRREG,” as applicable; followed by “5D”; followed by “BARCODED” (or “BC”) if the pallet contains automation-price mail; followed by “NONBARCODED” (or “NBC”) if the pallet contains Presorted-price mail. For letters, “STD LTRS 5D”; followed by “BC” if the pallet contains barcoded letters; followed by “MACH” if the pallet contains machinable letters; followed by “MAN” if the pallet contains nonmachinable letters.

* * * * *

[Revise the introductory text of renumbered 8.10.3f to read as follows:]

- e. SCF, required, permitted for bundles, sacks, and trays. The pallet may contain carrier route, automation-price, and/or Presorted-price mail for the 3-digit ZIP Code groups in L005, or L051 for Parcel Select Lightweight sacks. Mailers may, at their option, place AADC trays on SCF pallets when the tray’s “label to” 3-digit ZIP Code (from L801) is within that SCF’s service area. Mailers may also, at their option, place mixed ADC or mixed AADC trays, labeled per L010, on an SCF pallet entered at the SCF facility responsible for processing mixed ADC or mixed AADC trays for that NDC/ASF facility. The SCF pallet discount applies to 3-digit, 5-digit, carrier-route, High-Density, High-Density-Plus, and Saturation (including EDDM — Not Retail) USPS Marketing Mail flat-shaped pieces on an SCF pallet entered at an Origin (None), DNDC, or DSCF entry. The SCF pallet discount does not apply to Marketing Mail letters or parcels. Labeling:***

* * * * *

The Postal Service will incorporate these revisions into the January 22, 2023, edition of the online DMM, which is available via Postal Explorer® at pe.usps.com.

— Product Classification,
Product Solutions, 12-29-22

IMM Revision: Indemnity Limit for International Registered Mail Service

Effective January 1, 2023, the Postal Service™ will revise the following sections in *Mailing Standards of the United States Postal Service*, International Mail Manual (IMM®) to reflect the annual change to the indemnity limit for international Registered Mail™ items:

- Section 333.2.
- Section 934.2.
- The Individual Country Listing for each country that offers Registered Mail service.

Mailing Standards of the United States Postal Service, International Mail Manual (IMM)

* * * * *

3 Extra Services

* * * * *

330 Registered Mail

* * * * *

333 Fees and Indemnity Limits

* * * * *

333.2 Indemnity Limit

[Revise the text to read as follows, reflecting a change in the indemnity limit to \$40.87:]

Regardless of the declared value of a registered item, the maximum amount of indemnity payable for loss, damage, or missing contents is \$40.87.

* * * * *

9 Inquiries, Indemnities, and Refunds

* * * * *

930 Indemnity Payments

* * * * *

934 Payments for Registered Mail

* * * * *

934.2 Special Provisions

[Revise the text to read as follows, reflecting a change in the indemnity limit to \$40.87:]

Regardless of the declared value of a registered item, the maximum amount of indemnity payable for loss, damage, or missing contents is \$40.87.

* * * * *

Individual Country Listings

* * * * *

Extra Services

* * * * *

Registered Mail (330)

* * * * *

[For every country that offers Registered Mail service in the “Extra Services” section, revise the maximum indemnity limit to \$40.87, to read as follows:]

Maximum Indemnity: \$40.87

* * * * *

Although effective January 1, 2023, the Postal Service will incorporate these revisions into the next edition of the online IMM, which is available via Postal Explorer® at pe.usps.com.

Handbooks

Handbook F-15 Revision: Travel Per Diem Rates

Effective November 7, 2022, the Postal Service™ revised Handbook F-15, *Travel and Relocation*, to update the travel per diem rates listed in Appendix A.

Handbook F-15, *Travel and Relocation*

* * * * *

Appendix A – Rates

* * * * *

A-2 Travel Per Diem Rates

[Revise the last paragraph to read as follows (removing the table):]

The per diem rate for Norman, Oklahoma, is the current standard location daily rate established by GSA. Effective November 7, 2022, the deductions for meals provided will

match GSA-established standard location amounts as published on its website at gsa.gov/travel/plan-book/per-diem-rates.

* * * * *

The Postal Service will incorporate this revision into the next edition of Handbook F-15, which is available on the PolicyNet website:

- Go to blue.usps.gov.
- In the left-hand column, click *Essential Links*, and then click *PolicyNet*.
- Go to the right-hand side under “Published Forms and Directives.”
- Click *Handbooks*.

The direct URL for the Postal Service PolicyNet website is blue.usps.gov/cpim.

– Corporate Accounting, Controller, 12-29-22

Publications

Publication 431 Revision: Changes to Post Office Box Service and Caller Service Fee Groups

Effective December 29, 2022, Publication 431, *Post Office Box Service and Caller Service Fee Groups*, is revised to include the following changes.

Publication 431, *Post Office Box Service and Caller Service Fee Groups*

* * * * *

[Delete the following entries:]

ZIP Code	Fee Group
46110	4

* * * * *

The online version of Publication 431 is dated July 2013. Publication 431 is currently available on the Postal Service™ PolicyNet website (blue.usps.gov/cpim):

- Go to blue.usps.gov.
- In the left-hand column, click *Essential Links*, and then click *PolicyNet*.
- Go to the right-hand side under “Published Forms and Directives.”
- Click *Publications*.

Offices with WebBATS Manager/Supervisor access can view current Publication 431 information by going to the WebBATS Edit Facility Information page, as follows:

1. Go to the WebBATS main menu, and select Utility> Facility>Edit Facility option.
2. View the Fee Group field on the Edit Facility Information page.

– Post Office Operations,
Retail and Post Office Operations, 12-29-22

Celebrate Vibrant Music and Culture with *Mariachi* Forever® Stamps



ON SALE NATIONWIDE:
JULY 15, 2022
Sold as a full pane.

Organization Information

Environmental Management

Used Battery Disposal Requirements

Most used batteries contain hazardous components and cannot be disposed of in the trash. These batteries are typically regulated as Universal Waste and are subject to strict management requirements. Examples of regulated Universal Waste include spent or inoperable batteries from mobile scanners, phones, laptops, and other electronic equipment.

USPS® sites must recycle Universal Waste batteries using the following services provided by Cleanlites Recycling, Inc. (on eBuy+):

- **Mailback services.** Waste batteries must only be shipped via FedEx, using the appropriate Cleanlites “LampMaster” recycling kits.

- **Direct or on-site pickup services.** Sites with large quantities of Universal Waste batteries can schedule a direct pickup.

Important: Do *NOT* send waste batteries through the mail to the Atlanta Mail Recovery Center, Ybor City Processing and Distribution Center (Tampa Logistics and Distribution Center), or the Topeka Material Distribution Center.

Additionally, USPS employees must follow the appropriate handling, storage, and disposal procedures for each used battery type (see table).

Used Battery Type	Waste Classification	Recycling Method
Alkaline batteries	Non-hazardous Waste	Recycle through a local recycling center or through Cleanlites' recycling service on eBuy+. When recycling is impractical, alkaline batteries can be disposed of in the trash.
Small non-alkaline dry cell batteries and small sealed lead-acid batteries	Universal Waste	Recycle through Cleanlites' recycling service on eBuy+.
Large lead-acid batteries	Not classified as Universal Waste (or Hazardous Waste) if they are reclaimed/recycled.	Arrange pickup of vehicular lead-acid batteries through the facility's vehicle battery supplier and pickup of industrial lead-acid batteries through EnerSys® Inc.

For more information about used battery disposal and recycling:

- Send questions to your designated environmental contact at blue.usps.gov/sustainability/contact.htm.
- Review the guidance from *Environmental Compliance Bulletin: Used Batteries* at

blue.usps.gov/sustainability/environmental/_pdf/waste/ecb-used-batteries.pdf.

- Visit the Environmental Affairs battery recycling site at blue.usps.gov/sustainability/battery-recycling.htm.

— *Environmental Affairs and Corporate Sustainability, Corporate Affairs, 12-29-22*

Finance

Equipment Maintenance Allowance Schedule for Rural Routes

Rural Carriers

In accordance with the provisions of Article 9, Section 2.J.3 of Handbook EL-902, *Agreement Between the United States Postal Service and the National Rural Letter Carriers' Association*, effective December 31, 2022 (pay period 02-23), the equipment maintenance allowance (EMA) will decrease to 93.5 cents per mile. The EMA is 93.5 cents per mile, or a minimum of \$37.40 per day, whichever is greater.

2.J.5, receive an EMA of 93.5 cents per mile or \$9.95 per hour, whichever is greater. This EMA must not exceed the amount provided in the special equipment maintenance allowance for the route stops and miles.

EMA Rate Schedule

The EMA rate schedule on pages [11](#) and [12](#) supersedes all previously published EMA schedules for employees receiving EMA.

Auxiliary Rural Carriers, Rural Carrier Reliefs, Rural Carrier Associates, Rural Carrier Part-Time Flexibles, and Auxiliary Assistance

Employees providing auxiliary assistance or serving auxiliary routes under the provisions of Article 9, Section

— *Collective Bargaining and Arbitration, Labor Relations, 12-29-22*

EMA Rate Schedule (page 2 of 2)

USPS 26-9902
MINNEAPOLIS ISC
REPORT AAQ530F1

RURAL EQUIPMENT MAINTENANCE
BASED ON \$0.935 PER MILE

R A T E S C H E D U L E
EFFECTIVE PP-YR 02-23

DATE 12-15-22
PAGE 2

MILES STOPS = *0640**0660**0680**0700**0720**0740**0760**0780**0800**0820**0840**0860**0880**0900**0920**0940**0960**0980**1000

8	38.90	39.00	39.10	39.20	39.30	39.40	39.50	39.60	39.70	39.80	39.90	40.00	40.10	40.20	40.30	40.40	40.50	40.60	40.70
9	39.00	39.10	39.20	39.30	39.40	39.50	39.60	39.70	39.80	39.90	40.00	40.10	40.20	40.30	40.40	40.50	40.60	40.70	40.80
10	39.10	39.20	39.30	39.40	39.50	39.60	39.70	39.80	39.90	40.00	40.10	40.20	40.30	40.40	40.50	40.60	40.70	40.80	40.90
11	39.20	39.30	39.40	39.50	39.60	39.70	39.80	39.90	40.00	40.10	40.20	40.30	40.40	40.50	40.60	40.70	40.80	40.90	41.00
12	39.30	39.40	39.50	39.60	39.70	39.80	39.90	40.00	40.10	40.20	40.30	40.40	40.50	40.60	40.70	40.80	40.90	41.00	41.10
13	39.40	39.50	39.60	39.70	39.80	39.90	40.00	40.10	40.20	40.30	40.40	40.50	40.60	40.70	40.80	40.90	41.00	41.10	41.20
14	39.50	39.60	39.70	39.80	39.90	40.00	40.10	40.20	40.30	40.40	40.50	40.60	40.70	40.80	40.90	41.00	41.10	41.20	41.30
15	39.60	39.70	39.80	39.90	40.00	40.10	40.20	40.30	40.40	40.50	40.60	40.70	40.80	40.90	41.00	41.10	41.20	41.30	41.40
16	39.70	39.80	39.90	40.00	40.10	40.20	40.30	40.40	40.50	40.60	40.70	40.80	40.90	41.00	41.10	41.20	41.30	41.40	41.50
17	39.80	39.90	40.00	40.10	40.20	40.30	40.40	40.50	40.60	40.70	40.80	40.90	41.00	41.10	41.20	41.30	41.40	41.50	41.60
18	39.90	40.00	40.10	40.20	40.30	40.40	40.50	40.60	40.70	40.80	40.90	41.00	41.10	41.20	41.30	41.40	41.50	41.60	41.70
19	40.00	40.10	40.20	40.30	40.40	40.50	40.60	40.70	40.80	40.90	41.00	41.10	41.20	41.30	41.40	41.50	41.60	41.70	41.80
20	40.10	40.20	40.30	40.40	40.50	40.60	40.70	40.80	40.90	41.00	41.10	41.20	41.30	41.40	41.50	41.60	41.70	41.80	41.90
21	40.20	40.30	40.40	40.50	40.60	40.70	40.80	40.90	41.00	41.10	41.20	41.30	41.40	41.50	41.60	41.70	41.80	41.90	42.00
22	40.30	40.40	40.50	40.60	40.70	40.80	40.90	41.00	41.10	41.20	41.30	41.40	41.50	41.60	41.70	41.80	41.90	42.00	42.10
23	40.40	40.50	40.60	40.70	40.80	40.90	41.00	41.10	41.20	41.30	41.40	41.50	41.60	41.70	41.80	41.90	42.00	42.10	42.20
24	40.50	40.60	40.70	40.80	40.90	41.00	41.10	41.20	41.30	41.40	41.50	41.60	41.70	41.80	41.90	42.00	42.10	42.20	42.30
25	40.60	40.70	40.80	40.90	41.00	41.10	41.20	41.30	41.40	41.50	41.60	41.70	41.80	41.90	42.00	42.10	42.20	42.30	42.40
26	40.70	40.80	40.90	41.00	41.10	41.20	41.30	41.40	41.50	41.60	41.70	41.80	41.90	42.00	42.10	42.20	42.30	42.40	42.50
27	40.80	40.90	41.00	41.10	41.20	41.30	41.40	41.50	41.60	41.70	41.80	41.90	42.00	42.10	42.20	42.30	42.40	42.50	42.60
28	40.90	41.00	41.10	41.20	41.30	41.40	41.50	41.60	41.70	41.80	41.90	42.00	42.10	42.20	42.30	42.40	42.50	42.60	42.70
29	41.00	41.10	41.20	41.30	41.40	41.50	41.60	41.70	41.80	41.90	42.00	42.10	42.20	42.30	42.40	42.50	42.60	42.70	42.80
30	41.10	41.20	41.30	41.40	41.50	41.60	41.70	41.80	41.90	42.00	42.10	42.20	42.30	42.40	42.50	42.60	42.70	42.80	42.90
31	41.20	41.30	41.40	41.50	41.60	41.70	41.80	41.90	42.00	42.10	42.20	42.30	42.40	42.50	42.60	42.70	42.80	42.90	43.00
32	41.30	41.40	41.50	41.60	41.70	41.80	41.90	42.00	42.10	42.20	42.30	42.40	42.50	42.60	42.70	42.80	42.90	43.00	43.10
33	41.40	41.50	41.60	41.70	41.80	41.90	42.00	42.10	42.20	42.30	42.40	42.50	42.60	42.70	42.80	42.90	43.00	43.10	43.20
34	41.50	41.60	41.70	41.80	41.90	42.00	42.10	42.20	42.30	42.40	42.50	42.60	42.70	42.80	42.90	43.00	43.10	43.20	43.30
35	41.60	41.70	41.80	41.90	42.00	42.10	42.20	42.30	42.40	42.50	42.60	42.70	42.80	42.90	43.00	43.10	43.20	43.30	43.40
36	41.70	41.80	41.90	42.00	42.10	42.20	42.30	42.40	42.50	42.60	42.70	42.80	42.90	43.00	43.10	43.20	43.30	43.40	43.50
37	41.80	41.90	42.00	42.10	42.20	42.30	42.40	42.50	42.60	42.70	42.80	42.90	43.00	43.10	43.20	43.30	43.40	43.50	43.60
38	41.90	42.00	42.10	42.20	42.30	42.40	42.50	42.60	42.70	42.80	42.90	43.00	43.10	43.20	43.30	43.40	43.50	43.60	43.70
39	42.00	42.10	42.20	42.30	42.40	42.50	42.60	42.70	42.80	42.90	43.00	43.10	43.20	43.30	43.40	43.50	43.60	43.70	43.80
40	42.10	42.20	42.30	42.40	42.50	42.60	42.70	42.80	42.90	43.00	43.10	43.20	43.30	43.40	43.50	43.60	43.70	43.80	43.90
41	42.20	42.30	42.40	42.50	42.60	42.70	42.80	42.90	43.00	43.10	43.20	43.30	43.40	43.50	43.60	43.70	43.80	43.90	44.00
42	42.30	42.40	42.50	42.60	42.70	42.80	42.90	43.00	43.10	43.20	43.30	43.40	43.50	43.60	43.70	43.80	43.90	44.00	44.10
43	42.40	42.50	42.60	42.70	42.80	42.90	43.00	43.10	43.20	43.30	43.40	43.50	43.60	43.70	43.80	43.90	44.00	44.10	44.20

Pull-Out Information

Fraud

Invalid USPS Corporate Account Numbers

Provide this listing to Contract Postal Units and acceptance clerks in non-POS locations without intranet access to validate a USPS Corporate Account (USPSCA) number online. For all other locations, online USPSCA validation is preferred. This list supersedes all previous notices, which you must recycle.

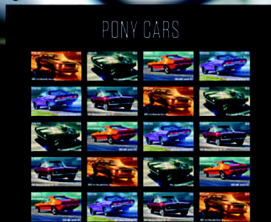
Acceptance clerks must not accept Priority Mail Express® shipments bearing an invalid USPSCA number in the “Payment by Account” or “Agreement Number” section of the label or form.

Note: The first 6 digits of a 9-digit Custom Designed Service and Next Day Pickup Agreement make up the Corporate Account Number.

005691	070174	142203	337394	381529	559030	920111	940357	941432	950305	951546	980232	982386
008392	076880	142272	340640	381543	601194	921429	940386	941596	950319	951570	980404	982425
008702	077498	142822	366005	381619	601351	921613	940480	941721	950512	951623	980418	982427
009765	077779	152668	370005	381798	601872	921619	940488	941729	950692	951637	980461	982446
015759	080323	152702	370007	381898	604333	921730	940490	941850	950757	951784	980501	982480
016636	080632	191396	372274	386061	672526	921747	940516	941879	950804	951848	980542	982505
018005	080648	197020	372884	400063	701951	921790	940529	941923	950816	951875	980664	983045
018339	080714	198160	373004	436110	730068	921855	940535	941987	950847	951924	980671	983056
019521	095816	221361	374006	441190	730725	931262	940607	945548	950853	951938	980683	983115
021636	096703	232180	374095	441677	730836	933428	940829	949517	950881	951941	980769	988022
022631	100039	276273	376122	441787	731432	939512	940987	949545	950934	951947	981762	992082
022913	108867	301104	379251	441972	752076	940019	941004	949611	950985	951979	981864	992230
028907	109031	301652	379505	462469	752838	940082	941101	949614	951064	967069	981921	992377
029581	115153	312504	381198	481264	789013	940086	941189	950075	951112	967216	981935	992529
031234	124015	314726	381251	481298	895479	940208	941222	950089	951274	968633	981984	992553
040323	127018	315029	381344	481366	900111	940213	941297	950111	951316	976012	982027	
047013	131270	332083	381408	487115	911225	940321	941355	950148	951337	977051	982075	
049303	142020	334003	381452	551511	915243	940337	941383	950211	951543	980071	982215	

— Product Information Requirements, Mail Entry and Payment Technology, 12-29-22

Enjoy the Thrill of Iconic *Pony Cars* Forever® Stamps



ON SALE NATIONWIDE: AUGUST 25, 2022
Sold as a full pane.

Missing, Lost, or Stolen U.S. Money Order Forms

Do Not Cash — Upon Receipt, Notify Local Postal Inspectors

Provide this listing to all Postal Service™ employees responsible for accepting and cashing postal money orders. Destroy all interim notices when the numbers listed appear in the *Postal Bulletin*. The new money order serial

numbers consist of the first 10 digits. The eleventh digit is a check digit only.

Do not cash outdated money orders **104 151 601 to 692 600 000**. Advise holders to send invalid money orders to Canada Post Corporation, Ottawa, Canada K1A 0B1. Check for altered dollar amounts by holding money orders to the light.

010 001 0200 to 0299	043 205 5922 to 5999	083 784 8886 to 8899	174 281 9347 to 9399
010 504 1932 to 1999	044 087 3457 to 3499	083 913 6915 to 6999	175 251 2600 to 0699
011 582 1889 to 1899	044 087 4000 to 4099	084 478 3920 to 3999	176 281 7937 to 7950
011 588 2900 to 3099	044 226 2487 to 2512	086 000 8271 to 8299	176 281 7963 to 7999
012 441 0784 to 0799	044 306 4200 to 4299	086 798 3840 to 3849	176 731 6586 to 6599
012 579 5675 to 5699	044 306 4370 to 4599	088 404 4472 to 4499	178 254 5000 to 9999
013 289 6176 to 6199	045 524 4121 to 4298	088 404 5584 to 5699	178 881 9900 to 9999
013 610 0014 to 0099	046 800 9870 to 9899	088 757 8688 to 8699	180 031 2089 to 2098
014 932 1000 to 1099	047 352 4000 to 4099	088 757 9400 to 9499	180 403 7723 to 7741
014 972 0800 to 0899	048 383 7650 to 7659	089 358 2248 to 2257	180 428 4580 to 0599
015 363 0065 to 0099	048 396 3647 to 3699	090 663 9678 to 9684	182 368 7544 to 0599
017 028 3200 to 3299	051 142 0755 to 0799	091 818 0071 to 0099	182 475 3229 to 3258
018 569 5333 to 5399	051 774 8857 to 8899	093 106 9346 to 9355	182 475 3904 to 3933
018 986 5264 to 5299	051 781 2875 to 2885	093 203 0500 to 0599	182 631 0031 to 0099
019 518 2814 to 2899	051 977 7010 to 7023	093 684 3630 to 3699	182 911 6539 to 6600
020 698 5159 to 5199	052 058 7115 to 7199	094 081 5074 to 5099	184 218 2760 to 2799
020 844 7307 to 7399	054 450 1130 to 1167	094 216 2555 to 2599	185 828 1474 to 1499
020 972 8948 to 8999	057 670 0563 to 0599	094 580 7062 to 7099	186 132 7583 to 0599
022 021 9110 to 9181	058 187 3836 to 3899	094 639 4200 to 4299	186 629 0589 to 0599
022 037 1411 to 1499	058 523 3003 to 3099	095 070 7186 to 7199	187 184 6177 to 0199
022 527 9201 to 9210	058 591 1153 to 1299	095 076 8300 to 8399	187 323 8200 to 8299
022 529 1882 to 1899	058 895 3746 to 3799	095 354 6864 to 6899	187 441 6080 to 6099
023 637 7169 to 7199	059 986 0814 to 0899	097 224 1350 to 1599	188 831 6774 to 6799
024 380 4100 to 4199	060 406 7650 to 7699	100 160 3800 to 3899	188 835 6370 to 6399
024 496 6870 to 6896	063 491 8122 to 8199	104 667 6400 to 6499	189 083 1064 to 1099
025 092 0987 to 0999	063 916 9968 to 9999	104 876 8937 to 8999	189 660 9583 to 9599
025 369 5535 to 5599	064 091 4500 to 4599	112 049 4413 to 4499	191 179 0377 to 0399
025 729 1151 to 1199	065 170 0471 to 0499	112 870 9765 to 9799	192 050 5762 to 5781
025 729 1643 to 1799	065 255 7909 to 7999	113 319 2000 to 2099	194 456 8600 to 0699
026 492 3180 to 3199	065 392 6345 to 6399	114 402 3850 to 3899	195 194 6881 to 6899
027 361 0430 to 0499	066 099 2014 to 2099	114 866 5368 to 5397	195 874 1112 to 1199
027 369 4482 to 4495	066 648 2880 to 2899	116 154 2800 to 2899	196 979 0524 to 0599
027 671 8762 to 8776	066 787 3639 to 3699	116 986 4400 to 4499	197 244 6100 to 6199
027 787 9886 to 9899	066 845 7500 to 9999	117 175 1647 to 5169	197 244 6300 to 6399
027 965 9487 to 9499	067 093 3869 to 3899	117 951 4687 to 4699	197 244 6400 to 6499
028 100 8069 to 8099	068 895 0334 to 0399	117 951 5200 to 5299	197 244 6500 to 6599
028 191 1852 to 1999	070 724 4488 to 4499	119 786 3051 to 3064	197 244 6600 to 6699
028 850 3000 to 3199	070 841 9181 to 9199	119 815 8961 to 6199	197 244 6700 to 6799
029 510 1500 to 1599	070 844 2546 to 2599	119 850 7400 to 7499	197 244 6800 to 8999
030 687 0903 to 0999	070 916 1340 to 1399	119 850 7700 to 7999	198 285 2556 to 2566
030 701 3442 to 3499	071 047 5768 to 5799	121 634 0460 to 0499	199 105 0778 to 0799
031 077 4507 to 4799	071 179 9800 to 9899	122 451 9879 to 9899	199 678 2968 to 2999
032 295 7500 to 9999	071 386 3682 to 3699	122 714 6805 to 6900	202 748 5133 to 5199
034 394 1000 to 1099	071 507 6840 to 6899	124 916 0304 to 0499	202 748 5245 to 5299
034 943 0400 to 0799	072 045 9641 to 9699	126 423 0136 to 0169	202 748 5300 to 5399
035 035 4337 to 4399	072 675 8287 to 8299	127 500 2328 to 2399	202 748 5400 to 5499
037 312 7500 to 7599	073 763 0867 to 0876	160 901 2254 to 2299	203 256 1240 to 1299
037 706 9578 to 9599	073 763 0878 to 0887	161 103 6581 to 6599	204 230 3577 to 3595
037 805 3677 to 3699	073 763 0889 to 0898	161 194 2857 to 0899	205 019 0174 to 0199
037 909 5490 to 5499	077 617 5481 to 5499	162 032 4447 to 4499	206 936 3184 to 3199
037 931 4660 to 4699	077 999 4001 to 4090	163 257 1085 to 1099	207 196 9900 to 9999
039 145 6521 to 6595	078 174 4475 to 4499	164 359 2406 to 2499	207 204 0700 to 0799
040 024 3901 to 3999	078 219 4931 to 4999	166 101 1433 to 1499	207 204 0800 to 0899
040 674 7100 to 7199	078 250 4756 to 4799	167 555 5201 to 5212	207 514 3857 to 3899
040 688 8816 to 8899	078 823 8312 to 8399	167 555 5214 to 5299	208 556 4707 to 4799
041 299 6752 to 6799	079 374 0300 to 2499	169 618 6274 to 6299	210 057 4038 to 4047
041 623 8889 to 8899	079 807 2342 to 2399	171 806 6878 to 6893	210 221 0548 to 0599
041 803 6565 to 6599	082 721 0228 to 0254	173 639 4685 to 4699	214 061 4711 to 4724
043 129 1968 to 1997	083 140 5000 to 7499	174 238 2779 to 2799	214 303 6311 to 6325

633 588 7173 to 7182
634 725 0700 to 0799
634 803 3239 to 3299
634 807 2474 to 2499
634 827 5900 to 5999
634 886 3428 to 3499
635 559 3449 to 3499
636 289 6214 to 6299
636 634 8007 to 8042
637 150 1200 to 1299
637 562 5828 to 5899
638 042 1647 to 1699
638 049 4984 to 4999
638 318 1115 to 1199
638 318 1453 to 1499
638 885 0000 to 0299
638 903 4362 to 4373
639 415 1929 to 1999
639 415 2019 to 2099
639 420 6200 to 6299
639 469 3517 to 3799
639 605 2143 to 2199
639 657 8600 to 8799
640 289 7500 to 7599
640 289 7700 to 7999
641 170 4420 to 4499
641 318 3133 to 3199
641 378 6500 to 6999
641 383 8739 to 8799
641 877 3187 to 3299
641 877 3310 to 3399
642 355 8094 to 8199
642 355 8308 to 8999
642 900 0018 to 0099
643 030 6254 to 6299
644 066 0882 to 0899
644 069 0600 to 0699
644 077 7506 to 7699
644 085 8157 to 8199
644 112 9839 to 9899
644 373 9083 to 9099
644 380 1460 to 1499
644 733 4715 to 4799
644 900 9712 to 9799
644 901 0109 to 1299
644 901 1325 to 1399
644 923 6800 to 7799
644 932 4655 to 4699
645 318 7240 to 7499
645 333 1766 to 1799
645 790 8632 to 8699
645 821 0657 to 0699
645 930 7948 to 7999
645 975 0737 to 0762
646 242 6200 to 6299
646 270 7639 to 7799
646 798 4000 to 4999
647 048 7035 to 7099
647 049 2900 to 2999
647 398 8300 to 8399
647 398 8481 to 8499
647 437 3000 to 4999
647 811 2188 to 2199
648 009 6057 to 6099
648 163 5300 to 5499
648 722 5283 to 5299
648 892 3164 to 3199
649 100 3989 to 3999
649 647 0370 to 0399
649 647 0522 to 0599
649 647 5237 to 5399
649 647 9100 to 9299
649 666 7800 to 8299
650 114 7707 to 7719

650 130 3400 to 3599
650 213 0406 to 0499
650 555 1749 to 1799
650 564 1900 to 1999
650 627 4212 to 4299
650 736 2043 to 2099
650 739 1540 to 1699
651 741 4415 to 4499
651 882 2800 to 2899
652 754 6317 to 6399
653 131 4945 to 4999
653 426 3300 to 3399
653 455 4874 to 4899
654 238 0000 to 0399
654 404 3065 to 3092
654 962 2900 to 3199
655 103 5081 to 5199
655 523 2600 to 2999
656 305 2448 to 2499
657 347 4438 to 4999
657 710 8100 to 8999
657 780 0985 to 0999
658 586 1400 to 1499
658 877 8000 to 8199
658 880 8000 to 8199
659 398 7300 to 7399
659 706 8113 to 8199
659 846 7837 to 7899
660 510 4100 to 4199
660 673 0400 to 0599
661 488 5000 to 5099
661 609 9100 to 9199
661 716 9420 to 9499
661 906 6522 to 6599
662 021 8332 to 8399
662 068 0700 to 0899
662 553 0774 to 0799
663 078 7034 to 7099
663 763 5300 to 5399
663 883 7039 to 7499
663 938 9200 to 9299
664 253 8000 to 8499
664 656 3055 to 3099
665 174 6400 to 6499
665 274 8208 to 8299
665 669 5400 to 5499
666 132 8226 to 8299
666 696 2209 to 2299
666 696 2309 to 2399
667 032 9300 to 9399
667 729 5529 to 5599
668 383 8400 to 8699
670 368 3400 to 3499
670 369 7336 to 7399
670 750 7169 to 7199
671 046 6200 to 6399
671 251 5448 to 5499
671 926 5600 to 5799
672 444 2000 to 2999
672 828 3410 to 3499
673 167 5776 to 5799
675 464 3700 to 3799
675 464 4000 to 4199
676 365 5958 to 5999
676 669 1024 to 1099
677 126 6734 to 6799
677 333 9979 to 9999
677 466 1088 to 1099
678 071 4500 to 4799
678 096 7531 to 7599
679 909 2578 to 2599
680 112 9565 to 9599
680 244 0903 to 0999
680 412 6046 to 6099

680 761 6800 to 6899
681 677 0540 to 0699
682 070 1029 to 1099
682 956 6280 to 6299
682 956 6490 to 6599
682 956 6700 to 6799
682 965 1178 to 1199
682 965 1201 to 1299
683 118 2389 to 2399
683 378 2000 to 2099
683 378 2117 to 2299
683 415 1200 to 1499
683 444 8159 to 8199
685 154 7780 to 7789
685 297 7645 to 7699
685 623 5264 to 5299
685 650 9487 to 9499
685 669 4200 to 4299
685 757 8452 to 8499
686 071 2694 to 2799
686 176 3333 to 3354
686 372 3200 to 3299
686 644 5879 to 5899
686 899 1371 to 1399
686 931 7636 to 7699
687 601 0973 to 0999
687 614 6774 to 6799
688 120 9000 to 9999
688 314 3107 to 3191
690 291 1361 to 1371
690 788 2877 to 2899
690 893 5344 to 5399
690 893 5512 to 5599
690 904 1300 to 1599
690 941 6000 to 6199
691 313 6383 to 6399
691 313 6600 to 6699
691 582 8003 to 8099
691 664 1800 to 1999
691 664 2400 to 2499
692 727 9362 to 9399
692 798 1800 to 1899
693 249 0779 to 0799
693 249 0877 to 1699
693 445 0566 to 0999
693 448 8500 to 8999
693 645 9583 to 9599
693 965 4200 to 4299
695 741 2906 to 2999
695 947 8518 to 8599
696 662 8247 to 8299
697 447 8285 to 8296
698 042 4816 to 4899
698 131 2138 to 2157
698 227 0000 to 0099
700 065 2570 to 2599
700 065 4800 to 4899
700 190 3350 to 3359
700 228 6048 to 6099
700 650 0452 to 0499
700 666 1323 to 1349
700 786 9106 to 9142
700 859 0744 to 0758
701 028 6780 to 6899
701 213 3900 to 3999
701 267 2000 to 3999
701 335 7312 to 7399
701 369 2005 to 2050
701 499 2260 to 2299
701 503 2247 to 2299
701 541 2271 to 2299
701 553 6557 to 6599
701 578 7460 to 7469
701 578 7475 to 7499

701 601 3457 to 3499
701 605 5913 to 5999
701 695 3982 to 3999
701 695 4148 to 4199
701 695 4227 to 4299
701 708 1741 to 1799
701 736 3966 to 3999
701 772 0870 to 0899
701 838 2800 to 2899
701 941 0600 to 0699
702 171 1603 to 1699
702 195 5109 to 5199
702 254 9300 to 9399
702 264 7569 to 7599
702 519 0513 to 0524
702 713 1800 to 1809
702 821 5730 to 5799
702 821 5805 to 5899
702 844 6975 to 6994
702 846 6331 to 6399
702 848 3900 to 3999
702 857 7302 to 7499
702 878 0114 to 0199
703 364 1707 to 1799
740 002 7710 to 7719
740 037 6730 to 6800
740 119 2275 to 2284
740 130 6688 to 6698
740 144 2780 to 2795
740 241 9049 to 9099
740 252 9265 to 9294
740 255 1718 to 1799
740 274 2602 to 2619
740 277 0366 to 0392
740 332 7658 to 7671
740 348 6641 to 6658
740 351 4790 to 4799
740 374 7416 to 7499
740 470 2420 to 2443
740 514 0300 to 0499
740 523 7432 to 7449
740 535 1555 to 1580
740 557 3570 to 3579
740 650 4104 to 4140
740 684 0620 to 0800
740 701 6105 to 6114
740 705 9790 to 9799
740 726 6400 to 6500
740 748 8319 to 8329
740 765 3306 to 3399
740 774 8434 to 8499
740 779 4259 to 4299
740 786 1885 to 1899
740 790 5989 to 5999
740 803 4870 to 4879
740 820 4854 to 7836
740 827 7578 to 7594
740 917 7490 to 7499
740 918 5531 to 5549
741 037 8528 to 8551
742 030 6135 to 6149
742 033 2663 to 2674
742 040 3300 to 3309
742 112 8155 to 8199
742 151 5000 to 5014
742 191 4640 to 4649
742 192 5210 to 5224
742 222 9200 to 9210
742 228 9660 to 9669
742 247 6980 to 6989
742 290 0936 to 0950
742 302 7600 to 7699
742 305 3711 to 3799
742 305 3800 to 3899

Missing, Lost, or Stolen Canadian Money Order Forms

Do Not Cash — Upon Receipt, Notify Local Postal Inspectors

Provide this listing to all Postal Service™ employees responsible for accepting and cashing postal money orders. Destroy all interim notices when the numbers listed appear in the *Postal Bulletin*. The new money order serial

numbers consist of the first 9 digits. The tenth digit is a check digit only.

Do not cash outdated money orders **104 151 601 to 692 600 000**. Advise holders to send invalid money orders to Canada Post Corporation, Ottawa, Canada K1A 0B1. Check for altered dollar amounts by holding money orders to the light.

719 869 731	to	9 760	728 702 338	to	2 400	734 950 111	to	0 170	742 325 668	to	5 700
720 227 871	to	7 930	728 915 371	to	5 850	735 120 331	to	0 840	742 408 771	to	8 830
720 227 949	to	7 960	728 953 141	to	3 410	735 283 008	to	3 020	742 512 120	to	2 150
720 368 543	to	8 570	728 954 280	to	4 310	735 293 131	to	3 220	742 684 849	to	4 890
720 392 151	to	2 570	729 169 081	to	9 140	735 635 010	to	5 040	742 839 553	to	9 630
720 556 491	to	6 640	729 363 841	to	3 870	735 783 961	to	3 990	742 913 668	to	3 700
720 558 621	to	8 650	729 682 891	to	3 190	735 803 401	to	3 430	742 917 287	to	7 296
720 575 361	to	5 570	729 838 940	to	9 070	736 005 420	to	5 440	742 921 891	to	1 980
720 590 152	to	0 179	729 839 101	to	9 130	736 366 021	to	6 110	742 983 631	to	3 810
721 638 331	to	9 170	730 077 683	to	7 840	736 624 456	to	4 500	743 020 021	to	0 170
721 815 391	to	5 420	730 109 847	to	9 880	736 670 851	to	1 060	743 206 491	to	6 500
721 969 713	to	9 740	730 373 761	to	3 850	736 767 061	to	7 090	743 235 992	to	6 050
722 072 137	to	2 160	730 501 951	to	2 130	736 767 093	to	7 120	743 940 631	to	0 900
722 378 265	to	8 280	730 519 379	to	9 470	736 982 191	to	2 370	743 978 011	to	8 070
722 413 990	to	4 004	730 569 278	to	9 360	736 982 551	to	2 730	744 234 751	to	4 780
722 764 948	to	4 980	730 711 711	to	1 740	737 110 141	to	0 170	744 499 591	to	9 680
722 825 840	to	5 889	730 722 991	to	3 230	737 185 501	to	5 710	744 626 901	to	6 910
723 153 841	to	3 850	730 845 970	to	5 990	737 317 321	to	7 350	745 388 794	to	8 910
723 237 616	to	7 630	730 888 291	to	8 320	737 517 781	to	7 840	746 446 806	to	6 820
723 331 081	to	1 110	730 927 591	to	7 680	737 628 181	to	8 210	746 818 351	to	8 410
723 496 443	to	6 470	731 307 914	to	7 930	737 634 258	to	4 270	747 245 266	to	5 280
723 967 291	to	7 320	731 402 431	to	2 460	738 361 971	to	1 980	747 364 813	to	4 830
724 655 196	to	5 340	731 407 232	to	7 320	738 447 601	to	7 660	747 501 434	to	1 450
724 711 441	to	1 500	731 588 301	to	8 340	738 648 355	to	8 450	747 739 891	to	0 070
724 711 538	to	1 560	731 767 273	to	7 320	738 849 811	to	9 900	748 148 649	to	8 760
724 793 221	to	3 250	731 781 061	to	1 120	738 892 270	to	2 290	748 259 960	to	9 970
724 908 109	to	8 120	731 837 821	to	7 910	738 997 259	to	7 380	748 565 162	to	5 280
724 937 461	to	7 670	731 841 377	to	1 450	739 161 451	to	1 540	748 874 988	to	5 030
725 163 118	to	3 151	732 018 481	to	8 600	739 219 381	to	9 440	749 137 381	to	7 410
725 202 735	to	2 750	732 067 972	to	8 370	739 740 151	to	0 180	749 190 192	to	0 210
725 398 591	to	8 800	732 188 649	to	8 670	739 793 491	to	3 520	749 685 421	to	5 450
725 464 591	to	4 920	732 193 460	to	3 470	739 793 527	to	3 550	749 846 791	to	6 850
725 475 321	to	5 330	732 201 241	to	1 390	739 942 621	to	2 650	749 993 131	to	3 580
725 711 057	to	1 070	732 220 431	to	0 440	739 999 231	to	9 320	750 071 587	to	1 610
725 738 581	to	8 730	732 355 201	to	5 380	740 011 517	to	1 530	750 408 167	to	8 183
725 981 311	to	1 430	732 472 320	to	2 560	740 030 701	to	0 970	750 438 421	to	8 501
725 987 835	to	7 880	732 541 605	to	1 620	740 261 740	to	1 820	750 743 911	to	4 030
726 060 811	to	0 900	732 572 221	to	2 490	740 265 811	to	6 290	750 779 118	to	9 400
726 391 970	to	2 520	732 586 479	to	6 710	740 299 111	to	9 170	750 910 981	to	1 010
726 484 771	to	4 800	732 994 037	to	4 080	740 299 231	to	9 260	750 960 841	to	0 900
726 493 351	to	5 300	733 163 449	to	3 460	740 329 266	to	9 320	751 296 211	to	6 240
726 504 031	to	4 063	733 297 171	to	7 290	740 889 081	to	9 090	751 539 121	to	9 180
726 504 070	to	4 090	733 446 631	to	7 110	741 010 421	to	0 530	751 541 311	to	1 790
726 504 331	to	4 390	733 474 665	to	4 770	741 113 041	to	3 370	751 757 641	to	7 700
726 563 701	to	4 060	733 704 482	to	4 570	741 373 891	to	4 340	751 936 951	to	7 010
726 599 371	to	9 460	733 751 041	to	1 130	741 452 369	to	2 490	751 951 861	to	1 890
726 626 356	to	6 370	734 009 101	to	9 130	741 492 991	to	3 140	751 999 021	to	9 110
727 182 271	to	2 510	734 290 759	to	0 770	741 553 460	to	3 470	752 139 516	to	9 570
727 416 181	to	6 240	734 389 273	to	9 290	741 764 431	to	4 520	752 182 892	to	2 950
727 481 431	to	1 460	734 440 031	to	0 111	741 764 431	to	4 520	752 206 861	to	7 100
727 749 241	to	9 780	734 797 201	to	7 320	742 178 834	to	8 880	752 295 241	to	5 600
728 382 331	to	2 480	734 939 611	to	9 640	742 325 500	to	5 520	752 731 351	to	1 410

752 767 441 to 7 470
753 008 941 to 9 030
753 194 311 to 4 370
753 620 378 to 0 400
754 013 917 to 3 940
754 161 061 to 1 120
754 358 445 to 8 610
754 410 451 to 0 660
754 438 393 to 8 410
754 493 109 to 3 130
754 664 182 to 4 220
754 816 377 to 6 470
755 487 421 to 7 600
755 592 901 to 3 140
755 790 020 to 0 030
755 791 730 to 1 800
755 926 951 to 7 070
755 934 332 to 4 510
755 957 701 to 8 000
755 962 981 to 3 280
756 035 371 to 5 490
756 301 257 to 1 290
756 371 565 to 1 580
756 876 031 to 6 120
756 876 151 to 6 240
756 970 129 to 0 140
757 059 613 to 9 630
757 078 540 to 8 560
757 086 209 to 6 240
757 240 591 to 0 650
757 277 371 to 7 700
757 291 591 to 2 730
757 964 251 to 4 280
758 067 001 to 7 090
758 105 221 to 5 250
758 324 941 to 5 000
758 593 628 to 3 650
758 709 038 to 9 060
758 744 101 to 4 160
758 850 883 to 0 900
758 860 951 to 1 550
759 152 851 to 2 880
759 740 941 to 1 090
760 004 596 to 4 610
760 118 191 to 8 250
760 155 001 to 5 090
760 378 002 to 8 020
760 692 722 to 2 749
761 055 460 to 5 480
761 169 781 to 9 810
761 504 941 to 5 120
761 516 836 to 6 910
761 613 588 to 3 600
761 688 631 to 8 690
761 805 199 to 5 240
761 826 106 to 6 120
761 881 171 to 1 560
761 975 641 to 5 670
761 975 886 to 5 895
762 304 144 to 4 170
762 324 931 to 4 960
762 439 261 to 9 290
762 524 158 to 4 220
762 584 872 to 4 970

762 593 431 to 3 460
763 155 160 to 5 180
763 178 631 to 8 660
763 506 001 to 6 060
763 522 141 to 2 470
763 717 694 to 7 800
763 826 461 to 6 520
763 900 460 to 0 471
763 900 479 to 0 530
763 917 271 to 7 750
764 125 801 to 5 860
764 284 525 to 4 560
764 526 241 to 6 330
764 601 421 to 1 600
764 650 231 to 0 470
764 984 371 to 4 850
765 003 667 to 3 680
765 042 517 to 2 540
765 194 728 to 4 970
765 387 365 to 7 450
765 541 801 to 2 100
765 638 461 to 8 970
765 647 101 to 7 190
765 813 781 to 4 029
765 879 314 to 9 390
765 954 001 to 4 030
766 120 286 to 0 320
766 125 716 to 5 750
766 158 824 to 8 840
766 388 433 to 8 460
766 509 421 to 9 660
766 572 901 to 3 020
766 748 500 to 8 521
767 024 341 to 4 370
767 326 471 to 6 590
767 332 561 to 2 950
768 009 841 to 9 960
768 011 489 to 1 520
768 177 980 to 7 990
768 391 081 to 1 170
768 661 569 to 1 650
769 000 051 to 0 080
769 050 841 to 0 900
769 159 081 to 9 178
769 737 496 to 7 510
769 778 491 to 8 730
769 827 331 to 7 450
770 216 071 to 6 100
770 723 281 to 3 400
770 790 451 to 0 480
770 915 150 to 5 490
771 455 551 to 5 610
771 609 661 to 9 690
771 932 551 to 2 580
772 057 224 to 7 440
772 162 660 to 3 070
772 718 615 to 8 640
772 940 140 to 0 160
772 970 886 to 0 940
773 009 419 to 9 430
773 112 031 to 2 060
773 125 387 to 5 410
773 179 320 to 9 410
773 202 989 to 3 140

773 208 991 to 9 290
773 231 311 to 1 340
773 348 739 to 8 940
773 348 739 to 8 940
773 575 891 to 5 950
773 852 971 to 3 030
775 373 449 to 3 460
789 257 191 to 7 250
790 448 020 to 8 460
790 597 485 to 7 530
790 911 883 to 1 900
791 057 441 to 7 550
791 239 081 to 9 290
791 374 483 to 4 500
791 387 971 to 8 030
791 447 521 to 7 850
791 451 151 to 1 240
791 500 009 to 0 470
791 771 431 to 1 490
792 004 293 to 4 320
792 018 379 to 8 420
792 070 621 to 0 740
792 145 211 to 5 230
792 391 381 to 1 620
792 452 779 to 2 790
792 772 728 to 2 770
792 903 511 to 3 990
793 282 518 to 2 533
794 041 831 to 2 040
794 397 709 to 7 780
794 581 741 to 2 040
794 592 122 to 2 150
795 032 251 to 2 340
795 796 291 to 6 350
796 070 139 to 0 160
796 143 151 to 3 630
796 159 725 to 9 740
796 169 306 to 9 340
796 373 406 to 3 430
796 602 961 to 3 050
796 708 441 to 8 500
796 886 281 to 6 430
796 901 701 to 2 000
796 975 466 to 5 590
797 272 917 to 2 950
797 519 441 to 9 460
797 519 731 to 0 240
797 535 181 to 5 330
797 646 151 to 6 180
798 040 053 to 0 080
798 055 813 to 5 830
798 055 891 to 5 950
798 326 371 to 6 520
798 339 167 to 9 210
798 562 411 to 2 440
798 632 461 to 2 490
798 807 151 to 7 510
798 944 761 to 5 030
799 118 616 to 8 640
799 133 191 to 3 220
799 177 626 to 7 650
799 854 751 to 5 200
800 044 320 to 4 410
800 211 901 to 2 440

800 427 530 to 7 540
800 872 741 to 2 830
801 349 801 to 9 830
801 676 681 to 7 100
802 967 821 to 7 940
803 217 601 to 7 780
803 729 731 to 9 850
803 747 402 to 7 520
804 138 181 to 8 420
804 428 224 to 8 250
804 682 411 to 2 710
805 272 525 to 2 540
805 523 445 to 3 460
805 745 704 to 5 730
806 452 907 to 2 980
806 744 781 to 4 850
806 982 181 to 2 300
807 764 791 to 4 910
808 089 931 to 9 960
808 656 423 to 6 450
808 753 771 to 3 800
809 189 001 to 9 010
809 886 879 to 6 930
809 890 489 to 0 500
810 323 734 to 3 760
810 367 116 to 7 140
810 526 351 to 6 500
810 806 911 to 6 940
810 807 211 to 7 240
811 423 021 to 3 110
811 517 221 to 7 239
811 721 101 to 1 130
812 025 721 to 5 900
812 093 073 to 3 130
812 100 821 to 0 840
812 465 251 to 5 610
812 918 341 to 8 670
812 918 701 to 8 760
813 050 491 to 0 520
813 073 171 to 3 200
813 398 476 to 8 550
813 713 971 to 4 000
813 858 121 to 8 150
814 789 330 to 9 349
814 984 656 to 4 680
815 016 020 to 6 030
815 199 410 to 9 420
815 240 491 to 0 520
815 755 591 to 5 620
815 755 622 to 5 650
815 806 381 to 6 680
816 126 834 to 6 870
816 156 721 to 6 780
816 580 903 to 0 920
816 945 571 to 5 600
817 253 011 to 3 280
817 763 881 to 4 060
818 330 562 to 0 610
818 459 641 to 9 670
818 926 273 to 6 320
818 950 351 to 0 380
818 962 492 to 2 530
819 032 341 to 2 730
819 127 054 to 7 080

819 278 540	to 8 670	822 703 442	to 3 470	826 226 644	to 6 670	828 539 341	to 9 370
819 544 681	to 4 740	822 900 991	to 1 020	826 582 951	to 3 430	828 732 331	to 2 390
819 928 441	to 8 650	822 925 951	to 6 100	826 720 201	to 0 230	828 807 781	to 7 840
820 034 406	to 4 430	823 284 931	to 4 990	827 005 671	to 5 830	828 830 952	to 0 963
820 070 761	to 1 540	823 293 031	to 3 210	827 287 861	to 7 950	828 939 781	to 0 050
820 191 342	to 1 360	823 556 011	to 6 100	827 291 502	to 1 520	829 002 721	to 2 870
820 274 856	to 4 880	824 078 341	to 8 370	827 575 381	to 5 470	829 005 301	to 5 540
820 600 171	to 0 230	824 156 325	to 6 340	827 609 085	to 9 100	829 080 241	to 0 330
821 172 241	to 2 360	824 511 252	to 1 270	827 619 811	to 9 840	829 160 986	to 1 000
821 229 661	to 9 720	824 588 281	to 8 370	827 883 511	to 3 600	829 176 841	to 6 930
821 229 743	to 9 780	825 140 397	to 0 460	828 160 441	to 0 530	829 471 561	to 1 590
821 903 731	to 3 910	825 409 651	to 9 680	828 376 201	to 6 260	829 561 065	to 1 080
821 927 841	to 7 850	825 472 171	to 2 200	828 441 602	to 1 630	829 566 481	to 6 510
822 505 801	to 5 830	826 042 898	to 2 920	828 539 316	to 9 340	829 569 931	to 9 960

— Criminal Investigations Group, U.S. Postal Inspection Service, 12-29-22

Verifying U.S. Postal Service Money Orders

Follow these steps to cash a Postal Service™ money order:

1. Check that the amount does not exceed the legal limit: \$1,000 for domestic, and \$700 for international Postal Service money orders.
2. Check that the proper security features are present:
 - When held to the light, a watermark of Benjamin Franklin is repeated from top to bottom on the left side.
 - When held to the light, a dark line (security thread) runs from top to bottom with the word “USPS” repeated.
 - When there is discoloration around the dollar amounts, this might indicate the amounts were changed.

These appear in Postal Service Notice 299, *U.S. Postal Money Order Reference Card*, or online at usps.com/shop/money-orders.htm.

3. If the money order seems suspicious, call the U.S. Postal Service Money Order Verification System at 866-459-7822.

Provide this information to local banks and retailers, as they also receive Postal Service money orders for cashing.

— Delivery and Retail Customer Service Operations, 12-29-22

Counterfeit Canadian Money Order Forms

Do Not Cash

To be posted and used by retail window employees. As directed, destroy previous notices. Destroy all interim notices when the numbers listed appear in the *Postal Bulletin*.

671,819,086	683,594,542	687,262,503
676,612,640	684,683,610	687,262,525
677,891,039	686,619,878	687,262,526
678,282,493	686,619,886	687,287,578
678,916,031	686,619,887	687,287,581
679,552,215	686,794,382	687,287,582
679,694,334	686,794,426	694,063,898
679,751,983	686,794,427	694,063,899
679,800,207	686,794,431	694,063,980
681,130,536	687,262,502	701,321,725
681,844,376		

— Criminal Investigations Group, U.S. Postal Inspection Service, 12-29-22

Toll-Free Number Available to Verify Canadian Money Orders

The Canada Post Corporation has a toll-free number that cashing agents can call to verify the validity of Canadian Postal Money Orders. The number is 800-563-0444.

This toll-free number is printed on the back of the Canadian Postal Money Orders.

— Criminal Investigations Group, U.S. Postal Inspection Service, 12-29-22

Celebrate the 50th Anniversary of

Title IX

Civil Rights
legislation
with
USPS
Forever[®]
Stamps



On Sale
Nationwide:
March 3, 2022



Other Information

Overseas Military/Diplomatic Mail

Mail addressed to military and diplomatic post offices overseas is subject to certain conditions or restrictions of mailing regarding content, preparation, and handling. The APO/FPO/DPO table outlines these conditions by APO/FPO/DPO ZIP Codes™ through the use of footnoted mailing restrictions codes (see the [Restrictions](#) page following the table).

Acceptance clerks must use the table with the Retail System Software terminal to determine which APO/FPO/DPO ZIP Codes are active and which conditions of mailing apply.

The entries under “Changes” appear in bold in the following APO/FPO/DPO table:

Changes

APO/FPO/DPO	Action	Effective Date	See Restrictions
APO AE 09304	Add B	12/15/2022	A-B-C-C1-C2-F-F1-F3-H-M-N-R-S-V-Z-Z1
APO AP 96271	Add B	12/15/2022	A-B-F-F3-M-P-R-S-U
FPO AP 96310	Add C, C2, F	12/06/2022	B-C-C2-F-F3-M-R-S-W
FPO AP 96311	Add C, C2, F	12/06/2022	B-C-C2-F-F3-M-R-S-W
FPO AP 96315	Add C, C2 Remove F1, H	12/06/2022	B-C-C2-F-F3-M-R-S-W
APO AP 96343	Add B	12/15/2022	A-B-F-F3-M-P-R-S-U2
FPO AP 96371	Add C, C2	12/05/2022	B-C-C2-F-F3-M-R-S-W
FPO AP 96372	Add C, C2, F, F3, R, S	12/05/2022	B-C-C2-F-F3-M-R-S-W
FPO AP 96373	Add C, C2, F, F3, R, S	12/05/2022	B-C-C2-F-F3-M-R-S-W
FPO AP 96374	Add C, C2, F, F3, R, S	12/06/2022	B-C-C2-F-F3-M-R-S-W
FPO AP 96375	Add C, C2, F	12/05/2022	B-C-C2-F-F3-M-R-S-W
FPO AP 96376	Add C, C2, F	12/05/2022	B-C-C2-F-F3-M-R-S-W
FPO AP 96378	Add C, C2, F, F3, R, S	12/06/2022	B-C-C2-F-F3-M-R-S-W
FPO AP 96379	Add C, F	12/05/2022	B-C-C2-F-F3-M-R-S-W
FPO AP 96380	Add C, C2, F	12/05/2022	B-C-C2-F-F3-M-R-S-W
FPO AP 96382	Add C, C2	12/05/2022	B-C-C2-F-F3-M-R-S-W
FPO AP 96384	Add C, C2	12/05/2022	B-C-C2-F-F3-M-R-S-W
FPO AP 96385	Add C, C2	12/05/2022	B-C-C2-F-F3-M-R-S-W
FPO AP 96386	Add C, C2, F, R	12/05/2022	B-C-C2-F-F3-M-R-S-W
FPO AP 96387	Add C, C2, F	12/06/2022	B-C-C2-F-F3-M-R-S-W
FPO AP 96388	Add C, C2, F	12/05/2022	B-C-C2-F-F3-M-R-S-W
FPO AP 96389	Add C, C2, F, F3, R, S	12/05/2022	B-C-C2-F-F3-M-R-S-W
APO AP 96502	Add B	12/15/2022	A-B-C-C1-F-F1-F3-J-M-N-R-R1-S-T-U-V
FPO AP 96606	Add C, C2, F, M, W	12/06/2022	B-C-C2-F-F3-M-R-S-V-W

We have eliminated “Not Active” entries from the table below to save space and paper.

APO/FPO/DPO Table

APO/ FPO/ DPO	See Restrictions	APO/ FPO/ DPO	See Restrictions	APO/ FPO/ DPO	See Restrictions	APO/ FPO/ DPO	See Restrictions
09002	A-B-C-C2-F-F3-H-N-R-S-V-Z-Z1	09011	B-C-C2-D-E-F3-H-M-R-S	09018	A-B-C-C2-F-F3-H-N-R-S-V-Z-Z1	09060	B-C-C2-D-E-F1-F3-H-M-N-R-S-U-Z1
09003	B-C-C2-D-E-F-F3-H-M-P-R-S-U	09012	B-C-C2-D-E-F3-H-M-R-S-U-Z1	09020	B-C-C2-D-E-F-F3-H-M-R-S-U	09067	B-C-C2-D-E-F-F3-H-M-R-S-U
09004	B-C-C2-D-E-F3-H-M-R-S-U	09013	B-C-C2-D-E-F-F1-F3-H-M-R-S-U-Z1	09021	B-C-C2-D-E-F3-H-M-R-S-U-Z1	09068	B-C-C2-D-E-F3-H-R-S-U-Z1
09005	B-C-C2-D-E-F-F3-H-M-P-R-S	09014	B-C-C2-D-E-F3-H-M-P-R-S-U	09034	B-C-C2-D-E-F-F3-H-M-R-S-U	09069	A-B-C-C2-D-E-F3-H-N-R-S-U-V
09006	B-C-C2-D-E-F-F3-H-M-R-S-U	09015	A-B-C-C1-C2-F-F1-F3-J-L-M-N-R-R1-S-V-Z1	09044	B-C-C2-D-F-F3-H-R-S-U	09079	B-C-C2-D-E-F-F3-H-M-R-S-U
09008	A-B-C2-F-F3-H-N-R-S-V-Z-Z1	09016	B-C-C2-D-E-F1-F3-H-M-R-S-U	09046	B-C-C2-D-E-F-F3-H-M-R-S-U	09094	B-C-C2-D-F3-H-M-P-R-S-Z1
09009	B-C-C2-D-E-F3-H-M-R-S-U-Z1	09017	A-B-C2-F-F3-H-N-R-S-V-Z-Z1	09049	B-C-C2-D-E-F-F3-H-M-R-S-U	09095	B-C-C2-D-E-F-F3-H-M-R-S-U
09010	B-C-C2-D-E-F-F3-H-M-R-S-U2			09053	B-C-C2-D-E-F-F3-H-M-R-S-U	09096	B-C-C2-D-E-F-F3-H-M-R-S-U

APO/ FPO/ DPO	See Restrictions	APO/ FPO/ DPO	See Restrictions	APO/ FPO/ DPO	See Restrictions	APO/ FPO/ DPO	See Restrictions
09101	A-B-C-C2-F-F3-H-N-Q-R-S-V-Z-Z1	09179	A-B-C-C1-C2-F-F1-F3-J-L-M-N-R-R1-S-T-V-X-Z1	09284	A-B-C-C2-F-F3-I3-L-M-N-R-S-T-V-X-Z-Z1	09330	A-B-C1-C2-D-E-E2-F-F1-F3-H-H1-M-R-R1-S-V-Z1
09103	A-B-C-C2-F-F3-H-N-R-S-V-Z-Z1	09180	B-C-C2-D-E-F-F3-H-M-R-S-U	09285	A-B-C-E-E-1-F1-F3-H-I3-L-M-N-R-S-T-V-X-Z-Z1	09333	A-B-C-C1-C2-E2-F-F1-F3-H1-I3-M-N-R-R1-S-V-V1-Z-Z1
09104	B-C-C2-D-F3-H-M-R-S-U-Z1	09186	B-C-C2-D-E-F-F3-H-M-P-R-S-U	09287	B-C2-E1-F1-F3-J-L-M-N-R-S-T-V-X-Z1	09343	A-B-C1-C2-F-F3-M-N-R-R1-S-V-Z1
09107	B-C-C2-D-E-F-F3-H-M-R-S-U	09203	A-B-C-C1-C2-F-F1-F3-I3-J-L-M-N-R-R1-T-V-Z-Z1	09288	A-B-C-C1-C2-E2-F1-F3-H-H1-J-L-M-N-R-R1-S-T-V-X-Z1	09348	A-B-C1-E2-F-F1-F3-H1-I3-M-N-R-R1-S-T-V-Z1
09112	B-C-C2-D-E-F-F3-H-M-R-S-U	09204	B-C-F3-M-N-R-S-V-Z1	09289	B-E2-F1-F3-H1-J-L-M-N-R-R1-S-T-U2-V-X-Z1	09357	A-B-C1-E2-F-F3-H1-M-R-V-Z1
09114	B-C-C2-D-E-F-F3-H-M-R-S-U	09205	A-B-C-C2-E2-F-F3-M-N-R-S-T-V-X	09290	A-B-F1-F3-J-L-M-N-R-S-T-U2-V-X-Z1	09365	A-B-C-C1-E2-F-F3-H1-M-N-R-V-Z1
09115	A-B-C2-F-F3-H-N-R-S-V-Z1	09211	B-C-C2-D-E-F-F3-H-M-P-R-S-U	09291	B-C-C1-C2-E2-F1-F3-H1-L-N-R-R1-S-T-V-X-Z1	09366	A-B-C-C1-E2-F-F1-F3-H-H1-M-R-R1-S-V-Z1
09116	A-B-C2-F-F3-H-N-R-S-V-Z1	09213	B-C2-F-F1-F3-H-J-L-M-N-R-R1-T-U-V-Z1	09292	A-B-C-C2-E-E2-E3-F1-F3-H-H1-J-L-M-N-R-R1-S-T-V-X-Z1	09401	B-C-C1-C2-F3-M-R-S-U-Z1
09123	B-C-C2-D-E-F3-H-M-R-S-U-Z1	09214	B-C-C2-D-E-F3-H-M-R-S-U-Z1	09293	A-B-C-C1-C2-E-E2-F1-F3-I3-L-M-N-R-S-T-V-X-Z1	09403	B-C-C1-C2-F3-M-R-S-U-Z1
09126	B-C-C2-F3-H-M-P-R-S-Z1	09216	B,C,F1,F3,M,N,R,S,V,Z1	09294	B-C-C1-C2-E2-F1-F3-H1-L-N-R-R1-S-T-V-X-Z1	09410	C-C2-F-F1-F3-N-R-S-U2
09128	B-C-C2-D-E-F-F3-H-M-R-S-U	09227	B-C-C2-D-E-F-F3-H-M-R-S-U	09295	B-C-C1-C2-E2-F1-F3-H1-L-N-R-R1-S-T-V-X-Z1	09421	B-C-C1-C2-F3-M-R-S-U-Z1
09131	B-C-C2-D-E-F-F3-H-M-R-S-U	09240	A-B-C1-C2-F-F3-H-N-R-S-V	09301	A-B-C1-C2-E2-F-F1-F3-H1-I3-L-M-N-R-R1-S-T-U4-V-Z-Z1	09447	B-C-C1-C2-F3-M-R-S-U-V-Z1
09135	A-B-C2-F-F3-H-N-R-S-U-V-Z1	09241	A-B-C-C2-F3-N-R-S-U-Z1	09305	A-B-C1-E2-F-F1-F3-H1-I3-M-N-R-R1-S-T-V-Z-Z1	09454	B-C-C1-C2-F3-M-R-S-U-V-Z1
09136	B-C-C2-D-E-F-F3-H-M-P-R-S-U	09242	A-B-C1-C2-F-F3-H-N-R-S-V	09306	A-B-C1-E2-F-F1-F3-H1-R-R1-S-U2-V-Z1	09456	B-C-C1-C2-F3-M-N-R-S-U-V-Z1
09138	B-C-C2-D-F-F3-H-M-R-S-U	09250	B-C-C2-D-E-F-F3-H-M-R-S-U	09307	B-C-C2-F-F3-N-R-R1-S-Z1	09459	B-C-C1-C2-F3-M-R-S-U-Z1
09140	B-C-C2-D-E-F-F3-H-M-R-S-U	09261	B-C-C2-D-E-F-F3-H-M-N-R-S-U-V-Z1	09309	A-B-C-C1-C2-E2-F-F1-F3-H1-M-N-R-R1-S-V-Z1	09461	B-C-C1-C2-F3-M-P-R-S-U-Z1
09142	B-C-C2-D-E-F-F3-H-M-R-S-U	09263	B-C-C2-D-E-F-F3-H-M-R-S-U	09310	A-B-C1-C2-E2-F-F1-F3-H1-I3-L-M-N-R-R1-S-T-U4-V-Z-Z1	09463	B-C-C1-C2-F3-M-R-S-U-Z1
09154	B-C-C2-D-E-F-F3-H-M-R-S-U	09264	B-C-C2-D-E-F-F3-H-M-R-S-U	09311	A-B-C1-C2-E2-F-F1-F3-H1-I3-L-M-N-R-R1-S-T-U4-V-Z-Z1	09464	B-C-C1-C2-F3-R-S-U-Z1
09160	B-C-C2-D-F-F1-F3-H-J-L-M-N-R-R1-T-U-V-Z1	09265	B-C-D-F-F1-H-J-L-M-N-R-S-T-U-V-Z1	09312	A-B-C1-C2-E2-F-F1-F3-H1-I3-L-M-N-R-R1-S-T-U4-V-Z-Z1	09467	B-E-E1-F-F3-J-L-M-N-R-S-T-V-X-Z1
09170	A-B-C2-F-F1-F3-J-L-M-N-R-R1-S-T-V-X-Z1	09266	A-B-C2-F3-S-U-R-V-Z1	09315	A-B-C1-E2-F-F3-N-R-R1-S-V-Z1	09468	B-C-C1-C2-F3-M-R-S-U-Z1
09171	A-B-C1-C2-E3-F-F1-F3-J-L-M-N-R-R1-S-T-V-X-Z1	09276	A-B-F-F3-I3-L-M-N-R-S-T-V-X-Z1	09316	A-B-C1-E2-F-F1-F3-H1-I3-M-N-R-R1-S-T-V-Z1	09469	B-C-C1-C2-F3-R-S-U-Z1
09172	B-C-C2-D-E-F-F3-H-M-R-S-U	09277	A-B-E-E1-E2-F1-F3-I3-L-N-R-S-T-V-X-Z1	09321	A-B-C1-C2-E2-F-F3-H1-M-N-R-R1-S-V-Z1	09470	B-C-C1-C2-F3-M-R-S-U-Z1
09173	B-C-C2-D-E-F-F3-H-M-R-S-U	09278	A-B-F-F3-I3-L-M-N-R-S-T-V-X-Z1			09487	A-B-C-C1-C2-E2-F1-F3-I3-L-M-N-R-R1-S-T-V-W-X-Z1
09174	B-C-C2-F-F1-F3-L-N-R-R1-S-T-V-X-Z1	09279	A-B-E-E1-F-F3-I3-L-M-N-R-S-T-V-X-Z1			09488	A-B-C-C1-C2-E2-F3-J-L-M-N-S-T-V-W-X-Z1
09175	A-B-C1-C2-E2-F-F1-F3-H1-J-L-M-N-R-R1-S-T-V-W-X-Z1	09280	A-B-C-C1-C2-E-E2-F1-F3-H-I3-L-M-N-R-S-T-V-W-X-Z1			09489	A-B-C-C1-C2-E2-F1-F3-L-M-N-R-R1-S-T-V-W-X-Z1
09176	A-B-C2-F-F1-F3-J-L-M-N-R-R1-S-T-V-X-Z1	09281	A-B-C1-C2-E2-E3-F-F1-F3-H-H1-J-L-M-N-R-R1-S-T-V-X-Z1			09490	A-B-C1-C2-E2-F-F1-F3-H1-J-L-M-N-R-R1-S-T-V-X-Z1
09177	B-C-C2-D-E-F-F3-H-M-R-S-U	09282	A-B-C1-C2-E2-E3-F-F1-F3-H-H1-J-L-M-N-R-R1-S-T-V-X-Z1				
09178	B-C1-C2-E2-F1-F3-I3-L-M-N-R-S-T-V-X-Z1	09283	A-B-E-E1-F-F3-L-M-N-R-S-T-V-X-Z1				

APO/ FPO/ DPO	See Restrictions	APO/ FPO/ DPO	See Restrictions	APO/ FPO/ DPO	See Restrictions	APO/ FPO/ DPO	See Restrictions
09491	A-B-C1-C2-E2-F1-F3-H1-J-L-M-N-R-R1-S-T-V-Z1	09565	B-C-C2-F-F1-F3-R-R1-S-V	09606	B-C-C2-D-F-F3-H-M-R-S-U-V	09709	B-C1-C2-E2-F-F1-F3-H-H1-J-L-N-R-R1-T-V-Z1
09494	B-C-C1-C2-F3-M-R-S-U-Z1	09566	B-C-C2-E2-E3-F-F1-F3-R-R1-S-V	09608	B-C-F-F3-N-R-S-U-V-Z1	09710	B-C-C1-F-F1-J-L-M-N-R-R1-T-U-V-Z1
09498	B-C1-C2-F-F1-F3-J-L-N-R-R1-T-V-Z1	09567	B-C-C2-E2-E3-F-F1-F3-R-R1-S-V	09609	B-C-C2-F-F3-N-R-S-U-V-Z1	09711	A-B-C-C2-E2-F-F1-F3-M-N-R-S-T-V-X
09501	B-V	09568	B-C-C2-F-F1-F3-R-R1-S-V	09610	B-C-C2-F-F1-F3-M-R-S-U-V-Z1	09712	A-B-C2-F-F3-H-R-S-U-V-Z1
09502	B-V	09569	B-C-C2-E2-E3-F-F1-F3-R-R1-S-V-Z1	09613	B-C-C2-F-F3-N-R-S-U-V	09714	B-C-C1-C2-F-F3-M-R-R1-S-U
09503	B-F-F1-R-R1-V	09570	B-C-C2-F-F1-F3-R-R1-S-V	09614	A-B-C1-C2-E2-F-F1-F3-H1-J-L-M-N-R-R1-T-V-W-Z1	09715	B-F-F1-J-L-M-N-R-T-V-Z1
09504	B-V	09573	B-C-C2-E2-E3-F-F1-F3-R-R1-S-V-Z1	09618	B-C-C2-F-F3-R-S-U-Z1	09716	B-C-C2-F-F1-F3-J-L-M-N-R-R1-T-V-Z1
09505	B-V	09574	B-F-F1-R-R1-V	09620	B-C-C2-F-F3-R-S-U-V-Z1	09717	A-B-C-C2-F3-M-R-S-V-W-Z1
09506	B-V	09575	B-C-C2-F-F1-F3-R-R1-S-V	09621	B-C-F-F3-R-U-Z1	09718	B-F-F1-J-L-M-N-R-T-U-V-Z1
09507	B-V	09576	B-C-C2-F-F1-F3-R-R1-S-V	09622	B-C-C2-F-F3-R-S-U-Z1	09719	B-C-C2-D-F3-M-R-S-U-V-Z1
09508	B-C-C2-F-F3-R-R1-S-V	09577	B-C-C2-F-F1-F3-R-R1-S-V	09623	B-C-C2-F-F3-R-S-U-V-Z1	09720	B-C2-F3-M-R-S-U-V-Z1
09509	B-C-C2-F-F3-R-R1-S-V	09578	B-C-C2-F-F1-F3-R-R1-S-V	09624	B-C-C2-F-F1-F3-I3-L-N-R-R1-T-U-V-Z-Z1	09722	A-B-C-C2-F-F3-H-N-R-S-V-Z-Z1
09510	B-C-C2-F-F3-R-R1-S-V	09579	B-C-C2-F-F1-F3-R-R1-S-V	09625	B-C-C2-F-F3-N-R-S-U-Z1	09723	B-C2-F-F1-F3-J-L-M-N-R-R1-T-V-Z1
09511	B-C-C2-F-F3-R-R1-S-V	09581	B-C-C2-F-F1-F3-R-R1-S-V	09627	B-C-C2-F-F3-R-S-U-V-Z1	09724	B-C-C1-C2-F-F3-M-R-R1-S-U
09512	B-C-C2-F-F1-F3-R-R1-S-V	09582	B-C-C2-F-F1-F3-R-R1-S-V	09630	B-C-C2-F-F3-R-S-U-V	09725	A-B-C2-F-F3-H-N-Q-R-S-V-V1-Z-Z1
09513	B-C-C2-F-F1-F3-R-R1-S-V	09583	B-C-C2-F-F1-F3-R-R1-S-V	09633	B-C-C2-D-F-F3-M-R-S-U-U1-U2-U3-V-Z1	09726	B-F-F1-J-L-M-N-R-T-U-V-Z1
09514	B-C-C2-F-F1-F3-R-R1-V	09586	B-C-C2-F-F1-F3-R-R1-S-V	09634	A-B-C2-F-F3-M-N-R-S-V	09727	A-B-C1-C2-F-F1-F3-J-L-M-N-R-R1-T-V-Z1
09516	B-C-C2-F-F1-F3-R-R1-S-V	09587	B-C-C2-F-F1-F3-R-R1-S-V	09636	B-C-C2-F-F3-R-S-U-V-Z1	09728	A-B-C-C1-C2-F-F1-F3-J-L-N-R-R1-T-V-Z1
09517	B-C-C2-F-F1-F3-R-R1-S-V	09588	B-C-C2-F-F1-F3-R-R1-S-V	09642	B-C2-F-F1-F3-J-L-M-N-R-T-U-V	09729	B-C-C2-F-F3-N-R-R1-S-U-V-Z1
09520	B-F-F1-F3-R-R1-S-V	09589	B-F-F1-F3-R-S-V	09643	B-C-C2-F3-M-R-S-U-V-Z1	09730	A-B-C1-C2-F-F1-F3-J-L-M-N-R-R1-T-V-Z1
09522	B-F-F1-F3-R-S-V	09590	B-C-C2-F-F1-F3-R-R1-S-V	09645	B-C-C1-E1-E2-F-F1-F3-M-R-S-U-X-Z1	09731	A-B-C1-C2-F-F1-F3-J-L-M-N-R-R1-T-V-Z1
09523	B-C-C2-F-F1-F3-R-R1-S-V	09591	B-C-C2-F-F1-F3-R-R1-S-V	09647	B-C2-F1-F3-M-N-R-S-U-Z1	09732	B-F-F3-N-S-V-Z-Z1
09524	B-C-C2-F-F1-F3-R-R1-S-V	09592	B-C-C2-F-F1-F3-R-R1-S-V	09648	B-C2-F3-N-R-S-U-V-Z1	09733	B-F-F3-N-R-S-V-Z
09532	B-C-C2-F-F1-F3-R-R1-S-V	09593	B-F-F1-F3-R-S-V	09649	B-C2-F3-N-R-S-U-Z1	09734	A-B-C-C1-C2-F-F1-F3-I3-J-L-M-N-R-R1-T-V-Z1
09533	B-V	09594	B-C-C1-C2-F-F1-F3-R-R1-S-V	09701	A-B-C1-C2-F-F1-F3-J-L-M-N-R-R1-T-V-Z1	09735	B-F3-N-R-S-V-Z-Z1
09534	B-F-F1-F3-R-R1-S-V	09595	B-C-C2-F-F1-F3-I3-J-R-R1-S-V-V1-Z1	09702	B-C-C2-F-F1-M-R-R1-S-U	09736	A-B-C1-F-F1-F3-J-L-M-N-R-R1-T-V-Z1
09541	A-B-C-F-F3-M-N-S-V-Z1	09596	B-F-F1-R-R1-V	09704	B-C-F-F1-F3-R-R1-S-U2-V	09737	A-B-C1-C2-F-F1-F3-I3-J-L-M-N-R-R1-T-V-W-Y-Z-Z1
09542	A-B-C-F-F3-M-N-S-V-Z1	09599	B-F-F1-R-R1-V	09705	B-C-C1-C2-F1-F3-M-R-R1-S-U	09738	A-B-C1-C2-F-F1-F3-J-L-M-N-R-R1-T-V-Z1
09543	A-B-C-F-F3-M-N-S-V-Z1	09600	B-C-C2-F-F1-F3-R-S-U-Z1	09706	B-C-C2-F3-M-N-R-S-U-V-Z1	09739	A-B-C1-C2-F-F1-F3-J-L-M-N-R-R1-T-V-Z1
09544	A-B-C-F-F3-M-N-S-V-Z1	09602	B-C-C2-F-F1-F3-N-R-S-U-V	09707	B-C2-F-F1-F3-J-L-M-N-R-R1-T-V-Z1	09741	A-B-C1-C2-E2-F-F1-F3-H1-J-L-M-N-R-R1-T-V-W-Y-Z1
09545	A-B-C-F-F3-M-N-S-V-Z1	09603	B-C-C2-F-F1-F3-R-S-U-V	09708	B-C-C1-C2-F-F3-M-R-R1-S-U		
09550	B-C-C2-F-F1-F3-R-R1-S-V	09604	B-C-C2-F-F1-F3-P-R-S-U-V-Z1				
09554	B-C-C2-F-F1-F3-R-R1-S-V	09605	B-C-C2-D-F-F3-H-M-R-S-U-V				

APO/ FPO/ DPO	See Restrictions	APO/ FPO/ DPO	See Restrictions	APO/ FPO/ DPO	See Restrictions	APO/ FPO/ DPO	See Restrictions
09742	A-B-C2-F-F1-F3-J-L-M-N-R-S-T-V-Z1	09810	A-B-C2-F-F1-F3-N-R-S-V-Z1	09838	B-C-C2-E2-E3-F-F1-F3-R-S-U-Z1	09880	A-B-C1-C2-E2-F-F1-F3-H1J-L--N-R-R1-S-T-U-V-Z1
09743	A-B-C-C2-F-F3-H-N-R-S-V-Z1	09811	A-B-C-C2-E-E2-E3-F1-F3-H-H1-J-M-N-R-R1-S-U-V-Z1	09842	A-B-C1-C2-F-F1-F3-J-L-N-R-R1-T-V-Z1	09890	B-E2-F-H1-N-R-R1-U2-V-Z1
09744	A-B-C1-C2-F-F1-F3-J-L-M-N-R-R1-T-V-Z1	09812	B-E2-E3-F-F1-I-J-L-N-R-T-U-V-Z1	09844	A-B-C1-C2-F-F1-F3-J-L-M-N-R-R1-T-V-Z1	09892	A-B-C1-C2-E2-F-F1-F3-J-L-M-N-R-R1-T-V-Z1
09745	A-B-C2-F-F1-F3-M-N-R-R1-S-V-Z1	09813	A-B-C1-C2-E2-E3-F-F1-F3-J-L-N-R-R1-T-V-Z1	09846	A-B-C1-C2-F-F1-F3-J-L-N-R-R1-T-V-Z1	09895	A-B-C1-C2-E2-F-F1-F3-J-L-M-N-R-T-V-W-Z1
09748	A-B-C1-C2-F-F1-F3-J-L-M-N-R-R1-T-V-Z1	09814	B-C2-E2-E3-F-F1-F3-I3-J-L-N-R-R1-T-V-Z1	09847	B-C-C2-F-F1-F3-J-L-M-N-R-R1-S-T-V-Z1	09898	B-C-C1-C2-E2-F-F1-F2-H1-N-R-R1-S-U2-V-Z1
09749	A-B-C2-F-F3-H-N-R-S-U-V-Z1	09815	A-B-C-C2-E-E2-E3-F1-F3-H-H1-J-M-N-R-R1-S-U-V-Z1	09848	A-B-C2-F-F3-M-R-S-V-Z1	09902	A-B-C1-C2-E2-F-F3-H1-M-R-R1-S-V-Z1
09750	A-B-C1-C2-F-F1-F3-J-L-M-N-R-R1-T-V-Z1	09816	A-B-C1-C2-E2-E3-F-F1-F3-J-L-N-R-R1-T-V-Z1	09853	B-C1-C2-E2-F-F1-F3-H1-N-R-R1-S-U2-V-Z1	09903	B-C1-E2-F1-F3-S-V-Z1
09751	B-C-C2-D-E-F-F3-H-M-R-S-U	09817	A-B-C1-C2-E2-E3-F-F1-F3-H-H1-J-L-M-N-R-R1-T-V-Z1	09854	A-B-C1-C2-F-F1-F3-J-L-N-R-R1-S-T-V-Z1	09904	B-C1-E2-F1-F3-S-V-Z1
09752	B-C-C2-D-F-F3-H-R-S-U	09818	A-B-C-C2-F-F3-M-R-S-V-Z1	09855	A-B-C-C1-C2-E2-F-F1-F3-H1-M-R-R1-S-U2-V-Z1	09908	A-B-C2-F-F1-F3-N-R-R1-S-V-Z1
09753	A-B-C-C1-C2-D-E-F1-F3-H-M-N-R-S-V-W-Z1	09819	A-B-C-C1-C2-E2-F-F1-F3-H-H1-M-R-R1-S-V-Z1	09857	A-B-C2-E2-F-F1-F3-13-L-M-N-R-R1-S-T-V-Z1	09909	A-B-C2-F-F1-F3-N-R-R1-S-V-V1-Z1
09754	A-B-C-C2-F-F3-H-N-R-S-V-Z1	09820	A-B-C2-F-F1-F3-H-H1-J-L-M-N-R-R1-T-V-Z1	09858	A-B-C-C1-C2-E2-E3-F1-F3-H-H1-J-M-N-R-R1-S-U-V-Z1	09974	B-F1-F3-J-L-M-N-R-S-T-U2-V-X-Z1
09755	A-B-C-C1-C2-D-F-F1-F3-J-L-M-N-Q-R-R1-S-T-V-Z1	09821	A-B-C-C2-F-F3-N-R-S-V-Z1	09859	B-C-C1-C2-E2-E3-F-F1-F3-H1-R-R1-S-U-Z1	09975	B-F1-F3-I3-L-M-N-R-S-T-U2-V-X-Z1
09759	A-B-C-C1-C2-E2-F-F1-F3-J-L-N-R-R1-T-V-Z1	09822	A-B-C-C2-F-F3-M-R-S-V-Z1	09860	A-B-C2-F-F1-F3-J-L-M-N-R-R1-S-T-V-Z1	09976	B-F1-F3-J-L-M-N-R-S-T-U2-V-X-Z1
09761	B-C2-F-F1-F3-M-R-R1-S-V-Z1	09823	A-B-C1-C2-F-F1-F3-J-L-M-N-R-R1-T-V-Z1	09862	A-B-C-C2-F-F1-F3-I3-L-M-N-R-R1-S-T-V-X-Z1	09977	B-F1-F3-J-L-M-N-R-S-T-U2-V-X-Z1
09762	A-B-C2-E3-F-F1-F3-J-L-N-R-R1-T-V-Z1	09824	A-B-C-C2-F-F3-M-R-S-V-Z1	09864	A-B-C-C1-C2-E2-F1-F3-L-M-N-R-R1-S-T-V-W-Z1	09978	B-C-C2-D-E1-F-F1-F3-H-H1-M-N-R-R1-S-T-X-Z1
09769	A-B-C-C1-C2-F-F1-F3-J-L-M-N-R-R1-T-V-Z1	09825	A-B-C1-C2-F-F1-F3-J-L-M-N-R-R1-T-V-Z1	09866	A-B-C-C1-C2-E2-F1-F3-L-M-N-R-R1-S-T-V-W-Z1	09980	B-C-C1-C2-F1-F3-J-L-M-N-R-R1-S-T-V-X-Z1
09777	A-B-C-C1-C2-E1-F-F1-F3-J-L-M-N-R-R1-T-V-Z1	09826	A-B-C1-C2-E1-E2-E3-F-F1-F3-J-L-M-N-R-R1-T-V-W-Z1	09869	A-B-C1-C2-E2-F1-F3-L-M-N-R-R1-S-T-V-W-Z1	09981	B-C-C1-C2-F1-F3-J-L-M-N-R-R1-S-T-V-X-Z1
09780	A-B-C2-F-F3-H-N-R-S-V	09827	A-B-F-F1-J-L-M-N-R-T-V-Z1	09870	A-B-C1-C2-E2-F-F1-F3-H1-I3-L-M-N-R-R1-S-T-U4-V-Z1	09982	B-C-C1-C2-F1-F3-J-L-M-N-R-R1-S-T-V-X-Z1
09801	A-B-C1-E2-F-F3-H1-M-N-R-R1-S-V-Z1	09828	A-B-C1-C2-F-F1-F3-I3-L-N-R-R1-T-V-Z1	09873	A-B-C1-C2-E2-F-F1-F3-H1-I3-L-M-N-R-R1-S-T-U-U4-V-Z1	09984	B-C-C1-C2-F1-F3-J-L-M-N-R-R1-S-T-V-X-Z1
09802	A-B-C-C2-D-F-F1-F3-H-H1-I3-L-M-N-R-R1-S-T-V-W-Z1	09829	B-C-N-R-V-Z1	09874	A-B-C1-C2-E2-F-F1-F3-H1-I3-L-M-N-R-R1-S-T-U-U4-V-Z1	34001	A-B-C1-C2-F-F1-F3-J-L-M-N-R-R1-S-T-V-Z1
09803	A-B-C-C2-E-E2-E3-F1-F3-H-H1-J-M-N-R-R1-S-U-V-Z1	09830	B-C-F-F1-F3-J-L-M-N-R-R1-S-T-V-Z1	09875	A-B-C1-C2-E2-F-F1-F3-H1-I3-L-M-N-R-R1-S-T-U-U4-V-Z1	34002	B-C1-C2-F-F1-F3-J-L-M-N-R-R1-T-V-Z1
09804	A-B-C-C2-F-F1-F3-M-N-R-S-V-Z1	09831	B-C1-C2-F-F1-F3-J-L-N-R-R1-T-V-Z1	09877	A-B-C-C2-E-E2-E3-F1-F3-H-H1-J-M-N-R-R1-S-U-V-Z1	34004	B-C1-C2-F-F1-F3-J-L-M-N-R-R1-T-V-Z1
09805	B-C-C2-E2-E3-F-F1-F3-R-R1-S-Z1	09832	A-B-C-C1-C2-E2-E3-F1-F3-H-H1-J-M-N-R-R1-S-V-Z1			34007	B-F-F1-H-J-M-N-R-R1-V-Z1
09807	A-B-C1-C2-E2-F-F1-F3-H1-I3-M-N-R-R1-S-T-V-Z1	09834	B-C-C2-E2-E3-F-F1-F3-R-R1-S-U-Z1			34008	B-C1-C2-D-E1-F-F1-H-H1-J-L-M-N-R-R1-T-V-Z1
09808	A-B-C1-C2-E2-F-F1-F3-H-H1-J-L-N-R-R1-T-V-Z1	09836	A-B-C1-C2-F-F1-F3-J-L-M-N-R-R1-V-Z1			34009	B-C2-F-F1-F3-R-S-V
09809	B-C1-C2-E3-F-F1-F3-J-L-N-T-V-Z1	09837	B-E2-E3-F1-F3-R-S-V-Z1				

APO/ FPO/ DPO	See Restrictions	APO/ FPO/ DPO	See Restrictions	APO/ FPO/ DPO	See Restrictions	APO/ FPO/ DPO	See Restrictions
34010	B-C2-F-F1-F3-R-S-V	34072	B-C-C2-F1-F3-J-L-M-N-R-S-T-V-X-Z1	96251	A-B-F-F1-F3-M-R-S-U	96343	A-B-F-F3-M-P-R-S-U2
34011	B-C1-C2-E2-F-F1-F3-J-L-M-N-R-R1-T-V-Z1	34078	B-F1-F3-N-R-S-V-Z1	96257	A-B-F-F1-F3-S-U	96346	B-F-F1-F2-F3-H-M-R-S-W-Z1
34020	B-C1-C2-F-F1-F3-J-L-M-N-R-R1-T-V-Z1	34080	B-F-F1-R-R1-V	96258	A-F-F3-M-P-R-S-U	96347	B-C2-F-F1-F2-F3-H-M-R-S-W-Z1
34021	B-C1-C2-F-F1-F3-J-L-M-N-R-R1-T-V-Z1	34081	B-F-F1-R-R1-V	96260	A-B-F-F1-F3-M-R-S-U	96349	B-C-C2-F-F1-F2-F3-H-M-R-S-Z1
34022	B-C1-C2-F-F1-F3-J-L-M-N-R-R1-T-V-Z1	34082	B-F-F1-R-R1-V	96262	A-B-C2-F-F1-F3-R-S-U-V-Z1	96350	B-F-F1-F2-F3-H-M-R-S-W-Z1
34023	B-C1-C2-F-F1-F3-J-L-M-N-R-R1-T-V-Z1	34083	B-F-F1-R-R1-V	96264	A-B-C-C2-F1-F3-R-S-U	96351	B-C-C2-F-F1-F2-F3-H-M-R-R1-S-T-Z1
34024	B-C1-C2-F-F1-F3-J-L-M-N-R-R1-T-V-Z1	34084	B-F-F1-R-R1-V	96266	A-B-C-C2-F1-F3-R-S-U	96362	B-C2-F-F1-F2-F3-H-M-R-S-W-Z1
34025	B-F-F1-F3-J-L-M-N-R-R1-T-V-Z1	34085	B-C-C1-C2-E2-E3-F1-F3-H1-J-R-R1-S-T-V-V1	96269	A-B-C-C2-F1-F2-F3-R-S-U-Z1	96365	B-C-C2-F3-M-R-S-W-V
34030	B-C1-C2-F-F1-F3-J-L-M-N-R-R1-T-V-Z1	34086	B-C-C1-C2-E2-E3-F1-F3-H1-J-R-R1-S-T-V-V1	96271	A-B-F-F3-M-P-R-S-U	96367	B-C-C2-F3-L-M-R-S-W
34031	B-C1-C2-F-F1-F3-J-L-M-N-R-R1-T-V-Z1	34087	B-C-C2-E2-F-F1-F3-R-R1-S-V	96273	A-B-C2-F-F1-F3-M-R-S-U	96368	B-C-C2-F3-M-R-S-W
34032	B-C1-C2-F-F1-F3-J-L-M-N-R-R1-T-V-Z1	34088	B-C-C2-F-F1-F3-R-R1-S-V	96275	A-B-F-F1-F3-M-R-S-U	96370	B-F-F1-F2-H-M-W-Z1
34033	B-C1-C2-F-F1-F3-I3-L-M-N-R-T-V-Z1	34089	B-C-C2-F-F1-F3-R-R1-S-V	96276	A-B-C-C2-F1-F3-R-S	96371	B-C-C2-F-F3-M-R-S-W
34034	B-C1-C2-F-F1-F3-I3-L-M-N-R-R1-T-V-Z1	34090	B-C-C2-F-F1-F3-R-R1-S-V	96278	A-B-C-C2-F1-F3-R-S-U	96372	B-C-C2-F-F3-M-R-S-W
34035	B-C1-C2-F-F1-F3-H-J-L-M-N-R-R1-T-V-Z1	34091	B-C-C2-E2-E3-F-F1-F3-R-R1-S-V-Z1	96283	A-B-F-F1-F3-S-U	96373	B-C-C2-F-F3-M-R-S-W
34036	B-C1-C2-F-F1-F3-J-L-M-N-R-R1-T-V-Z1	34092	B-C-C2-F-F1-F3-R-R1-S-V-Z1	96284	A-B-C2-F-F1-F3-M-R-S-U	96374	B-C-C2-F-F3-M-R-S-W
34037	B-C-C1-C2-F-F1-F3-H-J-L-M-N-R-R1-T-V-Z1	34093	B-C-C2-F-F1-F3-R-R1-S-V	96297	A-B-F-F1-F3-R-S-U	96375	B-C-C2-F-F3-M-R-S-W
34039	B-C1-C2-F-F1-J-L-M-N-T-V-Z1	34094	B-F-F1-F3-R-R1-S-V	96300	A-B-F3-M-R-S-V-Z1	96376	B-C-C2-F-F3-M-R-S-W
34041	B-C1-C2-F-F1-F3-J-L-M-N-R-R1-T-V-Z1	34095	B-F-F1-R-R1-V	96301	A-B-C-C2-F-F3-M-N-R-S-U2-W	96377	B-C-C2-F-F3-M-R-S-W
34042	A-B-C-F-F1-F3-M-N-R-S-U-V-W-Z1	96201	A-B-F-F1-F3-M-R-S-U	96303	B-C1-C2-F-F1-H-J-L-M-N-T-V-W-Z1	96378	B-C-C2-F-F3-M-R-S-W
34050	B-V	96202	A-B-C2-F-F1-F3-M-R-S-U	96306	B-F-F1-F2-F3-H-M-R-S-W-Z1	96379	B-C-C2-F-F3-M-R-S-W
34051	B-V	96203	A-B-F-F1-F3-M-R-S-U	96309	B-C-C2-F-F1-F3-M-N-R-S-V-W	96380	B-C-C2-F-F3-M-R-S-W
34052	B-V	96204	A-B-F-F1-F3-M-R-S-U	96310	B-C-C2-F-F3-M-R-S-W	96382	B-C-C2-F-F3-M-R-S-W
34053	B-V	96205	A-B-C-C2-F-F1-F3-M-R-S-U	96311	B-C-C2-F-F3-M-R-S-W	96384	B-C-C2-F-F3-M-R-S-W
34054	B-V	96206	A-B-C-C2-F-F1-F3-M-R-S-U	96315	B-C-C2-F-F3-M-R-S-W	96385	B-C-C2-F-F3-M-R-S-W
34055	B-C1-C2-F-F1-F3-J-L-M-N-R-R1-T-V-Z1	96207	A-B-F-F1-F3-M-R-S-U-V	96319	B-C-C2-F3-M-R-S-W	96386	B-C-C2-F-F3-M-R-S-W
34058	B-C2-F-F1-F2-F3-R-R1-S-V-Z1	96208	A-B-F-F1-F3-M-R-S-U	96321	B-F-F1-F2-F3-H-M-R-S-W-Z1	96387	B-C-C2-F-F3-M-R-S-W
34060	B-C1-C2-E2-F-F1-F3-J-L-M-N-R-R1-T-V-Z1	96209	A-B-C1-C2-F-F1-J-L-M-N-T-U-V-Z1	96322	B-F-F1-F2-F3-H-M-R-S-W-Z1	96388	B-C-C2-F-F3-M-R-S-W
34066	B-C1-C2-F-F1-F3-I3-J-L-M-N-R-R1-S-T-V-X-Z1	96210	A-B-C1-C2-F-F1-F3-I3-L-M-N-R-R1-T-V-Z1	96326	B-C-C2-F-F3-M-R-S-W	96389	B-C-C2-F-F3-M-R-S-W
34067	B-C1-C2-F-F1-F3-J-L-M-N-R-R1-S-T-V-X-Z1	96212	B-F-F1-F2-H-M-W-Z1	96328	B-C-C2-F3-M-R-S-W	96401	B-C-F-F3-N-R-S-V-V1-Z1
34068	B-C1-C2-F-F1-F3-J-L-M-N-R-R1-S-T-V-X-Z1	96213	A-B-C-C2-F1-F3-N-R-S	96331	A-B-C-C2-F-F1-F3-J-L-M-N-R-S-U2-W	96502	A-B-C-C1-C2-F-F1-F3-J-M-N-R-R1-S-T-U-V
34069	B-C1-C2-F-F1-F3-I3-J-L-M-N-R-R1-S-T-V-X-Z1	96214	A-B-C-C2-F1-F3-R-S-U	96336	B-C-C2-F3-M-R-S-V-W		
		96218	A-B-F-F1-F3-M-R-S-U	96337	B-C2-F-F1-F3-M-R-R1-S-W		
		96224	A-B-F-F1-F3-M-R-S-U	96338	A-B-C-C2-F-F3-M-R-S-U2-W		
				96339	A-B-F-F3-M-R-S-U2-W		

APO/ FPO/ DPO	See Restrictions	APO/ FPO/ DPO	See Restrictions	APO/ FPO/ DPO	See Restrictions	APO/ FPO/ DPO	See Restrictions
96504	A-B-C-C1-C2-F-F1-F3-I3-L-M-N-R-R1-T-V-W-Z-Z1	96551	A-B-C1-C2-F-F1-H-J-L-M-N-R-R1-S-T-V-Z1	96616	B-C2-F-F1-F3-R-R1-S-V	96669	B-C-C2-F-F1-F3-R-R1-S-V
96505	A-B-C-C1-C2-F-F1-F3-I3-L-M-N-R-R1-S-T-V-W-Z-Z1	96552	B-Z1	96619	B-F1-F3-R-S-V	96670	B-C-C2-F-F1-F3-R-R1-S-V
96507	A-B-C1-C2-F-F1-H-J-L-M-N-T-V-Z1	96553	A-B-C-C2-F-F1-F3-H-M-N-R-S-U	96620	B-C-C2-F-F1-F3-R-R1-S-V	96671	B-C-C2-F-F1-F3-R-R1-S-V
96510	B-I3-N-V	96554	A-B-C1-C2-F-F1-H-J-L-M-N-R-R1-S-T-V-Z1	96628	B-C-C2-F-F1-F3-R-R1-S-V	96672	B-C-C2-F-F1-F3-R-R1-S-V
96511	B-I3-N-V	96555	A-B-F-F3-M-R-S-V	96629	B-C-C2-F-F1-F3-R-R1-S-V	96673	B-C-C2-F-F1-F3-R-R1-S-V
96515	B-C-D-E1-F-F1-F3-H-H1-M-N-R-S-T-Z1	96557	A-B-F-F3-M-R-S-V	96632	B-C-C2-F-F1-F3-R-R1-S-V	96674	B-C-C2-F-F1-F3-R-R1-S-V
96516	B-C-C2-D-E1-E2-F-F1-F3-H-H1-M-N-R-S-T-Z1	96562	A-B-C1-C2-D-E2-E3-F-F1-H-H1-I3-L-M-N-R-R1-S-T-V-Z-Z1	96633	B-V	96675	B-C-C2-F-F1-F3-R-R1-S-V
96517	B-C-D-E1-E2-F-F1-F3-H-H1-M-N-R-T-U-V-Z1	96577	A-B-C2-F-F3-H-M-N-R-S-U	96641	B-V	96677	B-C-C2-F-F1-F3-R-R1-S-V
96520	B-F-N-U3-V	96578	B-F1-F3-H-J-N-R-S	96642	B-V	96678	B-C-C2-F-F1-F3-R-R1-S-V
96521	B-C1-C2-F-F1-J-L-M-N-R-R1-S-T-V-Z1	96595	B-F-F3-R-S-V-Z1	96643	B-F-F1-F3-R-R1-S-V	96679	B-C-C2-F-F1-F3-R-R1-S-V
96530	A-B-C1-C2-F-F1-H-H1-J-L-M-N-R-R1-S-T-V-Z1	96598	B-C2-F3-I3-N-R-S-V-V1	96644	B-V	96681	B-V
96531	A-B-C-C2-F-F1-F3-H-M-N-R-S-U-V	96599	B-C2-F3-N-R-S-V	96645	B-V	96682	B-C-C2-F-F1-F3-R-R1-S-V
96532	A-B-C1-C2-F-F1-H-J-L-M-N-R-R1-S-T-V-Z1	96601	B-V	96649	B-C-C2-F-F1-F3-R-R1-S-V	96683	B-C-C2-F-F1-F3-R-R1-S-V
96534	A-B-C-C2-F-F1-F2-F3-R-R1-S-U-V-Z1	96602	B-V	96650	B-F-F1-R-R1-V	96686	B-C-C2-F-F1-F3-R-R1-S-V
96535	A-B-C1-C2-F-F1-J-L-M-N-R-R1-S-T-V-Z1	96603	B-V	96657	B-C-C2-F-F1-F3-R-R1-S-V	96691	B-C-C2-F-F1-F3-R-R1-S-V
96537	B-V-Z1	96604	B-V	96660	B-C-C2-F-F1-F3-R-R1-S-V	96692	B-C-C2-F-F1-F3-R-R1-S-V
96540	B-F1-F2-F3-S-V-Z1	96605	B-V	96661	B-C-C2-F-F1-F3-R-R1-S-V	96693	B-C-C2-F-F1-F3-R-R1-S-V
96542	B-F-F1-F2-F3-S-V-Z1	96606	B-C-C2-F-F3-M-R-S-V-W	96662	B-C-C2-F-F1-F3-R-R1-S-V	96694	B-C-C2-F-F1-F3-I3-J-R-R1-S-V-Z
96543	B-F-F1-F2-F3-P-S-V-Z1	96607	B-V	96663	B-C-C2-F-F1-F3-R-R1-S-V	96695	B-C-C2-F-F1-F3-R-R1-S-V
96548	A-B-C2-F-F1-F3-H-M-R-S-U	96608	B-E2-F-H1-R1-U2-V-Z1	96664	B-C-C2-F-F1-F3-R-R1-S-V	96696	B-F-F1-R-R1-V
96549	A-B-C1-C2-F-F1-H-J-L-M-N-R-R1-S-T-V-Z1	96609	B-E2-F-H1-R1-U2-V-Z1	96665	B-C-C2-F-F1-F3-R-R1-S-V	96698	B-C-C2-F-F1-F3-R-R1-S-V
96550	A-B-H-M-N-U-V-Z1	96610	B-C-C2-F-F3-H1-R-R1-S-U2-V-Z1	96666	B-C-C2-F-F1-F3-R-R1-S-V		
		96611	B-C-C2-F-F3-H1-R-R1-S-U2-V-Z1	96667	B-C-C2-F-F1-F3-R-R1-S-V		
		96612	B-C-C2-F-F3-H1-R-R1-S-U2-V-Z1	96668	B-C-C2-F-F1-F3-R-R1-S-V		
		96613	B-C-C2-F-F3-H1-R-R1-S-U2-V-Z1				
		96615	B-F-F1-R-R1-V				

RESTRICTIONS

LEGEND

PS Form 2976, *Customs — CN 22 (Old C 1) and Sender's Declaration* (green label)

PS Form 2976-A, *Customs Declaration and Dispatch Note*

PS Form 2976-B, *Priority Mail Express International Shipping Label and Customs Form*

ATF	= Bureau of Alcohol, Tobacco, Firearms, and Explosives
Box C	= Department of State (DOS) contractor personnel
Box R	= Retired military personnel
DPO	= Diplomatic Post Office
MPO	= Military Post Office
PACT	= Prevent All Cigarette Trafficking Act
PAL	= Parcel Airlift
PMEMS	= Priority Mail Express Military Service
PUB 52	= Publication 52, <i>Hazardous, Restricted, and Perishable Mail</i>
SAM	= Space Available Mail
USDA	= United States Department of Agriculture

Note: Mail order catalogs are prohibited as SAM or PAL mail.

A. Securities, currency, or precious metals, including in their raw, unmanufactured state, are prohibited. Official Mail shipments are exempt from this restriction.

A1. Reserved for future use.

A2. Reserved for future use.

B. Other than for PMEMS and the exceptions listed below, a customs declaration PS Form 2976 or PS Form 2976-A is required for all items weighing 16 ounces or more, and for all items (regardless of weight) containing potentially dutiable mail contents (e.g., merchandise or goods) addressed to or from this ZIP Code. Other than the exceptions listed below, all PMEMS mailpieces (regardless of mail contents or weight) addressed to or from this ZIP Code must bear a properly completed PS Form 2976-B. The surface area of the address side of the mailpiece must be large enough to contain the applicable customs declaration. The following exceptions apply to known mailers, who for this purpose are defined as follows:

- Business mailers who enter volume mailings through business mail entry units or other bulk mail acceptance locations, pay postage through advance deposit accounts, use permit imprints for postage payment, and submit completed postage statements at the time of entry that certify that the mailpieces contain no dangerous materials that are prohibited by postal regulations. Such business mailers are exempt from providing customs documentation on non-dutiable letters and printed matter.
- All federal, state, and local government agencies whose mailings are regarded as "Official Mail." Such agencies are exempt from providing customs documentation, except for any items addressed to an MPO or DPO to which restriction "B2" applies.

B2. All federal, state, and local government agencies must complete customs documentation when sending potentially dutiable mail addressed to or from this MPO or DPO.

C. Cigarettes and other tobacco products, including tobacco leaves, chewing and pipe tobacco, snuff, and cigars are prohibited, including those that are authorized in Publication 52 under PACT.

C1. Obscene and horror articles, images, prints, paintings, cards, films, videotapes, comic books, etc., are prohibited.

C2. E-cigarettes and related products (e.g., nicotine liquids, e-liquids, parts, or supplies) are prohibited.

D. Coffee is prohibited.

E. Medicines (prescription, over-the-counter, vitamins, and supplements) are prohibited when mailed to individuals for human or animal use. This prohibition does not apply when medicines are sent as Official Mail only between specifically designated agencies such as pharmaceutical distributors, hospitals, clinics, and pharmacies.

E1. Mailers are responsible to ensure that all medicines and vaccines conform to host nation laws.

E2. Any matter depicting nude or seminude persons, pornographic, or sexual items are prohibited. Non-authorized political materials are prohibited. Religious materials contrary to the Islamic faith are prohibited in bulk quantities, but individual items for the personal use of the addressee are permissible.

E3. Radio transceivers, cordless/cellular telephones, global positioning systems, scanners, base stations, and handheld transmitters are prohibited.

F. Firearms of any type are prohibited, except firearms mailed to or by official U.S. government agencies. This restriction does not apply to firearms mailed from this MPO ZIP Code, provided ATF and USPS regulations are met. Antique firearms do not require an ATF form.

F1. Weapons of any type are prohibited.

F2. Mailing firearms to or from this MPO ZIP Code is restricted to one shotgun and one single shot .22 caliber rifle per individual.

F3. Replica weapons and inert explosive devices (such as grenades) and weapons parts are prohibited.

G. Parcels of any class are prohibited.

H. Meats, including preserved meats, bones, skin, hair, feathers, horns or hoofs of hoofed animals, and wool samples whether hermetically sealed or not, are prohibited.

H1. Pork or pork by-products are prohibited.

I. Reserved for future use.

I1. Reserved for future use.

I2. Reserved for future use.

I3. Mail of all classes must fit in a mail sack. Mail may not exceed the following dimensions:

- Maximum length 27 inches.
- Maximum width 14 inches.
- Maximum height 14 inches.

J. Standard Post and Parcel Select parcels may not exceed 108 inches in length and girth combined.

K. Reserved for future use.

L. All Official Mail is prohibited.

M. Fruits, vegetables, live animals, and live plants are prohibited.

N. Registered Mail service is prohibited.

O. Reserved for future use.

P. Official Mail only.

Q. Mail may not exceed 66 pounds, and size is limited to 42 inches maximum length and 72 inches maximum length and girth combined.

R. All alcoholic beverages, including those mailable under Publication 52, Part 421, are prohibited.

R1. Materials used in the production of alcoholic beverages (i.e., distilling material, hops, malts, yeast, etc.) are prohibited.

S. Synthetic cannabinoids used to stimulate the central nervous system commonly known as "synthetic marijuana," "K2," or "Spice" are prohibited.

T. Mailings of household shipments and case lots of food to or from an MPO require military transportation office approval prior to mailing. Mailings to or from a DPO require pre-approval from the Diplomatic Pouch and Mail Director.

U. Mail addressed to Retirees (Box R) is limited to 16 ounces and up to a 90-day supply of TRICARE medications. This restriction does not apply to mail endorsed "Free Matter for the Blind or Handicapped."

U1. Mail is limited to First-Class Mail items, including audio and video media, weighing 13 ounces or less. This limitation does not apply to Official Mail.

U2. Retirees (Box R) are not authorized mail service.

U3. Reserved for future use.

U4. Mail addressed to Box C is limited to 2 lbs.

V. PMEMS is not available.

V1. Electronic Delivery status information for Extra Services is not available on *USPS.com*. Manual record of delivery may be available upon request.

W. Hermetically sealed packages of meat products bearing USDA certification, such as dried beef, salami, and sausage, may be mailed. 200 grams of tobacco per parcel are permitted duty free.

X. Cremated remains are prohibited.

Y. Mail is limited to First-Class Mail and Priority Mail items only. This restriction also applies to Official Mail.

Z. No outside pieces (OSPs).

Z1. The following restriction is applicable only to International Service Centers (ISC)/Exchange Offices. An Anti-Pilferage Seal (Item No O817E or O818A) is required on all pouches and sacks.

— *International Network Operations,
Global Business, 12-29-22*

Freely Associated States Restrictions

We list the mailing restrictions for Freely Associated States (FAS) in the Pull-Out section of the *Postal Bulletin*. All FAS Restrictions will be updated periodically.

Freely Associated States

Mail addressed to freely associated states is subject to certain conditions or restrictions of mailing regarding content, preparation, and handling. The following FAS Restrictions table outlines these conditions as listed by each affected FAS ZIP Code™ through the use of footnoted mailing restrictions codes (see the [Restrictions](#) following the table). For more information on available extra services for FAS destinations, see *Mailing Standards of the United States Postal Service, Domestic Mail Manual (DMM®)*, part 503.

Acceptance clerks must use the table with the Retail System Software terminal to determine which FAS ZIP Codes are active and which conditions of mailing apply.

FAS Restrictions Table

FAS Table	See Restrictions
96939	A, B
96940	A, B
96941	A, B
96942	A, B
96943	A, B
96944	A, B
96960	A, B
96970	A, B, D
Marshall Islands	C
Federated States of Micronesia	C

RESTRICTIONS LEGEND

PS Form 2976, *Customs Declaration CN 22 – Sender's Declaration*

PS Form 2976-A, *Customs Declaration and Dispatch Note*

FAS = Freely Associated State

- A.** Bank currency (coin and paper) is prohibited.
- B.** Signature Confirmation, Signature Confirmation Restricted Delivery, Adult Signature Requested, Adult Signature Restricted Delivery, Certified Mail Adult Signature Required, and Certified Mail Adult Signature Restricted Delivery not available.
- C.** Collect on Delivery is prohibited.
- D.** Betel nut (Areca catechu) is prohibited.

— *Asia-Pacific Relations,
Global Business, 12-29-22*

Reminder: International Reply Coupons (Return Dates: January 1 – 31, 2023)

Retail Unit Instructions

All Postal Retail Units (PRUs) must submit foreign-issued (exchanged) International Reply Coupons (IRCs) accepted through December 31, 2022, to the Kansas City Stamp Fulfillment Service (SFS) center.

Foreign-issued IRCs (shown here) with expiration dates of December 31, 2025, are the only versions of IRCs that SFS will accept.

SFS will accept exchanged IRCs beginning January 1, 2023. The due date for submission by PRUs is January 31, 2023.

Expires December 2025



Redemption rates for all foreign-issued (exchanged) IRCs with an expiration date of December 31, 2025, are based on the **round date stamp** (on the right-hand side of the coupon), and are acceptable for return to SFS.

Date	Redemption Rate
01/01/2022–07/09/2022	1.30
07/10/2022–12/31/2022	1.40

Expiration dates are printed on the back of the IRCs. Do **NOT** send in IRCs with an expiration date of December 31, 2021, or earlier to SFS for any reason. Follow the procedures below:

- IRCs with an expiration date on or before December 31, 2021, that have not been returned (as advised in past *Postal Bulletin* articles), must be removed from the unit inventory, destroyed locally (no value), and posted as a shortage (AIC 767) to the unit reserve stock inventory. Retail System Software units must enter a count in the “Count Inventory and Cash” workflow; select “Close Credit/Transfer to Another Employee.” Single Drawer Accountability (SDA) sites will use AIC 622 to post the shortage.
- Unit reserve custodians may submit a claim for loss to the district finance manager by following the procedures in Handbook F-101, *Field Accounting Procedures*, subchapter 8-7, “Claim for Loss.” Upon

receipt of an approved claim for loss, clear the stamp credit shortage AIC 367 (SDA sites will use AIC 222) and offset to AIC 633, Claim for Loss; use Reason Code 10, Uncollectible Employee Items.

Submission Instructions

- Bind foreign-issued (exchanged) IRCs in bundles of 100 or less.
- Prepare PS Form 17, *Stamp Requisition/Stamp Return* (May 2007), in triplicate and annotate “IRC Return.”
- Include a shipment number on PS Form 17 or the shipment will be returned to the originating unit. Include the destruction SFS finance number (receiving unit location ID).
- Submit the original and copy 1 of PS Form 17 with the stock. File copy 2 locally with all supporting documentation.
- Use only one PS Form 17 for all your IRCs. You do not need to attach PS Form 17 on the outside of the return. The office must write “IRC” on the outside of the return package.
- Ship Priority Signature confirmation to:
 Kansas City SFS (289995-0000)
 KANSAS CITY SFS
 STAMP FULFILLMENT SERVICES
 IRC RETURN
 8300 NE UNDERGROUND DRIVE, PILLAR 225
 KANSAS CITY, MO 64162-9998

The Stamp Distribution Offices (SDOs) listed here will **NOT** accept redeemed or exchanged IRCs:

- San Juan SDO (428460-0000)
Caribbean
- Honolulu SDO (142400-0000)
Honolulu

Note: SFS will not accept *Migratory Bird* stamps or any other stock at this time; you must submit these items only during your regular destruction schedule. You must send IRCs in separately.

Stamp Fulfillment Services Instructions

SFS will be responsible for the consolidation and batching of IRCs from the PRUs. SFS will send an email notice of the IRCs to be exchanged to the St. Louis Accounting Service Center (ASC) International Accounting Branch (IAB) by February 28 of each calendar year.

SFS will send the IRC notice to the International Accounting Management team at the following email address: IAMgmt@usps.gov. The notice will provide the quantity of IRCs to be exchanged and the number of boxes

to be returned to the Universal Postal Union (UPU) International Bureau. SFS will be responsible for the shipment of exchanged IRCs to the UPU International Bureau.

Once SFS receives the completed IRC cover letter, CN 03 form, and the shipping information packing list from the St. Louis ASC IAB, SFS will prepare the IRCs for shipment.

SFS will ship the IRCs via Priority Mail Express International[®] with the Customs Declaration, PS Form 2976-B, *Priority Mail Express International Shipping*, and PS Form 2865, *Return Receipt for International Mail*.

SFS will return the IRCs in accordance with the *Letter Post Manual*, International Reply Coupons (currently Article RL 146 of the 2014–2017 *Letter Post Manual*).

SFS will ship the IRCs to the following address (addressee's information):

UPU INTERNATIONAL BUREAU
INTERNATIONAL REPLY COUPONS
PO BOX 312
CH 3000 BERNE 15
SWITZERLAND

SFS will include the Cover Letter, CN 03 in duplicate, and the shipping information packing list in the box labeled as Box 1 of X.

The return address for this shipment will be the following (sender's information):

INTERNATIONAL ACCOUNTING BRANCH
UNITED STATES POSTAL SERVICE
PO BOX 80408
SAINT LOUIS, MO 63180-0408
USA

SFS must use their USPS Corporate Account Number as the method of payment.

St. Louis ASC IAB Instructions

The St. Louis ASC IAB will send an email to SFS at SFS_OPERATIONS@usps.gov that includes the following forms:

1. The IRC cover letter, signed by the manager, International Accounting Branch.

2. A completed CN 03 form (with the quantity of IRCs to be returned), signed by the manager, International Accounting Branch. Reply coupon values are provided in the *Letter Post Manual*, International Reply Coupons (currently Article RL 146 of the 2014–2017 *Letter Post Manual*).
3. A completed shipping information packing list that provides the IRC quantity and the number of boxes to be returned.

When the St. Louis ASC IAB receives the returned CN 03 form from the UPU International Bureau, the document is then given to the settlement group leader. The settlement group leader will check that the payment was reported as received as international funds from Switzerland on the Cash Position Report from Corporate Treasury. Once the funds have been identified, the St. Louis ASC IAB will create a manual invoice.

After the St. Louis ASC IAB creates the manual invoice (in accordance with IAB procedures), the settlement group leader will clear the receipt.

For more information, see Handbook F-101, *Field Accounting Procedures*, which is available on the Postal Service[™] PolicyNet website:

- Go to blue.usps.gov.
- In the left-hand column, click *Essential Links*, and then click *PolicyNet*.
- Go to the right-hand side under “Published Forms and Directives.”
- Click *Handbooks*.

The direct URL for Handbook F-101 is blue.usps.gov/cpim/ftp/hand/f101.pdf.

— Revenue and Field Accounting,
Controller, 12-29-22

Information Security

Become a CyberSafe Guardian

The Postal Service[™] is seeking employees interested in joining the CyberSafe Guardian program, which helps protect the organization's computer network.

CyberSafe Guardian volunteers work closely with the Corporate Information Security Office to raise awareness of online security issues and provide feedback from the field while promoting the organization's CyberSafe at USPS[®] initiatives at postal facilities.

The program is open to Executive and Administrative Schedule (EAS) employees. To join, EAS employees must fill out and submit the registration form at blue.usps.gov/cyber/guardian/welcome.htm.

For more information about joining the CyberSafe Guardian program, send an email to the Cybersecurity Awareness Team at CyberSafeComms@usps.gov.

— Corporate Information Security Office,
Chief Information Security Officer, 12-29-22

International Mail

Price Changes and Minor Classification Changes for International Mailing Services

Effective January 22, 2023, the Postal Service™ will revise Notice 123, *Price List*, to reflect changes to prices and fees for the International Mailing services noted in this article. In addition, the Postal Service will update country names throughout *Mailing Standards of the United States Postal Service*, International Mail Manual (IMM®) by changing “Turkey” to “Turkiye,” which is the official short name for the Republic of Turkiye.

The following information is based on Postal Regulatory Commission (PRC) Order No. 6341 issued on November 28, 2022, in Docket No. R2023-1. In that order, the PRC found that the price adjustments included in the Postal Service’s notice may go into effect on January 22, 2023. The Postal Service will revise Notice 123 to reflect the new prices and fees. The order is available on the PRC website at prc.gov.

On January 22, 2023, the Postal Service will increase prices for the following market-dominant international services:

- **First-Class Mail International® (FCMI):** The price for a single-piece postcard will be \$1.45 worldwide. The price for the FCMI letter nonmachinable surcharge will increase to \$0.40. The FCMI single-piece letter and flat prices will be as follows:

Letters				
Weight Not Over (oz.)	Price Groups			
	1	2	3–5	6–9
1	\$1.45	\$1.45	\$1.45	\$1.45
2	1.45	2.19	2.71	2.51
3	2.05	2.90	3.96	3.57
3.5	2.65	3.63	5.22	4.62

Flats				
Weight Not Over (oz.)	Price Groups			
	1	2	3–5	6–9
1	\$2.90	\$2.90	\$2.90	\$2.90
2	3.15	3.74	4.06	4.00
3	3.42	4.58	5.23	5.11
4	3.66	5.44	6.43	6.22
5	3.93	6.29	7.60	7.33
6	4.19	7.13	8.78	8.46
7	4.46	8.00	9.96	9.56
8	4.72	8.84	11.13	10.67
12	6.03	10.67	13.50	12.98
15.994	7.33	12.51	15.86	15.27

- **International Extra Services and Fees:** The Postal Service will increase prices for certain market dominant International Extra Services as noted:
- **Certificate of Mailing service:** Fees for Certificate of Mailing service for FCMI will increase as follows:

Certificate of Mailing	
Individual pieces	Fee
Individual article (PS Form 3817) First-Class Mail International only	\$1.85
Duplicate copy of PS Form 3817 or PS Form 3665 (per page) First-Class Mail International only	1.85
Firm mailing sheet (PS Form 3665), per piece (minimum 3) First-Class Mail International only	0.54
Bulk quantities	
For first 1,000 pieces (or fraction thereof) First-Class Mail International only	\$10.40
Each additional 1,000 pieces (or fraction thereof) First-Class Mail International only	1.35
Duplicate copy of PS Form 3606 First-Class Mail International only	1.85

- **Registered Mail® service:** The price for international Registered Mail service for FCMI will increase to \$19.05.
- **Return Receipt service:** The price for international Return Receipt service for FCMI will increase to \$5.30.
- **Customs Clearance and Delivery Fee:** The Customs Clearance and Delivery Fee per dutiable item for Inbound Letter Post letters and flats will increase to \$7.85.
- **International Business Reply™ service (IBRS):** The price for IBRS cards will increase to \$2.00, and the price for IBRS envelopes (up to 2 ounces) will increase to \$2.50.

The Postal Service will incorporate these revisions into the January 22, 2023, edition of Notice 123 and into the January 22, 2023, edition of the IMM. Both documents are available via Postal Explorer® at pe.usps.com.

– Product Classification, Product Solutions, 12-29-22

Stamp Services

Stamp Announcement 23-7: Florida Everglades Stamp



©2022 USPS

On January 22, 2023, in Homestead, FL, the United States Postal Service® will issue the \$9.65 *Florida Everglades* Priority Mail® stamp, in one design, in a pressure-sensitive adhesive (PSA) pane of four stamps (Item 122300). This stamp will go on sale nationwide January 22, 2023, and must not be sold or canceled before the first-day-of-issue.

This Priority Mail stamp celebrates the Florida Everglades, one of the largest wetlands in the world and the most significant breeding ground for tropical wading birds in North America. The stamp art shows a sawgrass marsh as seen at sunset from the edge of a cypress dome. In the foreground, a stand of mature bald cypress trees shelters a great egret in flight while a great blue heron patiently awaits its prey. In the background, the marsh meanders toward the horizon, dotted with tree islands, as roseate spoonbills and other waterbirds fly overhead. Designed by art director Greg Breeding, the stamp showcases a digital illustration by Dan Cosgrove.

Availability to Post Offices: Item 122300, \$9.65 Florida Everglades Priority Mail Pane of 4 Stamps

Stamp Fulfillment Services will not make an automatic push distribution to Post Offices. Post Offices may begin ordering stamps before the first-day-of-issue through SFS Web at sfsweb.usps.gov/sfsweb.

How to Order the First-Day-of-Issue Postmark

Customers have 120 days to obtain the first-day-of-issue postmark by mail. They may purchase new stamps at their local Post Office™ or at The Postal Store® website at store.usps.com/store/home. They must affix the stamps to envelopes of their choice, address the envelopes (to

themselves or others), and place them in a larger envelope addressed to:

FDOI – Florida Everglades Stamp
USPS Stamp Fulfillment Services
8300 NE Underground Drive, Suite 300
Kansas City, MO 64144-9900

After applying the first-day-of-issue postmark, the Postal Service will return the envelopes through the mail. There is no charge for the postmark up to a quantity of 50. There is a 5-cent charge for each additional postmark over 50. All orders must be postmarked by May 22, 2023.

How to Order First-Day Covers

The Postal Service also offers first-day covers for new stamp issues and Postal Service stationery items postmarked with the official first-day-of-issue cancellation. Each item has an individual catalog number and is offered in the *USA Philatelic* catalog and online at store.usps.com/store/home. Customers may register to receive a free *USA Philatelic* catalog online at usps.com/philatelic.

Locally produced items are not authorized. Only merchandise that has been approved and assigned an item number by Headquarters Retail Marketing may be produced and sold.

Issue:	<i>Florida Everglades</i> Stamp
Item Number:	122300
Denomination & Type of Issue:	\$9.65 Priority Mail Rate
Format:	Pane of 4 (1 design)
Series:	N/A
Issue Date & City:	January 22, 2023, Homestead, FL 33030
Art Director:	Greg Breeding, Charlottesville, VA
Designer:	Greg Breeding, Charlottesville, VA
Artist:	Dan Cosgrove, Chicago, IL
Modeler:	Sandra Lane / Michelle Finn
Manufacturing Process:	Offset, Microprint
Printer:	Banknote Corporation of America
Press Type:	Gallus RCS
Stamps per Pane:	4
Print Quantity:	2,800,000 stamps
Paper Type:	Phosphor, Block Tag
Adhesive Type:	Pressure-sensitive
Colors:	Cyan, Magenta, Yellow, Black
Stamp Orientation:	Horizontal
Image Area (w x h):	1.42 x 1.085 in / 36.068 x 27.559 mm
Overall Size (w x h):	1.56 x 1.225 in / 39.624 x 31.115 mm
Full Pane Size (w x h):	4.12 x 3.45 in / 104.648 x 87.63 mm
Plate Size:	60 stamps per revolution
Plate Number:	"B" followed by four (4) single digits
Marginal Markings:	
Front:	Plate number in two corners of pane
Back:	©2022 USPS • USPS logo • Four barcodes (122300) • Plate position diagram (15) • Promotional text

Stamp Announcement 23-8: Great Smoky Mountains Stamp



©2022 USPS

On January 22, 2023, in Gatlinburg, TN, the United States Postal Service® will issue the \$28.75 *Great Smoky Mountains* Priority Mail Express® stamp, in one design, in a pressure-sensitive adhesive (PSA) pane of four stamps (Item 129200). This stamp will go on sale nationwide January 22, 2023, and must not be sold or canceled before the first-day-of-issue.

The new Priority Mail Express stamp celebrates the beauty of the Great Smoky Mountains. The Smokies are home to extensive national lands and a vast array of native plants and animals. The stamp art captures an iconic mountain scene located near Newfound Gap between Gatlinburg, TN, and Cherokee, NC. In the foreground, a red-tailed hawk flies over the landscape. Art director Greg Breeding designed the stamp with original art by Dan Cosgrove.

Availability to Post Offices: Item 129200, \$28.75 Great Smoky Mountains Priority Mail Express Pane of 4 Stamps

Stamp Fulfillment Services will not make an automatic push distribution to Post Offices. Post Offices may begin ordering stamps before the first-day-of-issue through SFS Web at sfsweb.usps.gov/sfsweb.

How to Order the First-Day of Issue Postmark

Customers have 120 days to obtain the first-day-of-issue postmark by mail. They may purchase new stamps at their local Post Office™ or at The Postal Store® website at store.usps.com/store/home. They must affix the stamps to envelopes of their choice, address the envelopes (to themselves or others), and place them in a larger envelope addressed to:

FDOI – Great Smoky Mountains Stamp
 USPS Stamp Fulfillment Services
 8300 NE Underground Drive, Suite 300
 Kansas City, MO 64144-9900

After applying the first-day-of-issue postmark, the Postal Service will return the envelopes through the mail. There is no charge for the postmark up to a quantity of 50. There is a 5-cent charge for each additional postmark over 50. All orders must be postmarked by May 22, 2023.

How to Order First-Day Covers

The Postal Service also offers first-day covers for new stamp issues and Postal Service stationery items postmarked with the official first-day-of-issue cancellation. Each item has an individual catalog number and is offered in the *USA Philatelic* catalog and online at store.usps.com/store/home. Customers may register to receive a free *USA Philatelic* catalog online at usps.com/philatelic.

Locally produced items are not authorized. Only merchandise that has been approved and assigned an item number by Headquarters Retail Marketing may be produced and sold.

Issue:	<i>Great Smoky Mountains</i> Stamp
Item Number:	129200
Denomination & Type of Issue:	\$28.75 Priority Mail Express Rate
Format:	Pane of 4 (1 design)
Series:	N/A
Issue Date & City:	January 22, 2023, Gatlinburg, TN 37738
Art Director:	Greg Breeding, Charlottesville, VA
Designer:	Greg Breeding, Charlottesville, VA
Artist:	Dan Cosgrove, Chicago, IL
Modeler:	Sandra Lane / Michelle Finn
Manufacturing Process:	Offset, Microprint
Printer:	Banknote Corporation of America
Press Type:	Gallus RCS
Stamps per Pane:	4
Print Quantity:	800,000 stamps
Paper Type:	Phosphor, Block Tag
Adhesive Type:	Pressure-sensitive
Colors:	Cyan, Magenta, Yellow, Black
Stamp Orientation:	Horizontal
Image Area (w x h):	1.42 x 1.085 in / 36.068 x 27.559 mm
Overall Size (w x h):	1.56 x 1.225 in / 39.624 x 31.115 mm
Full Pane Size (w x h):	4.12 x 3.45 in / 104.648 x 87.63 mm
Plate Size:	60 stamps per revolution
Plate Number:	"B" followed by four (4) single digits
Marginal Markings:	
Front:	Plate number in two corners of pane
Back:	©2022 USPS • USPS logo • Four barcodes (129200) • Plate position diagram (15) • Promotional text

— Stamp Services,
 Marketing, 12-29-22

Correction: Pictorial Postmarks Announcement

In the article titled, “Pictorial Postmarks Announcement” in *Postal Bulletin* 22612 (12-1-22, page 33), the pictorial postmark shown for Departamento de Transportacion y Obras Publicas Station has been canceled.



November 17, 2022

The Puerto Rico Department of Transportation and Public Works

Departamento de
Transportacion y Obras
Publicas Station

Customer Relations Specialist
585 Avenue Franklin D.
Roosevelt, Suite 223
San Juan, PR 00936-9998

– *Stamp Services,
Marketing, 12-29-22*

Update: Stamp Announcement 23-2: School Bus Stamp

In the article titled “Stamp Announcement 23-2: School Bus Stamp,” in *Postal Bulletin* 22612 (12-1-22, page 29), the Overall Size (w x h) in the technical details table was listed incorrectly for the pane of 20.

The corrected technical details for the *School Bus* stamp pane of 20 are shown here:

Overall Size (w x h):	1.19 x 0.91 in / 30.226 x 23.114 mm
-----------------------	-------------------------------------

– *Stamp Services,
Marketing, 12-29-22*

Update: Stamp Announcement 23-6: Ernest J. Gaines Stamp

In the article titled “Stamp Announcement 23-6: Ernest J. Gaines Stamp,” in *Postal Bulletin* 22613 (12-15-22, page 39–40), the Colors in the technical details table were listed incorrectly.

The corrected technical details for the *Ernest J. Gaines* stamp are shown here:

Colors:	Cyan, Magenta, Yellow, Black
---------	------------------------------

– *Stamp Services,
Marketing, 12-29-22*

How to Order the First-Day-of-Issue Digital Color or Traditional Postmarks

Customers have 120 days to obtain the first-day-of-issue postmarks by mail. Each cover must have sufficient postage to meet First-Class Mail® requirements. Customers may purchase new stamps at their local Post Office™, by phone at 844-737-7826, or on The Postal Store® website at usps.com/shop.

Digital Color Postmarks

Only select stamp issues offer a digital color postmark. Customers may submit #6 or #10 envelopes constructed of paper rated as “laser safe.” The Postal Service™ recommends envelopes of 80-pound Accent Opaque, acid-free, 9/16-inch side seams with no glue on the flap. The maximum size of all digital color postmarks is 2 inches (vertically) by 4 inches (horizontally). Allow sufficient space on the envelope to accommodate the postmark. Do not use self-adhesive labels for addresses on the envelope. Two test envelopes must be included. There is a minimum of 10 envelopes at 50 cents per postmark required at the time of servicing. Customers must submit a check, money order, or credit card for payment.

The Postal Service reserves the right to not accept hand-painted and other cachet envelopes that are not compatible with our digital color postmark equipment. The Postal Service also reserves the right to substitute traditional black rubber postmarks if use of nonspecified envelopes results in poor image quality or damage to equipment.

Customers must affix the stamps to the envelopes and address them to themselves or others for return through the mail. Or, they may include an additional self-addressed return envelope, large enough to accommodate their canceled items, with sufficient postage affixed for return of

their postmarked items. Address customer requests for digital color postmarks to:

FDOI – (Name of Stamp Issue)
 USPS Stamp Fulfillment Services
 8300 NE Underground Drive, Suite 300
 Kansas City, MO 64144-9900

After applying the first-day-of-issue postmark, the Postal Service will return the envelopes to the customer by U.S. Mail®.

Traditional Postmarks

Customers must affix the stamps to the envelopes and address them to themselves or others for return through the mail. Or, they may include an additional self-addressed return envelope, large enough to accommodate their canceled items, with sufficient postage affixed for return of their postmarked items. Address customer requests for traditional postmarks to:

FDOI – (Name of Stamp Issue)
 USPS Stamp Fulfillment Services
 8300 NE Underground Drive, Suite 300
 Kansas City, MO 64144-9900

After applying the first-day-of-issue postmark, the Postal Service will return the envelopes to the customer by U.S. Mail. There is no charge for the first 50 postmarks. There is a 5-cent charge for each additional postmark over 50. Customers must submit a check, money order, or credit card for payment.

Locally produced items are not authorized. Only merchandise that has been approved and assigned an item number by Headquarters Retail Marketing may be produced and sold.



Digital Color Pictorial

FDOI – James Webb Space Telescope Stamp

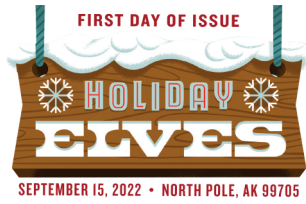
USPS Stamp Fulfillment Services January 8, 2023
 8300 NE Underground Drive, Suite 300
 Kansas City, MO 64144-9900



Black and White Pictorial

FDOI – James Webb Space Telescope Stamp

USPS Stamp Fulfillment Services January 8, 2023
 8300 NE Underground Drive, Suite 300
 Kansas City, MO 64144-9900



Digital Color Pictorial

FDOI – Holiday Elves Stamps

USPS Stamp Fulfillment Services
8300 NE Underground Drive, Suite 300
Kansas City, MO 64144-9900

January 15, 2023



Black and White Pictorial

FDOI – Holiday Elves Stamps

USPS Stamp Fulfillment Services
8300 NE Underground Drive, Suite 300
Kansas City, MO 64144-9900

January 15, 2023



Digital Color Pictorial

FDOI – Virgin and Child Stamp

USPS Stamp Fulfillment Services
8300 NE Underground Drive, Suite 300
Kansas City, MO 64144-9900

January 22, 2023



Black and White Pictorial

FDOI – Virgin and Child Stamp

USPS Stamp Fulfillment Services
8300 NE Underground Drive, Suite 300
Kansas City, MO 64144-9900

January 22, 2023

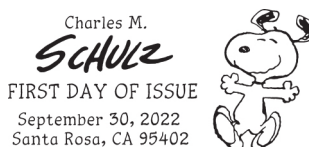


Digital Color Pictorial

FDOI – Charles M. Schulz Stamps

USPS Stamp Fulfillment Services
8300 NE Underground Drive, Suite 300
Kansas City, MO 64144-9900

January 30, 2023



Black and White Pictorial

FDOI – Charles M. Schulz Stamps

USPS Stamp Fulfillment Services
8300 NE Underground Drive, Suite 300
Kansas City, MO 64144-9900

January 30, 2023



Digital Color Pictorial

FDOI – Snowy Beauty Stamps

USPS Stamp Fulfillment Services
8300 NE Underground Drive, Suite 300
Kansas City, MO 64144-9900

February 11, 2023



FIRST DAY OF ISSUE

FDI – Snowy Beauty Stamps
USPS Stamp Fulfillment Services
8300 NE Underground Drive, Suite 300
Kansas City, MO 64144-9900

February 11, 2023

Black and White Pictorial



FDI – Kwanzaa 2022 Stamp
USPS Stamp Fulfillment Services
8300 NE Underground Drive, Suite 300
Kansas City, MO 64144-9900

February 13, 2023

Digital Color Pictorial



FDI – Kwanzaa 2022 Stamp
USPS Stamp Fulfillment Services
8300 NE Underground Drive, Suite 300
Kansas City, MO 64144-9900

February 13, 2023

Black and White Pictorial



FDI – Women Cryptologists of World War II Stamp
USPS Stamp Fulfillment Services
8300 NE Underground Drive, Suite 300
Kansas City, MO 64144-9900

February 18, 2023

Digital Color Pictorial



FDI – Women Cryptologists of World War II Stamp
USPS Stamp Fulfillment Services
8300 NE Underground Drive, Suite 300
Kansas City, MO 64144-9900

February 18, 2023

Black and White Pictorial



FDI – Hanukkah 2022 Stamp
USPS Stamp Fulfillment Services
8300 NE Underground Drive, Suite 300
Kansas City, MO 64144-9900

February 20, 2023

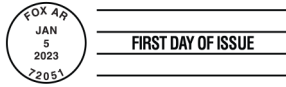
Digital Color Pictorial



FDI – Hanukkah 2022 Stamp
USPS Stamp Fulfillment Services
8300 NE Underground Drive, Suite 300
Kansas City, MO 64144-9900

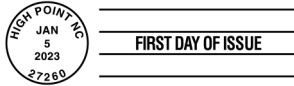
February 20, 2023

Black and White Pictorial

**FDI – Red Fox Stamp**

USPS Stamp Fulfillment Services
8300 NE Underground Drive, Suite 300
Kansas City, MO 64144-9900

May 5, 2023

Black and White Pictorial**FDI – School Bus Stamp**

USPS Stamp Fulfillment Services
8300 NE Underground Drive, Suite 300
Kansas City, MO 64144-9900

May 5, 2023

Black and White Pictorial**FDI – Lunar New Year: Year of the Rabbit Stamp**

USPS Stamp Fulfillment Services
8300 NE Underground Drive, Suite 300
Kansas City, MO 64144-9900

May 12, 2023

Digital Color Pictorial**FDI – Lunar New Year: Year of the Rabbit Stamp**

USPS Stamp Fulfillment Services
8300 NE Underground Drive, Suite 300
Kansas City, MO 64144-9900

May 12, 2023

Black and White Pictorial**FDI – Love 2023 Stamps**

USPS Stamp Fulfillment Services
8300 NE Underground Drive, Suite 300
Kansas City, MO 64144-9900

May 19, 2023

Digital Color Pictorial**FDI – Love 2023 Stamps**

USPS Stamp Fulfillment Services
8300 NE Underground Drive, Suite 300
Kansas City, MO 64144-9900

May 19, 2023

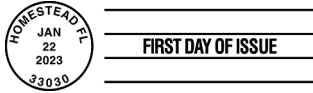
Black and White Pictorial



FDI – Florida Everglades Stamp
 USPS Stamp Fulfillment Services
 8300 NE Underground Drive, Suite 300
 Kansas City, MO 64144-9900

May 22, 2023

Digital Color Pictorial



FDI – Florida Everglades Stamp
 USPS Stamp Fulfillment Services
 8300 NE Underground Drive, Suite 300
 Kansas City, MO 64144-9900

May 22, 2023

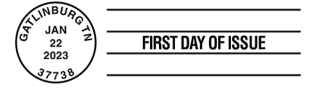
Black and White Pictorial



FDI – Great Smoky Mountains Stamp
 USPS Stamp Fulfillment Services
 8300 NE Underground Drive, Suite 300
 Kansas City, MO 64144-9900

May 22, 2023

Digital Color Pictorial



FDI – Great Smoky Mountains Stamp
 USPS Stamp Fulfillment Services
 8300 NE Underground Drive, Suite 300
 Kansas City, MO 64144-9900

May 22, 2023

Black and White Pictorial



FDI – Ernest J. Gaines Stamp
 USPS Stamp Fulfillment Services
 8300 NE Underground Drive, Suite 300
 Kansas City, MO 64144-9900

May 23, 2023

Digital Color Pictorial



FDI – Ernest J. Gaines Stamp
 USPS Stamp Fulfillment Services
 8300 NE Underground Drive, Suite 300
 Kansas City, MO 64144-9900

May 23, 2023

Black and White Pictorial

475 L'ENFANT PLAZA SW
WASHINGTON DC 20260-5540

First-Class Mail
Postage & Fees Paid
USPS
Permit No. G-10

Send Warmth and Cheer in Winter with ***Snowy Beauty*** Forever® Stamps



ON SALE NATIONWIDE: OCTOBER 11, 2022

