

Postal Bulletin

Published Since March 4, 1880

December 15, 2022

PB 22613



Through Rain, Sleet, and Snow, We Deliver Safely for America

See page 3



Contents

COVER STORY

Through Rain, Sleet, or Snow, We Deliver Safely for America	3
---	---

POLICIES, PROCEDURES, AND FORMS UPDATES

Manuals

DMM Revision: Forms of Identification	6
DMM Revision: Products Mailable at Nonprofit USPS Marketing Mail Prices	7

ORGANIZATION INFORMATION

Domestic Mail

Labeling List Changes	9
---------------------------------	---

Environmental Management

Environmental Compliance Reminder: De-icing Materials Storage	11
---	----

Finance

2023 Pay Dates and Leave Year	12
Wage Overpayment Indebtedness — Tax Treatment	13

Mailing and Shipping Services

Priority Mail Express Holiday Refund Eligibility	13
Priority Mail Regional Rate Boxes A and B will be Discontinued	14

Stamp Services

Stamp Announcement 23-4: Love 2023 Stamps	35
Stamp Announcement 23-5: Sailboats Stamps	37
Stamp Announcement 23-6: Ernest J. Gaines Stamp	39
Pictorial Postmarks Announcement	41
How to Order the First-Day-of-Issue Digital Color or Traditional Postmarks	43

PULL-OUT INFORMATION

Fraud

Invalid USPS Corporate Account Numbers	15
Missing, Lost, or Stolen U.S. Money Order Forms	17
Missing, Lost, or Stolen Canadian Money Order Forms	23
Verifying U.S. Postal Service Money Orders	25
Counterfeit Canadian Money Order Forms	25
Toll-Free Number Available to Verify Canadian Money Orders	25

Other Information

Overseas Military/Diplomatic Mail	26
Thrift Savings Plan Fact Sheet	32
Freely Associated States Restrictions	34

POSTAL BULLETIN 2022 SEMI-ANNUAL INDEX

2022 Semi-Annual Index	PB 22604 (8-11-22)
----------------------------------	--------------------

Find the latest in mail and delivery information and services offered by U.S. Postal® in the *Postal Bulletin* at about.usps.com/postal-bulletin

Mail Moment®

Cover Story

Through Rain, Sleet, or Snow, We Deliver Safely for America

Hazards associated with winter weather include exposure to cold temperatures and wet, icy, or snow-covered sidewalks and streets. Adverse weather conditions in winter lead to more vehicle collisions — according to reports from the National Highway Traffic Safety Administration, the months of November, December, and January consistently show at least 25 percent more traffic fatalities than the other months of the year. For those working outdoors, injuries from winter weather conditions include slip-and-fall accidents and stress from exposure to cold temperatures and difficult conditions. During winter, the secret to preventing injuries and staying safe is preparation for and awareness of potential dangers.

Dress appropriately for cold weather by wearing three light layers:

- An inner layer for wicking moisture away from your body.
- A middle layer to insulate you from the cold.
- An outer layer that repels wind, snow, and rain that you can remove, as needed.

Also, protect your hands, neck, and face with appropriate clothing, and wear warm, waterproof shoes or boots. Prolonged exposure to cold temperatures can cause your body to lose heat, which puts you at risk for hypothermia or frostbite. Frostbite occurs when skin is exposed to extreme cold for long periods, and the skin and underlying tissue freeze. The fingers, toes, and feet are most affected, but other extremities such as the nose, ears, and cheeks can also develop frostbite.

At the first sign of frostbite, get out of the cold. Unless necessary, do not walk on frostbitten feet or toes. Do not rub the frostbitten area because it will cause more damage. Warm the affected area using body heat or by immersing it in warm water; avoid using a heating pad, heat lamp, or the heat of a stove, fireplace, or radiator for warming because direct heat can burn damaged tissue. Drink warm beverages to replace lost fluids. In case of severe frostbite, seek medical attention.

Snowy and icy conditions increase the likelihood of slips, trips, and falls, which result in pain, injury, and lost productivity. Proper footwear with good tread is essential to walk safely on slippery surfaces. Prevent slips, trips, and falls with the following tips:

- Wear grippers (ice cleats).
- Walk with care and take short steps.
- Finger mail only when it is safe to do so.

- Take extra precautions when entering and exiting your vehicle.
- Use handrails on steps.
- Wait for vehicles to stop completely on snow- or ice-covered roadways before crossing the street.

Wet and icy road surfaces, longer periods of darkness, and poor visibility from snow, rain, and fog create driving hazards during the winter months. Prepare for driving in bad weather with the following tips:

- Maintain your vehicle and tune up the engine for winter.
- Keep good treads on your tires.
- Make sure your lights function properly.
- Add anti-freeze and windshield wiper fluid, if necessary.
- Replace worn wipers.
- Clear ice and snow from windows, headlights, and the hood and roof of your car before starting out, and repeat as needed.

Keep an emergency kit in your car with the following supplies:

- Cat litter or sand.
- An ice scraper or snow brush.
- A small shovel.
- Extra clothes and blankets.
- Non-perishable food.

If you plan to travel in bad weather, monitor road and weather conditions by checking local news, traffic, and weather stations or websites. Winter driving can be challenging — practice safe driving techniques with these tips:

- Leave a few minutes early so you have plenty of time to reach your destination.
- Wear your seat belt.
- Avoid distractions while driving.
- Stay alert and calm. Keep an eye on traffic farther ahead so you have extra time to react to sudden changes in traffic flow.
- Maintain a safe speed for road conditions. Keep a safe distance between you and other vehicles.
- Do not use cruise control. Touching your brakes to deactivate it can cause you to skid.
- Avoid making abrupt lane changes. Use turn signals well before you turn.

- Make room for maintenance vehicles and snowplows.
- Watch for black ice on slippery overpasses and bridges.
- Do not use alcohol or drugs while driving.

If you get stuck in the snow or skid off the road, stay in your car and wait for help, but first make sure your car is safely out of harm's way. Turn on the car heater to stay warm, but make sure your exhaust pipe is clear of snow.

Winter safety throughout the season also includes the following tasks:

- Winterize your home by replacing the weatherstripping on windows and doors, and cleaning leaves out of gutters.
- Service your home's heating system so that it works properly.
- Install carbon monoxide detectors to pick up on any CO that makes its way into your home through your garage or your heating system.

- Get chimneys inspected.
- Stock up on food, water, batteries, and other supplies in case you ever lose power during a bad storm and can't get out.

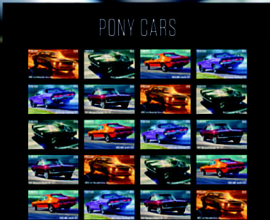
For more winter safety tips, see the following resources:

- Safety Depends on Me videos at blue.usps.gov/corpcomm/uspstv/safety-and-health.
- HERO Safety Talks.
- Center for Disease Control and Prevention (CDC) at cdc.gov/disasters/winter/index.html.
- Occupational Safety and Health Administration (OSHA) at osha.gov/winter-weather.
- National Safety Council at nsc.org/home-safety/tools-resources/seasonal-safety/winter.
- National Weather Service at weather.gov/safety/winter.

Always remember: "Safety Depends on Me."

— Occupational Safety and Health,
Human Resources, 12-15-22

Enjoy the Thrill of Iconic **Pony Cars** Forever® Stamps



ON SALE NATIONWIDE: AUGUST 25, 2022
Sold as a full pane.

Policies, Procedures, and Forms Updates

Manuals

DMM Revision: Forms of Identification

Effective January 22, 2023, the Postal Service™ will revise *Mailing Standards of the United States Postal Service*, Domestic Mail Manual (DMM®), sections 608.10.3 and 608.10.4, to reflect changes in the types of identification that the Postal Service accepts as primary and secondary forms of identification.

The Postal Service is updating section 608.10.3, “Acceptable Primary Forms of Photo Identification,” to add territory- and tribal-issued driver’s licenses as acceptable primary forms of identification. The Postal Service is also clarifying the types of non-driver’s identification cards that are acceptable as primary forms of identification (state-, territory-, or tribal-issued). Additionally, revisions to the section reflect that the Postal Service has replaced the U.S. Armed Forces card with the U.S. Department of Defense Common Access card (CAC) and added the U.S. government-issued USAccess card and other Personal Identity Verification (PIV) cards as acceptable forms of primary identification.

The Postal Service is revising section 608.10.4, “Acceptable Secondary Forms of Identification,” to reflect that the Postal Service no longer accepts utility bills as an acceptable form of secondary identification. This new policy is based on concerns that utility bills cannot be accurately traced to the bearer. This change is also for consistency regarding acceptable forms of non-photo identification.

Although the Postal Service will not publish these revisions in the DMM until January 22, 2023, the standards are effective immediately.

Mailing Standards of the United States Postal Service, Domestic Mail Manual (DMM)

* * * * *

600 Basic Standards for All Mailing Services

* * * * *

608 Postal Information and Resources

* * * * *

10.0 Forms of Identification

10.3 Acceptable Primary Forms of Photo Identification

[Revise the second sentence of the introductory text of 10.3 to read as follows:]

***Postal Service customers may provide the following as acceptable primary forms of photo identification:

[Revise the introductory text of item a. and the text of 10.3a(1) through 10.3a(3) to read as follows:]

- a. *U.S. Government I.D.:* U.S. government I.D. may be federal-, state-, or tribal-issued. Customers may provide the following:

1. State-, territory-, or tribal-issued driver’s license.
2. State, territory, or tribal non-driver’s identification card.
3. U.S. Department of Defense Common Access card (CAC).

* * * * *

[Add new 10.3a(8) to read as follows:]

8. U.S. government-issued U.S. Access card, including a USAccess card or Personal Identity Verification (PIV) card.

* * * * *

10.4 Acceptable Secondary Forms of Identification

* * * * *

[Delete item d. and renumber current item e. as item d.]

* * * * *

The Postal Service will incorporate these revisions into the January 22, 2023, edition of the online DMM, which is available via Postal Explorer® at pe.usps.com.

DMM Revision: Products Mailable at Nonprofit USPS Marketing Mail Prices

Effective January 22, 2023, the Postal Service™ will revise *Mailing Standards of the United States Postal Service, Domestic Mail Manual (DMM®)*, section 703.1.6.11, to reflect a change in the price for low-cost items.

Under section 703.1.6.11, which is based on statutory restrictions, three types of products or items are mailable at Nonprofit USPS Marketing Mail® prices. A *low-cost item* (as defined in the Internal Revenue Code) is one of those products.

Each year, the Internal Revenue Service determines the maximum allowed value of a low-cost item adjusted for cost of living. For 2023, the allowed value of a low-cost item is \$12.50 or less. The value of a low-cost item is the item’s cost to the authorized nonprofit organization mailing the item or on whose behalf the item is mailed.

Although the Postal Service will not publish this revision in the DMM until January 22, 2023, the standard is effective January 1, 2023.

Mailing Standards of the United States Postal Service, Domestic Mail Manual (DMM)

* * * * *

700 Special Standards

703 Nonprofit USPS Marketing Mail and Other Unique Eligibility

1.0 Nonprofit USPS Marketing Mail

* * * * *

1.6 Eligible and Ineligible Matter

* * * * *

1.6.11 Products Mailable at Nonprofit USPS Marketing Mail Prices

* * * * *

[Revise item a. to read as follows:]

- a. Low-cost items within the meaning of 26 USC 513(h)(2), Internal Revenue Code. At the beginning of each calendar year, the value of low-cost items is adjusted for cost of living. Effective January 1, 2023, the cost of such items must not exceed \$12.50. This cost is the cost to the authorized organization that mails the items or on whose behalf the items are mailed.

* * * * *

The Postal Service will incorporate this revision into the January 22, 2023, edition of the online DMM, which is available via Postal Explorer® at pe.usps.com.

Celebrate Vibrant Music and Culture with *Mariachi* Forever® Stamps



ON SALE NATIONWIDE:
JULY 15, 2022
Sold as a full pane.

Organization Information

Domestic Mail

Labeling List Changes

Effective January 1, 2023, the Postal Service™ will revise Labeling List(s) L007, L009, L011, L012, L014, L201, and L606 to reflect changes in mail processing operations. Mailers are expected to label according to these revised lists for mailings inducted on or after the January 1, 2023, effective date through the February 28, 2023, expiration date.

Note: Due to the extensive number of changes to the following Labeling Lists, the changes will not be published in this *Postal Bulletin*:

- **L009 Mixed ADCs – Periodicals, Package Services Flats and Irregular Parcels, and Standard Mail Flats**
- **L011 Non-NDC/ASF Entry – Periodicals and Standard Mail Letters**
- **L201 Periodicals Origin Split and First-Class Mail Mixed ADC/AADC**

To access the L009, L011, and L201 Labeling List changes, as well as a complete listing of EELs changes in Postal Pro (effective January 1, 2023), visit postalpro.usps.com/operations/labeling-lists/changes-jan-1-2023.

Labeling Lists

* * * * *

L007 5-Digit Scheme – Periodicals, Standard Mail, and Package Services Flats in Bundles Changes

Column A Destination ZIP Codes	Column B Label Container To (Change From)	Column B Label Container To (Change To)
01844	GEORGETOWN MA 01833	METHUEN MA 01844
01864	WOBURN MA 01801	NORTH READING MA 01864
01876	DRACUT MA 01826	TEWKSBURY MA 01876
01879	MERRIMAC MA 01860	TYNGSBORO MA 01879
01880	READING MA 01867	WAKEFIELD MA 01880
01886	NORTH ANDOVER MA 01845	WESTFORD MA 01886
01890	WILMINGTON MA 01887	WINCHESTER MA 01890
01913	BEVERLY MA 01915	AMESBURY MA 01913
01923	NEWBURYPORT MA 01950	DANVERS MA 01923
01929	MERRIMAC MA 01860	ESSEX MA 01929
01938	GLOUCESTER MA 01930	IPSWICH MA 01938
01940	LAWRENCE MA 01840	LYNNFIELD MA 01940
01944	LYNN MA 01901	MANCHESTER MA 01944
01949	MERRIMAC MA 01860	MIDDLETON MA 01949
01966	GLOUCESTER MA 01930	ROCKPORT MA 01966
01969	MERRIMAC MA 01860	ROWLEY MA 01969
01982	PEABODY MA 01960	SOUTH HAMILTON MA 01982
01984	PEABODY MA 01960	WENHAM MA 01984
33012	HIALEAH FL 33010	HIALEAH FL 33012
33013	HIALEAH FL 33015	HIALEAH FL 33013
33014	HIALEAH FL 33015	HIALEAH FL 33014

Column A Destination ZIP Codes	Column B Label Container To (Change From)	Column B Label Container To (Change To)
33056	OPA LOCKA FL 33055	MIAMI GARDENS FL 33056
33064	POMPANO BEACH FL 33060	POMPANO BEACH FL 33064
33074	POMPANO BEACH FL 33060	POMPANO BEACH FL 33064
33144	MIAMI FL 33174	MIAMI FL 33144
33168	MIAMI FL 33169	MIAMI FL 33168
33172	MIAMI FL 33155	MIAMI FL 33172
33173	MIAMI FL 33161	MIAMI FL 33173
33222	MIAMI FL 33155	MIAMI FL 33172
60403	CREST HILL IL 60403	JOLIET IL 60435
60404	CREST HILL IL 60403	JOLIET IL 60435
60422	GLENWOOD IL 60425	FLOSSMOOR IL 60422
60425	GLENWOOD IL 60425	FLOSSMOOR IL 60422
60430	GLENWOOD IL 60425	FLOSSMOOR IL 60422
60431	CREST HILL IL 60403	JOLIET IL 60435
60434	CREST HILL IL 60403	JOLIET IL 60435
60435	CREST HILL IL 60403	JOLIET IL 60435
92606	IRVINE CA 92612	IRVINE CA 92614
92612	IRVINE CA 92612	IRVINE CA 92618
92617	IRVINE CA 92612	IRVINE CA 92618
92625	ALISO VIEJO CA 92656	CORONA DEL MAR CA 92625
92806	ANAHEIM CA 92801	ANAHEIM CA 92806
92816	ANAHEIM CA 92801	ANAHEIM CA 92806
92833	FULLERTON CA 92831	FULLERTON CA 92833
92834	FULLERTON CA 92835	FULLERTON CA 92831
92836	FULLERTON CA 92831	FULLERTON CA 92833
92837	FULLERTON CA 92831	FULLERTON CA 92833
94549	ALAMO CA 94507	LAFAYETTE CA 94549

Newly Added

Column A Destination ZIP Codes	Column B Label Container To (Added To)
51603	SHENANDOAH IA 51601
60401	BEECHER IL 60401
60402	BERWYN IL 60402
60406	BERWYN IL 60402
60409	CALUMET CITY IL 60409
60410	BEECHER IL 60401
60418	BERWYN IL 60402
60419	BEECHER IL 60401
60429	HAZEL CREST IL 60429
60438	BEECHER IL 60401
60445	BERWYN IL 60402
60447	BEECHER IL 60401
60449	BEECHER IL 60401
60452	HARVEY IL 60426
60466	HAZEL CREST IL 60429
60468	BEECHER IL 60401

Column A Destination ZIP Codes	Column B Label Container To (Added To)
60471	HAZEL CREST IL 60429
60473	CALUMET CITY IL 60409
60475	CALUMET CITY IL 60409
60480	FLOSSMOOR IL 60422
60482	CRETE IL 60417
60484	HAZEL CREST IL 60429
68002	BENNINGTON NE 68007
68056	BELLEVUE NE 68005
68621	ALBION NE 68620
68655	ALBION NE 68620
68659	ALBION NE 68620
92840	GARDEN GROVE CA 92845
92841	GARDEN GROVE CA 92845
92842	GARDEN GROVE CA 92845
92843	GARDEN GROVE CA 92845
92844	GARDEN GROVE CA 92845

* * * * *

L012 5-Digit ZIP Scheme Combination

* * * * *

Newly Added

Column A Destination ZIP Codes	Column B Label Container To (Added To)
51536	CARSON IA 51525
51601	SHENANDOAH IA 51601
51603	SHENANDOAH IA 51601
51630	SHENANDOAH IA 51601
51631	SHENANDOAH IA 51601
51632	SHENANDOAH IA 51601
51636	SHENANDOAH IA 51601
51637	SHENANDOAH IA 51601
51638	SHENANDOAH IA 51601
51639	SHENANDOAH IA 51601
51640	SHENANDOAH IA 51601
51645	SHENANDOAH IA 51601
51646	SHENANDOAH IA 51601
51647	SHENANDOAH IA 51601
51648	SHENANDOAH IA 51601
51649	SHENANDOAH IA 51601
51650	SHENANDOAH IA 51601
51651	SHENANDOAH IA 51601

Column A Destination ZIP Codes	Column B Label Container To (Added To)
51652	SHENANDOAH IA 51601
51653	SHENANDOAH IA 51601
51654	SHENANDOAH IA 51601
51656	SHENANDOAH IA 51601
68001	ASHLAND NE 68003
68037	PLATTSMOUTH NE 68048
68040	PLATTSMOUTH NE 68048
68042	ASHLAND NE 68003
68055	ASHLAND NE 68003
68062	ASHLAND NE 68003
68066	PLATTSMOUTH NE 68048
68072	ASHLAND NE 68003
68601	COLUMBUS NE 68601
68602	COLUMBUS NE 68601
68701	COLUMBUS NE 68601
68702	COLUMBUS NE 68601

* * * * *

L014 5-Digit ZIP Scheme Combinations for Hubs

* * * * *

Deleted

Column A Destination ZIP Codes	Column B Label Container To (Deleted From)	Column C HUB (Deleted From)
68017	CERESCO NE 68017	LINCOLN NE 685

* * * * *

L606 5-Digit Scheme – Standard Mail, First-Class Mail, and Package Services Parcels

Changes

Column A Destination ZIP Codes	Column B Label Container To (Change From)	Column B Label Container To (Change To)
21158	WESTMINSTER MD 21157	WESTMINSTER MD 21158
63032	FLORISSANT MO 63033	FLORISSANT MO 63032
64801	JOPLIN MO 64803	JOPLIN MO 64801
64803	JOPLIN MO 64803	JOPLIN MO 64804

Newly Added

Column A Destination ZIP Codes	Column B Label Container To (Added To)
17101	HARRISBURG PA 17110
17102	HARRISBURG PA 17110
17103	HARRISBURG PA 17110
17104	HARRISBURG PA 17111
17109	HARRISBURG PA 17112
17110	HARRISBURG PA 17110
17111	HARRISBURG PA 17111
17112	HARRISBURG PA 17112
17315	YORK PA 17401
17501	EPHRATA PA 17522
17517	DENVER PA 17517
17519	NEW HOLLAND PA 17557
17522	EPHRATA PA 17522
17527	GAP PA 17527
17535	GAP PA 17527
17557	NEW HOLLAND PA 17557
17560	QUARRYVILLE PA 17566
17566	QUARRYVILLE PA 17566
17569	DENVER PA 17517
17578	DENVER PA 17517
17602	LANCASTER PA 17601
21048	WESTMINSTER MD 21158
55118	SAINT PAUL MN 55121

Column A Destination ZIP Codes	Column B Label Container To (Added To)
55122	SAINT PAUL MN 55122
55123	SAINT PAUL MN 55122
60610	CHICAGO IL 60610
60654	CHICAGO IL 60610
61701	BLOOMINGTON IL 61701
61702	BLOOMINGTON IL 61701
61704	BLOOMINGTON IL 61701
61705	BLOOMINGTON IL 61705
61709	BLOOMINGTON IL 61701
61710	BLOOMINGTON IL 61701
61761	BLOOMINGTON IL 61705
63031	FLORISSANT MO 63032
63034	FLORISSANT MO 63033
64802	JOPLIN MO 64801
64804	JOPLIN MO 64804

Deleted

Column A Destination ZIP Codes	Column B Label Container To (Deleted From)
21157	WESTMINSTER MD 21157

— *Logistics, Network Development, and Support, Network Operations, 12-15-22*

Environmental Management

Environmental Compliance Reminder: De-icing Materials Storage

United States Postal Service® (USPS®) sites that store large quantities of de-icing/anti-skid products in areas prone to snow and sleet may be subject to regulation by federal law. State and local environmental laws may also impose mandatory chemical reporting, restrictions on quantities stored, or permitting and requirements for on-site storage areas.

De-icing/anti-skid products include:

- Sodium chloride (“rock salt”).
- Calcium chloride.
- Magnesium chloride.
- Calcium magnesium acetate.
- Sand.

De-icing and Anti-Skid Product Management

Proper storage of de-icing/anti-skid products ensures usability of product, eliminates potential loss of product, and reduces the possibility of environmental contamination with salt or chemical run-off.

Regardless of location, sites that order or store de-icing/anti-skid products must:

- Store de-icing/anti-skid products on non-porous concrete or asphalt. If possible, frame the storage area on three sides to form a bin. Do *not* store bulk

quantities directly on soil or near wells, reservoirs, or groundwater supplies.

- Cover de-icing/anti-skid product piles stored on-site (i.e., store materials under a shelter like an awning, shed, or tarp).
- Never purchase or store over 10,000 pounds at one site, unless necessary. Sites that store 10,000 pounds or more of de-icing/anti-skid products (including sand) are subject to USPS Tier II reporting (see blue.usps.gov/sustainability/environmental/tier-ii-reporting.htm).

Additional requirements may apply to your site, depending on your location. For more information, use the following guidance:

- Review the *De-icing and Anti-Skid Product Storage Environmental Compliance Bulletin* at blue.usps.gov/sustainability/environmental/_pdf/ecb-deicing-product-storage.pdf.
- Visit the Environmental Affairs website at blue.usps.gov/sustainability.
- Consult your designated environmental contact at blue.usps.gov/sustainability/contact.htm.

— *Environmental Affairs and Corporate Sustainability, Corporate Affairs, 12-15-22*

Finance

2023 Pay Dates and Leave Year

The following chart lists the 2023 pay periods. For the convenience of timekeepers, each biweekly pay period appears as two separate weeks with the beginning and ending dates indicated for each week.

The leave year always begins the first day of the first full pay period in the calendar year. The 2023 leave year begins January 14, 2023 (Pay Period 03-2023), extends for 26 full pay periods, and ends January 12, 2024 (Pay Period 02-2024).

2023 Pay Period Inclusive Dates

Pay Period	Week One	Week Two	Pay Date	Holidays
01	12-17 to 12-23	12-24 to 12-30	01-06	12-25
02	12-31 to 01-06	01-07 to 01-13	01-20	01-01
03	01-14 to 01-20	01-21 to 01-27	02-03	01-16
04	01-28 to 02-03	02-04 to 02-10	02-17	
05	02-11 to 02-17	02-18 to 02-24	03-03	02-20
06	02-25 to 03-03	03-04 to 03-10	03-17	
07	03-11 to 03-17	03-18 to 03-24	03-31	
08	03-25 to 03-31	04-01 to 04-07	04-14	
09	04-08 to 04-14	04-15 to 04-21	04-28	
10	04-22 to 04-28	04-29 to 05-05	05-12	
11	05-06 to 05-12	05-13 to 05-19	05-26	
12	05-20 to 05-26	05-27 to 06-02	06-09	05-29
13	06-03 to 06-09	06-10 to 06-16	06-23	
14	06-17 to 06-23	06-24 to 06-30	07-07	06-19
15	07-01 to 07-07	07-08 to 07-14	07-21	07-04
16	07-15 to 07-21	07-22 to 07-28	08-04	
17	07-29 to 08-04	08-05 to 08-11	08-18	
18	08-12 to 08-18	08-19 to 08-25	09-01	
19	08-26 to 09-01	09-02 to 09-08	09-15	09-04
20	09-09 to 09-15	09-16 to 09-22	09-29	
21	09-23 to 09-29	09-30 to 10-06	10-13	
22	10-07 to 10-13	10-14 to 10-20	10-27	10-09
23	10-21 to 10-27	10-28 to 11-03	11-10	
24	11-04 to 11-10	11-11 to 11-17	11-24	11-11
25	11-18 to 11-24	11-25 to 12-01	12-08	11-23
26	12-02 to 12-08	12-09 to 12-15	12-22	

2024 Pay Periods Begin

Pay Period	Week One	Week Two	Pay Date	Holidays
01	12-16 to 12-22	12-23 to 12-29	01-05	12-25
02	12-30 to 01-05	01-06 to 01-12	01-19	01-01

Wage Overpayment Indebtedness – Tax Treatment

When a Postal Service™ employee is overpaid, the United States Postal Service® establishes an account receivable for the overpayment and initiates the collection of the debt from the employee through the process described in the *Employee and Labor Relations Manual* (ELM), in either ELM 450, “Collection of Postal Debts From Non-bargaining Unit Employees by Salary Offset,” or ELM 460, “Collection of Postal Debts From Bargaining Unit Employees by Salary Offset.”

If the overpayment occurred in a prior year, the Postal Service bills the employee for the gross amount of the overpayment. The gross amount includes the net amount of the check or direct deposit plus all payroll-related taxes withheld and other miscellaneous deductions or allotments. The wages paid in error in the prior year remain W-2 reportable and taxable to the employee for that year. This is because the employee received and had use of those funds during that year. If repayment is made within 3 years of the issuance of the W-2 that includes the overpayment, the employee is entitled to a refund of Social Security (if applicable) and Medicare taxes from the Postal Service. The employee is not entitled to file an amended return (Form 1040X) to recover the federal income tax paid on

these wages. Instead, the employee may be entitled to a deduction (or credit in some cases) for the repaid wages on his or her income tax return for the year of repayment (Internal Revenue Service Publication 15). Employees are encouraged to seek the services of a qualified tax preparer if they have questions.

If the overpayment occurred in the current year, the Postal Service *initially* bills the employee for *only* the net value of the overpayment; thus, federal, state, local, Social Security (if applicable), and Medicare taxes are not part of the bill. However, if an employee has not fully repaid the overpayment by the end of the tax year (December 31, 2022), the Postal Service must report the unreturned value of the overpayment as taxable income on the employee’s Form W-2. Additionally, the employee must now pay appropriate federal, state, local, and FICA/Medicare taxes on the remaining value of the unpaid debt. The Postal Service establishes a second account receivable at the close of the tax year for the value of the taxes the employee owes related to the unpaid debt. The Postal Service uses the debt collection processes in ELM 450 and ELM 460 to collect the additional debt.

– Payroll, Controller, 12-15-22

Mailing and Shipping Services

Priority Mail Express Holiday Refund Eligibility

During the holidays, increased volume and weather conditions may affect the Postal Service’s ability to transport all Priority Mail Express® 1-day shipments. Like our competitors, the Postal Service™ has an adjusted postage refund policy for Priority Mail Express items sent from December 22 through December 25, 2022.

While the Postal Service fully expects Priority Mail Express 1-day service to remain where available, postage will not be refunded unless the first delivery attempt or

delivery occurs more than two delivery days after the acceptance scan event. For questions about this policy, send an email to ShippingServices@usps.gov.

Additionally, beginning July 1, 2023, USPS® Corporate Accounts will no longer be available as a payment method. Customers must switch to a new method of payment as soon as possible. For assistance with account migration, contact the sales representative for your territory or send an email to the Mailing and Shipping Services Center at MSSC@usps.gov.

– Shipping and Commerce Product Management,
Business Solutions, 12-15-22

Priority Mail Regional Rate Boxes A and B will be Discontinued

Effective January 22, 2023 (and subject to approval by the Postal Regulatory Commission), Priority Mail® Regional Rate Boxes A and B will be discontinued, and the current pricing for these boxes will no longer be applicable. Customers with Priority Mail Regional Rate Boxes A and B in their inventory can still use them for shipping, but they will be processed as weight and rate packages.

The United States Postal Service® introduced Priority Mail Regional Rate Boxes A and B in 2011. They were created to combine the speed and convenience of Priority Mail and Priority Mail International® shipping with zone pricing to potentially reduce commercial customers' shipping costs. These boxes are currently available on The Postal Store® website at usps.com, in packs of 10 and 25, with the following dimensions (L x W x H):

- Priority Mail Regional Rate Box A1 — 10-1/8" x 7-1/8" x 5"
- Priority Mail Regional Rate Box A2 — 13-1/16" x 11-1/16" x 2-1/2"
- Priority Mail Regional Rate Box B1 — 12-1/4" x 10-1/2" x 5-1/2"
- Priority Mail Regional Rate Box B2 — 15" x 12" x 3"

Priority Mail Regional Rate Boxes A1 and A2 have a maximum weight requirement of 15 pounds for domestic shipping and 10 pounds for international shipping. Priority

Mail Regional Rate Boxes B1 and B2 have a maximum weight requirement of 20 pounds for both domestic and international shipping.

After conducting a Return on Investment analysis, the Postal Service™ decided to discontinue further production of these boxes as part of an effort to simplify the Priority Mail products offering. Customers who currently use these boxes are encouraged to place orders before supplies are depleted.

The recommended alternative to these boxes is Priority Mail Cubic. Priority Mail Cubic is a sub-service of Priority Mail in which the commercial customer ships using their own packaging and the pricing is based on the outer dimensions of the package rather than its weight. Additionally, this option offers similar cost savings. Priority Mail Cubic packages must:

- Measure 0.5 cubic feet or less;
- Weigh 20 pounds or less; and
- May not exceed 18 inches (at the longest dimension).

Priority Mail Cubic offers zone pricing with five price tiers up to 0.5 cubic feet (see pe.usps.com/text/dmm300/Notice123.htm).

For questions about this change, send an email to expeditedpackaging@usps.gov.

— Shipping and Commerce Product Management,
Business Solutions, 12-15-22

Pull-Out Information

Fraud

Invalid USPS Corporate Account Numbers

Provide this listing to Contract Postal Units and acceptance clerks in non-POS locations without intranet access to validate a USPS Corporate Account (USPSCA) number online. For all other locations, online USPSCA validation is preferred. This list supersedes all previous notices, which you must recycle.

Acceptance clerks must not accept Priority Mail Express® shipments bearing an invalid USPSCA number in the “Payment by Account” or “Agreement Number” section of the label or form.

Note: The first 6 digits of a 9-digit Custom Designed Service and Next Day Pickup Agreement make up the Corporate Account Number.

006810	022913	105033	127053	332691	381798	915243	940337	941383	950148	951337	980071	982027
006994	022935	105341	142020	333585	386061	920111	940357	941432	950211	951543	980232	982075
007353	030233	105453	142203	334003	400063	921429	940386	941596	950305	951546	980404	982215
008107	031234	105631	142272	334195	441787	921613	940480	941721	950319	951570	980418	982386
008195	040323	106001	142822	337394	441972	921619	940488	941729	950512	951623	980461	982425
008257	047013	107324	152702	340640	487115	921730	940490	941850	950692	951637	980501	982427
008392	075004	108020	191396	349198	551511	921747	940516	941879	950757	951784	980542	982446
008415	076880	108867	197020	370005	551991	921790	940529	941923	950804	951848	980664	982480
008582	077498	108951	198160	370007	559030	921855	940535	941987	950816	951875	980671	982505
008702	077779	109148	232180	372274	601194	933154	940601	945548	950847	951924	980683	983045
009765	080323	109149	276273	372884	601351	933428	940607	948507	950853	951938	980769	983056
010112	080632	109871	301104	373004	601872	939512	940829	949517	950881	951941	980824	983115
015759	080648	120281	301652	374006	672526	940019	940987	949545	950934	951947	981762	988022
018339	080714	124015	312504	376122	701951	940082	941101	949611	950985	951979	981831	992082
019521	095816	125068	314726	379251	752838	940086	941189	949614	951064	967069	981864	992230
021048	096703	125338	315029	379505	895479	940208	941222	950075	951112	968633	981921	992377
021647	100993	126052	331238	381198	900111	940213	941297	950089	951274	976012	981935	992529
022028	104644	127018	332083	381408	911225	940321	941355	950111	951316	977051	981984	992553

— Product Information Requirements, Mail Entry and Payment Technology, 12-15-22

Celebrate the 50th Anniversary of

Title IX

Civil Rights
legislation
with
USPS
Forever[®]
Stamps



On Sale
Nationwide:
March 3, 2022



Missing, Lost, or Stolen U.S. Money Order Forms

Do Not Cash — Upon Receipt, Notify Local Postal Inspectors

Provide this listing to all Postal Service™ employees responsible for accepting and cashing postal money orders. Destroy all interim notices when the numbers listed appear in the *Postal Bulletin*. The new money order serial

numbers consist of the first 10 digits. The eleventh digit is a check digit only.

Do not cash outdated money orders **104 151 601 to 692 600 000**. Advise holders to send invalid money orders to Canada Post Corporation, Ottawa, Canada K1A 0B1. Check for altered dollar amounts by holding money orders to the light.

010 001 0200	to	0299	043 205 5922	to	5999	083 784 8886	to	8899	174 281 9347	to	9399
010 504 1932	to	1999	044 087 3457	to	3499	083 913 6915	to	6999	175 251 2600	to	0699
011 582 1889	to	1899	044 087 4000	to	4099	084 478 3920	to	3999	176 281 7937	to	7950
011 588 2900	to	3099	044 226 2487	to	2512	086 000 8271	to	8299	176 281 7963	to	7999
012 441 0784	to	0799	044 306 4200	to	4299	086 798 3840	to	3849	176 731 6586	to	6599
012 579 5675	to	5699	044 306 4370	to	4599	088 404 4472	to	4499	178 254 5000	to	9999
013 289 6176	to	6199	045 524 4121	to	4298	088 404 5584	to	5699	178 881 9900	to	9999
013 610 0014	to	0099	046 800 9870	to	9899	088 757 8688	to	8699	180 031 2089	to	2098
014 932 1000	to	1099	047 352 4000	to	4099	088 757 9400	to	9499	180 403 7723	to	7741
014 972 0800	to	0899	048 383 7650	to	7659	089 358 2248	to	2257	180 428 4580	to	0599
015 363 0065	to	0099	048 396 3647	to	3699	090 663 9678	to	9684	182 368 7544	to	0599
017 028 3200	to	3299	051 142 0755	to	0799	091 818 0071	to	0099	182 475 3229	to	3258
018 569 5333	to	5399	051 774 8857	to	8899	093 106 9346	to	9355	182 475 3904	to	3933
018 986 5264	to	5299	051 781 2875	to	2885	093 203 0500	to	0599	182 631 0031	to	0099
019 518 2814	to	2899	051 977 7010	to	7023	093 684 3630	to	3699	182 911 6539	to	6600
020 698 5159	to	5199	052 058 7115	to	7199	094 081 5074	to	5099	184 218 2760	to	2799
020 844 7307	to	7399	054 450 1130	to	1167	094 216 2555	to	2599	185 828 1474	to	1499
020 972 8948	to	8999	057 670 0563	to	0599	094 580 7062	to	7099	186 132 7583	to	0599
022 021 9110	to	9181	058 187 3836	to	3899	094 639 4200	to	4299	186 629 0589	to	0599
022 037 1411	to	1499	058 523 3003	to	3099	095 070 7186	to	7199	187 184 6177	to	0199
022 527 9201	to	9210	058 591 1153	to	1299	095 076 8300	to	8399	187 323 8200	to	8299
022 529 1882	to	1899	058 895 3746	to	3799	095 354 6864	to	6899	187 441 6080	to	6099
023 637 7169	to	7199	059 986 0814	to	0899	097 224 1350	to	1599	188 831 6774	to	6799
024 380 4100	to	4199	060 406 7650	to	7699	100 160 3800	to	3899	188 835 6370	to	6399
024 496 6870	to	6896	063 491 8122	to	8199	104 667 6400	to	6499	189 083 1064	to	1099
025 092 0987	to	0999	063 916 9968	to	9999	104 876 8937	to	8999	189 660 9583	to	9599
025 369 5535	to	5599	064 091 4500	to	4599	112 049 4413	to	4499	191 179 0377	to	0399
025 729 1151	to	1199	065 170 0471	to	0499	112 870 9765	to	9799	192 050 5762	to	5781
025 729 1643	to	1799	065 255 7909	to	7999	113 319 2000	to	2099	194 456 8600	to	0699
026 492 3180	to	3199	065 392 6345	to	6399	114 402 3850	to	3899	195 194 6881	to	6899
027 361 0430	to	0499	066 099 2014	to	2099	114 866 5368	to	5397	195 874 1112	to	1199
027 369 4482	to	4495	066 648 2880	to	2899	116 154 2800	to	2899	196 979 0524	to	0599
027 671 8762	to	8776	066 787 3639	to	3699	116 986 4400	to	4499	197 244 6100	to	6199
027 787 9886	to	9899	066 845 7500	to	9999	117 175 1647	to	5169	197 244 6300	to	6399
027 965 9487	to	9499	067 093 3869	to	3899	117 951 4687	to	4699	197 244 6400	to	6499
028 100 8069	to	8099	068 895 0334	to	0399	117 951 5200	to	5299	197 244 6500	to	6599
028 191 1852	to	1999	070 724 4488	to	4499	119 786 3051	to	3064	197 244 6600	to	6699
028 850 3000	to	3199	070 841 9181	to	9199	119 815 8961	to	6199	197 244 6700	to	6799
029 510 1500	to	1599	070 844 2546	to	2599	119 850 7400	to	7499	197 244 6800	to	8999
030 687 0903	to	0999	070 916 1340	to	1399	119 850 7700	to	7999	198 285 2556	to	2566
030 701 3442	to	3499	071 047 5768	to	5799	121 634 0460	to	0499	199 105 0778	to	0799
031 077 4507	to	4799	071 179 9800	to	9899	122 451 9879	to	9899	199 678 2968	to	2999
032 295 7500	to	9999	071 386 3682	to	3699	122 714 6805	to	6900	202 748 5133	to	5199
034 394 1000	to	1099	071 507 6840	to	6899	124 916 0304	to	0499	202 748 5245	to	5299
034 943 0400	to	0799	072 045 9641	to	9699	126 423 0136	to	0169	202 748 5300	to	5399
035 035 4337	to	4399	072 675 8287	to	8299	127 500 2328	to	2399	202 748 5400	to	5499
037 312 7500	to	7599	073 763 0867	to	0876	160 901 2254	to	2299	203 256 1240	to	1299
037 706 9578	to	9599	073 763 0878	to	0887	161 103 6581	to	6599	204 230 3577	to	3595
037 805 3677	to	3699	073 763 0889	to	0898	161 194 2857	to	0899	205 019 0174	to	0199
037 909 5490	to	5499	077 617 5481	to	5499	162 032 4447	to	4499	206 936 3184	to	3199
037 931 4660	to	4699	077 999 4001	to	4090	163 257 1085	to	1099	207 196 9900	to	9999
039 145 6521	to	6595	078 174 4475	to	4499	164 359 2406	to	2499	207 204 0700	to	0799
040 024 3901	to	3999	078 219 4931	to	4999	166 101 1433	to	1499	207 204 0800	to	0899
040 674 7100	to	7199	078 250 4756	to	4799	167 555 5201	to	5212	207 514 3857	to	3899
040 688 8816	to	8899	078 823 8312	to	8399	167 555 5214	to	5299	208 556 4707	to	4799
041 299 6752	to	6799	079 374 0300	to	2499	169 618 6274	to	6299	210 057 4038	to	4047
041 623 8889	to	8899	079 807 2342	to	2399	171 806 6878	to	6893	210 221 0548	to	0599
041 803 6565	to	6599	082 721 0228	to	0254	173 639 4685	to	4699	214 061 4711	to	4724
043 129 1968	to	1997	083 140 5000	to	7499	174 238 2779	to	2799	214 303 6311	to	6325

214 303 6239	to	6258	252 469 2125	to	2199	258 405 6400	to	6499	262 337 4500	to	4599
214 877 4251	to	4273	252 833 3286	to	3297	258 405 6800	to	6899	262 337 4600	to	4699
215 252 3918	to	3992	253 470 3948	to	3999	258 405 6900	to	6999	262 337 4700	to	4799
217 585 1400	to	1499	253 565 7400	to	7499	258 405 7000	to	7099	262 337 4800	to	4899
218 698 2157	to	2199	254 252 2800	to	2899	258 405 7100	to	7199	262 337 4900	to	4999
218 746 0800	to	0899	254 252 2900	to	2999	258 405 7200	to	7299	262 337 5000	to	5099
219 095 0100	to	0399	254 252 3000	to	3099	258 405 7300	to	7399	262 337 5100	to	5199
219 389 1885	to	1899	254 252 3100	to	3199	258 405 7400	to	7499	262 337 5200	to	5299
219 568 7435	to	7456	254 252 3200	to	3299	258 405 7800	to	7899	262 337 5300	to	5399
219 568 7469	to	7487	254 252 3300	to	3399	258 405 7900	to	7999	262 337 5400	to	5499
221 316 5757	to	5799	254 252 3400	to	3499	258 405 8000	to	8099	262 337 5500	to	5599
223 476 3914	to	3999	254 252 3500	to	3599	258 405 8100	to	8199	262 337 5600	to	5699
223 565 4921	to	4957	254 252 3600	to	3699	258 405 8200	to	8299	262 337 5700	to	5799
223 565 4979	to	4999	254 252 3700	to	3799	258 405 8300	to	8399	262 337 5800	to	5899
224 636 4745	to	4765	254 252 3800	to	3899	258 405 8400	to	8499	262 337 5900	to	5999
224 636 4776	to	4799	254 252 3900	to	3999	258 405 8500	to	8599	262 337 6000	to	6099
224 636 4855	to	4885	254 252 4000	to	4099	258 405 8600	to	8699	262 337 6100	to	6199
224 636 4932	to	4948	254 252 4100	to	4199	258 405 8700	to	8799	262 337 6200	to	6299
224 636 4950	to	4962	254 252 4200	to	4299	258 405 8800	to	8899	262 337 6300	to	6399
224 636 4985	to	4999	254 252 4300	to	4399	258 405 8900	to	8999	262 337 6400	to	6499
224 723 0757	to	0799	254 252 4400	to	4499	258 405 9600	to	9699	262 337 6500	to	6599
224 730 2207	to	2299	254 252 4500	to	4599	258 405 9700	to	9799	262 337 6600	to	6699
225 970 0500	to	0599	254 252 4600	to	4699	258 405 9800	to	9899	262 337 6700	to	6799
225 970 0600	to	0699	254 252 4700	to	4799	258 405 9900	to	9999	262 337 6800	to	6899
225 970 0700	to	0799	254 252 4800	to	4899	259 014 9989	to	9999	262 337 6900	to	6999
227 033 8679	to	8699	254 252 4900	to	4999	259 062 4788	to	4798	262 337 7000	to	7099
227 275 9400	to	9999	254 565 7607	to	7700	259 218 1400	to	1499	262 337 7100	to	7199
228 463 2456	to	2499	254 907 1203	to	1299	259 218 1500	to	1599	262 337 7200	to	7299
228 510 4852	to	4899	255 185 9527	to	9599	259 218 1600	to	1699	262 337 7300	to	7399
229 462 8451	to	8475	255 397 1557	to	1576	259 590 5654	to	5699	262 337 7400	to	7499
229 668 5977	to	5999	255 425 2989	to	2998	259 670 8268	to	8299	262 337 7500	to	7599
229 923 9176	to	9199	255 728 6412	to	6499	259 835 6238	to	6399	262 337 7600	to	7699
229 924 6696	to	6699	255 728 9842	to	9899	259 835 6701	to	6799	262 337 7700	to	7799
230 051 9500	to	9999	256 134 9833	to	9839	260 224 4600	to	4699	262 337 7800	to	7899
236 366 2431	to	2499	256 134 9840	to	9849	260 224 5941	to	5999	262 337 7900	to	7999
236 607 6882	to	6899	256 134 9850	to	9859	260 310 2821	to	2899	262 337 8000	to	8099
236 660 5853	to	5872	256 134 9860	to	9869	260 452 0010	to	0022	262 337 8100	to	8199
239 322 5200	to	5299	256 134 9870	to	9879	260 452 0049	to	4299	262 337 8200	to	8299
239 322 5400	to	5499	256 134 9880	to	9889	260 553 8200	to	8299	262 337 8300	to	8399
239 322 5600	to	5699	256 134 9890	to	9899	260 553 8600	to	8699	262 337 8400	to	8499
239 322 5800	to	5899	256 247 6900	to	6999	260 553 9600	to	9799	262 337 8500	to	8599
239 322 5900	to	5999	256 550 5536	to	5545	260 553 9800	to	9899	262 337 8600	to	8699
239 607 4783	to	4799	256 799 2257	to	2299	260 553 9900	to	9999	262 337 8700	to	8799
240 593 1879	to	1899	257 154 8763	to	8799	260 761 1603	to	1662	262 337 8800	to	8899
242 591 2048	to	2099	257 154 8800	to	8899	261 183 2100	to	2299	262 337 8900	to	8999
242 735 0388	to	0398	257 765 4567	to	4599	261 426 0408	to	0499	262 337 9000	to	9099
242 951 7276	to	7299	257 765 4610	to	4696	262 082 8000	to	8099	262 337 9100	to	9199
243 535 6370	to	6399	257 765 4737	to	4799	262 082 8100	to	8199	262 337 9200	to	9299
244 004 9985	to	9999	257 792 7800	to	7889	262 082 8200	to	8299	262 337 9300	to	9399
244 004 9985	to	9999	257 792 7900	to	7999	262 082 8300	to	8399	262 337 9400	to	9499
244 268 9765	to	9799	257 792 8000	to	8099	262 082 8400	to	8499	262 337 9500	to	9599
244 347 4471	to	4499	257 856 9863	to	9899	262 288 7302	to	7399	262 337 9600	to	9699
249 056 1551	to	1599	258 103 1773	to	1782	262 288 7400	to	7499	262 337 9700	to	9799
249 336 9438	to	9499	258 405 1800	to	1899	262 288 9900	to	9999	262 337 9800	to	9899
249 399 4000	to	4099	258 405 1900	to	1999	262 337 2600	to	2699	262 337 9900	to	9999
249 399 4100	to	4199	258 405 3300	to	3399	262 337 2700	to	2700	262 472 3188	to	3199
249 399 4200	to	4299	258 405 3400	to	3499	262 337 2800	to	2800	262 472 3200	to	3299
249 399 4300	to	4399	258 405 3500	to	3599	262 337 2900	to	2900	262 546 3100	to	3199
249 399 4400	to	4499	258 405 3700	to	3799	262 337 3000	to	3099	262 546 3200	to	3299
249 399 4500	to	4599	258 405 3800	to	3899	262 337 3100	to	3199	262 546 3300	to	3399
249 399 4600	to	4699	258 405 3900	to	3999	262 337 3200	to	3299	262 546 3400	to	3499
249 399 4700	to	4799	258 405 4000	to	4099	262 337 3300	to	3399	262 546 3500	to	3599
249 399 4800	to	4899	258 405 4100	to	4199	262 337 3400	to	3499	262 546 3600	to	3699
249 399 4900	to	4999	258 405 4200	to	4299	262 337 3500	to	3599	262 546 3900	to	3999
250 159 7502	to	7599	258 405 4600	to	4699	262 337 3600	to	3699	262 546 4300	to	4399
250 566 9644	to	9699	258 405 5600	to	5699	262 337 3700	to	3799	262 546 4400	to	4499
250 661 8425	to	8499	258 405 5700	to	5799	262 337 3800	to	3899	262 546 4500	to	4599
251 335 5731	to	5799	258 405 5800	to	5899	262 337 3900	to	3999	262 546 4600	to	4699
251 379 2380	to	2399	258 405 5900	to	5999	262 337 4000	to	4099	262 546 4700	to	4799
252 005 7626	to	7699	258 405 6000	to	6099	262 337 4100	to	4199	262 546 4800	to	4899
252 421 8401	to	8499	258 405 6100	to	6199	262 337 4200	to	4299	262 546 4900	to	4999
252 464 2810	to	2899	258 405 6200	to	6299	262 337 4300	to	4399	262 546 7100	to	7199
252 612 3683	to	3699	258 405 6300	to	6399	262 337 4400	to	4499	262 546 7200	to	7299

262 546 7300	to	7399	386 883 8936	to	8999	410 694 8400	to	8599	434 513 2386	to	2399
262 546 7400	to	7499	387 314 5574	to	5599	410 775 1500	to	1599	434 968 3076	to	3092
262 546 9800	to	9899	387 837 6300	to	6399	410 795 7927	to	7999	435 303 1831	to	1842
262 546 9900	to	9999	388 828 0656	to	0699	410 867 0917	to	0966	435 303 1986	to	1999
262 567 1788	to	1799	389 696 2400	to	2799	410 867 0970	to	0999	435 666 6092	to	6399
263 254 2500	to	2500	389 846 3104	to	3135	411 868 1023	to	1199	436 082 6400	to	6899
263 340 0000	to	0099	389 846 3145	to	3195	411 922 2322	to	2399	436 160 6441	to	6499
263 340 0100	to	0199	389 887 9211	to	9230	412 193 0900	to	0999	437 316 7115	to	7199
263 340 0500	to	0599	389 887 9234	to	9299	412 395 8599	to	8699	437 427 0500	to	3499
263 340 0600	to	0699	390 001 3182	to	3199	412 485 6500	to	6599	439 179 2300	to	2399
263 340 2700	to	2799	390 001 3500	to	3699	412 485 6610	to	6699	439 310 0458	to	0499
263 340 2800	to	2899	390 545 5974	to	5999	412 885 5953	to	5999	440 698 1947	to	1999
263 340 3000	to	3099	391 104 6146	to	6199	414 193 3608	to	3674	440 858 6300	to	6399
264 341 2360	to	2399	391 574 1466	to	1499	414 193 3677	to	3699	440 858 6420	to	7299
264 380 4000	to	4099	391 783 3020	to	3599	414 411 7348	to	7399	441 199 1655	to	1699
264 380 4100	to	4199	391 792 6100	to	6199	414 640 0757	to	0799	443 127 3648	to	3699
264 799 6049	to	6099	392 668 2956	to	2999	414 965 1727	to	1799	443 127 4000	to	4099
264 860 7832	to	7868	392 854 8500	to	8899	417 302 8104	to	8199	443 673 7900	to	7999
265 127 3658	to	3699	393 584 7566	to	7699	417 485 6532	to	6599	443 800 9335	to	9399
265 380 7111	to	7137	393 650 0074	to	0099	417 496 6800	to	6999	444 382 8822	to	8899
265 444 4762	to	4799	393 838 8316	to	8499	417 871 9250	to	9299	444 390 1667	to	1699
265 548 7074	to	7099	393 893 6007	to	6099	417 930 9533	to	9599	444 457 3854	to	3899
266 106 0000	to	2499	394 126 6907	to	6999	418 164 6500	to	6799	450 048 4173	to	4199
266 129 5809	to	5899	394 189 0405	to	0599	418 423 9863	to	9899	450 048 4442	to	4699
266 673 0000	to	2499	394 822 3243	to	3278	418 633 5922	to	5999	450 560 5173	to	5199
266 749 7900	to	7999	394 990 1810	to	1899	418 719 8520	to	8599	450 620 3077	to	3099
266 868 0952	to	0999	395 343 3264	to	3299	418 744 2235	to	2299	450 620 3135	to	3199
266 868 1028	to	1099	395 373 3035	to	3099	418 962 2848	to	2899	450 780 2716	to	2799
266 868 1100	to	1199	395 396 9649	to	9799	419 543 0286	to	0299	450 801 2700	to	2799
266 868 1200	to	1299	395 970 3240	to	3299	419 730 0300	to	0399	451 109 2967	to	2984
267 296 1237	to	1299	397 622 4054	to	4099	420 277 0015	to	0049	451 115 4110	to	4125
267 324 8946	to	8998	397 819 8902	to	8999	420 599 0734	to	0798	451 115 4127	to	4199
268 072 1203	to	1299	398 149 7200	to	7699	420 661 4115	to	4199	451 746 0700	to	0799
271 660 4333	to	4400	399 070 0872	to	0899	420 758 9500	to	9699	452 265 0074	to	0099
273 520 0000	to	9999	399 156 7119	to	7199	420 969 3951	to	3971	452 265 0246	to	0299
273 520 6000	to	8999	399 203 5064	to	5099	420 969 3973	to	3999	452 265 0335	to	0999
273 775 7700	to	7899	399 296 9910	to	9999	421 116 3565	to	3599	452 509 1169	to	1199
273 882 1913	to	1998	399 396 8935	to	8999	421 130 9300	to	9399	452 855 6471	to	6499
274 750 0300	to	0400	399 792 7775	to	7799	421 313 4500	to	4999	452 890 4679	to	4799
274 782 0549	to	0599	399 792 8300	to	8399	421 364 5537	to	5599	452 900 8215	to	8238
279 517 9330	to	9399	400 427 1051	to	1999	421 656 2609	to	2699	453 117 9146	to	9199
279 517 9594	to	9599	401 045 1505	to	1549	421 988 9700	to	9799	453 334 3631	to	3699
279 517 9623	to	9699	401 045 1571	to	1599	422 172 4667	to	4699	453 603 7841	to	7891
282 667 2500	to	4999	401 294 2700	to	2799	422 484 4212	to	4299	453 650 1140	to	1199
302 000 0000	to	9999	401 310 9505	to	9599	422 556 1270	to	1299	453 741 1300	to	1399
349 746 2056	to	2099	401 382 5312	to	5399	422 587 7024	to	7099	454 013 2919	to	2999
350 518 7350	to	7374	402 578 7876	to	7899	422 819 7533	to	7599	454 186 2411	to	2499
360 011 1690	to	1699	403 125 6744	to	6799	422 842 5073	to	5087	454 268 4883	to	4899
360 168 6008	to	6099	403 260 7000	to	7499	422 907 7563	to	7599	454 302 5400	to	5499
360 173 8800	to	8899	403 280 6470	to	6499	424 500 6050	to	6099	454 490 8300	to	8399
360 324 2326	to	2399	403 685 8600	to	8699	424 641 8500	to	8599	454 547 7434	to	7499
362 861 3064	to	3099	404 003 0300	to	0399	424 871 6600	to	6699	454 922 4867	to	4895
373 006 2176	to	2199	404 041 8838	to	8899	425 298 2352	to	2399	455 221 1348	to	1499
374 768 2600	to	2699	404 071 4268	to	4299	425 418 4269	to	4299	455 364 2147	to	2199
375 169 4400	to	4599	404 347 5356	to	5399	425 418 4405	to	4499	455 399 5400	to	5499
375 829 3400	to	3499	404 347 5548	to	5599	426 547 4566	to	4599	455 476 0676	to	0699
375 851 9100	to	9199	404 726 4500	to	4599	427 412 6337	to	6499	455 543 0618	to	0699
376 196 0911	to	0999	404 961 5001	to	5199	427 481 0900	to	0999	456 410 9006	to	9099
378 085 3679	to	3699	405 325 0188	to	0198	428 027 2742	to	2752	456 470 4146	to	4299
378 351 1063	to	1099	406 009 4587	to	4599	429 474 4172	to	4199	456 619 4460	to	4499
379 843 5100	to	5199	406 260 6830	to	6899	429 889 2900	to	2999	457 333 2686	to	2699
380 093 9600	to	9699	406 459 6641	to	6999	430 150 4401	to	4599	457 729 1767	to	1777
380 165 1165	to	1199	406 733 3000	to	3999	430 172 9800	to	9899	457 937 8615	to	8699
381 325 4500	to	4599	407 545 1557	to	1599	430 177 1900	to	2099	458 028 9810	to	9899
381 604 2510	to	2699	407 594 0412	to	0599	430 444 9500	to	9699	458 057 2712	to	2999
381 645 9525	to	9599	407 692 9100	to	9299	430 664 4070	to	4099	458 069 9537	to	9599
383 314 3968	to	3999	407 959 2190	to	2199	432 168 8419	to	8499	458 069 9665	to	9699
383 892 1000	to	1344	408 265 2275	to	2288	432 708 6800	to	6999	458 337 5222	to	5299
383 892 1382	to	1399	408 499 7700	to	7799	432 744 1544	to	1599	458 354 7653	to	7999
384 925 3641	to	3654	408 499 7900	to	7999	432 995 9775	to	9799	458 671 8678	to	8699
385 568 2331	to	2399	408 682 8484	to	8599	433 003 5800	to	5899	458 671 8721	to	8798
385 599 7554	to	7575	408 698 7015	to	7099	433 757 3047	to	3099	458 847 5044	to	5999
385 774 2024	to	2099	409 072 3941	to	3999	433 765 4003	to	4099	459 274 7624	to	7699
386 624 1412	to	1599	410 491 2311	to	2399	434 482 7060	to	7199	459 365 5432	to	5499

459 378 5764	to	5799	480 526 2000	to	2099	502 496 6923	to	6999	609 067 5488	to	5499
459 472 4816	to	4999	480 640 6330	to	6399	503 003 2700	to	2899	609 067 5600	to	5699
460 349 6878	to	6899	480 658 0568	to	0599	503 194 5144	to	5153	609 289 6123	to	6199
460 550 1909	to	1999	480 689 5100	to	5199	503 790 9922	to	9948	609 438 4400	to	4499
460 997 5234	to	5299	481 072 9463	to	9499	504 045 4030	to	4099	609 493 1100	to	1199
461 973 6443	to	6499	481 673 0074	to	0095	504 166 0200	to	0599	609 766 8091	to	8999
462 152 0107	to	0299	482 527 1500	to	1599	504 240 1062	to	1399	609 825 4100	to	4115
462 274 1072	to	1099	482 541 5255	to	5299	504 805 3300	to	3499	609 884 2981	to	2999
462 277 8373	to	8399	482 729 6800	to	6899	505 096 0662	to	0699	609 893 1000	to	1099
462 554 6051	to	6099	483 363 7207	to	7299	505 893 7739	to	7799	610 092 3200	to	3299
463 011 5529	to	5540	483 402 2356	to	2399	505 893 7800	to	7999	610 582 4200	to	4299
463 176 4115	to	4199	483 486 5100	to	5199	506 124 0800	to	0999	611 879 6939	to	6999
463 176 4229	to	4299	483 632 1521	to	1599	506 165 7027	to	0099	612 291 8013	to	8099
463 185 2600	to	2799	483 632 2600	to	2799	506 502 5209	to	5299	612 751 5171	to	5199
463 227 7711	to	7799	483 849 1615	to	1699	506 756 1682	to	1699	612 751 5226	to	5299
463 414 4869	to	4899	484 174 4803	to	5299	506 756 1700	to	1799	612 751 6083	to	6099
463 808 3484	to	3499	484 323 8900	to	9199	506 756 1800	to	1899	612 751 6268	to	6299
463 945 7400	to	7899	484 680 5000	to	5038	506 836 5326	to	5399	612 751 6572	to	6599
464 629 9000	to	9399	484 680 5040	to	5074	508 488 6226	to	6299	612 774 2111	to	2199
464 711 4332	to	4399	484 680 5077	to	5099	508 789 8332	to	8399	612 774 2254	to	2299
465 692 3963	to	3999	485 029 4913	to	4999	508 789 8400	to	8499	612 774 2500	to	2599
465 698 8300	to	8599	486 176 0600	to	0699	509 909 0425	to	0435	614 469 0979	to	0999
465 743 7745	to	7799	486 559 7555	to	7599	510 150 2400	to	2499	614 474 3000	to	3099
466 798 6056	to	6067	486 696 3023	to	3199	510 381 3200	to	3299	614 521 3490	to	3499
467 147 4300	to	4399	488 173 7900	to	7999	510 587 9500	to	9599	614 645 1800	to	1899
468 079 5782	to	5799	488 206 4100	to	4199	510 587 9659	to	9699	614 832 1100	to	2099
469 067 2817	to	2899	488 226 0200	to	0299	510 269 9770	to	9999	615 017 7505	to	7599
469 127 8000	to	8199	488 709 3906	to	3999	511 021 5042	to	5099	617 711 6609	to	6699
469 213 0359	to	0399	488 855 8359	to	8399	511 021 5100	to	5199	617 760 5266	to	5299
469 213 0500	to	0599	489 181 8963	to	8999	511 468 1747	to	1799	617 813 3601	to	3699
469 561 8011	to	8099	489 223 2000	to	2099	511 844 0100	to	0199	618 840 9200	to	9299
469 658 1961	to	1999	489 311 1930	to	1999	511 844 0340	to	0399	619 551 7229	to	7299
469 666 9900	to	9999	489 318 6200	to	6300	512 805 3913	to	3919	619 859 3000	to	3099
469 678 1900	to	1999	489 384 0027	to	0099	513 046 0700	to	0726	620 073 9400	to	9499
469 781 4900	to	4999	489 427 0658	to	0899	513 149 0600	to	0699	621 614 7907	to	7930
469 947 6960	to	6999	489 997 5252	to	5299	513 445 3000	to	3199	621 614 7932	to	7999
470 755 5800	to	5818	490 669 5850	to	6099	513 466 2034	to	2044	621 648 8021	to	8199
471 918 0300	to	0999	490 717 7080	to	7099	513 539 9052	to	9099	621 648 8500	to	8599
471 985 2408	to	2419	490 721 6000	to	6099	513 539 9267	to	9299	621 904 8351	to	8599
472 191 6700	to	6799	490 793 1500	to	2099	513 539 9800	to	9899	621 916 1978	to	1989
472 270 2555	to	2599	490 886 8171	to	8199	513 539 9985	to	9999	622 989 8032	to	8099
472 987 0213	to	0241	490 977 9221	to	9240	513 606 5459	to	5490	623 076 9300	to	9399
472 987 0290	to	0299	491 258 8100	to	9099	513 812 1751	to	1799	623 819 5006	to	5099
473 151 2069	to	2199	491 567 1376	to	1399	514 103 3600	to	3699	623 895 8200	to	8399
473 666 9138	to	9199	492 254 4800	to	4899	514 103 3700	to	3799	623 917 0000	to	0099
473 952 3429	to	3499	492 283 5100	to	5199	514 103 3800	to	3899	623 917 0200	to	0299
474 108 5402	to	5499	492 610 6813	to	6899	600 645 3223	to	3299	624 468 5288	to	5299
474 356 5193	to	5299	493 394 5568	to	5599	601 339 1200	to	1399	624 665 3162	to	3198
474 949 3366	to	3399	493 470 2562	to	2599	601 653 5884	to	5899	625 088 6735	to	6799
475 134 9362	to	9399	493 473 7700	to	7799	601 661 7700	to	7799	625 916 9500	to	9799
475 167 9667	to	9699	493 716 2153	to	2199	601 682 5343	to	5399	625 968 8956	to	8999
475 319 3415	to	3499	494 206 2972	to	2999	601 928 1600	to	1699	627 005 3938	to	3999
475 319 3649	to	3799	494 217 3446	to	3999	602 512 2972	to	2999	627 384 3907	to	4099
475 340 6400	to	6599	494 224 0500	to	0599	602 555 2400	to	2799	627 496 7549	to	7599
475 424 8410	to	8499	495 145 0600	to	0699	602 829 7061	to	7099	627 708 3605	to	3699
475 629 9156	to	9199	496 209 7425	to	7499	603 483 9572	to	9599	627 776 2500	to	2599
475 850 6101	to	6199	496 213 8728	to	8799	603 490 7200	to	7299	628 226 3100	to	3199
475 875 2500	to	2599	496 474 5226	to	5248	603 678 7100	to	7199	628 814 4702	to	4799
476 169 8264	to	8299	497 053 8517	to	8699	603 678 7662	to	7699	628 851 9689	to	9699
476 189 3000	to	3499	497 854 8673	to	8699	603 678 7902	to	7999	629 510 7200	to	7299
476 331 2480	to	2499	498 449 8888	to	8899	603 678 8418	to	8499	629 964 4200	to	4294
477 289 8601	to	8699	498 929 8285	to	8499	603 678 8700	to	9999	630 389 3056	to	3071
477 681 5206	to	5299	498 936 5310	to	5399	604 086 0880	to	0899	630 463 0588	to	0599
478 010 4243	to	4268	499 016 5425	to	5499	604 349 1414	to	1499	631 459 9117	to	9199
478 010 4270	to	4291	499 440 8575	to	8899	604 503 7776	to	7799	631 762 9325	to	9399
478 450 5071	to	5099	499 731 6717	to	6799	605 520 9037	to	9099	632 217 4933	to	4999
478 469 7838	to	7858	500 064 1858	to	1869	605 685 4010	to	4099	632 500 0000	to	640 3999
478 469 7883	to	7899	500 070 5725	to	7799	605 988 6467	to	6499	633 110 4165	to	4199
479 280 9800	to	9899	501 058 0016	to	0026	607 689 7951	to	7960	633 110 4303	to	4499
479 365 9116	to	9176	501 331 0300	to	0399	607 728 1276	to	1299	633 438 6429	to	6599
479 412 9900	to	9999	501 460 0977	to	0999	608 727 7100	to	7199	633 588 7173	to	7182
479 667 6190	to	6199	502 227 7645	to	7699	608 727 7273	to	7599	634 725 0700	to	0799
479 748 9680	to	9699	502 424 0200	to	0499	608 813 9950	to	9999	634 803 3239	to	3299
479 860 7000	to	7199	502 424 0600	to	0699	609 067 5325	to	5399	634 807 2474	to	2499

634 827 5900	to	5999	650 627 4212	to	4299	682 956 6490	to	6599	701 695 4227	to	4299
634 886 3428	to	3499	650 736 2043	to	2099	682 956 6700	to	6799	701 708 1741	to	1799
635 559 3449	to	3499	650 739 1540	to	1699	682 965 1178	to	1199	701 736 3966	to	3999
636 289 6214	to	6299	651 741 4415	to	4499	682 965 1201	to	1299	701 772 0870	to	0899
636 634 8007	to	8042	651 882 2800	to	2899	683 118 2389	to	2399	701 838 2800	to	2899
637 150 1200	to	1299	652 754 6317	to	6399	683 378 2000	to	2099	701 941 0600	to	0699
637 562 5828	to	5899	653 131 4945	to	4999	683 378 2117	to	2299	702 171 1603	to	1699
638 042 1647	to	1699	653 426 3300	to	3399	683 415 1200	to	1499	702 195 5109	to	5199
638 049 4984	to	4999	653 455 4874	to	4899	683 444 8159	to	8199	702 254 9300	to	9399
638 318 1115	to	1199	654 238 0000	to	0399	685 154 7780	to	7789	702 264 7569	to	7599
638 318 1453	to	1499	654 404 3065	to	3092	685 297 7645	to	7699	702 519 0513	to	0524
638 885 0000	to	0299	654 962 2900	to	3199	685 623 5264	to	5299	702 713 1800	to	1809
638 903 4362	to	4373	655 103 5081	to	5199	685 650 9487	to	9499	702 821 5730	to	5799
639 415 1929	to	1999	655 523 2600	to	2999	685 669 4200	to	4299	702 821 5805	to	5899
639 415 2019	to	2099	656 305 2448	to	2499	685 757 8452	to	8499	702 844 6975	to	6994
639 420 6200	to	6299	657 347 4438	to	4999	686 071 2694	to	2799	702 846 6331	to	6399
639 469 3517	to	3799	657 710 8100	to	8999	686 176 3333	to	3354	702 848 3900	to	3999
639 605 2143	to	2199	657 780 0985	to	0999	686 372 3200	to	3299	702 857 7302	to	7499
639 657 8600	to	8799	658 586 1400	to	1499	686 644 5879	to	5899	702 878 0114	to	0199
640 289 7500 to 7599			658 877 8000	to	8199	686 899 1371	to	1399	703 364 1707	to	1799
640 289 7700	to	7999	658 880 8000	to	8199	686 931 7636	to	7699	740 002 7710 to 7719		
641 170 4420	to	4499	659 398 7300	to	7399	687 601 0973	to	0999	740 037 6730	to	6800
641 318 3133	to	3199	659 706 8113	to	8199	687 614 6774	to	6799	740 119 2275	to	2284
641 378 6500	to	6999	659 846 7837	to	7899	688 120 9000	to	9999	740 130 6688	to	6698
641 383 8739	to	8799	660 510 4100 to 4199			688 314 3107	to	3191	740 144 2780	to	2795
641 877 3187	to	3299	660 673 0400	to	0599	690 291 1361 to 1371			740 241 9049	to	9099
641 877 3310	to	3399	661 488 5000	to	5099	690 788 2877	to	2899	740 252 9265	to	9294
642 355 8094	to	8199	661 609 9100	to	9199	690 893 5344	to	5399	740 255 1718	to	1799
642 355 8308	to	8999	661 716 9420	to	9499	690 893 5512	to	5599	740 274 2602	to	2619
642 900 0018	to	0099	661 906 6522	to	6599	690 904 1300	to	1599	740 277 0366	to	0392
643 030 6254	to	6299	662 021 8332	to	8399	690 941 6000	to	6199	740 332 7658	to	7671
644 066 0882	to	0899	662 068 0700	to	0899	691 313 6383	to	6399	740 348 6641	to	6658
644 069 0600	to	0699	662 553 0774	to	0799	691 313 6600	to	6699	740 351 4790	to	4799
644 077 7506	to	7699	663 078 7034	to	7099	691 582 8003	to	8099	740 374 7416	to	7499
644 085 8157	to	8199	663 763 5300	to	5399	691 664 1800	to	1999	740 470 2420	to	2443
644 112 9839	to	9899	663 883 7039	to	7499	691 664 2400	to	2499	740 514 0300	to	0499
644 373 9083	to	9099	663 938 9200	to	9299	692 727 9362	to	9399	740 523 7432	to	7449
644 380 1460	to	1499	664 253 8000	to	8499	692 798 1800	to	1899	740 535 1555	to	1580
644 733 4715	to	4799	664 656 3055	to	3099	693 249 0779	to	0799	740 557 3570	to	3579
644 900 9712	to	9799	665 174 6400	to	6499	693 249 0877	to	1699	740 650 4104	to	4140
644 901 0109	to	1299	665 274 8208	to	8299	693 445 0566	to	0999	740 684 0620	to	0800
644 901 1325	to	1399	665 669 5400	to	5499	693 448 8500	to	8999	740 701 6105	to	6114
644 923 6800	to	7799	666 132 8226	to	8299	693 645 9583	to	9599	740 705 9790	to	9799
644 932 4655	to	4699	666 696 2209	to	2299	693 965 4200	to	4299	740 726 6400	to	6500
645 318 7240	to	7499	666 696 2309	to	2399	695 741 2906	to	2999	740 748 8319	to	8329
645 333 1766	to	1799	667 032 9300	to	9399	695 947 8518	to	8599	740 765 3306	to	3399
645 790 8632	to	8699	667 729 5529	to	5599	696 662 8247	to	8299	740 774 8434	to	8499
645 821 0657	to	0699	668 383 8400	to	8699	697 447 8285	to	8296	740 779 4259	to	4299
645 930 7948	to	7999	670 368 3400 to 3499			698 042 4816	to	4899	740 786 1885	to	1899
645 975 0737	to	0762	670 369 7336	to	7399	698 131 2138	to	2157	740 790 5989	to	5999
646 242 6200	to	6299	670 750 7169	to	7199	698 227 0000	to	0099	740 803 4870	to	4879
646 270 7639	to	7799	671 046 6200	to	6399	700 065 2570 to 2599			740 820 4854	to	7836
646 798 4000	to	4999	671 251 5448	to	5499	700 065 4800	to	4899	740 827 7578	to	7594
647 048 7035	to	7099	671 926 5600	to	5799	700 190 3350	to	3359	740 917 7490	to	7499
647 049 2900	to	2999	672 444 2000	to	2999	700 228 6048	to	6099	740 918 5531	to	5549
647 398 8300	to	8399	672 828 3410	to	3499	700 650 0452	to	0499	741 037 8528	to	8551
647 398 8481	to	8499	673 167 5776	to	5799	700 666 1323	to	1349	742 030 6135	to	6149
647 437 3000	to	4999	675 464 3700	to	3799	700 786 9106	to	9142	742 033 2663	to	2674
647 811 2188	to	2199	675 464 4000	to	4199	700 859 0744	to	0758	742 040 3300	to	3309
648 009 6057	to	6099	676 365 5958	to	5999	701 028 6780	to	6899	742 112 8155	to	8199
648 163 5300	to	5499	676 669 1024	to	1099	701 213 3900	to	3999	742 151 5000	to	5014
648 722 5283	to	5299	677 126 6734	to	6799	701 267 2000	to	3999	742 191 4640	to	4649
648 892 3164	to	3199	677 333 9979	to	9999	701 335 7312	to	7399	742 192 5210	to	5224
649 100 3989	to	3999	677 466 1088	to	1099	701 369 2005	to	2050	742 222 9200	to	9210
649 647 0370	to	0399	678 071 4500	to	4799	701 499 2260	to	2299	742 228 9660	to	9669
649 647 0522	to	0599	678 096 7531	to	7599	701 503 2247	to	2299	742 247 6980	to	6989
649 647 5237	to	5399	679 909 2578	to	2599	701 541 2271	to	2299	742 290 0936	to	0950
649 647 9100	to	9299	680 112 9565 to 9599			701 553 6557	to	6599	742 302 7600	to	7699
649 666 7800	to	8299	680 244 0903	to	0999	701 578 7460	to	7469	742 305 3711	to	3799
650 114 7707 to 7719			680 412 6046	to	6099	701 578 7475	to	7499	742 305 3800	to	3899
650 130 3400	to	3599	680 761 6800	to	6899	701 601 3457	to	3499	742 305 3900	to	3999
650 213 0406	to	0499	681 677 0540	to	0699	701 605 5913	to	5999	742 305 4000	to	4099
650 555 1749	to	1799	682 070 1029	to	1099	701 695 3982	to	3999	742 305 4100	to	4199
650 564 1900	to	1999	682 956 6280	to	6299	701 695 4148	to	4199	805 885 8411 to 8499		

806 087 1100	to	1499	854 532 0000	to	2999	901 525 7122	to	7199	917 486 4900	to	4999
806 268 9275	to	9299	855 001 6204	to	6249	902 089 1253	to	1299	918 460 0602	to	0699
806 534 3400	to	3477	855 319 9364	to	9399	902 198 9769	to	9799	918 951 7231	to	7299
807 342 3283	to	3399	855 361 3390	to	3399	902 948 1269	to	1299	919 519 2786	to	2799
808 086 7100	to	7199	856 226 0490	to	0499	902 985 0833	to	0899	919 536 0770	to	0799
808 090 3440	to	3499	856 656 5800	to	5999	903 370 6934	to	6999	919 814 3095	to	3199
808 325 5161	to	5699	856 752 0200	to	0299	904 600 6523	to	6599	919 889 5110	to	5134
808 784 8000	to	8299	857 111 1352	to	1399	904 892 0378	to	0399	919 889 5137	to	5176
830 125 0672	to	0699	857 279 3450	to	3499	904 892 0648	to	1299	919 889 5178	to	5199
830 602 5800	to	5999	857 843 4000	to	4099	905 056 2216	to	2299	919 889 5030	to	5070
830 610 3700	to	3799	858 124 7644	to	7699	905 510 6647	to	6799	919 889 5090	to	5099
830 983 3500	to	3599	858 756 3111	to	3299	905 510 6900	to	7099	919 915 2774	to	2787
830 983 3635	to	3699	859 063 8200	to	8699	905 794 0000	to	0199	920 155 4662	to	4687
831 354 1387	to	1399	859 190 0600	to	0644	905 794 0288	to	0299	920 309 9039	to	9199
831 815 8240	to	8299	859 437 5538	to	5599	905 873 6900	to	6999	920 771 5321	to	5399
832 525 3810	to	3899	859 811 2888	to	2899	905 873 7100	to	7299	920 857 5500	to	5899
833 159 1884	to	1899	859 855 8873	to	8999	905 880 8900	to	8999	920 864 3480	to	3499
833 456 2567	to	2599	860 240 8520	to	8599	905 889 7100	to	7199	920 963 4567	to	4599
833 566 3015	to	3071	860 275 3900	to	3999	906 158 1508	to	1599	921 333 7400	to	7499
834 130 5200	to	5299	860 518 9629	to	9699	906 558 8812	to	8899	921 477 3762	to	3799
834 316 5444	to	5499	860 600 0021	to	0999	906 982 2214	to	2299	922 278 1048	to	1399
834 354 8747	to	8766	861 158 2350	to	2599	907 725 8500	to	8599	922 280 2019	to	2099
834 354 8824	to	8838	861 367 5400	to	5499	907 815 0216	to	0257	922 280 2233	to	2299
835 269 5700	to	5799	861 637 6010	to	6099	908 622 4225	to	4235	922 773 0459	to	0499
835 496 7303	to	7399	861 979 7292	to	7499	908 936 9254	to	9299	923 032 7000	to	7399
835 539 5200	to	5999	862 216 6100	to	6199	909 066 4494	to	7499	923 045 3630	to	3699
835 813 3015	to	3099	862 263 9213	to	9299	909 067 7400	to	7499	923 484 3600	to	3699
837 672 8967	to	8999	862 271 0800	to	0999	909 100 1787	to	1799	923 493 9403	to	9599
837 784 3282	to	3299	862 271 5000	to	5099	909 100 1900	to	2099	923 493 9681	to	9699
838 176 8377	to	8399	863 871 5138	to	5199	909 355 0422	to	0499	923 604 4424	to	4499
838 518 1257	to	1299	863 949 5300	to	5399	909 568 8900	to	9099	923 810 7800	to	8299
839 718 8257	to	8299	864 088 8200	to	8299	909 568 9300	to	9499	924 252 1200	to	1299
840 323 0600	to	0699	864 426 3972	to	3999	909 725 7307	to	7399	924 252 1400	to	1499
840 875 6235	to	6299	864 520 6117	to	6136	909 833 0947	to	0999	924 533 0711	to	0799
840 910 0900	to	0999	865 151 0526	to	0599	910 219 8631	to	8699	924 533 2343	to	2399
841 349 5000	to	5099	865 500 4034	to	4099	910 265 1100	to	1199	924 533 2428	to	2499
841 805 7747	to	7899	865 883 6082	to	6099	910 471 7273	to	7299	924 685 1957	to	1999
841 805 7944	to	8099	866 004 3000	to	3999	910 536 2505	to	2599	924 946 6300	to	6699
842 226 0685	to	0695	866 442 4100	to	4899	910 958 7499	to	7599	925 333 5900	to	6099
842 685 4600	to	4699	867 366 9108	to	9118	911 140 1000	to	2199	925 336 2300	to	2399
842 685 4742	to	4999	867 633 7403	to	7499	911 245 2545	to	2599	926 432 5907	to	5999
842 860 0300	to	0399	867 737 5623	to	5699	911 268 9077	to	9099	926 436 3600	to	3699
842 898 5582	to	5599	868 169 4529	to	4599	911 400 8948	to	8999	927 765 6257	to	6299
843 062 7100	to	7199	868 173 8400	to	8599	911 508 1620	to	1799	928 197 8100	to	8199
843 077 6288	to	6299	868 514 9000	to	9099	911 509 9310	to	9399	928 197 8283	to	8299
843 077 6378	to	6399	868 566 9200	to	9299	911 523 3000	to	3999	928 856 2059	to	2068
843 758 5769	to	5778	869 200 0000	to	9999	912 057 9922	to	9999	930 078 5800	to	5899
843 786 2554	to	2699	869 387 1150	to	1199	912 882 0563	to	0899	930 219 1722	to	1799
845 656 8165	to	8199	869 505 3500	to	3599	913 605 2218	to	2299	930 335 7810	to	7819
845 727 2100	to	2199	869 523 7033	to	7099	913 709 2429	to	2499	931 097 9259	to	9299
845 746 2618	to	2635	869 566 6150	to	6167	913 818 3501	to	3999	931 156 1502	to	1579
846 390 7531	to	7599	869 776 8785	to	8786	914 063 4300	to	4399	931 156 1600	to	1625
846 918 0572	to	0599	869 800 0000	to	999 9999	914 346 7621	to	7644	931 156 1671	to	1699
847 237 7690	to	7699	870 054 4814	to	4899	914 453 1366	to	1399	932 506 6400	to	6599
847 284 2481	to	2499	870 491 4812	to	4849	914 529 6185	to	6299	932 732 1796	to	1799
847 374 7055	to	7065	870 536 5820	to	5829	914 896 4658	to	4699	932 827 9026	to	9099
847 374 7055	to	7065	870 541 7167	to	7239	915 187 8774	to	8779	932 957 2300	to	2399
847 636 5304	to	5399	870 575 8155	to	8999	915 300 2783	to	2799	933 060 6160	to	6189
847 700 5447	to	5499	870 589 0485	to	0494	915 546 6822	to	6999	933 387 2541	to	2561
847 723 7500	to	7599	870 691 7060	to	7099	915 646 5183	to	5199	933 760 3609	to	4199
849 485 3427	to	3499	872 028 4850	to	4899	915 671 3963	to	3980	933 894 0928	to	0999
849 520 9850	to	9899	872 029 9306	to	9399	915 671 3982	to	3999	934 018 2729	to	2741
849 608 1357	to	1399	872 078 3709	to	3799	915 675 2217	to	2299	934 180 0300	to	0399
849 792 2600	to	2699	872 100 0445	to	0459	916 440 3377	to	3399	934 236 3954	to	3999
850 546 1862	to	1899	900 556 4178	to	4199	916 670 6352	to	6399	934 622 8717	to	8999
851 143 6826	to	6844	900 845 0044	to	0099	916 682 5300	to	5399	935 216 0312	to	0399
851 209 9880	to	9899	900 936 0217	to	0299	916 694 1414	to	1499	935 843 2202	to	2247
851 928 9221	to	9299	900 936 0435	to	0499	916 703 0802	to	0821	936 024 8889	to	8899
852 589 6560	to	6599	901 058 5255	to	5280	917 089 0709	to	0799	936 339 4455	to	4499
853 049 3646	to	3699	901 273 1082	to	1099	917 089 0842	to	0899			
854 304 4089	to	4999	901 287 5143	to	5199	917 216 2928	to	2999			
854 529 2200	to	2299	901 291 2789	to	2799	917 370 6300	to	6499			

Missing, Lost, or Stolen Canadian Money Order Forms

Do Not Cash — Upon Receipt, Notify Local Postal Inspectors

Provide this listing to all Postal Service™ employees responsible for accepting and cashing postal money orders. Destroy all interim notices when the numbers listed appear in the *Postal Bulletin*. The new money order serial

numbers consist of the first 9 digits. The tenth digit is a check digit only.

Do not cash outdated money orders **104 151 601 to 692 600 000**. Advise holders to send invalid money orders to Canada Post Corporation, Ottawa, Canada K1A 0B1. Check for altered dollar amounts by holding money orders to the light.

719 869 731	to	9 760	728 702 338	to	2 400	734 950 111	to	0 170	742 325 668	to	5 700
720 227 871	to	7 930	728 915 371	to	5 850	735 120 331	to	0 840	742 408 771	to	8 830
720 227 949	to	7 960	728 953 141	to	3 410	735 283 008	to	3 020	742 512 120	to	2 150
720 368 543	to	8 570	728 954 280	to	4 310	735 293 131	to	3 220	742 684 849	to	4 890
720 392 151	to	2 570	729 169 081	to	9 140	735 635 010	to	5 040	742 839 553	to	9 630
720 556 491	to	6 640	729 363 841	to	3 870	735 783 961	to	3 990	742 913 668	to	3 700
720 558 621	to	8 650	729 682 891	to	3 190	735 803 401	to	3 430	742 917 287	to	7 296
720 575 361	to	5 570	729 838 940	to	9 070	736 005 420	to	5 440	742 921 891	to	1 980
720 590 152	to	0 179	729 839 101	to	9 130	736 366 021	to	6 110	742 983 631	to	3 810
721 638 331	to	9 170	730 077 683	to	7 840	736 624 456	to	4 500	743 020 021	to	0 170
721 815 391	to	5 420	730 109 847	to	9 880	736 670 851	to	1 060	743 206 491	to	6 500
721 969 713	to	9 740	730 373 761	to	3 850	736 767 061	to	7 090	743 235 992	to	6 050
722 072 137	to	2 160	730 501 951	to	2 130	736 767 093	to	7 120	743 940 631	to	0 900
722 378 265	to	8 280	730 519 379	to	9 470	736 982 191	to	2 370	743 978 011	to	8 070
722 413 990	to	4 004	730 569 278	to	9 360	736 982 551	to	2 730	744 234 751	to	4 780
722 764 948	to	4 980	730 711 711	to	1 740	737 110 141	to	0 170	744 499 591	to	9 680
722 825 840	to	5 889	730 722 991	to	3 230	737 185 501	to	5 710	744 626 901	to	6 910
723 153 841	to	3 850	730 845 970	to	5 990	737 317 321	to	7 350	745 388 794	to	8 910
723 237 616	to	7 630	730 888 291	to	8 320	737 517 781	to	7 840	746 446 806	to	6 820
723 331 081	to	1 110	730 927 591	to	7 680	737 628 181	to	8 210	746 818 351	to	8 410
723 496 443	to	6 470	731 307 914	to	7 930	737 634 258	to	4 270	747 245 266	to	5 280
723 967 291	to	7 320	731 402 431	to	2 460	738 361 971	to	1 980	747 364 813	to	4 830
724 655 196	to	5 340	731 407 232	to	7 320	738 447 601	to	7 660	747 501 434	to	1 450
724 711 441	to	1 500	731 588 301	to	8 340	738 648 355	to	8 450	747 739 891	to	0 070
724 711 538	to	1 560	731 767 273	to	7 320	738 849 811	to	9 900	748 148 649	to	8 760
724 793 221	to	3 250	731 781 061	to	1 120	738 892 270	to	2 290	748 259 960	to	9 970
724 908 109	to	8 120	731 837 821	to	7 910	738 997 259	to	7 380	748 565 162	to	5 280
724 937 461	to	7 670	731 841 377	to	1 450	739 161 451	to	1 540	748 874 988	to	5 030
725 163 118	to	3 151	732 018 481	to	8 600	739 219 381	to	9 440	749 137 381	to	7 410
725 202 735	to	2 750	732 067 972	to	8 370	739 740 151	to	0 180	749 190 192	to	0 210
725 398 591	to	8 800	732 188 649	to	8 670	739 793 491	to	3 520	749 685 421	to	5 450
725 464 591	to	4 920	732 193 460	to	3 470	739 793 527	to	3 550	749 846 791	to	6 850
725 475 321	to	5 330	732 201 241	to	1 390	739 942 621	to	2 650	749 993 131	to	3 580
725 711 057	to	1 070	732 220 431	to	0 440	739 999 231	to	9 320	750 071 587	to	1 610
725 738 581	to	8 730	732 355 201	to	5 380	740 011 517	to	1 530	750 408 167	to	8 183
725 981 311	to	1 430	732 472 320	to	2 560	740 030 701	to	0 970	750 438 421	to	8 501
725 987 835	to	7 880	732 541 605	to	1 620	740 261 740	to	1 820	750 743 911	to	4 030
726 060 811	to	0 900	732 572 221	to	2 490	740 265 811	to	6 290	750 779 118	to	9 400
726 391 970	to	2 520	732 586 479	to	6 710	740 299 111	to	9 170	750 910 981	to	1 010
726 484 771	to	4 800	732 994 037	to	4 080	740 299 231	to	9 260	750 960 841	to	0 900
726 493 351	to	5 300	733 163 449	to	3 460	740 329 266	to	9 320	751 296 211	to	6 240
726 504 031	to	4 063	733 297 171	to	7 290	740 889 081	to	9 090	751 539 121	to	9 180
726 504 070	to	4 090	733 446 631	to	7 110	741 010 421	to	0 530	751 541 311	to	1 790
726 504 331	to	4 390	733 474 665	to	4 770	741 113 041	to	3 370	751 757 641	to	7 700
726 563 701	to	4 060	733 704 482	to	4 570	741 373 891	to	4 340	751 936 951	to	7 010
726 599 371	to	9 460	733 751 041	to	1 130	741 452 369	to	2 490	751 951 861	to	1 890
726 626 356	to	6 370	734 009 101	to	9 130	741 492 991	to	3 140	751 999 021	to	9 110
727 182 271	to	2 510	734 290 759	to	0 770	741 553 460	to	3 470	752 139 516	to	9 570
727 416 181	to	6 240	734 389 273	to	9 290	741 764 431	to	4 520	752 182 892	to	2 950
727 481 431	to	1 460	734 440 031	to	0 111	741 764 431	to	4 520	752 206 861	to	7 100
727 749 241	to	9 780	734 797 201	to	7 320	742 178 834	to	8 880	752 295 241	to	5 600
728 382 331	to	2 480	734 939 611	to	9 640	742 325 500	to	5 520	752 731 351	to	1 410

752 767 441	to	7 470	762 593 431	to	3 460	773 208 991	to	9 290	800 427 530	to	7 540
753 008 941	to	9 030	763 155 160	to	5 180	773 231 311	to	1 340	800 872 741	to	2 830
753 194 311	to	4 370	763 178 631	to	8 660	773 348 739	to	8 940	801 349 801	to	9 830
753 620 378	to	0 400	763 506 001	to	6 060	773 348 739	to	8 940	801 676 681	to	7 100
754 013 917	to	3 940	763 522 141	to	2 470	773 575 891	to	5 950	802 967 821	to	7 940
754 161 061	to	1 120	763 717 694	to	7 800	773 852 971	to	3 030	803 217 601	to	7 780
754 358 445	to	8 610	763 826 461	to	6 520	775 373 449	to	3 460	803 729 731	to	9 850
754 410 451	to	0 660	763 900 460	to	0 471	789 257 191	to	7 250	803 747 402	to	7 520
754 438 393	to	8 410	763 900 479	to	0 530	790 448 020	to	8 460	804 138 181	to	8 420
754 493 109	to	3 130	763 917 271	to	7 750	790 597 485	to	7 530	804 428 224	to	8 250
754 664 182	to	4 220	764 125 801	to	5 860	790 911 883	to	1 900	804 682 411	to	2 710
754 816 377	to	6 470	764 284 525	to	4 560	791 057 441	to	7 550	805 272 525	to	2 540
755 487 421	to	7 600	764 526 241	to	6 330	791 239 081	to	9 290	805 523 445	to	3 460
755 592 901	to	3 140	764 601 421	to	1 600	791 374 483	to	4 500	805 745 704	to	5 730
755 790 020	to	0 030	764 650 231	to	0 470	791 387 971	to	8 030	806 452 907	to	2 980
755 791 730	to	1 800	764 984 371	to	4 850	791 447 521	to	7 850	806 744 781	to	4 850
755 926 951	to	7 070	765 003 667	to	3 680	791 451 151	to	1 240	806 982 181	to	2 300
755 934 332	to	4 510	765 042 517	to	2 540	791 500 009	to	0 470	807 764 791	to	4 910
755 957 701	to	8 000	765 194 728	to	4 970	791 771 431	to	1 490	808 089 931	to	9 960
755 962 981	to	3 280	765 387 365	to	7 450	792 004 293	to	4 320	808 656 423	to	6 450
756 035 371	to	5 490	765 541 801	to	2 100	792 018 379	to	8 420	808 753 771	to	3 800
756 301 257	to	1 290	765 638 461	to	8 970	792 070 621	to	0 740	809 189 001	to	9 010
756 371 565	to	1 580	765 647 101	to	7 190	792 145 211	to	5 230	809 886 879	to	6 930
756 876 031	to	6 120	765 813 781	to	4 029	792 391 381	to	1 620	809 890 489	to	0 500
756 876 151	to	6 240	765 879 314	to	9 390	792 452 779	to	2 790	810 323 734	to	3 760
756 970 129	to	0 140	765 954 001	to	4 030	792 772 728	to	2 770	810 367 116	to	7 140
757 059 613	to	9 630	766 120 286	to	0 320	792 903 511	to	3 990	810 526 351	to	6 500
757 078 540	to	8 560	766 125 716	to	5 750	793 282 518	to	2 533	810 806 911	to	6 940
757 086 209	to	6 240	766 158 824	to	8 840	794 041 831	to	2 040	810 807 211	to	7 240
757 240 591	to	0 650	766 388 433	to	8 460	794 397 709	to	7 780	811 423 021	to	3 110
757 277 371	to	7 700	766 509 421	to	9 660	794 581 741	to	2 040	811 517 221	to	7 239
757 291 591	to	2 730	766 572 901	to	3 020	794 592 122	to	2 150	811 721 101	to	1 130
757 964 251	to	4 280	766 748 500	to	8 521	795 032 251	to	2 340	812 025 721	to	5 900
758 067 001	to	7 090	767 024 341	to	4 370	795 796 291	to	6 350	812 093 073	to	3 130
758 105 221	to	5 250	767 326 471	to	6 590	796 070 139	to	0 160	812 100 821	to	0 840
758 324 941	to	5 000	767 332 561	to	2 950	796 143 151	to	3 630	812 465 251	to	5 610
758 593 628	to	3 650	768 009 841	to	9 960	796 159 725	to	9 740	812 918 341	to	8 670
758 709 038	to	9 060	768 011 489	to	1 520	796 169 306	to	9 340	812 918 701	to	8 760
758 744 101	to	4 160	768 177 980	to	7 990	796 373 406	to	3 430	813 050 491	to	0 520
758 850 883	to	0 900	768 391 081	to	1 170	796 602 961	to	3 050	813 073 171	to	3 200
758 860 951	to	1 550	768 661 569	to	1 650	796 708 441	to	8 500	813 398 476	to	8 550
759 152 851	to	2 880	769 000 051	to	0 080	796 886 281	to	6 430	813 713 971	to	4 000
759 740 941	to	1 090	769 050 841	to	0 900	796 901 701	to	2 000	813 858 121	to	8 150
760 004 596	to	4 610	769 159 081	to	9 178	796 975 466	to	5 590	814 789 330	to	9 349
760 118 191	to	8 250	769 737 496	to	7 510	797 272 917	to	2 950	814 984 656	to	4 680
760 155 001	to	5 090	769 778 491	to	8 730	797 519 441	to	9 460	815 016 020	to	6 030
760 378 002	to	8 020	769 827 331	to	7 450	797 519 731	to	0 240	815 199 410	to	9 420
760 692 722	to	2 749	770 216 071	to	6 100	797 535 181	to	5 330	815 240 491	to	0 520
761 055 460	to	5 480	770 723 281	to	3 400	797 646 151	to	6 180	815 755 591	to	5 620
761 169 781	to	9 810	770 790 451	to	0 480	798 040 053	to	0 080	815 755 622	to	5 650
761 504 941	to	5 120	770 915 150	to	5 490	798 055 813	to	5 830	815 806 381	to	6 680
761 516 836	to	6 910	771 455 551	to	5 610	798 055 891	to	5 950	816 126 834	to	6 870
761 613 588	to	3 600	771 609 661	to	9 690	798 326 371	to	6 520	816 156 721	to	6 780
761 688 631	to	8 690	771 932 551	to	2 580	798 339 167	to	9 210	816 580 903	to	0 920
761 805 199	to	5 240	772 057 224	to	7 440	798 562 411	to	2 440	816 945 571	to	5 600
761 826 106	to	6 120	772 162 660	to	3 070	798 632 461	to	2 490	817 253 011	to	3 280
761 881 171	to	1 560	772 718 615	to	8 640	798 807 151	to	7 510	817 763 881	to	4 060
761 975 641	to	5 670	772 940 140	to	0 160	798 944 761	to	5 030	818 330 562	to	0 610
761 975 886	to	5 895	772 970 886	to	0 940	799 118 616	to	8 640	818 459 641	to	9 670
762 304 144	to	4 170	773 009 419	to	9 430	799 133 191	to	3 220	818 926 273	to	6 320
762 324 931	to	4 960	773 112 031	to	2 060	799 177 626	to	7 650	818 950 351	to	0 380
762 439 261	to	9 290	773 125 387	to	5 410	799 854 751	to	5 200	818 962 492	to	2 530
762 524 158	to	4 220	773 179 320	to	9 410	800 044 320	to	4 410	819 032 341	to	2 730
762 584 872	to	4 970	773 202 989	to	3 140	800 211 901	to	2 440	819 127 054	to	7 080

819 278 540	to 8 670	822 703 442	to 3 470	826 226 644	to 6 670	828 539 341	to 9 370
819 544 681	to 4 740	822 900 991	to 1 020	826 582 951	to 3 430	828 732 331	to 2 390
819 928 441	to 8 650	822 925 951	to 6 100	826 720 201	to 0 230	828 807 781	to 7 840
820 034 406	to 4 430	823 284 931	to 4 990	827 005 671	to 5 830	828 830 952	to 0 963
820 070 761	to 1 540	823 293 031	to 3 210	827 287 861	to 7 950	828 939 781	to 0 050
820 191 342	to 1 360	823 556 011	to 6 100	827 291 502	to 1 520	829 002 721	to 2 870
820 274 856	to 4 880	824 078 341	to 8 370	827 575 381	to 5 470	829 005 301	to 5 540
820 600 171	to 0 230	824 156 325	to 6 340	827 609 085	to 9 100	829 080 241	to 0 330
821 172 241	to 2 360	824 511 252	to 1 270	827 619 811	to 9 840	829 160 986	to 1 000
821 229 661	to 9 720	824 588 281	to 8 370	827 883 511	to 3 600	829 176 841	to 6 930
821 229 743	to 9 780	825 140 397	to 0 460	828 160 441	to 0 530	829 471 561	to 1 590
821 903 731	to 3 910	825 409 651	to 9 680	828 376 201	to 6 260	829 561 065	to 1 080
821 927 841	to 7 850	825 472 171	to 2 200	828 441 602	to 1 630	829 566 481	to 6 510
822 505 801	to 5 830	826 042 898	to 2 920	828 539 316	to 9 340	829 569 931	to 9 960

— Criminal Investigations Group, U.S. Postal Inspection Service, 12-15-22

Verifying U.S. Postal Service Money Orders

Follow these steps to cash a Postal Service™ money order:

1. Check that the amount does not exceed the legal limit: \$1,000 for domestic, and \$700 for international Postal Service money orders.
2. Check that the proper security features are present:
 - When held to the light, a watermark of Benjamin Franklin is repeated from top to bottom on the left side.
 - When held to the light, a dark line (security thread) runs from top to bottom with the word “USPS” repeated.
 - When there is discoloration around the dollar amounts, this might indicate the amounts were changed.

These appear in Postal Service Notice 299, *U.S. Postal Money Order Reference Card*, or online at usps.com/shop/money-orders.htm.

3. If the money order seems suspicious, call the U.S. Postal Service Money Order Verification System at 866-459-7822.

Provide this information to local banks and retailers, as they also receive Postal Service money orders for cashing.

— *Delivery and Retail Customer Service Operations, 12-15-22*

Counterfeit Canadian Money Order Forms

Do Not Cash

To be posted and used by retail window employees. As directed, destroy previous notices. Destroy all interim notices when the numbers listed appear in the *Postal Bulletin*.

671,819,086	683,594,542	687,262,503
676,612,640	684,683,610	687,262,525
677,891,039	686,619,878	687,262,526
678,282,493	686,619,886	687,287,578
678,916,031	686,619,887	687,287,581
679,552,215	686,794,382	687,287,582
679,694,334	686,794,426	694,063,898
679,751,983	686,794,427	694,063,899
679,800,207	686,794,431	694,063,980
681,130,536	687,262,502	701,321,725
681,844,376		

— *Criminal Investigations Group, U.S. Postal Inspection Service, 12-15-22*

Toll-Free Number Available to Verify Canadian Money Orders

The Canada Post Corporation has a toll-free number that cashing agents can call to verify the validity of Canadian Postal Money Orders. The number is 800-563-0444.

This toll-free number is printed on the back of the Canadian Postal Money Orders.

— *Criminal Investigations Group, U.S. Postal Inspection Service, 12-15-22*

Other Information

Overseas Military/Diplomatic Mail

Mail addressed to military and diplomatic post offices overseas is subject to certain conditions or restrictions of mailing regarding content, preparation, and handling. The APO/FPO/DPO table outlines these conditions by APO/FPO/DPO ZIP Codes™ through the use of footnoted mailing restrictions codes (see the [Restrictions](#) page following the table).

Acceptance clerks must use the table with the Retail System Software terminal to determine which APO/FPO/DPO ZIP Codes are active and which conditions of mailing apply.

APO/FPO/DPO Table

APO/ FPO/ DPO	See Restrictions	APO/ FPO/ DPO	See Restrictions	APO/ FPO/ DPO	See Restrictions	APO/ FPO/ DPO	See Restrictions
09002	A-B-C-C2-F-F3-H-N-R-S-V-Z-Z1	09053	B-C-C2-D-E-F-F3-H-M-R-S-U	09136	B-C-C2-D-E-F-F3-H-M-P-R-S-U	09205	A-B-C-C2-E2-F-F3-M-N-R-S-T-V-X
09003	B-C-C2-D-E-F-F3-H-M-P-R-S-U	09060	B-C-C2-D-E-F1-F3-H-M-N-R-S-U-Z1	09138	B-C-C2-D-F-F3-H-M-R-S-U	09211	B-C-C2-D-E-F-F3-H-M-P-R-S-U
09004	B-C-C2-D-E-F-F3-H-M-R-S-U	09067	B-C-C2-D-E-F-F3-H-M-R-S-U	09140	B-C-C2-D-E-F-F3-H-M-R-S-U	09213	B-C2-F-F1-F3-H-J-L-M-N-R-R1-T-U-V-Z1
09005	B-C-C2-D-E-F-F3-H-M-P-R-S	09068	B-C-C2-D-E-F3-H-R-S-U-Z1	09142	B-C-C2-D-E-F-F3-H-M-R-S-U	09214	B-C-C2-D-E-F3-H-M-R-S-U-Z1
09006	B-C-C2-D-E-F-F3-H-M-R-S-U	09069	A-B-C-C2-D-E-F3-H-N-R-S-U-V	09154	B-C-C2-D-E-F-F3-H-M-R-S-U	09216	B,C,F1,F3,M,N,R,S,V,Z1
09008	A-B-C2-F-F3-H-N-R-S-V-Z-Z1	09079	B-C-C2-D-E-F-F3-H-M-R-S-U	09160	B-C-C2-D-F-F1-F3-H-J-L-M-N-R-R1-T-U-V-Z1	09227	B-C-C2-D-E-F-F3-H-M-R-S-U
09009	B-C-C2-D-E-F-F3-H-M-R-S-U-Z1	09094	B-C-C2-D-F3-H-M-P-R-S-Z1	09170	A-B-C2-F-F1-F3-J-L-M-N-R-R1-S-T-V-X-Z1	09240	A-B-C1-C2-F-F3-H-N-R-S-V
09010	B-C-C2-D-E-F-F3-H-M-R-S-U2	09095	B-C-C2-D-E-F-F3-H-M-R-S-U	09171	A-B-C1-C2-E3-F-F1-F3-J-L-M-N-R-R1-S-T-V-X-Z1	09241	A-B-C-C2-F3-N-R-S-U-Z1
09011	B-C-C2-D-E-F-F3-H-M-R-S	09096	B-C-C2-D-E-F-F3-H-M-R-S-U	09172	B-C-C2-D-E-F-F3-H-M-R-S-U	09242	A-B-C1-C2-F-F3-H-N-R-S-V
09012	B-C-C2-D-E-F-F3-H-M-R-S-U-Z1	09101	A-B-C-C2-F-F3-H-N-Q-R-S-V-Z-Z1	09173	B-C-C2-D-E-F-F3-H-M-R-S-U	09250	B-C-C2-D-E-F-F3-H-M-R-S-U
09013	B-C-C2-D-E-F-F1-F3-H-M-R-S-U-Z1	09103	A-B-C-C2-F-F3-H-N-R-S-V-Z-Z1	09174	B-C-C2-F-F1-F3-L-N-R-R1-S-T-V-X-Z1	09261	B-C-C2-D-E-F3-H-M-N-R-S-U-V-Z1
09014	B-C-C2-D-E-F-F3-H-M-P-R-S-U	09104	B-C-C2-D-F3-H-M-R-S-U-Z1	09175	A-B-C1-C2-E2-F-F1-F3-H1-J-L-M-N-R-R1-S-T-V-W-X-Z1	09263	B-C-C2-D-E-F3-H-M-R-S-U
09015	A-B-C-C1-C2-F-F1-F3-J-L-M-N-R-R1-S-V-Z1	09107	B-C-C2-D-E-F-F3-H-M-R-S-U	09176	A-B-C2-F-F1-F3-J-L-M-N-R-R1-S-T-V-X-Z1	09264	B-C-C2-D-E-F-F3-H-M-R-S-U
09016	B-C-C2-D-E-F-F1-F3-H-M-R-S-U	09112	B-C-C2-D-E-F-F3-H-M-R-S-U	09177	B-C-C2-D-E-F-F3-H-M-R-S-U	09265	B-C-D-F-F1-H-J-L-M-N-R-S-T-U-V-Z1
09017	A-B-C2-F-F3-H-N-R-S-V-Z-Z1	09114	B-C-C2-D-E-F-F3-H-M-R-S-U	09179	B-C1-C2-E2-F1-F3-I3-L-M-N-R-S-T-V-X-Z-Z1	09276	A-B-F-F3-I3-L-M-N-R-S-T-V-X-Z-Z1
09018	A-B-C-C2-F-F3-H-N-R-S-V-Z-Z1	09115	A-B-C2-F-F3-H-N-R-S-V-Z1	09179	A-B-C-C1-C2-F-F1-F3-J-L-M-N-R-R1-S-T-V-X-Z1	09277	A-B-E-E1-E2-F1-F3-I3-L-N-R-S-T-V-X-Z-Z1
09020	B-C-C2-D-E-F-F3-H-M-R-S-U	09116	A-B-C2-F-F3-H-N-R-S-V-Z1	09180	B-C-C2-D-E-F-F3-H-M-R-S-U	09278	A-B-F-F3-I3-L-M-N-R-S-T-V-X-Z-Z1
09021	B-C-C2-D-E-F-F3-H-M-R-S-U-Z1	09123	B-C-C2-D-E-F-F3-H-M-R-S-U-Z1	09186	B-C-C2-D-E-F-F3-H-M-P-R-S-U	09279	A-B-E-E1-F-F3-I3-L-M-N-R-S-T-V-X-Z-Z1
09034	B-C-C2-D-E-F-F3-H-M-R-S-U	09126	B-C-C2-F3-H-M-P-R-S-Z1	09203	A-B-C-C1-C2-F-F1-F3-I3-J-L-M-N-R-R1-T-V-Z-Z1	09280	A-B-C-C1-C2-E-E2-F1-F3-H-I3-L-M-N-R-S-T-V-W-X-Z-Z1
09044	B-C-C2-D-F-F3-H-R-S-U	09128	B-C-C2-D-E-F-F3-H-M-R-S-U	09204	B-C-F3-M-N-R-S-V-Z1	09281	A-B-C1-C2-E2-E3-F-F1-F3-H-H1-J-L-M-N-R-R1-S-T-V-X-Z1
09046	B-C-C2-D-E-F-F3-H-M-R-S-U	09131	B-C-C2-D-E-F-F3-H-M-R-S-U				
09049	B-C-C2-D-E-F-F3-H-M-R-S-U	09135	A-B-C2-F-F3-H-N-R-S-U-V-Z1				

APO/ FPO/ DPO	See Restrictions	APO/ FPO/ DPO	See Restrictions	APO/ FPO/ DPO	See Restrictions	APO/ FPO/ DPO	See Restrictions
09282	A-B-C1-C2-E2-E3-F-F1-F3-H-H1-J-L-M-N-R-R1-S-T-V-X-Z1	09316	A-B-C1-E2-F-F1-F3-H1-I3-M-N-R-R1-S-T-V-Z1	09490	A-B-C1-C2-E2-F-F1-F3-H1-J-L-M-N-R-R1-S-T-V-X-Z1	09564	B-C-C2-F-F1-F3-R-R1-S-V
09283	A-B-E-E1-F-F3-L-M-N-R-S-T-V-X-Z1	09321	A-B-C1-C2-E2-F-F3-H1-M-N-R-R1-S-V-Z1	09491	A-B-C1-C2-E2-F1-F3-H1-J-L-M-N-R-R1-S-T-V-Z1	09565	B-C-C2-F-F1-F3-R-R1-S-V
09284	A-B-C-C2-F-F3-I3-L-M-N-R-S-T-V-X-Z1	09330	A-B-C1-C2-D-E-E2-F-F1-F3-H-H1-M-R-R1-S-V-Z1	09494	B-C-C1-C2-F3-M-R-S-U-Z1	09566	B-C-C2-E2-E3-F-F1-F3-R-R1-S-V
09285	A-B-C-E-E-1-F1-F3-H-I3-L-M-N-R-S-T-V-X-Z1	09333	A-B-C-C1-C2-E2-F-F1-F3-H1-I3-M-N-R-R1-S-V-V1-Z1	09498	B-C1-C2-F-F1-F3-J-L-N-R-R1-T-V-Z1	09567	B-C-C2-E2-E3-F-F1-F3-R-R1-S-V
09287	B-C2-E1-F1-F3-J-L-N-R-S-T-V-X-Z1	09343	A-B-C1-C2-F-F3-M-N-R-R1-S-V-Z1	09501	B-V	09568	B-C-C2-F-F1-F3-R-R1-S-V
09288	A-B-C-C1-C2-E2-F1-F3-H-H1-J-L-M-N-R-R1-S-T-V-X-Z1	09348	A-B-C1-E2-F-F1-F3-H1-I3-M-N-R-R1-S-T-V-Z1	09502	B-V	09569	B-C-C2-E2-E3-F-F1-F3-R-R1-S-V-Z1
09289	B-E2-F1-F3-H1-J-L-M-N-R-R1-S-T-U2-V-X-Z1	09357	A-B-C1-E2-F-F3-H1-M-R-V-Z1	09503	B-F-F1-R-R1-V	09570	B-C-C2-F-F1-F3-R-R1-S-V
09290	A-B-F1-F3-J-L-M-N-R-S-T-U2-V-X-Z1	09365	A-B-C-C1-E2-F-F3-H1-M-N-R-V-Z1	09504	B-V	09573	B-C-C2-E2-E3-F-F1-F3-R-R1-S-V-Z1
09291	B-C-C1-C2-E2-F1-F3-H1-L-N-R-R1-S-T-V-X-Z1	09366	A-B-C-C1-E2-F-F1-F3-H-H1-M-R-R1-S-V-Z1	09505	B-V	09574	B-F-F1-R-R1-V
09292	A-B-C-C2-E-E2-E3-F1-F3-H-H1-J-L-M-N-R-R1-S-T-V-X-Z1	09401	B-C-C1-C2-F3-M-R-S-U-Z1	09506	B-V	09575	B-C-C2-F-F1-F3-R-R1-S-V
09293	A-B-C-C1-C2-E-E2-F1-F3-I3-L-M-N-R-S-T-V-X-Z1	09403	B-C-C1-C2-F3-M-R-S-U-Z1	09507	B-V	09576	B-C-C2-F-F1-F3-R-R1-S-V
09294	B-C-C1-C2-E2-F1-F3-H1-L-N-R-R1-S-T-V-X-Z1	09410	C-C2-F-F1-F3-N-R-S-U2	09508	B-C-C2-F-F3-R-R1-S-V	09577	B-C-C2-F-F1-F3-R-R1-S-V
09295	B-C-C1-C2-E2-F1-F3-H1-J-L-M-N-R-R1-S-T-V-X-Z1	09421	B-C-C1-C2-F3-M-R-S-U-Z1	09509	B-C-C2-F-F3-R-R1-S-V	09578	B-C-C2-F-F1-F3-R-R1-S-V
09301	A-B-C1-C2-E2-F-F1-F3-H1-I3-L-M-N-R-R1-S-T-U4-V-Z1	09447	B-C-C1-C2-F3-M-R-S-U-V-Z1	09510	B-C-C2-F-F3-R-R1-S-V	09579	B-C-C2-F-F1-F3-R-R1-S-V
09304	A-C-C1-C2-F-F1-F3-H-M-N-R-S-V-Z1	09454	B-C-C1-C2-F3-M-R-S-U-V-Z1	09511	B-C-C2-F-F3-R-R1-S-V	09581	B-C-C2-F-F1-F3-R-R1-S-V
09305	A-B-C1-E2-F-F1-F3-H1-I3-M-N-R-R1-S-T-V-Z1	09456	B-C-C1-C2-F3-M-N-R-S-U-V-Z1	09512	B-C-C2-F-F1-F3-R-R1-S-V	09582	B-C-C2-F-F1-F3-R-R1-S-V
09306	A-B-C1-E2-F-F1-F3-H1-R-R1-S-U2-V-Z1	09459	B-C-C1-C2-F3-M-R-S-U-Z1	09513	B-C-C2-F-F1-F3-R-R1-S-V	09583	B-C-C2-F-F1-F3-R-R1-S-V
09307	B-C-C2-F-F3-N-R-R1-S-Z1	09461	B-C-C1-C2-F3-M-P-R-S-U-Z1	09514	B-C-C2-F-F1-F3-R-R1-V	09584	B-C-C2-F-F1-F3-R-R1-S-V
09309	A-B-C-C1-C2-E2-F-F1-F3-H1-M-N-R-R1-S-V-Z1	09463	B-C-C1-C2-F3-M-R-S-U-Z1	09516	B-C-C2-F-F3-R-R1-S-F1	09585	B-C-C2-F-F1-F3-R-R1-S-V
09310	A-B-C1-C2-E2-F-F1-F3-H1-I3-L-M-N-R-R1-S-T-U4-V-Z1	09464	B-C-C1-C2-F3-R-S-U-Z1	09517	B-C-C2-F-F1-F3-R-R1-S-V	09586	B-C-C2-F-F1-F3-R-R1-S-V
09311	A-B-C1-C2-E2-F-F1-F3-H1-I3-L-M-N-R-R1-S-T-U4-V-Z1	09467	B-E-E1-F-F3-J-L-M-N-R-S-T-V-X-Z1	09520	B-F-F1-F3-R-R1-S-V	09587	B-C-C2-F-F1-F3-R-R1-S-V
09312	A-B-C1-C2-E2-F-F1-F3-H1-I3-L-M-N-R-R1-S-T-U-U4-V-Z1	09468	B-C-C1-C2-F3-M-R-S-U-Z1	09522	B-F-F1-F3-R-S-V	09588	B-C-C2-F-F1-F3-R-R1-S-V
09315	A-B-C1-E2-F-F3-N-R-R1-S-V-Z1	09469	B-C-C1-C2-F3-R-S-U-Z1	09523	B-C-C2-F-F1-F3-R-R1-S-V	09589	B-F-F1-F3-R-S-V
		09470	B-C-C1-C2-F3-M-R-S-U-Z1	09524	B-C-C2-F-F1-F3-R-R1-S-V	09590	B-C-C2-F-F1-F3-R-R1-S-V
		09487	A-B-C-C1-C2-E2-F1-F3-I3-L-M-N-R-R1-S-T-V-W-X-Z1	09532	B-C-C2-F-F1-F3-R-R1-S-V	09591	B-C-C2-F-F1-F3-R-R1-S-V
		09488	A-B-C-C1-C2-E2-F3-J-L-M-N-S-T-V-W-X-Z1	09533	B-V	09592	B-C-C2-F-F1-F3-R-R1-S-V
		09489	A-B-C-C1-C2-E2-F1-F3-L-M-N-R-R1-S-T-V-W-X-Z1	09534	B-F-F1-F3-R-R1-S-V	09593	B-F-F1-F3-R-S-V
				09541	A-B-C-F-F3-M-N-S-V-Z1	09594	B-C-C1-C2-F-F1-F3-R-R1-S-V
				09542	A-B-C-F-F3-M-N-S-V-Z1	09595	B-C-C2-F-F1-F3-I3-J-R-R1-S-V-V1-Z1
				09543	A-B-C-F-F3-M-N-S-V-Z1	09596	B-F-F1-R-R1-V
				09544	A-B-C-F-F3-M-N-S-V-Z1	09599	B-F-F1-R-R1-V
				09545	A-B-C-F-F3-M-N-S-V-Z1	09600	B-C-C2-F-F1-F3-R-S-U-Z1
				09550	B-C-C2-F-F1-F3-R-R1-S-V	09602	B-C-C2-F-F1-F3-N-R-S-U-V
				09554	B-C-C2-F-F1-F3-R-R1-S-V	09603	B-C-C2-F-F1-F3-R-S-U-V-Z1
				09555	B-C-C2-F-F1-F3-R-R1-S-V		
				09556	B-F-F1-R-R1-V		

APO/ FPO/ DPO	See Restrictions	APO/ FPO/ DPO	See Restrictions	APO/ FPO/ DPO	See Restrictions	APO/ FPO/ DPO	See Restrictions
09604	B-C-C2-F-F1-F3-P-R-S-U-V-Z1	09708	B-C-C1-C2-F-F3-M-R-R1-S-U	09741	A-B-C1-C2-E2-F-F1-F3-H1-J-L-M-N-R-R1-T-V-W-Y-Z1	09810	A-B-C2-F-F1-F3-N-R-S-V-Z1
09605	B-C-C2-D-F-F3-H-M-R-S-U-V	09709	B-C1-C2-E2-F-F1-F3-H1-J-L-N-R-R1-T-V-Z1	09742	A-B-C2-F-F1-F3-J-L-M-N-R-S-T-V-Z1	09811	A-B-C-C2-E-E2-E3-F1-F3-H-H1-J-M-N-R-R1-S-U-V-Z1
09606	B-C-C2-D-F-F3-H-M-R-S-U-V	09710	B-C-C1-F-F1-J-L-M-N-R-R1-T-U-V-Z1	09743	A-B-C-C2-F-F3-H-N-R-S-V-Z1	09812	B-E2-E3-F-F1-I-J-L-N-R-T-U-V-Z1
09608	B-C-F-F3-N-R-S-U-V-Z1	09711	A-B-C-C2-E2-F-F1-F3-M-N-R-S-T-V-X	09744	A-B-C1-C2-F-F1-F3-J-L-M-N-R-R1-T-V-Z1	09813	A-B-C1-C2-E2-E3-F-F1-F3-J-L-N-R-R1-T-V-Z1
09609	B-C-C2-F-F3-N-R-S-U-V-Z1	09712	A-B-C2-F-F3-H-R-S-U-V-Z1	09745	A-B-C2-F-F1-F3-M-N-R-R1-S-V-Z1	09814	B-C2-E2-E3-F-F1-F3-I3-J-L-N-R-R1-T-V-Z1
09610	B-C-C2-F-F1-F3-M-R-S-U-V-Z1	09714	B-C-C1-C2-F-F3-M-R-R1-S-U	09748	A-B-C1-C2-F-F1-F3-J-L-M-N-R-R1-T-V-Z1	09815	A-B-C-C2-E-E2-E3-F1-F3-H-H1-J-M-N-R-R1-S-U-V-Z1
09613	B-C-C2-F-F3-N-R-S-U-V	09715	B-F-F1-J-L-M-N-R-T-V-Z1	09749	A-B-C2-F-F3-H-N-R-S-U-V-Z1	09816	A-B-C1-C2-E2-E3-F-F1-F3-J-L-N-R-R1-T-V-Z1
09614	A-B-C1-C2-E2-F-F1-F3-H1-J-L-M-N-R-R1-T-V-W-Z1	09716	B-C-C2-F-F1-F3-J-L-M-N-R-R1-T-V-Z1	09750	A-B-C1-C2-F-F1-F3-J-L-M-N-R-R1-T-V-Z1	09817	A-B-C1-C2-E2-E3-F-F1-F3-H-H1-J-L-M-N-R-R1-T-V-Z1
09618	B-C-C2-F-F3-R-S-U-Z1	09717	A-B-C-C2-F3-M-R-S-V-W-Z1	09751	B-C-C2-D-E-F-F3-H-M-R-S-U	09818	A-B-C-C2-F-F3-M-R-S-V-Z1
09620	B-C-C2-F-F3-R-S-U-V-Z1	09718	B-F-F1-J-L-M-N-R-T-U-V-Z1	09752	B-C-C2-D-F-F3-H-R-S-U	09819	A-B-C-C1-C2-E2-F-F1-F3-H-H1-M-R-R1-S-V-Z1
09621	B-C-F-F3-R-U-Z1	09719	B-C-C2-D-F3-M-R-S-U-V-Z1	09753	A-B-C-C1-C2-D-E-F1-F3-H-M-N-R-S-V-W-Z1	09820	A-B-C2-F-F1-F3-H-H1-J-L-M-N-R-R1-T-V-Z1
09622	B-C-C2-F-F3-R-S-U-Z1	09720	B-C2-F3-M-R-S-U-V-Z1	09754	A-B-C-C2-F-F3-H-N-R-S-V-Z1	09821	A-B-C-C2-F-F3-N-R-S-V-Z1
09623	B-C-C2-F-F3-R-S-U-V-Z1	09722	A-B-C-C2-F-F3-H-N-R-S-V-Z1	09755	A-B-C-C1-C2-D-F-F1-F3-J-L-M-N-Q-R-R1-S-T-V-Z1	09822	A-B-C-C2-F-F3-M-R-S-V-Z1
09624	B-C-C2-F-F1-F3-I3-L-N-R-R1-T-U-V-Z1	09723	B-C2-F-F1-F3-J-L-M-N-R-R1-T-V-Z1	09759	A-B-C-C1-C2-E2-F-F1-F3-J-L-N-R-R1-T-V-Z1	09823	A-B-C1-C2-F-F1-F3-J-L-M-N-R-R1-T-V-Z1
09625	B-C-C2-F-F3-N-R-S-U-Z1	09724	B-C-C1-C2-F-F3-M-R-R1-S-U	09761	B-C2-F-F1-F3-M-R-R1-S-V-Z1	09824	A-B-C-C2-F-F3-M-R-S-V-Z1
09627	B-C-C2-F-F3-R-S-U-V-Z1	09725	A-B-C2-F-F3-H-N-Q-R-S-V1-Z1	09762	A-B-C2-E3-F-F1-F3-J-L-N-R-R1-T-V-Z1	09825	A-B-C1-C2-F-F1-F3-J-L-M-N-R-R1-T-V-Z1
09630	B-C-C2-F-F3-R-S-U-V	09726	B-F-F1-J-L-M-N-R-T-U-V-Z1	09769	A-B-C-C1-C2-F-F1-F3-J-L-M-N-R-R1-T-V-Z1	09826	A-B-C1-C2-E1-E2-E3-F1-F3-J-L-M-N-R-R1-T-V-W-Z1
09633	B-C-C2-D-F-F3-M-R-S-U-U1-U2-U3-V-Z1	09727	A-B-C1-C2-F-F1-F3-J-L-M-N-R-R1-T-V-Z1	09777	A-B-C-C1-C2-E1-F-F1-F3-J-L-M-N-R-R1-T-V-Z1	09827	A-B-F-F1-J-L-M-N-R-T-V-Z1
09634	A-B-C2-F-F3-M-N-R-S-V	09728	A-B-C-C1-C2-F-F1-F3-J-L-N-R-R1-T-V-Z1	09780	A-B-C2-F-F3-H-N-R-S-V	09828	A-B-C1-C2-F-F1-F3-I3-L-N-R-R1-T-V-Z1
09636	B-C-C2-F-F3-R-S-U-V-Z1	09729	B-C-C2-F-F3-N-R-R1-S-U-V-Z1	09801	A-B-C1-E2-F-F3-H1-M-N-R-R1-S-V-Z1	09829	B-C-N-R-V-Z1
09642	B-C2-F-F1-F3-J-L-M-N-R-T-U-V	09730	A-B-C1-C2-F-F1-F3-J-L-M-N-R-R1-T-V-Z1	09802	A-B-C-C2-D-F-F1-F3-H1-I3-L-M-N-R-R1-S-T-V-W-Z1	09830	B-C-F-F1-F3-J-L-M-N-R-R1-S-T-V-Z1
09643	B-C-C2-F3-M-R-S-U-V-Z1	09731	A-B-C1-C2-F-F1-F3-J-L-M-N-R-R1-T-V-Z1	09803	A-B-C-C2-E-E2-E3-F1-F3-H-H1-J-M-N-R-R1-S-U-V-Z1	09831	B-C1-C2-F-F1-F3-J-L-N-R-R1-T-V-Z1
09645	B-C-C1-E1-E2-F-F1-F3-M-R-S-U-X-Z1	09732	B-F-F3-N-S-V-Z1	09804	A-B-C-C2-F-F1-F3-M-N-R-S-V-Z1	09832	A-B-C-C1-C2-E2-E3-F1-F3-H-H1-J-M-N-R-R1-S-V-Z1
09647	B-C2-F1-F3-M-N-R-S-U-Z1	09733	B-F-F3-N-R-S-V-Z	09805	B-C-C2-E2-E3-F-F1-F3-R-R1-S-Z1	09834	B-C-C2-E2-E3-F-F1-F3-R-R1-S-U-Z1
09648	B-C2-F3-N-R-S-U-V-Z1	09734	A-B-C-C1-C2-F-F1-F3-I3-J-L-M-N-R-R1-T-V-Z1	09807	A-B-C1-C2-E2-F-F1-F3-H1-I3-M-N-R-R1-S-T-V-Z1	09836	A-B-C1-C2-F-F1-F3-J-L-M-N-R-R1-V-Z1
09649	B-C2-F3-N-R-S-U-Z1	09735	B-F3-N-R-S-V-Z1	09808	A-B-C1-C2-E2-F-F1-F3-H-H1-J-L-N-R-R1-T-V-Z1	09837	B-E2-E3-F1-F3-R-S-V-Z1
09701	A-B-C1-C2-F-F1-F3-J-L-M-N-R-R1-T-V-Z1	09736	A-B-C1-F-F1-F3-J-L-M-N-R-R1-T-V-Z1	09809	B-C1-C2-E3-F-F1-F3-J-L-N-T-V-Z1	09838	B-C-C2-E2-E3-F-F1-F3-R-S-U-Z1
09702	B-C-C2-F-F1-M-R-R1-S-U	09737	A-B-C1-C2-F-F1-F3-I3-J-L-M-N-R-R1-T-V-W-Y-Z1			09842	A-B-C1-C2-F-F1-F3-J-L-N-R-R1-T-V-Z1
09704	B-C-F-F1-F3-R-R1-S-U2-V	09738	A-B-C1-C2-F-F1-F3-J-L-M-N-R-R1-T-V-Z1				
09705	B-C-C1-C2-F1-F3-M-R-R1-S-U	09739	A-B-C1-C2-F-F1-F3-J-L-M-N-R-R1-T-V-Z1				
09706	B-C-C2-F3-M-N-R-S-U-V-Z1						
09707	B-C2-F-F1-F3-J-L-M-N-R-R1-T-V-Z1						

APO/ FPO/ DPO	See Restrictions	APO/ FPO/ DPO	See Restrictions	APO/ FPO/ DPO	See Restrictions	APO/ FPO/ DPO	See Restrictions
09844	A-B-C1-C2-F-F1-F3-J-L-M-N-R-R1-T-V-Z1	09902	A-B-C1-C2-E2-F-F3-H1-M-R-R1-S-V-Z1	34032	B-C1-C2-F-F1-F3-J-L-M-N-R-R1-T-V-Z1	34091	B-C-C2-E2-E3-F-F1-F3-R-R1-S-V-Z1
09845	A-B-C1-C2-E3-F-F1-F3-J-L-M-N-R-R1-T-V-Z1	09903	B-C1-E2-F1-F3-S-V-Z1	34033	B-C1-C2-F-F1-F3-I3-L-M-N-R-T-V-Z1	34092	B-C-C2-F-F1-F3-R-R1-S-V-Z1
09846	A-B-C1-C2-F-F1-F3-J-L-N-R-R1-T-V-Z1	09904	B-C1-E2-F1-F3-S-V-Z1	34034	B-C1-C2-F-F1-F3-I3-L-M-N-R-R1-T-V-Z1	34093	B-C-C2-F-F1-F3-R-R1-S-V
09847	B-C-C2-F-F1-F3-J-L-M-N-R-R1-S-T-V-Z1	09908	A-B-C2-F-F1-F3-N-R-R1-S-V-Z1	34035	B-C1-C2-F-F1-F3-H-J-L-M-N-R-R1-T-V-Z1	34094	B-F-F1-F3-R-R1-S-V
09848	A-B-C2-F-F3-M-R-S-V-Z1	09909	A-B-C2-F-F1-F3-N-R-R1-S-V-V1-Z1	34036	B-C1-C2-F-F1-F3-J-L-M-N-R-R1-T-V-Z1	34095	B-F-F1-R-R1-V
09853	B-C1-C2-E2-F-F1-F3-H1-N-R-R1-S-U2-V-Z1	09974	B-F1-F3-J-L-M-N-R-S-T-U2-V-X-Z1	34037	B-C-C1-C2-F-F1-F3-H-J-L-M-N-R-R1-T-V-Z1	96201	A-B-F-F1-F3-M-R-S-U
09854	A-B-C1-C2-F-F1-F3-J-L-N-R-R1-S-T-V-Z1	09975	B-F1-F3-I3-L-M-N-R-S-T-U2-V-X-Z1	34039	B-C1-C2-F-F1-J-L-M-N-T-V-Z1	96202	A-B-C2-F-F1-F3-M-R-S-U
09855	A-B-C-C1-C2-E2-F-F1-F3-H1-M-R-R1-S-U2-V-Z1	09976	B-F1-F3-J-L-M-N-R-S-T-U2-V-X-Z1	34041	B-C1-C2-F-F1-F3-J-L-M-N-R-R1-T-V-Z1	96203	A-B-F-F1-F3-M-R-S-U
09857	A-B-C2-E2-F-F1-F3-13-L-M-N-R-R1-S-T-V-Z1	09977	B-F1-F3-J-L-M-N-R-S-T-U2-V-X-Z1	34042	A-B-C-F-F1-F3-M-N-R-S-U-V-W-Z1	96204	A-B-F-F1-F3-M-R-S-U
09858	A-B-C-C1-C2-E2-E3-F1-F3-H-H1-J-M-N-R-R1-S-U-V-Z1	09978	B-C-C2-D-E1-F-F1-F3-H-H1-M-N-R-R1-S-T-X-Z1	34050	B-V	96205	A-B-C-C2-F-F1-F3-M-R-S-U
09859	B-C-C1-C2-E2-E3-F-F1-F3-H1-R-R1-S-U-Z1	09980	B-C-C1-C2-F1-F3-J-L-M-N-R-R1-S-T-V-X-Z1	34051	B-V	96206	A-B-C-C2-F-F1-F3-M-R-S-U
09860	A-B-C2-F-F1-F3-J-L-M-N-R-R1-S-T-V-Z1	09981	B-C-C1-C2-F1-F3-J-L-M-N-R-R1-S-T-V-X-Z1	34052	B-V	96207	A-B-F-F1-F3-M-R-S-U-V
09862	A-B-C-C2-F-F1-F3-I3-L-M-N-R-R1-S-T-V-X-Z1	09982	B-C-C1-C2-F1-F3-J-L-M-N-R-R1-S-T-V-X-Z1	34053	B-V	96208	A-B-F-F1-F3-M-R-S-U
09864	A-B-C-C1-C2-E2-F1-F3-L-M-N-R-R1-S-T-V-W-Z1	09983	B-C-C1-C2-F1-F3-J-L-M-N-R-R1-S-T-V-X-Z1	34054	B-V	96209	A-B-C1-C2-F-F1-J-L-M-N-T-U-V-Z1
09867	A-B-C-C1-C2-E2-F1-F3-L-M-N-R-R1-S-T-V-W-Z1	09984	B-C-C1-C2-F1-F3-J-L-M-N-R-R1-S-T-V-X-Z1	34055	B-C1-C2-F-F1-F3-J-L-M-N-R-R1-T-V-Z1	96210	A-B-C1-C2-F-F1-F3-I3-L-M-N-R-R1-T-V-Z1
09869	A-B-C1-C2-E2-F1-F3-L-M-N-R-R1-S-T-V-W-Z1	34001	A-B-C1-C2-F-F1-F3-J-L-M-N-R-R1-S-T-V-Z1	34058	B-C2-F-F1-F2-F3-R-R1-S-V-Z1	96212	B-F-F1-F2-H-M-W-Z1
09870	A-B-C1-C2-E2-F-F1-F3-H1-I3-L-M-N-R-R1-S-T-U4-V-Z1	34002	B-C1-C2-F-F1-F3-J-L-M-N-R-R1-T-V-Z1	34060	B-C1-C2-E2-F-F1-F3-J-L-M-N-R-R1-T-V-Z1	96213	A-B-C-C2-F1-F3-N-R-S
09873	A-B-C1-C2-E2-F-F1-F3-H1-I3-L-M-N-R-R1-S-T-U-U4-V-Z1	34004	B-C1-C2-F-F1-F3-J-L-M-N-R-R1-T-V-Z1	34066	B-C1-C2-F-F1-F3-I3-J-L-M-N-R-R1-S-T-V-X-Z1	96214	A-B-C-C2-F1-F3-R-S-U
09874	A-B-C1-C2-E2-F-F1-F3-H1-I3-L-M-N-R-R1-S-T-U-U4-V-Z1	34007	B-F-F1-H-J-M-N-R-R1-V-Z1	34067	B-C1-C2-F-F1-F3-J-L-M-N-R-R1-S-T-V-X-Z1	96218	A-B-F-F1-F3-M-R-S-U
09875	A-B-C1-C2-E2-F-F1-F3-H1-I3-L-M-N-R-R1-S-T-U-U4-V-Z1	34008	B-C1-C2-D-E1-F-F1-H-H1-J-L-M-N-R-R1-T-V-Z1	34068	B-C1-C2-F-F1-F3-J-L-M-N-R-R1-S-T-V-X-Z1	96224	A-B-F-F1-F3-M-R-S-U
09877	A-B-C-C2-E-E2-E3-F1-F3-H-H1-J-M-N-R-R1-S-U-V-Z1	34009	B-C2-F-F1-F3-R-S-V	34069	B-C1-C2-F-F1-F3-I3-J-L-M-N-R-R1-S-T-V-X-Z1	96251	A-B-F-F1-F3-M-R-S-U
09880	A-B-C1-C2-E2-F-F1-F3-H1-J-L-N-R-R1-S-T-U-V-Z1	34010	B-C2-F-F1-F3-R-S-V	34072	B-C-C2-F1-F3-J-L-M-N-R-S-T-V-X-Z1	96257	A-B-F-F1-F3-S-U
09890	B-E2-F-H1-N-R-R1-U2-V-Z1	34011	B-C1-C2-E2-F-F1-F3-J-L-M-N-R-R1-T-V-Z1	34078	B-F1-F3-N-R-S-V-Z1	96258	A-F-F3-M-P-R-S-U
09892	A-B-C1-C2-E2-F-F1-F3-J-L-M-N-R-R1-T-V-Z1	34020	B-C1-C2-F-F1-F3-J-L-M-N-R-R1-T-V-Z1	34080	B-F-F1-R-R1-V	96260	A-B-F-F1-F3-M-R-S-U
09895	A-B-C1-C2-E2-F-F1-F3-J-L-M-N-R-T-V-W-Z1	34021	B-C1-C2-F-F1-F3-J-L-M-N-R-R1-T-V-Z1	34081	B-F-F1-R-R1-V	96262	A-B-C2-F-F1-F3-R-S-U-V-Z1
09898	B-C-C1-C2-E2-F-F1-F2-H1-N-R-R1-S-U2-V-Z1	34022	B-C1-C2-F-F1-F3-J-L-M-N-R-R1-T-V-Z1	34082	B-F-F1-R-R1-V	96264	A-B-C-C2-F1-F3-R-S-U
		34023	B-C1-C2-F-F1-F3-J-L-M-N-R-R1-T-V-Z1	34083	B-F-F1-R-R1-V	96266	A-B-C-C2-F1-F3-R-S-U
		34024	B-C1-C2-F-F1-F3-J-L-M-N-R-R1-T-V-Z1	34084	B-F-F1-R-R1-V	96269	A-B-C-C2-F1-F2-F3-R-S-U-Z1
		34025	B-F-F1-F3-J-L-M-N-R-R1-T-V-Z1	34085	B-C-C1-C2-E2-E3-F-F1-F3-H1-J-R-R1-S-T-V-V1	96271	A-F-F3-M-P-R-S-U
		34030	B-C1-C2-F-F1-F3-J-L-M-N-R-R1-T-V-Z1	34086	B-C-C1-C2-E2-E3-F-F1-F3-H1-J-R-R1-S-T-V-V1	96273	A-B-C2-F-F1-F3-M-R-S-U
		34031	B-C1-C2-F-F1-F3-J-L-M-N-R-R1-T-V-Z1	34087	B-C-C2-E2-F-F1-F3-R-R1-S-V	96275	A-B-F-F1-F3-M-R-S-U
				34088	B-C-C2-F-F1-F3-R-R1-S-V	96276	A-B-C-C2-F1-F3-R-S
				34089	B-C-C2-F-F1-F3-R-R1-S-V	96278	A-B-C-C2-F1-F3-R-S-U
				34090	B-C-C2-F-F1-F3-R-R1-S-V	96283	A-B-F-F1-F3-S-U
						96284	A-B-C2-F-F1-F3-M-R-S-U
						96297	A-B-F-F1-F3-R-S-U
						96300	A-B-F3-M-R-S-V-Z1
						96301	A-B-C-C2-F-F3-M-N-R-S-U2-W
						96303	B-C1-C2-F-F1-H-J-L-M-N-T-V-W-Z1
						96306	B-F-F1-F2-F3-H-M-R-S-W-Z1

APO/ FPO/ DPO	See Restrictions	APO/ FPO/ DPO	See Restrictions	APO/ FPO/ DPO	See Restrictions	APO/ FPO/ DPO	See Restrictions
96309	B-C-C2-F-F1-F3-M-N-R-S-V-W	96388	B-F3-M-R-S-W	96562	A-B-C1-C2-D-E2-E3-F-F1-H-H1-I3-L-M-N-R-R1-S-T-V-Z-Z1	96662	B-C-C2-F-F1-F3-R-R1-S-V
96310	B-F3-M-R-S-W	96389	B-M-W			96663	B-C-C2-F-F1-F3-R-R1-S-V
96311	B-F3-M-R-S-W	96401	B-C-F-F3-N-R-S-V-V1-Z1	96577	A-B-C2-F-F3-H-M-N-R-S-U	96664	B-C-C2-F-F1-F3-R-R1-S-V
96315	B-F-F1-F3-H-M-R-S-W	96502	A-C-C1-C2-F-F1-F3-J-M-N-R-R1-S-T-U-V	96578	B-F1-F3-H-J-N-R-S	96665	B-C-C2-F-F1-F3-R-R1-S-V
96319	B-C-C2-F3-M-R-S-W	96504	A-B-C-C1-C2-F-F1-F3-I3-L-M-N-R-R1-T-V-W-Z-Z1	96595	B-F-F3-R-S-V-Z1	96666	B-C-C2-F-F1-F3-R-R1-S-V
96321	B-F-F1-F2-F3-H-M-R-S-W-Z1	96505	A-B-C-C1-C2-F-F1-F3-I3-L-M-N-R-R1-S-T-V-W-Z-Z1	96598	B-C2-F3-I3-N-R-S-V-V1	96667	B-C-C2-F-F1-F3-R-R1-S-V
96322	B-F-F1-F2-F3-H-M-R-S-W-Z1	96507	A-B-C1-C2-F-F1-H-J-L-M-N-T-V-Z1	96599	B-C2-F3-N-R-S-V	96668	B-C-C2-F-F1-F3-R-R1-S-V
96326	B-C-C2-F-F3-M-R-S-W	96510	B-I3-N-V	96601	B-V	96669	B-C-C2-F-F1-F3-R-R1-S-V
96328	B-C-C2-F3-M-R-S-W	96511	B-I3-N-V	96602	B-V	96670	B-C-C2-F-F1-F3-R-R1-S-V
96331	A-B-C-C2-F-F1-F3-J-L-M-N-R-S-U2-W	96515	B-C-D-E1-F-F1-F3-H-H1-M-N-R-S-T-Z1	96603	B-V	96671	B-C-C2-F-F1-F3-R-R1-S-V
96336	B-C-C2-F3-M-R-S-V-W	96516	B-C-C2-D-E1-E2-F-F1-F3-H-H1-M-N-R-S-T-Z1	96604	B-V	96672	B-C-C2-F-F1-F3-R-R1-S-V
96337	B-C2-F-F1-F3-M-R-R1-S-W	96517	B-C-D-E1-E2-F-F1-F3-H-H1-M-N-R-T-U-V-Z1	96605	B-V+B559	96673	B-C-C2-F-F1-F3-R-R1-S-V
96338	A-B-C-C2-F-F3-M-R-S-U2-W	96520	B-F-N-U3-V	96606	B-F3-R-S-V	96674	B-C-C2-F-F1-F3-R-R1-S-V
96339	A-B-F-F3-M-R-S-U2-W	96521	B-C1-C2-F-F1-J-L-M-N-R-R1-S-T-V-Z1	96607	B-V	96675	B-C-C2-F-F1-F3-R-R1-S-V
96343	A-F-F3-M-P-R-S-U2	96530	A-B-C1-C2-F-F1-H-H1-J-L-M-N-R-R1-S-T-V-Z1	96608	B-E2-F-H1-R1-U2-V-Z1	96676	B-C-C2-F-F1-F3-R-R1-S-V
96346	B-F-F1-F2-F3-H-M-R-S-W-Z1	96531	A-B-C-C2-F-F1-F3-H-M-N-R-S-U-V	96609	B-E2-F-H1-R1-U2-V-Z1	96677	B-C-C2-F-F1-F3-R-R1-S-V
96347	B-C2-F-F1-F2-F3-H-M-R-S-W-Z1	96532	A-B-C1-C2-F-F1-H-J-L-M-N-R-R1-S-T-V-Z1	96610	B-C-C2-F-F3-H1-R-R1-S-U2-V-Z1	96678	B-C-C2-F-F1-F3-R-R1-S-V
96349	B-C-C2-F-F1-F2-F3-H-M-R-S-Z1	96534	A-B-C-C2-F-F1-F2-F3-R-R1-S-U-V-Z1	96611	B-C-C2-F-F3-H1-R-R1-S-U2-V-Z1	96679	B-C-C2-F-F1-F3-R-R1-S-V
96350	B-F-F1-F2-F3-H-M-R-S-W-Z1	96535	A-B-C1-C2-F-F1-J-L-M-N-R-R1-S-T-V-Z1	96612	B-C-C2-F-F3-H1-R-R1-S-U2-V-Z1	96681	B-V
96351	B-C-C2-F-F1-F2-F3-H-M-R-R1-S-T-Z1	96537	B-V-Z1	96613	B-C-C2-F-F3-H1-R-R1-S-U2-V-Z1	96682	B-C-C2-F-F1-F3-R-R1-S-V
96362	B-C2-F-F1-F2-F3-H-M-R-S-W-Z1	96540	B-F1-F2-F3-S-V-Z1	96615	B-F-F1-R-R1-V	96683	B-C-C2-F-F1-F3-R-R1-S-V
96365	B-C-C2-F3-M-R-S-W-V	96542	B-F-F1-F2-F3-S-V-Z1	96616	B-C2-F-F1-F3-R-R1-S-V	96686	B-C-C2-F-F1-F3-R-R1-S-V
96367	B-C-C2-F3-L-M-R-S-W	96543	B-F-F1-F2-F3-P-S-V-Z1	96619	B-F1-F3-R-S-V	96691	B-C-C2-F-F1-F3-R-R1-S-V
96368	B-C-C2-F3-M-R-S-W	96544	A-B-C2-F-F1-F3-H-M-R-S-U	96620	B-C-C2-F-F1-F3-R-R1-S-V	96692	B-C-C2-F-F1-F3-R-R1-S-V
96370	B-F-F1-F2-H-M-W-Z1	96548	A-B-C2-F-F1-F3-H-M-R-S-U	96628	B-C-C2-F-F1-F3-R-R1-S-V	96693	B-C-C2-F-F1-F3-R-R1-S-V
96371	B-F-F3-M-R-S-W	96549	A-B-C1-C2-F-F1-H-J-L-M-N-R-R1-S-T-V-Z1	96629	B-C-C2-F-F1-F3-R-R1-S-V	96694	B-C-C2-F-F1-F3-I3-J-R-R1-S-V-Z
96372	B-M-W	96550	A-B-H-M-N-U-V-Z1	96632	B-C-C2-F-F1-F3-R-R1-S-V	96695	B-C-C2-F-F1-F3-R-R1-S-V
96373	B-M-W	96551	A-B-C1-C2-F-F1-H-J-L-M-N-R-R1-S-T-V-Z1	96633	B-V	96696	B-F-F1-R-R1-V
96374	B-M-W	96552	B-Z1	96641	B-V	96698	B-C-C2-F-F1-F3-R-R1-S-V
96375	B-F3-M-R-S-W	96553	A-B-C-C2-F-F1-F3-H-M-N-R-S-U	96642	B-V		
96376	B-F3-M-R-S-W	96554	A-B-C1-C2-F-F1-H-J-L-M-N-R-R1-S-T-V-Z1	96643	B-F-F1-F3-R-R1-S-V		
96377	B-C-C2-F-F3-M-R-S-W	96555	A-B-F-F3-M-R-S-V	96644	B-V		
96378	B-M-W	96557	A-B-F-F3-M-R-S-V	96645	B-V		
96379	B-C2-F3-M-R-S-W			96649	B-C-C2-F-F1-F3-R-R1-S-V		
96380	B-F3-M-R-S-W			96650	B-F-F1-R-R1-V		
96382	B-F-F3-M-R-S-W			96657	B-C-C2-F-F1-F3-R-R1-S-V		
96384	B-F-F3-M-R-S-W			96660	B-C-C2-F-F1-F3-R-R1-S-V		
96385	B-F-F3-M-R-S-W			96661	B-C-C2-F-F1-F3-R-R1-S-V		
96386	B-F3-M-S-W						
96387	B-F3-M-R-S-W						

RESTRICTIONS

LEGEND

PS Form 2976, *Customs — CN 22 (Old C 1) and Sender's Declaration* (green label)

PS Form 2976-A, *Customs Declaration and Dispatch Note*

PS Form 2976-B, *Priority Mail Express International Shipping Label and Customs Form*

ATF	= Bureau of Alcohol, Tobacco, Firearms, and Explosives
Box C	= Department of State (DOS) contractor personnel
Box R	= Retired military personnel
DPO	= Diplomatic Post Office
MPO	= Military Post Office
PACT	= Prevent All Cigarette Trafficking Act
PAL	= Parcel Airlift
PMEMS	= Priority Mail Express Military Service
PUB 52	= Publication 52, <i>Hazardous, Restricted, and Perishable Mail</i>
SAM	= Space Available Mail
USDA	= United States Department of Agriculture

Note: Mail order catalogs are prohibited as SAM or PAL mail.

A. Securities, currency, or precious metals, including in their raw, unmanufactured state, are prohibited. Official Mail shipments are exempt from this restriction.

A1. Reserved for future use.

A2. Reserved for future use.

B. Other than for PMEMS and the exceptions listed below, a customs declaration PS Form 2976 or PS Form 2976-A is required for all items weighing 16 ounces or more, and for all items (regardless of weight) containing potentially dutiable mail contents (e.g., merchandise or goods) addressed to or from this ZIP Code. Other than the exceptions listed below, all PMEMS mailpieces (regardless of mail contents or weight) addressed to or from this ZIP Code must bear a properly completed PS Form 2976-B. The surface area of the address side of the mailpiece must be large enough to contain the applicable customs declaration. The following exceptions apply to known mailers, who for this purpose are defined as follows:

- Business mailers who enter volume mailings through business mail entry units or other bulk mail acceptance locations, pay postage through advance deposit accounts, use permit imprints for postage payment, and submit completed postage statements at the time of entry that certify that the mailpieces contain no dangerous materials that are prohibited by postal regulations. Such business mailers are exempt from providing customs documentation on non-dutiable letters and printed matter.
- All federal, state, and local government agencies whose mailings are regarded as "Official Mail." Such agencies are exempt from providing customs documentation, except for any items addressed to an MPO or DPO to which restriction "B2" applies.

B2. All federal, state, and local government agencies must complete customs documentation when sending potentially dutiable mail addressed to or from this MPO or DPO.

C. Cigarettes and other tobacco products, including tobacco leaves, chewing and pipe tobacco, snuff, and cigars are prohibited, including those that are authorized in Publication 52 under PACT.

C1. Obscene and horror articles, images, prints, paintings, cards, films, videotapes, comic books, etc., are prohibited.

C2. E-cigarettes and related products (e.g., nicotine liquids, e-liquids, parts, or supplies) are prohibited.

D. Coffee is prohibited.

E. Medicines (prescription, over-the-counter, vitamins, and supplements) are prohibited when mailed to individuals for human or animal use. This prohibition does not apply when medicines are sent as Official Mail only between specifically designated agencies such as pharmaceutical distributors, hospitals, clinics, and pharmacies.

E1. Mailers are responsible to ensure that all medicines and vaccines conform to host nation laws.

E2. Any matter depicting nude or seminude persons, pornographic, or sexual items are prohibited. Non-authorized political materials are prohibited. Religious materials contrary to the Islamic faith are prohibited in bulk quantities, but individual items for the personal use of the addressee are permissible.

E3. Radio transceivers, cordless/cellular telephones, global positioning systems, scanners, base stations, and handheld transmitters are prohibited.

F. Firearms of any type are prohibited, except firearms mailed to or by official U.S. government agencies. This restriction does not apply to firearms mailed from this MPO ZIP Code, provided ATF and USPS regulations are met. Antique firearms do not require an ATF form.

F1. Weapons of any type are prohibited.

F2. Mailing firearms to or from this MPO ZIP Code is restricted to one shotgun and one single shot .22 caliber rifle per individual.

F3. Replica weapons and inert explosive devices (such as grenades) and weapons parts are prohibited.

G. Parcels of any class are prohibited.

H. Meats, including preserved meats, bones, skin, hair, feathers, horns or hoofs of hoofed animals, and wool samples whether hermetically sealed or not, are prohibited.

H1. Pork or pork by-products are prohibited.

I. Reserved for future use.

I1. Reserved for future use.

I2. Reserved for future use.

I3. Mail of all classes must fit in a mail sack. Mail may not exceed the following dimensions:

- Maximum length 27 inches.
- Maximum width 14 inches.
- Maximum height 14 inches.

J. Standard Post and Parcel Select parcels may not exceed 108 inches in length and girth combined.

K. Reserved for future use.

L. All Official Mail is prohibited.

M. Fruits, vegetables, live animals, and live plants are prohibited.

N. Registered Mail service is prohibited.

O. Reserved for future use.

P. Official Mail only.

Q. Mail may not exceed 66 pounds, and size is limited to 42 inches maximum length and 72 inches maximum length and girth combined.

R. All alcoholic beverages, including those mailable under Publication 52, Part 421, are prohibited.

R1. Materials used in the production of alcoholic beverages (i.e., distilling material, hops, malts, yeast, etc.) are prohibited.

S. Synthetic cannabinoids used to stimulate the central nervous system commonly known as "synthetic marijuana," "K2," or "Spice" are prohibited.

T. Mailings of household shipments and case lots of food to or from an MPO require military transportation office approval prior to mailing. Mailings to or from a DPO require pre-approval from the Diplomatic Pouch and Mail Director.

U. Mail addressed to Retirees (Box R) is limited to 16 ounces and up to a 90-day supply of TRICARE medications. This restriction does not apply to mail endorsed "Free Matter for the Blind or Handicapped."

U1. Mail is limited to First-Class Mail items, including audio and video media, weighing 13 ounces or less. This limitation does not apply to Official Mail.

U2. Retirees (Box R) are not authorized mail service.

U3. Reserved for future use.

U4. Mail addressed to Box C is limited to 2 lbs.

V. PMEMS is not available.

V1. Electronic Delivery status information for Extra Services is not available on *USPS.com*. Manual record of delivery may be available upon request.

W. Hermetically sealed packages of meat products bearing USDA certification, such as dried beef, salami, and sausage, may be mailed. 200 grams of tobacco per parcel are permitted duty free.

X. Cremated remains are prohibited.

Y. Mail is limited to First-Class Mail and Priority Mail items only. This restriction also applies to Official Mail.

Z. No outside pieces (OSPs).

Z1. The following restriction is applicable only to International Service Centers (ISC)/Exchange Offices. An Anti-Pilferage Seal (Item No O817E or O818A) is required on all pouches and sacks.

— *International Network Operations,
Global Business, 12-15-22*

Thrift Savings Plan Fact Sheet

ANNUAL RETURNS	G Fund	F Fund	U.S. Aggregate Index	C Fund	S&P 500 Stock Index	S Fund	Dow Jones U.S. Completion TSM Index	I Fund	EAFE Stock Index
2015	2.04	0.91	0.55	1.46	1.38	-2.92	-3.42	-0.51	-0.81
2016	1.82	2.91	2.65	12.01	11.96	16.35	15.75	2.10	1.00
2017	2.33	3.82	3.54	21.82	21.83	18.22	18.12	25.42	25.03
2018	2.91	0.15	0.01	-4.41	-4.38	-9.26	-9.57	-13.43	-13.79
2019	2.24	8.68	8.72	31.45	31.49	27.97	27.94	22.47	22.01
2020	0.97	7.50	7.51	18.31	18.40	31.85	32.17	8.17	7.82
2021	1.38	-1.46	-1.54	28.68	28.71	12.45	12.35	11.45	11.26

The G Fund is managed internally by the Federal Retirement Thrift

MONTHLY RETURNS	G Fund	F Fund	U.S. Aggregate Index	C Fund	S&P 500 Stock Index	S * Fund	Dow Jones U.S. Completion TSM Index	I * Fund	EAFE Stock Index
2021									
Dec	0.12	-0.32	-0.26	4.48	4.48	0.58	0.55	5.10	5.12
2022									
Jan	0.13	-2.09	-2.15	-5.18	-5.17	-10.07	-10.09	-3.96	-4.83
Feb	0.14	-1.08	-1.12	-2.99	-2.99	0.03	-0.02	-2.61	-1.77
Mar	0.17	-2.73	-2.78	3.72	3.71	0.90	0.86	-0.33	0.64
Apr	0.20	-3.75	-3.79	-8.72	-8.72	-10.57	-10.58	-6.39	-6.47
May	0.21	1.13	0.64	-1.65	0.18	-3.53	-2.24	1.19	0.75
June	0.29	-1.94	-1.57	-6.55	-8.25	-7.95	-9.26	-8.21	-9.28
July	0.26	2.47	2.44	9.22	9.22	10.32	10.26	5.15	4.98
Aug	0.25	-2.80	-2.83	-4.08	-4.08	-2.08	-2.11	-5.79	-4.75
Sept	0.28	-4.31	-4.32	-9.21	-9.21	-9.91	-9.93	-9.40	-9.35
Oct	0.34	-1.26	-1.30	8.10	8.10	8.59	8.53	5.98	5.38
Nov	0.35	3.70	3.68	5.58	5.59	3.59	3.59	13.72	11.26
YTD	2.65	-12.26	-12.62	-13.11	-13.10	-21.09	-21.41	-12.32	-14.52

Investment Board. Assets of the F, C, S, and I Funds are managed externally. The Board currently has contracts with BlackRock Institutional Trust Company, N.A., to manage the F, C, S, and I Fund assets. The F, C, S, and I Funds invest in commingled trust funds, in which the assets of tax-deferred employee benefit plans are combined and invested together. The F, C, S, and I Funds and the BlackRock funds are passively managed index funds.

Future performance of the funds will vary and may be significantly different from the returns shown above. See the *Summary of the Thrift Savings Plan* for detailed information about the funds and

their investment risks. The monthly returns of the TSP Funds represent net earnings for the month after deduction of accrued administrative expenses and, except for the G Fund, after deduction of trading costs and accrued investment management fees as well. The returns for the four indexes shown do not include any of these deductions.

* Implemented May 2001.

See next page for L Funds.

L Funds

Annual Returns	L Income	L 2020	L 2030	L 2040	L 2050
2015	1.85	1.35	1.04	0.73	0.45
2016	3.58	5.47	7.07	7.90	8.65
2017	6.19	9.86	14.54	16.77	18.81
2018	0.71	-0.36	-3.58	-4.89	-6.02
2019	7.60	9.38	17.60	20.69	23.33
2020	5.15		11.26	13.16	14.79

Annual Returns	L Income	L 2025	L 2030	L 2035	L 2040	L 2045	L 2050	L 2055	L 2060	L 2065
2021	5.42	9.75	12.37	13.43	14.51	15.40	16.34	19.90	19.90	19.90

Monthly Returns	L Income	L 2025	L 2030	L 2035	L 2040	L 2045	L 2050	L 2055	L 2060	L 2065
2021										
Dec	1.06	1.90	2.54	2.76	2.99	3.17	3.37	4.08	4.08	4.08
2022										
Jan	-1.28	-2.37	-3.33	-3.68	-4.01	-4.32	-4.60	-5.41	-5.42	-5.42
Feb	-0.51	-1.01	-1.45	-1.61	-1.76	-1.89	-2.01	-2.38	-2.38	-2.38
Mar	0.49	0.85	1.14	1.21	1.29	1.34	1.42	1.88	1.88	1.87
Apr	-2.04	-3.59	-5.12	-5.63	-6.12	-6.56	-6.97	-8.11	-8.11	-8.11
May	0.04	-0.15	-0.35	-0.41	-0.48	-0.54	-0.61	-0.89	-0.89	-0.89
June	-1.60	-2.98	-4.37	-4.84	-5.29	-5.69	-6.07	-7.25	-7.25	-7.25
July	2.21	3.50	5.00	5.47	5.92	6.33	6.71	7.89	7.90	7.90
Aug	-1.04	-1.83	-2.74	-3.03	-3.30	-3.55	-3.77	-4.36	-4.36	-4.36
Sept	-2.33	-3.98	-5.85	-6.44	-7.01	-7.50	-7.97	-9.29	-9.29	-9.29
Oct	1.98	3.07	4.52	4.91	5.32	5.66	6.02	7.36	7.36	7.36
Nov	2.41	3.62	5.21	5.69	6.15	6.55	6.93	8.03	8.03	8.03
YTD	-1.82	-5.16	-7.89	-8.98	-10.00	-10.94	-11.78	-13.73	-13.74	-13.75

The TSP also added six new L Funds that have 5-year increments rather than the previous 10-year increments.

Freely Associated States Restrictions

We list the mailing restrictions for Freely Associated States (FAS) in the Pull-Out section of the *Postal Bulletin*. All FAS Restrictions will be updated periodically.

Freely Associated States

Mail addressed to freely associated states is subject to certain conditions or restrictions of mailing regarding content, preparation, and handling. The following FAS Restrictions table outlines these conditions as listed by each affected FAS ZIP Code™ through the use of footnoted mailing restrictions codes (see the [Restrictions](#) following the table). For more information on available extra services for FAS destinations, see *Mailing Standards of the United States Postal Service, Domestic Mail Manual (DMM®)*, part 503.

Acceptance clerks must use the table with the Retail System Software terminal to determine which FAS ZIP Codes are active and which conditions of mailing apply.

FAS Restrictions Table

FAS Table	See Restrictions
96939	A, B
96940	A, B
96941	A, B
96942	A, B
96943	A, B
96944	A, B
96960	A, B
96970	A, B, D
Marshall Islands	C
Federated States of Micronesia	C

RESTRICTIONS LEGEND

PS Form 2976, *Customs Declaration CN 22 – Sender's Declaration*

PS Form 2976-A, *Customs Declaration and Dispatch Note*

FAS = Freely Associated State

- A.** Bank currency (coin and paper) is prohibited.
- B.** Signature Confirmation, Signature Confirmation Restricted Delivery, Adult Signature Requested, Adult Signature Restricted Delivery, Certified Mail Adult Signature Required, and Certified Mail Adult Signature Restricted Delivery not available.
- C.** Collect on Delivery is prohibited.
- D.** Betel nut (Areca catechu) is prohibited.

— *Asia-Pacific Relations,
Global Business, 12-15-22*

Stamp Services

Stamp Announcement 23-4: Love 2023 Stamps



©2022 USPS

On January 19, 2023, in Austin, TX, the United States Postal Service® will issue the *Love 2023* stamps (Forever® priced at the First-Class Mail® rate) in two designs, in a pressure-sensitive adhesive (PSA) pane of 20 stamps (Item 580800). These stamps will go on sale nationwide January 19, 2023, and must not be sold or canceled before the first-day-of-issue.

The Postal Service™ continues its popular *Love* series with two new stamps, one featuring a kitten and the other a puppy with the word "LOVE" in all caps behind each animal. Both kitten and puppy are shown with their front paws resting atop a big red heart. The stamp designs were painted with oils on wood panel, then scanned and edited digitally to create the final pieces of art. Art director Ethel Kessler designed the stamps with original art by Chris Buzelli.

Availability to Post Offices: Item 580800, Love 2023 (Forever Priced at the First-Class Mail Rate) Pane of 20 Stamps

Stamp Fulfillment Services will not make an automatic push distribution to Post Offices. Post Offices may begin ordering stamps before the first-day-of-issue through SFS Web at sfsweb.usps.gov/sfsweb.

How to Order the First-Day-of-Issue Postmark

Customers have 120 days to obtain the first-day-of-issue postmark by mail. They may purchase new stamps at their local Post Office™ or at The Postal Store® website at store.usps.com/store/home. They must affix the stamps to envelopes of their choice, address the envelopes (to themselves or others), and place them in a larger envelope addressed to:

FDOI – Love 2023 Stamps
USPS Stamp Fulfillment Services
8300 NE Underground Drive, Suite 300
Kansas City, MO 64144-9900

After applying the first-day-of-issue postmark, the Postal Service will return the envelopes through the mail. There is no charge for the postmark up to a quantity of 50. There is a 5-cent charge for each additional postmark over 50. All orders must be postmarked by May 19, 2023.

How to Order First-Day Covers

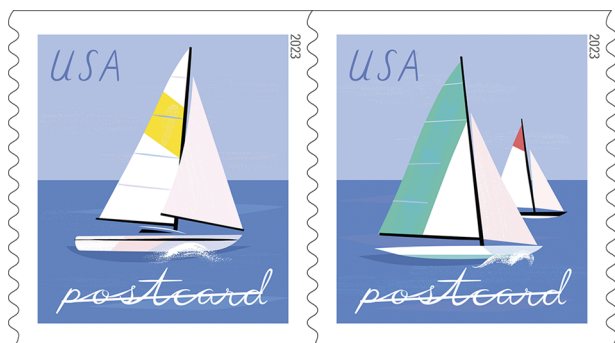
The Postal Service also offers first-day covers for new stamp issues and Postal Service stationery items postmarked with the official first-day-of-issue cancellation. Each item has an individual catalog number and is offered in the *USA Philatelic* catalog and online at store.usps.com/store/home. Customers may register to receive a free *USA Philatelic* catalog online at usps.com/philatelic.

Locally produced items are not authorized. Only merchandise that has been approved and assigned an item number by Headquarters Retail Marketing may be produced and sold.

Issue:	<i>Love 2023 Stamps</i>
Item Number:	580800
Denomination & Type of Issue:	First-Class Mail Forever
Format:	Pane of 20 (2 designs)
Series:	<i>Love</i>
Issue Date & City:	January 19, 2023, Austin, TX, 78710
Art Director:	Ethel Kessler, Bethesda, MD
Designer:	Ethel Kessler, Bethesda, MD
Artist:	Chris Buzelli, New York, NY
Typographer:	Ethel Kessler, Bethesda, MD
Modeler:	Sandra Lane / Michelle Finn
Manufacturing Process:	Offset
Printer:	Banknote Corporation of America
Press Type:	Alprinta RCS
Stamps per Pane:	20
Print Quantity:	200,000,000 stamps
Paper Type:	Phosphor, Block Tag
Adhesive Type:	Pressure-sensitive
Colors:	Cyan, Magenta, Yellow, Black, Pantone 871, Pantone Warm Gray 1
Stamp Orientation:	Vertical
Image Area (w x h):	0.77 x 1.05 in / 19.558 x 26.67 mm
Overall Size (w x h):	0.91 x 1.19 in / 23.114 x 30.226 mm
Full Pane Size (w x h):	5.55 x 5.76 in / 140.97 x 146.304 mm
Press Sheets Size (w x h):	23.04 x 11.10 in / 585.216 x 281.94 mm
Plate Size:	320 stamps per revolution
Plate Number:	"B" followed by six (6) single digits in four corners
Marginal Markings:	
Front:	Plate number in four corners
Back:	©2022 USPS • USPS logo • Two barcodes (580800) • Plate position diagram (8) • Promotional text

— *Stamp Services,
Marketing, 12-15-22*

Stamp Announcement 23-5: Sailboats Stamps



©2022 USPS

On January 22, 2023, in Lahaina, HI, the United States Postal Service® will issue the *Sailboats* stamps (Non-denominated priced at the Postcard rate) in two designs, in a pressure-sensitive adhesive (PSA) pane of 20 stamps (Item 122500) and a PSA coil of 100 stamps (Item 740600). These stamps will go on sale nationwide January 22, 2023, and must not be sold or canceled before the first-day-of-issue.

Sailboats celebrates a favorite American outdoor activity with two colorful postcard stamps featuring different graphic illustrations that capture the joyful sensation of being on the water on a beautiful day. Artist Libby VanderPloeg started with pencil sketches, then moved into Adobe Illustrator to create the final work in bright, crisp color. VanderPloeg designed the stamps and created the lettering for the word “postcard.” Antonio Alcalá served as art director for the project.

Availability to Post Offices: Item 122500, *Sailboats* (Non-denominated, Postcard Rate) Pane of 20 Stamps

Stamp Fulfillment Services will not make an automatic push distribution to Post Offices. Post Offices may begin ordering stamps before the first-day-of-issue through SFS Web at sfsweb.usps.gov/sfsweb.

Availability to Post Offices: Item 740600, *Sailboats* (Non-denominated, Postcard Rate) Coil of 100 Stamps

Stamp Fulfillment Services will not make an automatic push distribution to Post Offices. Post Offices may begin ordering stamps before the first-day-of-issue through SFS Web at sfsweb.usps.gov/sfsweb.

How to Order the First-Day-of-Issue Postmark

Customers have 120 days to obtain the first-day-of-issue postmark by mail. Each cover must have sufficient postage to meet First-Class Mail® requirements. They may purchase new stamps at their local Post Office™ or at The Postal Store® website at store.usps.com/store/home. They

must affix the stamps to envelopes of their choice, address the envelopes (to themselves or others), and place them in a larger envelope addressed to:

FDOI – Sailboats Stamps
 USPS Stamp Fulfillment Services
 8300 NE Underground Drive, Suite 300
 Kansas City, MO 64144-9900

After applying the first-day-of-issue postmark, the Postal Service will return the envelopes through the mail. There is no charge for the postmark up to a quantity of 50. There is a 5-cent charge for each additional postmark over 50. All orders must be postmarked by May 22, 2023.

How to Order First-Day Covers

The Postal Service also offers first-day covers for new stamp issues and Postal Service stationery items postmarked with the official first-day-of-issue cancellation. Each item has an individual catalog number and is offered in the *USA Philatelic* catalog and online at store.usps.com/store/home. Customers may register to receive a free *USA Philatelic* catalog online at usps.com/philatelic.

Locally produced items are not authorized. Only merchandise that has been approved and assigned an item number by Headquarters Retail Marketing may be produced and sold.

Issue:	<i>Sailboats</i> Stamps
Item Number:	122500
Denomination & Type of Issue:	Postcard Rate Non-denominated, Mail-use
Format:	Pane of 20 (2 designs)
Series:	N/A
Issue Date & City:	January 22, 2023, Lahaina, HI 96761
Art Director:	Antonio Alcalá, Alexandria, VA
Designer:	Libby VanderPloeg
Typographer:	Libby VanderPloeg
Illustrator:	Libby VanderPloeg
Modeler:	Joseph Sheeran
Manufacturing Process:	Offset
Printer:	Ashton Potter (USA) Ltd (APU)
Press Type:	Muller A76
Stamps per Pane:	20
Print Quantity:	120,000,000 stamps
Paper Type:	Nonphosphored Type III, Block Tag
Adhesive Type:	Pressure-sensitive
Colors:	Black, Cyan, Magenta, Yellow
Stamp Orientation:	Vertical
Image Area (w x h):	0.73 x 0.84 in / 18.542 x 21.336 mm
Stamp Size (w x h):	0.87 x 0.98 in / 22.098 x 24.892 mm
Pane Size (w x h):	5.35 x 4.93 in / 135.89 x 125.222 mm
Plate Size:	400 stamps per revolution
Plate Number:	“P” followed by four (4) single digits
Front:	Plate number in four (4) corners of pane
Back:	©2022 USPS • USPS logo • Two barcodes (122500) • Plate position diagram (10) • Promotional text

Issue:	<i>Sailboats</i> Stamps
Item Number:	740600
Denomination & Type of Issue:	Postcard Rate Non-denominated, Mail-use
Format:	Coil of 100 (2 designs)
Series:	N/A
Issue Date & City:	January 22, 2023, Lahaina, HI 96761
Art Director:	Antonio Alcalá, Alexandria, VA
Designer:	Libby VanderPloeg
Typographer:	Libby VanderPloeg
Illustrator:	Libby VanderPloeg
Modeler:	Joseph Sheeran
Manufacturing Process:	Offset
Printer:	Ashton Potter (USA) Ltd (APU)
Press Type:	Muller A76
Stamps per Coil:	100
Print Quantity:	350,000,000 stamps
Paper Type:	Nonphosphored Type III, Block Tag
Adhesive Type:	Pressure-sensitive
Colors:	Black, Cyan, Magenta, Yellow
Stamp Orientation:	Vertical
Image Area (w x h):	0.73 x 0.84 in. / 18.542 x 21.336 mm
Stamp Size (w x h):	0.90 x 0.98 in. / 22.86 x 24.892 mm
Plate Size:	720 stamps per revolution
Plate Number:	"P" followed by four (4) single digits
Coil Number Frequency:	Plate number every 30th stamp below stamp image

— *Stamp Services,*
Marketing, 12-15-22

Stamp Announcement 23-6: Ernest J. Gaines Stamp



©2022 USPS

On January 23, 2023, in Lafayette, LA, the United States Postal Service® will issue the *Ernest J. Gaines* stamp (Forever® priced at the First-Class Mail® rate) in one design, in a pressure-sensitive adhesive (PSA) pane of 20 stamps (Item 482900). This stamp will go on sale nationwide January 23, 2023, and must not be sold or canceled before the first-day-of-issue.

The 46th stamp in the *Black Heritage* series honors author Ernest J. Gaines (1933–2019). Best known for such novels as *The Autobiography of Miss Jane Pittman* and *A Lesson Before Dying*, Gaines drew from his childhood as the son of sharecroppers on a Louisiana plantation to explore the untold stories of rural African Americans. The stamp features an oil painting of Gaines based on a 2001 photograph by Raoul Benavides. Mike Ryan designed the stamp with art by Robert Peterson. Greg Breeding served as art director.

Availability to Post Offices: Item 482900, Ernest J. Gaines (Forever Priced at the First-Class Mail Rate) Pane of 20 Stamps

Stamp Fulfillment Services will make an automatic push distribution to Post Offices of a quantity to cover approximately 30 days of sales. Distribution quantities for the automatic push distribution will be available by logging on to SFS Web at sfsweb.usps.gov/sfsweb. Post Offices may begin ordering stamps on the first-day-of-issue through SFS Web; offices must also check the amount they will receive on their automatic push distribution.

Special Dedication Postmarks

Only the following pictorial postmark is permitted for the *Ernest J. Gaines* stamp. The word “Station” or the abbreviation “STA” is required somewhere in the design because it will be a temporary station. Use of any image other than the following special pictorial image is prohibited.

Guidelines for Finalizing Ernest J. Gaines Stamp Pictorial Postmark Art



To finalize the *Ernest J. Gaines* stamp pictorial postmark art, insert the date, city, state, and ZIP Code™ of the physical location of your event adjacent to the stamp image. Overall dimensions of the pictorial postmark must not exceed 4 inches (horizontally) by 2 inches (vertically). Collectors prefer the dimensions 3-1/2 inches by 1 inch.

The Postal Service™ must make all special postmarks known to collectors through advance publicity in the *Postal Bulletin*. Therefore, all special dedication cancellations must be reported to Stamp Services 4 weeks before the event using PS Form 413, Pictorial Postmark Announcement/Report. To get a copy of the form, go to blue.usps.gov/formgmt/forms/ps413.pdf.

How to Order the First-Day-of-Issue Postmark

Customers have 120 days to obtain the first-day-of-issue postmark by mail. They may purchase new stamps at their local Post Office™ or at The Postal Store® website at store.usps.com/store/home. They must affix the stamps to envelopes of their choice, address the envelopes (to themselves or others), and place them in a larger envelope addressed to:

FDI - Ernest J. Gaines Stamp
USPS Stamp Fulfillment Services
8300 NE Underground Drive, Suite 300
Kansas City, MO 64144-9900

After applying the first-day-of-issue postmark, the Postal Service will return the envelopes through the mail. There is no charge for the postmark up to a quantity of 50. There is a 5-cent charge for each additional postmark over 50. All orders must be postmarked by May 23, 2023.

How to Order First-Day Covers

The Postal Service also offers first-day covers for new stamp issues and Postal Service stationery items postmarked with the official first-day-of-issue cancellation. Each item has an individual catalog number and is offered in the *USA Philatelic* catalog and online at store.usps.com/store/home. Customers may register to receive a free *USA Philatelic* catalog online at usps.com/philatelic.

Locally produced items are not authorized. Only merchandise that has been approved and assigned an item number by Headquarters Retail Marketing may be produced and sold.

Issue:	<i>Ernest J. Gaines</i> Stamp
Item Number:	482900
Denomination & Type of Issue:	First-Class Mail Forever
Format:	Pane of 20 (1 design)
Series:	<i>Black Heritage</i>
Issue Date & City:	January 23, 2023, Lafayette, LA, 70501
Art Director:	Greg Breeding, Charlottesville, VA
Designer:	Mike Ryan, Charlottesville, VA
Artist:	Robert Peterson, Lawton, OK
Modeler:	Sandra Lane / Michelle Finn
Manufacturing Process:	Offset, Microprint
Printer:	Banknote Corporation of America
Press Type:	Alprinta 74
Stamps per Pane:	20
Print Quantity:	35,000,000 stamps
Paper Type:	Phosphor, Block Tag
Adhesive Type:	Pressure-sensitive
Colors:	Cyan, Magenta, Yellow, Black, Pantone 3597
Stamp Orientation:	Vertical
Image Area (w x h):	0.84 x 1.42 in / 21.336 x 36.068 mm
Overall Size (w x h):	0.98 x 1.56 in / 24.892 x 39.624 mm
Full Pane Size (w x h):	6.00 x 8.50 in / 152.40 x 215.90 mm
Press Sheets Size (w x h):	18.0 x 25.75 in./ 457.20 x 654.05 mm
Plate Size:	180 stamps per revolution
Plate Number:	"B" followed by four (4) single digits in two corners
Marginal Markings:	
Front:	Header: "Black Heritage, Celebrating Ernest J. Gaines, 46th in a series" • Plate number in bottom 2 corners
Back:	©2022 USPS • USPS logo • Two barcodes (482900) • Plate position diagram (9) • Promotional text

— Stamp Services,
Marketing, 12-15-22

Pictorial Postmarks Announcement

As a community service, the Postal Service™ offers pictorial postmarks to commemorate local events celebrated in communities throughout the nation. A list of events for which pictorial postmarks are authorized appears on the following pages. The sponsor of the pictorial postmark appears in italics under the date. Also provided are illustrations of these postmarks.

People attending these local events may obtain the postmark in person at the temporary Post Office™ station established there. Those who cannot attend the event but who wish to obtain the postmark may submit a mail order request. Pictorial postmarks are available only for the dates indicated, and *requests must be postmarked no later than 30 days following the requested pictorial postmark date.*

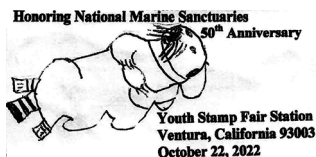
All requests must include a stamped envelope or postcard bearing at least the minimum First-Class Mail® postage. Items submitted for postmark may not include

postage issued after the date of the requested postmark. Such items will be returned unserved.

Customers wishing to obtain a postmark must affix stamps to any envelope or postcard of their choice, address the envelope or postcard to themselves or others, insert a card of postcard thickness in envelopes for sturdiness, and tuck in the flap. Place the envelope or postcard in a larger envelope and address it to: Pictorial Postmarks, followed by the Name of the Station, Address, City, State, ZIP+4® Code, as listed next to the postmark.

Customers can also send stamped envelopes and postcards without addresses for postmark, as long as they supply a larger envelope with adequate postage and their return address. After applying the pictorial postmark, the Postal Service returns the items (with or without addresses) under addressed protective cover.

The following pictorial postmark has been extended for 60 days:

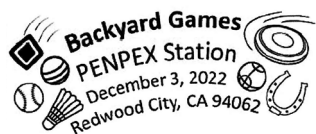


October 22, 2022
Ventura County Philatelic Society
 Youth Stamp Fair Station
 Postmaster
 675 East Santa Clara Street
 Ventura, CA 93001-9998

The following pictorial postmarks have been extended for 30 days:



November 30, 2022
United States Postal Service
 Camara De Representantes Station
 Customer Relations Specialist
 585 Avenue Franklin D. Roosevelt, Suite 223
 San Juan, PR 00936-9998



December 3, 2022
PENPEX
 PENPEX Station
 Postmaster
 1100 Broadway Street
 Redwood City, CA 94061-9998

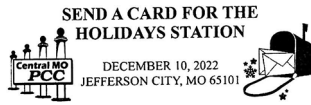


December 4, 2022
PENPEX
 PENPEX Station
 Postmaster
 1100 Broadway Street
 Redwood City, CA 94061-9998



December 9, 2022

The Seneca Falls It's a Wonderful Life Museum and Archives
Bedford Falls Station
Postmaster
38 State Street
Seneca Falls, NY 13148-9998



December 10, 2022

Central Missouri Postal Customer Council
Send A Card for The Holidays Station
Postmaster
511 East Walnut Street
Columbia, MO 65201-9998



December 10, 2022

Winterfest Boat Parade
Winterfest Boat Parade Station
Postmaster
1900 West Oakland Park Boulevard
Fort Lauderdale, FL 33310-9998



December 10, 2022

United States Postal Service
Christmas in Wales Station
Postmaster
110 James Street
Wales, WI 53183-9998



December 14, 2022

United States Postal Service
Festival of Lights Station
Postmaster
50 Brewery Street
New Haven, CT 06511-9998

— Stamp Services,
Marketing, 12-15-22

How to Order the First-Day-of-Issue Digital Color or Traditional Postmarks

Customers have 120 days to obtain the first-day-of-issue postmarks by mail. Each cover must have sufficient postage to meet First-Class Mail® requirements. Customers may purchase new stamps at their local Post Office™, by phone at 844-737-7826, or on The Postal Store® website at usps.com/shop.

Digital Color Postmarks

Only select stamp issues offer a digital color postmark. Customers may submit #6 or #10 envelopes constructed of paper rated as “laser safe.” The Postal Service™ recommends envelopes of 80-pound Accent Opaque, acid-free, 9/16-inch side seams with no glue on the flap. The maximum size of all digital color postmarks is 2 inches (vertically) by 4 inches (horizontally). Allow sufficient space on the envelope to accommodate the postmark. Do not use self-adhesive labels for addresses on the envelope. Two test envelopes must be included. There is a minimum of 10 envelopes at 50 cents per postmark required at the time of servicing. Customers must submit a check, money order, or credit card for payment.

The Postal Service reserves the right to not accept hand-painted and other cachet envelopes that are not compatible with our digital color postmark equipment. The Postal Service also reserves the right to substitute traditional black rubber postmarks if use of nonspecified envelopes results in poor image quality or damage to equipment.

Customers must affix the stamps to the envelopes and address them to themselves or others for return through the mail. Or, they may include an additional self-addressed return envelope, large enough to accommodate their canceled items, with sufficient postage affixed for return of

their postmarked items. Address customer requests for digital color postmarks to:

FDOI – (Name of Stamp Issue)
 USPS Stamp Fulfillment Services
 8300 NE Underground Drive, Suite 300
 Kansas City, MO 64144-9900

After applying the first-day-of-issue postmark, the Postal Service will return the envelopes to the customer by U.S. Mail®.

Traditional Postmarks

Customers must affix the stamps to the envelopes and address them to themselves or others for return through the mail. Or, they may include an additional self-addressed return envelope, large enough to accommodate their canceled items, with sufficient postage affixed for return of their postmarked items. Address customer requests for traditional postmarks to:

FDOI – (Name of Stamp Issue)
 USPS Stamp Fulfillment Services
 8300 NE Underground Drive, Suite 300
 Kansas City, MO 64144-9900

After applying the first-day-of-issue postmark, the Postal Service will return the envelopes to the customer by U.S. Mail. There is no charge for the first 50 postmarks. There is a 5-cent charge for each additional postmark over 50. Customers must submit a check, money order, or credit card for payment.

Locally produced items are not authorized. Only merchandise that has been approved and assigned an item number by Headquarters Retail Marketing may be produced and sold.



Digital Color Pictorial

FDOI – Pony Cars Stamps

USPS Stamp Fulfillment Services
 8300 NE Underground Drive, Suite 300
 Kansas City, MO 64144-9900

December 25, 2022



Black and White Pictorial

FDOI – Pony Cars Stamps

USPS Stamp Fulfillment Services
 8300 NE Underground Drive, Suite 300
 Kansas City, MO 64144-9900

December 25, 2022



FDI – James Webb Space Telescope Stamp

USPS Stamp Fulfillment Services January 8, 2023
 8300 NE Underground Drive, Suite 300
 Kansas City, MO 64144-9900

Digital Color Pictorial



FDI – James Webb Space Telescope Stamp

USPS Stamp Fulfillment Services January 8, 2023
 8300 NE Underground Drive, Suite 300
 Kansas City, MO 64144-9900

Black and White Pictorial



FDI – Holiday Elves Stamps

USPS Stamp Fulfillment Services January 15, 2023
 8300 NE Underground Drive, Suite 300
 Kansas City, MO 64144-9900

Digital Color Pictorial



FDI – Holiday Elves Stamps

USPS Stamp Fulfillment Services January 15, 2023
 8300 NE Underground Drive, Suite 300
 Kansas City, MO 64144-9900

Black and White Pictorial



FDI – Virgin and Child Stamp

USPS Stamp Fulfillment Services January 22, 2023
 8300 NE Underground Drive, Suite 300
 Kansas City, MO 64144-9900

Digital Color Pictorial



FDI – Virgin and Child Stamp

USPS Stamp Fulfillment Services January 22, 2023
 8300 NE Underground Drive, Suite 300
 Kansas City, MO 64144-9900

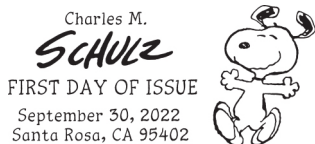
Black and White Pictorial



FDI – Charles M. Schulz Stamps

USPS Stamp Fulfillment Services January 30, 2023
 8300 NE Underground Drive, Suite 300
 Kansas City, MO 64144-9900

Digital Color Pictorial



FDI – Charles M. Schulz Stamps
 USPS Stamp Fulfillment Services
 8300 NE Underground Drive, Suite 300
 Kansas City, MO 64144-9900

January 30, 2023

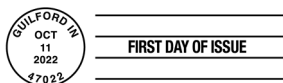
Black and White Pictorial



FDI – Snowy Beauty Stamps
 USPS Stamp Fulfillment Services
 8300 NE Underground Drive, Suite 300
 Kansas City, MO 64144-9900

February 11, 2023

Digital Color Pictorial



FDI – Snowy Beauty Stamps
 USPS Stamp Fulfillment Services
 8300 NE Underground Drive, Suite 300
 Kansas City, MO 64144-9900

February 11, 2023

Black and White Pictorial



FDI – Kwanzaa 2022 Stamp
 USPS Stamp Fulfillment Services
 8300 NE Underground Drive, Suite 300
 Kansas City, MO 64144-9900

February 13, 2023

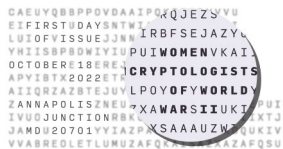
Digital Color Pictorial



FDI – Kwanzaa 2022 Stamp
 USPS Stamp Fulfillment Services
 8300 NE Underground Drive, Suite 300
 Kansas City, MO 64144-9900

February 13, 2023

Black and White Pictorial



FDI – Women Cryptologists of World War II Stamp
 USPS Stamp Fulfillment Services
 8300 NE Underground Drive, Suite 300
 Kansas City, MO 64144-9900

February 18, 2023

Digital Color Pictorial



FDI – Women Cryptologists of World War II Stamp
 USPS Stamp Fulfillment Services
 8300 NE Underground Drive, Suite 300
 Kansas City, MO 64144-9900

February 18, 2023

Black and White Pictorial



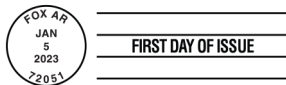
FDI – Hanukkah 2022 Stamp
USPS Stamp Fulfillment Services
8300 NE Underground Drive, Suite 300
Kansas City, MO 64144-9900

February 20, 2023

Digital Color Pictorial

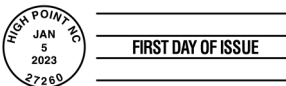
FDI – Hanukkah 2022 Stamp
USPS Stamp Fulfillment Services
8300 NE Underground Drive, Suite 300
Kansas City, MO 64144-9900

February 20, 2023

Black and White Pictorial

FDI – Red Fox Stamp
USPS Stamp Fulfillment Services
8300 NE Underground Drive, Suite 300
Kansas City, MO 64144-9900

May 5, 2023

Black and White Pictorial

FDI – School Bus Stamp
USPS Stamp Fulfillment Services
8300 NE Underground Drive, Suite 300
Kansas City, MO 64144-9900

May 5, 2023

Black and White Pictorial

FDI – Lunar New Year: Year of the Rabbit Stamp
USPS Stamp Fulfillment Services
8300 NE Underground Drive, Suite 300
Kansas City, MO 64144-9900

May 12, 2023

Digital Color Pictorial

FDI – Lunar New Year: Year of the Rabbit Stamp
USPS Stamp Fulfillment Services
8300 NE Underground Drive, Suite 300
Kansas City, MO 64144-9900

May 12, 2023

Black and White Pictorial



Digital Color Pictorial

FDI – Love 2023 Stamps

USPS Stamp Fulfillment Services
 8300 NE Underground Drive, Suite 300
 Kansas City, MO 64144-9900

May 19, 2023

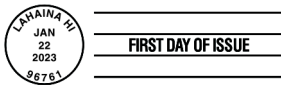


Black and White Pictorial

FDI – Love 2023 Stamps

USPS Stamp Fulfillment Services
 8300 NE Underground Drive, Suite 300
 Kansas City, MO 64144-9900

May 19, 2023



Black and White Pictorial

FDI – Sailboats Stamps

USPS Stamp Fulfillment Services
 8300 NE Underground Drive, Suite 300
 Kansas City, MO 64144-9900

May 22, 2023



Digital Color Pictorial

FDI – Ernest J. Gaines Stamp

USPS Stamp Fulfillment Services
 8300 NE Underground Drive, Suite 300
 Kansas City, MO 64144-9900

May 23, 2023



Black and White Pictorial

FDI – Ernest J. Gaines Stamp

USPS Stamp Fulfillment Services
 8300 NE Underground Drive, Suite 300
 Kansas City, MO 64144-9900

May 23, 2023



Bring Smiles to the Holidays with ***Holiday Elves*** Forever® Stamps



ON SALE NATIONWIDE: SEPTEMBER 15, 2022

