

# postal|bulletin

PUBLISHED SINCE MARCH 4, 1880

## NEED A PASSPORT?

Schedule your  
appointment online  
at ***usps.com***<sup>®</sup>.

See page 3.



# Contents

## COVER STORY

A U.S. Passport is Your Key to International Travel . . . . . 3

## POLICIES, PROCEDURES, AND FORMS UPDATES

### Manuals

ASM Revision: Line of Succession for Postmaster  
 General in an Emergency . . . . . 4  
 IMM Revision: Electronic USPS Delivery Confirmation  
 International Service . . . . . 4  
 IMM Revision: Updates to Various Individual  
 Country Listings . . . . . 5

### Publications

Publication 22 Revision: Updates for Expedited  
 Packaging Supplies . . . . . 9  
 Publication 223 Revision: Directives and Forms Update. . . . . 10  
 Publication 431 Revision: Changes to Post Office  
 Box Service and Caller Service Fee Groups . . . . . 12

## ORGANIZATION INFORMATION

### Environmental Management

Compliance Reminder: Refrigerant Management . . . . . 13  
 USPS Stormwater Policy Reminder: Vehicle Washing . . . . . 14

### Finance

Equipment Maintenance Allowance Schedule for  
 Rural Routes . . . . . 14

### Human Resources

Burn Notice: UV Safety Awareness Month . . . . . 17

### Information Security

Report Information Security Incidents Right Away . . . . . 35

### Mailing and Shipping Services

Mail Alert . . . . . 35

### Stamp Services

Special Dedication 50th Anniversary Postmark  
 Announcement . . . . . 37  
 Stamp Announcement 21-24: Mid-Atlantic  
 Lighthouses Stamps . . . . . 38

Stamp Announcement 21-25: Missouri  
 Statehood Stamp . . . . . 40  
 Stamp Announcement 21-26: Backyard  
 Games Stamps . . . . . 41  
 Pictorial Postmarks Announcement . . . . . 43  
 How to Order the First-Day-of-Issue Digital Color  
 or Traditional Postmarks . . . . . 45

### Supply Management

Interest Rate on Contract Claims . . . . . 51

## PULL-OUT INFORMATION

### Fraud

Invalid USPS Corporate Account Numbers . . . . . 19  
 Missing, Lost, or Stolen U.S. Money Order Forms . . . . . 20  
 Missing, Lost, or Stolen Canadian Money Order Forms . . . . . 26  
 Verifying U.S. Postal Service Money Orders . . . . . 28  
 Counterfeit Canadian Money Order Forms . . . . . 28  
 Toll-Free Number Available to Verify Canadian  
 Money Orders . . . . . 28

### Other Information

Overseas Military/Diplomatic Mail . . . . . 29  
 Freely Associated States Restrictions . . . . . 34

## POSTAL BULLETIN 2020 ANNUAL INDEX

2020 Annual Index . . . . . PB 22564 (1-28-21)

Find the latest in mail and delivery information  
 and services offered by U.S. Postal®  
 in the *Postal Bulletin* at  
[about.usps.com/postal-bulletin](https://about.usps.com/postal-bulletin)

**Mail Moment®**

# Cover Story

## A U.S. Passport is Your Key to International Travel

The U.S. Department of State's Passport Services Directorate issues U.S. passports to traveling Americans. Passports are a request to foreign governments to permit you to travel, and also allow you to re-enter the United States.

A passport book or card is proof of identity and U.S. citizenship. U.S. citizens can use each as follows:

- The passport book for all international travel by air, land, or sea.
- The passport card to enter the United States from Canada, Mexico, the Caribbean, and Bermuda, and at land border crossings or sea ports-of-entry. U.S. citizens cannot use the passport card for international air travel. The wallet-size passport card is convenient and less expensive than the passport book.

Whether you plan to apply for a first-time passport book, passport card, or both, submitting your passport application is easy. The United States Postal Service® makes it convenient to apply for a passport with the Retail Customer Appointment Scheduler (RCAS) tool. Customers now have the opportunity to self-schedule a first-time passport application appointment through a variety of options:

- Online or on a mobile device at [usps.com](https://usps.com) scheduler.
- At any one of the 2700 Self-Service Kiosks (SSKs).
- At the Retail counter of more than 17,000 select Post Offices.

The RCAS tool guides you through the appointment process in four easy steps:

1. Choose a service.
2. Find available appointments.
3. Select your appointment time.
4. Provide contact information.

The RCAS tool will display available appointment times for participating Post Office™ locations that offer passport appointment services within the selected radius. Users will receive notifications of their scheduled appointment via email or text.

If you are renewing your passport, you must do so by mail. You do not need to make an appointment for the renewal. The directions are straightforward— simply take your documents and payment to the nearest Post Office and mail everything to the U.S. Department of State using Priority Mail® or Priority Mail Express® service.

For best results, follow these passport and international travel tips:

- Apply for your passport book or card early.
- Check the expiration date of your current passport. U.S. passports are issued to adults for 10 years and children under the age of 16 for 5 years.
- Visit the Department of State website at [travel.state.gov/content/travel/en/passports.html](https://travel.state.gov/content/travel/en/passports.html) for the following information:
  - Find out how to apply for or renew your passport;
  - Get passport fees and forms;
  - Track your application; or
  - Report your passport lost or stolen.
- Enroll in the Smart Traveler Enrollment Program at [step.state.gov/step](https://step.state.gov/step). U.S. citizens and nationals who travel and live abroad can use this free service to register their trip with the nearest U.S. Embassy or Consulate.

— Retail Services,  
Delivery and Retail Customer Service Operations, 7-1-21

# Policies, Procedures, and Forms Updates

## Manuals

### ASM Revision: Line of Succession for Postmaster General in an Emergency

Effective July 1, 2021, the Postal Service™ is revising the *Administrative Support Manual* to indicate the line of succession for the Postmaster General for the duration of an emergency to reflect the recent organizational restructuring.

#### **Administrative Support Manual (ASM)**

\* \* \* \* \*

#### **2 Audits and Investigations**

\* \* \* \* \*

#### **28 Emergency Preparedness**

\* \* \* \* \*

#### **286 Emergency Lines of Succession**

##### **286.1 Postmaster General**

*[Revise the text of 286.1 to read as follows:]*

Effective immediately, if the Postmaster General is incapacitated due to an enemy attack or other national emergency, the following is the line of succession to perform the duties of the Postmaster General for the duration of the emergency:

- a. Deputy Postmaster General and Chief Human Resources Officer.

- b. Chief Retail and Delivery Officer and Executive Vice President.

- c. Chief Logistics and Processing Operations Officer and Executive Vice President.

- d. Vice President, Area Retail and Delivery Operations, Western Pacific.

\* \* \* \* \*

The Postal Service will incorporate this revision into the next edition of the online ASM, which is available on the PolicyNet website:

- Go to [blue.usps.gov](https://blue.usps.gov).
- In the left-hand column, click *Essential Links*, and then click *PolicyNet*.
- Go to the right-hand side under “Published Forms and Directives.”
- Click *Manuals*.

The direct URL for the Postal Service PolicyNet website is [blue.usps.gov/cpim](https://blue.usps.gov/cpim).

— Office of the Postmaster General,  
Chief Executive Officer, 7-1-21

### IMM Revision: Electronic USPS Delivery Confirmation International Service

Effective July 1, 2021, the Postal Service™ is revising *Mailing Standards of the United States Postal Service, International Mail Manual (IMM®)*, sections 252.21 and 252.22, to provide clarification regarding the availability of Electronic USPS Delivery Confirmation International service (E-USPS DELCON INTL®).

In addition, the Postal Service is removing section 252.25 because postage payment options for First-Class Package International Service® are more fully addressed in section 253.2.

#### **Mailing Standards of the United States Postal Service, International Mail Manual (IMM)**

\* \* \* \* \*

#### **2 Conditions for Mailing**

\* \* \* \* \*

#### **250 First-Class Package International Service**

\* \* \* \* \*

#### **252 Eligibility**

\* \* \* \* \*

#### **252.2 Electronic USPS Delivery Confirmation International Service (E-USPS DELCON INTL)**

##### **252.21 Description**

*[Revise the text of 252.21 to read as follows:]*

Electronic USPS Delivery Confirmation International service — abbreviated E-USPS DELCON INTL — is a tracking service available at no charge for First-Class Package International Service items to select destination countries (see 252.22). Tracking information includes the date and time an article was delivered or, if delivery was attempted but not completed, the date and time of the delivery

attempt. The sender can check delivery status by going to [usps.com](https://usps.com) and entering the tracking number in the box under “Search or Track Packages.”

### 252.22 Availability

[Revise the text of 252.22 (before the exhibit) to read as follows:]

E-USPS DELCON INTL is available electronically to the countries listed in Exhibit 252.22. Limitations may apply for certain destinations.

\* \* \* \* \*

[Delete 252.25 and renumber current 252.26 as 252.25.]

\* \* \* \* \*

Although effective July 1, 2021, the Postal Service will incorporate these revisions into the next edition of the online IMM, which is available via Postal Explorer® at [pe.usps.com](https://pe.usps.com).

— Product Classification,  
Product Solutions, 7-1-21

## IMM Revision: Updates to Various Individual Country Listings

Effective July 1, 2021, the Postal Service™ is revising the Individual Country Listing (ICL) for various countries in *Mailing Standards of the United States Postal Service, International Mail Manual (IMM)*® to note the following:

- The value-added tax (VAT) exemption is abolished.
- The country requires that the VAT must be declared and paid upon import.
- When the mailer pays the VAT, the electronically transmitted customs declaration data must include the VAT identification number.

These ICL revisions are a result of formal requests made by each destination country through the Universal Postal Union (UPU) via an International Bureau Circular (IBC), as follows:

- Belgium: As indicated in UPU IBC 138 dated September 28, 2020.
- Bulgaria: As indicated in UPU IBC 206 dated December 21, 2020.
- Cyprus: As indicated in UPU IBC 203 dated December 21, 2020.
- Czech Republic: As indicated in UPU IBC 126 dated September 14, 2020.
- Denmark: As indicated in UPU IBC 200 dated December 14, 2020.
- Finland: As indicated in UPU IBC 213 dated December 21, 2020.
- France: As indicated in UPU IBC 101 dated July 20, 2020.
- Greece: As indicated in UPU IBC 202 dated December 21, 2020.
- Hungary: As indicated in UPU IBC 2 dated January 4, 2021.
- Ireland: As indicated in UPU IBC 173 dated November 16, 2020.
- Italy: As indicated in UPU IBC 167 dated November 9, 2020.

- Lithuania: As indicated in UPU IBC 185 dated December 7, 2020.
- Luxembourg: As indicated in UPU IBC 168 dated November 9, 2020.
- Malta: As indicated in UPU IBC 159 dated November 2, 2020.
- Netherlands: As indicated in UPU IBC 133 dated September 21, 2020.
- Romania: As indicated in UPU IBC 150 dated October 19, 2020.
- Slovak Republic (Slovakia): As indicated in UPU IBC 184 dated December 7, 2020.
- Slovenia: As indicated in UPU IBC 191 dated December 14, 2020.
- Spain: As indicated in UPU IBC 134 dated September 21, 2020.
- Sweden: As indicated in UPU IBC 199 dated December 14, 2020.

Also, Poland made the same request by email dated June 8, 2021.

### ***Mailing Standards of the United States Postal Service, International Mail Manual (IMM)***

\* \* \* \* \*

#### **Individual Country Listings**

\* \* \* \* \*

#### **Belgium**

#### **Country Conditions for Mailing**

\* \* \* \* \*

#### **Observations**

\* \* \* \* \*

[Add a new entry to read as follows:]

- As of July 1, 2021, the value-added tax (VAT) exemption is abolished. The country requires that the VAT must be declared and paid upon import. When the mailer pays the VAT, the electronically transmitted customs declaration data must include the VAT identification number.

\* \* \* \* \*

#### Bulgaria

##### Country Conditions for Mailing

\* \* \* \* \*

##### Observations

\* \* \* \* \*

[Add a new entry to read as follows (adding "1" before the first entry):]

- As of July 1, 2021, the value-added tax (VAT) exemption is abolished. The country requires that the VAT must be declared and paid upon import. When the mailer pays the VAT, the electronically transmitted customs declaration data must include the VAT identification number.

\* \* \* \* \*

#### Cyprus

##### Country Conditions for Mailing

\* \* \* \* \*

##### Observations

\* \* \* \* \*

[Add a new entry to read as follows (adding "1" before the first entry):]

- As of July 1, 2021, the value-added tax (VAT) exemption is abolished. The country requires that the VAT must be declared and paid upon import. When the mailer pays the VAT, the electronically transmitted customs declaration data must include the VAT identification number.

\* \* \* \* \*

#### Czech Republic

##### Country Conditions for Mailing

\* \* \* \* \*

##### Observations

\* \* \* \* \*

[Add a new entry to read as follows:]

- As of July 1, 2021, the value-added tax (VAT) exemption is abolished. The country requires that the VAT

must be declared and paid upon import. When the mailer pays the VAT, the electronically transmitted customs declaration data must include the VAT identification number.

\* \* \* \* \*

#### Denmark

##### Country Conditions for Mailing

\* \* \* \* \*

##### Observations

\* \* \* \* \*

[Add a new entry to read as follows:]

- As of July 1, 2021, the value-added tax (VAT) exemption is abolished. The country requires that the VAT must be declared and paid upon import. When the mailer pays the VAT, the electronically transmitted customs declaration data must include the VAT identification number.

\* \* \* \* \*

#### Finland

##### Country Conditions for Mailing

\* \* \* \* \*

##### Observations

\* \* \* \* \*

[Add a new entry to read as follows:]

- As of July 1, 2021, the value-added tax (VAT) exemption is abolished. The country requires that the VAT must be declared and paid upon import. When the mailer pays the VAT, the electronically transmitted customs declaration data must include the VAT identification number.

\* \* \* \* \*

#### France

##### Country Conditions for Mailing

\* \* \* \* \*

##### Observations

\* \* \* \* \*

[Add a new entry to read as follows:]

- As of July 1, 2021, the value-added tax (VAT) exemption is abolished. The country requires that the VAT must be declared and paid upon import. When the mailer pays the VAT, the electronically transmitted customs declaration data must include the VAT identification number.

\* \* \* \* \*

**Greece****Country Conditions for Mailing**

\* \* \* \* \*

**Observations**

\* \* \* \* \*

*[Add a new entry to read as follows:]*

5. As of July 1, 2021, the value-added tax (VAT) exemption is abolished. The country requires that the VAT must be declared and paid upon import. When the mailer pays the VAT, the electronically transmitted customs declaration data must include the VAT identification number.

\* \* \* \* \*

**Hungary****Country Conditions for Mailing**

\* \* \* \* \*

**Observations**

\* \* \* \* \*

*[Add a new entry to read as follows (adding numbers before the other entries):]*

4. As of July 1, 2021, the value-added tax (VAT) exemption is abolished. The country requires that the VAT must be declared and paid upon import. When the mailer pays the VAT, the electronically transmitted customs declaration data must include the VAT identification number.

\* \* \* \* \*

**Ireland****Country Conditions for Mailing**

\* \* \* \* \*

**Observations**

\* \* \* \* \*

*[Add a new entry to read as follows:]*

7. As of July 1, 2021, the value-added tax (VAT) exemption is abolished. The country requires that the VAT must be declared and paid upon import. When the mailer pays the VAT, the electronically transmitted customs declaration data must include the VAT identification number.

\* \* \* \* \*

**Italy****Country Conditions for Mailing**

\* \* \* \* \*

**Observations**

\* \* \* \* \*

*[Add a new entry to read as follows:]*

6. As of July 1, 2021, the value-added tax (VAT) exemption is abolished. The country requires that the VAT must be declared and paid upon import. When the mailer pays the VAT, the electronically transmitted customs declaration data must include the VAT identification number.

\* \* \* \* \*

**Lithuania****Country Conditions for Mailing**

\* \* \* \* \*

**Observations**

\* \* \* \* \*

*[Revise the current entry to read as follows:]*

As of July 1, 2021, the value-added tax (VAT) exemption is abolished. The country requires that the VAT must be declared and paid upon import. When the mailer pays the VAT, the electronically transmitted customs declaration data must include the VAT identification number.

\* \* \* \* \*

**Luxembourg****Country Conditions for Mailing**

\* \* \* \* \*

**Observations**

\* \* \* \* \*

*[Add a new entry to read as follows:]*

3. As of July 1, 2021, the value-added tax (VAT) exemption is abolished. The country requires that the VAT must be declared and paid upon import. When the mailer pays the VAT, the electronically transmitted customs declaration data must include the VAT identification number.

\* \* \* \* \*

**Malta****Country Conditions for Mailing**

\* \* \* \* \*

**Observations**

\* \* \* \* \*

*[Add a new entry to read as follows:]*

4. As of July 1, 2021, the value-added tax (VAT) exemption is abolished. The country requires that the VAT must be declared and paid upon import. When the

mailer pays the VAT, the electronically transmitted customs declaration data must include the VAT identification number.

\* \* \* \* \*

#### Netherlands

##### Country Conditions for Mailing

\* \* \* \* \*

##### Observations

\* \* \* \* \*

[Add a new entry to read as follows:]

- As of July 1, 2021, the value-added tax (VAT) exemption is abolished. The country requires that the VAT must be declared and paid upon import. When the mailer pays the VAT, the electronically transmitted customs declaration data must include the VAT identification number.

\* \* \* \* \*

#### Poland

##### Country Conditions for Mailing

\* \* \* \* \*

##### Observations

\* \* \* \* \*

[Add a new entry to read as follows (adding "1" before the first entry):]

- As of July 1, 2021, the value-added tax (VAT) exemption is abolished. The country requires that the VAT must be declared and paid upon import. When the mailer pays the VAT, the electronically transmitted customs declaration data must include the VAT identification number.

\* \* \* \* \*

#### Romania

##### Country Conditions for Mailing

\* \* \* \* \*

##### Observations

\* \* \* \* \*

[Revise the text to read as follows:]

As of July 1, 2021, the value-added tax (VAT) exemption is abolished. The country requires that the VAT must be declared and paid upon import. When the mailer pays the VAT, the electronically transmitted customs declaration data must include the VAT identification number.

\* \* \* \* \*

#### Slovak Republic (Slovakia)

##### Country Conditions for Mailing

\* \* \* \* \*

##### Observations

\* \* \* \* \*

[Add a new entry to read as follows:]

- As of July 1, 2021, the value-added tax (VAT) exemption is abolished. The country requires that the VAT must be declared and paid upon import. When the mailer pays the VAT, the electronically transmitted customs declaration data must include the VAT identification number.

\* \* \* \* \*

#### Slovenia

##### Country Conditions for Mailing

\* \* \* \* \*

##### Observations

\* \* \* \* \*

[Revise the text to read as follows:]

As of July 1, 2021, the value-added tax (VAT) exemption is abolished. The country requires that the VAT must be declared and paid upon import. When the mailer pays the VAT, the electronically transmitted customs declaration data must include the VAT identification number.

\* \* \* \* \*

#### Spain

##### Country Conditions for Mailing

\* \* \* \* \*

##### Observations

\* \* \* \* \*

[Add a new entry to read as follows:]

- As of July 1, 2021, the value-added tax (VAT) exemption is abolished. The country requires that the VAT must be declared and paid upon import. When the mailer pays the VAT, the electronically transmitted customs declaration data must include the VAT identification number.

\* \* \* \* \*

#### Sweden

##### Country Conditions for Mailing

\* \* \* \* \*

##### Observations

\* \* \* \* \*



[Revise the third entry to read as follows:]

3. As of July 1, 2021, the value-added tax (VAT) exemption is abolished. The country requires that the VAT must be declared and paid upon import. When the mailer pays the VAT, the electronically transmitted customs declaration data must include the VAT identification number.

\* \* \* \* \*

Although effective July 1, 2021, the Postal Service will incorporate these revisions into the next edition of the online IMM, which is available via Postal Explorer® at [pe.usps.com](https://pe.usps.com).

— Product Classification,  
Product Solutions, 7-1-21

## Publications

### Publication 22 Revision: Updates for Expedited Packaging Supplies

Effective June 2021, the Postal Service™ revised Publication 22, *Expedited Packaging Supplies*, to include the following updates:

- Added a section, “Shipping Hazardous Items,” to include information on using Expedited Packaging Supplies.
  - Deleted references to PS Form 4004-SP, *Specialized Packaging Order Form*, which has been discontinued and replaced by the National Customer Management System (NCMS) Expedited Packaging Supplies (EPS) Application for Specialized Packaging.
  - Added language to specify that the Postal Service sales representative must order Specialized Packaging by accessing the NCMS EPS Application for Specialized Packaging.
  - Added a section on Negotiated Service Agreements (NSAs). Sales must inform the Expedited Packaging Supplies Program when they are aware of an NSA for their customer. All Expedited Packaging Supplies (Standard, Specialized, or Customized) that the Postal Service provides to a customer are considered when the NSA is established.
  - Added a section on the Prepaid Priority Mail® Flat Rate Stamped Envelope with an image of the Priority Mail Prepaid Stamped Flat Rate Envelope.
  - Deleted references to Specialized Box #19, which has been discontinued due to not meeting the machineability criteria (12” x 12” x 15”).
- Moved the Expedited Packaging for Business Reply Mail (BRM) Use from the Standard Packaging section to the Specialized Packaging section.
  - Added language to specify that customers wishing to purchase packaging for BRM must qualify by purchasing at least \$75,000 for the annual cost of the envelopes. The Postal Service sales representative must order supplies for BRM use by accessing the NCMS EPS Application for Specialized Packaging.
  - Chapters 8 and 9 have been re-numbered as Chapter 8, “Box Styles,” and Chapter 9, “Returning Expedited Packaging Supplies.”
  - Added a section, “Quick Response Codes and Universal Product Codes barcodes.”
  - Updated images with graphics for current expedited packaging throughout the publication.

Revised Publication 22 is now available on the Postal Service PolicyNet website:

- Go to [blue.usps.gov](https://blue.usps.gov).
- In the left-hand column, click *Essential Links*, and then click *PolicyNet*.
- Go to the right-hand side under “Published Forms and Directives.”
- Click *Publications*.

The direct URL for the Postal Service PolicyNet website is [blue.usps.gov/cpim](https://blue.usps.gov/cpim).

— Shipping and Commerce Product Management,  
Business Solutions, 7-1-21

## Publication 223 Revision: Directives and Forms Update

Effective July 1, 2021, Publication 223, *Directives and Forms Catalog*, is revised to include current information for the items noted in this article.

See Chapter 1 of Publication 223 for information on how to order directives and forms. Publication 223 is available online at [about.usps.com/publications/pub223.pdf](https://about.usps.com/publications/pub223.pdf).

### New

- LAB 6183, *USPS Commercial Invoice for OCPI*.
- MI AS-510-2020-5, *Allocating and Renovating Headquarters Space*.
- MI AS-800-2021-1, *Azure Cloud Environment Security Policies and Blueprint*.
- MI AS-800-2021-3, *Third Party Cyber Risk Management*.
- MI EL-660-2020-2, *Gifts and Decorations from Foreign Governments*.
- MI FM-640-2021-1, *Verifying Payment Card Industry Compliance for Service Provider Engagement*.
- MOP FI-03-03-2021, *Policy Memo — Statistical Programs Letter #3, Fiscal Year (FY) 2021: CCCS, RCCS, TRACS, ODIS-RPW, and SPM*.
- PS 2976-C, *OCPI Customs Declaration*.
- PS 6183, *USPS Commercial Invoice for OCPI*.

### Reinstated

- MI EL-660-2020-1, *Financial Disclosure Reporting Procedures for the U.S. Postal Service*.
- PS 8139, *Your Role in Protecting the Security of the U.S. Mail*.

### Revised

- HBK AS-805, *Information Security*.
- HBK AS-805-A, *Information Resource Certification and Accreditation Process*.

- HBK AS-805-C, *Information Security Requirements for All Personnel*.
- HBK AS-805-D, *Information Security Network Connectivity Process*.
- HBK EL-380, *Postal Career Executive Service*.
- HBK EL-911, *Agreement between the United States Postal Service and National Postal Professional Nurses, 2017–2023*.
- HBK-PO 631, *Growth and Delivery Point Management Program*.
- MI EL-670-2018-4, *Providing Personal Assistance Services (PAS)*.
- MAN DMM, *Mailing Standards of the United States Postal Service, Domestic Mail Manual*.
- MAN ELM, *Employee and Labor Relations Manual*.
- MAN IMM, *Mailing Standards of the United States Postal Service, International Mail Manual*.
- PUB 181, *Join Our Team! Rural Carrier Associate*.
- PUB 223, *Directives and Forms Catalog*.
- PS 1360, *Information Security Incident Report*.
- PS 2976, *Customs Declaration CN 22 — Sender's Declaration*.
- PS 2976-A, *Customs Declarations and Dispatch Note — CP 72*.
- PS 2976-B, *Priority Mail Express International Shipping Label and Customs Form*.
- PS 3337-A, *Community Service Participation Pre-Event Evaluation*.
- PS 3650, *Request for Expedited Packaging for Business Reply Mail Use*.
- PS 3760, *Package Search Request*.

### Obsolete

PSIN	Ed. Date	Title	Replaced By
HBK F-17	4/98	<i>Making Field Disbursements Through the Accounts Payable System</i>	N/A
MI AS-510-2004-13	12/04	<i>Environmental Integration in the Construction Process</i>	N/A
MI FM-640-2020-3	3/20	<i>Verifying Payment Card Industry Compliance for Service Provider Engagement</i>	MI FM-640-2021-1
MI EL-660-2017-3	4/17	<i>Gifts and Decorations from Foreign Governments</i>	MI EL-660-2020-2
PS 128-B	5/90	<i>Officer's Identification Card (green card)</i>	N/A
PS 505	8/82	<i>Inspection Service Receipt (6-part set)</i>	N/A
PS 508	4/74	<i>Envelope for "M" Cases</i>	N/A
PS 521	8/87	<i>Equipment Repair (tag)</i>	N/A
PS 573	10/81	<i>Mailing Record</i>	N/A
PS 578	4/72	<i>Crime Laboratory Envelope</i>	N/A
PS 579	4/88	<i>Inspector's Miscellaneous Case (envelope)</i>	N/A
PS 582-S	11/92	<i>Handwriting Specimen (Spanish)</i>	N/A
PS 589	7/92	<i>Electronic Surveillance Summary Report (4-part set)</i>	N/A

<b>PSIN</b>	<b>Ed. Date</b>	<b>Title</b>	<b>Replaced By</b>
PS 616	12/85	<i>Description of Test Mail</i>	N/A
PS 695	1/85	<i>Inspection Service Exit Interview</i>	N/A
PS 699-A	11/93	<i>Inspection Service Job Description</i>	N/A
PS 714	8/96	<i>Evidence/Property Report (2-part set)</i>	N/A
PS 716	8/96	<i>United States Postal Inspection Service Destruction Certificate</i>	N/A
PS 717	8/96	<i>Currency Verification Sheet</i>	N/A
PS 718	8/96	<i>Property Room Access Control Log</i>	N/A
PS 719	8/96	<i>Custodian's Access Control Log</i>	N/A
PS 720	8/96	<i>Property/Evidence Log</i>	N/A
PS 720-A	8/96	<i>Property/Evidence Log (continuation)</i>	N/A
PS 809	3/97	<i>Mail Forwarding Order — Emergency Change of Address</i>	N/A
PS 810	10/90	<i>Safety Notification Card (postal card)</i>	N/A
PS 1357-A	1/87	<i>Request for Inspection Service Computer ID</i>	N/A
PS 1375	3/86	<i>Employee Identification Card</i>	N/A
PS 1503	2/88	<i>Claim for Abandoned Property</i>	N/A
PS 1513	11/88	<i>Notification of Criminal Monetary Imposition</i>	N/A
PS 1517-A	2/87	<i>Certificate of Transfer of Ownership — Motor Vehicle (card)</i>	N/A
PS 1628	10/85	<i>Individual Key Record (card)</i>	N/A
PS 1629	6/72	<i>Building Keys Inventory</i>	N/A
PS 2022	6/91	<i>Key Inventory Record</i>	N/A
PS 2026-QD	8/92	<i>Personal History Data — QD</i>	N/A
PS 2027	6/88	<i>Burglary Report (4 pages)</i>	N/A
PS 2041-C	12/82	<i>Temporary Employee's Building Pass</i>	N/A
PS 2043	6/96	<i>Credential Control Record (3-part set)</i>	N/A
PS 2108-A	11/73	<i>Notice of Contract Costs Suspended and/or Disapproved (continuation)</i>	N/A
PS 2162	2/80	<i>Burglary and Robbery Countermeasures Program</i>	N/A
PS 2205	6/80	<i>Court Request</i>	N/A
PS 2693	7/89	<i>Personnel Questionnaire</i>	N/A
PS 2697	3/88	<i>Transmittal for Copy of Stolen Treasury Checks (3-part set)</i>	N/A
PS 4098-F	10/85	<i>Employee Identification (Face) (card)</i>	N/A
PS 4098-R	10/85	<i>Employee Identification (Reverse) (card)</i>	N/A
PS 7526	10/95	<i>Weapon Inspection Maintenance Record (card)</i>	N/A
PS 7532	6/88	<i>Robbery Report</i>	N/A
PS 7534	6/88	<i>CON-CON or Coded Shipment Loss Report</i>	N/A
PS 7540	4/87	<i>Firearms Permit (card)</i>	N/A
PS 8025	2/89	<i>Consensual Electronic Surveillance Request</i>	N/A
PS 8150-S	9/98	<i>Reporte de Irregularidades en el Manejo del Correo Global</i>	N/A
PS 8165	8/19	<i>U.S. Postal Inspection Service Mail Fraud Report</i>	N/A

## Publication 431 Revision: Changes to Post Office Box Service and Caller Service Fee Groups

Effective July 1, 2021, Publication 431, *Post Office Box Service and Caller Service Fee Groups*, is revised to include the following changes.

### Publication 431, *Post Office Box Service and Caller Service Fee Groups*

\* \* \* \* \*

[Delete the following entries:]

ZIP Code	Fee Group
33906B	33
44408B	34

\* \* \* \* \*

The online version of Publication 431 is dated July 2013. Publication 431 is currently available on the Postal Service™ PolicyNet website ([blue.usps.gov/cpim](http://blue.usps.gov/cpim)):

- Go to [blue.usps.gov](http://blue.usps.gov).
- In the left-hand column, click *Essential Links*, and then click *PolicyNet*.
- Go to the right-hand side under “Published Forms and Directives.”
- Click *Publications*.

Offices with WebBATS Manager/Supervisor access can view current Publication 431 information by going to the WebBATS Edit Facility Information page, as follows:

1. Go to the WebBATS main menu, and select Utility> Facility>Edit Facility option.
2. View the Fee Group field on the Edit Facility Information page.

— *Post Office Operations,  
Retail and Post Office Operations, 7-1-21*

# Organization Information

## Environmental Management

### Compliance Reminder: Refrigerant Management

When released, refrigerants can harm the environment. Refrigerant-containing equipment at Postal Service™ sites must be managed in accordance with Postal Service and regulatory requirements. Potential equipment includes:

- Chillers,
- Air conditioners,
- Fire suppression systems,
- Drinking fountains,
- Refrigerators, and
- Freezers.

Requirements apply to both Postal Service employees and contractors performing maintenance on USPS® equipment, as well as training, handling, recordkeeping, and disposal.

#### Refrigerant Management Requirements

- Never vent or otherwise release any refrigerants into the atmosphere for any reason.
- Maintain required documentation:
  - An inventory of refrigerant-containing equipment at the site.
  - Records of system maintenance, service, and repair, particularly those documenting refrigerant addition or removal. Sites must obtain and maintain records from contractors who service refrigerant-containing equipment. Contractor records need to show the work that was done, not just contractor hours on site.
  - Individual service logs and annual leak rate calculations for systems containing more than 50 pounds of refrigerants.
  - Training records.
- Investigate refrigerant leaks and repair leaking equipment.
- Complete required training and obtain Environmental Protection Agency (EPA) technician certification, if applicable:
  - Employees that maintain, service, or repair refrigerant-containing equipment must be certified.
  - Employees that purchase refrigerants may require certification.
- Manage refrigerant storage cylinders properly:
  - Store in a centralized, secure location that is restricted to authorized employees.
  - Purchase and use cylinders that are certified by the Air-Conditioning, Heating, and Refrigeration Institute and Underwriters Laboratories.
  - Clearly label refrigerant cylinders to identify their contents.
  - Document each cylinder purchase.
- Dispose of refrigerants, refrigerant-containing equipment, and cylinders properly:
  - **Refrigerant equipment.** Evacuate refrigerants and tag equipment as empty. Use a local waste management or scrap vendor for disposal and keep disposal records.
  - **Refrigerants/Refrigerant-containing cylinders.** Recycle waste refrigerants using a local, EPA-approved reclaimer. Keep records of off-site shipments. Never send refrigerants for disposal and never mix refrigerant types in the same cylinder.
  - **Empty refrigerant cylinders.** Label as “Empty” and recycle with other steel recyclables at local steel recycling center. Never reuse non-refillable cylinders.

For more information, consult your designated USPS environmental contact at [blue.usps.gov/sustainability/contact.htm](https://blue.usps.gov/sustainability/contact.htm) or review the following documents:

- *Refrigerant Management Environmental Compliance Bulletin* at [blue.usps.gov/sustainability/environmental/\\_pdf/ecb-refrigerant-management.pdf](https://blue.usps.gov/sustainability/environmental/_pdf/ecb-refrigerant-management.pdf).
- *National Refrigerant Management Policies and NSProcedures Maintenance Management Order (MMO-056-20)* at [mtsc.usps.gov/pdf/MMO/2020/MMO05620.pdf](https://mtsc.usps.gov/pdf/MMO/2020/MMO05620.pdf).

— *Environmental Affairs and Corporate Sustainability, Corporate Affairs, 7-1-21*

## USPS Stormwater Policy Reminder: Vehicle Washing

The United States Postal Service® (USPS®) has established policies to reduce pollution from stormwater and snowmelt, which can cause hazardous chemicals and pollutants to enter the environment and harm rivers, streams, lakes, and coastal waters. These policies require employees and suppliers to take specific actions to minimize pollution and protect water quality.

USPS has a “Zero Discharge” policy for stormwater. This means USPS or USPS third-party contractors cannot release or discharge pollutants (i.e., oil and grease, metals, acids/bases, or other such chemicals) into stormwater systems. This policy includes preventing vehicle wash water from entering stormwater drains.

Vehicle washing must be conducted inside vehicle wash bays at Postal Service™ vehicle maintenance facilities (VMF) or conducted outside by third-party vehicle washing suppliers that use approved zero discharge washing methods. Sites that do not have an available VMF or third-party vehicle washing supplier must use either an on-site dry-

wash/waxing process or take the vehicle to an off-site car wash facility to ensure compliance with environmental requirements.

Postal Service sites using third-party vehicle washing services must establish contracts through the Vehicles, Delivery, and Industrial Equipment Category Management Center (CMC) using the nationally-approved statement of work for vehicle washing. Contracts established through the CMC require suppliers who wash vehicles to use either a dry wipe process or a wet wash that collects and contains wash water for proper off-site management.

To establish a vehicle washing contract for your location, contact Carla Van Istendal by email at [carla.vanistendal@usps.gov](mailto:carla.vanistendal@usps.gov) or by phone at 215-863-5397.

For more information, refer to the *Vehicle Washing Requirements Environmental Compliance Bulletin* at [blue.usps.gov/sustainability/environmental/\\_pdf/ecb-vehiclewashing.pdf](https://blue.usps.gov/sustainability/environmental/_pdf/ecb-vehiclewashing.pdf).

— *Environmental Affairs and Corporate Sustainability,  
Corporate Affairs, 7-1-21*

## Finance

### Equipment Maintenance Allowance Schedule for Rural Routes

#### Rural Carriers

In accordance with the provisions of Article 9, section 2.J.3 of Handbook EL-902, *Agreement Between the United States Postal Service and the National Rural Letter Carriers' Association*, effective July 3, 2021 (pay period 15-21), the equipment maintenance allowance (EMA) will increase to 80.5 cents per mile, or a minimum of \$32.20 per day, whichever is greater.

#### **Auxiliary Rural Carriers, Rural Carrier Reliefs, Rural Carrier Associates, Rural Carrier Part-Time Flexibles, and Auxiliary Assistance**

Employees providing auxiliary assistance or serving auxiliary routes under the provisions of Article 9, section 2.J.5, receive an EMA of 80.5 cents per mile or \$8.65 per hour, whichever is greater. This EMA must not exceed the amount provided in the special equipment maintenance allowance for the route stops and miles.

#### **EMA Rate Schedule**

The EMA rate schedule on pages [15](#) and [16](#) supersedes all previously published EMA schedules for employees receiving EMA.

— *Collective Bargaining and Arbitration,  
Labor Relations, 7-1-21*



EMA Rate Schedule (page 2 of 2)

USPS 26-9902  
MINNEAPOLIS ISC  
REPORT AAQ530P1

RURAL EQUIPMENT MAINTENANCE

DATE 06-15-21  
PAGE 2

R A T E S C H E D U L E  
EFFECTIVE PP-YR 15-21

BASED ON \$0.805 PER MILE

MILES STOPS = \*0640\*\*0660\*\*0680\*\*0700\*\*0720\*\*0740\*\*0760\*\*0780\*\*0800\*\*0820\*\*0840\*\*0860\*\*0880\*\*0900\*\*0920\*\*0940\*\*0960\*\*0980\*\*1000

8	33.70	33.80	33.90	34.00	34.10	34.20	34.30	34.40	34.50	34.60	34.70	34.80	34.90	35.00	35.10	35.20	35.30	35.40	35.50	35.60	35.70	35.80	35.90	36.00	36.10	36.20	36.30	36.40	36.50	36.60	36.70	36.80	36.90	37.00	37.10	37.20
9	33.80	33.90	34.00	34.10	34.20	34.30	34.40	34.50	34.60	34.70	34.80	34.90	35.00	35.10	35.20	35.30	35.40	35.50	35.60	35.70	35.80	35.90	36.00	36.10	36.20	36.30	36.40	36.50	36.60	36.70	36.80	36.90	37.00	37.10	37.20	
10	33.90	34.00	34.10	34.20	34.30	34.40	34.50	34.60	34.70	34.80	34.90	35.00	35.10	35.20	35.30	35.40	35.50	35.60	35.70	35.80	35.90	36.00	36.10	36.20	36.30	36.40	36.50	36.60	36.70	36.80	36.90	37.00	37.10	37.20		
11	34.00	34.10	34.20	34.30	34.40	34.50	34.60	34.70	34.80	34.90	35.00	35.10	35.20	35.30	35.40	35.50	35.60	35.70	35.80	35.90	36.00	36.10	36.20	36.30	36.40	36.50	36.60	36.70	36.80	36.90	37.00	37.10	37.20			
12	34.10	34.20	34.30	34.40	34.50	34.60	34.70	34.80	34.90	35.00	35.10	35.20	35.30	35.40	35.50	35.60	35.70	35.80	35.90	36.00	36.10	36.20	36.30	36.40	36.50	36.60	36.70	36.80	36.90	37.00	37.10	37.20				
13	34.20	34.30	34.40	34.50	34.60	34.70	34.80	34.90	35.00	35.10	35.20	35.30	35.40	35.50	35.60	35.70	35.80	35.90	36.00	36.10	36.20	36.30	36.40	36.50	36.60	36.70	36.80	36.90	37.00	37.10	37.20					
14	34.30	34.40	34.50	34.60	34.70	34.80	34.90	35.00	35.10	35.20	35.30	35.40	35.50	35.60	35.70	35.80	35.90	36.00	36.10	36.20	36.30	36.40	36.50	36.60	36.70	36.80	36.90	37.00	37.10	37.20						
15	34.40	34.50	34.60	34.70	34.80	34.90	35.00	35.10	35.20	35.30	35.40	35.50	35.60	35.70	35.80	35.90	36.00	36.10	36.20	36.30	36.40	36.50	36.60	36.70	36.80	36.90	37.00	37.10	37.20							
16	34.50	34.60	34.70	34.80	34.90	35.00	35.10	35.20	35.30	35.40	35.50	35.60	35.70	35.80	35.90	36.00	36.10	36.20	36.30	36.40	36.50	36.60	36.70	36.80	36.90	37.00	37.10	37.20								
17	34.60	34.70	34.80	34.90	35.00	35.10	35.20	35.30	35.40	35.50	35.60	35.70	35.80	35.90	36.00	36.10	36.20	36.30	36.40	36.50	36.60	36.70	36.80	36.90	37.00	37.10	37.20									
18	34.70	34.80	34.90	35.00	35.10	35.20	35.30	35.40	35.50	35.60	35.70	35.80	35.90	36.00	36.10	36.20	36.30	36.40	36.50	36.60	36.70	36.80	36.90	37.00	37.10	37.20										
19	34.80	34.90	35.00	35.10	35.20	35.30	35.40	35.50	35.60	35.70	35.80	35.90	36.00	36.10	36.20	36.30	36.40	36.50	36.60	36.70	36.80	36.90	37.00	37.10	37.20											
20	34.90	35.00	35.10	35.20	35.30	35.40	35.50	35.60	35.70	35.80	35.90	36.00	36.10	36.20	36.30	36.40	36.50	36.60	36.70	36.80	36.90	37.00	37.10	37.20												
21	35.00	35.10	35.20	35.30	35.40	35.50	35.60	35.70	35.80	35.90	36.00	36.10	36.20	36.30	36.40	36.50	36.60	36.70	36.80	36.90	37.00	37.10	37.20													
22	35.10	35.20	35.30	35.40	35.50	35.60	35.70	35.80	35.90	36.00	36.10	36.20	36.30	36.40	36.50	36.60	36.70	36.80	36.90	37.00	37.10	37.20														
23	35.20	35.30	35.40	35.50	35.60	35.70	35.80	35.90	36.00	36.10	36.20	36.30	36.40	36.50	36.60	36.70	36.80	36.90	37.00	37.10	37.20															
24	35.30	35.40	35.50	35.60	35.70	35.80	35.90	36.00	36.10	36.20	36.30	36.40	36.50	36.60	36.70	36.80	36.90	37.00	37.10	37.20																
25	35.40	35.50	35.60	35.70	35.80	35.90	36.00	36.10	36.20	36.30	36.40	36.50	36.60	36.70	36.80	36.90	37.00	37.10	37.20																	
26	35.50	35.60	35.70	35.80	35.90	36.00	36.10	36.20	36.30	36.40	36.50	36.60	36.70	36.80	36.90	37.00	37.10	37.20																		
27	35.60	35.70	35.80	35.90	36.00	36.10	36.20	36.30	36.40	36.50	36.60	36.70	36.80	36.90	37.00	37.10	37.20																			
28	35.70	35.80	35.90	36.00	36.10	36.20	36.30	36.40	36.50	36.60	36.70	36.80	36.90	37.00	37.10	37.20																				
29	35.80	35.90	36.00	36.10	36.20	36.30	36.40	36.50	36.60	36.70	36.80	36.90	37.00	37.10	37.20																					
30	35.90	36.00	36.10	36.20	36.30	36.40	36.50	36.60	36.70	36.80	36.90	37.00	37.10	37.20																						
31	36.00	36.10	36.20	36.30	36.40	36.50	36.60	36.70	36.80	36.90	37.00	37.10	37.20																							
32	36.10	36.20	36.30	36.40	36.50	36.60	36.70	36.80	36.90	37.00	37.10	37.20																								
33	36.20	36.30	36.40	36.50	36.60	36.70	36.80	36.90	37.00	37.10	37.20																									
34	36.30	36.40	36.50	36.60	36.70	36.80	36.90	37.00	37.10	37.20																										
35	36.40	36.50	36.60	36.70	36.80	36.90	37.00	37.10	37.20																											
36	36.50	36.60	36.70	36.80	36.90	37.00	37.10	37.20																												
37	36.60	36.70	36.80	36.90	37.00	37.10	37.20																													
38	36.70	36.80	36.90	37.00	37.10	37.20																														
39	36.80	36.90	37.00	37.10	37.20																															
40	36.90	37.00	37.10	37.20																																
41	37.00	37.10	37.20																																	
42	37.10	37.20																																		
43	37.20																																			



## Human Resources

### Burn Notice: UV Safety Awareness Month

July is UV Safety Awareness Month, a time to learn more about sun and skin protection. Ultraviolet (UV) radiation is emitted naturally by the sun, as well as through artificial sources, such as tanning beds and different forms of lighting. It has some benefits — such as providing Vitamin D — but it also poses many health risks.

Invisible UV rays can damage anyone's skin in 15 minutes, causing sunburn, skin aging, eye damage, and skin cancer, the most common cancer in the United States.

To reduce your risk:

- Apply sunscreen regularly, even on cloudy or cool days.
- Seek shade under an umbrella, tree, or shelter for relief.
- Wear clothing to cover skin exposed to sun, including long-sleeve shirts and pants, hats with brims all the way around, and sunglasses.
- Limit your time in the sun, especially between 10 A.M. and 2 P.M., when the sun's rays are most intense.

Sunscreens use a sun protection factor (SPF) number that indicate their effectiveness for blocking UV rays. Higher numbers offer more protection. Everyone should use a broad-spectrum sunscreen with SPF 15 or higher.

Read sunscreen labels for proper application instructions and apply sunscreen liberally to all uncovered skin.

Reapply at least every two hours and use more often if you are swimming or sweating. No sunscreen is completely waterproof or blocks all UV radiation, so reapply and take other precautions, such as wearing protective clothing.

For more information about sun safety, visit the following sites:

- Centers for Disease Control and Prevention at [cdc.gov/nceh/features/uv-radiation-safety/index.html](https://www.cdc.gov/nceh/features/uv-radiation-safety/index.html).
- Food and Drug Administration at [fda.gov/consumers/consumer-updates/tips-stay-safe-sun-sunscreen-sunglasses](https://www.fda.gov/consumers/consumer-updates/tips-stay-safe-sun-sunscreen-sunglasses).
- USPS® Wellness LiteBlue page at [liteblue.usps.gov/humanresources/benefits/health-wellness/welcome.shtml](https://liteblue.usps.gov/humanresources/benefits/health-wellness/welcome.shtml).

— *Benefits and Wellness,*  
*Human Resources, 7-1-21*

# UV Safety Awareness Month



Ultraviolet (UV) radiation is emitted naturally by the sun. Invisible UV rays can damage anyone's skin in 15 minutes, causing sunburn, skin aging, eye damage, and skin cancer.

## To Reduce Your Risk:

- Apply sunscreen of SPF 15 or higher regularly. Reapply at least every two hours.
- Seek shade under an umbrella, tree, or shelter for relief.
- Wear light-colored and light-weight clothing to cover exposed skin.
- Don't forget to protect your eyes. Wear sunglasses with UV protection.
- Limit your time in the sun. The sun's rays are usually more intense between 10 a.m. and 2 p.m.

Sources: [www.cdc.gov](http://www.cdc.gov), [www.fda.gov](http://www.fda.gov)



# Pull-Out Information

## Fraud

### Invalid USPS Corporate Account Numbers

Provide this listing to Contract Postal Units and acceptance clerks in non-POS locations without intranet access to validate a USPS Corporate Account (USPSCA) number online. For all other locations, online USPSCA validation is preferred. This list supersedes all previous notices, which you must recycle.

Acceptance clerks must not accept Priority Mail Express® shipments bearing an invalid USPSCA number in the "Payment by Account" or "Agreement Number" section of the label or form.

**Note:** The first 6 digits of a 9-digit Custom Designed Service and Next Day Pickup Agreement make up the Corporate Account Number.

005003	005844	071054	115155	115539	117078	118242	119408	334175	489480	731036	799222	980755
005019	005860	071245	115187	115545	117090	118257	119471	336294	489493	731051	799283	980878
005090	005929	075017	115202	115559	117110	118321	119501	340593	496075	731342	799290	981455
005099	005936	075511	115206	115566	117136	118371	119533	341002	496203	731457	799313	981663
005106	005978	080051	115207	115604	117144	118390	119541	344021	496205	731881	804219	981674
005127	007219	080544	115209	115606	117153	118475	119551	344039	496207	735022	820100	981892
005131	008003	088001	115211	115621	117158	118531	119588	370013	496209	740141	824007	982306
005142	008093	100640	115217	115730	117236	118689	119598	462562	497311	740356	836907	982429
005168	008154	105361	115230	115732	117271	118810	119655	464189	497315	740525	852594	982526
005260	008185	108245	115232	115756	117308	118846	129908	480090	497317	740992	853865	982548
005268	008198	115014	115244	115785	117390	118866	152046	481233	498100	740993	902285	982604
005313	008296	115016	115248	115888	117424	118883	152101	481516	528014	741136	913790	982615
005315	008360	115021	115254	115938	117446	118931	156221	481600	554064	741150	914101	982631
005341	008445	115022	115261	115959	117473	118943	174053	483464	581081	741269	915622	982662
005362	008474	115039	115285	117002	117524	118966	178059	483952	600556	741358	917104	982672
005412	008479	115045	115289	117008	117530	119034	178074	484050	606440	741536	917196	982702
005443	008561	115046	115300	117017	117538	119048	191370	486276	607377	741628	920217	985214
005512	008689	115051	115306	117019	117598	119072	192390	486344	608128	741639	921883	985241
005514	008913	115053	115322	117021	117688	119084	207595	486345	608239	744079	927057	988054
005519	009523	115074	115324	117024	117759	119099	301521	486348	617208	750066	939052	992775
005525	015397	115081	115345	117038	117772	119105	303523	486351	641616	751175	950138	995144
005555	020299	115086	115351	117040	117795	119148	320011	487282	641776	752002	950621	995439
005559	022176	115093	115357	117041	117918	119151	320014	487284	681149	758010	951360	995461
005625	023437	115103	115372	117044	117977	119153	322001	488025	685309	761003	968452	995586
005627	028004	115107	115393	117052	118031	119163	322993	488048	701002	765622	970359	995787
005639	061294	115128	115416	117058	118043	119208	323132	488052	708402	767567	970835	997083
005667	064138	115130	115472	117059	118051	119220	325128	488057	730120	782005	971028	997179
005717	064600	115132	115483	117061	118052	119234	329001	488061	730131	787171	973208	998003
005758	069804	115137	115494	117069	118172	119241	329021	488063	730400	788036	975038	998100
005762	070644	115146	115514	117071	118197	119289	330055	488065	730734	797033	980135	998150
005800	070992	115152	115515	117072	118225	119331	330760	488066	730788	799030	980615	

## Missing, Lost, or Stolen U.S. Money Order Forms

### Do Not Cash — Upon Receipt, Notify Local Postal Inspectors

Provide this listing to all Postal Service™ employees responsible for accepting and cashing postal money orders. Destroy all interim notices when the numbers listed appear in the *Postal Bulletin*. The new money order serial

numbers consist of the first 10 digits. The eleventh digit is a check digit only.

Do not cash outdated money orders **104 151 601 to 692 600 000**. Advise holders to send invalid money orders to Canada Post Corporation, Ottawa, Canada K1A 0B1. Check for altered dollar amounts by holding money orders to the light.

<b>010 001 0200</b>	to	<b>0299</b>	043 205 5922	to	5999	083 784 8886	to	8899	174 281 9347	to	9399
010 504 1932	to	1999	044 087 3457	to	3499	083 913 6915	to	6999	175 251 2600	to	0699
011 582 1889	to	1899	044 087 4000	to	4099	084 478 3920	to	3999	176 281 7937	to	7950
011 588 2900	to	3099	044 226 2487	to	2512	086 000 8271	to	8299	176 281 7963	to	7999
012 441 0784	to	0799	044 306 4200	to	4299	086 798 3840	to	3849	176 731 6586	to	6599
012 579 5675	to	5699	044 306 4370	to	4599	088 404 4472	to	4499	178 254 5000	to	9999
013 289 6176	to	6199	045 524 4121	to	4298	088 404 5584	to	5699	178 881 9900	to	9999
013 610 0014	to	0099	046 800 9870	to	9899	088 757 8688	to	8699	<b>180 031 2089</b>	to	<b>2098</b>
014 932 1000	to	1099	047 352 4000	to	4099	088 757 9400	to	9499	180 403 7723	to	7741
014 972 0800	to	0899	048 383 7650	to	7659	089 358 2248	to	2257	180 428 4580	to	0599
015 363 0065	to	0099	048 396 3647	to	3699	<b>090 663 9678</b>	to	<b>9684</b>	182 368 7544	to	0599
017 028 3200	to	3299	<b>051 142 0755</b>	to	<b>0799</b>	091 818 0071	to	0099	182 475 3229	to	3258
018 569 5333	to	5399	051 774 8857	to	8899	093 106 9346	to	9355	182 475 3904	to	7741
018 986 5264	to	5299	051 781 2875	to	2885	093 203 0500	to	0599	182 631 0031	to	0099
019 518 2814	to	2899	051 977 7010	to	7023	093 684 3630	to	3699	182 911 6539	to	6600
020 698 5159	to	5199	052 058 7115	to	7199	094 081 5074	to	5099	184 218 2760	to	2799
<b>020 844 7307</b>	to	<b>7399</b>	054 450 1130	to	1167	094 216 2555	to	2599	185 828 1474	to	1499
020 972 8948	to	8999	057 670 0563	to	0599	094 580 7062	to	7099	186 132 7583	to	0599
022 021 9110	to	9181	058 187 3836	to	3899	094 639 4200	to	4299	186 629 0589	to	0599
022 037 1411	to	1499	058 523 3003	to	3099	095 070 7186	to	7199	187 184 6177	to	0199
022 527 9201	to	9210	058 591 1153	to	1299	095 076 8300	to	8399	187 323 8200	to	8299
022 529 1882	to	1899	058 895 3746	to	3799	095 354 6864	to	6899	187 441 6080	to	6099
023 637 7169	to	7199	059 986 0814	to	0899	097 224 1350	to	1599	188 831 6774	to	6799
024 380 4100	to	4199	<b>060 406 7650</b>	to	<b>7699</b>	<b>100 160 3800</b>	to	<b>3899</b>	188 835 6370	to	6399
024 496 6870	to	6896	063 491 8122	to	8199	104 667 6400	to	6499	189 083 1064	to	1099
025 092 0987	to	0999	063 916 9968	to	9999	104 876 8937	to	8999	189 660 9583	to	9599
025 369 5535	to	5599	064 091 4500	to	4599	112 049 4413	to	4499	<b>191 179 0377</b>	to	<b>0399</b>
025 729 1151	to	1199	065 170 0471	to	0499	112 870 9765	to	9799	192 050 5762	to	5781
025 729 1643	to	1799	065 255 7909	to	7999	113 319 2000	to	2099	194 456 8600	to	0699
026 492 3180	to	3199	065 392 6345	to	6399	114 402 3850	to	3899	195 194 6881	to	6899
027 361 0430	to	0499	066 099 2014	to	2099	114 866 5368	to	5397	195 874 1112	to	1199
027 369 4482	to	4495	066 648 2880	to	2899	116 154 2800	to	2899	196 979 0524	to	0599
027 671 8762	to	8776	066 787 3639	to	3699	116 986 4400	to	4499	197 244 6100	to	6199
027 787 9886	to	9899	066 845 7500	to	9999	117 175 1647	to	5169	197 244 6300	to	6399
027 965 9487	to	9499	067 093 3869	to	3899	117 951 4687	to	4699	197 244 6400	to	6499
028 100 8069	to	8099	068 895 0334	to	0399	117 951 5200	to	5299	197 244 6500	to	6599
028 191 1852	to	1999	<b>070 724 4488</b>	to	<b>4499</b>	119 786 3051	to	3064	197 244 6600	to	6699
028 850 3000	to	3199	070 841 9181	to	9199	119 815 8961	to	6199	197 244 6700	to	6799
029 510 1500	to	1599	070 844 2546	to	2599	119 850 7400	to	7499	197 244 6800	to	8999
<b>030 687 0903</b>	to	<b>0999</b>	070 916 1340	to	1399	119 850 7700	to	7999	198 285 2556	to	2566
030 701 3442	to	3499	071 047 5768	to	5799	<b>121 634 0460</b>	to	<b>0499</b>	199 105 0778	to	0799
031 077 4507	to	4799	071 179 9800	to	9899	122 451 9879	to	9899	199 678 2968	to	2999
032 295 7500	to	9999	071 386 3682	to	3699	122 714 6805	to	6900	<b>202 748 5133</b>	to	<b>5199</b>
034 394 1000	to	1099	071 507 6840	to	6899	124 916 0304	to	0499	202 748 5245	to	5299
034 943 0400	to	0799	072 045 9641	to	9699	126 423 0136	to	0169	202 748 5300	to	5399
035 035 4337	to	4399	072 675 8287	to	8299	127 500 2328	to	2399	202 748 5400	to	5499
037 312 7500	to	7599	073 763 0867	to	0876	<b>160 901 2254</b>	to	<b>2299</b>	203 256 1240	to	1299
037 706 9578	to	9599	073 763 0878	to	0887	161 103 6581	to	6599	204 230 3577	to	3595
037 805 3677	to	3699	073 763 0889	to	0898	161 194 2857	to	0899	205 019 0174	to	0199
037 909 5490	to	5499	077 617 5481	to	5499	162 032 4447	to	4499	206 936 3184	to	3199
037 931 4660	to	4699	077 999 4001	to	4090	163 257 1085	to	1099	207 196 9900	to	9999
039 145 6521	to	6595	078 174 4475	to	4499	164 359 2406	to	2499	207 204 0700	to	0799
<b>040 024 3901</b>	to	<b>3999</b>	078 219 4931	to	4999	166 101 1433	to	1499	207 204 0800	to	0899
040 674 7100	to	7199	078 250 4756	to	4799	167 555 5201	to	5212	207 514 3857	to	3899
040 688 8816	to	8899	078 823 8312	to	8399	167 555 5214	to	5299	208 556 4707	to	4799
041 299 6752	to	6799	079 374 0300	to	2499	169 618 6274	to	6299	<b>210 057 4038</b>	to	<b>4047</b>
041 623 8889	to	8899	079 807 2342	to	2399	<b>171 806 6878</b>	to	<b>6893</b>	210 221 0548	to	0599
041 803 6565	to	6599	<b>082 721 0228</b>	to	<b>0254</b>	173 639 4685	to	4699	214 061 4711	to	4724
043 129 1968	to	1997	083 140 5000	to	7499	174 238 2779	to	2799	214 303 6311	to	6325

214 303 6239	to	6258	252 469 2125	to	2199	258 405 6400	to	6499	262 337 4500	to	4599
214 877 4251	to	4273	252 833 3286	to	3297	258 405 6800	to	6899	262 337 4600	to	4699
215 252 3918	to	3992	253 470 3948	to	3999	258 405 6900	to	6999	262 337 4700	to	4799
<b>217 585 1400</b>	<b>to</b>	<b>1499</b>	253 565 7400	to	7499	258 405 7000	to	7099	262 337 4800	to	4899
218 698 2157	to	2199	254 252 2800	to	2899	258 405 7100	to	7199	262 337 4900	to	4999
218 746 0800	to	0899	254 252 2900	to	2999	258 405 7200	to	7299	262 337 5000	to	5099
219 095 0100	to	0399	254 252 3000	to	3099	258 405 7300	to	7399	262 337 5100	to	5199
219 389 1885	to	1899	254 252 3100	to	3199	258 405 7400	to	7499	262 337 5200	to	5299
219 568 7435	to	7456	254 252 3200	to	3299	258 405 7800	to	7899	262 337 5300	to	5399
219 568 7469	to	7487	254 252 3300	to	3399	258 405 7900	to	7999	262 337 5400	to	5499
<b>221 316 5757</b>	<b>to</b>	<b>5799</b>	254 252 3400	to	3499	258 405 8000	to	8099	262 337 5500	to	5599
223 476 3914	to	3999	254 252 3500	to	3599	258 405 8100	to	8199	262 337 5600	to	5699
223 565 4921	to	4957	254 252 3600	to	3699	258 405 8200	to	8299	262 337 5700	to	5799
223 565 4979	to	4999	254 252 3700	to	3799	258 405 8300	to	8399	262 337 5800	to	5899
224 636 4745	to	4765	254 252 3800	to	3899	258 405 8400	to	8499	262 337 5900	to	5999
224 636 4776	to	4799	254 252 3900	to	3999	258 405 8500	to	8599	262 337 6000	to	6099
224 636 4855	to	4885	254 252 4000	to	4099	258 405 8600	to	8699	262 337 6100	to	6199
224 636 4932	to	4948	254 252 4100	to	4199	258 405 8700	to	8799	262 337 6200	to	6299
224 636 4950	to	4962	254 252 4200	to	4299	258 405 8800	to	8899	262 337 6300	to	6399
224 636 4985	to	4999	254 252 4300	to	4399	258 405 8900	to	8999	262 337 6400	to	6499
224 723 0757	to	0799	254 252 4400	to	4499	258 405 9600	to	9699	262 337 6500	to	6599
224 730 2207	to	2299	254 252 4500	to	4599	258 405 9700	to	9799	262 337 6600	to	6699
225 970 0500	to	0599	254 252 4600	to	4699	258 405 9800	to	9899	262 337 6700	to	6799
225 970 0600	to	0699	254 252 4700	to	4799	258 405 9900	to	9999	262 337 6800	to	6899
225 970 0700	to	0799	254 252 4800	to	4899	259 014 9989	to	9999	262 337 6900	to	6999
227 033 8679	to	8699	254 252 4900	to	4999	259 062 4788	to	4798	262 337 7000	to	7099
227 275 9400	to	9999	254 565 7607	to	7700	259 218 1400	to	1499	262 337 7100	to	7199
228 463 2456	to	2499	254 907 1203	to	1299	259 218 1500	to	1599	262 337 7200	to	7299
228 510 4852	to	4899	255 185 9527	to	9599	259 218 1600	to	1699	262 337 7300	to	7399
229 462 8451	to	8475	255 397 1557	to	1576	259 590 5654	to	5699	262 337 7400	to	7499
229 668 5977	to	5999	255 425 2989	to	2998	259 670 8268	to	8299	262 337 7500	to	7599
229 923 9176	to	9199	255 728 6412	to	6499	259 835 6238	to	6399	262 337 7600	to	7699
229 924 6696	to	6699	255 728 9842	to	9899	259 835 6701	to	6799	262 337 7700	to	7799
<b>230 051 9500</b>	<b>to</b>	<b>9999</b>	256 134 9833	to	9839	<b>260 224 4600</b>	<b>to</b>	<b>4699</b>	262 337 7800	to	7899
236 366 2431	to	2499	256 134 9840	to	9849	260 224 5941	to	5999	262 337 7900	to	7999
236 607 6882	to	6899	256 134 9850	to	9859	260 310 2821	to	2899	262 337 8000	to	8099
236 660 5853	to	5872	256 134 9860	to	9869	260 452 0010	to	0022	262 337 8100	to	8199
239 322 5200	to	5299	256 134 9870	to	9879	260 452 0049	to	4299	262 337 8200	to	8299
239 322 5400	to	5499	256 134 9880	to	9889	260 553 8200	to	8299	262 337 8300	to	8399
239 322 5600	to	5699	256 134 9890	to	9899	260 553 8600	to	8699	262 337 8400	to	8499
239 322 5800	to	5899	256 247 6900	to	6999	260 553 9600	to	9799	262 337 8500	to	8599
239 322 5900	to	5999	256 550 5536	to	5545	260 553 9800	to	9899	262 337 8600	to	8699
239 607 4783	to	4799	256 799 2257	to	2299	260 553 9900	to	9999	262 337 8700	to	8799
<b>240 593 1879</b>	<b>to</b>	<b>1899</b>	257 154 8763	to	8799	260 761 1603	to	1662	262 337 8800	to	8899
242 591 2048	to	2099	257 154 8800	to	8899	261 183 2100	to	2299	262 337 8900	to	8999
242 735 0388	to	0398	257 765 4567	to	4599	261 426 0408	to	0499	262 337 9000	to	9099
242 951 7276	to	7299	257 765 4610	to	4696	262 082 8000	to	8099	262 337 9100	to	9199
243 535 6370	to	6399	257 765 4737	to	4799	262 082 8100	to	8199	262 337 9200	to	9299
244 004 9985	to	9999	257 792 7800	to	7889	262 082 8200	to	8299	262 337 9300	to	9399
244 004 9985	to	9999	257 792 7900	to	7999	262 082 8300	to	8399	262 337 9400	to	9499
244 268 9765	to	9799	257 792 8000	to	8099	262 082 8400	to	8499	262 337 9500	to	9599
244 347 4471	to	4499	257 856 9863	to	9899	262 288 7302	to	7399	262 337 9600	to	9699
249 056 1551	to	1599	258 103 1773	to	1782	262 288 7400	to	7499	262 337 9700	to	9799
249 336 9438	to	9499	258 405 1800	to	1899	262 288 9900	to	9999	262 337 9800	to	9899
249 399 4000	to	4099	258 405 1900	to	1999	262 337 2600	to	2699	262 337 9900	to	9999
249 399 4100	to	4199	258 405 3300	to	3399	262 337 2700	to	2700	262 472 3188	to	3199
249 399 4200	to	4299	258 405 3400	to	3499	262 337 2800	to	2800	262 472 3200	to	3299
249 399 4300	to	4399	258 405 3500	to	3599	262 337 2900	to	2900	262 546 3100	to	3199
249 399 4400	to	4499	258 405 3700	to	3799	262 337 3000	to	3099	262 546 3200	to	3299
249 399 4500	to	4599	258 405 3800	to	3899	262 337 3100	to	3199	262 546 3300	to	3399
249 399 4600	to	4699	258 405 3900	to	3999	262 337 3200	to	3299	262 546 3400	to	3499
249 399 4700	to	4799	258 405 4000	to	4099	262 337 3300	to	3399	262 546 3500	to	3599
249 399 4800	to	4899	258 405 4100	to	4199	262 337 3400	to	3499	262 546 3600	to	3699
249 399 4900	to	4999	258 405 4200	to	4299	262 337 3500	to	3599	262 546 3900	to	3999
<b>250 159 7502</b>	<b>to</b>	<b>7599</b>	258 405 4600	to	4699	262 337 3600	to	3699	262 546 4300	to	4399
250 566 9644	to	9699	258 405 5600	to	5699	262 337 3700	to	3799	262 546 4400	to	4499
250 661 8425	to	8499	258 405 5700	to	5799	262 337 3800	to	3899	262 546 4500	to	4599
251 335 5731	to	5799	258 405 5800	to	5899	262 337 3900	to	3999	262 546 4600	to	4699
251 379 2380	to	2399	258 405 5900	to	5999	262 337 4000	to	4099	262 546 4700	to	4799
252 005 7626	to	7699	258 405 6000	to	6099	262 337 4100	to	4199	262 546 4800	to	4899
252 421 8401	to	8499	258 405 6100	to	6199	262 337 4200	to	4299	262 546 4900	to	4999
252 464 2810	to	2899	258 405 6200	to	6299	262 337 4300	to	4399	262 546 7100	to	7199
252 612 3683	to	3699	258 405 6300	to	6399	262 337 4400	to	4499	262 546 7200	to	7299

262 546 7300	to	7399	389 846 3145	to	3195	411 922 2322	to	2399	436 160 6441	to	6499
262 546 7400	to	7499	389 887 9211	to	9230	412 193 0900	to	0999	437 316 7115	to	7199
262 546 9800	to	9899	389 887 9234	to	9299	412 395 8599	to	8699	437 427 0500	to	3499
262 546 9900	to	9999	<b>390 001 3182 to 3199</b>			412 485 6500	to	6599	439 179 2300	to	2399
262 567 1788	to	1799	390 001 3500	to	3699	412 485 6610	to	6699	439 310 0458	to	0499
263 254 2500	to	2500	390 545 5974	to	5999	412 885 5953	to	5999	<b>440 698 1947 to 1999</b>		
263 340 0000	to	0099	391 104 6146	to	6199	414 193 3608	to	3674	440 858 6300	to	6399
263 340 0100	to	0199	391 574 1466	to	1499	414 193 3677	to	3699	440 858 6420	to	7299
263 340 0500	to	0599	391 783 3020	to	3599	414 411 7348	to	7399	441 199 1655	to	1699
263 340 0600	to	0699	391 792 6100	to	6199	414 640 0757	to	0799	443 127 3648	to	3699
263 340 2700	to	2799	392 668 2956	to	2999	414 965 1727	to	1799	443 127 4000	to	4099
263 340 2800	to	2899	392 854 8500	to	8899	417 302 8104	to	8199	443 673 7900	to	7999
263 340 3000	to	3099	393 584 7566	to	7699	417 387 6532	to	6599	443 800 9335	to	9399
264 341 2360	to	2399	393 650 0074	to	0099	417 496 6800	to	6999	444 382 8822	to	8899
264 380 4000	to	4099	393 838 8316	to	8499	417 871 9250	to	9299	444 390 1667	to	1699
264 380 4100	to	4199	393 893 6007	to	6099	417 930 9533	to	9599	444 457 3854	to	3899
264 799 6049	to	6099	394 126 6907	to	6999	418 164 6500	to	6799	<b>450 048 4173 to 4199</b>		
264 860 7832	to	7868	394 189 0405	to	0599	418 423 9863	to	9899	450 048 4442	to	4699
265 127 3658	to	3699	394 822 3243	to	3278	418 633 5922	to	5999	450 560 5173	to	5199
265 380 7111	to	7137	394 990 1810	to	1899	418 719 8520	to	8599	450 620 3077	to	3099
265 444 4762	to	4799	395 343 3264	to	3299	418 744 2235	to	2299	450 620 3135	to	3199
265 548 7074	to	7099	395 373 3035	to	3099	418 962 2848	to	2899	450 780 2716	to	2799
266 106 0000	to	2499	395 396 9649	to	9799	419 543 0286	to	0299	450 801 2700	to	2799
266 129 5809	to	5899	395 970 3240	to	3299	419 730 0300	to	0399	451 109 2967	to	2984
266 673 0000	to	2499	397 622 4054	to	4099	<b>420 277 0015 to 0049</b>			451 115 4110	to	4125
266 749 7900	to	7999	397 819 8902	to	8999	420 599 0734	to	0798	451 115 4127	to	4199
266 868 0952	to	0999	398 149 7200	to	7699	420 661 4115	to	4199	451 746 0700	to	0799
266 868 1028	to	1099	399 070 0872	to	0899	420 758 9500	to	9699	452 265 0074	to	0099
266 868 1100	to	1199	399 156 7119	to	7199	420 969 3951	to	3971	452 265 0246	to	0299
266 868 1200	to	1299	399 203 5064	to	5099	420 969 3973	to	3999	452 265 0335	to	0999
267 296 1237	to	1299	399 296 9910	to	9999	421 116 3565	to	3599	452 509 1169	to	1199
267 324 8946	to	8998	399 396 8935	to	8999	421 130 9300	to	9399	452 855 6471	to	6499
268 072 1203	to	1299	399 792 7775	to	7799	421 313 4500	to	4999	452 890 4679	to	4799
<b>271 660 4333 to 4400</b>			399 792 8300	to	8399	421 364 5537	to	5599	452 900 8215	to	8238
273 520 6000	to	8999	<b>400 427 1051 to 1999</b>			421 656 2609	to	2699	453 117 9146	to	9199
273 775 7700	to	7899	401 045 1505	to	1549	421 988 9700	to	9799	453 334 3631	to	3699
274 750 0300	to	0400	401 045 1571	to	1599	422 172 4667	to	4699	453 603 7841	to	7891
274 782 0549	to	0599	401 294 2700	to	2799	422 484 4212	to	4299	453 650 1140	to	1199
<b>302 000 0000 to 9999</b>			401 310 9505	to	9599	422 556 1270	to	1299	453 741 1300	to	1399
<b>349 746 2056 to 2099</b>			401 382 5312	to	5399	422 587 7024	to	7099	454 013 2919	to	2999
<b>350 518 7350 to 7374</b>			402 578 7876	to	7899	422 819 7533	to	7599	454 186 2411	to	2499
<b>360 011 1690 to 1699</b>			403 125 6744	to	6799	422 842 5073	to	5087	454 268 4883	to	4899
360 168 6008	to	6099	403 260 7000	to	7499	422 907 7563	to	7599	454 302 5400	to	5499
360 173 8800	to	8899	403 280 6470	to	6499	424 500 6050	to	6099	454 490 8300	to	8399
360 324 2326	to	2399	403 685 8600	to	8699	424 641 8500	to	8599	454 547 7434	to	7499
362 861 3064	to	3099	404 003 0300	to	0399	424 871 6600	to	6699	454 922 4867	to	4895
<b>373 006 2176 to 2199</b>			404 041 8838	to	8899	425 298 2352	to	2399	455 221 1348	to	1499
374 768 2600	to	2699	404 071 4268	to	4299	425 418 4269	to	4299	455 364 2147	to	2199
375 169 4400	to	4599	404 347 5356	to	5399	425 418 4405	to	4499	455 399 5400	to	5499
375 829 3400	to	3499	404 347 5548	to	5599	426 547 4566	to	4599	455 476 0676	to	0699
375 851 9100	to	9199	404 726 4500	to	4599	427 412 6337	to	6499	455 543 0618	to	0699
376 196 0911	to	0999	404 961 5001	to	5199	427 481 0900	to	0999	456 410 9006	to	9099
378 085 3679	to	3699	405 325 0188	to	0198	428 027 2742	to	2752	456 470 4146	to	4299
378 351 1063	to	1099	406 009 4587	to	4599	429 474 4172	to	4199	456 619 4460	to	4499
379 843 5100	to	5199	406 260 6830	to	6899	429 889 2900	to	2999	457 333 2686	to	2699
<b>380 093 9600 to 9699</b>			406 459 6641	to	6999	<b>430 150 4401 to 4599</b>			457 729 1767	to	1777
380 165 1165	to	1199	406 733 3000	to	3999	430 172 9800	to	9899	457 937 8615	to	8699
381 325 4500	to	4599	407 545 1557	to	1599	430 177 1900	to	2099	458 028 9810	to	9899
381 604 2510	to	2699	407 594 0412	to	0599	430 444 9500	to	9699	458 057 2712	to	2999
381 645 9525	to	9599	407 692 9100	to	9299	430 664 4070	to	4099	458 069 9537	to	9599
383 314 3968	to	3999	407 959 2190	to	2199	432 168 8419	to	8499	458 069 9665	to	9699
383 892 1000	to	1344	408 265 2275	to	2288	432 708 6800	to	6999	458 337 5222	to	5299
383 892 1382	to	1399	408 499 7700	to	7799	432 744 1544	to	1599	458 354 7653	to	7999
384 925 3641	to	3654	408 499 7900	to	7999	432 995 9775	to	9799	458 671 8678	to	8699
385 568 2331	to	2399	408 682 8484	to	8599	433 003 5800	to	5899	458 671 8721	to	8798
385 599 7554	to	7575	408 698 7015	to	7099	433 757 3047	to	3099	458 847 5044	to	5999
385 774 2024	to	2099	409 072 3941	to	3999	433 765 4003	to	4099	459 274 7624	to	7699
386 624 1412	to	1599	<b>410 491 2311 to 2399</b>			434 482 7060	to	7199	459 365 5432	to	5499
386 883 8936	to	8999	410 694 8400	to	8599	434 513 2386	to	2399	459 378 5764	to	5799
387 314 5574	to	5599	410 775 1500	to	1599	434 968 3076	to	3092	459 472 4816	to	4999
387 837 6300	to	6399	410 795 7927	to	7999	435 303 1831	to	1842	<b>460 349 6878 to 6899</b>		
388 828 0656	to	0699	410 867 0917	to	0966	435 303 1986	to	1999	460 550 1909	to	1999
389 696 2400	to	2799	410 867 0970	to	0999	435 666 6092	to	6399	460 997 5234	to	5299
389 846 3104	to	3135	411 868 1023	to	1199	436 082 6400	to	6899	461 973 6443	to	6499



637 562 5828	to 5899	652 754 6317	to 6399	683 118 2389	to 2399	701 772 0870	to 0899
638 042 1647	to 1699	653 131 4945	to 4999	683 378 2000	to 2099	701 838 2800	to 2899
638 049 4984	to 4999	653 426 3300	to 3399	683 378 2117	to 2299	701 941 0600	to 0699
638 318 1115	to 1199	653 455 4874	to 4899	683 415 1200	to 1499	702 171 1603	to 1699
638 318 1453	to 1499	654 238 0000	to 0399	683 444 8159	to 8199	702 195 5109	to 5199
638 885 0000	to 0299	654 404 3065	to 3092	685 154 7780	to 7789	702 254 9300	to 9399
638 903 4362	to 4373	654 962 2900	to 3199	685 297 7645	to 7699	702 264 7569	to 7599
639 415 1929	to 1999	655 103 5081	to 5199	685 623 5264	to 5299	702 519 0513	to 0524
639 415 2019	to 2099	655 523 2600	to 2999	685 650 9487	to 9499	702 713 1800	to 1809
639 420 6200	to 6299	656 305 2448	to 2499	685 669 4200	to 4299	702 821 5730	to 5799
639 469 3517	to 3799	657 347 4438	to 4999	685 757 8452	to 8499	702 821 5805	to 5899
639 605 2143	to 2199	657 710 8100	to 8999	686 071 2694	to 2799	702 844 6975	to 6994
639 657 8600	to 8799	657 780 0985	to 0999	686 176 3333	to 3354	702 846 6331	to 6399
<b>640 289 7500 to 7599</b>		658 586 1400	to 1499	686 372 3200	to 3299	702 848 3900	to 3999
640 289 7700	to 7999	658 877 8000	to 8199	686 644 5879	to 5899	702 857 7302	to 7499
641 170 4420	to 4499	658 880 8000	to 8199	686 899 1371	to 1399	702 878 0114	to 0199
641 318 3133	to 3199	659 398 7300	to 7399	686 931 7636	to 7699	703 364 1707	to 1799
641 378 6500	to 6999	659 706 8113	to 8199	687 601 0973	to 0999	<b>740 002 7710 to 7719</b>	
641 383 8739	to 8799	659 846 7837	to 7899	687 614 6774	to 6799	740 037 6730	to 6800
641 877 3187	to 3299	<b>660 510 4100 to 4199</b>		688 120 9000	to 9999	740 119 2275	to 2284
641 877 3310	to 3399	660 673 0400	to 0599	688 314 3107	to 3191	740 130 6688	to 6698
642 355 8094	to 8199	661 488 5000	to 5099	<b>690 291 1361 to 1371</b>		740 144 2780	to 2795
642 355 8308	to 8999	661 609 9100	to 9199	690 788 2877	to 2899	740 241 9049	to 9099
642 900 0018	to 0099	661 716 9420	to 9499	690 893 5344	to 5399	740 252 9265	to 9294
643 030 6254	to 6299	661 906 6522	to 6599	690 893 5512	to 5599	740 255 1718	to 1799
644 066 0882	to 0899	662 021 8332	to 8399	690 904 1300	to 1599	740 274 2602	to 2619
644 069 0600	to 0699	662 068 0700	to 0899	690 941 6000	to 6199	740 277 0366	to 0392
644 077 7506	to 7699	662 553 0774	to 0799	691 313 6383	to 6399	740 332 7658	to 7671
644 085 8157	to 8199	663 078 7034	to 7099	691 313 6600	to 6699	740 348 6641	to 6658
644 112 9839	to 9899	663 763 5300	to 5399	691 582 8003	to 8099	740 351 4790	to 4799
644 373 9083	to 9099	663 883 7039	to 7499	691 664 1800	to 1999	740 374 7416	to 7499
644 380 1460	to 1499	663 938 9200	to 9299	691 664 2400	to 2499	740 470 2420	to 2443
644 733 4715	to 4799	664 253 8000	to 8499	692 727 9362	to 9399	740 514 0300	to 0499
644 900 9712	to 9799	664 656 3055	to 3099	692 798 1800	to 1899	740 523 7432	to 7449
644 901 0109	to 1299	665 174 6400	to 6499	693 249 0779	to 0799	740 535 1555	to 1580
644 901 1325	to 1399	665 274 8208	to 8299	693 249 0877	to 1699	740 557 3570	to 3579
644 923 6800	to 7799	665 669 5400	to 5499	693 445 0566	to 0999	740 650 4104	to 4140
644 932 4655	to 4699	666 132 8226	to 8299	693 448 8500	to 8999	740 684 0620	to 0800
645 318 7240	to 7499	666 696 2209	to 2299	693 645 9583	to 9599	740 701 6105	to 6114
645 333 1766	to 1799	666 696 2309	to 2399	693 965 4200	to 4299	740 705 9790	to 9799
645 790 8632	to 8699	667 032 9300	to 9399	695 741 2906	to 2999	740 726 6400	to 6500
645 821 0657	to 0699	667 729 5529	to 5599	695 947 8518	to 8599	740 748 8319	to 8329
645 930 7948	to 7999	668 383 8400	to 8699	696 662 8247	to 8299	740 765 3306	to 3399
645 975 0737	to 0762	<b>670 368 3400 to 3499</b>		697 447 8285	to 8296	740 774 8434	to 8499
646 242 6200	to 6299	670 369 7336	to 7399	698 042 4816	to 4899	740 779 4259	to 4299
646 270 7639	to 7799	670 750 7169	to 7199	698 131 2138	to 2157	740 786 1885	to 1899
646 798 4000	to 4999	671 046 6200	to 6399	698 227 0000	to 0099	740 790 5989	to 5999
647 048 7035	to 7099	671 251 5448	to 5499	<b>700 065 2570 to 2599</b>		740 803 4870	to 4879
647 049 2900	to 2999	671 926 5600	to 5799	700 065 4800	to 4899	740 820 4854	to 7836
647 398 8300	to 8399	672 444 2000	to 2999	700 190 3350	to 3359	740 827 7578	to 7594
647 398 8481	to 8499	672 828 3410	to 3499	700 228 6048	to 6099	740 917 7490	to 7499
647 437 3000	to 4999	673 167 5776	to 5799	700 650 0452	to 0499	740 918 5531	to 5549
647 811 2188	to 2199	675 464 3700	to 3799	700 666 1323	to 1349	741 037 8528	to 8551
648 009 6057	to 6099	675 464 4000	to 4199	700 786 9106	to 9142	742 030 6135	to 6149
648 163 5300	to 5499	676 365 5958	to 5999	700 859 0744	to 0758	742 033 2663	to 2674
648 722 5283	to 5299	676 669 1024	to 1099	701 028 6780	to 6899	742 040 3300	to 3309
648 892 3164	to 3199	677 126 6734	to 6799	701 213 3900	to 3999	742 112 8155	to 8199
649 100 3989	to 3999	677 333 9979	to 9999	701 267 2000	to 3999	742 151 5000	to 5014
649 647 0370	to 0399	677 466 1088	to 1099	701 335 7312	to 7399	742 191 4640	to 4649
649 647 0522	to 0599	678 071 4500	to 4799	701 369 2005	to 2050	742 192 5210	to 5224
649 647 5237	to 5399	678 096 7531	to 7599	701 499 2260	to 2299	742 222 9200	to 9210
649 647 9100	to 9299	679 909 2578	to 2599	701 503 2247	to 2299	742 228 9660	to 9669
649 666 7800	to 8299	<b>680 112 9565 to 9599</b>		701 541 2271	to 2299	742 247 6980	to 6989
<b>650 114 7707 to 7719</b>		680 244 0903	to 0999	701 553 6557	to 6599	742 290 0936	to 0950
650 130 3400	to 3599	680 412 6046	to 6099	701 578 7460	to 7469	742 302 7600	to 7699
650 213 0406	to 0499	680 761 6800	to 6899	701 578 7475	to 7499	742 305 3711	to 3799
650 555 1749	to 1799	681 677 0540	to 0699	701 601 3457	to 3499	742 305 3800	to 3899
650 564 1900	to 1999	682 070 1029	to 1099	701 605 5913	to 5999	742 305 3900	to 3999
650 627 4212	to 4299	682 956 6280	to 6299	701 695 3982	to 3999	742 305 4000	to 4099
650 736 2043	to 2099	682 956 6490	to 6599	701 695 4148	to 4199	742 305 4100	to 4199
650 739 1540	to 1699	682 956 6700	to 6799	701 695 4227	to 4299	<b>805 885 8411 to 8499</b>	
651 741 4415	to 4499	682 965 1178	to 1199	701 708 1741	to 1799	806 087 1100	to 1499
651 882 2800	to 2899	682 965 1201	to 1299	701 736 3966	to 3999	806 268 9275	to 9299



806 534 3400 to 3477	855 001 6204 to 6249	902 089 1253 to 1299	917 486 4900 to 4999
807 342 3283 to 3399	855 319 9364 to 9399	902 198 9769 to 9799	918 460 0602 to 0699
808 086 7100 to 7199	855 361 3390 to 3399	902 948 1269 to 1299	918 951 7231 to 7299
808 090 3440 to 3499	856 226 0490 to 0499	902 985 0833 to 0899	919 519 2786 to 2799
808 325 5161 to 5699	856 656 5800 to 5999	903 370 6934 to 6999	919 536 0770 to 0799
808 784 8000 to 8299	856 752 0200 to 0299	904 600 6523 to 6599	919 814 3095 to 3199
<b>830 125 0672 to 0699</b>	857 111 1352 to 1399	904 892 0378 to 0399	919 889 5110 to 5134
830 602 5800 to 5999	857 279 3450 to 3499	904 892 0648 to 1299	919 889 5137 to 5176
830 610 3700 to 3799	857 843 4000 to 4099	905 056 2216 to 2299	919 889 5178 to 5199
830 983 3500 to 3599	858 124 7644 to 7699	905 510 6647 to 6799	919 889 5030 to 5070
830 983 3635 to 3699	858 756 3111 to 3299	905 510 6900 to 7099	919 889 5090 to 5099
831 354 1387 to 1399	859 063 8200 to 8699	905 794 0000 to 0199	919 915 2774 to 2787
831 815 8240 to 8299	859 190 0600 to 0644	905 794 0288 to 0299	<b>920 155 4662 to 4687</b>
832 525 3810 to 3899	859 437 5538 to 5599	905 873 6900 to 6999	920 309 9039 to 9199
833 159 1884 to 1899	859 811 2888 to 2899	905 873 7100 to 7299	920 771 5321 to 5399
833 456 2567 to 2599	859 855 8873 to 8999	905 880 8900 to 8999	920 857 5500 to 5899
833 566 3015 to 3071	<b>860 240 8520 to 8599</b>	905 889 7100 to 7199	920 864 3480 to 3499
834 130 5200 to 5299	860 275 3900 to 3999	906 158 1508 to 1599	920 963 4567 to 4599
834 316 5444 to 5499	860 518 9629 to 9699	906 558 8812 to 8899	921 333 7400 to 7499
834 354 8747 to 8766	860 600 0021 to 0999	906 982 2214 to 2299	921 477 3762 to 3799
834 354 8824 to 8838	861 158 2350 to 2599	907 725 8500 to 8599	922 278 1048 to 1399
835 269 5700 to 5799	861 367 5400 to 5499	907 815 0216 to 0257	922 280 2019 to 2099
835 496 7303 to 7399	861 637 6010 to 6099	908 622 4225 to 4235	922 280 2233 to 2299
835 539 5200 to 5999	861 979 7292 to 7499	908 936 9254 to 9299	922 773 0459 to 0499
835 813 3015 to 3099	862 216 6100 to 6199	909 066 4494 to 7499	923 032 7000 to 7399
837 672 8967 to 8999	862 263 9213 to 9299	909 067 7400 to 7499	923 045 3630 to 3699
837 784 3282 to 3299	862 271 0800 to 0999	909 100 1787 to 1799	923 484 3600 to 3699
838 176 8377 to 8399	862 271 5000 to 5099	909 100 1900 to 2099	923 493 9403 to 9599
838 518 1257 to 1299	863 871 5138 to 5199	909 355 0422 to 0499	923 493 9681 to 9699
839 718 8257 to 8299	863 949 5300 to 5399	909 568 8900 to 9099	923 604 4424 to 4499
<b>840 323 0600 to 0699</b>	864 088 8200 to 8299	909 568 9300 to 9499	923 810 7800 to 8299
840 875 6235 to 6299	864 426 3972 to 3999	909 725 7307 to 7399	924 252 1200 to 1299
840 910 0900 to 0999	864 520 6117 to 6136	909 833 0947 to 0999	924 252 1400 to 1499
841 349 5000 to 5099	865 151 0526 to 0599	<b>910 219 8631 to 8699</b>	924 533 0711 to 0799
841 805 7747 to 7899	865 500 4034 to 4099	910 265 1100 to 1199	924 533 2343 to 2399
841 805 7944 to 8099	865 883 6082 to 6099	910 471 7273 to 7299	924 533 2428 to 2499
842 226 0685 to 0695	866 004 3000 to 3999	910 536 2505 to 2599	924 685 1957 to 1999
842 685 4600 to 4699	866 442 4100 to 4899	910 958 7499 to 7599	924 946 6300 to 6699
842 685 4742 to 4999	867 366 9108 to 9118	911 140 1000 to 2199	925 333 5900 to 6099
842 860 0300 to 0399	867 633 7403 to 7499	911 245 2545 to 2599	925 336 2300 to 2399
842 898 5582 to 5599	867 737 5623 to 5699	911 268 9077 to 9099	926 432 5907 to 5999
843 062 7100 to 7199	868 169 4529 to 4599	911 400 8948 to 8999	926 436 3600 to 3699
843 077 6288 to 6299	868 173 8400 to 8599	911 508 1620 to 1799	927 765 6257 to 6299
843 077 6378 to 6399	868 514 9000 to 9099	911 509 9310 to 9399	928 197 8100 to 8199
843 758 5769 to 5778	868 566 9200 to 9299	911 523 3000 to 3999	928 197 8283 to 8299
843 786 2554 to 2699	869 200 0000 to 9999	912 057 9922 to 9999	928 856 2059 to 2068
845 656 8165 to 8199	869 387 1150 to 1199	912 882 0563 to 0899	<b>930 078 5800 to 5899</b>
845 727 2100 to 2199	869 505 3500 to 3599	913 605 2218 to 2299	930 219 1722 to 1799
845 746 2618 to 2635	869 523 7033 to 7099	913 709 2429 to 2499	930 335 7810 to 7819
846 390 7531 to 7599	869 566 6150 to 6167	913 818 3501 to 3999	931 097 9259 to 9299
846 918 0572 to 0599	869 800 0000 to 999 9999	914 063 4300 to 4399	931 156 1502 to 1579
847 237 7690 to 7699	<b>870 054 4814 to 4899</b>	914 346 7621 to 7644	931 156 1600 to 1625
847 284 2481 to 2499	870 491 4812 to 4849	914 453 1366 to 1399	931 156 1671 to 1699
847 374 7055 to 7065	870 536 5820 to 5829	914 529 6185 to 6299	932 506 6400 to 6599
847 374 7055 to 7065	870 541 7167 to 7239	914 896 4658 to 4699	932 732 1796 to 1799
847 636 5304 to 5399	870 575 8155 to 8999	915 187 8774 to 8779	932 827 9026 to 9099
847 700 5447 to 5499	870 589 0485 to 0494	915 300 2783 to 2799	932 957 2300 to 2399
847 723 7500 to 7599	870 691 7060 to 7099	915 546 6822 to 6999	933 060 6160 to 6189
849 485 3427 to 3499	872 028 4850 to 4899	915 646 5183 to 5199	933 387 2541 to 2561
849 520 9850 to 9899	872 029 9306 to 9399	915 671 3963 to 3980	933 760 3609 to 4199
849 608 1357 to 1399	872 078 3709 to 3799	915 671 3982 to 3999	933 894 0928 to 0999
849 792 2600 to 2699	872 100 0445 to 0459	915 675 2217 to 2299	934 018 2729 to 2741
<b>850 546 1862 to 1899</b>	<b>900 556 4178 to 4199</b>	916 440 3377 to 3399	934 180 0300 to 0399
851 143 6826 to 6844	900 845 0044 to 0099	916 670 6352 to 6399	934 236 3954 to 3999
851 209 9880 to 9899	900 936 0217 to 0299	916 682 5300 to 5399	934 622 8717 to 8999
851 928 9221 to 9299	900 936 0435 to 0499	916 694 1414 to 1499	935 216 0312 to 0399
852 589 6560 to 6599	901 058 5255 to 5280	916 703 0802 to 0821	935 843 2202 to 2247
853 049 3646 to 3699	901 273 1082 to 1099	917 089 0709 to 0799	936 024 8889 to 8899
854 304 4089 to 4999	901 287 5143 to 5199	917 089 0842 to 0899	936 339 4455 to 4499
854 529 2200 to 2299	901 291 2789 to 2799	917 216 2928 to 2999	
854 532 0000 to 2999	901 525 7122 to 7199	917 370 6300 to 6499	

## Missing, Lost, or Stolen Canadian Money Order Forms

### Do Not Cash — Upon Receipt, Notify Local Postal Inspectors

Provide this listing to all Postal Service™ employees responsible for accepting and cashing postal money orders. Destroy all interim notices when the numbers listed appear in the *Postal Bulletin*. The new money order serial

numbers consist of the first 9 digits. The tenth digit is a check digit only.

Do not cash outdated money orders **104 151 601 to 692 600 000**. Advise holders to send invalid money orders to Canada Post Corporation, Ottawa, Canada K1A 0B1. Check for altered dollar amounts by holding money orders to the light.

719 869 731	to	9 760	728 915 371	to	5 850	735 283 008	to	3 020	742 684 849	to	4 890
<b>720 227 871</b>	<b>to</b>	<b>7 930</b>	728 953 141	to	3 410	735 293 131	to	3 220	742 839 553	to	9 630
720 227 949	to	7 960	728 954 280	to	4 310	735 635 010	to	5 040	742 913 668	to	3 700
720 368 543	to	8 570	729 169 081	to	9 140	735 783 961	to	3 990	742 917 287	to	7 296
720 392 151	to	2 570	729 363 841	to	3 870	735 803 401	to	3 430	742 921 891	to	1 980
720 556 491	to	6 640	729 682 891	to	3 190	736 005 420	to	5 440	742 983 631	to	3 810
720 558 621	to	8 650	729 838 940	to	9 070	736 366 021	to	6 110	743 020 021	to	0 170
720 575 361	to	5 570	729 839 101	to	9 130	736 624 456	to	4 500	743 206 491	to	6 500
720 590 152	to	0 179	<b>730 077 683</b>	<b>to</b>	<b>7 840</b>	736 670 851	to	1 060	743 235 992	to	6 050
721 638 331	to	9 170	730 109 847	to	9 880	736 767 061	to	7 090	743 940 631	to	0 900
721 815 391	to	5 420	730 373 761	to	3 850	736 767 093	to	7 120	743 978 011	to	8 070
721 969 713	to	9 740	730 501 951	to	2 130	736 982 191	to	2 370	744 234 751	to	4 780
722 072 137	to	2 160	730 519 379	to	9 470	736 982 551	to	2 730	744 499 591	to	9 680
722 378 265	to	8 280	730 569 278	to	9 360	737 110 141	to	0 170	744 626 901	to	6 910
722 413 990	to	4 004	730 711 711	to	1 740	737 185 501	to	5 710	745 388 794	to	8 910
722 764 948	to	4 980	730 722 991	to	3 230	737 317 321	to	7 350	746 446 806	to	6 820
722 825 840	to	5 889	730 845 970	to	5 990	737 517 781	to	7 840	746 818 351	to	8 410
723 153 841	to	3 850	730 888 291	to	8 320	737 628 181	to	8 210	747 245 266	to	5 280
723 237 616	to	7 630	730 927 591	to	7 680	737 634 258	to	4 270	747 364 813	to	4 830
723 331 081	to	1 110	731 307 914	to	7 930	738 361 971	to	1 980	747 501 434	to	1 450
723 496 443	to	6 470	731 402 431	to	2 460	738 447 601	to	7 660	747 739 891	to	0 070
723 967 291	to	7 320	731 407 232	to	7 320	738 648 355	to	8 450	748 148 649	to	8 760
724 655 196	to	5 340	731 588 301	to	8 340	738 849 811	to	9 900	748 259 960	to	9 970
724 711 441	to	1 500	731 767 273	to	7 320	738 892 270	to	2 290	748 565 162	to	5 280
724 711 538	to	1 560	731 781 061	to	1 120	738 997 259	to	7 380	748 874 988	to	5 030
724 793 221	to	3 250	731 837 821	to	7 910	739 161 451	to	1 540	749 137 381	to	7 410
724 908 109	to	8 120	731 841 377	to	1 450	739 219 381	to	9 440	749 190 192	to	0 210
724 937 461	to	7 670	732 018 481	to	8 600	739 740 151	to	0 180	749 685 421	to	5 450
725 163 118	to	3 151	732 067 972	to	8 370	739 793 491	to	3 520	749 846 791	to	6 850
725 202 735	to	2 750	732 188 649	to	8 670	739 793 527	to	3 550	749 993 131	to	3 580
725 398 591	to	8 800	732 193 460	to	3 470	739 942 621	to	2 650	<b>750 071 587</b>	<b>to</b>	<b>1 610</b>
725 464 591	to	4 920	732 201 241	to	1 390	739 999 231	to	9 320	750 408 167	to	8 183
725 475 321	to	5 330	732 220 431	to	0 440	<b>740 011 517</b>	<b>to</b>	<b>1 530</b>	750 438 421	to	8 501
725 711 057	to	1 070	732 355 201	to	5 380	740 030 701	to	0 970	750 743 911	to	4 030
725 738 581	to	8 730	732 472 320	to	2 560	740 261 740	to	1 820	750 779 118	to	9 400
725 981 311	to	1 430	732 541 605	to	1 620	740 265 811	to	6 290	750 910 981	to	1 010
725 987 835	to	7 880	732 572 221	to	2 490	740 299 111	to	9 170	750 960 841	to	0 900
726 060 811	to	0 900	732 586 479	to	6 710	740 299 231	to	9 260	751 296 211	to	6 240
726 391 970	to	2 520	732 994 037	to	4 080	740 329 266	to	9 320	751 539 121	to	9 180
726 484 771	to	4 800	733 163 449	to	3 460	740 889 081	to	9 090	751 541 311	to	1 790
726 493 351	to	5 300	733 297 171	to	7 290	741 010 421	to	0 530	751 757 641	to	7 700
726 504 031	to	4 063	733 446 631	to	7 110	741 113 041	to	3 370	751 936 951	to	7 010
726 504 070	to	4 090	733 474 665	to	4 770	741 373 891	to	4 340	751 951 861	to	1 890
726 504 331	to	4 390	733 704 482	to	4 570	741 452 369	to	2 490	751 999 021	to	9 110
726 563 701	to	4 060	733 751 041	to	1 130	741 492 991	to	3 140	752 139 516	to	9 570
726 599 371	to	9 460	734 009 101	to	9 130	741 553 460	to	3 470	752 182 892	to	2 950
726 626 356	to	6 370	734 290 759	to	0 770	741 764 431	to	4 520	752 206 861	to	7 100
727 182 271	to	2 510	734 389 273	to	9 290	741 764 431	to	4 520	752 295 241	to	5 600
727 416 181	to	6 240	734 440 031	to	0 111	742 178 834	to	8 880	752 731 351	to	1 410
727 481 431	to	1 460	734 797 201	to	7 320	742 325 500	to	5 520	752 767 441	to	7 470
727 749 241	to	9 780	734 939 611	to	9 640	742 325 668	to	5 700	753 008 941	to	9 030
728 382 331	to	2 480	734 950 111	to	0 170	742 408 771	to	8 830	753 194 311	to	4 370
728 702 338	to	2 400	735 120 331	to	0 840	742 512 120	to	2 150	753 620 378	to	0 400

754 013 917	to	3 940	763 717 694	to	7 800	775 373 449	to	3 460	803 747 402	to	7 520
754 161 061	to	1 120	763 826 461	to	6 520	<b>789 257 191</b>	<b>to</b>	<b>7 250</b>	804 138 181	to	8 420
754 358 445	to	8 610	763 900 460	to	0 471	<b>790 448 020</b>	<b>to</b>	<b>8 460</b>	804 428 224	to	8 250
754 410 451	to	0 660	763 900 479	to	0 530	790 597 485	to	7 530	804 682 411	to	2 710
754 438 393	to	8 410	763 917 271	to	7 750	790 911 883	to	1 900	805 272 525	to	2 540
754 493 109	to	3 130	764 125 801	to	5 860	791 057 441	to	7 550	805 523 445	to	3 460
754 664 182	to	4 220	764 284 525	to	4 560	791 239 081	to	9 290	805 745 704	to	5 730
754 816 377	to	6 470	764 526 241	to	6 330	791 374 483	to	4 500	806 452 907	to	2 980
755 487 421	to	7 600	764 601 421	to	1 600	791 387 971	to	8 030	806 744 781	to	4 850
755 592 901	to	3 140	764 650 231	to	0 470	791 447 521	to	7 850	806 982 181	to	2 300
755 790 020	to	0 030	764 984 371	to	4 850	791 451 151	to	1 240	807 764 791	to	4 910
755 791 730	to	1 800	765 003 667	to	3 680	791 500 009	to	0 470	808 089 931	to	9 960
755 926 951	to	7 070	765 042 517	to	2 540	791 771 431	to	1 490	808 656 423	to	6 450
755 934 332	to	4 510	765 194 728	to	4 970	792 004 293	to	4 320	808 753 771	to	3 800
755 957 701	to	8 000	765 387 365	to	7 450	792 018 379	to	8 420	809 189 001	to	9 010
755 962 981	to	3 280	765 541 801	to	2 100	792 070 621	to	0 740	809 886 879	to	6 930
756 035 371	to	5 490	765 638 461	to	8 970	792 145 211	to	5 230	809 890 489	to	0 500
756 301 257	to	1 290	765 647 101	to	7 190	792 391 381	to	1 620	<b>810 323 734</b>	<b>to</b>	<b>3 760</b>
756 371 565	to	1 580	765 813 781	to	4 029	792 452 779	to	2 790	810 367 116	to	7 140
756 876 031	to	6 120	765 879 314	to	9 390	792 772 728	to	2 770	810 526 351	to	6 500
756 876 151	to	6 240	765 954 001	to	4 030	792 903 511	to	3 990	810 806 911	to	6 940
756 970 129	to	0 140	766 120 286	to	0 320	793 282 518	to	2 533	810 807 211	to	7 240
757 059 613	to	9 630	766 125 716	to	5 750	794 041 831	to	2 040	811 423 021	to	3 110
757 078 540	to	8 560	766 158 824	to	8 840	794 397 709	to	7 780	811 517 221	to	7 239
757 086 209	to	6 240	766 388 433	to	8 460	794 581 741	to	2 040	811 721 101	to	1 130
757 240 591	to	0 650	766 509 421	to	9 660	794 592 122	to	2 150	812 025 721	to	5 900
757 277 371	to	7 700	766 572 901	to	3 020	795 032 251	to	2 340	812 093 073	to	3 130
757 291 591	to	2 730	766 748 500	to	8 521	795 796 291	to	6 350	812 100 821	to	0 840
757 964 251	to	4 280	767 024 341	to	4 370	796 070 139	to	0 160	812 465 251	to	5 610
758 067 001	to	7 090	767 326 471	to	6 590	796 143 151	to	3 630	812 918 341	to	8 670
758 105 221	to	5 250	767 332 561	to	2 950	796 159 725	to	9 740	812 918 701	to	8 760
758 324 941	to	5 000	768 009 841	to	9 960	796 169 306	to	9 340	813 050 491	to	0 520
758 593 628	to	3 650	768 011 489	to	1 520	796 373 406	to	3 430	813 073 171	to	3 200
758 709 038	to	9 060	768 177 980	to	7 990	796 602 961	to	3 050	813 398 476	to	8 550
758 744 101	to	4 160	768 391 081	to	1 170	796 708 441	to	8 500	813 713 971	to	4 000
758 850 883	to	0 900	768 661 569	to	1 650	796 886 281	to	6 430	813 858 121	to	8 150
758 860 951	to	1 550	769 000 051	to	0 080	796 901 701	to	2 000	814 789 330	to	9 349
759 152 851	to	2 880	769 050 841	to	0 900	796 975 466	to	5 590	814 984 656	to	4 680
759 740 941	to	1 090	769 159 081	to	9 178	797 272 917	to	2 950	815 016 020	to	6 030
<b>760 004 596</b>	<b>to</b>	<b>4 610</b>	769 737 496	to	7 510	797 519 441	to	9 460	815 199 410	to	9 420
760 118 191	to	8 250	769 778 491	to	8 730	797 519 731	to	0 240	815 240 491	to	0 520
760 155 001	to	5 090	769 827 331	to	7 450	797 535 181	to	5 330	815 755 591	to	5 620
760 378 002	to	8 020	<b>770 216 071</b>	<b>to</b>	<b>6 100</b>	797 646 151	to	6 180	815 755 622	to	5 650
760 692 722	to	2 749	770 723 281	to	3 400	798 040 053	to	0 080	815 806 381	to	6 680
761 055 460	to	5 480	770 790 451	to	0 480	798 055 813	to	5 830	816 126 834	to	6 870
761 169 781	to	9 810	770 915 150	to	5 490	798 055 891	to	5 950	816 156 721	to	6 780
761 504 941	to	5 120	771 455 551	to	5 610	798 326 371	to	6 520	816 580 903	to	0 920
761 516 836	to	6 910	771 609 661	to	9 690	798 339 167	to	9 210	816 945 571	to	5 600
761 613 588	to	3 600	771 932 551	to	2 580	798 562 411	to	2 440	817 253 011	to	3 280
761 688 631	to	8 690	772 057 224	to	7 440	798 632 461	to	2 490	817 763 881	to	4 060
761 805 199	to	5 240	772 162 660	to	3 070	798 807 151	to	7 510	818 330 562	to	0 610
761 826 106	to	6 120	772 718 615	to	8 640	798 944 761	to	5 030	818 459 641	to	9 670
761 881 171	to	1 560	772 940 140	to	0 160	799 118 616	to	8 640	818 926 273	to	6 320
761 975 641	to	5 670	772 970 886	to	0 940	799 133 191	to	3 220	818 950 351	to	0 380
761 975 886	to	5 895	773 009 419	to	9 430	799 177 626	to	7 650	818 962 492	to	2 530
762 304 144	to	4 170	773 112 031	to	2 060	799 854 751	to	5 200	819 032 341	to	2 730
762 324 931	to	4 960	773 125 387	to	5 410	<b>800 044 320</b>	<b>to</b>	<b>4 410</b>	819 127 054	to	7 080
762 439 261	to	9 290	773 179 320	to	9 410	800 211 901	to	2 440	819 278 540	to	8 670
762 524 158	to	4 220	773 202 989	to	3 140	800 427 530	to	7 540	819 544 681	to	4 740
762 584 872	to	4 970	773 208 991	to	9 290	800 872 741	to	2 830	819 928 441	to	8 650
762 593 431	to	3 460	773 231 311	to	1 340	801 349 801	to	9 830	<b>820 034 406</b>	<b>to</b>	<b>4 430</b>
763 155 160	to	5 180	773 348 739	to	8 940	801 676 681	to	7 100	820 070 761	to	1 540
763 178 631	to	8 660	773 348 739	to	8 940	802 967 821	to	7 940	820 191 342	to	1 360
763 506 001	to	6 060	773 575 891	to	5 950	803 217 601	to	7 780	820 274 856	to	4 880
763 522 141	to	2 470	773 852 971	to	3 030	803 729 731	to	9 850	820 600 171	to	0 230

821 172 241	to	2 360	824 078 341	to	8 370	827 287 861	to	7 950	828 807 781	to	7 840
821 229 661	to	9 720	824 156 325	to	6 340	827 291 502	to	1 520	828 830 952	to	0 963
821 229 743	to	9 780	824 511 252	to	1 270	827 575 381	to	5 470	828 939 781	to	0 050
821 903 731	to	3 910	824 588 281	to	8 370	827 609 085	to	9 100	829 002 721	to	2 870
821 927 841	to	7 850	825 140 397	to	0 460	827 619 811	to	9 840	829 005 301	to	5 540
822 505 801	to	5 830	825 409 651	to	9 680	827 883 511	to	3 600	829 080 241	to	0 330
822 703 442	to	3 470	825 472 171	to	2 200	828 160 441	to	0 530	829 160 986	to	1 000
822 900 991	to	1 020	826 042 898	to	2 920	828 376 201	to	6 260	829 176 841	to	6 930
822 925 951	to	6 100	826 226 644	to	6 670	828 441 602	to	1 630	829 471 561	to	1 590
823 284 931	to	4 990	826 582 951	to	3 430	828 539 316	to	9 340	829 561 065	to	1 080
823 293 031	to	3 210	826 720 201	to	0 230	828 539 341	to	9 370	829 566 481	to	6 510
823 556 011	to	6 100	827 005 671	to	5 830	828 732 331	to	2 390	829 569 931	to	9 960

— *Criminal Investigations Group, U.S. Postal Inspection Service, 7-1-21*

## Verifying U.S. Postal Service Money Orders

Follow these steps to cash a Postal Service™ money order:

1. Check that the amount does not exceed the legal limit: \$1,000 for domestic, and \$700 for international Postal Service money orders.
2. Check that the proper security features are present:
  - When held to the light, a watermark of Benjamin Franklin is repeated from top to bottom on the left side.
  - When held to the light, a dark line (security thread) runs from top to bottom with the word “USPS” repeated.
  - When there is discoloration around the dollar amounts, this might indicate the amounts were changed.

These appear in Postal Service Notice 299, *U.S. Postal Money Order Reference Card*, or online at [usps.com/shop/money-orders.htm](https://usps.com/shop/money-orders.htm).

3. If the money order seems suspicious, call the U.S. Postal Service Money Order Verification System at 866-459-7822.

Provide this information to local banks and retailers, as they also receive Postal Service money orders for cashing.

— *Delivery and Retail Customer Service Operations, 7-1-21*

## Counterfeit Canadian Money Order Forms

### Do Not Cash

To be posted and used by retail window employees. As directed, destroy previous notices. Destroy all interim notices when the numbers listed appear in the *Postal Bulletin*.

671,819,086	683,594,542	687,262,503
676,612,640	684,683,610	687,262,525
677,891,039	686,619,878	687,262,526
678,282,493	686,619,886	687,287,578
678,916,031	686,619,887	687,287,581
679,552,215	686,794,382	687,287,582
679,694,334	686,794,426	694,063,898
679,751,983	686,794,427	694,063,899
679,800,207	686,794,431	694,063,980
681,130,536	687,262,502	701,321,725
681,844,376		

— *Criminal Investigations Group, U.S. Postal Inspection Service, 7-1-21*

## Toll-Free Number Available to Verify Canadian Money Orders

The Canada Post Corporation has a toll-free number that cashing agents can call to verify the validity of Canadian Postal Money Orders. The number is 800-563-0444.

This toll-free number is printed on the back of the Canadian Postal Money Orders.

— *Criminal Investigations Group, U.S. Postal Inspection Service, 7-1-21*

# Other Information

## Overseas Military/Diplomatic Mail

Mail addressed to military and diplomatic post offices overseas is subject to certain conditions or restrictions of mailing regarding content, preparation, and handling. The APO/FPO/DPO table outlines these conditions by APO/FPO/DPO ZIP Codes™ through the use of footnoted mailing restrictions codes (see the [Restrictions](#) page following the table).

Acceptance clerks must use the table with the Retail System Software terminal to determine which APO/FPO/DPO ZIP Codes are active and which conditions of mailing apply.

We have eliminated “Not Active” entries from the table below to save space and paper.

### APO/FPO/DPO Table

APO/FPO/DPO	See Restrictions	APO/FPO/DPO	See Restrictions	APO/FPO/DPO	See Restrictions	APO/FPO/DPO	See Restrictions
09002	A-B-F-F3-H-N-Q-R-S-V-Z-Z1	09068	B-C-D-E-F3-H-R-S-U-Z1	09160	B-C-C2-D-F-F1-F3-H-J-L-M-N-R-R1-T-U-V-Z1	09263	B-C-D-E-F3-H-M-R-S-U
09003	B-C-D-E-F3-H-M-P-R-S-U	09069	A-B-C-D-E-F3-H-N-R-S-U-V	09170	A-B-C2-F-F1-F3-J-L-M-N-R-R1-S-T-V-X-Z1	09264	B-C-E-F3-H-M-R-S-U
09004	B-C-D-E-F3-H-M-R-S-U	09079	B-C-D-E-F3-H-M-R-S-U	09171	A-B-C1-C2-E3-F-F1-F3-J-L-M-N-R-R1-S-T-V-X-Z1	09265	B-C-D-F-F1-H-J-L-M-N-R-S-T-U-V-Z1
09005	B-C-D-E-F3-H-M-P-R-S-U	09090	B-C-D-E-F3-H-M-R-S-U	09172	B-C-D-E-F3-H-M-R-S-U	09266	A-B-F3-R-S-U-V-Z1
09006	B-C-D-E-F3-H-M-R-S-U	09094	B-C-D-F3-H-M-P-R-S-U	09173	B-C-D-E-F3-H-M-R-S-U	09276	A-B-F-F3-I3-L-M-N-R-S-T-V-X-Z1
09008	A-B-F-F3-H-N-Q-R-S-V-Z-Z1	09095	B-C-D-E-H-M-R-U	09174	B-C-C2-F-F1-F3-I3-L-N-R-R1-S-T-V-X-Z1	09277	A-B-E-E1-E2-F1-F3-I3-L-N-R-S-T-V-X-Z1
09009	B-C-D-E-F3-H-M-R-S-U-Z1	09096	B-C-D-E-F3-H-M-R-S-U	09175	A-B-C1-C2-E2-F-F1-F3-H1-J-L-M-N-R-R1-S-T-V-W-X-Z1	09278	A-B-F-F3-I3-L-M-N-R-S-T-V-X-Z1
09010	B-C-D-E-F3-H-M-R-S-U2	09103	A-B-F-F3-H-N-Q-R-S-V-Z-Z1	09176	A-B-C2-F-F1-F3-J-L-M-N-R-R1-S-T-V-X-Z1	09279	A-B-E-E1-F-F3-I3-L-M-N-R-S-T-V-X-Z1
09011	B-C-D-E-F3-H-M-R-S-U	09104	B-C-D-F3-H-M-R-S-U-Z1	09177	B-C-D-E-F3-H-M-R-S-U	09283	A-B-E-E1-F-F3-L-M-N-R-S-T-V-X-Z1
09012	B-C-D-E-F3-H-M-R-S-U-Z1	09107	B-C-D-E-F3-H-M-R-S-U	09178	B-C1-C2-E2-F1-F3-I3-L-M-N-R-S-T-V-X-Z1	09285	A-B-C-E-E1-F1-F3-H-I3-L-M-N-R-S-T-V-X-Z1
09013	B-C-D-E-F-F1-F3-H-M-R-S-U-Z1	09112	B-C-D-E-F3-H-M-R-S-U	09180	B-C-D-E-F3-H-M-R-S-U	09287	B-C2-E1-F1-F3-J-L-N-R-S-T-V-X-Z1
09014	B-C-D-E-F3-H-M-P-R-S-U	09113	A-B-F-F3-H-N-Q-R-S-V-Z-Z1	09186	B-C-D-E-F3-H-M-P-R-S-U	09289	B-E2-F1-F3-H1-J-L-M-N-R-R1-S-T-U2-V-X-Z1
09015	A-B-C-C1-C2-F-F1-F3-J-L-M-N-R-R1-S-V-Z1	09114	B-C-D-E-F3-H-M-R-S-U	09203	A-B-C-C1-C2-F-F1-F3-I3-J-L-M-N-R-R1-T-V-Z1	09290	A-B-F1-F3-J-L-M-N-R-S-T-U2-V-X-Z1
09016	B-C-D-E-F1-F3-H-M-R-S-U	09115	A-B-F-F3-H-N-Q-R-S-V-Z-Z1	09204	B-C-F3-M-N-R-S-V-Z1	09291	B-C-C1-C2-E2-F1-F3-H1-L-N-R-R1-S-T-V-X-Z1
09017	A-B-F-F3-H-N-Q-R-S-V-Z-Z1	09116	A-B-F-F3-H-N-Q-R-S-V-Z-Z1	09211	B-C-D-E-F3-H-M-P-R-S-U	09292	A-B-C-C2-E-E2-E3-F1-F3-H-H1-J-L-M-N-R-R1-S-T-V-X-Z1
09018	A-B-F-F3-H-N-Q-R-S-V-Z-Z1	09123	B-C-D-E-F3-H-M-R-S-U-Z1	09213	B-C2-F-F1-F3-H-J-L-M-N-R-R1-T-U-V-Z1	09301	A-B-C1-C2-E2-F-F1-F3-H1-I3-L-M-N-R-R1-S-T-U4-V-Z1
09020	B-C-D-E-F3-H-M-R-S-U	09125	A-B-C-F-F1-F3-H-N-R-R1-S-V-V1	09214	B-C-D-E-F3-H-M-R-S-U-Z1	09302	A-B-C1-F-F1-F3-H-M-N-R-S-V-Z1
09021	B-C-D-E-F3-H-M-R-S-U-Z1	09126	B-C-D-F3-H-M-P-R-S-U	09216	B,C,F1,F3,M,N,R,S,V,Z1	09305	A-B-C1-E2-F-F1-F3-H1-I3-M-N-R-R1-S-T-V-Z1
09034	B-C-D-E-F3-H-M-R-S-U	09128	B-C-D-E-F3-H-M-R-S-U	09227	B-C-D-E-F3-H-M-R-S-U	09306	A-B-C1-E2-F-F1-F3-H1-R1-S-U2-V-Z1
09044	B-C-D-F1-F3-H-R-S-U	09131	B-C-D-E-F3-H-M-R-S-U	09240	A-B-C1-F-F3-H-N-R-S-V	09307	B-C-C2-F-F3-N-R-R1-S-Z1
09046	B-C-D-E-F3-H-M-R-S-U	09135	A-B-F-F3-H-N-R-S-U-V-Z1	09241	A-B-F3-N-R-S-U-Z1	09309	A-B-C-C1-C2-E2-F-F1-F3-H1-M-N-R-R1-S-V-Z1
09049	B-C-D-E-F3-H-M-R-S-U	09136	B-C-D-E-F1-F3-H-M-P-R-S-U	09242	A-B-C1-F-F3-H-N-R-S-V	09310	A-B-C1-C2-E2-F-F1-F3-H1-I3-L-M-N-R-R1-S-T-U4-V-Z1
09053	B-C-D-E-F3-H-M-R-S-U	09138	B-C-D-F3-H-M-R-S-U	09250	B-C-D-E-F3-H-M-R-S-U	09311	A-B-C1-C2-E2-F-F1-F3-H1-I3-L-M-N-R-R1-S-T-U4-V-Z1
09060	B-C-D-E-F1-F3-H-M-N-R-S-U-Z1	09140	B-C-D-E-F3-H-M-R-S-U	09261	B-C-D-E-F3-H-M-N-R-S-U-V-Z1		
09067	B-C-D-E-F3-H-M-R-S-U	09142	B-C-D-E-F3-H-M-R-S-U				
		09154	B-C-D-E-F3-H-M-R-S-U				

APO/ FPO/ DPO	See Restrictions	APO/ FPO/ DPO	See Restrictions	APO/ FPO/ DPO	See Restrictions	APO/ FPO/ DPO	See Restrictions
09312	A-B-C1-C2-E2-F-F1-F3-H1-I3-L-M-N-R-R1-S-T-U-U4-V-Z-Z1	09487	A-B-C-C1-C2-E2-F1-F3-I3-L-M-N-R-R1-S-T-V-W-X-Z-Z1	09570	A-B-F-F1-F3-R-R1-S-V	09634	A-B-F-F3-M-N-R-S-V
09313	A-B-C-C1-E2-F-F1-F2-F3-H1-R-R1-S-V-Z1	09488	A-B-C-C1-C2-E2-F3-J-L-M-N-S-T-V-W-X-Z1	09573	B-C2-E2-E3-F-F1-F3-R-R1-S-V-Z1	09636	B-C-F-F3-R-U-V-Z1
09315	A-B-C1-E2-F-F3-N-R-R1-S-V-Z1	09489	A-B-C-C1-C2-E2-F1-F3-L-M-N-R-R1-S-T-V-W-X-Z1	09574	B-F-F1-R-R1-V	09642	B-C2-F-F1-F3-J-L-M-N-R-T-U-V
09316	A-B-C1-E2-F-F1-F3-H1-I3-M-N-R-R1-S-T-V-Z-Z1	09490	A-B-C1-C2-E2-F-F1-F3-H1-J-L-M-N-R-R1-S-T-V-X-Z1	09575	B-F-F1-R-R1-V	09643	B-C-F3-M-R-S-U-V-Z1
09319	A-B-C-C1-C2-E2-F-F1-F2-F3-H1-R-R1-S-U2-V-Z1	09491	A-B-C1-C2-E2-F1-F3-H1-J-L-M-N-R-R1-S-T-V-Z1	09576	B-F-F1-R-R1-V	09645	B-C-F-F1-F3-R-S-U-Z1
09320	A-B-C1-E2-F-F3-H1-M-N-R-R1-S-V-Z1	09494	B-C-C1-F3-M-R-S-U-Z1	09577	B-F3-S-V	09647	B-F1-F3-M-N-R-S-U-Z1
09321	A-B-C1-C2-E2-F-F3-H1-M-N-R-R1-S-V-Z1	09498	B-C1-C2-F-F1-F3-J-L-N-R-R1-T-V-Z1	09578	B-F-F1-F3-R-R1-S-V-Z1	09648	B-F3-N-R-S-U-V-Z1
09330	A-B-C1-C2-D-E-E2-F-F1-F3-H-H1-M-R-R1-S-V-Z1	09501	B-V	09579	B-F-F1-R-R1-V	09649	B-F3-N-R-S-U-Z1
09333	A-B-C-C1-E2-F-F1-F3-H1-I3-M-N-R-R1-S-V-V1-Z-Z1	09502	B-V	09581	B-F-F1-F3-R-R1-S-V	09701	A-B-C1-C2-F-F1-F3-J-L-M-N-R-R1-T-V-Z1
09343	A-B-C1-F-F3-M-N-R-R1-S-V-Z1	09503	B-F-F1-R-R1-V	09582	B-C2-F-F1-F3-R-R1-S-V	09702	B-C-C1-F1-F3-M-R-R1-S-U
09348	A-B-C1-E2-F-F1-F3-H1-I3-M-N-R-R1-S-T-V-Z-Z1	09504	B-V	09583	B-F-F1-F3-I3-J-R-R1-S-V-V1	09704	B-C-V-V1
09352	A-B-C1-E2-F-F3-H1-M-R-R1-S-V-Z1	09505	B-V	09586	B-C2-F-F1-F3-R-R1-S-V	09705	B-C-C1-F1-F3-M-R-R1-S-U
09354	A-B-C1-E2-F-F3-H1-M-R-R1-S-V-Z1	09506	B-V	09587	B-C2-E2-E3-F-F1-F3-R-R1-S-V-Z1	09706	B-C-F3-M-N-R-S-U-V-Z1
09356	A-B-C1-E2-F-F3-H1-M-N-R-V-Z1	09507	B-V	09588	B-F-F1-F3-R-R1-S-V	09707	B-C2-F-F1-F3-J-L-M-N-R-R1-T-V-Z1
09357	A-B-C1-E2-F-F3-H1-M-R-V-Z1	09508	B-F-F1-R-R1-V	09589	B-F-F1-F3-R-S-V	09708	B-C-C1-F1-F3-M-R-R1-S-U
09363	A-B-C1-E2-F-F3-H1-M-R-R1-S-V-Z1	09509	B-F-F1-R-R1-V	09590	B-V	09709	B-C1-C2-E2-F-F1-F3-H-H1-J-L-N-R-R1-T-V-Z1
09365	A-B-C-C1-E2-F-F3-H1-M-N-R-V-Z1	09510	A-B-C1-E2-F-H1-M-R-R1-V-Z1	09591	B-C2-E2-E3-F-F1-F3-R-R1-S-V-Z1	09710	B-C-C1-F-F1-J-L-M-N-R-R1-T-U-V-Z1
09366	A-B-C-C1-E2-F-F1-F3-H-H1-M-R-R1-S-V-Z1	09511	B-F-F1-R-R1-V	09592	B-F-F1-F3-R-R1-S-V	09712	A-B-F-F3-H-R-S-U-V-Z1
09401	B-C-C1-F3-M-R-S-U-Z1	09512	B-F-F1-F3-R-R1-S-V	09593	B-F-F1-F3-R-S-V	09714	B-C-C1-F1-F3-M-R-R1-S-U
09403	B-C-C1-F3-M-R-S-U-Z1	09513	B-F-F1-F3-R-R1-S-V-V1	09594	B-C1-E2-F-F1-F3-R-R1-S-V	09715	B-F-F1-J-L-M-N-R-T-V-Z1
09410	C2-F-F1-F3-N-R-S-U2	09514	B-F-F1-F3-R-R1-S-V-V1	09595	B-F-F1-F3-I3-J-R-R1-S-V-V1-Z1	09716	B-C-C2-F-F1-F3-J-L-M-N-R-R1-T-V-Z1
09421	B-C-C1-F3-M-R-S-U-Z1	09517	B-F-F1-F3-R-R1-S-V	09596	B-F-F1-R-R1-V	09717	A-B-F3-M-R-S-V-W-Z1
09447	B-C-C1-F3-M-R-S-U-V-Z1	09520	B-F-F1-F3-R-R1-S-V	09599	B-F-F1-R-R1-V	09718	B-F-F1-J-L-M-N-R-T-U-V-Z1
09454	B-C-C1-F3-M-R-S-U-V-Z1	09522	B-F-F1-F3-R-S-V	09600	B-C-C2-F-F1-F3-R-S-U-Z1	09719	B-C-D-F3-M-R-S-U-V-Z1
09456	B-C-C1-F3-M-N-R-S-U-V-Z1	09523	B-F-F1-F3-R-R1-S-V	09602	B-C-F-F1-N-R-U-V	09720	B-F3-M-R-S-U-V-Z1
09459	B-C-C1-F3-M-R-S-U-Z1	09524	B-F-F1-R-R1-V	09603	B-C-F-F1-F3-R-S-U-V-Z1	09722	A-B-F-F3-H-N-Q-S-V-Z-Z1
09461	B-C-C1-F3-M-P-R-S-U-Z1	09525	B-F-F1-F3-R-R1-S-V	09604	B-C-F-F1-F3-P-R-S-U-V-Z1	09723	B-C2-F-F1-F3-J-L-M-N-R-R1-T-V-Z1
09463	B-C-C1-F3-M-R-S-U-Z1	09526	B-F-F1-R-R1-V	09605	B-C-D-F3-H-M-R-S-U-V	09724	B-C-C1-F1-F3-M-R-R1-S-U
09464	B-C-C1-F3-R-S-U-Z1	09532	B-F-F1-F3-R-R1-S-V	09606	B-C-D-F3-H-M-R-S-U-V	09725	A-B-F-F3-H-N-Q-R-S-V-V1-Z-Z1
09467	B-E-E1-F-F3-J-L-M-N-R-S-T-V-X-Z1	09533	B-V	09608	B-C-F-F3-N-R-S-U-V-Z1	09726	B-F-F1-J-L-M-N-R-T-U-V-Z1
09468	B-C-C1-F3-M-R-S-U-Z1	09534	B-F-F1-F3-R-R1-S-V	09609	B-C-F-F3-N-R-S-U-Z1	09727	A-B-C1-C2-F-F1-F3-J-L-M-N-R-R1-T-V-Z1
09469	B-C-C1-F3-R-S-U-Z1	09541	A-B-C-F-F3-M-N-S-V-Z1	09610	B-C-F-F1-F3-M-R-S-U-V-Z1	09728	A-B-C-C1-C2-F-F1-F3-J-L-N-R-R1-T-V-Z1
09470	B-C-C1-F3-M-R-S-U-Z1	09542	A-B-C-F-F3-M-N-S-V-Z1	09613	B-C-F-F3-N-R-S-U-V	09729	B-C-F-F3-N-R-R1-S-U-V-Z1
		09543	A-B-C-F-F3-M-N-S-V-Z1	09614	A-B-C1-C2-E2-F-F1-F3-H1-J-L-M-N-R-R1-T-V-W-Z1	09730	A-B-C1-C2-F-F1-F3-J-L-M-N-R-R1-T-V-Z1
		09544	A-B-C-F-F3-M-N-S-V-Z1	09618	B-C-F-F3-R-S-U-V-Z1	09731	A-B-C1-C2-F-F1-F3-J-L-M-N-R-R1-T-V-Z1
		09545	A-B-C-F-F3-M-N-S-V-Z1	09620	B-C-F-F3-R-S-U-V-Z1	09732	B-F-F3-N-S-V-Z-Z1
		09550	B-F-F1-R-R1-V	09621	B-C-F-F3-R-U-Z1	09733	B-F-F3-N-R-S-V-Z
		09554	B-F-F1-R-R1-V	09622	B-C-F-F3-R-S-U-V-Z1	09734	A-B-C-C1-C2-F-F1-F3-I3-J-L-M-N-R-R1-T-V-Z1
		09556	B-F-F1-R-R1-V	09623	B-C-F-F3-R-S-U-V-Z1		
		09564	B-F-F1-R-R1-V	09624	B-C-C2-F-F1-F3-I3-L-N-R-R1-T-U-V-Z-Z1		
		09565	B-F-F1-F3-R-R1-S-V	09625	B-C-F-F3-N-R-S-U-Z1		
		09566	B-C2-E2-E3-F-F1-F3-R-R1-S-V-Z1	09627	B-C-F-F3-R-S-U-V-Z1		
		09567	B-C2-E2-E3-F-F1-F3-R-R1-V-Z1	09630	B-C-F-F3-R-S-U-V		
		09568	B-V	09633	B-C-D-F-F1-F3-M-R-S-U-U1-U2-U3-V-Z1		
		09569	B-C2-E2-E3-F-F1-F3-R-R1-V-Z1				

APO/ FPO/ DPO	See Restrictions	APO/ FPO/ DPO	See Restrictions	APO/ FPO/ DPO	See Restrictions	APO/ FPO/ DPO	See Restrictions
09735	B-F3-N-R-S-V-Z-Z1	09807	A-B-C1-E2-F-F1-F3-H1-I3-M-N-R-R1-S-T-V-Z-Z1	09845	A-B-C1-C2-E3-F-F1-F3-J-L-M-N-R-R1-T-V-Z1	09903	B-C1-E2-F1-F3-S-V-Z1
09736	A-B-C1-F-F1-F3-J-L-M-N-R-R1-T-V-Z1	09808	A-B-C1-C2-E2-F-F1-F3-H-H1-J-L-N-R-R1-T-V-Z1	09846	A-B-C1-C2-F-F1-F3-J-L-N-R-R1-T-V-Z1	09904	B-C1-E2-F1-F3-S-V-Z1
09737	A-B-C1-C2-F-F1-F3-I3-J-L-M-N-R-R1-T-V-W-Y-Z-Z1	09809	B-C1-C2-E3-F-F1-F3-J-L-N-T-V-Z1	09847	B-C-C2-F-F1-F3-J-L-M-N-R-R1-S-T-V-Z1	09908	A-B-F-F1-F3-N-R-R1-S-V-Z1
09738	A-B-C1-C2-F-F1-F3-J-L-M-N-R-R1-T-V-Z1	09810	A-B-F-F1-F3-N-R-S-V-Z1	09848	A-B-F-F3-M-R-S-V-Z1	09909	A-B-F-F1-F3-N-R-R1-S-V-V1-Z1
09739	A-B-C1-C2-F-F1-F3-J-L-M-N-R-R1-T-V-Z1	09811	A-B-C-C2-E-E2-E3-F1-F3-H-H1-J-M-N-R-R1-S-U-V-Z1	09853	B-C1-E2-F-F1-F3-H1-N-R-R1-S-U2-V-Z1	09974	B-F1-F3-J-L-M-N-R-S-T-U2-V-X-Z1
09741	A-B-C1-C2-E2-F-F1-F3-H1-J-L-M-N-R-R1-T-V-W-Y-Z1	09812	B-E2-E3-F-F1-I-J-L-N-R-T-U-V-Z-Z1	09854	A-B-C1-C2-F-F1-F3-J-L-N-R-R1-S-T-V-Z1	09975	B-F1-F3-I3-L-M-N-R-S-T-U2-V-X-Z1
09742	A-B-C2-F-F1-F3-J-L-M-N-R-S-T-V-Z1	09813	A-B-C1-C2-E2-E3-F-F1-F3-J-L-N-R-R1-T-V-Z1	09855	A-B-C-C1-C2-E2-F-F1-F3-H1-M-R-R1-S-U2-V-Z1	09976	B-F1-F3-J-L-M-N-R-S-T-U2-V-X-Z1
09743	A-B-F-F3-H-N-Q-R-S-V-Z-Z1	09814	B-C2-E2-E3-F-F1-F3-I3-J-L-N-R-R1-T-V-Z1	09856	B-C-C1-C2-F-F1-F3-H1-J-L-M-N-S-T-V-Z1	09977	B-F1-F3-J-L-M-N-R-S-T-U2-V-X-Z1
09744	A-B-C1-C2-F-F1-F3-J-L-M-N-R-R1-T-V-Z1	09816	A-B-C1-C2-E2-E3-F-F1-F3-J-L-N-R-R1-T-V-Z1	09857	A-B-C2-E2-F-F1-F3-13-L-M-N-R-R1-S-T-V-Z1	34001	A-B-C1-C2-F-F1-F3-J-L-M-N-R-R1-S-T-V-Z1
09745	A-B-F-F1-F3-M-N-R-R1-S-V-Z1	09817	A-B-C1-C2-E2-E3-F-F1-F3-H-H1-J-L-M-N-R-R1-T-V-Z1	09858	A-B-C-C1-C2-E2-E3-F1-F3-H-H1-J-M-N-R-R1-S-U-V-Z1	34002	B-C1-C2-F-F1-F3-J-L-M-N-R-R1-T-V-Z1
09748	A-B-C1-C2-F-F1-F3-J-L-M-N-R-R1-T-V-Z1	09818	A-B-C-F-F3-M-S-V-Z1	09859	B-C-C1-C2-E2-E3-F-F1-F3-H1-R-R1-S-U-Z1	34004	B-C1-C2-F-F1-F3-J-L-M-N-R-R1-T-V-Z1
09749	A-B-F-F3-H-N-R-S-U-V-Z1	09820	A-B-C2-F-F1-F3-H-H1-J-L-M-N-R-R1-T-V-Z1	09860	A-B-C2-F-F1-F3-J-L-M-N-R-R1-S-T-V-Z1	34007	B-F-F1-H-J-M-N-R-R1-V-Z1
09750	A-B-C1-C2-F-F1-F3-J-L-M-N-R-R1-T-V-Z1	09821	A-B-C-F-F3-N-R-S-V-Z1	09862	A-B-C-C2-F-F1-F3-I3-L-M-N-R-R1-S-T-V-X-Z1	34008	B-C1-C2-D-E1-F-F1-H-H1-J-L-M-N-R-R1-T-V-Z1
09751	B-C-D-E-F3-H-M-R-S-U	09822	A-B-C-F-F3-M-R-S-V-Z1	09864	A-B-C-C1-C2-E2-F1-F3-L-M-N-R-R1-S-T-V-W-Z1	34011	B-C1-C2-E2-F-F1-F3-J-L-M-N-R-R1-T-V-Z1
09752	B-C-D-F1-F3-H-R-S-U	09823	A-B-C1-C2-F-F1-F3-J-L-M-N-R-R1-T-V-Z1	09865	A-B-F3-R-S-U-V-Z1	34020	B-C1-C2-F-F1-F3-J-L-M-N-R-R1-T-V-Z1
09753	A-B-F-F3-N-R-S-V-Z1	09824	A-B-C-F-F3-M-R-S-V-Z1	09867	A-B-C-C1-C2-E2-F1-F3-L-M-N-R-R1-S-T-V-W-Z1	34021	B-C1-C2-F-F1-F3-J-L-M-N-R-R1-T-V-Z1
09754	A-B-F-F3-H-L-N-Q-R-S-V-Z-Z1	09825	A-B-C1-C2-F-F1-F3-J-L-M-N-R-R1-T-V-Z1	09868	A-B-E1-E2-E3-F1-F3-M-N-R-S-U-V-Z1	34022	B-C1-C2-F-F1-F3-J-L-M-N-R-R1-T-V-Z1
09755	A-B-C-C1-D-F-F1-F3-J-L-M-N-Q-R-R1-S-T-V-Z1	09826	A-B-C1-C2-E1-E2-E3-F-F1-F3-J-L-M-N-R-R1-T-V-W-Z1	09869	A-B-C1-C2-E2-F1-F3-L-M-N-R-R1-S-T-V-W-Z1	34023	B-C1-C2-F-F1-F3-J-L-M-N-R-R1-T-V-Z1
09758	A-B-F-F1-F3-M-N-R-R1-S-V-Z1	09827	A-B-F-F1-J-L-M-N-R-T-V-Z1	09870	A-B-C1-C2-E2-F-F1-F3-H1-I3-L-M-N-R-R1-S-T-U4-V-Z-Z1	34024	B-C1-C2-F-F1-F3-J-L-M-N-R-R1-T-V-Z1
09759	A-B-C-C1-C2-E2-F-F1-F3-J-L-N-R-R1-T-V-Z1	09828	A-B-C1-C2-F-F1-F3-I3-L-N-R-R1-T-V-Z1	09873	A-B-C1-C2-E2-F-F1-F3-H1-I3-L-M-N-R-R1-S-T-U-U4-V-Z-Z1	34025	B-F-F1-F3-J-L-M-N-R-R1-T-V-Z1
09761	B-F-F1-F3-M-R-R1-S-V-Z-Z1	09829	B-C-N-R-V-Z1	09874	A-B-C1-C2-E2-F-F1-F3-H1-I3-L-M-N-R-R1-S-T-U-U4-V-Z-Z1	34030	B-C1-C2-F-F1-F3-J-L-M-N-R-R1-T-V-Z1
09762	A-B-C2-E3-F-F1-F3-J-L-N-R-R1-T-V-Z1	09830	B-C-F-F1-F3-J-L-M-N-R-R1-S-T-V-Z1	09875	A-B-C1-C2-E2-F-F1-F3-H1-I3-L-M-N-R-R1-S-T-U-U4-V-Z-Z1	34031	B-C1-C2-F-F1-F3-J-L-M-N-R-R1-T-V-Z1
09769	A-B-C-C1-C2-F-F1-F3-J-L-M-N-R-R1-T-V-Z1	09831	B-C1-C2-F-F1-F3-J-L-N-R-R1-T-V-Z1	09877	A-B-C-C2-E-E2-E3-F1-F3-H-H1-J-M-N-R-R1-S-U-V-Z1	34032	B-C1-C2-F-F1-F3-J-L-M-N-R-R1-T-V-Z1
09777	A-B-C-C1-C2-E1-F-F1-F3-J-L-M-N-R-R1-T-V-Z1	09832	B-C1-E2-F1-F3-N-R-S-V-Z1	09880	A-B-C1-C2-E2-F-F1-F3-H1-J-L-N-R-R1-S-T-U-V-Z1	34033	B-C1-C2-F-F1-F3-I3-L-M-N-R-T-V-Z1
09780	A-B-F-F3-H-N-R-S-V	09833	B-C1-E2-F1-F3-N-R-S-V-Z1	09883	A-B-C1-C2-E2-F-F1-F3-R-R1-S-U-Z1	34034	B-C1-C2-F-F1-F3-I3-L-M-N-R-R1-T-V-Z1
09789	A-B-C2-F-F3-N-R-S-V-Z1	09834	B-C-C2-E2-E3-F-F1-F3-R-R1-S-U-Z1	09886	A-B-C1-C2-F-F1-F3-J-L-M-N-R-R1-V-Z1	34035	B-C1-C2-F-F1-F3-H-J-L-M-N-R-R1-T-V-Z1
09801	A-B-C1-E2-F-F3-H1-M-N-R-R1-S-V-Z1	09836	A-B-C1-C2-F-F1-F3-J-L-M-N-R-R1-V-Z1	09887	B-E2-E3-F1-F3-R-S-V-Z1	34036	B-C1-C2-F-F1-F3-J-L-M-N-R-R1-T-V-Z1
09802	A-B-C-C2-D-F-F1-F3-H-H1-I3-L-M-N-R-R1-S-T-V-W-Z-Z1	09837	B-E2-E3-F1-F3-R-S-V-Z1	09889	B-C-C2-E2-E3-F-F1-F3-R-S-U-Z1	34037	B-C-C1-C2-F-F1-F3-H-J-L-M-N-R-R1-T-V-Z1
09803	A-B-C-C2-E-E2-E3-F1-F3-H-H1-J-M-N-R-R1-S-U-V-Z1	09838	B-C-C2-E2-E3-F-F1-F3-R-S-U-Z1	09892	A-B-C1-C2-E2-F-F1-F3-J-L-M-N-R-R1-T-V-Z1	34039	B-C1-C2-F-F1-J-L-M-N-T-V-Z1
09804	A-B-F-F1-F3-M-N-R-S-V-Z1	09841	A-B-F3-N-R-S-U-Z1	09895	A-B-C1-C2-E2-F-F1-F3-J-L-M-N-R-T-V-W-Z1	34041	B-C1-C2-F-F1-F3-J-L-M-N-R-R1-T-V-Z1
09805	B-C-C2-E2-E3-F-F1-F3-R-R1-S-Z1	09842	A-B-C1-C2-F-F1-F3-J-L-N-R-R1-T-V-Z1	09902	A-B-C1-E2-F-F3-H1-M-R-R1-S-V-Z1	34042	A-B-C-F-F1-F3-M-N-R-S-U-V-W-Z1
09806	A-B-C1-C2-E2-F-F1-F3-H1-J-L-M-N-R-R1-T-V-Z1	09844	A-B-C1-C2-F-F1-F3-J-L-M-N-R-R1-T-V-Z1			34050	B-V
						34051	B-V
						34052	B-V
						34053	B-V
						34054	B-V

APO/ FPO/ DPO	See Restrictions	APO/ FPO/ DPO	See Restrictions	APO/ FPO/ DPO	See Restrictions	APO/ FPO/ DPO	See Restrictions
34055	B-C1-C2-F-F1-F3-J-L-M-N-R-R1-T-V-Z1	96271	A-F-F3-M-P-R-S-U	96388	B-F3-M-R-S-W	96604	B-V
34058	B-F-F1-F3-R-R1-S-V-Z1	96273	A-B-F-F1-F3-M-R-S-U	96389	B-M-W	96605	B-V+B559
34060	B-C1-C2-E2-F-F1-F3-J-L-M-N-R-R1-T-V-Z1	96275	A-B-F-F1-F3-M-R-S-U	96401	B-C-F-F3-N-R-S-V-V1-Z1	96606	B-F3-R-S-V
34066	B-C1-C2-F-F1-F3-I3-J-L-M-N-R-R1-S-T-V-X-Z1	96276	A-B-C-F1-R	96502	A-C1-F-F1-F3-M-N-Q-R-R1-S-T-U2-V	96607	B-V
34067	B-C1-C2-F-F1-F3-J-L-M-N-R-R1-S-T-V-X-Z1	96278	A-B-C-F1-F3-R-S-U	96504	A-B-C-C1-C2-F-F1-F3-I3-L-M-N-R-R1-T-V-W-Z1	96608	B-E2-F-H1-R1-U2-V-Z1
34068	B-C1-C2-F-F1-F3-J-L-M-N-R-R1-S-T-V-X-Z1	96283	A-B-F-F1-F3-S-U	96505	A-B-C-C1-C2-F-F1-F3-I3-L-M-N-R-R1-S-T-V-W-Z1	96609	B-E2-F-H1-R1-U2-V-Z1
34069	B-C1-C2-F-F1-F3-I3-J-L-M-N-R-R1-S-T-V-X-Z1	96284	A-B-F-F1-F3-R-S-U	96507	A-B-C-C1-C2-F-F1-F3-I3-L-M-N-R-R1-S-T-V-W-Z1	96610	B-E2-F-H1-R1-U2-V-Z1
34078	B-F1-F3-N-R-S-V-Z1	96297	A-B-F-F1-F3-R-S-U	96510	A-B-C1-C2-F-F1-H-J-L-M-N-T-V-Z1	96611	B-E2-F-H1-R1-U2-V-Z1
34080	B-F-F1-R-R1-V	96300	A-B-F3-M-R-S-V-Z1	96511	B-I3-N-V	96612	B-V
34081	B-F-F1-R-R1-V	96301	A-B-F-F3-M-N-R-S-U2-W	96515	B-I3-N-V	96613	B-V
34082	B-F-F1-R-R1-V	96303	B-C1-C2-F-F1-H-J-L-M-N-T-V-W-Z1	96516	B-C-D-E1-F-F1-F3-H1-M-N-R-S-T-Z1	96615	B-F-F1-R-R1-V
34083	B-F-F1-R-R1-V	96306	B-F-F1-F2-F3-H-M-R-S-W-Z1	96517	B-C-D-E1-E2-F-F1-F3-H-H1-M-N-R-S-T-Z1	96616	B-C2-F-F1-F3-R-R1-S-V
34084	B-F-F1-R-R1-V	96310	B-F3-M-R-S-W	96520	B-F-N-U3-V	96619	B-F1-F3-R-S-V
34085	B-F-F1-F3-R-R1-S-V	96311	B-F3-M-R-S-W	96521	B-C1-C2-F-F1-J-L-M-N-R-R1-S-T-V-Z1	96620	B-F-F1-F3-R-R1-S-V
34086	B-F-F1-F3-R-R1-S-V	96315	B-F-F1-F3-H-M-R-S-W	96530	A-B-C1-C2-F-F1-H-H1-J-L-M-N-R-R1-S-T-V-Z1	96628	B-F-F1-F3-R-R1-S-V
34087	B-E2-F-F1-F3-R-R1-S-V	96319	B-C-F3-M-R-S-V-W	96531	A-B-C-F-F1-F3-H-M-N-R-S-U-V	96629	B-F-F1-F3-R-R1-S-V
34088	B-F-F1-R-R1-V	96321	B-F-F1-F2-F3-H-M-R-S-W-Z1	96532	A-B-C1-C2-F-F1-H-J-L-M-N-R-R1-S-T-V-Z1	96632	B-F-F1-F3-R-R1-S-V
34089	B-F-F1-R-R1-S-V	96322	B-F-F1-F2-F3-H-M-R-S-W-Z1	96533	A-B-C-F-F1-F3-H-M-N-R-S-U-V	96633	B-V
34090	B-F-F1-R-R1-V	96326	B-C-F3-M-R-S-W	96534	A-B-C1-C2-F-F1-H-J-L-M-N-R-R1-S-T-V-Z1	96641	B-V
34091	B-E2-E3-F-F1-F3-R-R1-S-V-Z1	96328	B-C-F3-M-R-S-W	96535	A-B-C1-C2-F-F1-H-J-L-M-N-R-R1-S-T-V-Z1	96642	B-V
34092	B-F-F1-F3-R-R1-S-V	96331	A-B-F-F1-F3-J-L-M-N-R-S-U2-W	96537	B-V-Z1	96643	B-F-F1-F3-R-R1-S-V
34093	B-F-F1-F3-R-R1-S-V	96336	B-C-F3-M-R-S-V-W	96540	B-F1-F2-F3-S-Z1	96644	B-V
34094	B-F-F1-F3-R-R1-S-V	96337	B-F-F1-F3-M-R-R1-S-W	96542	B-V-Z1	96645	B-V
34095	B-F-F1-R-R1-V	96338	A-B-F-F3-M-R-S-U2-W	96543	B-F-F1-F2-F3-P-S-V-Z1	96649	B-F-F1-F3-R-R1-S-V
96201	A-B-F-F1-F3-M-R-S-U	96339	A-B-F-F3-M-R-S-U2-W	96544	A-B-F-F1-F2-F3-S-U-Z1	96650	B-F-F1-R-R1-V
96202	A-B-F-F1-F3-M-R-S-U	96343	A-F-F3-M-P-R-S-U2	96548	A-B-C1-C2-F-F1-J-L-M-N-R-R1-S-T-V-Z1	96657	B-F-F1-F3-R-R1-S-V
96203	A-B-F-F1-F3-M-R-S-U	96346	B-F-F1-F2-F3-H-M-R-S-W-Z1	96549	A-B-C1-C2-F-F1-H-J-L-M-N-R-R1-S-T-V-Z1	96660	B-F-F1-F3-R-R1-S-V
96204	A-B-F-F1-F3-M-R-S-U	96347	B-F-F1-F2-H-M-W-Z1	96550	A-B-H-M-N-U-V-Z1	96661	B-F-F1-F3-R-R1-S-V
96205	A-B-F-F1-F3-M-R-S-U	96349	B-F-F1-F2-F3-H-M-R-S-W-Z1	96551	A-B-C1-C2-F-F1-H-J-L-M-N-R-R1-S-T-V-Z1	96662	B-F-F1-F3-R-R1-S-V
96206	A-B-F-F1-F3-M-R-S-U	96350	B-F-F1-F2-F3-H-M-R-S-W-Z1	96552	B-Z1	96663	B-F-F1-F3-R-R1-S-V-V1
96207	A-B-F-F1-F3-M-R-S-U-V	96351	B-F-F1-F2-F3-H-M-R-S-W-Z1	96553	A-B-F-F1-H-M-N-R-U	96664	B-V
96208	A-B-F-F1-F3-M-R-S-U	96355	B-F-F1-F2-M-W-Z1	96554	A-B-C1-C2-F-F1-H-J-L-M-N-R-R1-S-T-V-Z1	96665	B-V
96209	A-B-C1-C2-F-F1-J-L-M-N-T-U-V-Z1	96356	B-C-F3-M-R-S-V-W	96555	A-B-F-F1-F3-H-M-R-S-U	96666	B-F3-R-S-V
96210	A-B-C1-C2-F-F1-F3-I3-L-M-N-R-R1-T-V-Z1	96365	B-C-F3-L-M-R-S-W	96557	A-B-F-F3-M-R-S-V	96667	B-F-F1-F3-R-R1-S-V
96212	B-F-F1-F2-H-M-W-Z1	96367	B-C-F3-M-R-S-W	96562	A-B-F-F3-M-R-S-V	96668	B-F-F1-R-R1-V
96213	A-B-C-F1-F3-R-S-U	96368	B-C-F3-M-R-S-W	96562	A-B-C1-C2-D-E2-E3-F1-H-H1-I3-L-M-N-R-R1-S-T-V-Z1	96669	B-F-F3-R-R1-S-V
96214	A-B-C-F1-F3-R-S-U	96370	B-F-F1-F2-H-M-W-Z1	96577	A-B-F-F3-H-M-N-R-S-U	96670	B-V
96218	A-B-F-F1-F3-M-R-S-U	96371	B-F-F3-M-R-S-W	96578	B-F1-F3-H-J-N-R-S	96671	B-F-F1-F3-R-R1-S-V
96224	A-B-F-F1-F3-M-R-S-U	96372	B-M-W	96595	B-F-F3-R-S-V-Z1	96672	B-F-F1-F3-R-R1-S-V
96251	A-B-F-F1-F3-M-R-S-U	96373	B-M-W	96598	B-F3-I3-N-R-S-V-V1	96673	B-F3-S-V
96257	A-B-F-F1-F3-S-U	96374	B-M-W	96601	B-F3-N-R-S-V	96674	B-F-F1-F3-R-R1-S-V
96258	A-F-F3-M-P-R-S-U	96375	B-F3-M-R-S-W	96602	B-V	96675	B-F-F1-F3-R-R1-S-V
96260	A-B-F-F1-F3-M-R-S-U	96376	B-F3-M-R-S-W	96603	B-V	96677	B-F-F1-F3-R-R1-S-V
96262	A-B-F-F1-F3-R-S-U-V-Z1	96377	B-F-F3-M-R-S-W			96678	B-F-F1-F3-R-R1-S-V
96264	A-B-C-F1-F3-R-S-U	96378	B-M-W			96679	B-F-F1-R-R1-V
96266	A-B-C-F1-F3-R-S-U	96379	B-F3-M-R-S-W			96681	B-V
96267	A-B-C-F1-R-U-V	96380	B-F3-M-R-S-W			96682	B-V
96269	A-B-F1-F2-F3-R-S-U-Z1	96382	B-F-F3-M-R-S-W			96683	B-F-F1-F3-R-R1-S-V
		96384	B-F-F3-M-R-S-W			96686	B-V
		96385	B-F-F3-M-R-S-W			96691	B-F-F1-F3-R-R1-S-V
		96386	B-F3-M-S-W			96692	B-F-F1-F3-R-R1-S-V
		96387	B-F3-M-R-S-W			96693	E2-F-F3-R-R1-S-V
						96694	B-E2-F-F1-F3-I3-J-R-R1-S-V-V1-Z
						96695	B-F-F1-R-R1-V
						96696	B-F-F1-R-R1-V
						96698	B-V



## RESTRICTIONS

## LEGEND

PS Form 2976, *Customs — CN 22 (Old C 1) and Sender's Declaration* (green label)

PS Form 2976-A, *Customs Declaration and Dispatch Note*

PS Form 2976-B, *Priority Mail Express International Shipping Label and Customs Form*

ATF	= Bureau of Alcohol, Tobacco, Firearms, and Explosives
Box C	= Department of State (DOS) contractor personnel
Box R	= Retired military personnel
DPO	= Diplomatic Post Office
MPO	= Military Post Office
PACT	= Prevent All Cigarette Trafficking Act
PAL	= Parcel Airlift
PMEMS	= Priority Mail Express Military Service
PUB 52	= Publication 52, <i>Hazardous, Restricted, and Perishable Mail</i>
SAM	= Space Available Mail
USDA	= United States Department of Agriculture

**Note:** Mail order catalogs are prohibited as SAM or PAL mail.

**A.** Securities, currency, or precious metals, including in their raw, unmanufactured state, are prohibited. Official Mail shipments are exempt from this restriction.

**A1.** Reserved for future use.

**A2.** Reserved for future use.

**B.** Other than for PMEMS and the exceptions listed below, a customs declaration PS Form 2976 or PS Form 2976-A is required for all items weighing 16 ounces or more, and for all items (regardless of weight) containing potentially dutiable mail contents (e.g., merchandise or goods) addressed to or from this ZIP Code. Other than the exceptions listed below, all PMEMS mailpieces (regardless of mail contents or weight) addressed to or from this ZIP Code must bear a properly completed PS Form 2976-B. The surface area of the address side of the mailpiece must be large enough to contain the applicable customs declaration. The following exceptions apply to known mailers, who for this purpose are defined as follows:

- Business mailers who enter volume mailings through business mail entry units or other bulk mail acceptance locations, pay postage through advance deposit accounts, use permit imprints for postage payment, and submit completed postage statements at the time of entry that certify that the mailpieces contain no dangerous materials that are prohibited by postal regulations. Such business mailers are exempt from providing customs documentation on non-dutiable letters and printed matter.
- All federal, state, and local government agencies whose mailings are regarded as "Official Mail." Such agencies are exempt from providing customs documentation, except for any items addressed to an MPO or DPO to which restriction "B2" applies.

**B2.** All federal, state, and local government agencies must complete customs documentation when sending potentially dutiable mail addressed to or from this MPO or DPO.

**C.** Cigarettes and other tobacco products, including tobacco leaves, chewing and pipe tobacco, snuff, and cigars are prohibited, including those that are authorized in Publication 52 under PACT.

**C1.** Obscene and horror articles, images, prints, paintings, cards, films, videotapes, comic books, etc., are prohibited.

**C2.** E-cigarettes and related products (e.g., nicotine liquids, e-liquids, parts, or supplies) are prohibited.

**D.** Coffee is prohibited.

**E.** Medicines (prescription, over-the-counter, vitamins, and supplements) are prohibited when mailed to individuals for human or animal use. This prohibition does not apply when medicines are sent as Official Mail only between specifically designated agencies such as pharmaceutical distributors, hospitals, clinics, and pharmacies.

**E1.** Mailers are responsible to ensure that all medicines and vaccines conform to host nation laws.

**E2.** Any matter depicting nude or seminude persons, pornographic, or sexual items are prohibited. Non-authorized political materials are prohibited. Religious materials contrary to the Islamic faith are prohibited in bulk quantities, but individual items for the personal use of the addressee are permissible.

**E3.** Radio transceivers, cordless/cellular telephones, global positioning systems, scanners, base stations, and handheld transmitters are prohibited.

**F.** Firearms of any type are prohibited, except firearms mailed to or by official U.S. government agencies. This restriction does not apply to firearms mailed from this MPO ZIP Code, provided ATF and USPS regulations are met. Antique firearms do not require an ATF form.

**F1.** Weapons of any type are prohibited.

**F2.** Mailing firearms to or from this MPO ZIP Code is restricted to one shotgun and one single shot .22 caliber rifle per individual.

**F3.** Replica weapons and inert explosive devices (such as grenades) and weapons parts are prohibited.

**G.** Parcels of any class are prohibited.

**H.** Meats, including preserved meats, bones, skin, hair, feathers, horns or hoofs of hoofed animals, and wool samples whether hermetically sealed or not, are prohibited.

**H1.** Pork or pork by-products are prohibited.

**I.** Reserved for future use.

**I1.** Reserved for future use.

**I2.** Reserved for future use.

**I3.** Mail of all classes must fit in a mail sack. Mail may not exceed the following dimensions:

- Maximum length 27 inches.
- Maximum width 14 inches.
- Maximum height 14 inches.

**J.** Standard Post and Parcel Select parcels may not exceed 108 inches in length and girth combined.

**K.** Reserved for future use.

**L.** All Official Mail is prohibited.

**M.** Fruits, vegetables, live animals, and live plants are prohibited.

**N.** Registered Mail service is prohibited.

**O.** Reserved for future use.

**P.** Official Mail only.

**Q.** Mail may not exceed 66 pounds, and size is limited to 42 inches maximum length and 72 inches maximum length and girth combined.

**R.** All alcoholic beverages, including those mailable under Publication 52, Part 421, are prohibited.

**R1.** Materials used in the production of alcoholic beverages (i.e., distilling material, hops, malts, yeast, etc.) are prohibited.

**S.** Synthetic cannabinoids used to stimulate the central nervous system commonly known as "synthetic marijuana," "K2," or "Spice" are prohibited.

**T.** Mailings of household shipments and case lots of food to or from an MPO require military transportation office approval prior to mailing. Mailings to or from a DPO require pre-approval from the Diplomatic Pouch and Mail Director.

**U.** Mail addressed to Retirees (Box R) is limited to 16 ounces and up to a 90-day supply of TRICARE medications. This restriction does not apply to mail endorsed "Free Matter for the Blind or Handicapped."

**U1.** Mail is limited to First-Class Mail items, including audio and video media, weighing 13 ounces or less. This limitation does not apply to Official Mail.

**U2.** Retirees (Box R) are not authorized mail service.

**U3.** Reserved for future use.

**U4.** Mail addressed to Box C is limited to 2 lbs.

**V.** PMEMS is not available.

**V1.** Electronic Delivery status information for Extra Services is not available on *USPS.com*. Manual record of delivery may be available upon request.

**W.** Hermetically sealed packages of meat products bearing USDA certification, such as dried beef, salami, and sausage, may be mailed. 200 grams of tobacco per parcel are permitted duty free.

**X.** Cremated remains are prohibited.

**Y.** Mail is limited to First-Class Mail and Priority Mail items only. This restriction also applies to Official Mail.

**Z.** No outside pieces (OSPs).

**Z1.** The following restriction is applicable only to International Service Centers (ISC)/Exchange Offices. An Anti-Pilferage Seal (Item No O817E or O818A) is required on all pouches and sacks.

— *International Network Operations,  
Global Business, 7-1-21*

## Freely Associated States Restrictions

We list the mailing restrictions for Freely Associated States (FAS) in the Pull-Out section of the *Postal Bulletin*. All FAS Restrictions will be updated periodically.

### Freely Associated States

Mail addressed to freely associated states is subject to certain conditions or restrictions of mailing regarding content, preparation, and handling. The following FAS Restrictions table outlines these conditions as listed by each affected FAS ZIP Code™ through the use of footnoted mailing restrictions codes (see the [Restrictions](#) following the table). For more information on available extra services for FAS destinations, see *Mailing Standards of the United States Postal Service, Domestic Mail Manual (DMM®)*, part 503.

Acceptance clerks must use the table with the Retail System Software terminal to determine which FAS ZIP Codes are active and which conditions of mailing apply.

### FAS Restrictions Table

FAS Table	See Restrictions
96939	A, B
96940	A, B
96941	A, B
96942	A, B
96943	A, B
96944	A, B
96960	A, B
96970	A, B, D
Marshall Islands	C
Federated States of Micronesia	C

### RESTRICTIONS LEGEND

PS Form 2976, *Customs Declaration CN 22 – Sender's Declaration*

PS Form 2976-A, *Customs Declaration and Dispatch Note*

FAS = Freely Associated State

- A.** Bank currency (coin and paper) is prohibited.
- B.** Signature Confirmation, Signature Confirmation Restricted Delivery, Adult Signature Requested, Adult Signature Restricted Delivery, Certified Mail Adult Signature Required, and Certified Mail Adult Signature Restricted Delivery not available.
- C.** Collect on Delivery is prohibited.
- D.** Betel nut (Areca catechu) is prohibited.

— *Asia-Pacific Relations,  
Global Business, 7-1-21*

## Information Security

### Report Information Security Incidents Right Away

An information security incident is any event that could expose USPS® information resources to loss or harm. These events may present themselves through phishing emails, suspicious activity on your device, or lost and stolen equipment.

Similar to a house fire, an information security incident may start out small but can rapidly spread if not quickly addressed. Do not try to fix the problem yourself as you can potentially make the situation worse or cause the incident to spiral out of control. Stay calm and report it using the appropriate Information Technology resources:

- **Stolen or lost device.** To report a lost or stolen device, please visit the Service Catalog at [usps.servicenow.com/sp](https://usps.servicenow.com/sp). Fill out and submit a “Lost or Stolen Device” form.
- **Suspicious email.** Evaluate the email and do not open any attachment or links embedded in the

message. To report it, select the suspicious email and click the “Report to CyberSafe” button on your Outlook toolbar.

- **Other information security incidents.** Email the Cybersecurity Operations Center at [Cyber-Safe@usps.gov](mailto:Cyber-Safe@usps.gov), briefly describe the incident, and provide more information, if requested.

It is our shared responsibility to keep USPS networks and information safe, and you are the best defense against cyberattacks. To help Postal Service™ employees identify and report phishing scams, CyberSafe at USPS® now sends mock phishing emails to USPS email accounts — watch out for and report any suspicious emails!

For more information and tips like these, visit [blue.usps.gov/cyber/communications.htm](https://blue.usps.gov/cyber/communications.htm).

— Corporate Information Security Office,  
Chief Information Security Officer  
and Digital Solutions, 7-1-21

## Mailing and Shipping Services

### Mail Alert

The mailings below will be deposited in the near future. Offices must process this mail according to applicable service standards with the in-home dates in mind. Mailers wishing to participate in these alerts, for mailings of 1 mil-

lion pieces or more, must contact Business Service Network Integration at 202-268-3258 at least 1 month before the requested delivery dates.

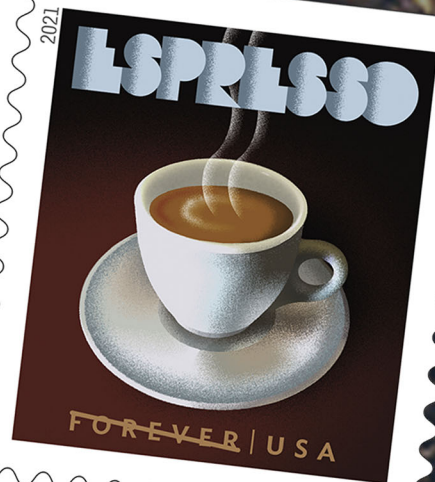
Requested Delivery Dates	Title of Mailing	Class and Type of Mail	Number of Pieces (Millions)	Distribution	Presort Level	Comments
07/07/21–07/10/21	Montgomery Ward	Standard Catalog	1.0	Nationwide	3/5 Digit	Quad Graphics

— Business Customer Support and Services, Sales and Customer Relations, 7-1-21

# USPS® Serves Up *Espresso Drinks*

Forever®  
Stamps

On Sale  
Nationwide:  
April 9, 2021



## Stamp Services

### Special Dedication 50th Anniversary Postmark Announcement

The United States Postal Service® is celebrating 50 years of “Delivering for You” with a special dedication pictorial postmark.

The Postal Service™ officially began operations as an independent agency on July 1, 1971, “Postal Service Day.” On August 12, 1970, President Richard Nixon signed into law the Postal Reorganization Act, the most comprehensive postal legislation since the founding of the republic. The law transformed the cabinet-level Post Office™ Department into a newly independent establishment of the executive branch called the United States Postal Service.

#### Special Dedication Postmark

Only the pictorial postmark shown here is permitted for the United States Postal Service 50 Years Delivering for You Anniversary. The word “Station” or the abbreviation “STA” is required somewhere in the design because it will be a temporary station. Use of any image other than the special pictorial image shown here is prohibited.

#### Guidelines for Finalizing 50 Years Delivering for You Pictorial Postmark Art



To finalize the United States Postal Service 50 Years Delivering for You pictorial postmark art, insert the date, city, state, and ZIP Code™ of the physical location of your event adjacent to the stamp image. Overall dimensions of the pictorial postmark must not exceed 4 inches (horizontally) by 2 inches (vertically). Collectors prefer the dimensions 3-1/2 inches by 1 inch.

The Postal Service must make all special postmarks known to collectors through advance publicity in the Postal Bulletin. Therefore, all special dedication cancellations must be reported to Stamp Services 4 weeks before the event using PS Form 413, *Pictorial Postmark Announcement/Report*. To get a copy of the form, go to [blue.usps.gov/formmgmt/forms/ps413.pdf](https://blue.usps.gov/formmgmt/forms/ps413.pdf).

## Stamp Announcement 21-24: Mid-Atlantic Lighthouses Stamps



©2020 USPS

On August 6, 2021, in Highlands, NJ, the United States Postal Service® will issue the *Mid-Atlantic Lighthouses* stamps (Forever® priced at the First-Class Mail® rate) in five designs, in a pressure-sensitive adhesive (PSA) pane of 20 stamps (Item 481000). These stamps will go on sale nationwide August 6, 2021, and must not be sold or canceled before the first-day-of-issue. **The *Mid-Atlantic Lighthouses* pane of 20 stamps may not be split and the stamps may not be sold individually.**

The Postal Service™ concludes its long-running series celebrating American lighthouses with five new stamps honoring mid-Atlantic lighthouses. Each stamp features an original acrylic painting of one of the following lighthouses:

- Thomas Point Shoal, Maryland;
- Montauk Point, New York;
- Harbor of Refuge, Delaware;
- Navesink, New Jersey; and
- Erie Harbor, Pennsylvania.

Howard Koslow (1924–2016) was the artist for these stamps as well as previous issuances in the *Lighthouses* series. *Mid-Atlantic Lighthouses* were the last stamps he illustrated for the Postal Service. Greg Breeding art directed the project.

### Availability to Post Offices: Item 481000, Mid-Atlantic Lighthouses (Forever Priced at the First-Class Mail Rate) PSA Pane of 20 Stamps

Stamp Fulfillment Services will not make an automatic push distribution to Post Offices. Post Offices may begin ordering stamps before the first-day-of-issue through SFS Web at [sfsweb.usps.gov](https://sfsweb.usps.gov).

### How to Order the First-Day-of-Issue Postmark

Customers have 120 days to obtain the first-day-of-issue postmark by mail. They may purchase new stamps at their local Post Office™ or at The Postal Store® website at [usps.com/shop](https://usps.com/shop). They must affix the stamps to envelopes of their choice, address the envelopes (to themselves or others), and place them in a larger envelope addressed to:

FD01 – Mid-Atlantic Lighthouses Stamps  
 USPS Stamp Fulfillment Services  
 8300 NE Underground Drive, Suite 300  
 Kansas City, MO 64144-9900

After applying the first-day-of-issue postmark, the Postal Service will return the envelopes through the mail. There is no charge for the postmark up to a quantity of 50. There is a 5-cent charge for each additional postmark over 50. All orders must be postmarked by December 6, 2021.

### How to Order First-Day Covers

The Postal Service also offers first-day covers for new stamp issues and Postal Service stationery items postmarked with the official first-day-of-issue cancellation. Each item has an individual catalog number and is offered in the *USA Philatelic* catalog and online at [usps.com/shop](https://usps.com/shop). Customers may register to receive a free *USA Philatelic* catalog online at [usps.com/philatelic](https://usps.com/philatelic).

**Locally produced items are not authorized. Only merchandise that has been approved and assigned an item number by Headquarters Retail Marketing may be produced and sold.**

Issue:	<i>Mid-Atlantic Lighthouses</i> Stamps
Item Number:	481000
Denomination & Type of Issue:	First-Class Mail Forever
Format:	Pane of 20 (5 designs)
Series:	<i>Lighthouses</i>
Issue Date & City:	August 6, 2021, Highlands, NJ 07732
Art Director:	Greg Breeding, Charlottesville, VA
Designer:	Greg Breeding, Charlottesville, VA
Artist:	Howard Koslow
Modeler:	Sandra Lane / Michelle Finn
Manufacturing Process:	Offset
Printer:	Banknote Corporation of America
Press Type:	Alprinta 74
Stamps per Pane:	20
Print Quantity:	40,000,000 stamps
Paper Type:	Phosphor, Block Tag
Adhesive Type:	Pressure-sensitive
Colors:	Black, Cyan, Magenta, Yellow
Stamp Orientation:	Vertical
Image Area (w x h):	0.84 x 1.42 in. / 21.336 x 36.068 mm
Overall Size (w x h):	0.98 x 1.56 in. / 24.892 x 39.624 mm
Full Pane Size (w x h):	5.92 x 7.5 in. / 150.368 x 190.5 mm
Press Sheets Size (w x h):	11.84 x 22.5 in. / 300.736 X 571.5 mm
Plate Size:	240 stamps per revolution
Plate Number:	"B" followed by four (4) single digits in bottom two corners
Marginal Markings:	
Front:	Header: <i>Mid-Atlantic Lighthouses</i> : Seventh In A Series • Plate number in bottom two corners
Back:	©2020 USPS • USPS logo • 2 barcodes (481000) • Plate position diagram (6) • Promotional text

— *Stamp Services, Marketing, 7-1-21*

## Stamp Announcement 21-25: Missouri Statehood Stamp



©2020 USPS

On August 10, 2021, in Jefferson City, MO, the United States Postal Service® will issue the *Missouri Statehood* stamp (Forever® priced at the First-Class Mail® rate) in one design, in a pressure-sensitive adhesive (PSA) pane of 20 stamps (Item 481100). This stamp will go on sale nationwide August 10, 2021, and must not be sold or canceled before the first-day-of-issue.

This stamp celebrates the bicentennial of Missouri statehood. Missouri became the 24th state in the Union on August 10, 1821. The stamp art is a photograph taken of Bollinger Mill State Historic Site. The photo shows the multi-story mill, which dates to the Civil War period, as well as the Burfordville Covered Bridge, Missouri's oldest covered bridge and one of only four that remain in the state. Noted landscape photographer Charles Gurche, who took this shot, began his photography career in Missouri. Art director Greg Breeding designed the stamp with an existing photograph by Gurche.

### Availability to Post Offices: Item 481100, Missouri Statehood (Forever Priced at the First-Class Mail Rate) PSA Pane of 20 Stamps

Stamp Fulfillment Services will make an automatic push distribution to Post Offices (in Missouri only) of a quantity to cover approximately 30 days of sales. Distribution quantities for the automatic push distribution are available by logging on to SFS Web at [sfsweb.usps.gov](https://sfsweb.usps.gov). Post Offices may begin ordering stamps before the first-day-of-issue through SFS Web. However, offices must check the website noted above to determine the amount they will receive on their automatic push distribution.

### How to Order the First-Day-of-Issue Postmark

Customers have 120 days to obtain the first-day-of-issue postmark by mail. They may purchase new stamps at their local Post Office™ or at The Postal Store® website at [usps.com/shop](https://usps.com/shop). They must affix the stamps to envelopes

of their choice, address the envelopes (to themselves or others), and place them in a larger envelope addressed to:

FDOI – Missouri Statehood Stamp  
USPS Stamp Fulfillment Services  
8300 NE Underground Drive, Suite 300  
Kansas City, MO 64144-9900

After applying the first-day-of-issue postmark, the Postal Service™ will return the envelopes through the mail. There is no charge for the postmark up to a quantity of 50. There is a 5-cent charge for each additional postmark over 50. All orders must be postmarked by December 10, 2021.

### How to Order First-Day Covers

The Postal Service also offers first-day covers for new stamp issues and Postal Service stationery items postmarked with the official first-day-of-issue cancellation. Each item has an individual catalog number and is offered in the *USA Philatelic* catalog and online at [usps.com/shop](https://usps.com/shop). Customers may register to receive a free *USA Philatelic* catalog online at [usps.com/philatelic](https://usps.com/philatelic).

**Locally produced items are not authorized. Only merchandise that has been approved and assigned an item number by Headquarters Retail Marketing may be produced and sold.**

Issue:	<i>Missouri Statehood</i> Stamp
Item Number:	481100
Denomination & Type of Issue:	First-Class Mail Forever
Format:	Pane of 20 (1 design)
Series:	<i>Statehood</i>
Issue Date & City:	August 10, 2021, Jefferson City, MO 65101
Art Director:	Greg Breeding, Charlottesville, VA
Designer:	Greg Breeding, Charlottesville, VA
Existing Photo:	Charles Gurche
Modeler:	Sandra Lane / Michelle Finn
Manufacturing Process:	Offset, Microprint
Printer:	Banknote Corporation of America
Press Type:	Gallus RCS
Stamps per Pane:	20
Print Quantity:	18,000,000 stamps
Paper Type:	Phosphor, Block Tag
Adhesive Type:	Pressure-sensitive
Colors:	Black, Cyan, Magenta, Yellow
Stamp Orientation:	Horizontal
Image Area (w x h):	1.42 x 0.84 in. / 36.068 x 21.336 mm
Overall Size (w x h):	1.56 x 0.98 in. / 39.624 x 24.892 mm
Full Pane Size (w x h):	7.24 x 5.92 in. / 183.896 x 150.368 mm
Press Sheets Size (w x h):	11.84 x 21.72 in. / 300.736 X 551.688 mm
Plate Size:	120 stamps per revolution
Plate Number:	"B" followed by four (4) single digits in all corners
Marginal Markings:	
Front:	Plate number in all corners
Back:	©2020 USPS • USPS logo • 2 barcodes (481100) • Plate position diagram (6) • Promotional text



Stamp Announcement 21-26: Backyard Games Stamps



©2020 USPS

On August 12, 2021, in Rosemont, IL, the United States Postal Service® will issue the *Backyard Games* stamps (Forever® priced at the First-Class Mail® rate) in eight designs, in a pressure-sensitive adhesive (PSA) pane of 16 stamps (Item 481200). These stamps will go on sale nationwide August 12, 2021, and must not be sold or canceled before the first-day-of-issue. **The *Backyard Games* pane of 16 stamps may not be split and the stamps may not be sold individually.**

With this issuance, the Postal Service™ celebrates the many games Americans play for outdoor recreation. A pane of 16 stamps features eight unique digital designs of the following backyard games:

- Badminton,
- Bocce,
- Cornhole,
- Croquet,
- Flying disc,
- Horseshoes,
- Tetherball, and

- A variation on pick-up baseball.

Greg Breeding was the art director. Mike Ryan designed the stamps with original artwork by Mick Wiggins.

**Availability to Post Offices: Item 481200, Backyard Games (Forever Priced at the First-Class Mail Rate) PSA Pane of 16 Stamps**

Stamp Fulfillment Services will not make an automatic push distribution to Post Offices. Post Offices may begin ordering stamps before the first-day-of-issue through SFS Web at [sfsweb.usps.gov](https://sfsweb.usps.gov).

**How to Order the First-Day-of-Issue Postmark**

Customers have 120 days to obtain the first-day-of-issue postmark by mail. They may purchase new stamps at their local Post Office™ or at The Postal Store® website at [usps.com/shop](https://usps.com/shop). They must affix the stamps to envelopes of their choice, address the envelopes (to themselves or others), and place them in a larger envelope addressed to:

FDI – Backyard Games Stamps  
 USPS Stamp Fulfillment Services  
 8300 NE Underground Drive, Suite 300  
 Kansas City, MO 64144-9900

After applying the first-day-of-issue postmark, the Postal Service™ will return the envelopes through the mail. There is no charge for the postmark up to a quantity of 50. There is a 5-cent charge for each additional postmark over 50. All orders must be postmarked by December 12, 2021.

### How to Order First-Day Covers

The Postal Service also offers first-day covers for new stamp issues and Postal Service stationery items postmarked with the official first-day-of-issue cancellation. Each item has an individual catalog number and is offered in the *USA Philatelic* catalog and online at [usps.com/shop](https://usps.com/shop). Customers may register to receive a free *USA Philatelic* catalog online at [usps.com/philatelic](https://usps.com/philatelic).

**Locally produced items are not authorized. Only merchandise that has been approved and assigned an item number by Headquarters Retail Marketing may be produced and sold.**

Issue:	<i>Backyard Games</i> Stamps
Item Number:	481200
Denomination & Type of Issue:	First-Class Mail Forever
Format:	Pane of 16 (8 designs)
Series:	N/A
Issue Date & City:	August 12, 2021, Rosemont, IL 60018
Art Director:	Greg Breeding, Charlottesville, VA
Designer:	Mike Ryan, Charlottesville, VA
Illustrator:	Mick Wiggins, Little Rock, AR
Modeler:	Sandra Lane/Michelle Finn
Manufacturing Process:	Offset
Printer:	Banknote Corporation of America
Press Type:	Gallus RCS
Stamps per Pane:	16
Print Quantity:	25,600,000 stamps
Paper Type:	Phosphor, Block Tag
Adhesive Type:	Pressure-sensitive
Colors:	Black, Cyan, Magenta, Yellow
Stamp Orientation:	Vertical
Image Area (w x h):	0.77 x 1.05 in./ 19.558 x 26.67 mm
Overall Size (w x h):	0.91 x 1.19 in./ 23.114 x 30.226 mm
Full Pane Size (w x h):	4.3 x 6.875 in./ 109.22 x 174.625 mm
Press Sheets Size (w x h):	22 x 13.75 in./ 558.8 x 349.25 mm
Plate Size:	160 stamps per revolution
Plate Number:	"B" followed by four (4) single digits in two corners
Marginal Markings:	
Front:	Header: <i>Backyard Games</i> • Plate number in bottom two corners
Back:	©2020 USPS • USPS logo • 2 barcodes (481200) • Plate position diagram (10) • Promotional text

### Pictorial Postmarks Announcement

As a community service, the Postal Service™ offers pictorial postmarks to commemorate local events celebrated in communities throughout the nation. A list of events for which pictorial postmarks are authorized appears on the following pages. The sponsor of the pictorial postmark appears in italics under the date. Also provided are illustrations of these postmarks.

People attending these local events may obtain the postmark in person at the temporary Post Office™ station established there. Those who cannot attend the event but who wish to obtain the postmark may submit a mail order request. Pictorial postmarks are available only for the dates indicated, and *requests must be postmarked no later than 30 days following the requested pictorial postmark date.*

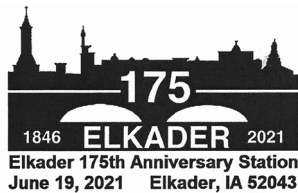
All requests must include a stamped envelope or postcard bearing at least the minimum First-Class Mail® postage. Items submitted for postmark may not include

postage issued after the date of the requested postmark. Such items will be returned unserved.

Customers wishing to obtain a postmark must affix stamps to any envelope or postcard of their choice, address the envelope or postcard to themselves or others, insert a card of postcard thickness in envelopes for sturdiness, and tuck in the flap. Place the envelope or postcard in a larger envelope and address it to: Pictorial Postmarks, followed by the Name of the Station, Address, City, State, ZIP+4® Code, as listed next to the postmark.

Customers can also send stamped envelopes and postcards without addresses for postmark, as long as they supply a larger envelope with adequate postage and their return address. After applying the pictorial postmark, the Postal Service returns the items (with or without addresses) under addressed protective cover.

The following pictorial postmarks have been extended for 30 days:



June 19, 2021  
*Elkader Area Chamber of Commerce*  
 Elkader 175th Anniversary Station  
 Postmaster  
 PO Box 9998  
 Elkader, IA 52403-9998



June 24, 2021  
*Camera de Representantes*  
 Plaza de la Democracia Camara de Representantes Station  
 Marketing Office/Supervisor SDO  
 585 Avenue FD Roosevelt, Suite 223  
 San Juan, PR 00936-9681



June 25, 2021  
*USS New Jersey Chapter #90, Universal Ship Cancellation Society*  
 Naval Air Station  
 Postmaster  
 38 Landsdowne Road  
 Lakehurst, NJ 08733-9998



July 1, 2021

*Denton Farm Park*  
Southeast Old Threshers  
Reunion Station  
Postmaster  
PO Box 9998  
Denton, NC 27239-9998



July 3, 2021

*Seward Fourth of July  
Celebration Committee*  
4th of July Station  
Postmaster  
507 Main Street  
Seward, NE 68434-9998



July 2, 2021

*Wild Free Roaming Horses  
and Burros Act, Foal –  
Friends of a Legacy*  
Official Wild Horse Highway  
Station  
Postmaster  
401 Greybull Avenue  
Greybull, WY 82426-9998



July 4, 2021

*Lions Club*  
Pony Express Station  
Postmaster  
115 North Pine Street  
Ten Sleep, WY 82442-9998



July 3–10, 2021

*Union County Indiana  
Bicentennial 2021 Planning  
Committee*  
Bicentennial Station  
Postmaster  
29 East Union Street  
Liberty, IN 47353-9998



July 4, 2021

*Fourth of July Celebration  
Committee*  
4th of July Station  
Postmaster  
507 Main Street  
Seward, NE 68434-9998



July 3, 2021

*City of Laddonia*  
Laddonia Ballpark Station  
Postmaster  
501 East 2nd Street  
Laddonia, MO 63352-  
99988



July 4, 2021

*City of Columbia, MO*  
COMO 200 Bicentennial  
Station  
General Clerk  
511 East Walnut, Room 111  
Columbia, MO 65201-9998

— Stamp Services,  
Marketing, 7-1-21

### How to Order the First-Day-of-Issue Digital Color or Traditional Postmarks

Customers have 120 days to obtain the first-day-of-issue postmarks by mail. Each cover must have sufficient postage to meet First-Class Mail® requirements. Customers may purchase new stamps at their local Post Office™, by phone at 800-782-6724, or on The Postal Store® website at [usps.com/shop](https://usps.com/shop).

#### Digital Color Postmarks

Only select stamp issues offer a digital color postmark. Customers may submit #6 or #10 envelopes constructed of paper rated as "laser safe." The Postal Service™ recommends envelopes of 80-pound Accent Opaque, acid-free, 9/16-inch side seams with no glue on the flap. The maximum size of all digital color postmarks is 2 inches (vertically) by 4 inches (horizontally). Allow sufficient space on the envelope to accommodate the postmark. Do not use self-adhesive labels for addresses on the envelope. Two test envelopes must be included. There is a minimum of 10 envelopes at 50 cents per postmark required at the time of servicing. Customers must submit a check, money order, or credit card for payment.

The Postal Service reserves the right to not accept hand-painted and other cachet envelopes that are not compatible with our digital color postmark equipment. The Postal Service also reserves the right to substitute traditional black rubber postmarks if use of nonspecified envelopes results in poor image quality or damage to equipment.

Customers must affix the stamps to the envelopes and address them to themselves or others for return through the mail. Or, they may include an additional self-addressed return envelope, large enough to accommodate their canceled items, with sufficient postage affixed for return of

their postmarked items. Address customer requests for digital color postmarks to:

FDOI – (Name of Stamp Issue)  
USPS Stamp Fulfillment Services  
8300 NE Underground Drive, Suite 300  
Kansas City, MO 64144-9900

After applying the first-day-of-issue postmark, the Postal Service will return the envelopes to the customer by U.S. Mail®.

#### Traditional Postmarks

Customers must affix the stamps to the envelopes and address them to themselves or others for return through the mail. Or, they may include an additional self-addressed return envelope, large enough to accommodate their canceled items, with sufficient postage affixed for return of their postmarked items. Address customer requests for traditional postmarks to:

FDOI – (Name of Stamp Issue)  
USPS Stamp Fulfillment Services  
8300 NE Underground Drive, Suite 300  
Kansas City, MO 64144-9900

After applying the first-day-of-issue postmark, the Postal Service will return the envelopes to the customer by U.S. Mail™. There is no charge for the first 50 postmarks. There is a 5-cent charge for each additional postmark over 50. Customers must submit a check, money order, or credit card for payment.

Locally produced items are not authorized. Only merchandise that has been approved and assigned an item number by Headquarters Retail Marketing may be produced and sold.

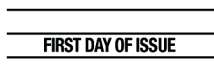


Digital Color Pictorial

#### FDOI – Espresso Drinks Stamps

USPS Stamp Fulfillment Services  
8300 NE Underground Drive, Suite 300  
Kansas City, MO 64144-9900

August 9, 2021



Black and White Pictorial

#### FDOI – Espresso Drinks Stamps

USPS Stamp Fulfillment Services  
8300 NE Underground Drive, Suite 300  
Kansas City, MO 64144-9900

August 9, 2021



Digital Color Pictorial

**FDOI – Star Wars Droids Stamps**

USPS Stamp Fulfillment Services  
8300 NE Underground Drive, Suite 300  
Kansas City, MO 64144-9900

September 4, 2021



Digital Color Pictorial

**FDOI – Star Wars Droids Stamps**

USPS Stamp Fulfillment Services  
8300 NE Underground Drive, Suite 300  
Kansas City, MO 64144-9900

September 4, 2021



Digital Color Pictorial

**FDOI – Star Wars Droids Stamps**

USPS Stamp Fulfillment Services  
8300 NE Underground Drive, Suite 300  
Kansas City, MO 64144-9900

September 4, 2021



Digital Color Pictorial

**FDOI – Star Wars Droids Stamps**

USPS Stamp Fulfillment Services  
8300 NE Underground Drive, Suite 300  
Kansas City, MO 64144-9900

September 4, 2021



Digital Color Pictorial

**FDOI – Star Wars Droids Stamps**

USPS Stamp Fulfillment Services  
8300 NE Underground Drive, Suite 300  
Kansas City, MO 64144-9900

September 4, 2021



Digital Color Pictorial

**FDOI – Star Wars Droids Stamps**

USPS Stamp Fulfillment Services  
8300 NE Underground Drive, Suite 300  
Kansas City, MO 64144-9900

September 4, 2021



Digital Color Pictorial

**FDOI – Star Wars Droids Stamps**

USPS Stamp Fulfillment Services  
8300 NE Underground Drive, Suite 300  
Kansas City, MO 64144-9900

September 4, 2021



Digital Color Pictorial

**FDI – Star Wars Droids Stamps**

USPS Stamp Fulfillment Services  
8300 NE Underground Drive, Suite 300  
Kansas City, MO 64144-9900

September 4, 2021



Digital Color Pictorial

**FDI – Star Wars Droids Stamps**

USPS Stamp Fulfillment Services  
8300 NE Underground Drive, Suite 300  
Kansas City, MO 64144-9900

September 4, 2021



Digital Color Pictorial

**FDI – Star Wars Droids Stamps**

USPS Stamp Fulfillment Services  
8300 NE Underground Drive, Suite 300  
Kansas City, MO 64144-9900

September 4, 2021



Black and White Pictorial

**FDI – Star Wars Droids Stamps**

USPS Stamp Fulfillment Services  
8300 NE Underground Drive, Suite 300  
Kansas City, MO 64144-9900

September 4, 2021



Digital Color Pictorial

**FDI – Heritage Breeds Stamps**

USPS Stamp Fulfillment Services  
8300 NE Underground Drive, Suite 300  
Kansas City, MO 64144-9900

September 17, 2021



Black and White Pictorial

**FDI – Heritage Breeds Stamps**

USPS Stamp Fulfillment Services  
8300 NE Underground Drive, Suite 300  
Kansas City, MO 64144-9900

September 17, 2021



Digital Color Pictorial

**FDI – Go for Broke: Japanese American Soldiers of WWII**

USPS Stamp Fulfillment Services  
8300 NE Underground Drive, Suite 300  
Kansas City, MO 64144-9900

October 3, 2021



**FDOI – Go for Broke: Japanese American Soldiers of WWII**  
USPS Stamp Fulfillment Services  
8300 NE Underground Drive, Suite 300  
Kansas City, MO 64144-9900

October 3, 2021

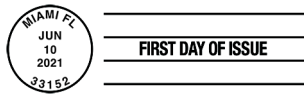
**Black and White Pictorial**



**FDOI – Emilio Sanchez Stamps**  
USPS Stamp Fulfillment Services  
8300 NE Underground Drive, Suite 300  
Kansas City, MO 64144-9900

October 10, 2021

**Digital Color Pictorial**



**FDOI – Emilio Sanchez Stamps**  
USPS Stamp Fulfillment Services  
8300 NE Underground Drive, Suite 300  
Kansas City, MO 64144-9900

October 10, 2021

**Black and White Pictorial**



**FDOI – Sun Science Stamps**  
USPS Stamp Fulfillment Services  
8300 NE Underground Drive, Suite 300  
Kansas City, MO 64144-9900

October 18, 2021

**Digital Color Pictorial**



**FDOI – Sun Science Stamps**  
USPS Stamp Fulfillment Services  
8300 NE Underground Drive, Suite 300  
Kansas City, MO 64144-9900

October 18, 2021

**Black and White Pictorial**



**FDOI – Tap Dance Stamps**  
USPS Stamp Fulfillment Services  
8300 NE Underground Drive, Suite 300  
Kansas City, MO 64144-9900

November 10, 2021

**Digital Color Pictorial**



**FDOI – Tap Dance Stamps**  
USPS Stamp Fulfillment Services  
8300 NE Underground Drive, Suite 300  
Kansas City, MO 64144-9900

November 10, 2021

**Black and White Pictorial**





**FDOI – Yogi Berra Stamp**

USPS Stamp Fulfillment Services  
8300 NE Underground Drive, Suite 300  
Kansas City, MO 64144-9900

October 24, 2021

Digital Color Pictorial



**FDOI – Yogi Berra Stamp**

USPS Stamp Fulfillment Services  
8300 NE Underground Drive, Suite 300  
Kansas City, MO 64144-9900

October 24, 2021

Black and White Pictorial



**FDOI – Mystery Message Stamp**

USPS Stamp Fulfillment Services  
8300 NE Underground Drive, Suite 300  
Kansas City, MO 64144-9900

November 14, 2021

Digital Color Pictorial



**FDOI – Mystery Message Stamp**

USPS Stamp Fulfillment Services  
8300 NE Underground Drive, Suite 300  
Kansas City, MO 64144-9900

November 14, 2021

Black and White Pictorial

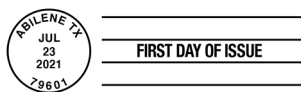


**FDOI – Western Wear Stamps**

USPS Stamp Fulfillment Services  
8300 NE Underground Drive, Suite 300  
Kansas City, MO 64144-9900

November 23, 2021

Digital Color Pictorial



**FDOI – Western Wear Stamps**

USPS Stamp Fulfillment Services  
8300 NE Underground Drive, Suite 300  
Kansas City, MO 64144-9900

November 23, 2021

Black and White Pictorial

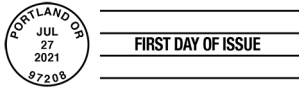


**FDOI – Ursula K. Le Guin Stamp**

USPS Stamp Fulfillment Services  
8300 NE Underground Drive, Suite 300  
Kansas City, MO 64144-9900

November 27, 2021

Digital Color Pictorial

**FDOI – Ursula K. Le Guin Stamp**

USPS Stamp Fulfillment Services  
8300 NE Underground Drive, Suite 300  
Kansas City, MO 64144-9900

November 27, 2021

**Black and White Pictorial****FDOI – Raven Story Stamp**

USPS Stamp Fulfillment Services  
8300 NE Underground Drive, Suite 300  
Kansas City, MO 64144-9900

November 30, 2021

**Digital Color Pictorial****FDOI – Raven Story Stamp**

USPS Stamp Fulfillment Services  
8300 NE Underground Drive, Suite 300  
Kansas City, MO 64144-9900

November 30, 2021

**Black and White Pictorial****FDOI – Mid-Atlantic Lighthouses Stamps**

USPS Stamp Fulfillment Services  
8300 NE Underground Drive, Suite 300  
Kansas City, MO 64144-9900

December 6, 2021

**Digital Color Pictorial****FDOI – Mid-Atlantic Lighthouses Stamps**

USPS Stamp Fulfillment Services  
8300 NE Underground Drive, Suite 300  
Kansas City, MO 64144-9900

December 6, 2021

**Black and White Pictorial****FDOI – Missouri Statehood Stamp**

USPS Stamp Fulfillment Services  
8300 NE Underground Drive, Suite 300  
Kansas City, MO 64144-9900

December 10, 2021

**Digital Color Pictorial****FDOI – Missouri Statehood Stamp**

USPS Stamp Fulfillment Services  
8300 NE Underground Drive, Suite 300  
Kansas City, MO 64144-9900

December 10, 2021

**Black and White Pictorial**

**FDOI – Backyard Games Stamps**

USPS Stamp Fulfillment Services  
8300 NE Underground Drive, Suite 300  
Kansas City, MO 64144-9900

December 12, 2021

**Digital Color Pictorial****FDOI – Backyard Games Stamps**

USPS Stamp Fulfillment Services  
8300 NE Underground Drive, Suite 300  
Kansas City, MO 64144-9900

December 12, 2021

**Black and White Pictorial**

— *Stamp Services, Marketing, 7-1-21*

## Supply Management

### Interest Rate on Contract Claims

The Postal Service™ periodically publishes the interest rate payable on a claim decided in a supplier's favor under the Contract Disputes Act of 1978 in the *Postal Bulletin*. This rate also applies for late payments to suppliers under the Prompt Payment Act, as amended.

The interest rate effective for the 6-month period of July 1 to December 31, 2021, is 1.125 percent.

— *Supply Management Infrastructure,  
Supply Management, 7-1-21*

475 L'ENFANT PLAZA SW  
WASHINGTON DC 20260-5540

First-Class Mail  
Postage & Fees Paid  
USPS  
Permit No. G-10

# USPS® Features *Heritage Breeds* Forever® Stamps



**Mulefoot Hog**  
USA / FOREVER



**Wyandotte Chicken**  
USA / FOREVER



**Milking Devon Cow**  
USA / FOREVER



**American Cream Draft Horse**  
USA / FOREVER



**Cotton Patch Goose**  
USA / FOREVER



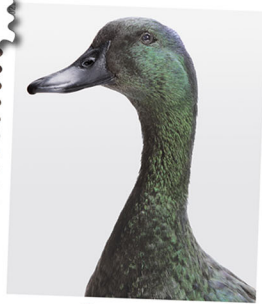
**San Clemente Island Goat**  
USA / FOREVER



**Narragansett Turkey**  
USA / FOREVER



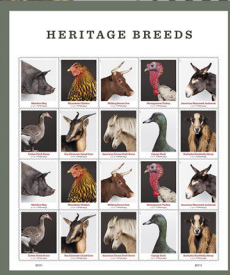
**American Mammoth Jackstock**  
USA / FOREVER



**Cayuga Duck**  
USA / FOREVER



**Barbados Blackbelly Sheep**  
USA / FOREVER



On Sale  
Nationwide:  
May 17, 2021  
Sold as a full pane.